

Data Path : Z:\pestpcbsrv\HPCHEM1\ECD_L\Data\PL112119\
 Data File : PL054511.D
 Signal(s) : Signal #1: ECD1A.ch Signal #2: ECD2B.ch
 Acq On : 21 Nov 2019 11:37
 Operator : SG\AJ
 Sample : PSTDCCC050
 Misc :
 ALS Vial : 4 Sample Multiplier: 1

Instrument :
 ECD_L
Client Sampled :
 PSTDCCC050

Manual Integrations
APPROVED
 Ankita
 11/22/2019 1:13:29 PM

Integration File signal 1: autoint1.e
 Integration File signal 2: autoint2.e
 Quant Time: Nov 22 00:32:42 2019
 Quant Method : Z:\pestpcbsrv\HPCHEM1\ECD_L\methods\PL111819.M
 Quant Title : GC Extractables
 QLast Update : Tue Nov 19 01:04:14 2019
 Response via : Initial Calibration
 Integrator: ChemStation

Volume Inj. : 1 µl
 Signal #1 Phase : ZB-MR2 Signal #2 Phase: ZB-MR1
 Signal #1 Info : 30M x 0.32mm x0.2 Signal #2 Info : 30M x 0.32mm x0.5µm

	Compound	RT#1	RT#2	Resp#1	Resp#2	ng/ml	ng/ml

System Monitoring Compounds							
1)	SA Tetrachlo...	3.538	4.042	496.6E6	113.2E6	47.760	46.470
2)	SA Decachlor...	8.320	9.121	414.3E6	116.9E6	46.806	48.362
Target Compounds							
2)	A alpha-BHC	3.982	4.433	815.1E6	161.5E6	47.848	47.953
3)	MA gamma-BHC...	4.268	4.719	736.9E6	147.7E6	49.048	48.037
4)	MA Heptachlor	4.575	5.228	727.0E6	133.9E6	47.479	46.579
5)	MB Aldrin	4.826	5.534	680.3E6	125.7E6	48.546	47.621
6)	B beta-BHC	4.519	4.889	307.1E6	68259474	47.766	45.558
7)	B delta-BHC	4.727	5.107	716.6E6	136.4E6	51.166	54.159
8)	B Heptachlo...	5.269	5.920	621.9E6	132.9E6	48.152m	55.931
9)	A Endosulfan I	5.611	6.277	556.9E6	118.2E6	47.013m	50.401
10)	B gamma-Chl...	5.498	6.154	621.5E6	143.8E6	48.408m	57.799
11)	B alpha-Chl...	5.556	6.227	577.9E6	126.9E6	46.050m	50.969
12)	B 4,4'-DDE	5.721	6.383	543.8E6	116.8E6	47.015	48.902
13)	MA Dieldrin	5.857	6.534	584.6E6	116.4E6	47.800	48.065
14)	MA Endrin	6.116	6.752	512.7E6	96703226	46.418	45.622
15)	B Endosulfa...	6.389	6.961	486.2E6	104.8E6	46.418	48.195
16)	A 4,4'-DDD	6.238	6.873	428.5E6	91558614	51.949	51.739
17)	MA 4,4'-DDT	6.481	7.172	401.1E6	87239559	44.238	44.474
18)	B Endrin al...	6.557	7.085	395.0E6	89022584	46.120	47.062
19)	B Endosulfa...	6.770	7.308	435.9E6	99315330	46.549	48.084
20)	A Methoxychlor	7.025	7.630	197.4E6	47712641	43.131	42.759
21)	B Endrin ke...	7.264	7.779	475.2E6	108.5E6	47.306	47.917
22)	Mirex	7.457	8.234	352.3E6	84242666	46.260	49.732

(f)=RT Delta > 1/2 Window (#)=Amounts differ by > 25% (m)=manual int.

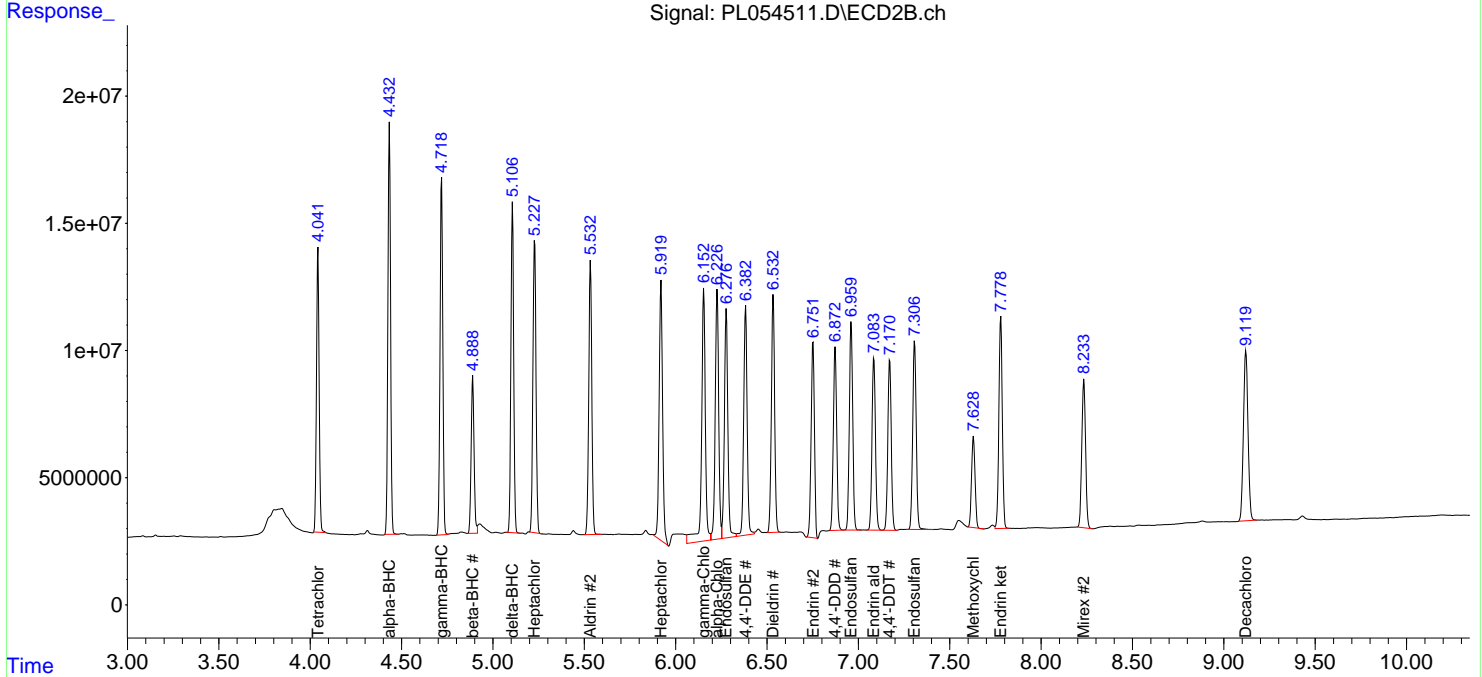
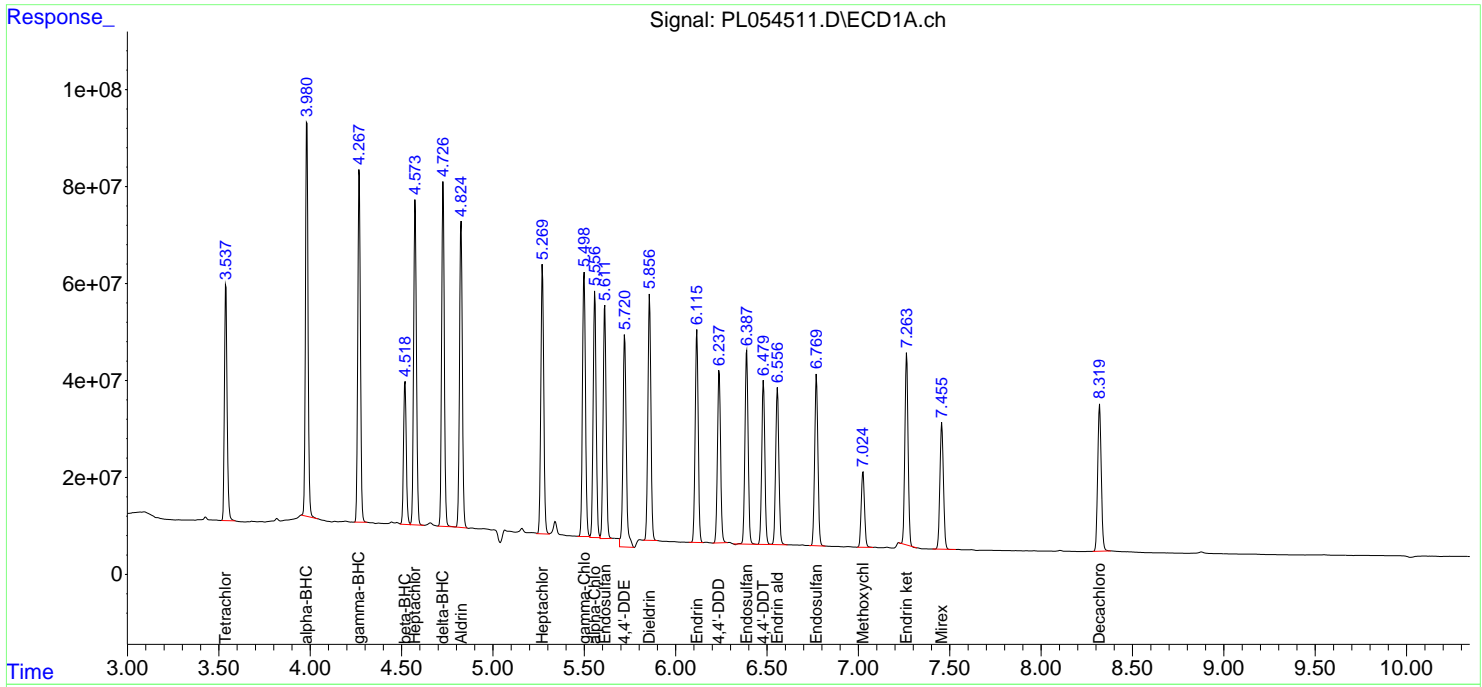
Data Path : Z:\pestpcbsrv\HPCHEM1\ECD_L\Data\PL112119\
 Data File : PL054511.D
 Signal(s) : Signal #1: ECD1A.ch Signal #2: ECD2B.ch
 Acq On : 21 Nov 2019 11:37
 Operator : SG\AJ
 Sample : PSTDCCC050
 Misc :
 ALS Vial : 4 Sample Multiplier: 1

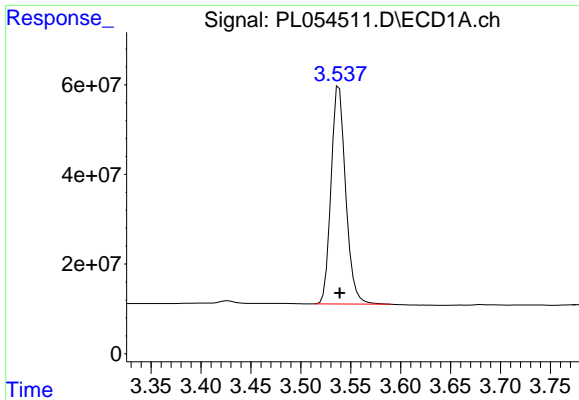
Instrument :
 ECD_L
 Client Sampled :
 PSTDCCC050

Manual Integrations
APPROVED
 Ankita
 11/22/2019 1:13:29 PM

Integration File signal 1: autoint1.e
 Integration File signal 2: autoint2.e
 Quant Time: Nov 22 00:32:42 2019
 Quant Method : Z:\pestpcbsrv\HPCHEM1\ECD_L\methods\PL111819.M
 Quant Title : GC Extractables
 QLast Update : Tue Nov 19 01:04:14 2019
 Response via : Initial Calibration
 Integrator: ChemStation

Volume Inj. : 1 µl
 Signal #1 Phase : ZB-MR2 Signal #2 Phase: ZB-MR1
 Signal #1 Info : 30M x 0.32mm x0.2 Signal #2 Info : 30M x 0.32mm x0.5µm

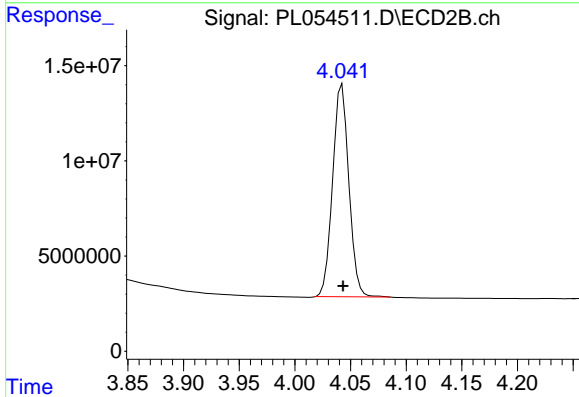




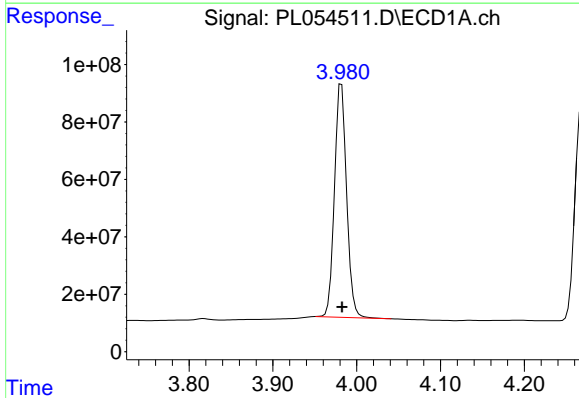
#1 Tetrachloro-m-xylene
 R.T.: 3.538 min
 Delta R.T.: 0.000 min
 Response: 496579555
 Conc: 47.76 ng/ml

Instrument :
 ECD_L
 ClientSampled :
 PSTDCCC050

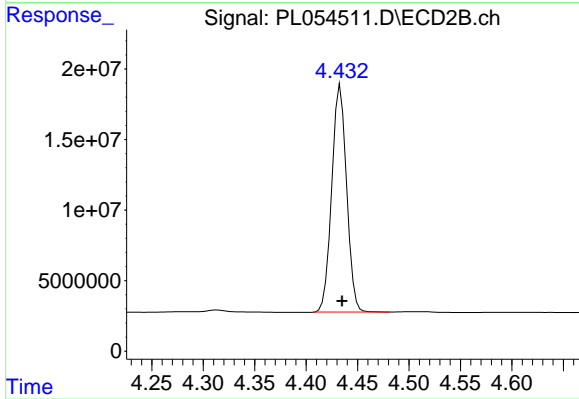
Manual Integrations
 APPROVED
 Ankita
 11/22/2019 1:13:29 PM



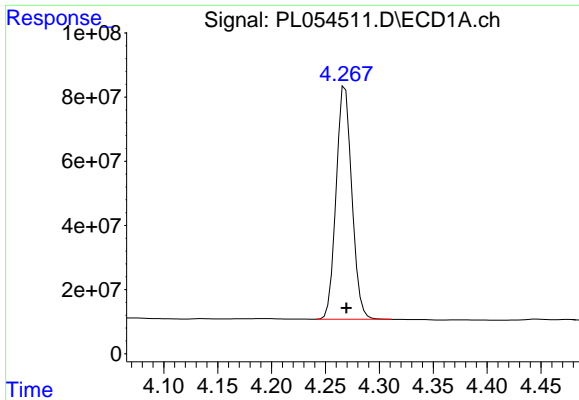
#1 Tetrachloro-m-xylene
 R.T.: 4.042 min
 Delta R.T.: 0.000 min
 Response: 113213073
 Conc: 46.47 ng/ml



#2 alpha-BHC
 R.T.: 3.982 min
 Delta R.T.: 0.000 min
 Response: 815127946
 Conc: 47.85 ng/ml



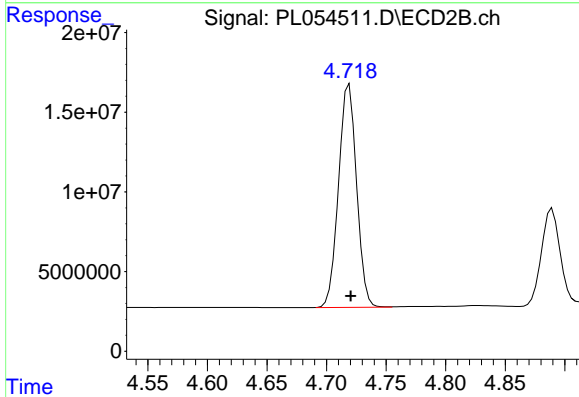
#2 alpha-BHC
 R.T.: 4.433 min
 Delta R.T.: -0.002 min
 Response: 161460674
 Conc: 47.95 ng/ml



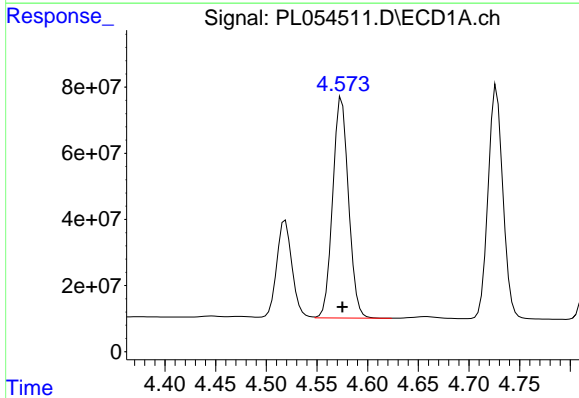
#3 gamma-BHC (Lindane)
 R.T.: 4.268 min
 Delta R.T.: -0.001 min
 Response: 736929326
 Conc: 49.05 ng/ml

Instrument :
 ECD_L
 ClientSampled :
 PSTDCCC050

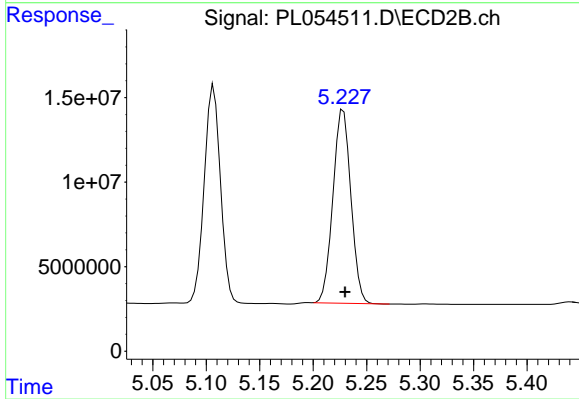
Manual Integrations
 APPROVED
 Ankita
 11/22/2019 1:13:29 PM



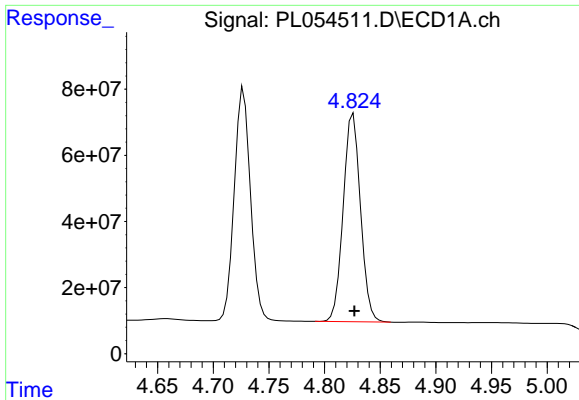
#3 gamma-BHC (Lindane)
 R.T.: 4.719 min
 Delta R.T.: -0.001 min
 Response: 147705028
 Conc: 48.04 ng/ml



#4 Heptachlor
 R.T.: 4.575 min
 Delta R.T.: 0.000 min
 Response: 727043680
 Conc: 47.48 ng/ml



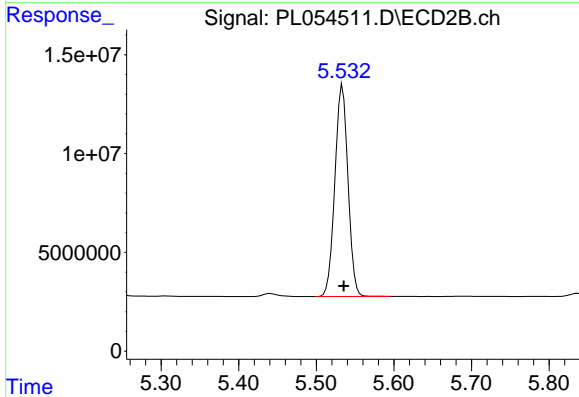
#4 Heptachlor
 R.T.: 5.228 min
 Delta R.T.: -0.002 min
 Response: 133854841
 Conc: 46.58 ng/ml



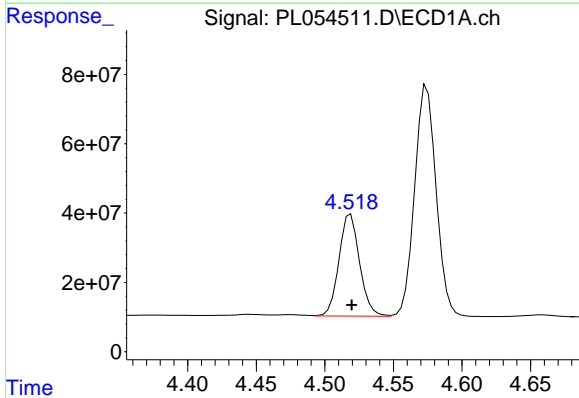
#5 Aldrin
 R.T.: 4.826 min
 Delta R.T.: 0.000 min
 Response: 680256968
 Conc: 48.55 ng/ml

Instrument :
 ECD_L
ClientSampled :
 PSTDCCC050

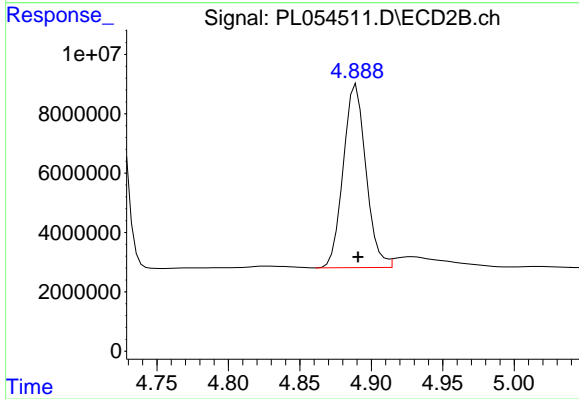
Manual Integrations
APPROVED
 Ankita
 11/22/2019 1:13:29 PM



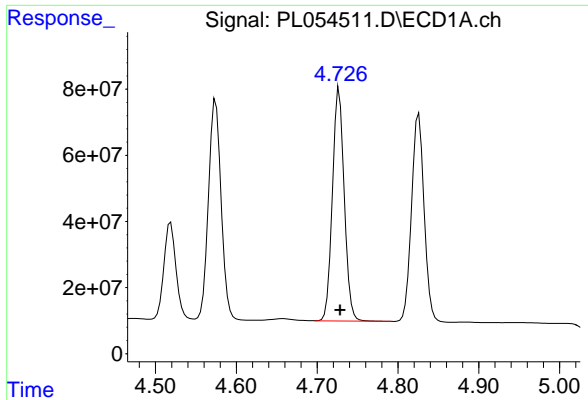
#5 Aldrin
 R.T.: 5.534 min
 Delta R.T.: -0.002 min
 Response: 125695887
 Conc: 47.62 ng/ml



#6 beta-BHC
 R.T.: 4.519 min
 Delta R.T.: 0.000 min
 Response: 307087069
 Conc: 47.77 ng/ml



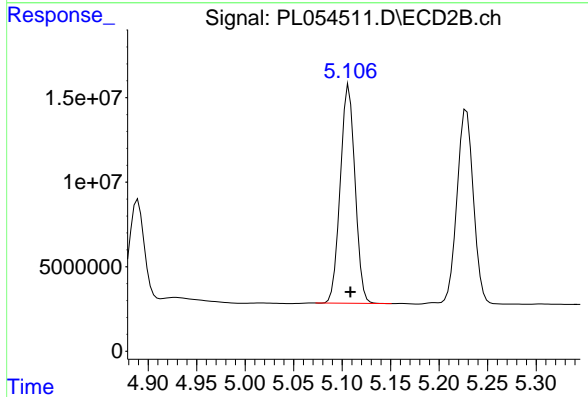
#6 beta-BHC
 R.T.: 4.889 min
 Delta R.T.: -0.001 min
 Response: 68259474
 Conc: 45.56 ng/ml



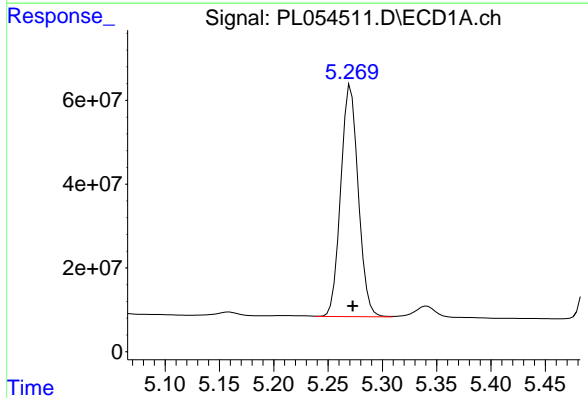
#7 delta-BHC
 R.T.: 4.727 min
 Delta R.T.: 0.000 min
 Response: 716609278
 Conc: 51.17 ng/ml

Instrument :
 ECD_L
ClientSampled :
 PSTDCCC050

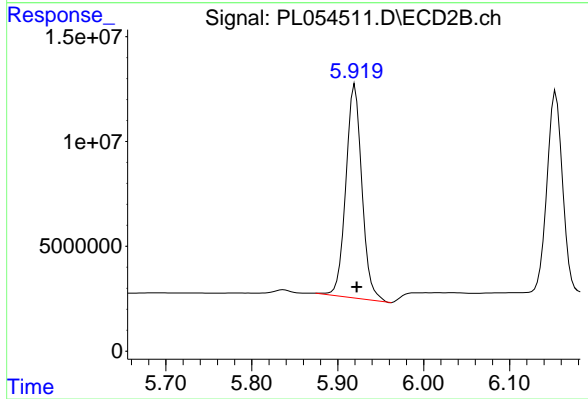
Manual Integrations
APPROVED
 Ankita
 11/22/2019 1:13:29 PM



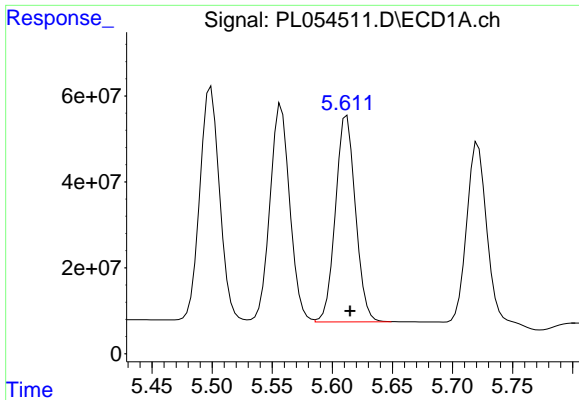
#7 delta-BHC
 R.T.: 5.107 min
 Delta R.T.: -0.002 min
 Response: 136427206
 Conc: 54.16 ng/ml



#8 Heptachlor epoxide
 R.T.: 5.269 min
 Delta R.T.: -0.003 min
 Response: 621916381
 Conc: 48.15 ng/ml m



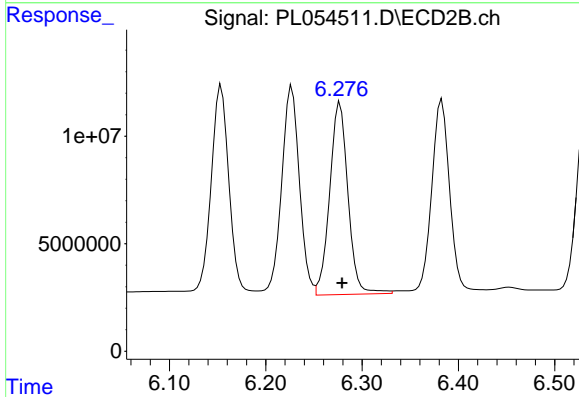
#8 Heptachlor epoxide
 R.T.: 5.920 min
 Delta R.T.: -0.002 min
 Response: 132929173
 Conc: 55.93 ng/ml



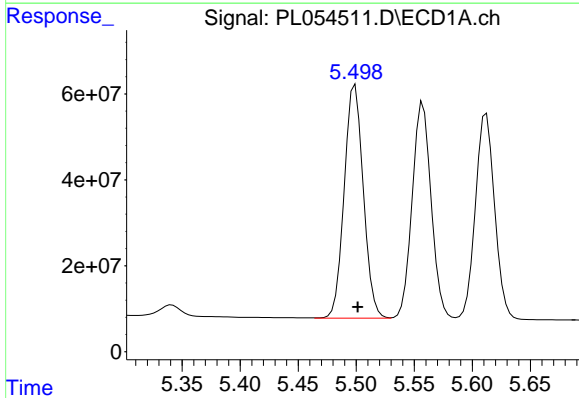
#9 Endosulfan I
 R.T.: 5.611 min
 Delta R.T.: -0.004 min
 Response: 556914659
 Conc: 47.01 ng/ml m

Instrument :
 ECD_L
 ClientSampled :
 PSTDCCC050

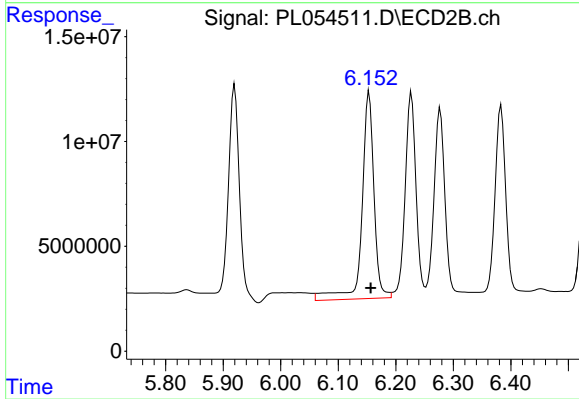
Manual Integrations
 APPROVED
 Ankita
 11/22/2019 1:13:29 PM



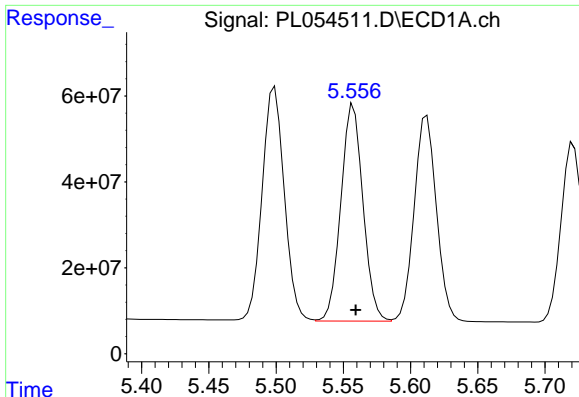
#9 Endosulfan I
 R.T.: 6.277 min
 Delta R.T.: -0.002 min
 Response: 118159908
 Conc: 50.40 ng/ml



#10 gamma-Chlordane
 R.T.: 5.498 min
 Delta R.T.: -0.004 min
 Response: 621543947
 Conc: 48.41 ng/ml m



#10 gamma-Chlordane
 R.T.: 6.154 min
 Delta R.T.: -0.003 min
 Response: 143831026
 Conc: 57.80 ng/ml



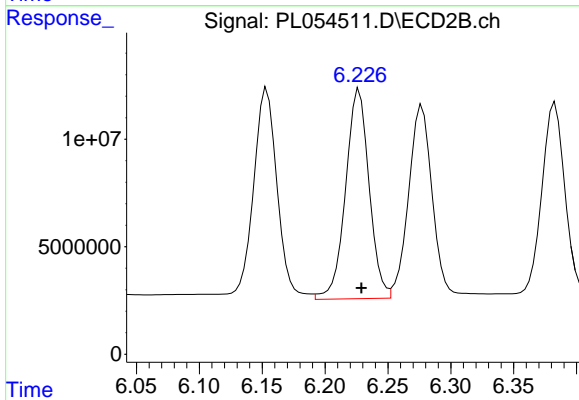
#11 alpha-Chlordane

R.T.: 5.556 min
Delta R.T.: -0.003 min
Response: 577905002
Conc: 46.05 ng/ml m

Instrument :
ECD_L
ClientSampled :
PSTDCCC050

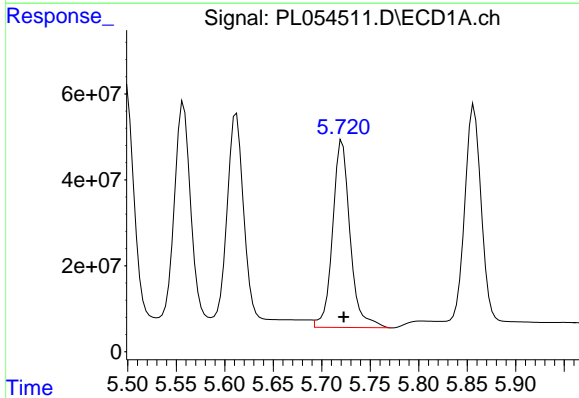
Manual Integrations
APPROVED

Ankita
11/22/2019 1:13:29 PM



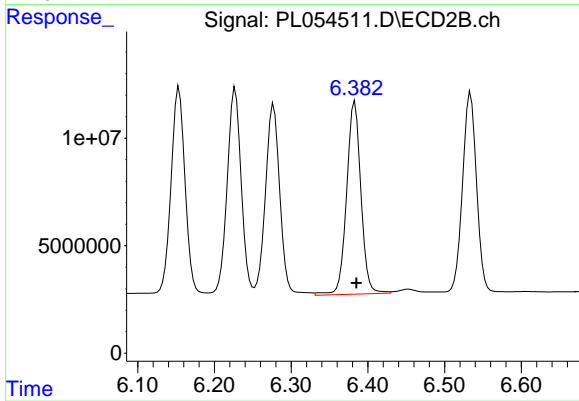
#11 alpha-Chlordane

R.T.: 6.227 min
Delta R.T.: -0.002 min
Response: 126866580
Conc: 50.97 ng/ml



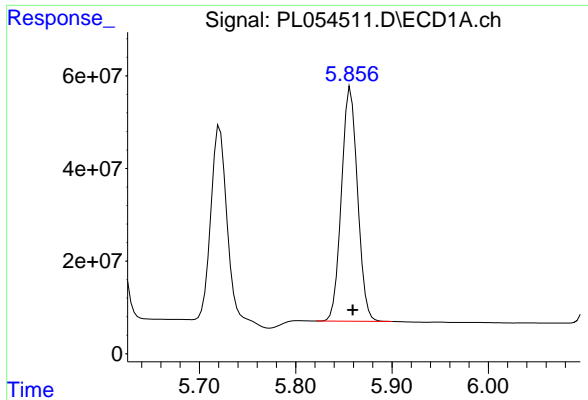
#12 4,4'-DDE

R.T.: 5.721 min
Delta R.T.: -0.001 min
Response: 543805691
Conc: 47.02 ng/ml



#12 4,4'-DDE

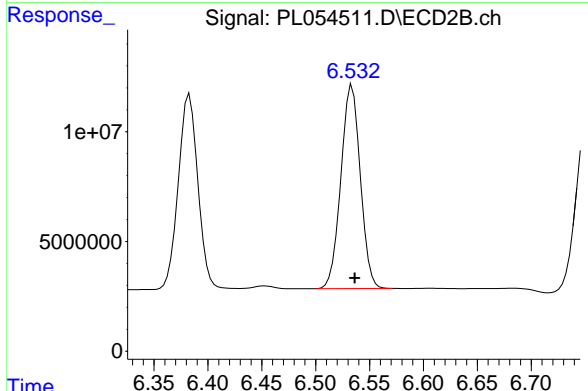
R.T.: 6.383 min
Delta R.T.: -0.002 min
Response: 116816552
Conc: 48.90 ng/ml



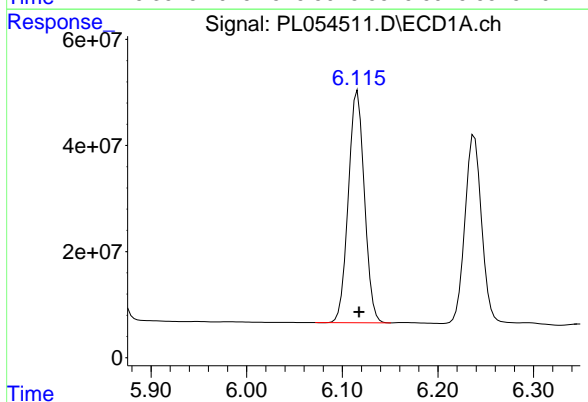
#13 Dieldrin
 R.T.: 5.857 min
 Delta R.T.: -0.002 min
 Response: 584550586
 Conc: 47.80 ng/ml

Instrument :
 ECD_L
 ClientSampled :
 PSTDCCC050

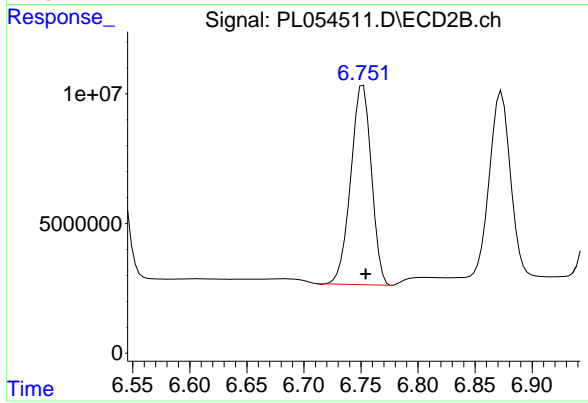
Manual Integrations
 APPROVED
 Ankita
 11/22/2019 1:13:29 PM



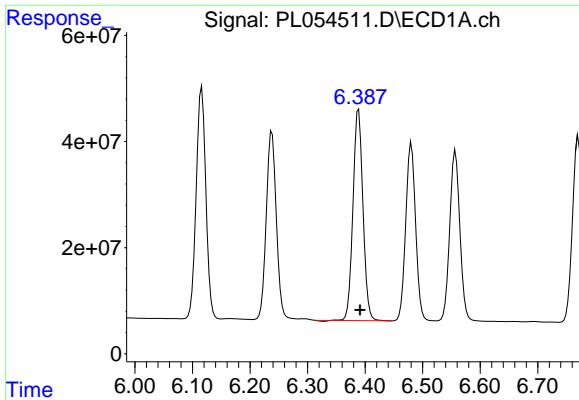
#13 Dieldrin
 R.T.: 6.534 min
 Delta R.T.: -0.003 min
 Response: 116403114
 Conc: 48.07 ng/ml



#14 Endrin
 R.T.: 6.116 min
 Delta R.T.: -0.001 min
 Response: 512742825
 Conc: 46.42 ng/ml



#14 Endrin
 R.T.: 6.752 min
 Delta R.T.: -0.002 min
 Response: 96703226
 Conc: 45.62 ng/ml

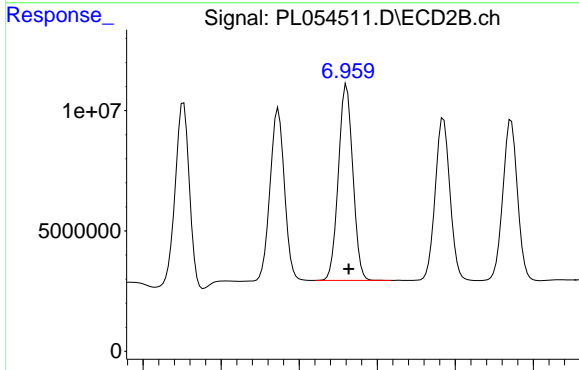


#15 Endosulfan II

R.T.: 6.389 min
 Delta R.T.: -0.003 min
 Response: 486187865
 Conc: 46.42 ng/ml

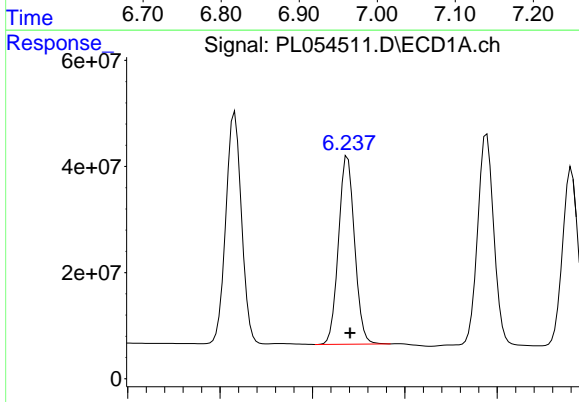
Instrument :
 ECD_L
 ClientSampled :
 PSTDCCC050

Manual Integrations
 APPROVED
 Ankita
 11/22/2019 1:13:29 PM



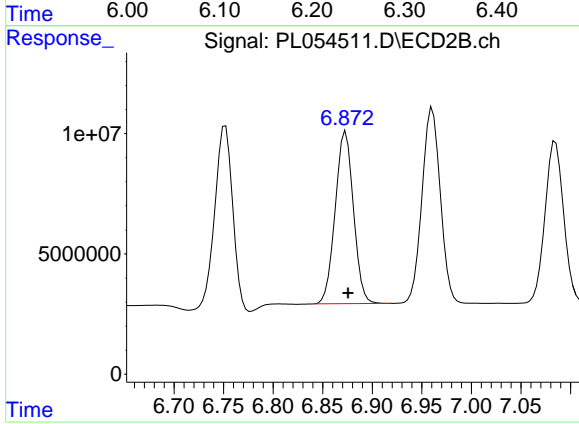
#15 Endosulfan II

R.T.: 6.961 min
 Delta R.T.: -0.003 min
 Response: 104769849
 Conc: 48.19 ng/ml



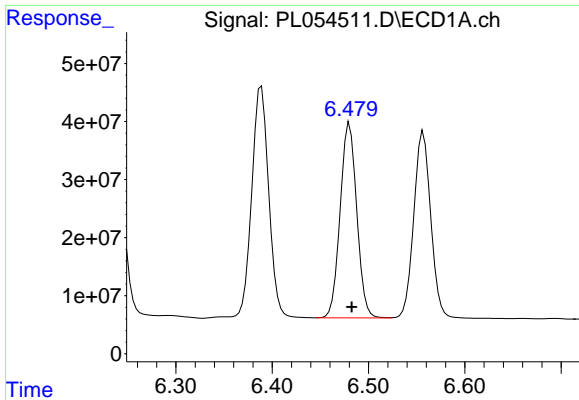
#16 4,4'-DDD

R.T.: 6.238 min
 Delta R.T.: -0.003 min
 Response: 428492914
 Conc: 51.95 ng/ml



#16 4,4'-DDD

R.T.: 6.873 min
 Delta R.T.: -0.002 min
 Response: 91558614
 Conc: 51.74 ng/ml



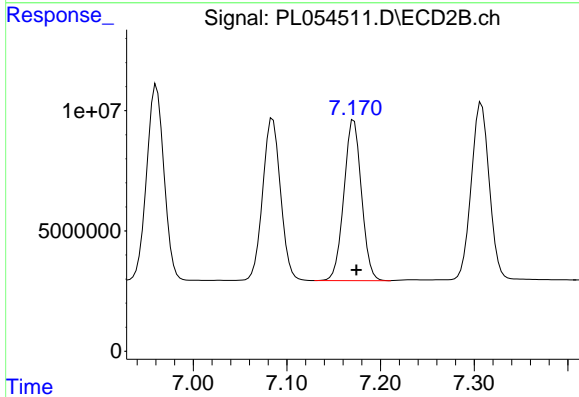
#17 4,4'-DDT

R.T.: 6.481 min
Delta R.T.: -0.002 min
Response: 401080438
Conc: 44.24 ng/ml

Instrument :
ECD_L
ClientSampled :
PSTDCCC050

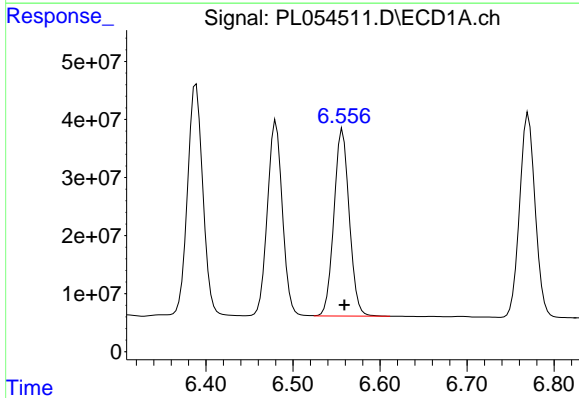
Manual Integrations
APPROVED

Ankita
11/22/2019 1:13:29 PM



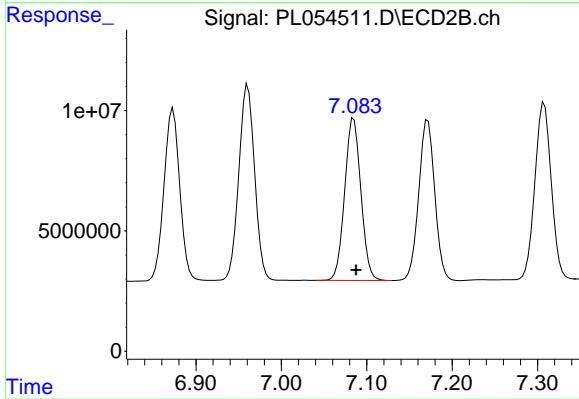
#17 4,4'-DDT

R.T.: 7.172 min
Delta R.T.: -0.003 min
Response: 87239559
Conc: 44.47 ng/ml



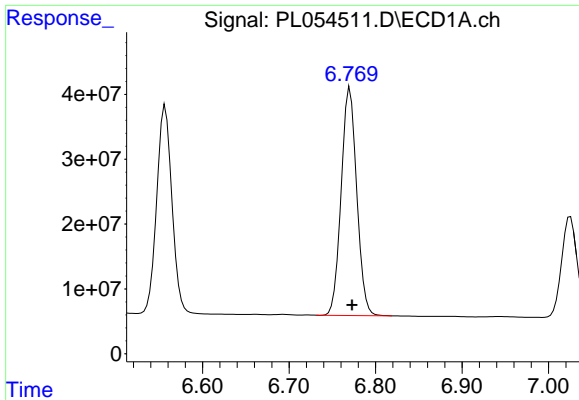
#18 Endrin aldehyde

R.T.: 6.557 min
Delta R.T.: -0.002 min
Response: 394981695
Conc: 46.12 ng/ml



#18 Endrin aldehyde

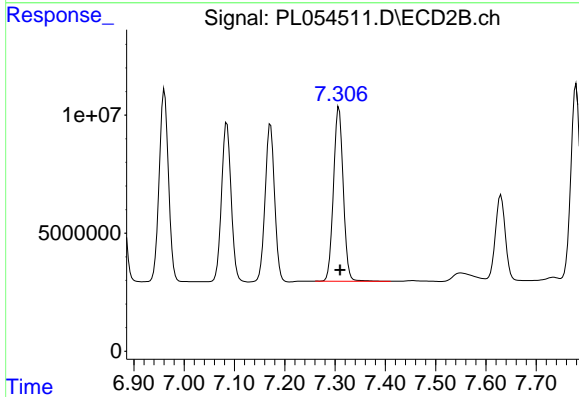
R.T.: 7.085 min
Delta R.T.: -0.002 min
Response: 89022584
Conc: 47.06 ng/ml



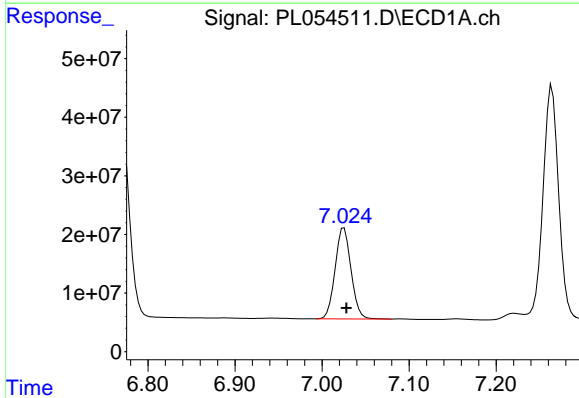
#19 Endosulfan Sulfate
 R.T.: 6.770 min
 Delta R.T.: -0.002 min
 Response: 435921386
 Conc: 46.55 ng/ml

Instrument :
 ECD_L
ClientSampled :
 PSTDCCC050

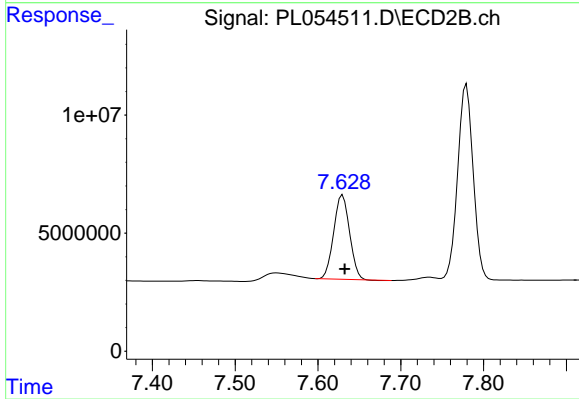
Manual Integrations
APPROVED
 Ankita
 11/22/2019 1:13:29 PM



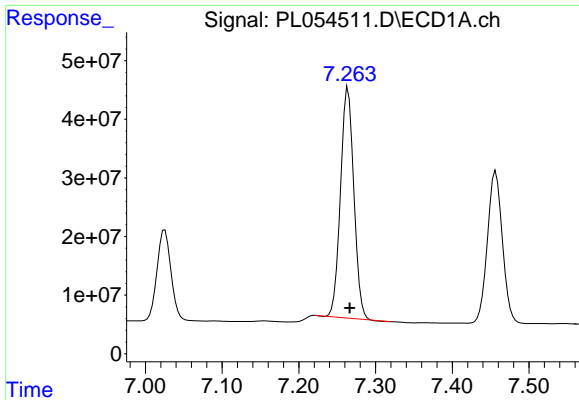
#19 Endosulfan Sulfate
 R.T.: 7.308 min
 Delta R.T.: -0.003 min
 Response: 99315330
 Conc: 48.08 ng/ml



#20 Methoxychlor
 R.T.: 7.025 min
 Delta R.T.: -0.003 min
 Response: 197401360
 Conc: 43.13 ng/ml



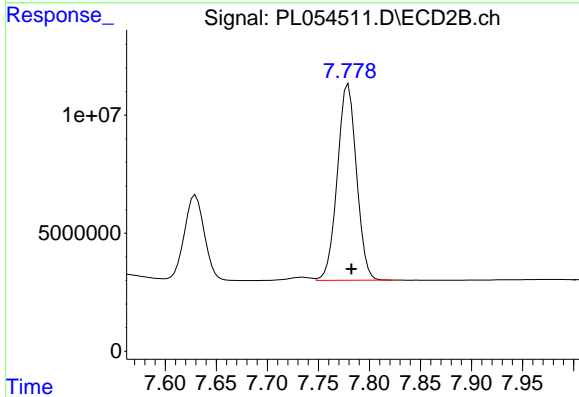
#20 Methoxychlor
 R.T.: 7.630 min
 Delta R.T.: -0.003 min
 Response: 47712641
 Conc: 42.76 ng/ml



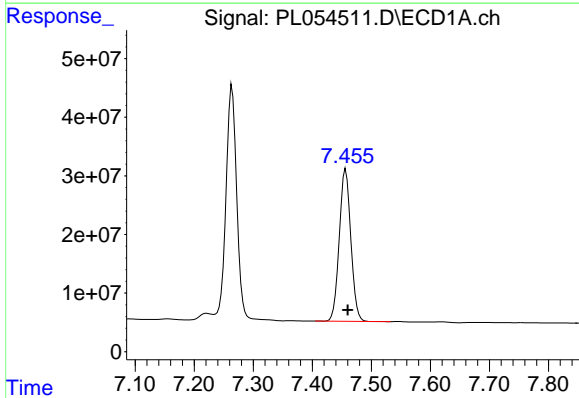
#21 Endrin ketone
 R.T.: 7.264 min
 Delta R.T.: -0.003 min
 Response: 475209375
 Conc: 47.31 ng/ml

Instrument :
 ECD_L
 ClientSampled :
 PSTDCCC050

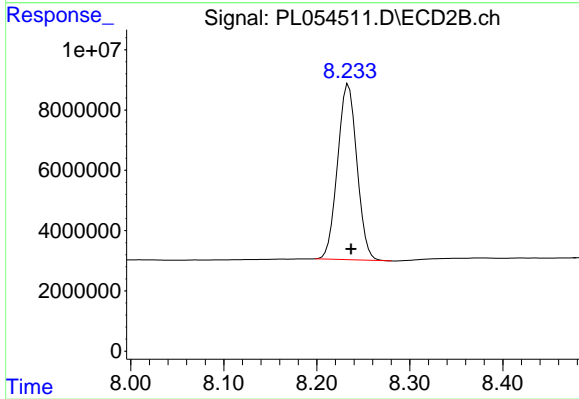
Manual Integrations
 APPROVED
 Ankita
 11/22/2019 1:13:29 PM



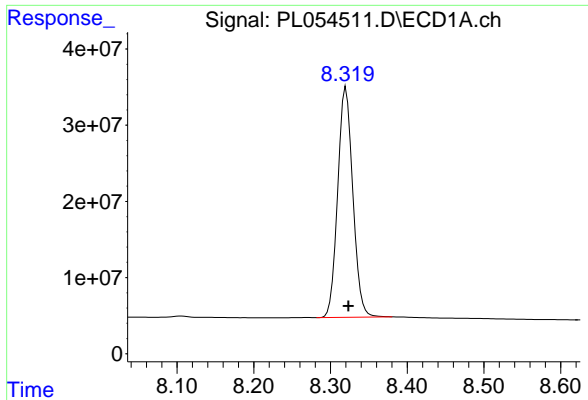
#21 Endrin ketone
 R.T.: 7.779 min
 Delta R.T.: -0.003 min
 Response: 108512013
 Conc: 47.92 ng/ml



#22 Mirex
 R.T.: 7.457 min
 Delta R.T.: -0.003 min
 Response: 352346186
 Conc: 46.26 ng/ml



#22 Mirex
 R.T.: 8.234 min
 Delta R.T.: -0.003 min
 Response: 84242666
 Conc: 49.73 ng/ml



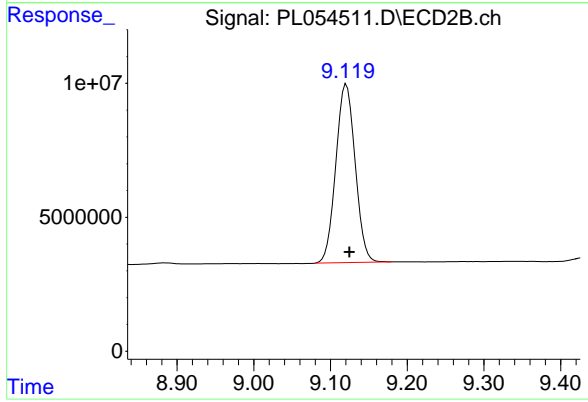
#28 Decachlorobiphenyl

R.T.: 8.320 min
Delta R.T.: -0.003 min
Response: 414278030
Conc: 46.81 ng/ml

Instrument :
ECD_L
ClientSampled :
PSTDCCC050

Manual Integrations
APPROVED

Ankita
11/22/2019 1:13:29 PM



#28 Decachlorobiphenyl

R.T.: 9.121 min
Delta R.T.: -0.004 min
Response: 116929331
Conc: 48.36 ng/ml