

Data Path : Z:\pestpcbsrv\HPCHEM1\ECD_L\Data\PL112119\
 Data File : PL054527.D
 Signal(s) : Signal #1: ECD1A.ch Signal #2: ECD2B.ch
 Acq On : 21 Nov 2019 16:51
 Operator : SG\AJ
 Sample : I.BLK
 Misc :
 ALS Vial : 2 Sample Multiplier: 1

Instrument :
 ECD_L
 ClientSampleId :
 I.BLK

Integration File signal 1: autoint1.e
 Integration File signal 2: autoint2.e
 Quant Time: Nov 22 00:37:37 2019
 Quant Method : Z:\pestpcbsrv\HPCHEM1\ECD_L\methods\PL111819.M
 Quant Title : GC Extractables
 QLast Update : Tue Nov 19 01:04:14 2019
 Response via : Initial Calibration
 Integrator: ChemStation

Volume Inj. : 1 µl
 Signal #1 Phase : ZB-MR2 Signal #2 Phase: ZB-MR1
 Signal #1 Info : 30M x 0.32mm x0.2 Signal #2 Info : 30M x 0.32mm x0.5µm

Compound	RT#1	RT#2	Resp#1	Resp#2	ng/ml	ng/ml

System Monitoring Compounds						
1) SA Tetrachlo...	3.538	4.043	172.3E6	40644834	16.567	16.683
28) SA Decachlor...	8.321	9.123	131.4E6	36799280	14.842	15.220

Target Compounds

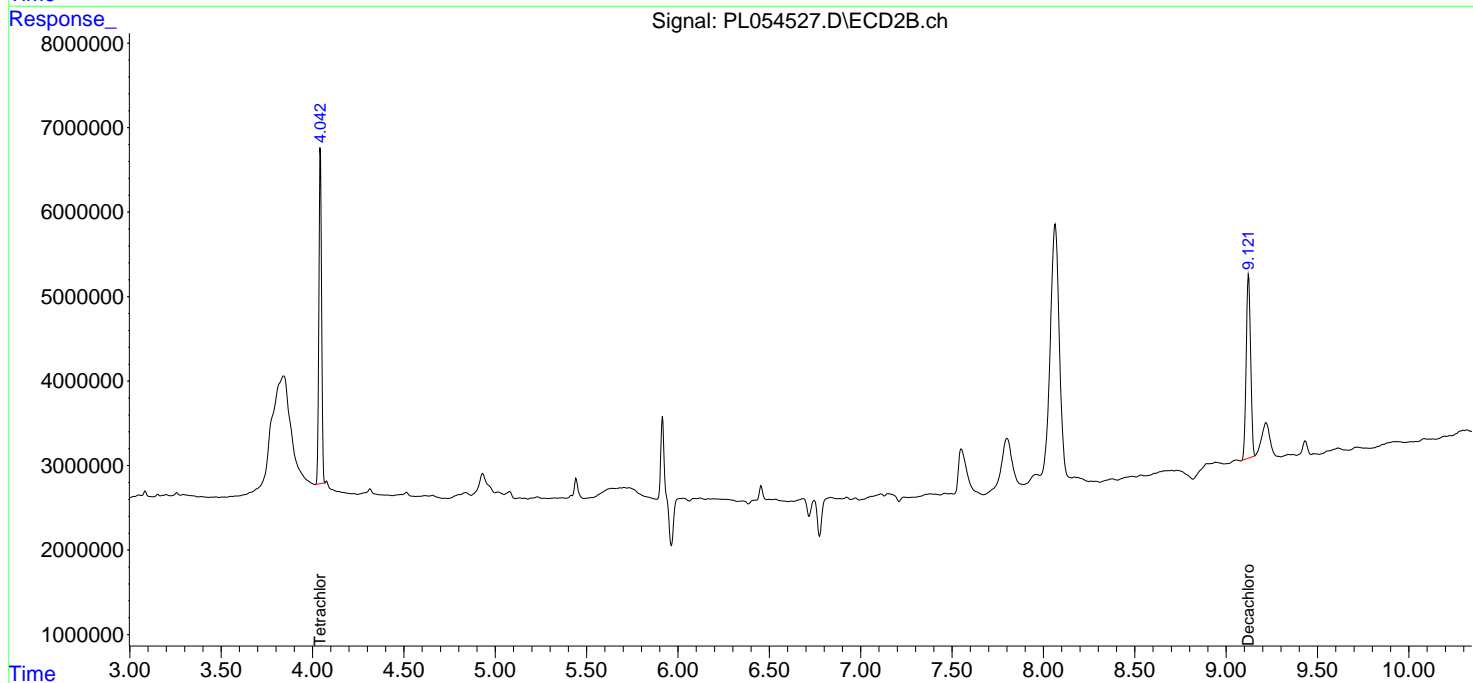
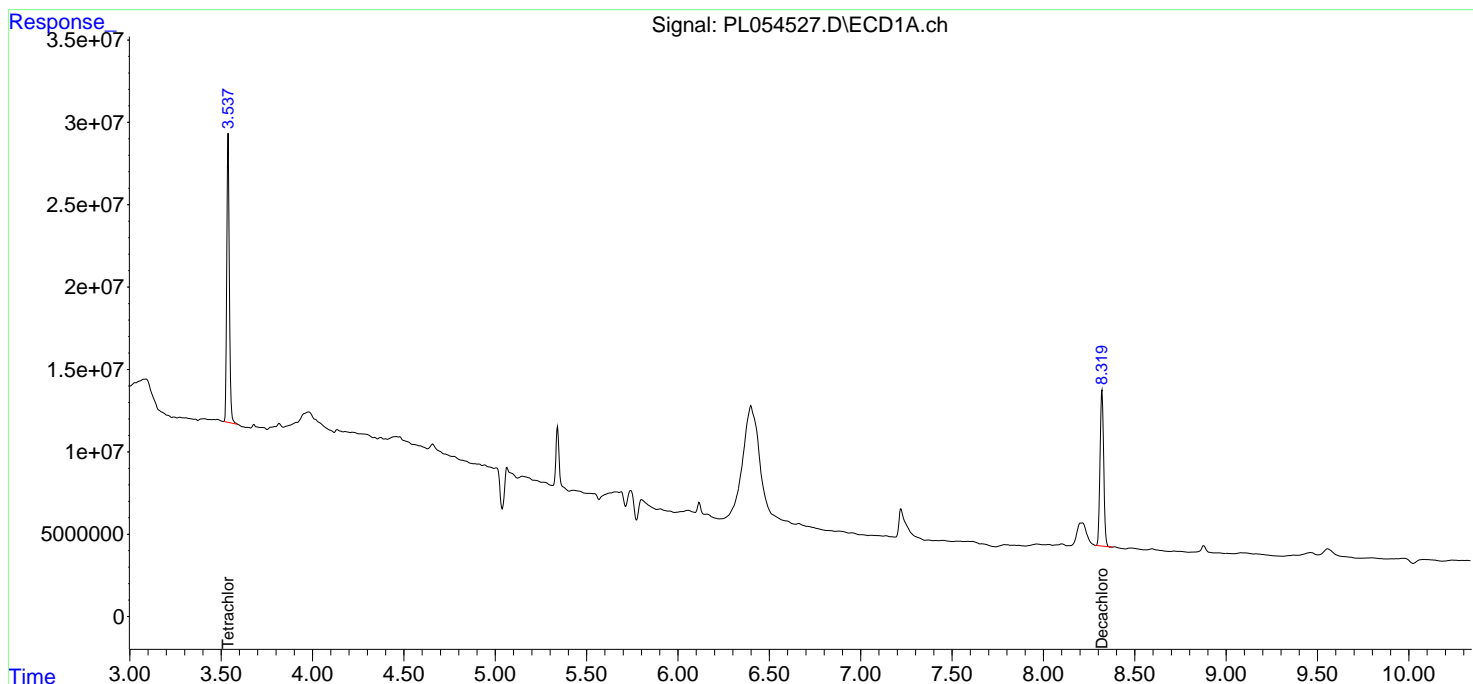
(f)=RT Delta > 1/2 Window (#)=Amounts differ by > 25% (m)=manual int.

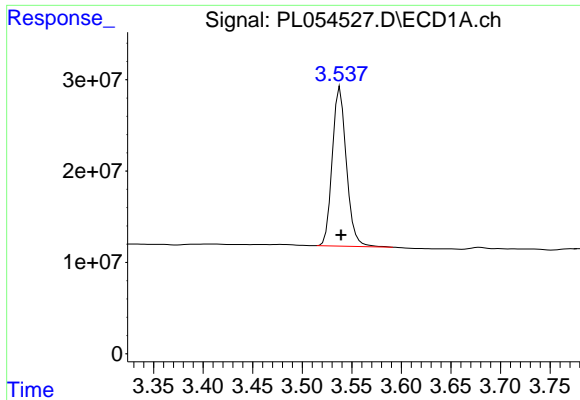
Data Path : Z:\pestpcbsrv\HPCHEM1\ECD_L\Data\PL112119\
 Data File : PL054527.D
 Signal(s) : Signal #1: ECD1A.ch Signal #2: ECD2B.ch
 Acq On : 21 Nov 2019 16:51
 Operator : SG\AJ
 Sample : I.BLK
 Misc :
 ALS Vial : 2 Sample Multiplier: 1

Instrument :
 ECD_L
 ClientSampleId :
 I.BLK

Integration File signal 1: autoint1.e
 Integration File signal 2: autoint2.e
 Quant Time: Nov 22 00:37:37 2019
 Quant Method : Z:\pestpcbsrv\HPCHEM1\ECD_L\methods\PL111819.M
 Quant Title : GC Extractables
 QLast Update : Tue Nov 19 01:04:14 2019
 Response via : Initial Calibration
 Integrator: ChemStation

Volume Inj. : 1 µl
 Signal #1 Phase : ZB-MR2 Signal #2 Phase: ZB-MR1
 Signal #1 Info : 30M x 0.32mm x0.2 Signal #2 Info : 30M x 0.32mm x0.5µm

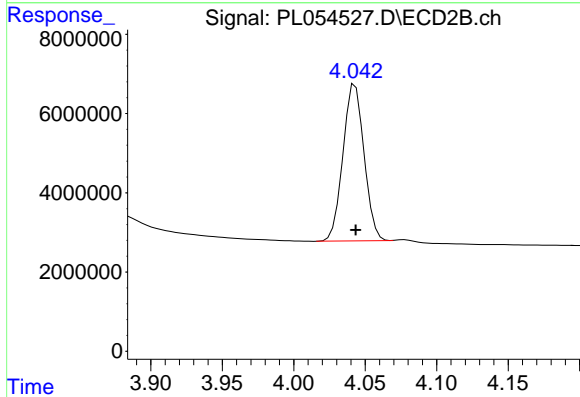




#1 Tetrachloro-m-xylene

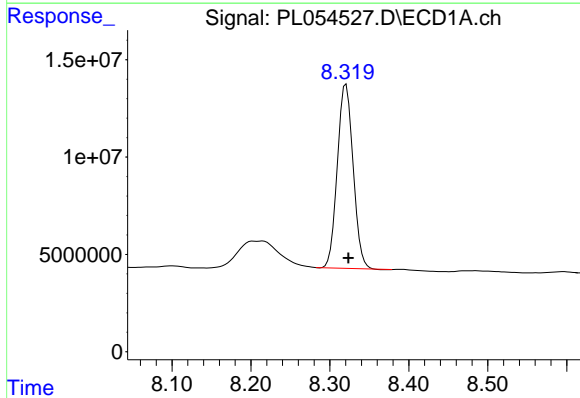
R.T.: 3.538 min
 Delta R.T.: 0.000 min
 Response: 172256525
 Conc: 16.57 ng/ml

Instrument :
 ECD_L
 ClientSampled :
 I.BLK



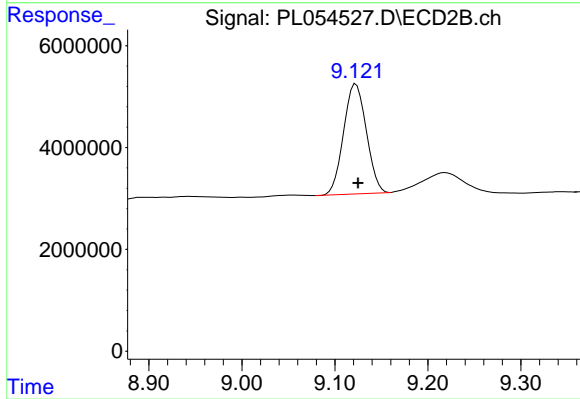
#1 Tetrachloro-m-xylene

R.T.: 4.043 min
 Delta R.T.: 0.000 min
 Response: 40644834
 Conc: 16.68 ng/ml



#28 Decachlorobiphenyl

R.T.: 8.321 min
 Delta R.T.: -0.003 min
 Response: 131361010
 Conc: 14.84 ng/ml



#28 Decachlorobiphenyl

R.T.: 9.123 min
 Delta R.T.: -0.002 min
 Response: 36799280
 Conc: 15.22 ng/ml