

Data Path : Z:\pestpcbsrv\HPCHEM1\ECD_L\Data\PL112119\
 Data File : PL054529.D
 Signal(s) : Signal #1: ECD1A.ch Signal #2: ECD2B.ch
 Acq On : 21 Nov 2019 17:27
 Operator : SG\AJ
 Sample : K5959-11
 Misc :
 ALS Vial : 21 Sample Multiplier: 1

Instrument :
 ECD_L
ClientSampleId :
 WS-112019-2-5-COMP-B2

Manual Integrations
APPROVED
 Ankita
 11/22/2019 1:13:55 PM

Integration File signal 1: autoint1.e
 Integration File signal 2: autoint2.e
 Quant Time: Nov 22 00:38:17 2019
 Quant Method : Z:\pestpcbsrv\HPCHEM1\ECD_L\methods\PL111819.M
 Quant Title : GC Extractables
 QLast Update : Tue Nov 19 01:04:14 2019
 Response via : Initial Calibration
 Integrator: ChemStation

Volume Inj. : 1 µl
 Signal #1 Phase : ZB-MR2 Signal #2 Phase: ZB-MR1
 Signal #1 Info : 30M x 0.32mm x0.2 Signal #2 Info : 30M x 0.32mm x0.5µm

Compound	RT#1	RT#2	Resp#1	Resp#2	ng/ml	ng/ml

System Monitoring Compounds						
1) SA Tetrachlo...	3.544	4.042	121.0E6	22706356	11.642m	9.320m
28) SA Decachlor...	8.324	9.126	93257870	26081364	10.537	10.787

Target Compounds

(f)=RT Delta > 1/2 Window (#)=Amounts differ by > 25% (m)=manual int.

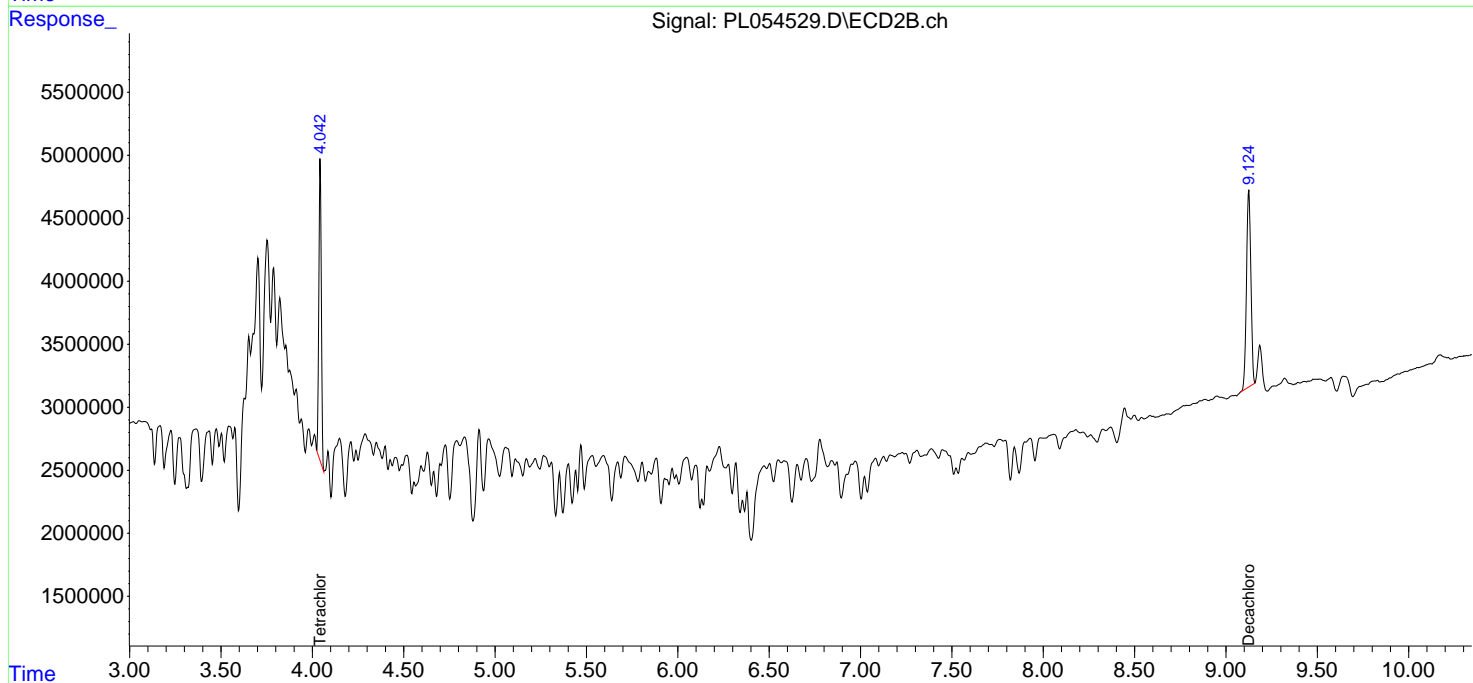
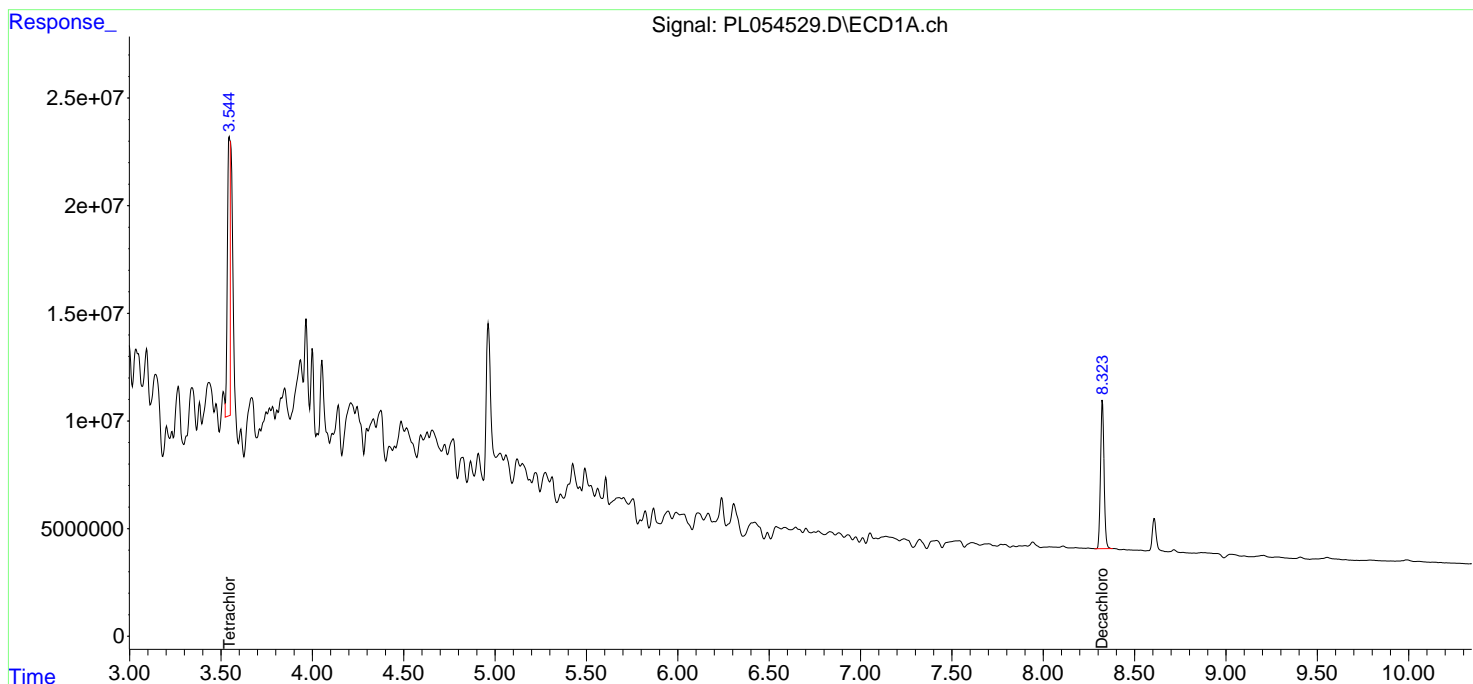
Data Path : Z:\pestpcbsrv\HPCHEM1\ECD_L\Data\PL112119\
 Data File : PL054529.D
 Signal(s) : Signal #1: ECD1A.ch Signal #2: ECD2B.ch
 Acq On : 21 Nov 2019 17:27
 Operator : SG\AJ
 Sample : K5959-11
 Misc :
 ALS Vial : 21 Sample Multiplier: 1

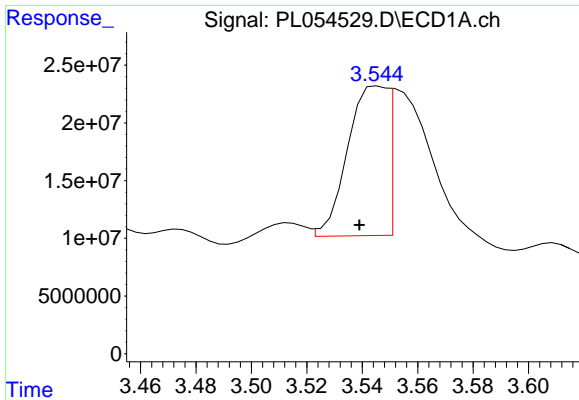
Instrument :
 ECD_L
Client Sampled :
 WS-112019-2-5-COMP-B2

Manual Integrations
APPROVED
 Ankita
 11/22/2019 1:13:55 PM

Integration File signal 1: autoint1.e
 Integration File signal 2: autoint2.e
 Quant Time: Nov 22 00:38:17 2019
 Quant Method : Z:\pestpcbsrv\HPCHEM1\ECD_L\methods\PL111819.M
 Quant Title : GC Extractables
 QLast Update : Tue Nov 19 01:04:14 2019
 Response via : Initial Calibration
 Integrator: ChemStation

Volume Inj. : 1 µl
 Signal #1 Phase : ZB-MR2 Signal #2 Phase: ZB-MR1
 Signal #1 Info : 30M x 0.32mm x0.2 Signal #2 Info : 30M x 0.32mm x0.5µm

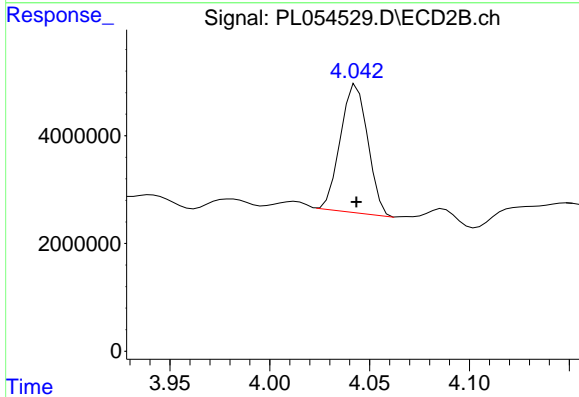




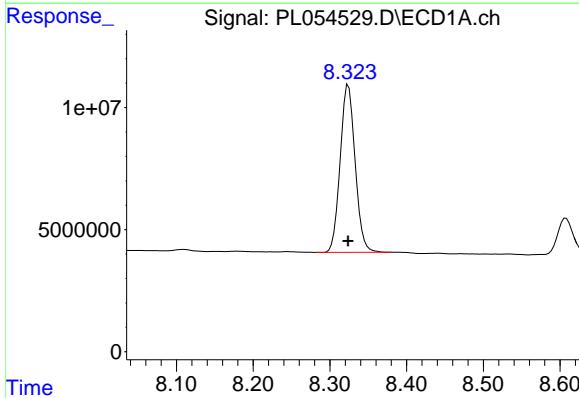
#1 Tetrachloro-m-xylene
 R.T.: 3.544 min
 Delta R.T.: 0.005 min
 Response: 121048715
 Conc: 11.64 ng/ml m

Instrument :
 ECD_L
 ClientSampleId :
 WS-112019-2-5-COMP-B2

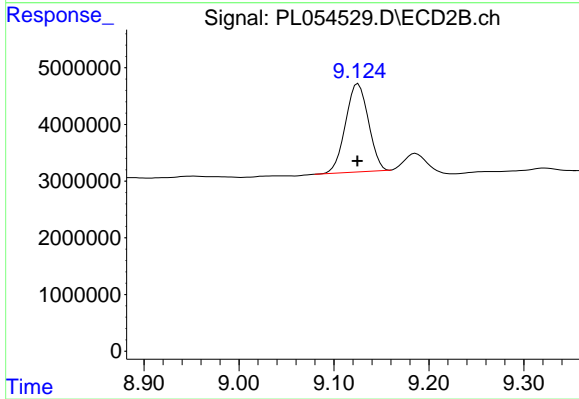
Manual Integrations
 APPROVED
 Ankita
 11/22/2019 1:13:55 PM



#1 Tetrachloro-m-xylene
 R.T.: 4.042 min
 Delta R.T.: -0.001 min
 Response: 22706356
 Conc: 9.32 ng/ml m



#28 Decachlorobiphenyl
 R.T.: 8.324 min
 Delta R.T.: 0.000 min
 Response: 93257870
 Conc: 10.54 ng/ml



#28 Decachlorobiphenyl
 R.T.: 9.126 min
 Delta R.T.: 0.000 min
 Response: 26081364
 Conc: 10.79 ng/ml