

Data Path : Z:\pestpcbsrv\HPCHEM1\ECD_L\Data\PL112219\
 Data File : PL054556.D
 Signal(s) : Signal #1: ECD1A.ch Signal #2: ECD2B.ch
 Acq On : 22 Nov 2019 16:01
 Operator : SG\AJ
 Sample : K5973-01
 Misc :
 ALS Vial : 17 Sample Multiplier: 1

Instrument :
 ECD_L
 ClientSampleId :
 DUCT-BANK-1

Integration File signal 1: autoint1.e
 Integration File signal 2: autoint2.e
 Quant Time: Nov 22 22:26:04 2019
 Quant Method : Z:\pestpcbsrv\HPCHEM1\ECD_L\methods\PL111819.M
 Quant Title : GC Extractables
 QLast Update : Tue Nov 19 01:04:14 2019
 Response via : Initial Calibration
 Integrator: ChemStation

Volume Inj. : 1 µl
 Signal #1 Phase : ZB-MR2 Signal #2 Phase: ZB-MR1
 Signal #1 Info : 30M x 0.32mm x0.2 Signal #2 Info : 30M x 0.32mm x0.5µm

Compound	RT#1	RT#2	Resp#1	Resp#2	ng/ml	ng/ml

System Monitoring Compounds						
1) SA Tetrachlo...	3.538	4.044	151.7E6	36869750	14.587	15.134
28) SA Decachlor...	8.322	9.125	154.4E6	39425437	17.450	16.306

Target Compounds

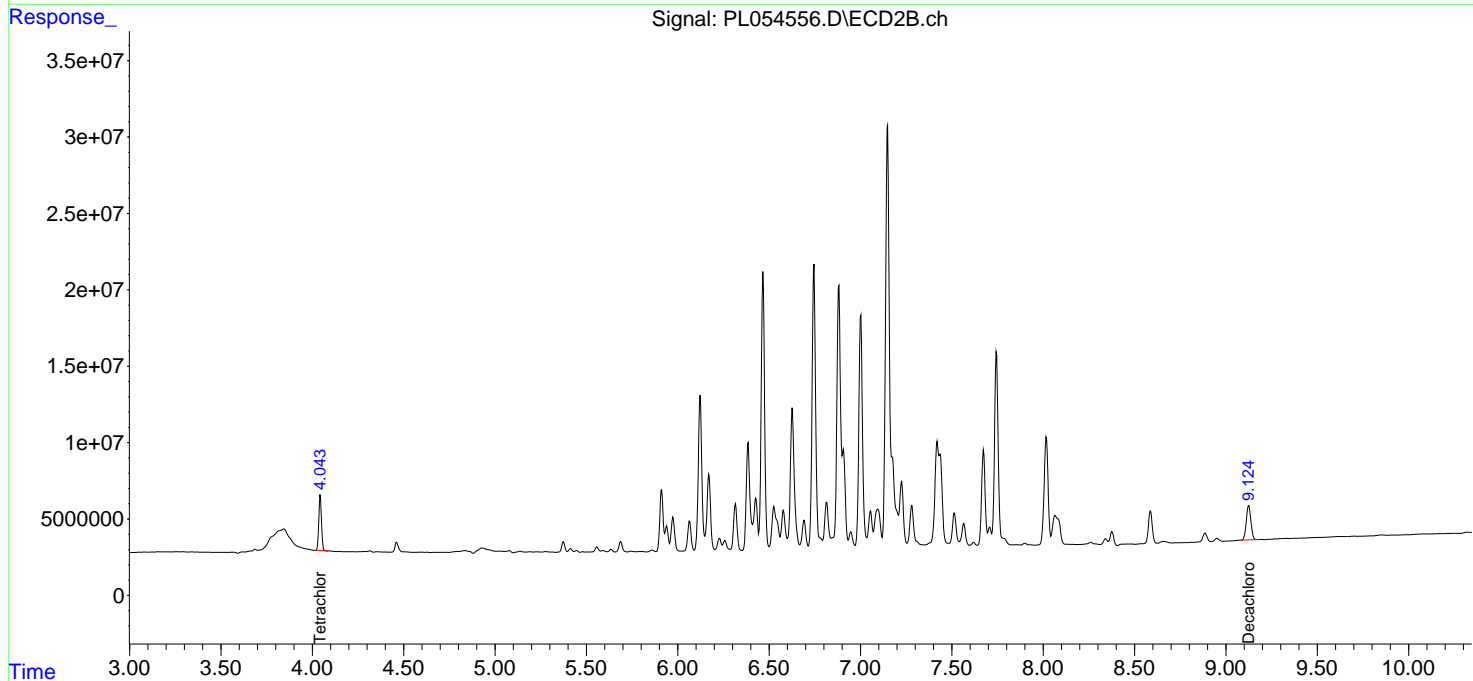
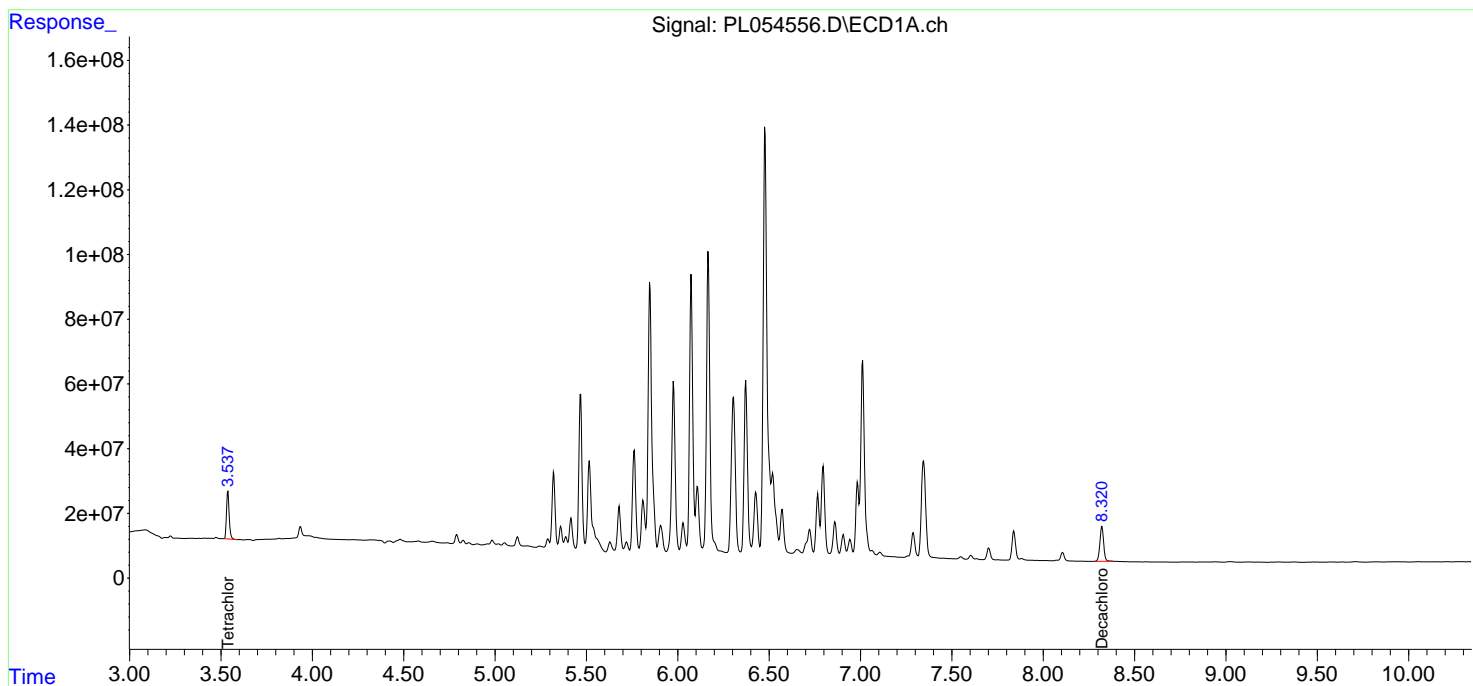
(f)=RT Delta > 1/2 Window (#)=Amounts differ by > 25% (m)=manual int.

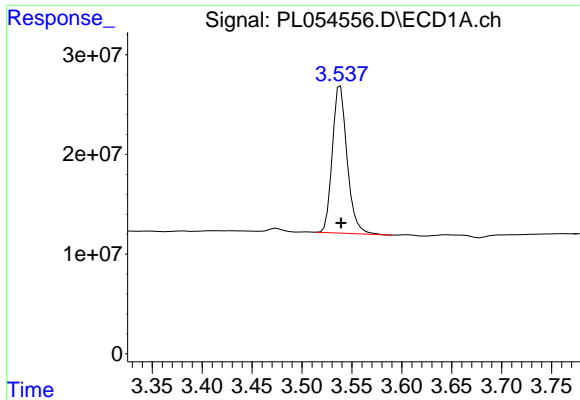
Data Path : Z:\pestpcbsrv\HPCHEM1\ECD_L\Data\PL112219\
 Data File : PL054556.D
 Signal(s) : Signal #1: ECD1A.ch Signal #2: ECD2B.ch
 Acq On : 22 Nov 2019 16:01
 Operator : SG\AJ
 Sample : K5973-01
 Misc :
 ALS Vial : 17 Sample Multiplier: 1

Instrument :
 ECD_L
 ClientSampled :
 DUCT-BANK-1

Integration File signal 1: autoint1.e
 Integration File signal 2: autoint2.e
 Quant Time: Nov 22 22:26:04 2019
 Quant Method : Z:\pestpcbsrv\HPCHEM1\ECD_L\methods\PL111819.M
 Quant Title : GC Extractables
 QLast Update : Tue Nov 19 01:04:14 2019
 Response via : Initial Calibration
 Integrator: ChemStation

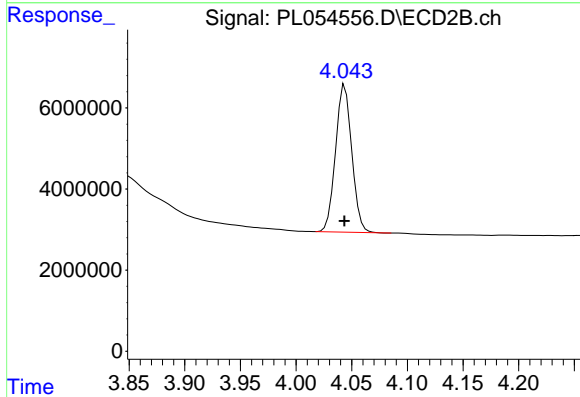
Volume Inj. : 1 µl
 Signal #1 Phase : ZB-MR2 Signal #2 Phase: ZB-MR1
 Signal #1 Info : 30M x 0.32mm x0.2 Signal #2 Info : 30M x 0.32mm x0.5µm



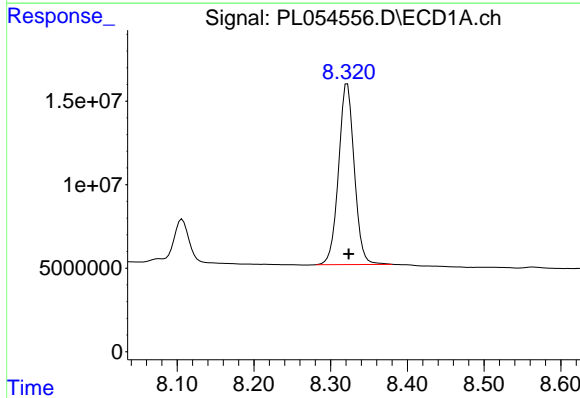


#1 Tetrachloro-m-xylene
 R.T.: 3.538 min
 Delta R.T.: 0.000 min
 Response: 151670687
 Conc: 14.59 ng/ml

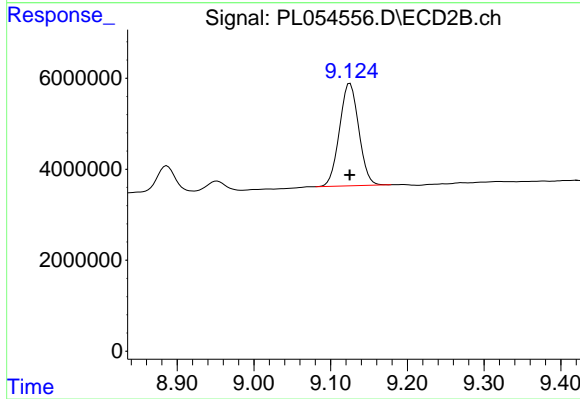
Instrument :
 ECD_L
 ClientSampled :
 DUCT-BANK-1



#1 Tetrachloro-m-xylene
 R.T.: 4.044 min
 Delta R.T.: 0.000 min
 Response: 36869750
 Conc: 15.13 ng/ml



#28 Decachlorobiphenyl
 R.T.: 8.322 min
 Delta R.T.: -0.002 min
 Response: 154449118
 Conc: 17.45 ng/ml



#28 Decachlorobiphenyl
 R.T.: 9.125 min
 Delta R.T.: 0.000 min
 Response: 39425437
 Conc: 16.31 ng/ml