

Data Path : Z:\pestpcbsrv\HPCHEM1\ECD_L\Data\PL112222\
 Data File : PL079351.D
 Signal(s) : Signal #1: ECD1A.ch Signal #2: ECD2B.ch
 Acq On : 22 Nov 2022 09:56
 Operator : AR\AJ
 Sample : PSTDCCC050
 Misc :
 ALS Vial : 4 Sample Multiplier: 1

Instrument :
 ECD_L
 ClientSampleId :

Integration File signal 1: autoint1.e
 Integration File signal 2: autoint2.e
 Quant Time: Nov 22 20:38:50 2022
 Quant Method : Z:\pestpcbsrv\HPCHEM1\ECD_L\methods\PL111622.M
 Quant Title : GC Extractables
 QLast Update : Wed Nov 16 15:31:11 2022
 Response via : Initial Calibration
 Integrator: ChemStation

Volume Inj. : 1 µl
 Signal #1 Phase : ZB-MR2 Signal #2 Phase: ZB-MR1
 Signal #1 Info : 30M x 0.32mm x0.2 Signal #2 Info : 30M x 0.32mm x0.5µm

	Compound	RT#1	RT#2	Resp#1	Resp#2	ng/ml	ng/ml

System Monitoring Compounds							
1)	SA Tetrachlo...	3.323	2.565	99791005	114.4E6	47.921	44.922
28)	SA Decachlor...	8.773	7.633	80613614	93790359	48.192	45.212
Target Compounds							
2)	A alpha-BHC	3.783	3.051	152.8E6	180.7E6	48.495	44.690
3)	MA gamma-BHC...	4.116	3.372	145.0E6	163.5E6	48.315	46.070
4)	MA Heptachlor	4.686	3.699	147.6E6	160.6E6	49.323	44.206
5)	MB Aldrin	5.024	3.970	138.5E6	158.9E6	49.484	45.500
6)	B beta-BHC	4.332	3.673	61851208	63356046	47.033	45.323
7)	B delta-BHC	4.572	3.892	129.3E6	161.4E6	57.091	44.957
8)	B Heptachlo...	5.458	4.467	126.9E6	140.0E6	53.704	45.085
9)	A Endosulfan I	5.842	4.829	117.2E6	133.7E6	48.803	45.226
10)	B gamma-Chl...	5.713	4.715	127.5E6	141.2E6	49.893	45.563
11)	B alpha-Chl...	5.790	4.777	126.3E6	138.3E6	49.082	45.295
12)	B 4,4'-DDE	5.974	4.972	109.5E6	130.2E6	47.913	45.457
13)	MA Dieldrin	6.120	5.092	117.6E6	139.9E6	48.474	45.488
14)	MA Endrin	6.350	5.362	97816148	118.1E6	44.204	45.200
15)	B Endosulfa...	6.580	5.659	95216061	113.7E6	42.212	42.486
16)	A 4,4'-DDD	6.498	5.523	92663879	112.1E6	52.762	47.916
17)	MA 4,4'-DDT	6.808	5.769	90459042	102.7E6	43.396	42.082
18)	B Endrin al...	6.712	5.838	78187788	89671419	48.917	42.961
19)	B Endosulfa...	6.944	6.060	99122689	114.8E6	49.316	43.992
20)	A Methoxychlor	7.292	6.346	47526120	53873720	44.581	40.780
21)	B Endrin ke...	7.431	6.556	108.1E6	131.2E6	51.919	46.398
22)	Mirex	7.888	6.728	79954935	94855822	50.205	44.758
24)	Chlordane-2	5.024f	0.000	138.5E6	0	1360.410	N.D. #
25)	Chlordane-3	5.713	4.715	127.5E6	141.2E6	331.070	443.079 #
26)	Chlordane-4	5.790	4.777	126.3E6	138.3E6	266.871	402.907 #
27)	Chlordane-5	0.000	5.439	0	154314	N.D.	1.810 #

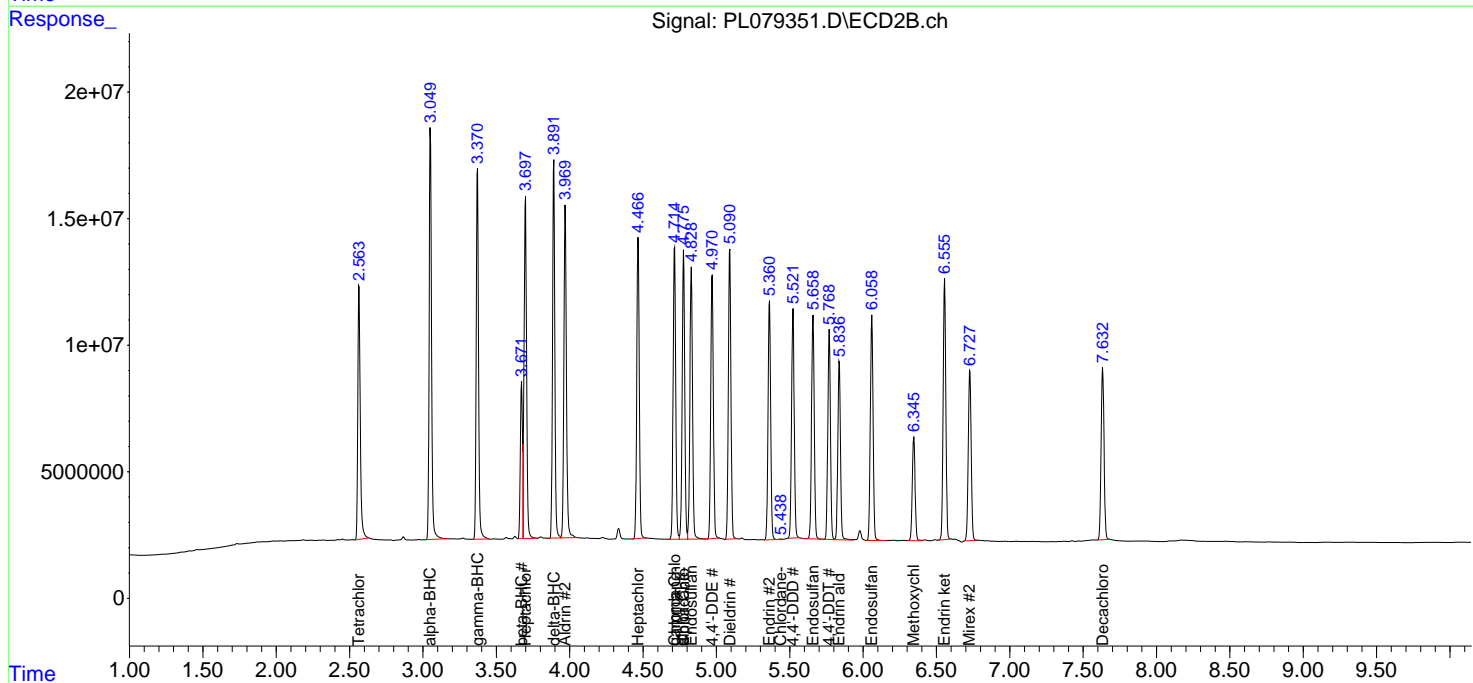
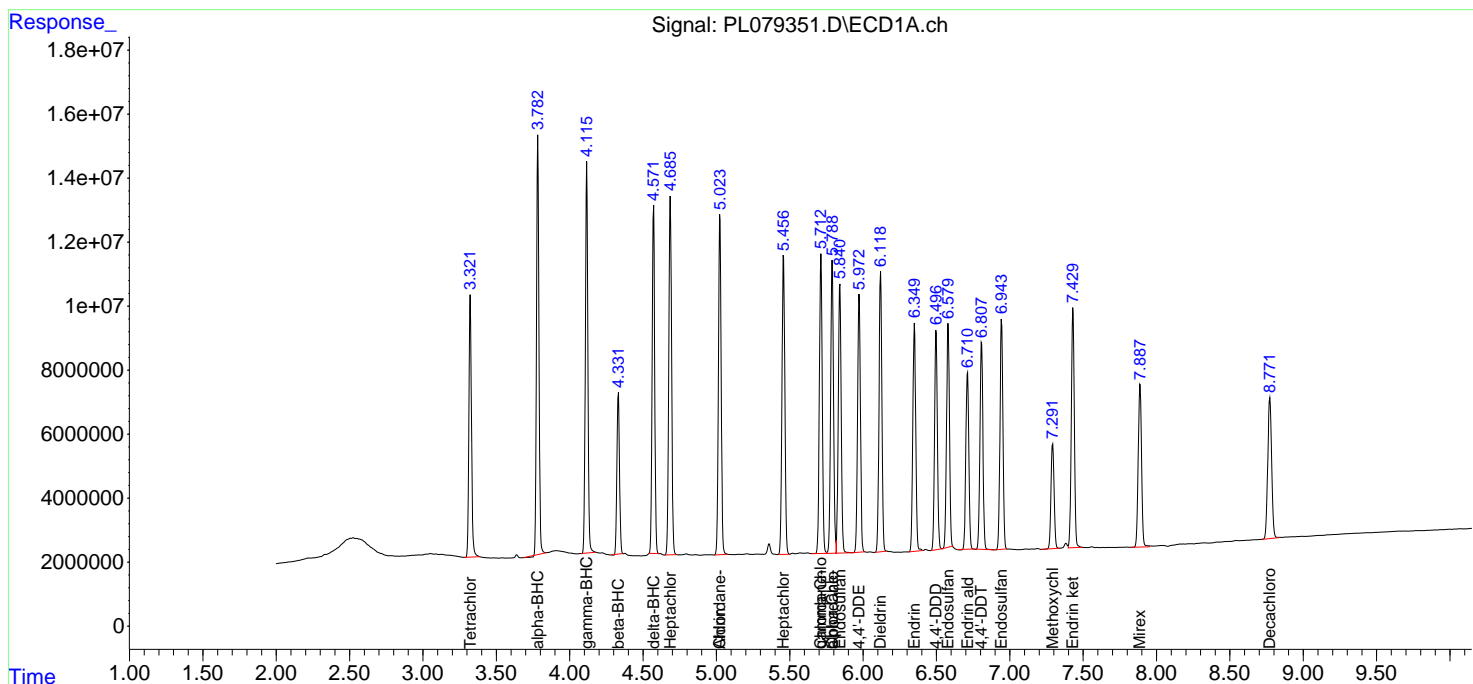
(f)=RT Delta > 1/2 Window (#)=Amounts differ by > 25% (m)=manual int.

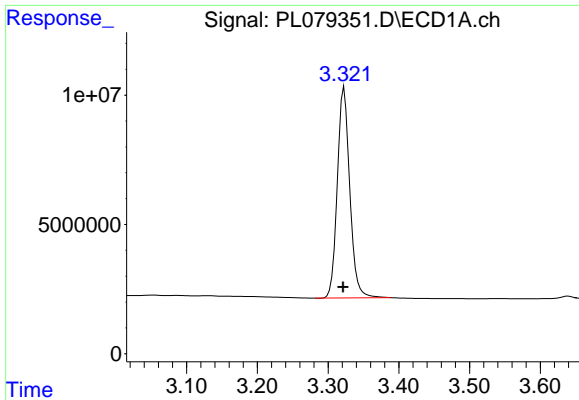
Data Path : Z:\pestpcbsrv\HPCHEM1\ECD_L\Data\PL112222\
 Data File : PL079351.D
 Signal(s) : Signal #1: ECD1A.ch Signal #2: ECD2B.ch
 Acq On : 22 Nov 2022 09:56
 Operator : AR\AJ
 Sample : PSTDCCC050
 Misc :
 ALS Vial : 4 Sample Multiplier: 1

Instrument :
 ECD_L
 ClientSampleId :

Integration File signal 1: autoint1.e
 Integration File signal 2: autoint2.e
 Quant Time: Nov 22 20:38:50 2022
 Quant Method : Z:\pestpcbsrv\HPCHEM1\ECD_L\methods\PL111622.M
 Quant Title : GC Extractables
 QLast Update : Wed Nov 16 15:31:11 2022
 Response via : Initial Calibration
 Integrator: ChemStation

Volume Inj. : 1 µl
 Signal #1 Phase : ZB-MR2 Signal #2 Phase: ZB-MR1
 Signal #1 Info : 30M x 0.32mm x0.2 Signal #2 Info : 30M x 0.32mm x0.5µm

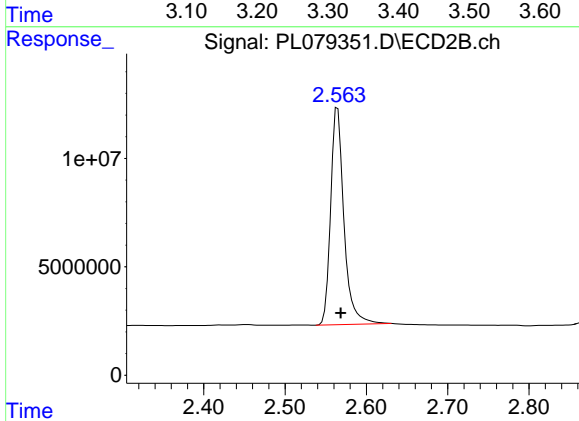




#1 Tetrachloro-m-xylene

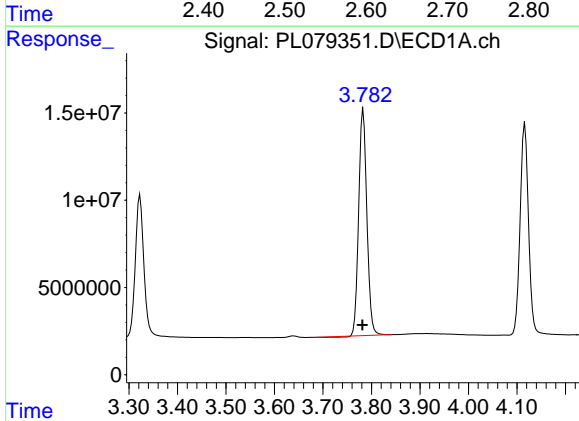
R.T.: 3.323 min
 Delta R.T.: 0.002 min
 Response: 99791005
 Conc: 47.92 ng/ml

Instrument :
 ECD_L
 ClientSampleId :



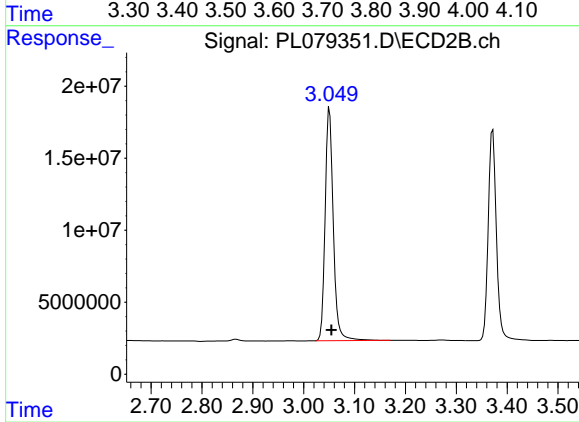
#1 Tetrachloro-m-xylene

R.T.: 2.565 min
 Delta R.T.: -0.004 min
 Response: 114410462
 Conc: 44.92 ng/ml



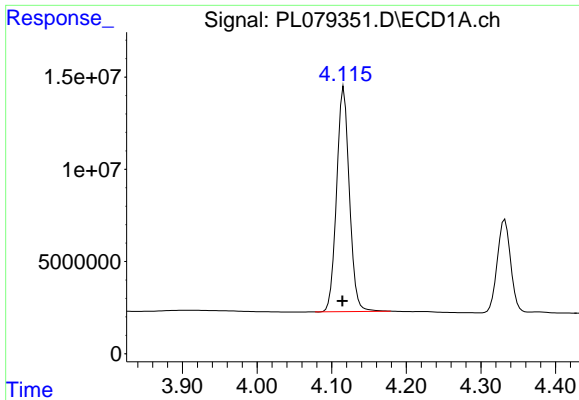
#2 alpha-BHC

R.T.: 3.783 min
 Delta R.T.: 0.002 min
 Response: 152814244
 Conc: 48.49 ng/ml



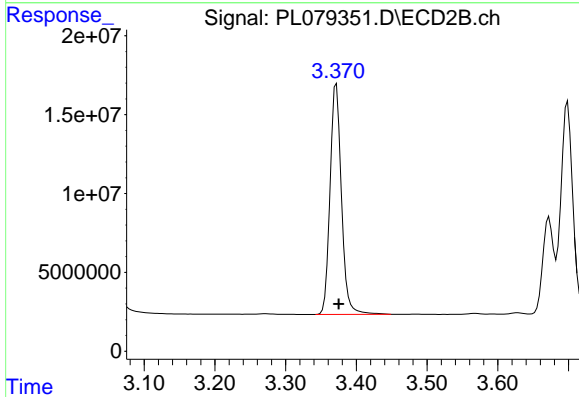
#2 alpha-BHC

R.T.: 3.051 min
 Delta R.T.: -0.004 min
 Response: 180712887
 Conc: 44.69 ng/ml

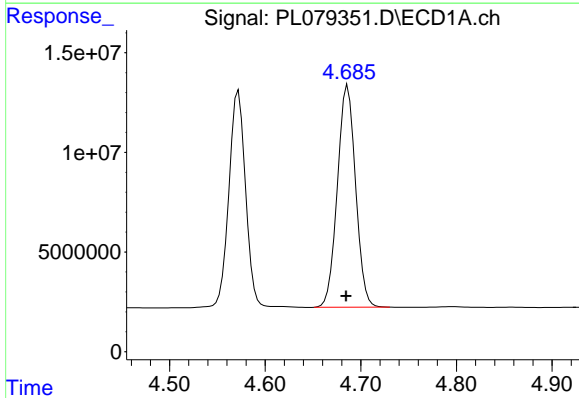


#3 gamma-BHC (Lindane)
 R.T.: 4.116 min
 Delta R.T.: 0.002 min
 Response: 145018204
 Conc: 48.31 ng/ml

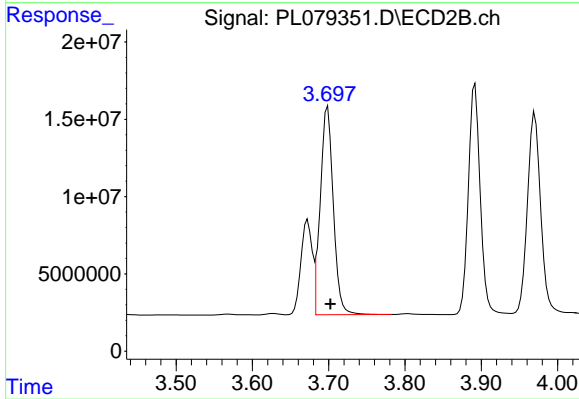
Instrument :
 ECD_L
 ClientSampleId :



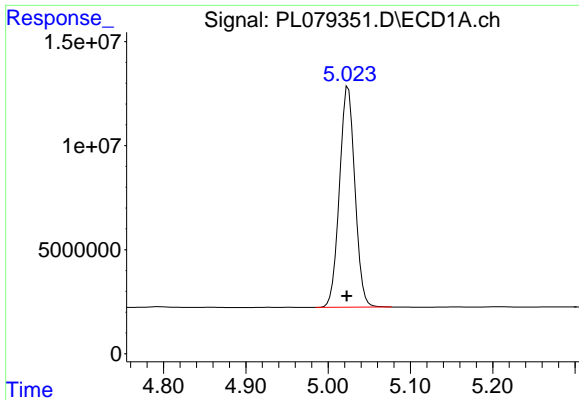
#3 gamma-BHC (Lindane)
 R.T.: 3.372 min
 Delta R.T.: -0.003 min
 Response: 163453069
 Conc: 46.07 ng/ml



#4 Heptachlor
 R.T.: 4.686 min
 Delta R.T.: 0.002 min
 Response: 147559927
 Conc: 49.32 ng/ml

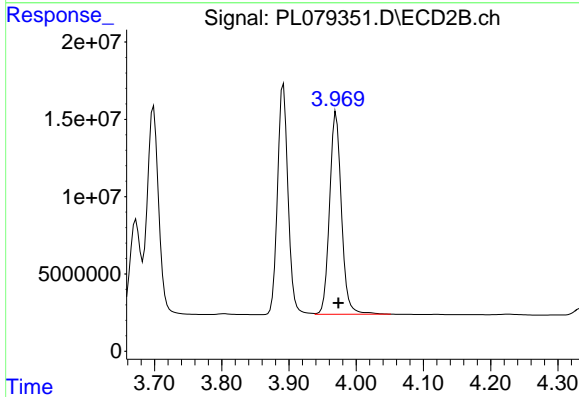


#4 Heptachlor
 R.T.: 3.699 min
 Delta R.T.: -0.004 min
 Response: 160594646
 Conc: 44.21 ng/ml

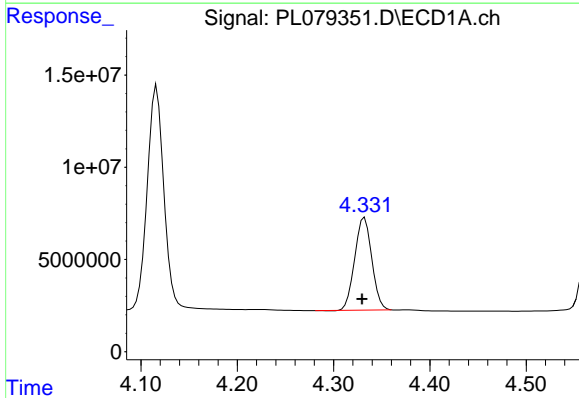


#5 Aldrin
 R.T.: 5.024 min
 Delta R.T.: 0.002 min
 Response: 138470244
 Conc: 49.48 ng/ml

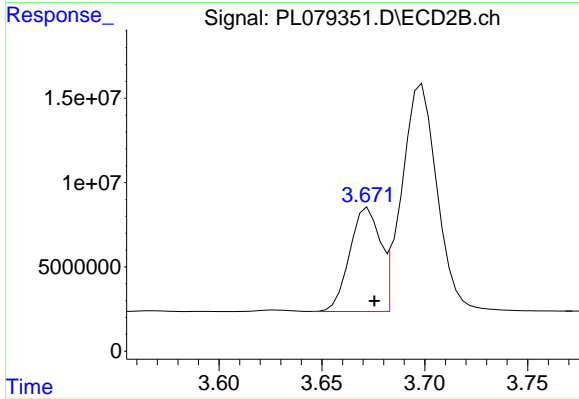
Instrument :
 ECD_L
 ClientSampleId :



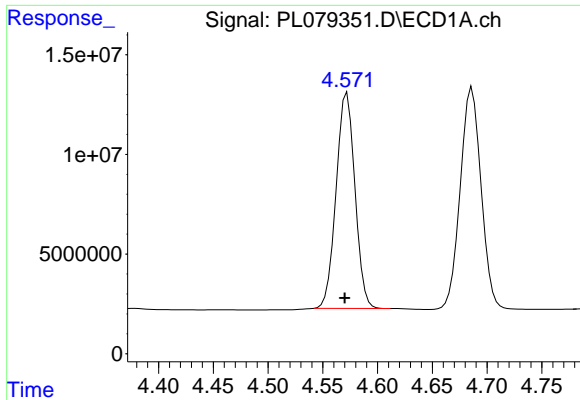
#5 Aldrin
 R.T.: 3.970 min
 Delta R.T.: -0.003 min
 Response: 158931442
 Conc: 45.50 ng/ml



#6 beta-BHC
 R.T.: 4.332 min
 Delta R.T.: 0.003 min
 Response: 61851208
 Conc: 47.03 ng/ml



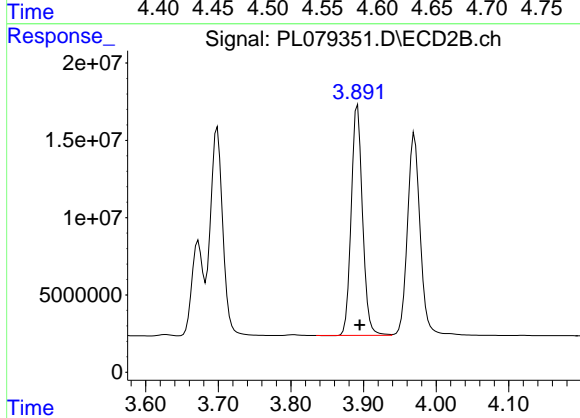
#6 beta-BHC
 R.T.: 3.673 min
 Delta R.T.: -0.003 min
 Response: 63356046
 Conc: 45.32 ng/ml



#7 delta-BHC

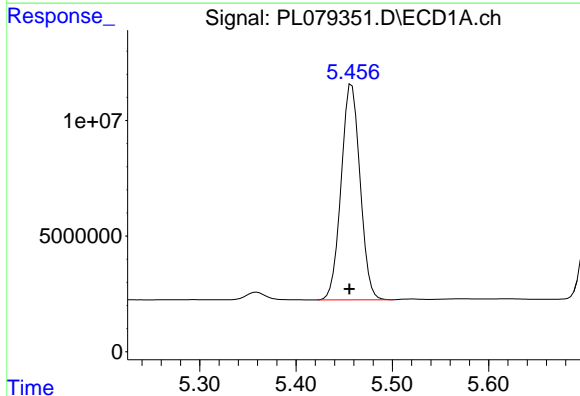
R.T.: 4.572 min
Delta R.T.: 0.002 min
Response: 129284935
Conc: 57.09 ng/ml

Instrument :
ECD_L
ClientSampleId :



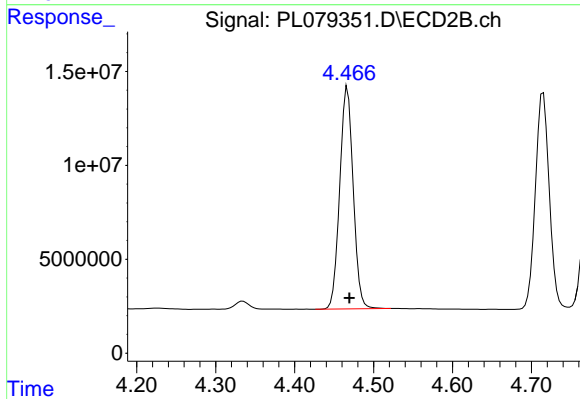
#7 delta-BHC

R.T.: 3.892 min
Delta R.T.: -0.003 min
Response: 161427442
Conc: 44.96 ng/ml



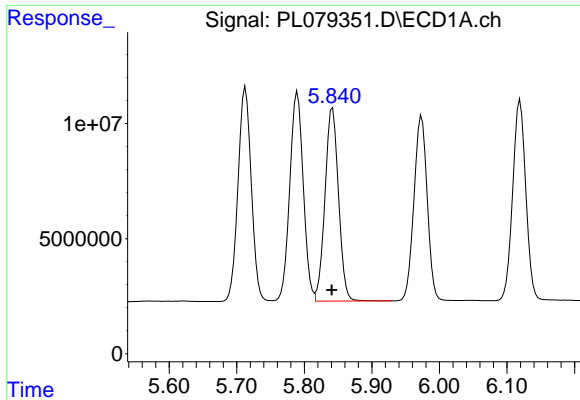
#8 Heptachlor epoxide

R.T.: 5.458 min
Delta R.T.: 0.003 min
Response: 126926020
Conc: 53.70 ng/ml



#8 Heptachlor epoxide

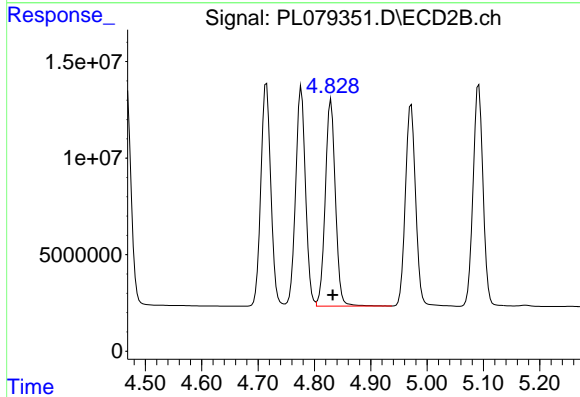
R.T.: 4.467 min
Delta R.T.: -0.003 min
Response: 139985042
Conc: 45.09 ng/ml



#9 Endosulfan I

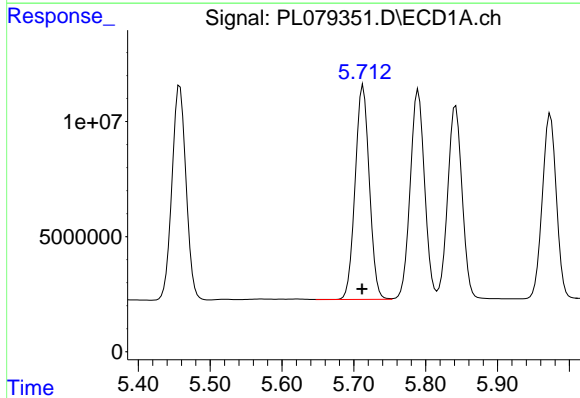
R.T.: 5.842 min
 Delta R.T.: 0.001 min
 Response: 117200818
 Conc: 48.80 ng/ml

Instrument :
 ECD_L
 ClientSampleId :



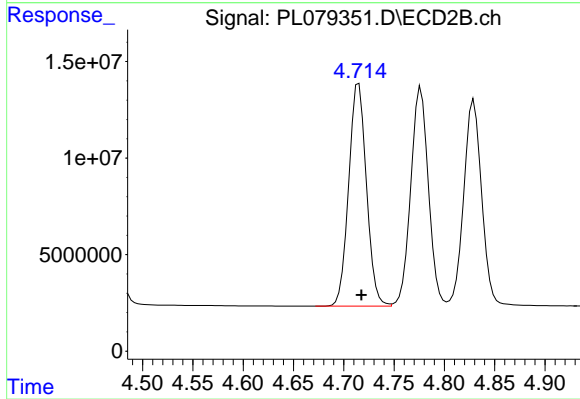
#9 Endosulfan I

R.T.: 4.829 min
 Delta R.T.: -0.003 min
 Response: 133658701
 Conc: 45.23 ng/ml



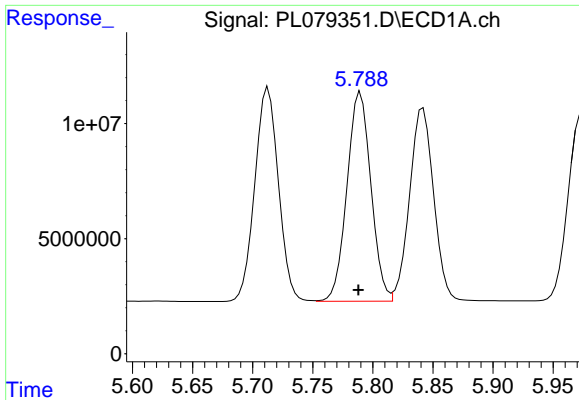
#10 gamma-Chlordane

R.T.: 5.713 min
 Delta R.T.: 0.001 min
 Response: 127528983
 Conc: 49.89 ng/ml



#10 gamma-Chlordane

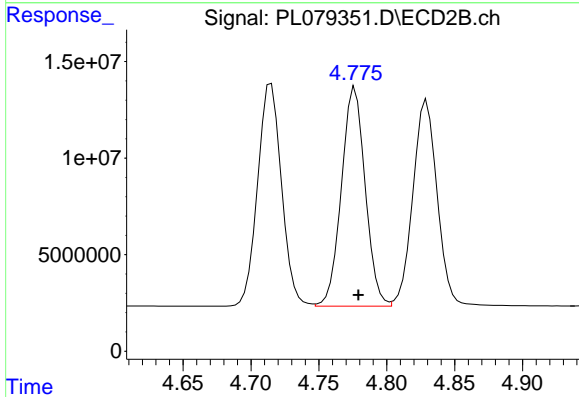
R.T.: 4.715 min
 Delta R.T.: -0.003 min
 Response: 141171888
 Conc: 45.56 ng/ml



#11 alpha-Chlordane

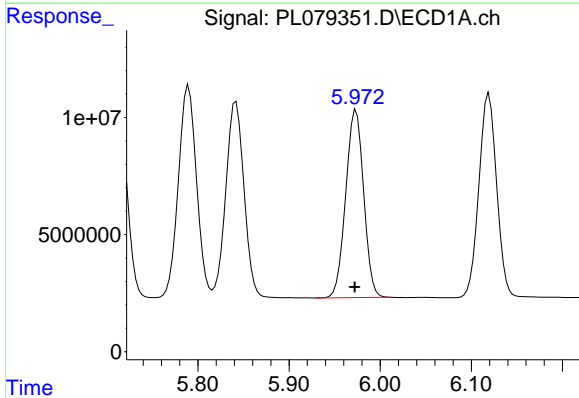
R.T.: 5.790 min
 Delta R.T.: 0.002 min
 Response: 126273430
 Conc: 49.08 ng/ml

Instrument :
 ECD_L
 ClientSampleId :



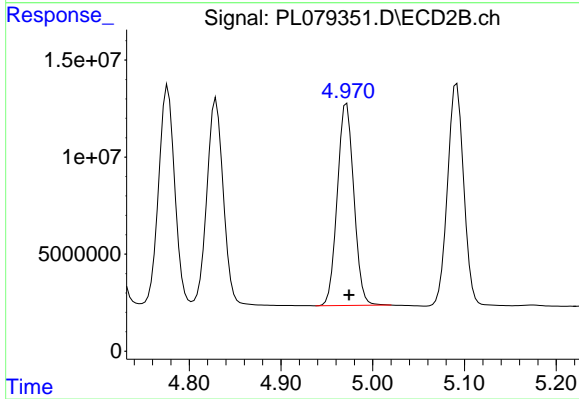
#11 alpha-Chlordane

R.T.: 4.777 min
 Delta R.T.: -0.003 min
 Response: 138262865
 Conc: 45.29 ng/ml



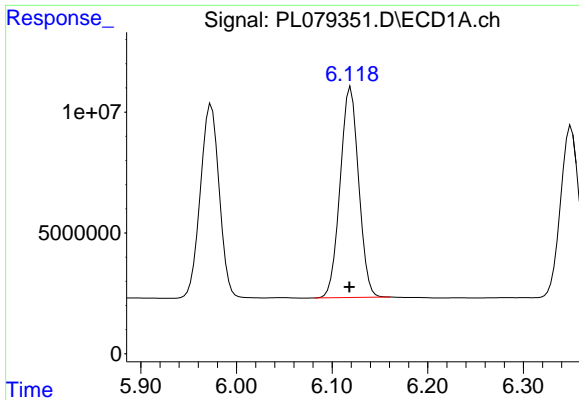
#12 4,4'-DDE

R.T.: 5.974 min
 Delta R.T.: 0.002 min
 Response: 109463911
 Conc: 47.91 ng/ml



#12 4,4'-DDE

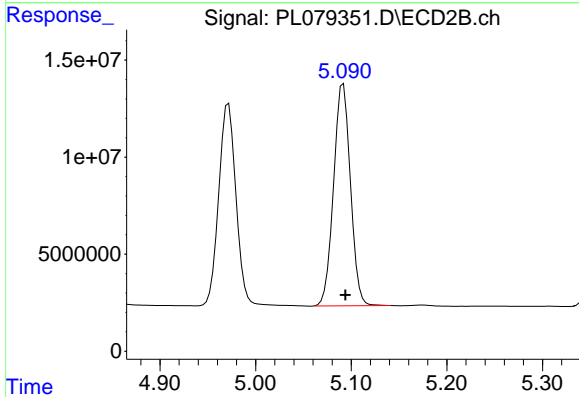
R.T.: 4.972 min
 Delta R.T.: -0.003 min
 Response: 130194005
 Conc: 45.46 ng/ml



#13 Dieldrin

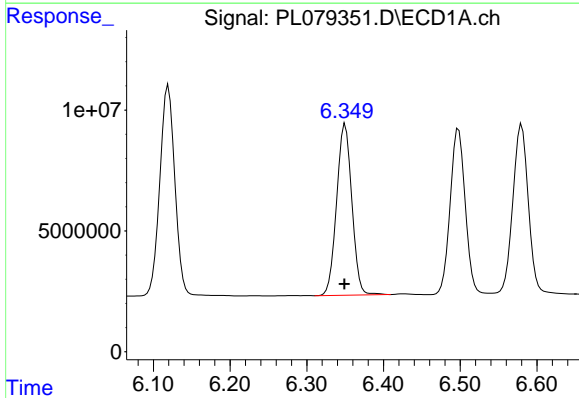
R.T.: 6.120 min
 Delta R.T.: 0.002 min
 Response: 117591611
 Conc: 48.47 ng/ml

Instrument :
 ECD_L
 ClientSampleId :



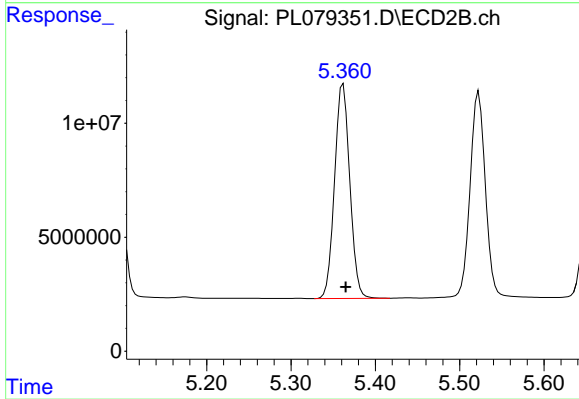
#13 Dieldrin

R.T.: 5.092 min
 Delta R.T.: -0.002 min
 Response: 139881300
 Conc: 45.49 ng/ml



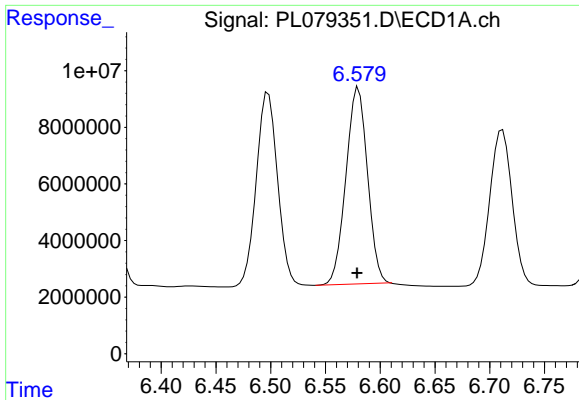
#14 Endrin

R.T.: 6.350 min
 Delta R.T.: 0.001 min
 Response: 97816148
 Conc: 44.20 ng/ml



#14 Endrin

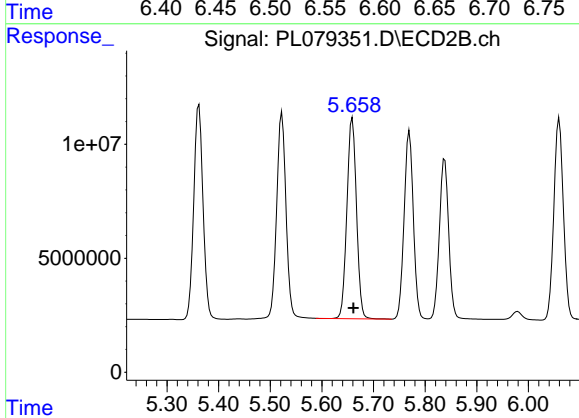
R.T.: 5.362 min
 Delta R.T.: -0.003 min
 Response: 118055170
 Conc: 45.20 ng/ml



#15 Endosulfan II

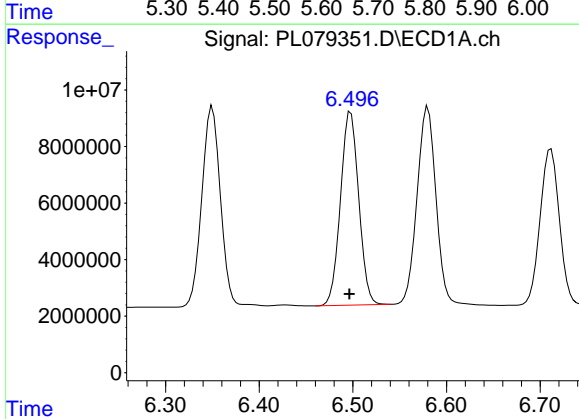
R.T.: 6.580 min
Delta R.T.: 0.001 min
Response: 95216061
Conc: 42.21 ng/ml

Instrument :
ECD_L
ClientSampleId :



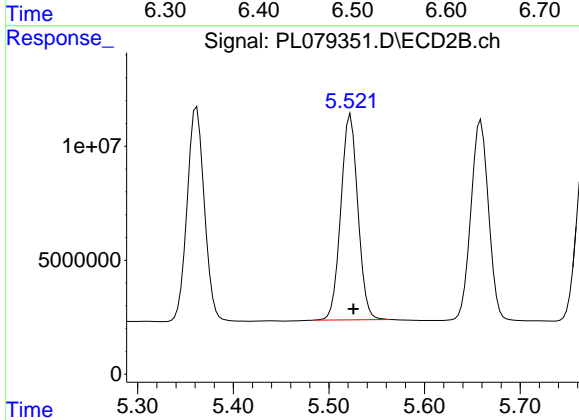
#15 Endosulfan II

R.T.: 5.659 min
Delta R.T.: -0.002 min
Response: 113726333
Conc: 42.49 ng/ml



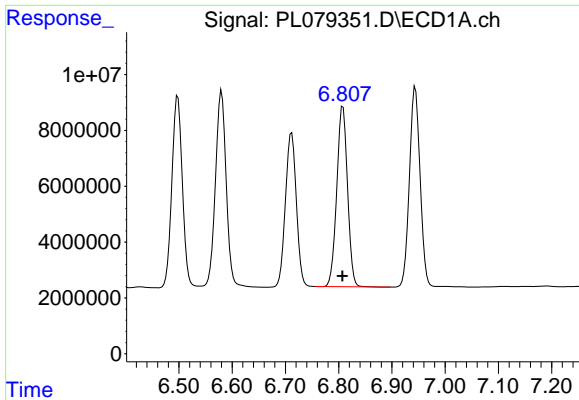
#16 4,4'-DDD

R.T.: 6.498 min
Delta R.T.: 0.001 min
Response: 92663879
Conc: 52.76 ng/ml



#16 4,4'-DDD

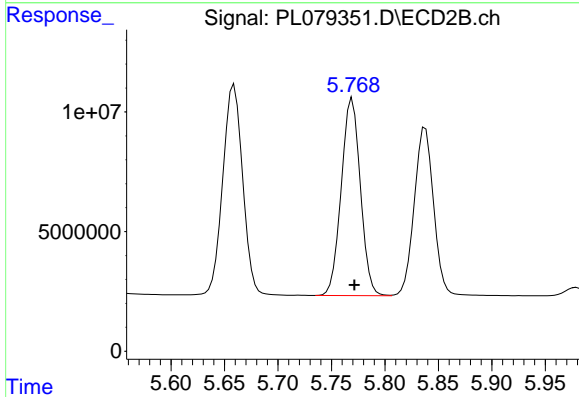
R.T.: 5.523 min
Delta R.T.: -0.003 min
Response: 112052364
Conc: 47.92 ng/ml



#17 4,4'-DDT

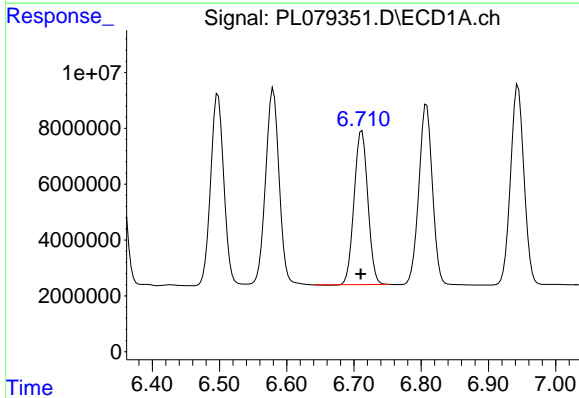
R.T.: 6.808 min
 Delta R.T.: 0.001 min
 Response: 90459042
 Conc: 43.40 ng/ml

Instrument :
 ECD_L
 ClientSampleId :



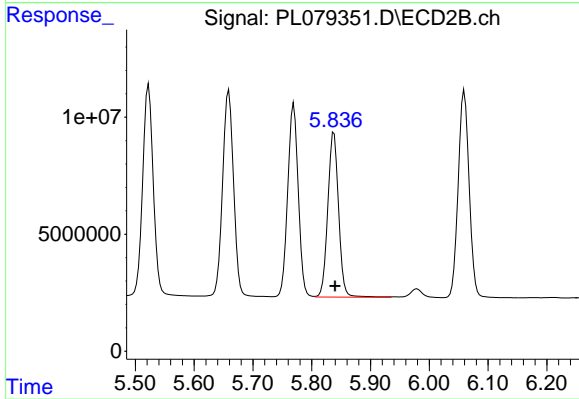
#17 4,4'-DDT

R.T.: 5.769 min
 Delta R.T.: -0.002 min
 Response: 102713614
 Conc: 42.08 ng/ml



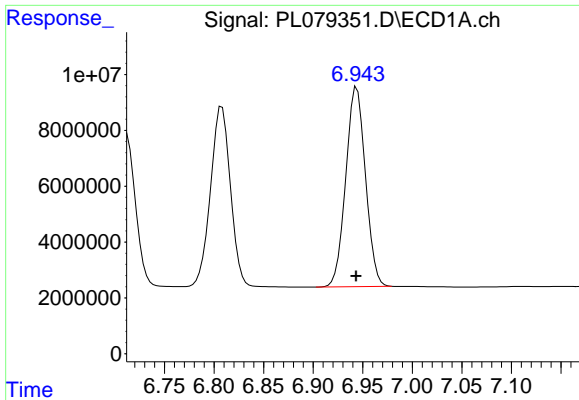
#18 Endrin aldehyde

R.T.: 6.712 min
 Delta R.T.: 0.002 min
 Response: 78187788
 Conc: 48.92 ng/ml



#18 Endrin aldehyde

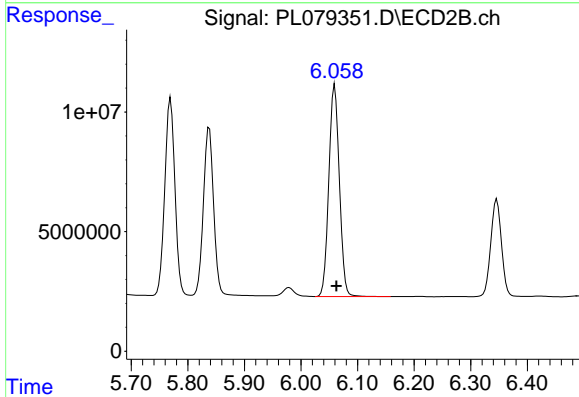
R.T.: 5.838 min
 Delta R.T.: -0.002 min
 Response: 89671419
 Conc: 42.96 ng/ml



#19 Endosulfan Sulfate

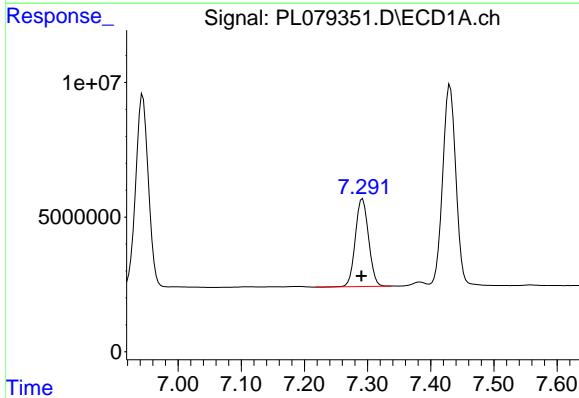
R.T.: 6.944 min
 Delta R.T.: 0.000 min
 Response: 99122689
 Conc: 49.32 ng/ml

Instrument :
 ECD_L
 ClientSampleId :



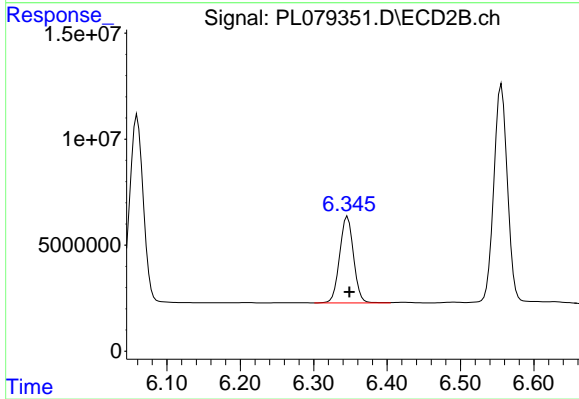
#19 Endosulfan Sulfate

R.T.: 6.060 min
 Delta R.T.: -0.003 min
 Response: 114779025
 Conc: 43.99 ng/ml



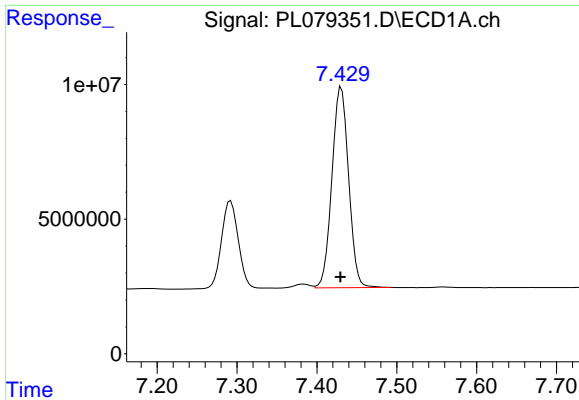
#20 Methoxychlor

R.T.: 7.292 min
 Delta R.T.: 0.002 min
 Response: 47526120
 Conc: 44.58 ng/ml



#20 Methoxychlor

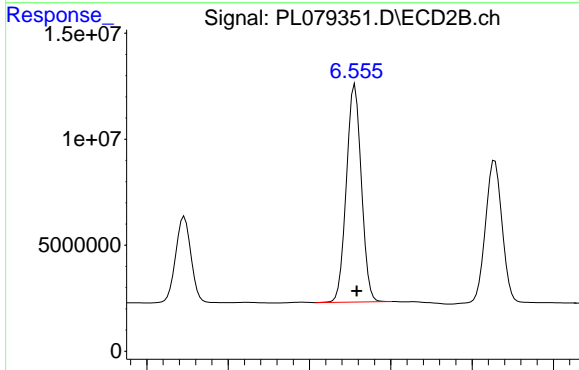
R.T.: 6.346 min
 Delta R.T.: -0.003 min
 Response: 53873720
 Conc: 40.78 ng/ml



#21 Endrin ketone

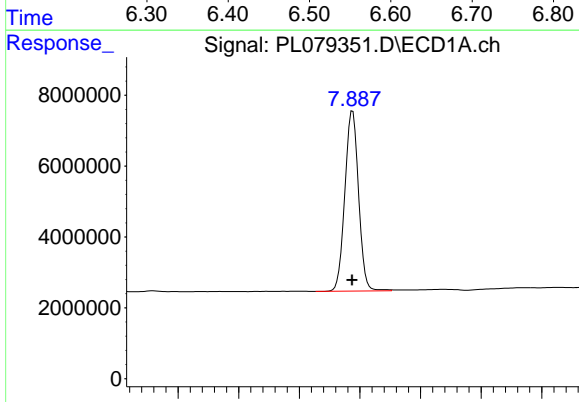
R.T.: 7.431 min
 Delta R.T.: 0.001 min
 Response: 108097059
 Conc: 51.92 ng/ml

Instrument :
 ECD_L
 ClientSampleId :



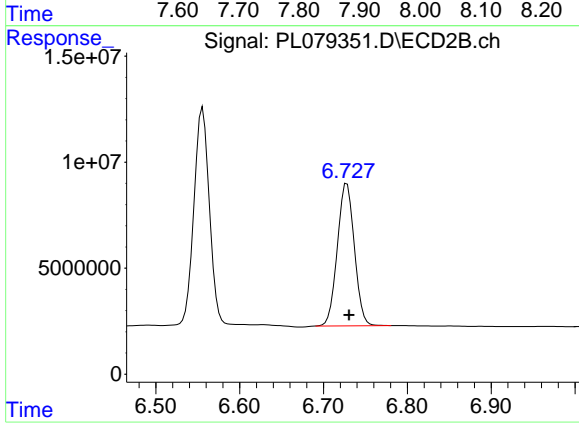
#21 Endrin ketone

R.T.: 6.556 min
 Delta R.T.: -0.002 min
 Response: 131238901
 Conc: 46.40 ng/ml



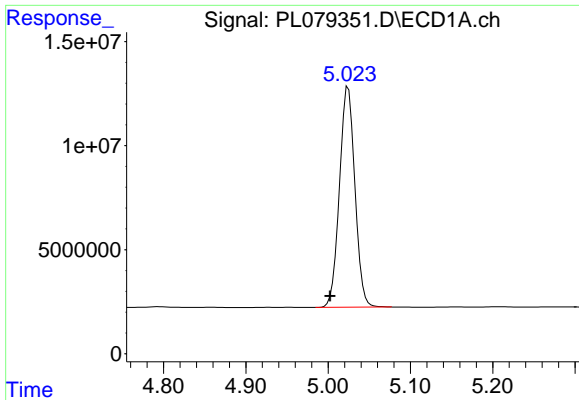
#22 Mirex

R.T.: 7.888 min
 Delta R.T.: 0.001 min
 Response: 79954935
 Conc: 50.21 ng/ml



#22 Mirex

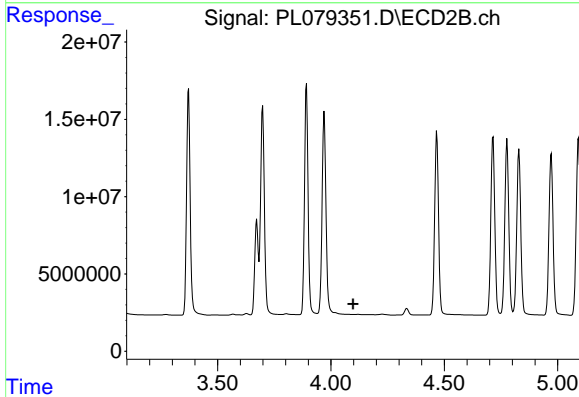
R.T.: 6.728 min
 Delta R.T.: -0.003 min
 Response: 94855822
 Conc: 44.76 ng/ml



#24 Chlordane-2

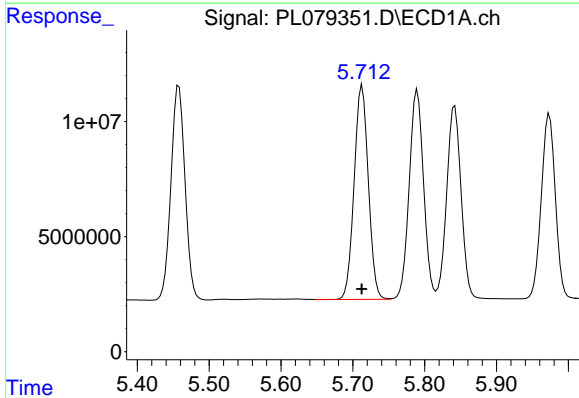
R.T.: 5.024 min
 Delta R.T.: 0.022 min
 Response: 138470244
 Conc: 1360.41 ng/m

Instrument :
 ECD_L
 ClientSampleId :



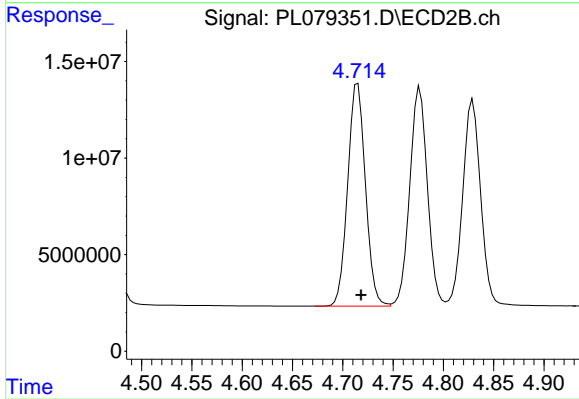
#24 Chlordane-2

R.T.: 0.000 min
 Exp R.T. : 4.098 min
 Response: 0
 Conc: N.D.



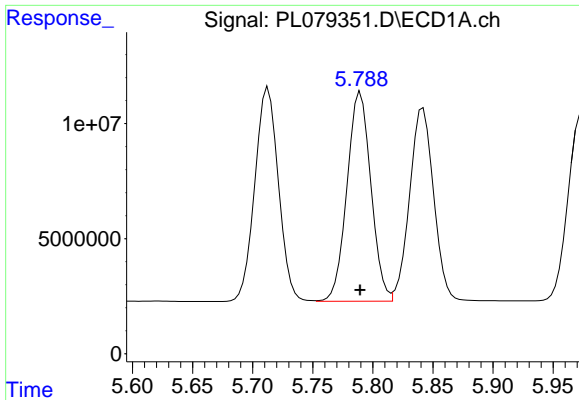
#25 Chlordane-3

R.T.: 5.713 min
 Delta R.T.: 0.000 min
 Response: 127528983
 Conc: 331.07 ng/ml



#25 Chlordane-3

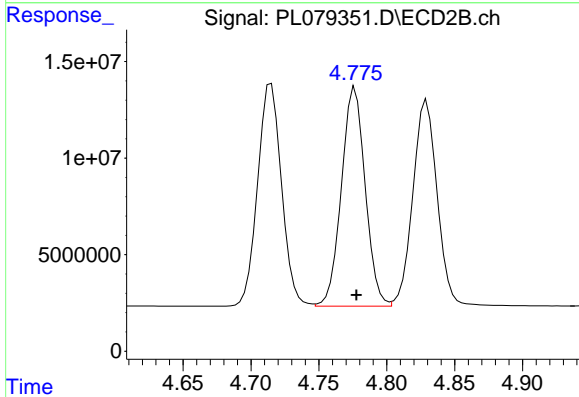
R.T.: 4.715 min
 Delta R.T.: -0.003 min
 Response: 141171888
 Conc: 443.08 ng/ml



#26 Chlordane-4

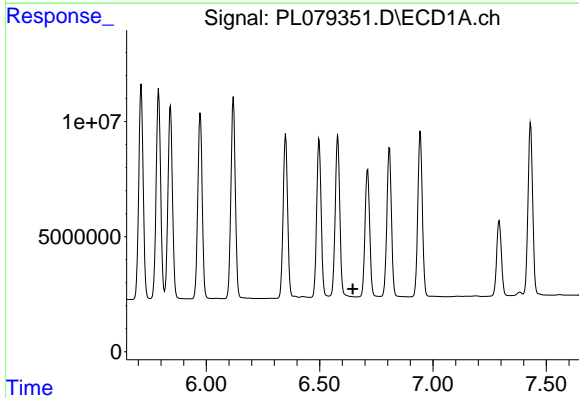
R.T.: 5.790 min
 Delta R.T.: 0.000 min
 Response: 126273430
 Conc: 266.87 ng/ml

Instrument :
 ECD_L
 ClientSampleId :



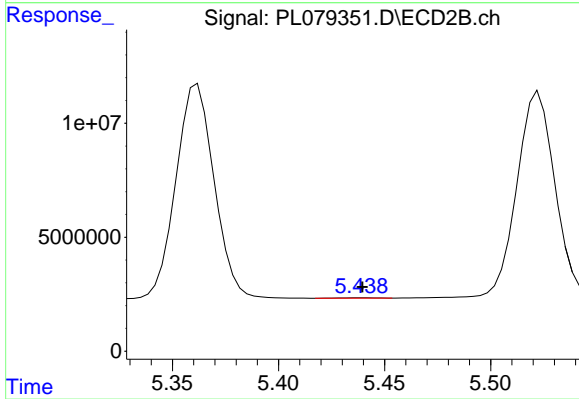
#26 Chlordane-4

R.T.: 4.777 min
 Delta R.T.: -0.001 min
 Response: 138262865
 Conc: 402.91 ng/ml



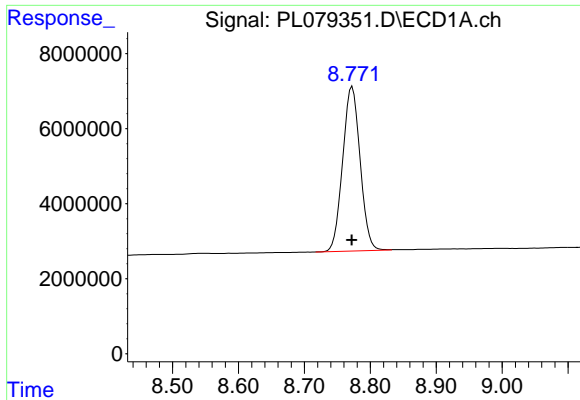
#27 Chlordane-5

R.T.: 0.000 min
 Exp R.T. : 6.646 min
 Response: 0
 Conc: N.D.



#27 Chlordane-5

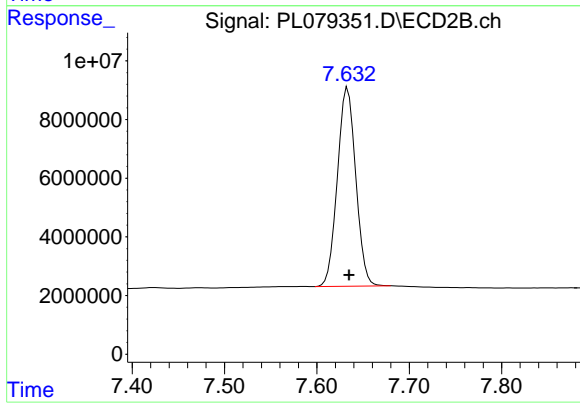
R.T.: 5.439 min
 Delta R.T.: 0.000 min
 Response: 154314
 Conc: 1.81 ng/ml



#28 Decachlorobiphenyl

R.T.: 8.773 min
Delta R.T.: 0.000 min
Response: 80613614
Conc: 48.19 ng/ml

Instrument :
ECD_L
ClientSampleId :



#28 Decachlorobiphenyl

R.T.: 7.633 min
Delta R.T.: -0.001 min
Response: 93790359
Conc: 45.21 ng/ml