

Data Path : Z:\pestpcbsrv\HPCHEM1\ECD\_L\Data\PL112222\  
 Data File : PL079373.D  
 Signal(s) : Signal #1: ECD1A.ch Signal #2: ECD2B.ch  
 Acq On : 22 Nov 2022 16:45  
 Operator : AR\AJ  
 Sample : N5740-01MS  
 Misc :  
 ALS Vial : 24 Sample Multiplier: 1

Instrument :  
 ECD\_L  
 ClientSampleId :

Integration File signal 1: autoint1.e  
 Integration File signal 2: autoint2.e  
 Quant Time: Nov 22 20:52:59 2022  
 Quant Method : Z:\pestpcbsrv\HPCHEM1\ECD\_L\methods\PL111622.M  
 Quant Title : GC Extractables  
 QLast Update : Wed Nov 16 15:31:11 2022  
 Response via : Initial Calibration  
 Integrator: ChemStation

Volume Inj. : 1 µl  
 Signal #1 Phase : ZB-MR2 Signal #2 Phase: ZB-MR1  
 Signal #1 Info : 30M x 0.32mm x0.2 Signal #2 Info : 30M x 0.32mm x0.5µm

Compound	RT#1	RT#2	Resp#1	Resp#2	ng/ml	ng/ml
-----						
System Monitoring Compounds						
1) SA Tetrachlo...	3.319	2.566	39695623	47883392	19.062	18.801
28) SA Decachlor...	8.768	7.631	29045877	32945559	17.364	15.881
Target Compounds						
2) A alpha-BHC	3.780	3.053	161.3E6	190.7E6	51.192	47.159
3) MA gamma-BHC...	4.112	3.373	146.5E6	172.9E6	48.802	48.743
4) MA Heptachlor	4.683	3.700	148.1E6	168.0E6	49.506	46.249
5) MB Aldrin	5.020	3.971	144.5E6	174.3E6	51.629	49.905
6) B beta-BHC	4.327	3.673	61356254	64253443	46.657	45.965
7) B delta-BHC	4.568	3.892	113.7E6	170.8E6	50.207	47.554
8) B Heptachlo...	5.454	4.467	127.6E6	148.7E6	53.999	47.896
9) A Endosulfan I	5.838	4.830	115.4E6	138.2E6	48.065	46.765
10) B gamma-Chl...	5.709	4.715	130.5E6	148.6E6	51.073	47.955
11) B alpha-Chl...	5.786	4.776	127.4E6	145.1E6	49.511	47.549
12) B 4,4'-DDE	5.969	4.971	111.0E6	138.7E6	48.582	48.432
13) MA Dieldrin	6.116	5.091	122.2E6	152.9E6	50.376	49.715
14) MA Endrin	6.347	5.362	101.9E6	134.2E6	46.044	51.383
15) B Endosulfa...	6.576	5.658	99413603	126.2E6	44.073	47.136
16) A 4,4'-DDD	6.494	5.522	90562769	113.9E6	51.565	48.714
17) MA 4,4'-DDT	6.803	5.768	88841988	110.0E6	42.621	45.078
18) B Endrin al...	6.707	5.837	83412825	102.1E6	52.186	48.916
19) B Endosulfa...	6.940	6.059	97865664	120.4E6	48.691	46.140
20) A Methoxychlor	7.288	6.345	47749615	58220410	44.791	44.071
21) B Endrin ke...	7.426	6.555	102.3E6	131.2E6	49.154	46.390
22) Mirex	7.883	6.727	77407358	97688339	48.606	46.095
23) Chlordane-1	0.000	3.553f	0	589520	N.D.	5.706 #
24) Chlordane-2	5.020f	4.081f	144.5E6	1201468	1419.377	11.314 #
25) Chlordane-3	5.709	4.715	130.5E6	148.6E6	338.904	466.337 #
26) Chlordane-4	5.786	4.776	127.4E6	145.1E6	269.205	422.959 #
27) Chlordane-5	0.000	5.458f	0	376944	N.D.	4.421 #

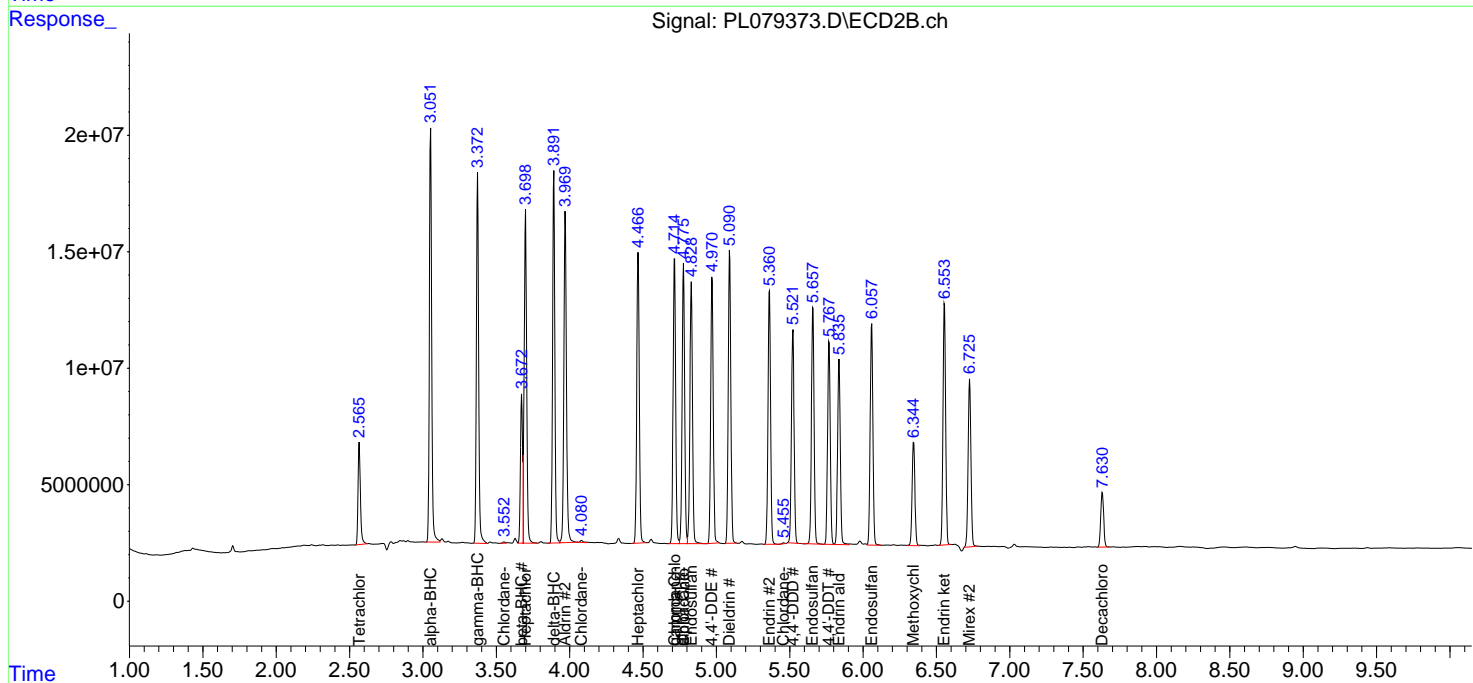
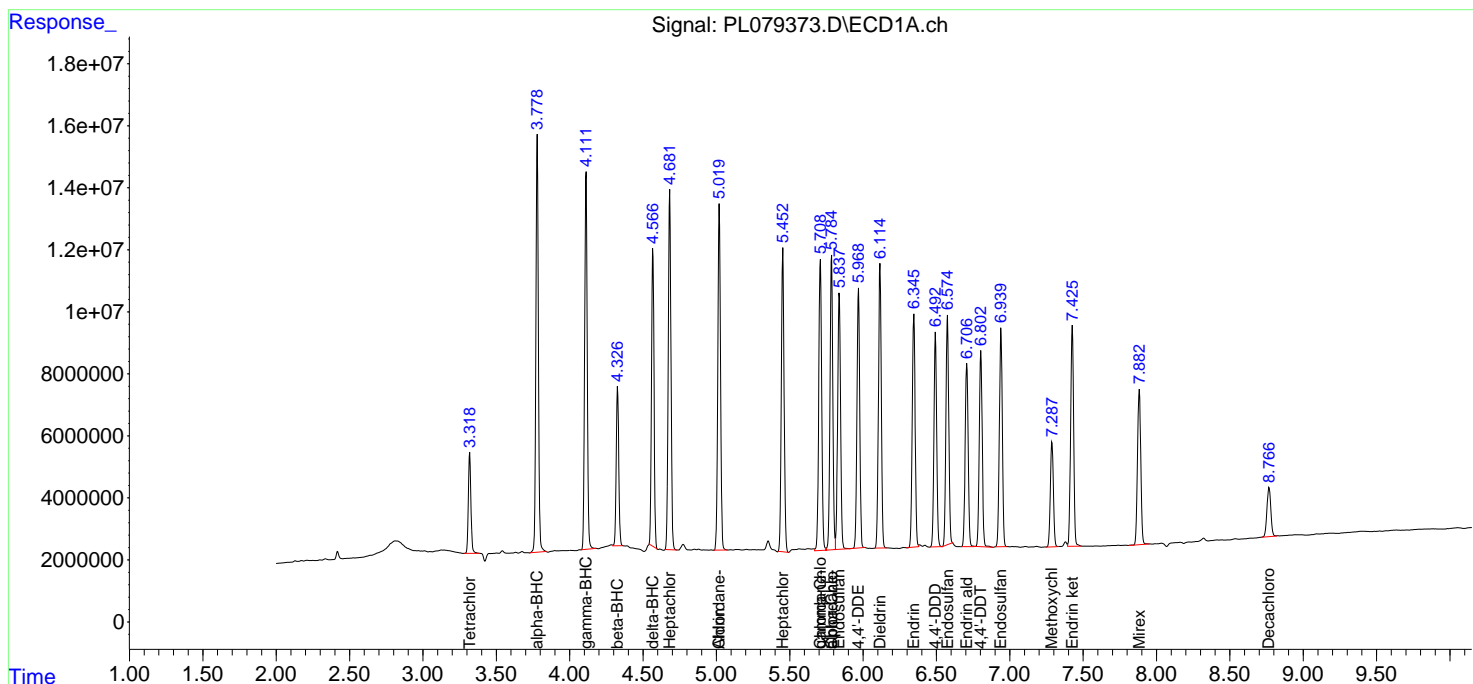
(f)=RT Delta > 1/2 Window (#)=Amounts differ by > 25% (m)=manual int.

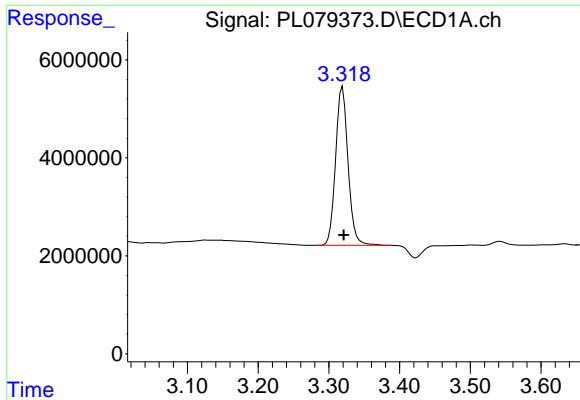
Data Path : Z:\pestpcbsrv\HPCHEM1\ECD\_L\Data\PL112222\  
 Data File : PL079373.D  
 Signal(s) : Signal #1: ECD1A.ch Signal #2: ECD2B.ch  
 Acq On : 22 Nov 2022 16:45  
 Operator : AR\AJ  
 Sample : N5740-01MS  
 Misc :  
 ALS Vial : 24 Sample Multiplier: 1

Instrument :  
 ECD\_L  
 ClientSampleId :

Integration File signal 1: autoint1.e  
 Integration File signal 2: autoint2.e  
 Quant Time: Nov 22 20:52:59 2022  
 Quant Method : Z:\pestpcbsrv\HPCHEM1\ECD\_L\methods\PL111622.M  
 Quant Title : GC Extractables  
 QLast Update : Wed Nov 16 15:31:11 2022  
 Response via : Initial Calibration  
 Integrator: ChemStation

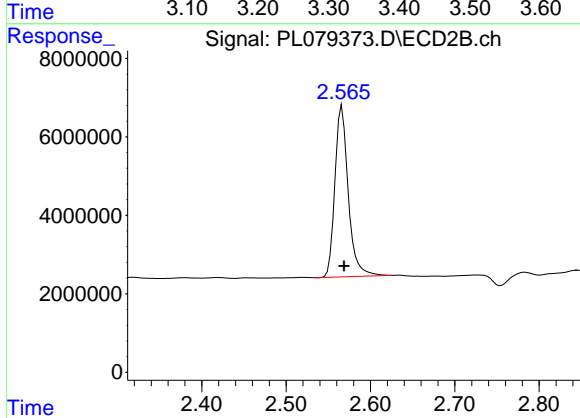
Volume Inj. : 1 µl  
 Signal #1 Phase : ZB-MR2 Signal #2 Phase: ZB-MR1  
 Signal #1 Info : 30M x 0.32mm x0.2 Signal #2 Info : 30M x 0.32mm x0.5µm



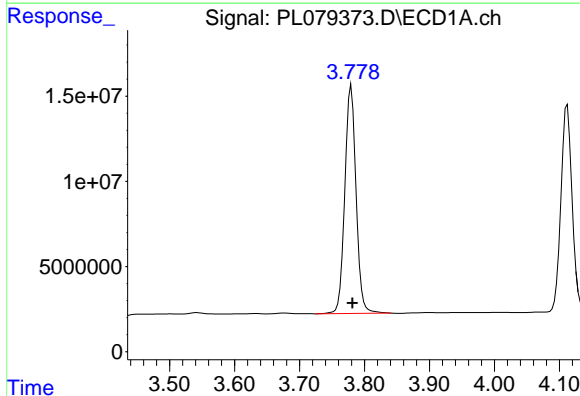


#1 Tetrachloro-m-xylene  
 R.T.: 3.319 min  
 Delta R.T.: -0.002 min  
 Response: 39695623  
 Conc: 19.06 ng/ml

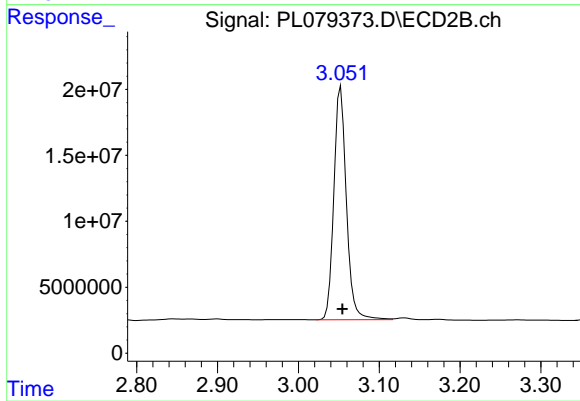
Instrument :  
 ECD\_L  
 ClientSampleId :



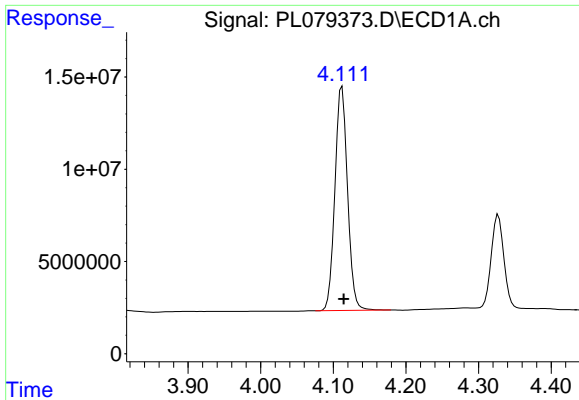
#1 Tetrachloro-m-xylene  
 R.T.: 2.566 min  
 Delta R.T.: -0.002 min  
 Response: 47883392  
 Conc: 18.80 ng/ml



#2 alpha-BHC  
 R.T.: 3.780 min  
 Delta R.T.: -0.002 min  
 Response: 161311979  
 Conc: 51.19 ng/ml

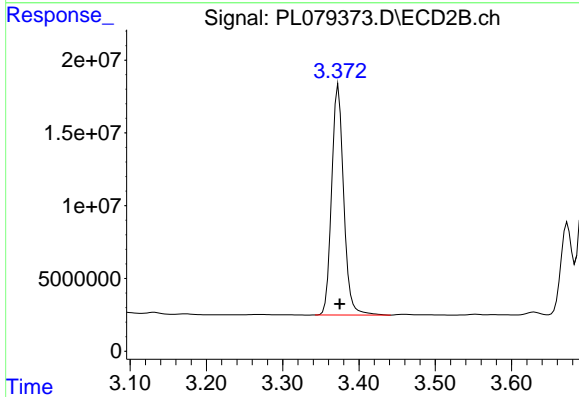


#2 alpha-BHC  
 R.T.: 3.053 min  
 Delta R.T.: -0.002 min  
 Response: 190696550  
 Conc: 47.16 ng/ml

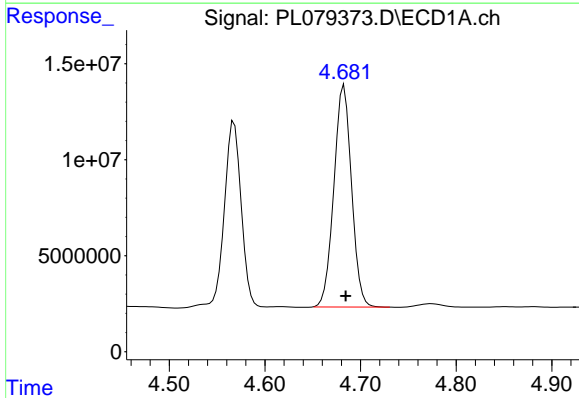


#3 gamma-BHC (Lindane)  
 R.T.: 4.112 min  
 Delta R.T.: -0.002 min  
 Response: 146481434  
 Conc: 48.80 ng/ml

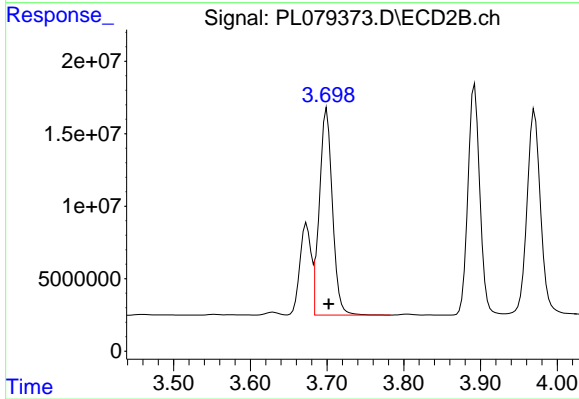
Instrument :  
 ECD\_L  
 ClientSampleId :



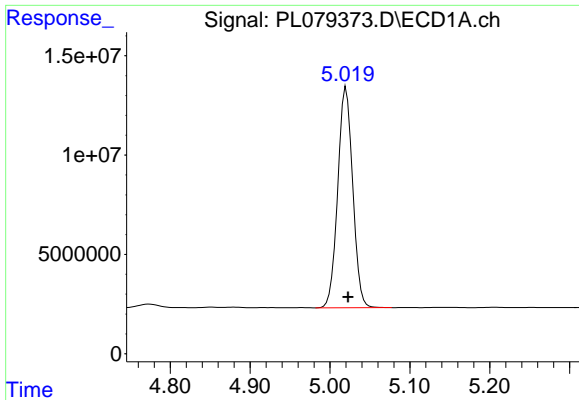
#3 gamma-BHC (Lindane)  
 R.T.: 3.373 min  
 Delta R.T.: -0.002 min  
 Response: 172938116  
 Conc: 48.74 ng/ml



#4 Heptachlor  
 R.T.: 4.683 min  
 Delta R.T.: -0.002 min  
 Response: 148105420  
 Conc: 49.51 ng/ml

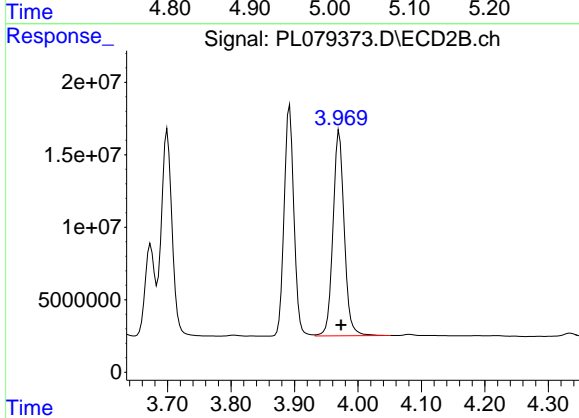


#4 Heptachlor  
 R.T.: 3.700 min  
 Delta R.T.: -0.003 min  
 Response: 168016111  
 Conc: 46.25 ng/ml

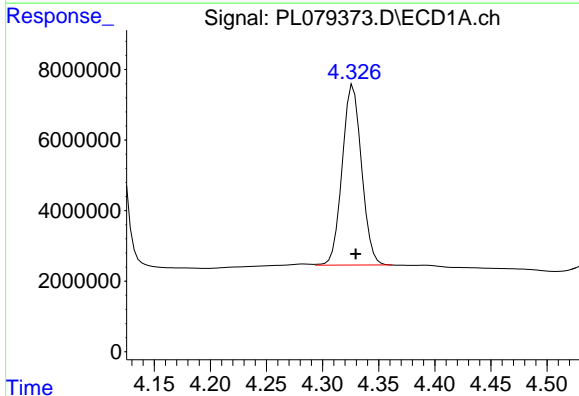


#5 Aldrin  
 R.T.: 5.020 min  
 Delta R.T.: -0.002 min  
 Response: 144472261  
 Conc: 51.63 ng/ml

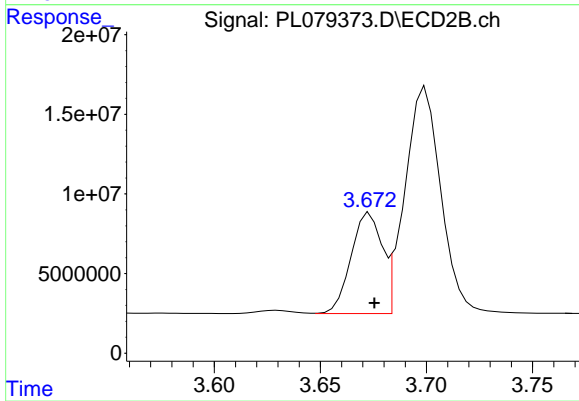
Instrument :  
 ECD\_L  
 ClientSampleId :



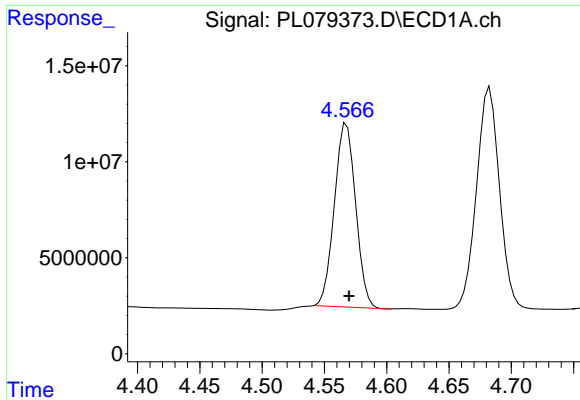
#5 Aldrin  
 R.T.: 3.971 min  
 Delta R.T.: -0.003 min  
 Response: 174316816  
 Conc: 49.90 ng/ml



#6 beta-BHC  
 R.T.: 4.327 min  
 Delta R.T.: -0.002 min  
 Response: 61356254  
 Conc: 46.66 ng/ml



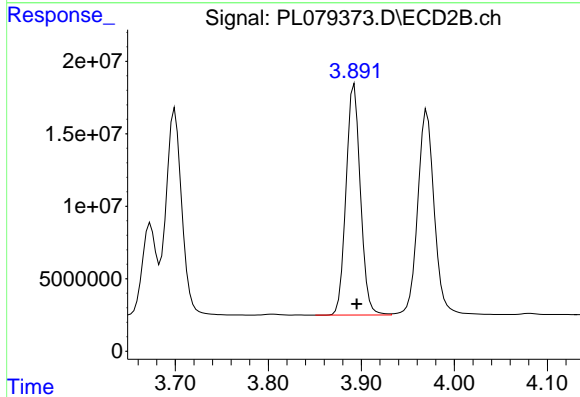
#6 beta-BHC  
 R.T.: 3.673 min  
 Delta R.T.: -0.002 min  
 Response: 64253443  
 Conc: 45.97 ng/ml



#7 delta-BHC

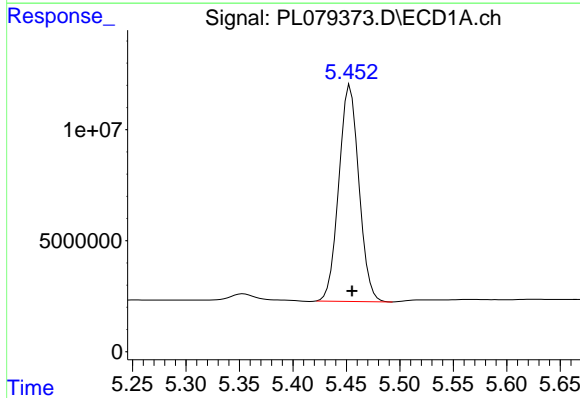
R.T.: 4.568 min  
 Delta R.T.: -0.002 min  
 Response: 113696393  
 Conc: 50.21 ng/ml

Instrument :  
 ECD\_L  
 ClientSampleId :



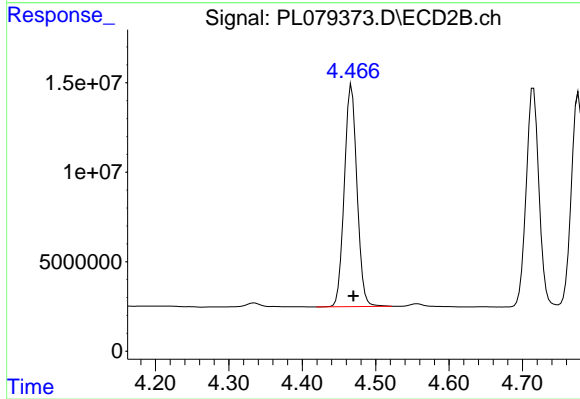
#7 delta-BHC

R.T.: 3.892 min  
 Delta R.T.: -0.002 min  
 Response: 170754291  
 Conc: 47.55 ng/ml



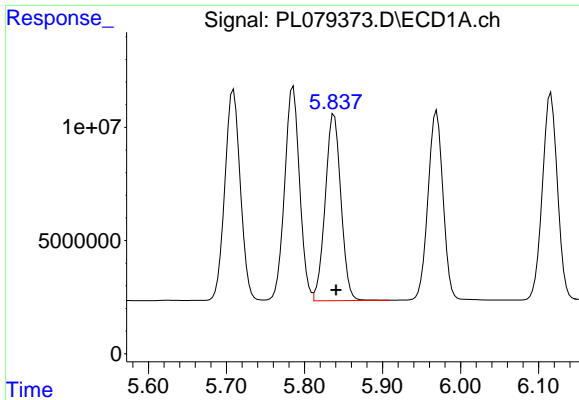
#8 Heptachlor epoxide

R.T.: 5.454 min  
 Delta R.T.: -0.002 min  
 Response: 127624626  
 Conc: 54.00 ng/ml



#8 Heptachlor epoxide

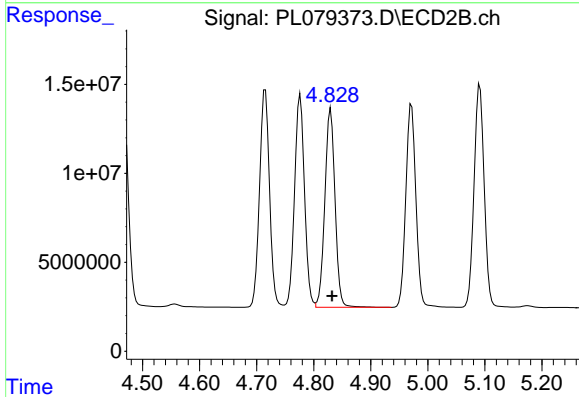
R.T.: 4.467 min  
 Delta R.T.: -0.002 min  
 Response: 148711835  
 Conc: 47.90 ng/ml



#9 Endosulfan I

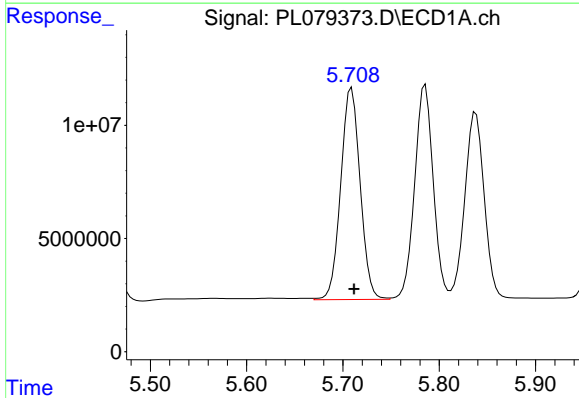
R.T.: 5.838 min  
 Delta R.T.: -0.003 min  
 Response: 115427867  
 Conc: 48.06 ng/ml

Instrument :  
 ECD\_L  
 ClientSampleId :



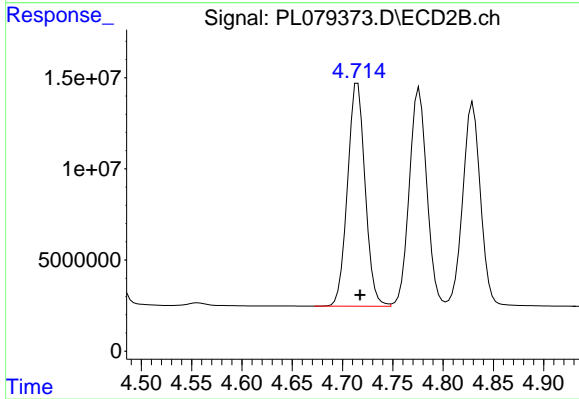
#9 Endosulfan I

R.T.: 4.830 min  
 Delta R.T.: -0.003 min  
 Response: 138206975  
 Conc: 46.77 ng/ml



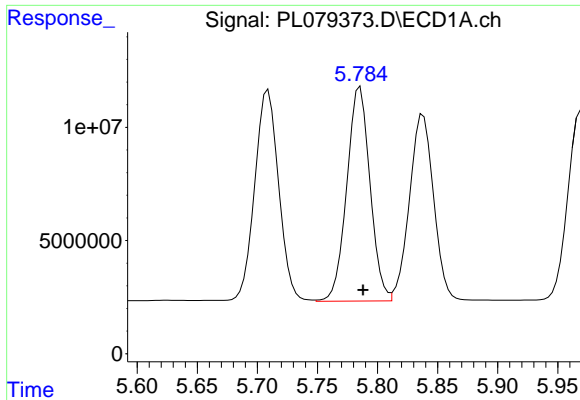
#10 gamma-Chlordane

R.T.: 5.709 min  
 Delta R.T.: -0.003 min  
 Response: 130546593  
 Conc: 51.07 ng/ml



#10 gamma-Chlordane

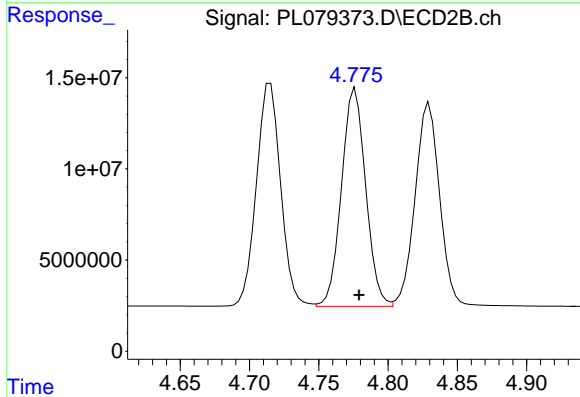
R.T.: 4.715 min  
 Delta R.T.: -0.002 min  
 Response: 148582176  
 Conc: 47.95 ng/ml



#11 alpha-Chlordane

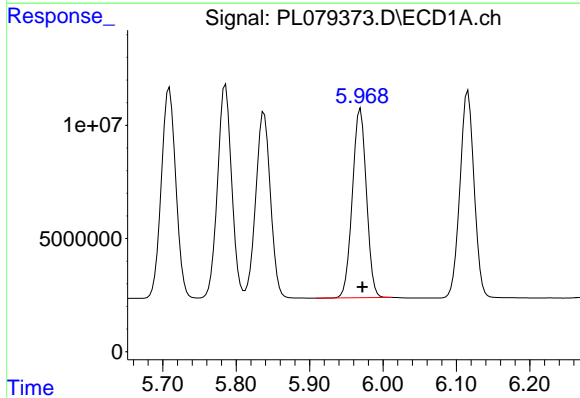
R.T.: 5.786 min  
 Delta R.T.: -0.002 min  
 Response: 127377696  
 Conc: 49.51 ng/ml

Instrument :  
 ECD\_L  
 ClientSampleId :



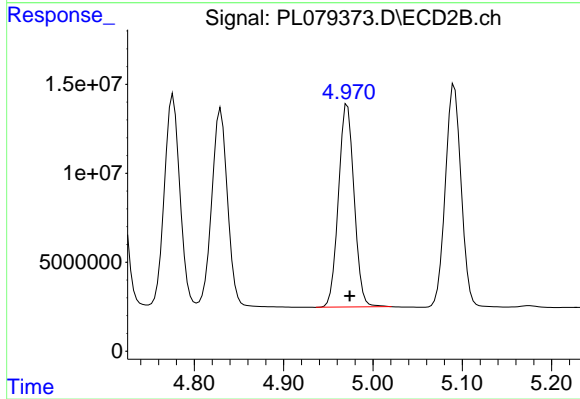
#11 alpha-Chlordane

R.T.: 4.776 min  
 Delta R.T.: -0.003 min  
 Response: 145143842  
 Conc: 47.55 ng/ml



#12 4,4'-DDE

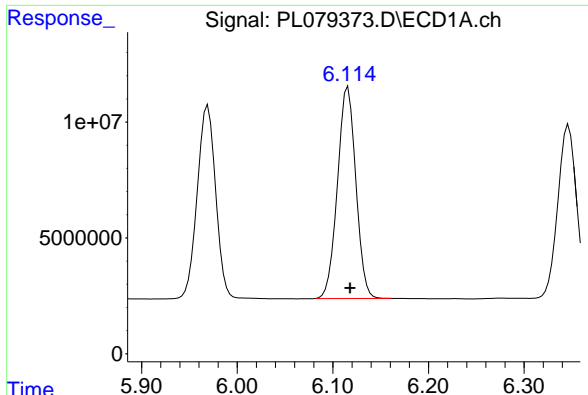
R.T.: 5.969 min  
 Delta R.T.: -0.003 min  
 Response: 110992038  
 Conc: 48.58 ng/ml



#12 4,4'-DDE

R.T.: 4.971 min  
 Delta R.T.: -0.003 min  
 Response: 138714591  
 Conc: 48.43 ng/ml

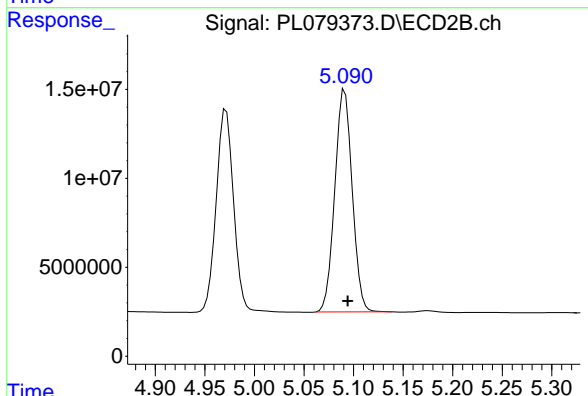




#13 Dieldrin

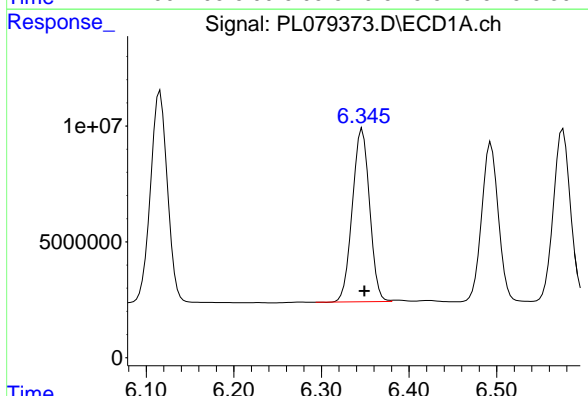
R.T.: 6.116 min  
 Delta R.T.: -0.002 min  
 Response: 122205102  
 Conc: 50.38 ng/ml

Instrument :  
 ECD\_L  
 ClientSampleId :



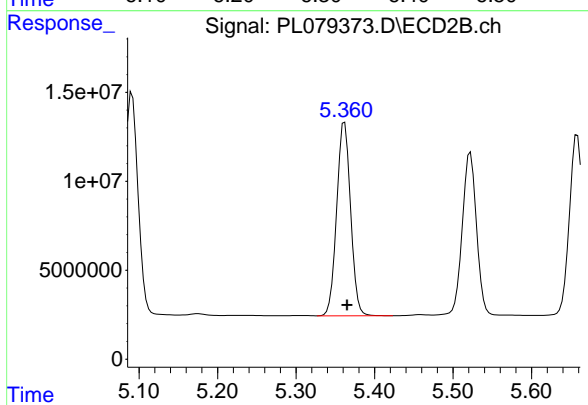
#13 Dieldrin

R.T.: 5.091 min  
 Delta R.T.: -0.003 min  
 Response: 152879399  
 Conc: 49.72 ng/ml



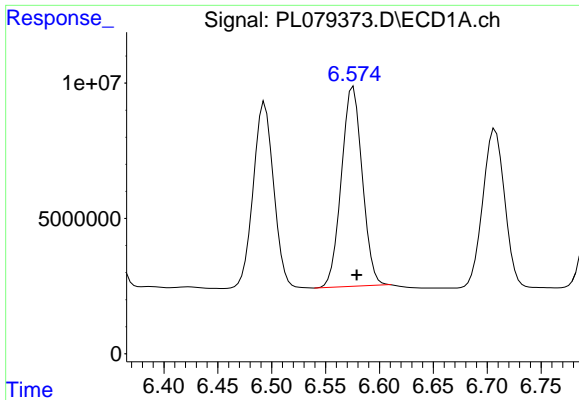
#14 Endrin

R.T.: 6.347 min  
 Delta R.T.: -0.002 min  
 Response: 101887422  
 Conc: 46.04 ng/ml



#14 Endrin

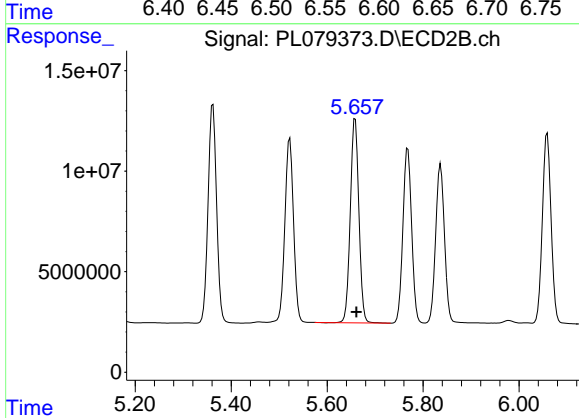
R.T.: 5.362 min  
 Delta R.T.: -0.003 min  
 Response: 134201474  
 Conc: 51.38 ng/ml



#15 Endosulfan II

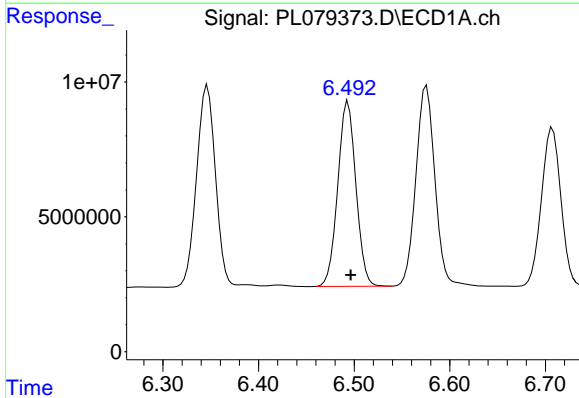
R.T.: 6.576 min  
 Delta R.T.: -0.003 min  
 Response: 99413603  
 Conc: 44.07 ng/ml

Instrument :  
 ECD\_L  
 ClientSampleId :



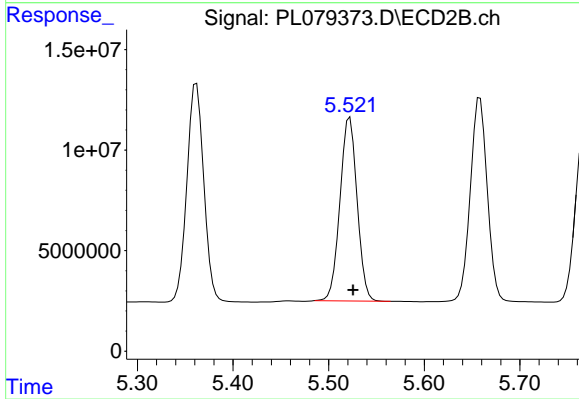
#15 Endosulfan II

R.T.: 5.658 min  
 Delta R.T.: -0.003 min  
 Response: 126172316  
 Conc: 47.14 ng/ml



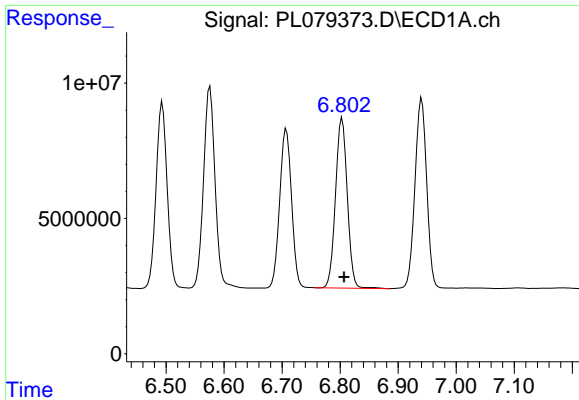
#16 4,4'-DDD

R.T.: 6.494 min  
 Delta R.T.: -0.003 min  
 Response: 90562769  
 Conc: 51.57 ng/ml



#16 4,4'-DDD

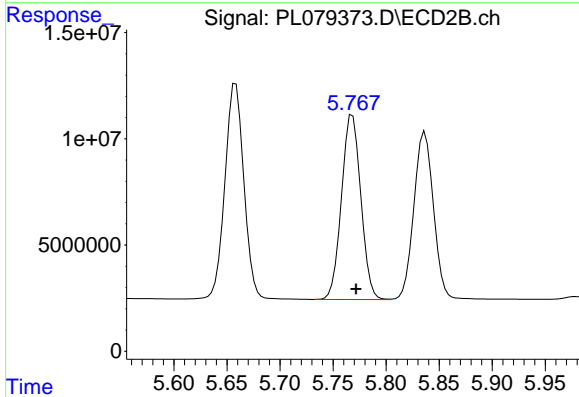
R.T.: 5.522 min  
 Delta R.T.: -0.003 min  
 Response: 113918141  
 Conc: 48.71 ng/ml



#17 4,4'-DDT

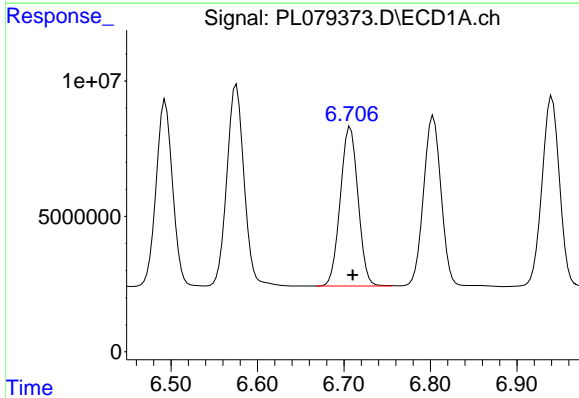
R.T.: 6.803 min  
 Delta R.T.: -0.003 min  
 Response: 88841988  
 Conc: 42.62 ng/ml

Instrument :  
 ECD\_L  
 ClientSampleId :



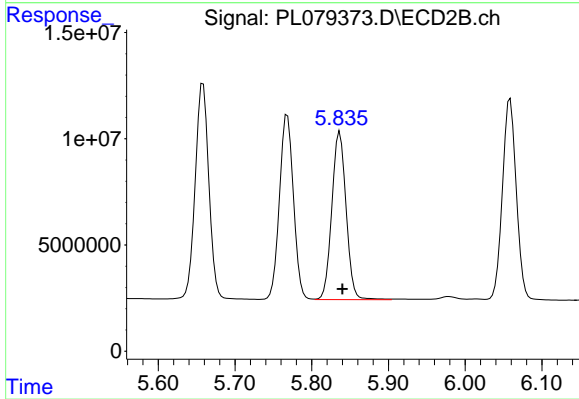
#17 4,4'-DDT

R.T.: 5.768 min  
 Delta R.T.: -0.003 min  
 Response: 110025943  
 Conc: 45.08 ng/ml



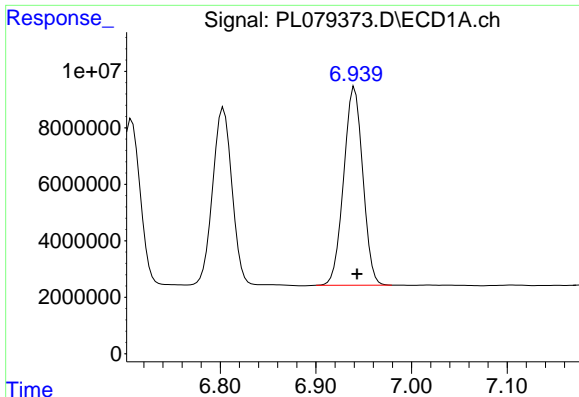
#18 Endrin aldehyde

R.T.: 6.707 min  
 Delta R.T.: -0.003 min  
 Response: 83412825  
 Conc: 52.19 ng/ml



#18 Endrin aldehyde

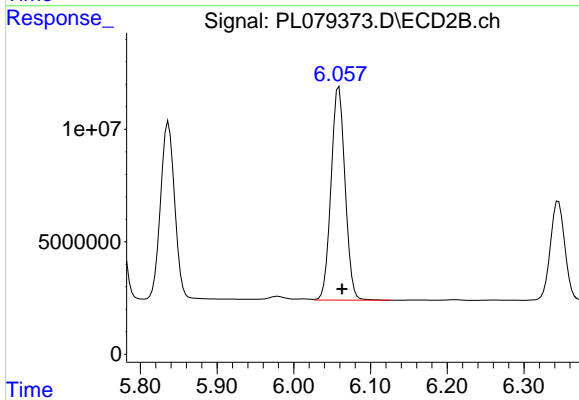
R.T.: 5.837 min  
 Delta R.T.: -0.003 min  
 Response: 102100586  
 Conc: 48.92 ng/ml



#19 Endosulfan Sulfate

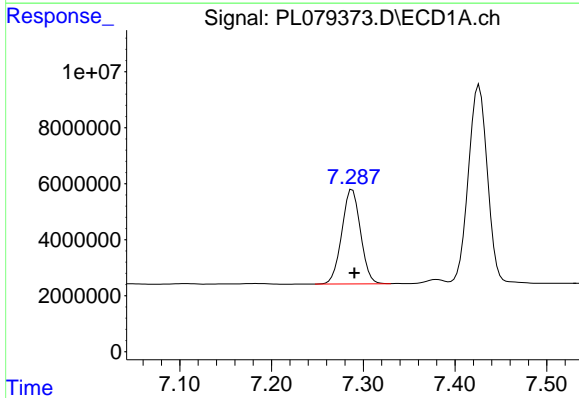
R.T.: 6.940 min  
 Delta R.T.: -0.003 min  
 Response: 97865664  
 Conc: 48.69 ng/ml

Instrument :  
 ECD\_L  
 ClientSampleId :



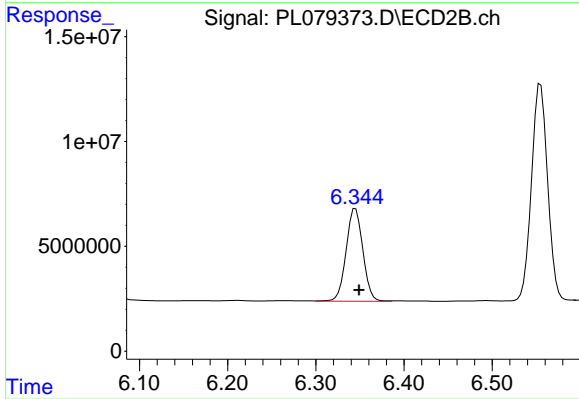
#19 Endosulfan Sulfate

R.T.: 6.059 min  
 Delta R.T.: -0.004 min  
 Response: 120385362  
 Conc: 46.14 ng/ml



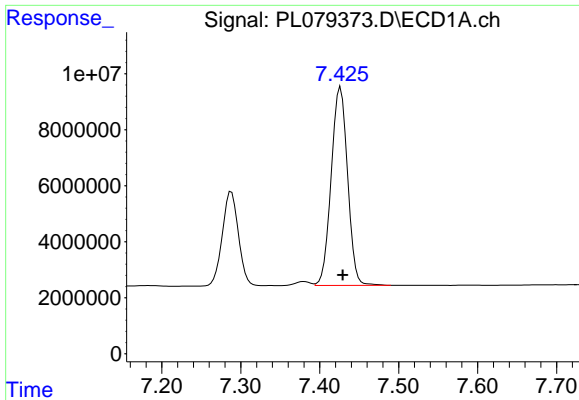
#20 Methoxychlor

R.T.: 7.288 min  
 Delta R.T.: -0.002 min  
 Response: 47749615  
 Conc: 44.79 ng/ml



#20 Methoxychlor

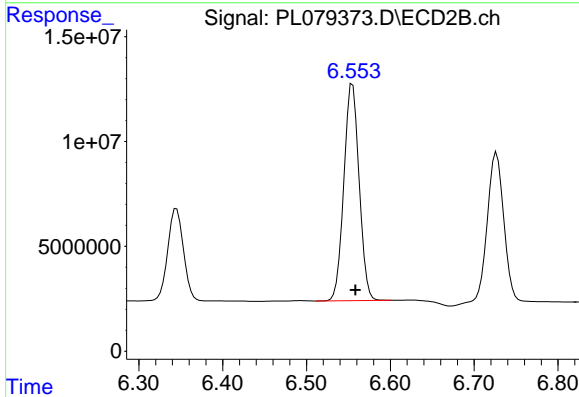
R.T.: 6.345 min  
 Delta R.T.: -0.004 min  
 Response: 58220410  
 Conc: 44.07 ng/ml



#21 Endrin ketone

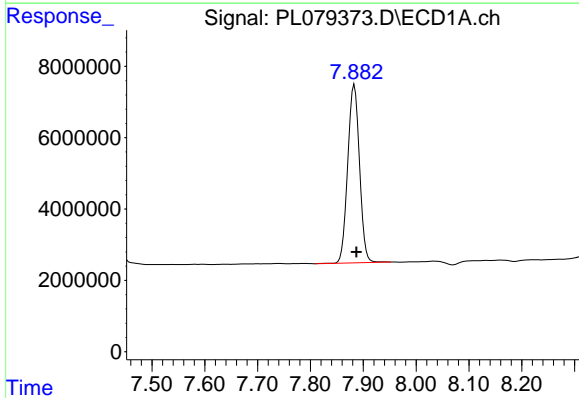
R.T.: 7.426 min  
 Delta R.T.: -0.003 min  
 Response: 102340963  
 Conc: 49.15 ng/ml

Instrument :  
 ECD\_L  
 ClientSampleId :



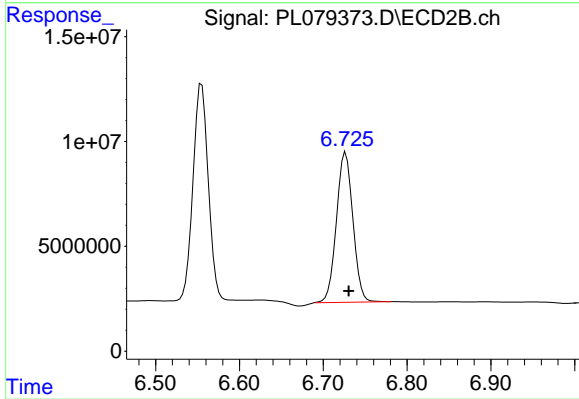
#21 Endrin ketone

R.T.: 6.555 min  
 Delta R.T.: -0.003 min  
 Response: 131217326  
 Conc: 46.39 ng/ml



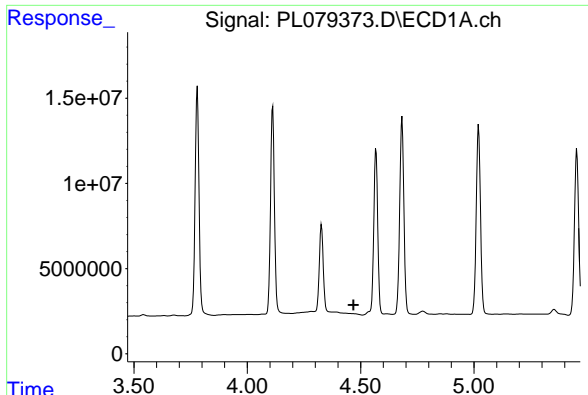
#22 Mirex

R.T.: 7.883 min  
 Delta R.T.: -0.004 min  
 Response: 77407358  
 Conc: 48.61 ng/ml



#22 Mirex

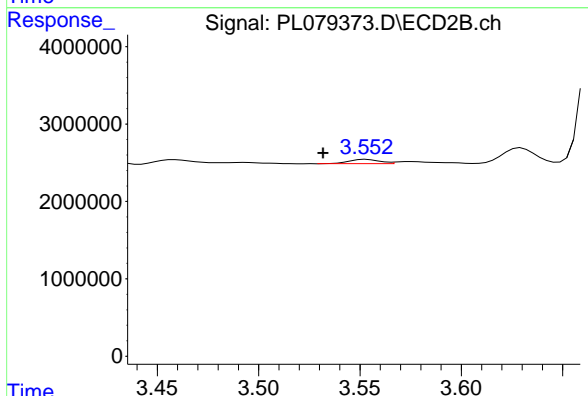
R.T.: 6.727 min  
 Delta R.T.: -0.004 min  
 Response: 97688339  
 Conc: 46.09 ng/ml



#23 Chlordane-1

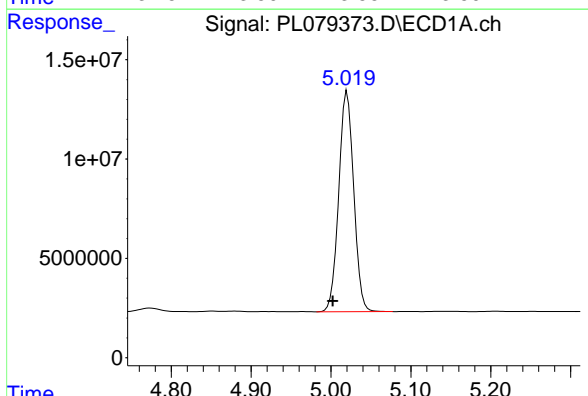
R.T.: 0.000 min  
 Exp R.T.: 4.469 min  
 Response: 0  
 Conc: N.D.

Instrument :  
 ECD\_L  
 ClientSampleId :



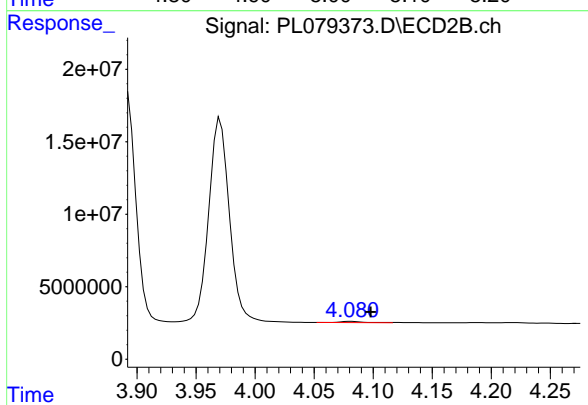
#23 Chlordane-1

R.T.: 3.553 min  
 Delta R.T.: 0.022 min  
 Response: 589520  
 Conc: 5.71 ng/ml



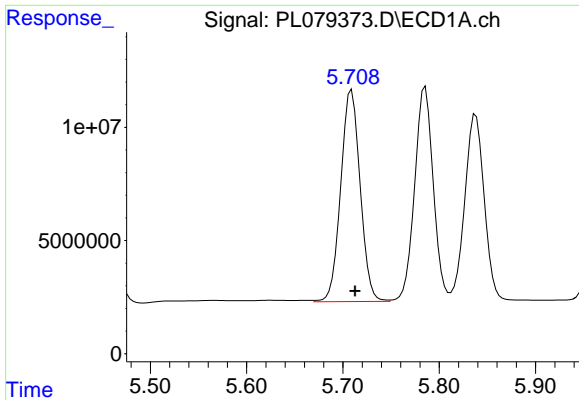
#24 Chlordane-2

R.T.: 5.020 min  
 Delta R.T.: 0.018 min  
 Response: 144472261  
 Conc: 1419.38 ng/ml



#24 Chlordane-2

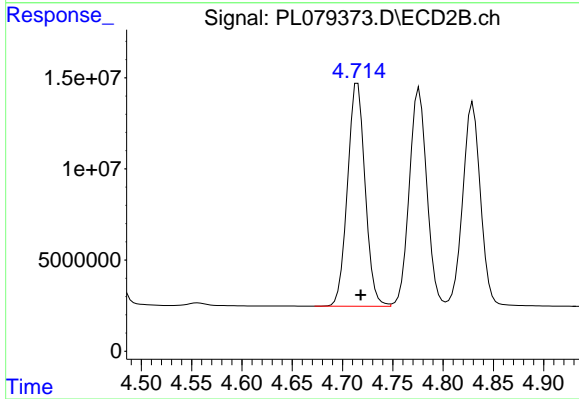
R.T.: 4.081 min  
 Delta R.T.: -0.017 min  
 Response: 1201468  
 Conc: 11.31 ng/ml



#25 Chlordane-3

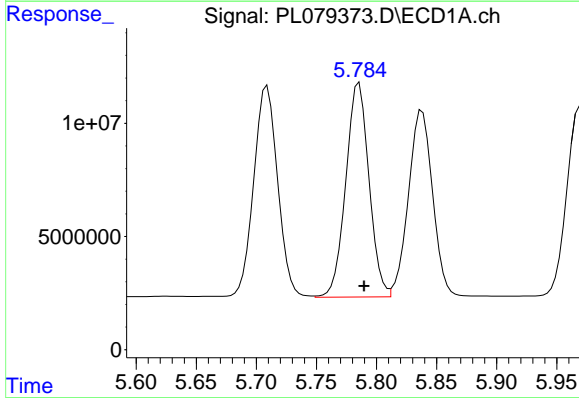
R.T.: 5.709 min  
 Delta R.T.: -0.003 min  
 Response: 130546593  
 Conc: 338.90 ng/ml

Instrument :  
 ECD\_L  
 ClientSampleId :



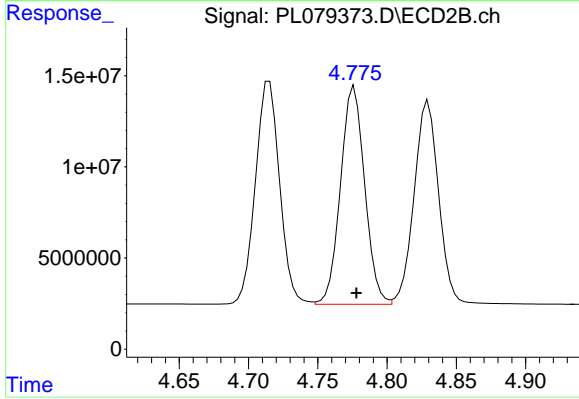
#25 Chlordane-3

R.T.: 4.715 min  
 Delta R.T.: -0.003 min  
 Response: 148582176  
 Conc: 466.34 ng/ml



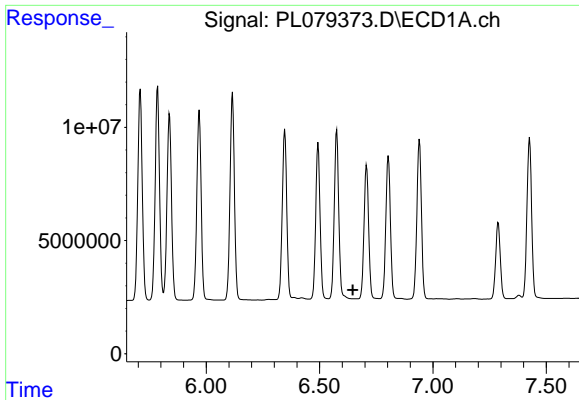
#26 Chlordane-4

R.T.: 5.786 min  
 Delta R.T.: -0.004 min  
 Response: 127377696  
 Conc: 269.20 ng/ml



#26 Chlordane-4

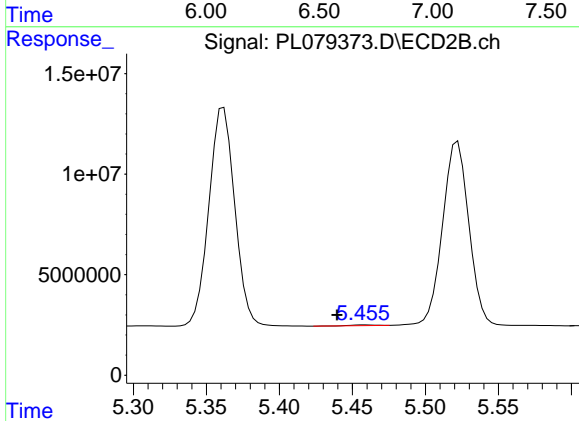
R.T.: 4.776 min  
 Delta R.T.: -0.001 min  
 Response: 145143842  
 Conc: 422.96 ng/ml



#27 Chlordane-5

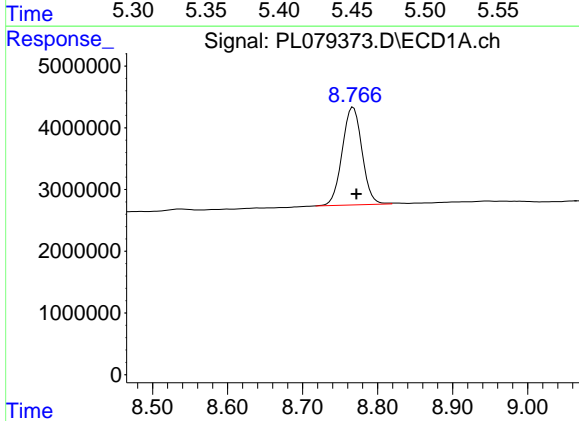
R.T.: 0.000 min  
 Exp R.T.: 6.646 min  
 Response: 0  
 Conc: N.D.

Instrument :  
 ECD\_L  
 ClientSampleId :



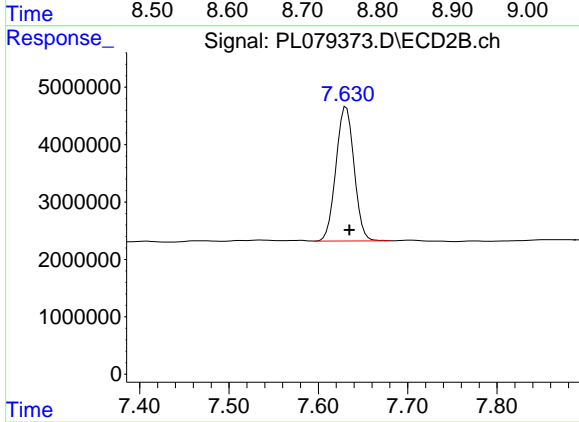
#27 Chlordane-5

R.T.: 5.458 min  
 Delta R.T.: 0.019 min  
 Response: 376944  
 Conc: 4.42 ng/ml



#28 Decachlorobiphenyl

R.T.: 8.768 min  
 Delta R.T.: -0.004 min  
 Response: 29045877  
 Conc: 17.36 ng/ml



#28 Decachlorobiphenyl

R.T.: 7.631 min  
 Delta R.T.: -0.003 min  
 Response: 32945559  
 Conc: 15.88 ng/ml