

Data Path : Z:\pestpcbsrv\HPCHEM1\ECD_L\Data\PL112320\
 Data File : PL063150.D
 Signal(s) : Signal #1: ECD1A.ch Signal #2: ECD2B.ch
 Acq On : 23 Nov 2020 18:49
 Operator : DD\AJ
 Sample : PSTDICC050
 Misc :
 ALS Vial : 7 Sample Multiplier: 1

Instrument :
 ECD_L
 ClientSampleId :
 PSTDICC050

Integration File signal 1: autoint1.e
 Integration File signal 2: autoint2.e
 Quant Time: Nov 24 01:42:49 2020
 Quant Method : Z:\pestpcbsrv\HPCHEM1\ECD_L\methods\PL112320.M
 Quant Title : GC Extractables
 QLast Update : Tue Nov 24 01:41:18 2020
 Response via : Initial Calibration
 Integrator: ChemStation

Volume Inj. : 1 µl
 Signal #1 Phase : ZB-MR2 Signal #2 Phase: ZB-MR1
 Signal #1 Info : 30M x 0.32mm x0.2 Signal #2 Info : 30M x 0.32mm x0.5µm

Compound	RT#1	RT#2	Resp#1	Resp#2	ng/ml	ng/ml
System Monitoring Compounds						
1) SA Tetrachlo...	3.410	3.950	85673257	166.7E6	50.000	50.000
28) SA Decachlor...	8.126	8.990	91269125	121.6E6	50.000	50.000
Target Compounds						
2) A alpha-BHC	3.842	4.337	125.8E6	252.2E6	50.000	50.000
3) MA gamma-BHC...	4.122	4.620	114.7E6	236.0E6	50.000	50.000
4) MA Heptachlor	4.418	5.125	106.7E6	214.3E6	50.000	50.000
5) MB Aldrin	4.662	5.428	95274139	202.8E6	50.000	50.000
6) B beta-BHC	4.371	4.791	47093320	101.8E6	50.000	50.000
7) B delta-BHC	4.572	5.006	109.4E6	189.6E6	50.000	50.000
8) B Heptachlo...	5.101	5.813	91668513	174.3E6	50.000	50.000
9) A Endosulfan I	5.436	6.169	85825623	170.9E6	50.000	50.000
10) B gamma-Chl...	5.327	6.047	91672301	182.5E6	50.000	50.000
11) B alpha-Chl...	5.384	6.120	91711841	183.7E6	50.000	50.000
12) B 4,4'-DDE	5.550	6.279	84873028	179.2E6	50.000	50.000
13) MA Dieldrin	5.677	6.425	90173624	175.3E6	50.000	50.000
14) MA Endrin	5.932	6.642	85153514	152.3E6	50.000	50.000
15) B Endosulfa...	6.205	6.852	87746417	157.8E6	50.000	50.000
16) A 4,4'-DDD	6.062	6.768	73822768	136.8E6	50.000	50.000
17) MA 4,4'-DDT	6.300	7.066	71534397	132.2E6	50.000	50.000
18) B Endrin al...	6.372	6.977	73133000	126.3E6	50.000	50.000
19) B Endosulfa...	6.584	7.199	83202438	137.7E6	50.000	50.000
20) A Methoxychlor	6.844	7.526	44393409	70684483	50.000	50.000
21) B Endrin ke...	7.070	7.669	95713527	140.7E6	50.000	50.000
22) Mirex	7.256	8.122	74191669	97621498	50.000	50.000
23) Chlordane-1	4.295f	0.000	450038	0	9.021	N.D. #
24) Chlordane-2	0.000	5.428f	0	202.8E6	N.D.	1723.971 #
25) Chlordane-3	5.327	6.047	91672301	182.5E6	583.904	411.451 #
26) Chlordane-4	5.384	6.120	91711841	183.7E6	697.651	342.491 #
27) Chlordane-5	6.205	0.000	87746417	0	1507.133	N.D. #

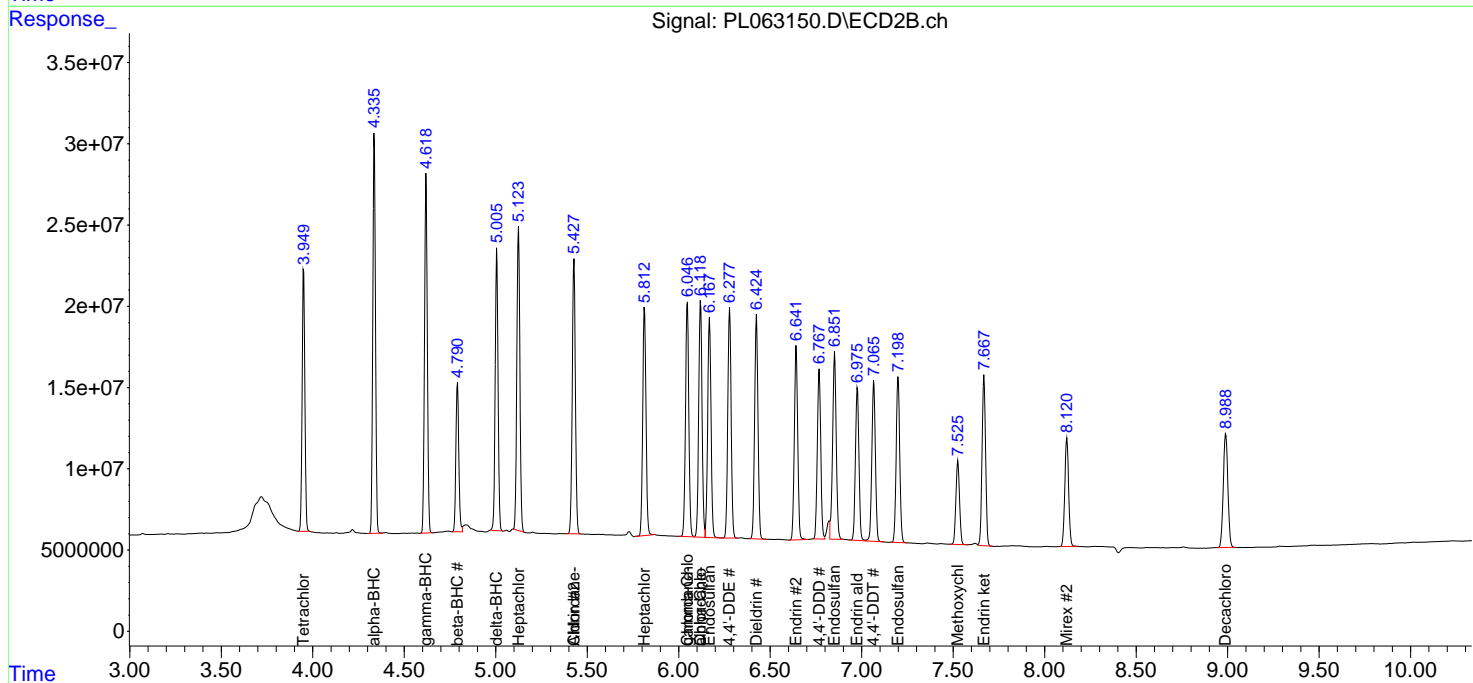
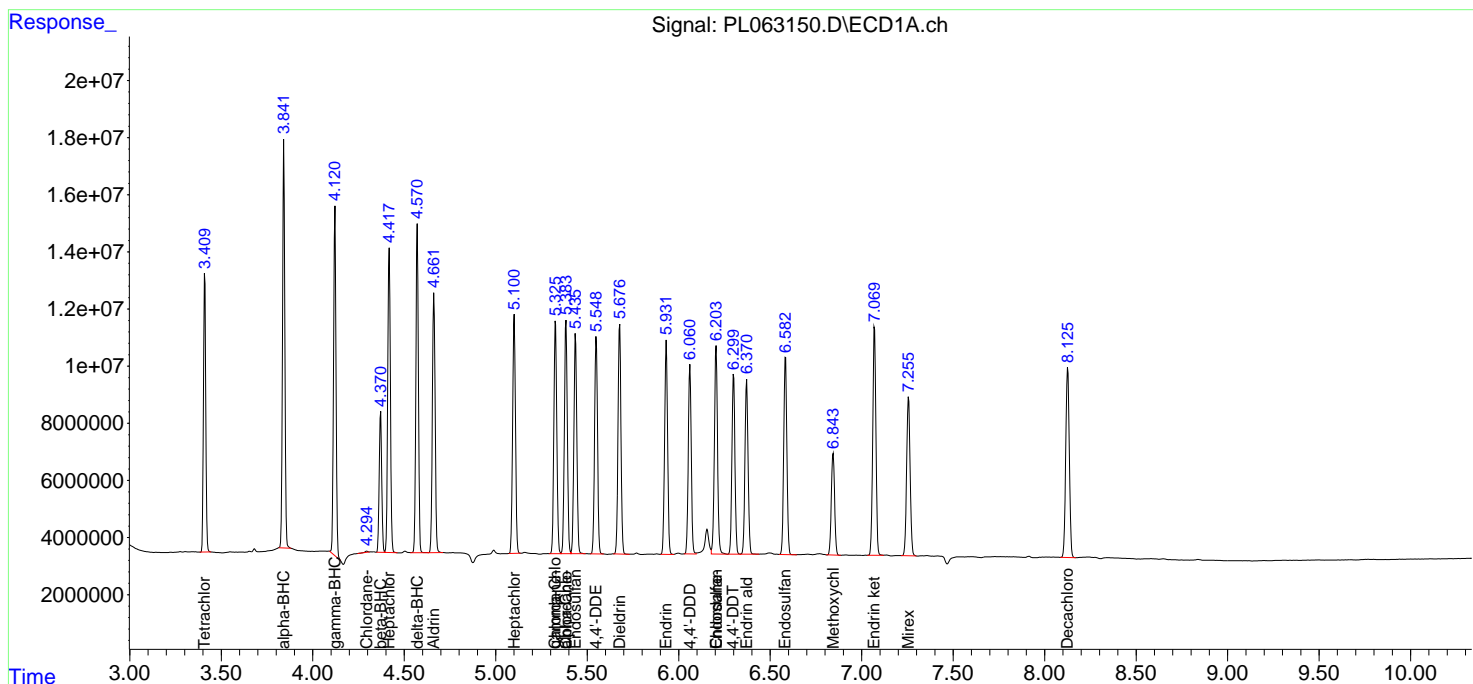
(f)=RT Delta > 1/2 Window (#)=Amounts differ by > 25% (m)=manual int.

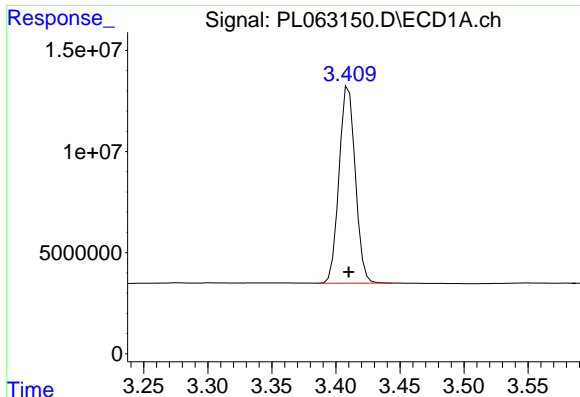
Data Path : Z:\pestpcbsrv\HPCHEM1\ECD_L\Data\PL112320\
 Data File : PL063150.D
 Signal(s) : Signal #1: ECD1A.ch Signal #2: ECD2B.ch
 Acq On : 23 Nov 2020 18:49
 Operator : DD\AJ
 Sample : PSTDICC050
 Misc :
 ALS Vial : 7 Sample Multiplier: 1

Instrument :
 ECD_L
 ClientSampled :
 PSTDICC050

Integration File signal 1: autoint1.e
 Integration File signal 2: autoint2.e
 Quant Time: Nov 24 01:42:49 2020
 Quant Method : Z:\pestpcbsrv\HPCHEM1\ECD_L\methods\PL112320.M
 Quant Title : GC Extractables
 QLast Update : Tue Nov 24 01:41:18 2020
 Response via : Initial Calibration
 Integrator: ChemStation

Volume Inj. : 1 µl
 Signal #1 Phase : ZB-MR2 Signal #2 Phase: ZB-MR1
 Signal #1 Info : 30M x 0.32mm x0.2 Signal #2 Info : 30M x 0.32mm x0.5µm

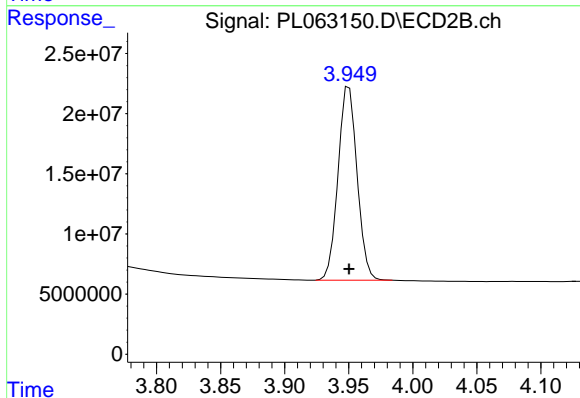




#1 Tetrachloro-m-xylene

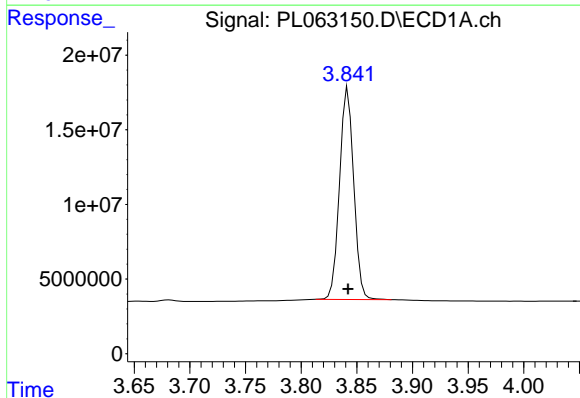
R.T.: 3.410 min
Delta R.T.: 0.000 min
Response: 85673257
Conc: 50.00 ng/ml

Instrument :
ECD_L
ClientSampleId :
PSTDICC050



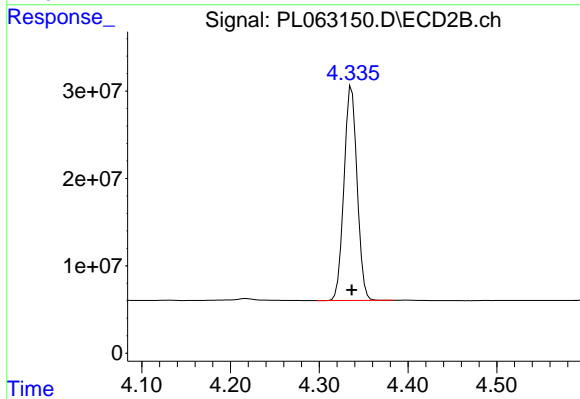
#1 Tetrachloro-m-xylene

R.T.: 3.950 min
Delta R.T.: 0.000 min
Response: 166660811
Conc: 50.00 ng/ml



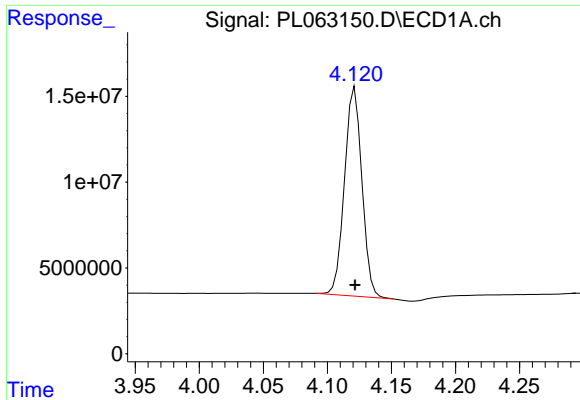
#2 alpha-BHC

R.T.: 3.842 min
Delta R.T.: 0.000 min
Response: 125840500
Conc: 50.00 ng/ml



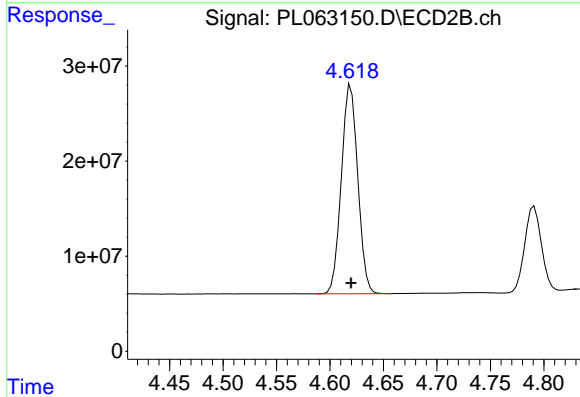
#2 alpha-BHC

R.T.: 4.337 min
Delta R.T.: 0.000 min
Response: 252174762
Conc: 50.00 ng/ml

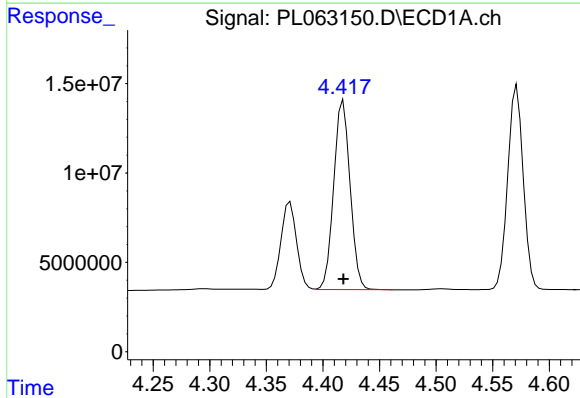


#3 gamma-BHC (Lindane)
 R.T.: 4.122 min
 Delta R.T.: 0.000 min
 Response: 114650868
 Conc: 50.00 ng/ml

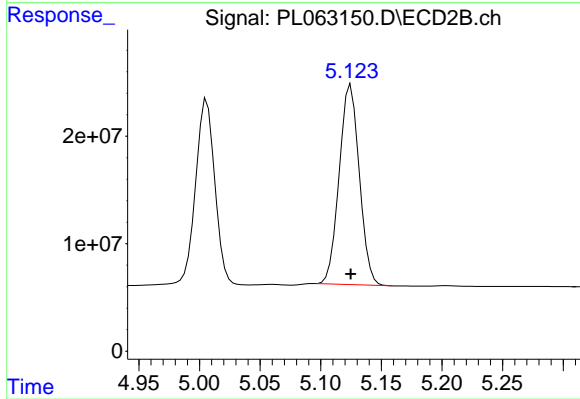
Instrument :
 ECD_L
 ClientSampleId :
 PSTDICC050



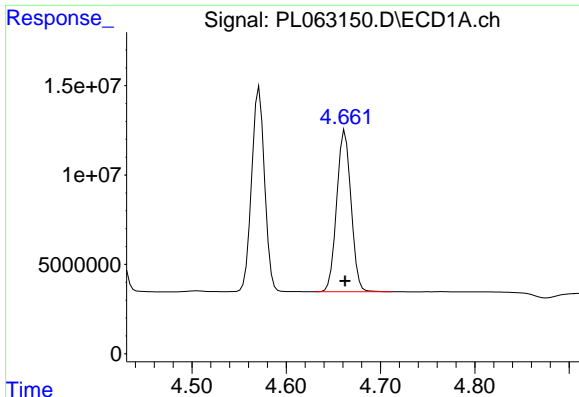
#3 gamma-BHC (Lindane)
 R.T.: 4.620 min
 Delta R.T.: 0.000 min
 Response: 235970396
 Conc: 50.00 ng/ml



#4 Heptachlor
 R.T.: 4.418 min
 Delta R.T.: 0.000 min
 Response: 106718304
 Conc: 50.00 ng/ml

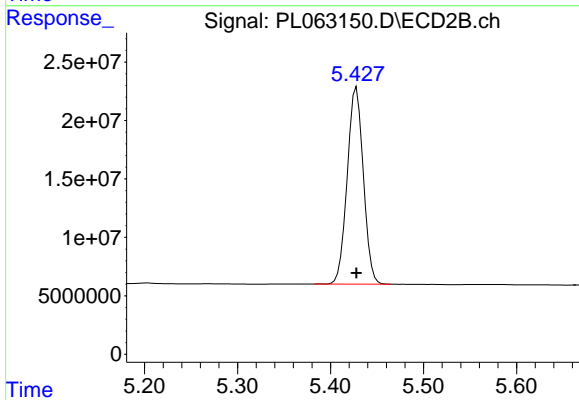


#4 Heptachlor
 R.T.: 5.125 min
 Delta R.T.: 0.000 min
 Response: 214308687
 Conc: 50.00 ng/ml

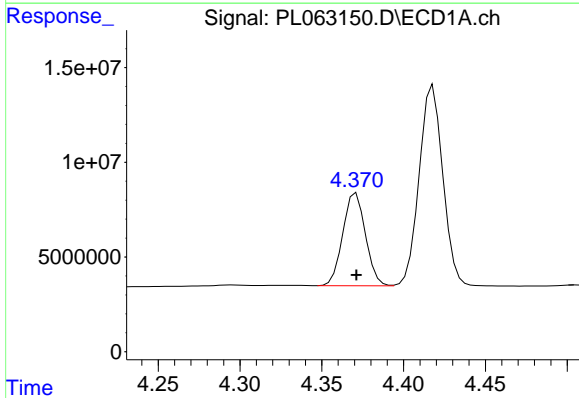


#5 Aldrin
 R.T.: 4.662 min
 Delta R.T.: 0.000 min
 Response: 95274139
 Conc: 50.00 ng/ml

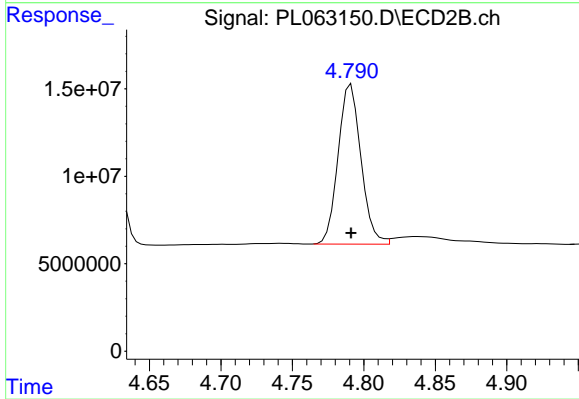
Instrument :
 ECD_L
 ClientSampled :
 PSTDICC050



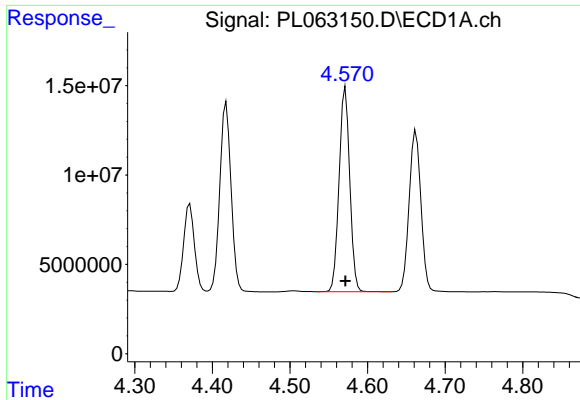
#5 Aldrin
 R.T.: 5.428 min
 Delta R.T.: 0.000 min
 Response: 202791729
 Conc: 50.00 ng/ml



#6 beta-BHC
 R.T.: 4.371 min
 Delta R.T.: 0.000 min
 Response: 47093320
 Conc: 50.00 ng/ml

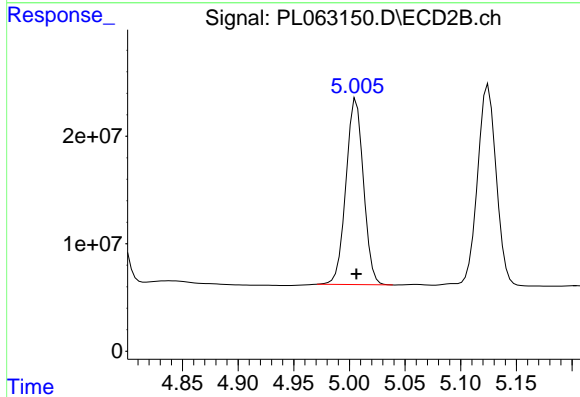


#6 beta-BHC
 R.T.: 4.791 min
 Delta R.T.: 0.000 min
 Response: 101780741
 Conc: 50.00 ng/ml

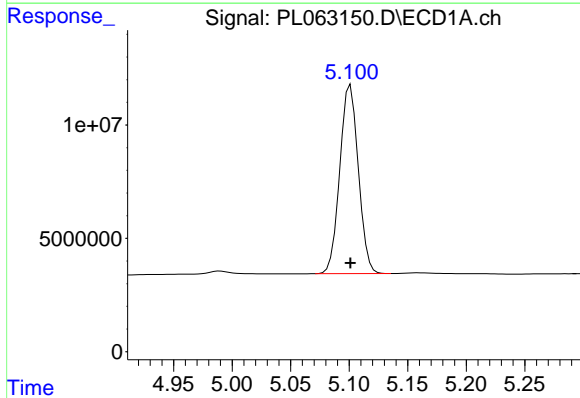


#7 delta-BHC
 R.T.: 4.572 min
 Delta R.T.: 0.000 min
 Response: 109442795
 Conc: 50.00 ng/ml

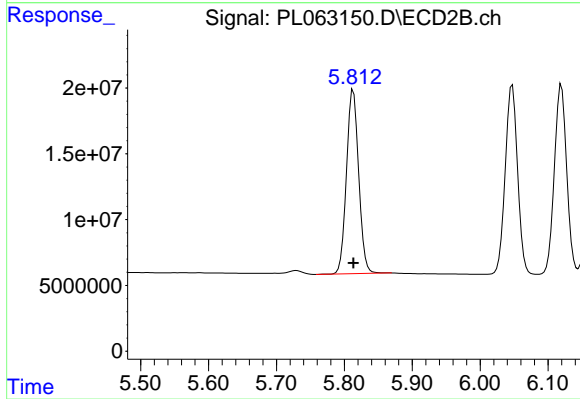
Instrument :
 ECD_L
 ClientSampled :
 PSTDICC050



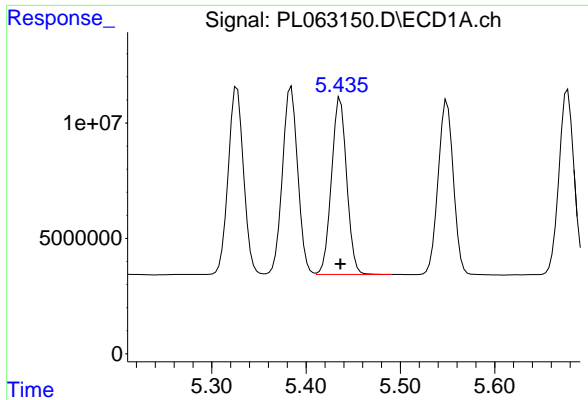
#7 delta-BHC
 R.T.: 5.006 min
 Delta R.T.: 0.000 min
 Response: 189574874
 Conc: 50.00 ng/ml



#8 Heptachlor epoxide
 R.T.: 5.101 min
 Delta R.T.: 0.000 min
 Response: 91668513
 Conc: 50.00 ng/ml

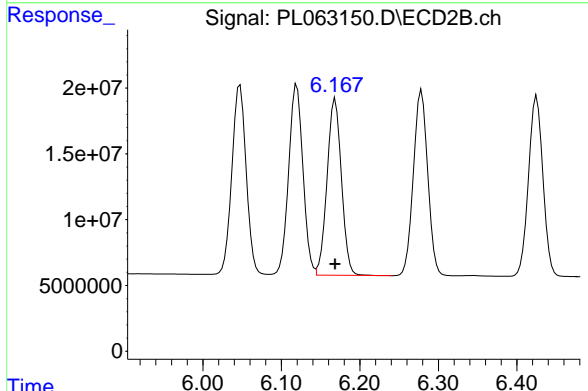


#8 Heptachlor epoxide
 R.T.: 5.813 min
 Delta R.T.: 0.000 min
 Response: 174327202
 Conc: 50.00 ng/ml

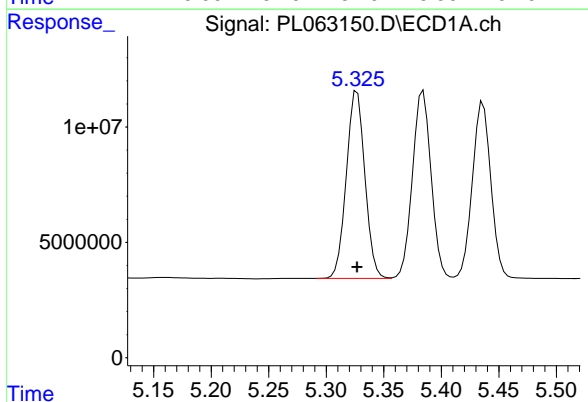


#9 Endosulfan I
 R.T.: 5.436 min
 Delta R.T.: 0.000 min
 Response: 85825623
 Conc: 50.00 ng/ml

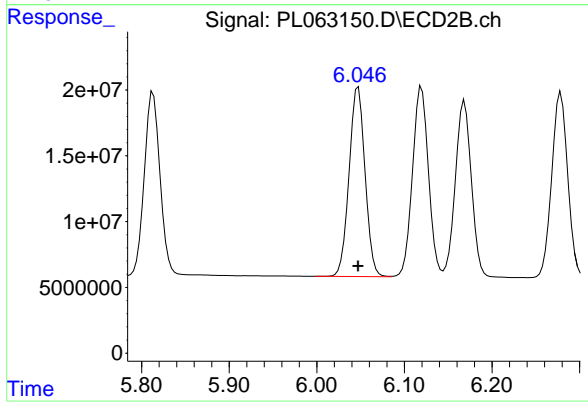
Instrument :
 ECD_L
 ClientSampleId :
 PSTDICC050



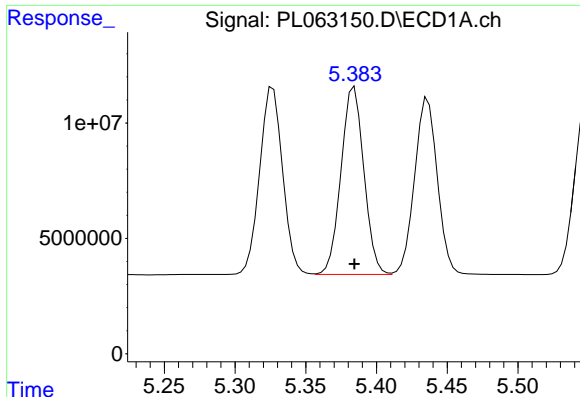
#9 Endosulfan I
 R.T.: 6.169 min
 Delta R.T.: 0.000 min
 Response: 170862148
 Conc: 50.00 ng/ml



#10 gamma-Chlordane
 R.T.: 5.327 min
 Delta R.T.: 0.000 min
 Response: 91672301
 Conc: 50.00 ng/ml



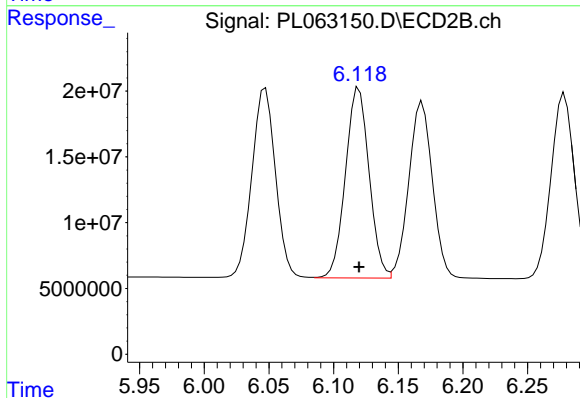
#10 gamma-Chlordane
 R.T.: 6.047 min
 Delta R.T.: 0.000 min
 Response: 182470512
 Conc: 50.00 ng/ml



#11 alpha-Chlordane

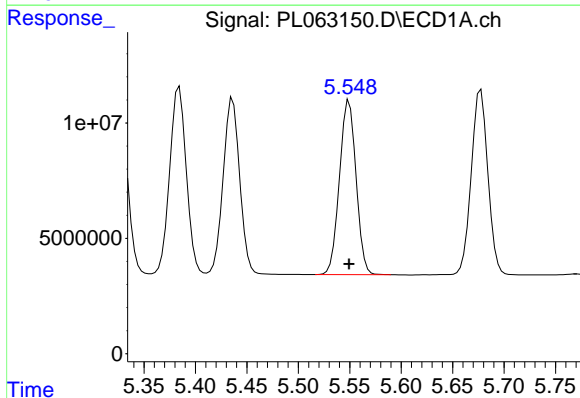
R.T.: 5.384 min
 Delta R.T.: 0.000 min
 Response: 91711841
 Conc: 50.00 ng/ml

Instrument :
 ECD_L
 ClientSampleId :
 PSTDICC050



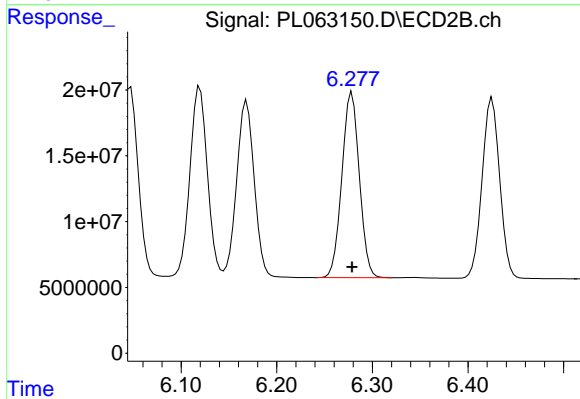
#11 alpha-Chlordane

R.T.: 6.120 min
 Delta R.T.: 0.000 min
 Response: 183692692
 Conc: 50.00 ng/ml



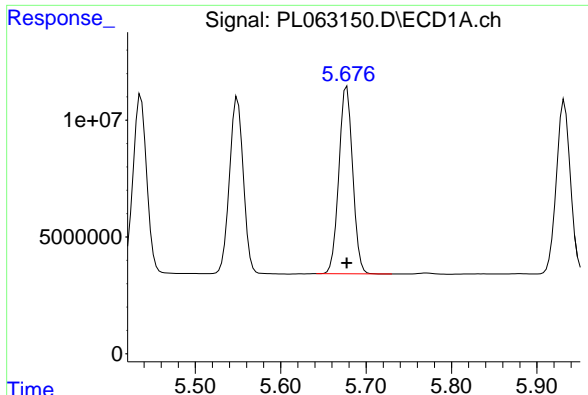
#12 4,4'-DDE

R.T.: 5.550 min
 Delta R.T.: 0.000 min
 Response: 84873028
 Conc: 50.00 ng/ml



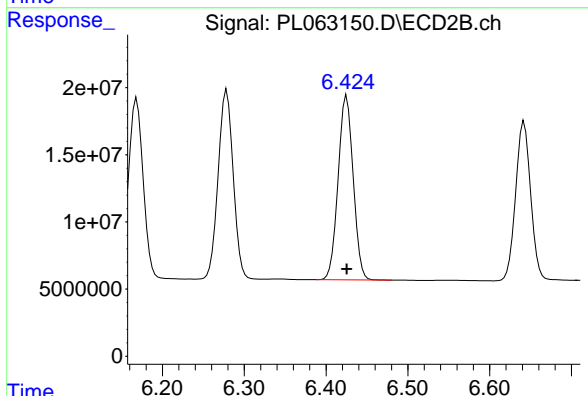
#12 4,4'-DDE

R.T.: 6.279 min
 Delta R.T.: 0.000 min
 Response: 179156127
 Conc: 50.00 ng/ml

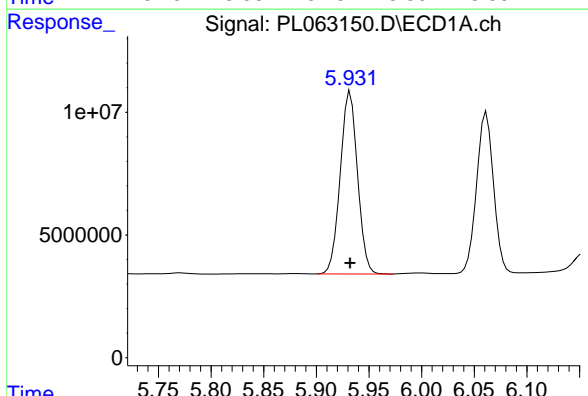


#13 Dieldrin
 R.T.: 5.677 min
 Delta R.T.: 0.000 min
 Response: 90173624
 Conc: 50.00 ng/ml

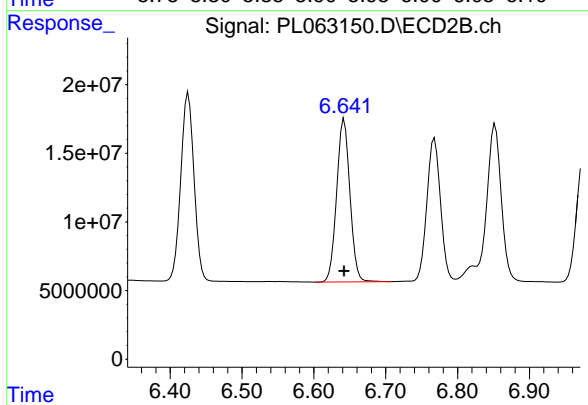
Instrument :
 ECD_L
 ClientSampled :
 PSTDICC050



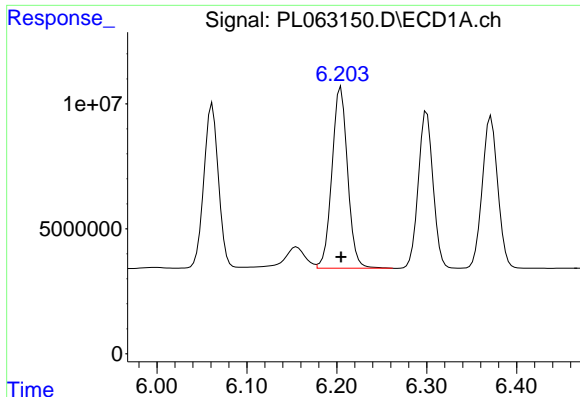
#13 Dieldrin
 R.T.: 6.425 min
 Delta R.T.: 0.000 min
 Response: 175337901
 Conc: 50.00 ng/ml



#14 Endrin
 R.T.: 5.932 min
 Delta R.T.: 0.000 min
 Response: 85153514
 Conc: 50.00 ng/ml



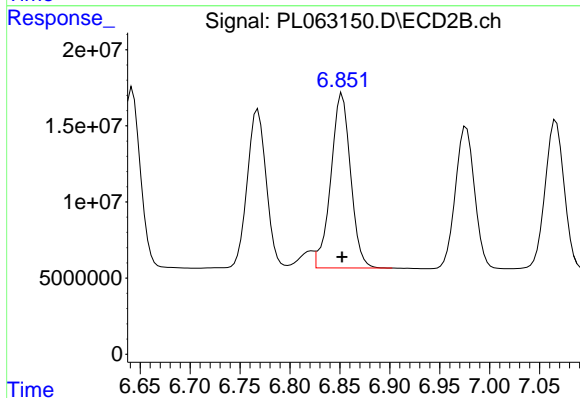
#14 Endrin
 R.T.: 6.642 min
 Delta R.T.: 0.000 min
 Response: 152332134
 Conc: 50.00 ng/ml



#15 Endosulfan II

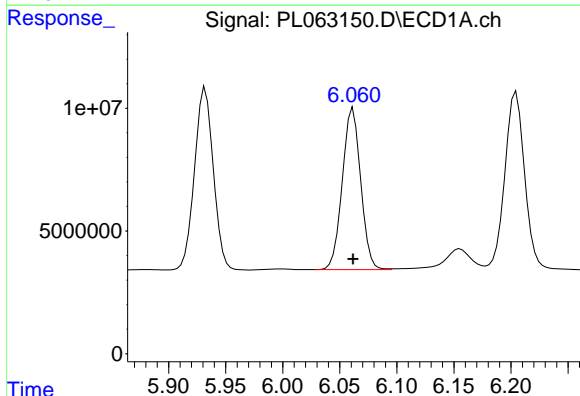
R.T.: 6.205 min
 Delta R.T.: 0.000 min
 Response: 87746417
 Conc: 50.00 ng/ml

Instrument :
 ECD_L
 ClientSampleId :
 PSTDICC050



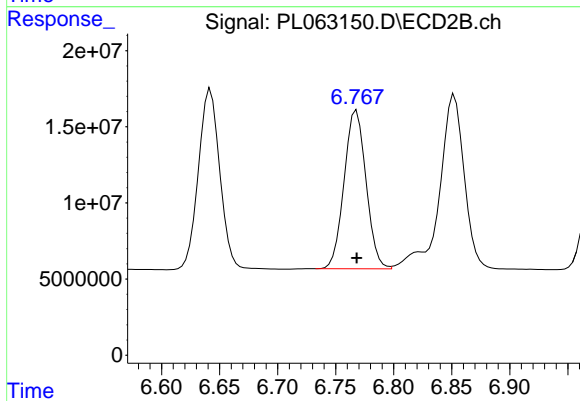
#15 Endosulfan II

R.T.: 6.852 min
 Delta R.T.: 0.000 min
 Response: 157830968
 Conc: 50.00 ng/ml



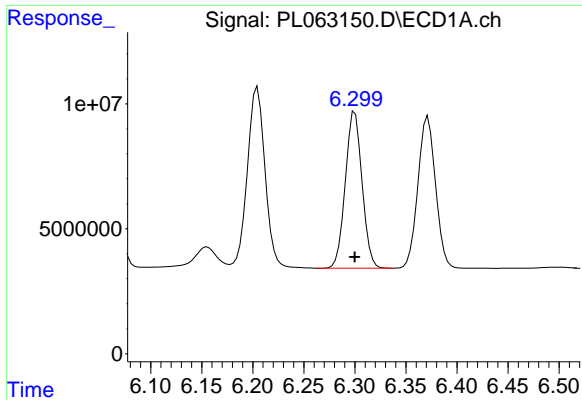
#16 4,4'-DDD

R.T.: 6.062 min
 Delta R.T.: 0.000 min
 Response: 73822768
 Conc: 50.00 ng/ml



#16 4,4'-DDD

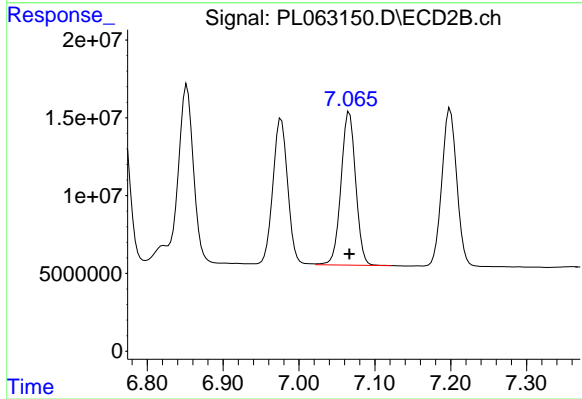
R.T.: 6.768 min
 Delta R.T.: 0.000 min
 Response: 136848575
 Conc: 50.00 ng/ml



#17 4,4'-DDT

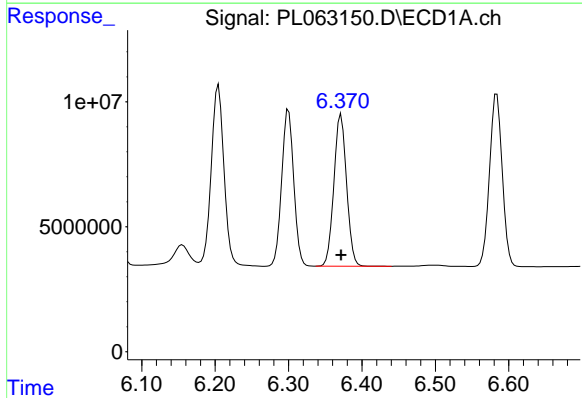
R.T.: 6.300 min
Delta R.T.: 0.000 min
Response: 71534397
Conc: 50.00 ng/ml

Instrument :
ECD_L
ClientSampled :
PSTDICC050



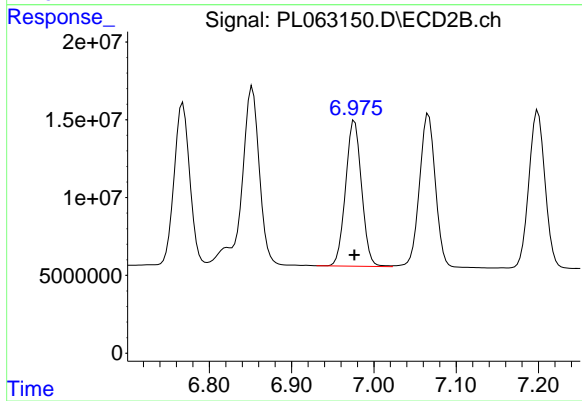
#17 4,4'-DDT

R.T.: 7.066 min
Delta R.T.: 0.000 min
Response: 132193179
Conc: 50.00 ng/ml



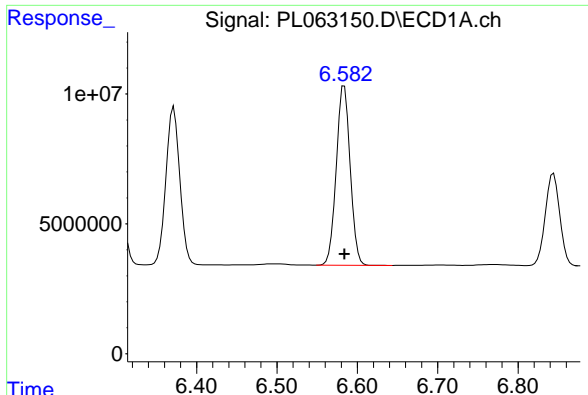
#18 Endrin aldehyde

R.T.: 6.372 min
Delta R.T.: 0.000 min
Response: 73133000
Conc: 50.00 ng/ml



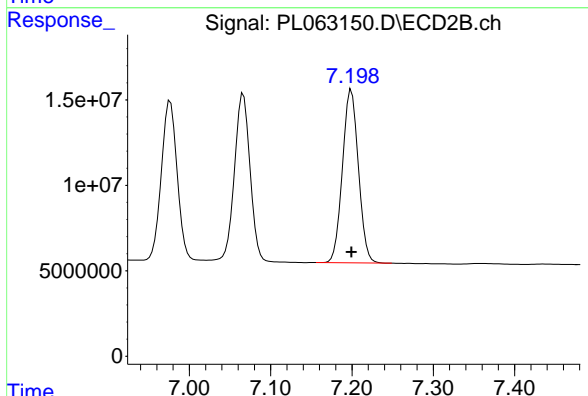
#18 Endrin aldehyde

R.T.: 6.977 min
Delta R.T.: 0.000 min
Response: 126277365
Conc: 50.00 ng/ml

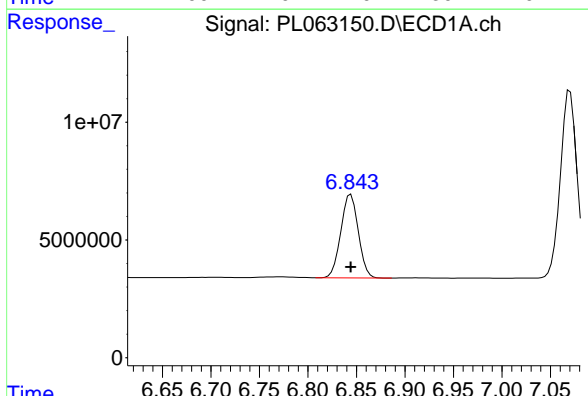


#19 Endosulfan Sulfate
 R.T.: 6.584 min
 Delta R.T.: 0.000 min
 Response: 83202438
 Conc: 50.00 ng/ml

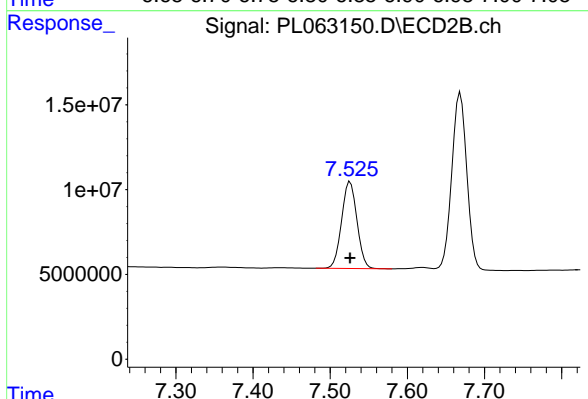
Instrument :
 ECD_L
 ClientSampleId :
 PSTDICC050



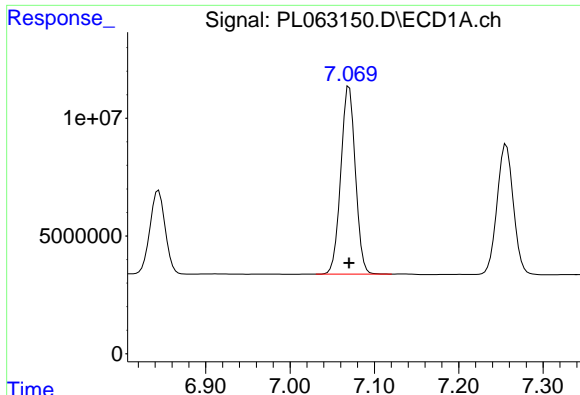
#19 Endosulfan Sulfate
 R.T.: 7.199 min
 Delta R.T.: 0.000 min
 Response: 137723110
 Conc: 50.00 ng/ml



#20 Methoxychlor
 R.T.: 6.844 min
 Delta R.T.: 0.000 min
 Response: 44393409
 Conc: 50.00 ng/ml

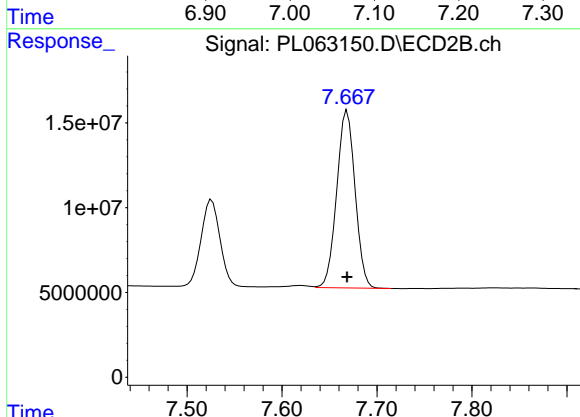


#20 Methoxychlor
 R.T.: 7.526 min
 Delta R.T.: 0.000 min
 Response: 70684483
 Conc: 50.00 ng/ml

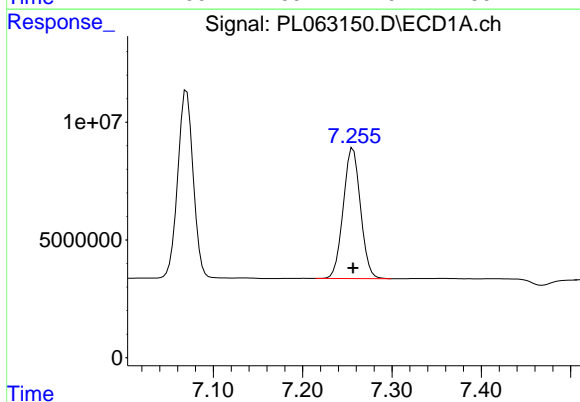


#21 Endrin ketone
 R.T.: 7.070 min
 Delta R.T.: 0.000 min
 Response: 95713527
 Conc: 50.00 ng/ml

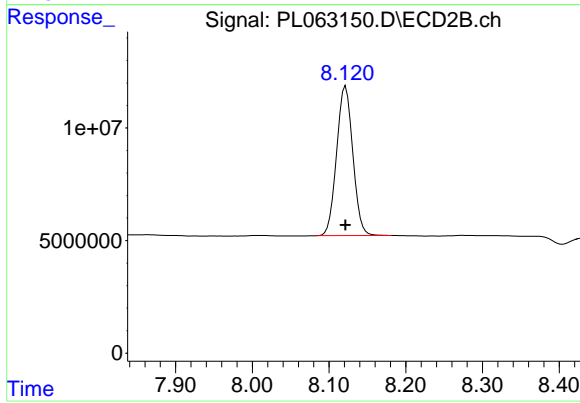
Instrument :
 ECD_L
 ClientSampleId :
 PSTDICC050



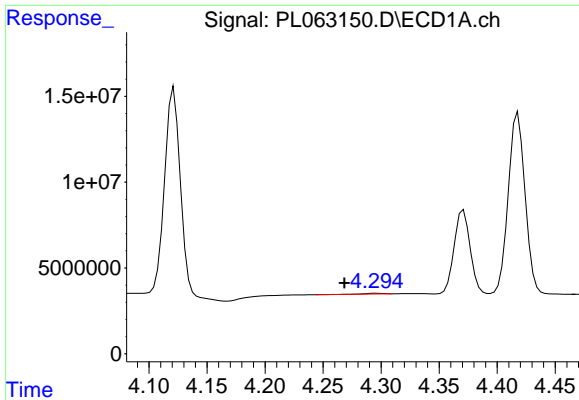
#21 Endrin ketone
 R.T.: 7.669 min
 Delta R.T.: 0.000 min
 Response: 140744256
 Conc: 50.00 ng/ml



#22 Mirex
 R.T.: 7.256 min
 Delta R.T.: 0.000 min
 Response: 74191669
 Conc: 50.00 ng/ml

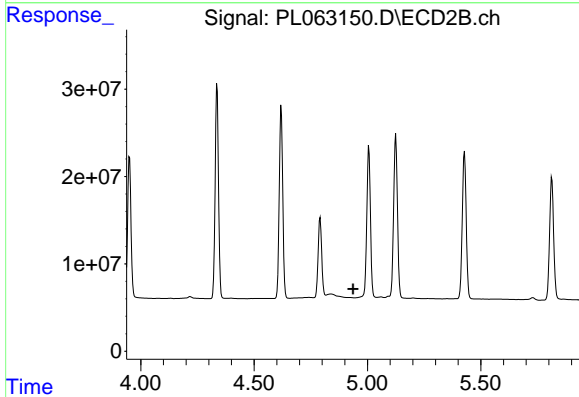


#22 Mirex
 R.T.: 8.122 min
 Delta R.T.: 0.000 min
 Response: 97621498
 Conc: 50.00 ng/ml

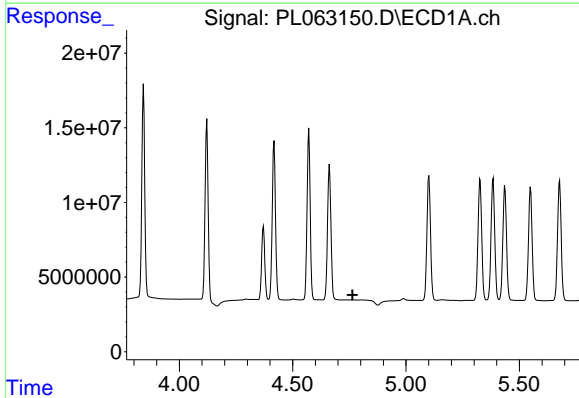


#23 Chlordane-1
 R.T.: 4.295 min
 Delta R.T.: 0.027 min
 Response: 450038
 Conc: 9.02 ng/ml

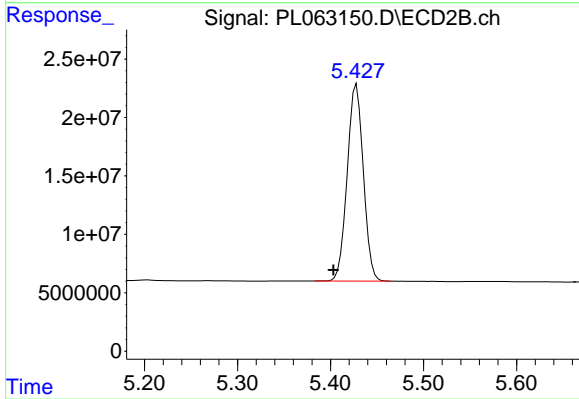
Instrument :
 ECD_L
 ClientSampleId :
 PSTDICC050



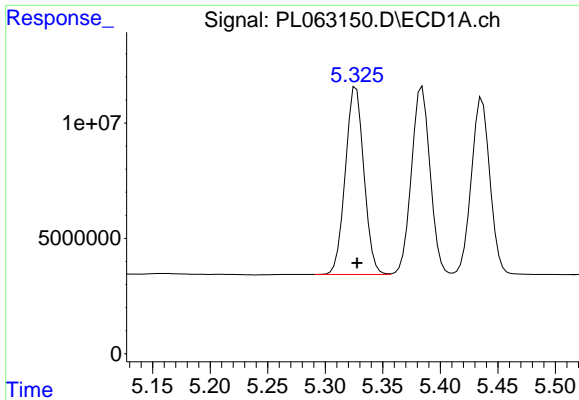
#23 Chlordane-1
 R.T.: 0.000 min
 Exp R.T. : 4.937 min
 Response: 0
 Conc: N.D.



#24 Chlordane-2
 R.T.: 0.000 min
 Exp R.T. : 4.764 min
 Response: 0
 Conc: N.D.

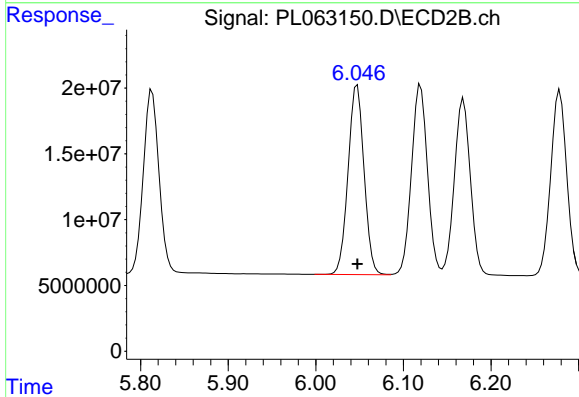


#24 Chlordane-2
 R.T.: 5.428 min
 Delta R.T.: 0.025 min
 Response: 202791729
 Conc: 1723.97 ng/ml

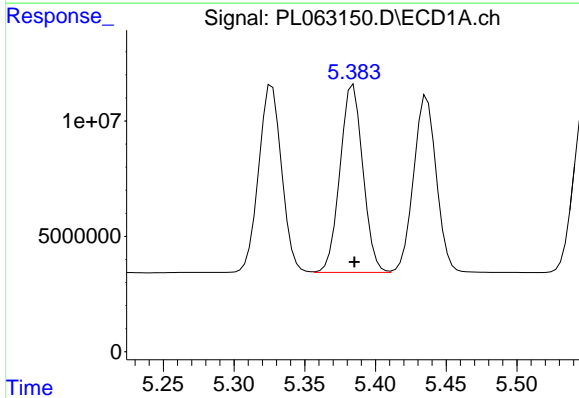


#25 Chlordane-3
 R.T.: 5.327 min
 Delta R.T.: 0.000 min
 Response: 91672301
 Conc: 583.90 ng/ml

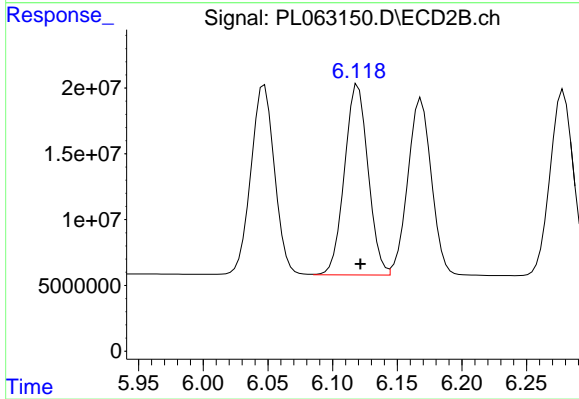
Instrument :
 ECD_L
 ClientSampleId :
 PSTDICC050



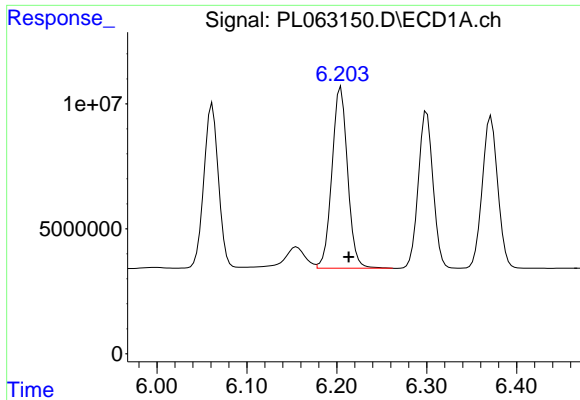
#25 Chlordane-3
 R.T.: 6.047 min
 Delta R.T.: 0.000 min
 Response: 182470512
 Conc: 411.45 ng/ml



#26 Chlordane-4
 R.T.: 5.384 min
 Delta R.T.: 0.000 min
 Response: 91711841
 Conc: 697.65 ng/ml

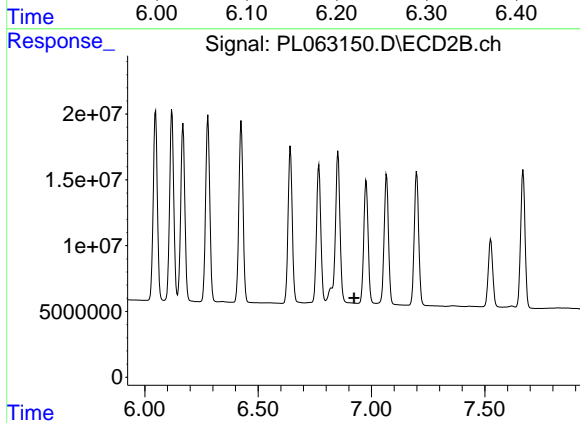


#26 Chlordane-4
 R.T.: 6.120 min
 Delta R.T.: -0.002 min
 Response: 183692692
 Conc: 342.49 ng/ml

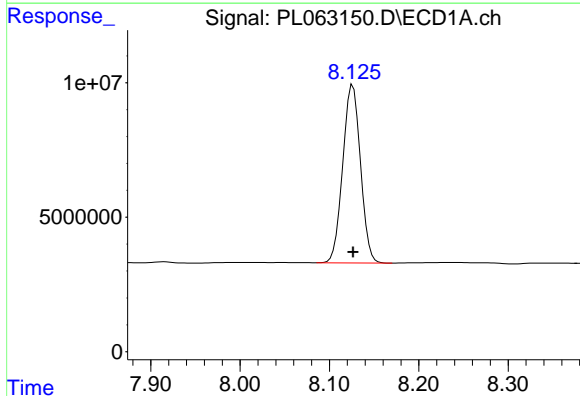


#27 Chlordane-5
 R.T.: 6.205 min
 Delta R.T.: -0.009 min
 Response: 87746417
 Conc: 1507.13 ng/ml

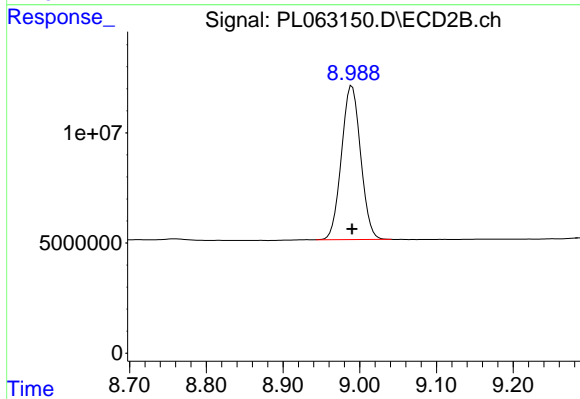
Instrument :
 ECD_L
 ClientSampled :
 PSTDICC050



#27 Chlordane-5
 R.T.: 0.000 min
 Exp R.T. : 6.924 min
 Response: 0
 Conc: N.D.



#28 Decachlorobiphenyl
 R.T.: 8.126 min
 Delta R.T.: 0.000 min
 Response: 91269125
 Conc: 50.00 ng/ml



#28 Decachlorobiphenyl
 R.T.: 8.990 min
 Delta R.T.: 0.000 min
 Response: 121589479
 Conc: 50.00 ng/ml