

Data Path : Z:\pestpcbsrv\HPCHEM1\ECD_L\Data\PL112321\
 Data File : PL071138.D
 Signal(s) : Signal #1: ECD1A.ch Signal #2: ECD2B.ch
 Acq On : 23 Nov 2021 16:07
 Operator : AR\AJ
 Sample : M4812-01MSD
 Misc :
 ALS Vial : 15 Sample Multiplier: 1

Instrument :
 ECD_L
 ClientSampleId :

Integration File signal 1: autoint1.e
 Integration File signal 2: autoint2.e
 Quant Time: Nov 24 02:53:33 2021
 Quant Method : Z:\pestpcbsrv\HPCHEM1\ECD_L\methods\PL110321.M
 Quant Title : GC Extractables
 QLast Update : Thu Nov 04 19:28:07 2021
 Response via : Initial Calibration
 Integrator: ChemStation

Volume Inj. : 1 µl
 Signal #1 Phase : ZB-MR2 Signal #2 Phase: ZB-MR1
 Signal #1 Info : 30M x 0.32mm x0.2 Signal #2 Info : 30M x 0.32mm x0.5µm

| | Compound | RT#1 | RT#2 | Resp#1 | Resp#2 | ng/ml | ng/ml |
|-----------------------------|-----------------|--------|--------|----------|----------|----------|------------|
| ----- | | | | | | | |
| System Monitoring Compounds | | | | | | | |
| 1) | SA Tetrachlo... | 4.565 | 5.500 | 9180396 | 23819872 | 18.743 | 18.892 |
| 28) | SA Decachlor... | 10.328 | 11.392 | 10791513 | 19796352 | 15.793 | 14.802 |
| Target Compounds | | | | | | | |
| 2) | A alpha-BHC | 5.271 | 6.081 | 32216662 | 91655242 | 48.127 | 49.791 |
| 3) | MA gamma-BHC... | 5.694 | 6.476 | 31815636 | 86033046 | 47.431 | 49.614 |
| 4) | MA Heptachlor | 6.101 | 7.123 | 32585398 | 85654116 | 45.414 | 52.734 |
| 5) | MB Aldrin | 6.425 | 7.493 | 31006737 | 80729543 | 48.489 | 49.716 |
| 6) | B beta-BHC | 6.077 | 6.733 | 13644840 | 39764637 | 42.006 | 46.409 |
| 7) | B delta-BHC | 6.336 | 6.999 | 31515877 | 79788838 | 47.620 | 47.713 |
| 8) | B Heptachlo... | 7.002 | 7.960 | 30656677 | 76066591 | 47.153 | 49.907 |
| 9) | A Endosulfan I | 7.405 | 8.364 | 29275047 | 69894867 | 47.791 | 48.585 |
| 10) | B gamma-Chl... | 7.280 | 8.230 | 31407494 | 76116419 | 47.313 | 49.159 |
| 11) | B alpha-Chl... | 7.349 | 8.310 | 31394807 | 74616188 | 47.114 | 49.058 |
| 12) | B 4,4'-DDE | 7.564 | 8.499 | 27950097 | 72732896 | 47.972 | 49.293 |
| 13) | MA Dieldrin | 7.691 | 8.654 | 29749580 | 72805283 | 47.659 | 49.965 |
| 14) | MA Endrin | 7.982 | 8.893 | 26393235 | 58156861 | 46.552 | 50.209 |
| 15) | B Endosulfa... | 8.293 | 9.128 | 27145595 | 61205376 | 44.843 | 50.113 |
| 16) | A 4,4'-DDD | 8.150 | 9.039 | 26002180 | 61360709 | 51.176 | 50.988 |
| 17) | MA 4,4'-DDT | 8.411 | 9.355 | 23069788 | 54896365 | 41.947 | 43.514 |
| 18) | B Endrin al... | 8.482 | 9.262 | 21857591 | 48469106 | 48.111 | 50.120 |
| 19) | B Endosulfa... | 8.713 | 9.500 | 28930047 | 60055641 | 46.897 | 48.455 |
| 20) | A Methoxychlor | 9.006 | 9.842 | 14644612 | 27566940 | 40.030 | 40.731 |
| 21) | B Endrin ke... | 9.231 | 9.996 | 35455835 | 69026018 | 49.585 | 48.085 |
| 22) | Mirex | 9.414 | 10.461 | 29376292 | 50310744 | 47.834 | 48.301 |
| 24) | Chlordane-2 | 0.000 | 7.493f | 0 | 80729543 | N.D. | 1539.027 # |
| 25) | Chlordane-3 | 7.280 | 8.230 | 31407494 | 76116419 | 514.430 | 376.575 # |
| 26) | Chlordane-4 | 7.349 | 8.310 | 31394807 | 74616188 | 478.212 | 307.479 # |
| 27) | Chlordane-5 | 8.293 | 0.000 | 27145595 | 0 | 1214.140 | N.D. # |

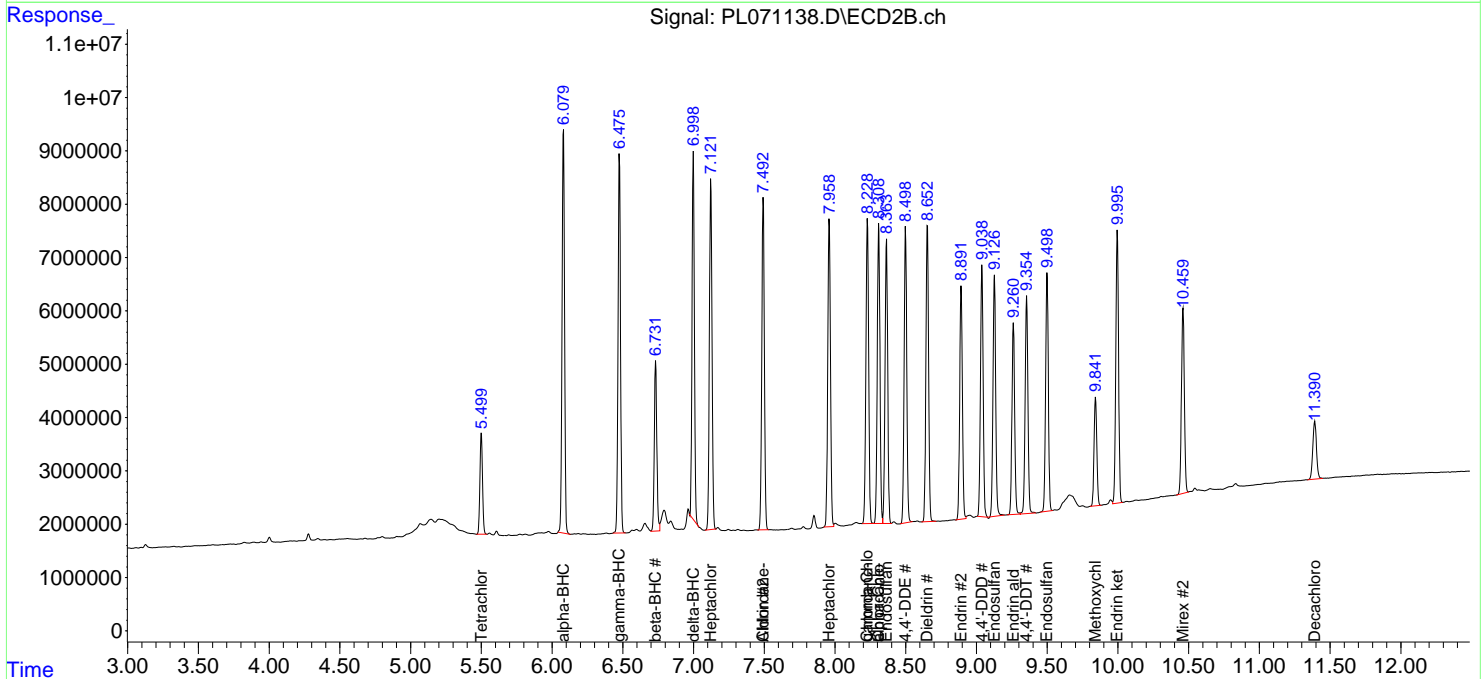
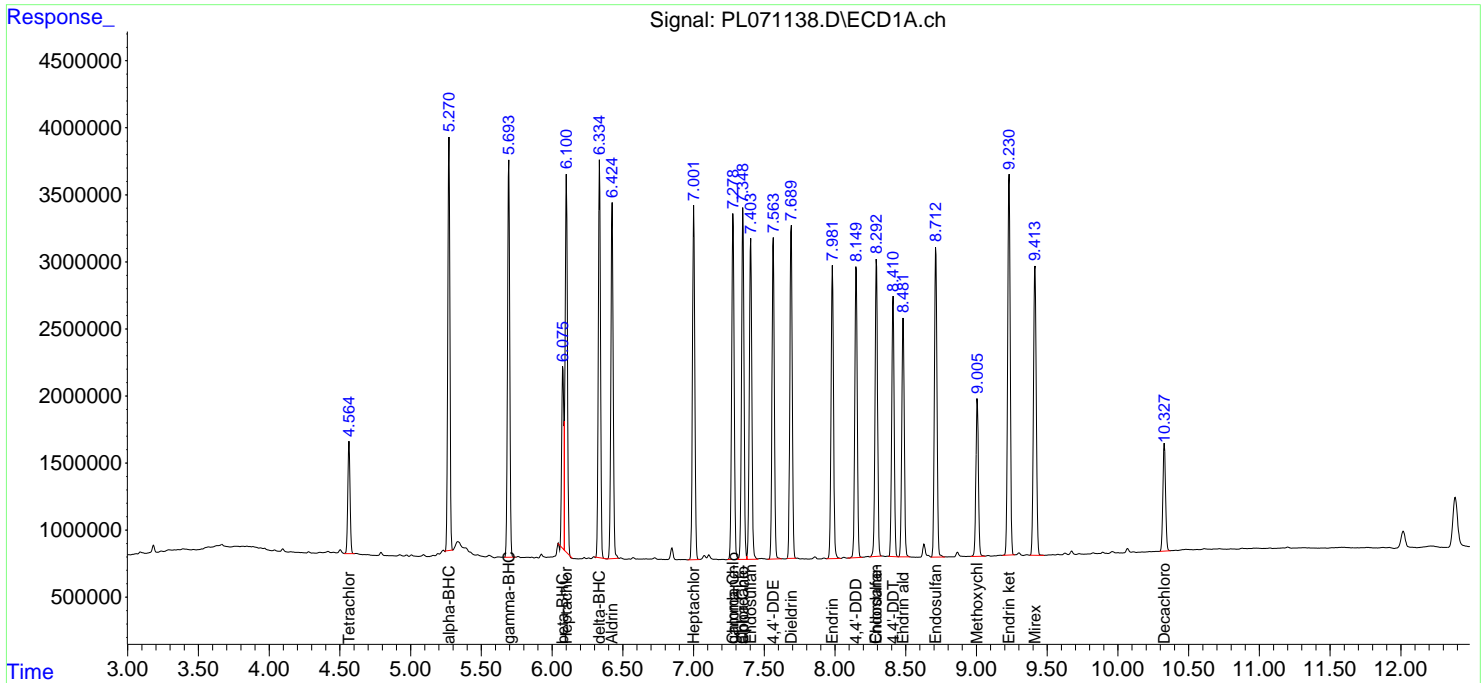
(f)=RT Delta > 1/2 Window (#)=Amounts differ by > 25% (m)=manual int.

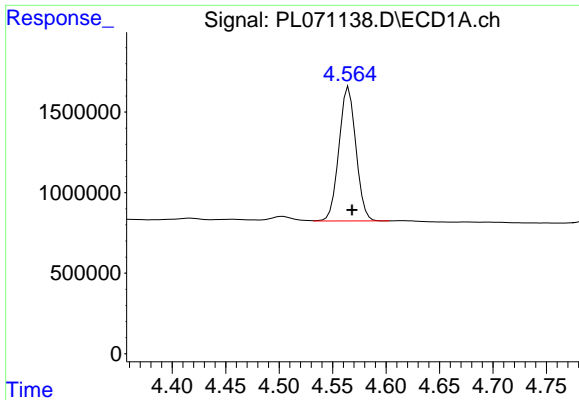
Data Path : Z:\pestpcbsrv\HPCHEM1\ECD_L\Data\PL112321\
 Data File : PL071138.D
 Signal(s) : Signal #1: ECD1A.ch Signal #2: ECD2B.ch
 Acq On : 23 Nov 2021 16:07
 Operator : AR\AJ
 Sample : M4812-01MSD
 Misc :
 ALS Vial : 15 Sample Multiplier: 1

Instrument :
 ECD_L
 ClientSampleId :

Integration File signal 1: autoint1.e
 Integration File signal 2: autoint2.e
 Quant Time: Nov 24 02:53:33 2021
 Quant Method : Z:\pestpcbsrv\HPCHEM1\ECD_L\methods\PL110321.M
 Quant Title : GC Extractables
 QLast Update : Thu Nov 04 19:28:07 2021
 Response via : Initial Calibration
 Integrator: ChemStation

Volume Inj. : 1 µl
 Signal #1 Phase : ZB-MR2 Signal #2 Phase: ZB-MR1
 Signal #1 Info : 30M x 0.32mm x0.2 Signal #2 Info : 30M x 0.32mm x0.5µm

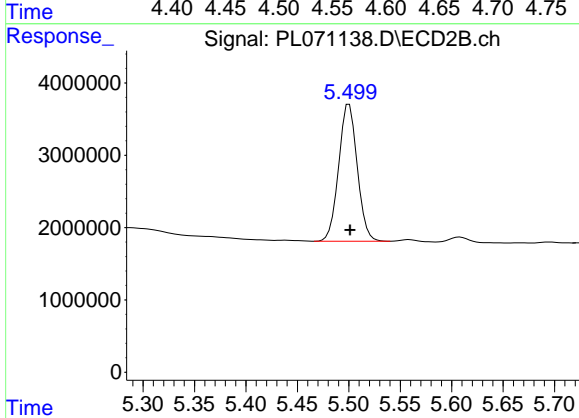




#1 Tetrachloro-m-xylene

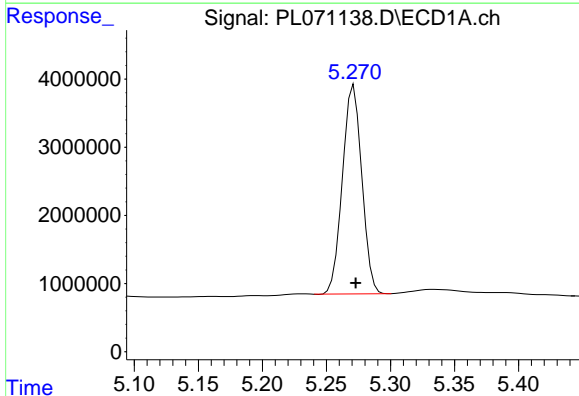
R.T.: 4.565 min
 Delta R.T.: -0.003 min
 Response: 9180396
 Conc: 18.74 ng/ml

Instrument :
 ECD_L
 ClientSampleId :



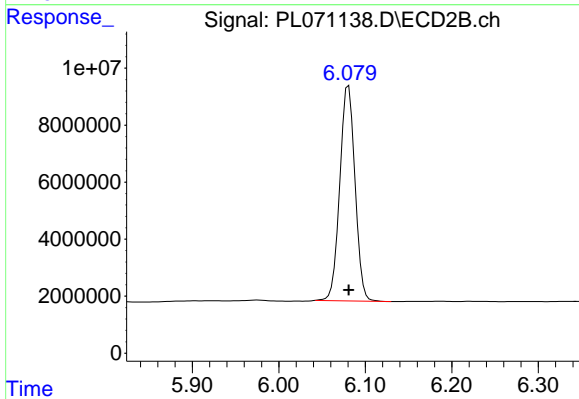
#1 Tetrachloro-m-xylene

R.T.: 5.500 min
 Delta R.T.: 0.000 min
 Response: 23819872
 Conc: 18.89 ng/ml



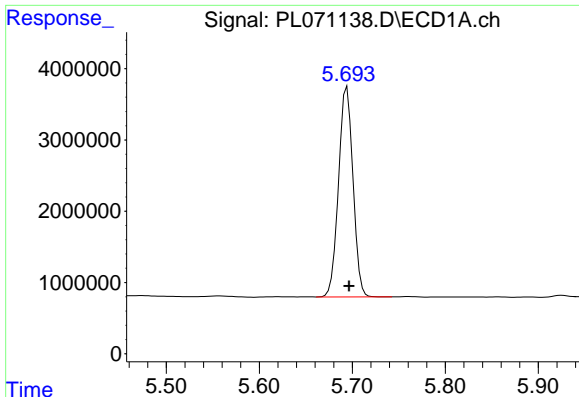
#2 alpha-BHC

R.T.: 5.271 min
 Delta R.T.: -0.001 min
 Response: 32216662
 Conc: 48.13 ng/ml



#2 alpha-BHC

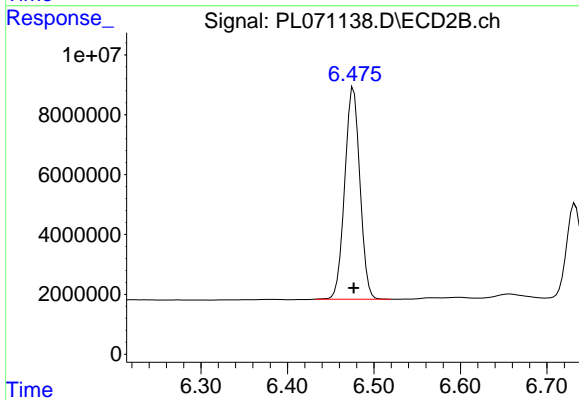
R.T.: 6.081 min
 Delta R.T.: 0.000 min
 Response: 91655242
 Conc: 49.79 ng/ml



#3 gamma-BHC (Lindane)

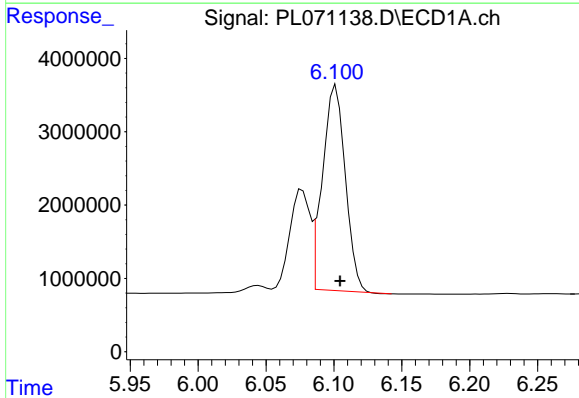
R.T.: 5.694 min
Delta R.T.: -0.002 min
Response: 31815636
Conc: 47.43 ng/ml

Instrument :
ECD_L
ClientSampleId :



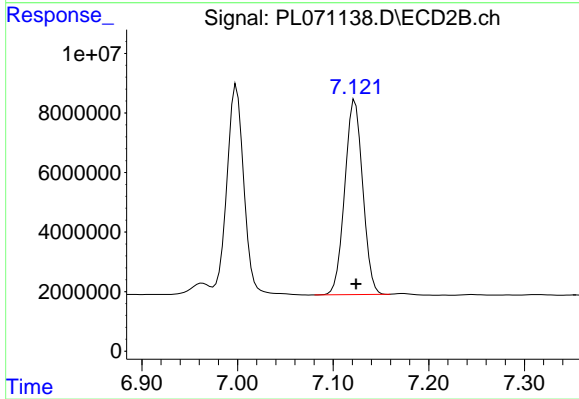
#3 gamma-BHC (Lindane)

R.T.: 6.476 min
Delta R.T.: 0.000 min
Response: 86033046
Conc: 49.61 ng/ml



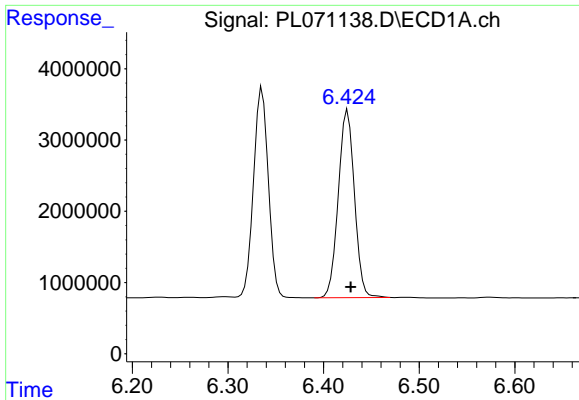
#4 Heptachlor

R.T.: 6.101 min
Delta R.T.: -0.003 min
Response: 32585398
Conc: 45.41 ng/ml



#4 Heptachlor

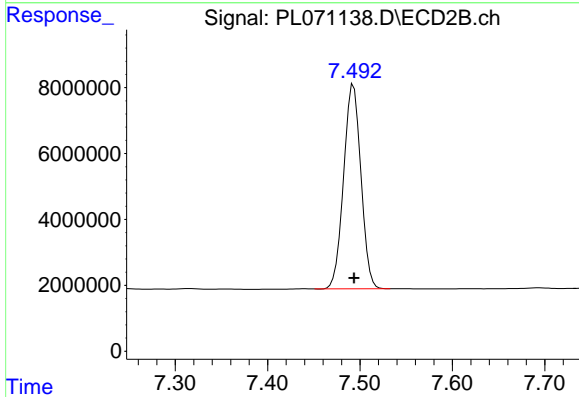
R.T.: 7.123 min
Delta R.T.: -0.001 min
Response: 85654116
Conc: 52.73 ng/ml



#5 Aldrin

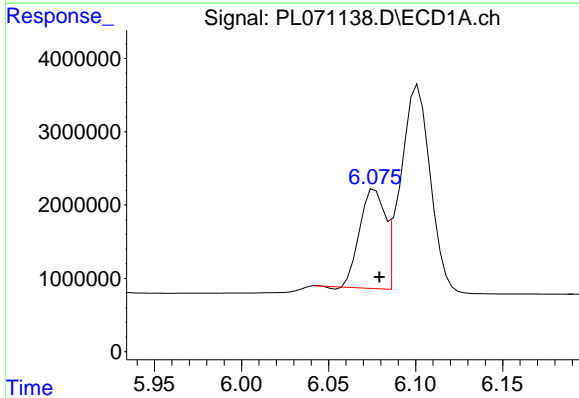
R.T.: 6.425 min
Delta R.T.: -0.003 min
Response: 31006737
Conc: 48.49 ng/ml

Instrument :
ECD_L
ClientSampleId :



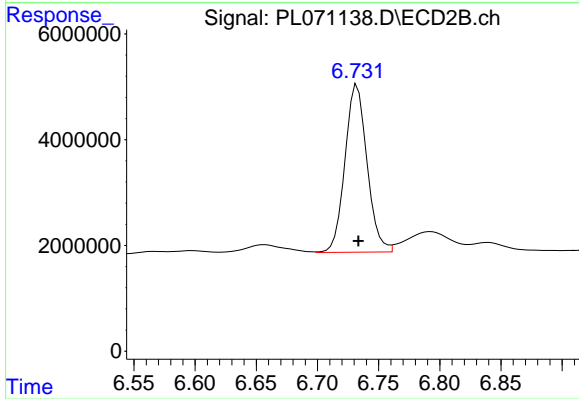
#5 Aldrin

R.T.: 7.493 min
Delta R.T.: 0.000 min
Response: 80729543
Conc: 49.72 ng/ml



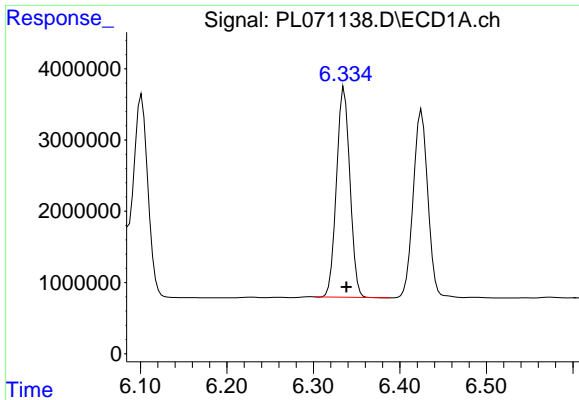
#6 beta-BHC

R.T.: 6.077 min
Delta R.T.: -0.002 min
Response: 13644840
Conc: 42.01 ng/ml



#6 beta-BHC

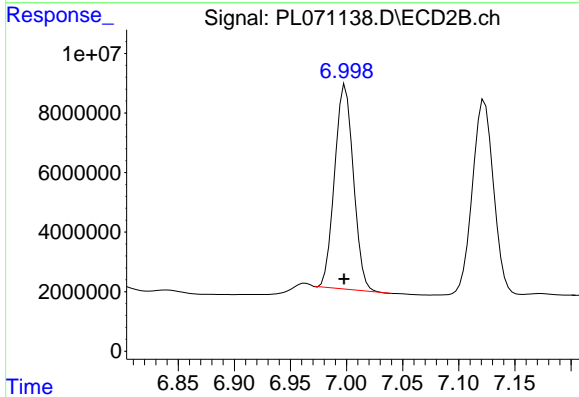
R.T.: 6.733 min
Delta R.T.: 0.000 min
Response: 39764637
Conc: 46.41 ng/ml



#7 delta-BHC

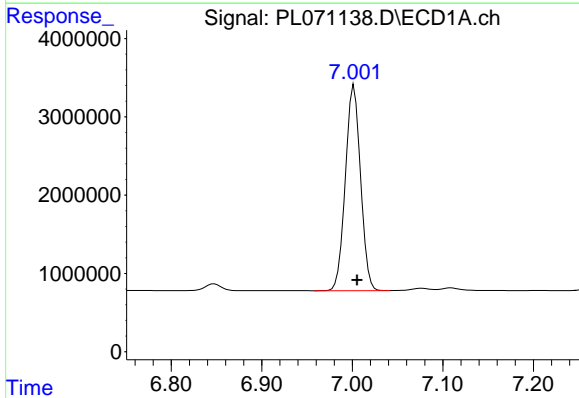
R.T.: 6.336 min
 Delta R.T.: -0.002 min
 Response: 31515877
 Conc: 47.62 ng/ml

Instrument :
 ECD_L
 ClientSampleId :



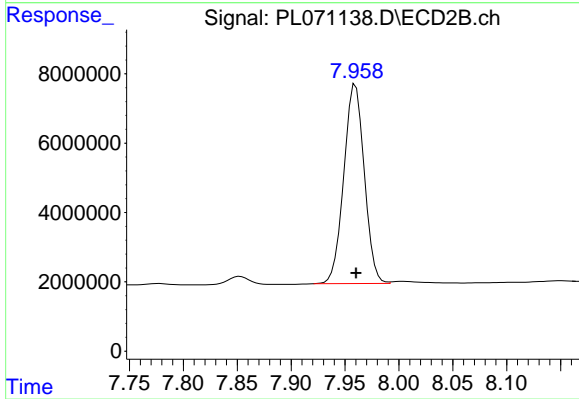
#7 delta-BHC

R.T.: 6.999 min
 Delta R.T.: 0.001 min
 Response: 79788838
 Conc: 47.71 ng/ml



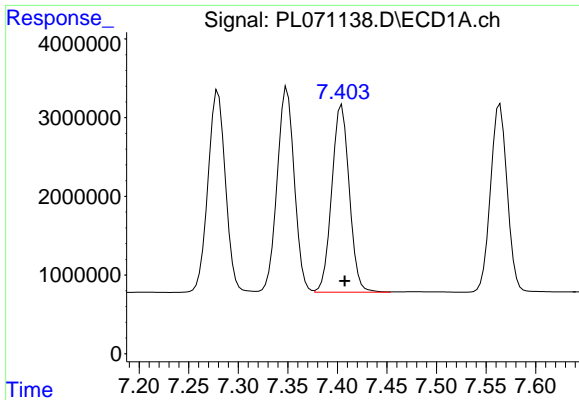
#8 Heptachlor epoxide

R.T.: 7.002 min
 Delta R.T.: -0.003 min
 Response: 30656677
 Conc: 47.15 ng/ml



#8 Heptachlor epoxide

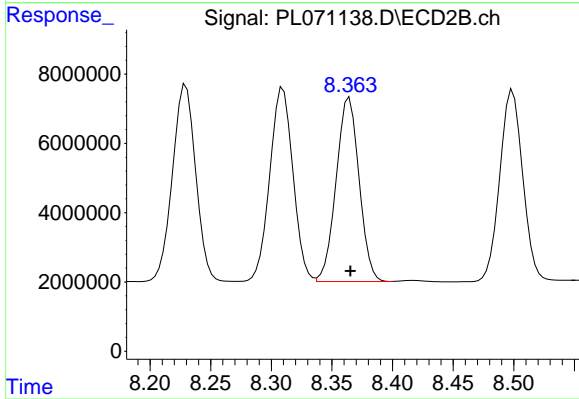
R.T.: 7.960 min
 Delta R.T.: 0.000 min
 Response: 76066591
 Conc: 49.91 ng/ml



#9 Endosulfan I

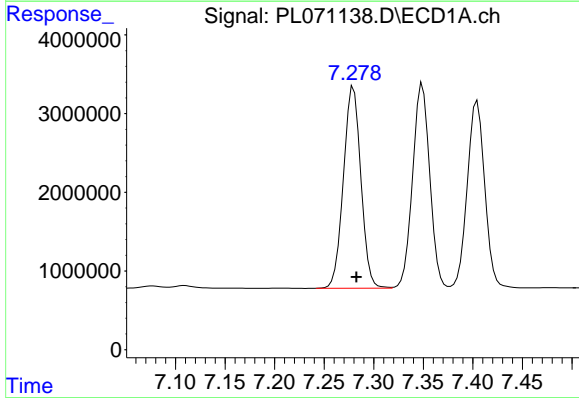
R.T.: 7.405 min
Delta R.T.: -0.003 min
Response: 29275047
Conc: 47.79 ng/ml

Instrument :
ECD_L
ClientSampleId :



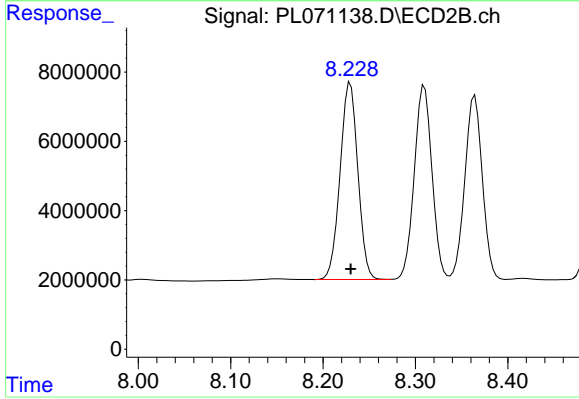
#9 Endosulfan I

R.T.: 8.364 min
Delta R.T.: 0.000 min
Response: 69894867
Conc: 48.58 ng/ml



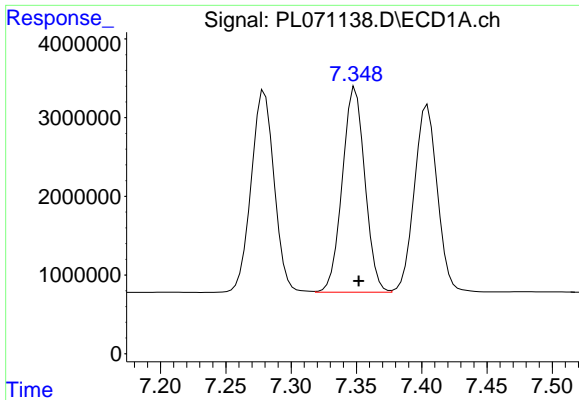
#10 gamma-Chlordane

R.T.: 7.280 min
Delta R.T.: -0.003 min
Response: 31407494
Conc: 47.31 ng/ml



#10 gamma-Chlordane

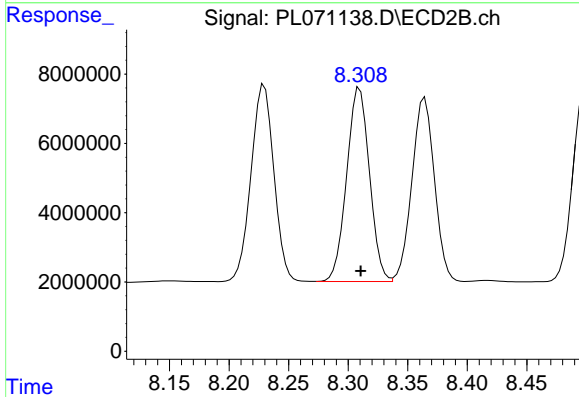
R.T.: 8.230 min
Delta R.T.: 0.000 min
Response: 76116419
Conc: 49.16 ng/ml



#11 alpha-Chlordane

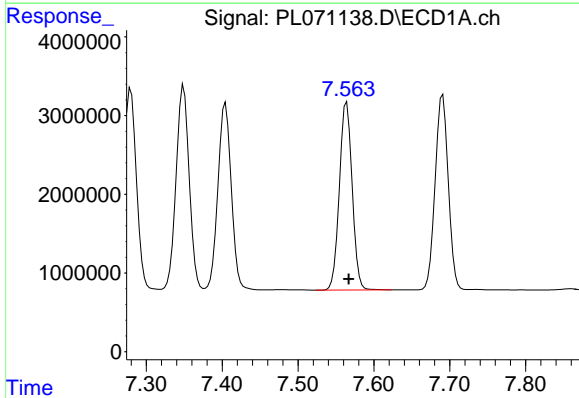
R.T.: 7.349 min
 Delta R.T.: -0.003 min
 Response: 31394807
 Conc: 47.11 ng/ml

Instrument :
 ECD_L
 ClientSampleId :



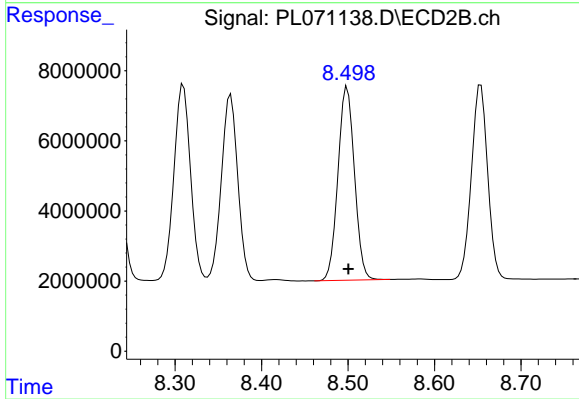
#11 alpha-Chlordane

R.T.: 8.310 min
 Delta R.T.: -0.001 min
 Response: 74616188
 Conc: 49.06 ng/ml



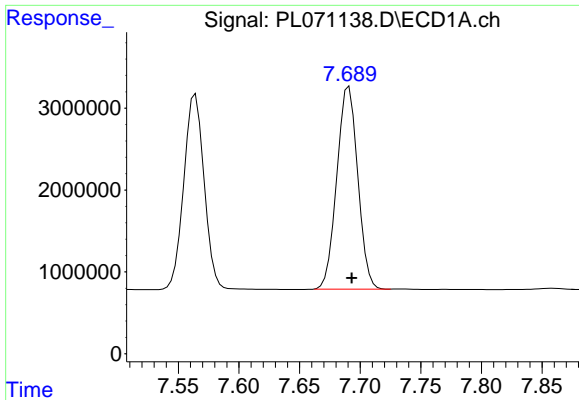
#12 4,4'-DDE

R.T.: 7.564 min
 Delta R.T.: -0.003 min
 Response: 27950097
 Conc: 47.97 ng/ml



#12 4,4'-DDE

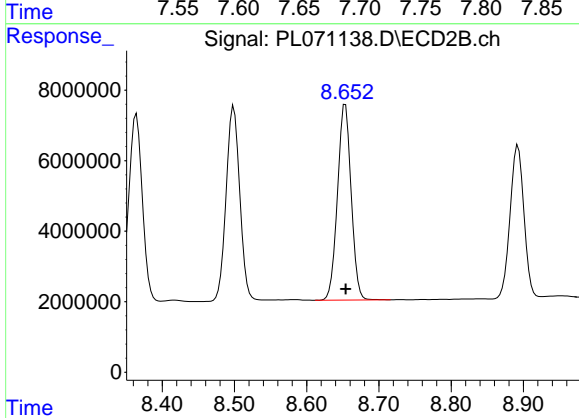
R.T.: 8.499 min
 Delta R.T.: -0.001 min
 Response: 72732896
 Conc: 49.29 ng/ml



#13 Dieldrin

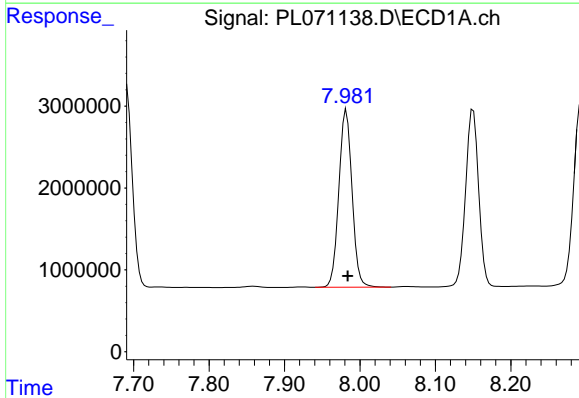
R.T.: 7.691 min
 Delta R.T.: -0.002 min
 Response: 29749580
 Conc: 47.66 ng/ml

Instrument :
 ECD_L
 ClientSampleId :



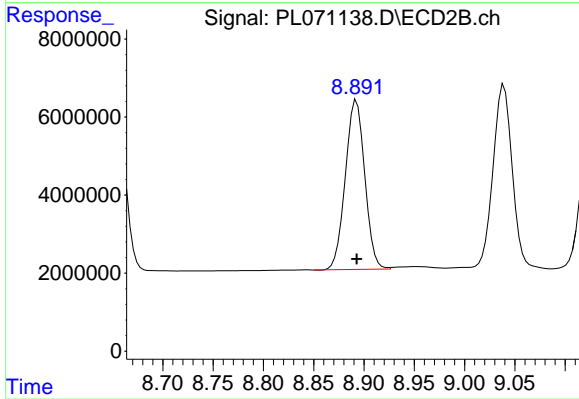
#13 Dieldrin

R.T.: 8.654 min
 Delta R.T.: 0.000 min
 Response: 72805283
 Conc: 49.96 ng/ml



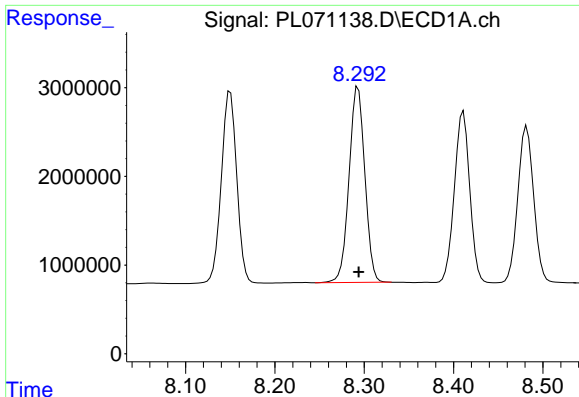
#14 Endrin

R.T.: 7.982 min
 Delta R.T.: -0.002 min
 Response: 26393235
 Conc: 46.55 ng/ml



#14 Endrin

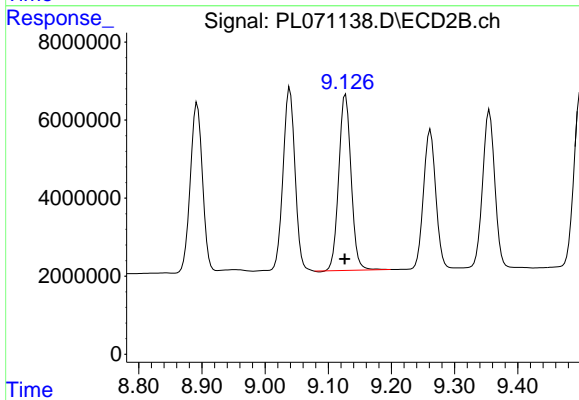
R.T.: 8.893 min
 Delta R.T.: 0.000 min
 Response: 58156861
 Conc: 50.21 ng/ml



#15 Endosulfan II

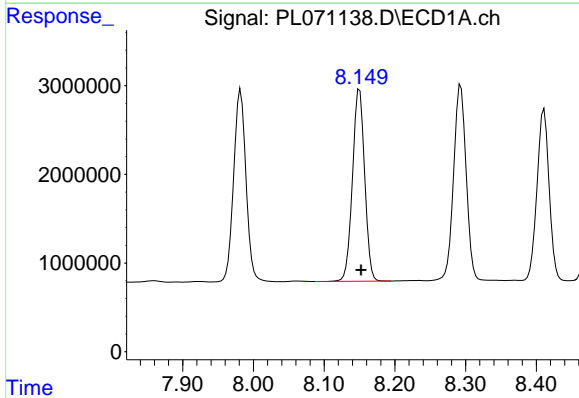
R.T.: 8.293 min
 Delta R.T.: 0.000 min
 Response: 27145595
 Conc: 44.84 ng/ml

Instrument :
 ECD_L
 ClientSampleId :



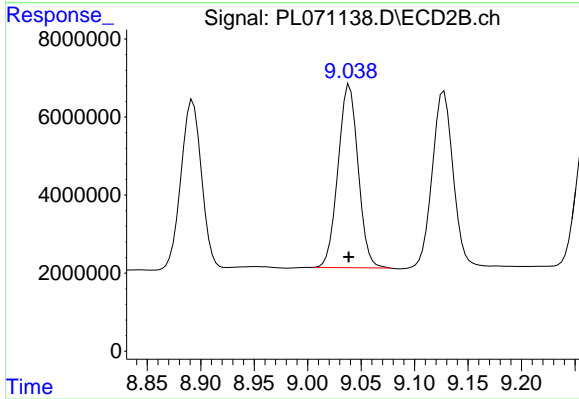
#15 Endosulfan II

R.T.: 9.128 min
 Delta R.T.: 0.001 min
 Response: 61205376
 Conc: 50.11 ng/ml



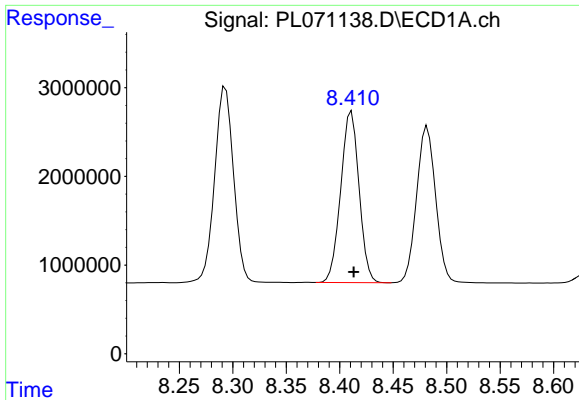
#16 4,4'-DDD

R.T.: 8.150 min
 Delta R.T.: -0.002 min
 Response: 26002180
 Conc: 51.18 ng/ml



#16 4,4'-DDD

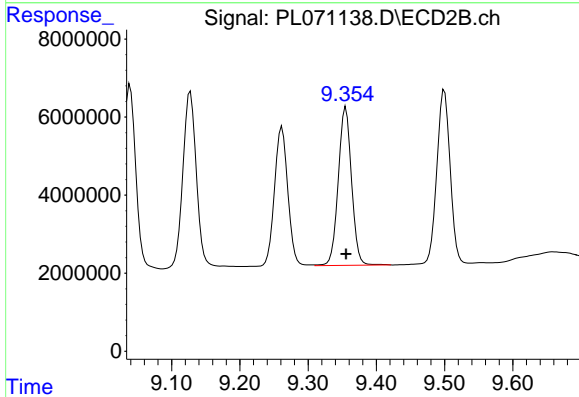
R.T.: 9.039 min
 Delta R.T.: 0.000 min
 Response: 61360709
 Conc: 50.99 ng/ml



#17 4,4'-DDT

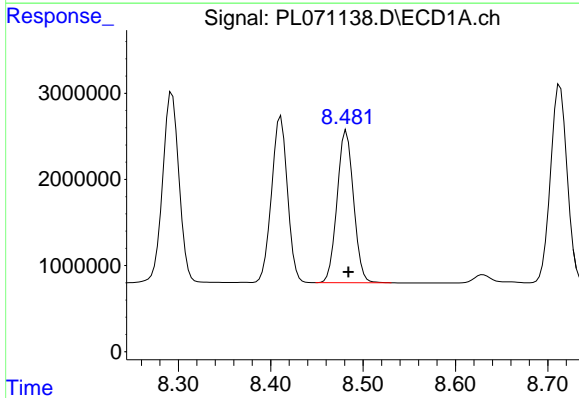
R.T.: 8.411 min
 Delta R.T.: -0.002 min
 Response: 23069788
 Conc: 41.95 ng/ml

Instrument :
 ECD_L
 ClientSampleId :



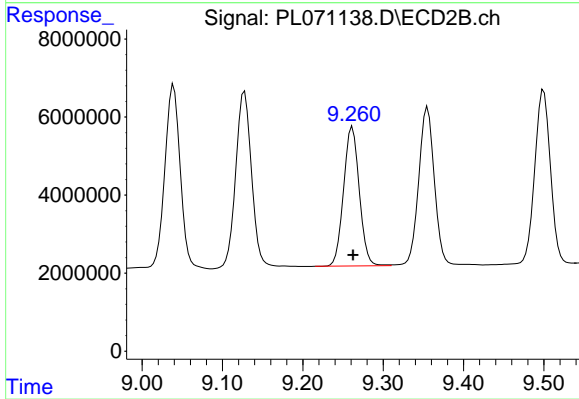
#17 4,4'-DDT

R.T.: 9.355 min
 Delta R.T.: 0.000 min
 Response: 54896365
 Conc: 43.51 ng/ml



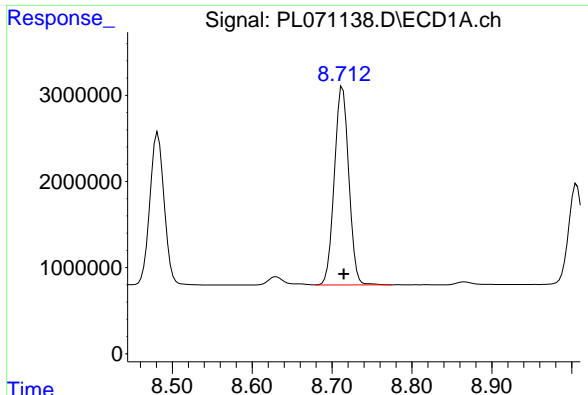
#18 Endrin aldehyde

R.T.: 8.482 min
 Delta R.T.: -0.002 min
 Response: 21857591
 Conc: 48.11 ng/ml



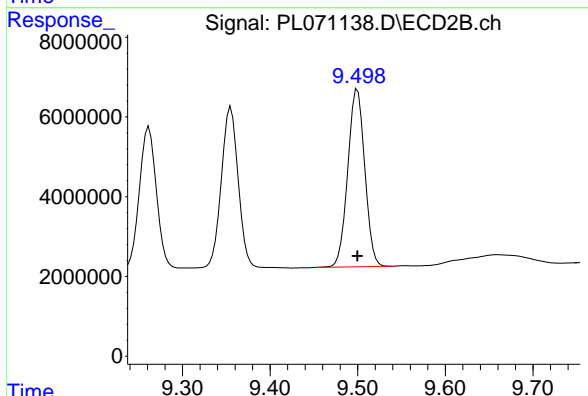
#18 Endrin aldehyde

R.T.: 9.262 min
 Delta R.T.: 0.000 min
 Response: 48469106
 Conc: 50.12 ng/ml

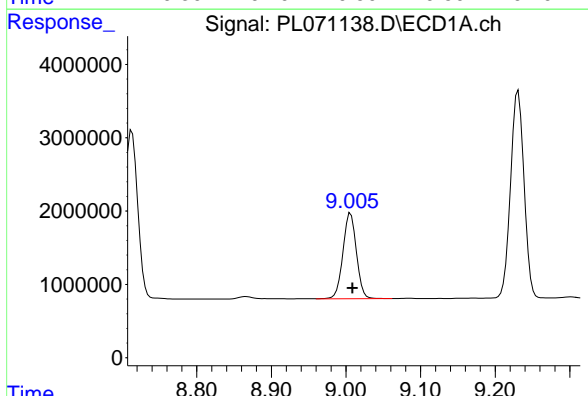


#19 Endosulfan Sulfate
 R.T.: 8.713 min
 Delta R.T.: -0.002 min
 Response: 28930047
 Conc: 46.90 ng/ml

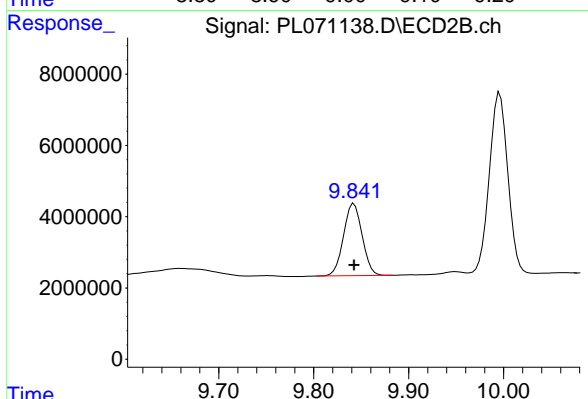
Instrument :
 ECD_L
 ClientSampleId :



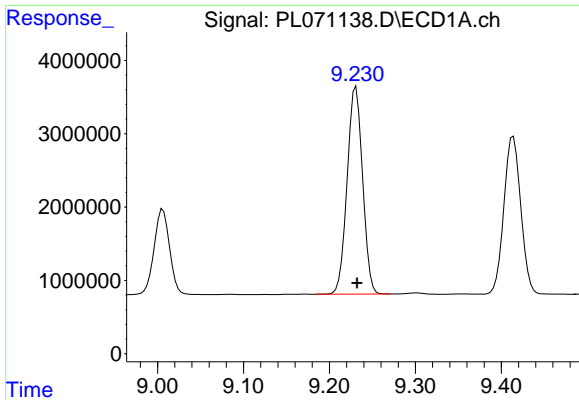
#19 Endosulfan Sulfate
 R.T.: 9.500 min
 Delta R.T.: 0.000 min
 Response: 60055641
 Conc: 48.46 ng/ml



#20 Methoxychlor
 R.T.: 9.006 min
 Delta R.T.: -0.002 min
 Response: 14644612
 Conc: 40.03 ng/ml



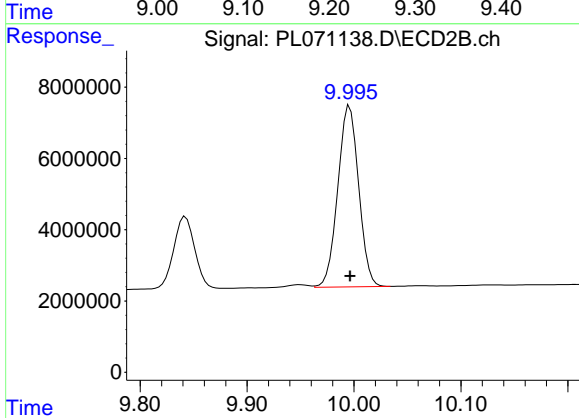
#20 Methoxychlor
 R.T.: 9.842 min
 Delta R.T.: 0.000 min
 Response: 27566940
 Conc: 40.73 ng/ml



#21 Endrin ketone

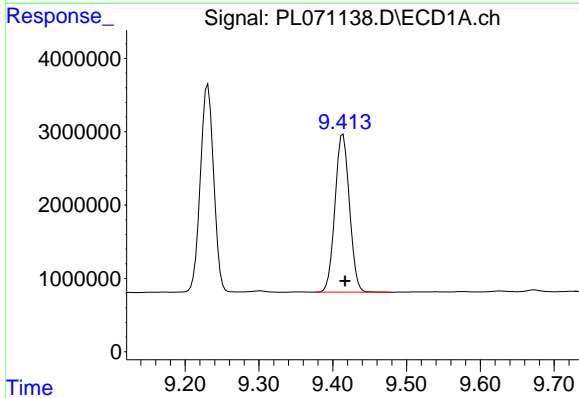
R.T.: 9.231 min
 Delta R.T.: -0.001 min
 Response: 35455835
 Conc: 49.58 ng/ml

Instrument :
 ECD_L
 ClientSampleId :



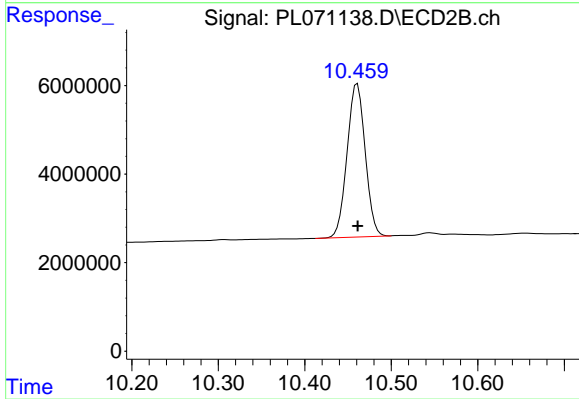
#21 Endrin ketone

R.T.: 9.996 min
 Delta R.T.: 0.000 min
 Response: 69026018
 Conc: 48.09 ng/ml



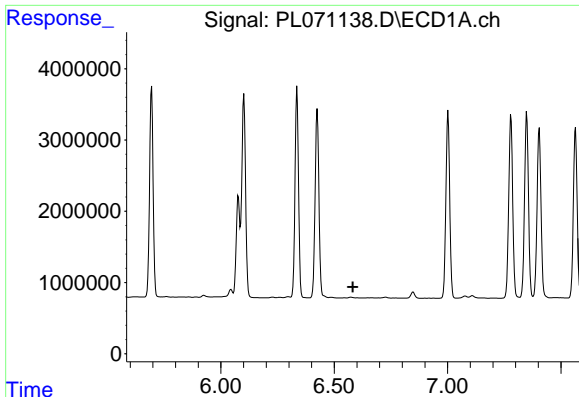
#22 Mirex

R.T.: 9.414 min
 Delta R.T.: -0.003 min
 Response: 29376292
 Conc: 47.83 ng/ml



#22 Mirex

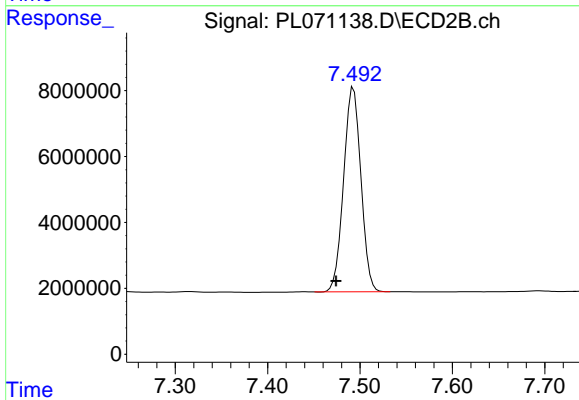
R.T.: 10.461 min
 Delta R.T.: 0.000 min
 Response: 50310744
 Conc: 48.30 ng/ml



#24 Chlordane-2

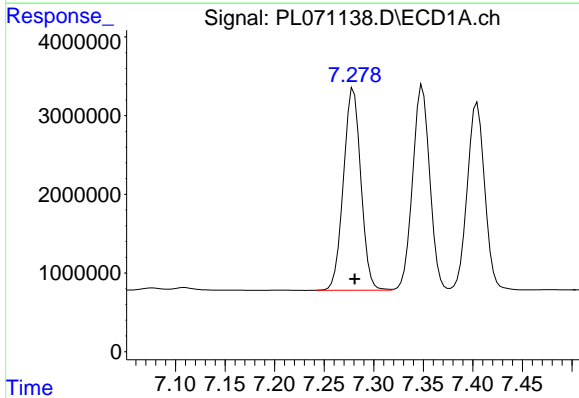
R.T.: 0.000 min
 Exp R.T.: 6.582 min
 Response: 0
 Conc: N.D.

Instrument :
 ECD_L
 ClientSampleId :



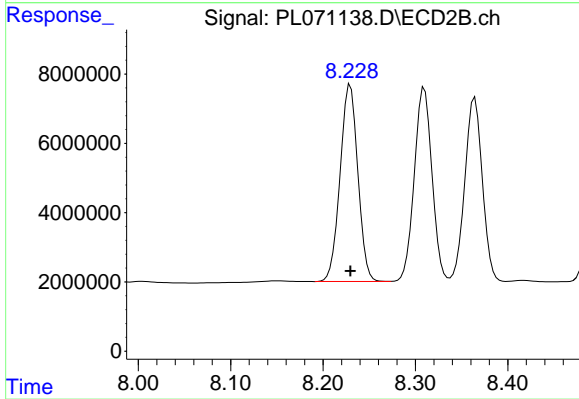
#24 Chlordane-2

R.T.: 7.493 min
 Delta R.T.: 0.019 min
 Response: 80729543
 Conc: 1539.03 ng/ml



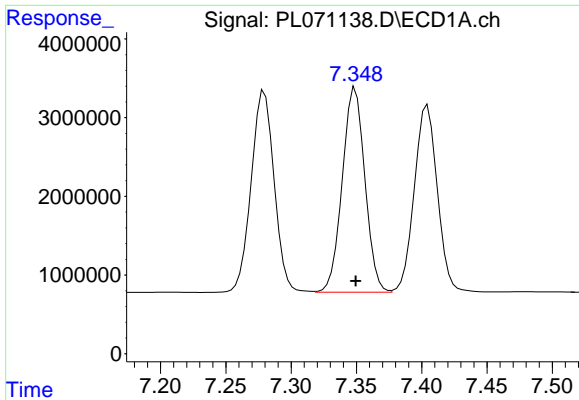
#25 Chlordane-3

R.T.: 7.280 min
 Delta R.T.: -0.001 min
 Response: 31407494
 Conc: 514.43 ng/ml



#25 Chlordane-3

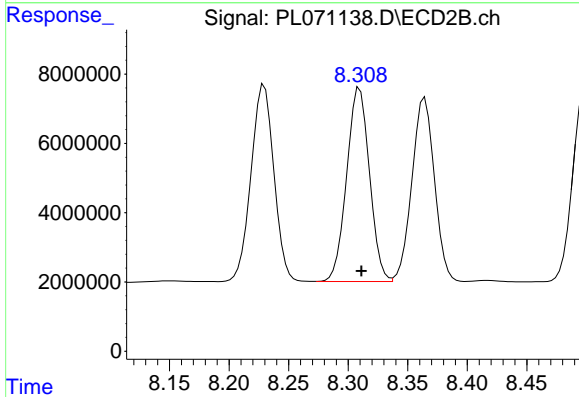
R.T.: 8.230 min
 Delta R.T.: 0.000 min
 Response: 76116419
 Conc: 376.58 ng/ml



#26 Chlordane-4

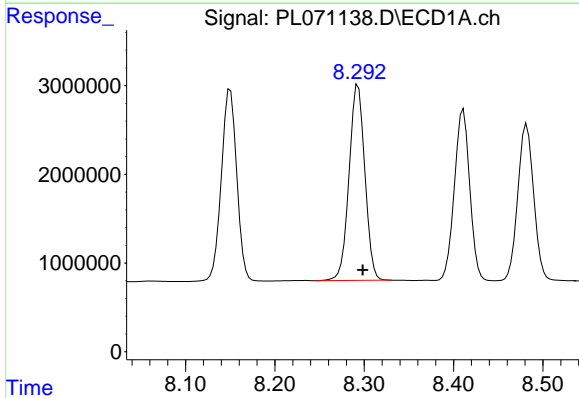
R.T.: 7.349 min
 Delta R.T.: 0.000 min
 Response: 31394807
 Conc: 478.21 ng/ml

Instrument :
 ECD_L
 ClientSampleId :



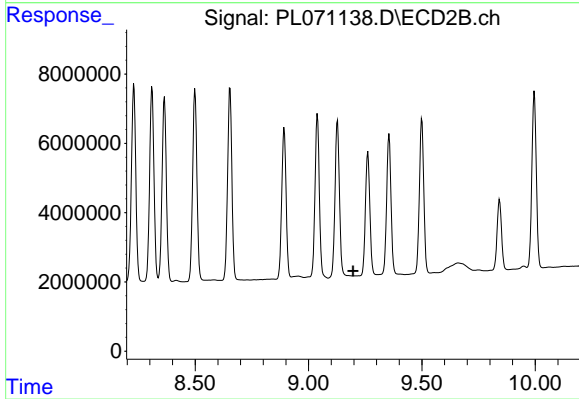
#26 Chlordane-4

R.T.: 8.310 min
 Delta R.T.: -0.002 min
 Response: 74616188
 Conc: 307.48 ng/ml



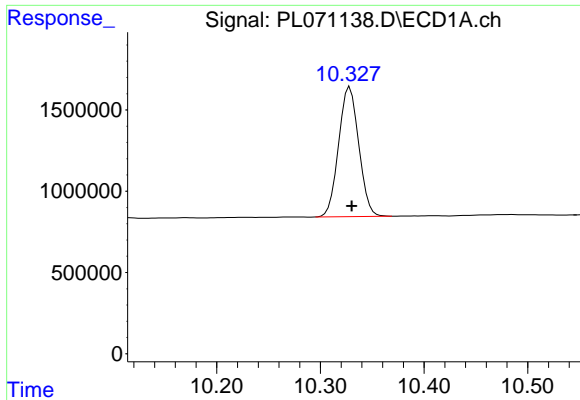
#27 Chlordane-5

R.T.: 8.293 min
 Delta R.T.: -0.005 min
 Response: 27145595
 Conc: 1214.14 ng/ml



#27 Chlordane-5

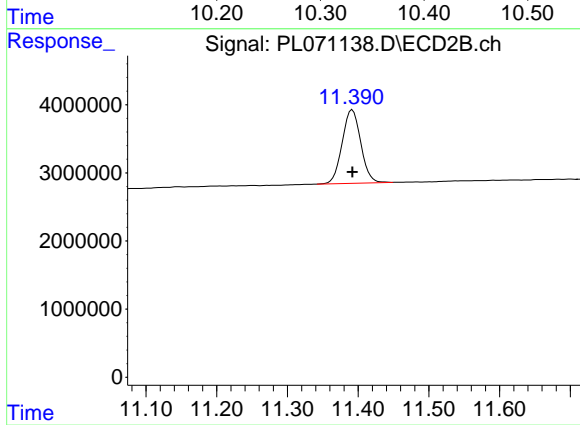
R.T.: 0.000 min
 Exp R.T.: 9.197 min
 Response: 0
 Conc: N.D.



#28 Decachlorobiphenyl

R.T.: 10.328 min
Delta R.T.: -0.002 min
Response: 10791513
Conc: 15.79 ng/ml

Instrument :
ECD_L
ClientSampleId :



#28 Decachlorobiphenyl

R.T.: 11.392 min
Delta R.T.: 0.000 min
Response: 19796352
Conc: 14.80 ng/ml