

Data Path : Z:\pestpcbsrv\HPCHEM1\ECD_L\Data\PL112519\
 Data File : PL054599.D
 Signal(s) : Signal #1: ECD1A.ch Signal #2: ECD2B.ch
 Acq On : 25 Nov 2019 15:14
 Operator : SG\AJ
 Sample : K5999-05MS
 Misc :
 ALS Vial : 12 Sample Multiplier: 1

Instrument :
 ECD_L
 ClientSampleId :
 IDLEWILD-BH-05MS

Integration File signal 1: autoint1.e
 Integration File signal 2: autoint2.e
 Quant Time: Nov 26 00:55:12 2019
 Quant Method : Z:\pestpcbsrv\HPCHEM1\ECD_L\methods\PL111819.M
 Quant Title : GC Extractables
 QLast Update : Tue Nov 19 01:04:14 2019
 Response via : Initial Calibration
 Integrator: ChemStation

Volume Inj. : 1 µl
 Signal #1 Phase : ZB-MR2 Signal #2 Phase: ZB-MR1
 Signal #1 Info : 30M x 0.32mm x0.2 Signal #2 Info : 30M x 0.32mm x0.5µm

Compound	RT#1	RT#2	Resp#1	Resp#2	ng/ml	ng/ml

System Monitoring Compounds						
1) SA Tetrachlo...	3.538	4.052	186.0E6	43611692	17.890	17.901
28) SA Decachlor...	8.320	9.154	87940484	22279732	9.936	9.215
Target Compounds						
2) A alpha-BHC	3.982	4.444	999.1E6	195.6E6	58.649	58.089
3) MA gamma-BHC...	4.268	4.730	907.5E6	180.1E6	60.403	58.567
4) MA Heptachlor	4.574	5.240	921.3E6	165.1E6	60.168	57.457
5) MB Aldrin	4.825	5.545	846.4E6	153.8E6	60.407	58.253
6) B beta-BHC	4.518	4.900	376.3E6	80486403	58.534	53.719
7) B delta-BHC	4.727	5.118	824.0E6	137.7E6	58.833	54.682
8) B Heptachlo...	5.271	5.932	883.7E6	136.7E6	68.419	57.530
9) A Endosulfan I	5.613	6.290	774.6E6	133.0E6	65.387	56.715
10) B gamma-Chl...	5.499	6.166	883.9E6	141.2E6	68.845	56.754
11) B alpha-Chl...	5.558	6.239	818.0E6	142.5E6	65.180	57.257
12) B 4,4'-DDE	5.721	6.395	742.8E6	137.4E6	64.222	57.529
13) MA Dieldrin	5.857	6.547	823.5E6	146.0E6	67.336	60.289
14) MA Endrin	6.116	6.765	660.6E6	116.3E6	59.801	54.854
15) B Endosulfa...	6.388	6.975	605.5E6	123.0E6	57.810	56.593
16) A 4,4'-DDD	6.238	6.887	505.3E6	106.9E6	61.266	60.415
17) MA 4,4'-DDT	6.480	7.187	565.6E6	111.4E6	62.385	56.776
18) B Endrin al...	6.557	7.100	487.1E6	104.1E6	56.880	55.008
19) B Endosulfa...	6.771	7.324	528.7E6	114.4E6	56.456	55.383
20) A Methoxychlor	7.026	7.647	272.3E6	60208489	59.489	53.957
21) B Endrin ke...	7.265	7.798f	569.5E6	117.2E6	56.695	51.753
22) Mirex	7.457	8.256	450.5E6	95034156	59.153	56.103
24) Chlordane-2	0.000	5.496	0	1690876	N.D.	17.836 #
25) Chlordane-3	5.499	6.166	883.9E6	141.2E6	717.951	423.900 #
26) Chlordane-4	5.558	6.239	818.0E6	142.5E6	806.851	351.797 #
27) Chlordane-5	6.388	7.019f	605.5E6	1100153	1641.673	15.158 #

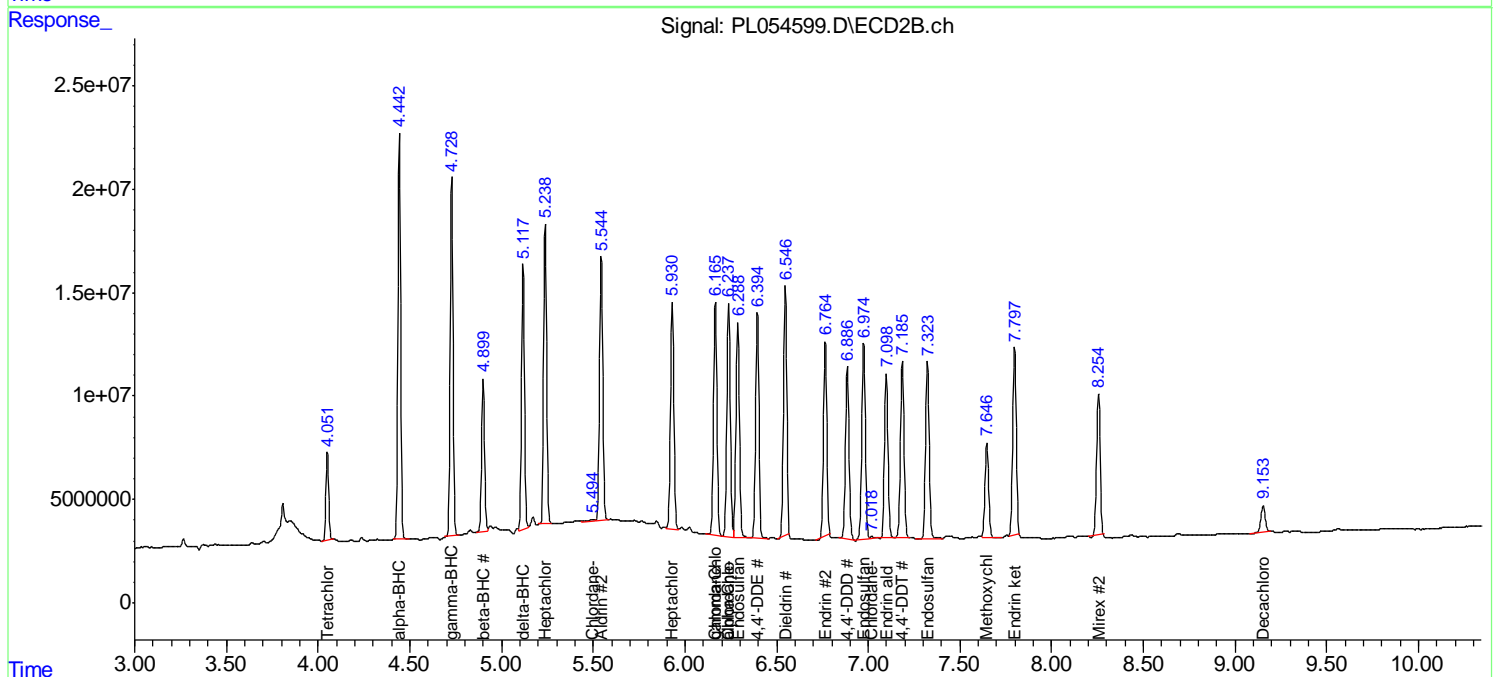
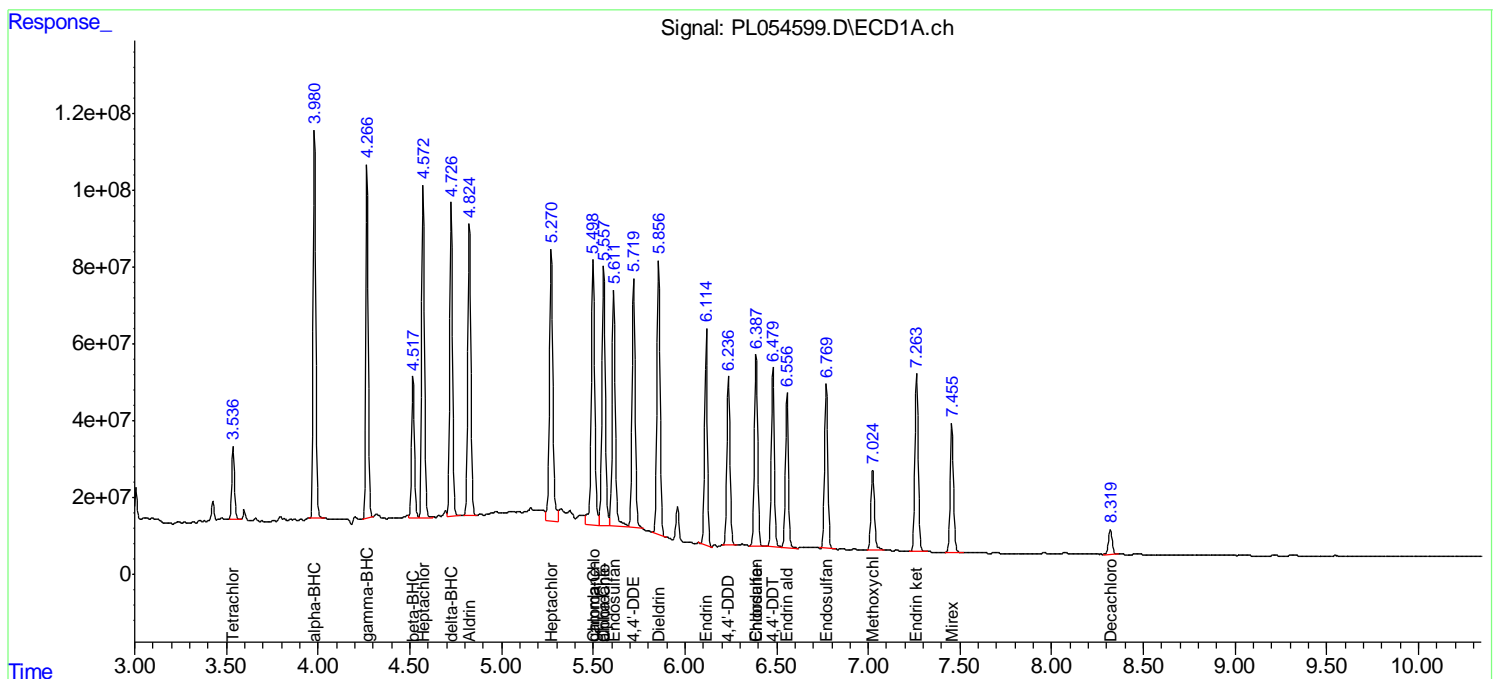
(f)=RT Delta > 1/2 Window (#)=Amounts differ by > 25% (m)=manual int.

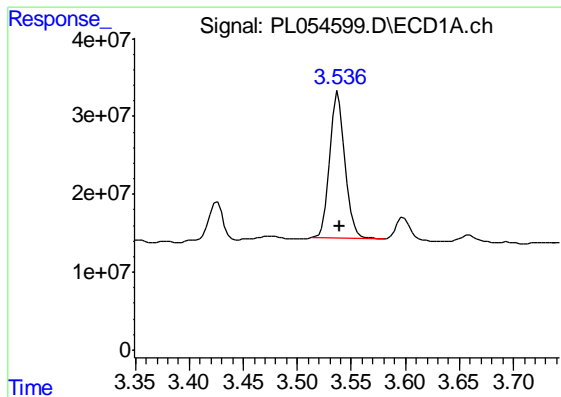
Data Path : Z:\pestpcbsrv\HPCHEM1\ECD_L\Data\PL112519\
 Data File : PL054599.D
 Signal(s) : Signal #1: ECD1A.ch Signal #2: ECD2B.ch
 Acq On : 25 Nov 2019 15:14
 Operator : SG\AJ
 Sample : K5999-05MS
 Misc :
 ALS Vial : 12 Sample Multiplier: 1

Instrument :
 ECD_L
Client Sampled :
 IDLEWILD-BH-05MS

Integration File signal 1: autoint1.e
 Integration File signal 2: autoint2.e
 Quant Time: Nov 26 00:55:12 2019
 Quant Method : Z:\pestpcbsrv\HPCHEM1\ECD_L\methods\PL111819.M
 Quant Title : GC Extractables
 QLast Update : Tue Nov 19 01:04:14 2019
 Response via : Initial Calibration
 Integrator: ChemStation

Volume Inj. : 1 µl
 Signal #1 Phase : ZB-MR2 Signal #2 Phase: ZB-MR1
 Signal #1 Info : 30M x 0.32mm x0.2 Signal #2 Info : 30M x 0.32mm x0.5µm

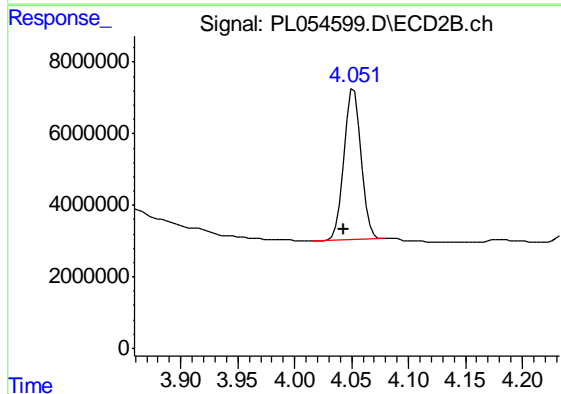




#1 Tetrachloro-m-xylene

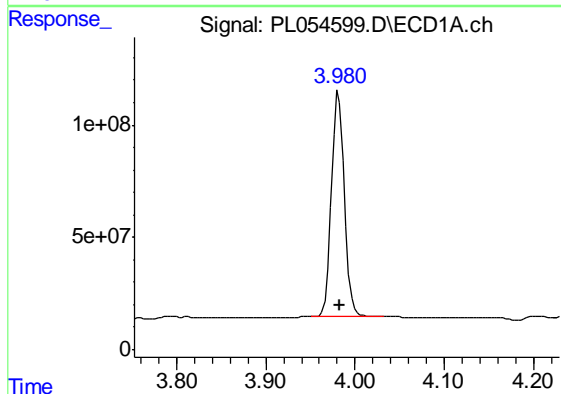
R.T.: 3.538 min
 Delta R.T.: -0.001 min
 Response: 186008586
 Conc: 17.89 ng/ml

Instrument :
 ECD_L
 ClientSampleId :
 IDLEWILD-BH-05MS



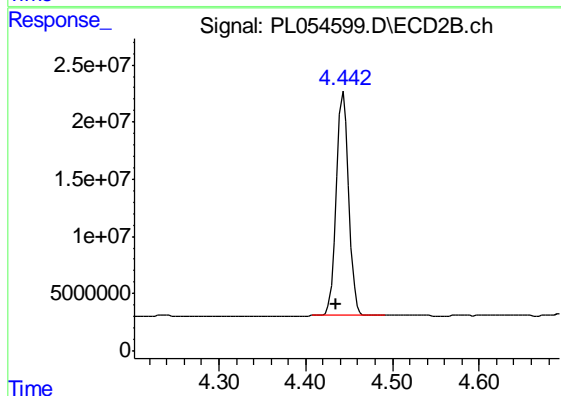
#1 Tetrachloro-m-xylene

R.T.: 4.052 min
 Delta R.T.: 0.009 min
 Response: 43611692
 Conc: 17.90 ng/ml



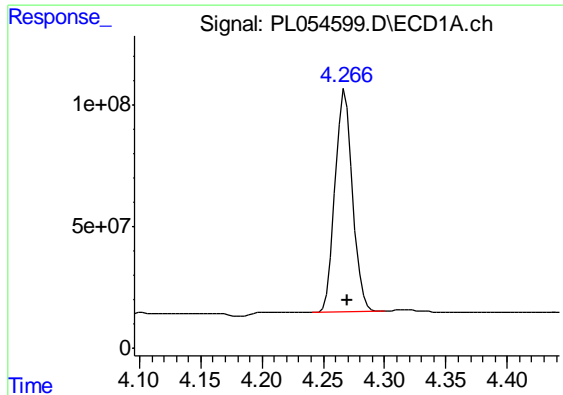
#2 alpha-BHC

R.T.: 3.982 min
 Delta R.T.: 0.000 min
 Response: 999141248
 Conc: 58.65 ng/ml



#2 alpha-BHC

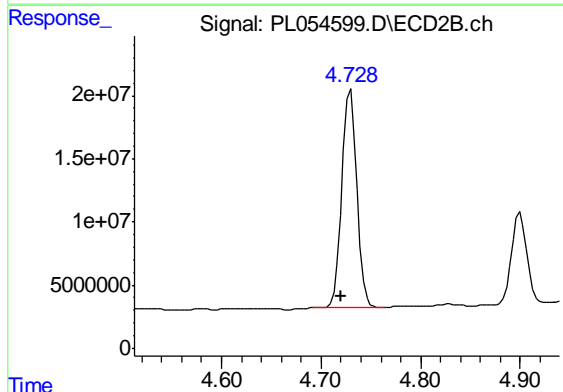
R.T.: 4.444 min
 Delta R.T.: 0.009 min
 Response: 195587376
 Conc: 58.09 ng/ml



#3 gamma-BHC (Lindane)

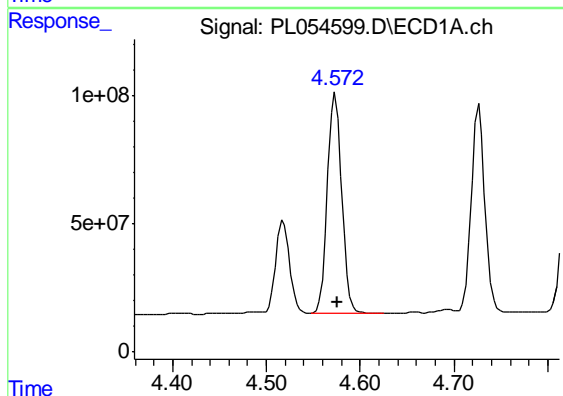
R.T.: 4.268 min
 Delta R.T.: -0.002 min
 Response: 907532593
 Conc: 60.40 ng/ml

Instrument :
 ECD_L
 ClientSampleId :
 IDLEWILD-BH-05MS



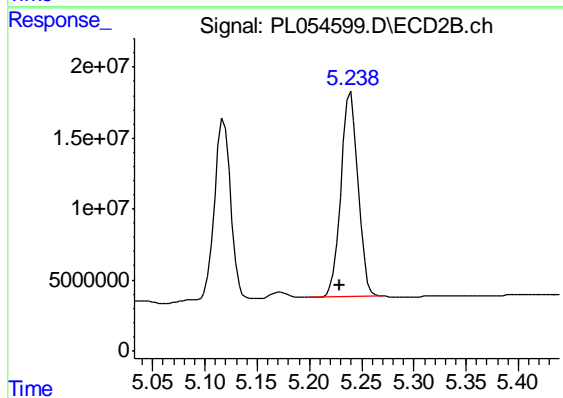
#3 gamma-BHC (Lindane)

R.T.: 4.730 min
 Delta R.T.: 0.009 min
 Response: 180081730
 Conc: 58.57 ng/ml



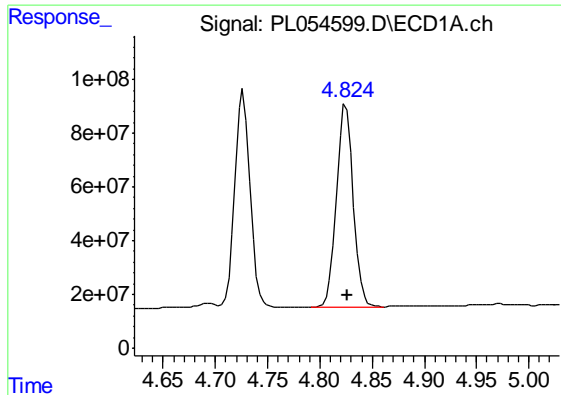
#4 Heptachlor

R.T.: 4.574 min
 Delta R.T.: -0.001 min
 Response: 921347580
 Conc: 60.17 ng/ml



#4 Heptachlor

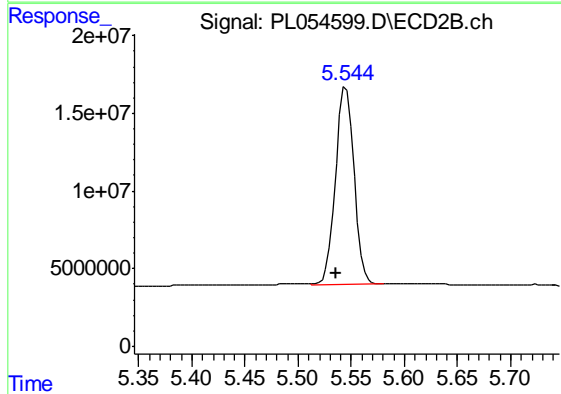
R.T.: 5.240 min
 Delta R.T.: 0.010 min
 Response: 165114033
 Conc: 57.46 ng/ml



#5 Aldrin

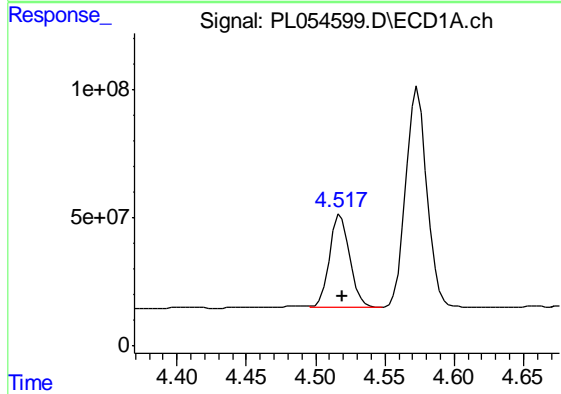
R.T.: 4.825 min
 Delta R.T.: -0.002 min
 Response: 846449936
 Conc: 60.41 ng/ml

Instrument :
 ECD_L
 ClientSampleId :
 IDLEWILD-BH-05MS



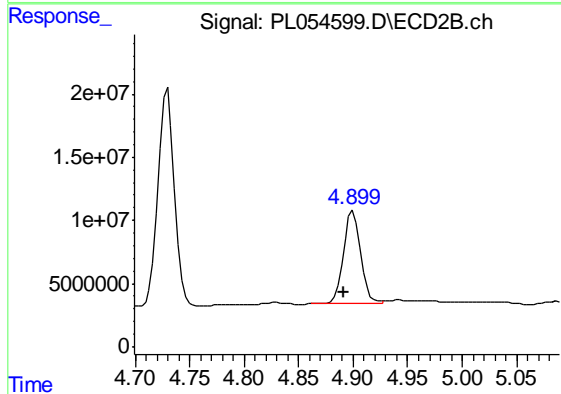
#5 Aldrin

R.T.: 5.545 min
 Delta R.T.: 0.010 min
 Response: 153757445
 Conc: 58.25 ng/ml



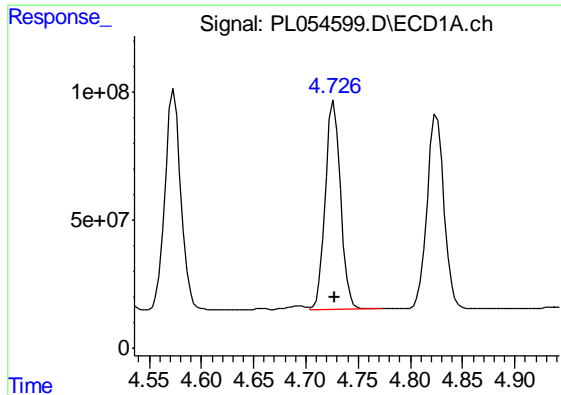
#6 beta-BHC

R.T.: 4.518 min
 Delta R.T.: -0.001 min
 Response: 376314097
 Conc: 58.53 ng/ml



#6 beta-BHC

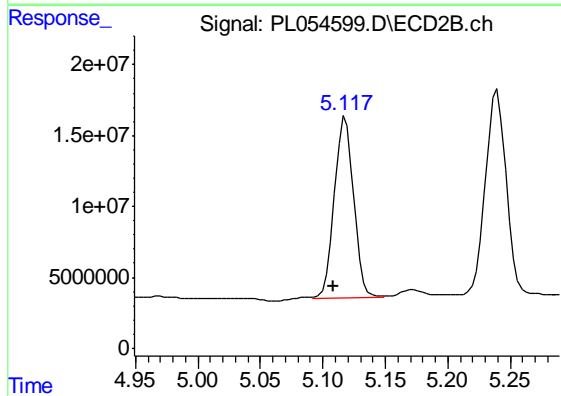
R.T.: 4.900 min
 Delta R.T.: 0.009 min
 Response: 80486403
 Conc: 53.72 ng/ml



#7 delta-BHC

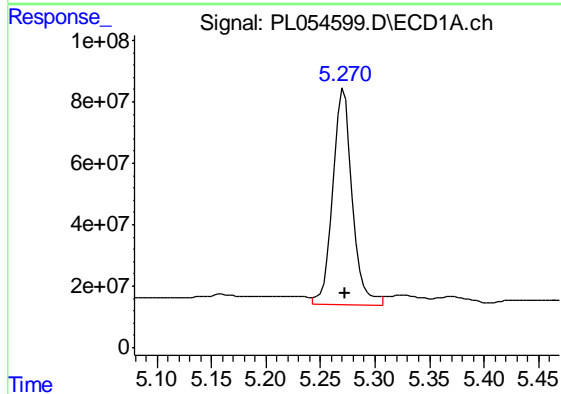
R.T.: 4.727 min
 Delta R.T.: -0.001 min
 Response: 823998297
 Conc: 58.83 ng/ml

Instrument :
 ECD_L
 ClientSampleId :
 IDLEWILD-BH-05MS



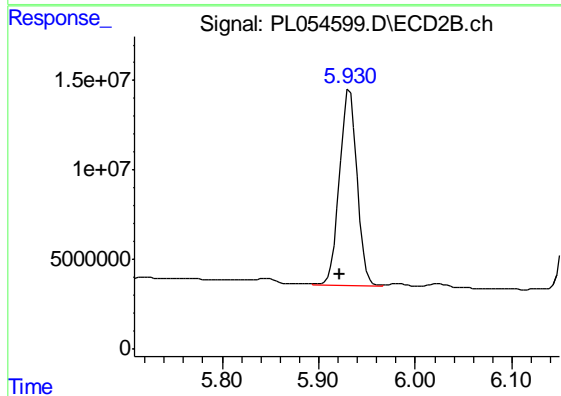
#7 delta-BHC

R.T.: 5.118 min
 Delta R.T.: 0.010 min
 Response: 137746766
 Conc: 54.68 ng/ml



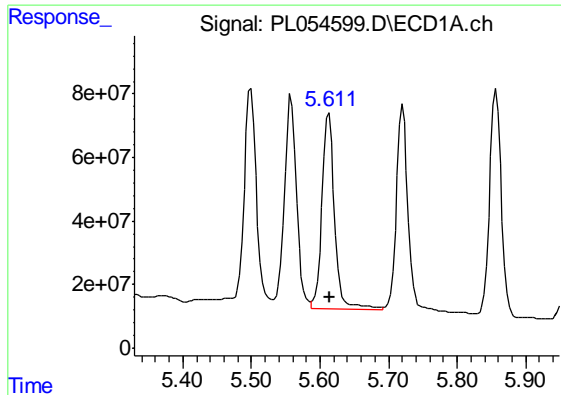
#8 Heptachlor epoxide

R.T.: 5.271 min
 Delta R.T.: -0.001 min
 Response: 883667439
 Conc: 68.42 ng/ml



#8 Heptachlor epoxide

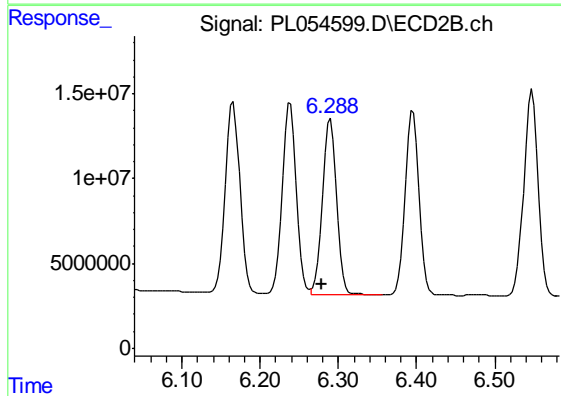
R.T.: 5.932 min
 Delta R.T.: 0.010 min
 Response: 136728466
 Conc: 57.53 ng/ml



#9 Endosulfan I

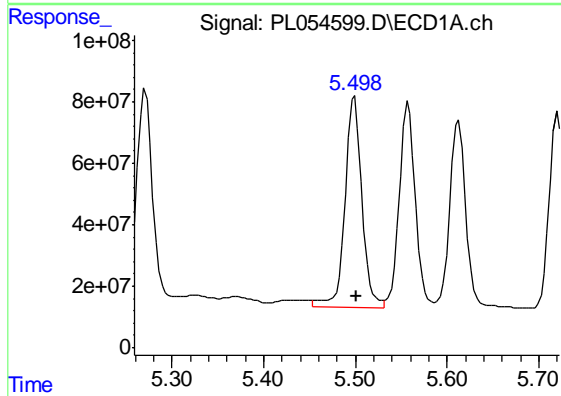
R.T.: 5.613 min
 Delta R.T.: -0.002 min
 Response: 774573503
 Conc: 65.39 ng/ml

Instrument :
 ECD_L
 ClientSampleId :
 IDLEWILD-BH-05MS



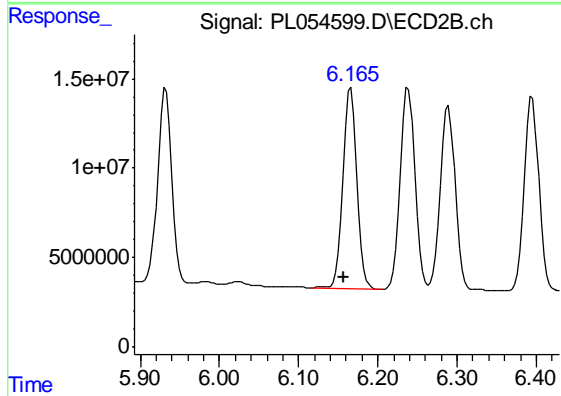
#9 Endosulfan I

R.T.: 6.290 min
 Delta R.T.: 0.010 min
 Response: 132962679
 Conc: 56.72 ng/ml



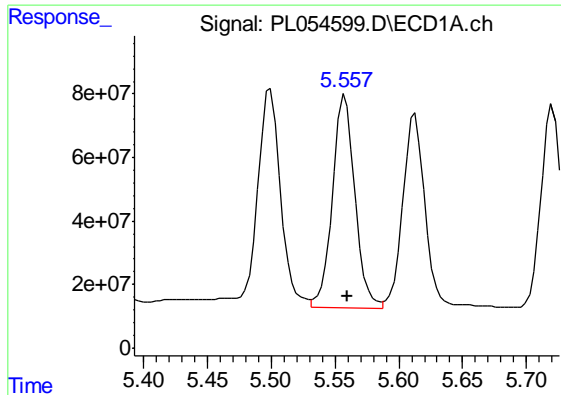
#10 gamma-Chlordane

R.T.: 5.499 min
 Delta R.T.: -0.002 min
 Response: 883945842
 Conc: 68.85 ng/ml



#10 gamma-Chlordane

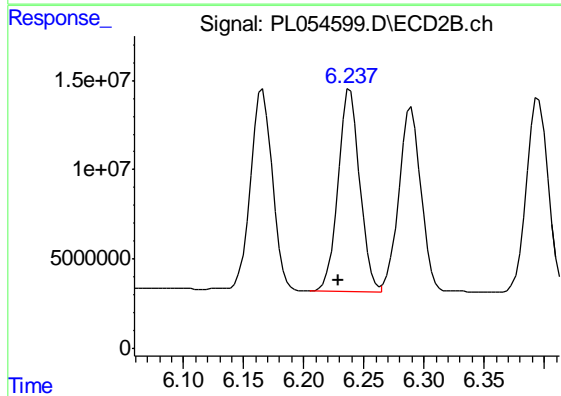
R.T.: 6.166 min
 Delta R.T.: 0.010 min
 Response: 141228906
 Conc: 56.75 ng/ml



#11 alpha-Chlordane

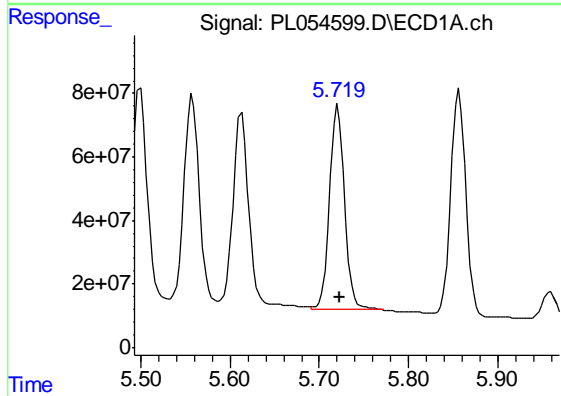
R.T.: 5.558 min
 Delta R.T.: -0.001 min
 Response: 817973640
 Conc: 65.18 ng/ml

Instrument :
 ECD_L
 ClientSampleId :
 IDLEWILD-BH-05MS



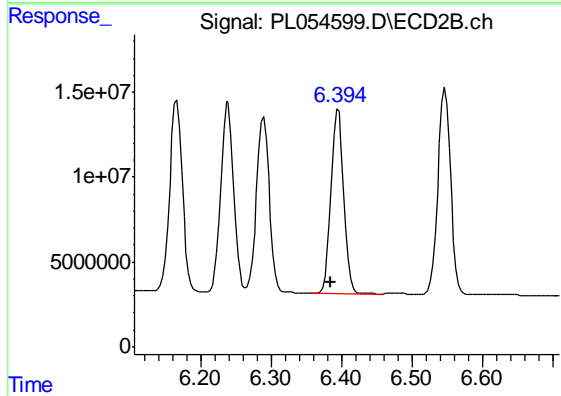
#11 alpha-Chlordane

R.T.: 6.239 min
 Delta R.T.: 0.010 min
 Response: 142517520
 Conc: 57.26 ng/ml



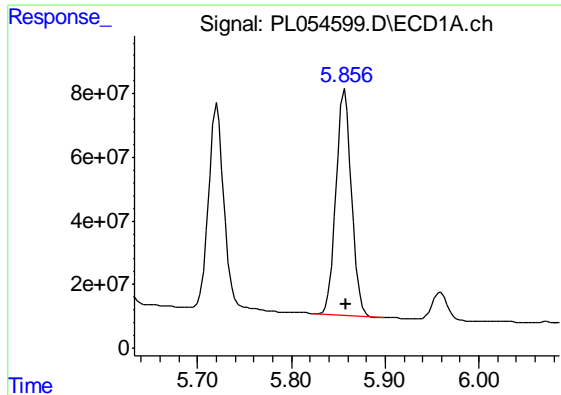
#12 4,4'-DDE

R.T.: 5.721 min
 Delta R.T.: -0.002 min
 Response: 742829572
 Conc: 64.22 ng/ml



#12 4,4'-DDE

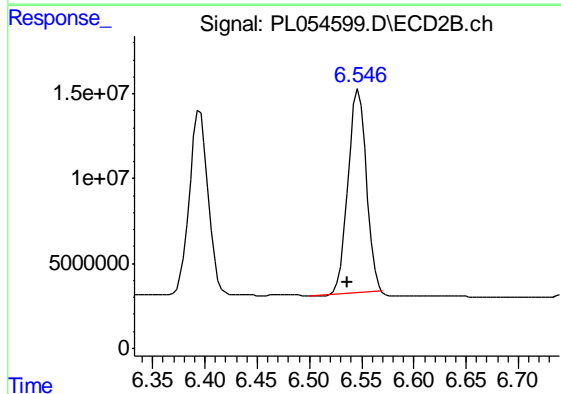
R.T.: 6.395 min
 Delta R.T.: 0.010 min
 Response: 137426141
 Conc: 57.53 ng/ml



#13 Dieldrin

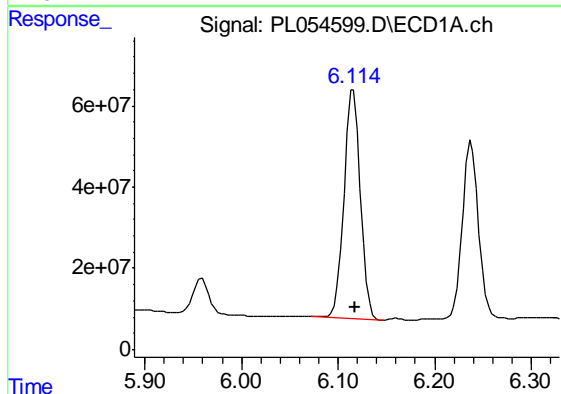
R.T.: 5.857 min
 Delta R.T.: -0.002 min
 Response: 823467166
 Conc: 67.34 ng/ml

Instrument :
 ECD_L
 ClientSampleId :
 IDLEWILD-BH-05MS



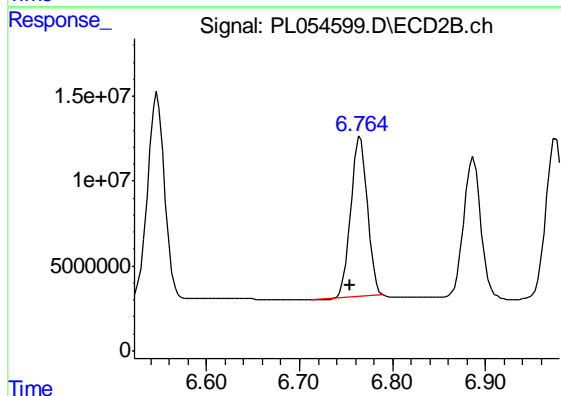
#13 Dieldrin

R.T.: 6.547 min
 Delta R.T.: 0.011 min
 Response: 146006330
 Conc: 60.29 ng/ml



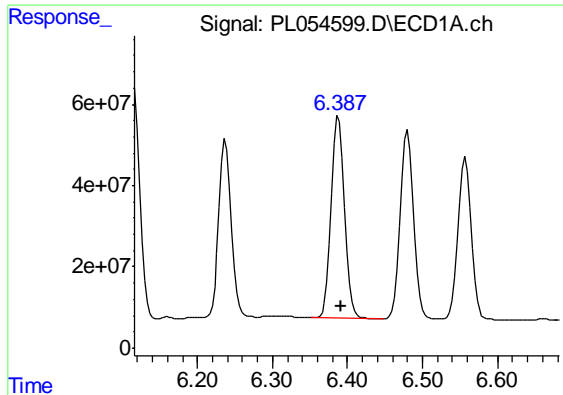
#14 Endrin

R.T.: 6.116 min
 Delta R.T.: -0.002 min
 Response: 660571040
 Conc: 59.80 ng/ml



#14 Endrin

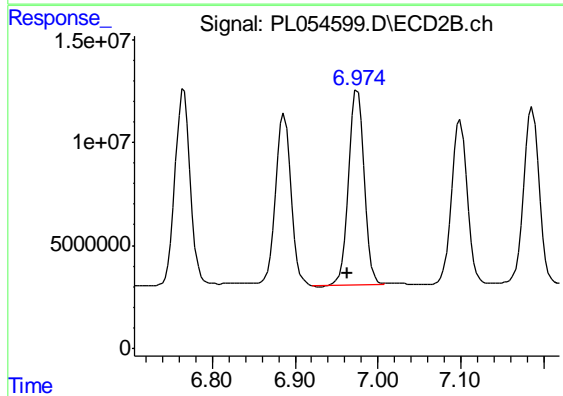
R.T.: 6.765 min
 Delta R.T.: 0.011 min
 Response: 116272231
 Conc: 54.85 ng/ml



#15 Endosulfan II

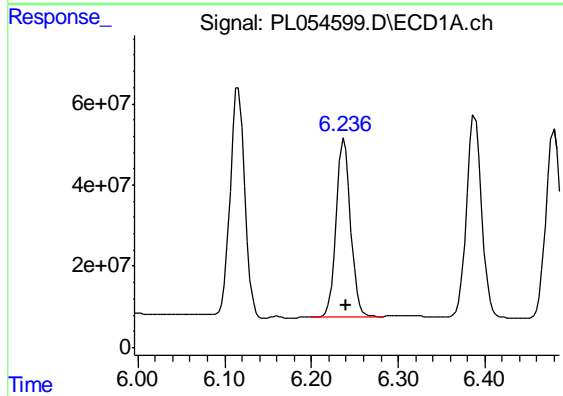
R.T.: 6.388 min
Delta R.T.: -0.003 min
Response: 605508315
Conc: 57.81 ng/ml

Instrument :
ECD_L
ClientSampleId :
IDLEWILD-BH-05MS



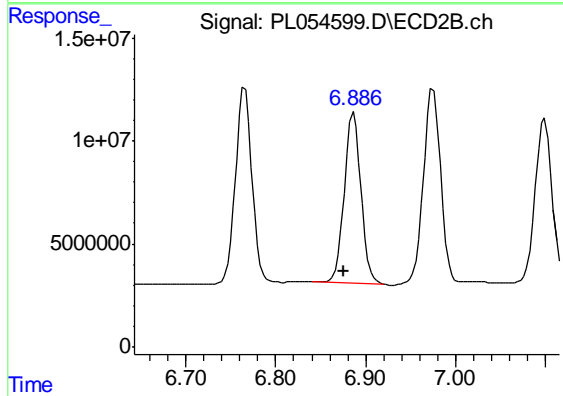
#15 Endosulfan II

R.T.: 6.975 min
Delta R.T.: 0.012 min
Response: 123026661
Conc: 56.59 ng/ml



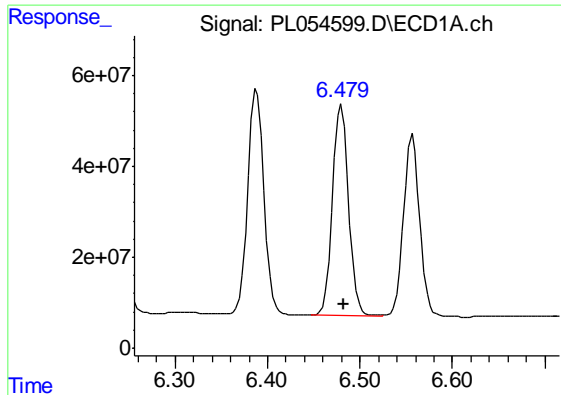
#16 4,4'-DDD

R.T.: 6.238 min
Delta R.T.: -0.003 min
Response: 505340330
Conc: 61.27 ng/ml



#16 4,4'-DDD

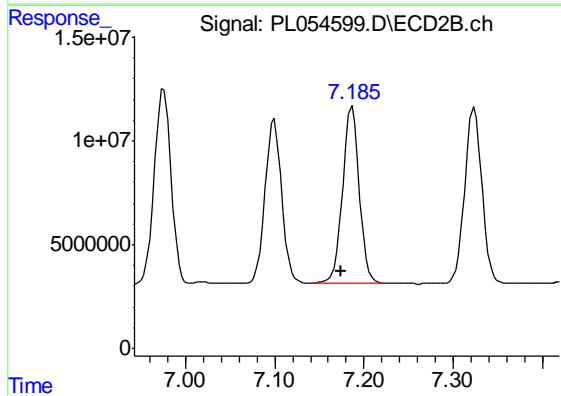
R.T.: 6.887 min
Delta R.T.: 0.012 min
Response: 106912939
Conc: 60.42 ng/ml



#17 4,4'-DDT

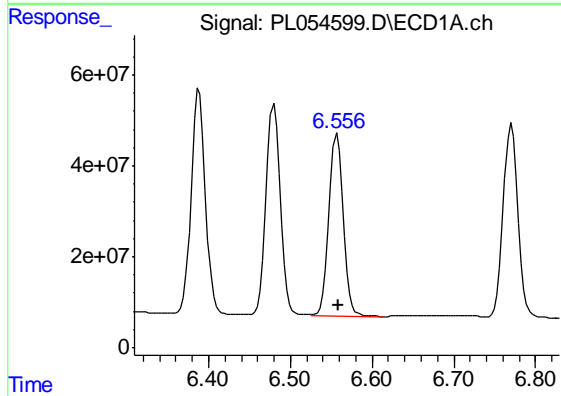
R.T.: 6.480 min
 Delta R.T.: -0.003 min
 Response: 565611603
 Conc: 62.39 ng/ml

Instrument :
 ECD_L
 ClientSampleId :
 IDLEWILD-BH-05MS



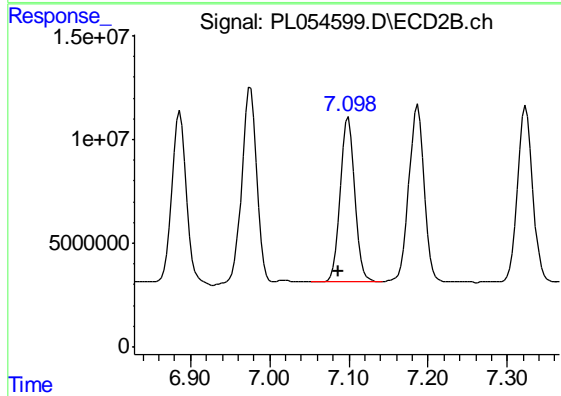
#17 4,4'-DDT

R.T.: 7.187 min
 Delta R.T.: 0.013 min
 Response: 111372279
 Conc: 56.78 ng/ml



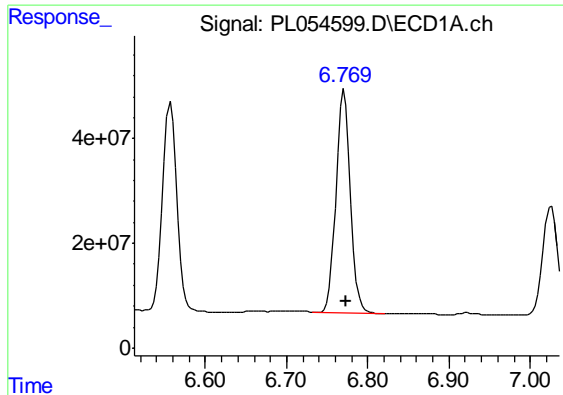
#18 Endrin aldehyde

R.T.: 6.557 min
 Delta R.T.: -0.002 min
 Response: 487138604
 Conc: 56.88 ng/ml



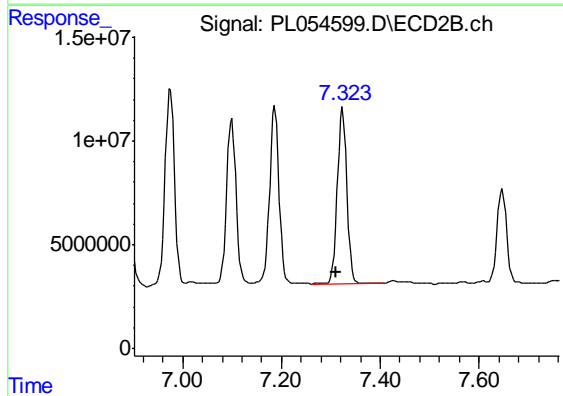
#18 Endrin aldehyde

R.T.: 7.100 min
 Delta R.T.: 0.012 min
 Response: 104054396
 Conc: 55.01 ng/ml

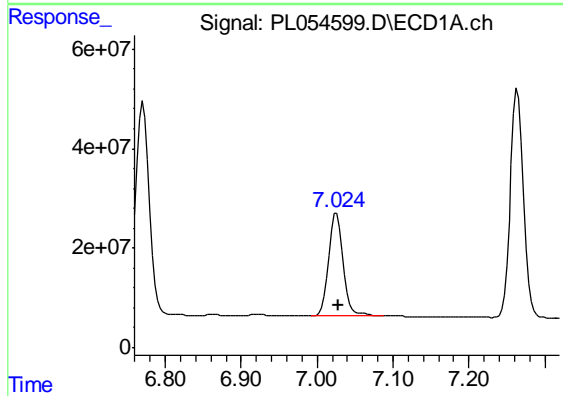


#19 Endosulfan Sulfate
 R.T.: 6.771 min
 Delta R.T.: -0.002 min
 Response: 528697584
 Conc: 56.46 ng/ml

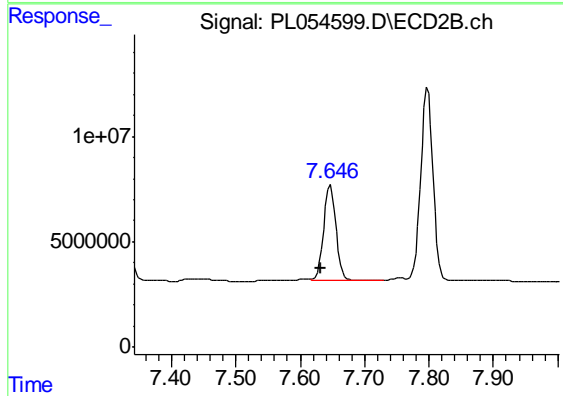
Instrument :
 ECD_L
 ClientSampleId :
 IDLEWILD-BH-05MS



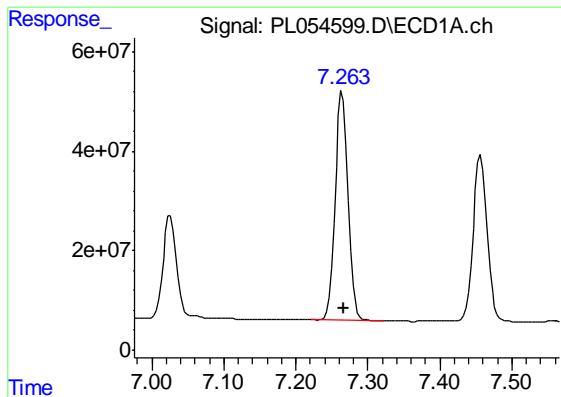
#19 Endosulfan Sulfate
 R.T.: 7.324 min
 Delta R.T.: 0.014 min
 Response: 114389475
 Conc: 55.38 ng/ml



#20 Methoxychlor
 R.T.: 7.026 min
 Delta R.T.: -0.002 min
 Response: 272268419
 Conc: 59.49 ng/ml



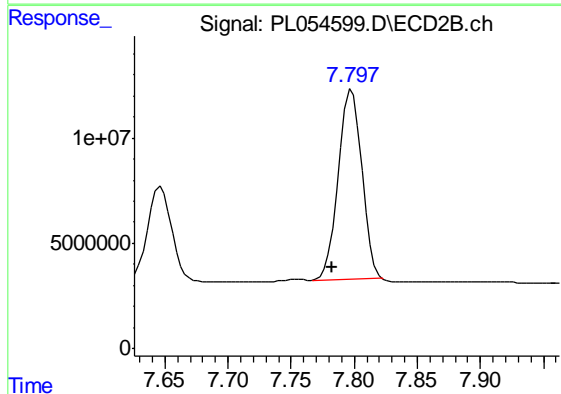
#20 Methoxychlor
 R.T.: 7.647 min
 Delta R.T.: 0.015 min
 Response: 60208489
 Conc: 53.96 ng/ml



#21 Endrin ketone

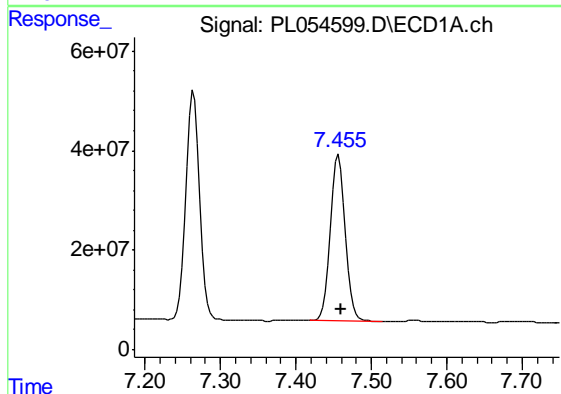
R.T.: 7.265 min
 Delta R.T.: -0.002 min
 Response: 569522592
 Conc: 56.69 ng/ml

Instrument :
 ECD_L
 ClientSampleId :
 IDLEWILD-BH-05MS



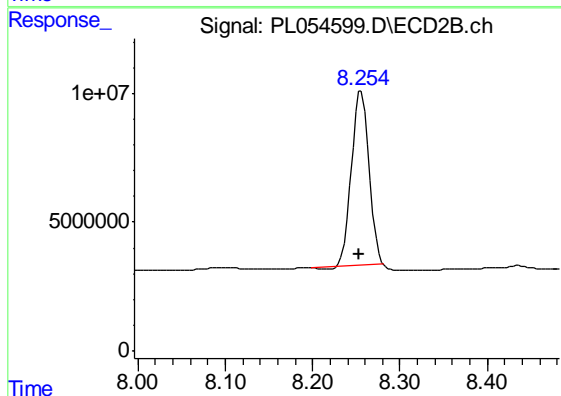
#21 Endrin ketone

R.T.: 7.798 min
 Delta R.T.: 0.016 min
 Response: 117197833
 Conc: 51.75 ng/ml



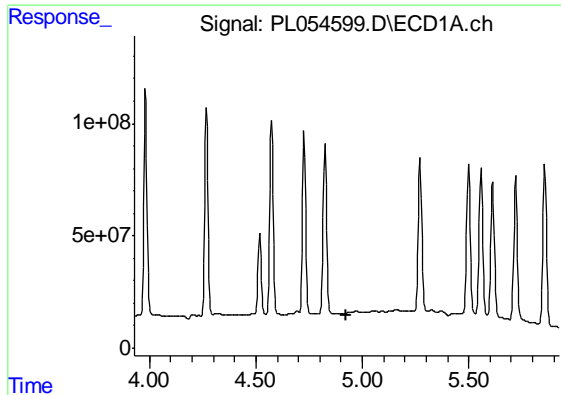
#22 Mirex

R.T.: 7.457 min
 Delta R.T.: -0.003 min
 Response: 450547196
 Conc: 59.15 ng/ml



#22 Mirex

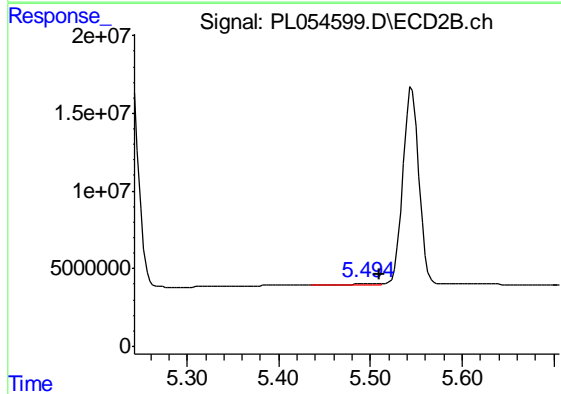
R.T.: 8.256 min
 Delta R.T.: 0.003 min
 Response: 95034156
 Conc: 56.10 ng/ml



#24 Chlordane-2

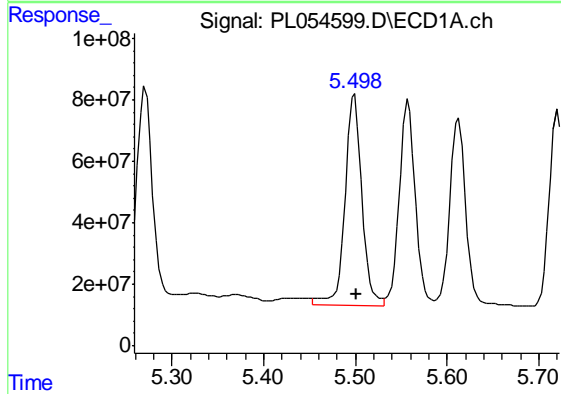
R.T.: 0.000 min
 Exp R.T. : 4.927 min
 Response: 0
 Conc: N.D.

Instrument :
 ECD_L
 ClientSampleId :
 IDLEWILD-BH-05MS



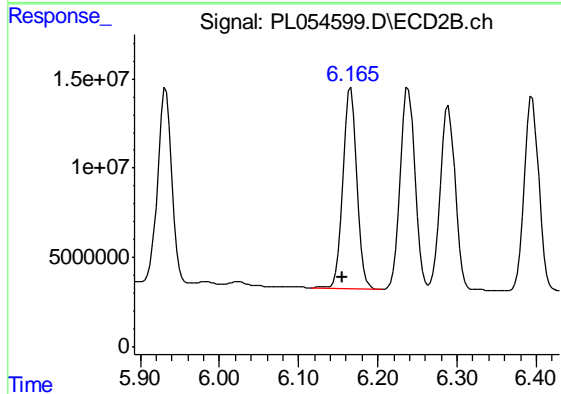
#24 Chlordane-2

R.T.: 5.496 min
 Delta R.T.: -0.014 min
 Response: 1690876
 Conc: 17.84 ng/ml



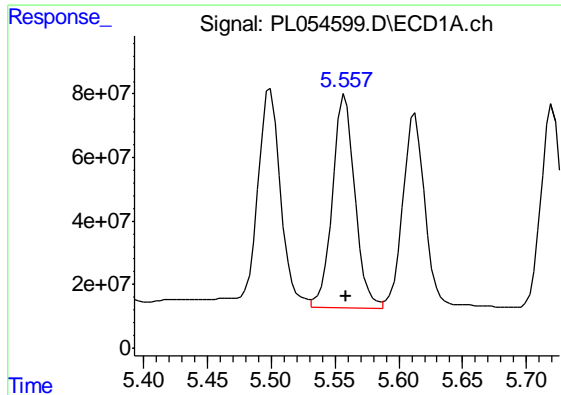
#25 Chlordane-3

R.T.: 5.499 min
 Delta R.T.: -0.003 min
 Response: 883945842
 Conc: 717.95 ng/ml



#25 Chlordane-3

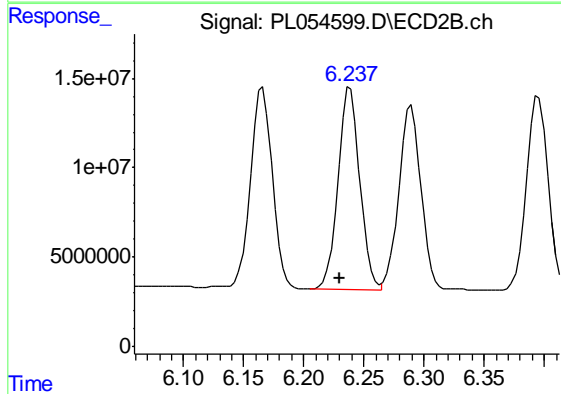
R.T.: 6.166 min
 Delta R.T.: 0.010 min
 Response: 141228906
 Conc: 423.90 ng/ml



#26 Chlordane-4

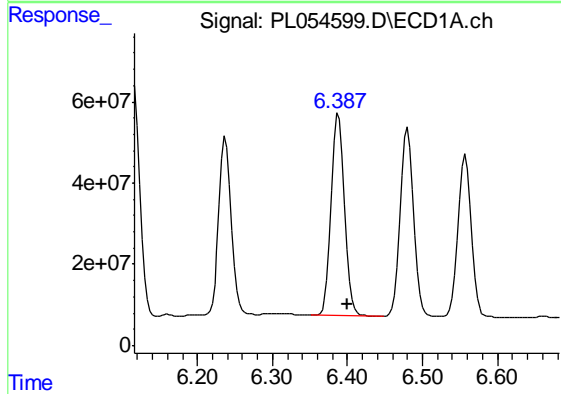
R.T.: 5.558 min
 Delta R.T.: -0.001 min
 Response: 817973640
 Conc: 806.85 ng/ml

Instrument :
 ECD_L
 ClientSampleId :
 IDLEWILD-BH-05MS



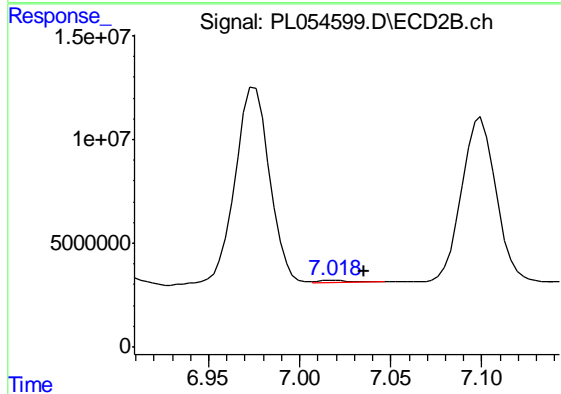
#26 Chlordane-4

R.T.: 6.239 min
 Delta R.T.: 0.008 min
 Response: 142517520
 Conc: 351.80 ng/ml



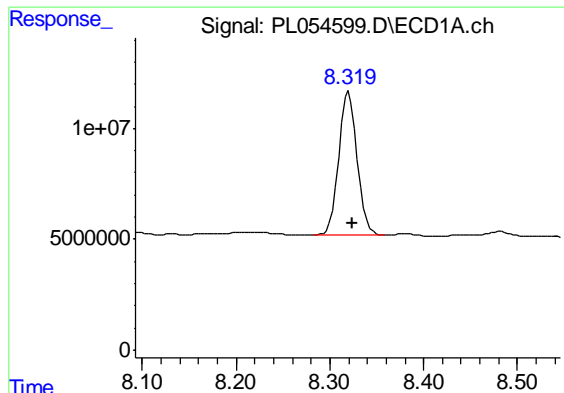
#27 Chlordane-5

R.T.: 6.388 min
 Delta R.T.: -0.012 min
 Response: 605508315
 Conc: 1641.67 ng/ml



#27 Chlordane-5

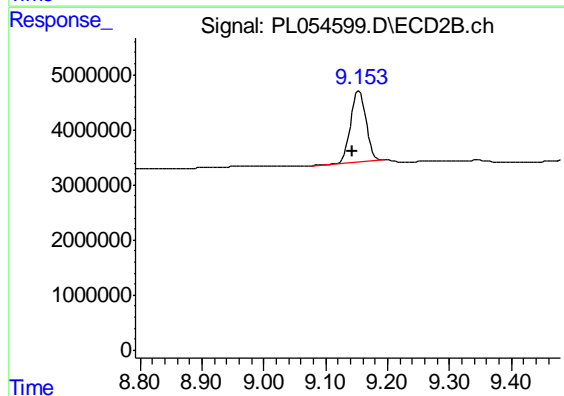
R.T.: 7.019 min
 Delta R.T.: -0.016 min
 Response: 1100153
 Conc: 15.16 ng/ml



#28 Decachlorobiphenyl

R.T.: 8.320 min
Delta R.T.: -0.003 min
Response: 87940484
Conc: 9.94 ng/ml

Instrument :
ECD_L
ClientSampleId :
IDLEWILD-BH-05MS



#28 Decachlorobiphenyl

R.T.: 9.154 min
Delta R.T.: 0.011 min
Response: 22279732
Conc: 9.21 ng/ml