

Data Path : Z:\pestpcbsrv\HPCHEM1\ECD_L\Data\PL112619\
 Data File : PL054618.D
 Signal(s) : Signal #1: ECD1A.ch Signal #2: ECD2B.ch
 Acq On : 26 Nov 2019 11:39
 Operator : SG\AJ
 Sample : PSTDICC075
 Misc :
 ALS Vial : 6 Sample Multiplier: 1

Instrument :
 ECD_L
 ClientSampleId :
 PSTDICC075

Integration File signal 1: autoint1.e
 Integration File signal 2: autoint2.e
 Quant Time: Nov 27 00:54:25 2019
 Quant Method : Z:\pestpcbsrv\HPCHEM1\ECD_L\methods\PL112619.M
 Quant Title : GC Extractables
 QLast Update : Wed Nov 27 00:43:52 2019
 Response via : Initial Calibration
 Integrator: ChemStation

Volume Inj. : 1 µl
 Signal #1 Phase : ZB-MR2 Signal #2 Phase: ZB-MR1
 Signal #1 Info : 30M x 0.32mm x0.2 Signal #2 Info : 30M x 0.32mm x0.5µm

	Compound	RT#1	RT#2	Resp#1	Resp#2	ng/ml	ng/ml

System Monitoring Compounds							
1)	SA Tetrachlo...	3.538	4.051	836.3E6	181.6E6	70.581	70.915
28)	SA Decachlor...	8.320	9.151	678.6E6	170.4E6	72.040	71.861
Target Compounds							
2)	A alpha-BHC	3.981	4.443	1398.2E6	264.2E6	71.280	72.810
3)	MA gamma-BHC...	4.267	4.729	1273.5E6	240.5E6	71.615	72.526
4)	MA Heptachlor	4.573	5.238	1292.7E6	218.4E6	71.416	72.292
5)	MB Aldrin	4.825	5.544	1217.2E6	203.6E6	72.255	72.616
6)	B beta-BHC	4.518	4.899	528.2E6	101.5E6	70.955	71.651
7)	B delta-BHC	4.726	5.117	1218.7E6	203.8E6	72.175	73.578
8)	B Heptachlo...	5.270	5.931	1112.5E6	181.7E6	71.531	72.131
9)	A Endosulfan I	5.611	6.289	1015.2E6	178.0E6	72.694	72.292
10)	B gamma-Chl...	5.498	6.165	1127.6E6	191.2E6	72.412	72.570
11)	B alpha-Chl...	5.556	6.238	1082.5E6	189.7E6	72.087	72.430
12)	B 4,4'-DDE	5.720	6.394	1003.9E6	180.8E6	72.722	73.098
13)	MA Dieldrin	5.856	6.546	1079.9E6	186.8E6	72.708	73.316
14)	MA Endrin	6.115	6.764	958.1E6	161.7E6	72.659	73.005
15)	B Endosulfa...	6.388	6.974	893.1E6	167.0E6	72.180	72.424
16)	A 4,4'-DDD	6.237	6.885	746.2E6	139.6E6	74.394	73.292
17)	MA 4,4'-DDT	6.480	7.185	819.2E6	146.6E6	74.187	73.735
18)	B Endrin al...	6.556	7.098	728.6E6	139.3E6	72.534	72.194
19)	B Endosulfa...	6.770	7.322	786.4E6	150.8E6	72.041	72.004
20)	A Methoxychlor	7.024	7.645	374.4E6	81536391	73.555	71.910
21)	B Endrin ke...	7.264	7.796	817.8E6	163.3E6	73.417	72.960
22)	Mirex	7.456	8.254	571.6E6	121.5E6	71.002	71.267

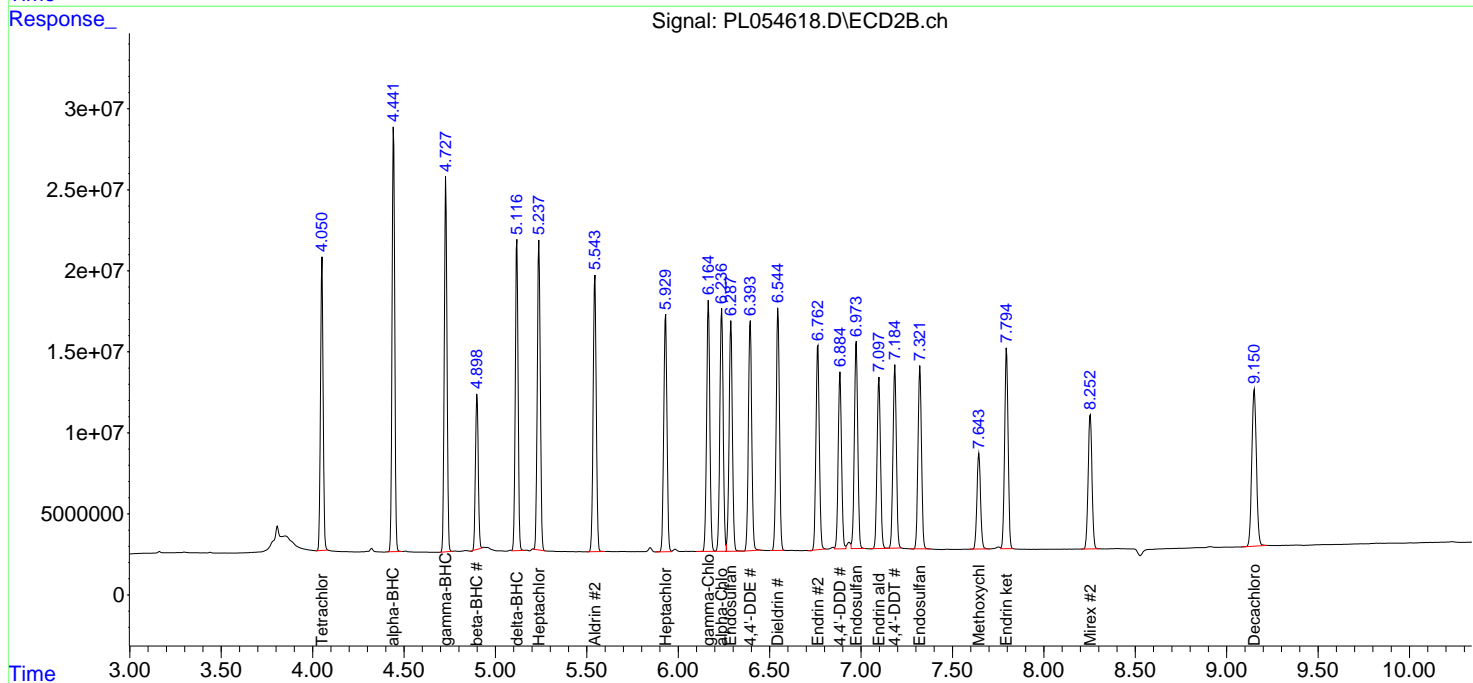
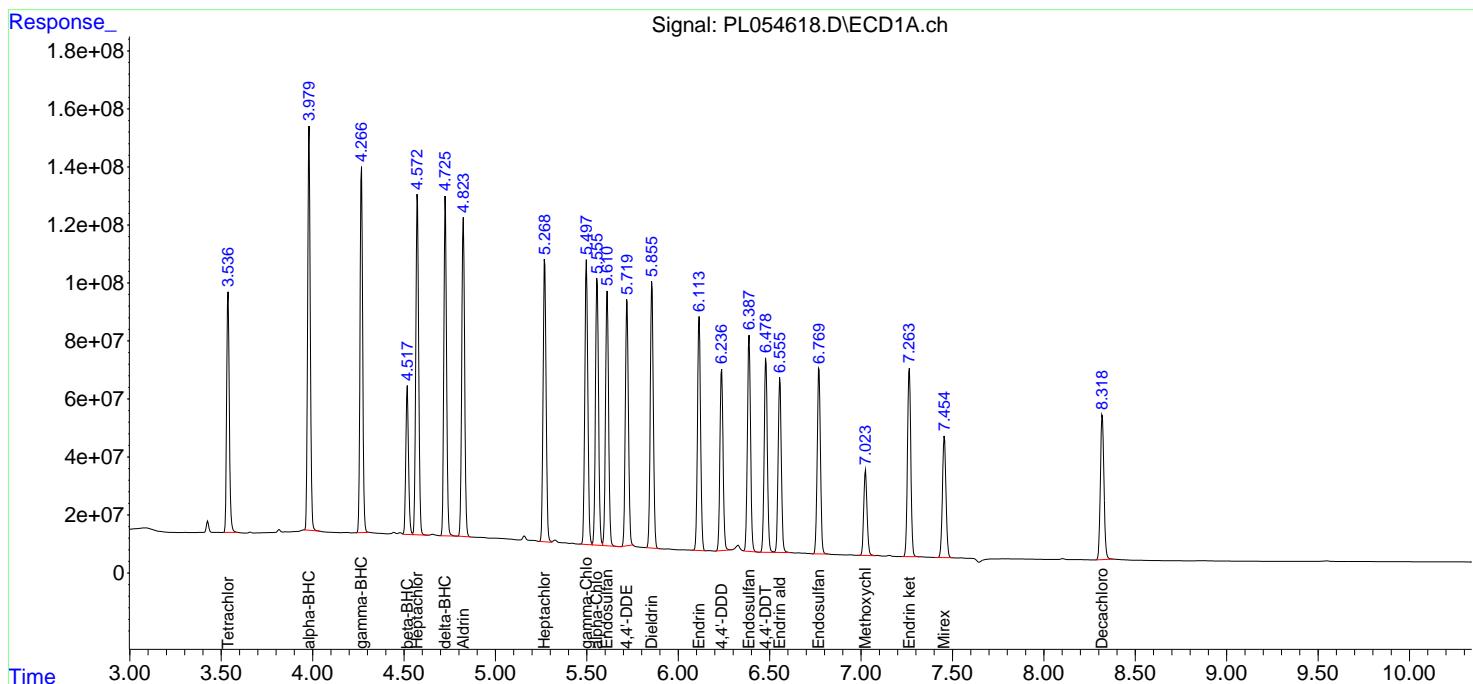
(f)=RT Delta > 1/2 Window (#)=Amounts differ by > 25% (m)=manual int.

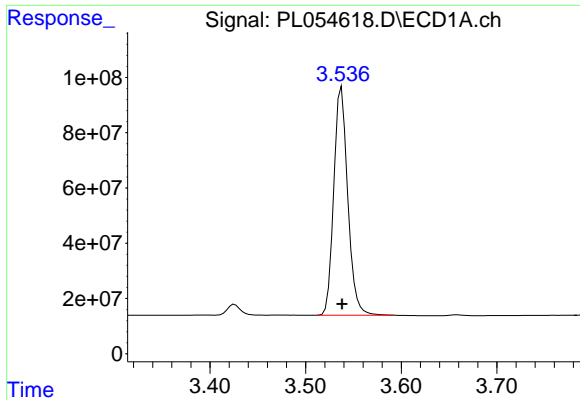
Data Path : Z:\pestpcbsrv\HPCHEM1\ECD_L\Data\PL112619\
 Data File : PL054618.D
 Signal(s) : Signal #1: ECD1A.ch Signal #2: ECD2B.ch
 Acq On : 26 Nov 2019 11:39
 Operator : SG\AJ
 Sample : PSTDICC075
 Misc :
 ALS Vial : 6 Sample Multiplier: 1

Instrument :
 ECD_L
 ClientSampled :
 PSTDICC075

Integration File signal 1: autoint1.e
 Integration File signal 2: autoint2.e
 Quant Time: Nov 27 00:54:25 2019
 Quant Method : Z:\pestpcbsrv\HPCHEM1\ECD_L\methods\PL112619.M
 Quant Title : GC Extractables
 QLast Update : Wed Nov 27 00:43:52 2019
 Response via : Initial Calibration
 Integrator: ChemStation

Volume Inj. : 1 µl
 Signal #1 Phase : ZB-MR2 Signal #2 Phase: ZB-MR1
 Signal #1 Info : 30M x 0.32mm x0.2 Signal #2 Info : 30M x 0.32mm x0.5µm

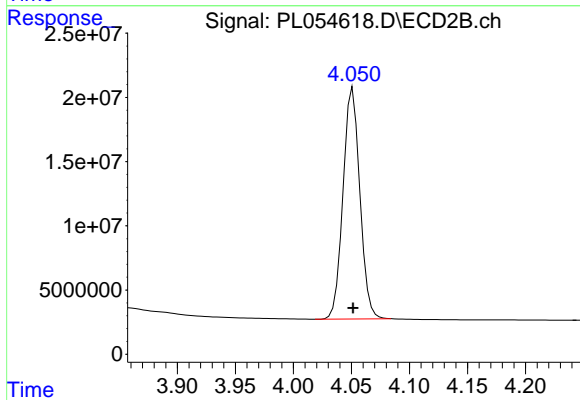




#1 Tetrachloro-m-xylene

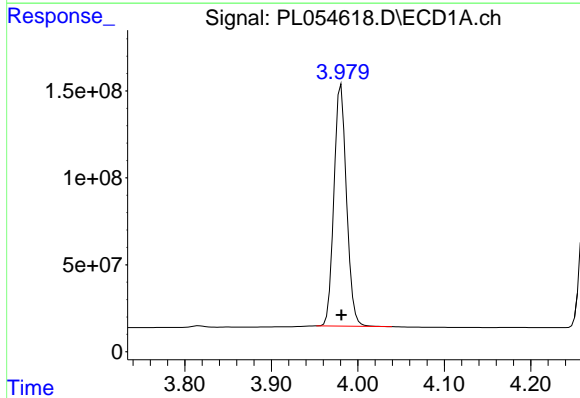
R.T.: 3.538 min
 Delta R.T.: 0.000 min
 Response: 836331937
 Conc: 70.58 ng/ml

Instrument :
 ECD_L
 ClientSampleId :
 PSTDICC075



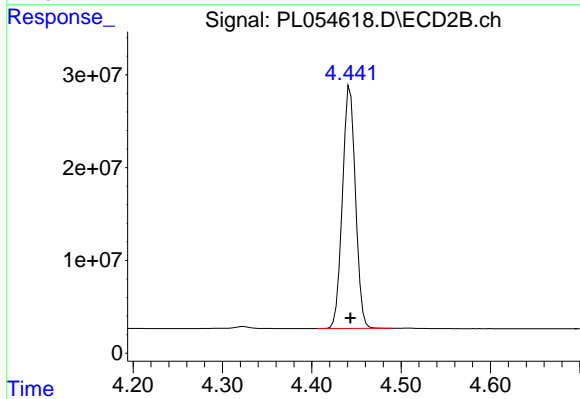
#1 Tetrachloro-m-xylene

R.T.: 4.051 min
 Delta R.T.: 0.000 min
 Response: 181579122
 Conc: 70.92 ng/ml



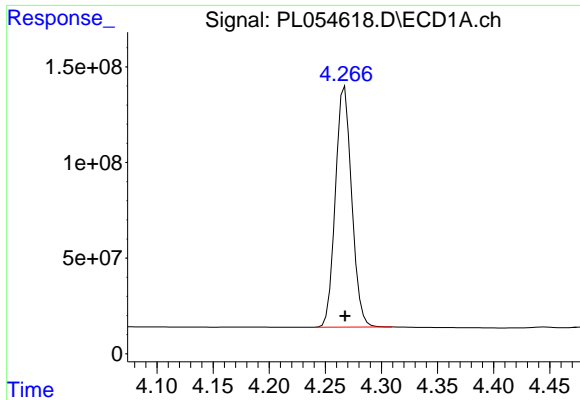
#2 alpha-BHC

R.T.: 3.981 min
 Delta R.T.: 0.000 min
 Response: 1398207504
 Conc: 71.28 ng/ml



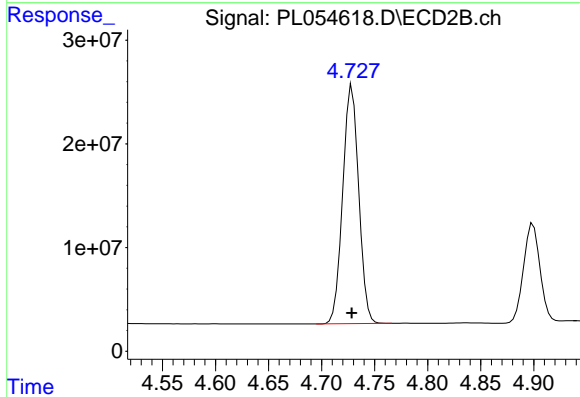
#2 alpha-BHC

R.T.: 4.443 min
 Delta R.T.: 0.000 min
 Response: 264249459
 Conc: 72.81 ng/ml

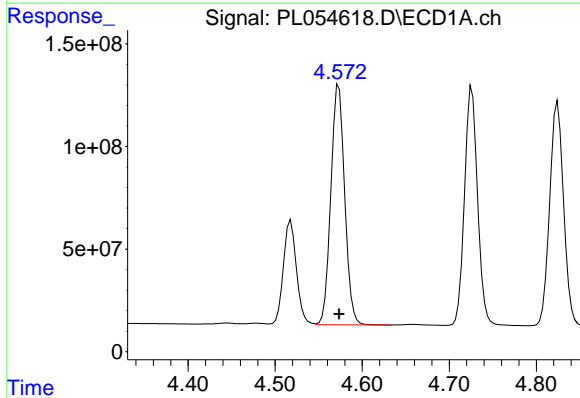


#3 gamma-BHC (Lindane)
 R.T.: 4.267 min
 Delta R.T.: 0.000 min
 Response: 1273452309
 Conc: 71.61 ng/ml

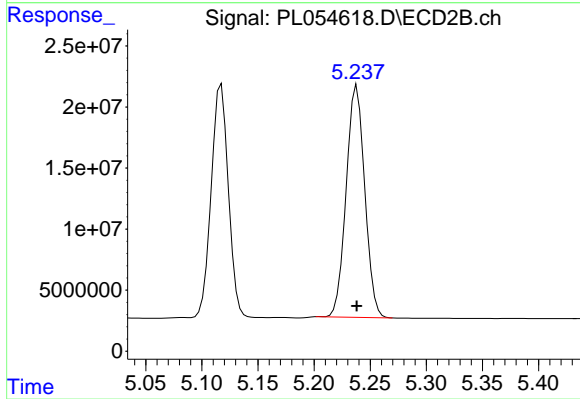
Instrument :
 ECD_L
 ClientSampleId :
 PSTDICC075



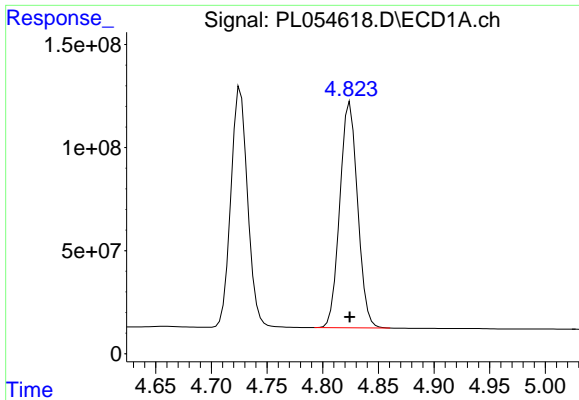
#3 gamma-BHC (Lindane)
 R.T.: 4.729 min
 Delta R.T.: 0.000 min
 Response: 240470725
 Conc: 72.53 ng/ml



#4 Heptachlor
 R.T.: 4.573 min
 Delta R.T.: 0.000 min
 Response: 1292691831
 Conc: 71.42 ng/ml

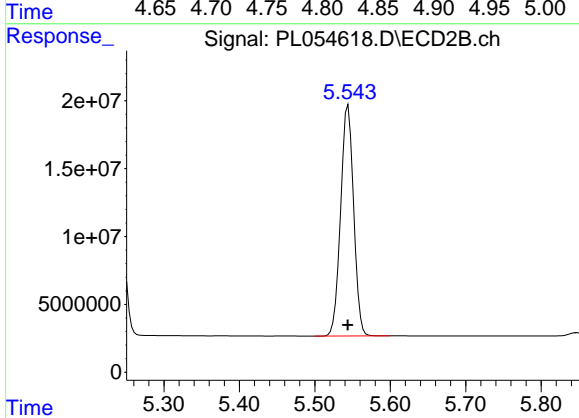


#4 Heptachlor
 R.T.: 5.238 min
 Delta R.T.: 0.000 min
 Response: 218374524
 Conc: 72.29 ng/ml

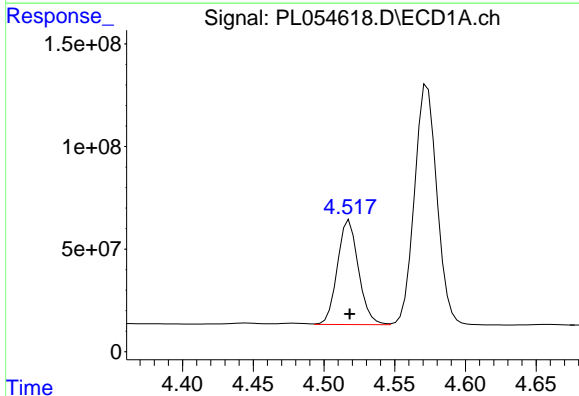


#5 Aldrin
 R.T.: 4.825 min
 Delta R.T.: 0.000 min
 Response: 1217190314
 Conc: 72.26 ng/ml

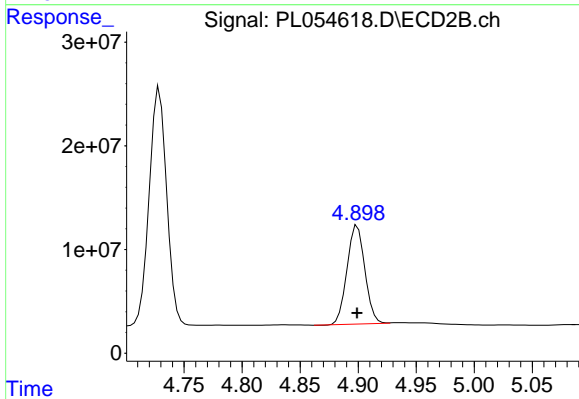
Instrument :
 ECD_L
 ClientSampleId :
 PSTDICC075



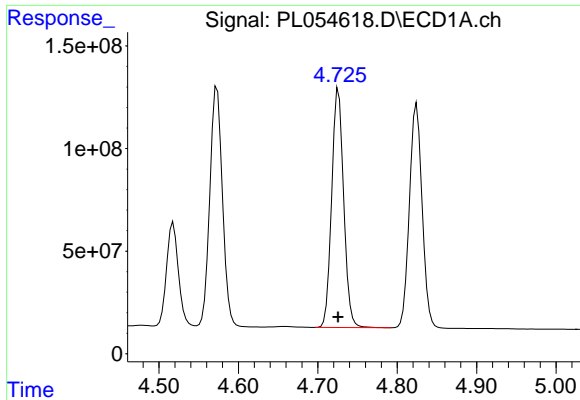
#5 Aldrin
 R.T.: 5.544 min
 Delta R.T.: 0.000 min
 Response: 203621819
 Conc: 72.62 ng/ml



#6 beta-BHC
 R.T.: 4.518 min
 Delta R.T.: 0.000 min
 Response: 528178943
 Conc: 70.96 ng/ml

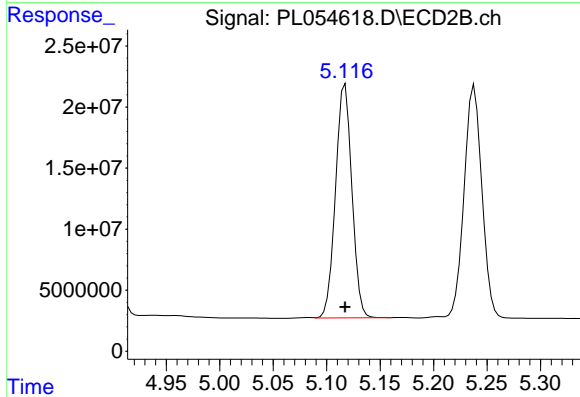


#6 beta-BHC
 R.T.: 4.899 min
 Delta R.T.: 0.000 min
 Response: 101476377
 Conc: 71.65 ng/ml

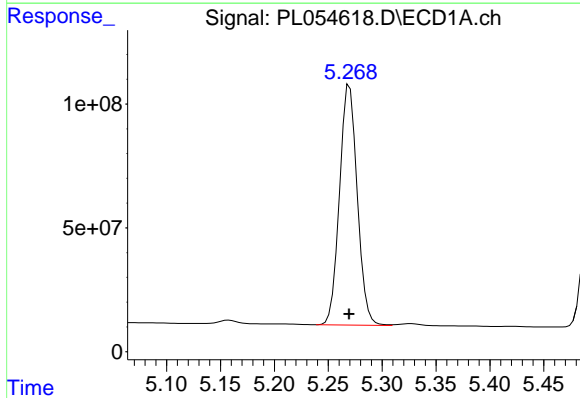


#7 delta-BHC
 R.T.: 4.726 min
 Delta R.T.: 0.000 min
 Response: 1218694330
 Conc: 72.18 ng/ml

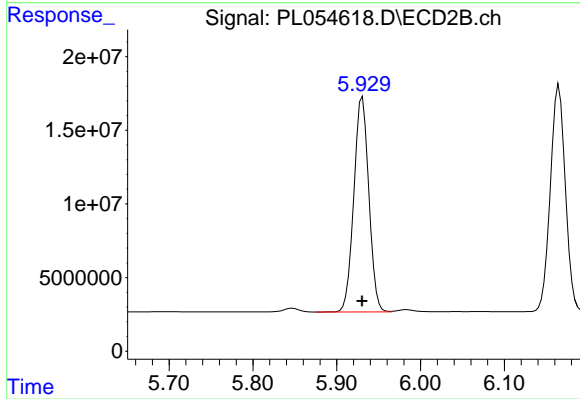
Instrument :
 ECD_L
 ClientSampleId :
 PSTDICC075



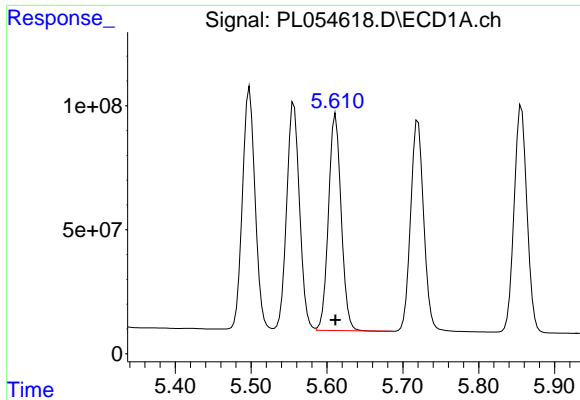
#7 delta-BHC
 R.T.: 5.117 min
 Delta R.T.: 0.000 min
 Response: 203801615
 Conc: 73.58 ng/ml



#8 Heptachlor epoxide
 R.T.: 5.270 min
 Delta R.T.: 0.000 min
 Response: 1112460113
 Conc: 71.53 ng/ml

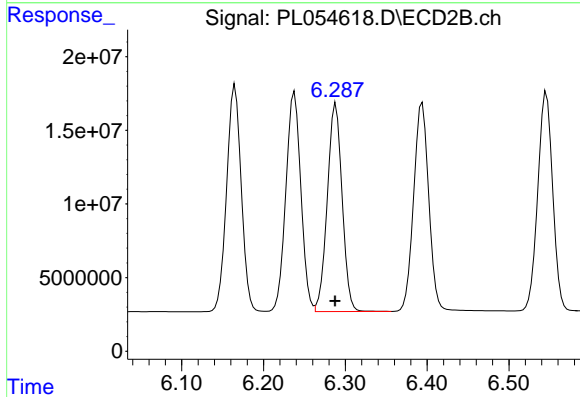


#8 Heptachlor epoxide
 R.T.: 5.931 min
 Delta R.T.: 0.000 min
 Response: 181730766
 Conc: 72.13 ng/ml

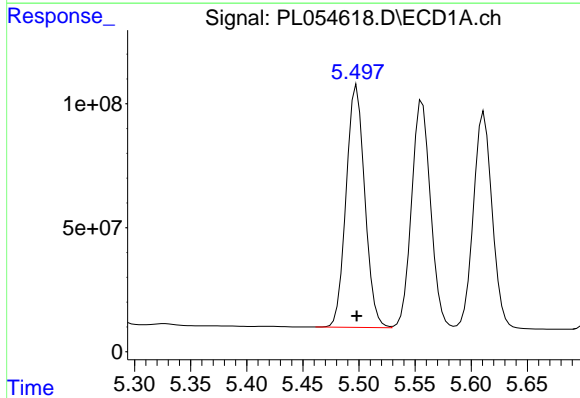


#9 Endosulfan I
 R.T.: 5.611 min
 Delta R.T.: 0.000 min
 Response: 1015207406
 Conc: 72.69 ng/ml

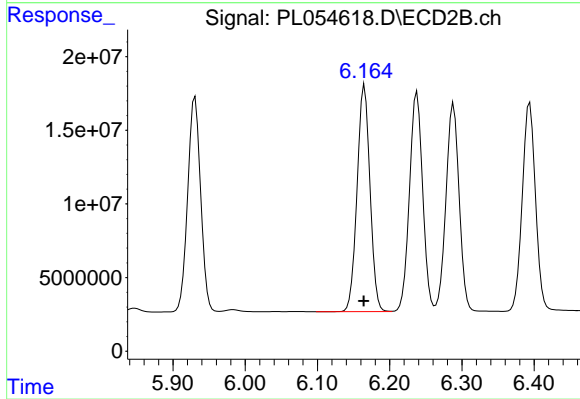
Instrument :
 ECD_L
 ClientSampleId :
 PSTDICC075



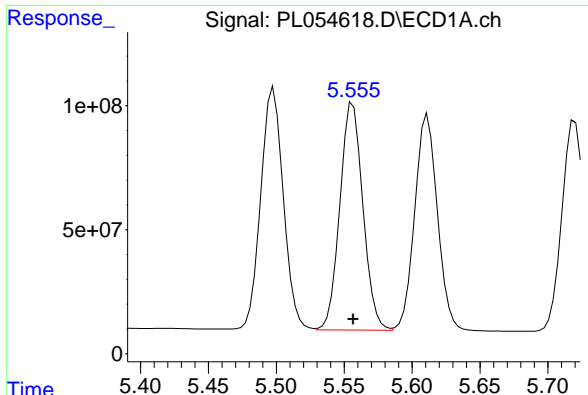
#9 Endosulfan I
 R.T.: 6.289 min
 Delta R.T.: 0.000 min
 Response: 178048527
 Conc: 72.29 ng/ml



#10 gamma-Chlordane
 R.T.: 5.498 min
 Delta R.T.: 0.000 min
 Response: 1127588141
 Conc: 72.41 ng/ml



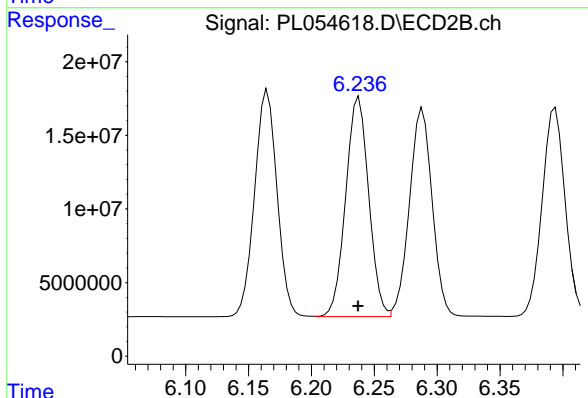
#10 gamma-Chlordane
 R.T.: 6.165 min
 Delta R.T.: 0.000 min
 Response: 191182922
 Conc: 72.57 ng/ml



#11 alpha-Chlordane

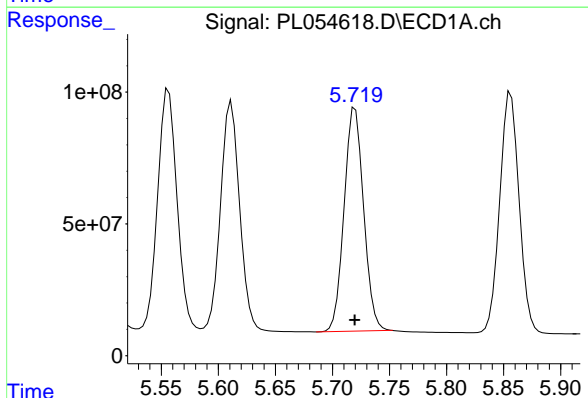
R.T.: 5.556 min
Delta R.T.: 0.000 min
Response: 1082502105
Conc: 72.09 ng/ml

Instrument :
ECD_L
ClientSampleId :
PSTDICC075



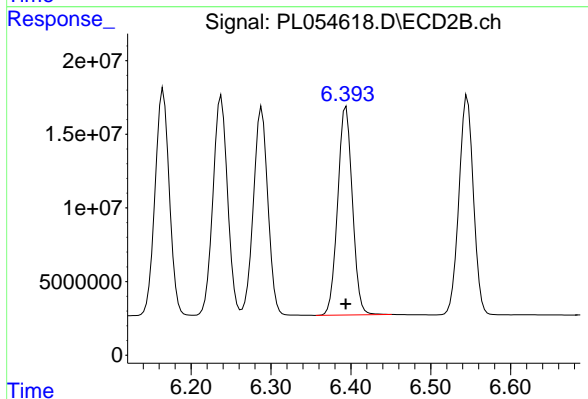
#11 alpha-Chlordane

R.T.: 6.238 min
Delta R.T.: 0.000 min
Response: 189743137
Conc: 72.43 ng/ml



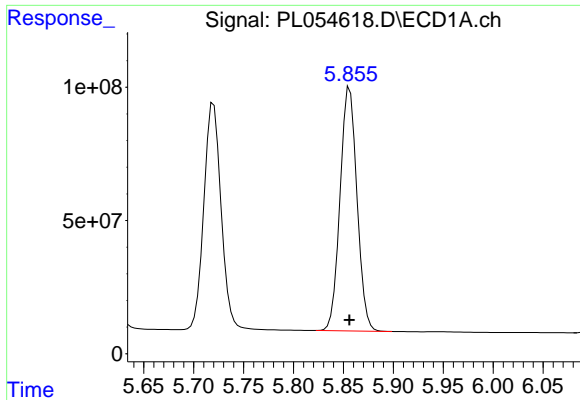
#12 4,4'-DDE

R.T.: 5.720 min
Delta R.T.: 0.000 min
Response: 1003858808
Conc: 72.72 ng/ml



#12 4,4'-DDE

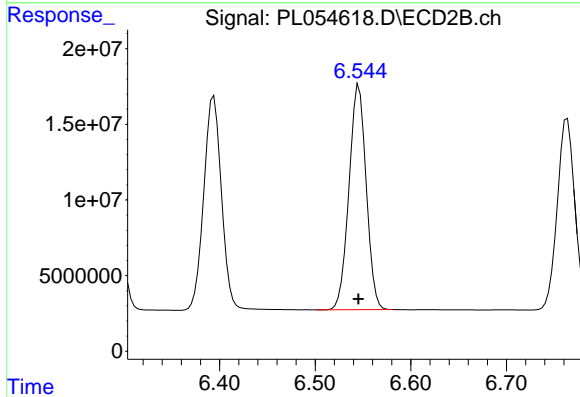
R.T.: 6.394 min
Delta R.T.: 0.000 min
Response: 180757840
Conc: 73.10 ng/ml



#13 Dieldrin

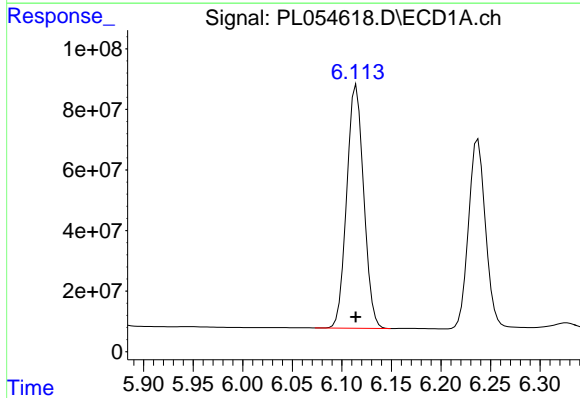
R.T.: 5.856 min
 Delta R.T.: 0.000 min
 Response: 1079861312
 Conc: 72.71 ng/ml

Instrument :
 ECD_L
 ClientSampleId :
 PSTDICC075



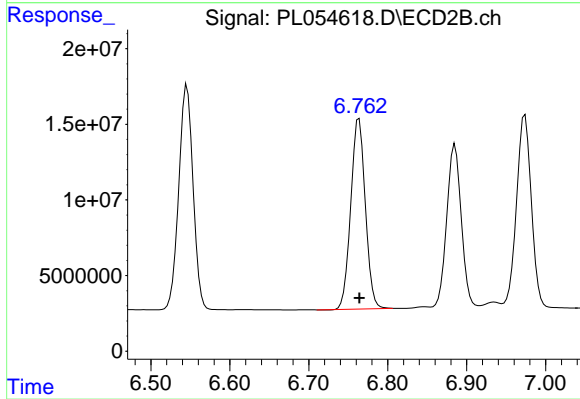
#13 Dieldrin

R.T.: 6.546 min
 Delta R.T.: 0.000 min
 Response: 186801165
 Conc: 73.32 ng/ml



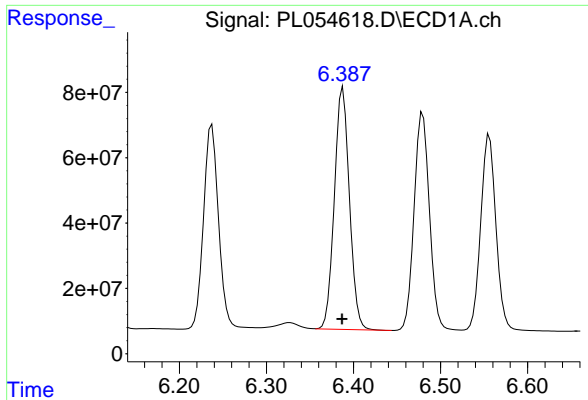
#14 Endrin

R.T.: 6.115 min
 Delta R.T.: 0.000 min
 Response: 958123834
 Conc: 72.66 ng/ml



#14 Endrin

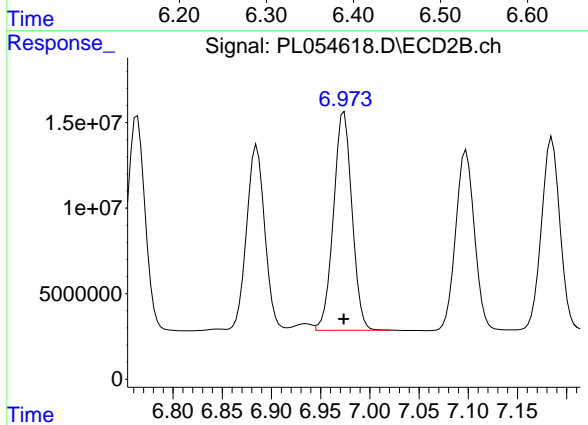
R.T.: 6.764 min
 Delta R.T.: 0.000 min
 Response: 161678477
 Conc: 73.01 ng/ml



#15 Endosulfan II

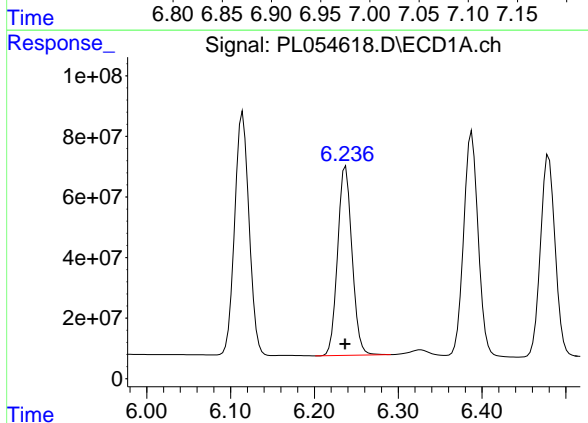
R.T.: 6.388 min
Delta R.T.: 0.000 min
Response: 893104188
Conc: 72.18 ng/ml

Instrument :
ECD_L
ClientSampleId :
PSTDICC075



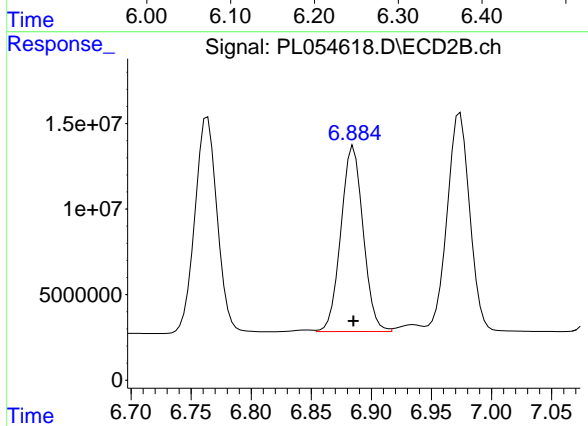
#15 Endosulfan II

R.T.: 6.974 min
Delta R.T.: 0.000 min
Response: 167042297
Conc: 72.42 ng/ml



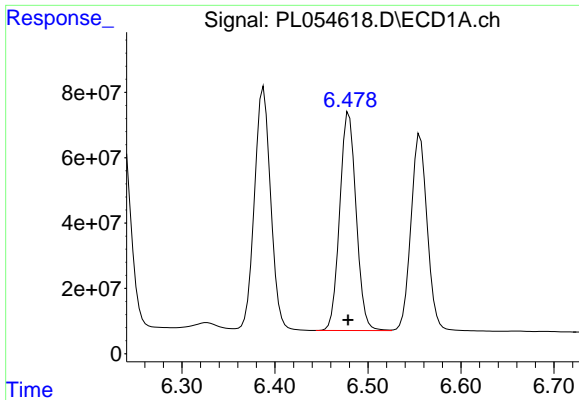
#16 4,4'-DDD

R.T.: 6.237 min
Delta R.T.: 0.000 min
Response: 746240341
Conc: 74.39 ng/ml



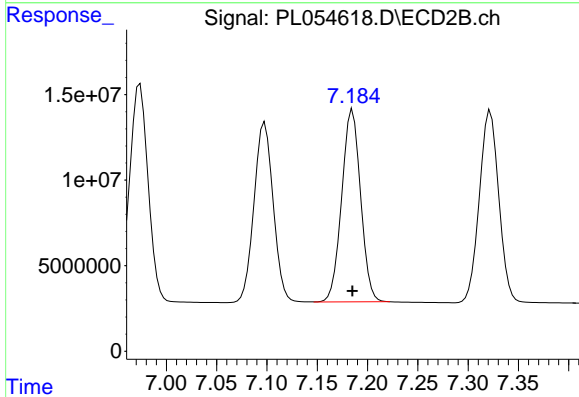
#16 4,4'-DDD

R.T.: 6.885 min
Delta R.T.: 0.000 min
Response: 139610358
Conc: 73.29 ng/ml

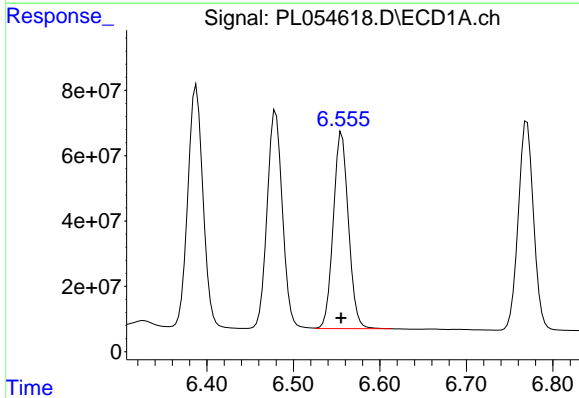


#17 4,4'-DDT
 R.T.: 6.480 min
 Delta R.T.: 0.000 min
 Response: 819196787
 Conc: 74.19 ng/ml

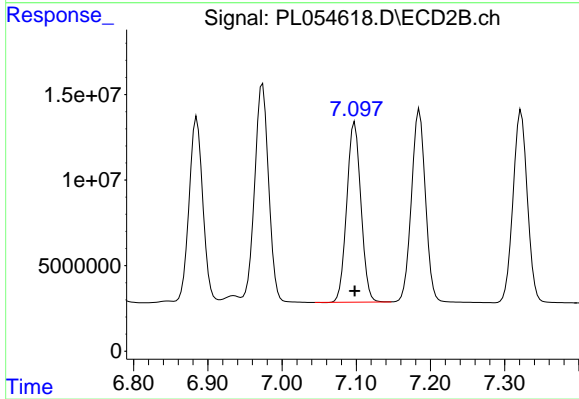
Instrument :
 ECD_L
 ClientSampleId :
 PSTDICC075



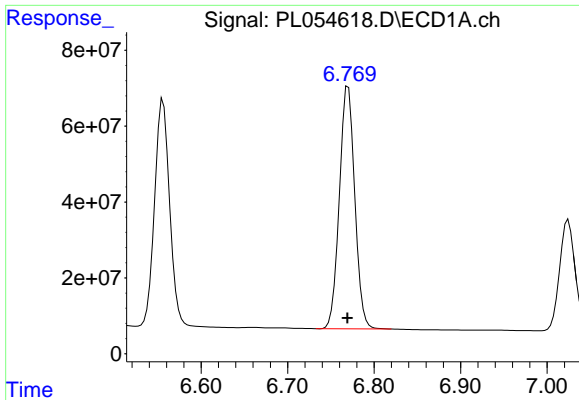
#17 4,4'-DDT
 R.T.: 7.185 min
 Delta R.T.: 0.000 min
 Response: 146551777
 Conc: 73.74 ng/ml



#18 Endrin aldehyde
 R.T.: 6.556 min
 Delta R.T.: 0.000 min
 Response: 728559937
 Conc: 72.53 ng/ml

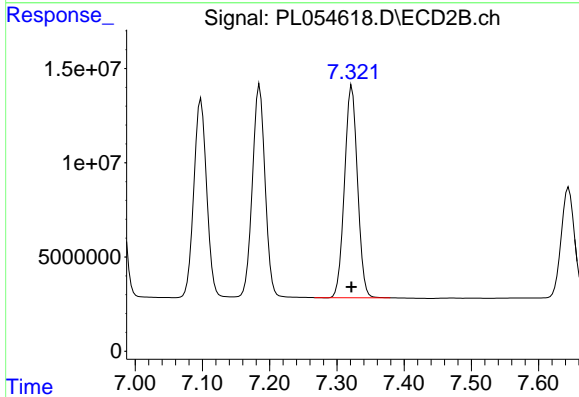


#18 Endrin aldehyde
 R.T.: 7.098 min
 Delta R.T.: 0.000 min
 Response: 139340326
 Conc: 72.19 ng/ml

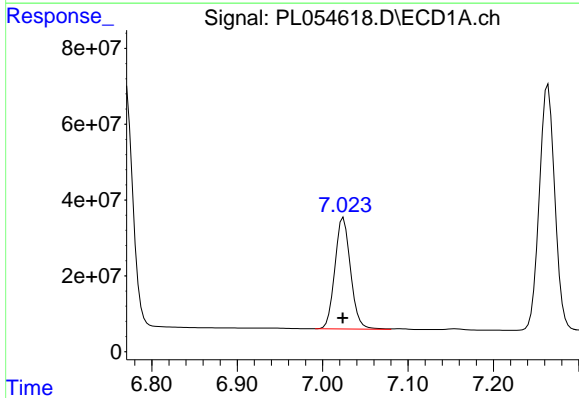


#19 Endosulfan Sulfate
 R.T.: 6.770 min
 Delta R.T.: 0.000 min
 Response: 786370051
 Conc: 72.04 ng/ml

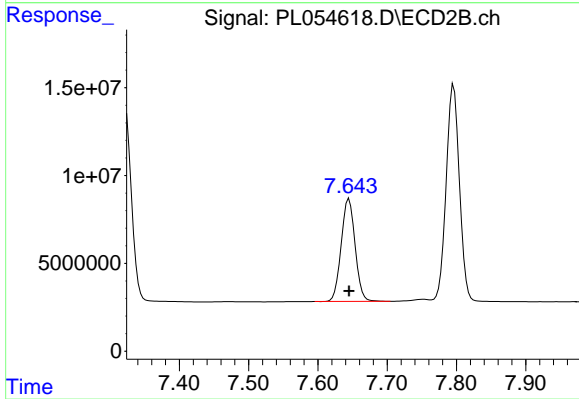
Instrument :
 ECD_L
 ClientSampleId :
 PSTDICC075



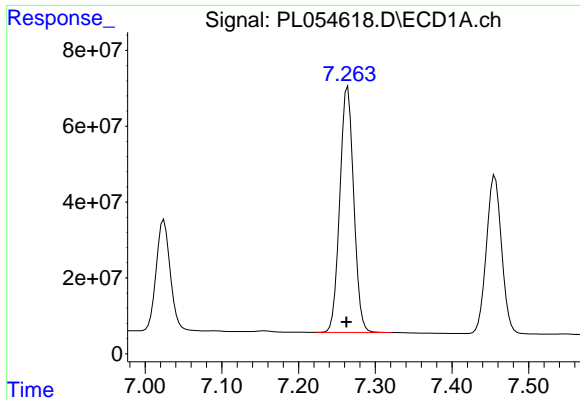
#19 Endosulfan Sulfate
 R.T.: 7.322 min
 Delta R.T.: 0.000 min
 Response: 150779288
 Conc: 72.00 ng/ml



#20 Methoxychlor
 R.T.: 7.024 min
 Delta R.T.: 0.000 min
 Response: 374355935
 Conc: 73.55 ng/ml



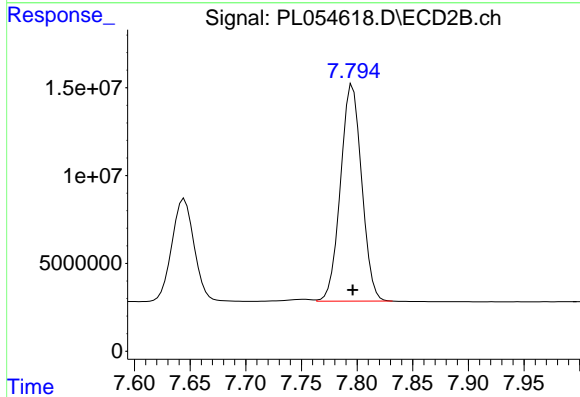
#20 Methoxychlor
 R.T.: 7.645 min
 Delta R.T.: 0.000 min
 Response: 81536391
 Conc: 71.91 ng/ml



#21 Endrin ketone

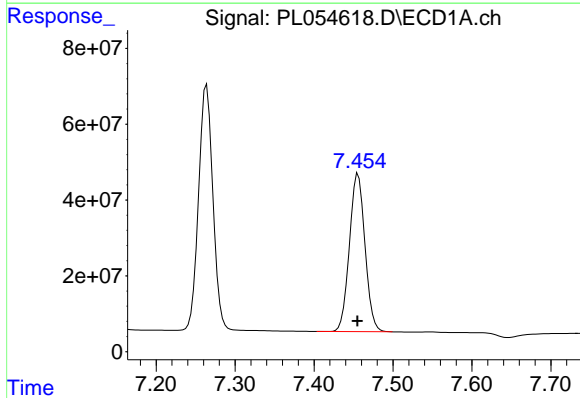
R.T.: 7.264 min
 Delta R.T.: 0.001 min
 Response: 817771075
 Conc: 73.42 ng/ml

Instrument :
 ECD_L
 ClientSampleId :
 PSTDICC075



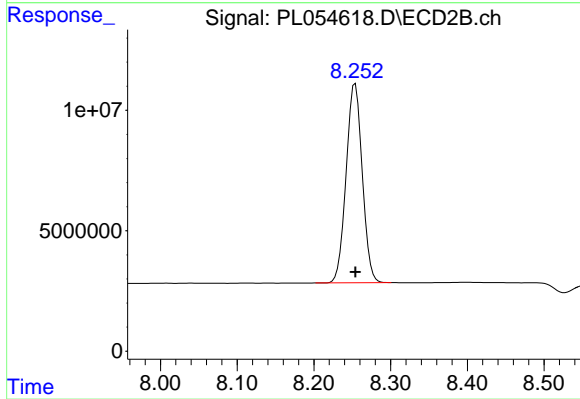
#21 Endrin ketone

R.T.: 7.796 min
 Delta R.T.: 0.000 min
 Response: 163346934
 Conc: 72.96 ng/ml



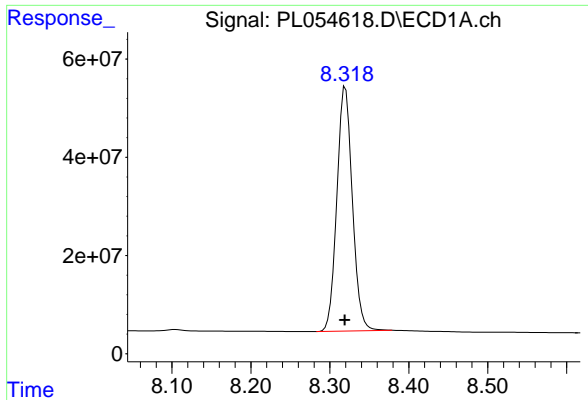
#22 Mirex

R.T.: 7.456 min
 Delta R.T.: 0.001 min
 Response: 571640969
 Conc: 71.00 ng/ml



#22 Mirex

R.T.: 8.254 min
 Delta R.T.: 0.000 min
 Response: 121512392
 Conc: 71.27 ng/ml



#28 Decachlorobiphenyl

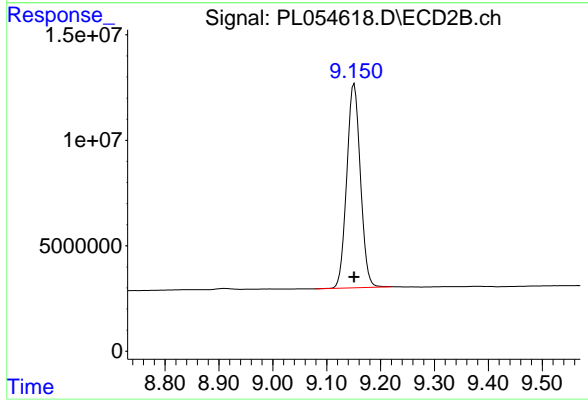
R.T.: 8.320 min

Delta R.T.: 0.001 min

Response: 678555175

Conc: 72.04 ng/ml

Instrument :
ECD_L
ClientSampleId :
PSTDIC075



#28 Decachlorobiphenyl

R.T.: 9.151 min

Delta R.T.: 0.000 min

Response: 170362997

Conc: 71.86 ng/ml