

Data Path : Z:\pestpcbsrv\HPCHEM1\ECD_L\Data\PL112619\
 Data File : PL054620.D
 Signal(s) : Signal #1: ECD1A.ch Signal #2: ECD2B.ch
 Acq On : 26 Nov 2019 12:07
 Operator : SG\AJ
 Sample : PSTDICC025
 Misc :
 ALS Vial : 8 Sample Multiplier: 1

Instrument :
 ECD_L
 ClientSampleId :
 PSTDICC025

Integration File signal 1: autoint1.e
 Integration File signal 2: autoint2.e
 Quant Time: Nov 27 00:54:53 2019
 Quant Method : Z:\pestpcbsrv\HPCHEM1\ECD_L\methods\PL112619.M
 Quant Title : GC Extractables
 QLast Update : Wed Nov 27 00:43:52 2019
 Response via : Initial Calibration
 Integrator: ChemStation

Volume Inj. : 1 µl
 Signal #1 Phase : ZB-MR2 Signal #2 Phase: ZB-MR1
 Signal #1 Info : 30M x 0.32mm x0.2 Signal #2 Info : 30M x 0.32mm x0.5µm

	Compound	RT#1	RT#2	Resp#1	Resp#2	ng/ml	ng/ml

System Monitoring Compounds							
1)	SA Tetrachlo...	3.537	4.051	277.3E6	60637446	23.400	23.682
28)	SA Decachlor...	8.318	9.151	229.6E6	58166039	24.372	24.535
Target Compounds							
2)	A alpha-BHC	3.981	4.443	448.3E6	81656644	22.853	22.499
3)	MA gamma-BHC...	4.267	4.728	405.2E6	75457916	22.785	22.758
4)	MA Heptachlor	4.573	5.238	419.9E6	70574289	23.200	23.363
5)	MB Aldrin	4.824	5.544	387.6E6	64643700	23.011	23.053
6)	B beta-BHC	4.518	4.899	176.0E6	34107593	23.646	24.083
7)	B delta-BHC	4.726	5.117	384.6E6	62348047	22.777	22.509
8)	B Heptachlo...	5.269	5.930	362.4E6	59384298	23.305	23.570
9)	A Endosulfan I	5.611	6.288	324.8E6	58461407	23.256	23.737
10)	B gamma-Chl...	5.498	6.164	355.2E6	61945761	22.812	23.514
11)	B alpha-Chl...	5.556	6.237	350.8E6	61876205	23.362	23.620
12)	B 4,4'-DDE	5.720	6.393	310.5E6	57612102	22.492	23.298
13)	MA Dieldrin	5.856	6.545	335.7E6	59169692	22.606	23.223
14)	MA Endrin	6.115	6.764	296.9E6	51755206	22.519	23.370
15)	B Endosulfa...	6.388	6.973	283.5E6	55334809	22.914	23.991
16)	A 4,4'-DDD	6.238	6.885	225.3E6	44604465	22.458	23.416
17)	MA 4,4'-DDT	6.479	7.184	242.3E6	45832359	21.947	23.060
18)	B Endrin al...	6.555	7.098	232.6E6	46602376	23.152	24.145
19)	B Endosulfa...	6.769	7.321	251.9E6	50202452	23.079	23.974
20)	A Methoxychlor	7.024	7.644	120.2E6	27706669	23.615	24.435
21)	B Endrin ke...	7.262	7.796	256.6E6	53131155	23.040	23.731
22)	Mirex	7.456	8.253	195.7E6	41733197	24.303	24.477

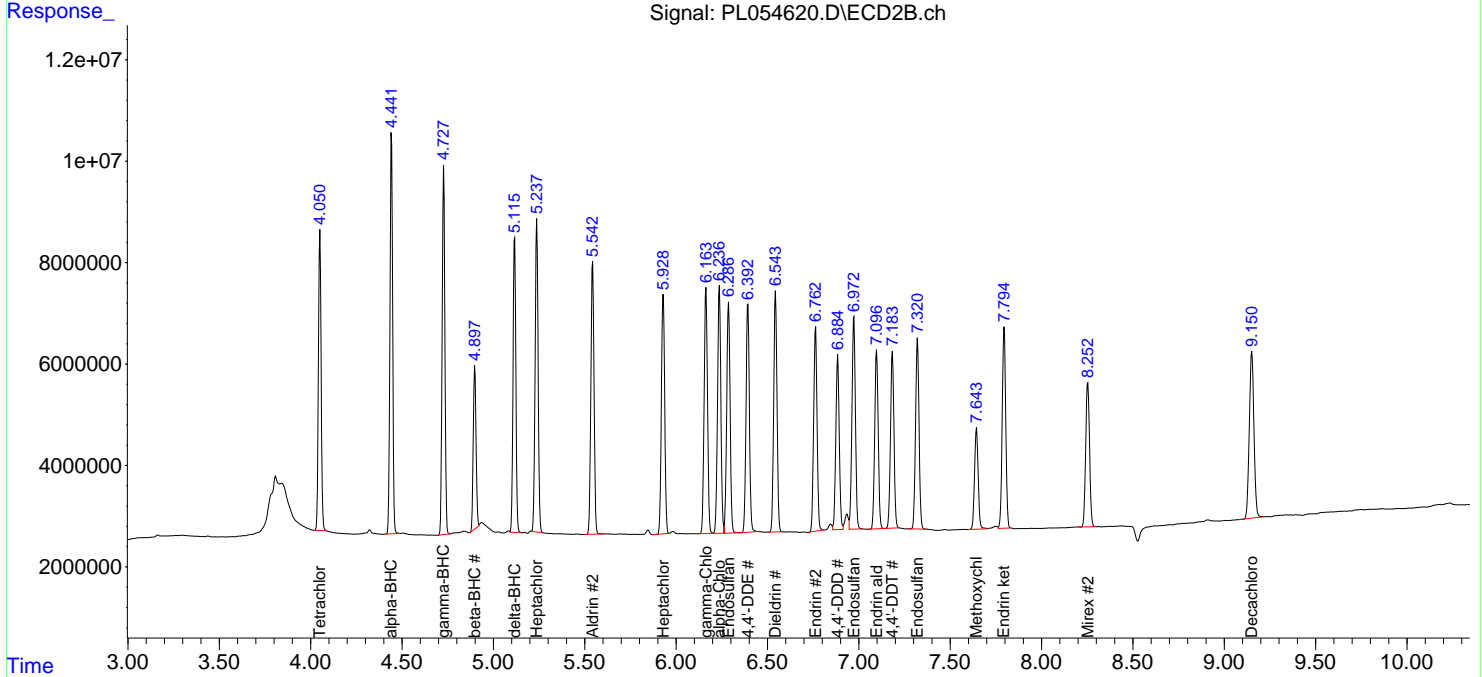
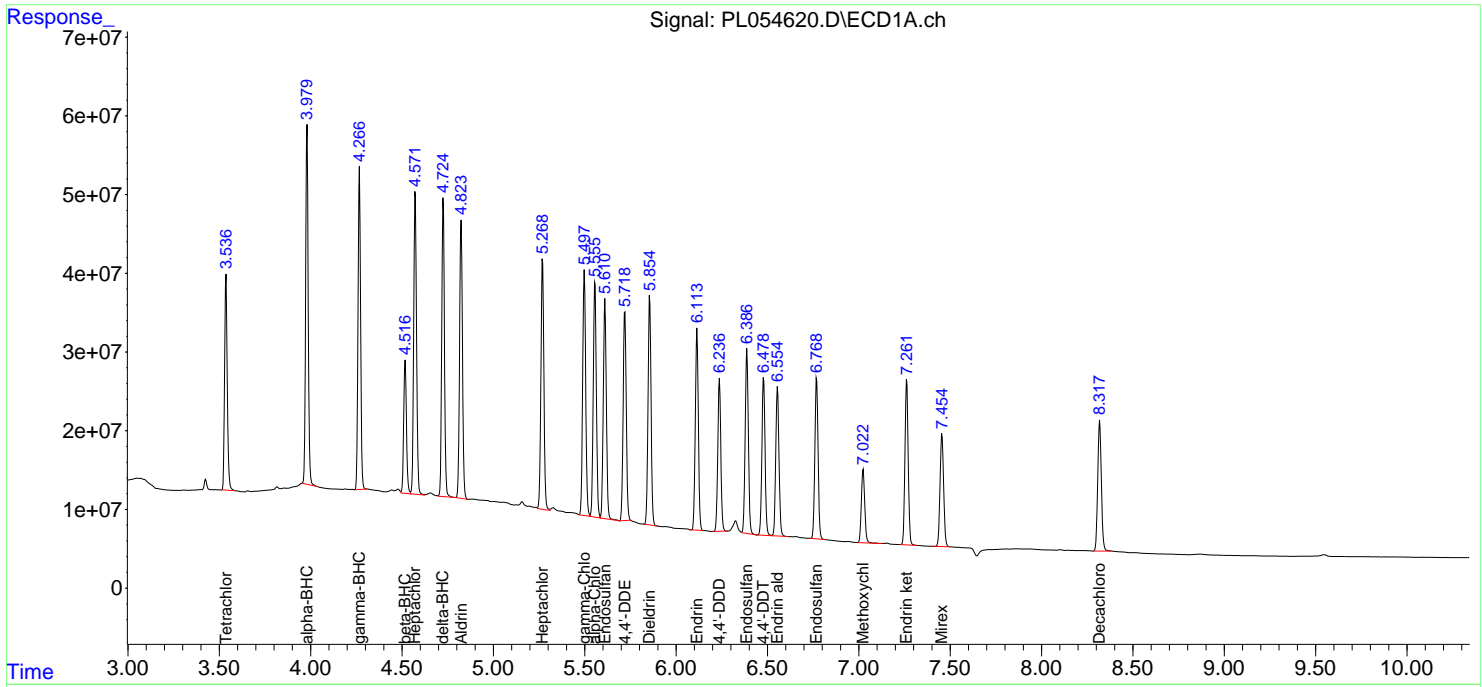
(f)=RT Delta > 1/2 Window (#)=Amounts differ by > 25% (m)=manual int.

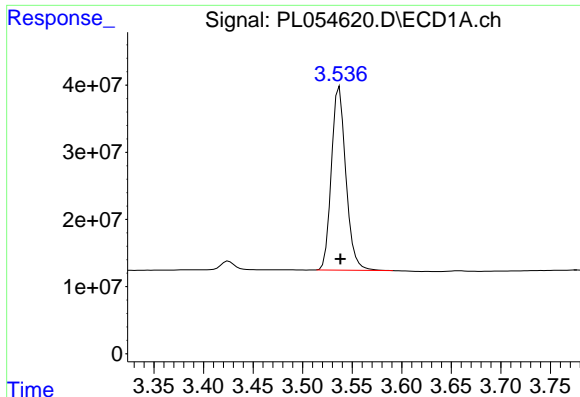
Data Path : Z:\pestpcbsrv\HPCHEM1\ECD_L\Data\PL112619\
 Data File : PL054620.D
 Signal(s) : Signal #1: ECD1A.ch Signal #2: ECD2B.ch
 Acq On : 26 Nov 2019 12:07
 Operator : SG\AJ
 Sample : PSTDICC025
 Misc :
 ALS Vial : 8 Sample Multiplier: 1

Instrument :
 ECD_L
 Client Sampled :
 PSTDICC025

Integration File signal 1: autoint1.e
 Integration File signal 2: autoint2.e
 Quant Time: Nov 27 00:54:53 2019
 Quant Method : Z:\pestpcbsrv\HPCHEM1\ECD_L\methods\PL112619.M
 Quant Title : GC Extractables
 QLast Update : Wed Nov 27 00:43:52 2019
 Response via : Initial Calibration
 Integrator: ChemStation

Volume Inj. : 1 µl
 Signal #1 Phase : ZB-MR2 Signal #2 Phase: ZB-MR1
 Signal #1 Info : 30M x 0.32mm x0.2 Signal #2 Info : 30M x 0.32mm x0.5µm

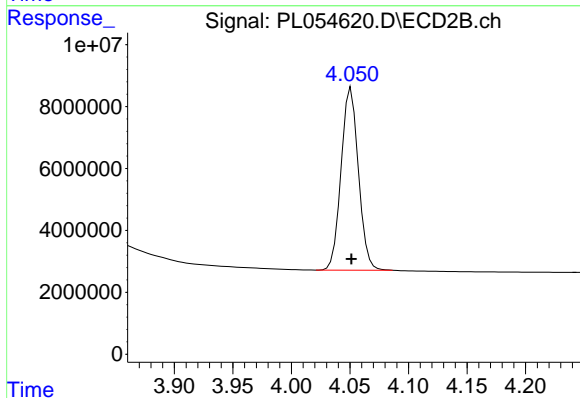




#1 Tetrachloro-m-xylene

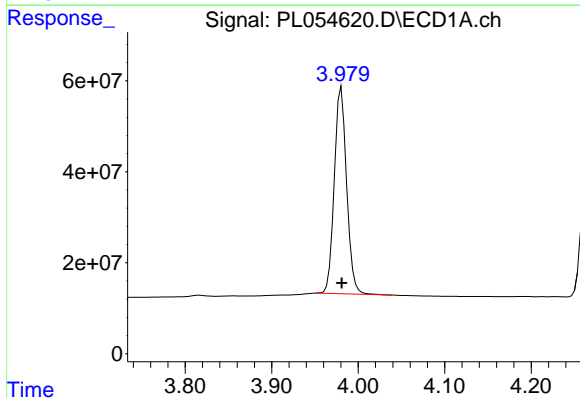
R.T.: 3.537 min
 Delta R.T.: 0.000 min
 Response: 277271305
 Conc: 23.40 ng/ml

Instrument :
 ECD_L
 ClientSampleId :
 PSTDICC025



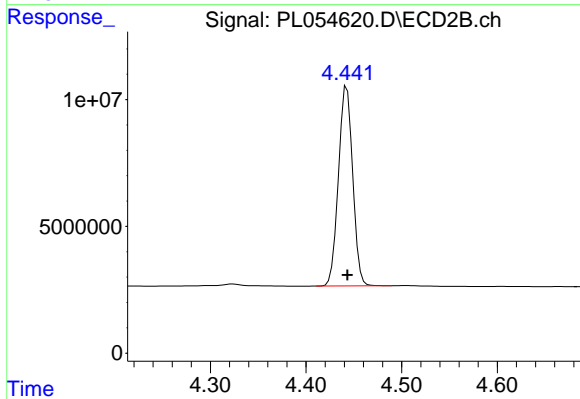
#1 Tetrachloro-m-xylene

R.T.: 4.051 min
 Delta R.T.: 0.000 min
 Response: 60637446
 Conc: 23.68 ng/ml



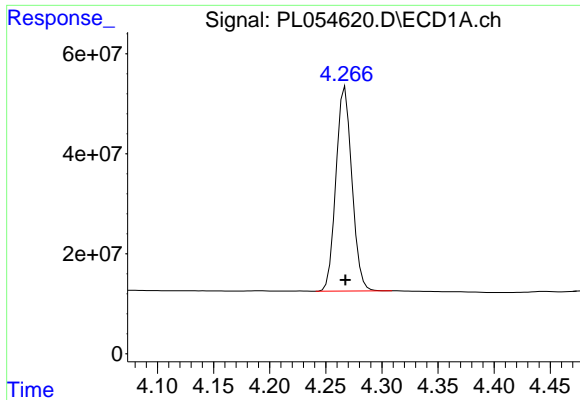
#2 alpha-BHC

R.T.: 3.981 min
 Delta R.T.: 0.000 min
 Response: 448273401
 Conc: 22.85 ng/ml



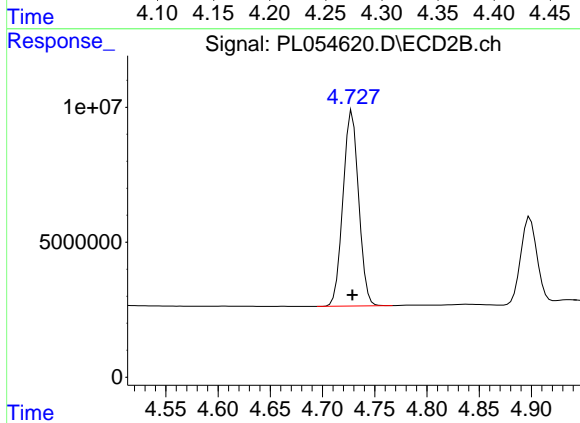
#2 alpha-BHC

R.T.: 4.443 min
 Delta R.T.: 0.000 min
 Response: 81656644
 Conc: 22.50 ng/ml

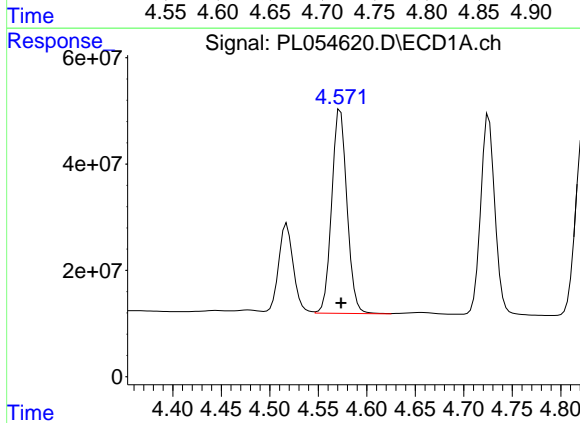


#3 gamma-BHC (Lindane)
R.T.: 4.267 min
Delta R.T.: 0.000 min
Response: 405164720
Conc: 22.79 ng/ml

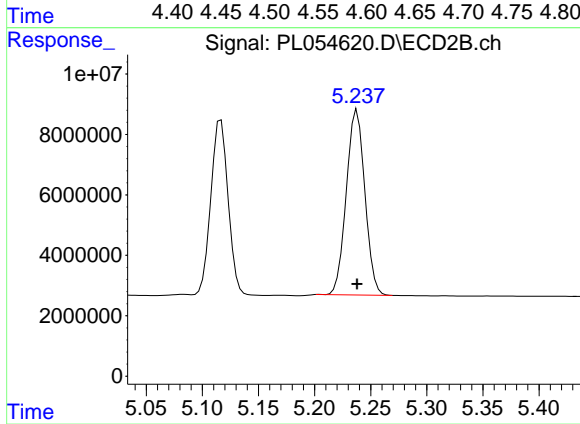
Instrument :
ECD_L
ClientSampleId :
PSTDICC025



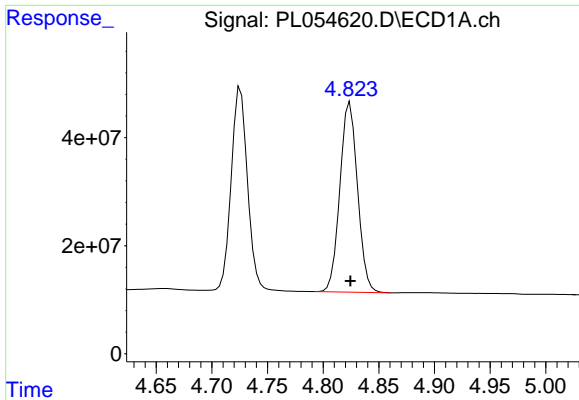
#3 gamma-BHC (Lindane)
R.T.: 4.728 min
Delta R.T.: 0.000 min
Response: 75457916
Conc: 22.76 ng/ml



#4 Heptachlor
R.T.: 4.573 min
Delta R.T.: 0.000 min
Response: 419939311
Conc: 23.20 ng/ml

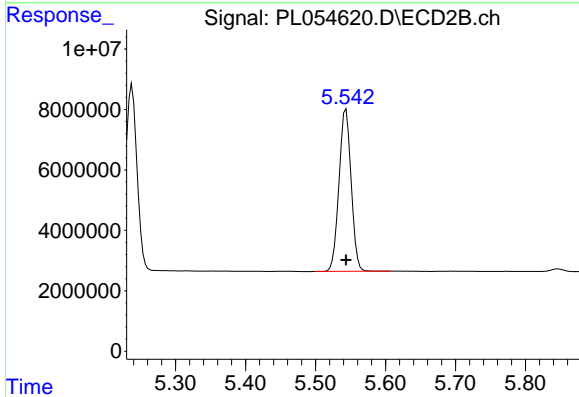


#4 Heptachlor
R.T.: 5.238 min
Delta R.T.: 0.000 min
Response: 70574289
Conc: 23.36 ng/ml

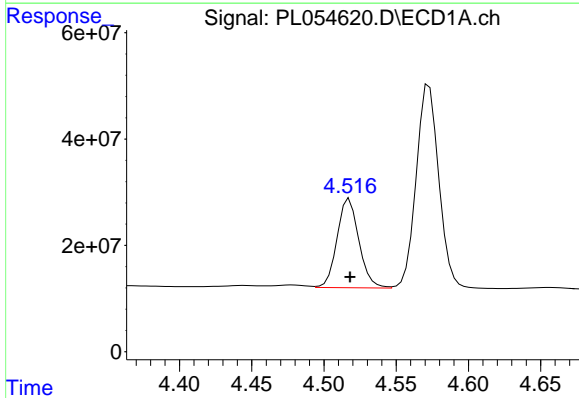


#5 Aldrin
 R.T.: 4.824 min
 Delta R.T.: 0.000 min
 Response: 387643637
 Conc: 23.01 ng/ml

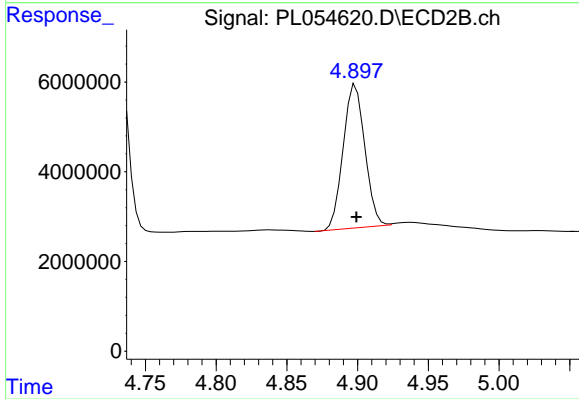
Instrument :
 ECD_L
 ClientSampled :
 PSTDICC025



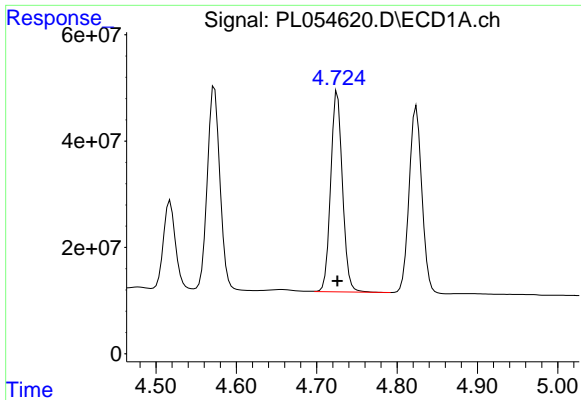
#5 Aldrin
 R.T.: 5.544 min
 Delta R.T.: 0.000 min
 Response: 64643700
 Conc: 23.05 ng/ml



#6 beta-BHC
 R.T.: 4.518 min
 Delta R.T.: 0.000 min
 Response: 176020649
 Conc: 23.65 ng/ml



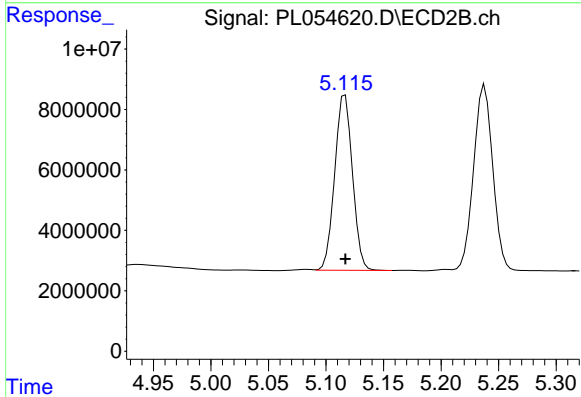
#6 beta-BHC
 R.T.: 4.899 min
 Delta R.T.: 0.000 min
 Response: 34107593
 Conc: 24.08 ng/ml



#7 delta-BHC

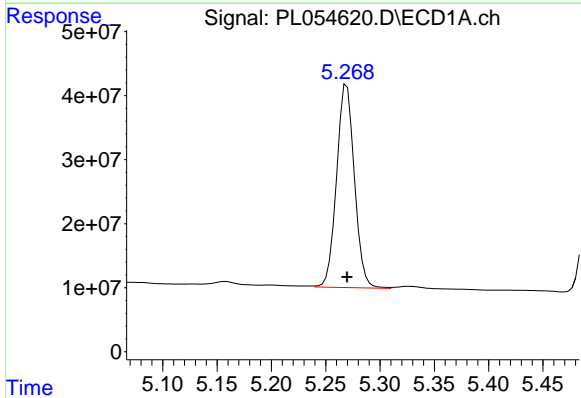
R.T.: 4.726 min
 Delta R.T.: 0.000 min
 Response: 384588399
 Conc: 22.78 ng/ml

Instrument :
 ECD_L
 ClientSampled :
 PSTDICC025



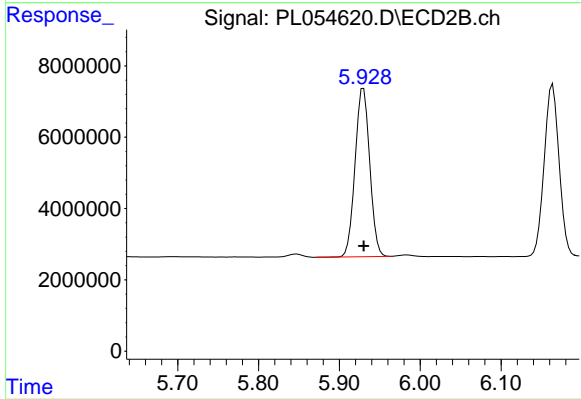
#7 delta-BHC

R.T.: 5.117 min
 Delta R.T.: 0.000 min
 Response: 62348047
 Conc: 22.51 ng/ml



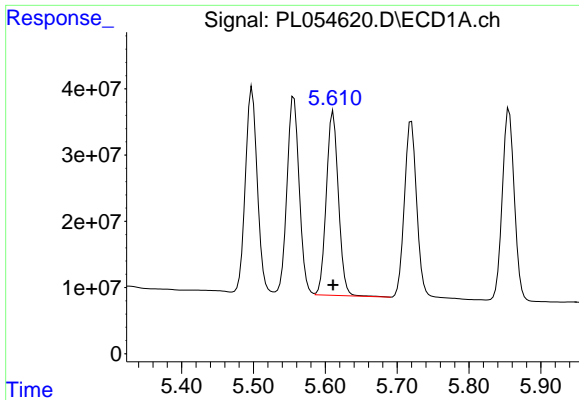
#8 Heptachlor epoxide

R.T.: 5.269 min
 Delta R.T.: 0.000 min
 Response: 362447726
 Conc: 23.31 ng/ml



#8 Heptachlor epoxide

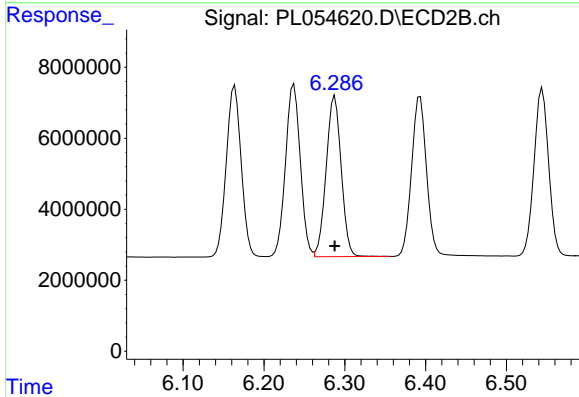
R.T.: 5.930 min
 Delta R.T.: 0.000 min
 Response: 59384298
 Conc: 23.57 ng/ml



#9 Endosulfan I

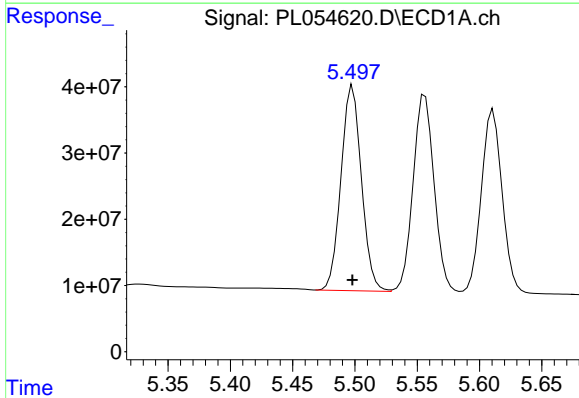
R.T.: 5.611 min
 Delta R.T.: 0.000 min
 Response: 324786504
 Conc: 23.26 ng/ml

Instrument :
 ECD_L
 ClientSampleId :
 PSTDICC025



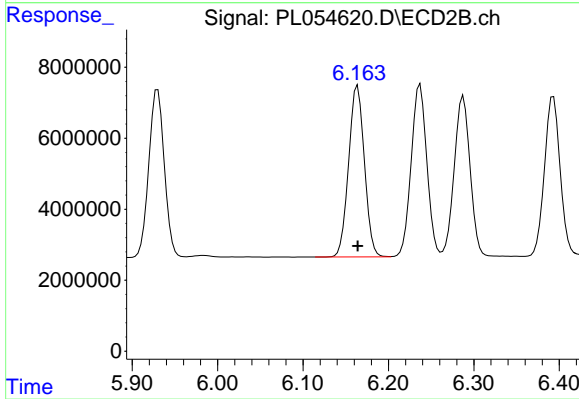
#9 Endosulfan I

R.T.: 6.288 min
 Delta R.T.: 0.000 min
 Response: 58461407
 Conc: 23.74 ng/ml



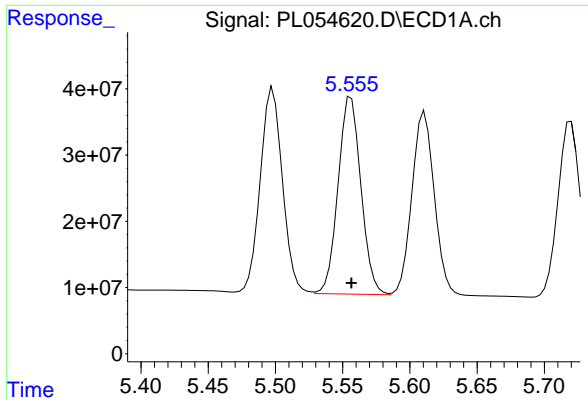
#10 gamma-Chlordane

R.T.: 5.498 min
 Delta R.T.: 0.000 min
 Response: 355223865
 Conc: 22.81 ng/ml



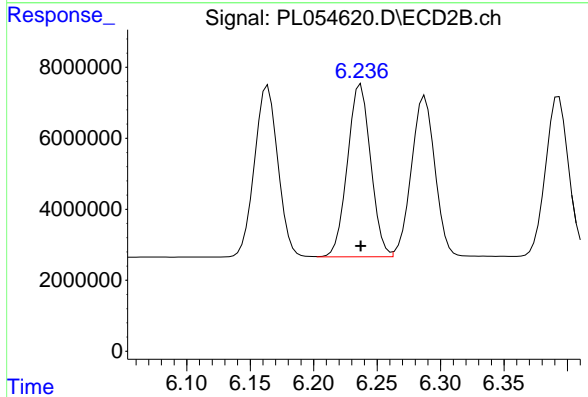
#10 gamma-Chlordane

R.T.: 6.164 min
 Delta R.T.: 0.000 min
 Response: 61945761
 Conc: 23.51 ng/ml

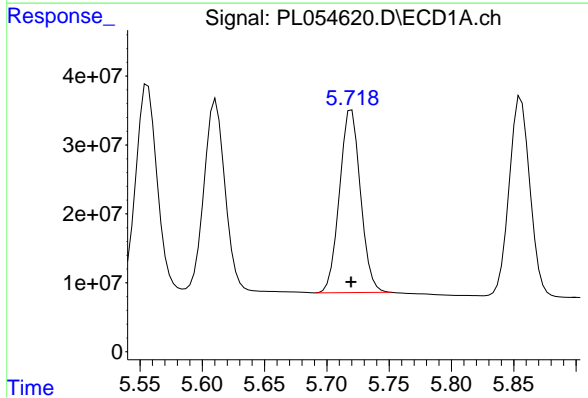


#11 alpha-Chlordane
 R.T.: 5.556 min
 Delta R.T.: 0.000 min
 Response: 350815391
 Conc: 23.36 ng/ml

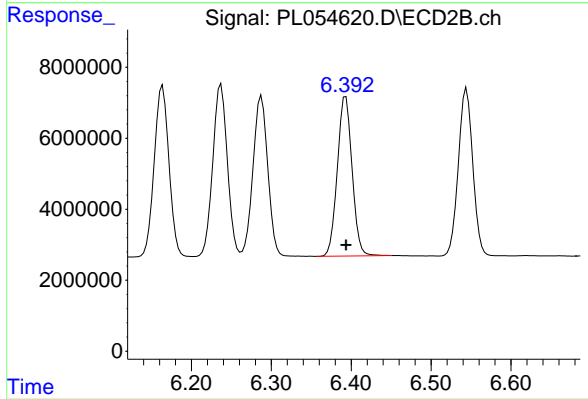
Instrument :
 ECD_L
 ClientSampleId :
 PSTDICC025



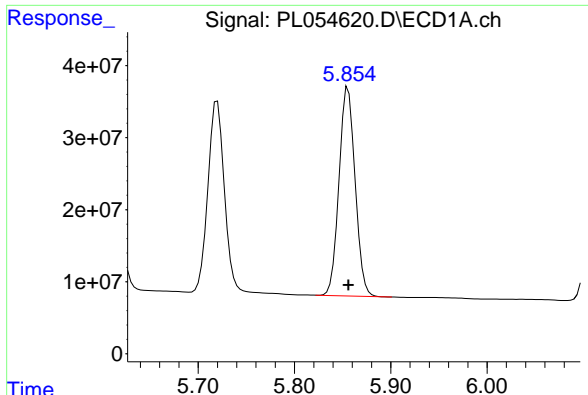
#11 alpha-Chlordane
 R.T.: 6.237 min
 Delta R.T.: 0.000 min
 Response: 61876205
 Conc: 23.62 ng/ml



#12 4,4'-DDE
 R.T.: 5.720 min
 Delta R.T.: 0.000 min
 Response: 310474672
 Conc: 22.49 ng/ml



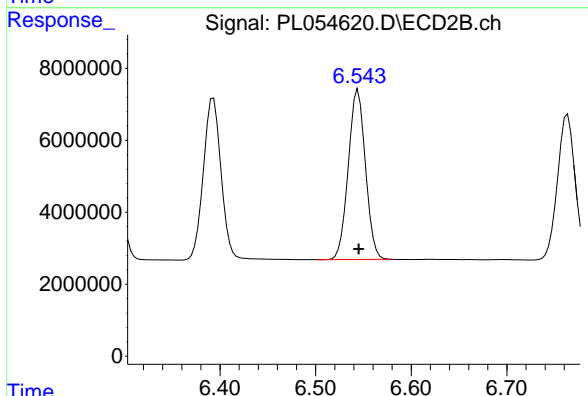
#12 4,4'-DDE
 R.T.: 6.393 min
 Delta R.T.: 0.000 min
 Response: 57612102
 Conc: 23.30 ng/ml



#13 Dieldrin

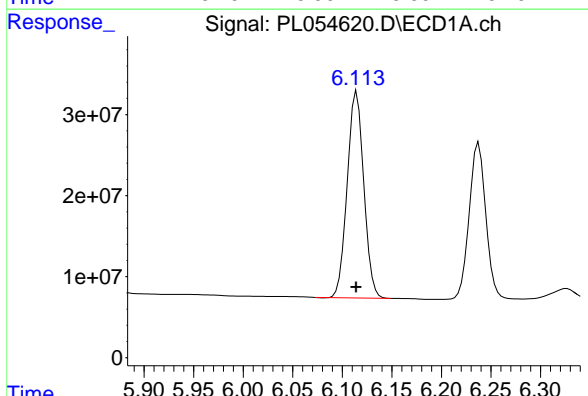
R.T.: 5.856 min
 Delta R.T.: 0.000 min
 Response: 335746549
 Conc: 22.61 ng/ml

Instrument :
 ECD_L
 ClientSampleId :
 PSTDICC025



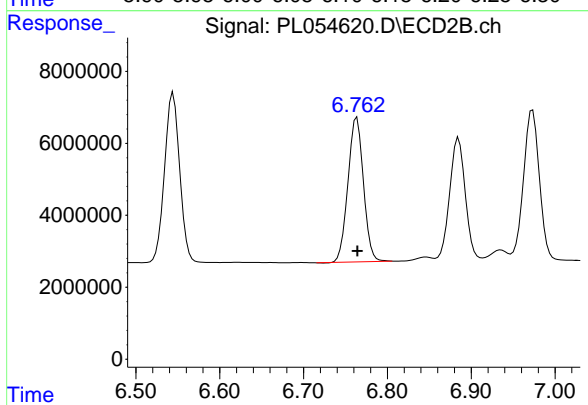
#13 Dieldrin

R.T.: 6.545 min
 Delta R.T.: 0.000 min
 Response: 59169692
 Conc: 23.22 ng/ml



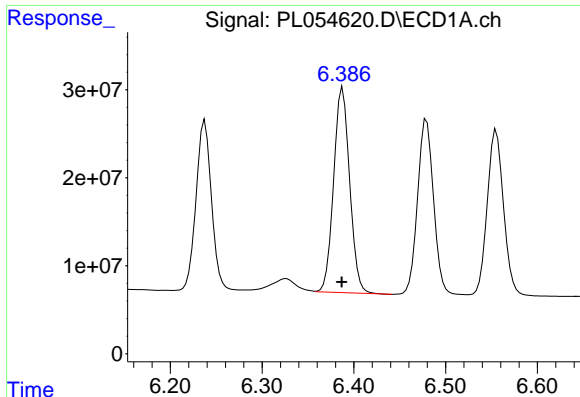
#14 Endrin

R.T.: 6.115 min
 Delta R.T.: 0.000 min
 Response: 296949617
 Conc: 22.52 ng/ml



#14 Endrin

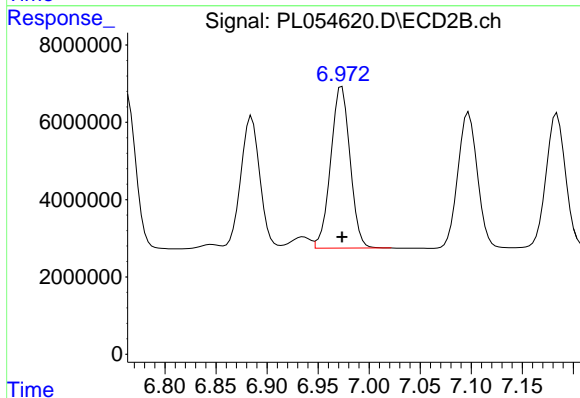
R.T.: 6.764 min
 Delta R.T.: 0.000 min
 Response: 51755206
 Conc: 23.37 ng/ml



#15 Endosulfan II

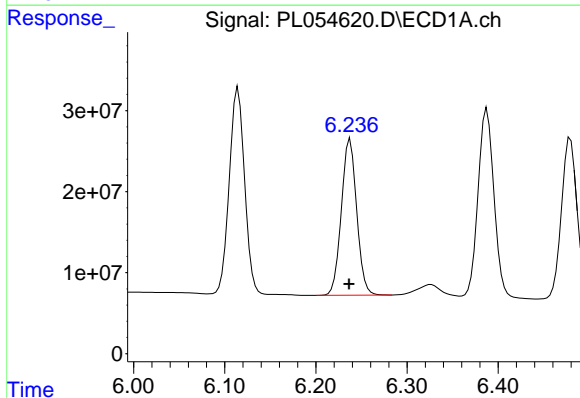
R.T.: 6.388 min
 Delta R.T.: 0.000 min
 Response: 283519356
 Conc: 22.91 ng/ml

Instrument :
 ECD_L
 ClientSampleId :
 PSTDICC025



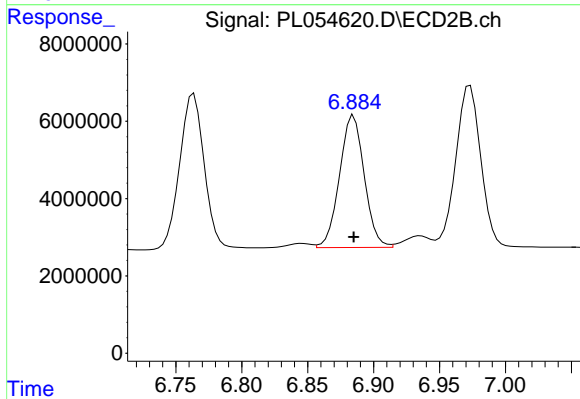
#15 Endosulfan II

R.T.: 6.973 min
 Delta R.T.: 0.000 min
 Response: 55334809
 Conc: 23.99 ng/ml



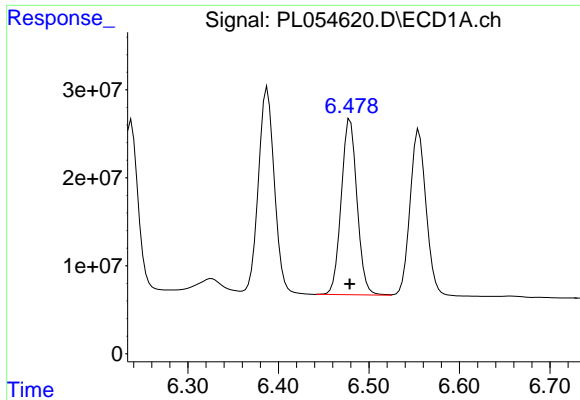
#16 4,4'-DDD

R.T.: 6.238 min
 Delta R.T.: 0.001 min
 Response: 225276280
 Conc: 22.46 ng/ml



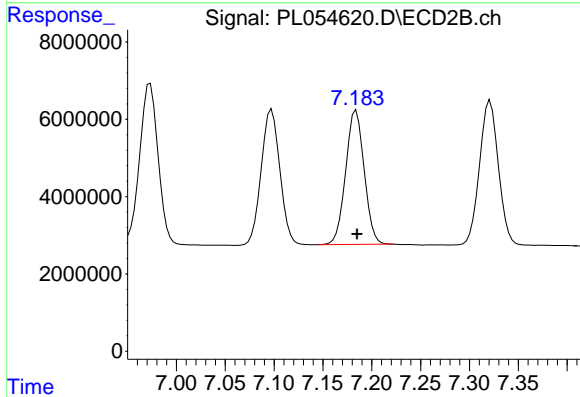
#16 4,4'-DDD

R.T.: 6.885 min
 Delta R.T.: 0.000 min
 Response: 44604465
 Conc: 23.42 ng/ml

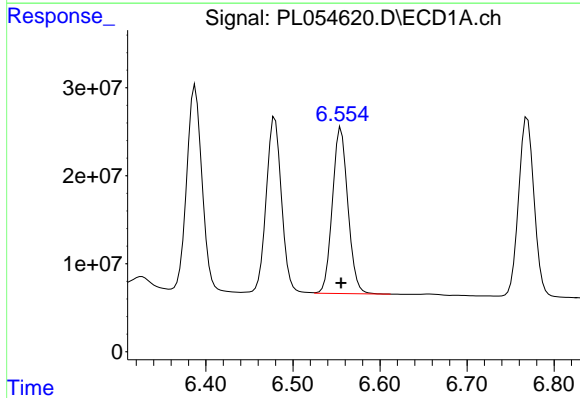


#17 4,4'-DDT
 R.T.: 6.479 min
 Delta R.T.: 0.000 min
 Response: 242344721
 Conc: 21.95 ng/ml

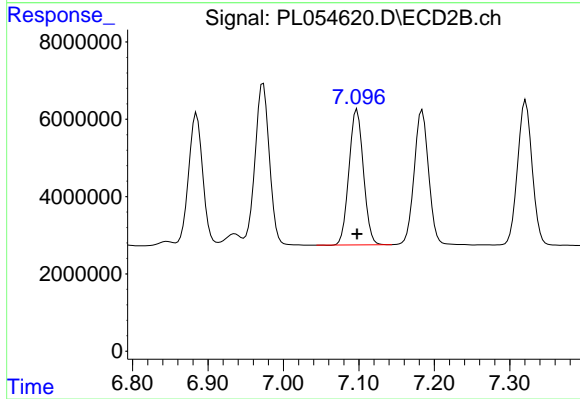
Instrument :
 ECD_L
 ClientSampleId :
 PSTDICC025



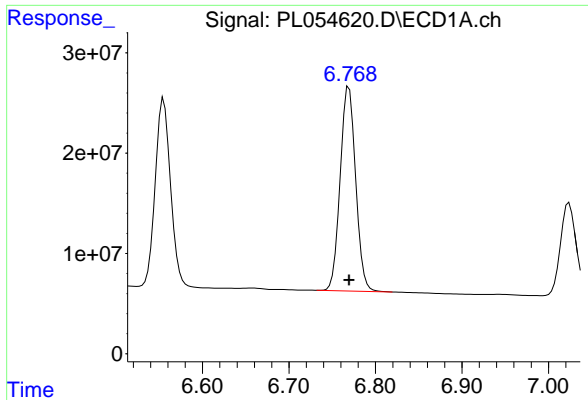
#17 4,4'-DDT
 R.T.: 7.184 min
 Delta R.T.: 0.000 min
 Response: 45832359
 Conc: 23.06 ng/ml



#18 Endrin aldehyde
 R.T.: 6.555 min
 Delta R.T.: 0.000 min
 Response: 232553074
 Conc: 23.15 ng/ml



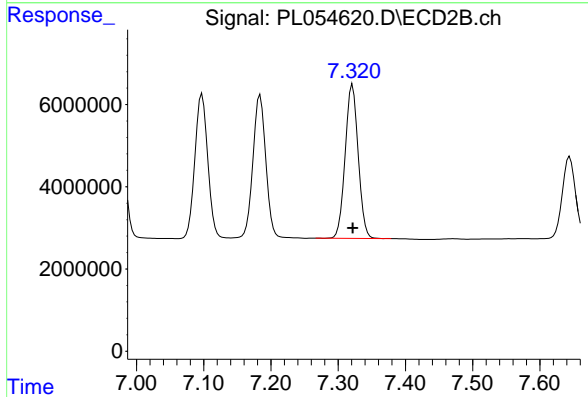
#18 Endrin aldehyde
 R.T.: 7.098 min
 Delta R.T.: 0.000 min
 Response: 46602376
 Conc: 24.15 ng/ml



#19 Endosulfan Sulfate

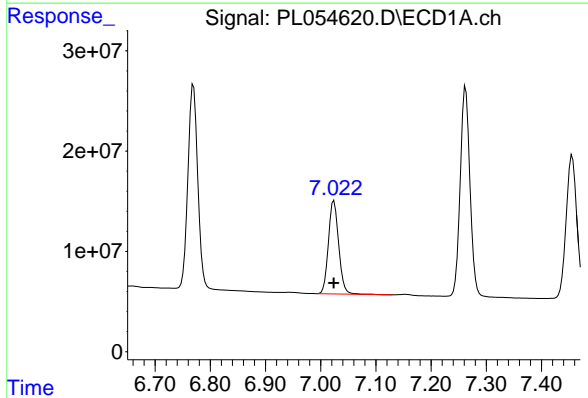
R.T.: 6.769 min
 Delta R.T.: 0.000 min
 Response: 251921366
 Conc: 23.08 ng/ml

Instrument :
 ECD_L
 ClientSampleId :
 PSTDICC025



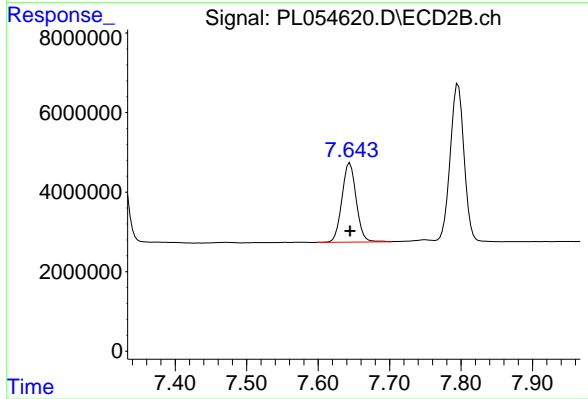
#19 Endosulfan Sulfate

R.T.: 7.321 min
 Delta R.T.: 0.000 min
 Response: 50202452
 Conc: 23.97 ng/ml



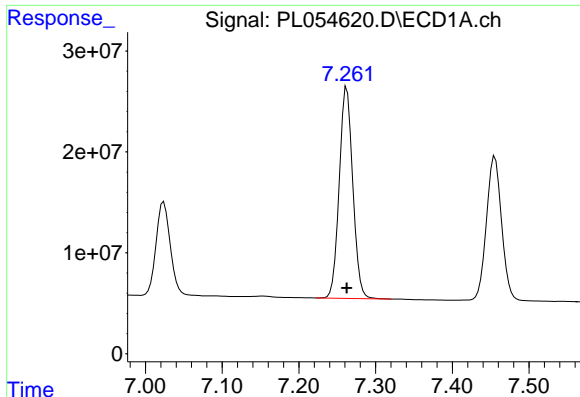
#20 Methoxychlor

R.T.: 7.024 min
 Delta R.T.: 0.000 min
 Response: 120186567
 Conc: 23.61 ng/ml



#20 Methoxychlor

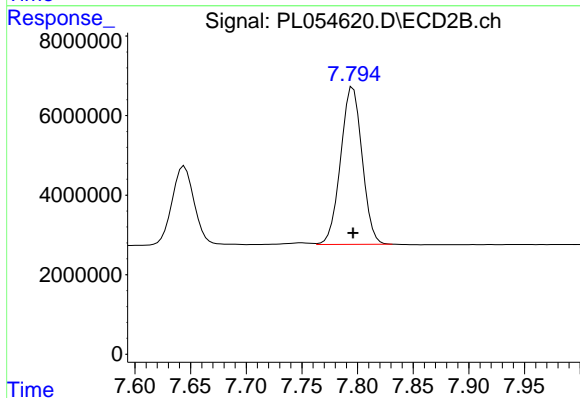
R.T.: 7.644 min
 Delta R.T.: 0.000 min
 Response: 27706669
 Conc: 24.44 ng/ml



#21 Endrin ketone

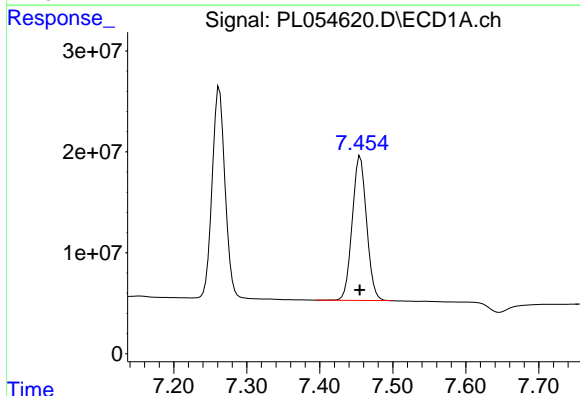
R.T.: 7.262 min
Delta R.T.: 0.000 min
Response: 256641226
Conc: 23.04 ng/ml

Instrument :
ECD_L
ClientSampled :
PSTDICC025



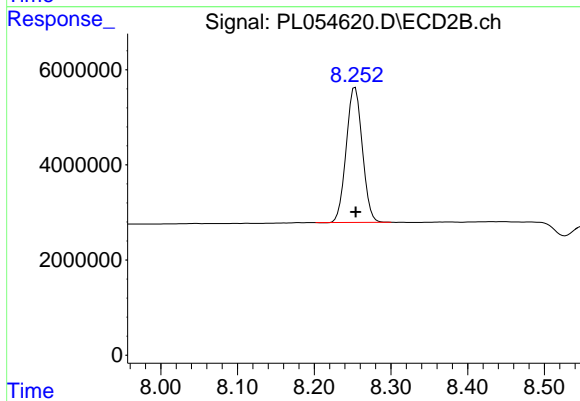
#21 Endrin ketone

R.T.: 7.796 min
Delta R.T.: 0.000 min
Response: 53131155
Conc: 23.73 ng/ml



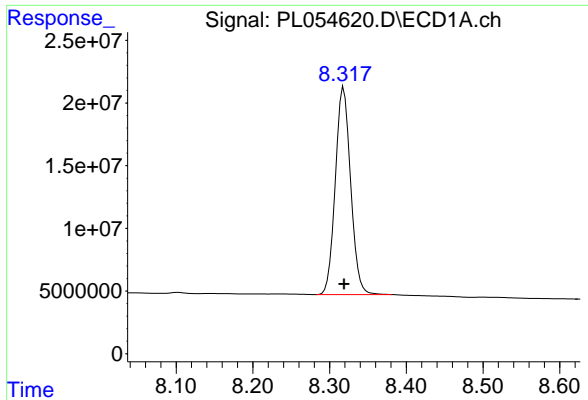
#22 Mirex

R.T.: 7.456 min
Delta R.T.: 0.000 min
Response: 195664628
Conc: 24.30 ng/ml



#22 Mirex

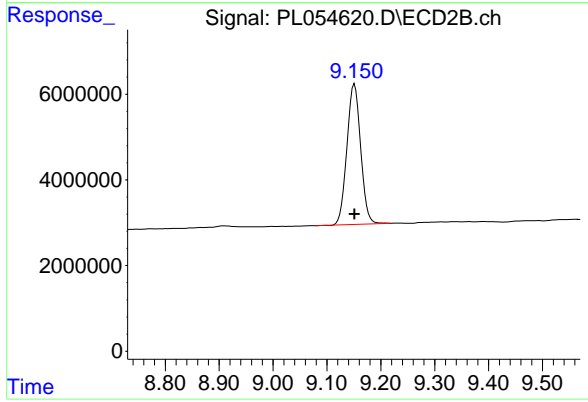
R.T.: 8.253 min
Delta R.T.: 0.000 min
Response: 41733197
Conc: 24.48 ng/ml



#28 Decachlorobiphenyl

R.T.: 8.318 min
Delta R.T.: 0.000 min
Response: 229562701
Conc: 24.37 ng/ml

Instrument :
ECD_L
ClientSampleId :
PSTDIC025



#28 Decachlorobiphenyl

R.T.: 9.151 min
Delta R.T.: 0.000 min
Response: 58166039
Conc: 24.54 ng/ml