

Data Path : Z:\pestpcbsrv\HPCHEM1\ECD_L\Data\PL112619\
 Data File : PL054623.D
 Signal(s) : Signal #1: ECD1A.ch Signal #2: ECD2B.ch
 Acq On : 26 Nov 2019 12:48
 Operator : SG\AJ
 Sample : PTOXICC500
 Misc :
 ALS Vial : 11 Sample Multiplier: 1

Instrument :
 ECD_L
 ClientSampleId :
 PTOXICC500

Integration File signal 1: autoint1.e
 Integration File signal 2: autoint2.e
 Quant Time: Nov 27 02:17:44 2019
 Quant Method : Z:\pestpcbsrv\HPCHEM1\ECD_L\methods\LTX112619.M
 Quant Title : GC Extractables
 QLast Update : Wed Nov 27 02:16:42 2019
 Response via : Initial Calibration
 Integrator: ChemStation

Volume Inj. : 2 µl
 Signal #1 Phase : Rtx-CLPesticide 1 Signal #2 Phase: Rtx-CLPesticide 1
 Signal #1 Info : 30M x 0.32mm x0.3 Signal #2 Info : 30M x 0.32mm x 0.25µm

Compound	RT#1	RT#2	Resp#1	Resp#2	ng/ml	ng/ml

System Monitoring Compounds						
1) SA Tetrachlo...	3.538	4.051	546.9E6	116.0E6	50.000	50.000
7) SA Decachlor...	8.319	9.151	453.5E6	110.6E6	50.000	50.000
Target Compounds						
2) Toxaphene-1	5.816	6.445	40634528	5863783	500.000	500.000
3) Toxaphene-2	6.420	7.144	95037078	10788248	500.000	500.000
4) Toxaphene-3	6.810	7.220	30570427	27510280	500.000	500.000
5) Toxaphene-4	7.091	7.306	31354472	17177668	500.000	500.000
6) Toxaphene-5	7.155	7.723	91905656	12595527	500.000	500.000

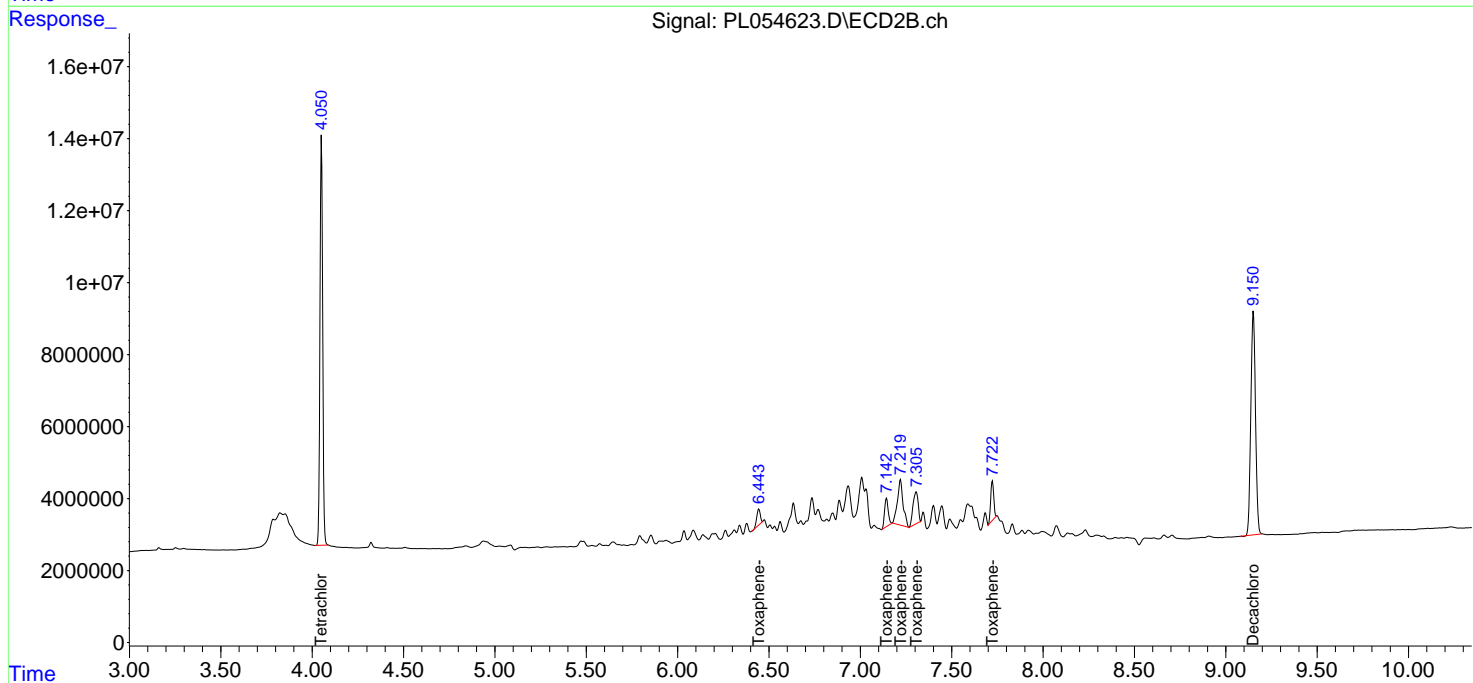
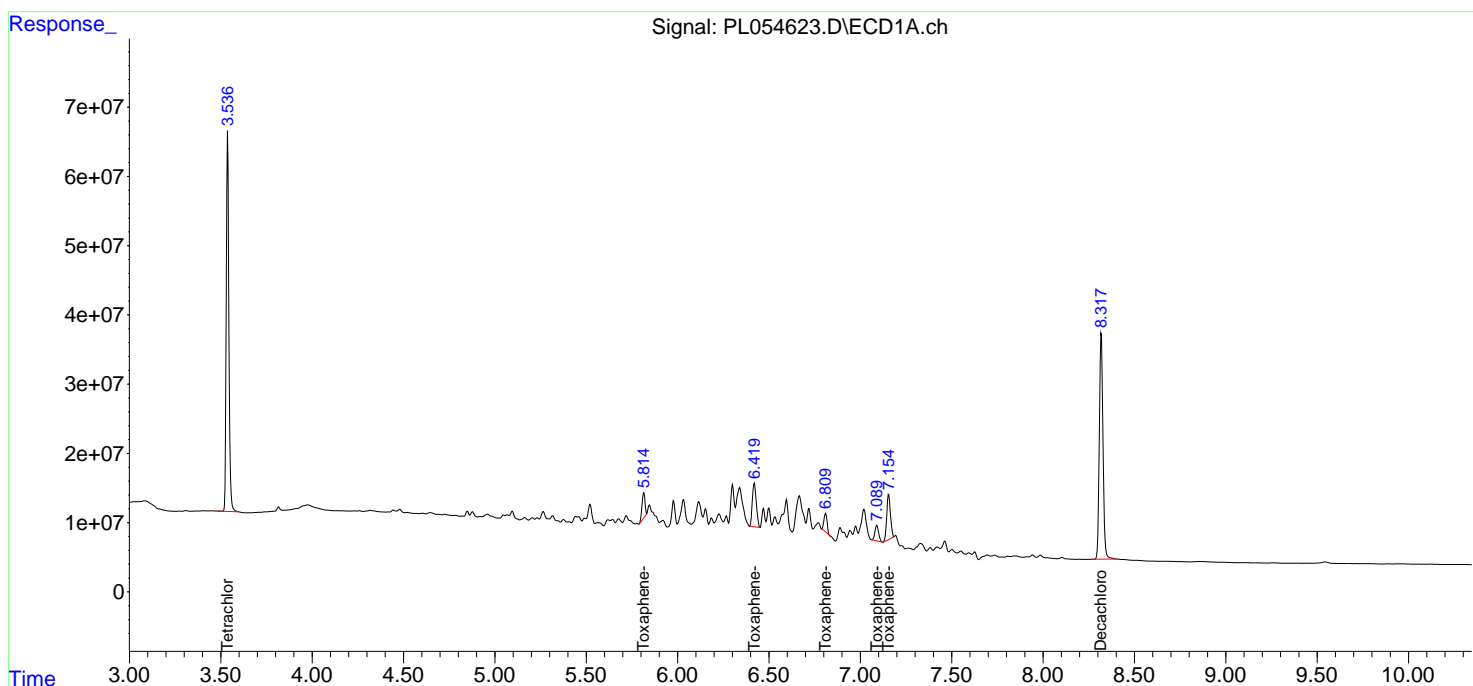
(f)=RT Delta > 1/2 Window (#)=Amounts differ by > 25% (m)=manual int.

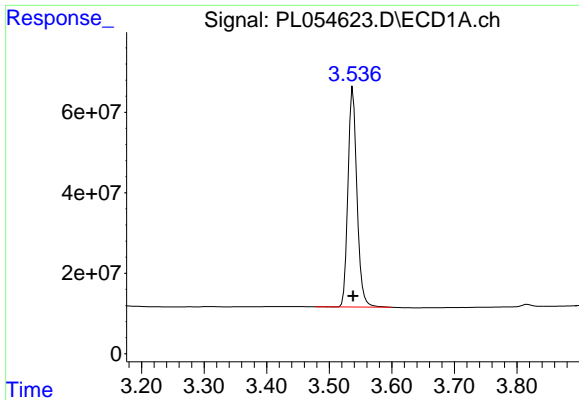
Data Path : Z:\pestpcbsrv\HPCHEM1\ECD_L\Data\PL112619\
 Data File : PL054623.D
 Signal(s) : Signal #1: ECD1A.ch Signal #2: ECD2B.ch
 Acq On : 26 Nov 2019 12:48
 Operator : SG\AJ
 Sample : PTOXICC500
 Misc :
 ALS Vial : 11 Sample Multiplier: 1

Instrument :
 ECD_L
 ClientSampled :
 PTOXICC500

Integration File signal 1: autoint1.e
 Integration File signal 2: autoint2.e
 Quant Time: Nov 27 02:17:44 2019
 Quant Method : Z:\pestpcbsrv\HPCHEM1\ECD_L\methods\LTX112619.M
 Quant Title : GC Extractables
 QLast Update : Wed Nov 27 02:16:42 2019
 Response via : Initial Calibration
 Integrator: ChemStation

Volume Inj. : 2 µl
 Signal #1 Phase : Rtx-CLPesticide 1 Signal #2 Phase: Rtx-CLPesticide 1
 Signal #1 Info : 30M x 0.32mm x0.3 Signal #2 Info : 30M x 0.32mm x 0.25µm

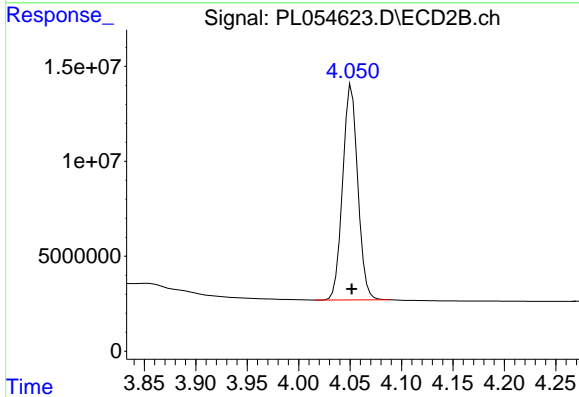




#1 Tetrachloro-m-xylene

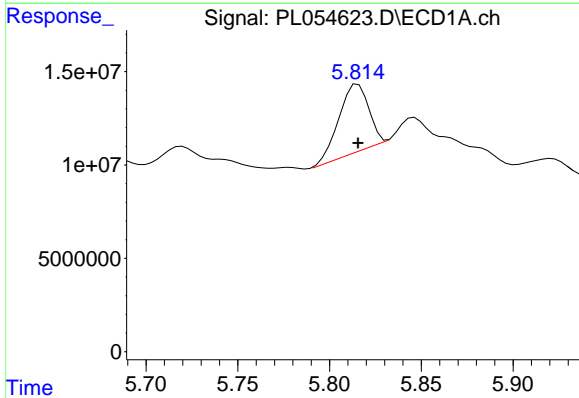
R.T.: 3.538 min
 Delta R.T.: 0.000 min
 Response: 546941335
 Conc: 50.00 ng/ml

Instrument :
 ECD_L
 ClientSampled :
 PTOXICC500



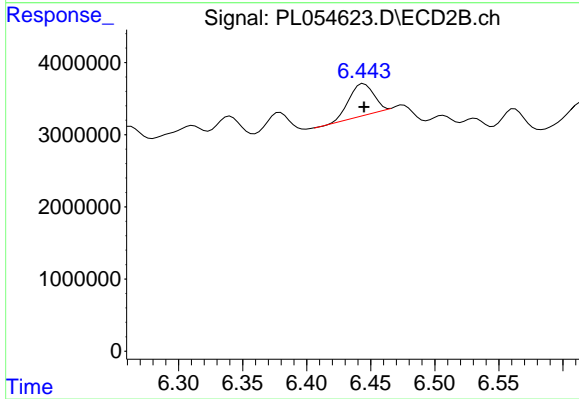
#1 Tetrachloro-m-xylene

R.T.: 4.051 min
 Delta R.T.: 0.000 min
 Response: 116038141
 Conc: 50.00 ng/ml



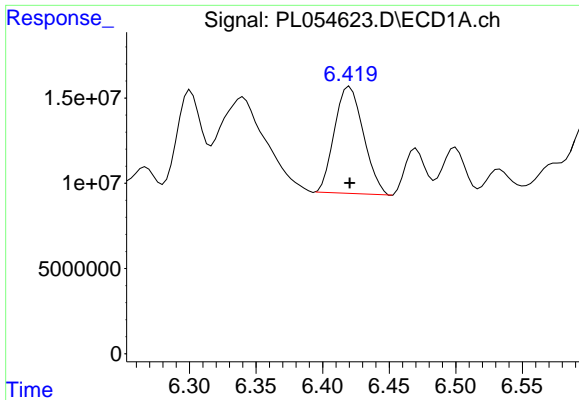
#2 Toxaphene-1

R.T.: 5.816 min
 Delta R.T.: 0.000 min
 Response: 40634528
 Conc: 500.00 ng/ml



#2 Toxaphene-1

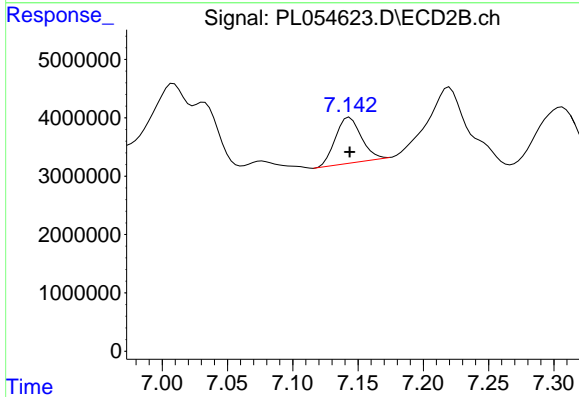
R.T.: 6.445 min
 Delta R.T.: 0.000 min
 Response: 5863783
 Conc: 500.00 ng/ml



#3 Toxaphene-2

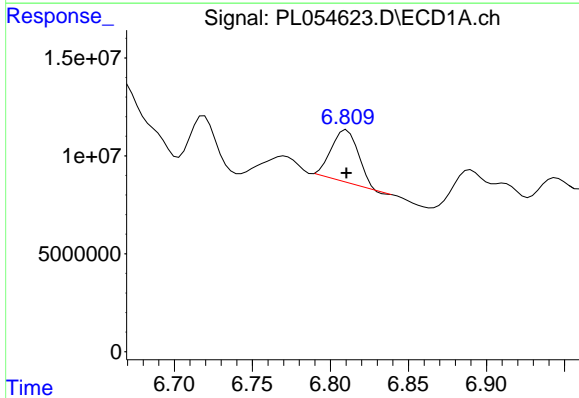
R.T.: 6.420 min
 Delta R.T.: 0.000 min
 Response: 95037078
 Conc: 500.00 ng/ml

Instrument :
 ECD_L
 ClientSampleId :
 PTOXICC500



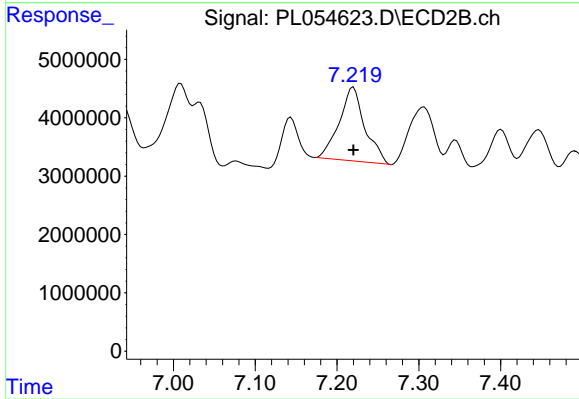
#3 Toxaphene-2

R.T.: 7.144 min
 Delta R.T.: 0.000 min
 Response: 10788248
 Conc: 500.00 ng/ml



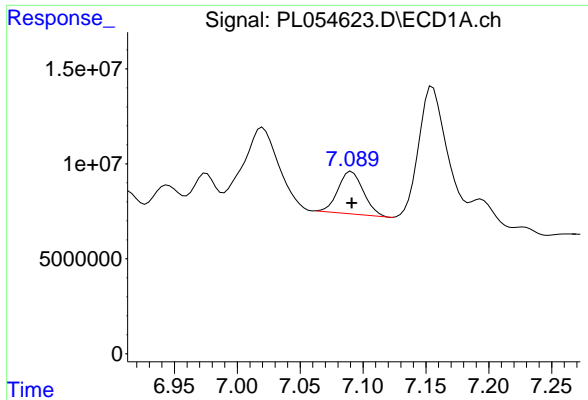
#4 Toxaphene-3

R.T.: 6.810 min
 Delta R.T.: 0.000 min
 Response: 30570427
 Conc: 500.00 ng/ml



#4 Toxaphene-3

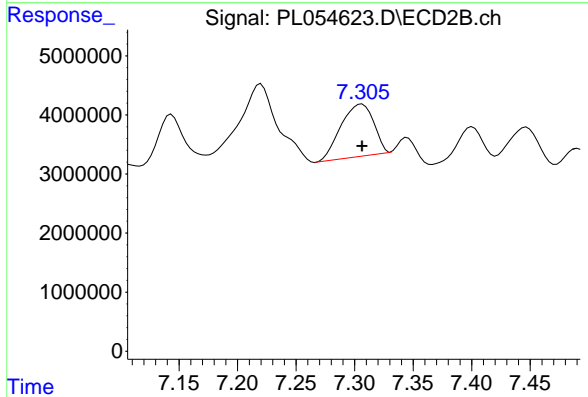
R.T.: 7.220 min
 Delta R.T.: 0.000 min
 Response: 27510280
 Conc: 500.00 ng/ml



#5 Toxaphene-4

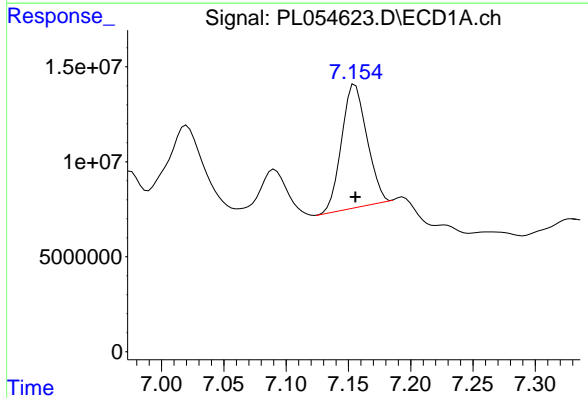
R.T.: 7.091 min
 Delta R.T.: 0.000 min
 Response: 31354472
 Conc: 500.00 ng/ml

Instrument :
 ECD_L
 ClientSampleId :
 PTOXICC500



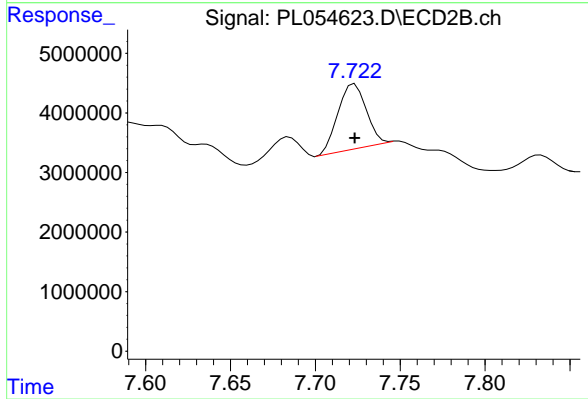
#5 Toxaphene-4

R.T.: 7.306 min
 Delta R.T.: 0.000 min
 Response: 17177668
 Conc: 500.00 ng/ml



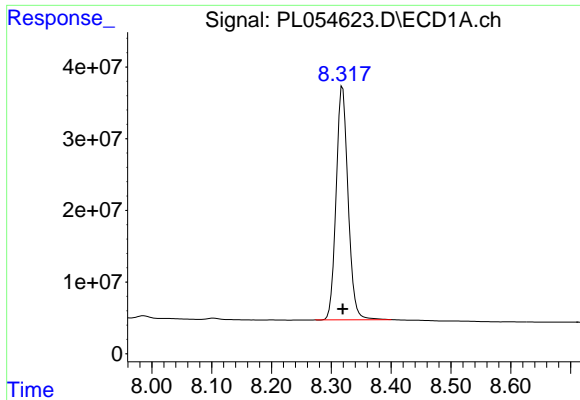
#6 Toxaphene-5

R.T.: 7.155 min
 Delta R.T.: 0.000 min
 Response: 91905656
 Conc: 500.00 ng/ml



#6 Toxaphene-5

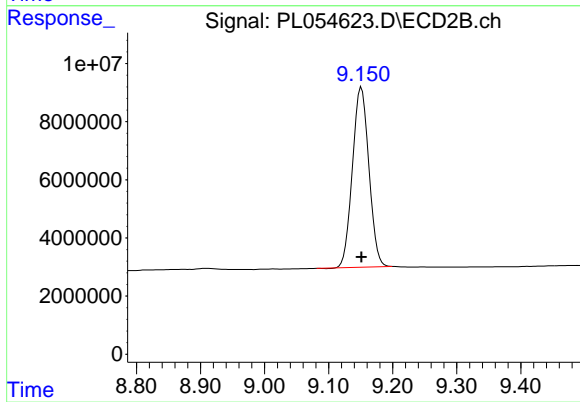
R.T.: 7.723 min
 Delta R.T.: 0.000 min
 Response: 12595527
 Conc: 500.00 ng/ml



#7 Decachlorobiphenyl

R.T.: 8.319 min
Delta R.T.: 0.000 min
Response: 453468624
Conc: 50.00 ng/ml

Instrument :
ECD_L
ClientSampleId :
PTOXICC500



#7 Decachlorobiphenyl

R.T.: 9.151 min
Delta R.T.: 0.000 min
Response: 110619756
Conc: 50.00 ng/ml