

Data Path : Z:\pestpcbsrv\HPCHEM1\ECD_L\Data\PL112619\
 Data File : PL054632.D
 Signal(s) : Signal #1: ECD1A.ch Signal #2: ECD2B.ch
 Acq On : 26 Nov 2019 15:44
 Operator : SG\AJ
 Sample : K5999-05MSD
 Misc :
 ALS Vial : 9 Sample Multiplier: 1

Instrument :
 ECD_L
Client Sampled :
 IDLEWILD-BH-05MSD

Manual Integrations
APPROVED
 Ankita
 11/27/2019 11:35:28 AM

Integration File signal 1: autoint1.e
 Integration File signal 2: autoint2.e
 Quant Time: Nov 27 02:43:41 2019
 Quant Method : Z:\pestpcbsrv\HPCHEM1\ECD_L\methods\PL112619.M
 Quant Title : GC Extractables
 QLast Update : Wed Nov 27 01:19:55 2019
 Response via : Initial Calibration
 Integrator: ChemStation

Volume Inj. : 1 µl
 Signal #1 Phase : ZB-MR2 Signal #2 Phase: ZB-MR1
 Signal #1 Info : 30M x 0.32mm x0.2 Signal #2 Info : 30M x 0.32mm x0.5µm

	Compound	RT#1	RT#2	Resp#1	Resp#2	ng/ml	ng/ml

System Monitoring Compounds							
1)	SA Tetrachlo...	3.538	4.051	190.6E6	44305880	16.383	17.363
28)	SA Decachlor...	8.320	9.151	94863825	23130342	9.906	9.648
Target Compounds							
2)	A alpha-BHC	3.981	4.443	1035.5E6	203.4E6	54.548	57.407
3)	MA gamma-BHC...	4.268	4.729	937.5E6	188.1E6	55.000	57.695
4)	MA Heptachlor	4.574	5.238	981.3E6	173.7E6	55.650	57.570
5)	MB Aldrin	4.825	5.544	908.2E6	162.4E6	55.720	58.295
6)	B beta-BHC	4.518	4.899	395.7E6	80562893	53.348	57.209
7)	B delta-BHC	4.726	5.117	885.3E6	145.4E6	54.462	54.534
8)	B Heptachlo...	5.269	5.930	848.9E6	145.5E6	56.118m	58.234
9)	A Endosulfan I	5.612	6.288	801.0E6	141.8E6	58.735	57.334
10)	B gamma-Chl...	5.497	6.165	852.5E6	152.3E6	56.219m	57.819
11)	B alpha-Chl...	5.556	6.237	819.7E6	151.7E6	55.586m	57.765
12)	B 4,4'-DDE	5.720	6.394	764.5E6	145.4E6	57.461	58.723
13)	MA Dieldrin	5.857	6.546	899.3E6	163.6E6	63.420	64.285
14)	MA Endrin	6.115	6.764	735.0E6	129.6E6	57.720	58.503
15)	B Endosulfa...	6.388	6.973	679.8E6	137.3E6	56.180	58.411
16)	A 4,4'-DDD	6.237	6.885	560.7E6	115.7E6	57.404	60.252
17)	MA 4,4'-DDT	6.480	7.185	629.3E6	120.2E6	60.065	60.683
18)	B Endrin al...	6.556	7.098	544.7E6	114.0E6	55.002	58.149
19)	B Endosulfa...	6.770	7.322	593.5E6	122.1E6	55.423	57.591
20)	A Methoxychlor	7.025	7.645	299.8E6	64053680	59.826	56.154
21)	B Endrin ke...	7.264	7.796	630.0E6	132.8E6	57.960	58.981
22)	Mirex	7.456	8.254	495.5E6	106.6E6	61.036	61.663

(f)=RT Delta > 1/2 Window (#)=Amounts differ by > 25% (m)=manual int.

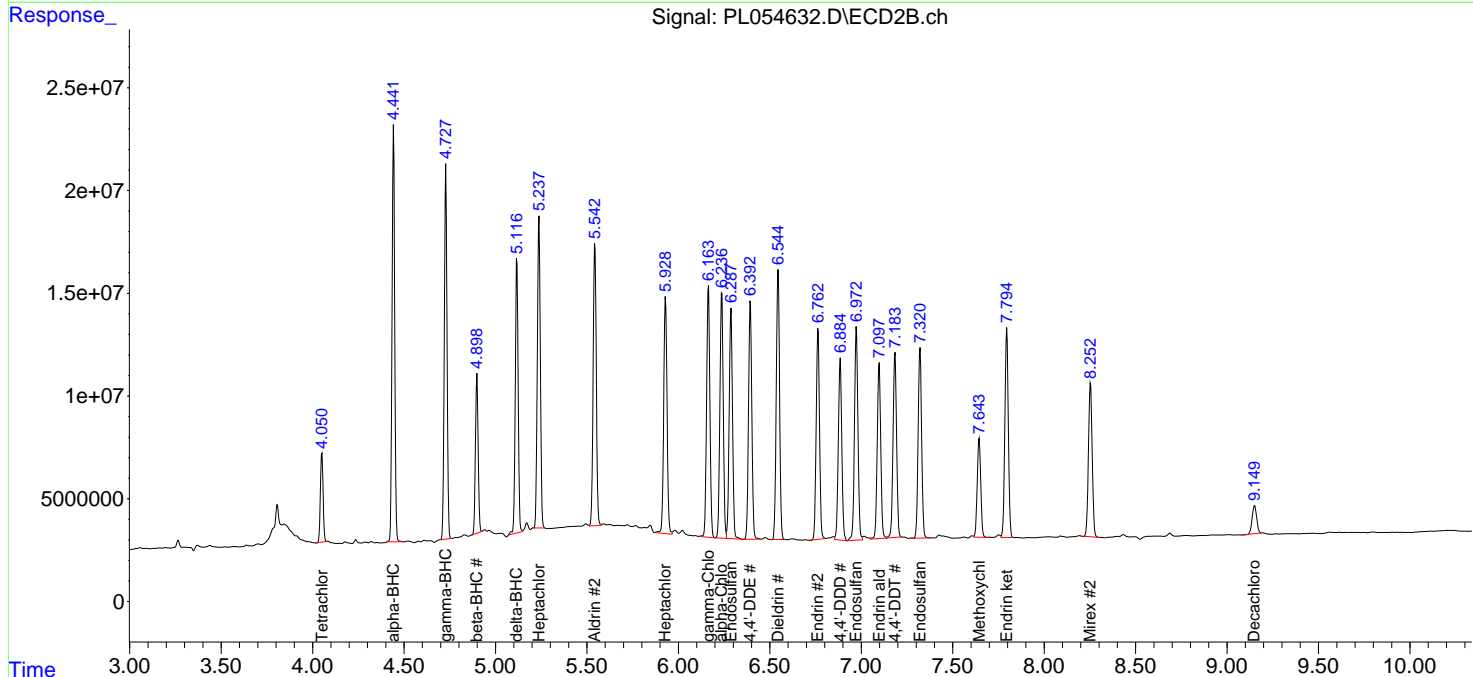
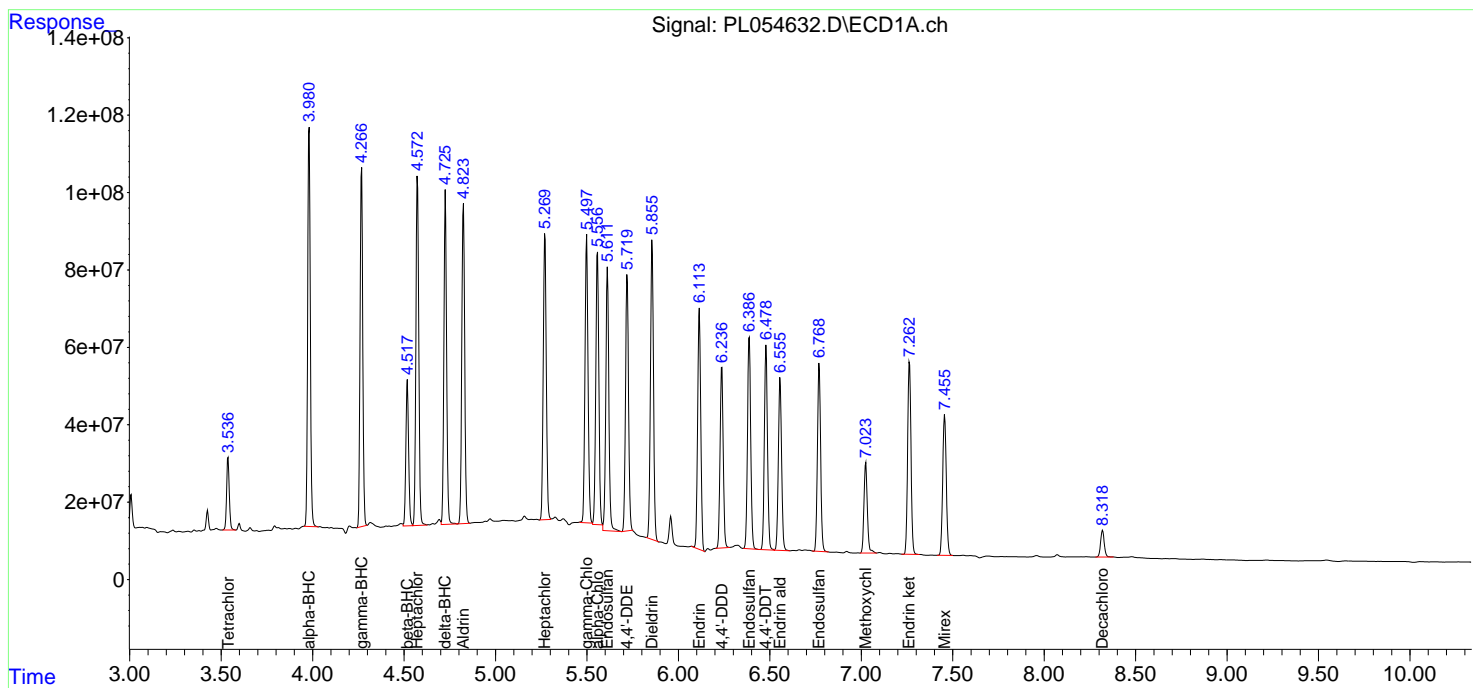
Data Path : Z:\pestpcbsrv\HPCHEM1\ECD_L\Data\PL112619\
 Data File : PL054632.D
 Signal(s) : Signal #1: ECD1A.ch Signal #2: ECD2B.ch
 Acq On : 26 Nov 2019 15:44
 Operator : SG\AJ
 Sample : K5999-05MSD
 Misc :
 ALS Vial : 9 Sample Multiplier: 1

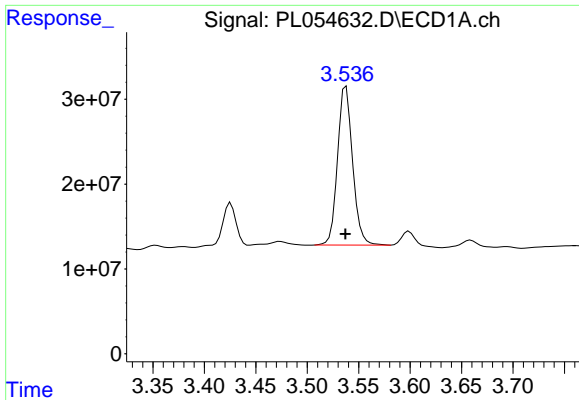
Instrument :
 ECD_L
 Client Sampled :
 IDLEWILD-BH-05MSD

Manual Integrations
APPROVED
 Ankita
 11/27/2019 11:35:28 AM

Integration File signal 1: autoint1.e
 Integration File signal 2: autoint2.e
 Quant Time: Nov 27 02:43:41 2019
 Quant Method : Z:\pestpcbsrv\HPCHEM1\ECD_L\methods\PL112619.M
 Quant Title : GC Extractables
 QLast Update : Wed Nov 27 01:19:55 2019
 Response via : Initial Calibration
 Integrator: ChemStation

Volume Inj. : 1 µl
 Signal #1 Phase : ZB-MR2 Signal #2 Phase: ZB-MR1
 Signal #1 Info : 30M x 0.32mm x0.2 Signal #2 Info : 30M x 0.32mm x0.5µm

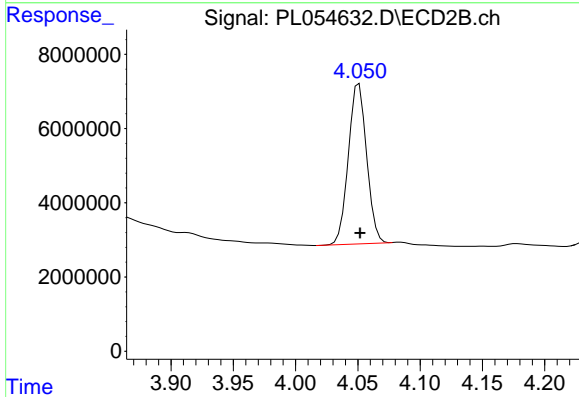




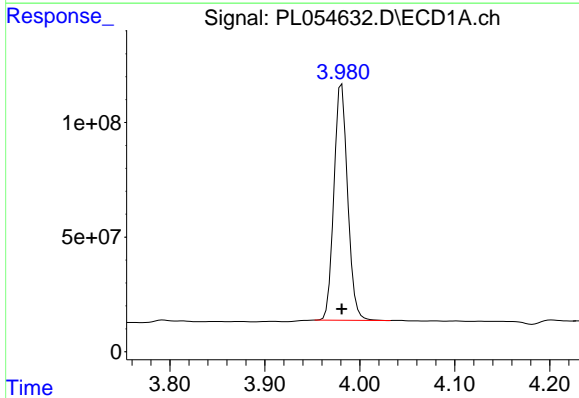
#1 Tetrachloro-m-xylene
 R.T.: 3.538 min
 Delta R.T.: 0.000 min
 Response: 190605642
 Conc: 16.38 ng/ml

Instrument :
 ECD_L
 ClientSampleId :
 IDLEWILD-BH-05MSD

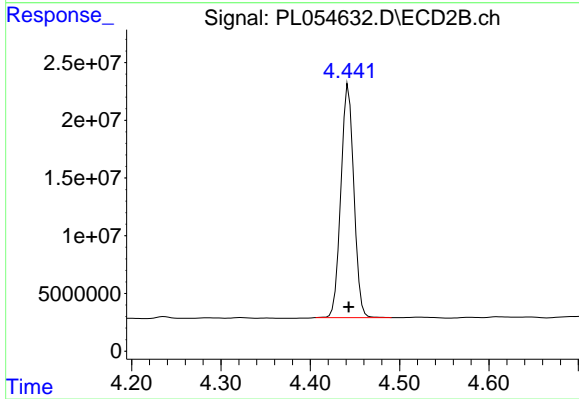
Manual Integrations
 APPROVED
 Ankita
 11/27/2019 11:35:28 AM



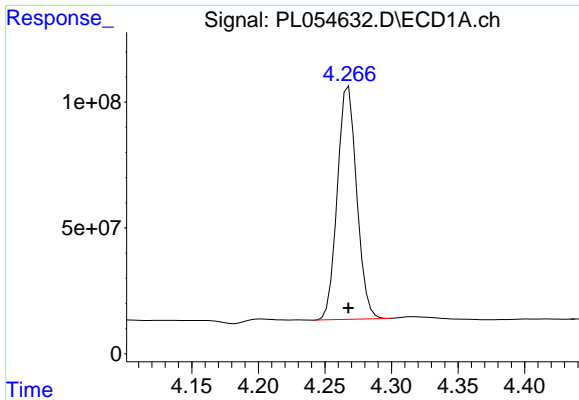
#1 Tetrachloro-m-xylene
 R.T.: 4.051 min
 Delta R.T.: 0.000 min
 Response: 44305880
 Conc: 17.36 ng/ml



#2 alpha-BHC
 R.T.: 3.981 min
 Delta R.T.: 0.000 min
 Response: 1035545070
 Conc: 54.55 ng/ml



#2 alpha-BHC
 R.T.: 4.443 min
 Delta R.T.: 0.000 min
 Response: 203379124
 Conc: 57.41 ng/ml



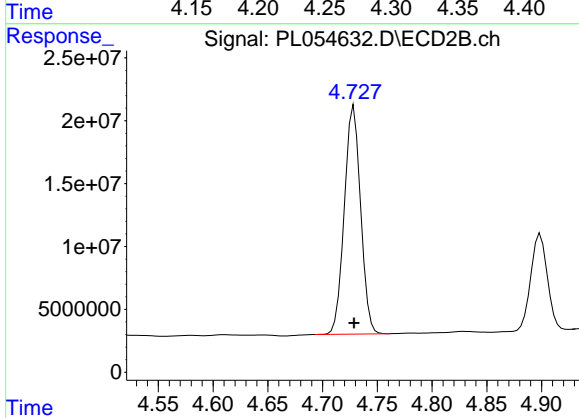
#3 gamma-BHC (Lindane)

R.T.: 4.268 min
 Delta R.T.: 0.000 min
 Response: 937517258
 Conc: 55.00 ng/ml

Instrument :
 ECD_L
ClientSampled :
 IDLEWILD-BH-05MSD

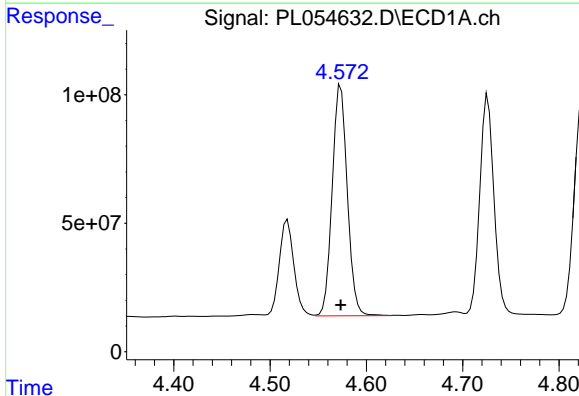
Manual Integrations
APPROVED

Ankita
 11/27/2019 11:35:28 AM



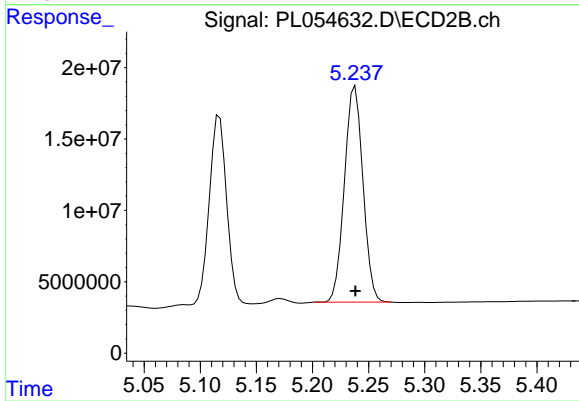
#3 gamma-BHC (Lindane)

R.T.: 4.729 min
 Delta R.T.: 0.000 min
 Response: 188118491
 Conc: 57.70 ng/ml



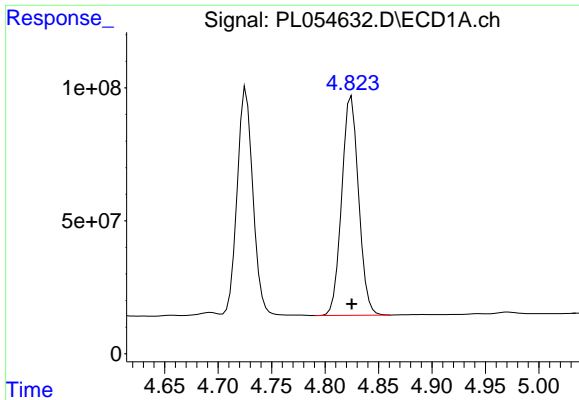
#4 Heptachlor

R.T.: 4.574 min
 Delta R.T.: 0.000 min
 Response: 981311607
 Conc: 55.65 ng/ml



#4 Heptachlor

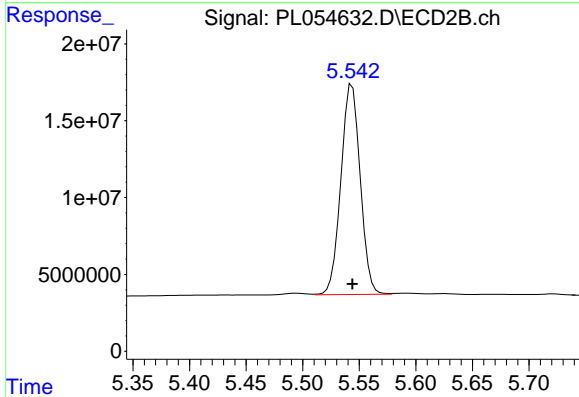
R.T.: 5.238 min
 Delta R.T.: 0.000 min
 Response: 173743998
 Conc: 57.57 ng/ml



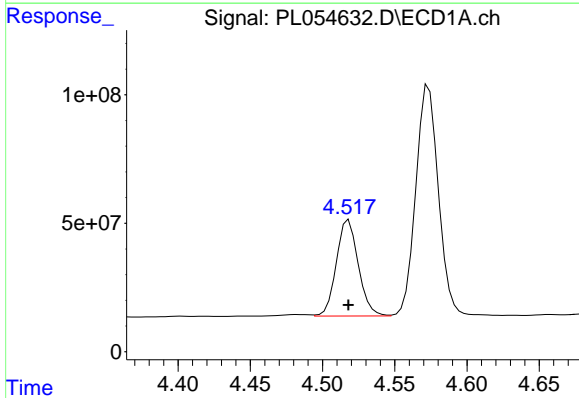
#5 Aldrin
 R.T.: 4.825 min
 Delta R.T.: 0.000 min
 Response: 908227250
 Conc: 55.72 ng/ml

Instrument :
 ECD_L
ClientSampled :
 IDLEWILD-BH-05MSD

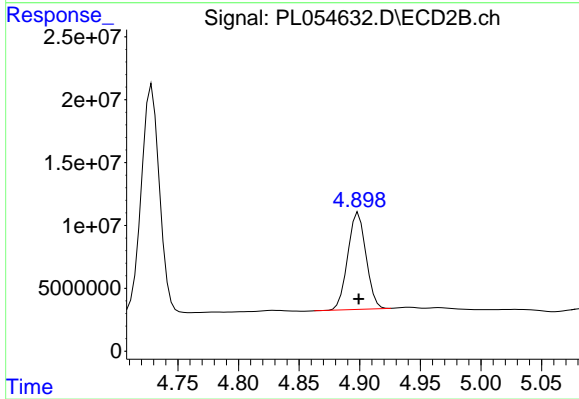
Manual Integrations
APPROVED
 Ankita
 11/27/2019 11:35:28 AM



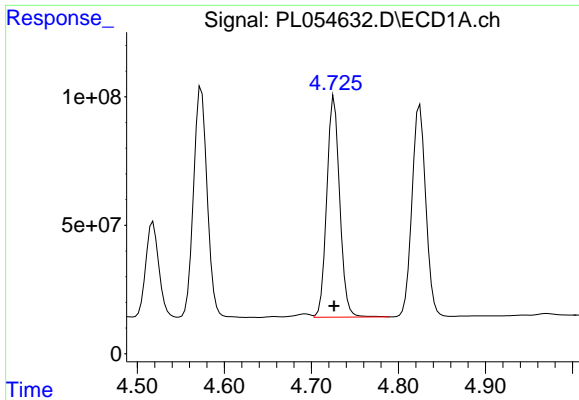
#5 Aldrin
 R.T.: 5.544 min
 Delta R.T.: 0.000 min
 Response: 162436975
 Conc: 58.29 ng/ml



#6 beta-BHC
 R.T.: 4.518 min
 Delta R.T.: 0.000 min
 Response: 395678224
 Conc: 53.35 ng/ml



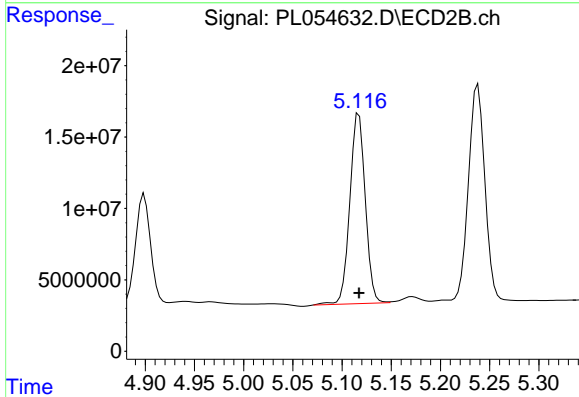
#6 beta-BHC
 R.T.: 4.899 min
 Delta R.T.: 0.000 min
 Response: 80562893
 Conc: 57.21 ng/ml



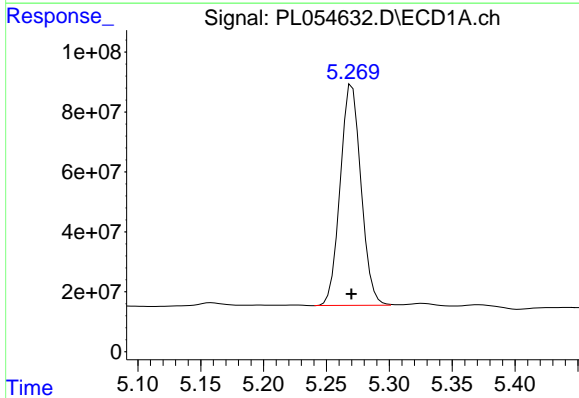
#7 delta-BHC
 R.T.: 4.726 min
 Delta R.T.: 0.000 min
 Response: 885290201
 Conc: 54.46 ng/ml

Instrument :
 ECD_L
ClientSampled :
 IDLEWILD-BH-05MSD

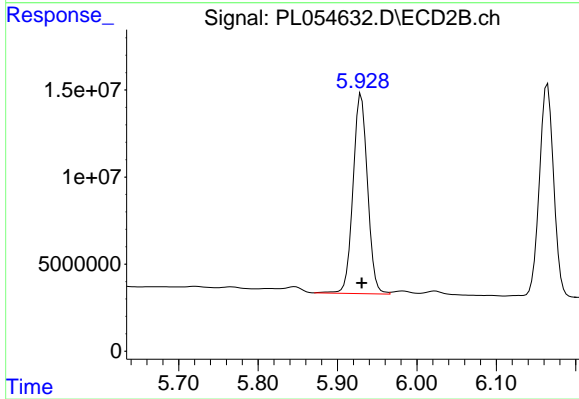
Manual Integrations
APPROVED
 Ankita
 11/27/2019 11:35:28 AM



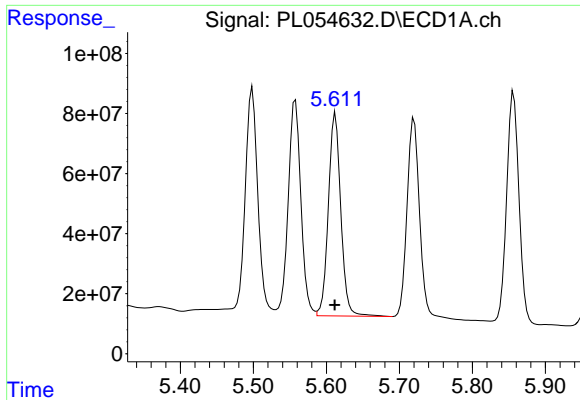
#7 delta-BHC
 R.T.: 5.117 min
 Delta R.T.: 0.000 min
 Response: 145399109
 Conc: 54.53 ng/ml



#8 Heptachlor epoxide
 R.T.: 5.269 min
 Delta R.T.: 0.000 min
 Response: 848859773
 Conc: 56.12 ng/ml m



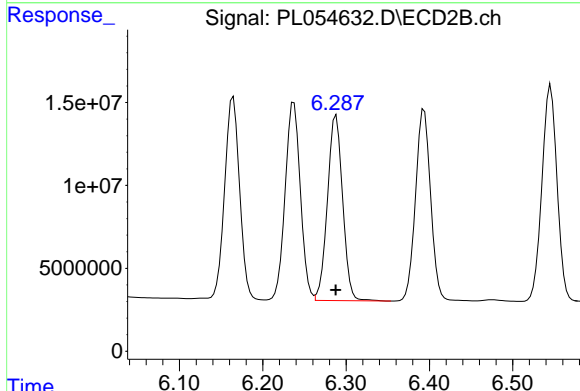
#8 Heptachlor epoxide
 R.T.: 5.930 min
 Delta R.T.: 0.000 min
 Response: 145479591
 Conc: 58.23 ng/ml



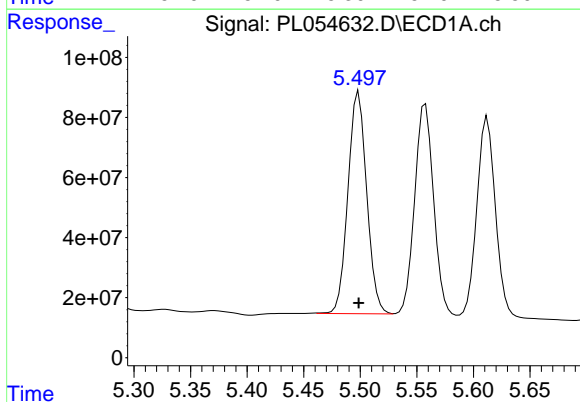
#9 Endosulfan I
 R.T.: 5.612 min
 Delta R.T.: 0.000 min
 Response: 800953202
 Conc: 58.74 ng/ml

Instrument :
 ECD_L
ClientSampleId :
 IDLEWILD-BH-05MSD

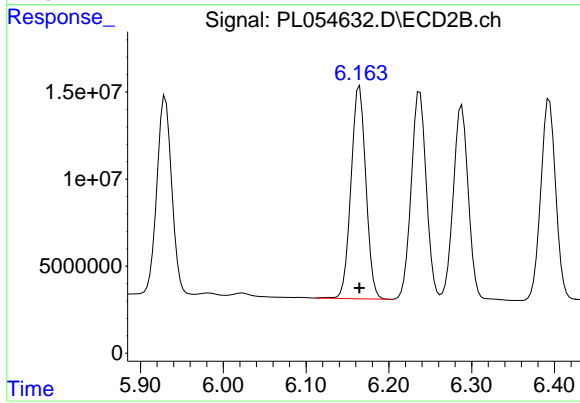
Manual Integrations
APPROVED
 Ankita
 11/27/2019 11:35:28 AM



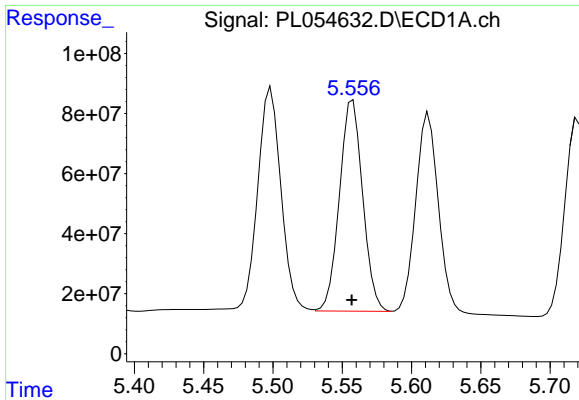
#9 Endosulfan I
 R.T.: 6.288 min
 Delta R.T.: 0.000 min
 Response: 141816049
 Conc: 57.33 ng/ml



#10 gamma-Chlordane
 R.T.: 5.497 min
 Delta R.T.: -0.001 min
 Response: 852510181
 Conc: 56.22 ng/ml m



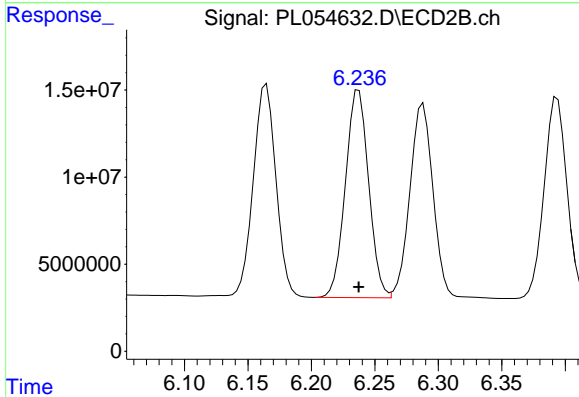
#10 gamma-Chlordane
 R.T.: 6.165 min
 Delta R.T.: 0.000 min
 Response: 152317552
 Conc: 57.82 ng/ml



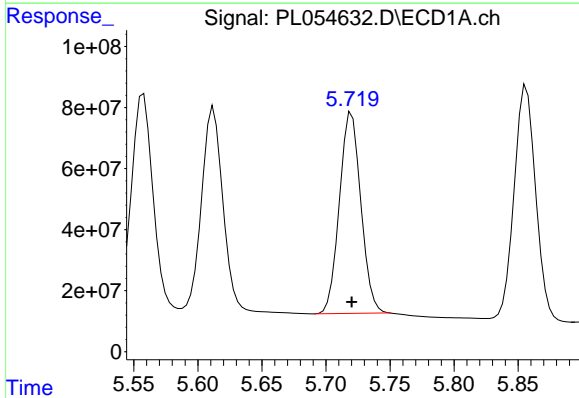
#11 alpha-Chlordane
R.T.: 5.556 min
Delta R.T.: 0.000 min
Response: 819658895
Conc: 55.59 ng/ml m

Instrument :
ECD_L
ClientSampled :
IDLEWILD-BH-05MSD

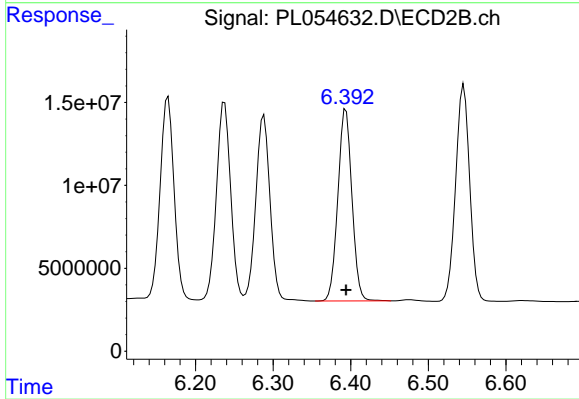
Manual Integrations
APPROVED
Ankita
11/27/2019 11:35:28 AM



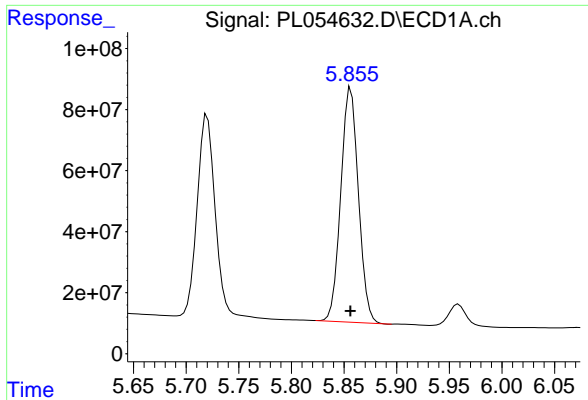
#11 alpha-Chlordane
R.T.: 6.237 min
Delta R.T.: 0.000 min
Response: 151671244
Conc: 57.76 ng/ml



#12 4,4'-DDE
R.T.: 5.720 min
Delta R.T.: 0.000 min
Response: 764500852
Conc: 57.46 ng/ml



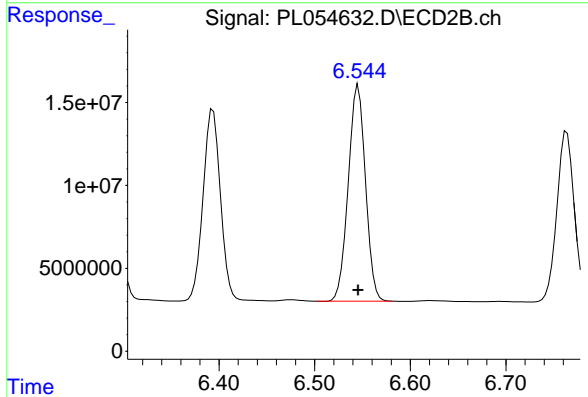
#12 4,4'-DDE
R.T.: 6.394 min
Delta R.T.: 0.000 min
Response: 145363094
Conc: 58.72 ng/ml



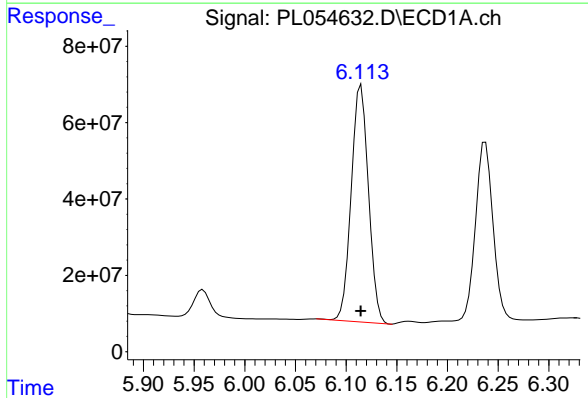
#13 Dieldrin
 R.T.: 5.857 min
 Delta R.T.: 0.000 min
 Response: 899340919
 Conc: 63.42 ng/ml

Instrument :
 ECD_L
ClientSampleId :
 IDLEWILD-BH-05MSD

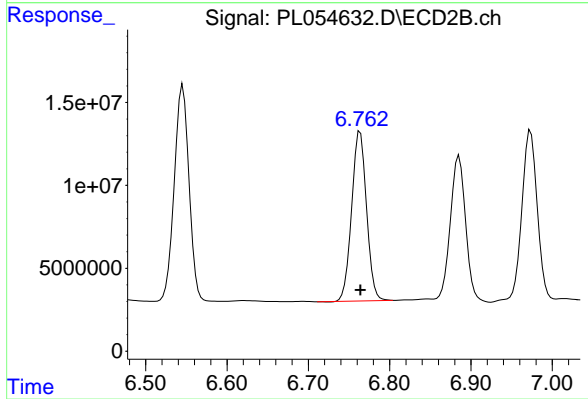
Manual Integrations
APPROVED
 Ankita
 11/27/2019 11:35:28 AM



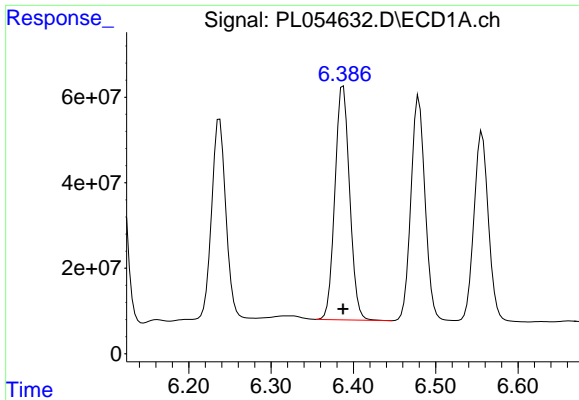
#13 Dieldrin
 R.T.: 6.546 min
 Delta R.T.: 0.000 min
 Response: 163625342
 Conc: 64.28 ng/ml



#14 Endrin
 R.T.: 6.115 min
 Delta R.T.: 0.000 min
 Response: 734984133
 Conc: 57.72 ng/ml



#14 Endrin
 R.T.: 6.764 min
 Delta R.T.: 0.000 min
 Response: 129607938
 Conc: 58.50 ng/ml

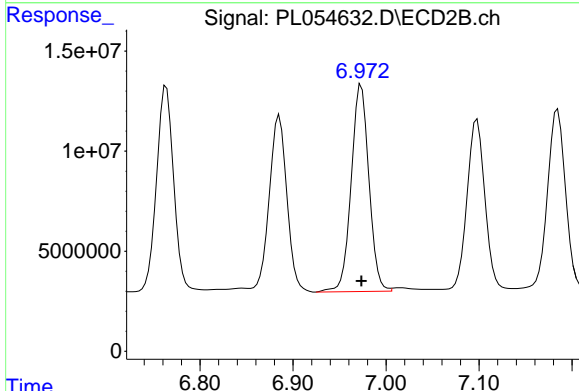


#15 Endosulfan II

R.T.: 6.388 min
 Delta R.T.: 0.000 min
 Response: 679780538
 Conc: 56.18 ng/ml

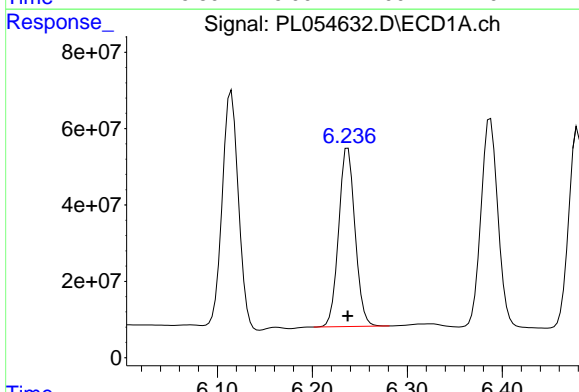
Instrument :
 ECD_L
 ClientSampled :
 IDLEWILD-BH-05MSD

Manual Integrations
 APPROVED
 Ankita
 11/27/2019 11:35:28 AM



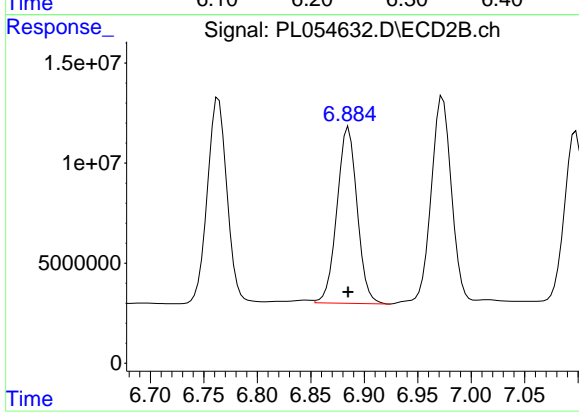
#15 Endosulfan II

R.T.: 6.973 min
 Delta R.T.: 0.000 min
 Response: 137323934
 Conc: 58.41 ng/ml



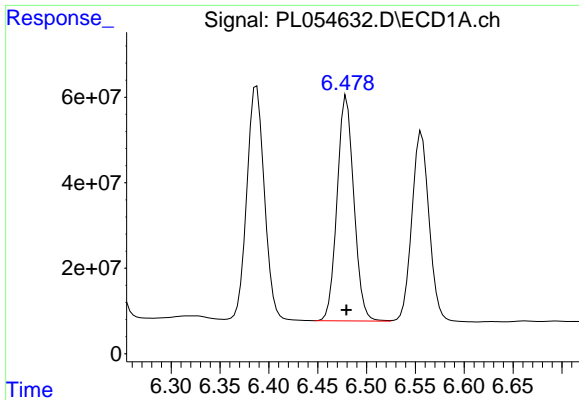
#16 4,4'-DDD

R.T.: 6.237 min
 Delta R.T.: 0.000 min
 Response: 560686361
 Conc: 57.40 ng/ml



#16 4,4'-DDD

R.T.: 6.885 min
 Delta R.T.: 0.000 min
 Response: 115687649
 Conc: 60.25 ng/ml

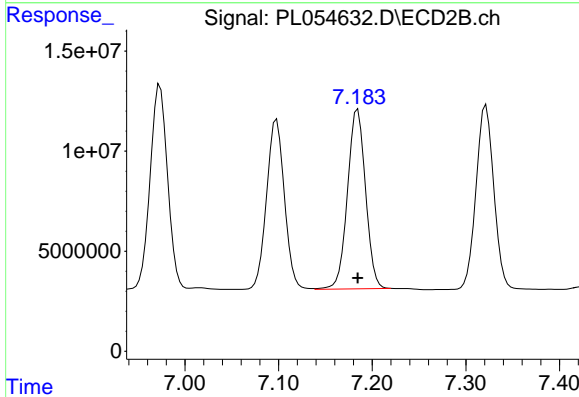


#17 4,4'-DDT

R.T.: 6.480 min
 Delta R.T.: 0.000 min
 Response: 629258221
 Conc: 60.07 ng/ml

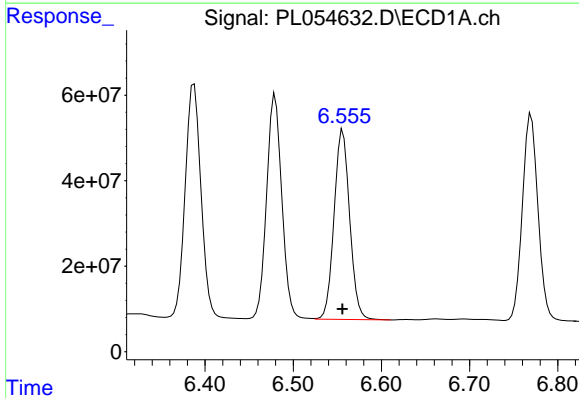
Instrument :
 ECD_L
ClientSampled :
 IDLEWILD-BH-05MSD

Manual Integrations
APPROVED
 Ankita
 11/27/2019 11:35:28 AM



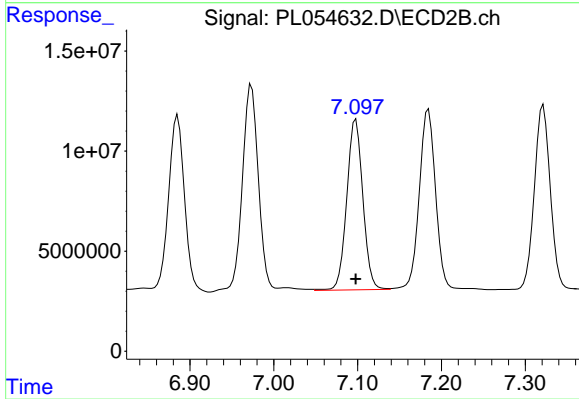
#17 4,4'-DDT

R.T.: 7.185 min
 Delta R.T.: 0.000 min
 Response: 120232563
 Conc: 60.68 ng/ml



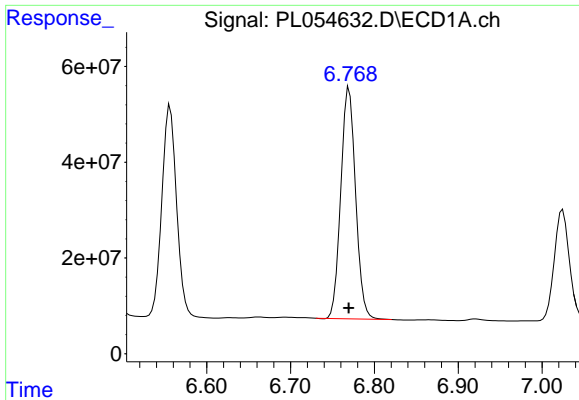
#18 Endrin aldehyde

R.T.: 6.556 min
 Delta R.T.: 0.000 min
 Response: 544678844
 Conc: 55.00 ng/ml



#18 Endrin aldehyde

R.T.: 7.098 min
 Delta R.T.: 0.000 min
 Response: 113983282
 Conc: 58.15 ng/ml



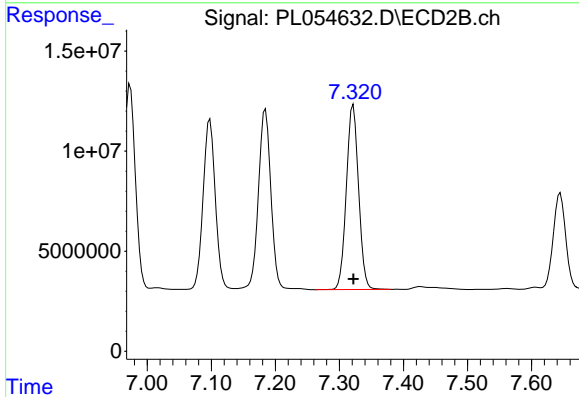
#19 Endosulfan Sulfate

R.T.: 6.770 min
Delta R.T.: 0.000 min
Response: 593512505
Conc: 55.42 ng/ml

Instrument :
ECD_L
ClientSampleId :
IDLEWILD-BH-05MSD

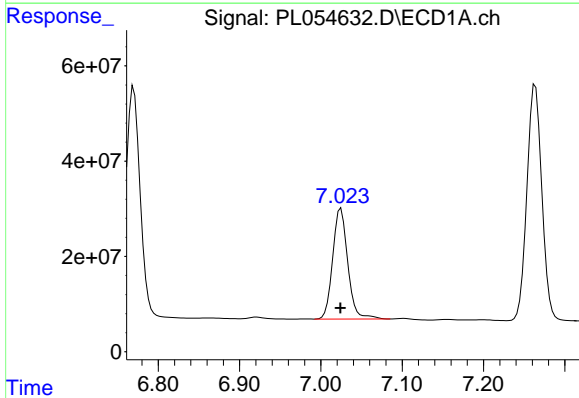
Manual Integrations
APPROVED

Ankita
11/27/2019 11:35:28 AM



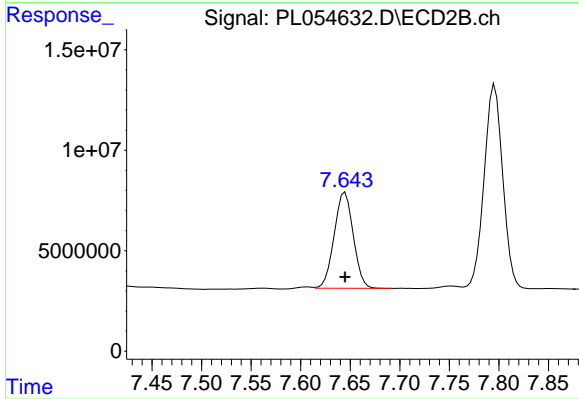
#19 Endosulfan Sulfate

R.T.: 7.322 min
Delta R.T.: 0.000 min
Response: 122121492
Conc: 57.59 ng/ml



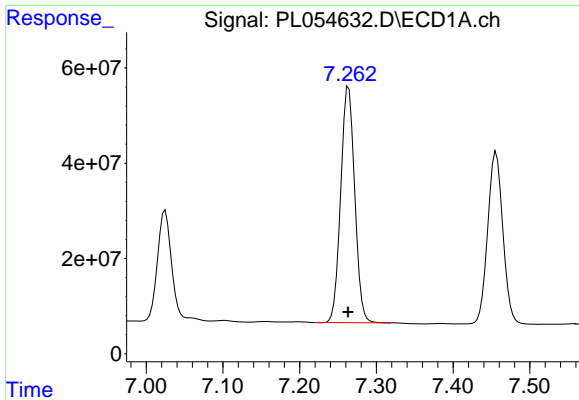
#20 Methoxychlor

R.T.: 7.025 min
Delta R.T.: 0.000 min
Response: 299835506
Conc: 59.83 ng/ml



#20 Methoxychlor

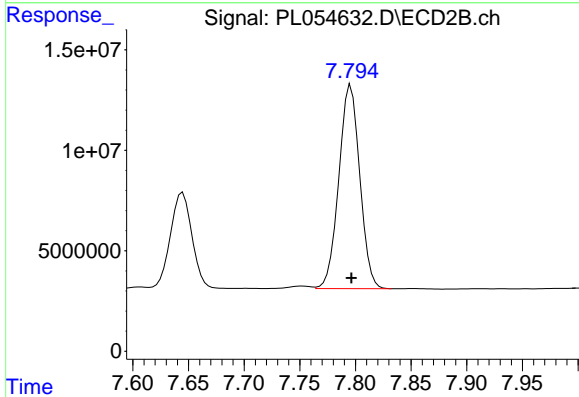
R.T.: 7.645 min
Delta R.T.: 0.000 min
Response: 64053680
Conc: 56.15 ng/ml



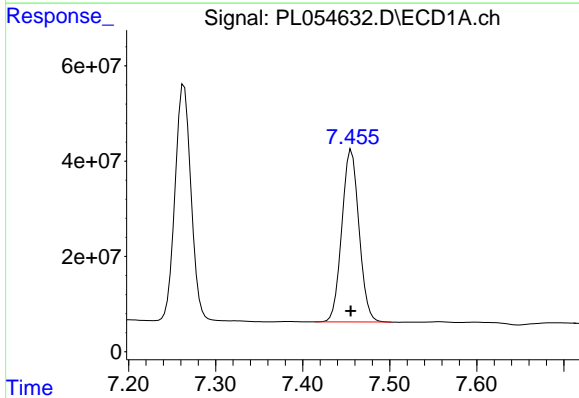
#21 Endrin ketone
 R.T.: 7.264 min
 Delta R.T.: 0.000 min
 Response: 629973935
 Conc: 57.96 ng/ml

Instrument :
 ECD_L
 ClientSampleId :
 IDLEWILD-BH-05MSD

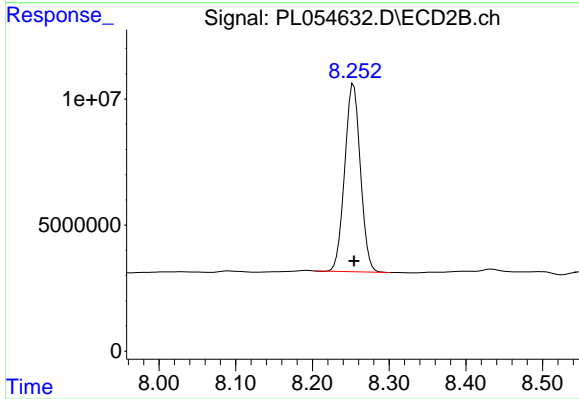
Manual Integrations
 APPROVED
 Ankita
 11/27/2019 11:35:28 AM



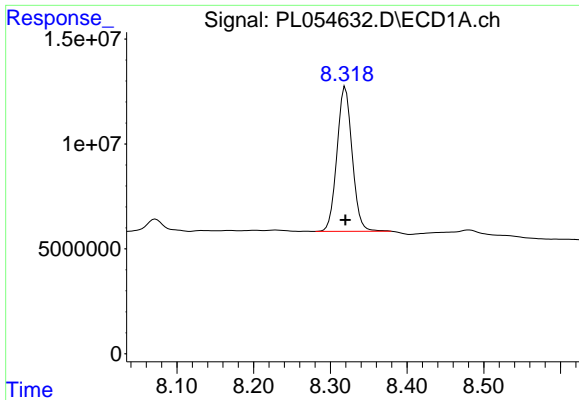
#21 Endrin ketone
 R.T.: 7.796 min
 Delta R.T.: 0.000 min
 Response: 132761494
 Conc: 58.98 ng/ml



#22 Mirex
 R.T.: 7.456 min
 Delta R.T.: 0.000 min
 Response: 495519107
 Conc: 61.04 ng/ml



#22 Mirex
 R.T.: 8.254 min
 Delta R.T.: 0.000 min
 Response: 106573812
 Conc: 61.66 ng/ml



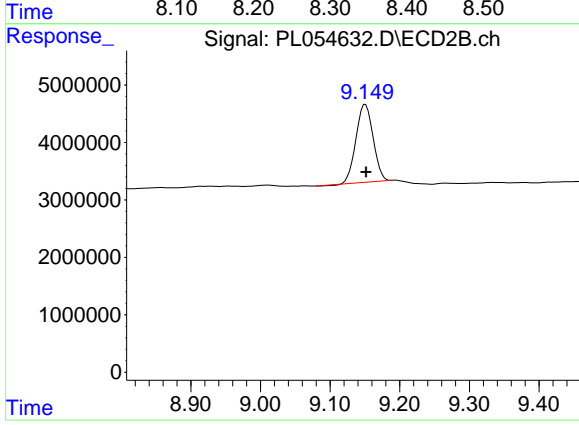
#28 Decachlorobiphenyl

R.T.: 8.320 min
Delta R.T.: 0.000 min
Response: 94863825
Conc: 9.91 ng/ml

Instrument :
ECD_L
ClientSampleId :
IDLEWILD-BH-05MSD

Manual Integrations
APPROVED

Ankita
11/27/2019 11:35:28 AM



#28 Decachlorobiphenyl

R.T.: 9.151 min
Delta R.T.: 0.000 min
Response: 23130342
Conc: 9.65 ng/ml