

Data Path : Z:\pestpcbsrv\HPCHEM1\ECD_L\Data\PL112619\
 Data File : PL054637.D
 Signal(s) : Signal #1: ECD1A.ch Signal #2: ECD2B.ch
 Acq On : 26 Nov 2019 17:07
 Operator : SG\AJ
 Sample : K6013-01
 Misc :
 ALS Vial : 14 Sample Multiplier: 1

Instrument :
 ECD_L
ClientSampled :
 600436752

Manual Integrations
APPROVED

Ankita
 11/27/2019 11:35:42 AM

Integration File signal 1: autoint1.e
 Integration File signal 2: autoint2.e
 Quant Time: Nov 27 02:44:50 2019
 Quant Method : Z:\pestpcbsrv\HPCHEM1\ECD_L\methods\PL112619.M
 Quant Title : GC Extractables
 QLast Update : Wed Nov 27 01:19:55 2019
 Response via : Initial Calibration
 Integrator: ChemStation

Volume Inj. : 1 µl
 Signal #1 Phase : ZB-MR2 Signal #2 Phase: ZB-MR1
 Signal #1 Info : 30M x 0.32mm x0.2 Signal #2 Info : 30M x 0.32mm x0.5µm

Compound	RT#1	RT#2	Resp#1	Resp#2	ng/ml	ng/ml

System Monitoring Compounds						
1) SA Tetrachlo...	3.538	4.051	148.3E6	34174185	12.749	13.392
28) SA Decachlor...	8.319	9.152	648.0E6	176.7E6	67.674	73.710
Target Compounds						
8) B Heptachlo...	5.268	5.918	20347427	2292518	1.345m	0.918m#

(f)=RT Delta > 1/2 Window (#)=Amounts differ by > 25% (m)=manual int.

Data Path : Z:\pestpcbsrv\HPCHEM1\ECD_L\Data\PL112619\
 Data File : PL054637.D
 Signal(s) : Signal #1: ECD1A.ch Signal #2: ECD2B.ch
 Acq On : 26 Nov 2019 17:07
 Operator : SG\AJ
 Sample : K6013-01
 Misc :
 ALS Vial : 14 Sample Multiplier: 1

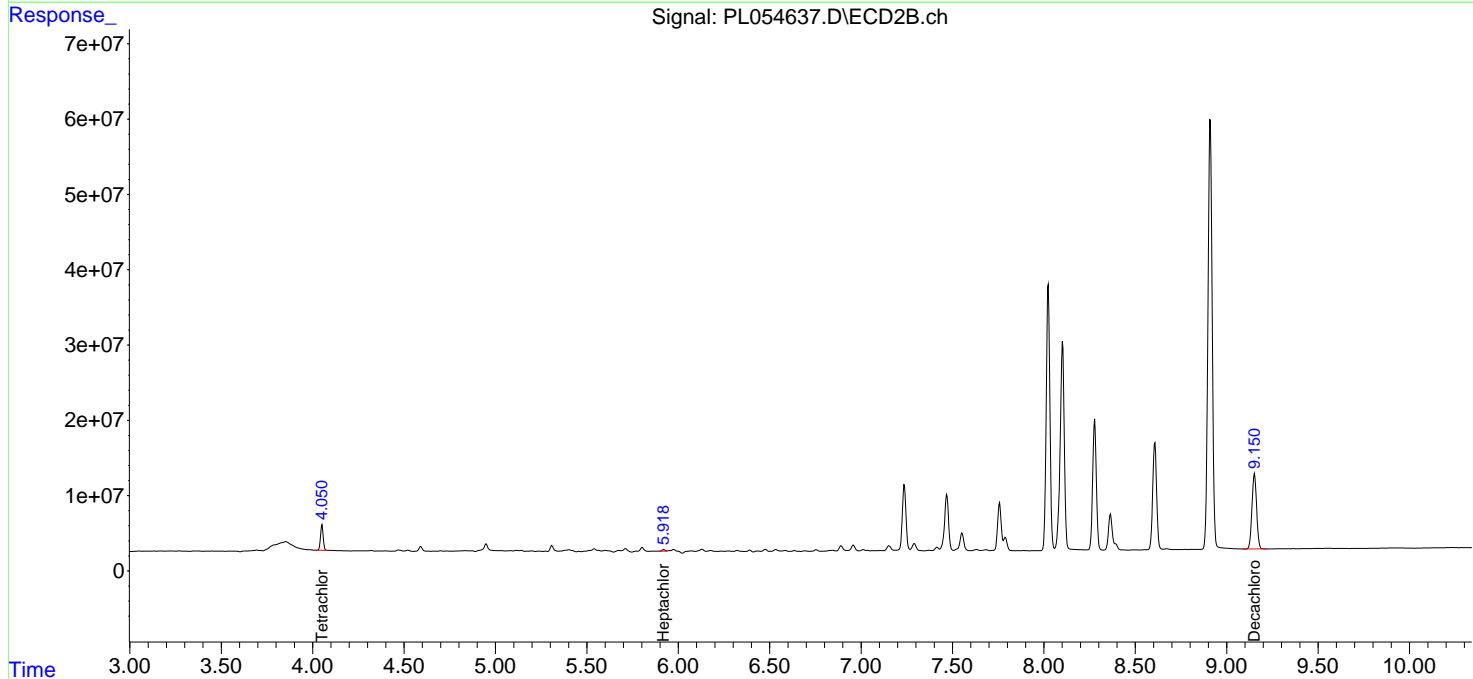
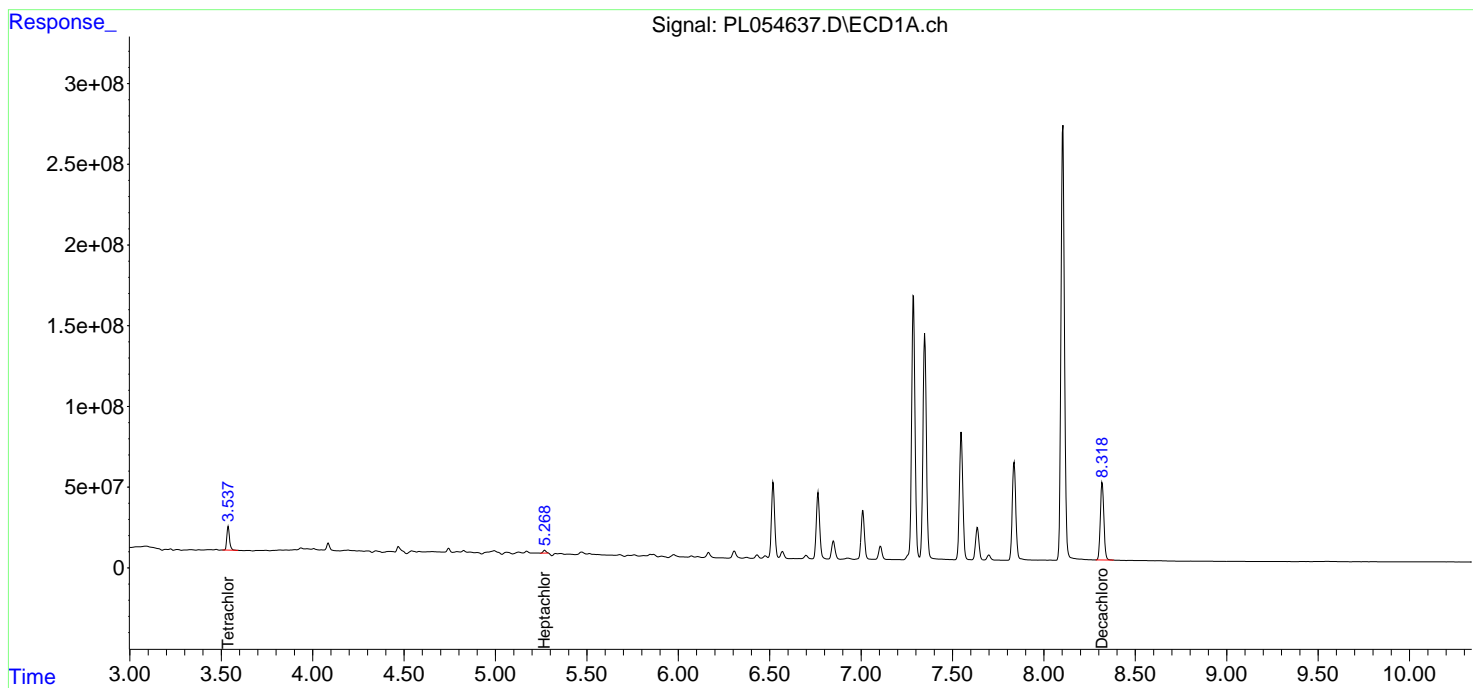
Instrument :
 ECD_L
 ClientSampleId :
 600436752

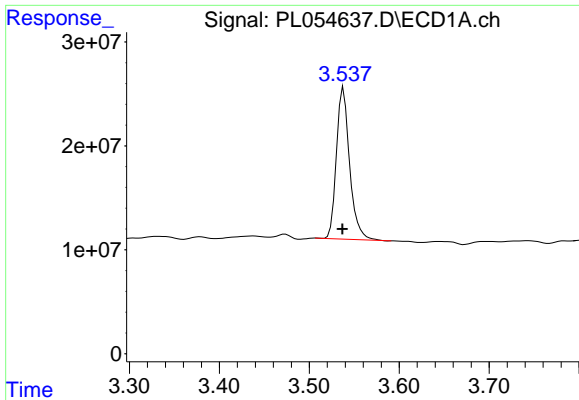
Manual Integrations
 APPROVED

Ankita
 11/27/2019 11:35:42 AM

Integration File signal 1: autoint1.e
 Integration File signal 2: autoint2.e
 Quant Time: Nov 27 02:44:50 2019
 Quant Method : Z:\pestpcbsrv\HPCHEM1\ECD_L\methods\PL112619.M
 Quant Title : GC Extractables
 QLast Update : Wed Nov 27 01:19:55 2019
 Response via : Initial Calibration
 Integrator: ChemStation

Volume Inj. : 1 µl
 Signal #1 Phase : ZB-MR2 Signal #2 Phase: ZB-MR1
 Signal #1 Info : 30M x 0.32mm x0.2 Signal #2 Info : 30M x 0.32mm x0.5µm

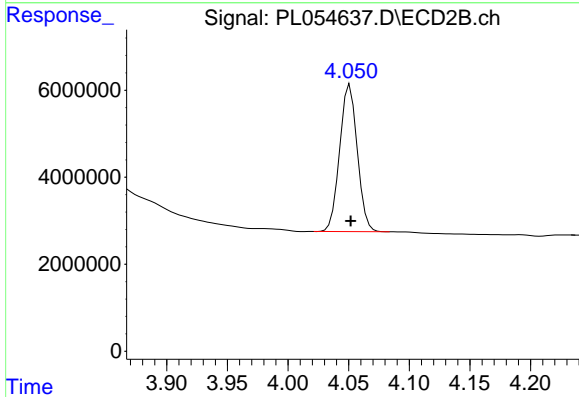




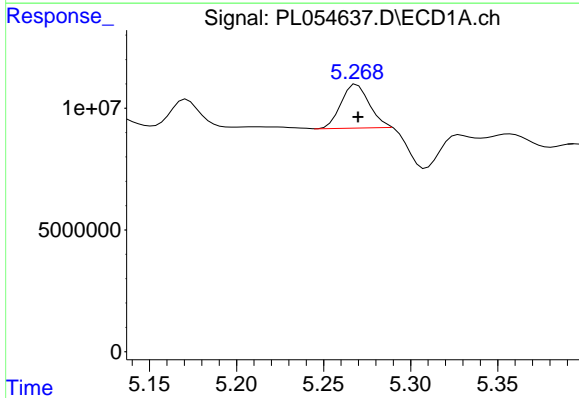
#1 Tetrachloro-m-xylene
 R.T.: 3.538 min
 Delta R.T.: 0.001 min
 Response: 148323575
 Conc: 12.75 ng/ml

Instrument :
 ECD_L
 ClientSampleId :
 600436752

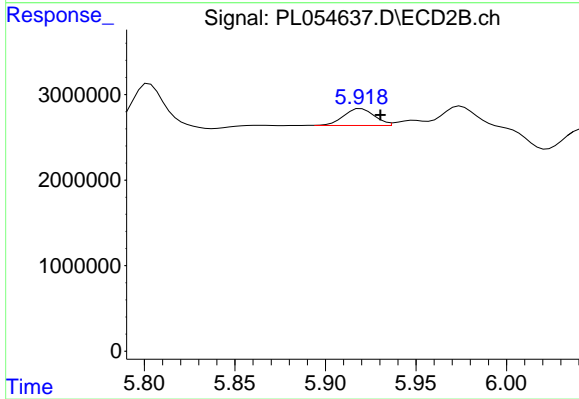
Manual Integrations
 APPROVED
 Ankita
 11/27/2019 11:35:42 AM



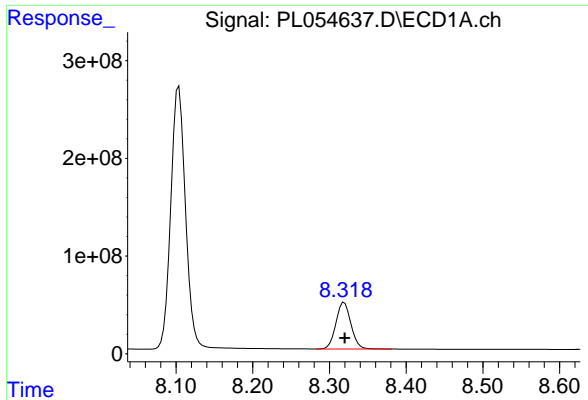
#1 Tetrachloro-m-xylene
 R.T.: 4.051 min
 Delta R.T.: 0.000 min
 Response: 34174185
 Conc: 13.39 ng/ml



#8 Heptachlor epoxide
 R.T.: 5.268 min
 Delta R.T.: -0.002 min
 Response: 20347427
 Conc: 1.35 ng/ml m



#8 Heptachlor epoxide
 R.T.: 5.918 min
 Delta R.T.: -0.012 min
 Response: 2292518
 Conc: 0.92 ng/ml m



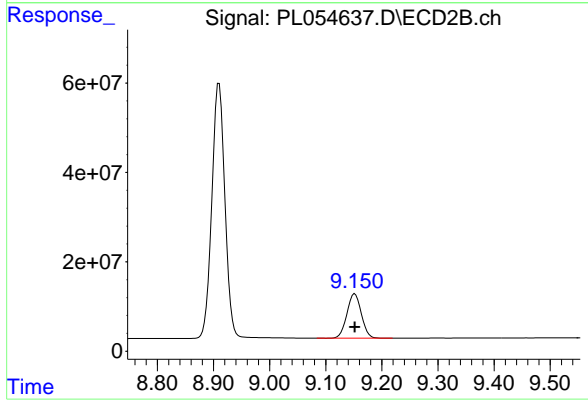
#28 Decachlorobiphenyl

R.T.: 8.319 min
Delta R.T.: 0.000 min
Response: 648049938
Conc: 67.67 ng/ml

Instrument :
ECD_L
ClientSampled :
600436752

Manual Integrations
APPROVED

Ankita
11/27/2019 11:35:42 AM



#28 Decachlorobiphenyl

R.T.: 9.152 min
Delta R.T.: 0.000 min
Response: 176715834
Conc: 73.71 ng/ml