

Data Path : Z:\pestpcbsrv\HPCHEM1\ECD_L\Data\PL112619\
 Data File : PL054642.D
 Signal(s) : Signal #1: ECD1A.ch Signal #2: ECD2B.ch
 Acq On : 26 Nov 2019 18:17
 Operator : SG\AJ
 Sample : K6021-06
 Misc :
 ALS Vial : 19 Sample Multiplier: 1

Instrument :
 ECD_L
 ClientSampleId :
 SOIL-004-E

Integration File signal 1: autoint1.e
 Integration File signal 2: autoint2.e
 Quant Time: Nov 27 02:45:55 2019
 Quant Method : Z:\pestpcbsrv\HPCHEM1\ECD_L\methods\PL112619.M
 Quant Title : GC Extractables
 QLast Update : Wed Nov 27 01:19:55 2019
 Response via : Initial Calibration
 Integrator: ChemStation

Volume Inj. : 1 µl
 Signal #1 Phase : ZB-MR2 Signal #2 Phase: ZB-MR1
 Signal #1 Info : 30M x 0.32mm x0.2 Signal #2 Info : 30M x 0.32mm x0.5µm

Compound	RT#1	RT#2	Resp#1	Resp#2	ng/ml	ng/ml

System Monitoring Compounds						
1) SA Tetrachlo...	3.538	4.052	148.3E6	33640330	12.749	13.183
28) SA Decachlor...	8.319	9.151	105.9E6	29026732	11.062	12.107

Target Compounds

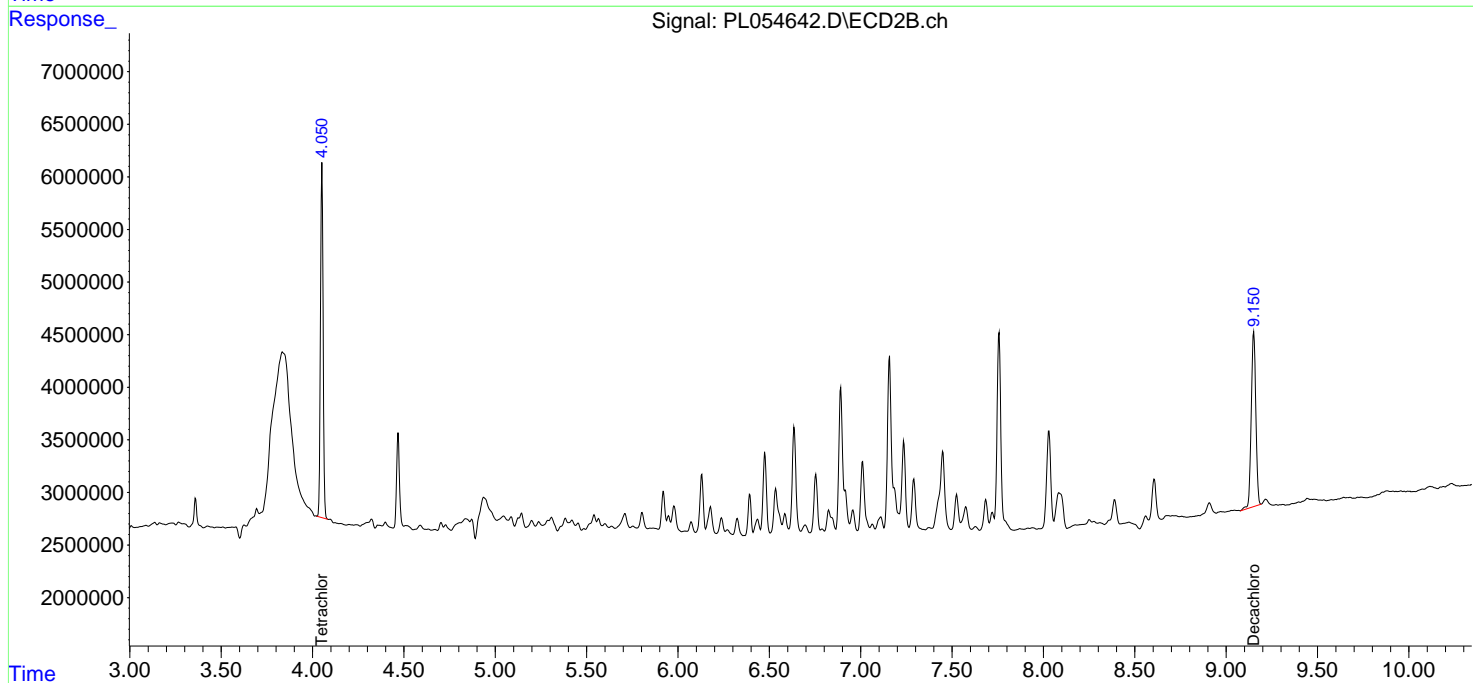
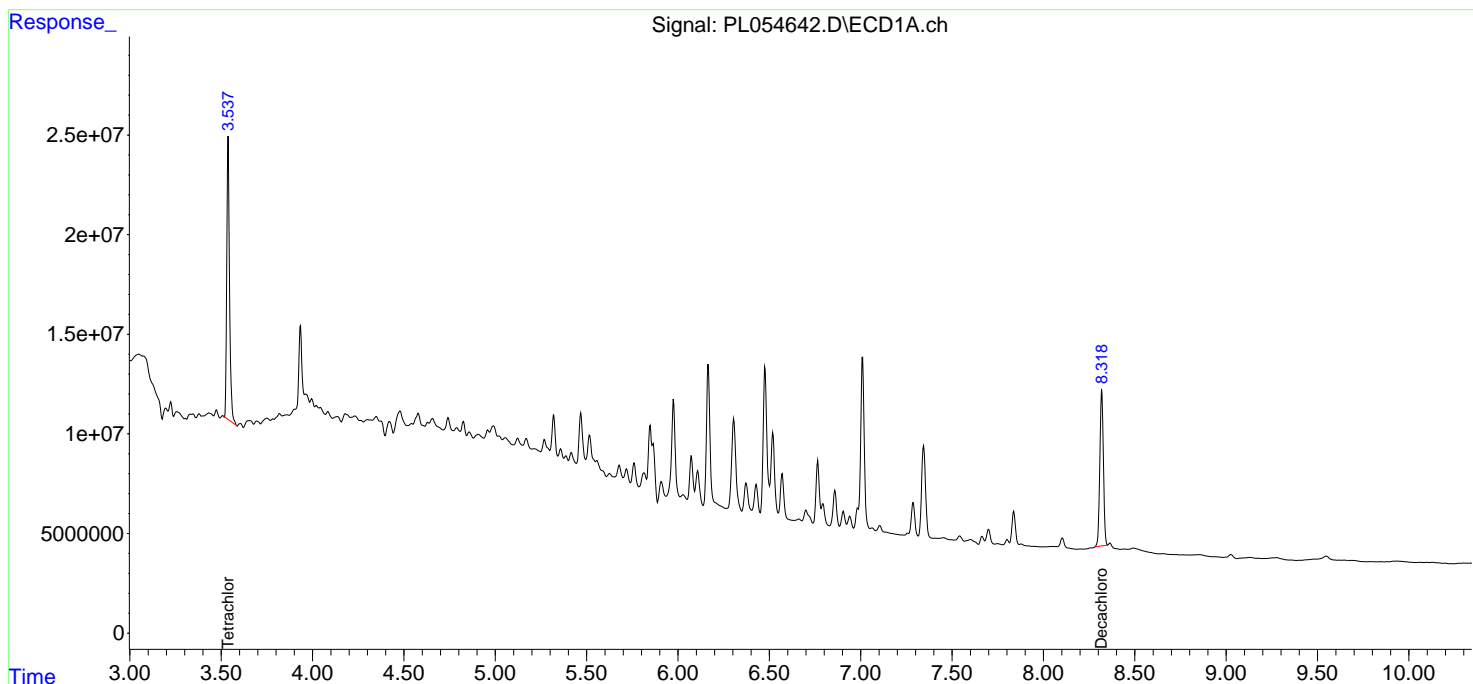
(f)=RT Delta > 1/2 Window (#)=Amounts differ by > 25% (m)=manual int.

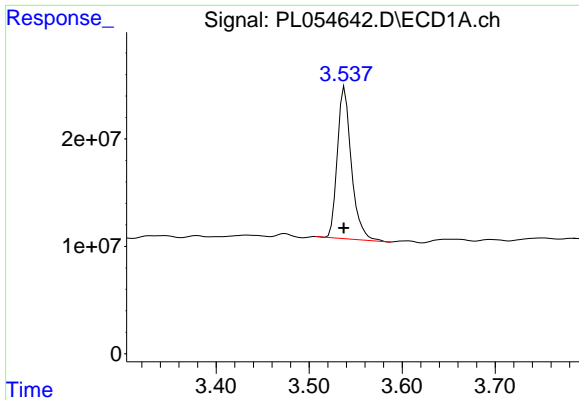
Data Path : Z:\pestpcbsrv\HPCHEM1\ECD_L\Data\PL112619\
 Data File : PL054642.D
 Signal(s) : Signal #1: ECD1A.ch Signal #2: ECD2B.ch
 Acq On : 26 Nov 2019 18:17
 Operator : SG\AJ
 Sample : K6021-06
 Misc :
 ALS Vial : 19 Sample Multiplier: 1

Instrument :
 ECD_L
 ClientSampled :
 SOIL-004-E

Integration File signal 1: autoint1.e
 Integration File signal 2: autoint2.e
 Quant Time: Nov 27 02:45:55 2019
 Quant Method : Z:\pestpcbsrv\HPCHEM1\ECD_L\methods\PL112619.M
 Quant Title : GC Extractables
 QLast Update : Wed Nov 27 01:19:55 2019
 Response via : Initial Calibration
 Integrator: ChemStation

Volume Inj. : 1 µl
 Signal #1 Phase : ZB-MR2 Signal #2 Phase: ZB-MR1
 Signal #1 Info : 30M x 0.32mm x0.2 Signal #2 Info : 30M x 0.32mm x0.5µm

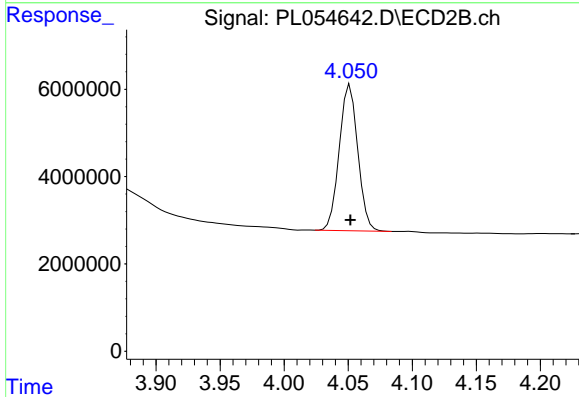




#1 Tetrachloro-m-xylene

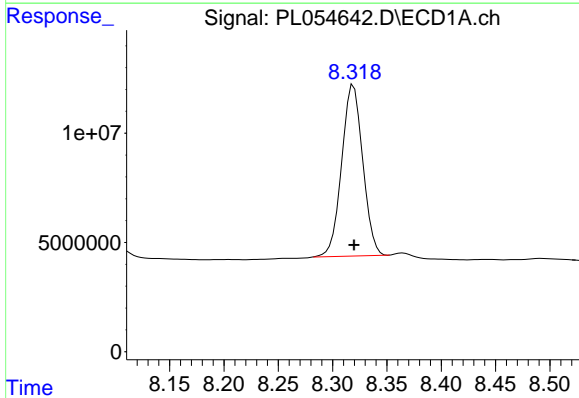
R.T.: 3.538 min
 Delta R.T.: 0.001 min
 Response: 148329601
 Conc: 12.75 ng/ml

Instrument :
 ECD_L
 ClientSampleId :
 SOIL-004-E



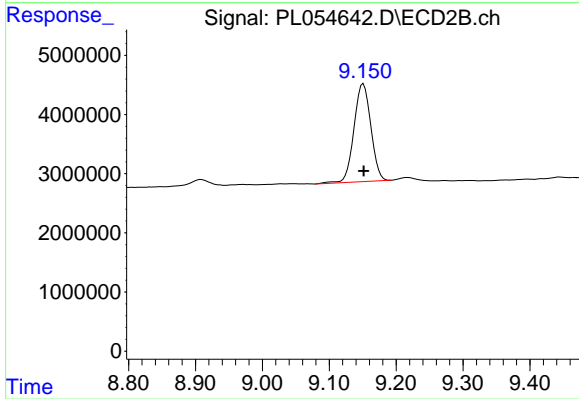
#1 Tetrachloro-m-xylene

R.T.: 4.052 min
 Delta R.T.: 0.000 min
 Response: 33640330
 Conc: 13.18 ng/ml



#28 Decachlorobiphenyl

R.T.: 8.319 min
 Delta R.T.: 0.000 min
 Response: 105933322
 Conc: 11.06 ng/ml



#28 Decachlorobiphenyl

R.T.: 9.151 min
 Delta R.T.: 0.000 min
 Response: 29026732
 Conc: 12.11 ng/ml