

Data Path : Z:\pestpcbsrv\HPCHEM1\ECD_L\Data\PL112619\
 Data File : PL054646.D
 Signal(s) : Signal #1: ECD1A.ch Signal #2: ECD2B.ch
 Acq On : 26 Nov 2019 19:14
 Operator : SG\AJ
 Sample : K6022-15
 Misc :
 ALS Vial : 23 Sample Multiplier: 1

Instrument :
 ECD_L
ClientSampleId :
 TP-17-S

Manual Integrations
APPROVED
 Ankita
 11/27/2019 11:42:46 AM

Integration File signal 1: autoint1.e
 Integration File signal 2: autoint2.e
 Quant Time: Nov 27 02:46:39 2019
 Quant Method : Z:\pestpcbsrv\HPCHEM1\ECD_L\methods\PL112619.M
 Quant Title : GC Extractables
 QLast Update : Wed Nov 27 01:19:55 2019
 Response via : Initial Calibration
 Integrator: ChemStation

Volume Inj. : 1 µl
 Signal #1 Phase : ZB-MR2 Signal #2 Phase: ZB-MR1
 Signal #1 Info : 30M x 0.32mm x0.2 Signal #2 Info : 30M x 0.32mm x0.5µm

Compound	RT#1	RT#2	Resp#1	Resp#2	ng/ml	ng/ml

System Monitoring Compounds						
1) SA Tetrachlo...	3.538	4.052	153.9E6	36751550	13.228	14.402
28) SA Decachlor...	8.319	9.151	134.0E6	35089582	13.993	14.636
Target Compounds						
4) MA Heptachlor	4.573	5.238	12207527	2542655	0.692	0.843m
10) B gamma-Chl...	5.498	6.166	8596368	4116784	0.567m	1.563 #
11) B alpha-Chl...	5.557	6.240	24972612	10180778	1.694	3.877 #
17) MA 4,4'-DDT	6.477	7.184	11207831	990893	1.070	0.500m#

(f)=RT Delta > 1/2 Window (#)=Amounts differ by > 25% (m)=manual int.

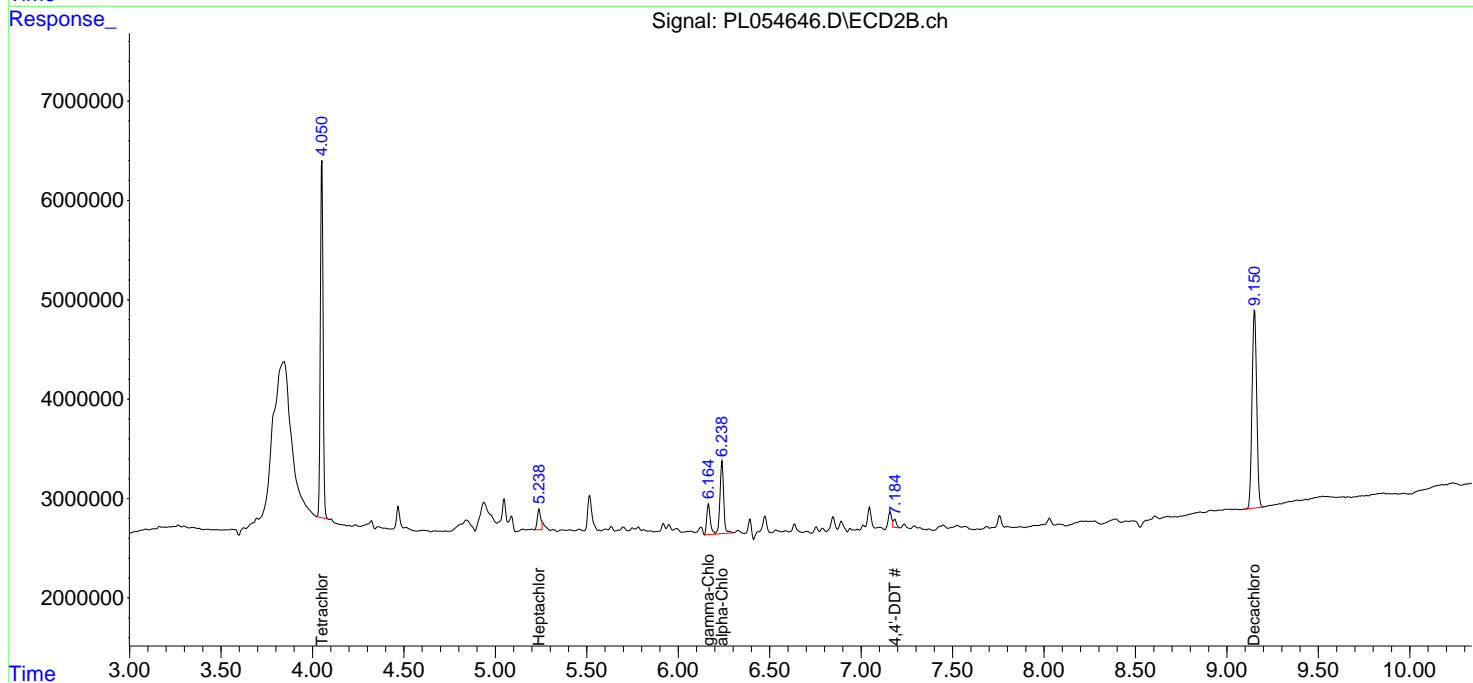
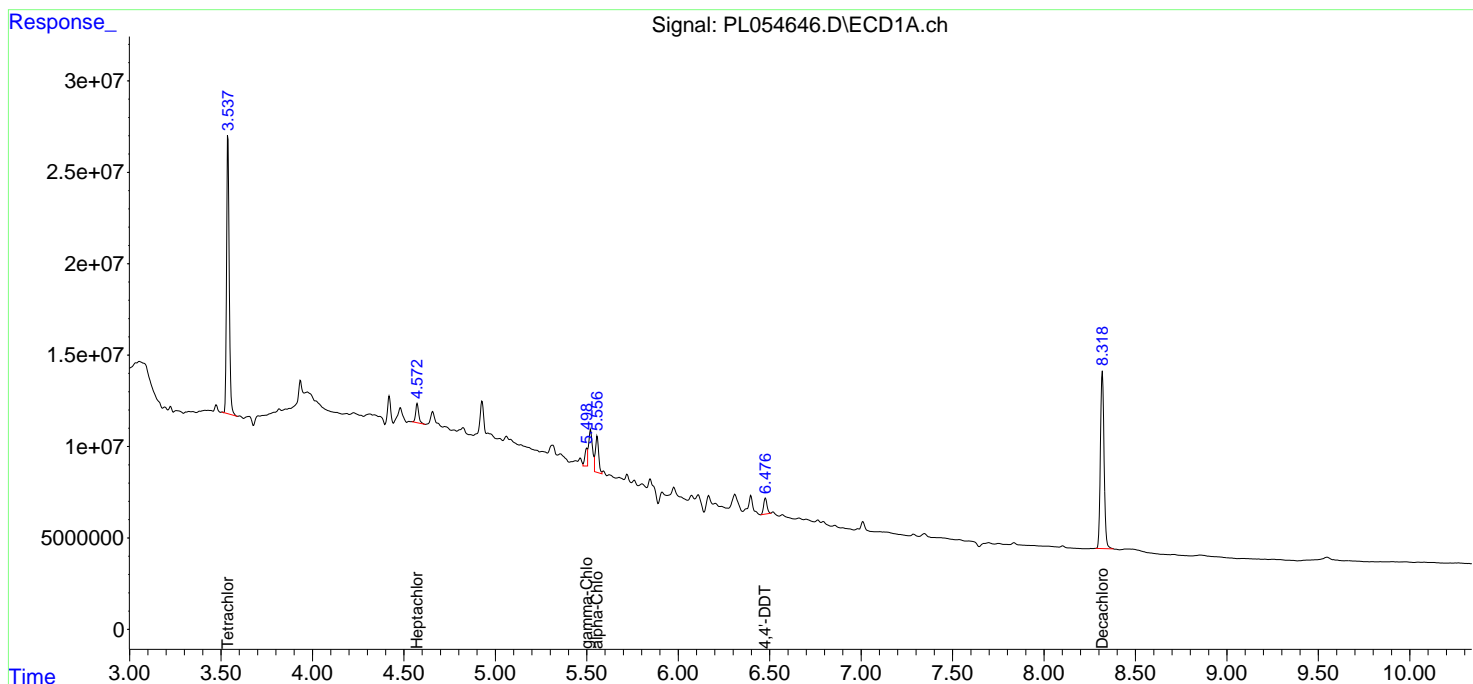
Data Path : Z:\pestpcbsrv\HPCHEM1\ECD_L\Data\PL112619\
 Data File : PL054646.D
 Signal(s) : Signal #1: ECD1A.ch Signal #2: ECD2B.ch
 Acq On : 26 Nov 2019 19:14
 Operator : SG\AJ
 Sample : K6022-15
 Misc :
 ALS Vial : 23 Sample Multiplier: 1

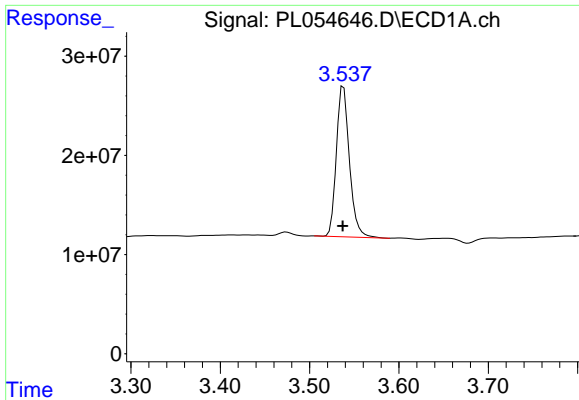
Instrument :
 ECD_L
 ClientSampled :
 TP-17-S

Manual Integrations
APPROVED
 Ankita
 11/27/2019 11:42:46 AM

Integration File signal 1: autoint1.e
 Integration File signal 2: autoint2.e
 Quant Time: Nov 27 02:46:39 2019
 Quant Method : Z:\pestpcbsrv\HPCHEM1\ECD_L\methods\PL112619.M
 Quant Title : GC Extractables
 QLast Update : Wed Nov 27 01:19:55 2019
 Response via : Initial Calibration
 Integrator: ChemStation

Volume Inj. : 1 µl
 Signal #1 Phase : ZB-MR2 Signal #2 Phase: ZB-MR1
 Signal #1 Info : 30M x 0.32mm x0.2 Signal #2 Info : 30M x 0.32mm x0.5µm

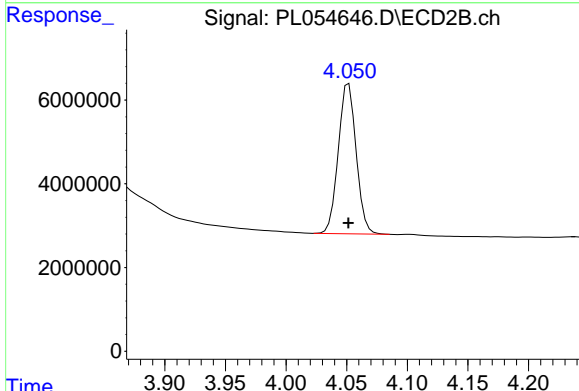




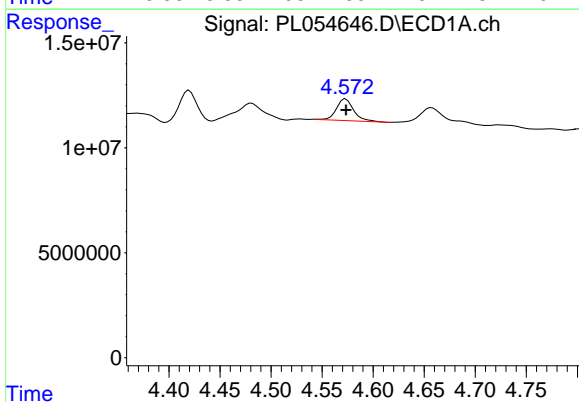
#1 Tetrachloro-m-xylene
 R.T.: 3.538 min
 Delta R.T.: 0.001 min
 Response: 153897945
 Conc: 13.23 ng/ml

Instrument :
 ECD_L
 ClientSampled :
 TP-17-S

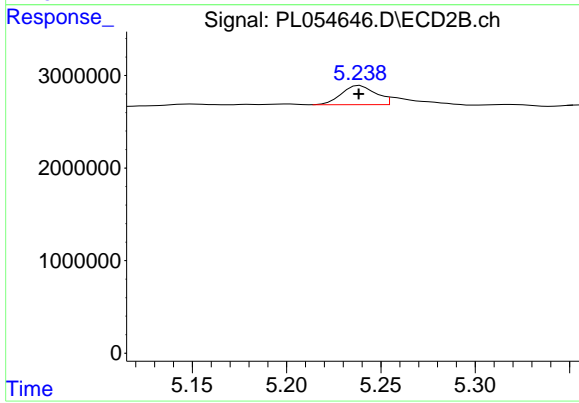
Manual Integrations
 APPROVED
 Ankita
 11/27/2019 11:42:46 AM



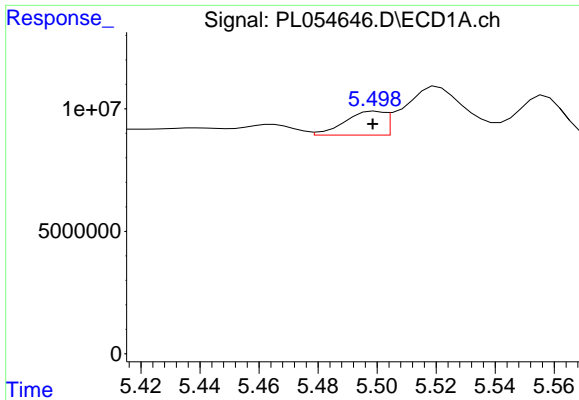
#1 Tetrachloro-m-xylene
 R.T.: 4.052 min
 Delta R.T.: 0.000 min
 Response: 36751550
 Conc: 14.40 ng/ml



#4 Heptachlor
 R.T.: 4.573 min
 Delta R.T.: 0.000 min
 Response: 12207527
 Conc: 0.69 ng/ml



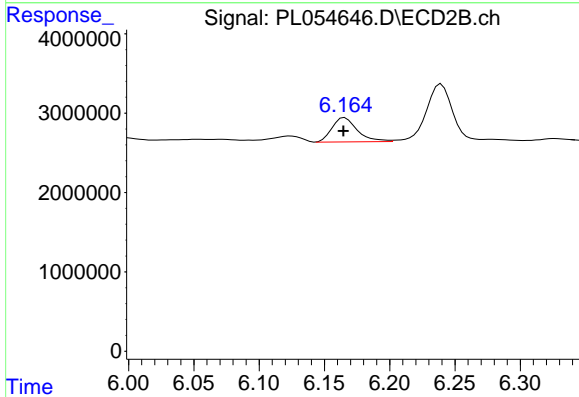
#4 Heptachlor
 R.T.: 5.238 min
 Delta R.T.: 0.000 min
 Response: 2542655
 Conc: 0.84 ng/ml m



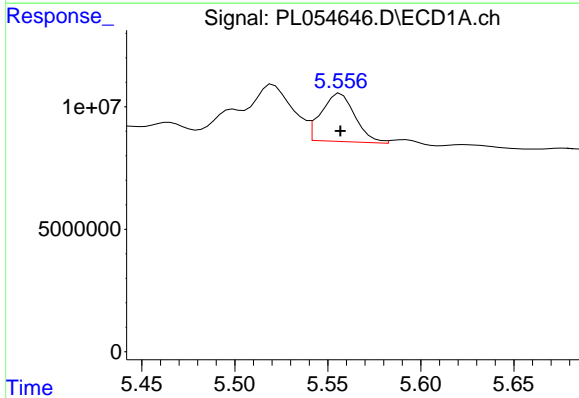
#10 gamma-Chlordane
 R.T.: 5.498 min
 Delta R.T.: 0.000 min
 Response: 8596368
 Conc: 0.57 ng/ml m

Instrument :
 ECD_L
 ClientSampled :
 TP-17-S

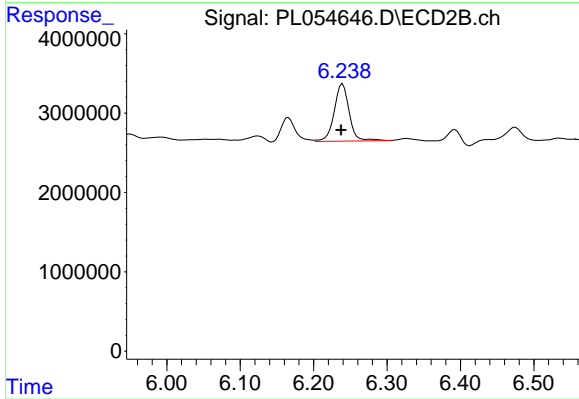
Manual Integrations
 APPROVED
 Ankita
 11/27/2019 11:42:46 AM



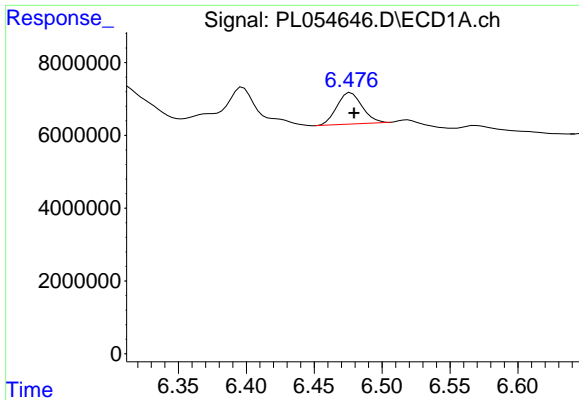
#10 gamma-Chlordane
 R.T.: 6.166 min
 Delta R.T.: 0.001 min
 Response: 4116784
 Conc: 1.56 ng/ml



#11 alpha-Chlordane
 R.T.: 5.557 min
 Delta R.T.: 0.000 min
 Response: 24972612
 Conc: 1.69 ng/ml



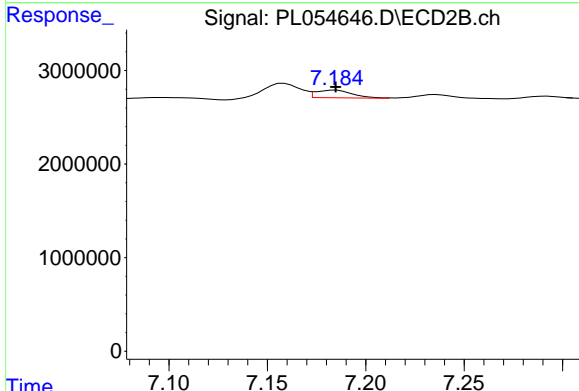
#11 alpha-Chlordane
 R.T.: 6.240 min
 Delta R.T.: 0.002 min
 Response: 10180778
 Conc: 3.88 ng/ml



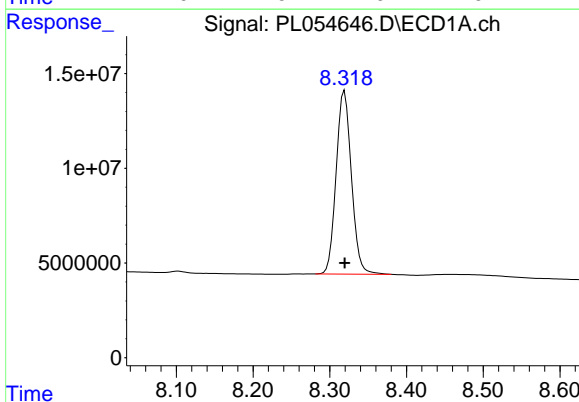
#17 4,4'-DDT
 R.T.: 6.477 min
 Delta R.T.: -0.002 min
 Response: 11207831
 Conc: 1.07 ng/ml

Instrument :
 ECD_L
 ClientSampled :
 TP-17-S

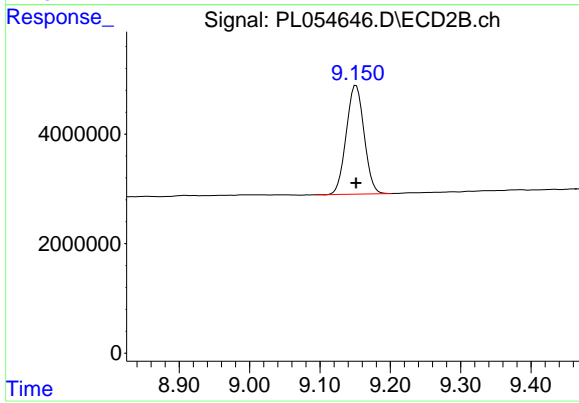
Manual Integrations
 APPROVED
 Ankita
 11/27/2019 11:42:46 AM



#17 4,4'-DDT
 R.T.: 7.184 min
 Delta R.T.: 0.000 min
 Response: 990893
 Conc: 0.50 ng/ml m



#28 Decachlorobiphenyl
 R.T.: 8.319 min
 Delta R.T.: 0.000 min
 Response: 133994620
 Conc: 13.99 ng/ml



#28 Decachlorobiphenyl
 R.T.: 9.151 min
 Delta R.T.: 0.000 min
 Response: 35089582
 Conc: 14.64 ng/ml