

Data Path : Z:\pestpcbsrv\HPCHEM1\ECD\_L\Data\PL112619\  
 Data File : PL054653.D  
 Signal(s) : Signal #1: ECD1A.ch Signal #2: ECD2B.ch  
 Acq On : 26 Nov 2019 21:06  
 Operator : SG\AJ  
 Sample : K6024-04  
 Misc :  
 ALS Vial : 27 Sample Multiplier: 1

Instrument :  
 ECD\_L  
 ClientSampleId :  
 B-4-(0.5-1.0)

Integration File signal 1: autoint1.e  
 Integration File signal 2: autoint2.e  
 Quant Time: Nov 27 02:48:08 2019  
 Quant Method : Z:\pestpcbsrv\HPCHEM1\ECD\_L\methods\PL112619.M  
 Quant Title : GC Extractables  
 QLast Update : Wed Nov 27 01:19:55 2019  
 Response via : Initial Calibration  
 Integrator: ChemStation

Volume Inj. : 1 µl  
 Signal #1 Phase : ZB-MR2 Signal #2 Phase: ZB-MR1  
 Signal #1 Info : 30M x 0.32mm x0.2 Signal #2 Info : 30M x 0.32mm x0.5µm

| Compound                    | RT#1  | RT#2  | Resp#1  | Resp#2   | ng/ml  | ng/ml  |
|-----------------------------|-------|-------|---------|----------|--------|--------|
| -----                       |       |       |         |          |        |        |
| System Monitoring Compounds |       |       |         |          |        |        |
| 1) SA Tetrachlo...          | 3.538 | 4.052 | 184.9E6 | 44765098 | 15.890 | 17.542 |
| 28) SA Decachlor...         | 8.319 | 9.150 | 100.6E6 | 27218701 | 10.510 | 11.353 |

Target Compounds

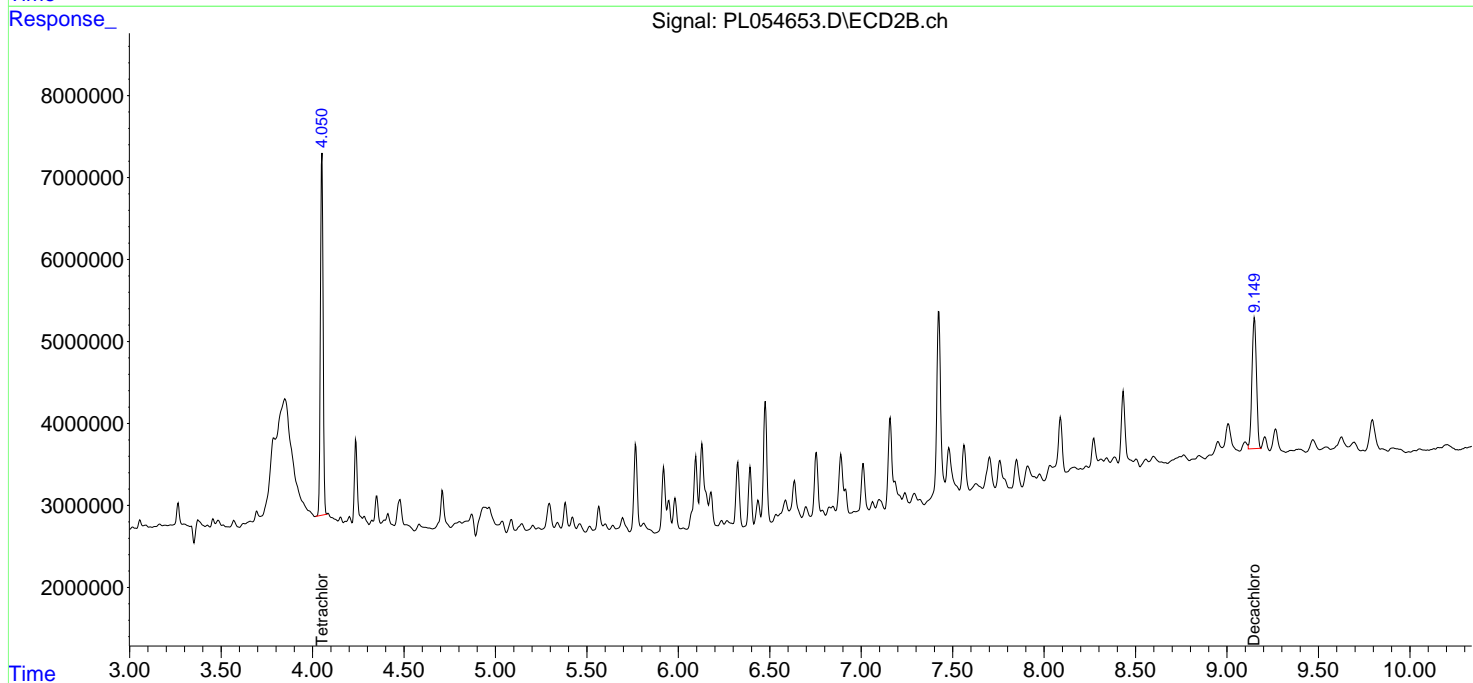
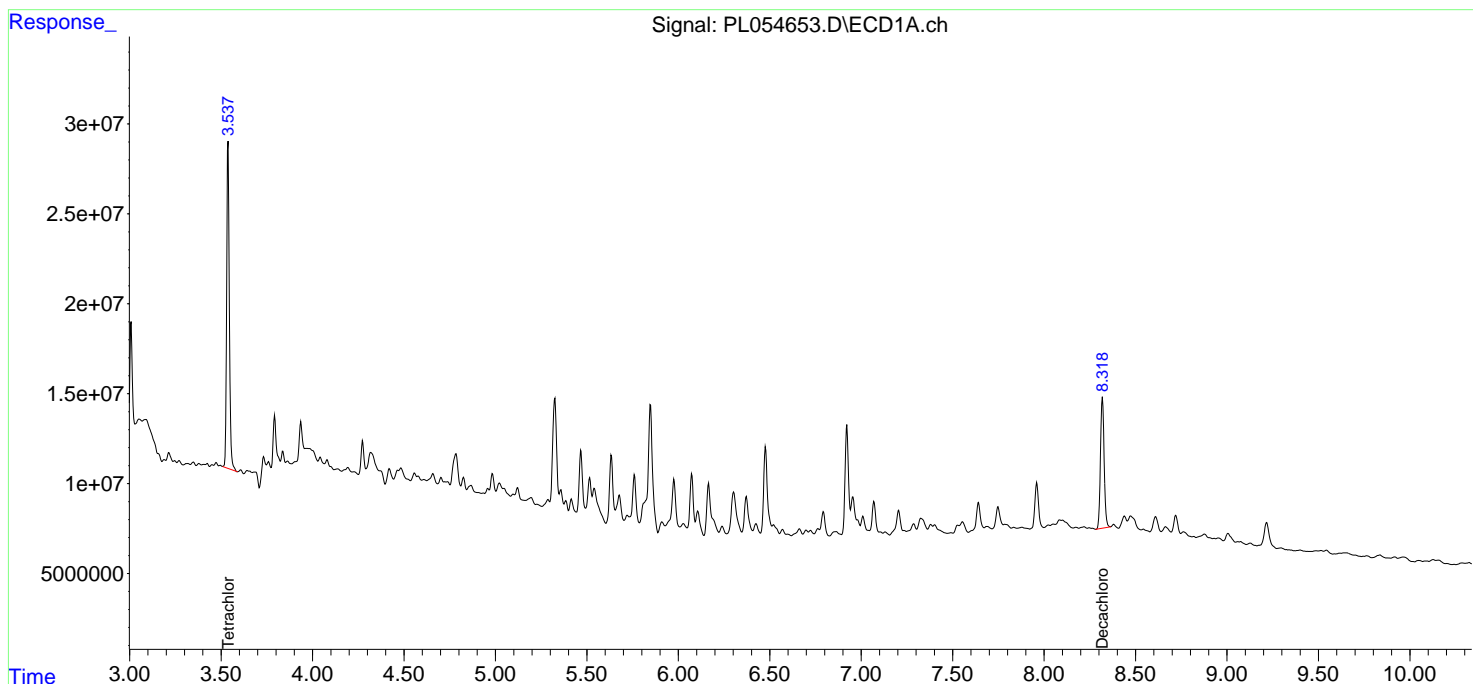
(f)=RT Delta > 1/2 Window (#)=Amounts differ by > 25% (m)=manual int.

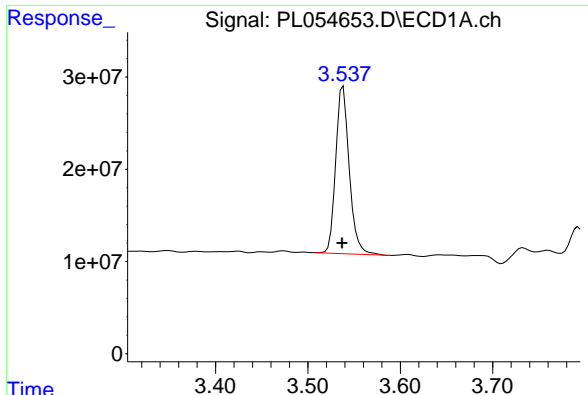
Data Path : Z:\pestpcbsrv\HPCHEM1\ECD\_L\Data\PL112619\  
 Data File : PL054653.D  
 Signal(s) : Signal #1: ECD1A.ch Signal #2: ECD2B.ch  
 Acq On : 26 Nov 2019 21:06  
 Operator : SG\AJ  
 Sample : K6024-04  
 Misc :  
 ALS Vial : 27 Sample Multiplier: 1

Instrument :  
 ECD\_L  
 ClientSampleId :  
 B-4-(0.5-1.0)

Integration File signal 1: autoint1.e  
 Integration File signal 2: autoint2.e  
 Quant Time: Nov 27 02:48:08 2019  
 Quant Method : Z:\pestpcbsrv\HPCHEM1\ECD\_L\methods\PL112619.M  
 Quant Title : GC Extractables  
 QLast Update : Wed Nov 27 01:19:55 2019  
 Response via : Initial Calibration  
 Integrator: ChemStation

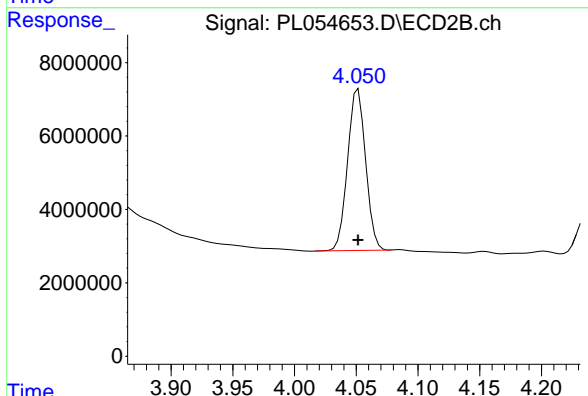
Volume Inj. : 1 µl  
 Signal #1 Phase : ZB-MR2 Signal #2 Phase: ZB-MR1  
 Signal #1 Info : 30M x 0.32mm x0.2 Signal #2 Info : 30M x 0.32mm x0.5µm



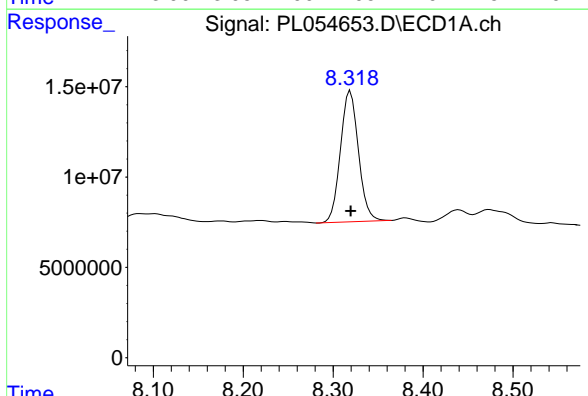


#1 Tetrachloro-m-xylene  
 R.T.: 3.538 min  
 Delta R.T.: 0.001 min  
 Response: 184871164  
 Conc: 15.89 ng/ml

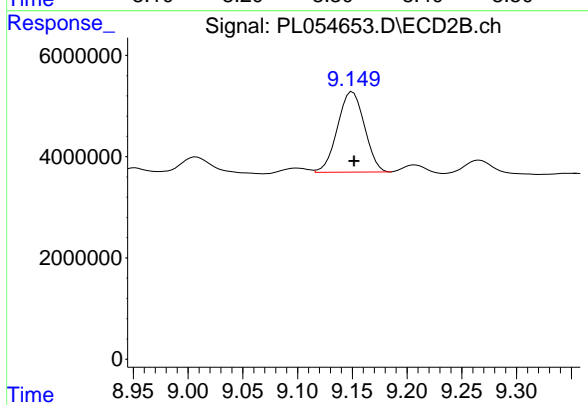
Instrument :  
 ECD\_L  
 ClientSampleId :  
 B-4-(0.5-1.0)



#1 Tetrachloro-m-xylene  
 R.T.: 4.052 min  
 Delta R.T.: 0.000 min  
 Response: 44765098  
 Conc: 17.54 ng/ml



#28 Decachlorobiphenyl  
 R.T.: 8.319 min  
 Delta R.T.: 0.000 min  
 Response: 100641379  
 Conc: 10.51 ng/ml



#28 Decachlorobiphenyl  
 R.T.: 9.150 min  
 Delta R.T.: -0.001 min  
 Response: 27218701  
 Conc: 11.35 ng/ml