

Data Path : Z:\pestpcbsrv\HPCHEM1\ECD_L\Data\PL112619\
 Data File : PL054657.D
 Signal(s) : Signal #1: ECD1A.ch Signal #2: ECD2B.ch
 Acq On : 26 Nov 2019 22:03
 Operator : SG\AJ
 Sample : PB125123BS
 Misc :
 ALS Vial : 31 Sample Multiplier: 1

Instrument :
 ECD_L
 ClientSampleId :
 PB125123BS

Integration File signal 1: autoint1.e
 Integration File signal 2: autoint2.e
 Quant Time: Nov 27 02:49:00 2019
 Quant Method : Z:\pestpcbsrv\HPCHEM1\ECD_L\methods\PL112619.M
 Quant Title : GC Extractables
 QLast Update : Wed Nov 27 01:19:55 2019
 Response via : Initial Calibration
 Integrator: ChemStation

Volume Inj. : 1 µl
 Signal #1 Phase : ZB-MR2 Signal #2 Phase: ZB-MR1
 Signal #1 Info : 30M x 0.32mm x0.2 Signal #2 Info : 30M x 0.32mm x0.5µm

Compound	RT#1	RT#2	Resp#1	Resp#2	ng/ml	ng/ml

System Monitoring Compounds						
1) SA Tetrachlo...	3.538	4.052	203.6E6	48487938	17.500	19.001
28) SA Decachlor...	8.320	9.151	167.7E6	46868798	17.513	19.550
Target Compounds						
2) A alpha-BHC	3.981	4.444	969.0E6	192.2E6	51.043	54.251
3) MA gamma-BHC...	4.268	4.729	888.7E6	176.6E6	52.133	54.158
4) MA Heptachlor	4.574	5.239	914.7E6	165.2E6	51.873	54.723
5) MB Aldrin	4.825	5.545	851.7E6	151.9E6	52.252	54.501
6) B beta-BHC	4.518	4.899	374.9E6	75576437	50.541	53.668
7) B delta-BHC	4.726	5.118	816.1E6	154.1E6	50.203	57.789
8) B Heptachlo...	5.271	5.931	794.0E6	141.1E6	52.493	56.499
9) A Endosulfan I	5.612	6.289	706.5E6	131.9E6	51.808	53.319
10) B gamma-Chl...	5.499	6.166	786.8E6	140.4E6	51.884	53.312
11) B alpha-Chl...	5.557	6.238	758.7E6	140.2E6	51.453	53.389
12) B 4,4'-DDE	5.720	6.394	698.7E6	133.6E6	52.514	53.991
13) MA Dieldrin	5.856	6.546	733.6E6	136.8E6	51.730	53.761
14) MA Endrin	6.115	6.765	646.5E6	116.9E6	50.769	52.774
15) B Endosulfa...	6.388	6.974	598.9E6	122.3E6	49.494	52.021
16) A 4,4'-DDD	6.237	6.885	511.5E6	103.1E6	52.372	53.674
17) MA 4,4'-DDT	6.480	7.185	535.1E6	108.8E6	51.078	54.911
18) B Endrin al...	6.556	7.098	482.7E6	104.4E6	48.743	53.257
19) B Endosulfa...	6.769	7.322	522.6E6	113.1E6	48.803	53.347
20) A Methoxychlor	7.025	7.645	252.0E6	60495942	50.291	53.035
21) B Endrin ke...	7.264	7.796	567.1E6	124.0E6	52.179	55.109
22) Mirex	7.456	8.254	435.2E6	99345844	53.608	57.481

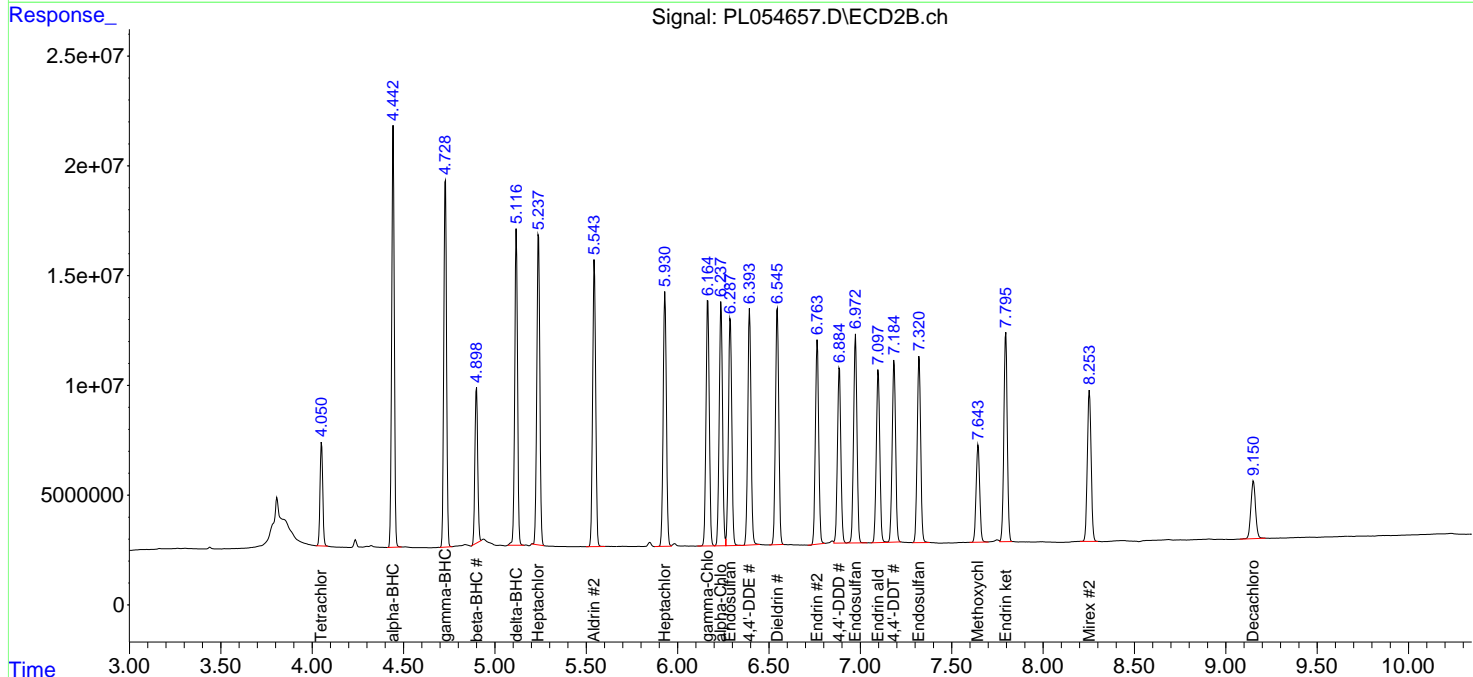
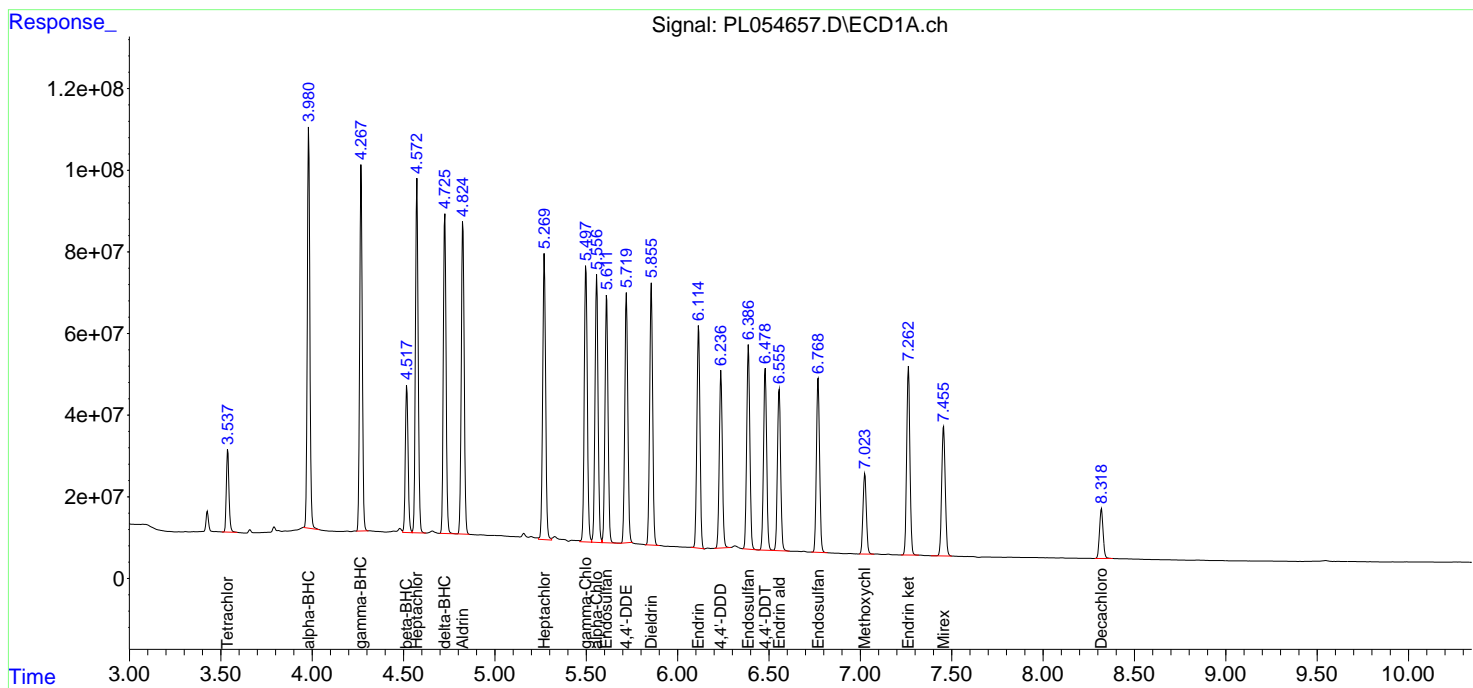
(f)=RT Delta > 1/2 Window (#)=Amounts differ by > 25% (m)=manual int.

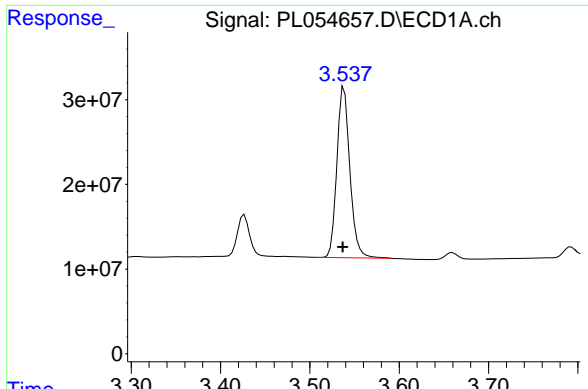
Data Path : Z:\pestpcbsrv\HPCHEM1\ECD_L\Data\PL112619\
 Data File : PL054657.D
 Signal(s) : Signal #1: ECD1A.ch Signal #2: ECD2B.ch
 Acq On : 26 Nov 2019 22:03
 Operator : SG\AJ
 Sample : PB125123BS
 Misc :
 ALS Vial : 31 Sample Multiplier: 1

Instrument :
 ECD_L
 ClientSampled :
 PB125123BS

Integration File signal 1: autoint1.e
 Integration File signal 2: autoint2.e
 Quant Time: Nov 27 02:49:00 2019
 Quant Method : Z:\pestpcbsrv\HPCHEM1\ECD_L\methods\PL112619.M
 Quant Title : GC Extractables
 QLast Update : Wed Nov 27 01:19:55 2019
 Response via : Initial Calibration
 Integrator: ChemStation

Volume Inj. : 1 µl
 Signal #1 Phase : ZB-MR2 Signal #2 Phase: ZB-MR1
 Signal #1 Info : 30M x 0.32mm x0.2 Signal #2 Info : 30M x 0.32mm x0.5µm

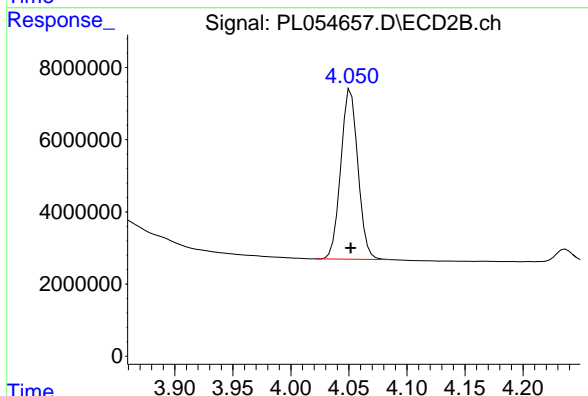




#1 Tetrachloro-m-xylene

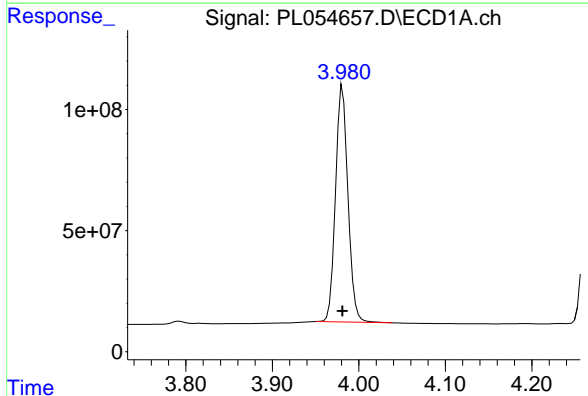
R.T.: 3.538 min
 Delta R.T.: 0.001 min
 Response: 203597740
 Conc: 17.50 ng/ml

Instrument :
 ECD_L
 ClientSampleId :
 PB125123BS



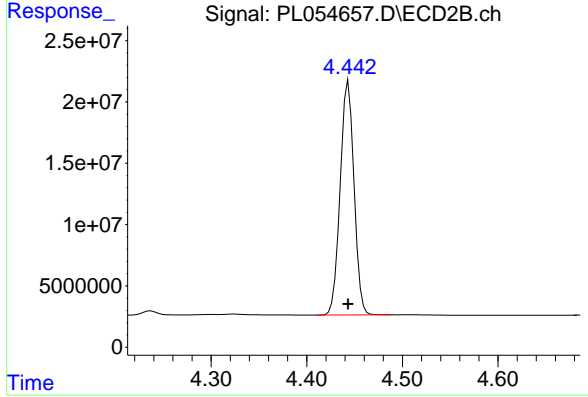
#1 Tetrachloro-m-xylene

R.T.: 4.052 min
 Delta R.T.: 0.000 min
 Response: 48487938
 Conc: 19.00 ng/ml



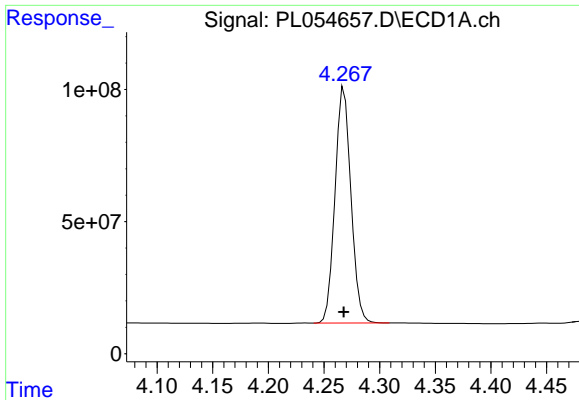
#2 alpha-BHC

R.T.: 3.981 min
 Delta R.T.: 0.000 min
 Response: 969009471
 Conc: 51.04 ng/ml



#2 alpha-BHC

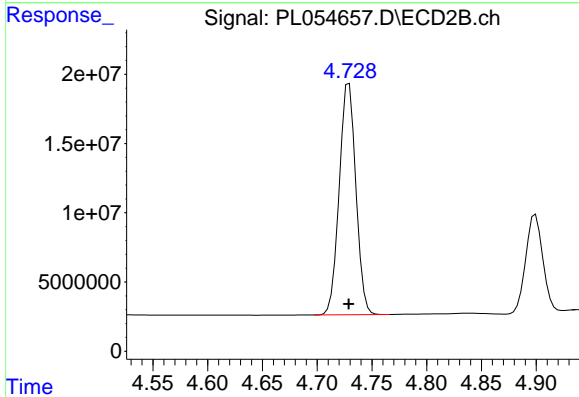
R.T.: 4.444 min
 Delta R.T.: 0.000 min
 Response: 192199020
 Conc: 54.25 ng/ml



#3 gamma-BHC (Lindane)

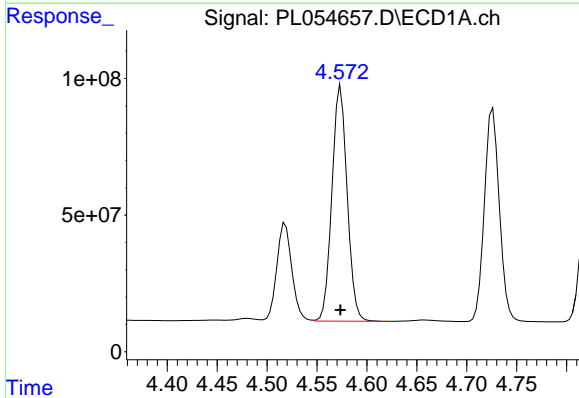
R.T.: 4.268 min
 Delta R.T.: 0.000 min
 Response: 888652517
 Conc: 52.13 ng/ml

Instrument :
 ECD_L
 ClientSampleId :
 PB125123BS



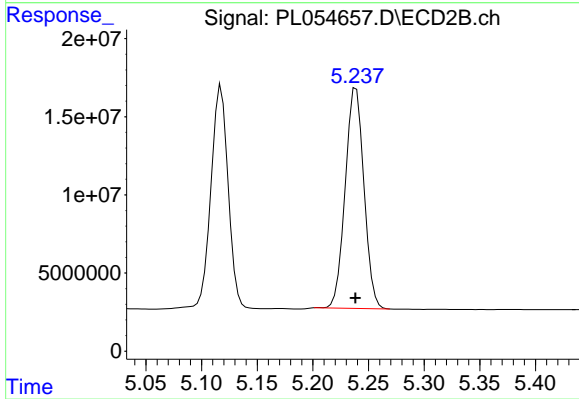
#3 gamma-BHC (Lindane)

R.T.: 4.729 min
 Delta R.T.: 0.000 min
 Response: 176583251
 Conc: 54.16 ng/ml



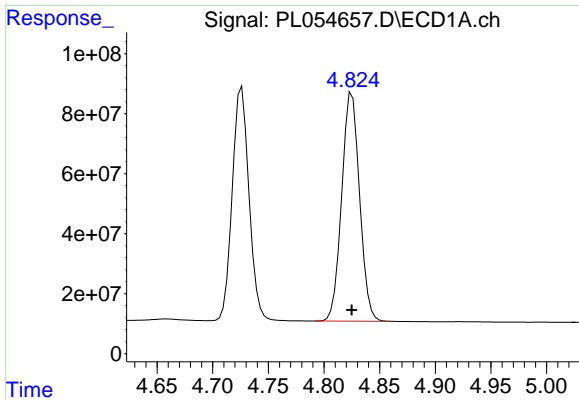
#4 Heptachlor

R.T.: 4.574 min
 Delta R.T.: 0.000 min
 Response: 914702520
 Conc: 51.87 ng/ml



#4 Heptachlor

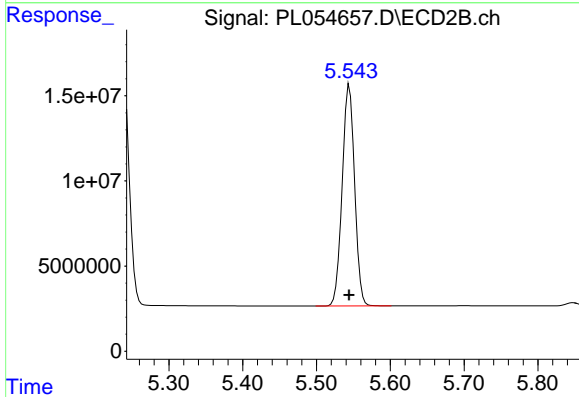
R.T.: 5.239 min
 Delta R.T.: 0.000 min
 Response: 165154327
 Conc: 54.72 ng/ml



#5 Aldrin

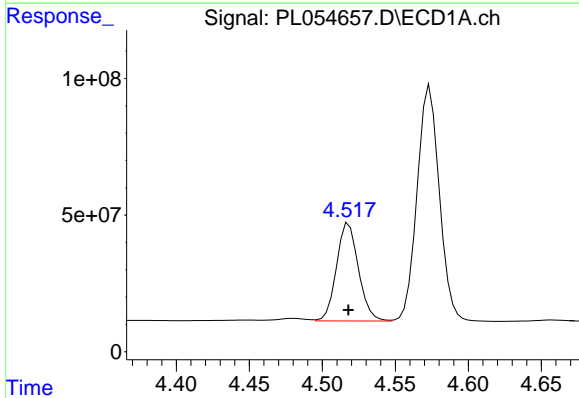
R.T.: 4.825 min
 Delta R.T.: 0.000 min
 Response: 851711010
 Conc: 52.25 ng/ml

Instrument :
 ECD_L
 ClientSampleId :
 PB125123BS



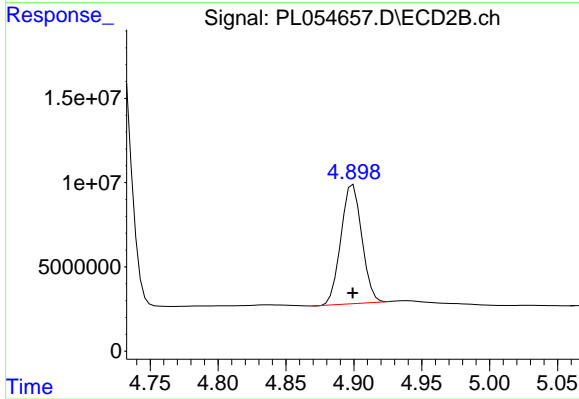
#5 Aldrin

R.T.: 5.545 min
 Delta R.T.: 0.000 min
 Response: 151865079
 Conc: 54.50 ng/ml



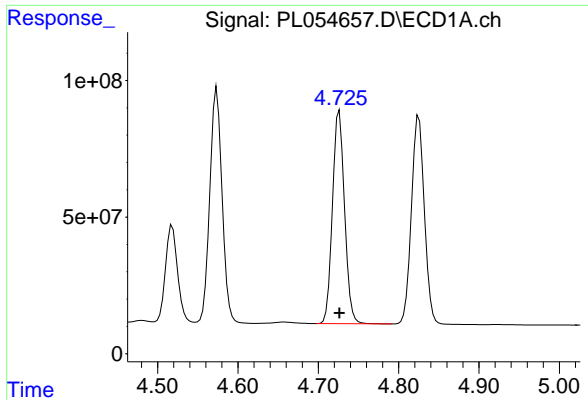
#6 beta-BHC

R.T.: 4.518 min
 Delta R.T.: 0.000 min
 Response: 374853533
 Conc: 50.54 ng/ml



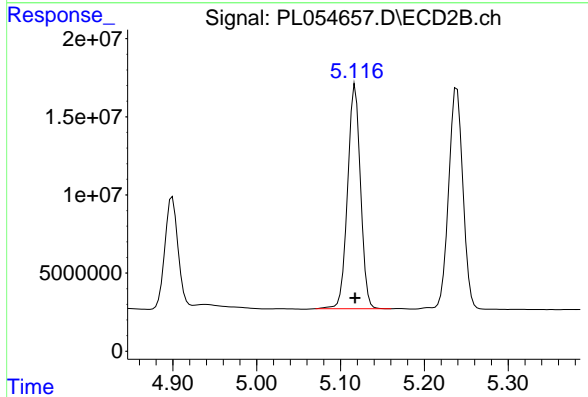
#6 beta-BHC

R.T.: 4.899 min
 Delta R.T.: 0.000 min
 Response: 75576437
 Conc: 53.67 ng/ml

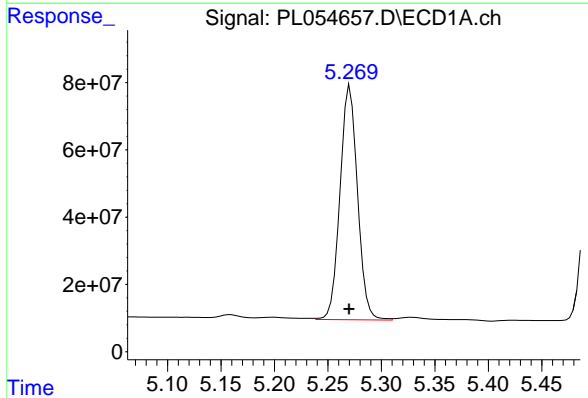


#7 delta-BHC
 R.T.: 4.726 min
 Delta R.T.: 0.000 min
 Response: 816063470
 Conc: 50.20 ng/ml

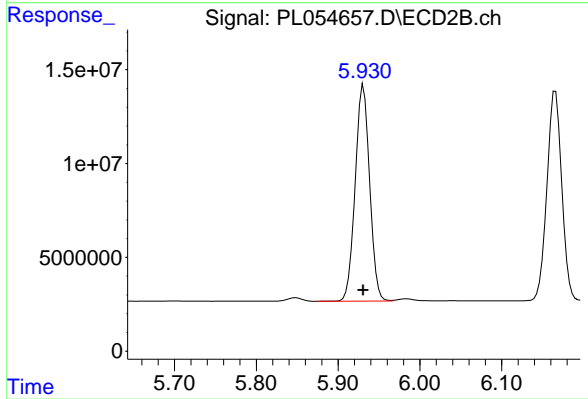
Instrument :
 ECD_L
 ClientSampleId :
 PB125123BS



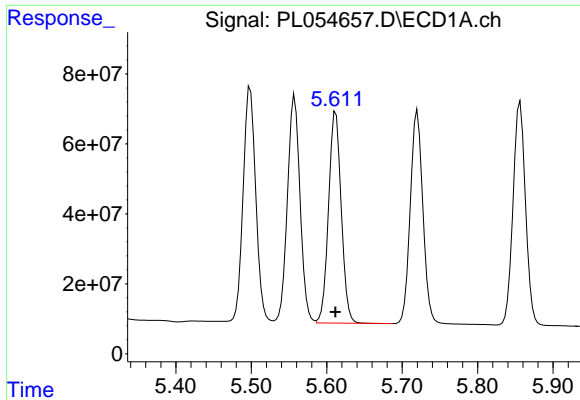
#7 delta-BHC
 R.T.: 5.118 min
 Delta R.T.: 0.000 min
 Response: 154076641
 Conc: 57.79 ng/ml



#8 Heptachlor epoxide
 R.T.: 5.271 min
 Delta R.T.: 0.000 min
 Response: 794013178
 Conc: 52.49 ng/ml

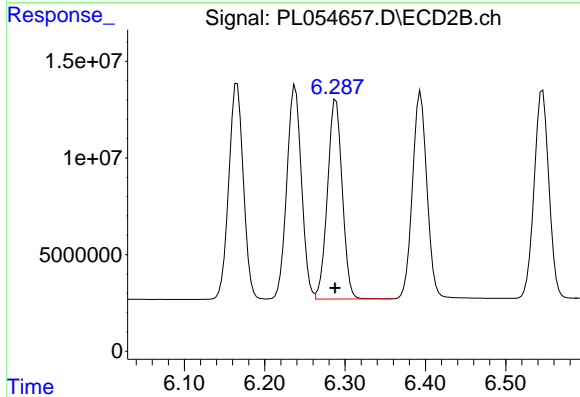


#8 Heptachlor epoxide
 R.T.: 5.931 min
 Delta R.T.: 0.000 min
 Response: 141144396
 Conc: 56.50 ng/ml

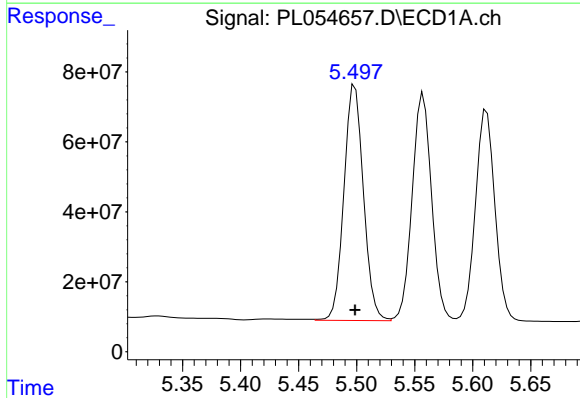


#9 Endosulfan I
 R.T.: 5.612 min
 Delta R.T.: 0.000 min
 Response: 706490735
 Conc: 51.81 ng/ml

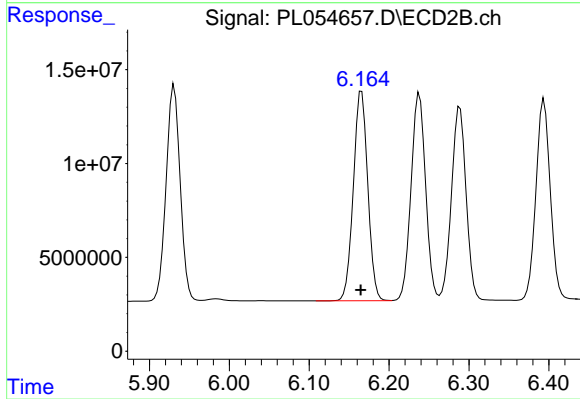
Instrument :
 ECD_L
 ClientSampleId :
 PB125123BS



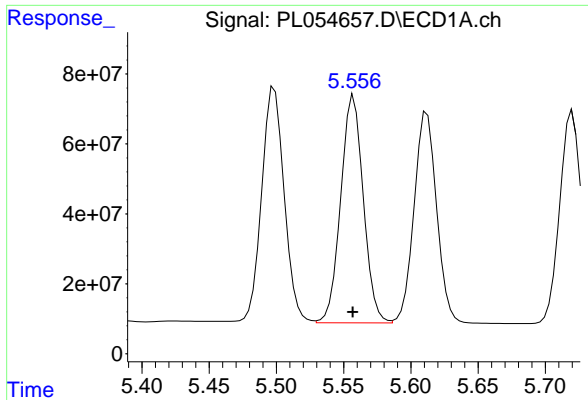
#9 Endosulfan I
 R.T.: 6.289 min
 Delta R.T.: 0.000 min
 Response: 131884203
 Conc: 53.32 ng/ml



#10 gamma-Chlordane
 R.T.: 5.499 min
 Delta R.T.: 0.000 min
 Response: 786776260
 Conc: 51.88 ng/ml



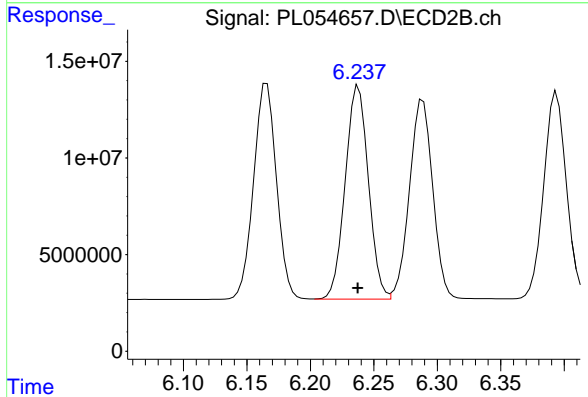
#10 gamma-Chlordane
 R.T.: 6.166 min
 Delta R.T.: 0.001 min
 Response: 140443679
 Conc: 53.31 ng/ml



#11 alpha-Chlordane

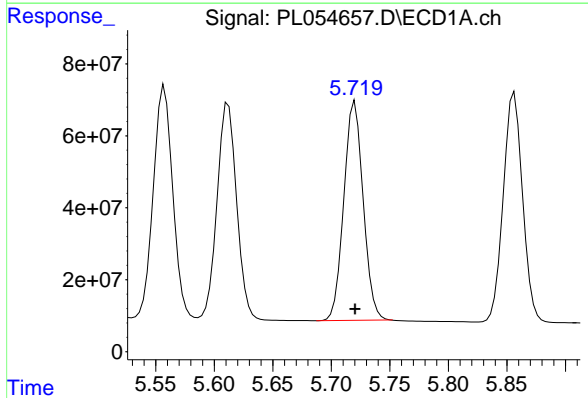
R.T.: 5.557 min
Delta R.T.: 0.000 min
Response: 758716102
Conc: 51.45 ng/ml

Instrument :
ECD_L
ClientSampleId :
PB125123BS



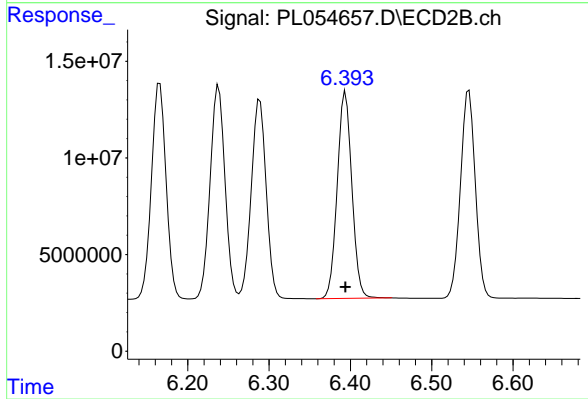
#11 alpha-Chlordane

R.T.: 6.238 min
Delta R.T.: 0.000 min
Response: 140181034
Conc: 53.39 ng/ml



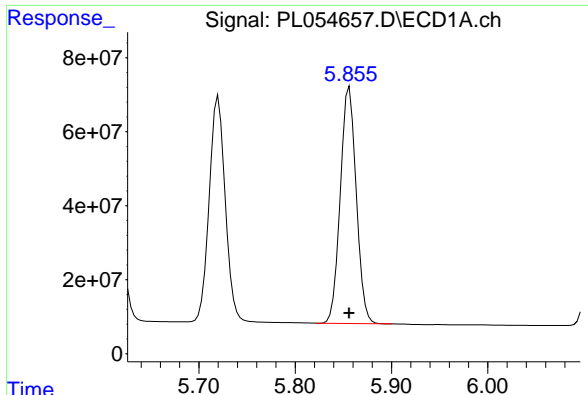
#12 4,4'-DDE

R.T.: 5.720 min
Delta R.T.: 0.000 min
Response: 698688616
Conc: 52.51 ng/ml



#12 4,4'-DDE

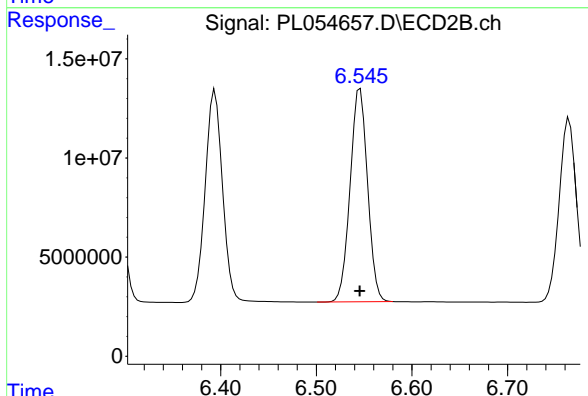
R.T.: 6.394 min
Delta R.T.: 0.000 min
Response: 133649690
Conc: 53.99 ng/ml



#13 Dieldrin

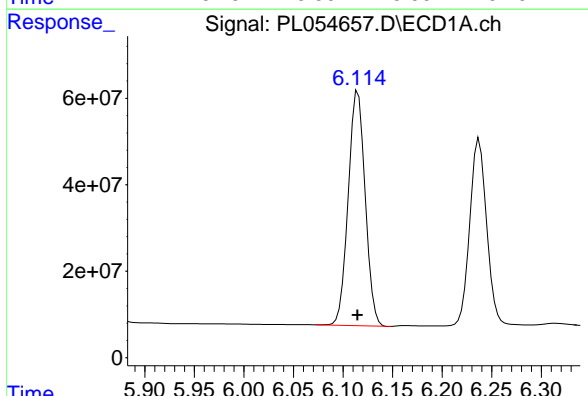
R.T.: 5.856 min
 Delta R.T.: 0.000 min
 Response: 733568518
 Conc: 51.73 ng/ml

Instrument :
 ECD_L
 ClientSampled :
 PB125123BS



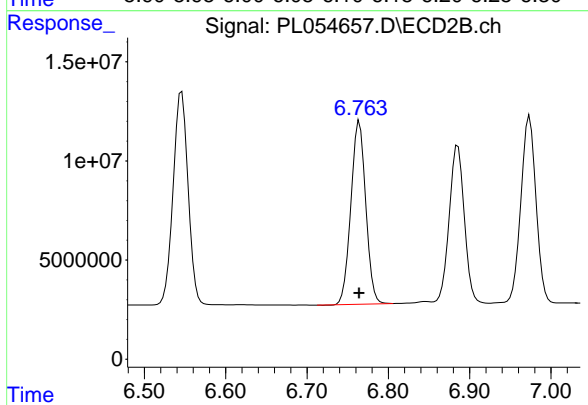
#13 Dieldrin

R.T.: 6.546 min
 Delta R.T.: 0.000 min
 Response: 136838579
 Conc: 53.76 ng/ml



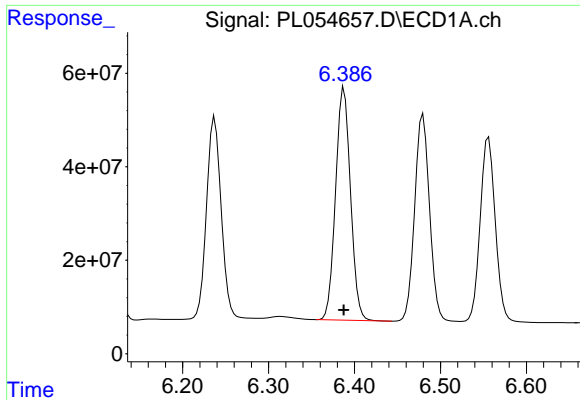
#14 Endrin

R.T.: 6.115 min
 Delta R.T.: 0.000 min
 Response: 646477851
 Conc: 50.77 ng/ml



#14 Endrin

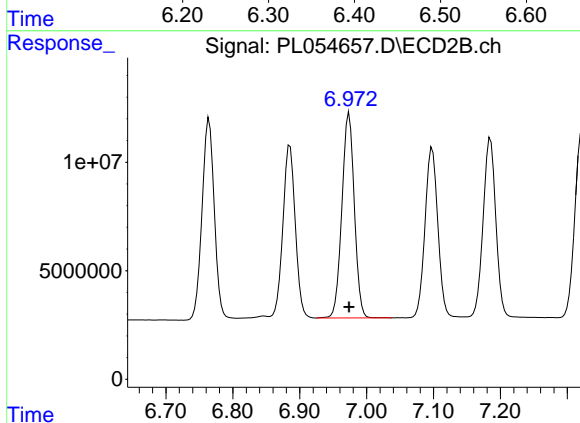
R.T.: 6.765 min
 Delta R.T.: 0.000 min
 Response: 116915241
 Conc: 52.77 ng/ml



#15 Endosulfan II

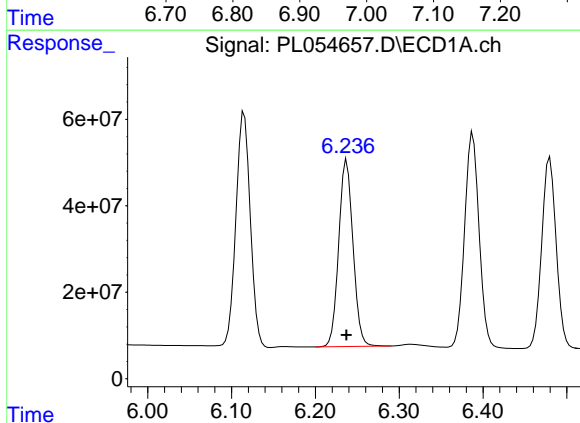
R.T.: 6.388 min
Delta R.T.: 0.000 min
Response: 598880026
Conc: 49.49 ng/ml

Instrument :
ECD_L
ClientSampleId :
PB125123BS



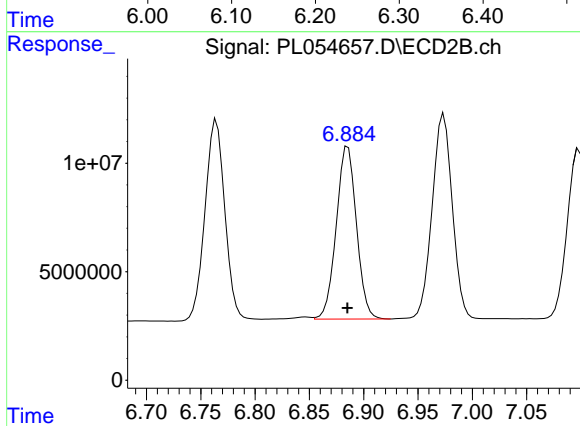
#15 Endosulfan II

R.T.: 6.974 min
Delta R.T.: 0.000 min
Response: 122300328
Conc: 52.02 ng/ml



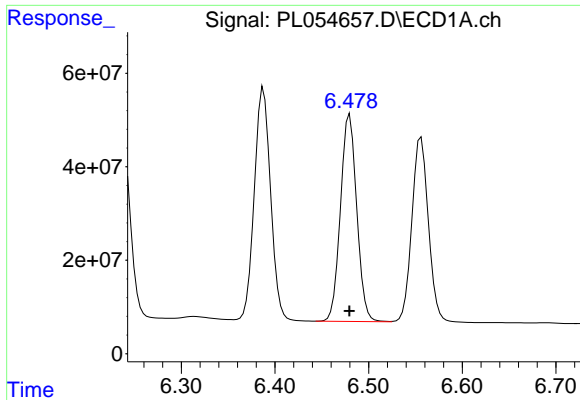
#16 4,4'-DDD

R.T.: 6.237 min
Delta R.T.: 0.000 min
Response: 511538274
Conc: 52.37 ng/ml



#16 4,4'-DDD

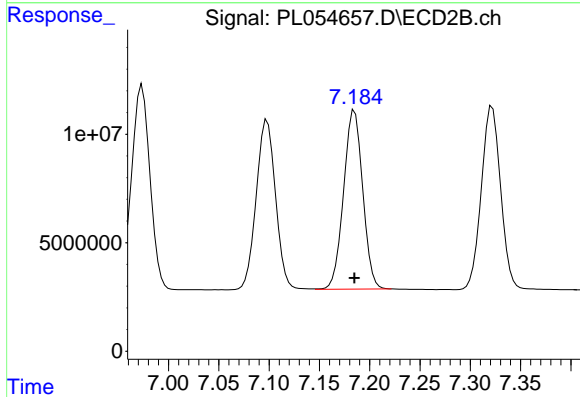
R.T.: 6.885 min
Delta R.T.: 0.000 min
Response: 103057847
Conc: 53.67 ng/ml



#17 4,4'-DDT

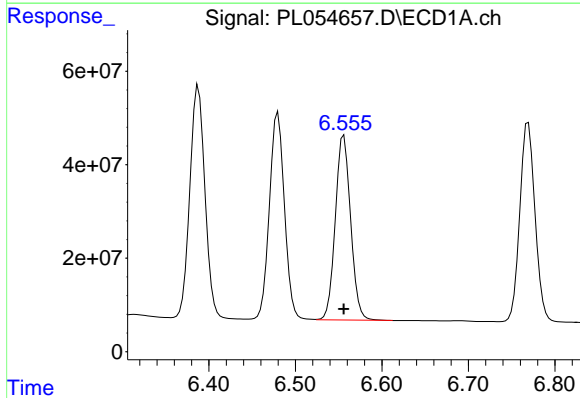
R.T.: 6.480 min
Delta R.T.: 0.000 min
Response: 535103397
Conc: 51.08 ng/ml

Instrument :
ECD_L
ClientSampleId :
PB125123BS



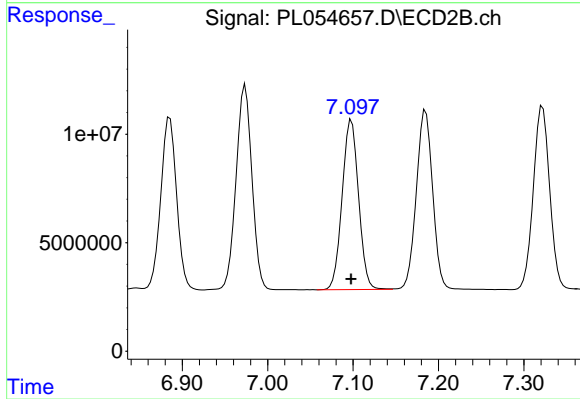
#17 4,4'-DDT

R.T.: 7.185 min
Delta R.T.: 0.000 min
Response: 108796224
Conc: 54.91 ng/ml



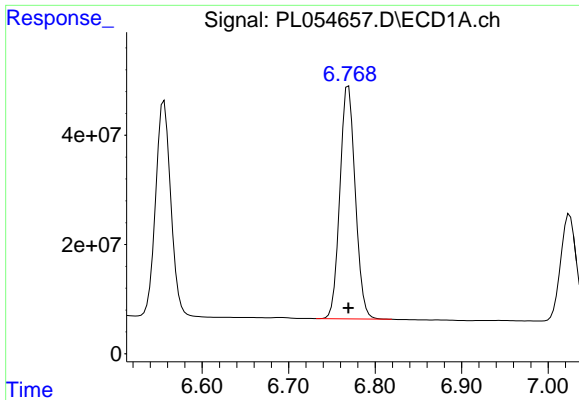
#18 Endrin aldehyde

R.T.: 6.556 min
Delta R.T.: 0.000 min
Response: 482694352
Conc: 48.74 ng/ml



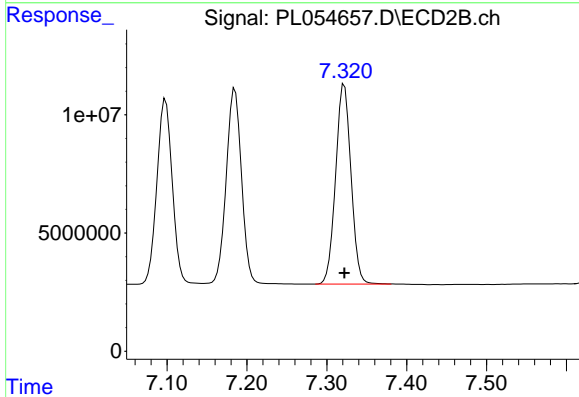
#18 Endrin aldehyde

R.T.: 7.098 min
Delta R.T.: 0.000 min
Response: 104393087
Conc: 53.26 ng/ml

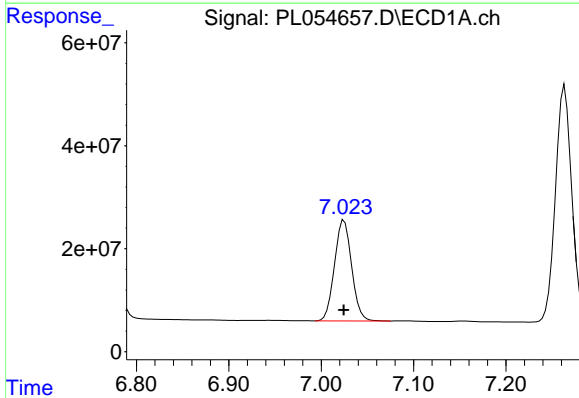


#19 Endosulfan Sulfate
 R.T.: 6.769 min
 Delta R.T.: 0.000 min
 Response: 522619733
 Conc: 48.80 ng/ml

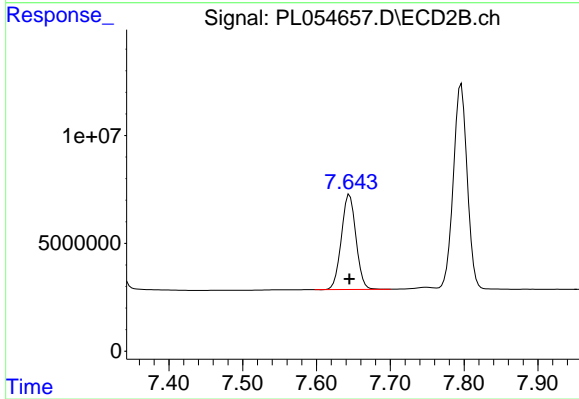
Instrument :
 ECD_L
ClientSampled :
 PB125123BS



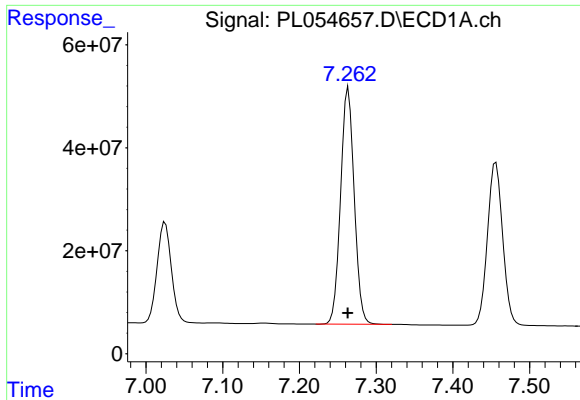
#19 Endosulfan Sulfate
 R.T.: 7.322 min
 Delta R.T.: 0.000 min
 Response: 113123562
 Conc: 53.35 ng/ml



#20 Methoxychlor
 R.T.: 7.025 min
 Delta R.T.: 0.000 min
 Response: 252045783
 Conc: 50.29 ng/ml

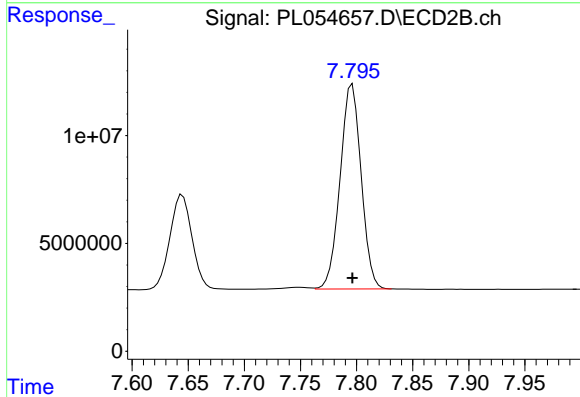


#20 Methoxychlor
 R.T.: 7.645 min
 Delta R.T.: 0.000 min
 Response: 60495942
 Conc: 53.03 ng/ml

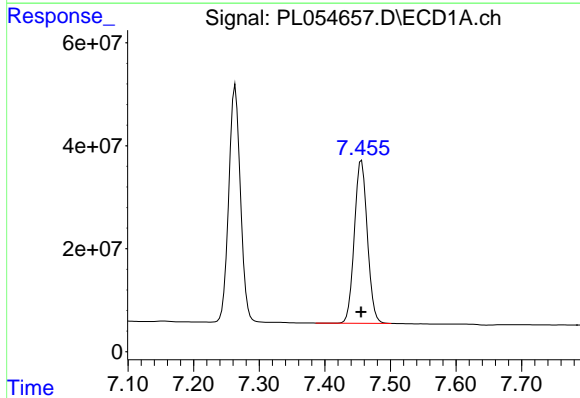


#21 Endrin ketone
 R.T.: 7.264 min
 Delta R.T.: 0.000 min
 Response: 567140580
 Conc: 52.18 ng/ml

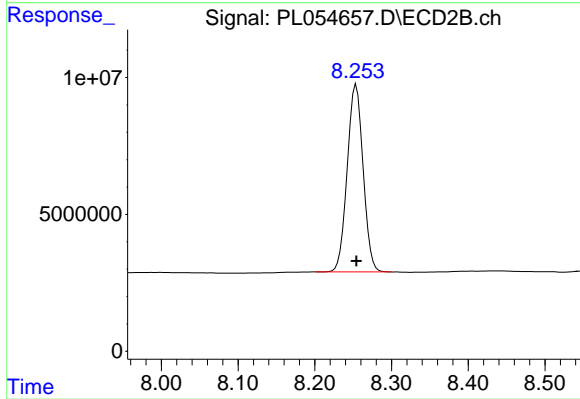
Instrument :
 ECD_L
 ClientSampleId :
 PB125123BS



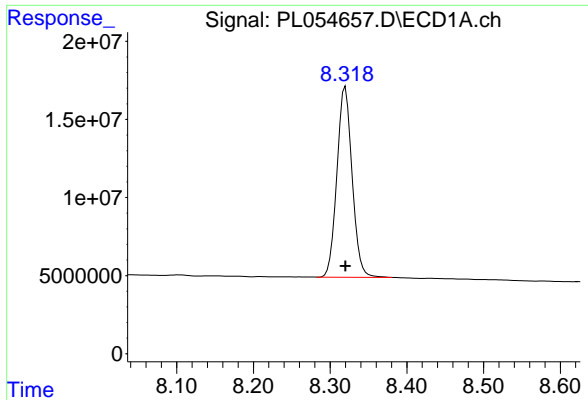
#21 Endrin ketone
 R.T.: 7.796 min
 Delta R.T.: 0.000 min
 Response: 124046492
 Conc: 55.11 ng/ml



#22 Mirex
 R.T.: 7.456 min
 Delta R.T.: 0.000 min
 Response: 435215741
 Conc: 53.61 ng/ml



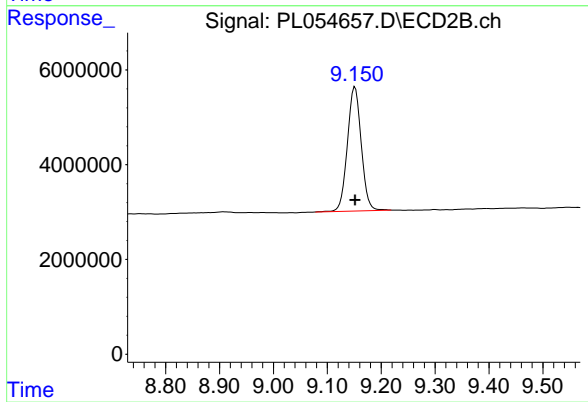
#22 Mirex
 R.T.: 8.254 min
 Delta R.T.: 0.000 min
 Response: 99345844
 Conc: 57.48 ng/ml



#28 Decachlorobiphenyl

R.T.: 8.320 min
Delta R.T.: 0.000 min
Response: 167710669
Conc: 17.51 ng/ml

Instrument :
ECD_L
ClientSampled :
PB125123BS



#28 Decachlorobiphenyl

R.T.: 9.151 min
Delta R.T.: 0.000 min
Response: 46868798
Conc: 19.55 ng/ml