

Data Path : Z:\pestpcbsrv\HPCHEM1\ECD\_L\Data\PL112619\  
 Data File : PL054660.D  
 Signal(s) : Signal #1: ECD1A.ch Signal #2: ECD2B.ch  
 Acq On : 26 Nov 2019 22:45  
 Operator : SG\AJ  
 Sample : K5663-04MS  
 Misc :  
 ALS Vial : 34 Sample Multiplier: 1

Instrument :  
 ECD\_L  
 ClientSampleId :  
 AU-06-112219MS

Integration File signal 1: autoint1.e  
 Integration File signal 2: autoint2.e  
 Quant Time: Nov 27 02:49:32 2019  
 Quant Method : Z:\pestpcbsrv\HPCHEM1\ECD\_L\methods\PL112619.M  
 Quant Title : GC Extractables  
 QLast Update : Wed Nov 27 01:19:55 2019  
 Response via : Initial Calibration  
 Integrator: ChemStation

Volume Inj. : 1 µl  
 Signal #1 Phase : ZB-MR2 Signal #2 Phase: ZB-MR1  
 Signal #1 Info : 30M x 0.32mm x0.2 Signal #2 Info : 30M x 0.32mm x0.5µm

	Compound	RT#1	RT#2	Resp#1	Resp#2	ng/ml	ng/ml
-----							
System Monitoring Compounds							
1)	SA Tetrachlo...	3.539	4.052	209.6E6	53250035	18.014	20.868
28)	SA Decachlor...	8.319	9.151	185.4E6	50040866	19.358	20.873
Target Compounds							
2)	A alpha-BHC	3.982	4.444	1044.4E6	230.0E6	55.014	64.911
3)	MA gamma-BHC...	4.268	4.729	968.4E6	209.5E6	56.814	64.243
4)	MA Heptachlor	4.574	5.239	1000.5E6	189.4E6	56.738	62.766
5)	MB Aldrin	4.826	5.545	925.3E6	176.0E6	56.766	63.175
6)	B beta-BHC	4.519	4.900	413.8E6	86887988	55.788	61.700
7)	B delta-BHC	4.727	5.118	901.0E6	179.0E6	55.429	67.145
8)	B Heptachlo...	5.271	5.931	899.7E6	160.4E6	59.477	64.207
9)	A Endosulfan I	5.612	6.289	780.8E6	153.9E6	57.260	62.231
10)	B gamma-Chl...	5.499	6.165	894.5E6	163.5E6	58.991	62.065
11)	B alpha-Chl...	5.557	6.238	850.2E6	163.1E6	57.654	62.136
12)	B 4,4'-DDE	5.720	6.394	768.9E6	155.6E6	57.791	62.839
13)	MA Dieldrin	5.857	6.546	830.5E6	161.1E6	58.565	63.295
14)	MA Endrin	6.115	6.765	757.3E6	139.3E6	59.474	62.885
15)	B Endosulfa...	6.388	6.974	682.7E6	141.8E6	56.421	60.314
16)	A 4,4'-DDD	6.238	6.885	582.9E6	121.3E6	59.678	63.165
17)	MA 4,4'-DDT	6.479	7.185	621.8E6	128.6E6	59.350	64.907
18)	B Endrin al...	6.556	7.098	546.6E6	119.0E6	55.200	60.707
19)	B Endosulfa...	6.770	7.322	595.1E6	129.9E6	55.574	61.278
20)	A Methoxychlor	7.025	7.645	297.8E6	70682645	59.410	61.965
21)	B Endrin ke...	7.264	7.796	656.4E6	146.1E6	60.392	64.886
22)	Mirex	7.456	8.253	493.5E6	112.6E6	60.782	65.158
-----							

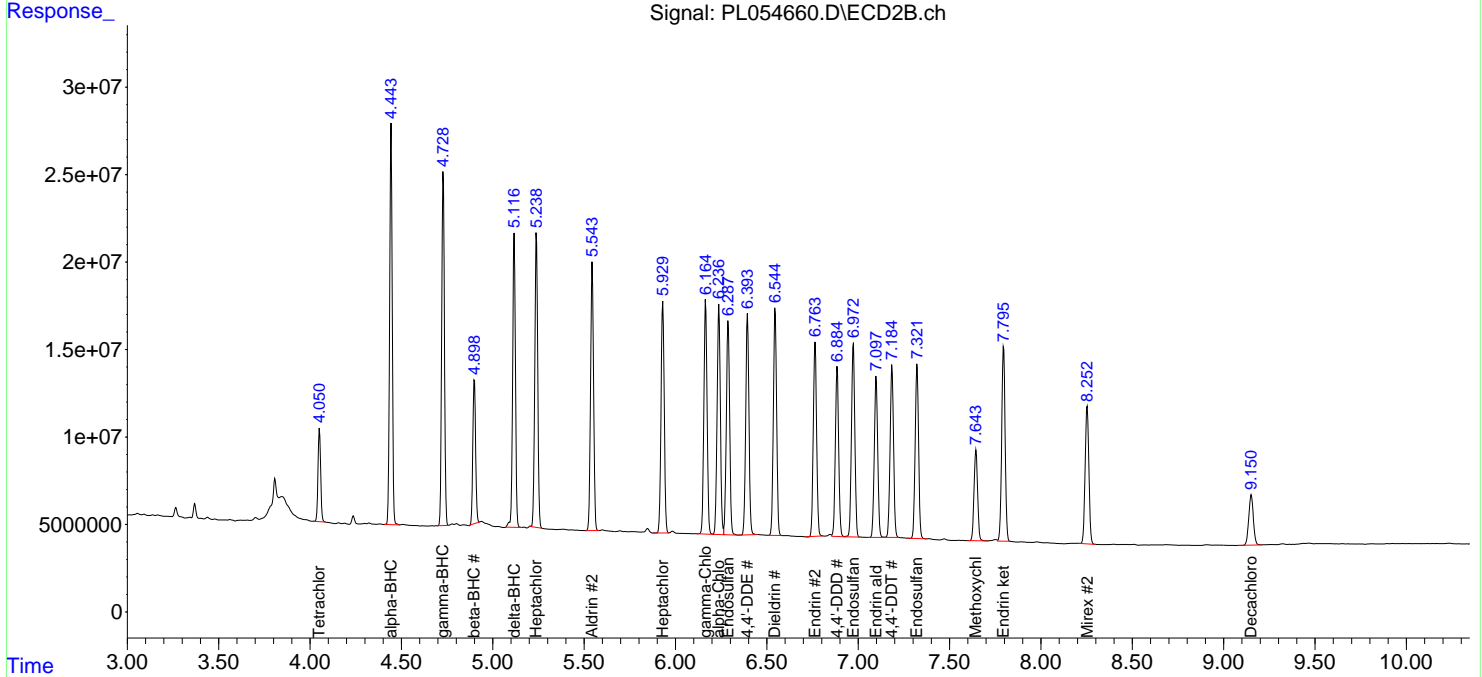
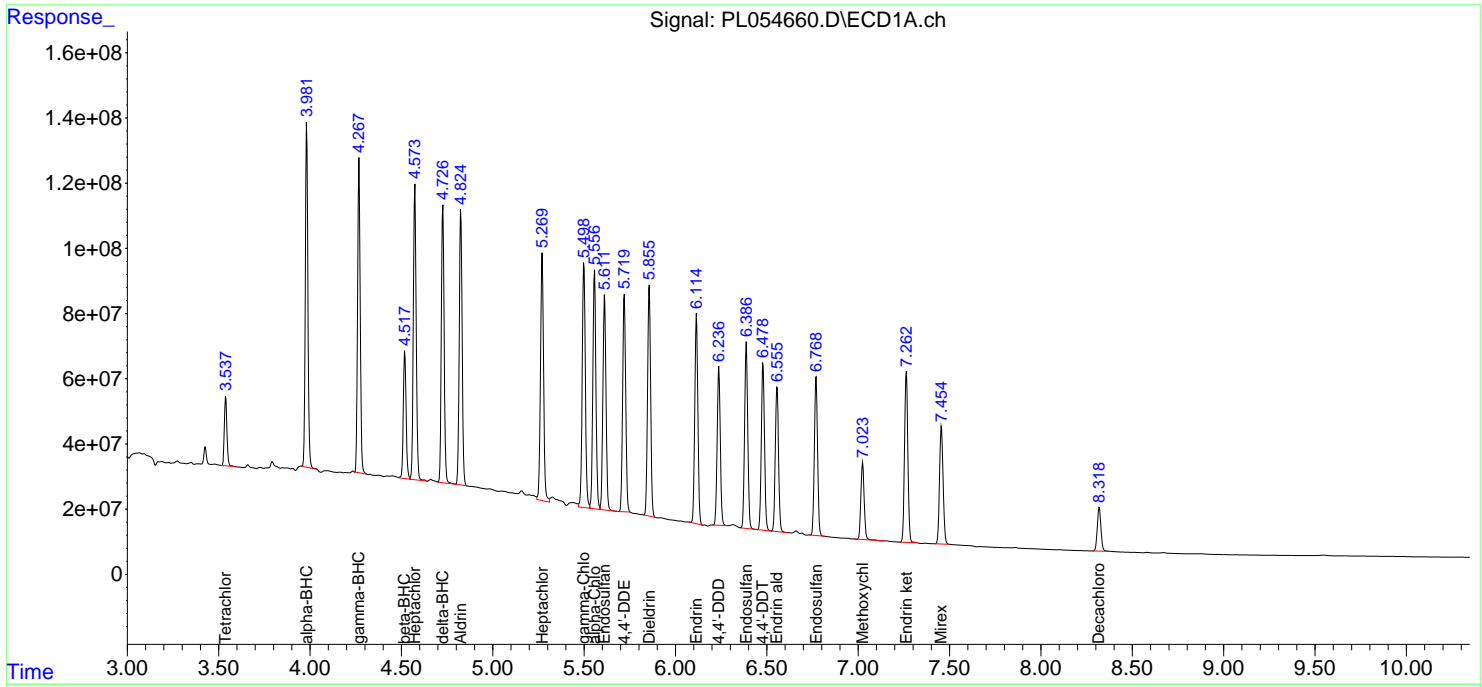
(f)=RT Delta > 1/2 Window (#)=Amounts differ by > 25% (m)=manual int.

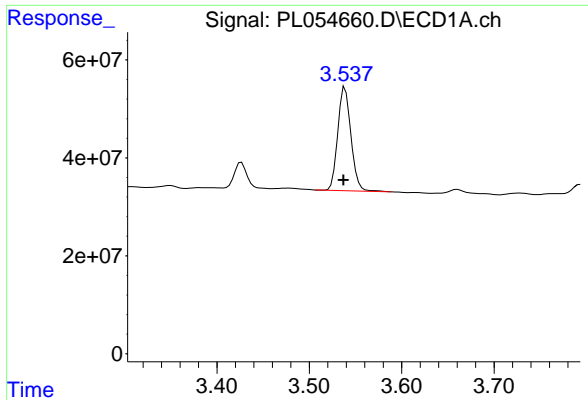
Data Path : Z:\pestpcbsrv\HPCHEM1\ECD\_L\Data\PL112619\  
 Data File : PL054660.D  
 Signal(s) : Signal #1: ECD1A.ch Signal #2: ECD2B.ch  
 Acq On : 26 Nov 2019 22:45  
 Operator : SG\AJ  
 Sample : K5663-04MS  
 Misc :  
 ALS Vial : 34 Sample Multiplier: 1

Instrument :  
 ECD\_L  
 ClientSampleId :  
 AU-06-112219MS

Integration File signal 1: autoint1.e  
 Integration File signal 2: autoint2.e  
 Quant Time: Nov 27 02:49:32 2019  
 Quant Method : Z:\pestpcbsrv\HPCHEM1\ECD\_L\methods\PL112619.M  
 Quant Title : GC Extractables  
 QLast Update : Wed Nov 27 01:19:55 2019  
 Response via : Initial Calibration  
 Integrator: ChemStation

Volume Inj. : 1 µl  
 Signal #1 Phase : ZB-MR2 Signal #2 Phase: ZB-MR1  
 Signal #1 Info : 30M x 0.32mm x0.2 Signal #2 Info : 30M x 0.32mm x0.5µm

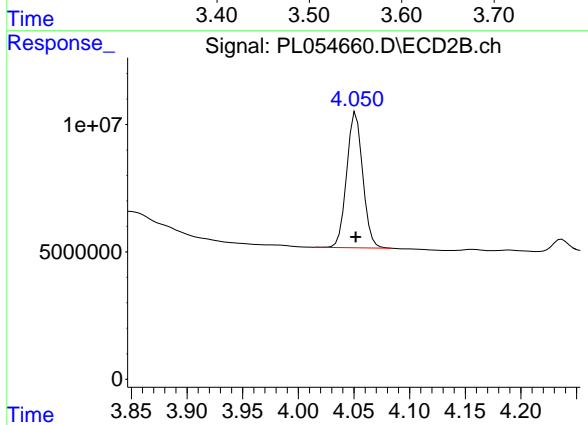




#1 Tetrachloro-m-xylene

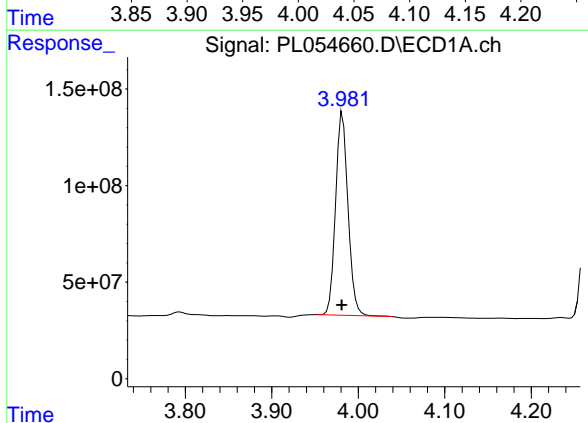
R.T.: 3.539 min  
Delta R.T.: 0.002 min  
Response: 209581376  
Conc: 18.01 ng/ml

Instrument :  
ECD\_L  
ClientSampleId :  
AU-06-112219MS



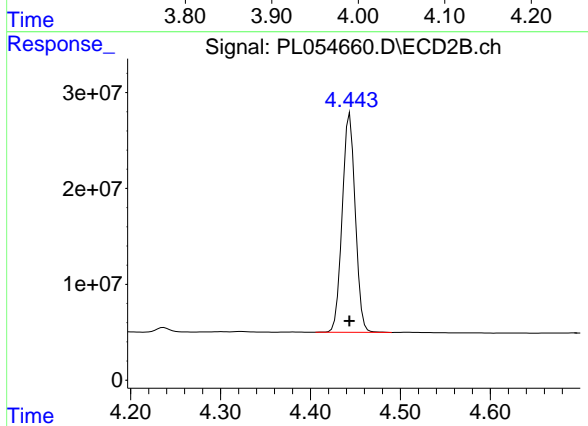
#1 Tetrachloro-m-xylene

R.T.: 4.052 min  
Delta R.T.: 0.000 min  
Response: 53250035  
Conc: 20.87 ng/ml



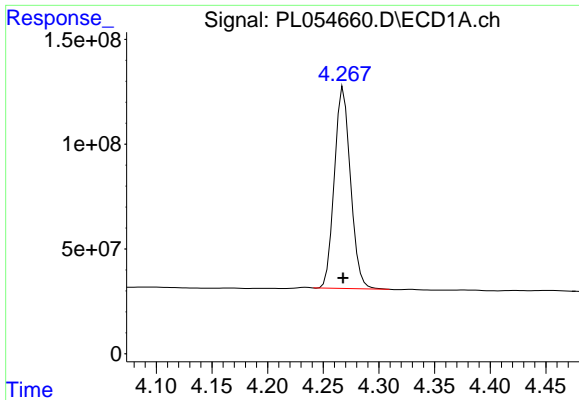
#2 alpha-BHC

R.T.: 3.982 min  
Delta R.T.: 0.001 min  
Response: 1044399781  
Conc: 55.01 ng/ml



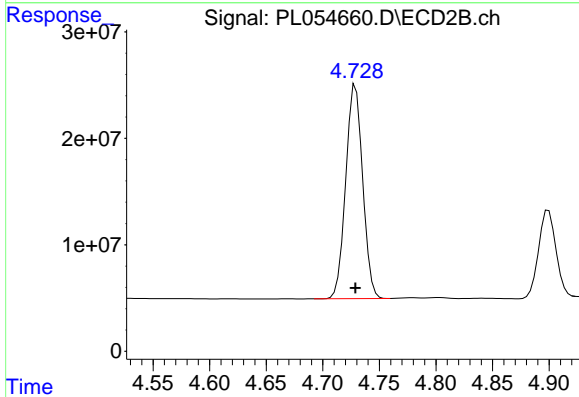
#2 alpha-BHC

R.T.: 4.444 min  
Delta R.T.: 0.000 min  
Response: 229963255  
Conc: 64.91 ng/ml

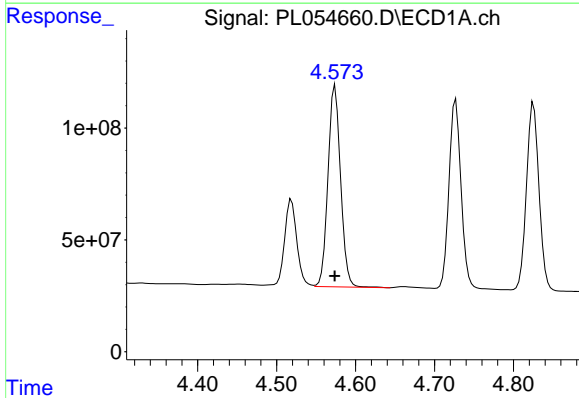


#3 gamma-BHC (Lindane)  
 R.T.: 4.268 min  
 Delta R.T.: 0.000 min  
 Response: 968442828  
 Conc: 56.81 ng/ml

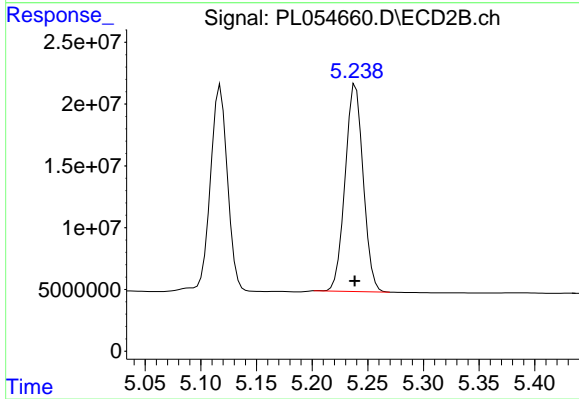
Instrument :  
 ECD\_L  
 ClientSampleId :  
 AU-06-112219MS



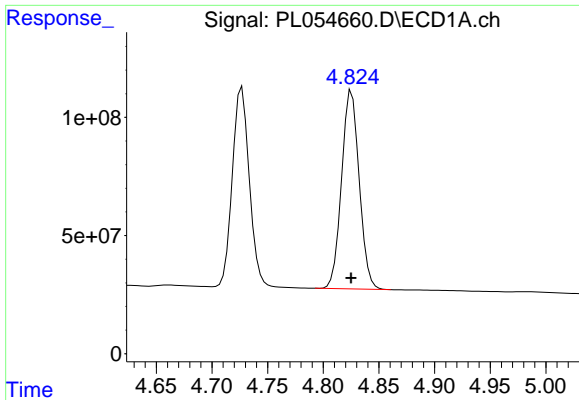
#3 gamma-BHC (Lindane)  
 R.T.: 4.729 min  
 Delta R.T.: 0.000 min  
 Response: 209465707  
 Conc: 64.24 ng/ml



#4 Heptachlor  
 R.T.: 4.574 min  
 Delta R.T.: 0.000 min  
 Response: 1000485591  
 Conc: 56.74 ng/ml

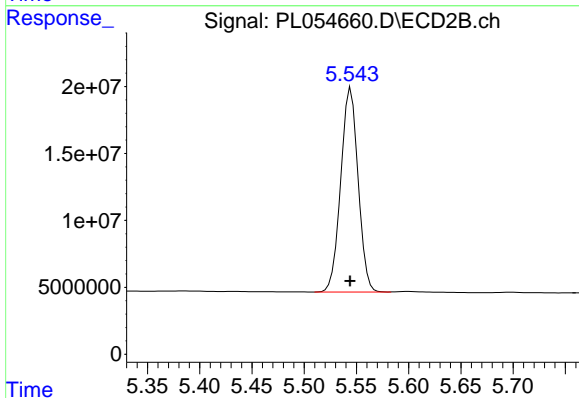


#4 Heptachlor  
 R.T.: 5.239 min  
 Delta R.T.: 0.000 min  
 Response: 189426457  
 Conc: 62.77 ng/ml

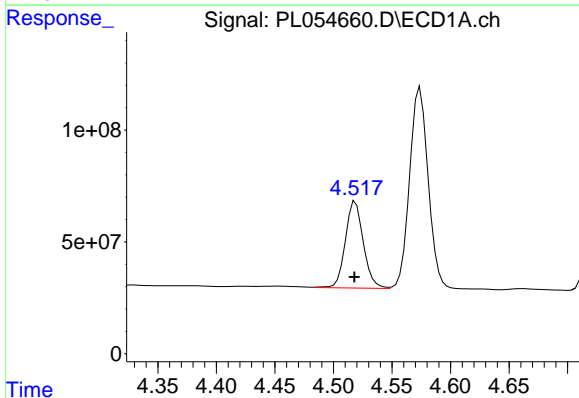


#5 Aldrin  
 R.T.: 4.826 min  
 Delta R.T.: 0.000 min  
 Response: 925282842  
 Conc: 56.77 ng/ml

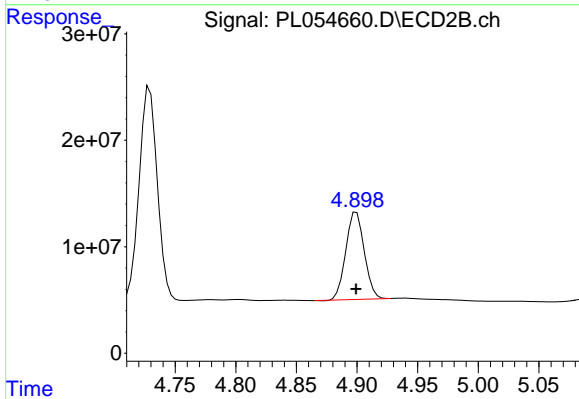
Instrument :  
 ECD\_L  
 ClientSampleId :  
 AU-06-112219MS



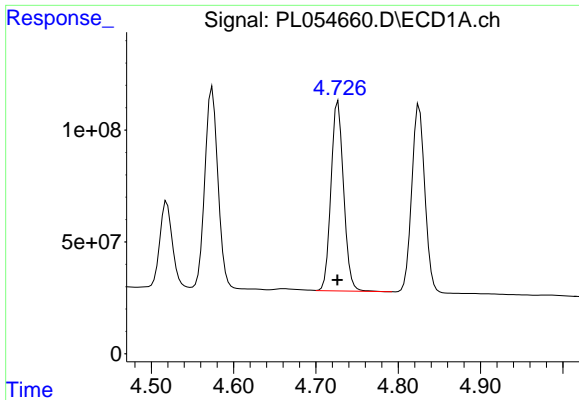
#5 Aldrin  
 R.T.: 5.545 min  
 Delta R.T.: 0.000 min  
 Response: 176036498  
 Conc: 63.18 ng/ml



#6 beta-BHC  
 R.T.: 4.519 min  
 Delta R.T.: 0.000 min  
 Response: 413774673  
 Conc: 55.79 ng/ml



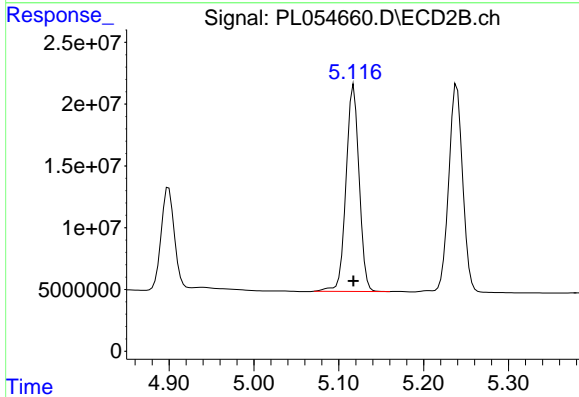
#6 beta-BHC  
 R.T.: 4.900 min  
 Delta R.T.: 0.000 min  
 Response: 86887988  
 Conc: 61.70 ng/ml



#7 delta-BHC

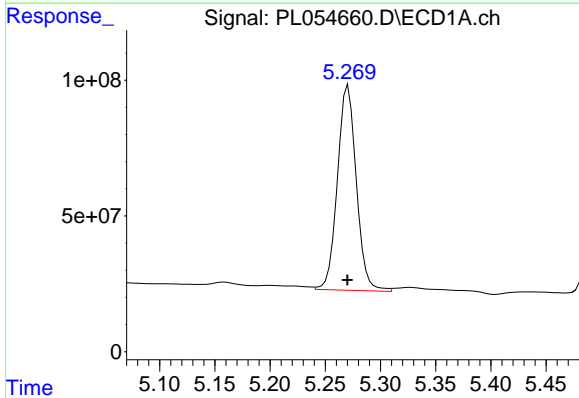
R.T.: 4.727 min  
Delta R.T.: 0.000 min  
Response: 901008239  
Conc: 55.43 ng/ml

Instrument :  
ECD\_L  
ClientSampleId :  
AU-06-112219MS



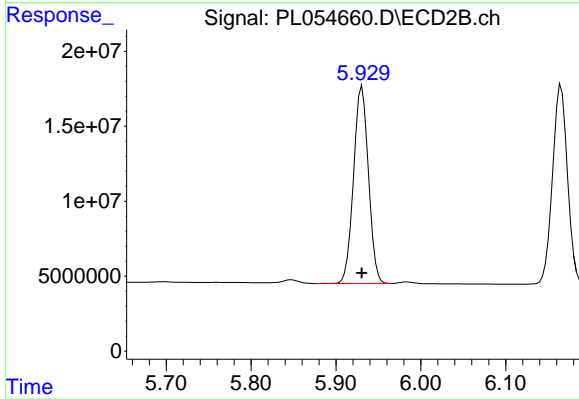
#7 delta-BHC

R.T.: 5.118 min  
Delta R.T.: 0.000 min  
Response: 179023142  
Conc: 67.15 ng/ml



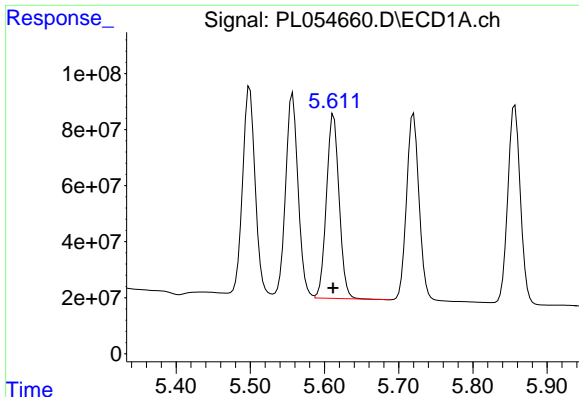
#8 Heptachlor epoxide

R.T.: 5.271 min  
Delta R.T.: 0.000 min  
Response: 899657738  
Conc: 59.48 ng/ml



#8 Heptachlor epoxide

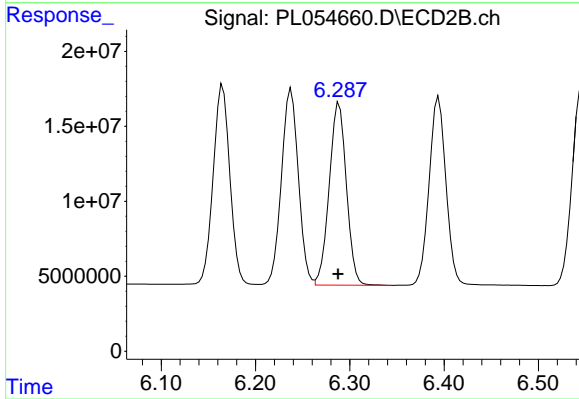
R.T.: 5.931 min  
Delta R.T.: 0.000 min  
Response: 160400684  
Conc: 64.21 ng/ml



#9 Endosulfan I

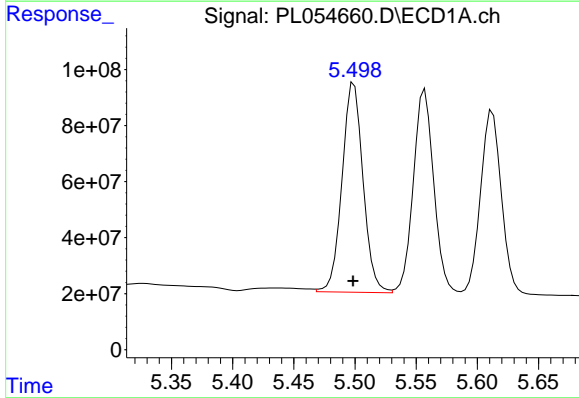
R.T.: 5.612 min  
 Delta R.T.: 0.000 min  
 Response: 780837313  
 Conc: 57.26 ng/ml

Instrument :  
 ECD\_L  
 ClientSampleId :  
 AU-06-112219MS



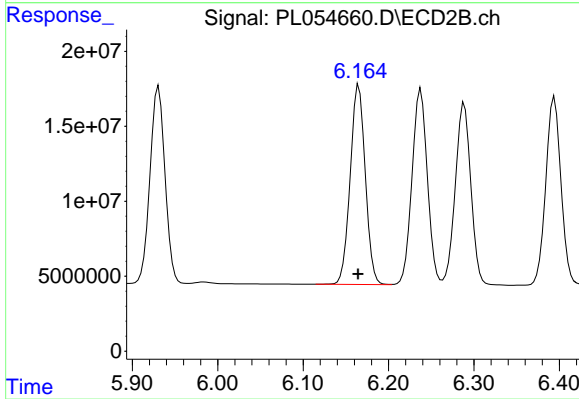
#9 Endosulfan I

R.T.: 6.289 min  
 Delta R.T.: 0.000 min  
 Response: 153928479  
 Conc: 62.23 ng/ml



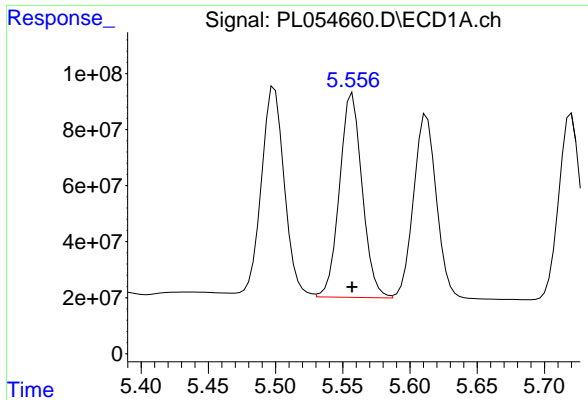
#10 gamma-Chlordane

R.T.: 5.499 min  
 Delta R.T.: 0.000 min  
 Response: 894544695  
 Conc: 58.99 ng/ml



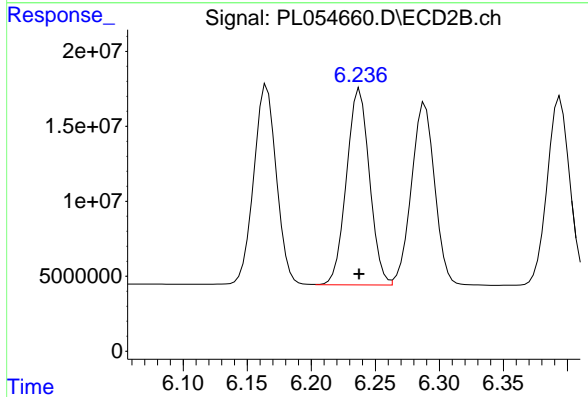
#10 gamma-Chlordane

R.T.: 6.165 min  
 Delta R.T.: 0.000 min  
 Response: 163501837  
 Conc: 62.06 ng/ml

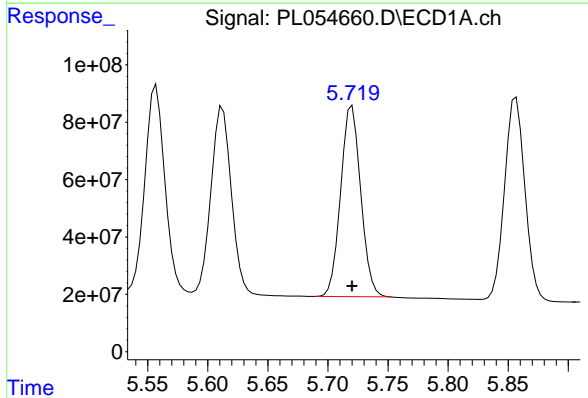


#11 alpha-Chlordane  
R.T.: 5.557 min  
Delta R.T.: 0.000 min  
Response: 850160121  
Conc: 57.65 ng/ml

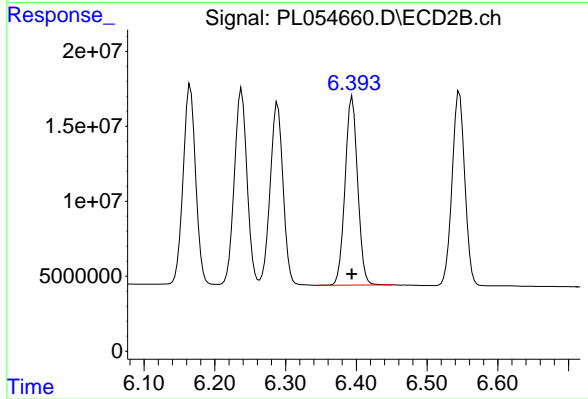
Instrument :  
ECD\_L  
ClientSampleId :  
AU-06-112219MS



#11 alpha-Chlordane  
R.T.: 6.238 min  
Delta R.T.: 0.000 min  
Response: 163147831  
Conc: 62.14 ng/ml

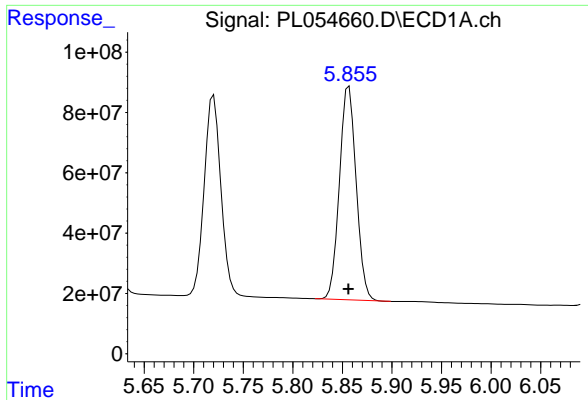


#12 4,4'-DDE  
R.T.: 5.720 min  
Delta R.T.: 0.000 min  
Response: 768892315  
Conc: 57.79 ng/ml



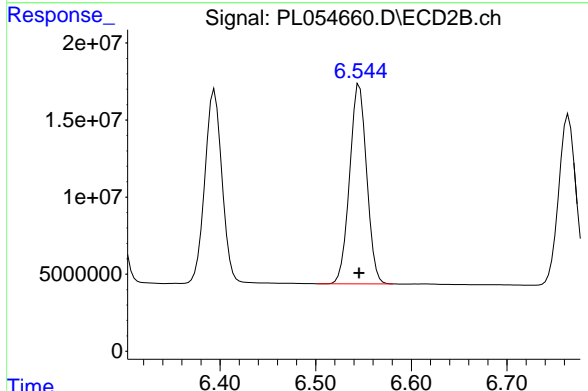
#12 4,4'-DDE  
R.T.: 6.394 min  
Delta R.T.: 0.000 min  
Response: 155552093  
Conc: 62.84 ng/ml



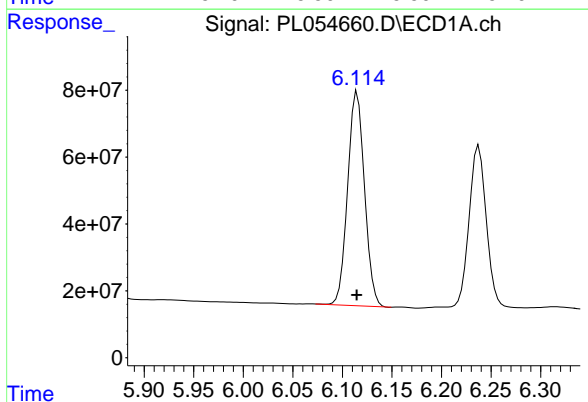


#13 Dieldrin  
 R.T.: 5.857 min  
 Delta R.T.: 0.000 min  
 Response: 830498050  
 Conc: 58.57 ng/ml

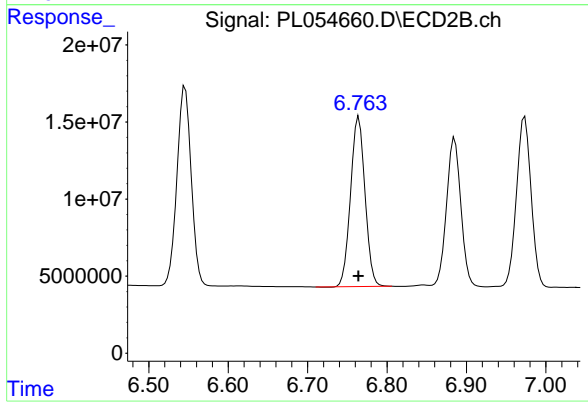
Instrument :  
 ECD\_L  
 ClientSampleId :  
 AU-06-112219MS



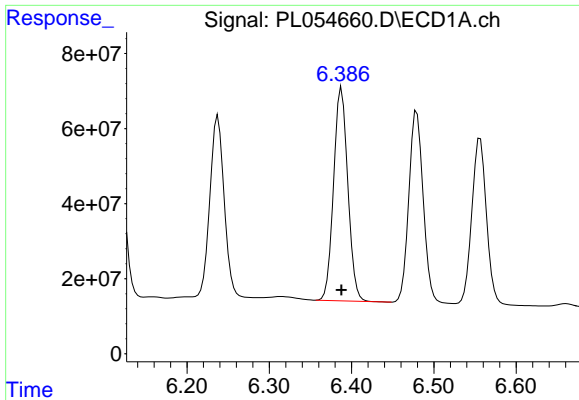
#13 Dieldrin  
 R.T.: 6.546 min  
 Delta R.T.: 0.000 min  
 Response: 161105625  
 Conc: 63.29 ng/ml



#14 Endrin  
 R.T.: 6.115 min  
 Delta R.T.: 0.000 min  
 Response: 757322195  
 Conc: 59.47 ng/ml



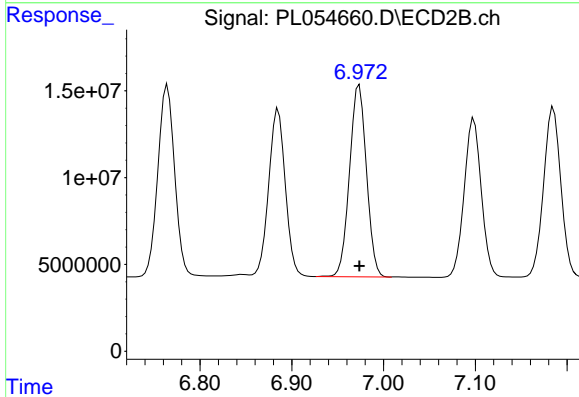
#14 Endrin  
 R.T.: 6.765 min  
 Delta R.T.: 0.000 min  
 Response: 139315787  
 Conc: 62.89 ng/ml



#15 Endosulfan II

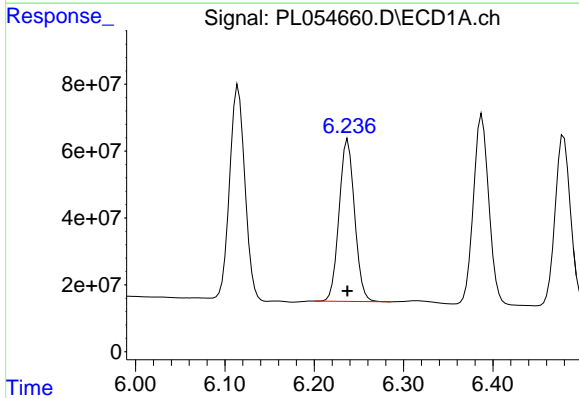
R.T.: 6.388 min  
 Delta R.T.: 0.000 min  
 Response: 682704027  
 Conc: 56.42 ng/ml

Instrument :  
 ECD\_L  
 ClientSampleId :  
 AU-06-112219MS



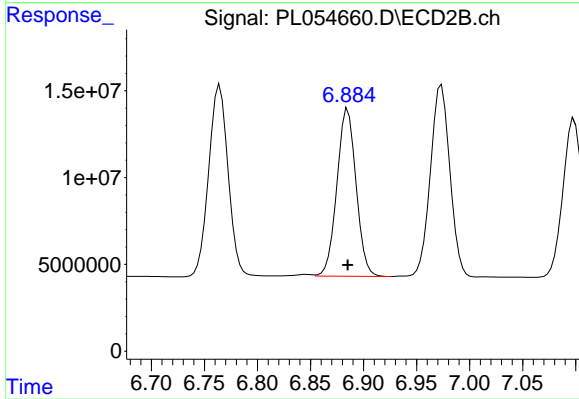
#15 Endosulfan II

R.T.: 6.974 min  
 Delta R.T.: 0.000 min  
 Response: 141798822  
 Conc: 60.31 ng/ml



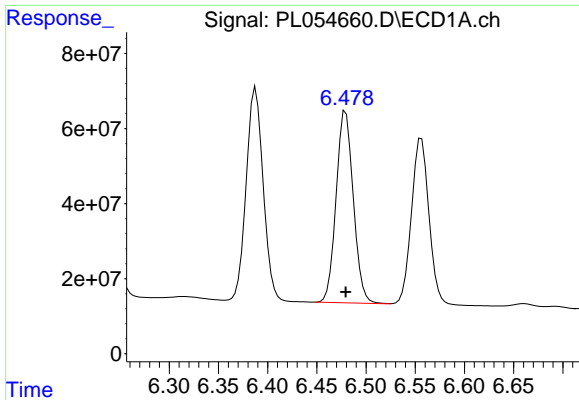
#16 4,4'-DDD

R.T.: 6.238 min  
 Delta R.T.: 0.000 min  
 Response: 582897309  
 Conc: 59.68 ng/ml



#16 4,4'-DDD

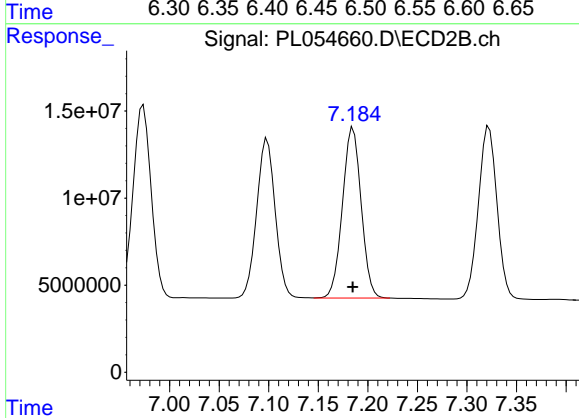
R.T.: 6.885 min  
 Delta R.T.: 0.000 min  
 Response: 121282187  
 Conc: 63.17 ng/ml



#17 4,4'-DDT

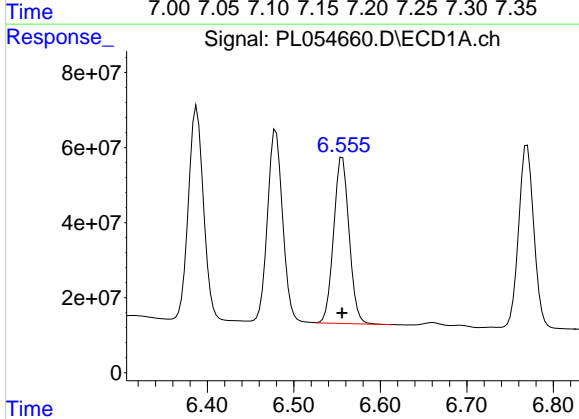
R.T.: 6.479 min  
Delta R.T.: 0.000 min  
Response: 621768667  
Conc: 59.35 ng/ml

Instrument :  
ECD\_L  
ClientSampleId :  
AU-06-112219MS



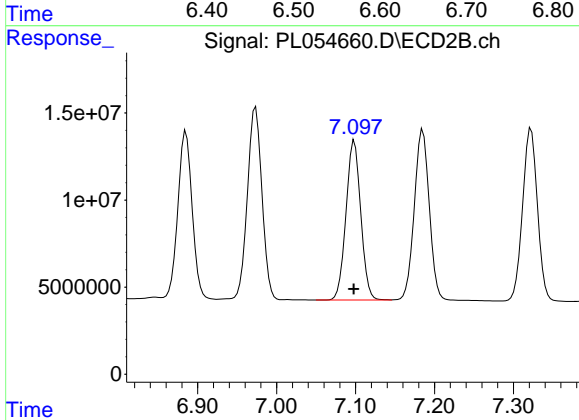
#17 4,4'-DDT

R.T.: 7.185 min  
Delta R.T.: 0.000 min  
Response: 128603509  
Conc: 64.91 ng/ml



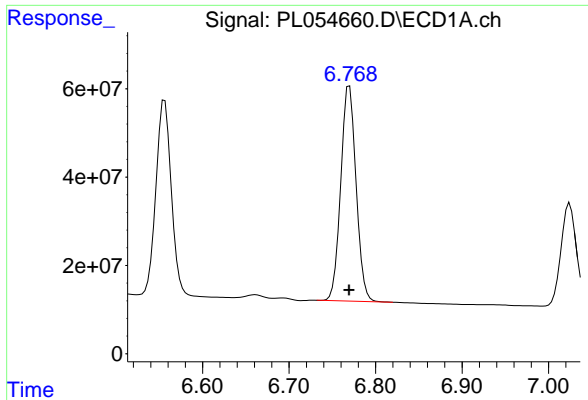
#18 Endrin aldehyde

R.T.: 6.556 min  
Delta R.T.: 0.000 min  
Response: 546645901  
Conc: 55.20 ng/ml



#18 Endrin aldehyde

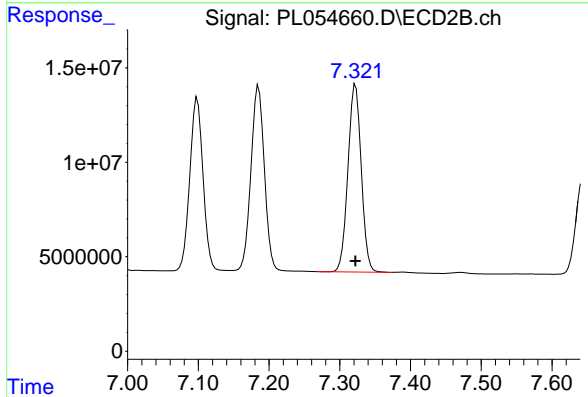
R.T.: 7.098 min  
Delta R.T.: 0.000 min  
Response: 118997559  
Conc: 60.71 ng/ml



#19 Endosulfan Sulfate

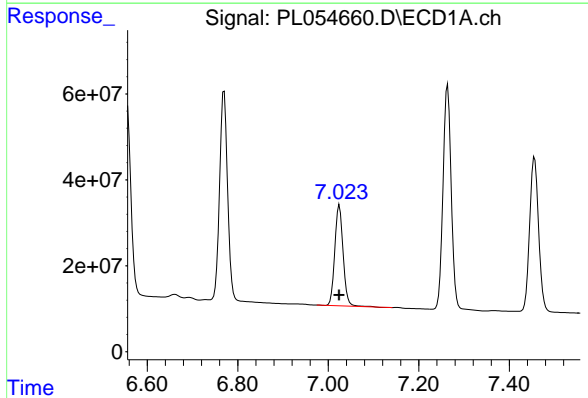
R.T.: 6.770 min  
Delta R.T.: 0.000 min  
Response: 595129787  
Conc: 55.57 ng/ml

Instrument :  
ECD\_L  
ClientSampleId :  
AU-06-112219MS



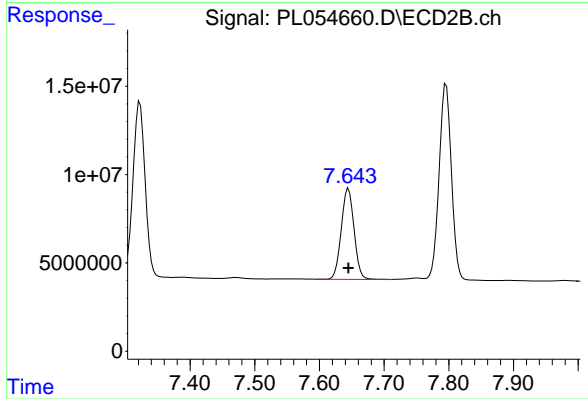
#19 Endosulfan Sulfate

R.T.: 7.322 min  
Delta R.T.: 0.000 min  
Response: 129940283  
Conc: 61.28 ng/ml



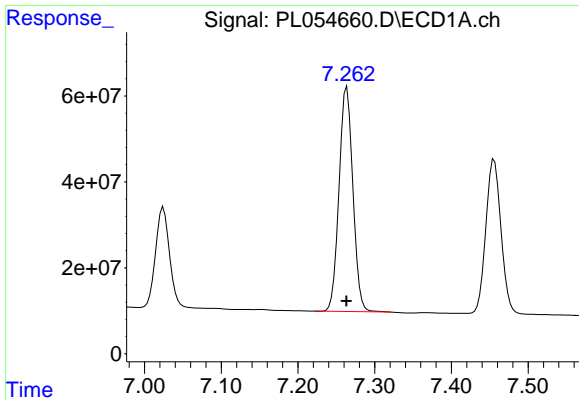
#20 Methoxychlor

R.T.: 7.025 min  
Delta R.T.: 0.000 min  
Response: 297751587  
Conc: 59.41 ng/ml



#20 Methoxychlor

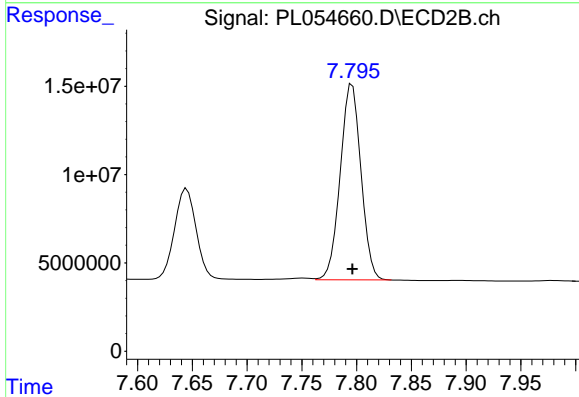
R.T.: 7.645 min  
Delta R.T.: 0.000 min  
Response: 70682645  
Conc: 61.96 ng/ml



#21 Endrin ketone

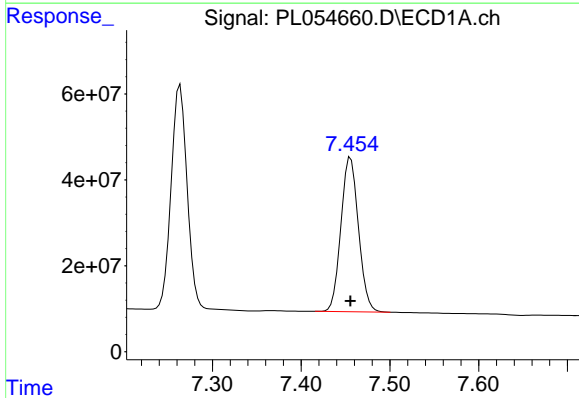
R.T.: 7.264 min  
 Delta R.T.: 0.000 min  
 Response: 656403787  
 Conc: 60.39 ng/ml

Instrument :  
 ECD\_L  
 ClientSampleId :  
 AU-06-112219MS



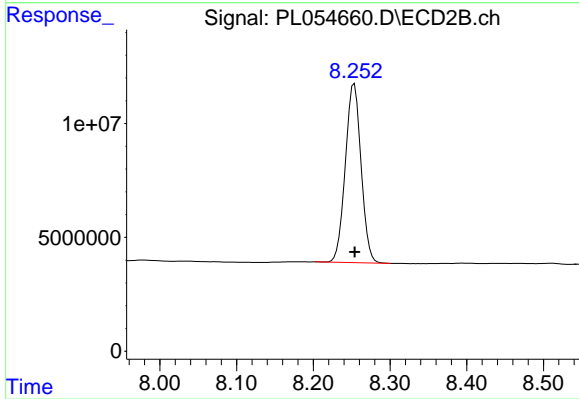
#21 Endrin ketone

R.T.: 7.796 min  
 Delta R.T.: 0.000 min  
 Response: 146052159  
 Conc: 64.89 ng/ml



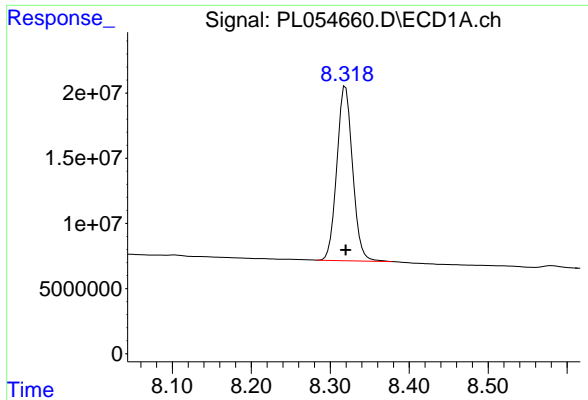
#22 Mirex

R.T.: 7.456 min  
 Delta R.T.: 0.000 min  
 Response: 493454527  
 Conc: 60.78 ng/ml



#22 Mirex

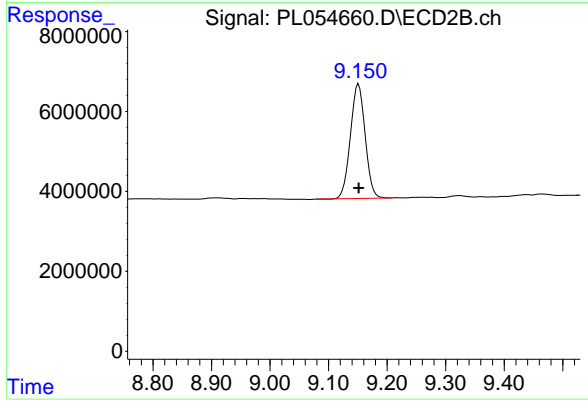
R.T.: 8.253 min  
 Delta R.T.: 0.000 min  
 Response: 112614516  
 Conc: 65.16 ng/ml



#28 Decachlorobiphenyl

R.T.: 8.319 min  
Delta R.T.: 0.000 min  
Response: 185374142  
Conc: 19.36 ng/ml

Instrument :  
ECD\_L  
ClientSampleId :  
AU-06-112219MS



#28 Decachlorobiphenyl

R.T.: 9.151 min  
Delta R.T.: 0.000 min  
Response: 50040866  
Conc: 20.87 ng/ml