

Data Path : Z:\pestpcbsrv\HPCHEM1\ECD_L\Data\PL112619\
 Data File : PL054661.D
 Signal(s) : Signal #1: ECD1A.ch Signal #2: ECD2B.ch
 Acq On : 26 Nov 2019 22:59
 Operator : SG\AJ
 Sample : K5663-04MSD
 Misc :
 ALS Vial : 35 Sample Multiplier: 1

Instrument :
 ECD_L
 ClientSampleId :
 AU-06-112219MSD

Integration File signal 1: autoint1.e
 Integration File signal 2: autoint2.e
 Quant Time: Nov 27 02:49:46 2019
 Quant Method : Z:\pestpcbsrv\HPCHEM1\ECD_L\methods\PL112619.M
 Quant Title : GC Extractables
 QLast Update : Wed Nov 27 01:19:55 2019
 Response via : Initial Calibration
 Integrator: ChemStation

Volume Inj. : 1 µl
 Signal #1 Phase : ZB-MR2 Signal #2 Phase: ZB-MR1
 Signal #1 Info : 30M x 0.32mm x0.2 Signal #2 Info : 30M x 0.32mm x0.5µm

	Compound	RT#1	RT#2	Resp#1	Resp#2	ng/ml	ng/ml

System Monitoring Compounds							
1)	SA Tetrachlo...	3.539	4.052	214.9E6	54759280	18.471	21.459
28)	SA Decachlor...	8.319	9.151	186.5E6	50850411	19.479	21.210
Target Compounds							
2)	A alpha-BHC	3.982	4.443	1076.8E6	235.6E6	56.722	66.500
3)	MA gamma-BHC...	4.268	4.730	996.6E6	215.3E6	58.468	66.024
4)	MA Heptachlor	4.574	5.239	1018.5E6	194.4E6	57.761	64.415
5)	MB Aldrin	4.826	5.544	949.8E6	179.8E6	58.272	64.541
6)	B beta-BHC	4.519	4.900	420.8E6	89923349	56.736	63.856
7)	B delta-BHC	4.727	5.118	923.8E6	185.1E6	56.828	69.430
8)	B Heptachlo...	5.271	5.931	900.0E6	166.1E6	59.499	66.490
9)	A Endosulfan I	5.613	6.289	795.9E6	157.5E6	58.368	63.691
10)	B gamma-Chl...	5.499	6.165	898.3E6	169.6E6	59.240	64.367
11)	B alpha-Chl...	5.558	6.238	862.2E6	167.8E6	58.468	63.915
12)	B 4,4'-DDE	5.721	6.394	789.4E6	159.8E6	59.333	64.545
13)	MA Dieldrin	5.857	6.546	853.0E6	165.2E6	60.150	64.892
14)	MA Endrin	6.116	6.765	769.1E6	143.4E6	60.399	64.716
15)	B Endosulfa...	6.388	6.974	702.0E6	147.5E6	58.017	62.746
16)	A 4,4'-DDD	6.238	6.886	593.9E6	124.5E6	60.801	64.825
17)	MA 4,4'-DDT	6.480	7.185	640.2E6	131.2E6	61.110	66.219
18)	B Endrin al...	6.557	7.098	561.2E6	122.2E6	56.671	62.338
19)	B Endosulfa...	6.770	7.323	614.2E6	133.8E6	57.354	63.116
20)	A Methoxychlor	7.025	7.645	301.5E6	72240102	60.156	63.330
21)	B Endrin ke...	7.264	7.796	669.0E6	149.9E6	61.552	66.613
22)	Mirex	7.456	8.253	507.6E6	116.1E6	62.527	67.152

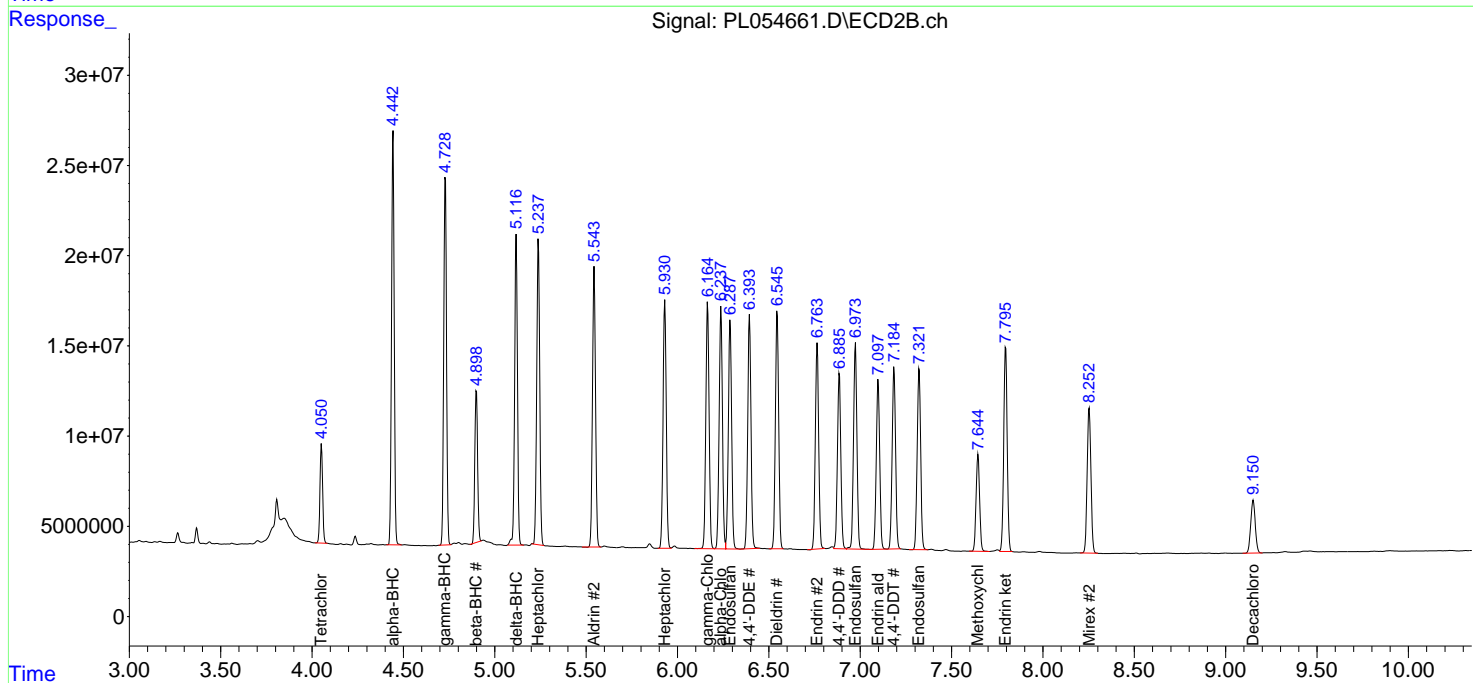
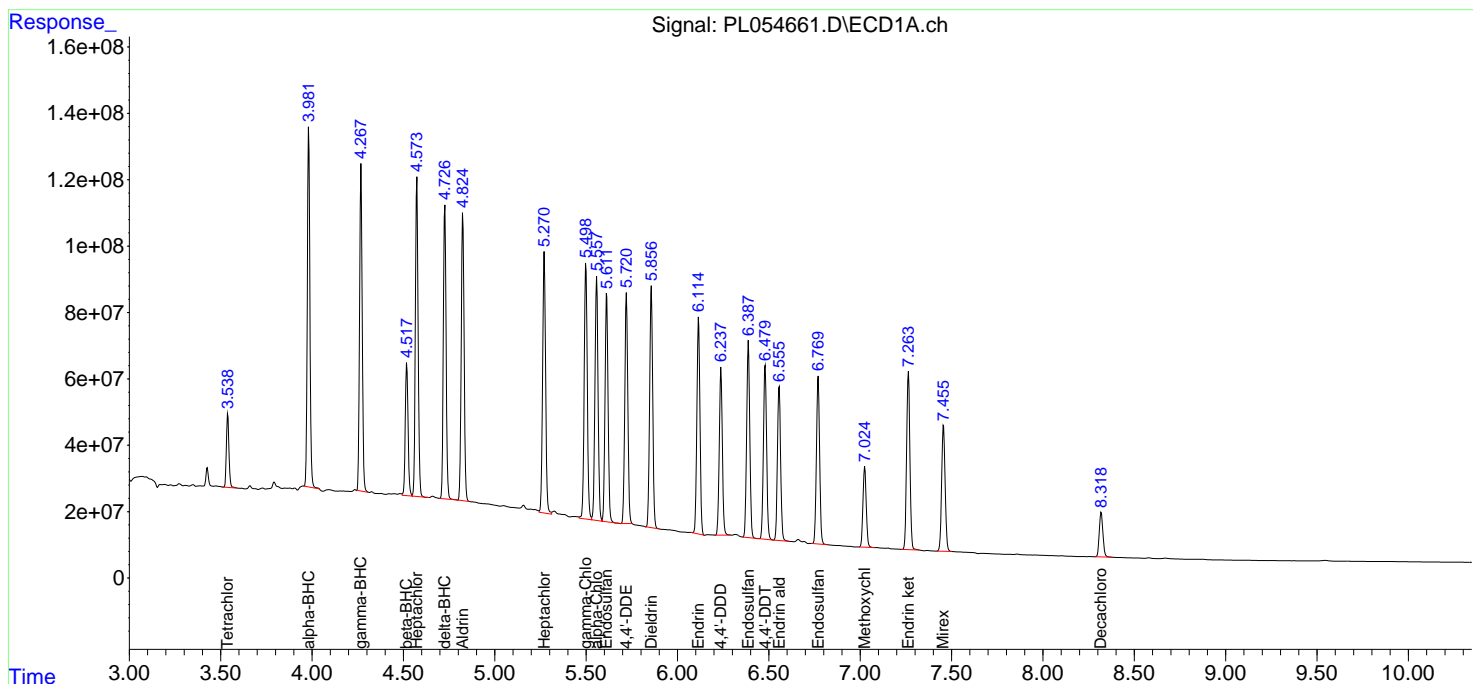
(f)=RT Delta > 1/2 Window (#)=Amounts differ by > 25% (m)=manual int.

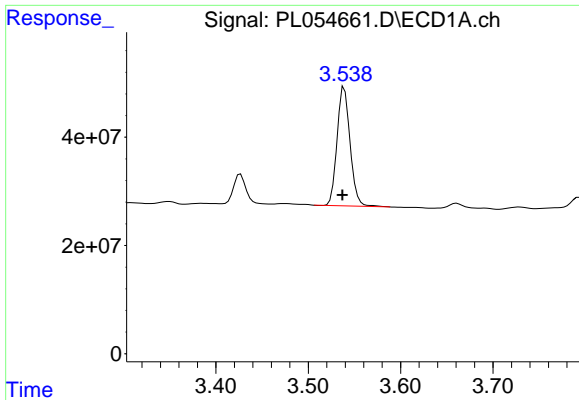
Data Path : Z:\pestpcbsrv\HPCHEM1\ECD_L\Data\PL112619\
 Data File : PL054661.D
 Signal(s) : Signal #1: ECD1A.ch Signal #2: ECD2B.ch
 Acq On : 26 Nov 2019 22:59
 Operator : SG\AJ
 Sample : K5663-04MSD
 Misc :
 ALS Vial : 35 Sample Multiplier: 1

Instrument :
 ECD_L
 Client Sampled :
 AU-06-112219MSD

Integration File signal 1: autoint1.e
 Integration File signal 2: autoint2.e
 Quant Time: Nov 27 02:49:46 2019
 Quant Method : Z:\pestpcbsrv\HPCHEM1\ECD_L\methods\PL112619.M
 Quant Title : GC Extractables
 QLast Update : Wed Nov 27 01:19:55 2019
 Response via : Initial Calibration
 Integrator: ChemStation

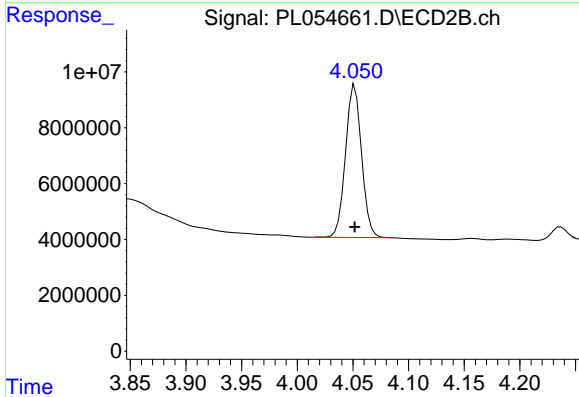
Volume Inj. : 1 µl
 Signal #1 Phase : ZB-MR2 Signal #2 Phase: ZB-MR1
 Signal #1 Info : 30M x 0.32mm x0.2 Signal #2 Info : 30M x 0.32mm x0.5µm



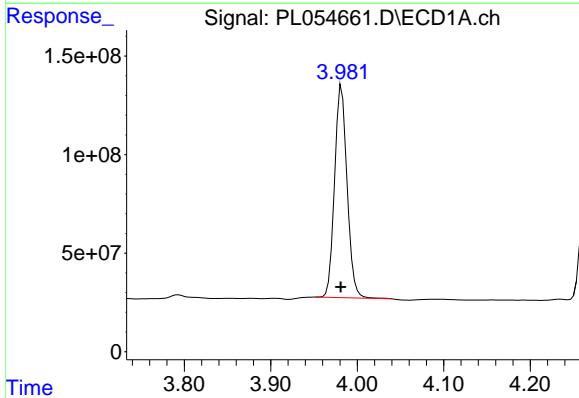


#1 Tetrachloro-m-xylene
 R.T.: 3.539 min
 Delta R.T.: 0.002 min
 Response: 214897260
 Conc: 18.47 ng/ml

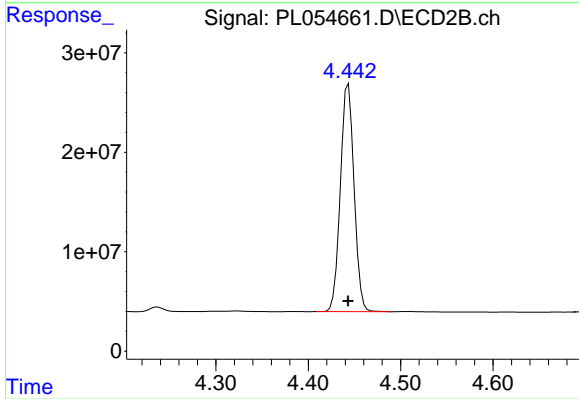
Instrument :
 ECD_L
 ClientSampleId :
 AU-06-112219MSD



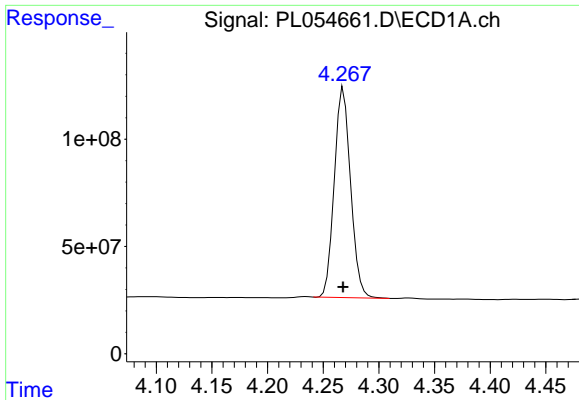
#1 Tetrachloro-m-xylene
 R.T.: 4.052 min
 Delta R.T.: 0.000 min
 Response: 54759280
 Conc: 21.46 ng/ml



#2 alpha-BHC
 R.T.: 3.982 min
 Delta R.T.: 0.001 min
 Response: 1076812065
 Conc: 56.72 ng/ml



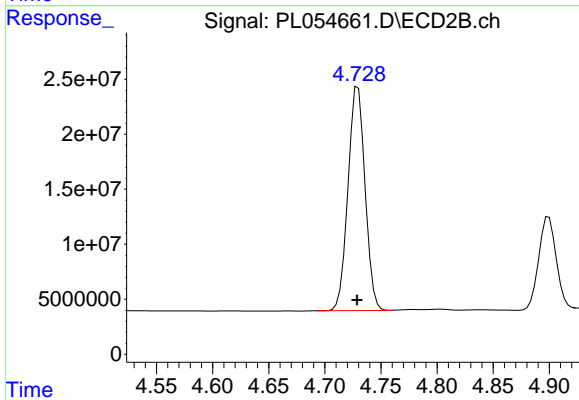
#2 alpha-BHC
 R.T.: 4.443 min
 Delta R.T.: 0.000 min
 Response: 235594043
 Conc: 66.50 ng/ml



#3 gamma-BHC (Lindane)

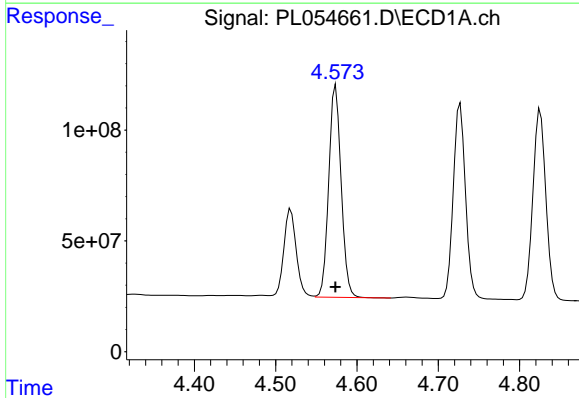
R.T.: 4.268 min
 Delta R.T.: 0.000 min
 Response: 996635995
 Conc: 58.47 ng/ml

Instrument :
 ECD_L
 ClientSampleId :
 AU-06-112219MSD



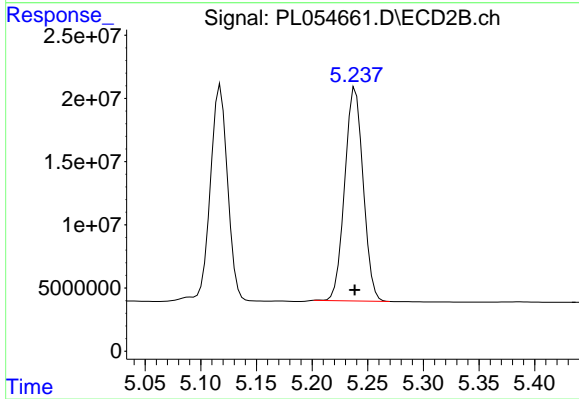
#3 gamma-BHC (Lindane)

R.T.: 4.730 min
 Delta R.T.: 0.000 min
 Response: 215273177
 Conc: 66.02 ng/ml



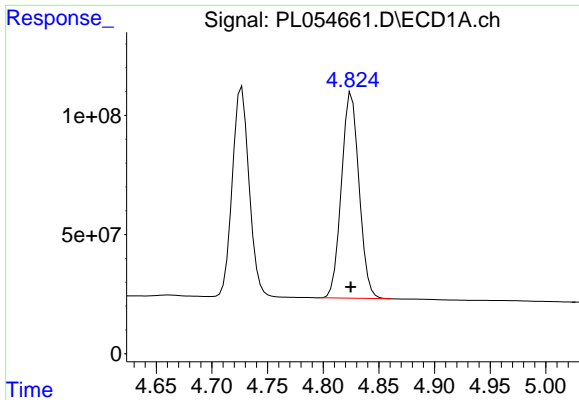
#4 Heptachlor

R.T.: 4.574 min
 Delta R.T.: 0.000 min
 Response: 1018535662
 Conc: 57.76 ng/ml



#4 Heptachlor

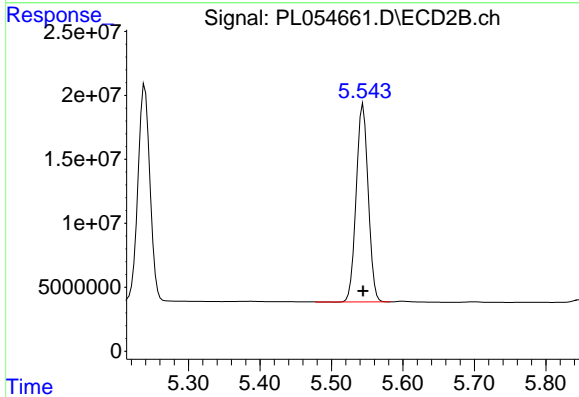
R.T.: 5.239 min
 Delta R.T.: 0.000 min
 Response: 194403948
 Conc: 64.42 ng/ml



#5 Aldrin

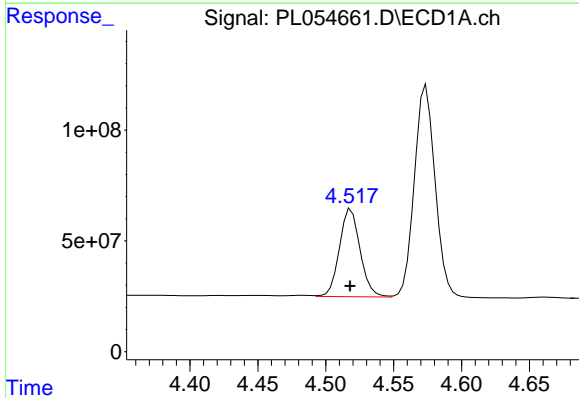
R.T.: 4.826 min
 Delta R.T.: 0.000 min
 Response: 949836417
 Conc: 58.27 ng/ml

Instrument :
 ECD_L
 ClientSampleId :
 AU-06-112219MSD



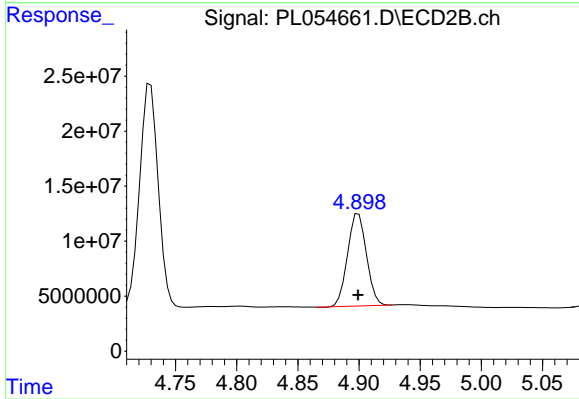
#5 Aldrin

R.T.: 5.544 min
 Delta R.T.: 0.000 min
 Response: 179841167
 Conc: 64.54 ng/ml



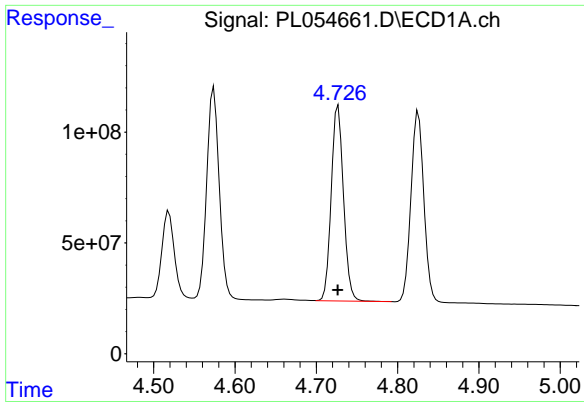
#6 beta-BHC

R.T.: 4.519 min
 Delta R.T.: 0.000 min
 Response: 420801913
 Conc: 56.74 ng/ml



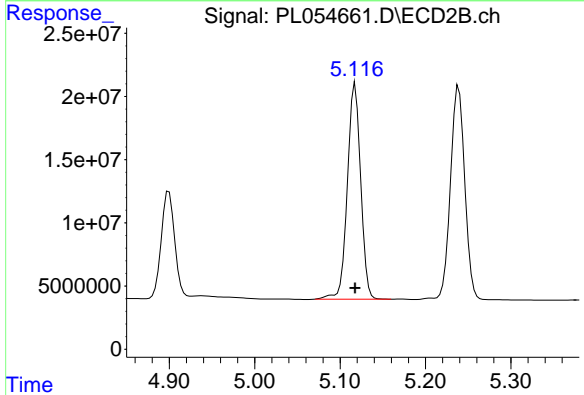
#6 beta-BHC

R.T.: 4.900 min
 Delta R.T.: 0.000 min
 Response: 89923349
 Conc: 63.86 ng/ml

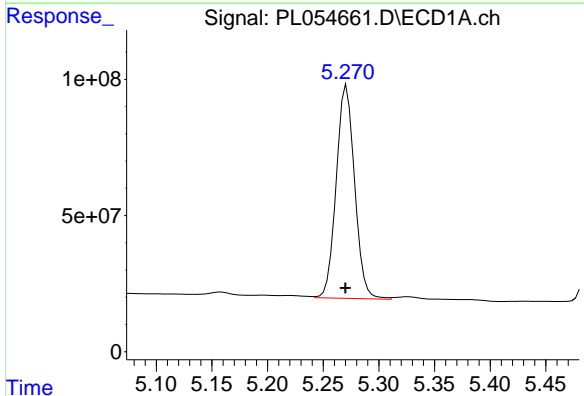


#7 delta-BHC
 R.T.: 4.727 min
 Delta R.T.: 0.000 min
 Response: 923750386
 Conc: 56.83 ng/ml

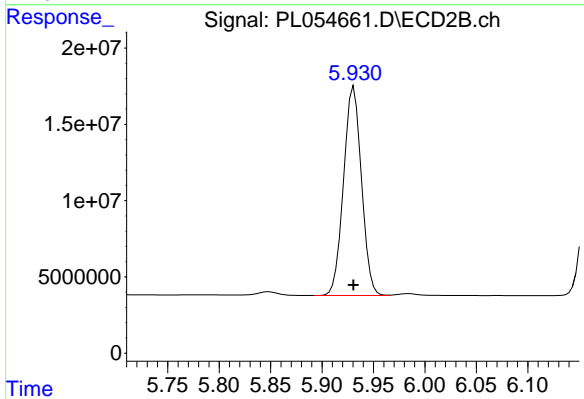
Instrument :
 ECD_L
ClientSampleId :
 AU-06-112219MSD



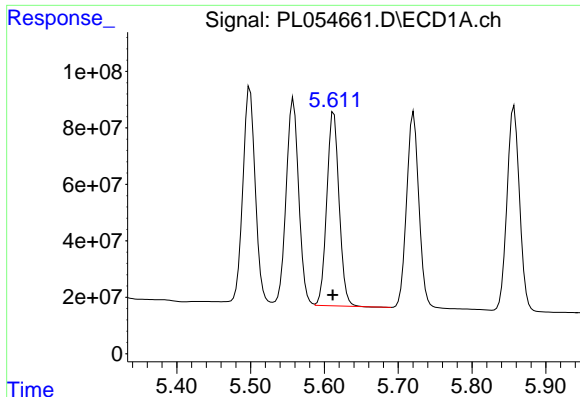
#7 delta-BHC
 R.T.: 5.118 min
 Delta R.T.: 0.000 min
 Response: 185113252
 Conc: 69.43 ng/ml



#8 Heptachlor epoxide
 R.T.: 5.271 min
 Delta R.T.: 0.001 min
 Response: 899987237
 Conc: 59.50 ng/ml



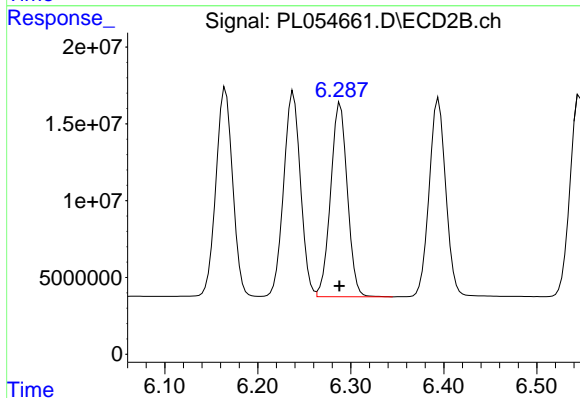
#8 Heptachlor epoxide
 R.T.: 5.931 min
 Delta R.T.: 0.000 min
 Response: 166103786
 Conc: 66.49 ng/ml



#9 Endosulfan I

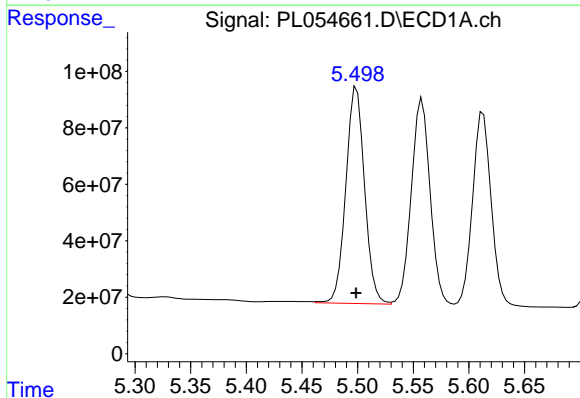
R.T.: 5.613 min
Delta R.T.: 0.001 min
Response: 795944916
Conc: 58.37 ng/ml

Instrument :
ECD_L
ClientSampleId :
AU-06-112219MSD



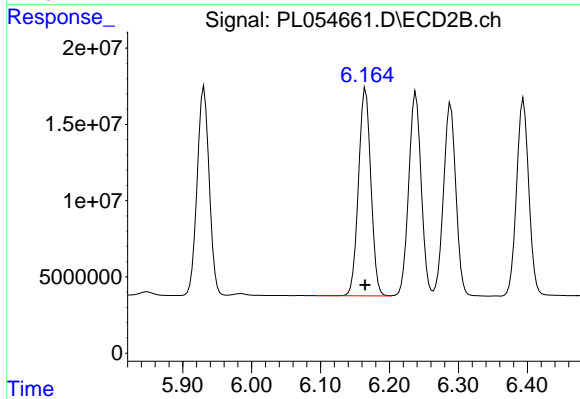
#9 Endosulfan I

R.T.: 6.289 min
Delta R.T.: 0.000 min
Response: 157540576
Conc: 63.69 ng/ml



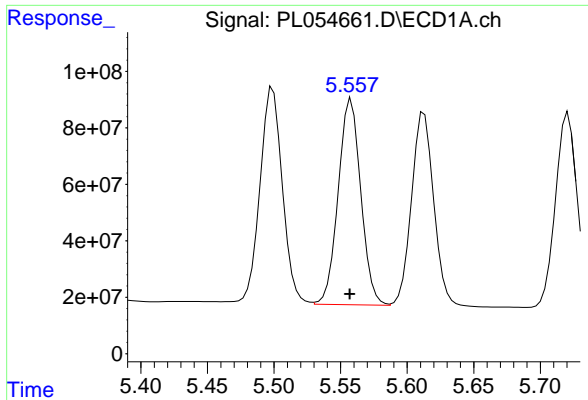
#10 gamma-Chlordane

R.T.: 5.499 min
Delta R.T.: 0.000 min
Response: 898330812
Conc: 59.24 ng/ml



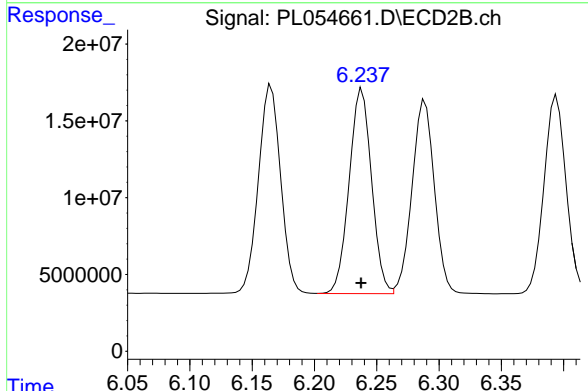
#10 gamma-Chlordane

R.T.: 6.165 min
Delta R.T.: 0.000 min
Response: 169566270
Conc: 64.37 ng/ml

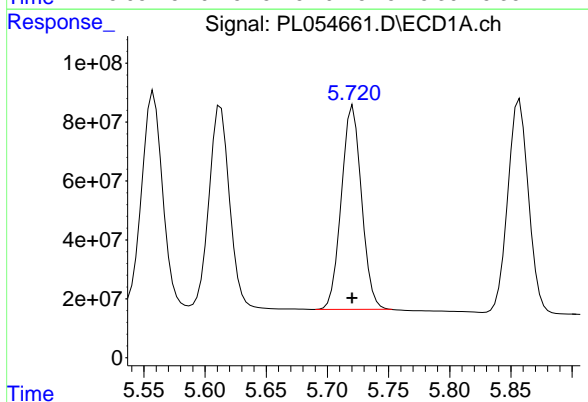


#11 alpha-Chlordane
 R.T.: 5.558 min
 Delta R.T.: 0.001 min
 Response: 862162607
 Conc: 58.47 ng/ml

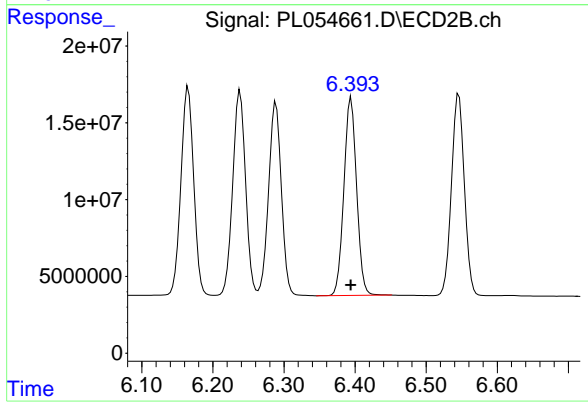
Instrument :
 ECD_L
 ClientSampleId :
 AU-06-112219MSD



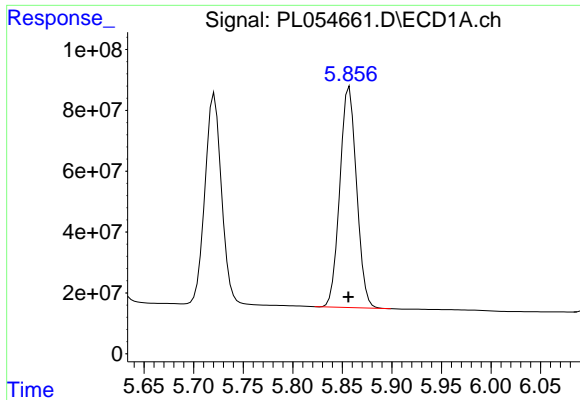
#11 alpha-Chlordane
 R.T.: 6.238 min
 Delta R.T.: 0.000 min
 Response: 167819582
 Conc: 63.92 ng/ml



#12 4,4'-DDE
 R.T.: 5.721 min
 Delta R.T.: 0.000 min
 Response: 789414093
 Conc: 59.33 ng/ml

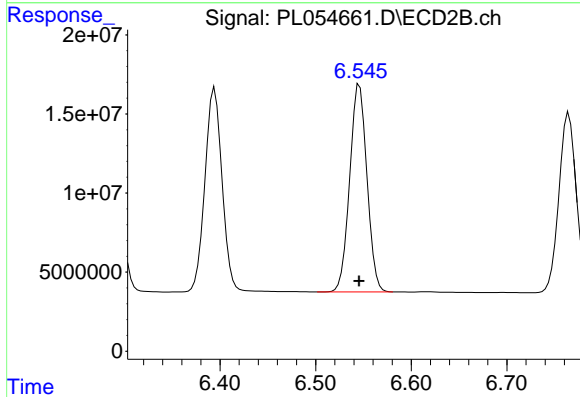


#12 4,4'-DDE
 R.T.: 6.394 min
 Delta R.T.: 0.000 min
 Response: 159774198
 Conc: 64.54 ng/ml

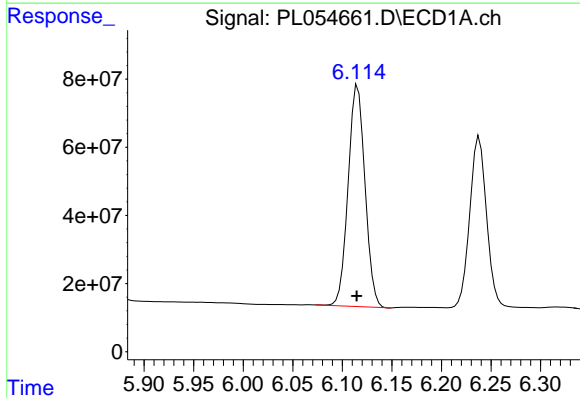


#13 Dieldrin
 R.T.: 5.857 min
 Delta R.T.: 0.001 min
 Response: 852962444
 Conc: 60.15 ng/ml

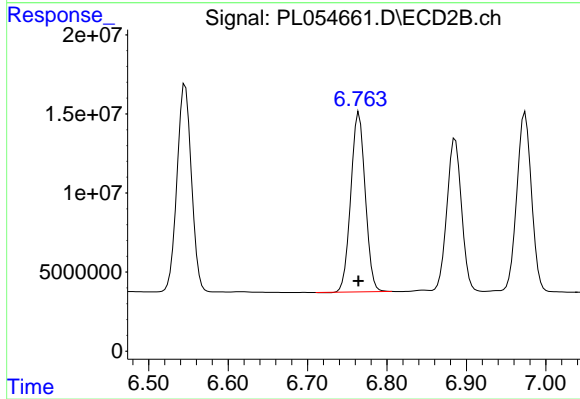
Instrument :
 ECD_L
 ClientSampleId :
 AU-06-112219MSD



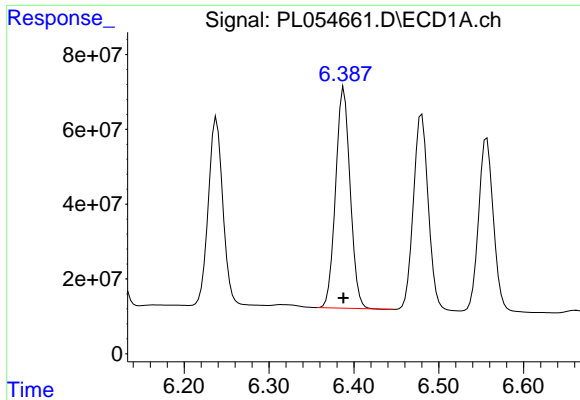
#13 Dieldrin
 R.T.: 6.546 min
 Delta R.T.: 0.000 min
 Response: 165169370
 Conc: 64.89 ng/ml



#14 Endrin
 R.T.: 6.116 min
 Delta R.T.: 0.000 min
 Response: 769107587
 Conc: 60.40 ng/ml



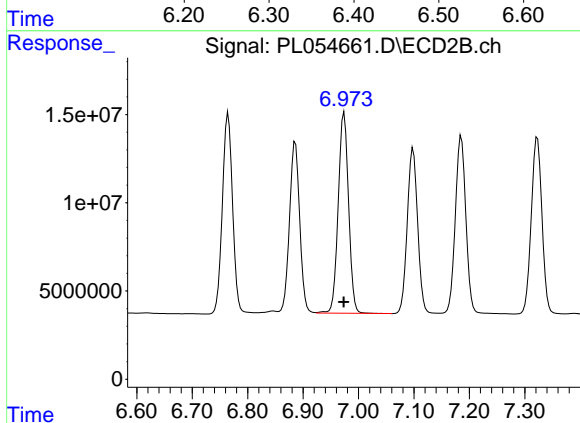
#14 Endrin
 R.T.: 6.765 min
 Delta R.T.: 0.000 min
 Response: 143371050
 Conc: 64.72 ng/ml



#15 Endosulfan II

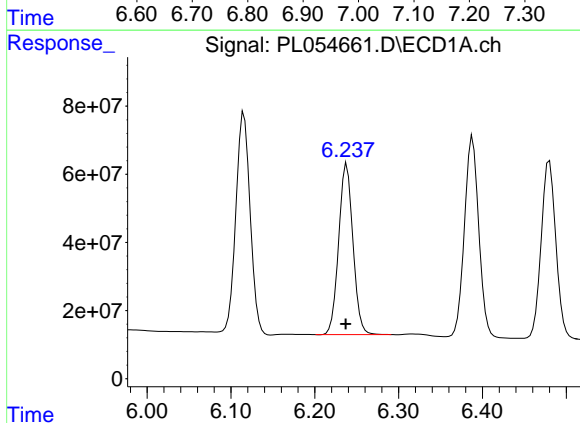
R.T.: 6.388 min
 Delta R.T.: 0.000 min
 Response: 702010618
 Conc: 58.02 ng/ml

Instrument :
 ECD_L
 ClientSampleId :
 AU-06-112219MSD



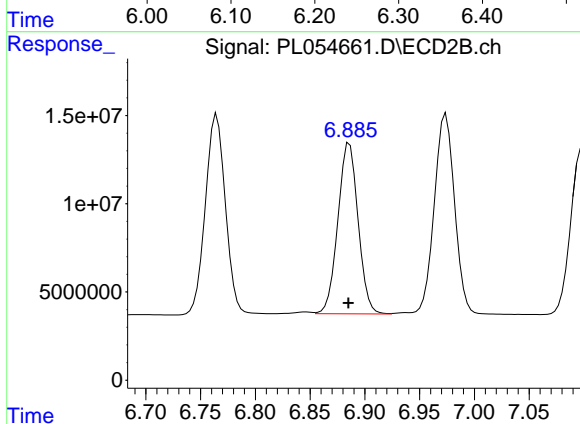
#15 Endosulfan II

R.T.: 6.974 min
 Delta R.T.: 0.000 min
 Response: 147516099
 Conc: 62.75 ng/ml



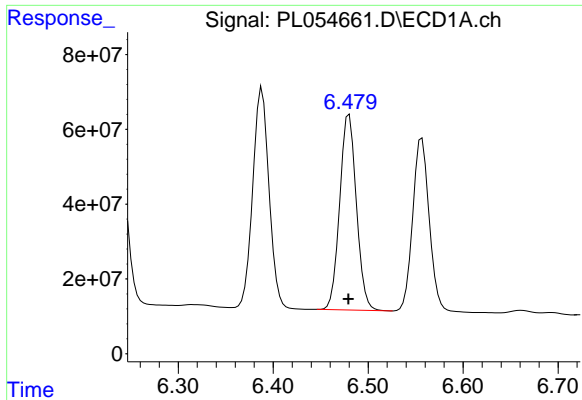
#16 4,4'-DDD

R.T.: 6.238 min
 Delta R.T.: 0.000 min
 Response: 593863026
 Conc: 60.80 ng/ml



#16 4,4'-DDD

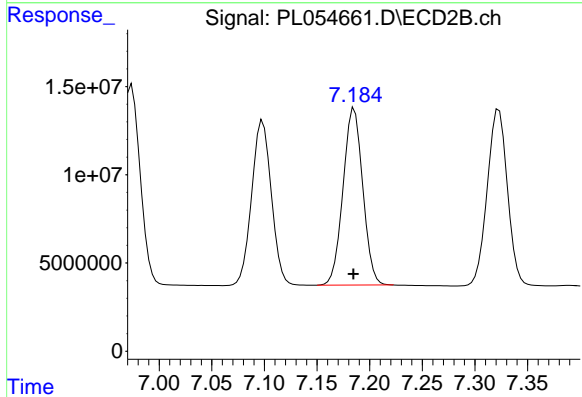
R.T.: 6.886 min
 Delta R.T.: 0.001 min
 Response: 124468804
 Conc: 64.83 ng/ml



#17 4,4'-DDT

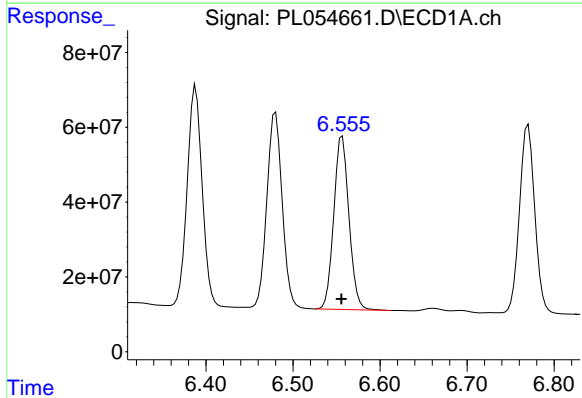
R.T.: 6.480 min
 Delta R.T.: 0.000 min
 Response: 640204408
 Conc: 61.11 ng/ml

Instrument :
 ECD_L
 ClientSampleId :
 AU-06-112219MSD



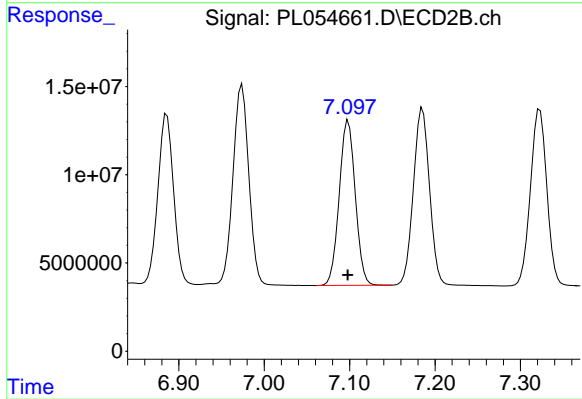
#17 4,4'-DDT

R.T.: 7.185 min
 Delta R.T.: 0.000 min
 Response: 131201633
 Conc: 66.22 ng/ml



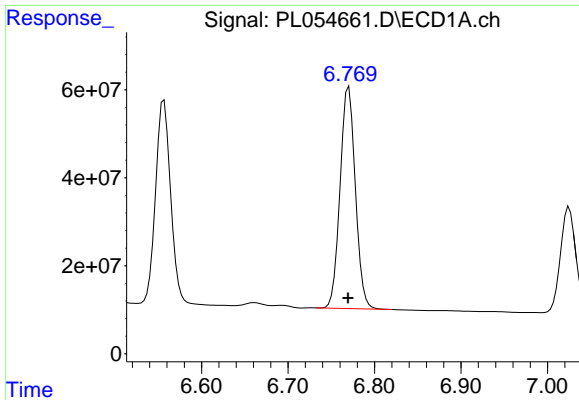
#18 Endrin aldehyde

R.T.: 6.557 min
 Delta R.T.: 0.000 min
 Response: 561203614
 Conc: 56.67 ng/ml



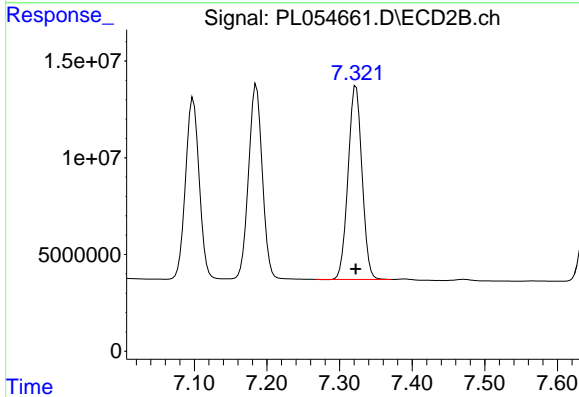
#18 Endrin aldehyde

R.T.: 7.098 min
 Delta R.T.: 0.000 min
 Response: 122194949
 Conc: 62.34 ng/ml

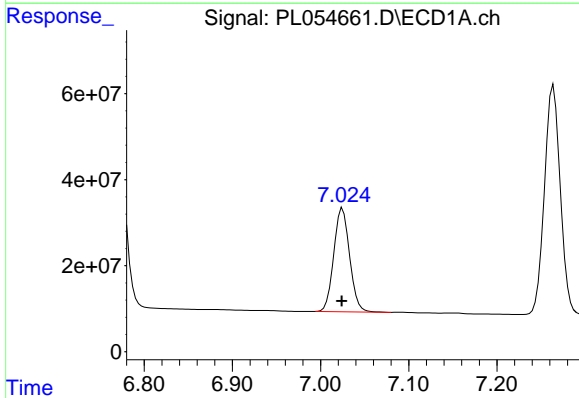


#19 Endosulfan Sulfate
 R.T.: 6.770 min
 Delta R.T.: 0.000 min
 Response: 614192762
 Conc: 57.35 ng/ml

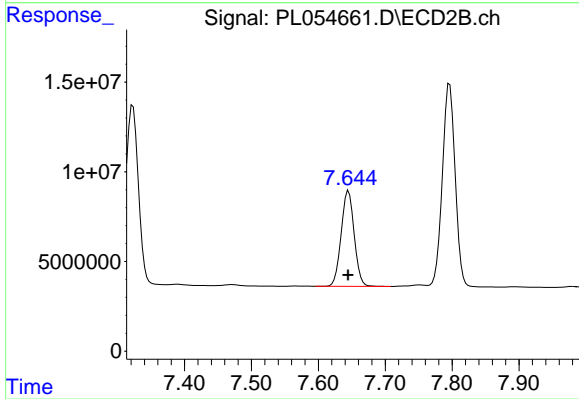
Instrument :
 ECD_L
ClientSampleId :
 AU-06-112219MSD



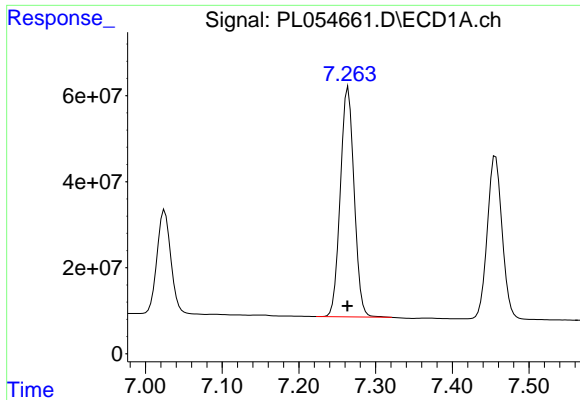
#19 Endosulfan Sulfate
 R.T.: 7.323 min
 Delta R.T.: 0.000 min
 Response: 133838604
 Conc: 63.12 ng/ml



#20 Methoxychlor
 R.T.: 7.025 min
 Delta R.T.: 0.000 min
 Response: 301486327
 Conc: 60.16 ng/ml



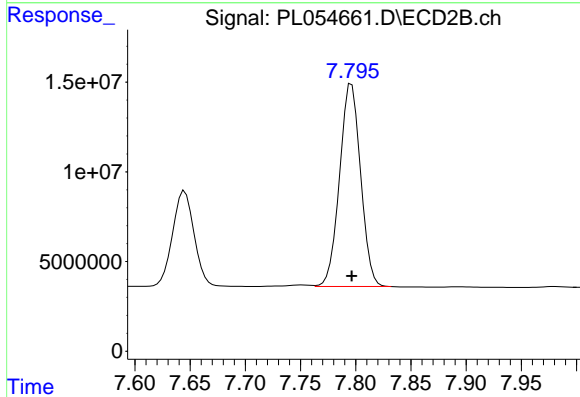
#20 Methoxychlor
 R.T.: 7.645 min
 Delta R.T.: 0.000 min
 Response: 72240102
 Conc: 63.33 ng/ml



#21 Endrin ketone

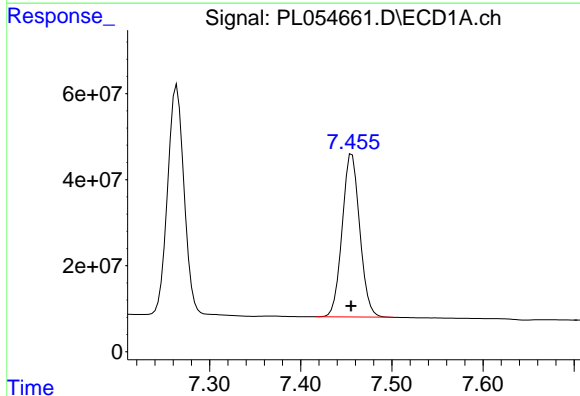
R.T.: 7.264 min
Delta R.T.: 0.001 min
Response: 669017435
Conc: 61.55 ng/ml

Instrument :
ECD_L
ClientSampleId :
AU-06-112219MSD



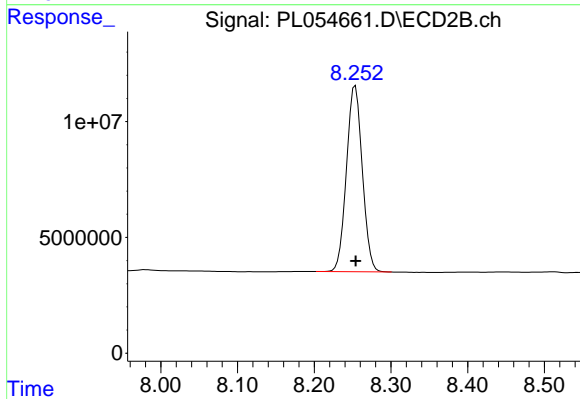
#21 Endrin ketone

R.T.: 7.796 min
Delta R.T.: 0.000 min
Response: 149940343
Conc: 66.61 ng/ml



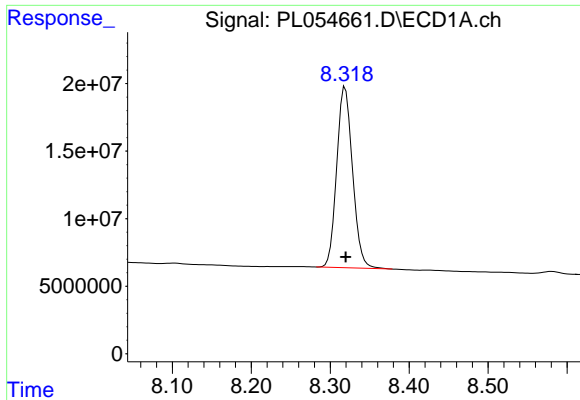
#22 Mirex

R.T.: 7.456 min
Delta R.T.: 0.000 min
Response: 507624966
Conc: 62.53 ng/ml



#22 Mirex

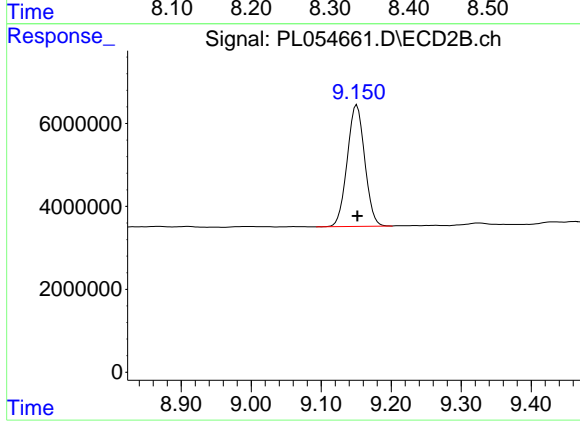
R.T.: 8.253 min
Delta R.T.: 0.000 min
Response: 116060227
Conc: 67.15 ng/ml



#28 Decachlorobiphenyl

R.T.: 8.319 min
Delta R.T.: 0.000 min
Response: 186533762
Conc: 19.48 ng/ml

Instrument :
ECD_L
ClientSampleId :
AU-06-112219MSD



#28 Decachlorobiphenyl

R.T.: 9.151 min
Delta R.T.: 0.000 min
Response: 50850411
Conc: 21.21 ng/ml