

Data Path : Z:\pestpcbsrv\HPCHEM1\ECD\_L\Data\PL112619\  
 Data File : PL054671.D  
 Signal(s) : Signal #1: ECD1A.ch Signal #2: ECD2B.ch  
 Acq On : 27 Nov 2019 01:20  
 Operator : SG\AJ  
 Sample : I.BLK  
 Misc :  
 ALS Vial : 2 Sample Multiplier: 1

Instrument :  
 ECD\_L  
 ClientSampleId :  
 I.BLK

Integration File signal 1: autoint1.e  
 Integration File signal 2: autoint2.e  
 Quant Time: Nov 27 02:51:44 2019  
 Quant Method : Z:\pestpcbsrv\HPCHEM1\ECD\_L\methods\PL112619.M  
 Quant Title : GC Extractables  
 QLast Update : Wed Nov 27 01:19:55 2019  
 Response via : Initial Calibration  
 Integrator: ChemStation

Volume Inj. : 1 µl  
 Signal #1 Phase : ZB-MR2 Signal #2 Phase: ZB-MR1  
 Signal #1 Info : 30M x 0.32mm x0.2 Signal #2 Info : 30M x 0.32mm x0.5µm

Compound	RT#1	RT#2	Resp#1	Resp#2	ng/ml	ng/ml
-----						
System Monitoring Compounds						
1) SA Tetrachlo...	3.539	4.051	255.9E6	60416605	21.993	23.676
28) SA Decachlor...	8.319	9.150	207.8E6	56427697	21.696	23.537

Target Compounds

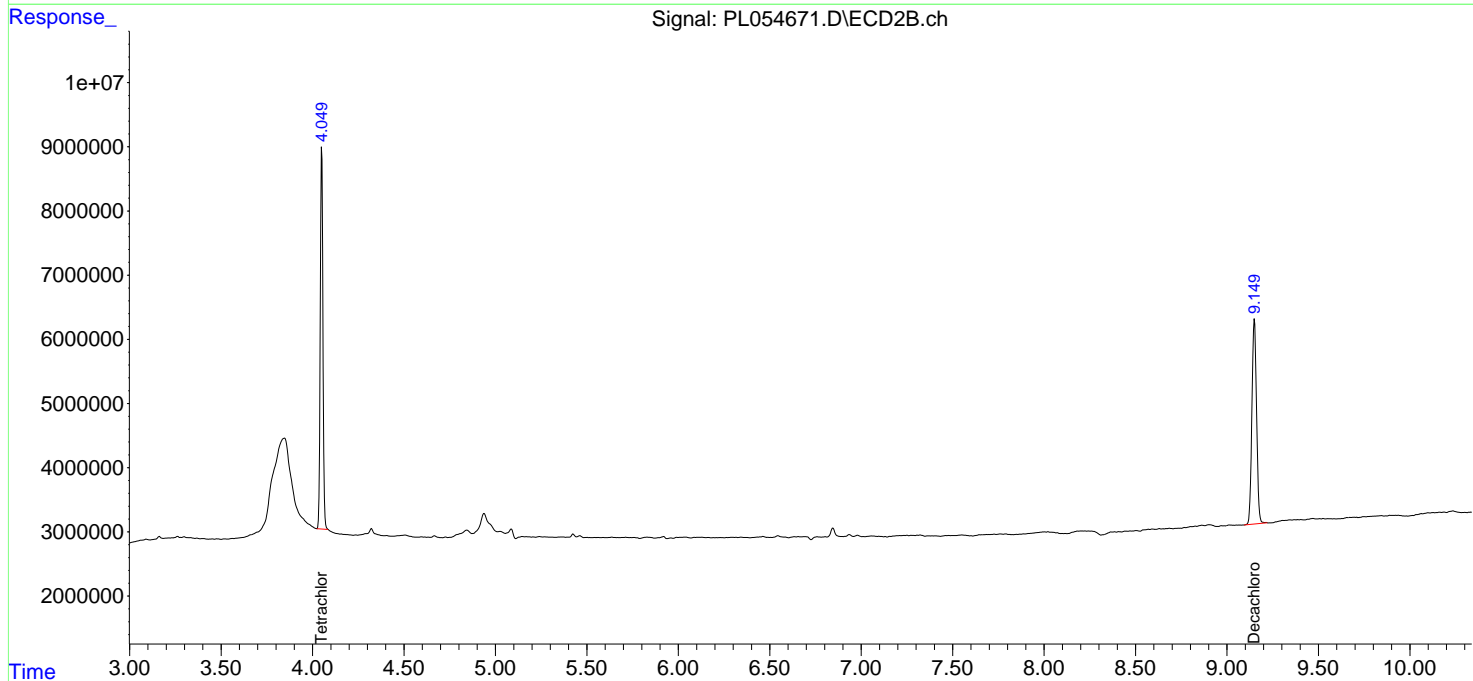
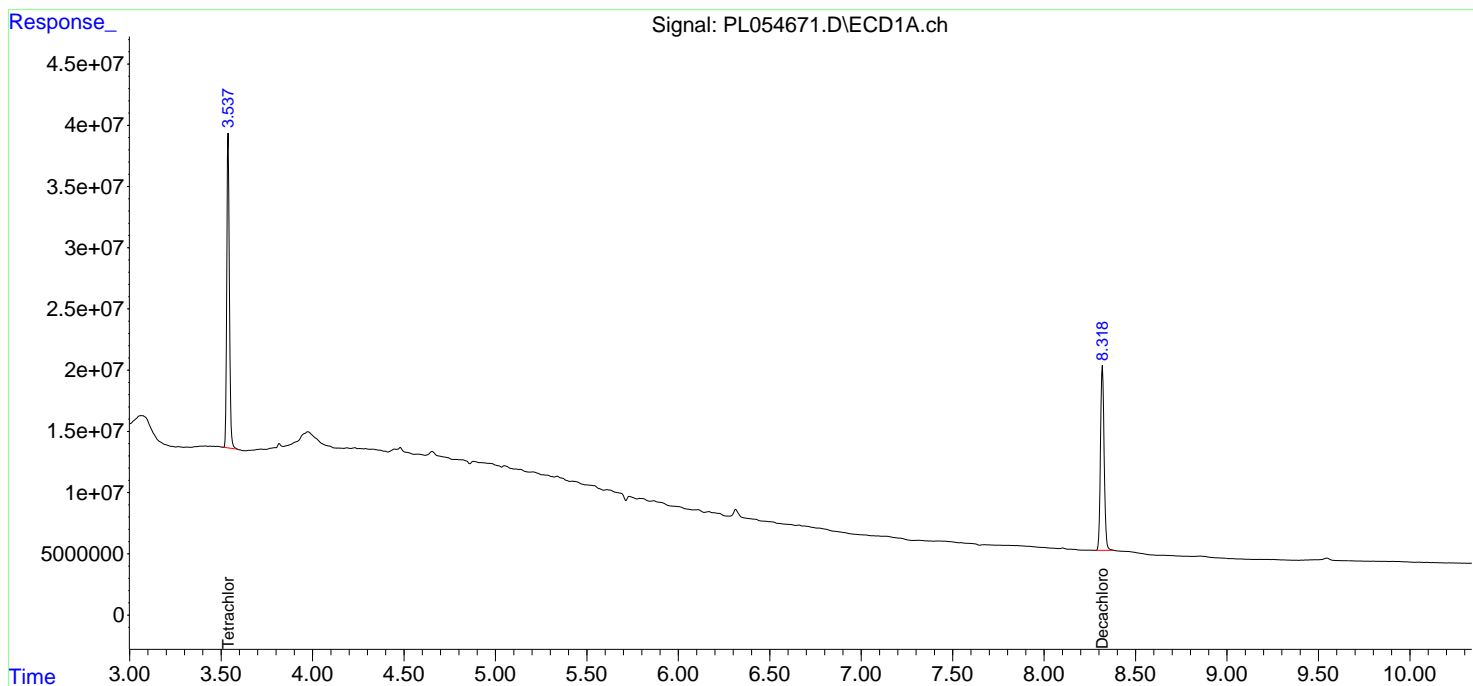
(f)=RT Delta > 1/2 Window (#)=Amounts differ by > 25% (m)=manual int.

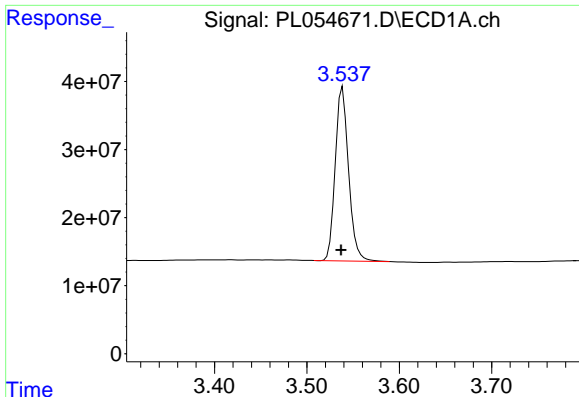
Data Path : Z:\pestpcbsrv\HPCHEM1\ECD\_L\Data\PL112619\  
 Data File : PL054671.D  
 Signal(s) : Signal #1: ECD1A.ch Signal #2: ECD2B.ch  
 Acq On : 27 Nov 2019 01:20  
 Operator : SG\AJ  
 Sample : I.BLK  
 Misc :  
 ALS Vial : 2 Sample Multiplier: 1

Instrument :  
 ECD\_L  
 ClientSampled :  
 I.BLK

Integration File signal 1: autoint1.e  
 Integration File signal 2: autoint2.e  
 Quant Time: Nov 27 02:51:44 2019  
 Quant Method : Z:\pestpcbsrv\HPCHEM1\ECD\_L\methods\PL112619.M  
 Quant Title : GC Extractables  
 QLast Update : Wed Nov 27 01:19:55 2019  
 Response via : Initial Calibration  
 Integrator: ChemStation

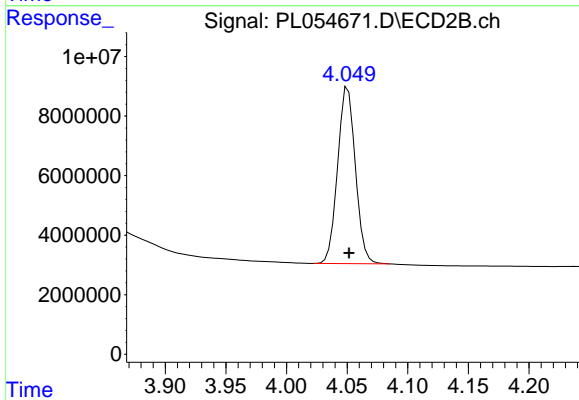
Volume Inj. : 1 µl  
 Signal #1 Phase : ZB-MR2 Signal #2 Phase: ZB-MR1  
 Signal #1 Info : 30M x 0.32mm x0.2 Signal #2 Info : 30M x 0.32mm x0.5µm



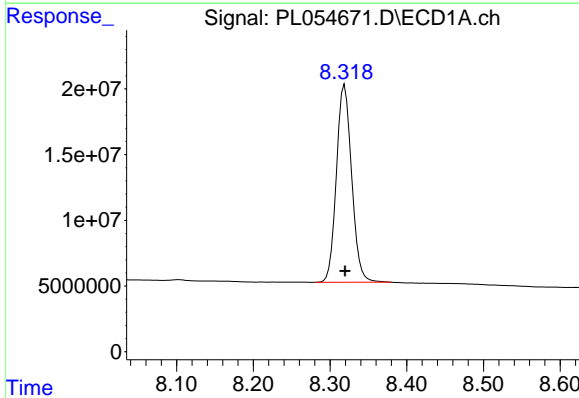


#1 Tetrachloro-m-xylene  
 R.T.: 3.539 min  
 Delta R.T.: 0.002 min  
 Response: 255873581  
 Conc: 21.99 ng/ml

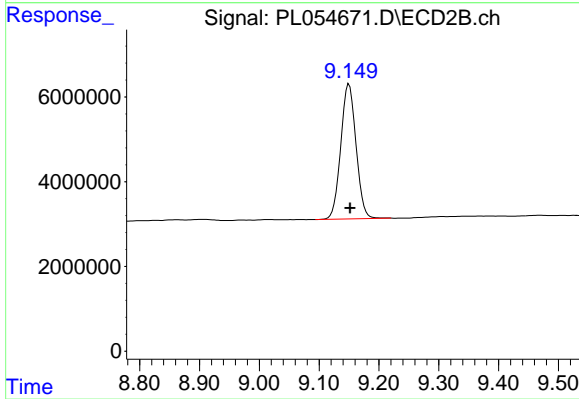
Instrument :  
 ECD\_L  
 ClientSampleId :  
 I.BLK



#1 Tetrachloro-m-xylene  
 R.T.: 4.051 min  
 Delta R.T.: 0.000 min  
 Response: 60416605  
 Conc: 23.68 ng/ml



#28 Decachlorobiphenyl  
 R.T.: 8.319 min  
 Delta R.T.: 0.000 min  
 Response: 207766580  
 Conc: 21.70 ng/ml



#28 Decachlorobiphenyl  
 R.T.: 9.150 min  
 Delta R.T.: -0.002 min  
 Response: 56427697  
 Conc: 23.54 ng/ml