

Data Path : Z:\pestpcbsrv\HPCHEM1\ECD_L\Data\PL112619\
 Data File : PL054673.D
 Signal(s) : Signal #1: ECD1A.ch Signal #2: ECD2B.ch
 Acq On : 27 Nov 2019 02:02
 Operator : SG\AJ
 Sample : K6025-02
 Misc :
 ALS Vial : 45 Sample Multiplier: 1

Instrument :
 ECD_L
ClientSampleId :
 GROUNDWATER

Manual Integrations
APPROVED
 Ankita
 11/27/2019 11:43:27 AM

Integration File signal 1: autoint1.e
 Integration File signal 2: autoint2.e
 Quant Time: Nov 27 02:52:09 2019
 Quant Method : Z:\pestpcbsrv\HPCHEM1\ECD_L\methods\PL112619.M
 Quant Title : GC Extractables
 QLast Update : Wed Nov 27 01:19:55 2019
 Response via : Initial Calibration
 Integrator: ChemStation

Volume Inj. : 1 µl
 Signal #1 Phase : ZB-MR2 Signal #2 Phase: ZB-MR1
 Signal #1 Info : 30M x 0.32mm x0.2 Signal #2 Info : 30M x 0.32mm x0.5µm

Compound	RT#1	RT#2	Resp#1	Resp#2	ng/ml	ng/ml

System Monitoring Compounds						
1) SA Tetrachlo...	3.539	4.051	187.8E6	52662848	16.139m	20.637 #
28) SA Decachlor...	8.319	9.149	127.2E6	34613864	13.281	14.438

Target Compounds

(f)=RT Delta > 1/2 Window (#)=Amounts differ by > 25% (m)=manual int.

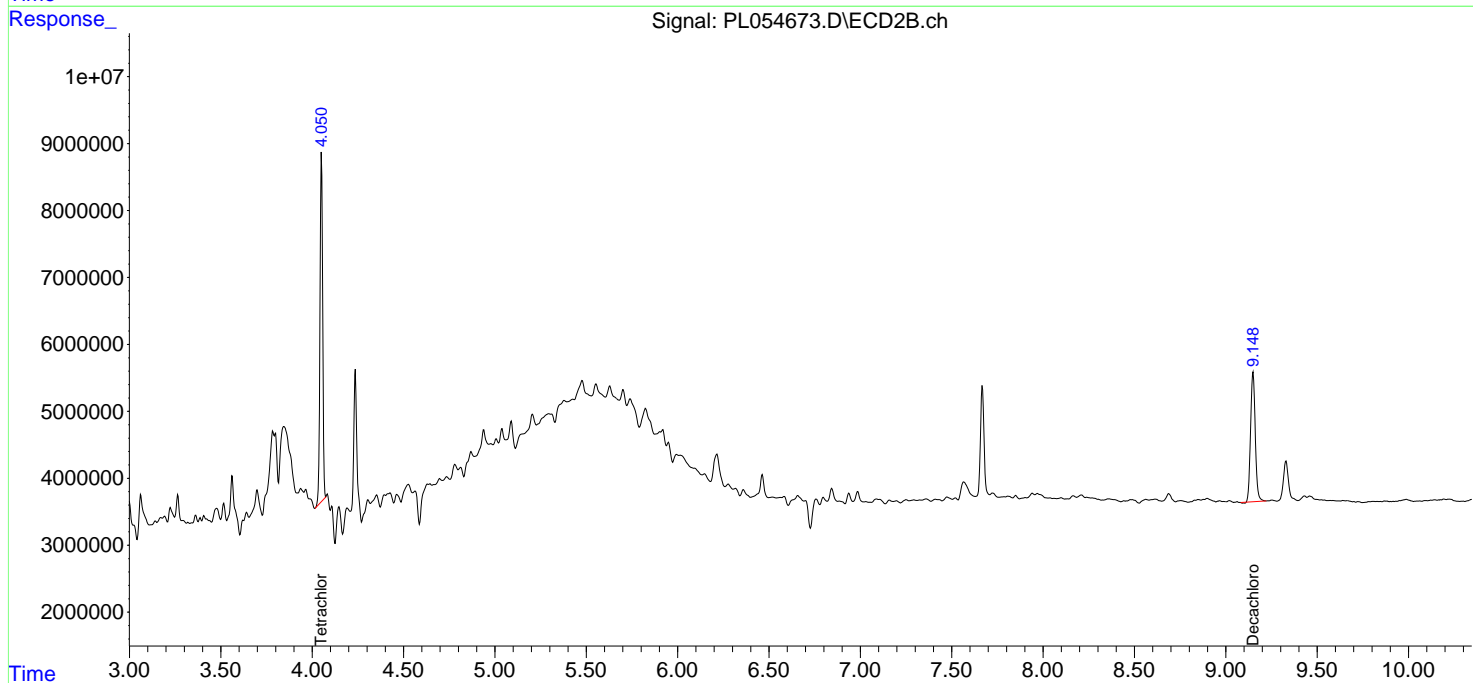
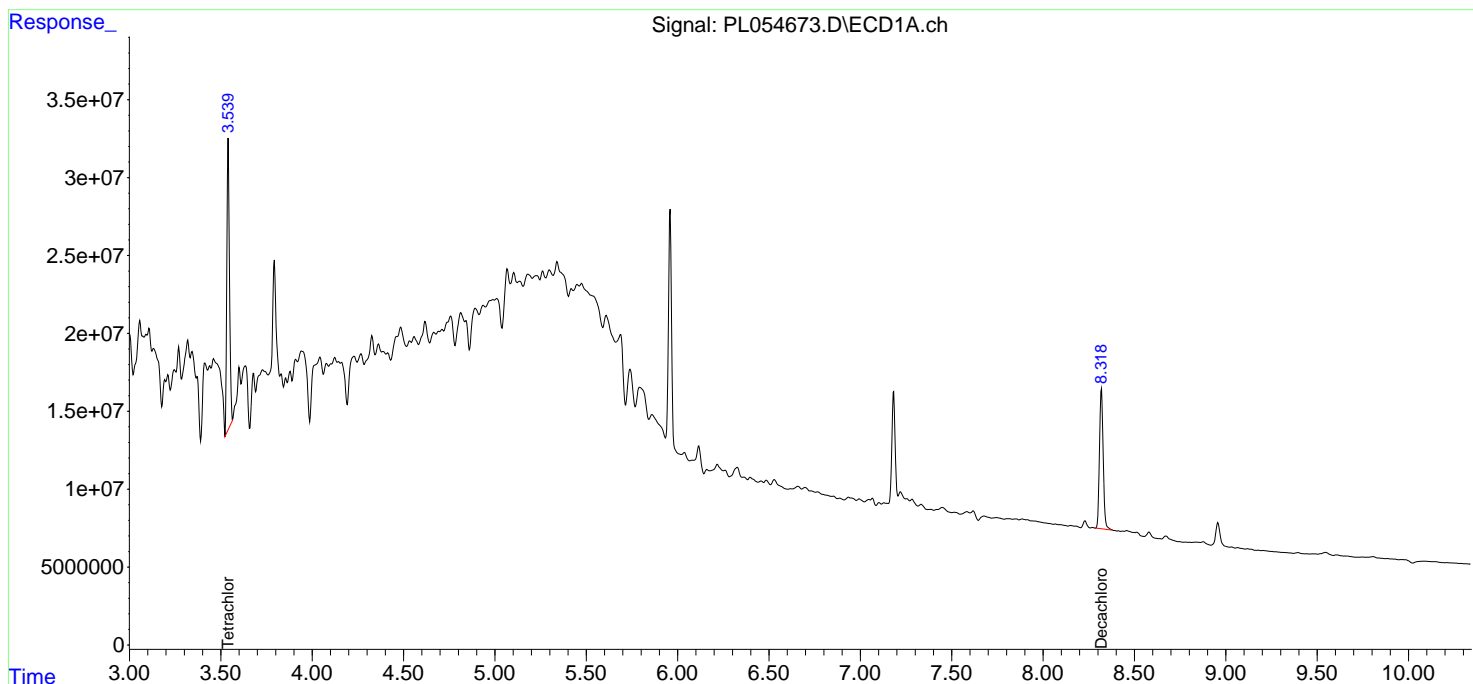
Data Path : Z:\pestpcbsrv\HPCHEM1\ECD_L\Data\PL112619\
 Data File : PL054673.D
 Signal(s) : Signal #1: ECD1A.ch Signal #2: ECD2B.ch
 Acq On : 27 Nov 2019 02:02
 Operator : SG\AJ
 Sample : K6025-02
 Misc :
 ALS Vial : 45 Sample Multiplier: 1

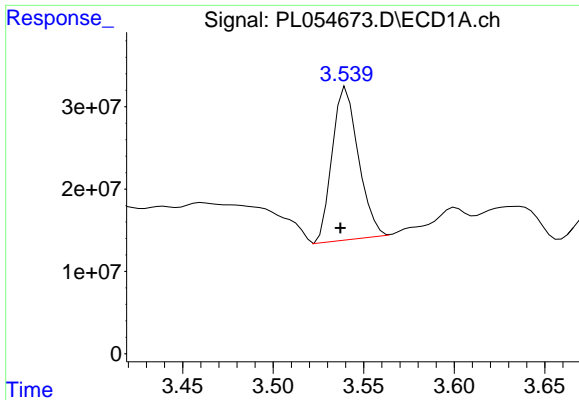
Instrument :
 ECD_L
ClientSampled :
 GROUNDWATER

Manual Integrations
APPROVED
 Ankita
 11/27/2019 11:43:27 AM

Integration File signal 1: autoint1.e
 Integration File signal 2: autoint2.e
 Quant Time: Nov 27 02:52:09 2019
 Quant Method : Z:\pestpcbsrv\HPCHEM1\ECD_L\methods\PL112619.M
 Quant Title : GC Extractables
 QLast Update : Wed Nov 27 01:19:55 2019
 Response via : Initial Calibration
 Integrator: ChemStation

Volume Inj. : 1 µl
 Signal #1 Phase : ZB-MR2 Signal #2 Phase: ZB-MR1
 Signal #1 Info : 30M x 0.32mm x0.2 Signal #2 Info : 30M x 0.32mm x0.5µm

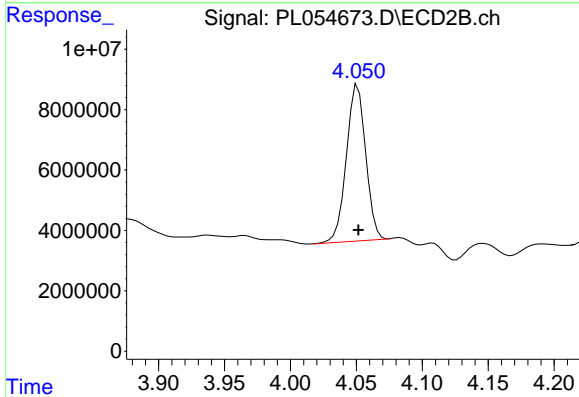




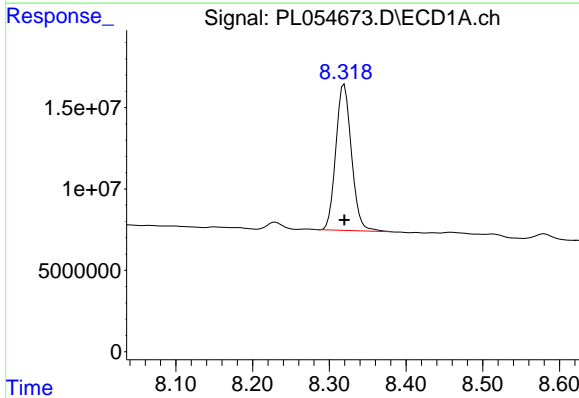
#1 Tetrachloro-m-xylene
 R.T.: 3.539 min
 Delta R.T.: 0.002 min
 Response: 187769404
 Conc: 16.14 ng/ml m

Instrument :
 ECD_L
ClientSampled :
 GROUNDWATER

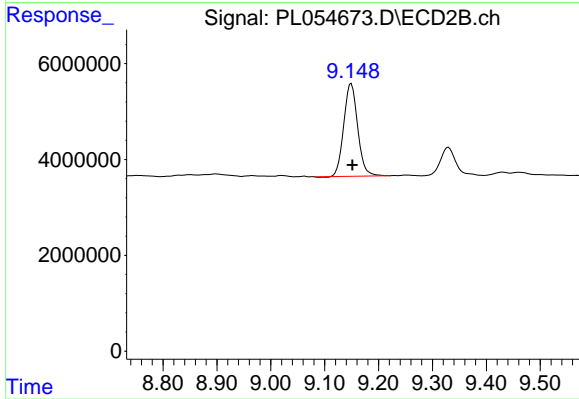
Manual Integrations
APPROVED
 Ankita
 11/27/2019 11:43:27 AM



#1 Tetrachloro-m-xylene
 R.T.: 4.051 min
 Delta R.T.: 0.000 min
 Response: 52662848
 Conc: 20.64 ng/ml



#28 Decachlorobiphenyl
 R.T.: 8.319 min
 Delta R.T.: 0.000 min
 Response: 127182669
 Conc: 13.28 ng/ml



#28 Decachlorobiphenyl
 R.T.: 9.149 min
 Delta R.T.: -0.002 min
 Response: 34613864
 Conc: 14.44 ng/ml