

Data Path : Z:\pestpcbsrv\HPCHEM1\ECD_L\Data\PL112619\
 Data File : PL054677.D
 Signal(s) : Signal #1: ECD1A.ch Signal #2: ECD2B.ch
 Acq On : 27 Nov 2019 02:59
 Operator : SG\AJ
 Sample : I.BLK
 Misc :
 ALS Vial : 2 Sample Multiplier: 1

Instrument :
 ECD_L
 ClientSampleId :
 I.BLK

Integration File signal 1: autoint1.e
 Integration File signal 2: autoint2.e
 Quant Time: Nov 27 06:18:52 2019
 Quant Method : Z:\pestpcbsrv\HPCHEM1\ECD_L\methods\PL112619.M
 Quant Title : GC Extractables
 QLast Update : Wed Nov 27 01:19:55 2019
 Response via : Initial Calibration
 Integrator: ChemStation

Volume Inj. : 1 µl
 Signal #1 Phase : ZB-MR2 Signal #2 Phase: ZB-MR1
 Signal #1 Info : 30M x 0.32mm x0.2 Signal #2 Info : 30M x 0.32mm x0.5µm

Compound	RT#1	RT#2	Resp#1	Resp#2	ng/ml	ng/ml

System Monitoring Compounds						
1) SA Tetrachlo...	3.539	4.051	246.3E6	59705682	21.169	23.397
28) SA Decachlor...	8.320	9.150	208.1E6	56285843	21.727	23.478

Target Compounds

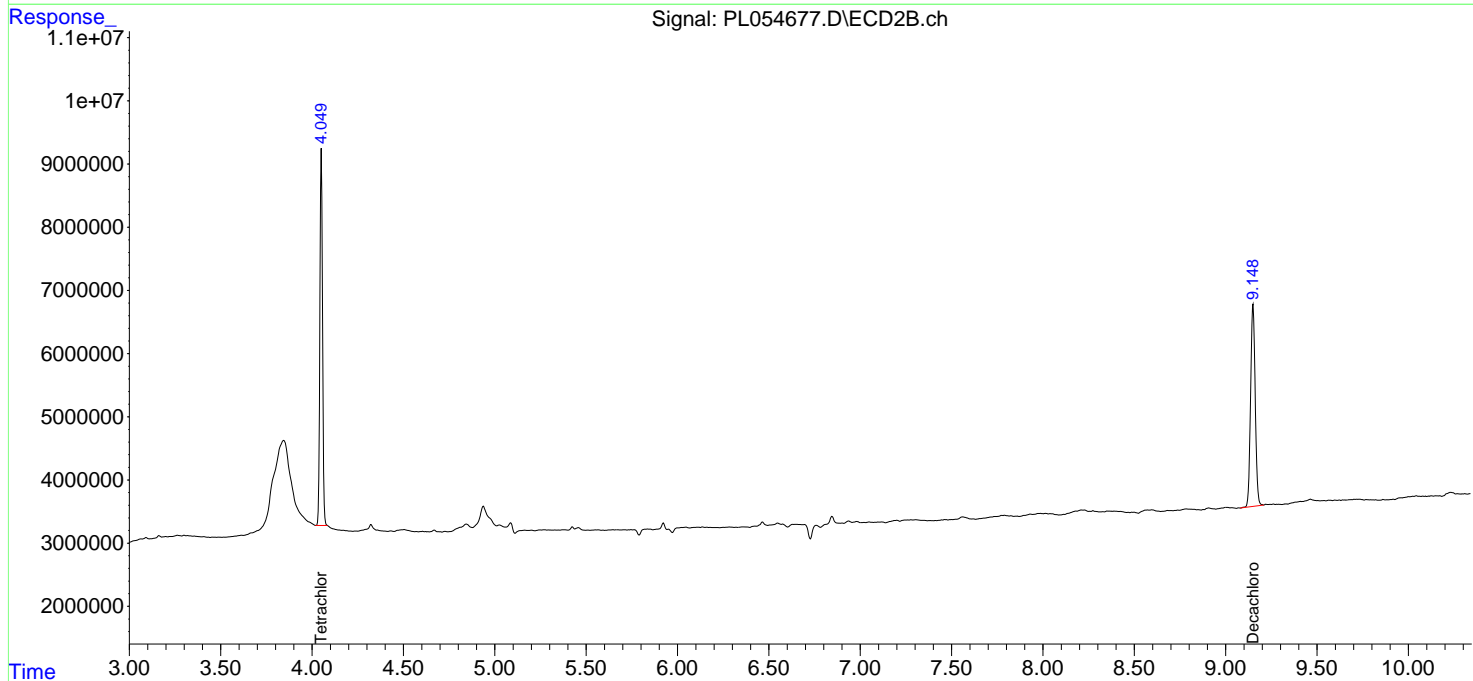
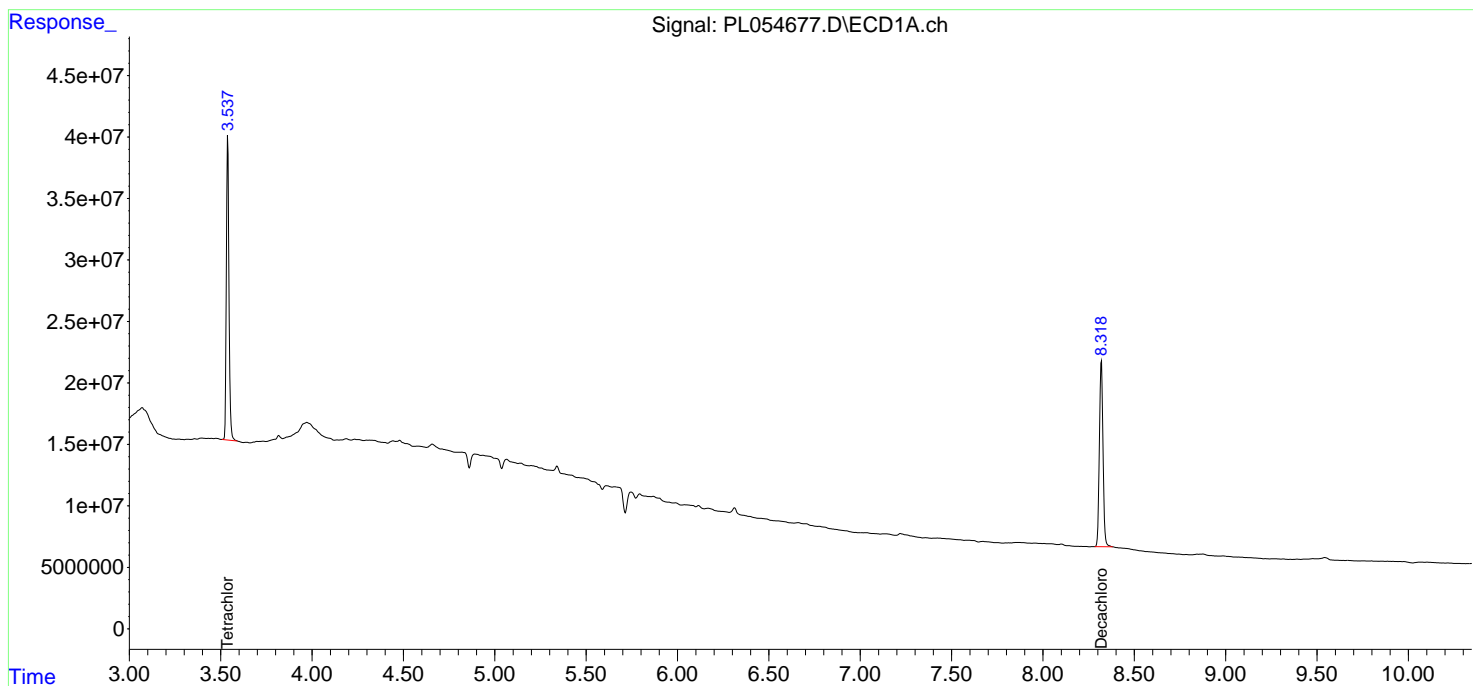
(f)=RT Delta > 1/2 Window (#)=Amounts differ by > 25% (m)=manual int.

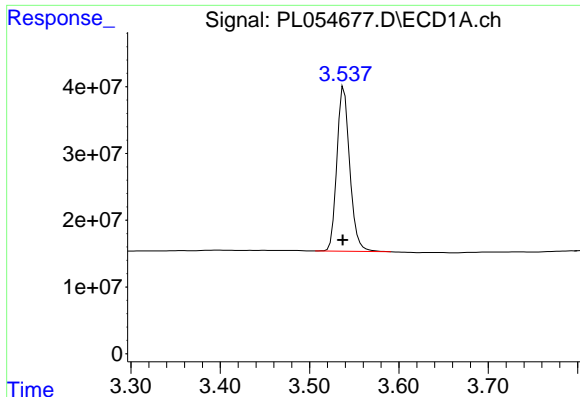
Data Path : Z:\pestpcbsrv\HPCHEM1\ECD_L\Data\PL112619\
 Data File : PL054677.D
 Signal(s) : Signal #1: ECD1A.ch Signal #2: ECD2B.ch
 Acq On : 27 Nov 2019 02:59
 Operator : SG\AJ
 Sample : I.BLK
 Misc :
 ALS Vial : 2 Sample Multiplier: 1

Instrument :
 ECD_L
 ClientSampled :
 I.BLK

Integration File signal 1: autoint1.e
 Integration File signal 2: autoint2.e
 Quant Time: Nov 27 06:18:52 2019
 Quant Method : Z:\pestpcbsrv\HPCHEM1\ECD_L\methods\PL112619.M
 Quant Title : GC Extractables
 QLast Update : Wed Nov 27 01:19:55 2019
 Response via : Initial Calibration
 Integrator: ChemStation

Volume Inj. : 1 µl
 Signal #1 Phase : ZB-MR2 Signal #2 Phase: ZB-MR1
 Signal #1 Info : 30M x 0.32mm x0.2 Signal #2 Info : 30M x 0.32mm x0.5µm

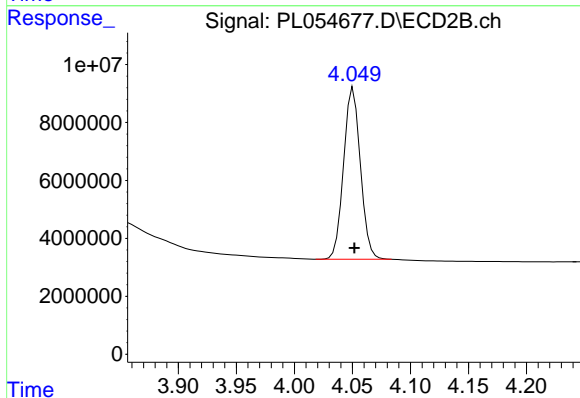




#1 Tetrachloro-m-xylene

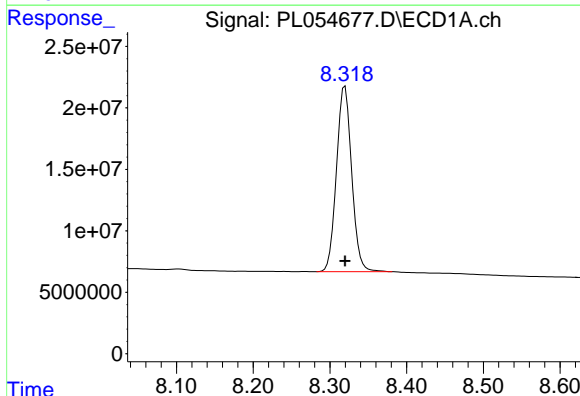
R.T.: 3.539 min
 Delta R.T.: 0.002 min
 Response: 246288006
 Conc: 21.17 ng/ml

Instrument :
 ECD_L
 ClientSampleId :
 I.BLK



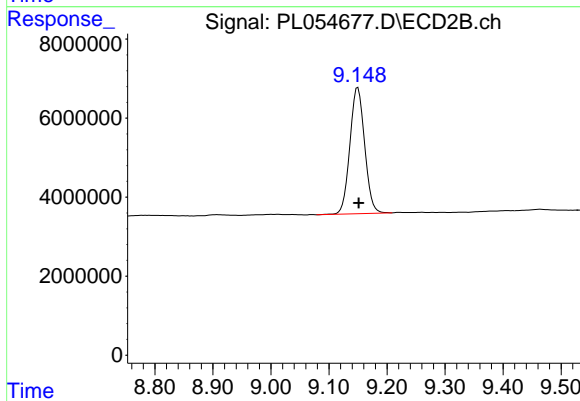
#1 Tetrachloro-m-xylene

R.T.: 4.051 min
 Delta R.T.: 0.000 min
 Response: 59705682
 Conc: 23.40 ng/ml



#28 Decachlorobiphenyl

R.T.: 8.320 min
 Delta R.T.: 0.000 min
 Response: 208064145
 Conc: 21.73 ng/ml



#28 Decachlorobiphenyl

R.T.: 9.150 min
 Delta R.T.: -0.002 min
 Response: 56285843
 Conc: 23.48 ng/ml