

Data Path : Z:\pestpcbsrv\HPCHEM1\ECD_L\Data\PL112619\
 Data File : PL054681.D
 Signal(s) : Signal #1: ECD1A.ch Signal #2: ECD2B.ch
 Acq On : 27 Nov 2019 04:09
 Operator : SG\AJ
 Sample : K5999-01 10X
 Misc :
 ALS Vial : 50 Sample Multiplier: 1

Instrument :
 ECD_L
ClientSampleId :
 IDLEWILD-BH-01A

Manual Integrations
APPROVED
 Ankita
 11/27/2019 11:43:32 AM

Integration File signal 1: autoint1.e
 Integration File signal 2: autoint2.e
 Quant Time: Nov 27 06:19:41 2019
 Quant Method : Z:\pestpcbsrv\HPCHEM1\ECD_L\methods\PL112619.M
 Quant Title : GC Extractables
 QLast Update : Wed Nov 27 01:19:55 2019
 Response via : Initial Calibration
 Integrator: ChemStation

Volume Inj. : 1 µl
 Signal #1 Phase : ZB-MR2 Signal #2 Phase: ZB-MR1
 Signal #1 Info : 30M x 0.32mm x0.2 Signal #2 Info : 30M x 0.32mm x0.5µm

Compound	RT#1	RT#2	Resp#1	Resp#2	ng/ml	ng/ml

System Monitoring Compounds						
1) SA Tetrachlo...	3.538	4.050	19132241	4520082	1.644	1.771
28) SA Decachlor...	8.319	9.148	14260718	3787090	1.489	1.580m

Target Compounds

(f)=RT Delta > 1/2 Window (#)=Amounts differ by > 25% (m)=manual int.

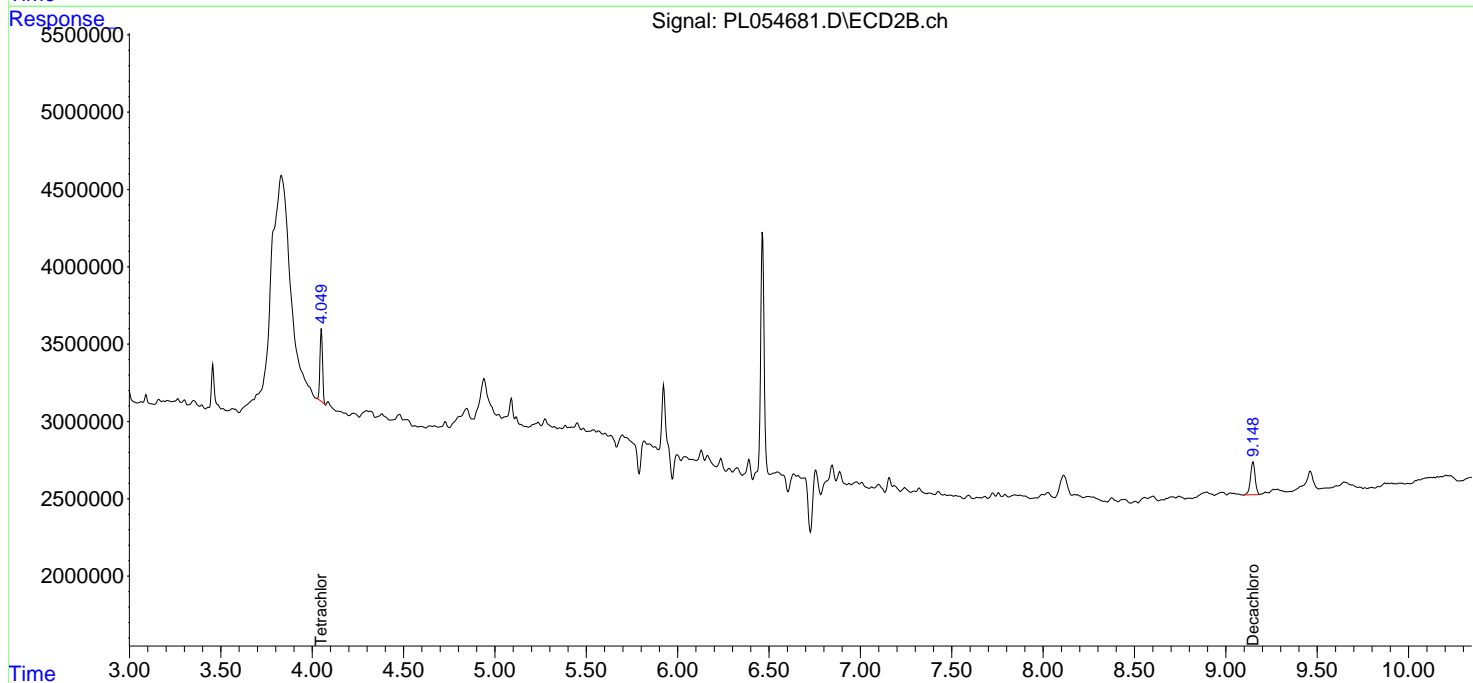
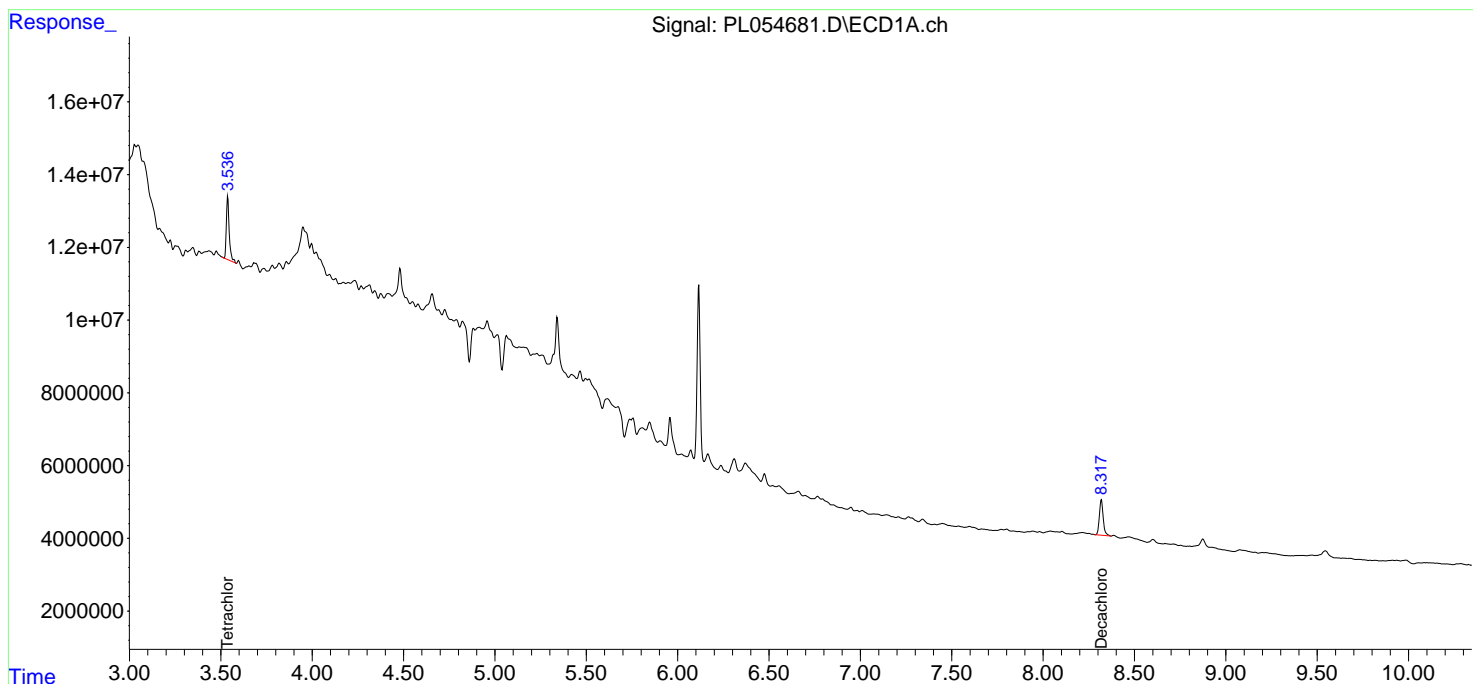
Data Path : Z:\pestpcbsrv\HPCHEM1\ECD_L\Data\PL112619\
 Data File : PL054681.D
 Signal(s) : Signal #1: ECD1A.ch Signal #2: ECD2B.ch
 Acq On : 27 Nov 2019 04:09
 Operator : SG\AJ
 Sample : K5999-01 10X
 Misc :
 ALS Vial : 50 Sample Multiplier: 1

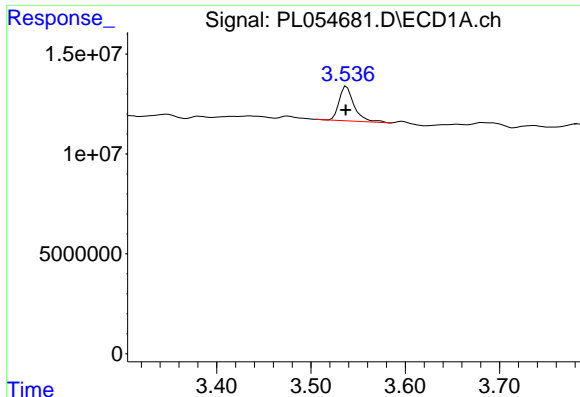
Instrument :
 ECD_L
ClientSampleId :
 IDLEWILD-BH-01A

Manual Integrations
APPROVED
 Ankita
 11/27/2019 11:43:32 AM

Integration File signal 1: autoint1.e
 Integration File signal 2: autoint2.e
 Quant Time: Nov 27 06:19:41 2019
 Quant Method : Z:\pestpcbsrv\HPCHEM1\ECD_L\methods\PL112619.M
 Quant Title : GC Extractables
 QLast Update : Wed Nov 27 01:19:55 2019
 Response via : Initial Calibration
 Integrator: ChemStation

Volume Inj. : 1 µl
 Signal #1 Phase : ZB-MR2 Signal #2 Phase: ZB-MR1
 Signal #1 Info : 30M x 0.32mm x0.2 Signal #2 Info : 30M x 0.32mm x0.5µm





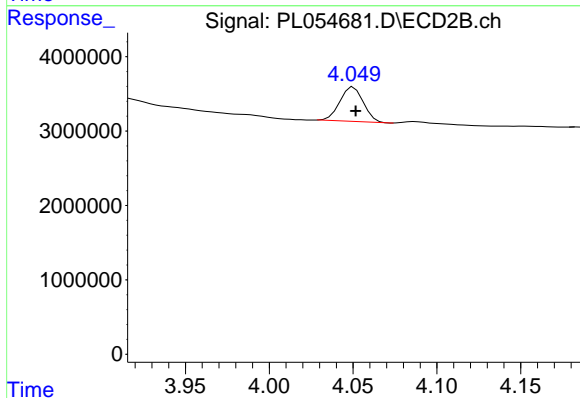
#1 Tetrachloro-m-xylene

R.T.: 3.538 min
 Delta R.T.: 0.000 min
 Response: 19132241
 Conc: 1.64 ng/ml

Instrument :
 ECD_L
 ClientSampleId :
 IDLEWILD-BH-01A

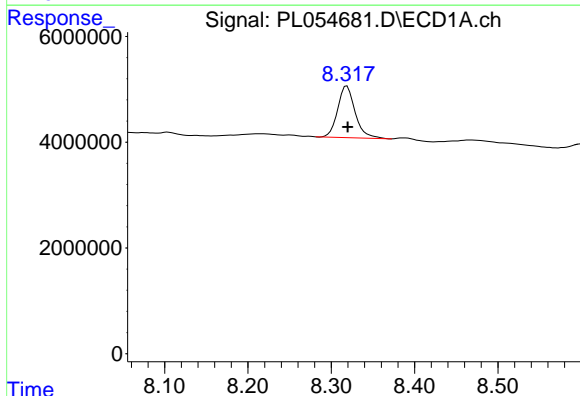
Manual Integrations
 APPROVED

Ankita
 11/27/2019 11:43:32 AM



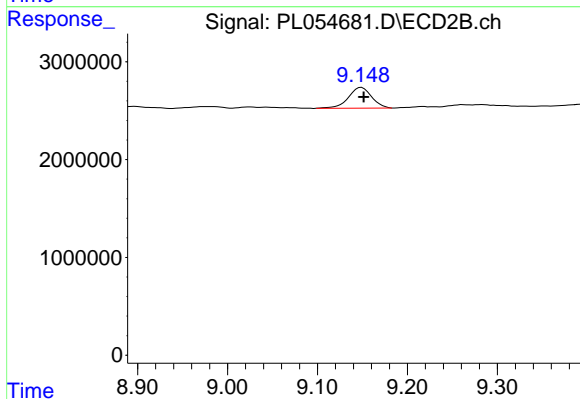
#1 Tetrachloro-m-xylene

R.T.: 4.050 min
 Delta R.T.: -0.001 min
 Response: 4520082
 Conc: 1.77 ng/ml



#28 Decachlorobiphenyl

R.T.: 8.319 min
 Delta R.T.: 0.000 min
 Response: 14260718
 Conc: 1.49 ng/ml



#28 Decachlorobiphenyl

R.T.: 9.148 min
 Delta R.T.: -0.004 min
 Response: 3787090
 Conc: 1.58 ng/ml m