

Data Path : Z:\pestpcbsrv\HPCHEM1\ECD_L\Data\PL112718\
 Data File : PL042533.D
 Signal(s) : Signal #1: ECD1A.ch Signal #2: ECD2B.ch
 Acq On : 27 Nov 2018 22:43
 Operator : AJ\SJ
 Sample : J5774-08
 Misc :
 ALS Vial : 28 Sample Multiplier: 1

Instrument :
 ECD_L
 ClientSampleId :

Integration File signal 1: autoint1.e
 Integration File signal 2: autoint2.e
 Quant Time: Nov 28 00:27:55 2018
 Quant Method : Z:\pestpcbsrv\HPCHEM1\ECD_L\methods\PL112018.M
 Quant Title : GC Extractables
 QLast Update : Tue Nov 20 02:29:59 2018
 Response via : Initial Calibration
 Integrator: ChemStation

Volume Inj. : 2 µl
 Signal #1 Phase : ZB-MR2 Signal #2 Phase: ZB-MR2
 Signal #1 Info : 30M x 0.32mm x0.5 Signal #2 Info : 30M x 0.32mm x0.25µm

	Compound	RT#1	RT#2	Resp#1	Resp#2	ng/ml	ng/ml

System Monitoring Compounds							
1)	SA Tetrachlo...	3.467	4.103	105.8E6	55966632	17.985	19.459
28)	SA Decachlor...	8.208	9.239	110.8E6	46013772	17.586	19.078
Target Compounds							
2)	A alpha-BHC	3.905	4.447f	4008814	1784240	0.444	0.417
3)	MA gamma-BHC...	4.200	0.000	918187	0	0.111	N.D. #
6)	B beta-BHC	4.403f	0.000	11310183	0	3.192	N.D. #
7)	B delta-BHC	4.659	0.000	1021406	0	0.133	N.D. #
8)	B Heptachlo...	5.244f	5.998	13605795	2457497	1.795	0.685 #
9)	A Endosulfan I	5.491	0.000	1783270	0	0.258	N.D. #
10)	B gamma-Chl...	0.000	6.169f	0	3672588	N.D.	1.079 #
11)	B alpha-Chl...	5.491	0.000	1783270	0	0.238	N.D. #
13)	MA Dieldrin	5.765	0.000	3114770	0	0.423	N.D. #
14)	MA Endrin	0.000	6.862	0	2569224	N.D.	0.933 #
16)	A 4,4'-DDD	6.148	0.000	1744801	0	0.330	N.D. #
23)	Chlordane-1	4.403	0.000	11310183	0	40.909	N.D. #
25)	Chlordane-3	0.000	6.169	0	3672588	N.D.	7.815 #
26)	Chlordane-4	5.491	0.000	1783270	0	2.350	N.D. #

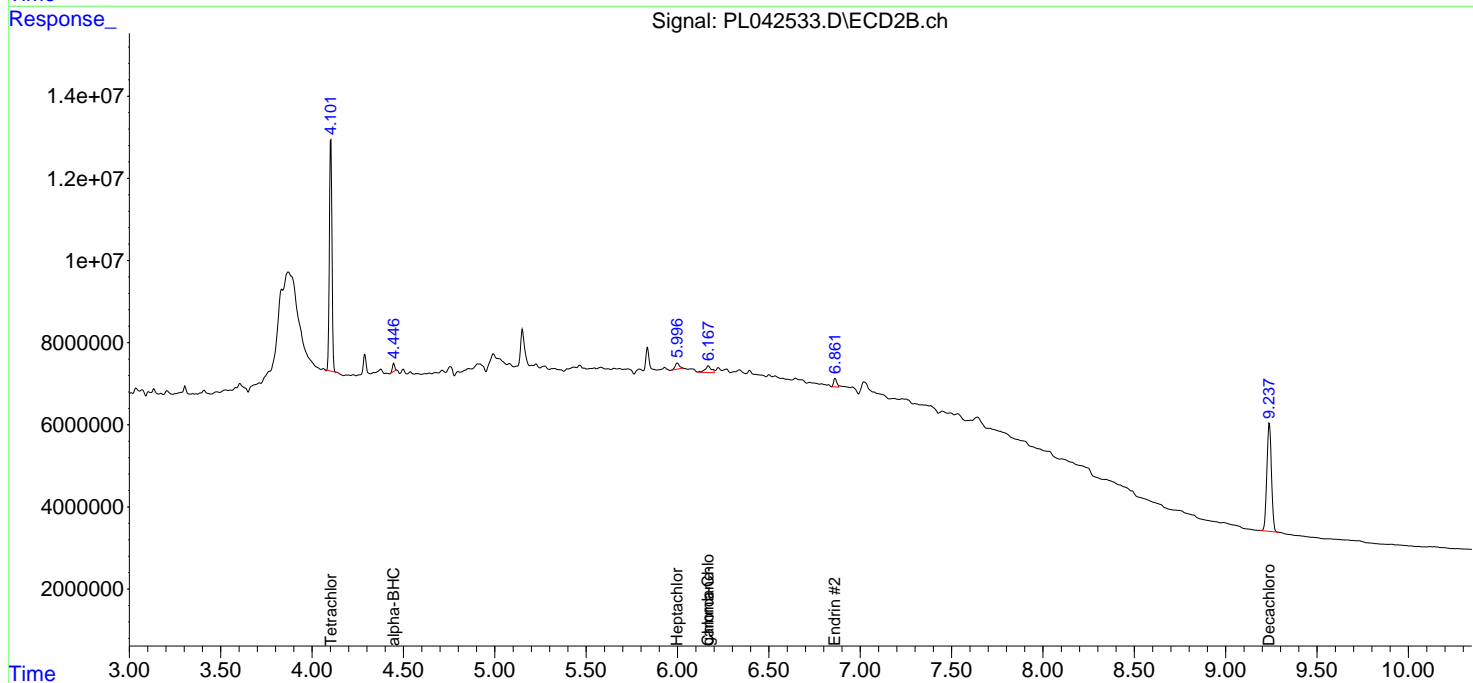
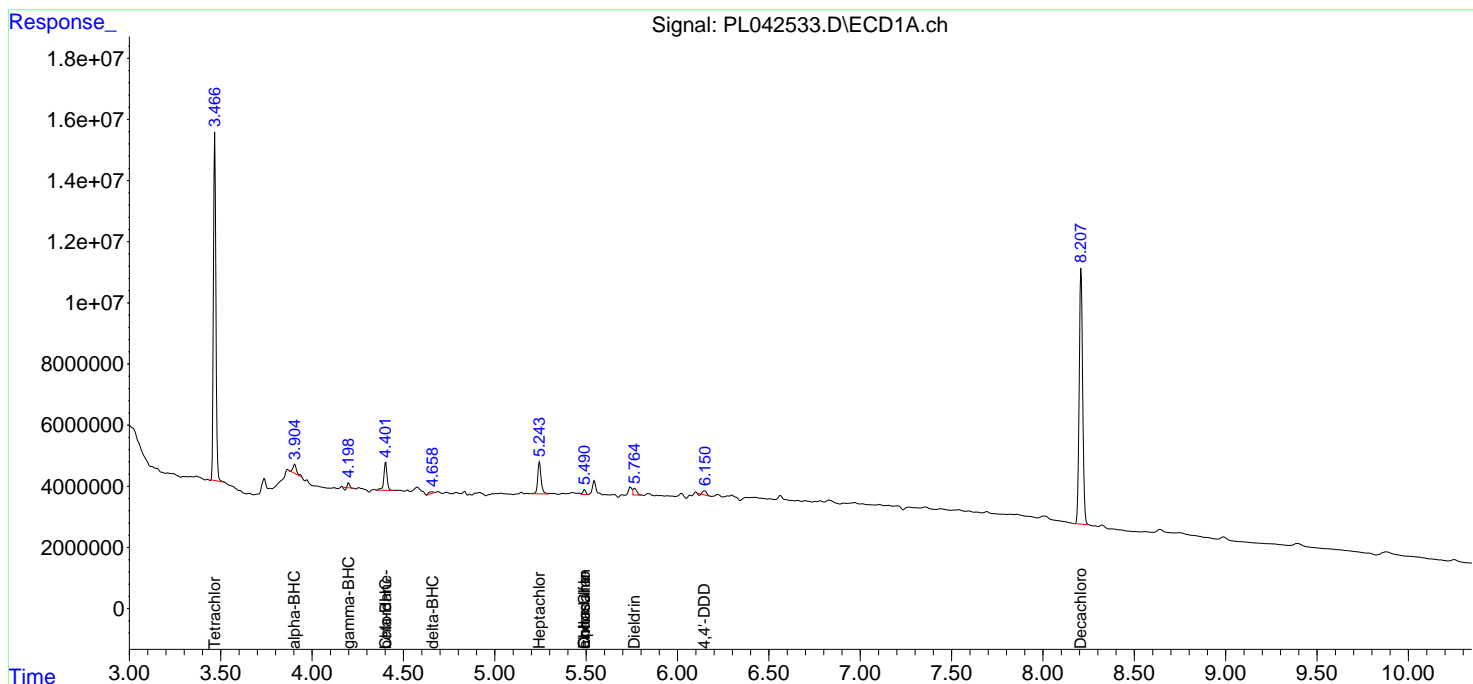
(f)=RT Delta > 1/2 Window (#)=Amounts differ by > 25% (m)=manual int.

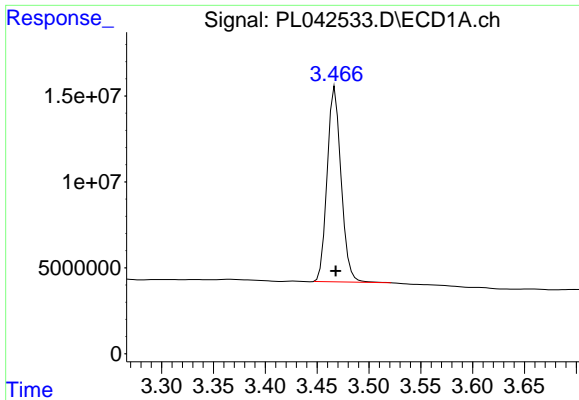
Data Path : Z:\pestpcbsrv\HPCHEM1\ECD_L\Data\PL112718\
 Data File : PL042533.D
 Signal(s) : Signal #1: ECD1A.ch Signal #2: ECD2B.ch
 Acq On : 27 Nov 2018 22:43
 Operator : AJ\SJ
 Sample : J5774-08
 Misc :
 ALS Vial : 28 Sample Multiplier: 1

Instrument :
 ECD_L
 ClientSampled :

Integration File signal 1: autoint1.e
 Integration File signal 2: autoint2.e
 Quant Time: Nov 28 00:27:55 2018
 Quant Method : Z:\pestpcbsrv\HPCHEM1\ECD_L\methods\PL112018.M
 Quant Title : GC Extractables
 QLast Update : Tue Nov 20 02:29:59 2018
 Response via : Initial Calibration
 Integrator: ChemStation

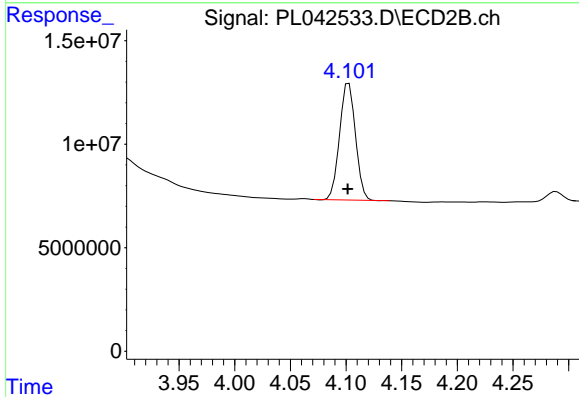
Volume Inj. : 2 µl
 Signal #1 Phase : ZB-MR1 Signal #2 Phase: ZB-MR2
 Signal #1 Info : 30M x 0.32mm x0.5 Signal #2 Info : 30M x 0.32mm x0.25µm



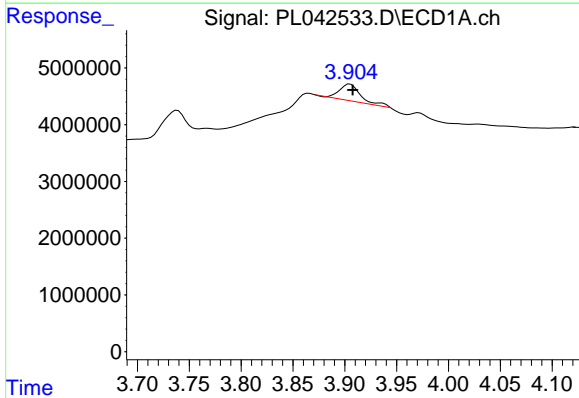


#1 Tetrachloro-m-xylene
 R.T.: 3.467 min
 Delta R.T.: 0.000 min
 Response: 105814096
 Conc: 17.98 ng/ml

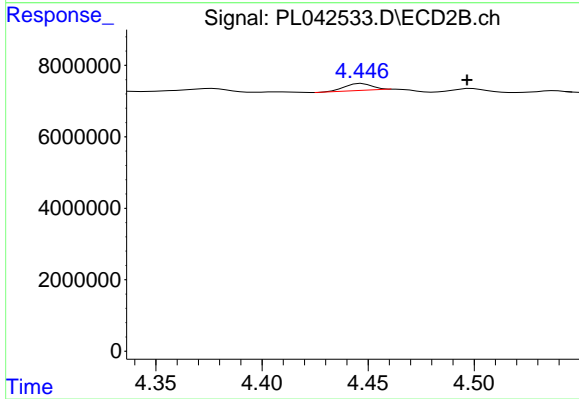
Instrument :
 ECD_L
 ClientSampleId :



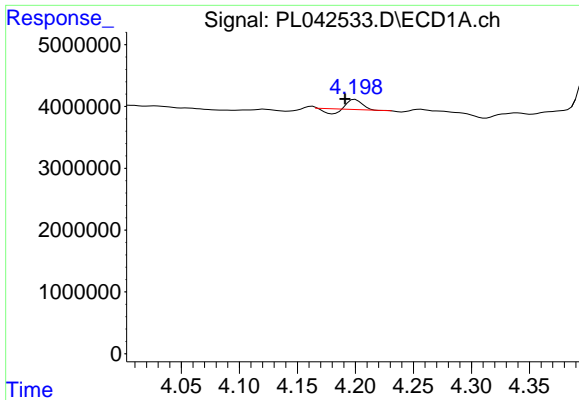
#1 Tetrachloro-m-xylene
 R.T.: 4.103 min
 Delta R.T.: 0.001 min
 Response: 55966632
 Conc: 19.46 ng/ml



#2 alpha-BHC
 R.T.: 3.905 min
 Delta R.T.: -0.003 min
 Response: 4008814
 Conc: 0.44 ng/ml

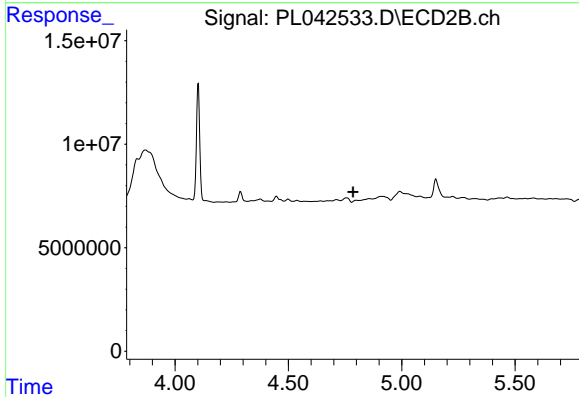


#2 alpha-BHC
 R.T.: 4.447 min
 Delta R.T.: -0.050 min
 Response: 1784240
 Conc: 0.42 ng/ml

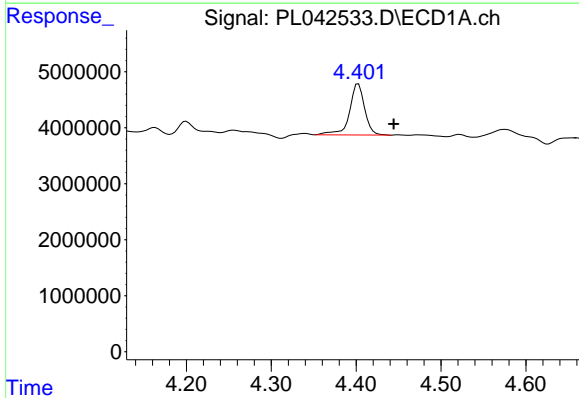


#3 gamma-BHC (Lindane)
 R.T.: 4.200 min
 Delta R.T.: 0.009 min
 Response: 918187
 Conc: 0.11 ng/ml

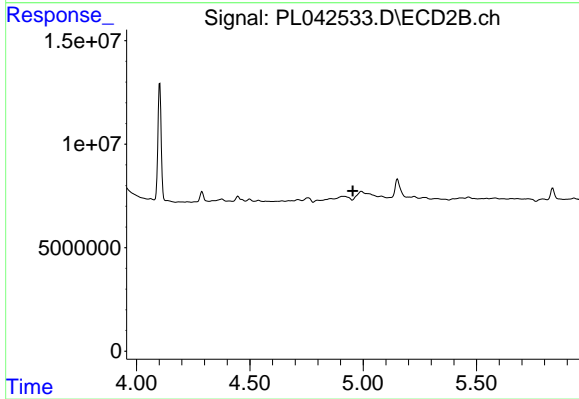
Instrument :
 ECD_L
 ClientSampleId :



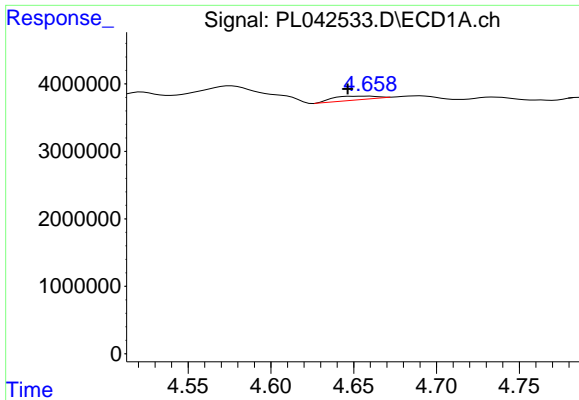
#3 gamma-BHC (Lindane)
 R.T.: 0.000 min
 Exp R.T. : 4.785 min
 Response: 0
 Conc: N.D.



#6 beta-BHC
 R.T.: 4.403 min
 Delta R.T.: -0.042 min
 Response: 11310183
 Conc: 3.19 ng/ml



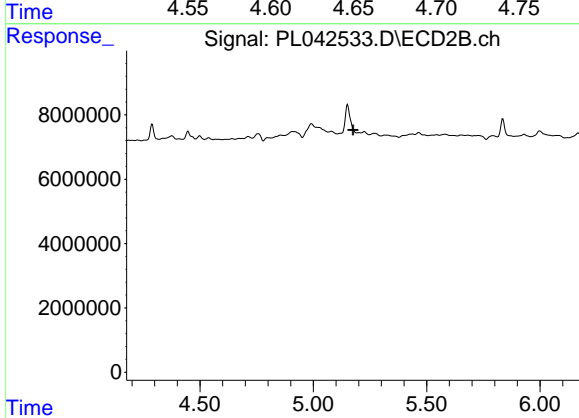
#6 beta-BHC
 R.T.: 0.000 min
 Exp R.T. : 4.954 min
 Response: 0
 Conc: N.D.



#7 delta-BHC

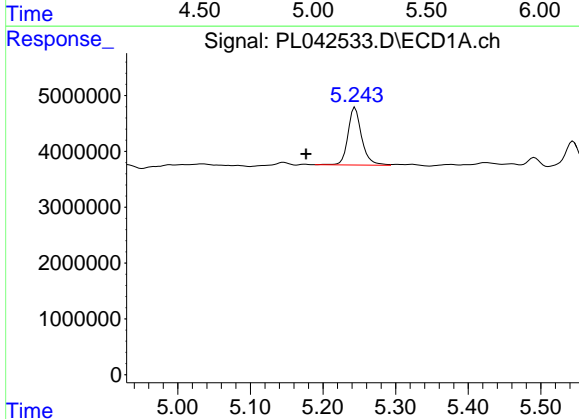
R.T.: 4.659 min
 Delta R.T.: 0.013 min
 Response: 1021406
 Conc: 0.13 ng/ml

Instrument :
 ECD_L
 ClientSampleId :



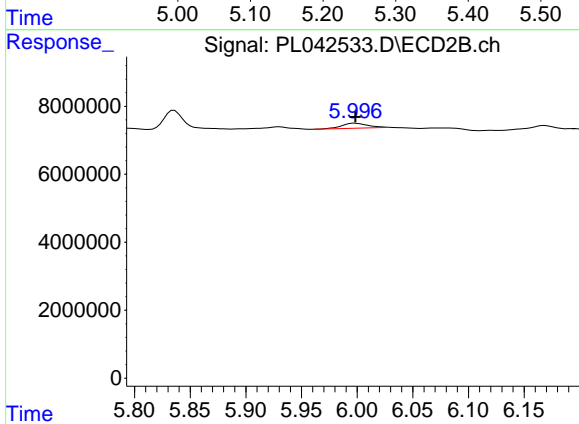
#7 delta-BHC

R.T.: 0.000 min
 Exp R.T. : 5.175 min
 Response: 0
 Conc: N.D.



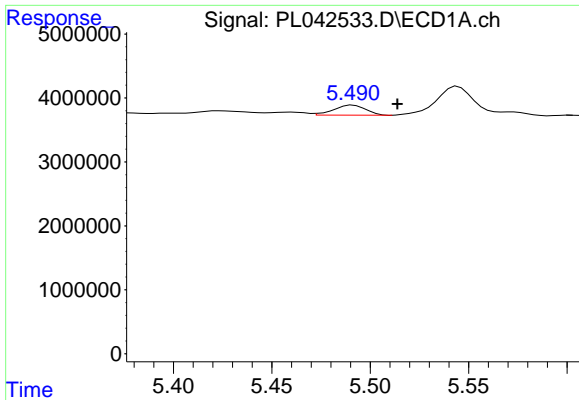
#8 Heptachlor epoxide

R.T.: 5.244 min
 Delta R.T.: 0.068 min
 Response: 13605795
 Conc: 1.80 ng/ml



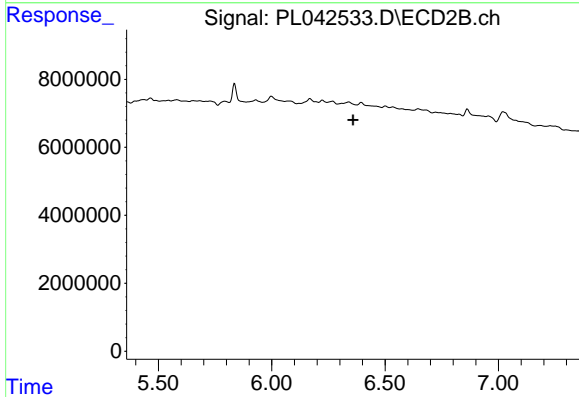
#8 Heptachlor epoxide

R.T.: 5.998 min
 Delta R.T.: 0.000 min
 Response: 2457497
 Conc: 0.69 ng/ml

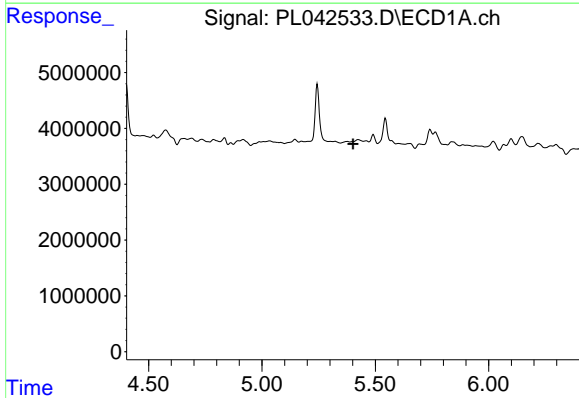


#9 Endosulfan I
 R.T.: 5.491 min
 Delta R.T.: -0.023 min
 Response: 1783270
 Conc: 0.26 ng/ml

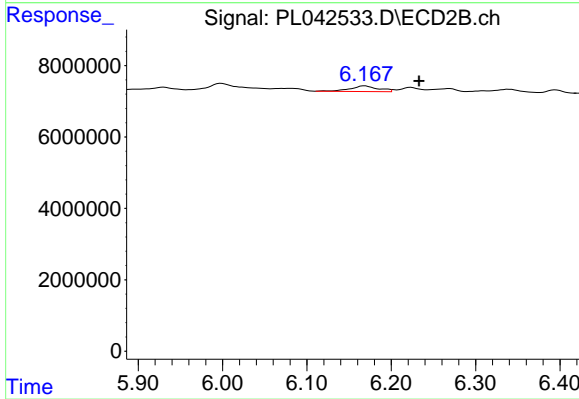
Instrument :
 ECD_L
 ClientSampled :



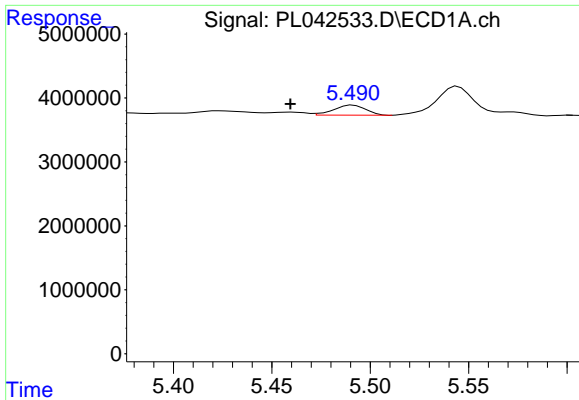
#9 Endosulfan I
 R.T.: 0.000 min
 Exp R.T. : 6.358 min
 Response: 0
 Conc: N.D.



#10 gamma-Chlordane
 R.T.: 0.000 min
 Exp R.T. : 5.402 min
 Response: 0
 Conc: N.D.

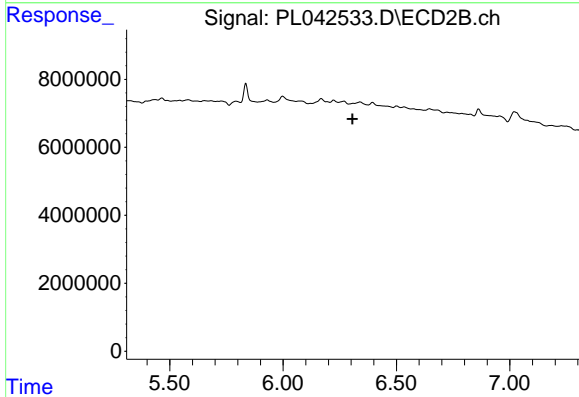


#10 gamma-Chlordane
 R.T.: 6.169 min
 Delta R.T.: -0.064 min
 Response: 3672588
 Conc: 1.08 ng/ml

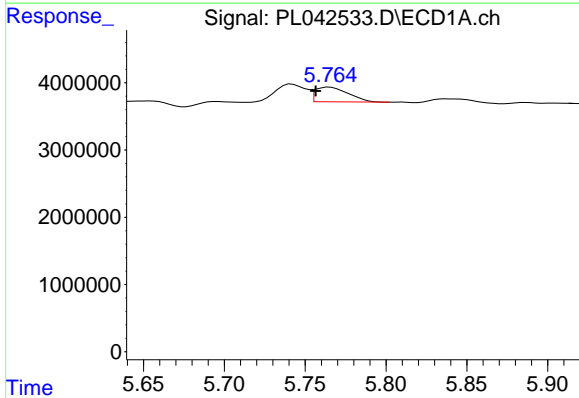


#11 alpha-Chlordane
 R.T.: 5.491 min
 Delta R.T.: 0.032 min
 Response: 1783270
 Conc: 0.24 ng/ml

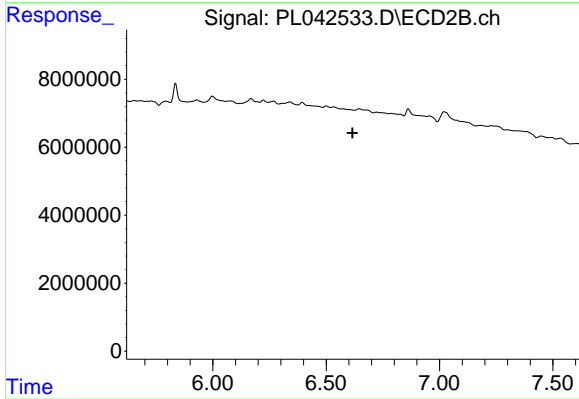
Instrument :
 ECD_L
 ClientSampled :



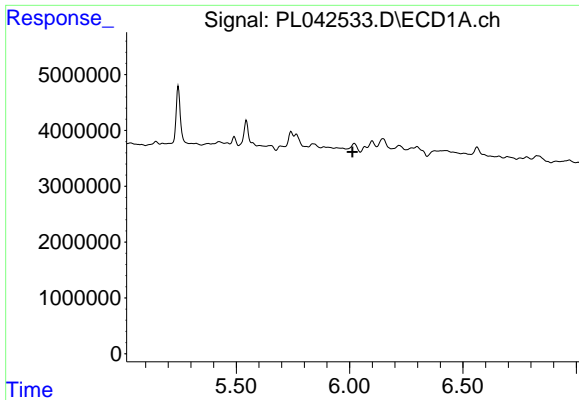
#11 alpha-Chlordane
 R.T.: 0.000 min
 Exp R.T. : 6.307 min
 Response: 0
 Conc: N.D.



#13 Dieldrin
 R.T.: 5.765 min
 Delta R.T.: 0.009 min
 Response: 3114770
 Conc: 0.42 ng/ml

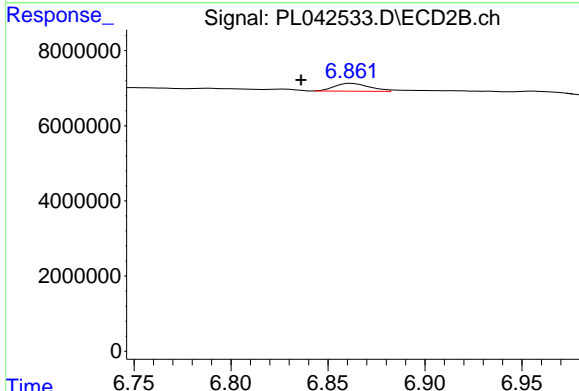


#13 Dieldrin
 R.T.: 0.000 min
 Exp R.T. : 6.617 min
 Response: 0
 Conc: N.D.

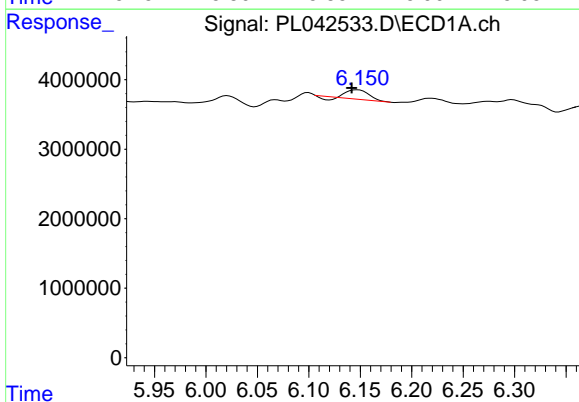


#14 Endrin
 R.T.: 0.000 min
 Exp R.T.: 6.013 min
 Response: 0
 Conc: N.D.

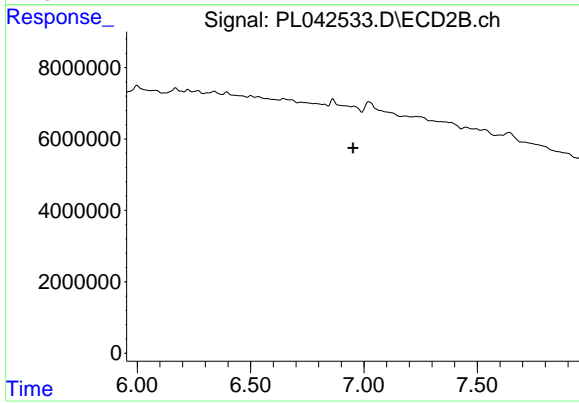
Instrument :
 ECD_L
 ClientSampled :



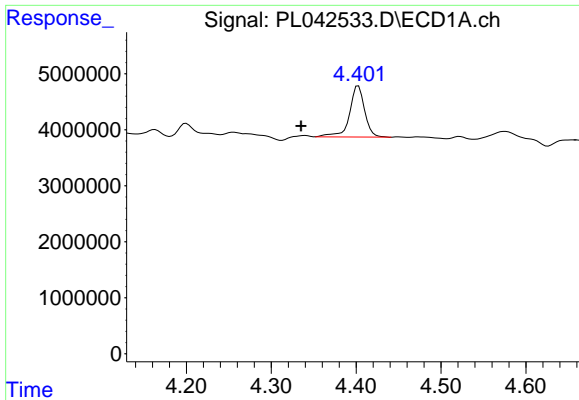
#14 Endrin
 R.T.: 6.862 min
 Delta R.T.: 0.026 min
 Response: 2569224
 Conc: 0.93 ng/ml



#16 4,4'-DDD
 R.T.: 6.148 min
 Delta R.T.: 0.006 min
 Response: 1744801
 Conc: 0.33 ng/ml

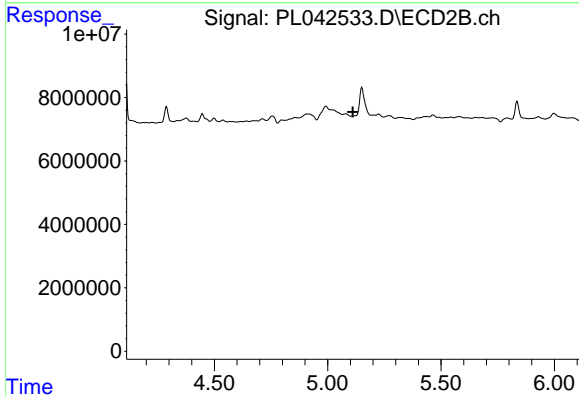


#16 4,4'-DDD
 R.T.: 0.000 min
 Exp R.T.: 6.953 min
 Response: 0
 Conc: N.D.

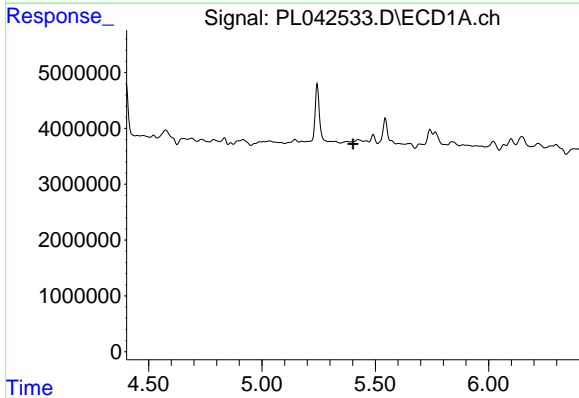


#23 Chlordane-1
 R.T.: 4.403 min
 Delta R.T.: 0.067 min
 Response: 11310183
 Conc: 40.91 ng/ml

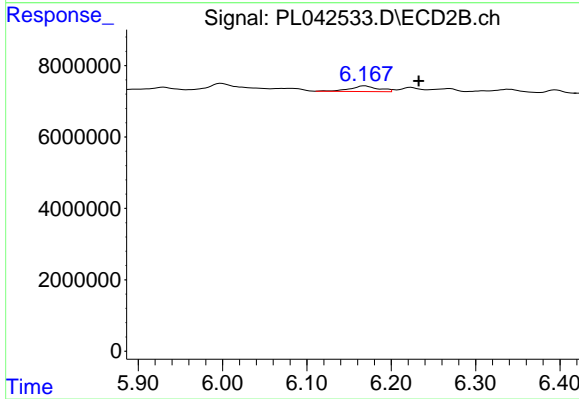
Instrument :
 ECD_L
 ClientSampled :



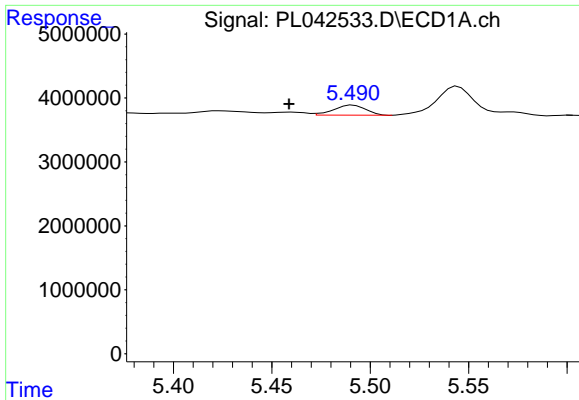
#23 Chlordane-1
 R.T.: 0.000 min
 Exp R.T. : 5.111 min
 Response: 0
 Conc: N.D.



#25 Chlordane-3
 R.T.: 0.000 min
 Exp R.T. : 5.402 min
 Response: 0
 Conc: N.D.

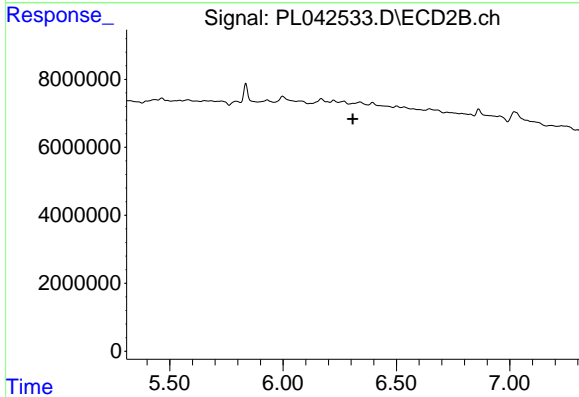


#25 Chlordane-3
 R.T.: 6.169 min
 Delta R.T.: -0.064 min
 Response: 3672588
 Conc: 7.82 ng/ml

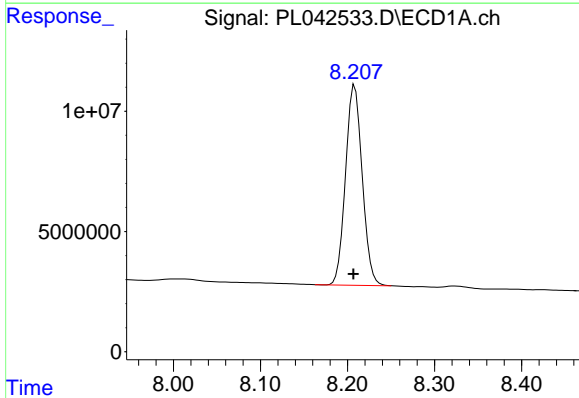


#26 Chlordane-4
 R.T.: 5.491 min
 Delta R.T.: 0.032 min
 Response: 1783270
 Conc: 2.35 ng/ml

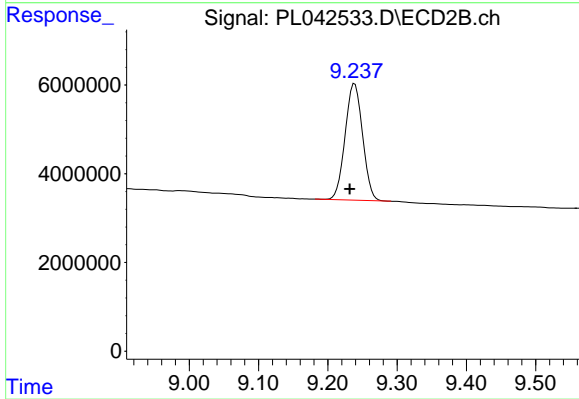
Instrument :
 ECD_L
 ClientSampleId :



#26 Chlordane-4
 R.T.: 0.000 min
 Exp R.T. : 6.308 min
 Response: 0
 Conc: N.D.



#28 Decachlorobiphenyl
 R.T.: 8.208 min
 Delta R.T.: 0.001 min
 Response: 110827607
 Conc: 17.59 ng/ml



#28 Decachlorobiphenyl
 R.T.: 9.239 min
 Delta R.T.: 0.007 min
 Response: 46013772
 Conc: 19.08 ng/ml