

Data Path : Z:\pestpcbsrv\HPCHEM1\ECD_L\Data\PL112723\
 Data File : PL086827.D
 Signal(s) : Signal #1: ECD1A.ch Signal #2: ECD2B.ch
 Acq On : 27 Nov 2023 11:25
 Operator : AR\AJ
 Sample : 05540-01MSD
 Misc :
 ALS Vial : 11 Sample Multiplier: 1

Instrument :
 ECD_L
 ClientSampleId :

Integration File signal 1: autoint1.e
 Integration File signal 2: autoint2.e
 Quant Time: Nov 27 11:39:10 2023
 Quant Method : Z:\pestpcbsrv\HPCHEM1\ECD_L\methods\PL110823.M
 Quant Title : GC Extractables
 QLast Update : Wed Nov 08 13:04:14 2023
 Response via : Initial Calibration
 Integrator: ChemStation

Volume Inj. : 1 µl
 Signal #1 Phase : ZB-MR2 Signal #2 Phase: ZB-MR1
 Signal #1 Info : 30M x 0.32mm x0.2 Signal #2 Info : 30M x 0.32mm x0.5µm

	Compound	RT#1	RT#2	Resp#1	Resp#2	ng/ml	ng/ml

System Monitoring Compounds							
1)	SA Tetrachlo...	3.351	2.616	47751838	15026559	14.706	15.261
28)	SA Decachlor...	8.852	7.767	31142667	12911557	10.639	10.692
Target Compounds							
2)	A alpha-BHC	3.805	3.115	218.5E6	64424390	45.427	48.332
3)	MA gamma-BHC...	4.137	3.442	209.8E6	63072460	44.600	47.526
4)	MA Heptachlor	4.724	3.778	212.4E6	66646855	46.550	49.787
5)	MB Aldrin	5.063	4.054	197.0E6	69131980	43.522	53.125
6)	B beta-BHC	4.340	3.745	87835076	27639483	43.427	46.372
7)	B delta-BHC	4.584	3.969	203.9E6	63014909	44.400	48.166
8)	B Heptachlo...	5.493	4.559	137.6E6	56346521	35.385	46.916 #
9)	A Endosulfan I	5.877	4.926	164.9E6	51172832	43.950	44.504
10)	B gamma-Chl...	5.751	4.810	176.0E6	57077747	42.950	46.262
11)	B alpha-Chl...	5.830	4.874	173.3E6	56634145	42.680	45.290
12)	B 4,4'-DDE	6.015	5.073	144.9E6	50089829	41.780	48.796
13)	MA Dieldrin	6.154	5.192	150.5E6	54258389	38.287	45.474
14)	MA Endrin	6.383	5.466	143.3E6	51427881	41.602	46.952
15)	B Endosulfa...	6.606	5.764	127.0E6	46914454	35.740	42.744
16)	A 4,4'-DDD	6.533	5.630	116.5E6	42414228	43.743	49.783
17)	MA 4,4'-DDT	6.849	5.880	129.4E6	45049966	43.652	46.083
18)	B Endrin al...	6.737	5.946	106.9E6	38623199	40.311	41.231
19)	B Endosulfa...	6.973	6.170	130.1E6	47795710	38.758	44.004
20)	A Methoxychlor	7.335	6.465	73103791	28403709	45.808	47.484
21)	B Endrin ke...	7.455	6.672	138.8E6	55593891	40.729	43.388
22)	Mirex	7.928	6.848	108.3E6	45001745	38.359	39.589
23)	Chlordane-1	4.509	3.590f	8354953	225731	59.716	6.443 #
24)	Chlordane-2	5.063f	4.171	197.0E6	2192322	1299.997	48.538 #
25)	Chlordane-3	5.751	4.810	176.0E6	57077747	304.224	484.070 #
26)	Chlordane-4	5.830	4.874	173.3E6	56634145	242.369	443.582 #
27)	Chlordane-5	0.000	5.556	0	25172	N.D.	0.693 #

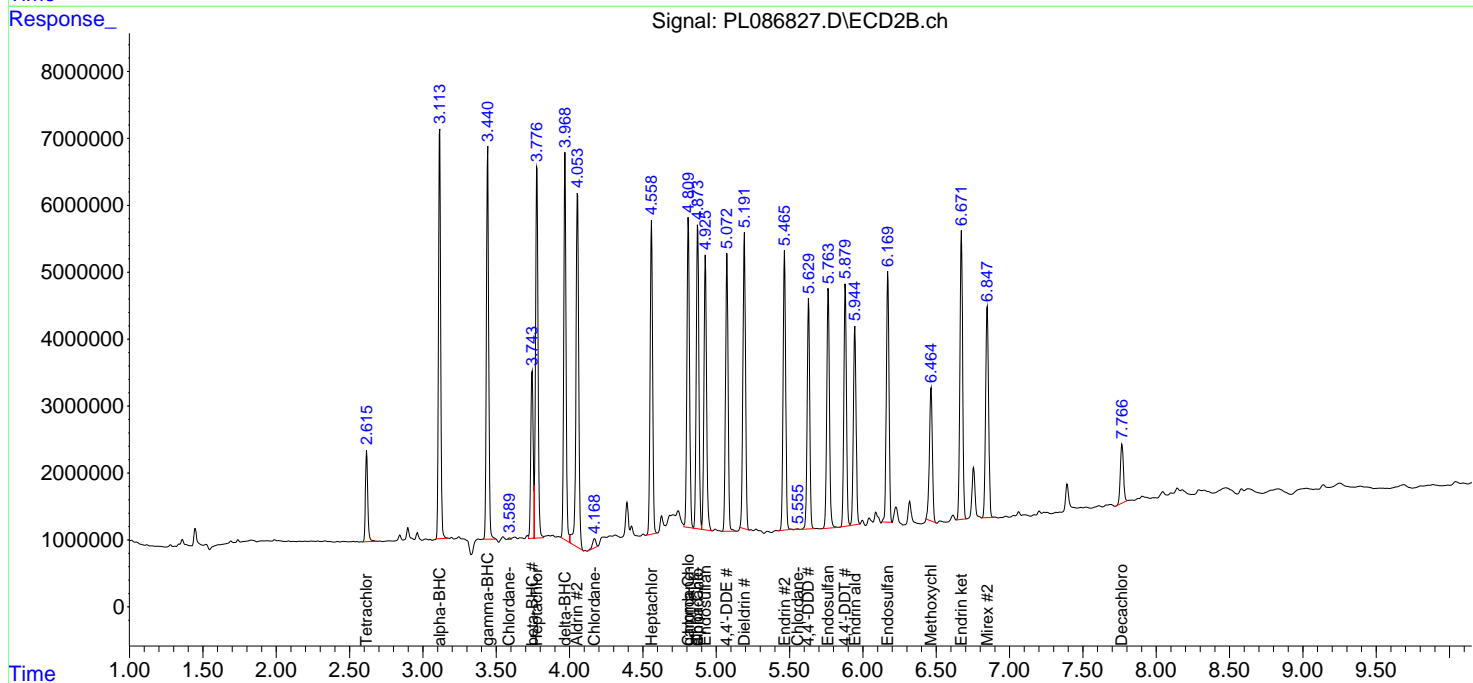
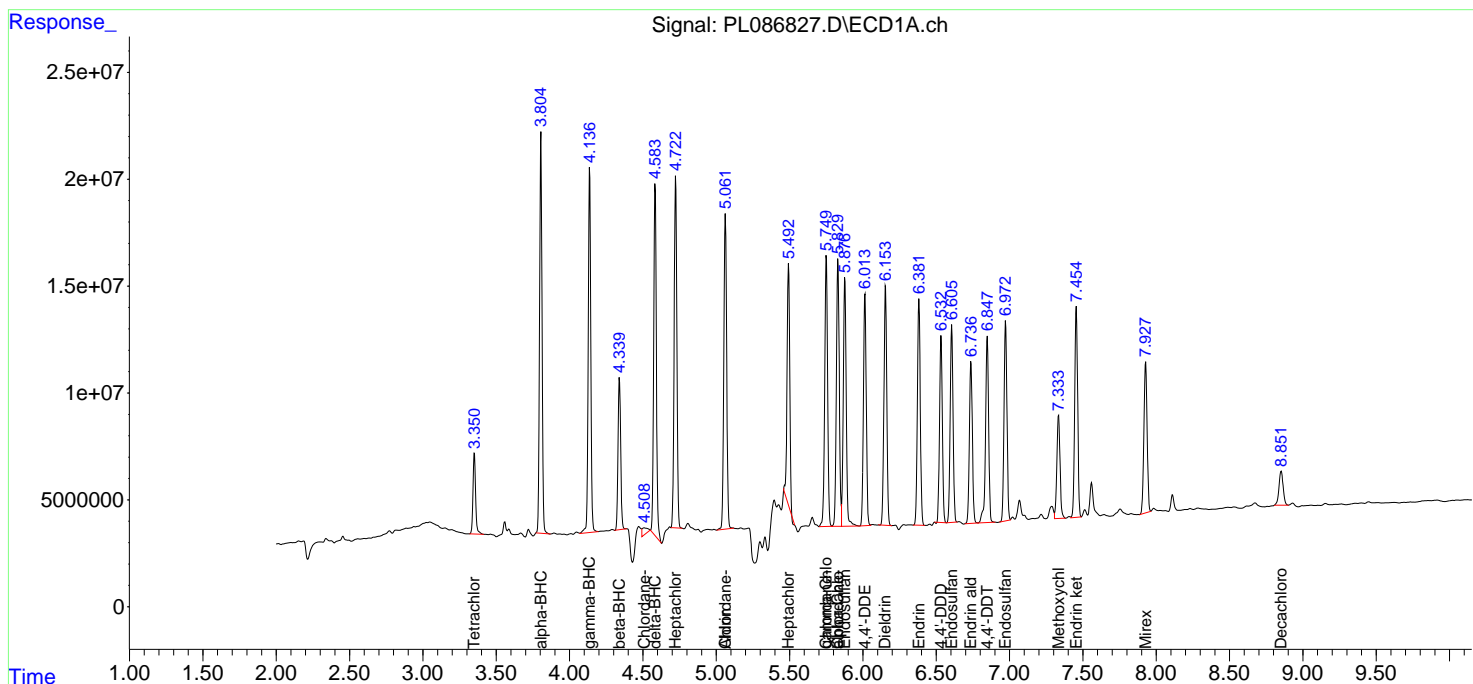
(f)=RT Delta > 1/2 Window (#)=Amounts differ by > 25% (m)=manual int.

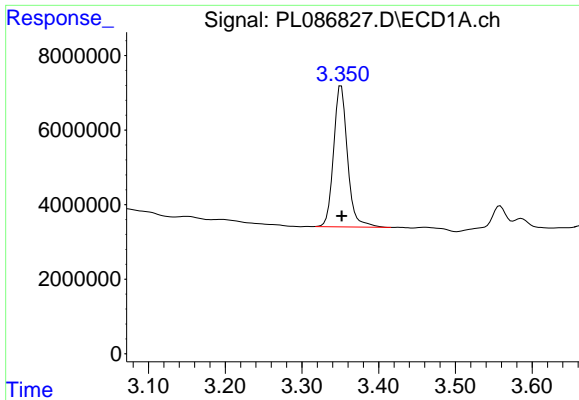
Data Path : Z:\pestpcbsrv\HPCHEM1\ECD_L\Data\PL112723\
 Data File : PL086827.D
 Signal(s) : Signal #1: ECD1A.ch Signal #2: ECD2B.ch
 Acq On : 27 Nov 2023 11:25
 Operator : AR\AJ
 Sample : 05540-01MSD
 Misc :
 ALS Vial : 11 Sample Multiplier: 1

Instrument :
 ECD_L
 ClientSampleId :

Integration File signal 1: autoint1.e
 Integration File signal 2: autoint2.e
 Quant Time: Nov 27 11:39:10 2023
 Quant Method : Z:\pestpcbsrv\HPCHEM1\ECD_L\methods\PL110823.M
 Quant Title : GC Extractables
 QLast Update : Wed Nov 08 13:04:14 2023
 Response via : Initial Calibration
 Integrator: ChemStation

Volume Inj. : 1 µl
 Signal #1 Phase : ZB-MR2 Signal #2 Phase: ZB-MR1
 Signal #1 Info : 30M x 0.32mm x0.2 Signal #2 Info : 30M x 0.32mm x0.5µm

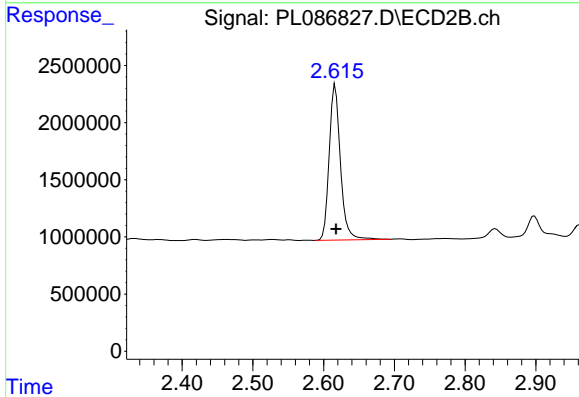




#1 Tetrachloro-m-xylene

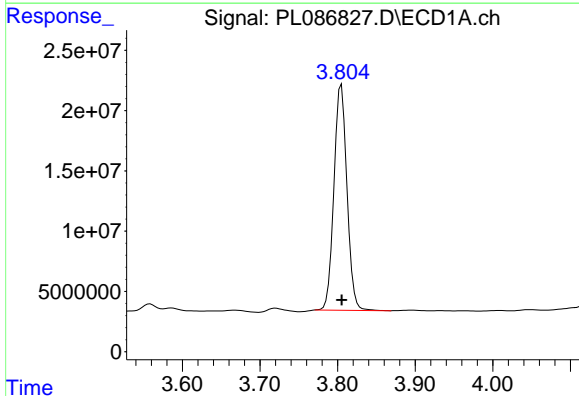
R.T.: 3.351 min
 Delta R.T.: 0.000 min
 Response: 47751838
 Conc: 14.71 ng/ml

Instrument :
 ECD_L
 ClientSampleId :



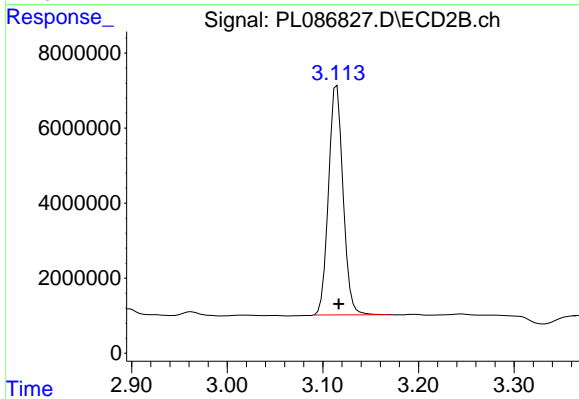
#1 Tetrachloro-m-xylene

R.T.: 2.616 min
 Delta R.T.: -0.001 min
 Response: 15026559
 Conc: 15.26 ng/ml



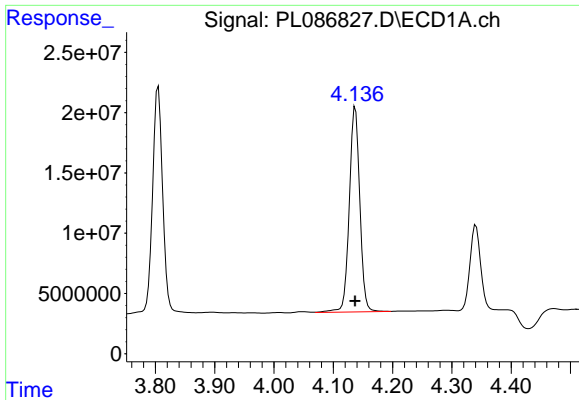
#2 alpha-BHC

R.T.: 3.805 min
 Delta R.T.: 0.000 min
 Response: 218524084
 Conc: 45.43 ng/ml



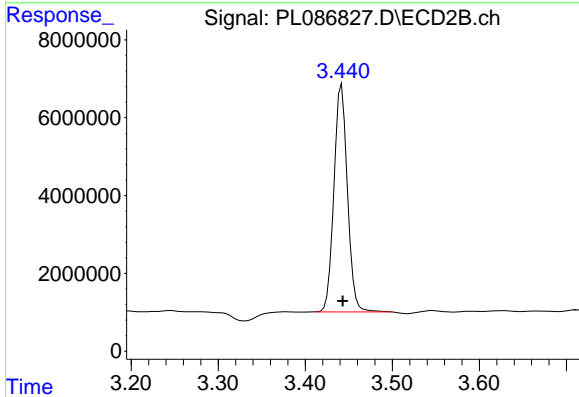
#2 alpha-BHC

R.T.: 3.115 min
 Delta R.T.: -0.002 min
 Response: 64424390
 Conc: 48.33 ng/ml

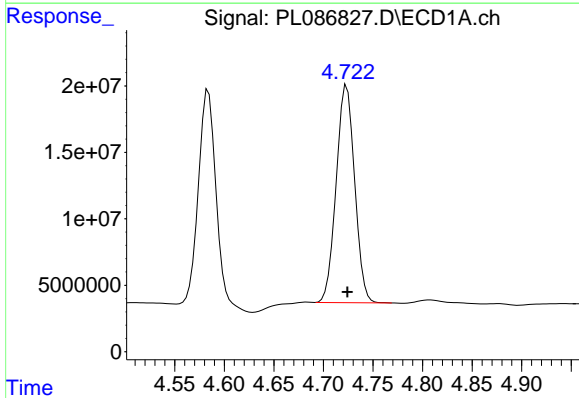


#3 gamma-BHC (Lindane)
R.T.: 4.137 min
Delta R.T.: 0.000 min
Response: 209825480
Conc: 44.60 ng/ml

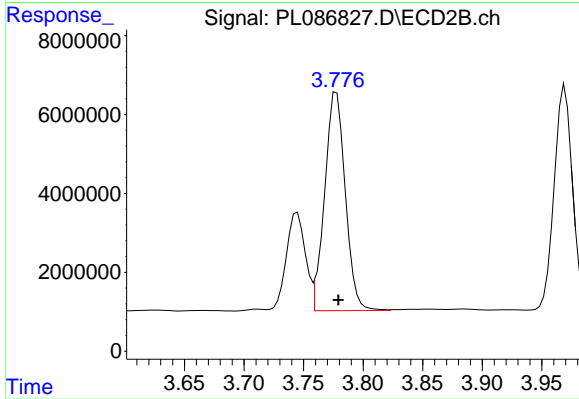
Instrument :
ECD_L
ClientSampleId :



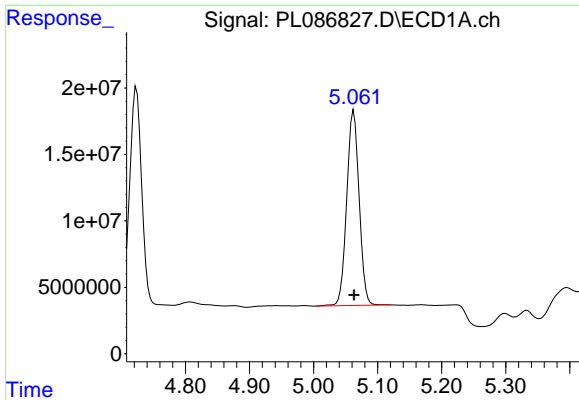
#3 gamma-BHC (Lindane)
R.T.: 3.442 min
Delta R.T.: -0.001 min
Response: 63072460
Conc: 47.53 ng/ml



#4 Heptachlor
R.T.: 4.724 min
Delta R.T.: 0.000 min
Response: 212357278
Conc: 46.55 ng/ml



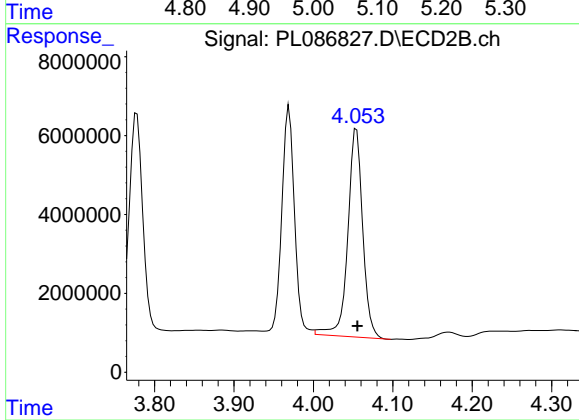
#4 Heptachlor
R.T.: 3.778 min
Delta R.T.: -0.001 min
Response: 66646855
Conc: 49.79 ng/ml



#5 Aldrin

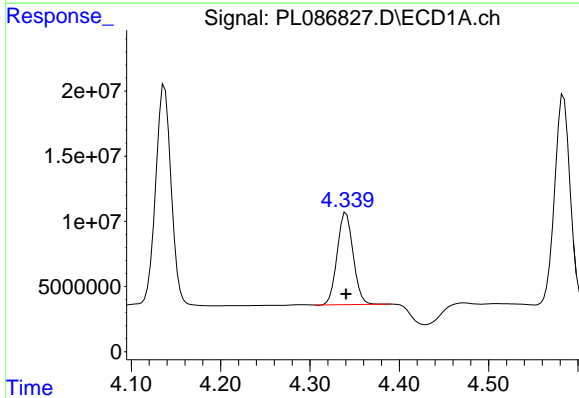
R.T.: 5.063 min
 Delta R.T.: 0.000 min
 Response: 197041643
 Conc: 43.52 ng/ml

Instrument :
 ECD_L
 ClientSampleId :



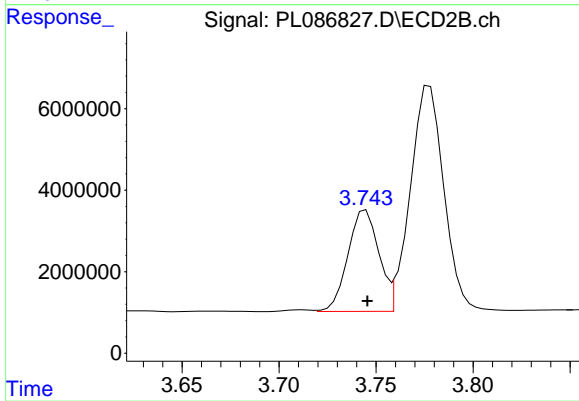
#5 Aldrin

R.T.: 4.054 min
 Delta R.T.: -0.001 min
 Response: 69131980
 Conc: 53.13 ng/ml



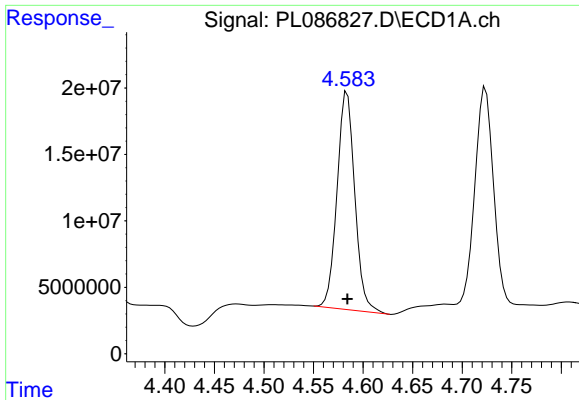
#6 beta-BHC

R.T.: 4.340 min
 Delta R.T.: 0.000 min
 Response: 87835076
 Conc: 43.43 ng/ml



#6 beta-BHC

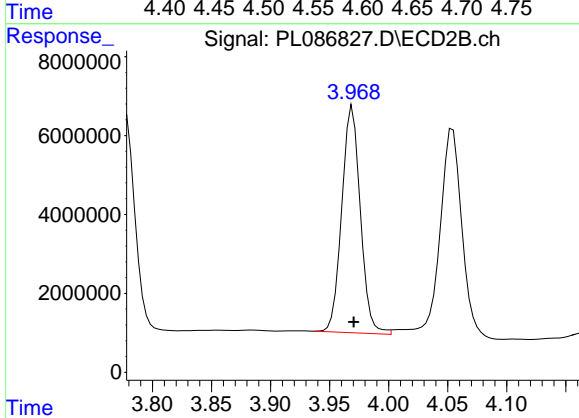
R.T.: 3.745 min
 Delta R.T.: 0.000 min
 Response: 27639483
 Conc: 46.37 ng/ml



#7 delta-BHC

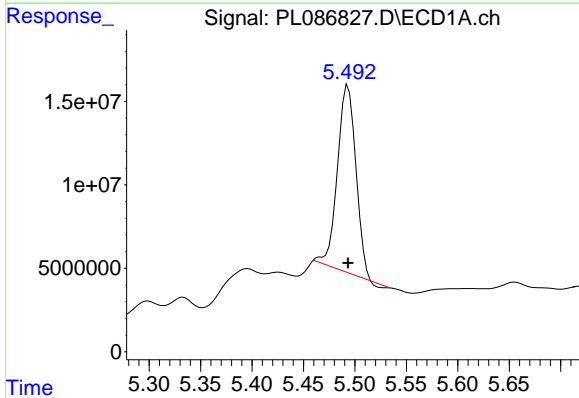
R.T.: 4.584 min
 Delta R.T.: 0.000 min
 Response: 203855161
 Conc: 44.40 ng/ml

Instrument :
 ECD_L
 ClientSampleId :



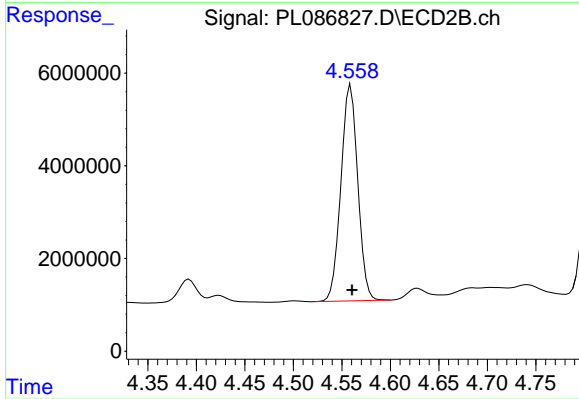
#7 delta-BHC

R.T.: 3.969 min
 Delta R.T.: 0.000 min
 Response: 63014909
 Conc: 48.17 ng/ml



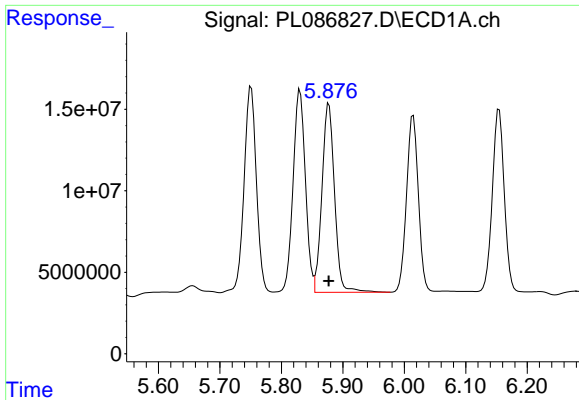
#8 Heptachlor epoxide

R.T.: 5.493 min
 Delta R.T.: 0.000 min
 Response: 137551995
 Conc: 35.38 ng/ml



#8 Heptachlor epoxide

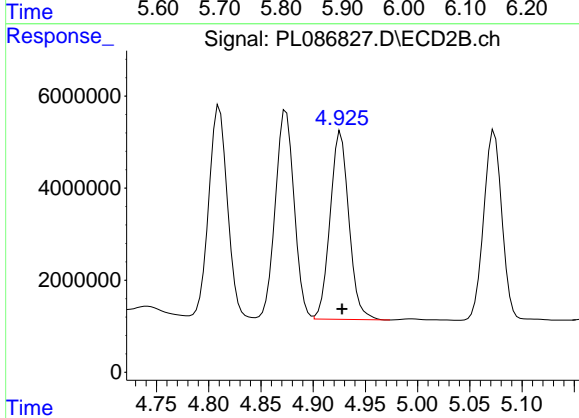
R.T.: 4.559 min
 Delta R.T.: -0.001 min
 Response: 56346521
 Conc: 46.92 ng/ml



#9 Endosulfan I

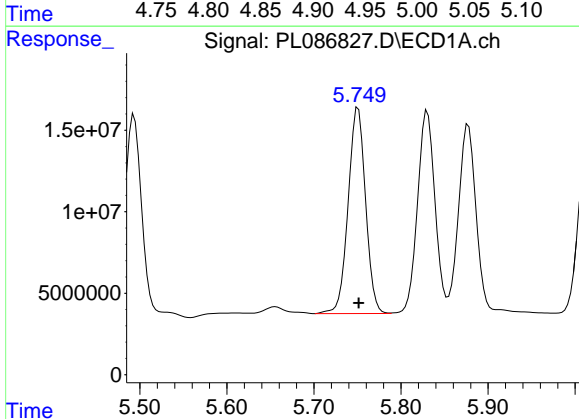
R.T.: 5.877 min
 Delta R.T.: 0.000 min
 Response: 164883886
 Conc: 43.95 ng/ml

Instrument :
 ECD_L
 ClientSampleId :



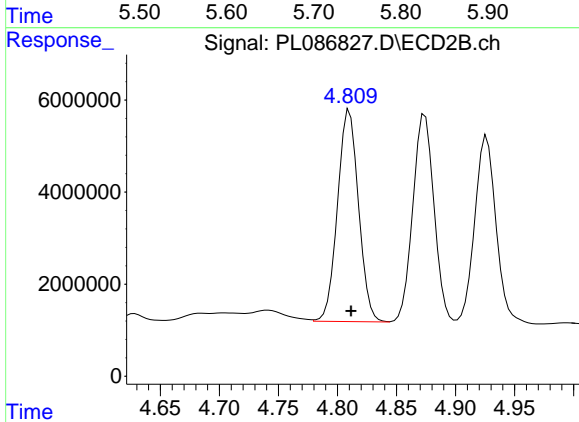
#9 Endosulfan I

R.T.: 4.926 min
 Delta R.T.: -0.001 min
 Response: 51172832
 Conc: 44.50 ng/ml



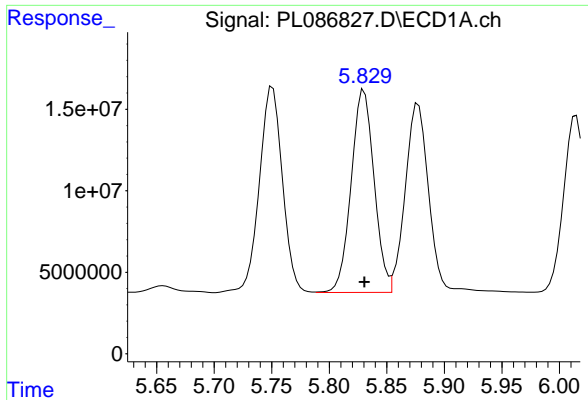
#10 gamma-Chlordane

R.T.: 5.751 min
 Delta R.T.: 0.000 min
 Response: 175975105
 Conc: 42.95 ng/ml



#10 gamma-Chlordane

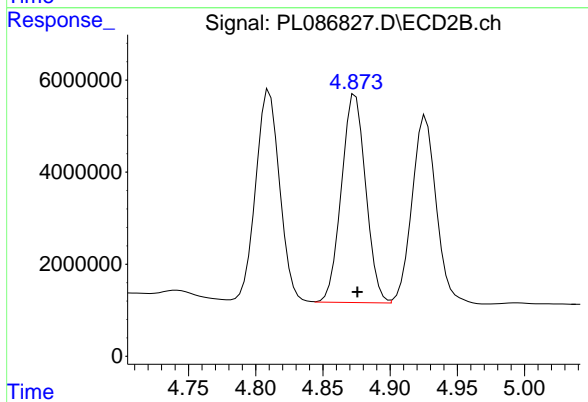
R.T.: 4.810 min
 Delta R.T.: -0.001 min
 Response: 57077747
 Conc: 46.26 ng/ml



#11 alpha-Chlordane

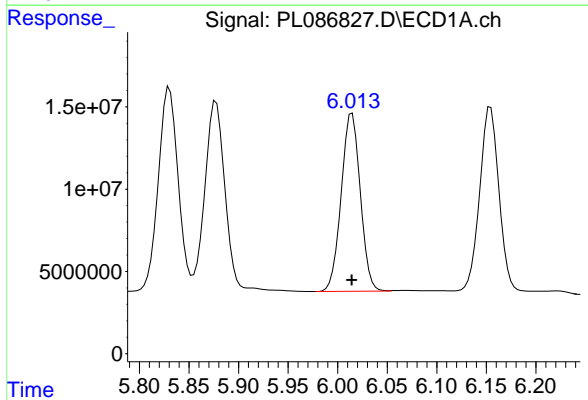
R.T.: 5.830 min
 Delta R.T.: 0.000 min
 Response: 173276785
 Conc: 42.68 ng/ml

Instrument :
 ECD_L
 ClientSampleId :



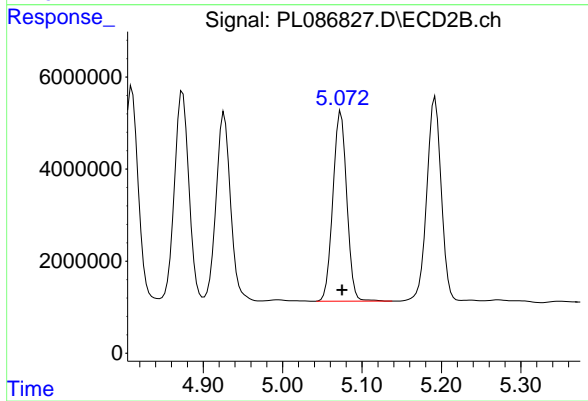
#11 alpha-Chlordane

R.T.: 4.874 min
 Delta R.T.: -0.001 min
 Response: 56634145
 Conc: 45.29 ng/ml



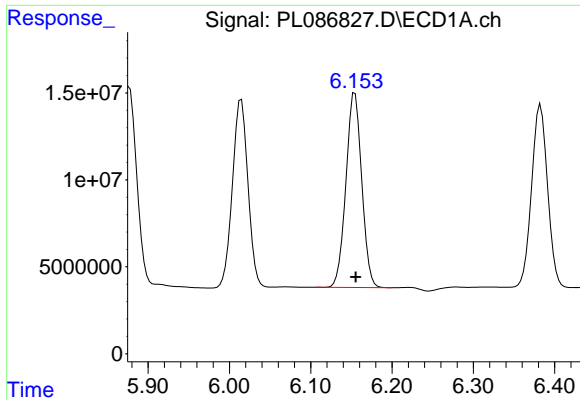
#12 4,4'-DDE

R.T.: 6.015 min
 Delta R.T.: 0.000 min
 Response: 144905761
 Conc: 41.78 ng/ml



#12 4,4'-DDE

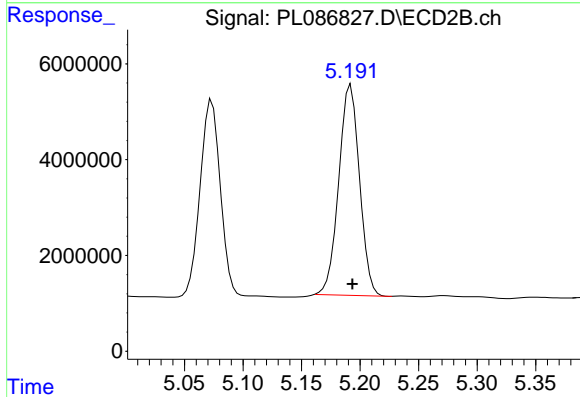
R.T.: 5.073 min
 Delta R.T.: -0.002 min
 Response: 50089829
 Conc: 48.80 ng/ml



#13 Dieldrin

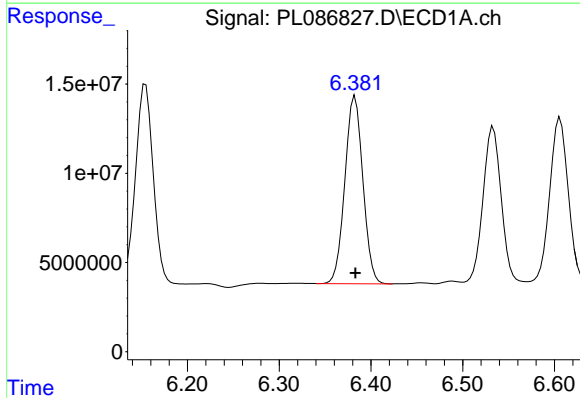
R.T.: 6.154 min
 Delta R.T.: 0.000 min
 Response: 150541563
 Conc: 38.29 ng/ml

Instrument :
 ECD_L
 ClientSampleId :



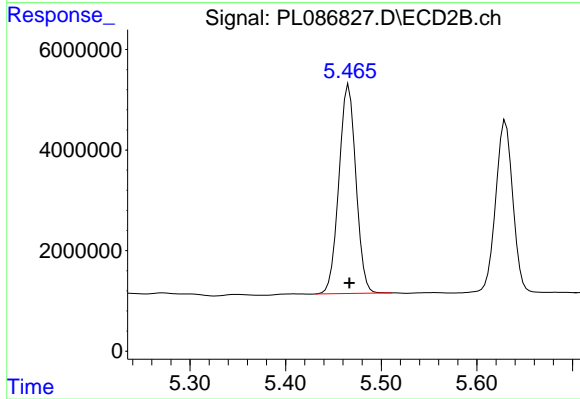
#13 Dieldrin

R.T.: 5.192 min
 Delta R.T.: -0.001 min
 Response: 54258389
 Conc: 45.47 ng/ml



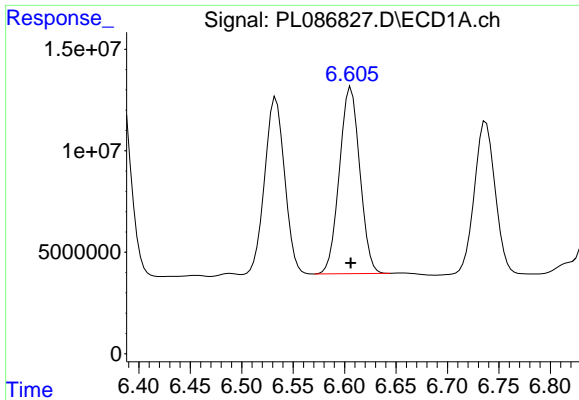
#14 Endrin

R.T.: 6.383 min
 Delta R.T.: 0.000 min
 Response: 143294067
 Conc: 41.60 ng/ml



#14 Endrin

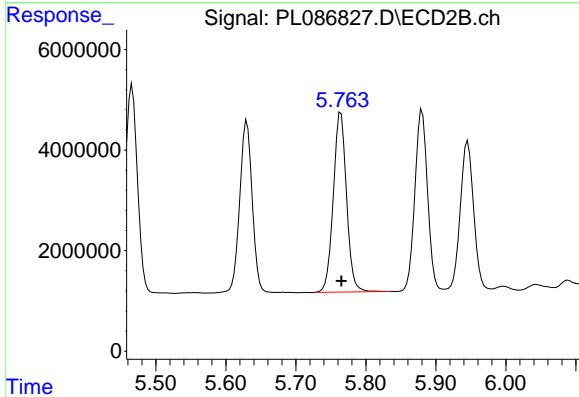
R.T.: 5.466 min
 Delta R.T.: 0.000 min
 Response: 51427881
 Conc: 46.95 ng/ml



#15 Endosulfan II

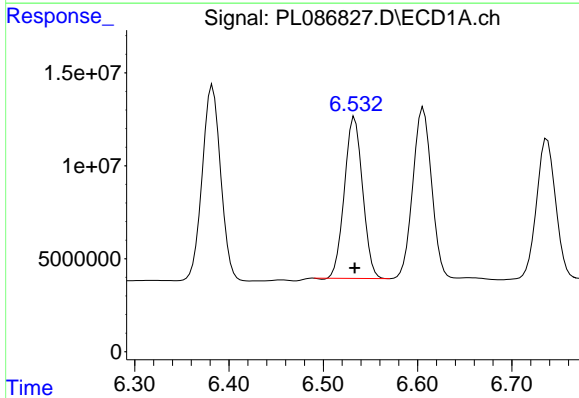
R.T.: 6.606 min
 Delta R.T.: 0.000 min
 Response: 127035889
 Conc: 35.74 ng/ml

Instrument :
 ECD_L
 ClientSampleId :



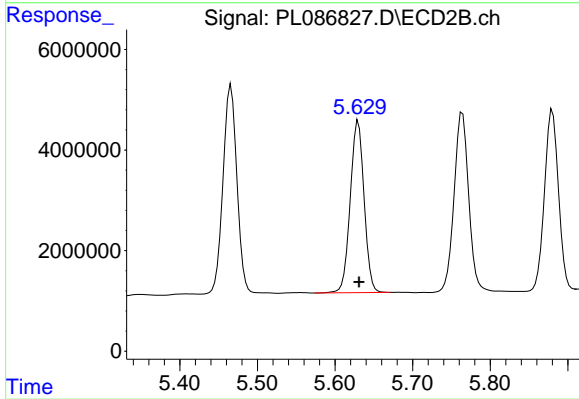
#15 Endosulfan II

R.T.: 5.764 min
 Delta R.T.: 0.000 min
 Response: 46914454
 Conc: 42.74 ng/ml



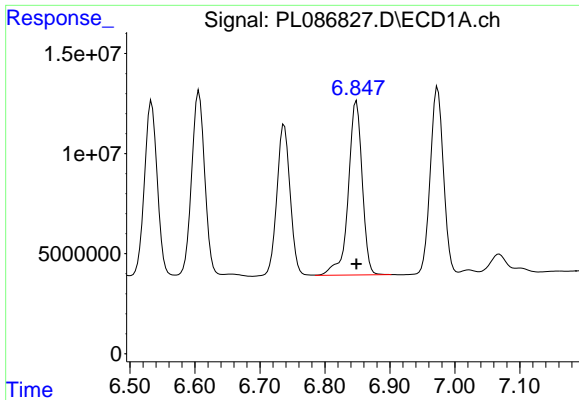
#16 4,4'-DDD

R.T.: 6.533 min
 Delta R.T.: 0.000 min
 Response: 116476249
 Conc: 43.74 ng/ml



#16 4,4'-DDD

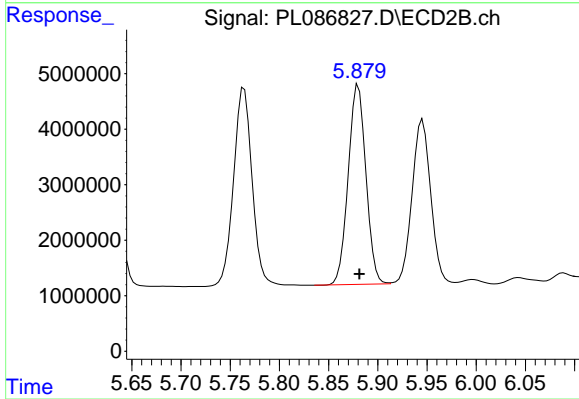
R.T.: 5.630 min
 Delta R.T.: 0.000 min
 Response: 42414228
 Conc: 49.78 ng/ml



#17 4,4'-DDT

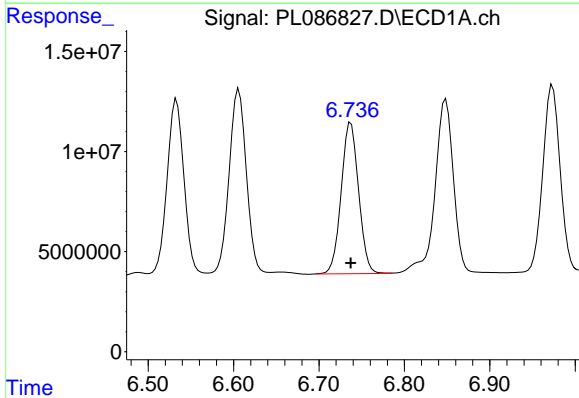
R.T.: 6.849 min
 Delta R.T.: 0.000 min
 Response: 129398969
 Conc: 43.65 ng/ml

Instrument :
 ECD_L
 ClientSampleId :



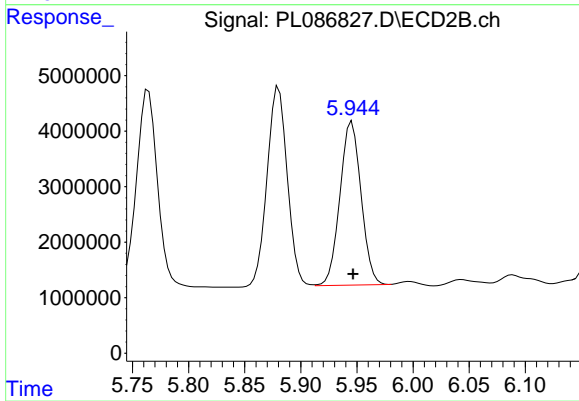
#17 4,4'-DDT

R.T.: 5.880 min
 Delta R.T.: -0.001 min
 Response: 45049966
 Conc: 46.08 ng/ml



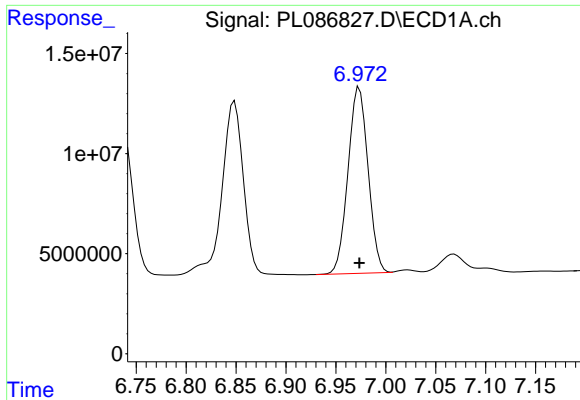
#18 Endrin aldehyde

R.T.: 6.737 min
 Delta R.T.: 0.000 min
 Response: 106869130
 Conc: 40.31 ng/ml



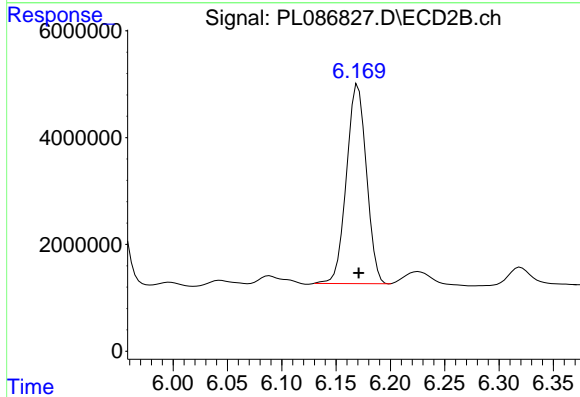
#18 Endrin aldehyde

R.T.: 5.946 min
 Delta R.T.: 0.000 min
 Response: 38623199
 Conc: 41.23 ng/ml

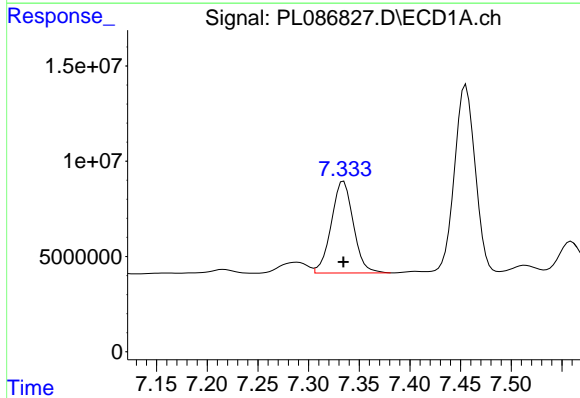


#19 Endosulfan Sulfate
 R.T.: 6.973 min
 Delta R.T.: 0.000 min
 Response: 130083663
 Conc: 38.76 ng/ml

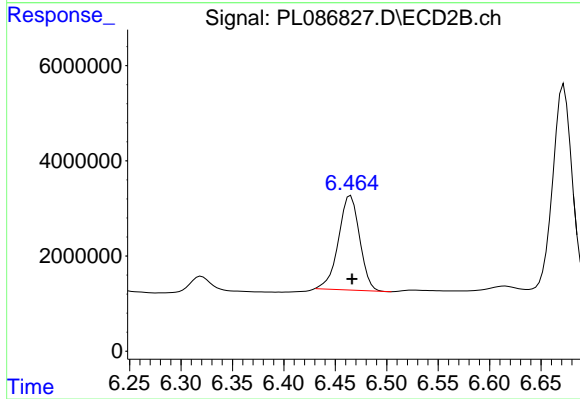
Instrument :
 ECD_L
 ClientSampleId :



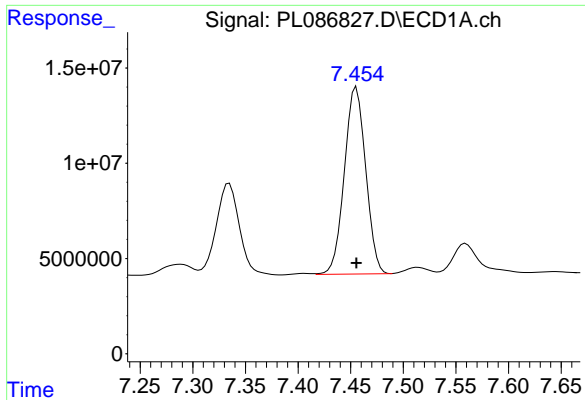
#19 Endosulfan Sulfate
 R.T.: 6.170 min
 Delta R.T.: 0.000 min
 Response: 47795710
 Conc: 44.00 ng/ml



#20 Methoxychlor
 R.T.: 7.335 min
 Delta R.T.: 0.000 min
 Response: 73103791
 Conc: 45.81 ng/ml



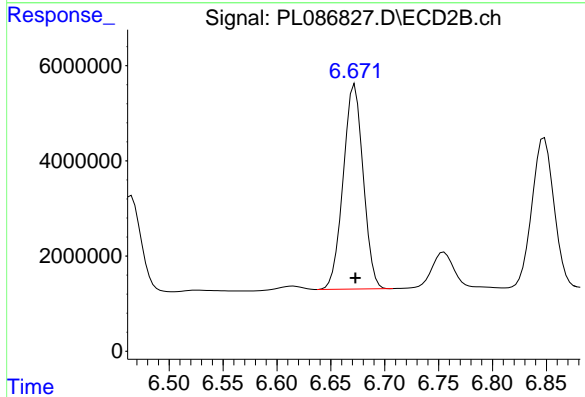
#20 Methoxychlor
 R.T.: 6.465 min
 Delta R.T.: -0.001 min
 Response: 28403709
 Conc: 47.48 ng/ml



#21 Endrin ketone

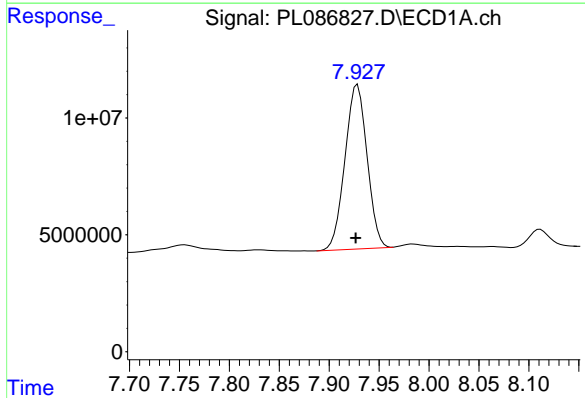
R.T.: 7.455 min
 Delta R.T.: 0.000 min
 Response: 138805432
 Conc: 40.73 ng/ml

Instrument :
 ECD_L
 ClientSampleId :



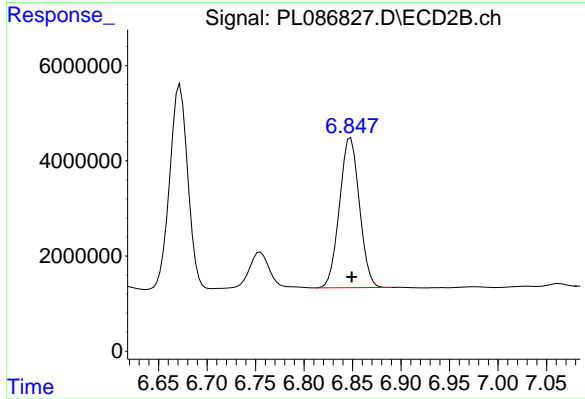
#21 Endrin ketone

R.T.: 6.672 min
 Delta R.T.: 0.000 min
 Response: 55593891
 Conc: 43.39 ng/ml



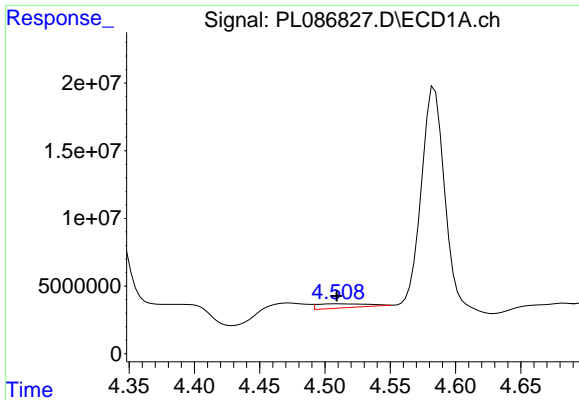
#22 Mirex

R.T.: 7.928 min
 Delta R.T.: 0.002 min
 Response: 108330284
 Conc: 38.36 ng/ml



#22 Mirex

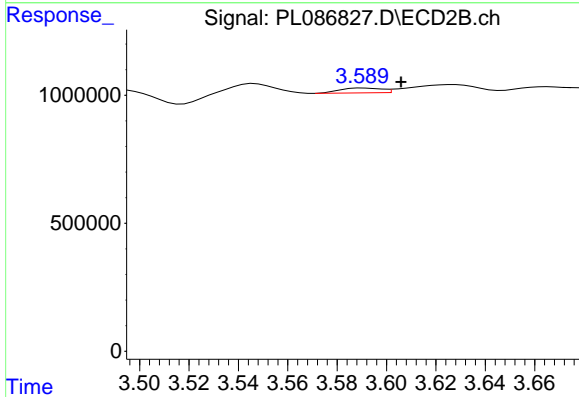
R.T.: 6.848 min
 Delta R.T.: -0.001 min
 Response: 45001745
 Conc: 39.59 ng/ml



#23 Chlordane-1

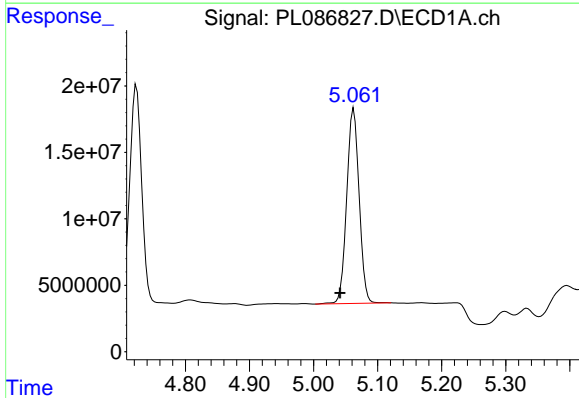
R.T.: 4.509 min
 Delta R.T.: 0.000 min
 Response: 8354953
 Conc: 59.72 ng/ml

Instrument :
 ECD_L
 ClientSampleId :



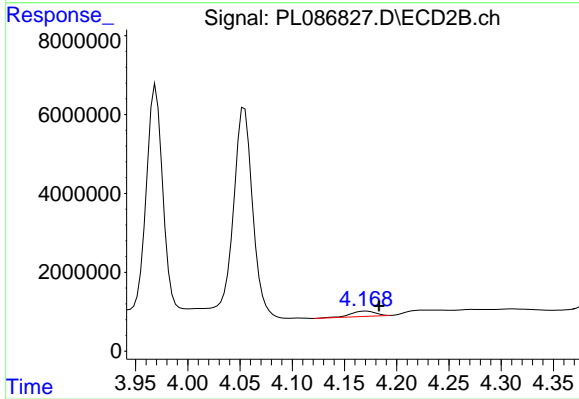
#23 Chlordane-1

R.T.: 3.590 min
 Delta R.T.: -0.015 min
 Response: 225731
 Conc: 6.44 ng/ml



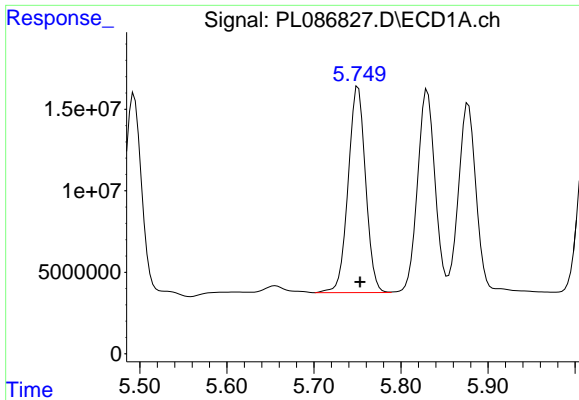
#24 Chlordane-2

R.T.: 5.063 min
 Delta R.T.: 0.021 min
 Response: 197041643
 Conc: 1300.00 ng/ml



#24 Chlordane-2

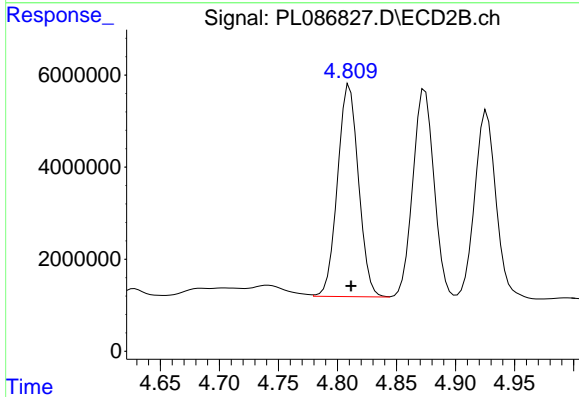
R.T.: 4.171 min
 Delta R.T.: -0.012 min
 Response: 2192322
 Conc: 48.54 ng/ml



#25 Chlordane-3

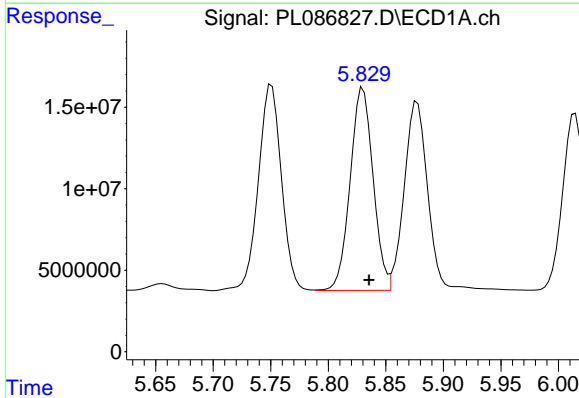
R.T.: 5.751 min
Delta R.T.: -0.002 min
Response: 175975105
Conc: 304.22 ng/ml

Instrument :
ECD_L
ClientSampleId :



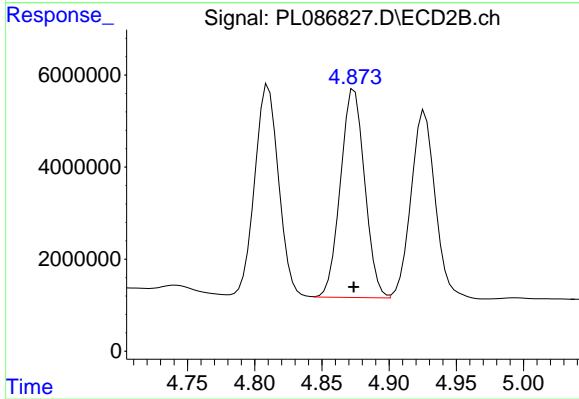
#25 Chlordane-3

R.T.: 4.810 min
Delta R.T.: -0.001 min
Response: 57077747
Conc: 484.07 ng/ml



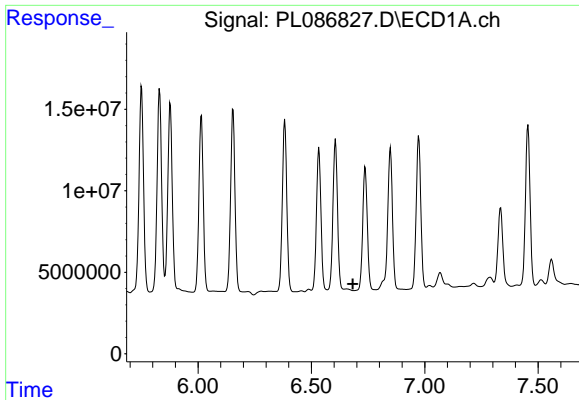
#26 Chlordane-4

R.T.: 5.830 min
Delta R.T.: -0.005 min
Response: 173276785
Conc: 242.37 ng/ml



#26 Chlordane-4

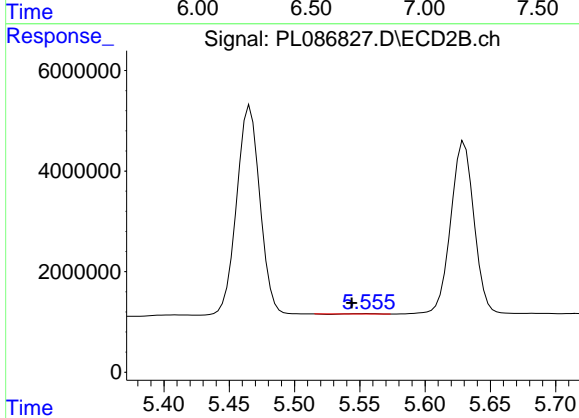
R.T.: 4.874 min
Delta R.T.: 0.000 min
Response: 56634145
Conc: 443.58 ng/ml



#27 Chlordane-5

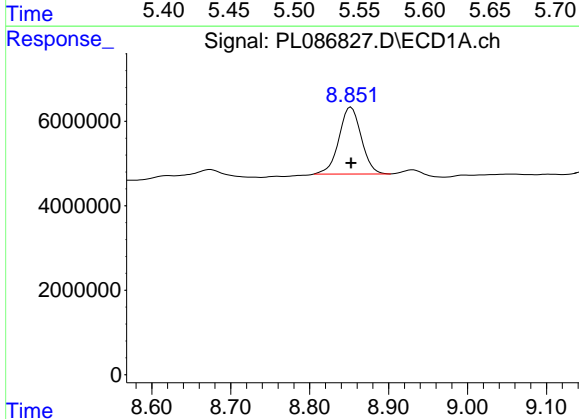
R.T.: 0.000 min
 Exp R.T.: 6.682 min
 Response: 0
 Conc: N.D.

Instrument :
 ECD_L
 ClientSampleId :



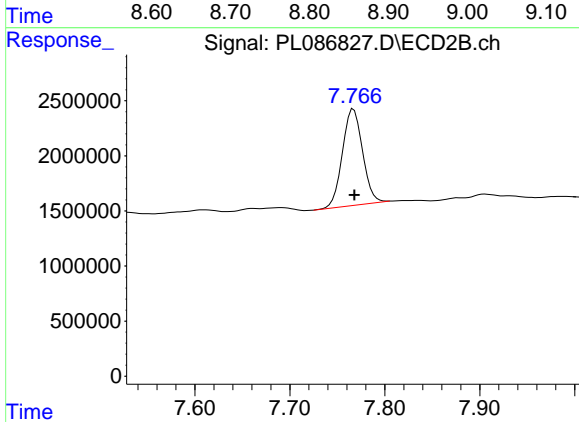
#27 Chlordane-5

R.T.: 5.556 min
 Delta R.T.: 0.012 min
 Response: 25172
 Conc: 0.69 ng/ml



#28 Decachlorobiphenyl

R.T.: 8.852 min
 Delta R.T.: 0.000 min
 Response: 31142667
 Conc: 10.64 ng/ml



#28 Decachlorobiphenyl

R.T.: 7.767 min
 Delta R.T.: 0.000 min
 Response: 12911557
 Conc: 10.69 ng/ml