

Data Path : Z:\pestpcbsrv\HPCHEM1\ECD_L\Data\PL112921\
 Data File : PL071183.D
 Signal(s) : Signal #1: ECD1A.ch Signal #2: ECD2B.ch
 Acq On : 29 Nov 2021 16:54
 Operator : AR\AJ
 Sample : 141039BSD
 Misc :
 ALS Vial : 14 Sample Multiplier: 1

Instrument :
 ECD_L
 ClientSampleId :

Integration File signal 1: autoint1.e
 Integration File signal 2: autoint2.e
 Quant Time: Nov 29 21:04:40 2021
 Quant Method : Z:\pestpcbsrv\HPCHEM1\ECD_L\methods\PL110321.M
 Quant Title : GC Extractables
 QLast Update : Thu Nov 04 19:28:07 2021
 Response via : Initial Calibration
 Integrator: ChemStation

Volume Inj. : 1 µl
 Signal #1 Phase : ZB-MR2 Signal #2 Phase: ZB-MR1
 Signal #1 Info : 30M x 0.32mm x0.2 Signal #2 Info : 30M x 0.32mm x0.5µm

	Compound	RT#1	RT#2	Resp#1	Resp#2	ng/ml	ng/ml

System Monitoring Compounds							
1)	SA Tetrachlo...	4.572	5.499	10434166	25630032	21.303	20.328
28)	SA Decachlor...	10.338	11.398	14304447	24834457	20.934	18.570
Target Compounds							
2)	A alpha-BHC	5.279	6.079	7314766	20268530	10.927	11.011
3)	MA gamma-BHC...	5.701	6.476	7461668	21792894	11.124	12.568
4)	MA Heptachlor	6.109	7.124	8206249	20018288	11.437	12.324
5)	MB Aldrin	6.433	7.494	7384751	18353432	11.548	11.303
6)	B beta-BHC	6.085	6.734	3977046	10195232	12.243	11.899
7)	B delta-BHC	6.344	7.000	7274902	20619780	10.992	12.331
8)	B Heptachlo...	7.011	7.962	8154084	18250026	12.542	11.974
9)	A Endosulfan I	7.413	8.367	7512432	16225385	12.264	11.278
10)	B gamma-Chl...	7.288	8.232	7942087	17543693	11.964	11.331
11)	B alpha-Chl...	7.357	8.312	8073625	17370438	12.116	11.421
12)	B 4,4'-DDE	7.573	8.502	6609220	17525224	11.344	11.877
13)	MA Dieldrin	7.699	8.656	7125661	16428875	11.415	11.275
14)	MA Endrin	7.990	8.895	6912878	14173488	12.193	12.236
15)	B Endosulfa...	8.302	9.130	7001780	14240809	11.567	11.660
16)	A 4,4'-DDD	8.159	9.042	6191583	12812198	12.186	10.646
17)	MA 4,4'-DDT	8.419	9.359	6016971	14058536	10.940	11.144
18)	B Endrin al...	8.491	9.265	5698652	11661697	12.543	12.059
19)	B Endosulfa...	8.722	9.503	7426959	13705939	12.039	11.059
20)	A Methoxychlor	9.015	9.846	4100830	6769928	11.209	10.003
21)	B Endrin ke...	9.240	10.000	8784632	15464770	12.285	10.773
22)	Mirex	9.423	10.465	7971794	11785052	12.981	11.314
24)	Chlordane-2	0.000	7.494f	0	18353432	N.D.	349.890 #
25)	Chlordane-3	7.288	8.232	7942087	17543693	130.085	86.795 #
26)	Chlordane-4	7.357	8.312	8073625	17370438	122.979	71.580 #
27)	Chlordane-5	8.302	0.000	7001780	0	313.168	N.D. #

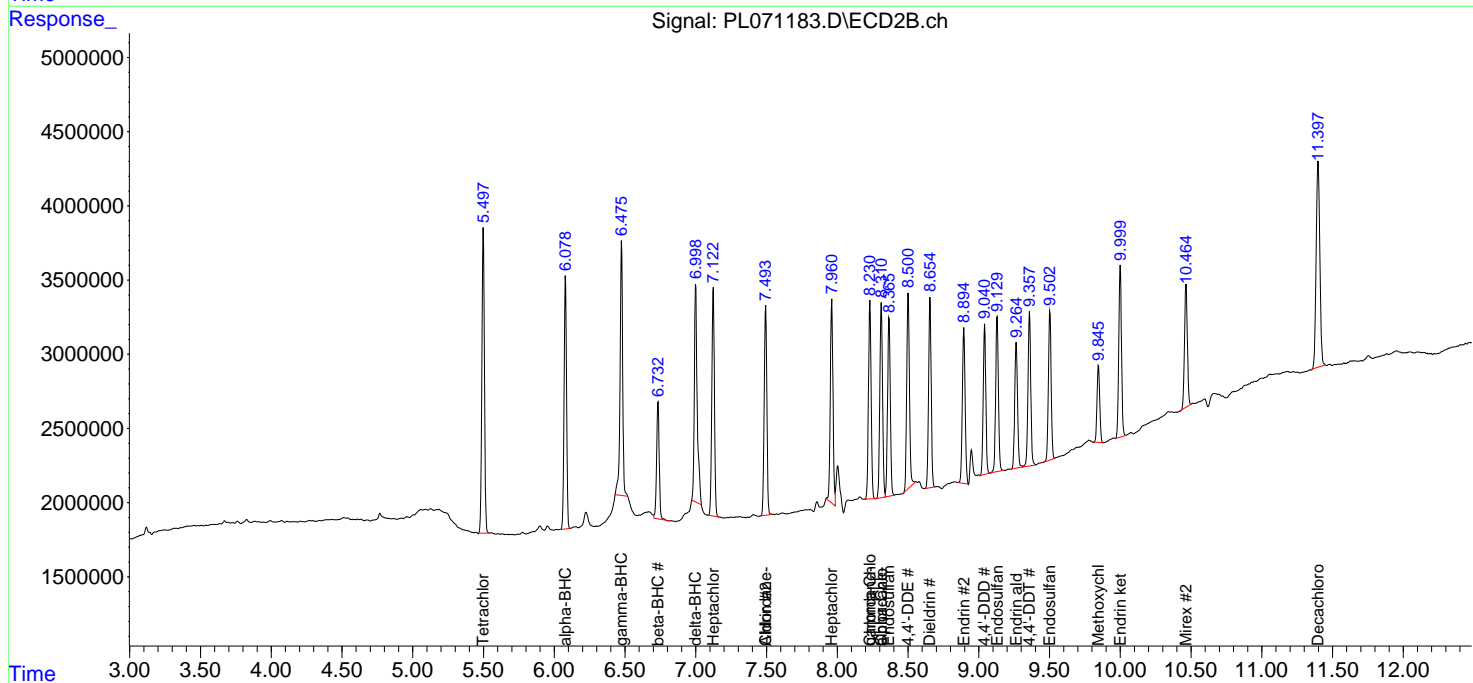
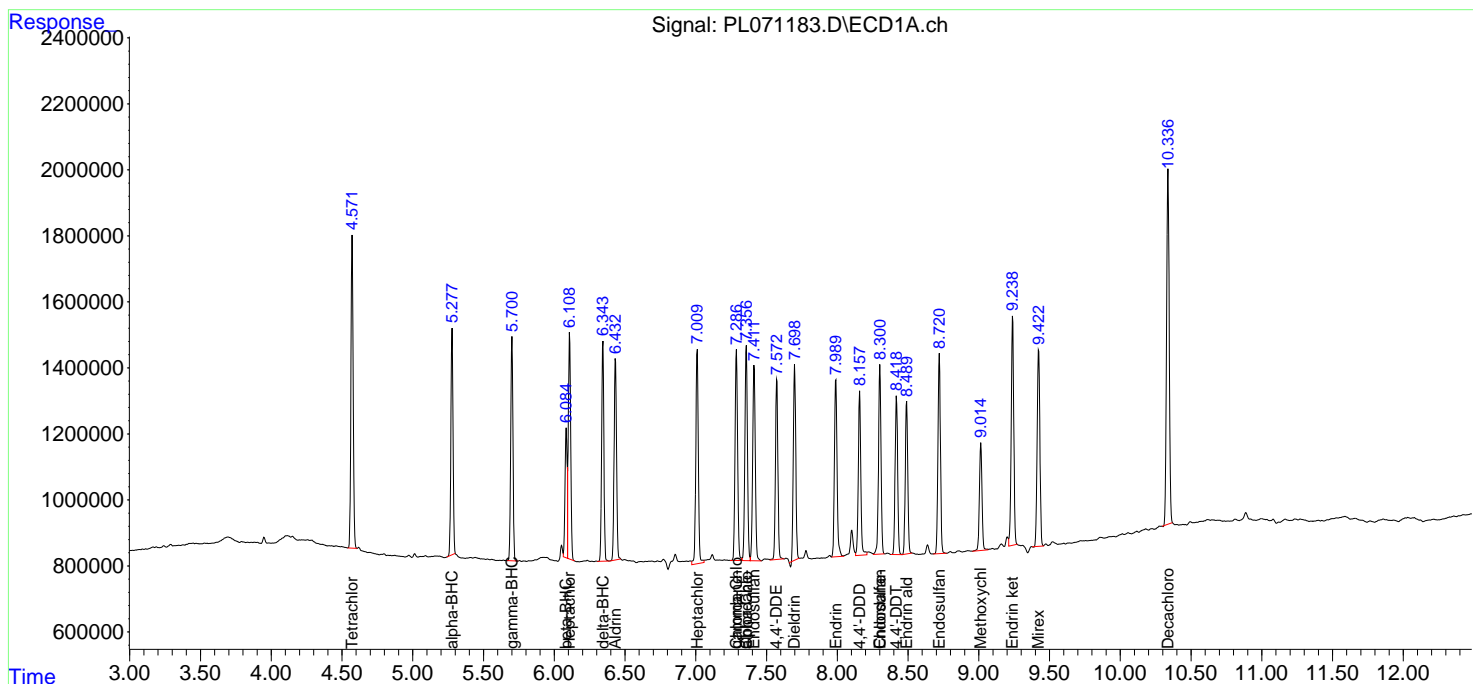
(f)=RT Delta > 1/2 Window (#)=Amounts differ by > 25% (m)=manual int.

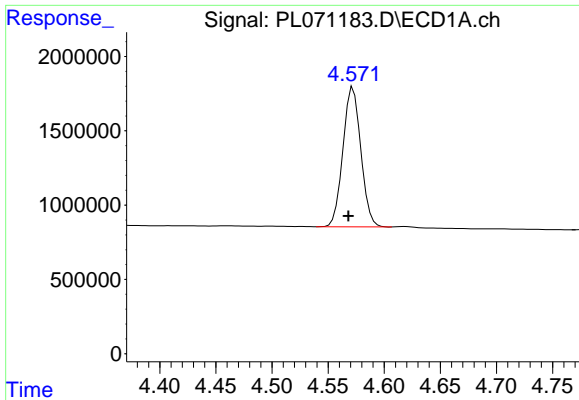
Data Path : Z:\pestpcbsrv\HPCHEM1\ECD_L\Data\PL112921\
 Data File : PL071183.D
 Signal(s) : Signal #1: ECD1A.ch Signal #2: ECD2B.ch
 Acq On : 29 Nov 2021 16:54
 Operator : AR\AJ
 Sample : 141039BSD
 Misc :
 ALS Vial : 14 Sample Multiplier: 1

Instrument :
 ECD_L
 ClientSampleId :

Integration File signal 1: autoint1.e
 Integration File signal 2: autoint2.e
 Quant Time: Nov 29 21:04:40 2021
 Quant Method : Z:\pestpcbsrv\HPCHEM1\ECD_L\methods\PL110321.M
 Quant Title : GC Extractables
 QLast Update : Thu Nov 04 19:28:07 2021
 Response via : Initial Calibration
 Integrator: ChemStation

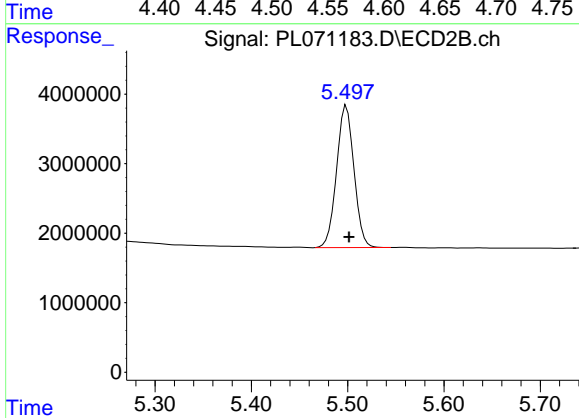
Volume Inj. : 1 µl
 Signal #1 Phase : ZB-MR2 Signal #2 Phase: ZB-MR1
 Signal #1 Info : 30M x 0.32mm x0.2 Signal #2 Info : 30M x 0.32mm x0.5µm



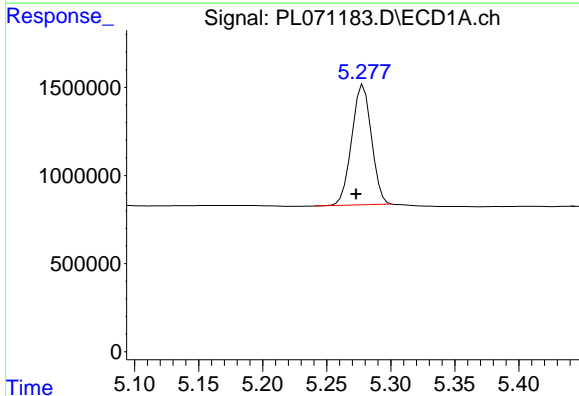


#1 Tetrachloro-m-xylene
 R.T.: 4.572 min
 Delta R.T.: 0.004 min
 Response: 10434166
 Conc: 21.30 ng/ml

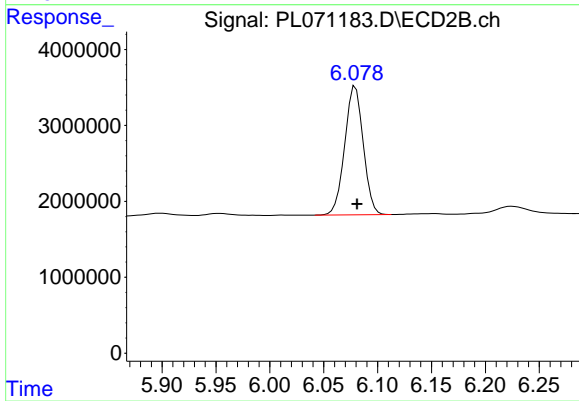
Instrument :
 ECD_L
 ClientSampleId :



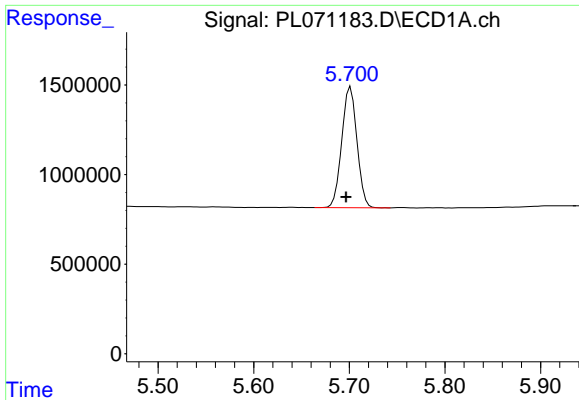
#1 Tetrachloro-m-xylene
 R.T.: 5.499 min
 Delta R.T.: -0.002 min
 Response: 25630032
 Conc: 20.33 ng/ml



#2 alpha-BHC
 R.T.: 5.279 min
 Delta R.T.: 0.006 min
 Response: 7314766
 Conc: 10.93 ng/ml

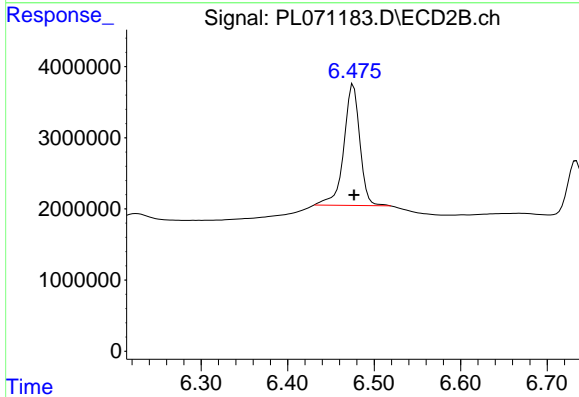


#2 alpha-BHC
 R.T.: 6.079 min
 Delta R.T.: -0.002 min
 Response: 20268530
 Conc: 11.01 ng/ml

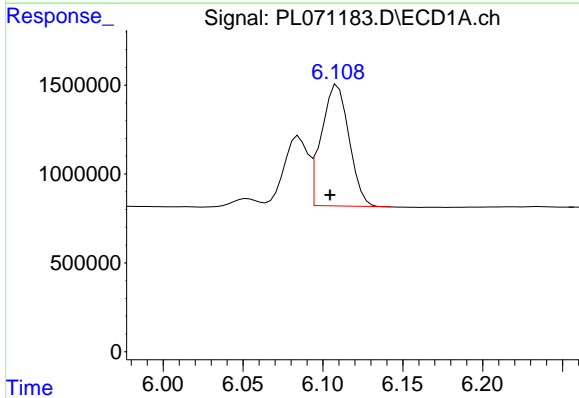


#3 gamma-BHC (Lindane)
 R.T.: 5.701 min
 Delta R.T.: 0.005 min
 Response: 7461668
 Conc: 11.12 ng/ml

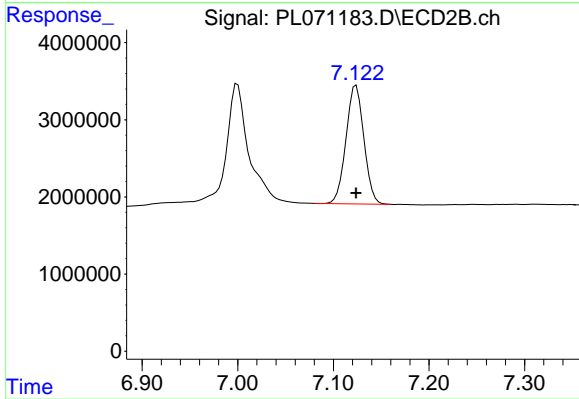
Instrument :
 ECD_L
 ClientSampleId :



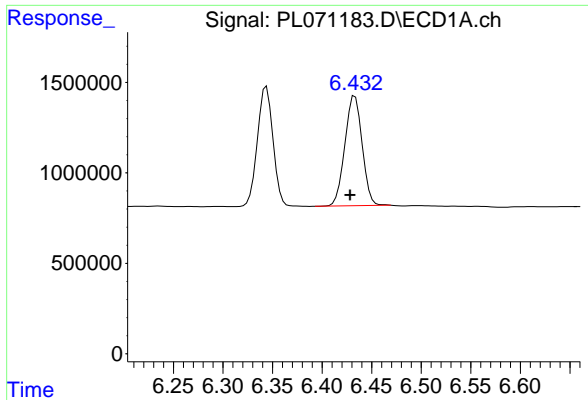
#3 gamma-BHC (Lindane)
 R.T.: 6.476 min
 Delta R.T.: 0.000 min
 Response: 21792894
 Conc: 12.57 ng/ml



#4 Heptachlor
 R.T.: 6.109 min
 Delta R.T.: 0.005 min
 Response: 8206249
 Conc: 11.44 ng/ml

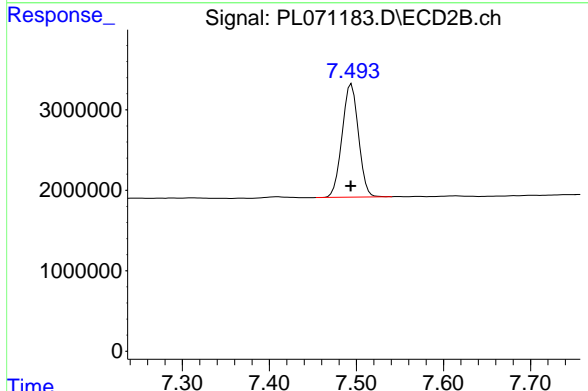


#4 Heptachlor
 R.T.: 7.124 min
 Delta R.T.: 0.000 min
 Response: 20018288
 Conc: 12.32 ng/ml

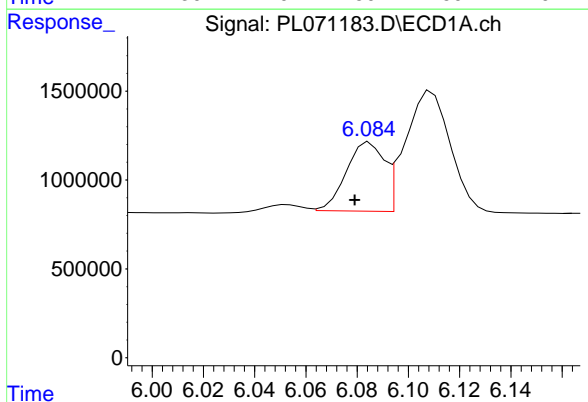


#5 Aldrin
 R.T.: 6.433 min
 Delta R.T.: 0.005 min
 Response: 7384751
 Conc: 11.55 ng/ml

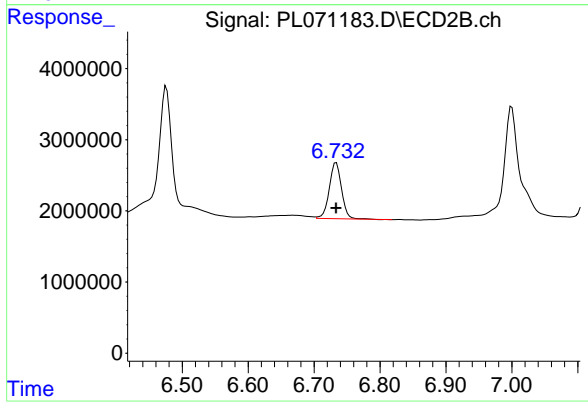
Instrument :
 ECD_L
 ClientSampleId :



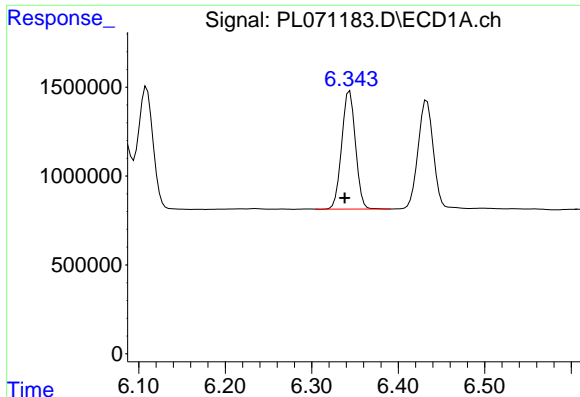
#5 Aldrin
 R.T.: 7.494 min
 Delta R.T.: 0.000 min
 Response: 18353432
 Conc: 11.30 ng/ml



#6 beta-BHC
 R.T.: 6.085 min
 Delta R.T.: 0.006 min
 Response: 3977046
 Conc: 12.24 ng/ml



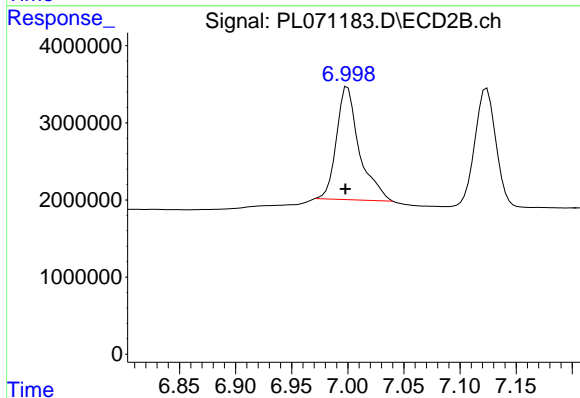
#6 beta-BHC
 R.T.: 6.734 min
 Delta R.T.: 0.000 min
 Response: 10195232
 Conc: 11.90 ng/ml



#7 delta-BHC

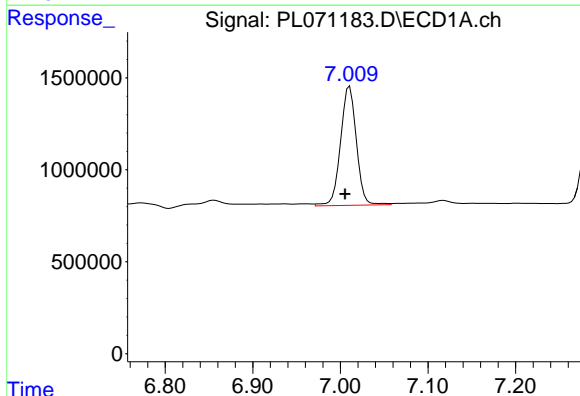
R.T.: 6.344 min
 Delta R.T.: 0.006 min
 Response: 7274902
 Conc: 10.99 ng/ml

Instrument :
 ECD_L
 ClientSampleId :



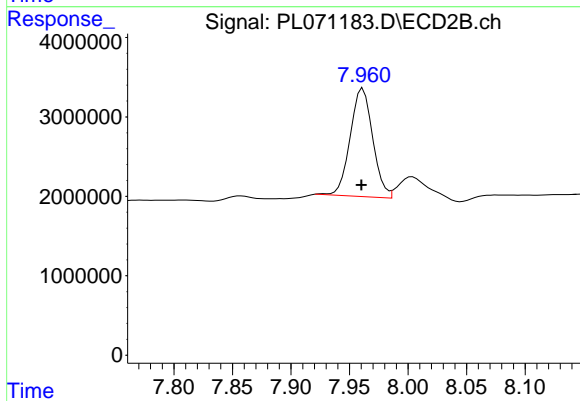
#7 delta-BHC

R.T.: 7.000 min
 Delta R.T.: 0.002 min
 Response: 20619780
 Conc: 12.33 ng/ml



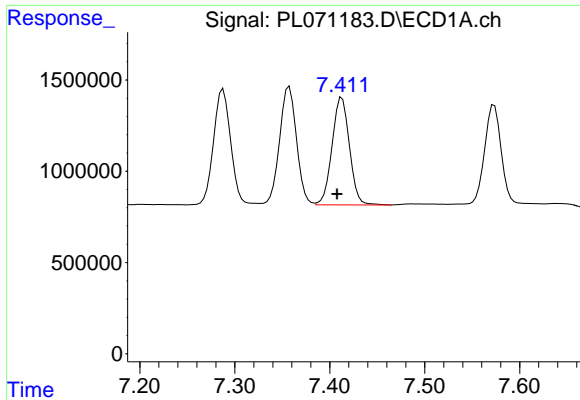
#8 Heptachlor epoxide

R.T.: 7.011 min
 Delta R.T.: 0.005 min
 Response: 8154084
 Conc: 12.54 ng/ml



#8 Heptachlor epoxide

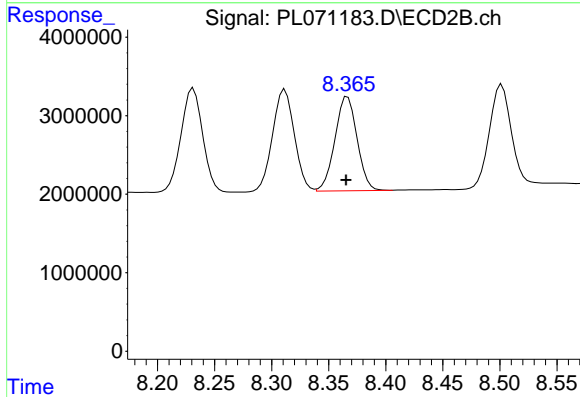
R.T.: 7.962 min
 Delta R.T.: 0.001 min
 Response: 18250026
 Conc: 11.97 ng/ml



#9 Endosulfan I

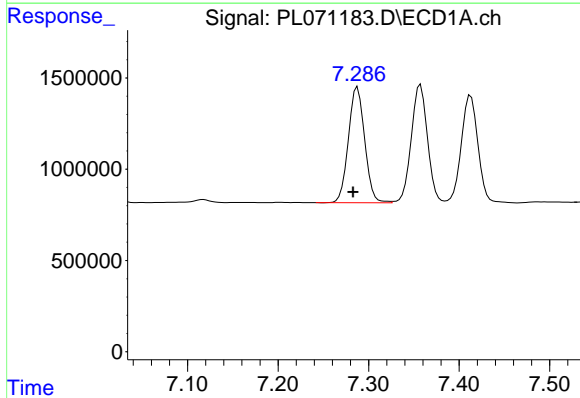
R.T.: 7.413 min
 Delta R.T.: 0.005 min
 Response: 7512432
 Conc: 12.26 ng/ml

Instrument :
 ECD_L
 ClientSampleId :



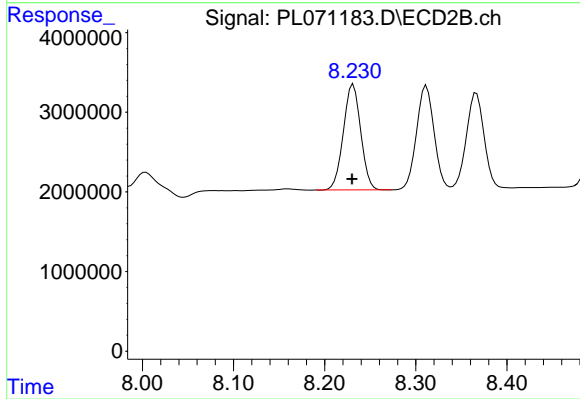
#9 Endosulfan I

R.T.: 8.367 min
 Delta R.T.: 0.001 min
 Response: 16225385
 Conc: 11.28 ng/ml



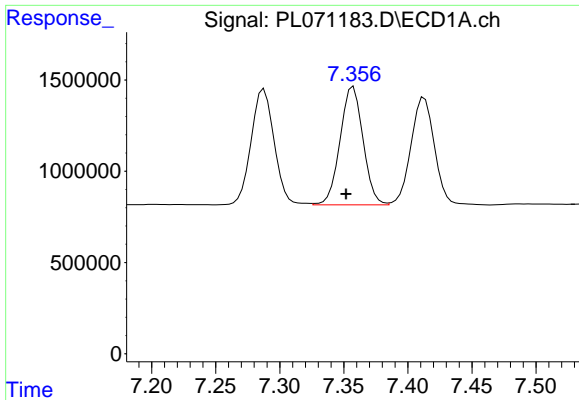
#10 gamma-Chlordane

R.T.: 7.288 min
 Delta R.T.: 0.005 min
 Response: 7942087
 Conc: 11.96 ng/ml



#10 gamma-Chlordane

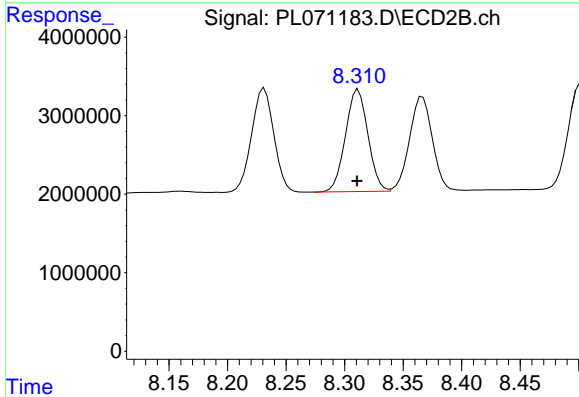
R.T.: 8.232 min
 Delta R.T.: 0.002 min
 Response: 17543693
 Conc: 11.33 ng/ml



#11 alpha-Chlordane

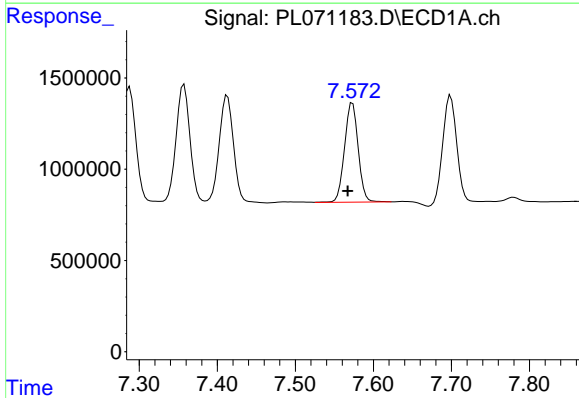
R.T.: 7.357 min
 Delta R.T.: 0.006 min
 Response: 8073625
 Conc: 12.12 ng/ml

Instrument :
 ECD_L
 ClientSampleId :



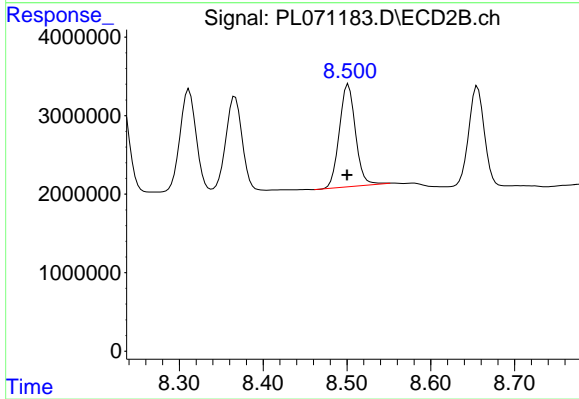
#11 alpha-Chlordane

R.T.: 8.312 min
 Delta R.T.: 0.000 min
 Response: 17370438
 Conc: 11.42 ng/ml



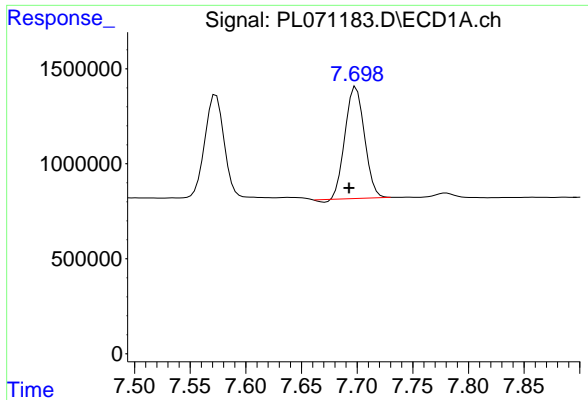
#12 4,4'-DDE

R.T.: 7.573 min
 Delta R.T.: 0.006 min
 Response: 6609220
 Conc: 11.34 ng/ml



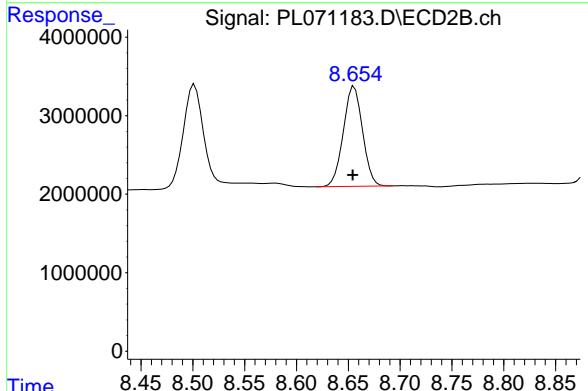
#12 4,4'-DDE

R.T.: 8.502 min
 Delta R.T.: 0.001 min
 Response: 17525224
 Conc: 11.88 ng/ml

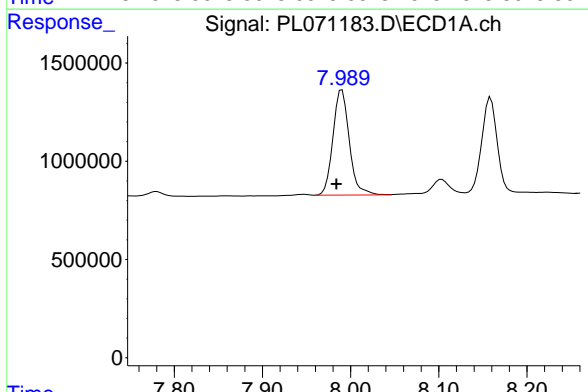


#13 Dieldrin
 R.T.: 7.699 min
 Delta R.T.: 0.006 min
 Response: 7125661
 Conc: 11.42 ng/ml

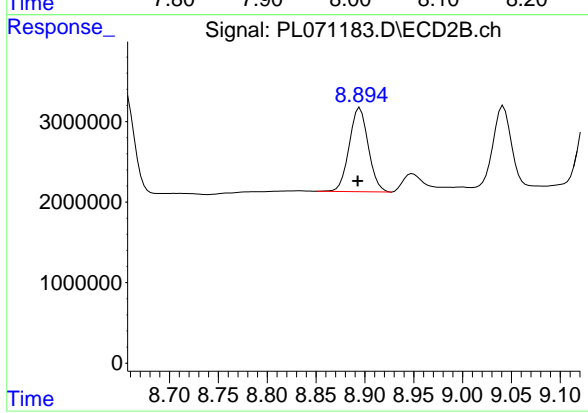
Instrument :
 ECD_L
 ClientSampleId :



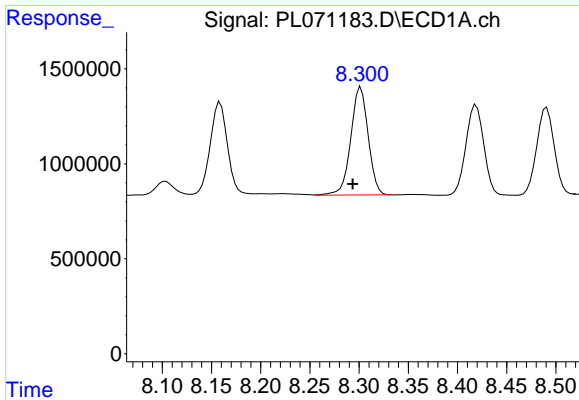
#13 Dieldrin
 R.T.: 8.656 min
 Delta R.T.: 0.002 min
 Response: 16428875
 Conc: 11.27 ng/ml



#14 Endrin
 R.T.: 7.990 min
 Delta R.T.: 0.006 min
 Response: 6912878
 Conc: 12.19 ng/ml



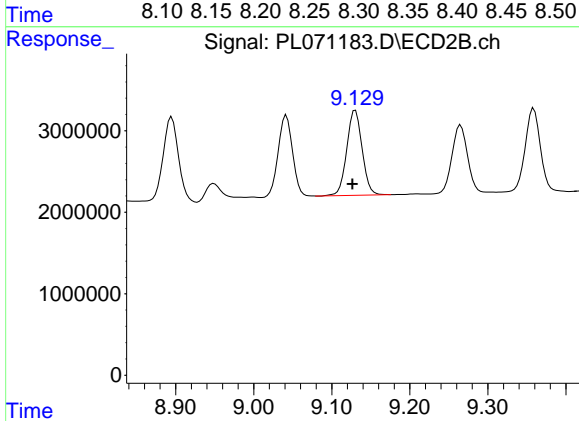
#14 Endrin
 R.T.: 8.895 min
 Delta R.T.: 0.002 min
 Response: 14173488
 Conc: 12.24 ng/ml



#15 Endosulfan II

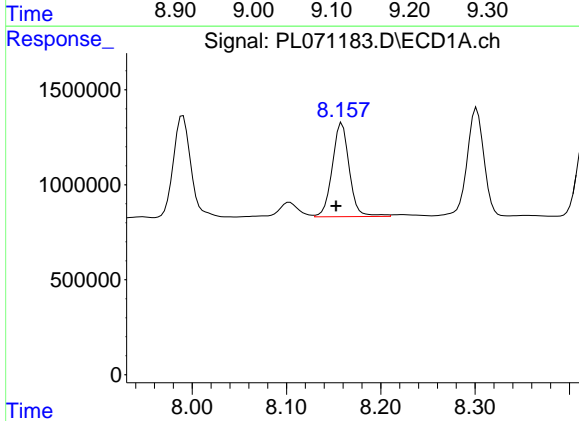
R.T.: 8.302 min
 Delta R.T.: 0.008 min
 Response: 7001780
 Conc: 11.57 ng/ml

Instrument :
 ECD_L
 ClientSampleId :



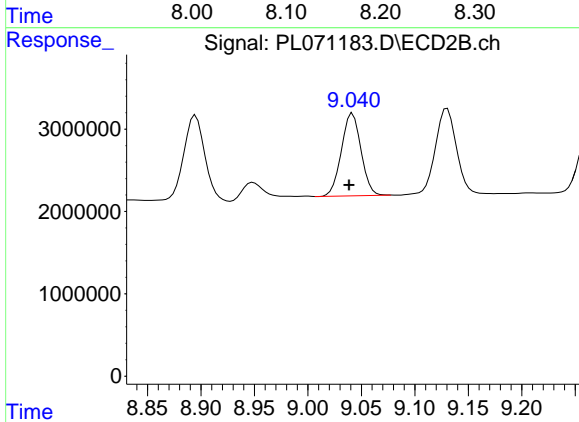
#15 Endosulfan II

R.T.: 9.130 min
 Delta R.T.: 0.004 min
 Response: 14240809
 Conc: 11.66 ng/ml



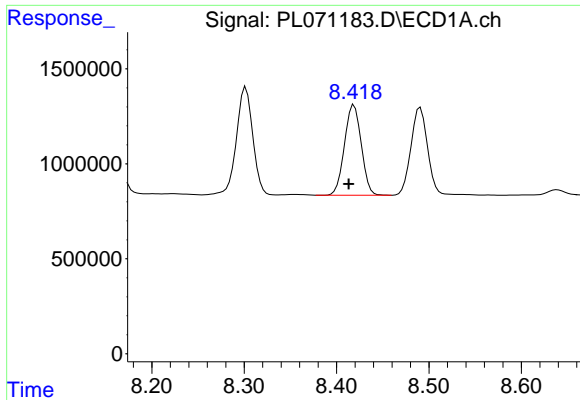
#16 4,4'-DDD

R.T.: 8.159 min
 Delta R.T.: 0.006 min
 Response: 6191583
 Conc: 12.19 ng/ml



#16 4,4'-DDD

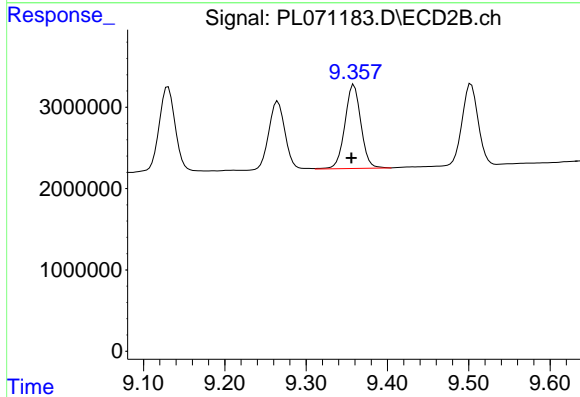
R.T.: 9.042 min
 Delta R.T.: 0.003 min
 Response: 12812198
 Conc: 10.65 ng/ml



#17 4,4'-DDT

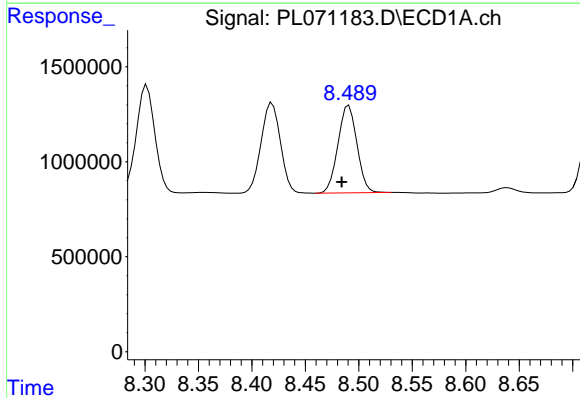
R.T.: 8.419 min
 Delta R.T.: 0.006 min
 Response: 6016971
 Conc: 10.94 ng/ml

Instrument :
 ECD_L
 ClientSampleId :



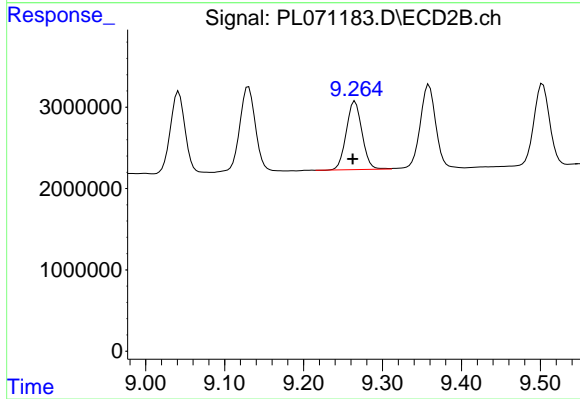
#17 4,4'-DDT

R.T.: 9.359 min
 Delta R.T.: 0.003 min
 Response: 14058536
 Conc: 11.14 ng/ml



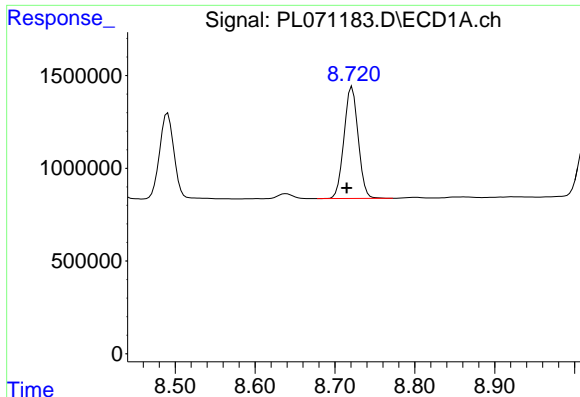
#18 Endrin aldehyde

R.T.: 8.491 min
 Delta R.T.: 0.007 min
 Response: 5698652
 Conc: 12.54 ng/ml



#18 Endrin aldehyde

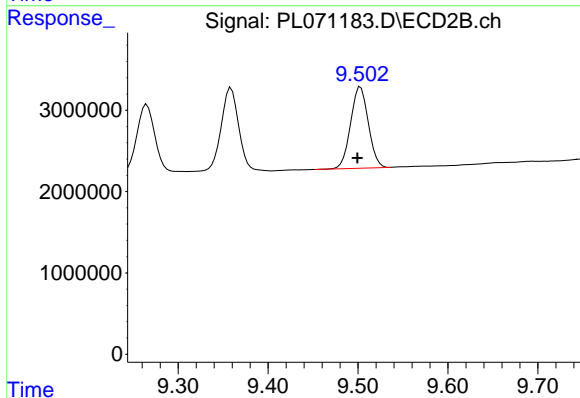
R.T.: 9.265 min
 Delta R.T.: 0.003 min
 Response: 11661697
 Conc: 12.06 ng/ml



#19 Endosulfan Sulfate

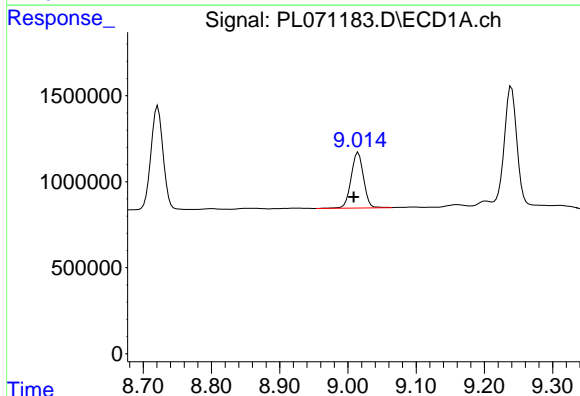
R.T.: 8.722 min
 Delta R.T.: 0.007 min
 Response: 7426959
 Conc: 12.04 ng/ml

Instrument :
 ECD_L
 ClientSampleId :



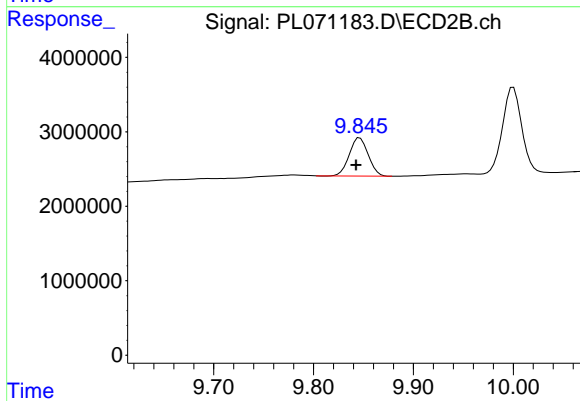
#19 Endosulfan Sulfate

R.T.: 9.503 min
 Delta R.T.: 0.003 min
 Response: 13705939
 Conc: 11.06 ng/ml



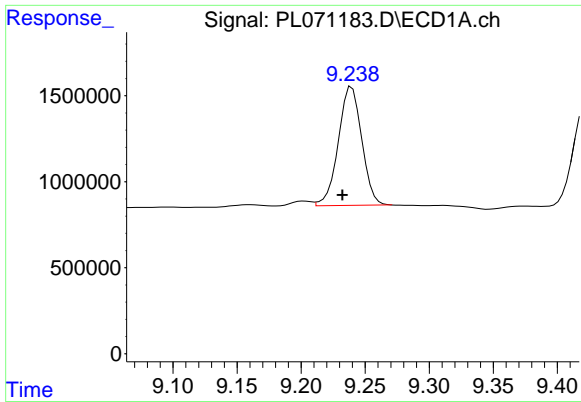
#20 Methoxychlor

R.T.: 9.015 min
 Delta R.T.: 0.006 min
 Response: 4100830
 Conc: 11.21 ng/ml



#20 Methoxychlor

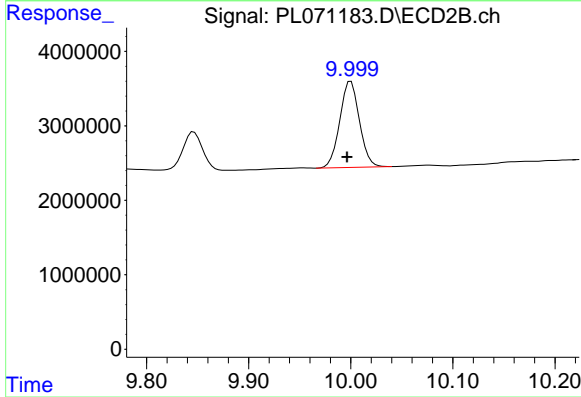
R.T.: 9.846 min
 Delta R.T.: 0.004 min
 Response: 6769928
 Conc: 10.00 ng/ml



#21 Endrin ketone

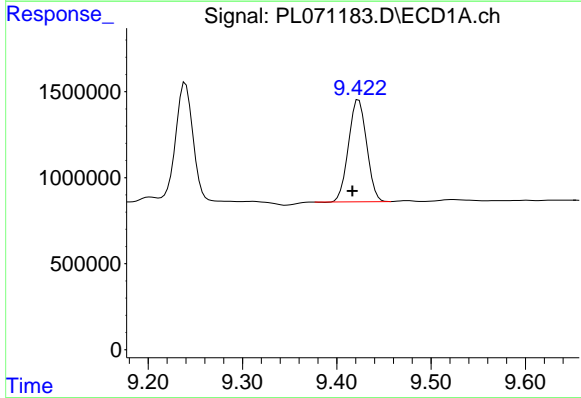
R.T.: 9.240 min
 Delta R.T.: 0.007 min
 Response: 8784632
 Conc: 12.29 ng/ml

Instrument :
 ECD_L
 ClientSampleId :



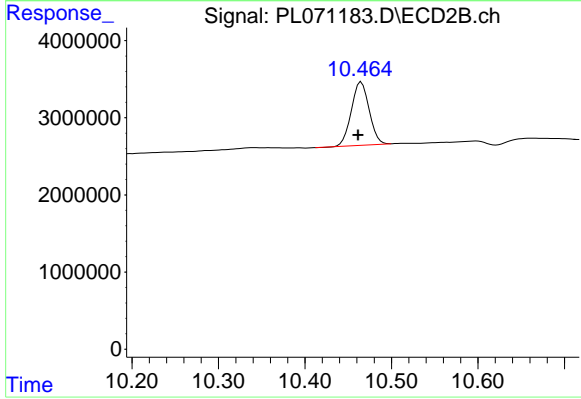
#21 Endrin ketone

R.T.: 10.000 min
 Delta R.T.: 0.004 min
 Response: 15464770
 Conc: 10.77 ng/ml



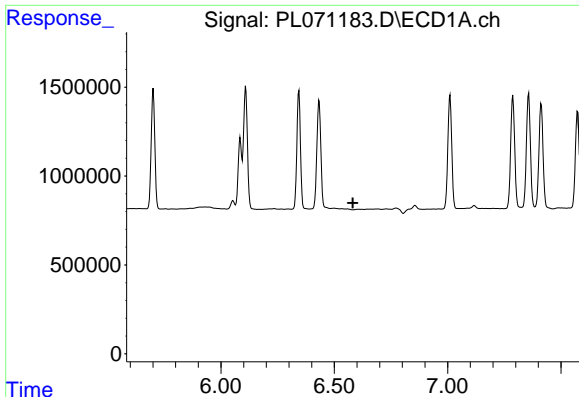
#22 Mirex

R.T.: 9.423 min
 Delta R.T.: 0.006 min
 Response: 7971794
 Conc: 12.98 ng/ml



#22 Mirex

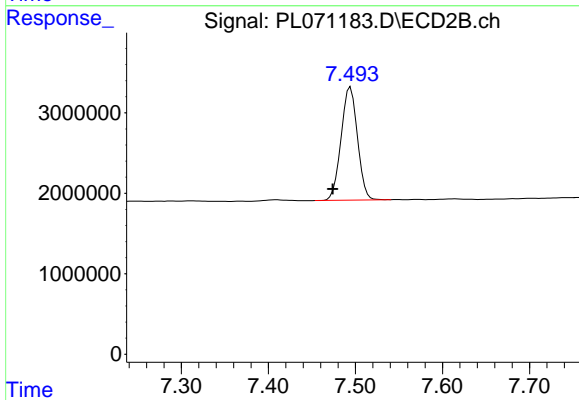
R.T.: 10.465 min
 Delta R.T.: 0.004 min
 Response: 11785052
 Conc: 11.31 ng/ml



#24 Chlordane-2

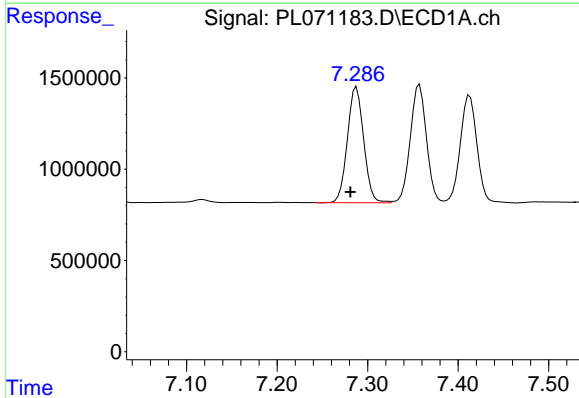
R.T.: 0.000 min
 Exp R.T.: 6.582 min
 Response: 0
 Conc: N.D.

Instrument :
 ECD_L
 ClientSampleId :



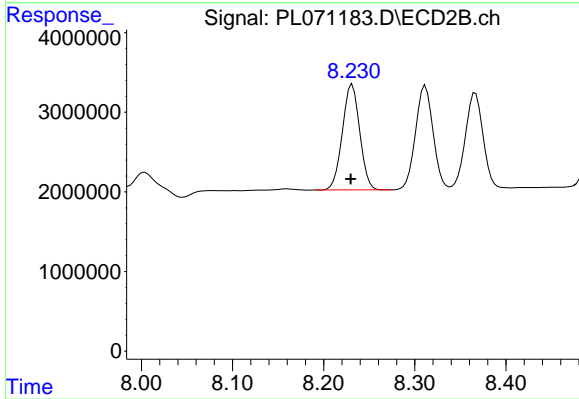
#24 Chlordane-2

R.T.: 7.494 min
 Delta R.T.: 0.020 min
 Response: 18353432
 Conc: 349.89 ng/ml



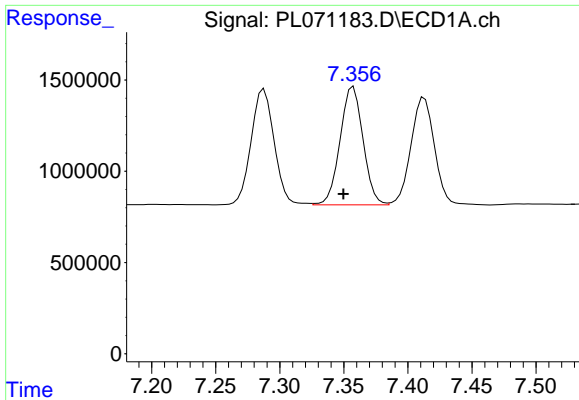
#25 Chlordane-3

R.T.: 7.288 min
 Delta R.T.: 0.007 min
 Response: 7942087
 Conc: 130.09 ng/ml



#25 Chlordane-3

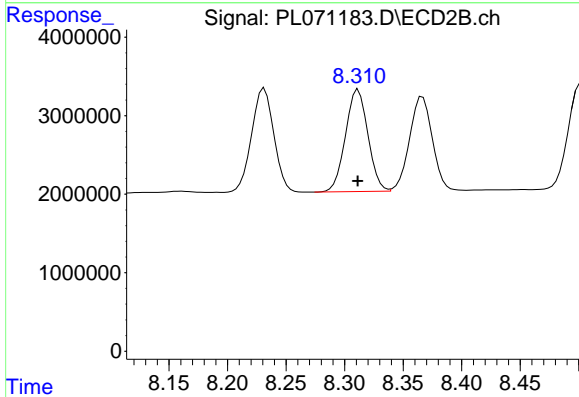
R.T.: 8.232 min
 Delta R.T.: 0.002 min
 Response: 17543693
 Conc: 86.79 ng/ml



#26 Chlordane-4

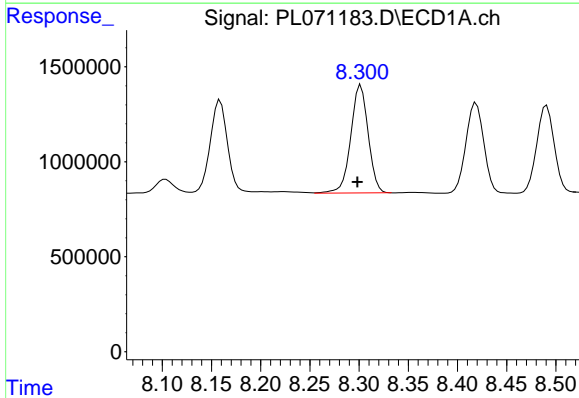
R.T.: 7.357 min
 Delta R.T.: 0.008 min
 Response: 8073625
 Conc: 122.98 ng/ml

Instrument :
 ECD_L
 ClientSampleId :



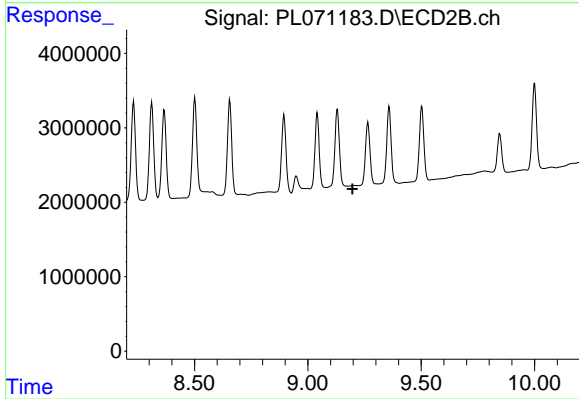
#26 Chlordane-4

R.T.: 8.312 min
 Delta R.T.: 0.000 min
 Response: 17370438
 Conc: 71.58 ng/ml



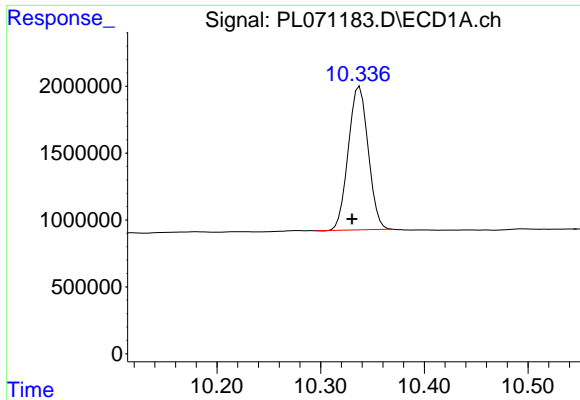
#27 Chlordane-5

R.T.: 8.302 min
 Delta R.T.: 0.004 min
 Response: 7001780
 Conc: 313.17 ng/ml



#27 Chlordane-5

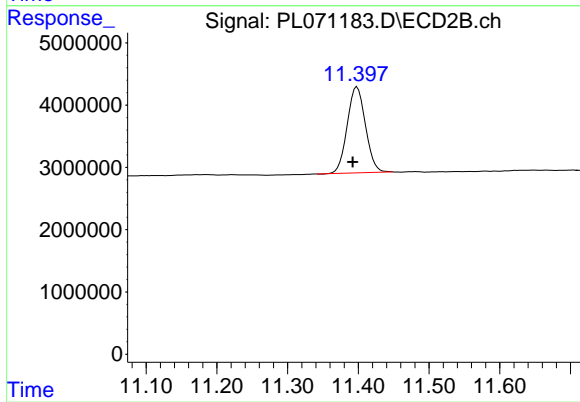
R.T.: 0.000 min
 Exp R.T. : 9.197 min
 Response: 0
 Conc: N.D.



#28 Decachlorobiphenyl

R.T.: 10.338 min
Delta R.T.: 0.007 min
Response: 14304447
Conc: 20.93 ng/ml

Instrument :
ECD_L
ClientSampleId :



#28 Decachlorobiphenyl

R.T.: 11.398 min
Delta R.T.: 0.006 min
Response: 24834457
Conc: 18.57 ng/ml