

Data Path : Z:\pestpcbsrv\HPCHEM1\ECD_L\Data\PL112922\
 Data File : PL079482.D
 Signal(s) : Signal #1: ECD1A.ch Signal #2: ECD2B.ch
 Acq On : 29 Nov 2022 17:23
 Operator : AR\AJ
 Sample : N5787-01MSD
 Misc :
 ALS Vial : 9 Sample Multiplier: 1

Instrument :
 ECD_L
ClientSampleId :
 SB-24-STOCKMSD

Manual Integrations
APPROVED

Reviewed By :Abdul Mirza 11/30/2022
 Supervised By :Ankita Jodhani 11/30/2022

Integration File signal 1: autoint1.e
 Integration File signal 2: autoint2.e
 Quant Time: Nov 29 20:41:17 2022
 Quant Method : Z:\pestpcbsrv\HPCHEM1\ECD_L\methods\PL112322.M
 Quant Title : GC Extractables
 QLast Update : Thu Nov 24 00:09:49 2022
 Response via : Initial Calibration
 Integrator: ChemStation

Volume Inj. : 1 µl
 Signal #1 Phase : ZB-MR2 Signal #2 Phase: ZB-MR1
 Signal #1 Info : 30M x 0.32mm x0.2 Signal #2 Info : 30M x 0.32mm x0.5µm

Compound	RT#1	RT#2	Resp#1	Resp#2	ng/ml	ng/ml

System Monitoring Compounds						
1) SA Tetrachlo...	3.318	2.565	39161271	45863394	17.335	16.849
28) SA Decachlor...	8.766	7.629	29676125	31591101	15.280	13.447
Target Compounds						
2) A alpha-BHC	3.778	3.051	170.5E6	197.4E6	49.582	45.777
3) MA gamma-BHC...	4.110	3.372	160.3E6	180.3E6	49.461m	46.313
4) MA Heptachlor	4.681	3.698	160.1E6	175.5E6	48.571	45.620
5) MB Aldrin	5.019	3.969	156.4E6	178.3E6	50.370	48.016
6) B beta-BHC	4.327	3.672	66822520	65983139	47.326	43.548
7) B delta-BHC	4.567	3.891	119.2E6	179.5E6	42.975	46.669
8) B Heptachlo...	5.453	4.466	140.9E6	155.2E6	49.363	45.966
9) A Endosulfan I	5.838	4.828	129.0E6	142.3E6	48.508	44.473
10) B gamma-Chl...	5.708	4.714	146.5E6	157.9E6	51.210	46.658
11) B alpha-Chl...	5.785	4.775	142.6E6	153.6E6	49.491	45.872
12) B 4,4'-DDE	5.968	4.970	121.9E6	148.4E6	48.798	48.402
13) MA Dieldrin	6.115	5.089	137.1E6	165.9E6	50.002	49.218
14) MA Endrin	6.346	5.360	122.2E6	147.6E6	50.525	48.790
15) B Endosulfa...	6.575	5.657	115.6E6	137.0E6	51.218	48.956
16) A 4,4'-DDD	6.493	5.521	104.1E6	118.3E6	52.480	47.311
17) MA 4,4'-DDT	6.803	5.767	108.0E6	122.2E6	47.602	46.759
18) B Endrin al...	6.707	5.835	96530071	107.3E6	53.298	50.401
19) B Endosulfa...	6.939	6.058	117.4E6	130.7E6	50.625	46.326
20) A Methoxychlor	7.287	6.344	58081519	66357116	48.145	48.822
21) B Endrin ke...	7.425	6.554	121.3E6	141.4E6	49.147	45.908
22) Mirex	7.881	6.725	94755470	107.4E6	50.026	45.421

(f)=RT Delta > 1/2 Window (#)=Amounts differ by > 25% (m)=manual int.

Data Path : Z:\pestpcbsrv\HPCHEM1\ECD_L\Data\PL112922\
 Data File : PL079482.D
 Signal(s) : Signal #1: ECD1A.ch Signal #2: ECD2B.ch
 Acq On : 29 Nov 2022 17:23
 Operator : AR\AJ
 Sample : N5787-01MSD
 Misc :
 ALS Vial : 9 Sample Multiplier: 1

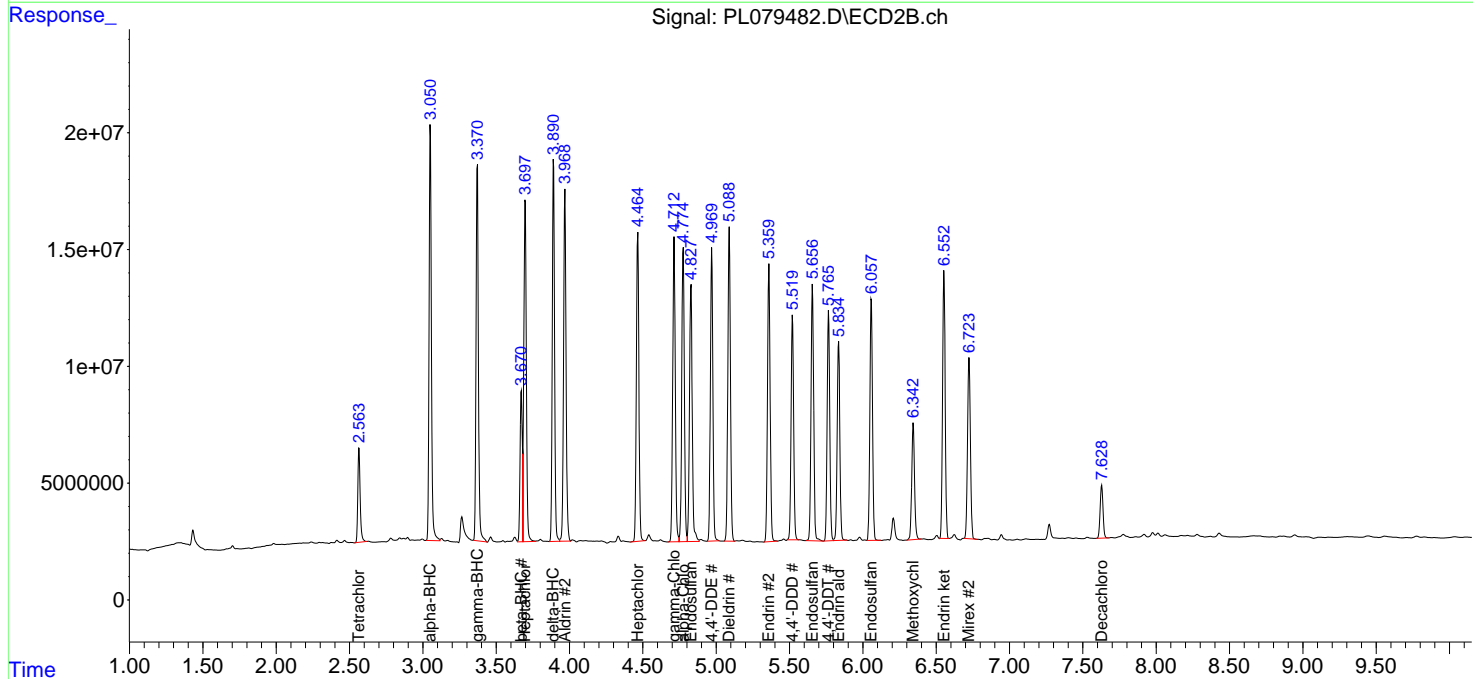
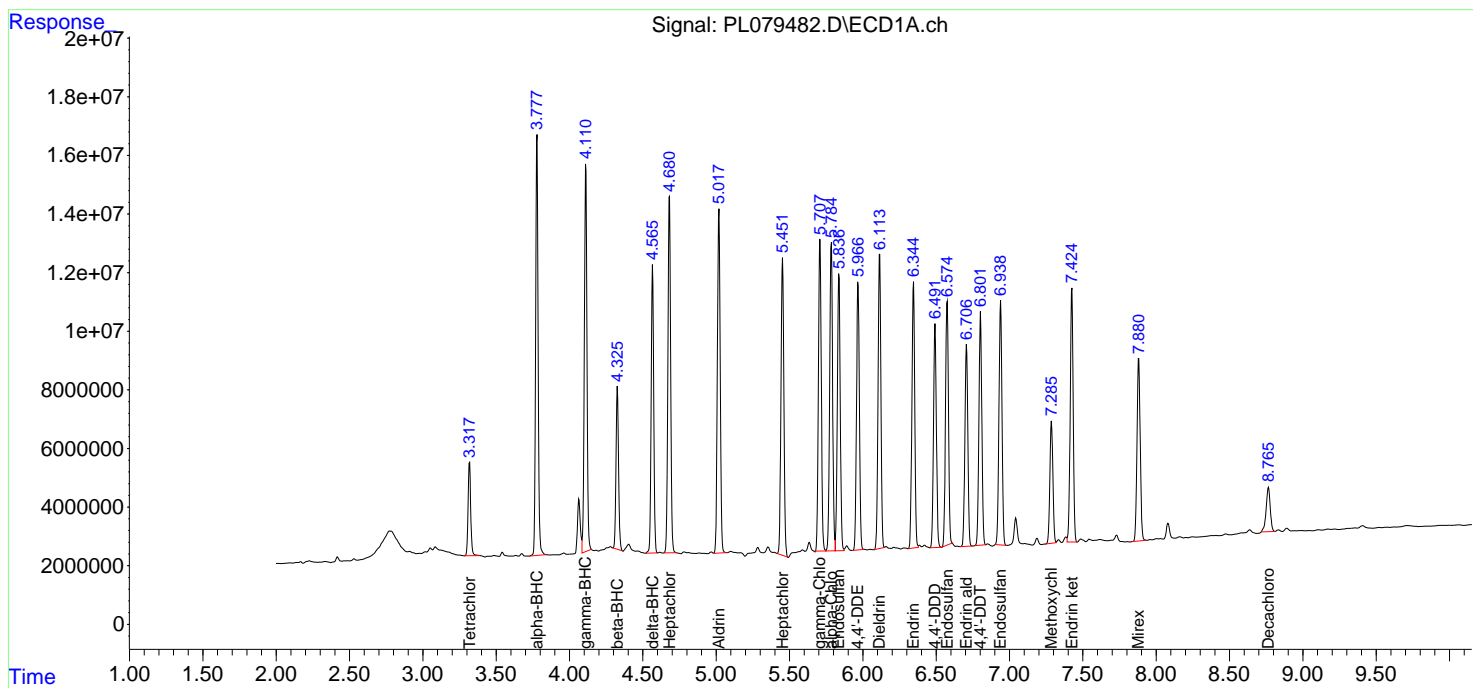
Instrument :
 ECD_L
ClientSampleId :
 SB-24-STOCKMSD

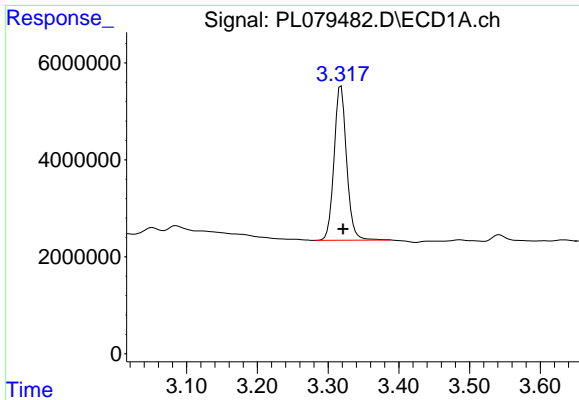
Manual Integrations
APPROVED

Reviewed By :Abdul Mirza 11/30/2022
 Supervised By :Ankita Jodhani 11/30/2022

Integration File signal 1: autoint1.e
 Integration File signal 2: autoint2.e
 Quant Time: Nov 29 20:41:17 2022
 Quant Method : Z:\pestpcbsrv\HPCHEM1\ECD_L\methods\PL112322.M
 Quant Title : GC Extractables
 QLast Update : Thu Nov 24 00:09:49 2022
 Response via : Initial Calibration
 Integrator: ChemStation

Volume Inj. : 1 µl
 Signal #1 Phase : ZB-MR2 Signal #2 Phase: ZB-MR1
 Signal #1 Info : 30M x 0.32mm x0.2 Signal #2 Info : 30M x 0.32mm x0.5µm



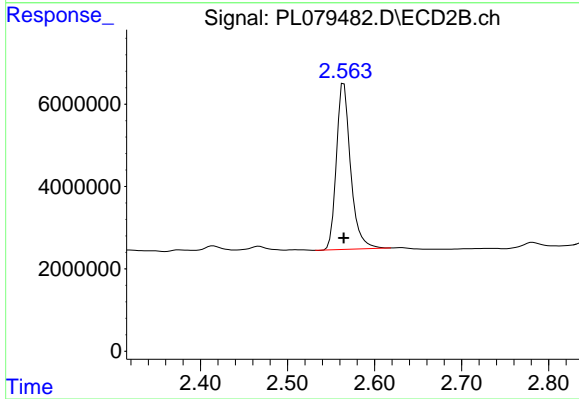


#1 Tetrachloro-m-xylene
 R.T.: 3.318 min
 Delta R.T.: -0.003 min
 Response: 39161271
 Conc: 17.34 ng/ml

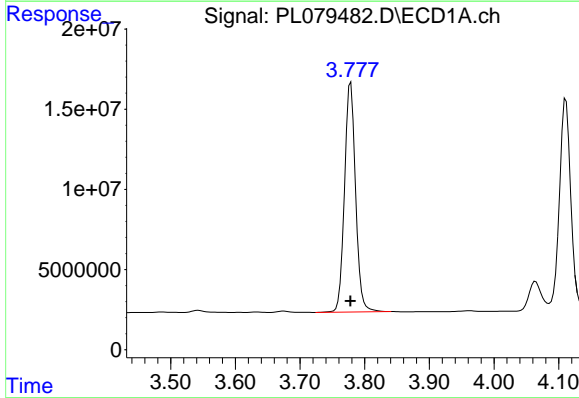
Instrument :
 ECD_L
 ClientSampleId :
 SB-24-STOCKMSD

Manual Integrations
 APPROVED

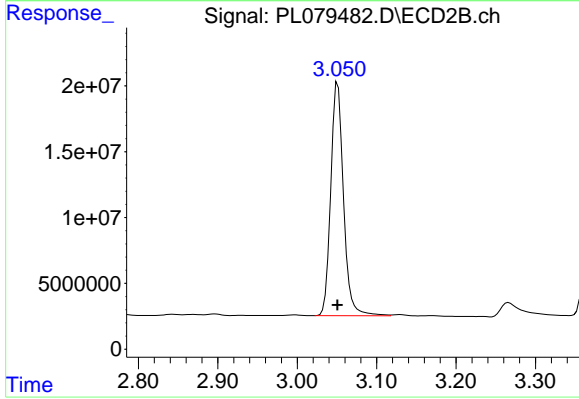
Reviewed By :Abdul Mirza 11/30/2022
 Supervised By :Ankita Jodhani 11/30/2022



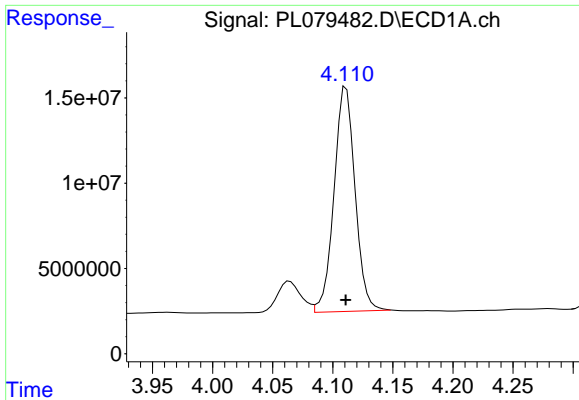
#1 Tetrachloro-m-xylene
 R.T.: 2.565 min
 Delta R.T.: 0.000 min
 Response: 45863394
 Conc: 16.85 ng/ml



#2 alpha-BHC
 R.T.: 3.778 min
 Delta R.T.: 0.000 min
 Response: 170499304
 Conc: 49.58 ng/ml



#2 alpha-BHC
 R.T.: 3.051 min
 Delta R.T.: 0.000 min
 Response: 197389740
 Conc: 45.78 ng/ml

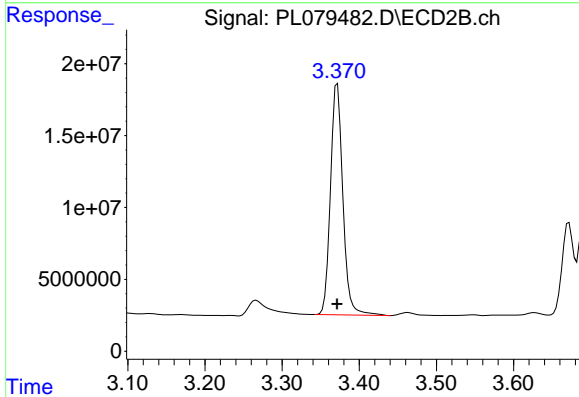


#3 gamma-BHC (Lindane)
 R.T.: 4.110 min
 Delta R.T.: -0.001 min
 Response: 160292723
 Conc: 49.46 ng/ml

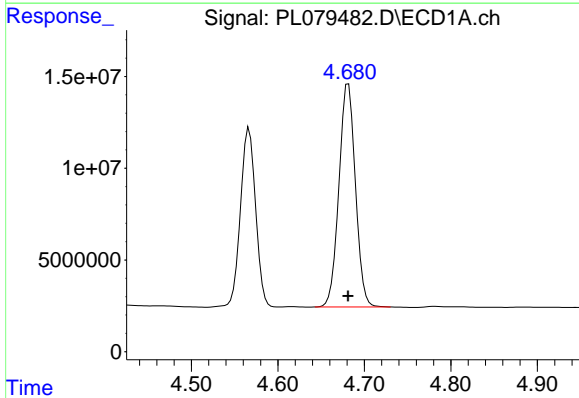
Instrument :
 ECD_L
 ClientSampleId :
 SB-24-STOCKMSD

Manual Integrations
 APPROVED

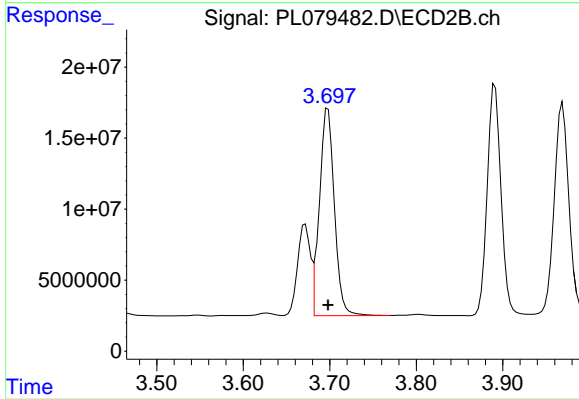
Reviewed By :Abdul Mirza 11/30/2022
 Supervised By :Ankita Jodhani 11/30/2022



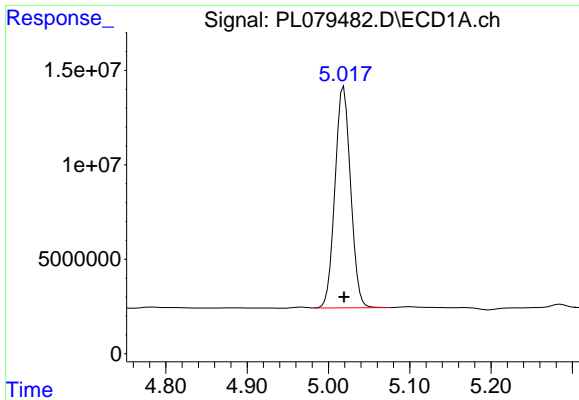
#3 gamma-BHC (Lindane)
 R.T.: 3.372 min
 Delta R.T.: 0.000 min
 Response: 180328796
 Conc: 46.31 ng/ml



#4 Heptachlor
 R.T.: 4.681 min
 Delta R.T.: 0.000 min
 Response: 160054288
 Conc: 48.57 ng/ml



#4 Heptachlor
 R.T.: 3.698 min
 Delta R.T.: 0.000 min
 Response: 175535408
 Conc: 45.62 ng/ml

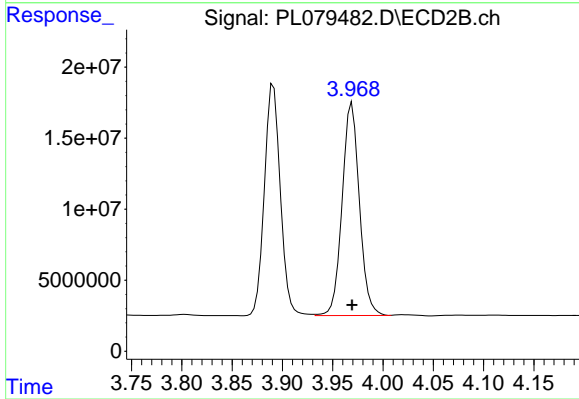


#5 Aldrin
 R.T.: 5.019 min
 Delta R.T.: 0.000 min
 Response: 156416349
 Conc: 50.37 ng/ml

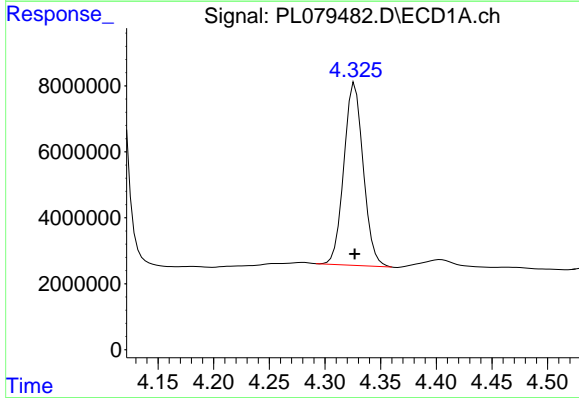
Instrument :
 ECD_L
 ClientSampleId :
 SB-24-STOCKMSD

Manual Integrations
 APPROVED

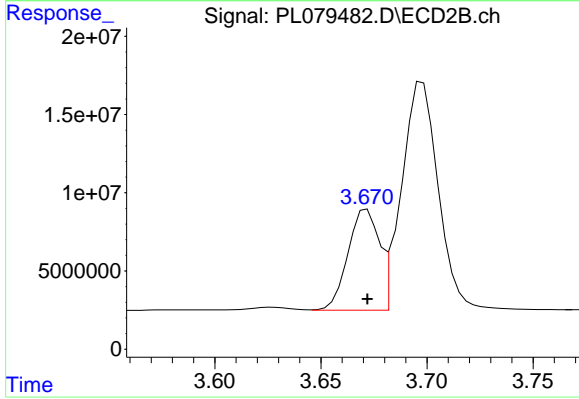
Reviewed By :Abdul Mirza 11/30/2022
 Supervised By :Ankita Jodhani 11/30/2022



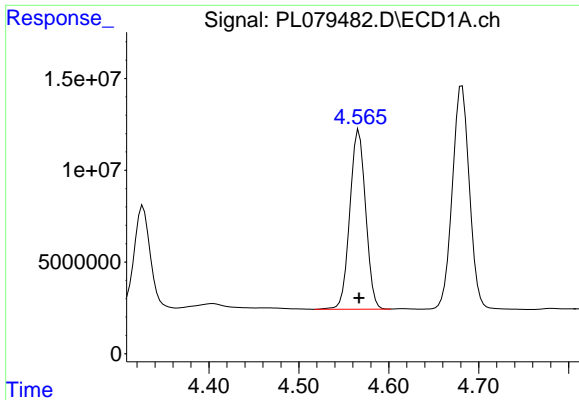
#5 Aldrin
 R.T.: 3.969 min
 Delta R.T.: 0.000 min
 Response: 178279508
 Conc: 48.02 ng/ml



#6 beta-BHC
 R.T.: 4.327 min
 Delta R.T.: 0.000 min
 Response: 66822520
 Conc: 47.33 ng/ml



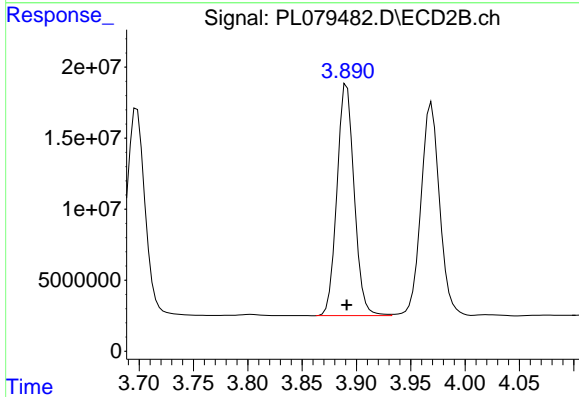
#6 beta-BHC
 R.T.: 3.672 min
 Delta R.T.: 0.000 min
 Response: 65983139
 Conc: 43.55 ng/ml



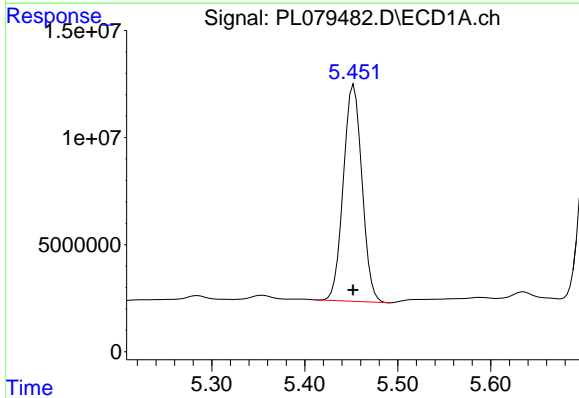
#7 delta-BHC
 R.T.: 4.567 min
 Delta R.T.: 0.000 min
 Response: 119229409
 Conc: 42.98 ng/ml

Instrument : ECD_L
 Client Sample Id : SB-24-STOCKMSD

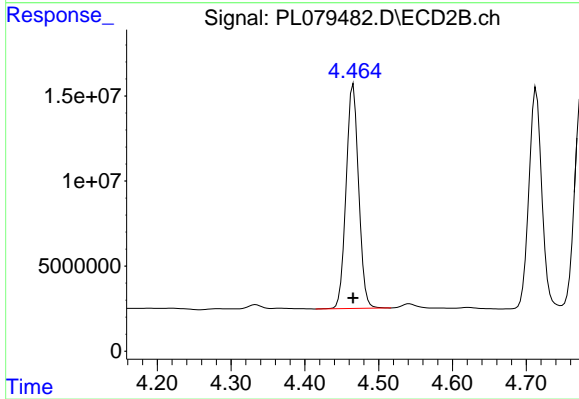
Manual Integrations
APPROVED
 Reviewed By :Abdul Mirza 11/30/2022
 Supervised By :Ankita Jodhani 11/30/2022



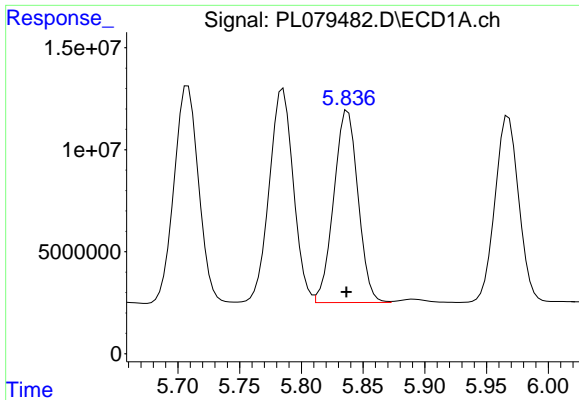
#7 delta-BHC
 R.T.: 3.891 min
 Delta R.T.: 0.000 min
 Response: 179546515
 Conc: 46.67 ng/ml



#8 Heptachlor epoxide
 R.T.: 5.453 min
 Delta R.T.: 0.000 min
 Response: 140929870
 Conc: 49.36 ng/ml



#8 Heptachlor epoxide
 R.T.: 4.466 min
 Delta R.T.: 0.000 min
 Response: 155151890
 Conc: 45.97 ng/ml



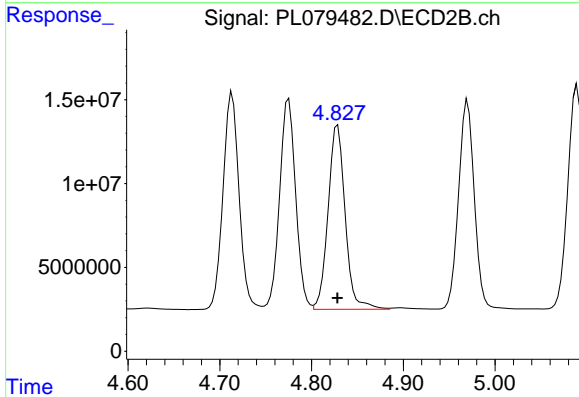
#9 Endosulfan I

R.T.: 5.838 min
 Delta R.T.: 0.001 min
 Response: 128969665
 Conc: 48.51 ng/ml

Instrument :
 ECD_L
 ClientSampleId :
 SB-24-STOCKMSD

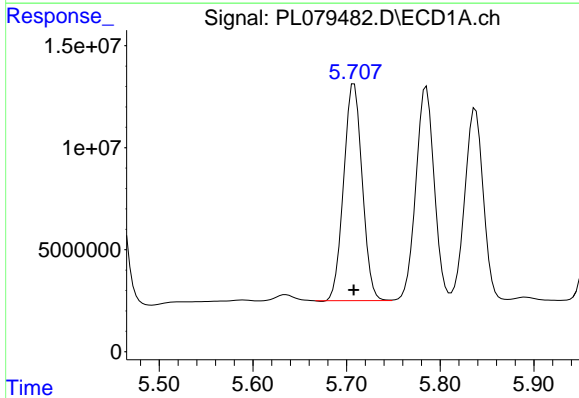
Manual Integrations
 APPROVED

Reviewed By :Abdul Mirza 11/30/2022
 Supervised By :Ankita Jodhani 11/30/2022



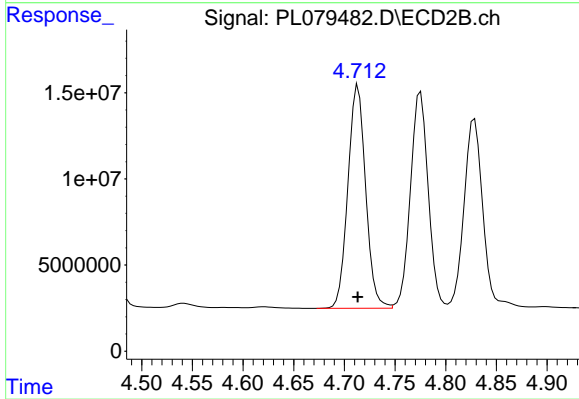
#9 Endosulfan I

R.T.: 4.828 min
 Delta R.T.: 0.000 min
 Response: 142303984
 Conc: 44.47 ng/ml



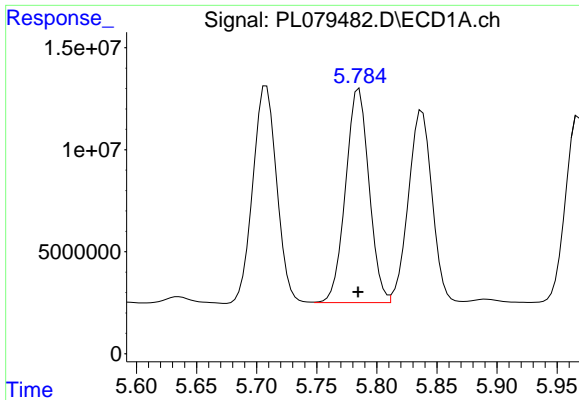
#10 gamma-Chlordane

R.T.: 5.708 min
 Delta R.T.: 0.000 min
 Response: 146521138
 Conc: 51.21 ng/ml



#10 gamma-Chlordane

R.T.: 4.714 min
 Delta R.T.: 0.000 min
 Response: 157902142
 Conc: 46.66 ng/ml



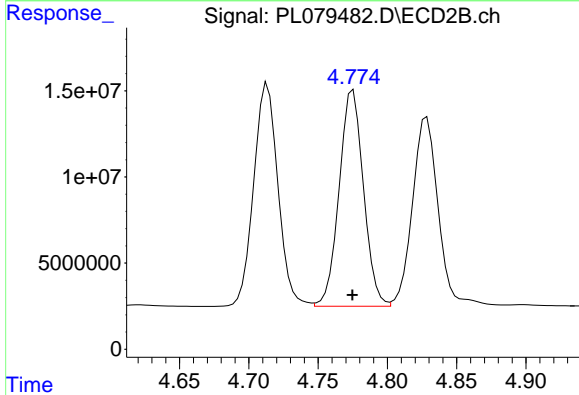
#11 alpha-Chlordane

R.T.: 5.785 min
 Delta R.T.: 0.000 min
 Response: 142614284
 Conc: 49.49 ng/ml

Instrument :
 ECD_L
 ClientSampleId :
 SB-24-STOCKMSD

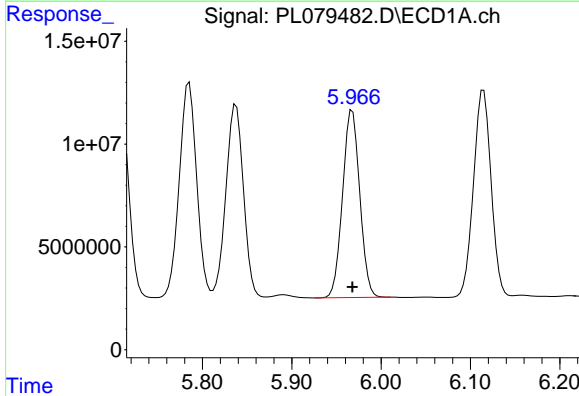
Manual Integrations
 APPROVED

Reviewed By :Abdul Mirza 11/30/2022
 Supervised By :Ankita Jodhani 11/30/2022



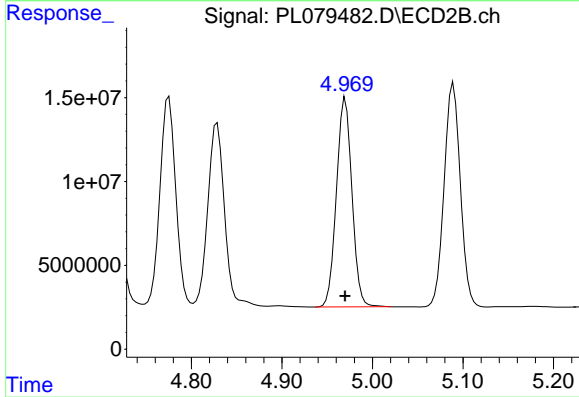
#11 alpha-Chlordane

R.T.: 4.775 min
 Delta R.T.: 0.000 min
 Response: 153633244
 Conc: 45.87 ng/ml



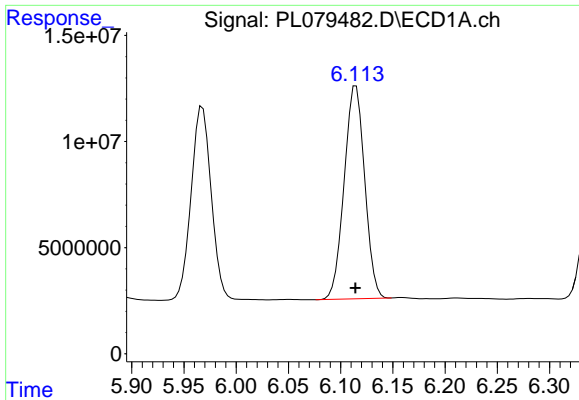
#12 4,4'-DDE

R.T.: 5.968 min
 Delta R.T.: 0.000 min
 Response: 121915829
 Conc: 48.80 ng/ml



#12 4,4'-DDE

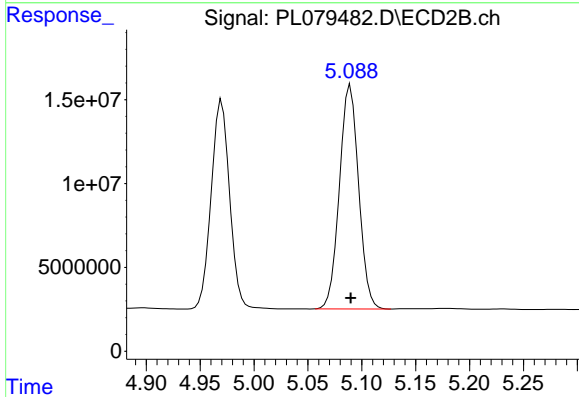
R.T.: 4.970 min
 Delta R.T.: 0.000 min
 Response: 148405543
 Conc: 48.40 ng/ml



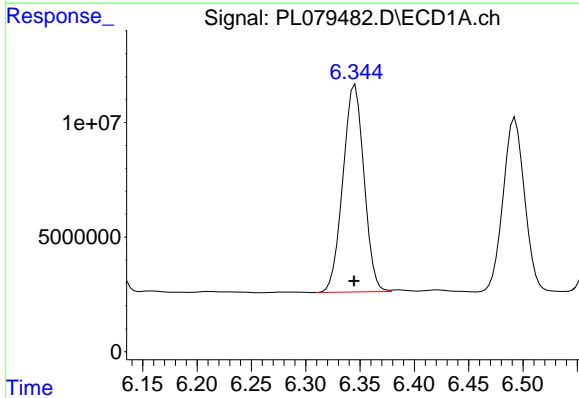
#13 Dieldrin
 R.T.: 6.115 min
 Delta R.T.: 0.000 min
 Response: 137148027
 Conc: 50.00 ng/ml

Instrument : ECD_L
 Client Sample Id : SB-24-STOCKMSD

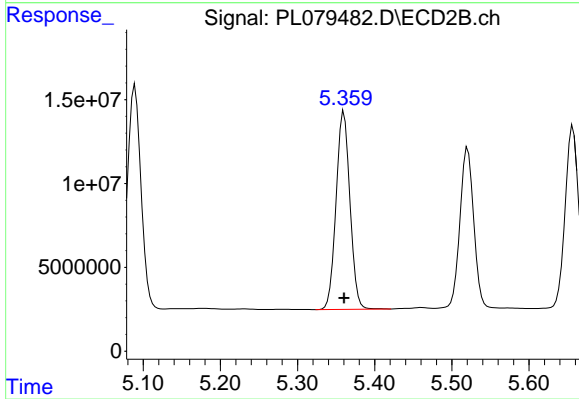
Manual Integrations
APPROVED
 Reviewed By :Abdul Mirza 11/30/2022
 Supervised By :Ankita Jodhani 11/30/2022



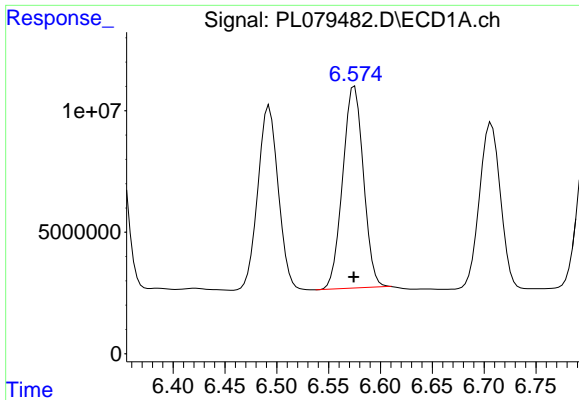
#13 Dieldrin
 R.T.: 5.089 min
 Delta R.T.: 0.000 min
 Response: 165921714
 Conc: 49.22 ng/ml



#14 Endrin
 R.T.: 6.346 min
 Delta R.T.: 0.001 min
 Response: 122230198
 Conc: 50.53 ng/ml



#14 Endrin
 R.T.: 5.360 min
 Delta R.T.: 0.000 min
 Response: 147576500
 Conc: 48.79 ng/ml



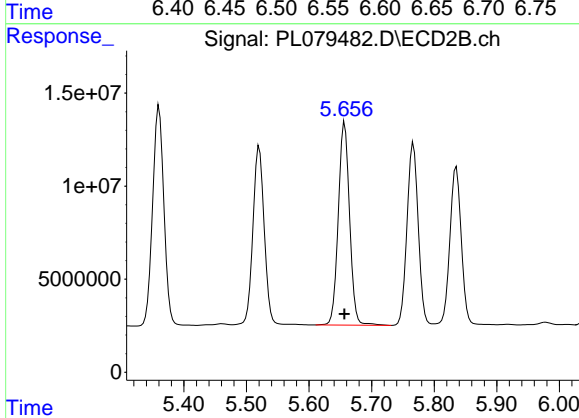
#15 Endosulfan II

R.T.: 6.575 min
 Delta R.T.: 0.000 min
 Response: 115621595
 Conc: 51.22 ng/ml

Instrument :
 ECD_L
 ClientSampleId :
 SB-24-STOCKMSD

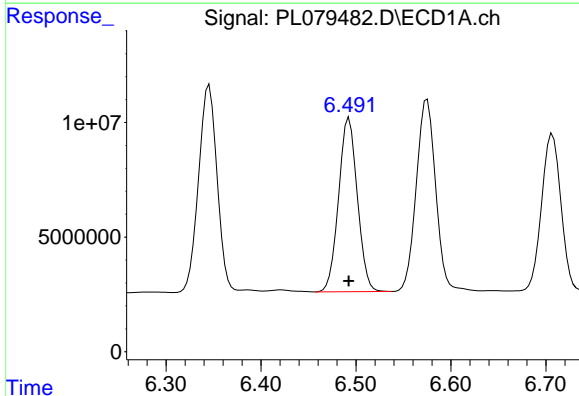
Manual Integrations
 APPROVED

Reviewed By :Abdul Mirza 11/30/2022
 Supervised By :Ankita Jodhani 11/30/2022



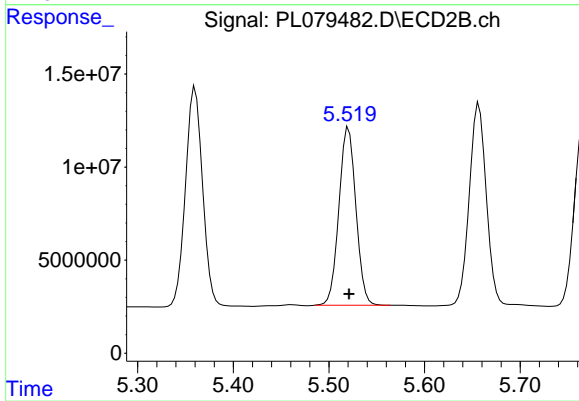
#15 Endosulfan II

R.T.: 5.657 min
 Delta R.T.: 0.000 min
 Response: 136989945
 Conc: 48.96 ng/ml



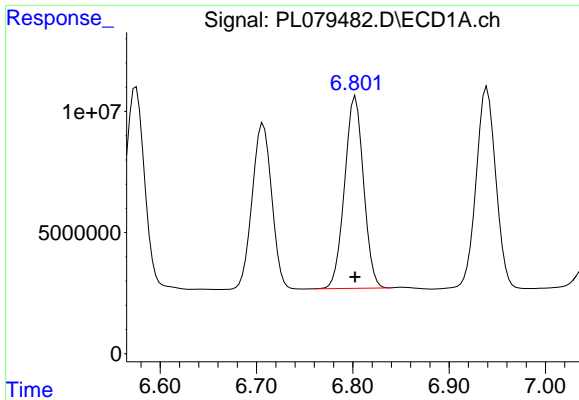
#16 4,4'-DDD

R.T.: 6.493 min
 Delta R.T.: 0.000 min
 Response: 104120901
 Conc: 52.48 ng/ml



#16 4,4'-DDD

R.T.: 5.521 min
 Delta R.T.: 0.000 min
 Response: 118347826
 Conc: 47.31 ng/ml



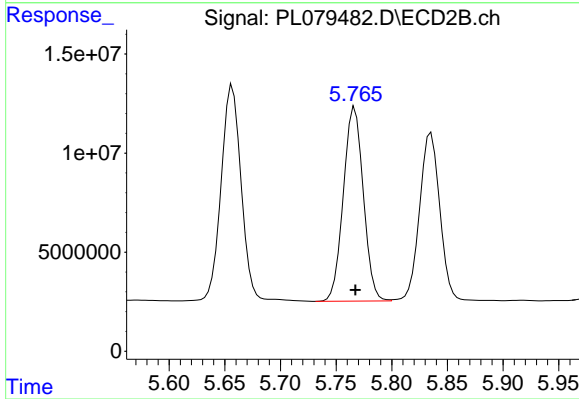
#17 4,4'-DDT

R.T.: 6.803 min
 Delta R.T.: 0.000 min
 Response: 107978299
 Conc: 47.60 ng/ml

Instrument :
 ECD_L
 ClientSampleId :
 SB-24-STOCKMSD

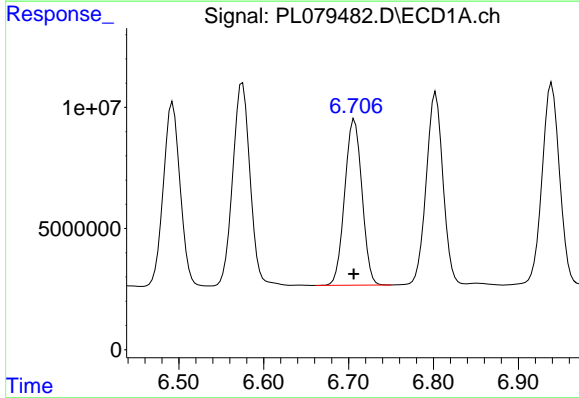
Manual Integrations
 APPROVED

Reviewed By :Abdul Mirza 11/30/2022
 Supervised By :Ankita Jodhani 11/30/2022



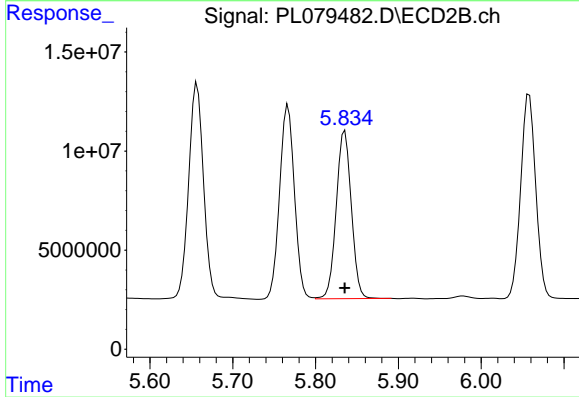
#17 4,4'-DDT

R.T.: 5.767 min
 Delta R.T.: 0.000 min
 Response: 122208925
 Conc: 46.76 ng/ml



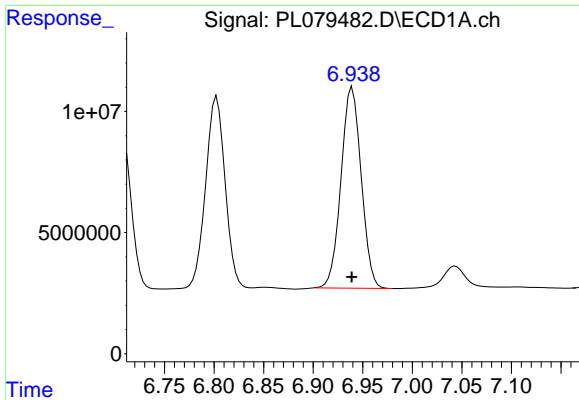
#18 Endrin aldehyde

R.T.: 6.707 min
 Delta R.T.: 0.000 min
 Response: 96530071
 Conc: 53.30 ng/ml



#18 Endrin aldehyde

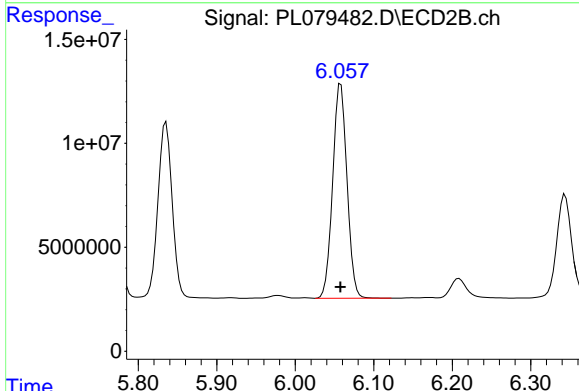
R.T.: 5.835 min
 Delta R.T.: 0.000 min
 Response: 107275020
 Conc: 50.40 ng/ml



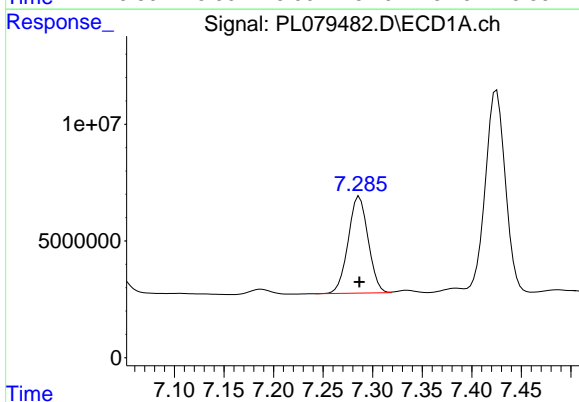
#19 Endosulfan Sulfate
 R.T.: 6.939 min
 Delta R.T.: 0.000 min
 Response: 117396113
 Conc: 50.63 ng/ml

Instrument : ECD_L
 ClientSampleId : SB-24-STOCKMSD

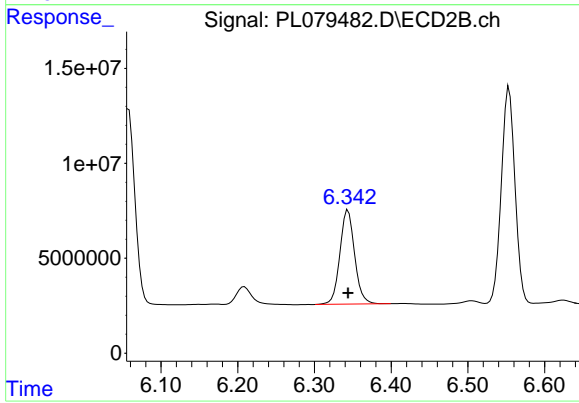
Manual Integrations
APPROVED
 Reviewed By :Abdul Mirza 11/30/2022
 Supervised By :Ankita Jodhani 11/30/2022



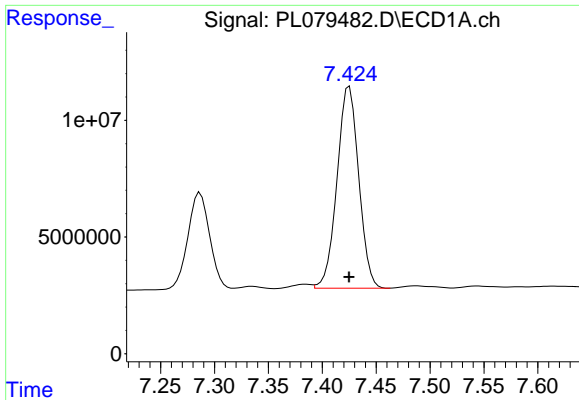
#19 Endosulfan Sulfate
 R.T.: 6.058 min
 Delta R.T.: 0.000 min
 Response: 130716534
 Conc: 46.33 ng/ml



#20 Methoxychlor
 R.T.: 7.287 min
 Delta R.T.: 0.000 min
 Response: 58081519
 Conc: 48.14 ng/ml



#20 Methoxychlor
 R.T.: 6.344 min
 Delta R.T.: 0.000 min
 Response: 66357116
 Conc: 48.82 ng/ml



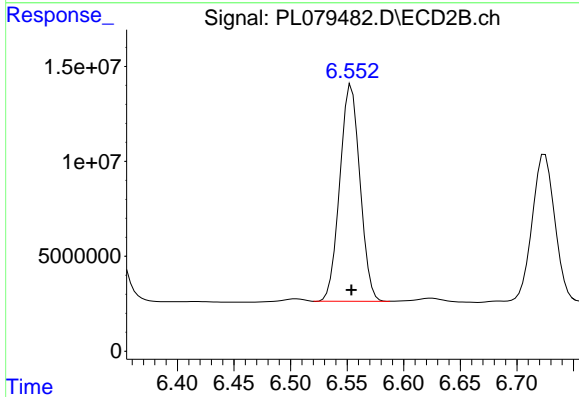
#21 Endrin ketone

R.T.: 7.425 min
 Delta R.T.: 0.000 min
 Response: 121257111
 Conc: 49.15 ng/ml

Instrument :
 ECD_L
 ClientSampleId :
 SB-24-STOCKMSD

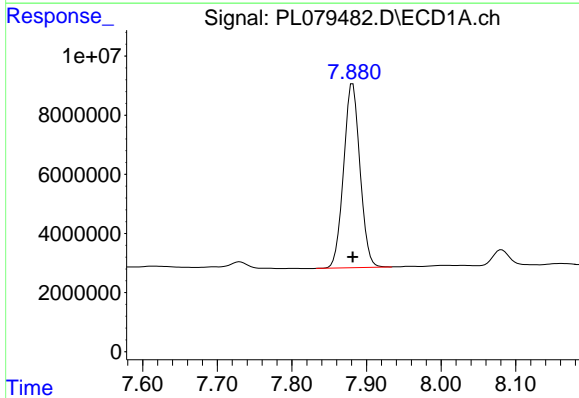
Manual Integrations
 APPROVED

Reviewed By :Abdul Mirza 11/30/2022
 Supervised By :Ankita Jodhani 11/30/2022



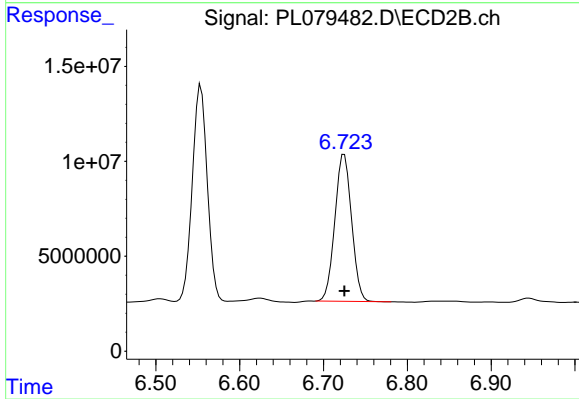
#21 Endrin ketone

R.T.: 6.554 min
 Delta R.T.: 0.000 min
 Response: 141393349
 Conc: 45.91 ng/ml



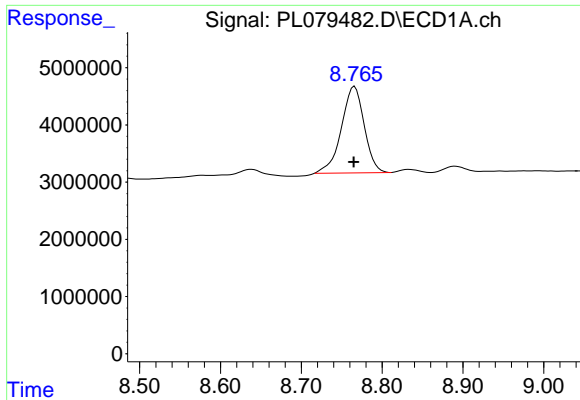
#22 Mirex

R.T.: 7.881 min
 Delta R.T.: 0.000 min
 Response: 94755470
 Conc: 50.03 ng/ml



#22 Mirex

R.T.: 6.725 min
 Delta R.T.: 0.000 min
 Response: 107422288
 Conc: 45.42 ng/ml

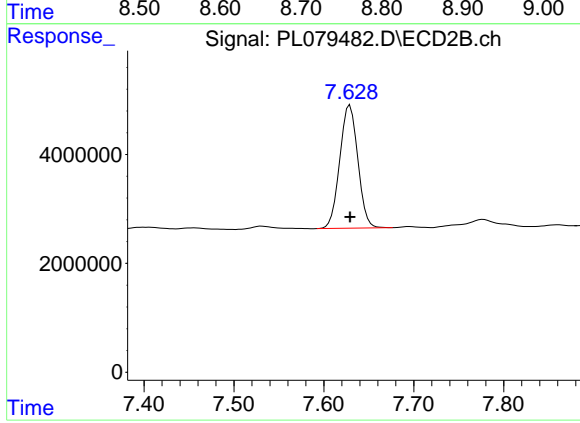


#28 Decachlorobiphenyl
R.T.: 8.766 min
Delta R.T.: 0.001 min
Response: 29676125
Conc: 15.28 ng/ml

Instrument :
ECD_L
ClientSampleId :
SB-24-STOCKMSD

Manual Integrations
APPROVED

Reviewed By :Abdul Mirza 11/30/2022
Supervised By :Ankita Jodhani 11/30/2022



#28 Decachlorobiphenyl
R.T.: 7.629 min
Delta R.T.: 0.000 min
Response: 31591101
Conc: 13.45 ng/ml