

Data Path : Z:\pestpcbsrv\HPCHEM1\ECD_L\Data\PL112923\
 Data File : PL086857.D
 Signal(s) : Signal #1: ECD1A.ch Signal #2: ECD2B.ch
 Acq On : 29 Nov 2023 03:21
 Operator : AR\AJ
 Sample : PSTDICC025
 Misc :
 ALS Vial : 8 Sample Multiplier: 1

Instrument :
 ECD_L
 ClientSampleId :
 PSTDICC025

Integration File signal 1: autoint1.e
 Integration File signal 2: autoint2.e
 Quant Time: Nov 29 03:52:15 2023
 Quant Method : Z:\pestpcbsrv\HPCHEM1\ECD_L\methods\PL112923.M
 Quant Title : GC Extractables
 QLast Update : Wed Nov 29 03:31:33 2023
 Response via : Initial Calibration
 Integrator: ChemStation

Volume Inj. : 1 µl
 Signal #1 Phase : ZB-MR2 Signal #2 Phase: ZB-MR1
 Signal #1 Info : 30M x 0.32mm x0.2 Signal #2 Info : 30M x 0.32mm x0.5µm

Compound	RT#1	RT#2	Resp#1	Resp#2	ng/ml	ng/ml

System Monitoring Compounds						
1) SA Tetrachlo...	3.343	2.610	81264308	22898039	24.589	24.144
28) SA Decachlor...	8.843	7.761	69482418	29114238	25.764	26.084
Target Compounds						
2) A alpha-BHC	3.797	3.108	113.7E6	30782167	23.140	22.627
3) MA gamma-BHC...	4.129	3.436	108.1E6	30103978	23.471	23.149
4) MA Heptachlor	4.715	3.771	99322641	29034247	24.071	23.638
5) MB Aldrin	5.055	4.047	105.1E6	30014653	23.827	23.235
6) B beta-BHC	4.333	3.738	47656343	13750926	25.339	25.052
7) B delta-BHC	4.576	3.962	102.4E6	28253554	23.678	22.670
8) B Heptachlo...	5.486	4.552	89843778	28514589	23.638	23.874
9) A Endosulfan I	5.869	4.920	90488832	34517243	24.764	26.920
10) B gamma-Chl...	5.744	4.804	94425681	28496945	24.289	23.824
11) B alpha-Chl...	5.823	4.868	95045280	32151206	24.517	25.212
12) B 4,4'-DDE	6.007	5.068	74487574	22381346	23.715	22.953
13) MA Dieldrin	6.147	5.186	86094225	26179928	23.857	23.156
14) MA Endrin	6.375	5.459	64362238	20938952	24.217	23.644
15) B Endosulfa...	6.599	5.758	71941428	23408271	24.460	23.870
16) A 4,4'-DDD	6.526	5.624	58362504	19004387	23.761	23.179
17) MA 4,4'-DDT	6.841	5.875	65705179	19998145	24.642	23.248
18) B Endrin al...	6.730	5.940	54086218	17807997	24.917	24.552
19) B Endosulfa...	6.966	6.164	72675376	24270268	24.706	24.403
20) A Methoxychlor	7.328	6.459	34007688	13451795	24.725	24.864
21) B Endrin ke...	7.448	6.665	75040394	28915306	23.967	23.861
22) Mirex	7.920	6.841	66774552	27312358	25.644	25.624

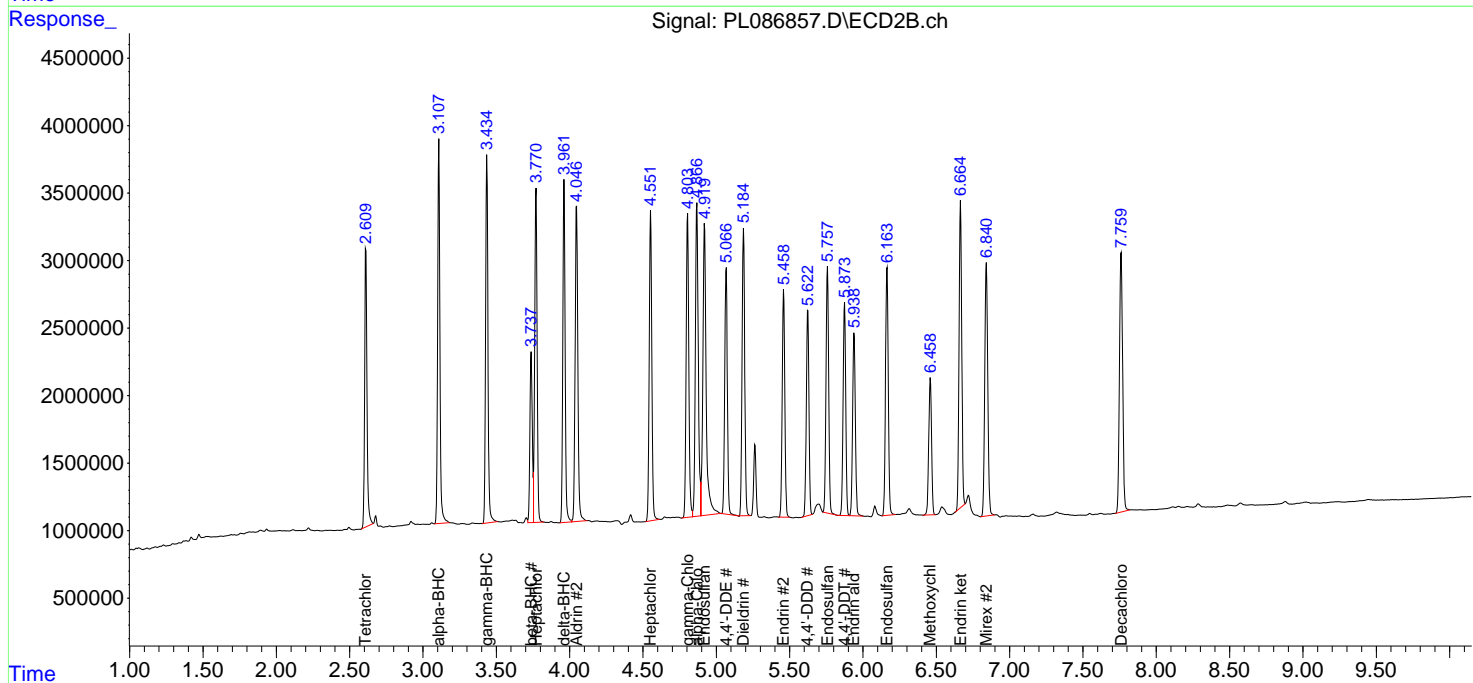
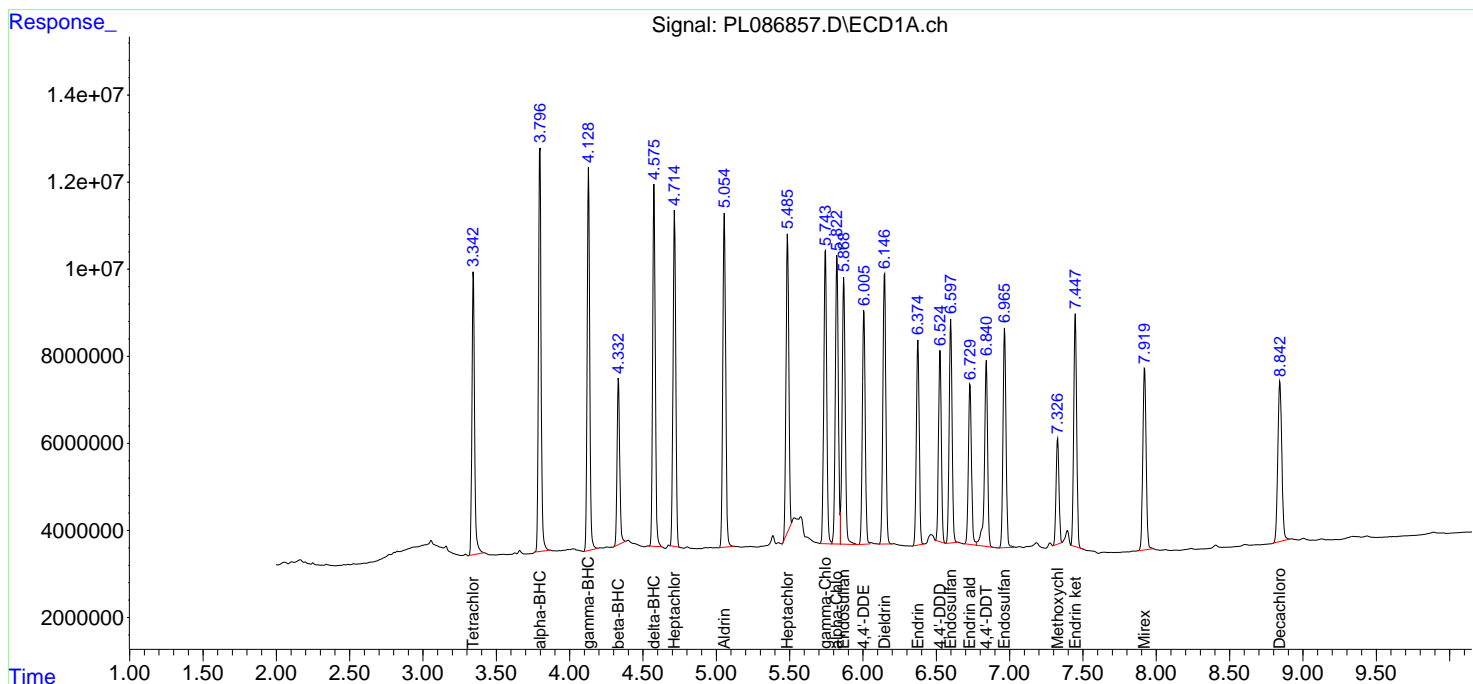
(f)=RT Delta > 1/2 Window (#)=Amounts differ by > 25% (m)=manual int.

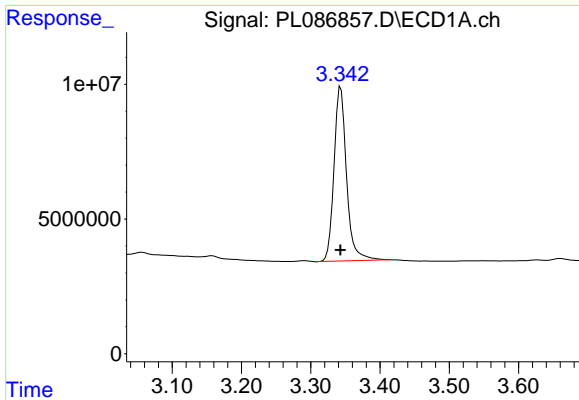
Data Path : Z:\pestpcbsrv\HPCHEM1\ECD_L\Data\PL112923\
 Data File : PL086857.D
 Signal(s) : Signal #1: ECD1A.ch Signal #2: ECD2B.ch
 Acq On : 29 Nov 2023 03:21
 Operator : AR\AJ
 Sample : PSTDICC025
 Misc :
 ALS Vial : 8 Sample Multiplier: 1

Instrument :
 ECD_L
 ClientSampleId :
 PSTDICC025

Integration File signal 1: autoint1.e
 Integration File signal 2: autoint2.e
 Quant Time: Nov 29 03:52:15 2023
 Quant Method : Z:\pestpcbsrv\HPCHEM1\ECD_L\methods\PL112923.M
 Quant Title : GC Extractables
 QLast Update : Wed Nov 29 03:31:33 2023
 Response via : Initial Calibration
 Integrator: ChemStation

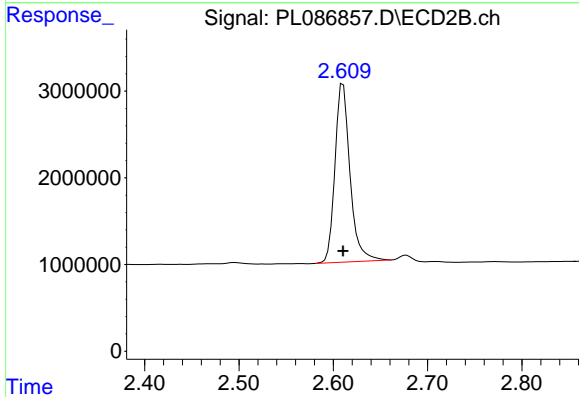
Volume Inj. : 1 µl
 Signal #1 Phase : ZB-MR2 Signal #2 Phase: ZB-MR1
 Signal #1 Info : 30M x 0.32mm x0.2 Signal #2 Info : 30M x 0.32mm x0.5µm



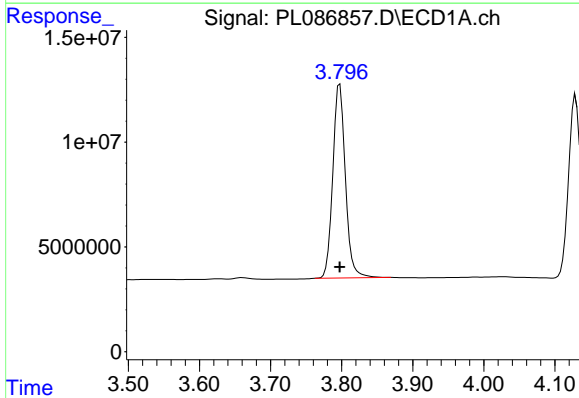


#1 Tetrachloro-m-xylene
 R.T.: 3.343 min
 Delta R.T.: 0.000 min
 Response: 81264308
 Conc: 24.59 ng/ml

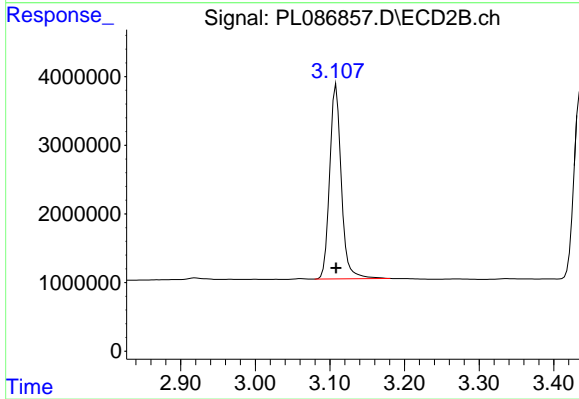
Instrument :
 ECD_L
 ClientSampleId :
 PSTDICC025



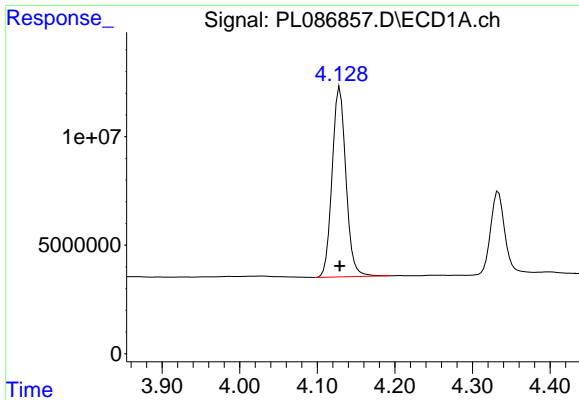
#1 Tetrachloro-m-xylene
 R.T.: 2.610 min
 Delta R.T.: 0.000 min
 Response: 22898039
 Conc: 24.14 ng/ml



#2 alpha-BHC
 R.T.: 3.797 min
 Delta R.T.: 0.000 min
 Response: 113668650
 Conc: 23.14 ng/ml



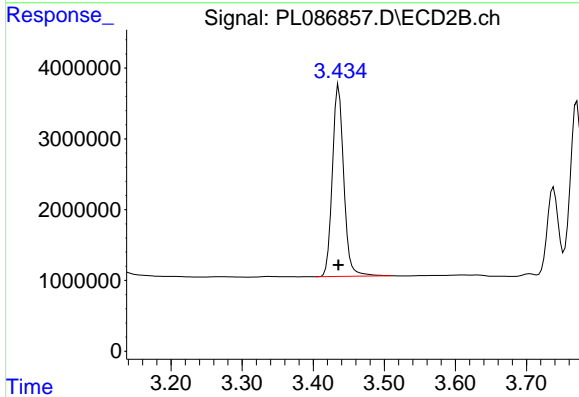
#2 alpha-BHC
 R.T.: 3.108 min
 Delta R.T.: 0.000 min
 Response: 30782167
 Conc: 22.63 ng/ml



#3 gamma-BHC (Lindane)

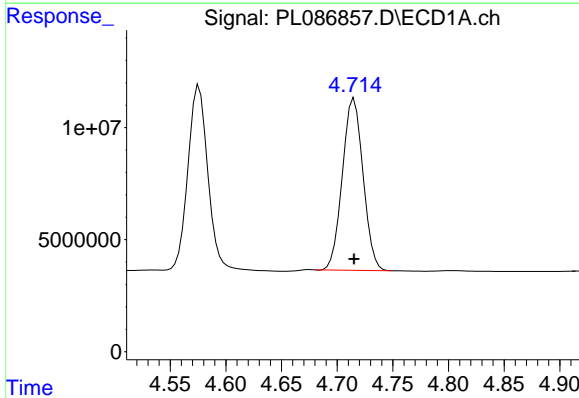
R.T.: 4.129 min
 Delta R.T.: 0.000 min
 Response: 108080292
 Conc: 23.47 ng/ml

Instrument :
 ECD_L
 ClientSampleId :
 PSTDICC025



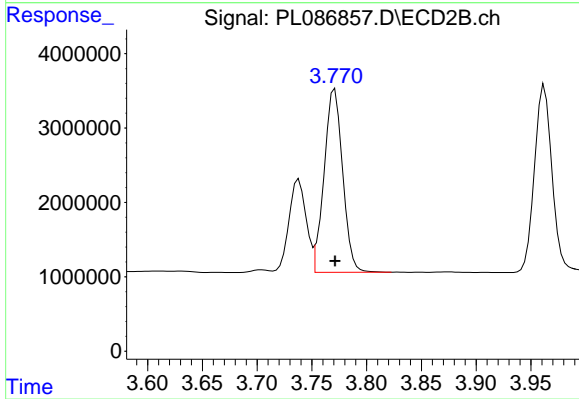
#3 gamma-BHC (Lindane)

R.T.: 3.436 min
 Delta R.T.: 0.000 min
 Response: 30103978
 Conc: 23.15 ng/ml



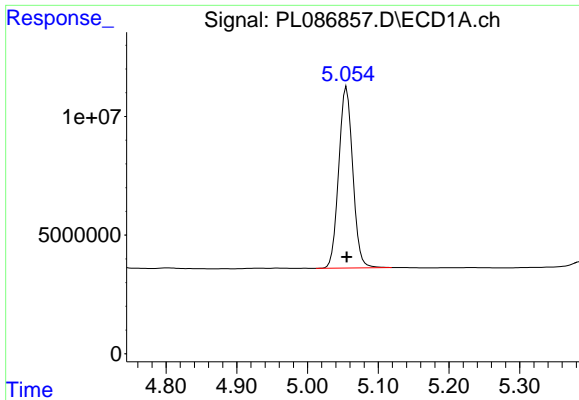
#4 Heptachlor

R.T.: 4.715 min
 Delta R.T.: 0.000 min
 Response: 99322641
 Conc: 24.07 ng/ml



#4 Heptachlor

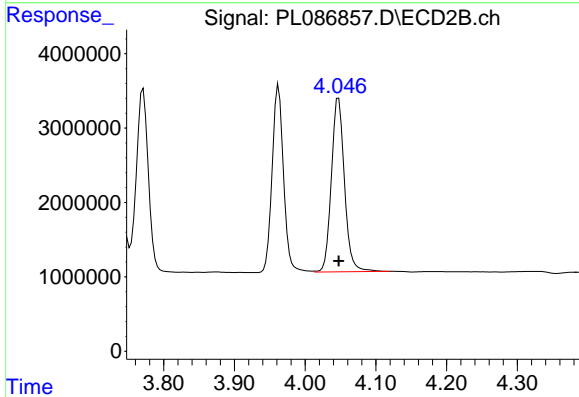
R.T.: 3.771 min
 Delta R.T.: 0.000 min
 Response: 29034247
 Conc: 23.64 ng/ml



#5 Aldrin

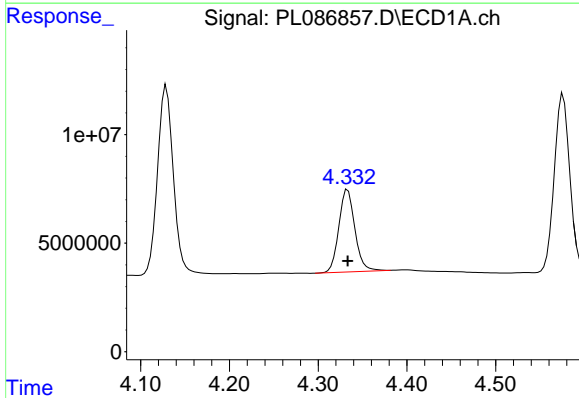
R.T.: 5.055 min
 Delta R.T.: 0.000 min
 Response: 105120856
 Conc: 23.83 ng/ml

Instrument :
 ECD_L
 ClientSampleId :
 PSTDICC025



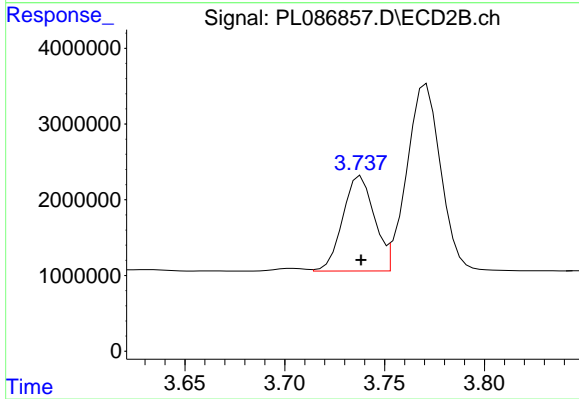
#5 Aldrin

R.T.: 4.047 min
 Delta R.T.: 0.000 min
 Response: 30014653
 Conc: 23.23 ng/ml



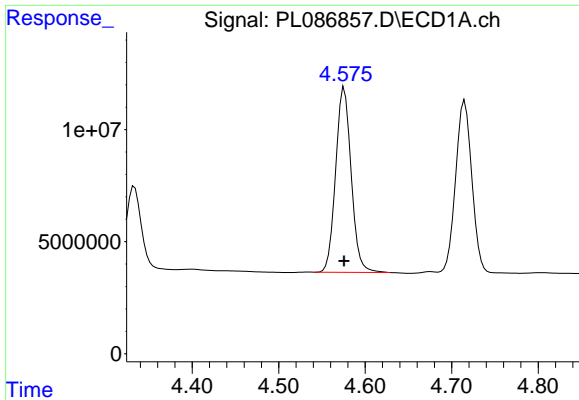
#6 beta-BHC

R.T.: 4.333 min
 Delta R.T.: 0.000 min
 Response: 47656343
 Conc: 25.34 ng/ml



#6 beta-BHC

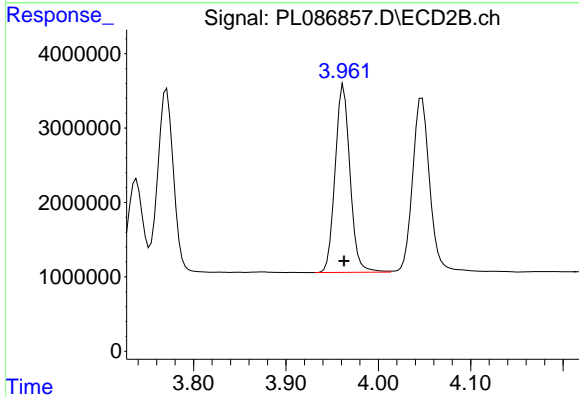
R.T.: 3.738 min
 Delta R.T.: 0.000 min
 Response: 13750926
 Conc: 25.05 ng/ml



#7 delta-BHC

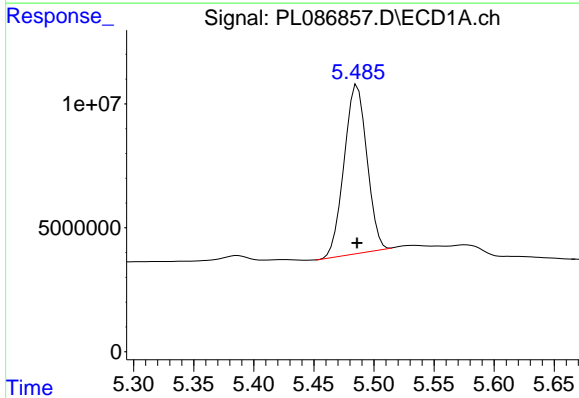
R.T.: 4.576 min
 Delta R.T.: 0.000 min
 Response: 102393543
 Conc: 23.68 ng/ml

Instrument :
 ECD_L
 ClientSampleId :
 PSTDICC025



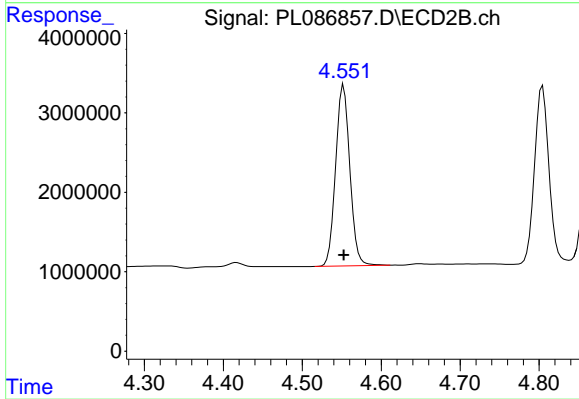
#7 delta-BHC

R.T.: 3.962 min
 Delta R.T.: 0.000 min
 Response: 28253554
 Conc: 22.67 ng/ml



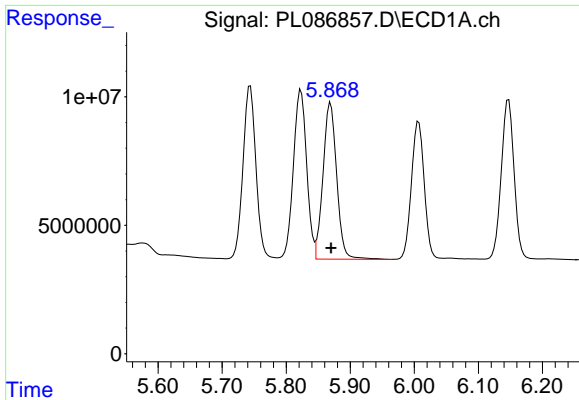
#8 Heptachlor epoxide

R.T.: 5.486 min
 Delta R.T.: 0.000 min
 Response: 89843778
 Conc: 23.64 ng/ml



#8 Heptachlor epoxide

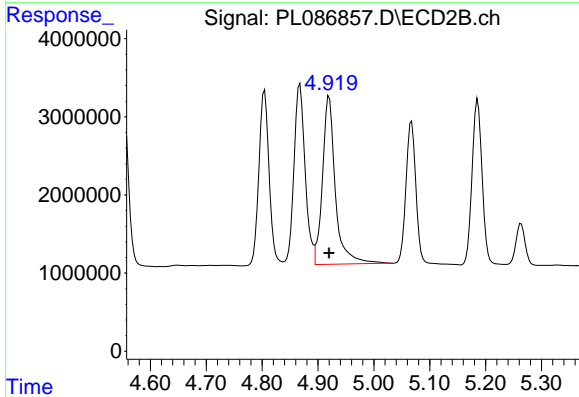
R.T.: 4.552 min
 Delta R.T.: 0.000 min
 Response: 28514589
 Conc: 23.87 ng/ml



#9 Endosulfan I

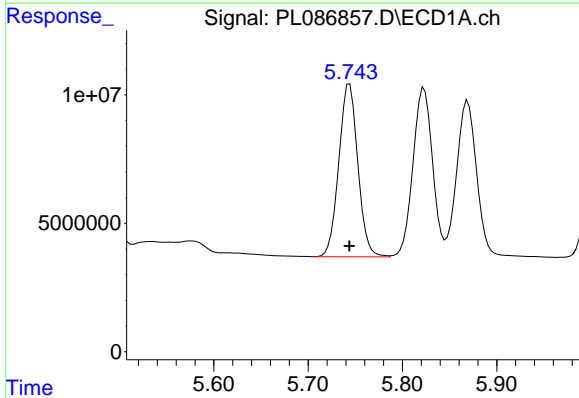
R.T.: 5.869 min
 Delta R.T.: 0.000 min
 Response: 90488832
 Conc: 24.76 ng/ml

Instrument :
 ECD_L
 ClientSampleId :
 PSTDICC025



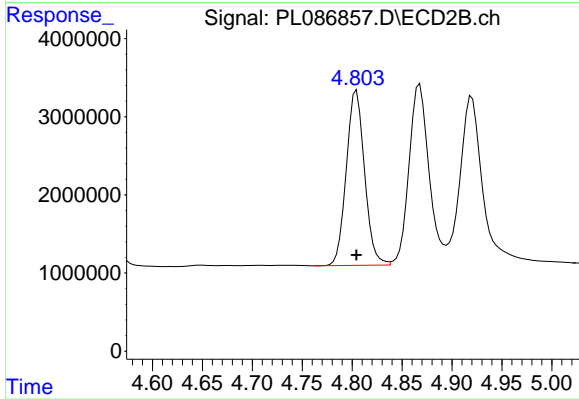
#9 Endosulfan I

R.T.: 4.920 min
 Delta R.T.: 0.000 min
 Response: 34517243
 Conc: 26.92 ng/ml



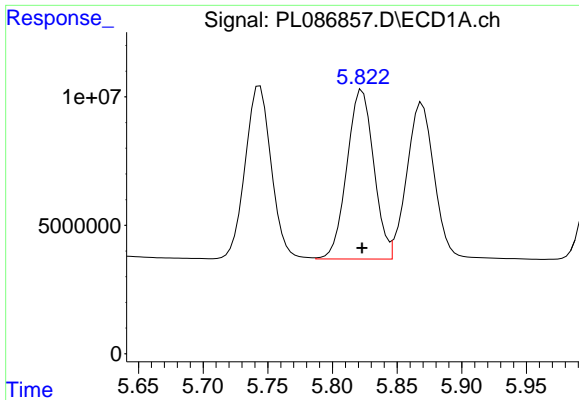
#10 gamma-Chlordane

R.T.: 5.744 min
 Delta R.T.: 0.000 min
 Response: 94425681
 Conc: 24.29 ng/ml



#10 gamma-Chlordane

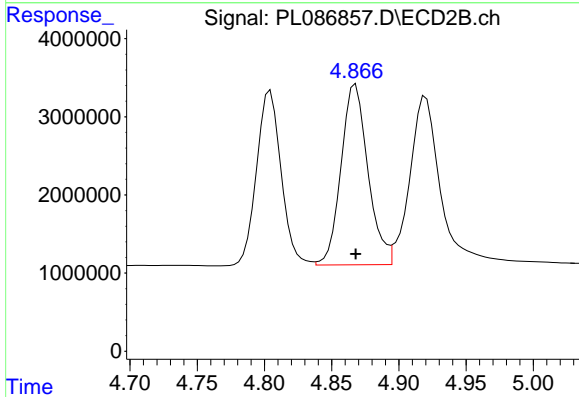
R.T.: 4.804 min
 Delta R.T.: 0.000 min
 Response: 28496945
 Conc: 23.82 ng/ml



#11 alpha-Chlordane

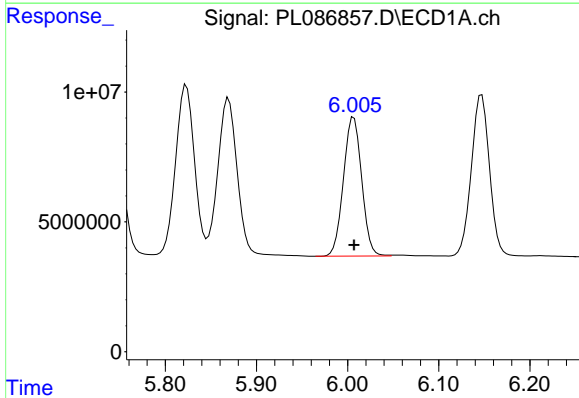
R.T.: 5.823 min
 Delta R.T.: 0.000 min
 Response: 95045280
 Conc: 24.52 ng/ml

Instrument :
 ECD_L
 ClientSampleId :
 PSTDICC025



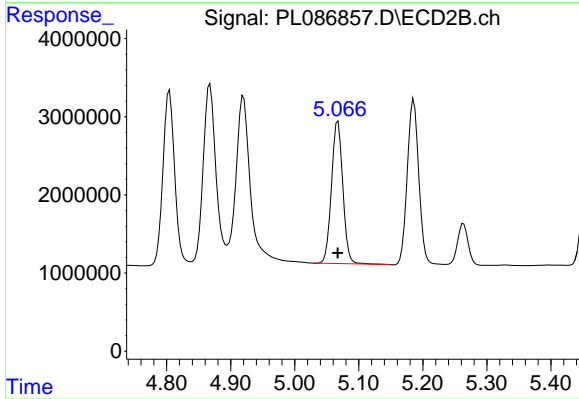
#11 alpha-Chlordane

R.T.: 4.868 min
 Delta R.T.: 0.000 min
 Response: 32151206
 Conc: 25.21 ng/ml



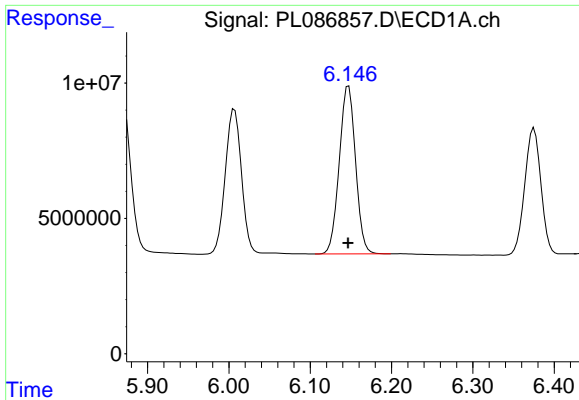
#12 4,4'-DDE

R.T.: 6.007 min
 Delta R.T.: 0.000 min
 Response: 74487574
 Conc: 23.71 ng/ml



#12 4,4'-DDE

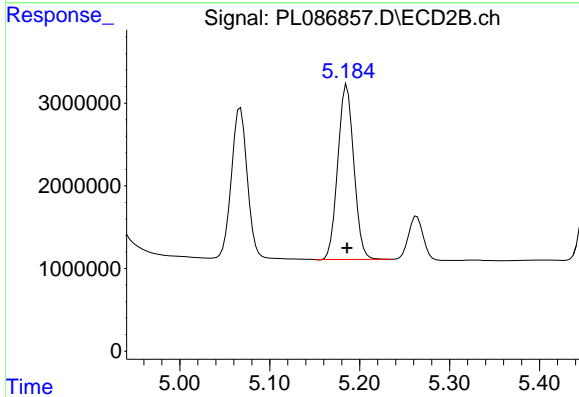
R.T.: 5.068 min
 Delta R.T.: 0.000 min
 Response: 22381346
 Conc: 22.95 ng/ml



#13 Dieldrin

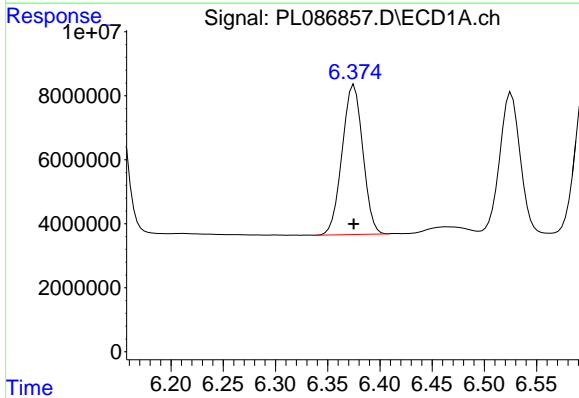
R.T.: 6.147 min
 Delta R.T.: 0.000 min
 Response: 86094225
 Conc: 23.86 ng/ml

Instrument :
 ECD_L
 ClientSampleId :
 PSTDICC025



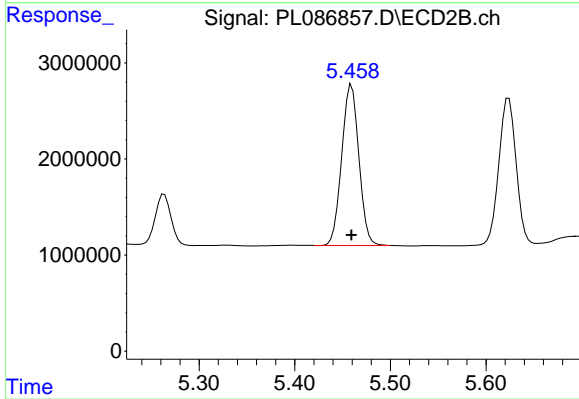
#13 Dieldrin

R.T.: 5.186 min
 Delta R.T.: 0.000 min
 Response: 26179928
 Conc: 23.16 ng/ml



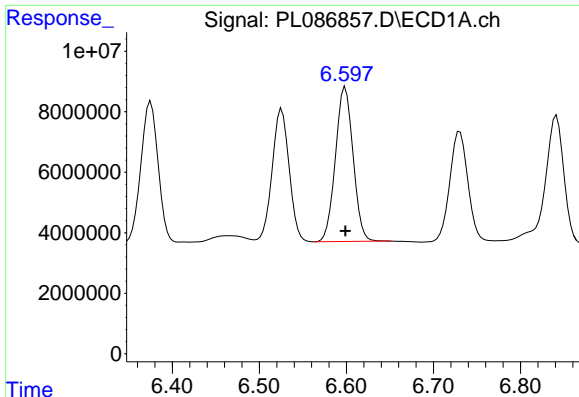
#14 Endrin

R.T.: 6.375 min
 Delta R.T.: 0.000 min
 Response: 64362238
 Conc: 24.22 ng/ml



#14 Endrin

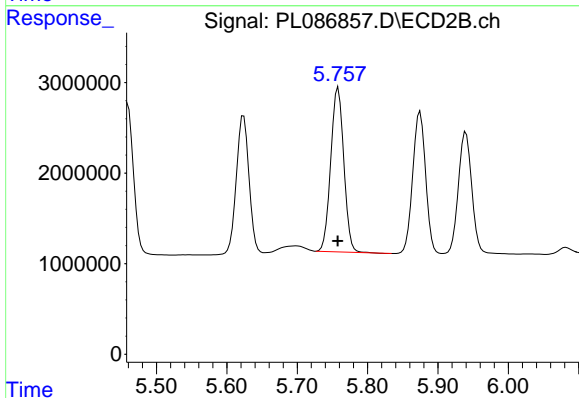
R.T.: 5.459 min
 Delta R.T.: 0.000 min
 Response: 20938952
 Conc: 23.64 ng/ml



#15 Endosulfan II

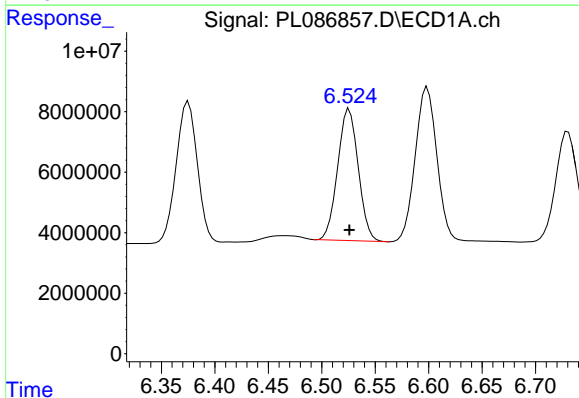
R.T.: 6.599 min
 Delta R.T.: 0.000 min
 Response: 71941428
 Conc: 24.46 ng/ml

Instrument :
 ECD_L
 ClientSampleId :
 PSTDICC025



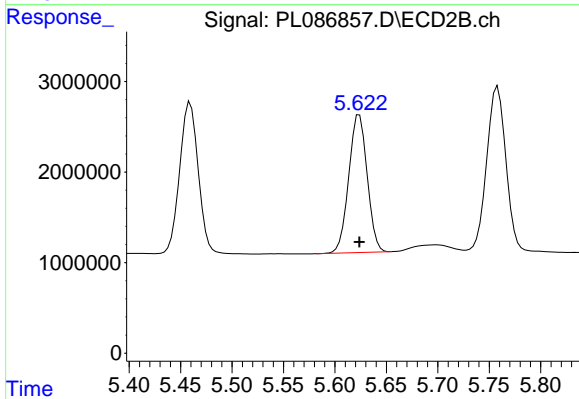
#15 Endosulfan II

R.T.: 5.758 min
 Delta R.T.: 0.000 min
 Response: 23408271
 Conc: 23.87 ng/ml



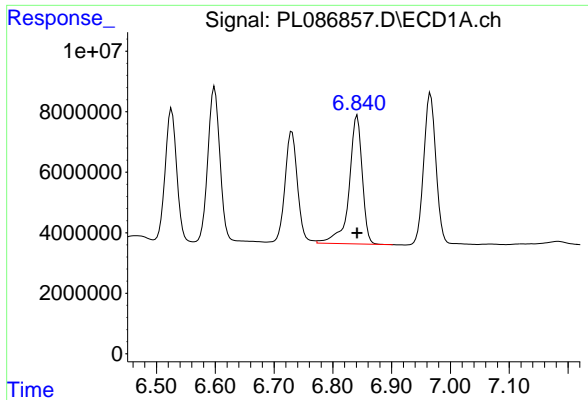
#16 4,4'-DDD

R.T.: 6.526 min
 Delta R.T.: 0.000 min
 Response: 58362504
 Conc: 23.76 ng/ml



#16 4,4'-DDD

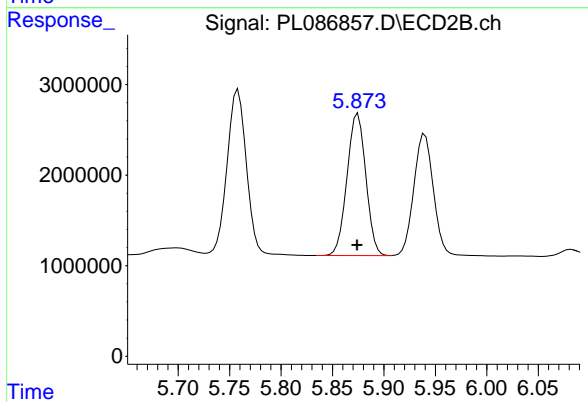
R.T.: 5.624 min
 Delta R.T.: 0.000 min
 Response: 19004387
 Conc: 23.18 ng/ml



#17 4,4'-DDT

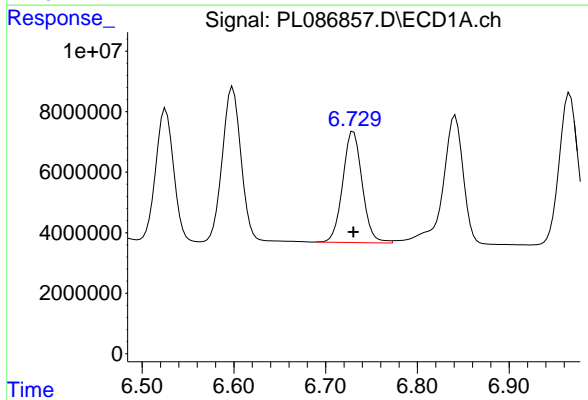
R.T.: 6.841 min
 Delta R.T.: 0.000 min
 Response: 65705179
 Conc: 24.64 ng/ml

Instrument :
 ECD_L
 ClientSampleId :
 PSTDICC025



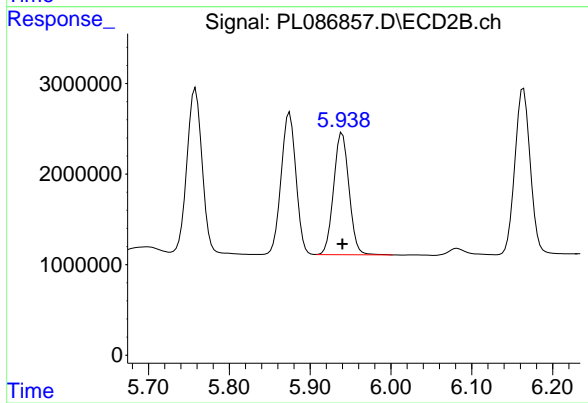
#17 4,4'-DDT

R.T.: 5.875 min
 Delta R.T.: 0.000 min
 Response: 19998145
 Conc: 23.25 ng/ml



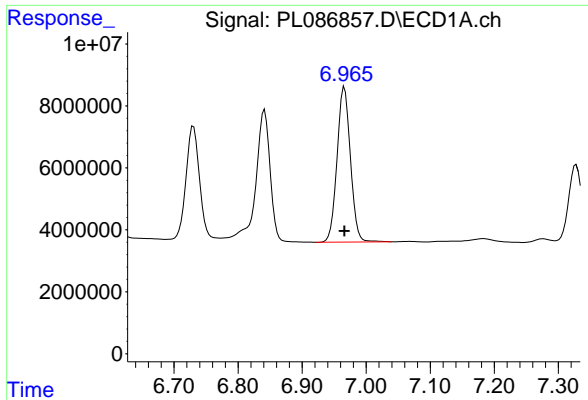
#18 Endrin aldehyde

R.T.: 6.730 min
 Delta R.T.: 0.000 min
 Response: 54086218
 Conc: 24.92 ng/ml



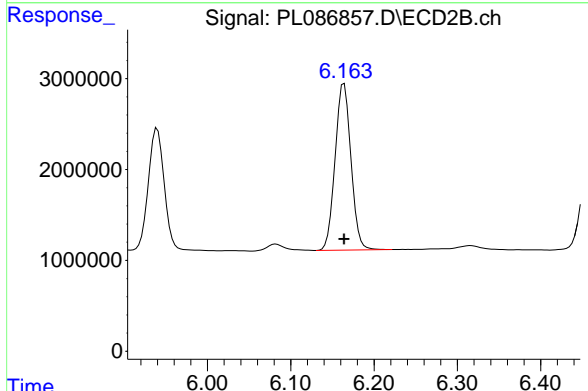
#18 Endrin aldehyde

R.T.: 5.940 min
 Delta R.T.: 0.000 min
 Response: 17807997
 Conc: 24.55 ng/ml

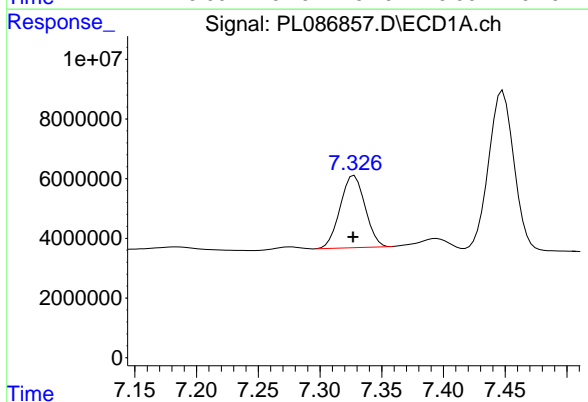


#19 Endosulfan Sulfate
 R.T.: 6.966 min
 Delta R.T.: 0.000 min
 Response: 72675376
 Conc: 24.71 ng/ml

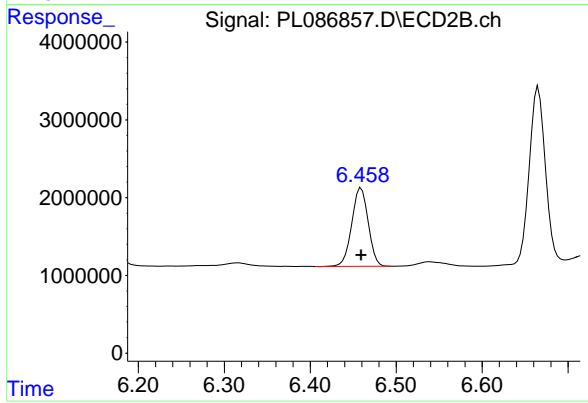
Instrument :
 ECD_L
 ClientSampleId :
 PSTDICC025



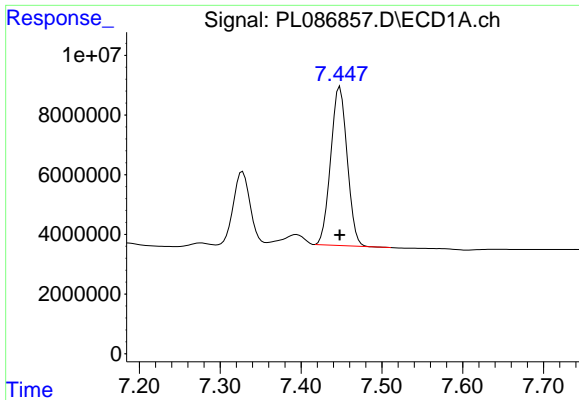
#19 Endosulfan Sulfate
 R.T.: 6.164 min
 Delta R.T.: 0.000 min
 Response: 24270268
 Conc: 24.40 ng/ml



#20 Methoxychlor
 R.T.: 7.328 min
 Delta R.T.: 0.000 min
 Response: 34007688
 Conc: 24.72 ng/ml

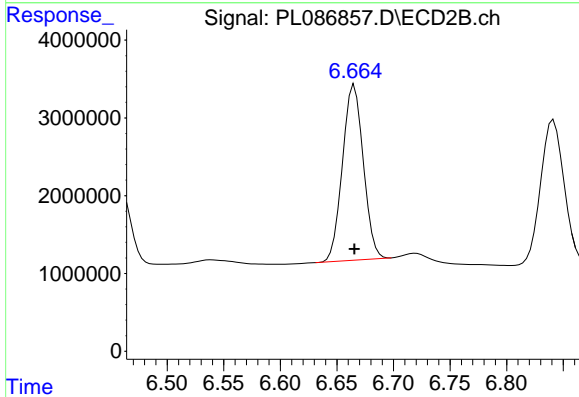


#20 Methoxychlor
 R.T.: 6.459 min
 Delta R.T.: 0.000 min
 Response: 13451795
 Conc: 24.86 ng/ml

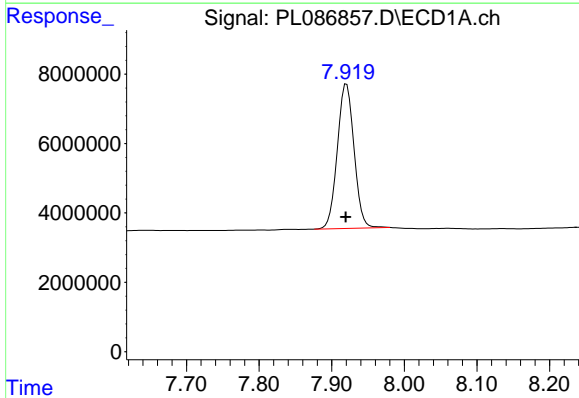


#21 Endrin ketone
 R.T.: 7.448 min
 Delta R.T.: 0.000 min
 Response: 75040394
 Conc: 23.97 ng/ml

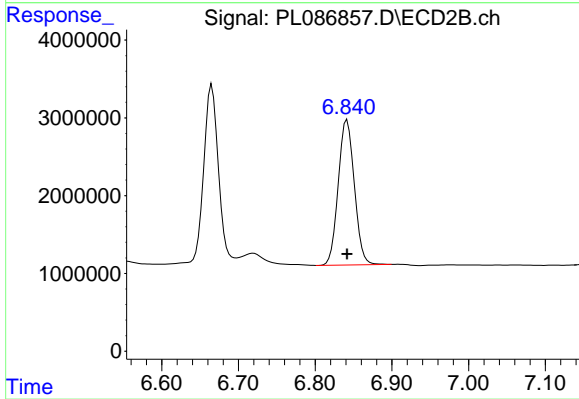
Instrument :
 ECD_L
 ClientSampleId :
 PSTDICC025



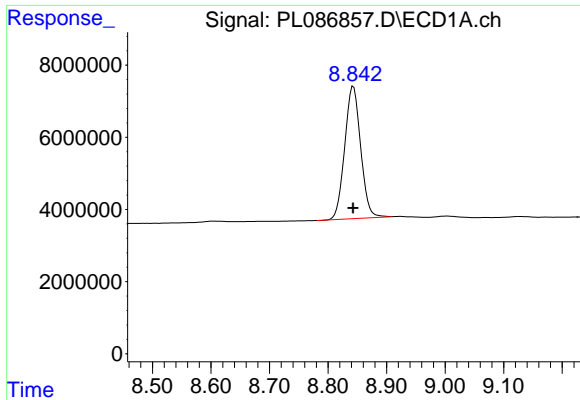
#21 Endrin ketone
 R.T.: 6.665 min
 Delta R.T.: 0.000 min
 Response: 28915306
 Conc: 23.86 ng/ml



#22 Mirex
 R.T.: 7.920 min
 Delta R.T.: 0.000 min
 Response: 66774552
 Conc: 25.64 ng/ml



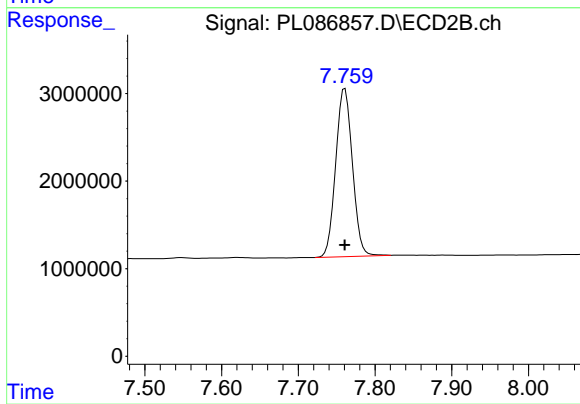
#22 Mirex
 R.T.: 6.841 min
 Delta R.T.: 0.000 min
 Response: 27312358
 Conc: 25.62 ng/ml



#28 Decachlorobiphenyl

R.T.: 8.843 min
Delta R.T.: 0.000 min
Response: 69482418
Conc: 25.76 ng/ml

Instrument :
ECD_L
ClientSampleId :
PSTDICC025



#28 Decachlorobiphenyl

R.T.: 7.761 min
Delta R.T.: 0.000 min
Response: 29114238
Conc: 26.08 ng/ml