

Data Path : Z:\pestpcbsrv\HPCHEM1\ECD_L\Data\PL113020\
 Data File : PL063263.D
 Signal(s) : Signal #1: ECD1A.ch Signal #2: ECD2B.ch
 Acq On : 30 Nov 2020 11:37
 Operator : DD\AJ
 Sample : PB133296BL
 Misc :
 ALS Vial : 5 Sample Multiplier: 1

Instrument :
 ECD_L
 ClientSampleId :
 PB133296BL

Integration File signal 1: autoint1.e
 Integration File signal 2: autoint2.e
 Quant Time: Dec 01 01:15:17 2020
 Quant Method : Z:\pestpcbsrv\HPCHEM1\ECD_L\methods\PL112320.M
 Quant Title : GC Extractables
 QLast Update : Tue Nov 24 01:53:58 2020
 Response via : Initial Calibration
 Integrator: ChemStation

Volume Inj. : 1 µl
 Signal #1 Phase : ZB-MR2 Signal #2 Phase: ZB-MR1
 Signal #1 Info : 30M x 0.32mm x0.2 Signal #2 Info : 30M x 0.32mm x0.5µm

Compound	RT#1	RT#2	Resp#1	Resp#2	ng/ml	ng/ml

System Monitoring Compounds						
1) SA Tetrachlo...	3.418	3.951	32949017	61564761	19.347	18.863
28) SA Decachlor...	8.139	9.000	35599973	47300641	19.063	19.881

Target Compounds

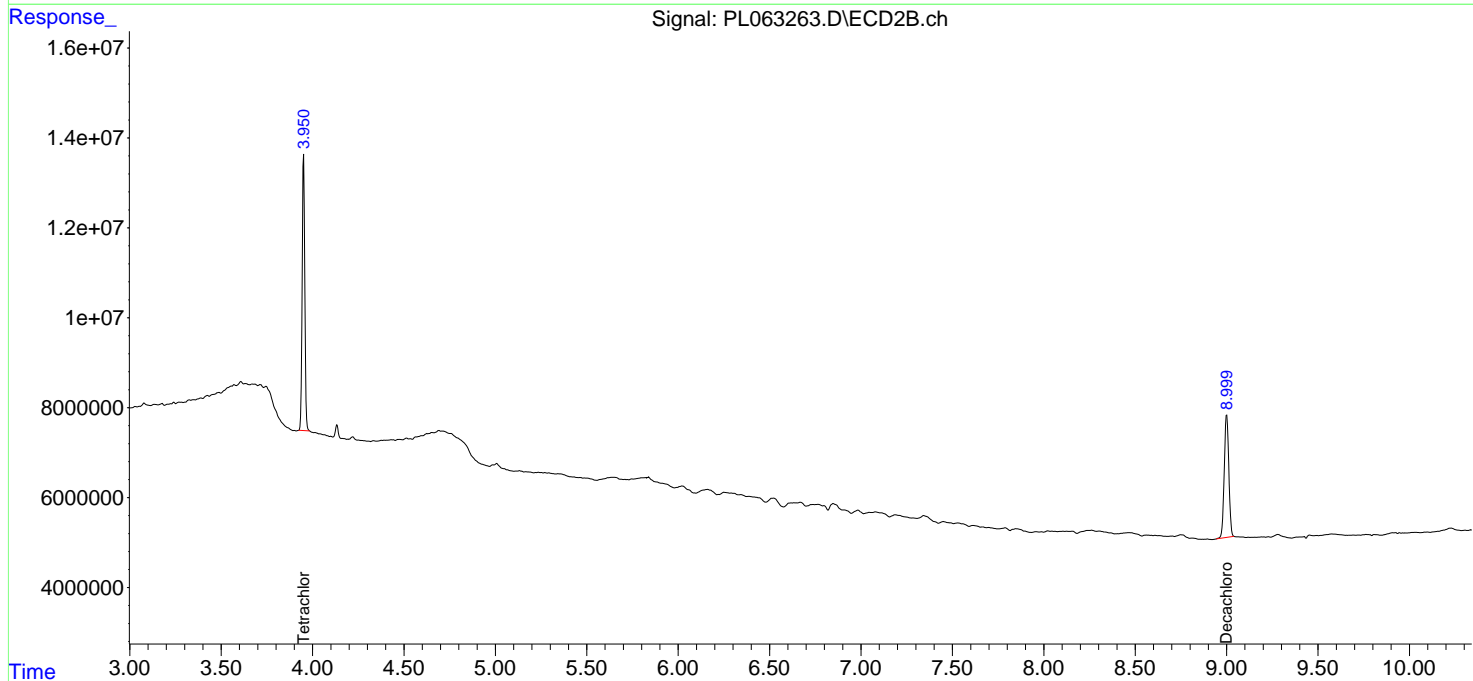
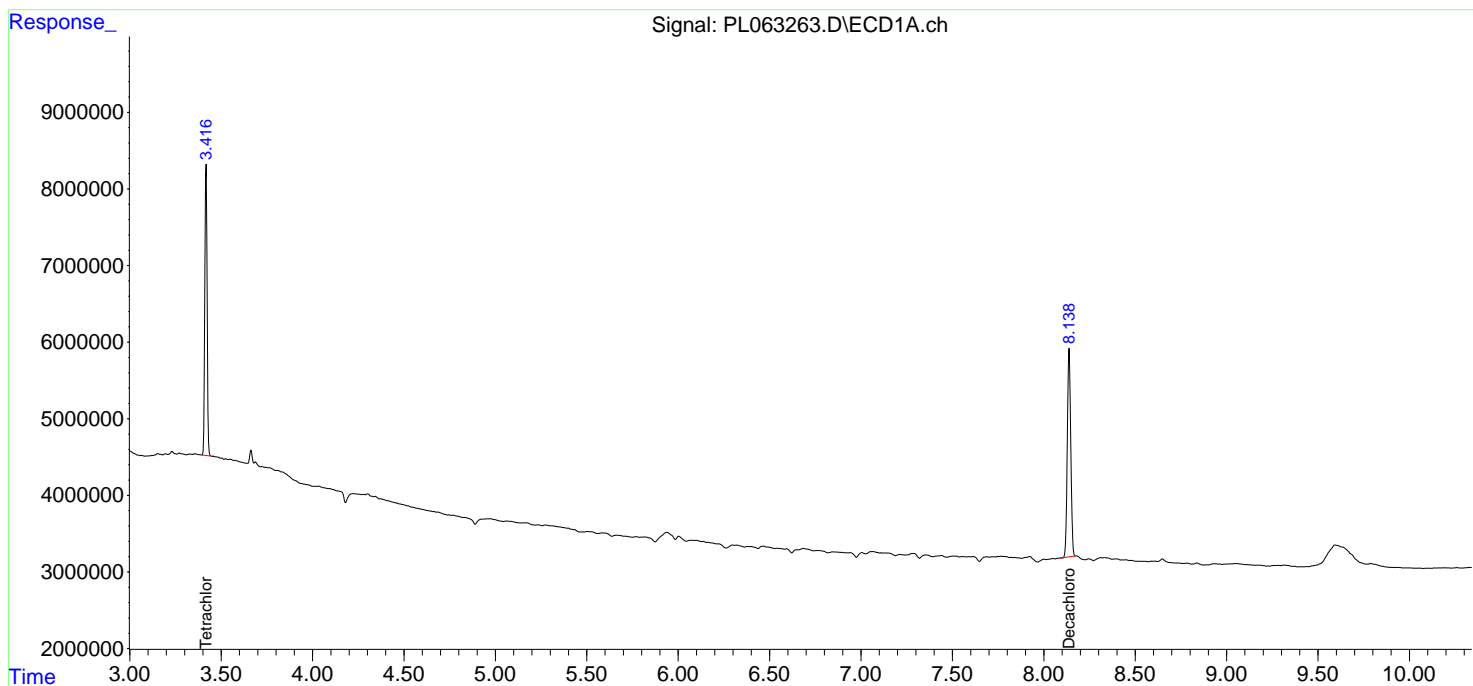
(f)=RT Delta > 1/2 Window (#)=Amounts differ by > 25% (m)=manual int.

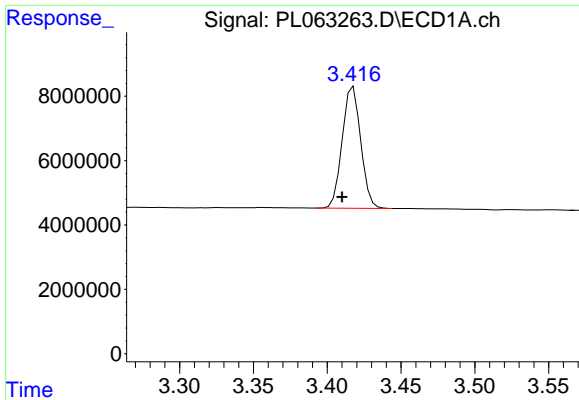
Data Path : Z:\pestpcbsrv\HPCHEM1\ECD_L\Data\PL113020\
 Data File : PL063263.D
 Signal(s) : Signal #1: ECD1A.ch Signal #2: ECD2B.ch
 Acq On : 30 Nov 2020 11:37
 Operator : DD\AJ
 Sample : PB133296BL
 Misc :
 ALS Vial : 5 Sample Multiplier: 1

Instrument :
 ECD_L
 ClientSampleID :
 PB133296BL

Integration File signal 1: autoint1.e
 Integration File signal 2: autoint2.e
 Quant Time: Dec 01 01:15:17 2020
 Quant Method : Z:\pestpcbsrv\HPCHEM1\ECD_L\methods\PL112320.M
 Quant Title : GC Extractables
 QLast Update : Tue Nov 24 01:53:58 2020
 Response via : Initial Calibration
 Integrator: ChemStation

Volume Inj. : 1 µl
 Signal #1 Phase : ZB-MR2 Signal #2 Phase: ZB-MR1
 Signal #1 Info : 30M x 0.32mm x0.2 Signal #2 Info : 30M x 0.32mm x0.5µm

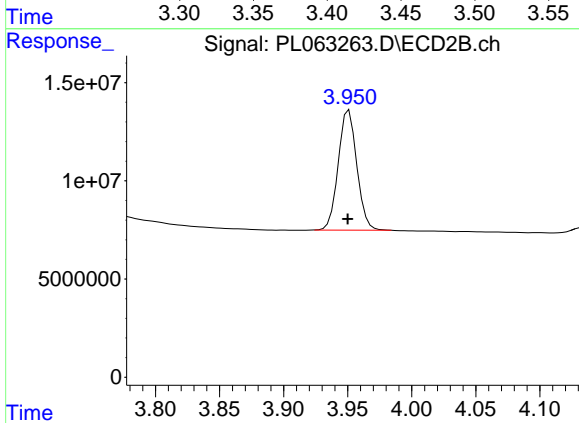




#1 Tetrachloro-m-xylene

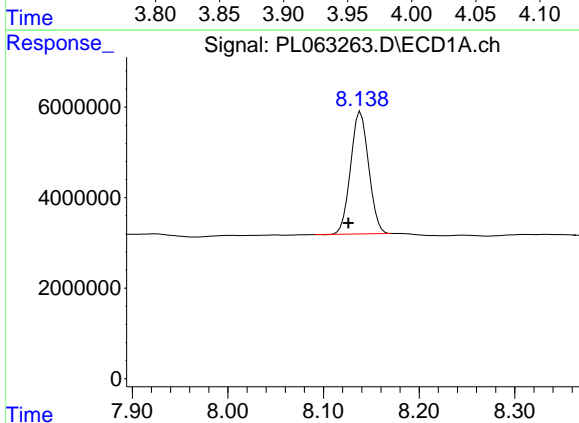
R.T.: 3.418 min
 Delta R.T.: 0.008 min
 Response: 32949017
 Conc: 19.35 ng/ml

Instrument :
 ECD_L
 ClientSampled :
 PB133296BL



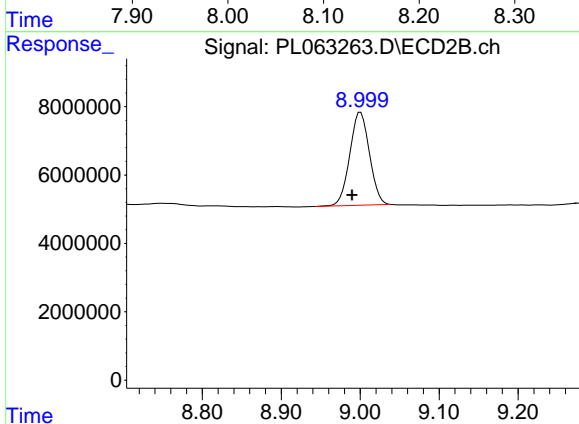
#1 Tetrachloro-m-xylene

R.T.: 3.951 min
 Delta R.T.: 0.001 min
 Response: 61564761
 Conc: 18.86 ng/ml



#28 Decachlorobiphenyl

R.T.: 8.139 min
 Delta R.T.: 0.013 min
 Response: 35599973
 Conc: 19.06 ng/ml



#28 Decachlorobiphenyl

R.T.: 9.000 min
 Delta R.T.: 0.011 min
 Response: 47300641
 Conc: 19.88 ng/ml