

Data Path : Z:\pestpcbsrv\HPCHEM1\ECD_L\Data\PL113021\
 Data File : PL071194.D
 Signal(s) : Signal #1: ECD1A.ch Signal #2: ECD2B.ch
 Acq On : 30 Nov 2021 12:14
 Operator : AR\AJ
 Sample : PSTDIC050
 Misc :
 ALS Vial : 7 Sample Multiplier: 1

Instrument :
 ECD_L
 ClientSampleId :

Integration File signal 1: autoint1.e
 Integration File signal 2: autoint2.e
 Quant Time: Nov 30 13:55:42 2021
 Quant Method : Z:\pestpcbsrv\HPCHEM1\ECD_L\methods\PL113021.M
 Quant Title : GC Extractables
 QLast Update : Tue Nov 30 13:54:22 2021
 Response via : Initial Calibration
 Integrator: ChemStation

Volume Inj. : 1 µl
 Signal #1 Phase : ZB-MR2 Signal #2 Phase: ZB-MR1
 Signal #1 Info : 30M x 0.32mm x0.2 Signal #2 Info : 30M x 0.32mm x0.5µm

| Compound | RT#1 | RT#2 | Resp#1 | Resp#2 | ng/ml | ng/ml |
|-----------------------------|--------|--------|----------|----------|--------|--------|
| ----- | | | | | | |
| System Monitoring Compounds | | | | | | |
| 1) SA Tetrachlo... | 4.564 | 5.500 | 22891243 | 62240033 | 50.000 | 50.000 |
| 28) SA Decachlor... | 10.327 | 11.390 | 34743288 | 69771389 | 50.000 | 50.000 |
| Target Compounds | | | | | | |
| 2) A alpha-BHC | 5.271 | 6.080 | 31971432 | 93689072 | 50.000 | 50.000 |
| 3) MA gamma-BHC... | 5.694 | 6.476 | 32052690 | 88636385 | 50.000 | 50.000 |
| 4) MA Heptachlor | 6.101 | 7.123 | 34796143 | 91957059 | 50.000 | 50.000 |
| 5) MB Aldrin | 6.425 | 7.493 | 30952881 | 84648130 | 50.000 | 50.000 |
| 6) B beta-BHC | 6.076 | 6.733 | 14707536 | 42022046 | 50.000 | 50.000 |
| 7) B delta-BHC | 6.336 | 6.999 | 32037389 | 86159529 | 50.000 | 50.000 |
| 8) B Heptachlo... | 7.002 | 7.959 | 30714744 | 79475984 | 50.000 | 50.000 |
| 9) A Endosulfan I | 7.404 | 8.364 | 29260972 | 75428009 | 50.000 | 50.000 |
| 10) B gamma-Chl... | 7.279 | 8.229 | 31217404 | 80098853 | 50.000 | 50.000 |
| 11) B alpha-Chl... | 7.348 | 8.309 | 31490785 | 79295221 | 50.000 | 50.000 |
| 12) B 4,4'-DDE | 7.564 | 8.499 | 28156302 | 77186521 | 50.000 | 50.000 |
| 13) MA Dieldrin | 7.690 | 8.653 | 30159230 | 77849953 | 50.000 | 50.000 |
| 14) MA Endrin | 7.981 | 8.892 | 27901544 | 67344267 | 50.000 | 50.000 |
| 15) B Endosulfa... | 8.293 | 9.127 | 28460255 | 66171516 | 50.000 | 50.000 |
| 16) A 4,4'-DDD | 8.150 | 9.039 | 24728157 | 58985286 | 50.000 | 50.000 |
| 17) MA 4,4'-DDT | 8.409 | 9.355 | 27431196 | 69468650 | 50.000 | 50.000 |
| 18) B Endrin al... | 8.481 | 9.262 | 22407640 | 51468870 | 50.000 | 50.000 |
| 19) B Endosulfa... | 8.712 | 9.500 | 29696933 | 65391628 | 50.000 | 50.000 |
| 20) A Methoxychlor | 9.006 | 9.842 | 17588914 | 36169214 | 50.000 | 50.000 |
| 21) B Endrin ke... | 9.230 | 9.996 | 35095736 | 72932755 | 50.000 | 50.000 |
| 22) Mirex | 9.414 | 10.460 | 29642862 | 54278750 | 50.000 | 50.000 |

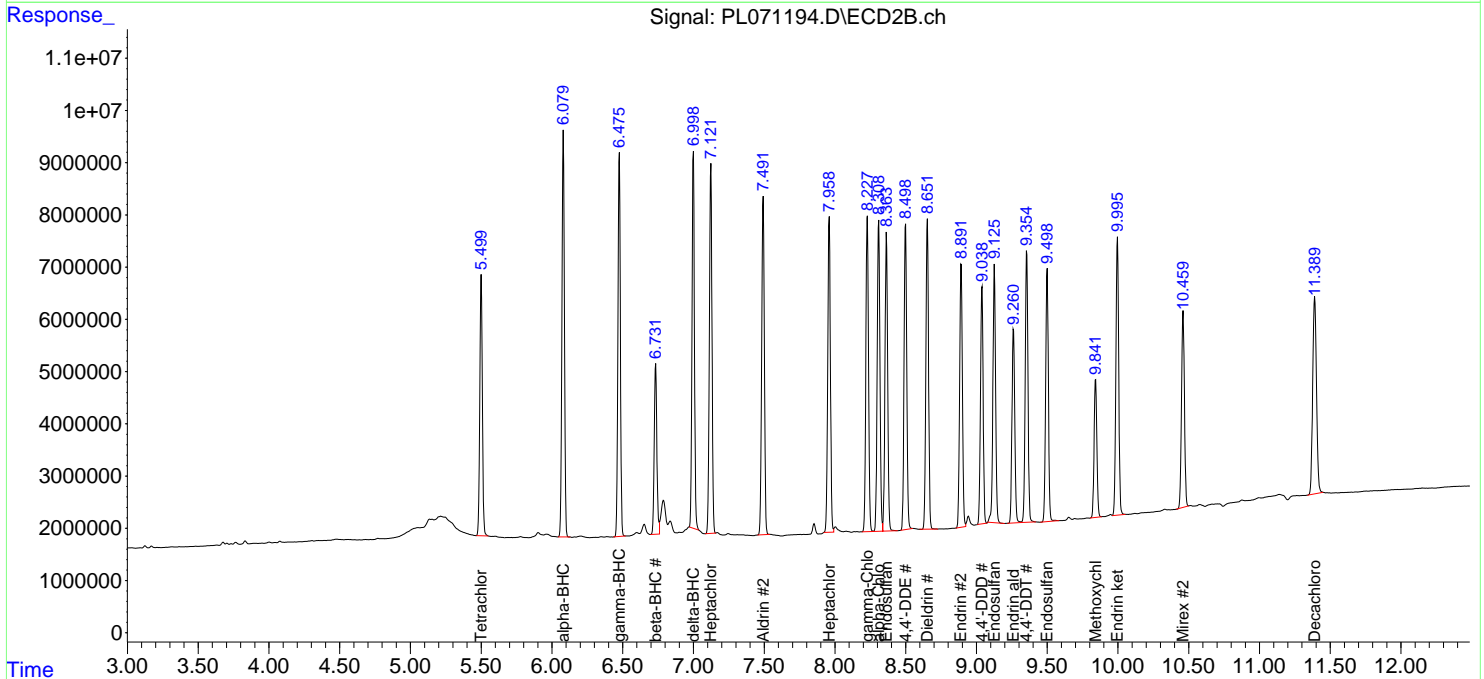
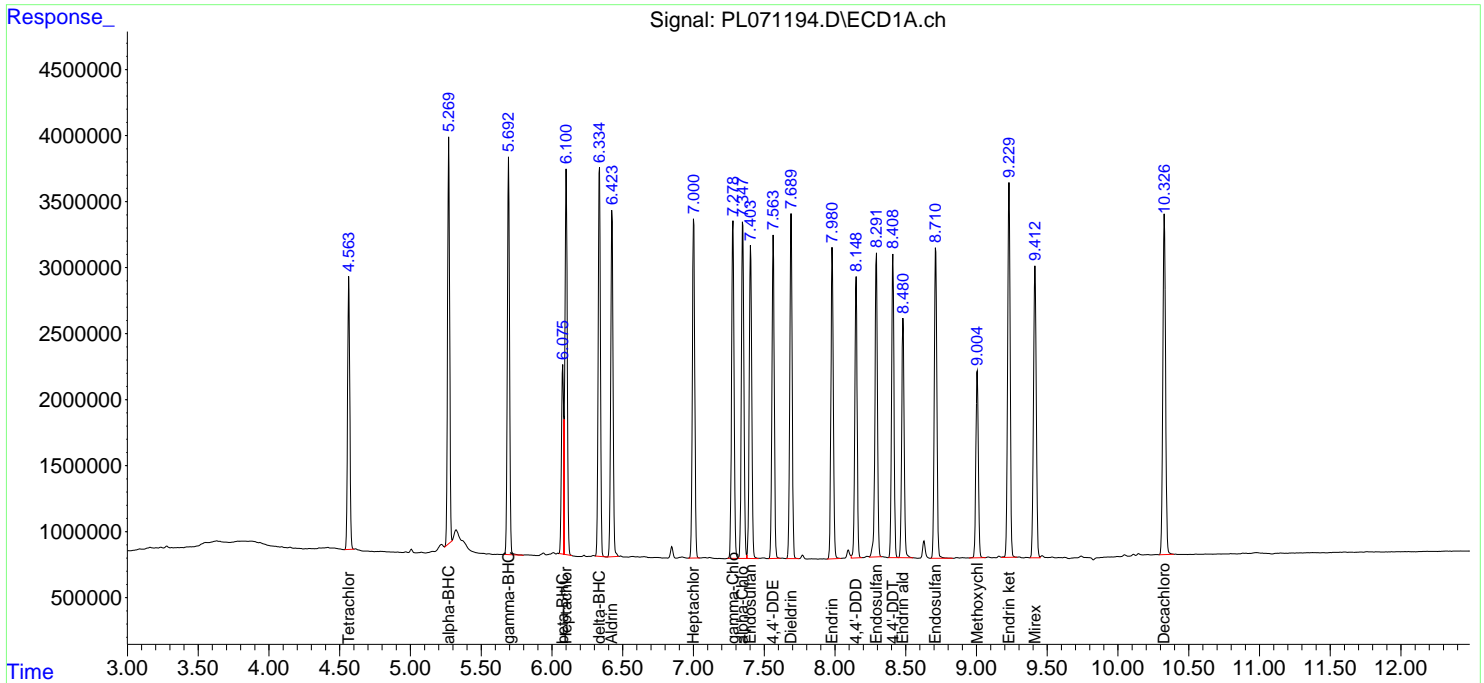
(f)=RT Delta > 1/2 Window (#)=Amounts differ by > 25% (m)=manual int.

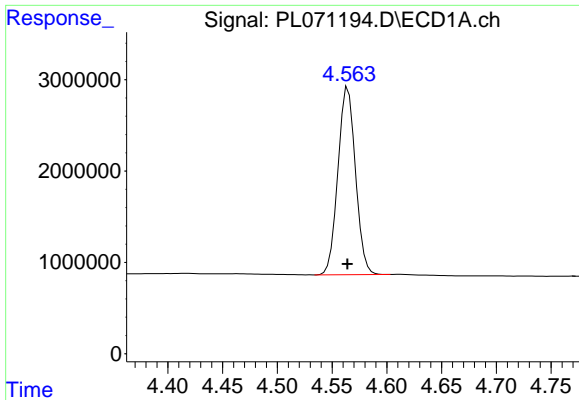
Data Path : Z:\pestpcbsrv\HPCHEM1\ECD_L\Data\PL113021\
 Data File : PL071194.D
 Signal(s) : Signal #1: ECD1A.ch Signal #2: ECD2B.ch
 Acq On : 30 Nov 2021 12:14
 Operator : AR\AJ
 Sample : PSTDICC050
 Misc :
 ALS Vial : 7 Sample Multiplier: 1

Instrument :
 ECD_L
 ClientSampleId :

Integration File signal 1: autoint1.e
 Integration File signal 2: autoint2.e
 Quant Time: Nov 30 13:55:42 2021
 Quant Method : Z:\pestpcbsrv\HPCHEM1\ECD_L\methods\PL113021.M
 Quant Title : GC Extractables
 QLast Update : Tue Nov 30 13:54:22 2021
 Response via : Initial Calibration
 Integrator: ChemStation

Volume Inj. : 1 µl
 Signal #1 Phase : ZB-MR2 Signal #2 Phase: ZB-MR1
 Signal #1 Info : 30M x 0.32mm x0.2 Signal #2 Info : 30M x 0.32mm x0.5µm

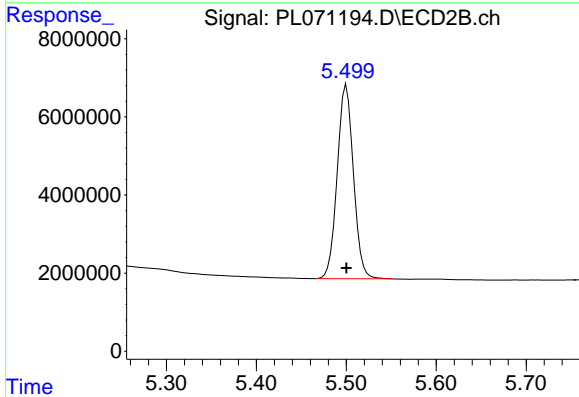




#1 Tetrachloro-m-xylene

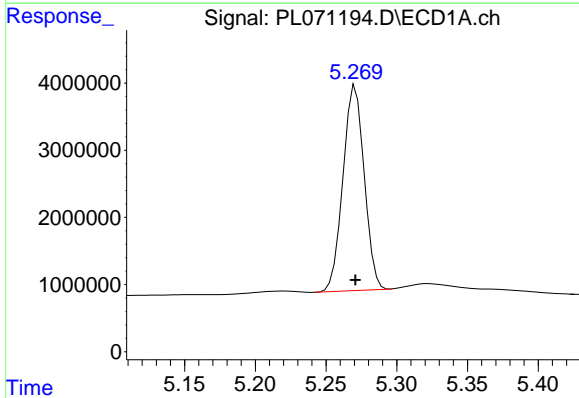
R.T.: 4.564 min
 Delta R.T.: 0.000 min
 Response: 22891243
 Conc: 50.00 ng/ml

Instrument :
 ECD_L
 ClientSampleId :



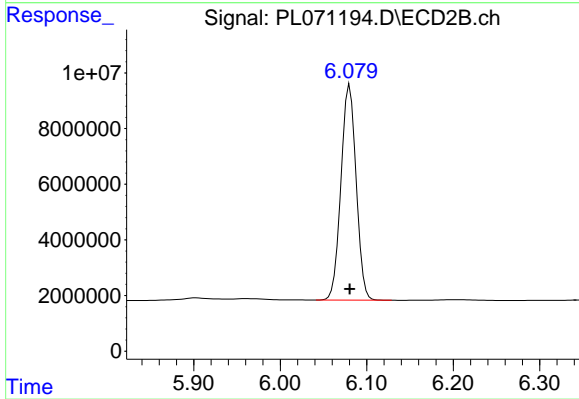
#1 Tetrachloro-m-xylene

R.T.: 5.500 min
 Delta R.T.: 0.000 min
 Response: 62240033
 Conc: 50.00 ng/ml



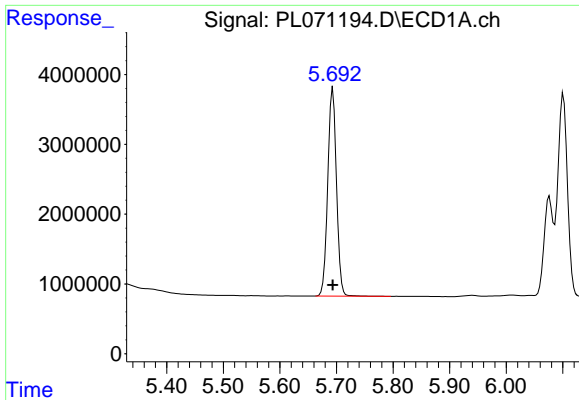
#2 alpha-BHC

R.T.: 5.271 min
 Delta R.T.: 0.000 min
 Response: 31971432
 Conc: 50.00 ng/ml



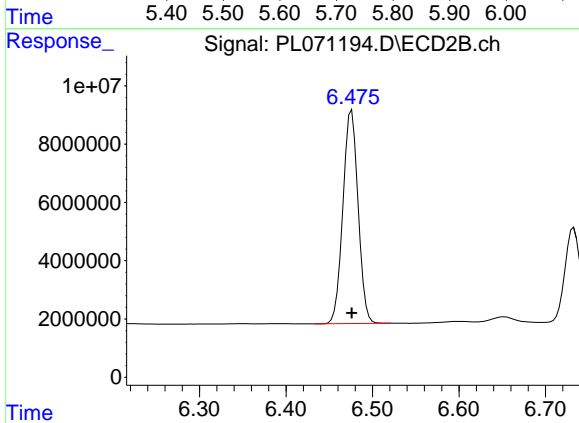
#2 alpha-BHC

R.T.: 6.080 min
 Delta R.T.: 0.000 min
 Response: 93689072
 Conc: 50.00 ng/ml

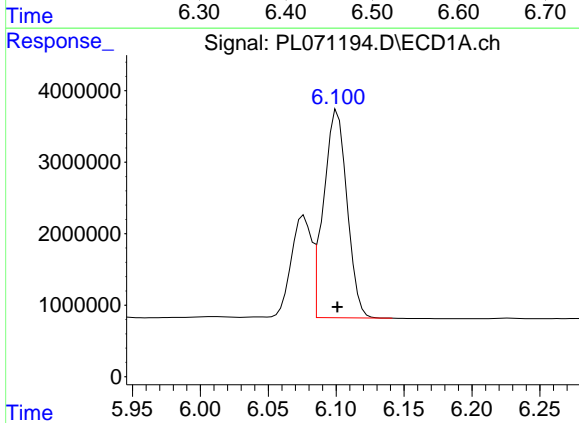


#3 gamma-BHC (Lindane)
 R.T.: 5.694 min
 Delta R.T.: 0.000 min
 Response: 32052690
 Conc: 50.00 ng/ml

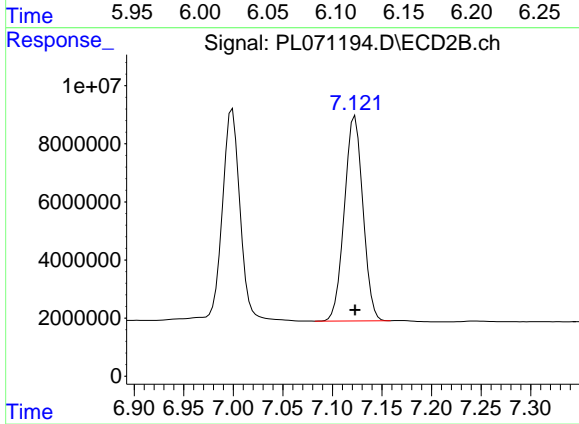
Instrument :
 ECD_L
 ClientSampleId :



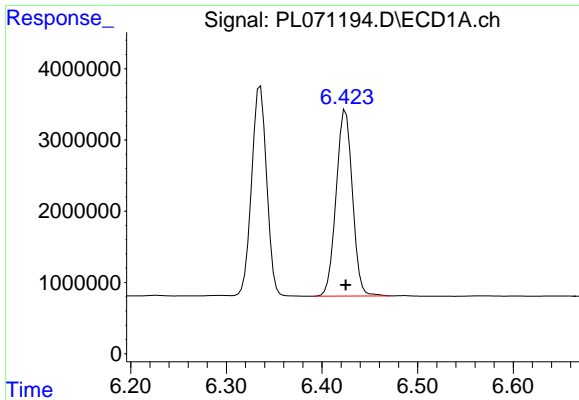
#3 gamma-BHC (Lindane)
 R.T.: 6.476 min
 Delta R.T.: 0.000 min
 Response: 88636385
 Conc: 50.00 ng/ml



#4 Heptachlor
 R.T.: 6.101 min
 Delta R.T.: 0.000 min
 Response: 34796143
 Conc: 50.00 ng/ml

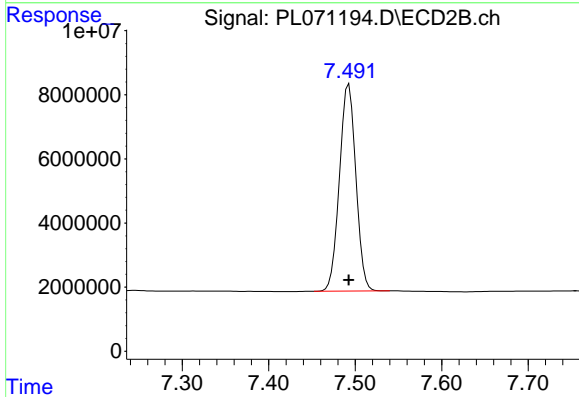


#4 Heptachlor
 R.T.: 7.123 min
 Delta R.T.: 0.000 min
 Response: 91957059
 Conc: 50.00 ng/ml

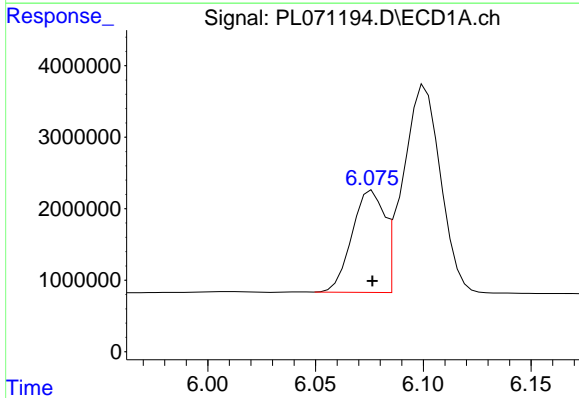


#5 Aldrin
 R.T.: 6.425 min
 Delta R.T.: 0.000 min
 Response: 30952881
 Conc: 50.00 ng/ml

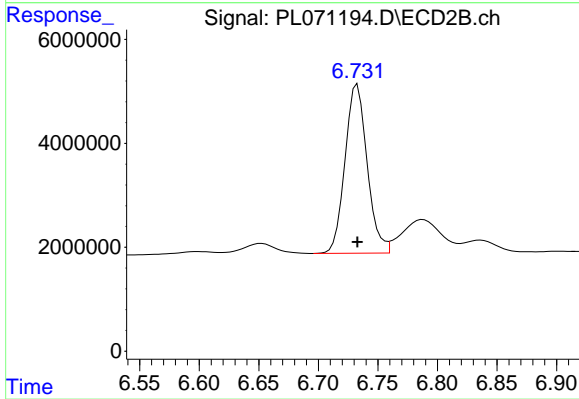
Instrument :
 ECD_L
 ClientSampleId :



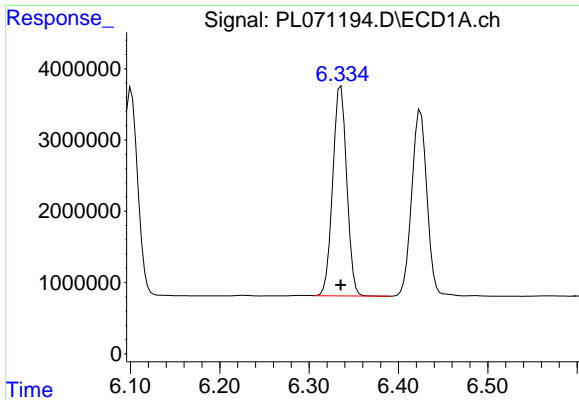
#5 Aldrin
 R.T.: 7.493 min
 Delta R.T.: 0.000 min
 Response: 84648130
 Conc: 50.00 ng/ml



#6 beta-BHC
 R.T.: 6.076 min
 Delta R.T.: 0.000 min
 Response: 14707536
 Conc: 50.00 ng/ml



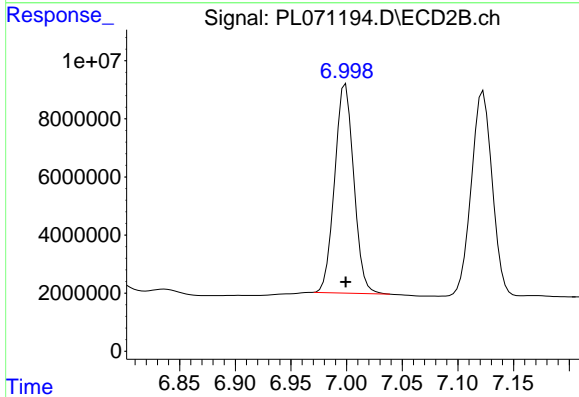
#6 beta-BHC
 R.T.: 6.733 min
 Delta R.T.: 0.000 min
 Response: 42022046
 Conc: 50.00 ng/ml



#7 delta-BHC

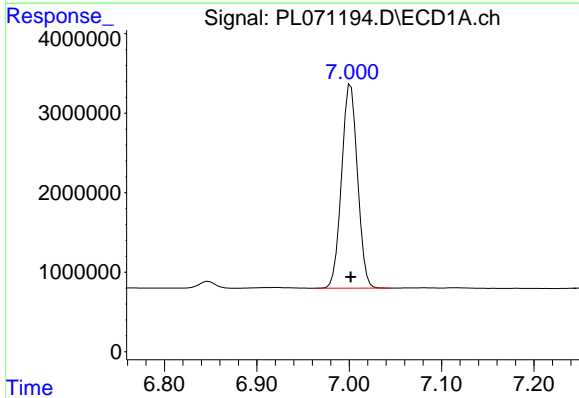
R.T.: 6.336 min
 Delta R.T.: 0.000 min
 Response: 32037389
 Conc: 50.00 ng/ml

Instrument :
 ECD_L
 ClientSampleId :



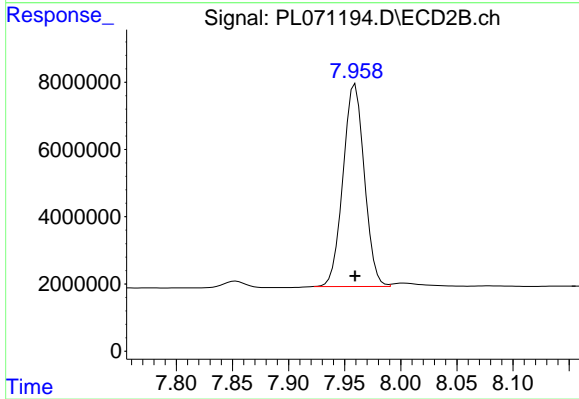
#7 delta-BHC

R.T.: 6.999 min
 Delta R.T.: 0.000 min
 Response: 86159529
 Conc: 50.00 ng/ml



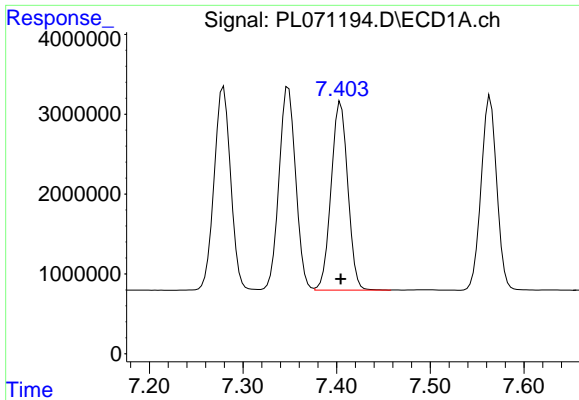
#8 Heptachlor epoxide

R.T.: 7.002 min
 Delta R.T.: 0.000 min
 Response: 30714744
 Conc: 50.00 ng/ml



#8 Heptachlor epoxide

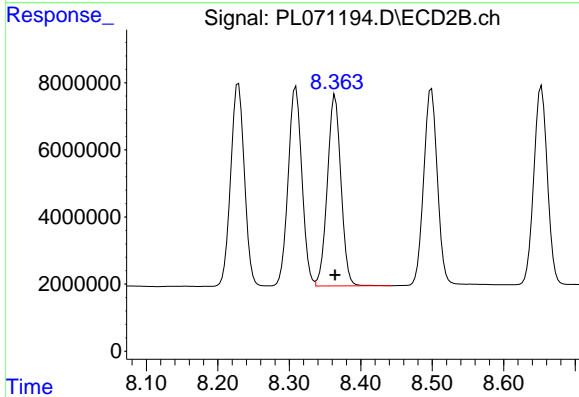
R.T.: 7.959 min
 Delta R.T.: 0.000 min
 Response: 79475984
 Conc: 50.00 ng/ml



#9 Endosulfan I

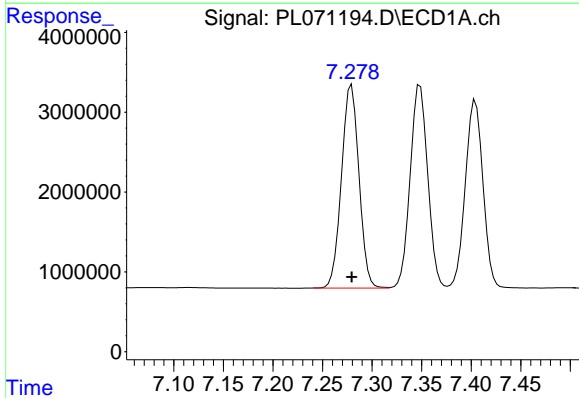
R.T.: 7.404 min
 Delta R.T.: 0.000 min
 Response: 29260972
 Conc: 50.00 ng/ml

Instrument :
 ECD_L
 ClientSampleId :



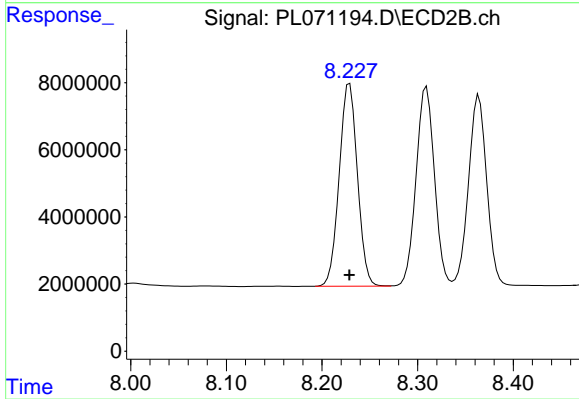
#9 Endosulfan I

R.T.: 8.364 min
 Delta R.T.: 0.000 min
 Response: 75428009
 Conc: 50.00 ng/ml



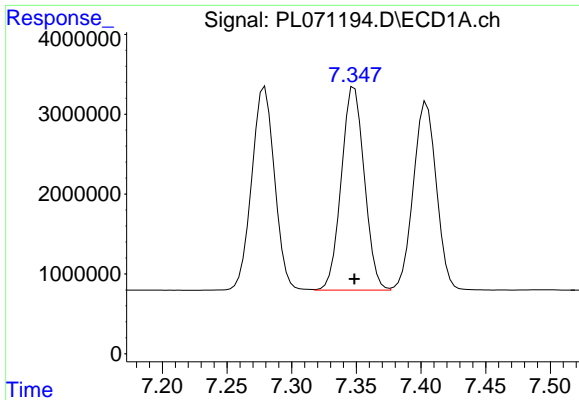
#10 gamma-Chlordane

R.T.: 7.279 min
 Delta R.T.: 0.000 min
 Response: 31217404
 Conc: 50.00 ng/ml



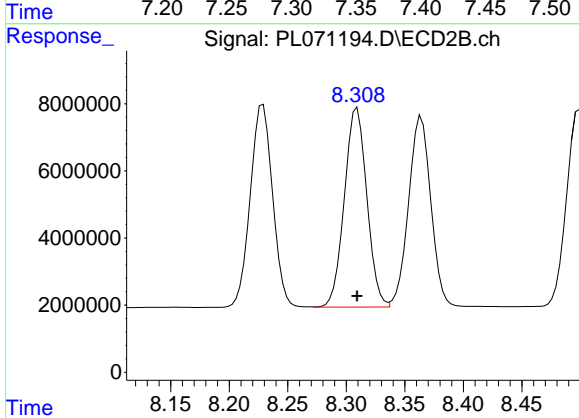
#10 gamma-Chlordane

R.T.: 8.229 min
 Delta R.T.: 0.000 min
 Response: 80098853
 Conc: 50.00 ng/ml

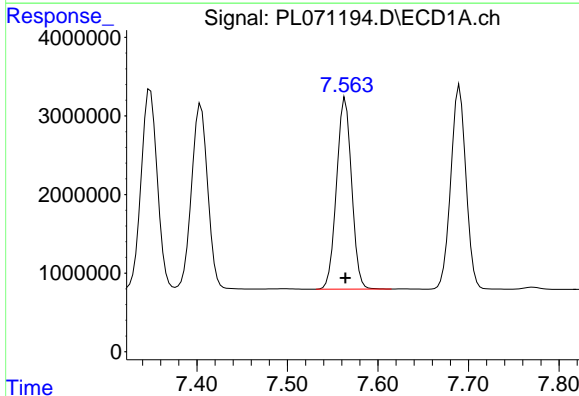


#11 alpha-Chlordane
 R.T.: 7.348 min
 Delta R.T.: 0.000 min
 Response: 31490785
 Conc: 50.00 ng/ml

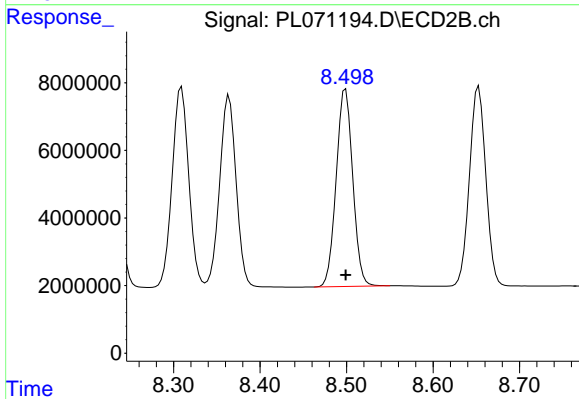
Instrument :
 ECD_L
 ClientSampleId :



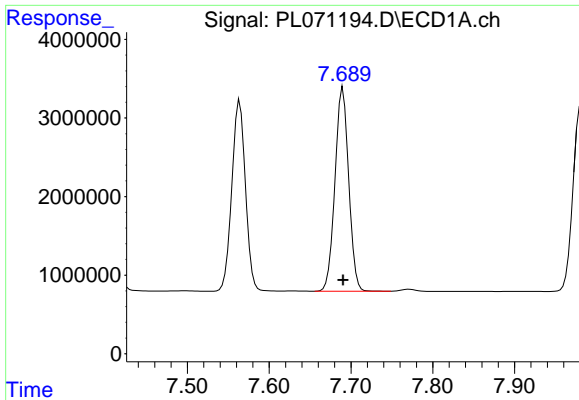
#11 alpha-Chlordane
 R.T.: 8.309 min
 Delta R.T.: 0.000 min
 Response: 79295221
 Conc: 50.00 ng/ml



#12 4,4'-DDE
 R.T.: 7.564 min
 Delta R.T.: 0.000 min
 Response: 28156302
 Conc: 50.00 ng/ml



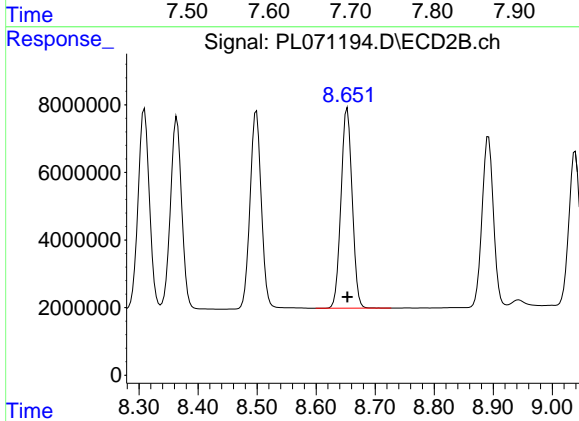
#12 4,4'-DDE
 R.T.: 8.499 min
 Delta R.T.: 0.000 min
 Response: 77186521
 Conc: 50.00 ng/ml



#13 Dieldrin

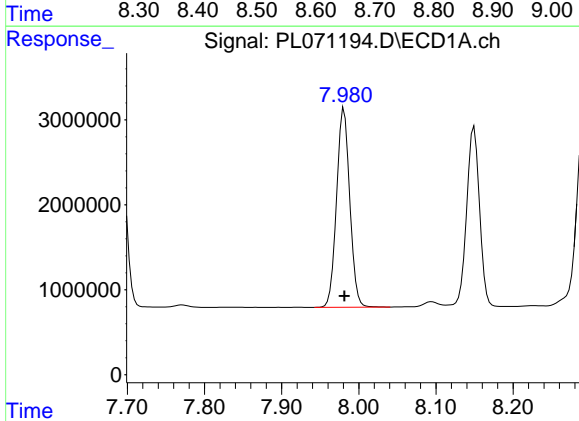
R.T.: 7.690 min
 Delta R.T.: 0.000 min
 Response: 30159230
 Conc: 50.00 ng/ml

Instrument :
 ECD_L
 ClientSampleId :



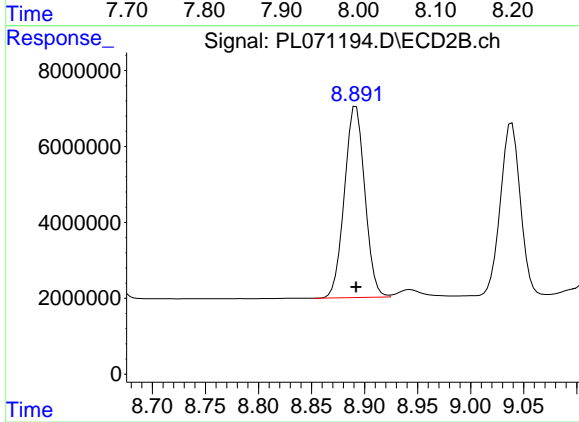
#13 Dieldrin

R.T.: 8.653 min
 Delta R.T.: 0.000 min
 Response: 77849953
 Conc: 50.00 ng/ml



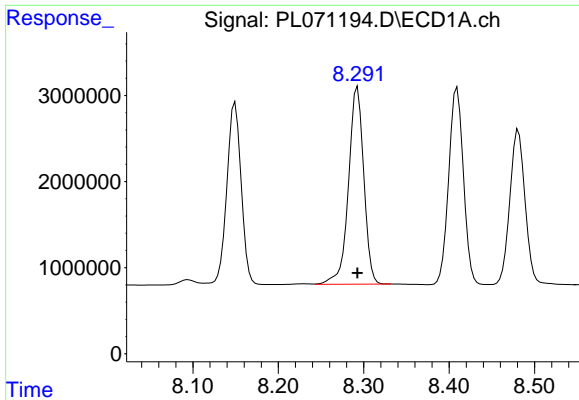
#14 Endrin

R.T.: 7.981 min
 Delta R.T.: 0.000 min
 Response: 27901544
 Conc: 50.00 ng/ml



#14 Endrin

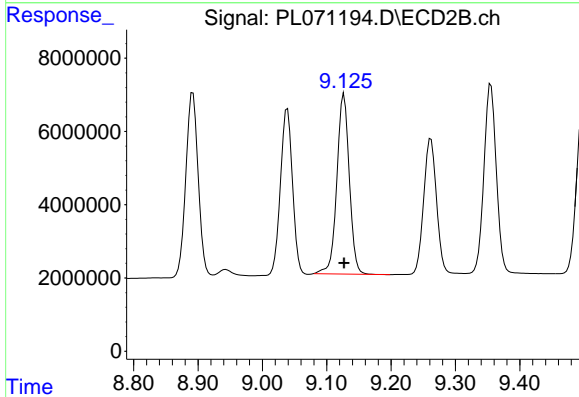
R.T.: 8.892 min
 Delta R.T.: 0.000 min
 Response: 67344267
 Conc: 50.00 ng/ml



#15 Endosulfan II

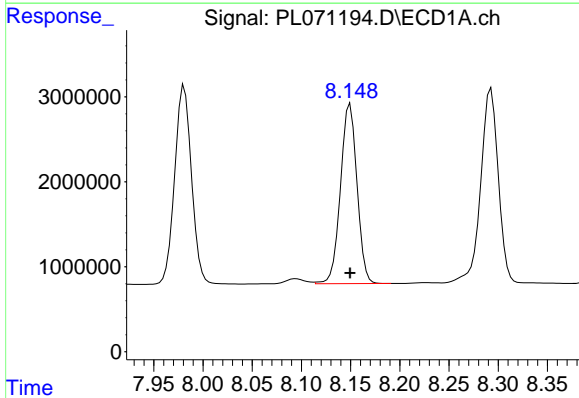
R.T.: 8.293 min
 Delta R.T.: 0.000 min
 Response: 28460255
 Conc: 50.00 ng/ml

Instrument :
 ECD_L
 ClientSampleId :



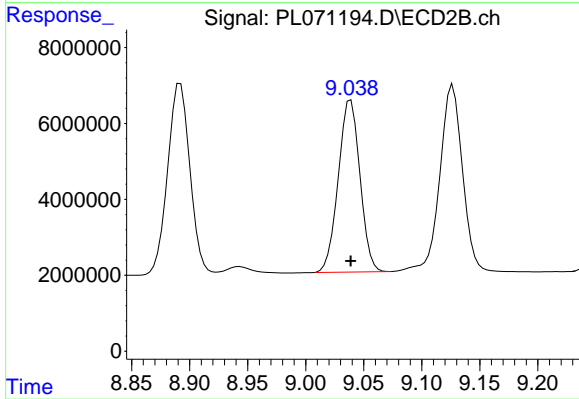
#15 Endosulfan II

R.T.: 9.127 min
 Delta R.T.: 0.000 min
 Response: 66171516
 Conc: 50.00 ng/ml



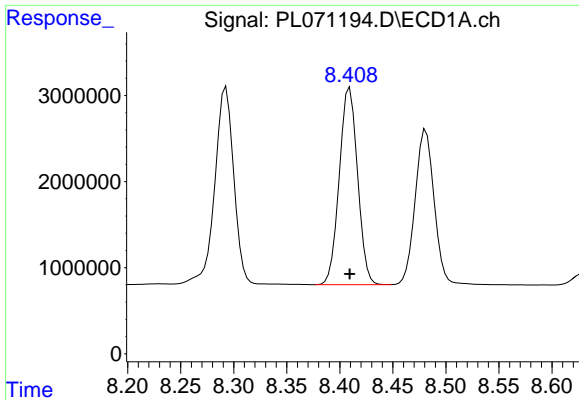
#16 4,4'-DDD

R.T.: 8.150 min
 Delta R.T.: 0.000 min
 Response: 24728157
 Conc: 50.00 ng/ml



#16 4,4'-DDD

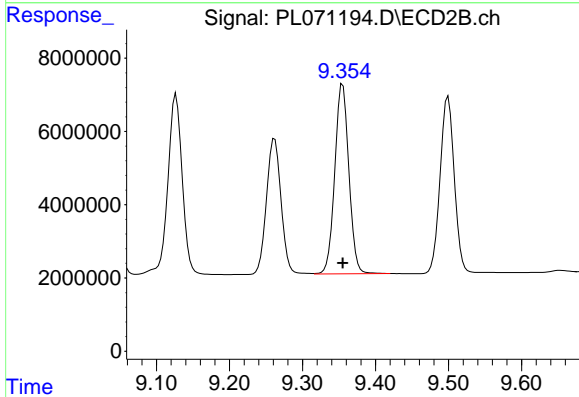
R.T.: 9.039 min
 Delta R.T.: 0.000 min
 Response: 58985286
 Conc: 50.00 ng/ml



#17 4,4'-DDT

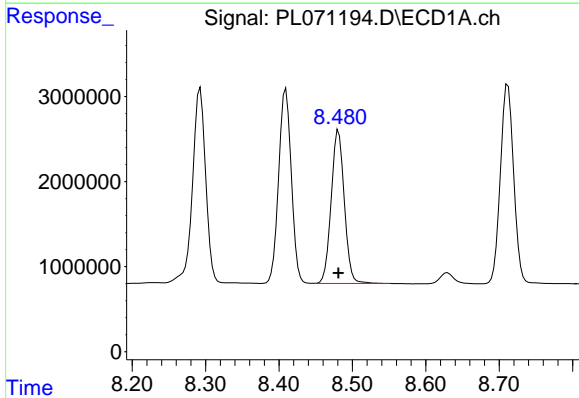
R.T.: 8.409 min
 Delta R.T.: 0.000 min
 Response: 27431196
 Conc: 50.00 ng/ml

Instrument :
 ECD_L
 ClientSampleId :



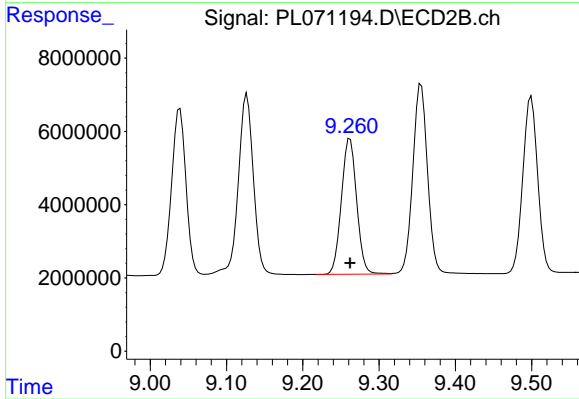
#17 4,4'-DDT

R.T.: 9.355 min
 Delta R.T.: 0.000 min
 Response: 69468650
 Conc: 50.00 ng/ml



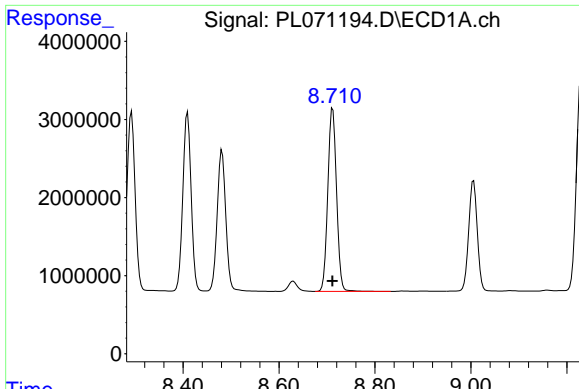
#18 Endrin aldehyde

R.T.: 8.481 min
 Delta R.T.: 0.000 min
 Response: 22407640
 Conc: 50.00 ng/ml



#18 Endrin aldehyde

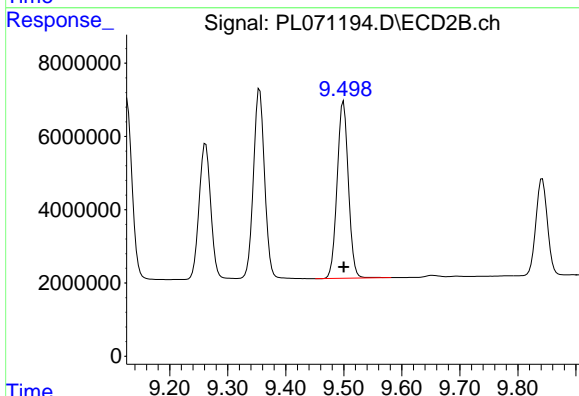
R.T.: 9.262 min
 Delta R.T.: 0.000 min
 Response: 51468870
 Conc: 50.00 ng/ml



#19 Endosulfan Sulfate

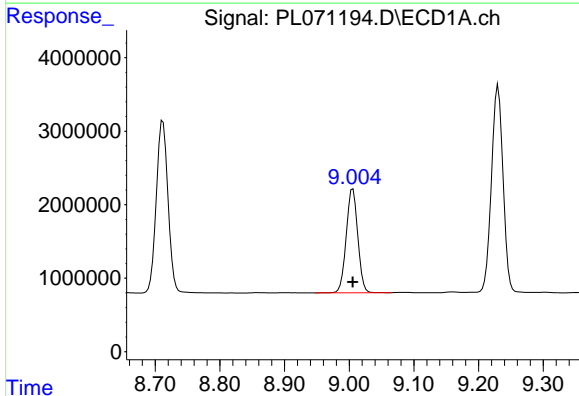
R.T.: 8.712 min
 Delta R.T.: 0.000 min
 Response: 29696933
 Conc: 50.00 ng/ml

Instrument :
 ECD_L
 ClientSampleId :



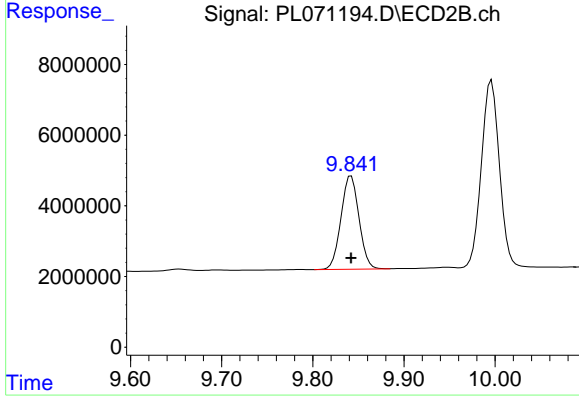
#19 Endosulfan Sulfate

R.T.: 9.500 min
 Delta R.T.: 0.000 min
 Response: 65391628
 Conc: 50.00 ng/ml



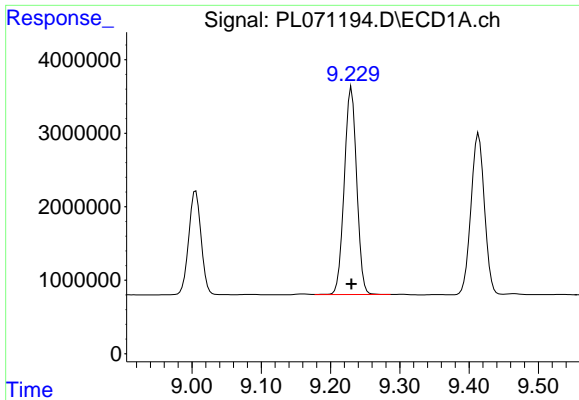
#20 Methoxychlor

R.T.: 9.006 min
 Delta R.T.: 0.000 min
 Response: 17588914
 Conc: 50.00 ng/ml



#20 Methoxychlor

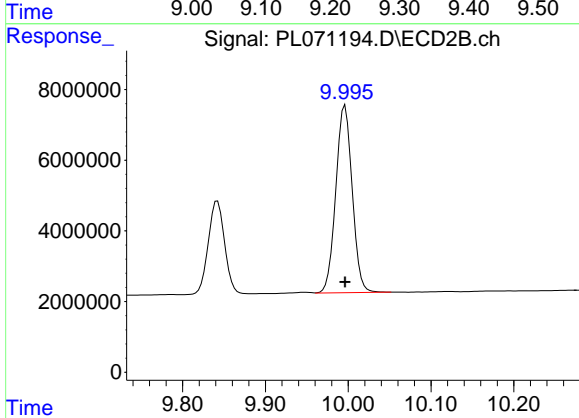
R.T.: 9.842 min
 Delta R.T.: 0.000 min
 Response: 36169214
 Conc: 50.00 ng/ml



#21 Endrin ketone

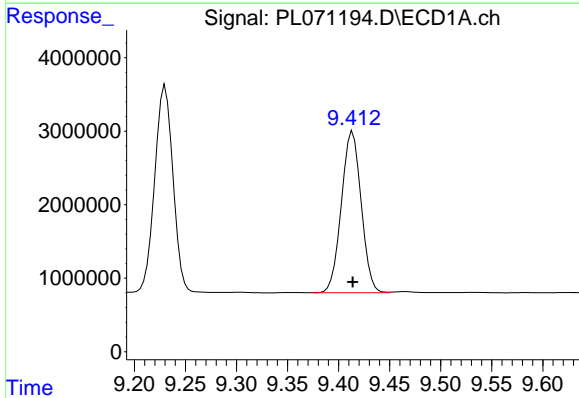
R.T.: 9.230 min
 Delta R.T.: 0.000 min
 Response: 35095736
 Conc: 50.00 ng/ml

Instrument :
 ECD_L
 ClientSampleId :



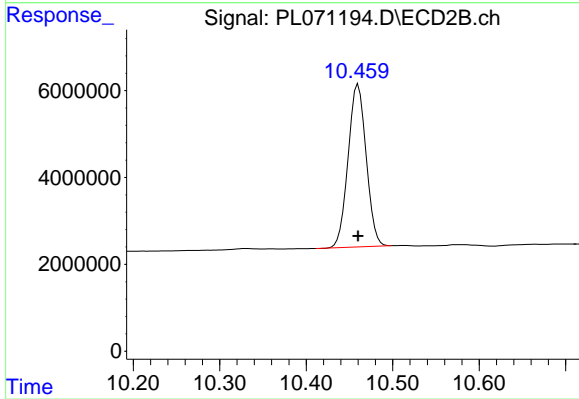
#21 Endrin ketone

R.T.: 9.996 min
 Delta R.T.: 0.000 min
 Response: 72932755
 Conc: 50.00 ng/ml



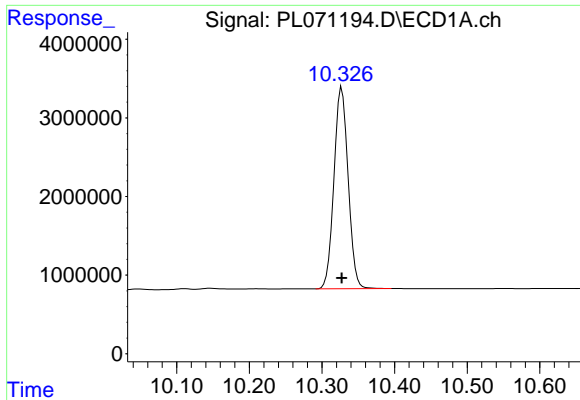
#22 Mirex

R.T.: 9.414 min
 Delta R.T.: 0.000 min
 Response: 29642862
 Conc: 50.00 ng/ml



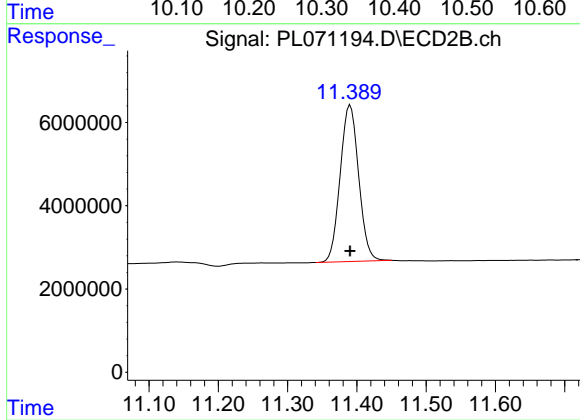
#22 Mirex

R.T.: 10.460 min
 Delta R.T.: 0.000 min
 Response: 54278750
 Conc: 50.00 ng/ml



#28 Decachlorobiphenyl
R.T.: 10.327 min
Delta R.T.: 0.000 min
Response: 34743288
Conc: 50.00 ng/ml

Instrument :
ECD_L
ClientSampleId :



#28 Decachlorobiphenyl
R.T.: 11.390 min
Delta R.T.: 0.000 min
Response: 69771389
Conc: 50.00 ng/ml