

Data Path : Z:\pestpcbsrv\HPCHEM1\ECD\_L\Data\PL113022\  
 Data File : PL079502.D  
 Signal(s) : Signal #1: ECD1A.ch Signal #2: ECD2B.ch  
 Acq On : 30 Nov 2022 10:03  
 Operator : AR\AJ  
 Sample : PSTDCCC050  
 Misc :  
 ALS Vial : 4 Sample Multiplier: 1

Instrument :  
 ECD\_L  
 ClientSampleId :  
 PSTDCCC050

Integration File signal 1: autoint1.e  
 Integration File signal 2: autoint2.e  
 Quant Time: Nov 30 20:15:36 2022  
 Quant Method : Z:\pestpcbsrv\HPCHEM1\ECD\_L\methods\PL112322.M  
 Quant Title : GC Extractables  
 QLast Update : Thu Nov 24 00:09:49 2022  
 Response via : Initial Calibration  
 Integrator: ChemStation

Volume Inj. : 1 µl  
 Signal #1 Phase : ZB-MR2 Signal #2 Phase: ZB-MR1  
 Signal #1 Info : 30M x 0.32mm x0.2 Signal #2 Info : 30M x 0.32mm x0.5µm

	Compound	RT#1	RT#2	Resp#1	Resp#2	ng/ml	ng/ml
-----							
System Monitoring Compounds							
1)	SA Tetrachlo...	3.324	2.563	117.7E6	135.3E6	52.092	49.719
28)	SA Decachlor...	8.774	7.632	97661148	108.9E6	50.286	46.344
Target Compounds							
2)	A alpha-BHC	3.784	3.049	187.3E6	216.2E6	54.465	50.141
3)	MA gamma-BHC...	4.118	3.370	174.1E6	196.0E6	53.718	50.328
4)	MA Heptachlor	4.688	3.697	173.1E6	190.8E6	52.525	49.598
5)	MB Aldrin	5.026	3.968	166.4E6	185.9E6	53.589	50.066
6)	B beta-BHC	4.333	3.671	72394031	74487320	51.272	49.161
7)	B delta-BHC	4.574	3.891	156.4E6	193.4E6	56.379	50.269
8)	B Heptachlo...	5.460	4.466	152.6E6	167.3E6	53.435	49.576
9)	A Endosulfan I	5.844	4.828	140.8E6	159.2E6	52.964	49.739
10)	B gamma-Chl...	5.715	4.713	154.2E6	170.1E6	53.901	50.276
11)	B alpha-Chl...	5.791	4.775	151.7E6	165.7E6	52.655	49.482
12)	B 4,4'-DDE	5.975	4.971	132.8E6	156.2E6	53.174	50.928
13)	MA Dieldrin	6.122	5.090	143.4E6	169.3E6	52.270	50.209
14)	MA Endrin	6.352	5.361	119.5E6	140.5E6	49.385	46.461
15)	B Endosulfa...	6.582	5.658	115.6E6	137.0E6	51.209	48.957
16)	A 4,4'-DDD	6.500	5.522	112.7E6	134.5E6	56.825	53.755
17)	MA 4,4'-DDT	6.810	5.768	104.7E6	116.8E6	46.168	44.689
18)	B Endrin al...	6.713	5.836	94594637	105.4E6	52.229	49.507
19)	B Endosulfa...	6.947	6.059	120.0E6	137.6E6	51.734	48.776
20)	A Methoxychlor	7.294	6.346	53552012	59593876	44.390	43.846
21)	B Endrin ke...	7.432	6.555	130.9E6	157.8E6	53.064	51.242
22)	Mirex	7.889	6.727	94945048	111.9E6	50.126	47.301

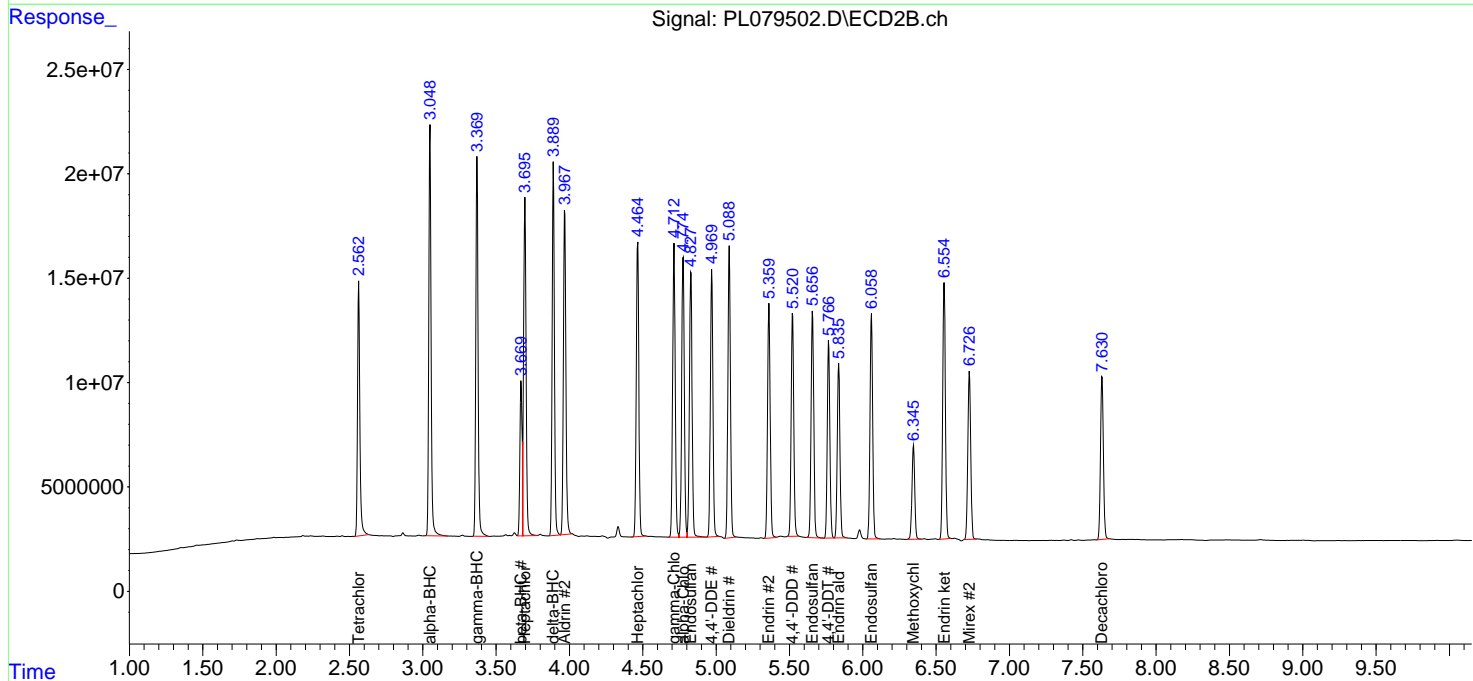
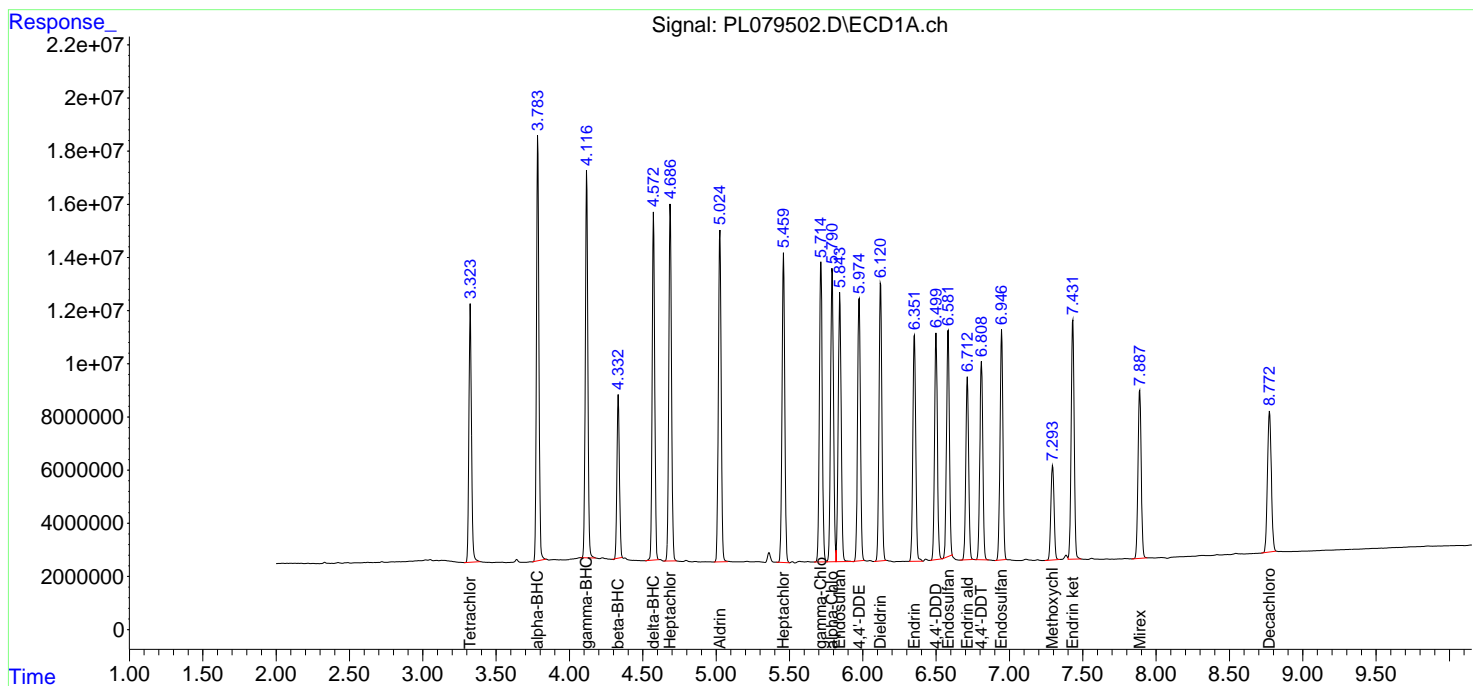
(f)=RT Delta > 1/2 Window (#)=Amounts differ by > 25% (m)=manual int.

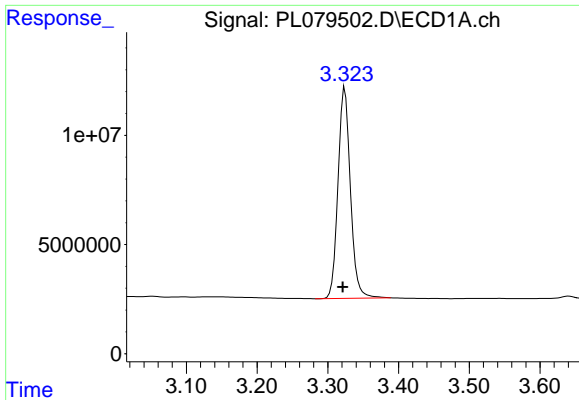
Data Path : Z:\pestpcbsrv\HPCHEM1\ECD\_L\Data\PL113022\  
 Data File : PL079502.D  
 Signal(s) : Signal #1: ECD1A.ch Signal #2: ECD2B.ch  
 Acq On : 30 Nov 2022 10:03  
 Operator : AR\AJ  
 Sample : PSTDCCC050  
 Misc :  
 ALS Vial : 4 Sample Multiplier: 1

Instrument :  
 ECD\_L  
 ClientSampleId :  
 PSTDCCC050

Integration File signal 1: autoint1.e  
 Integration File signal 2: autoint2.e  
 Quant Time: Nov 30 20:15:36 2022  
 Quant Method : Z:\pestpcbsrv\HPCHEM1\ECD\_L\methods\PL112322.M  
 Quant Title : GC Extractables  
 QLast Update : Thu Nov 24 00:09:49 2022  
 Response via : Initial Calibration  
 Integrator: ChemStation

Volume Inj. : 1 µl  
 Signal #1 Phase : ZB-MR2 Signal #2 Phase: ZB-MR1  
 Signal #1 Info : 30M x 0.32mm x0.2 Signal #2 Info : 30M x 0.32mm x0.5µm

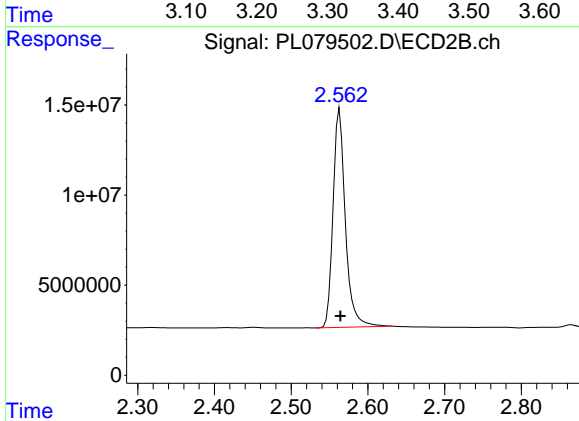




#1 Tetrachloro-m-xylene

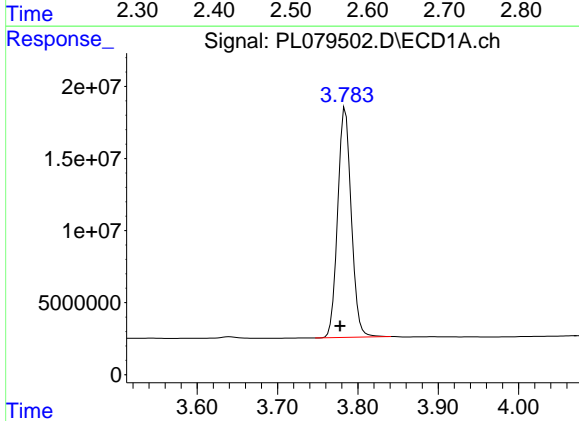
R.T.: 3.324 min  
 Delta R.T.: 0.003 min  
 Response: 117678486  
 Conc: 52.09 ng/ml

Instrument :  
 ECD\_L  
 ClientSampleId :  
 PSTDCCC050



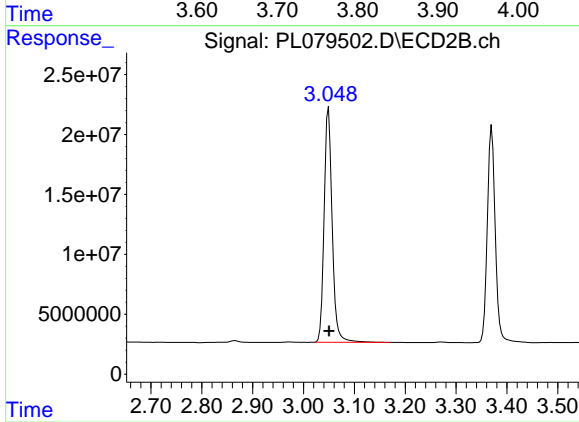
#1 Tetrachloro-m-xylene

R.T.: 2.563 min  
 Delta R.T.: -0.001 min  
 Response: 135335667  
 Conc: 49.72 ng/ml



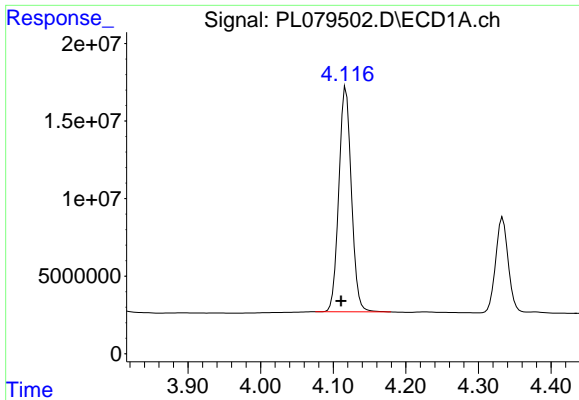
#2 alpha-BHC

R.T.: 3.784 min  
 Delta R.T.: 0.006 min  
 Response: 187291531  
 Conc: 54.46 ng/ml



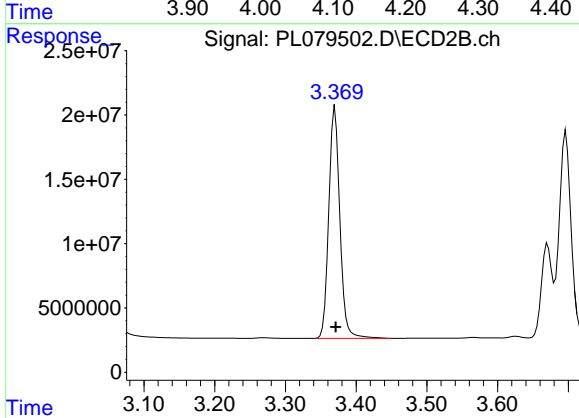
#2 alpha-BHC

R.T.: 3.049 min  
 Delta R.T.: -0.001 min  
 Response: 216209570  
 Conc: 50.14 ng/ml

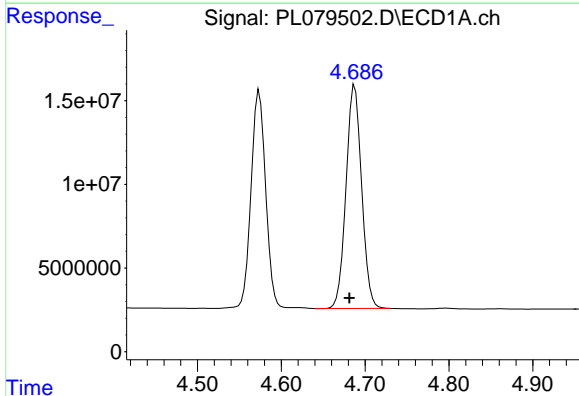


#3 gamma-BHC (Lindane)  
 R.T.: 4.118 min  
 Delta R.T.: 0.007 min  
 Response: 174088226  
 Conc: 53.72 ng/ml

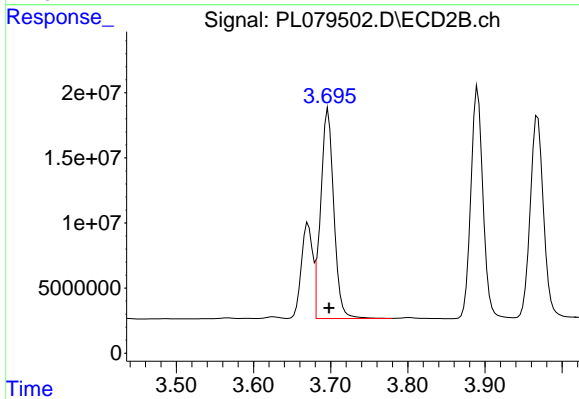
Instrument :  
 ECD\_L  
 ClientSampleId :  
 PSTDCCC050



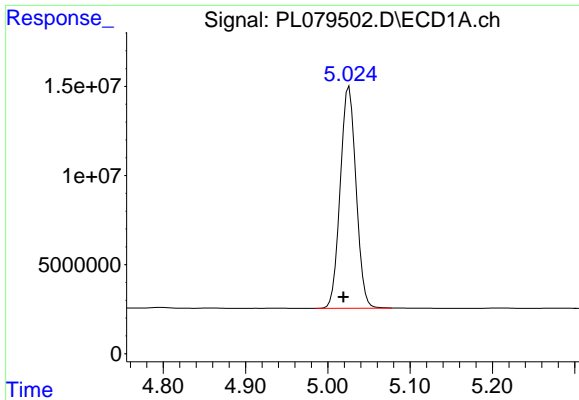
#3 gamma-BHC (Lindane)  
 R.T.: 3.370 min  
 Delta R.T.: -0.001 min  
 Response: 195959335  
 Conc: 50.33 ng/ml



#4 Heptachlor  
 R.T.: 4.688 min  
 Delta R.T.: 0.006 min  
 Response: 173083178  
 Conc: 52.53 ng/ml



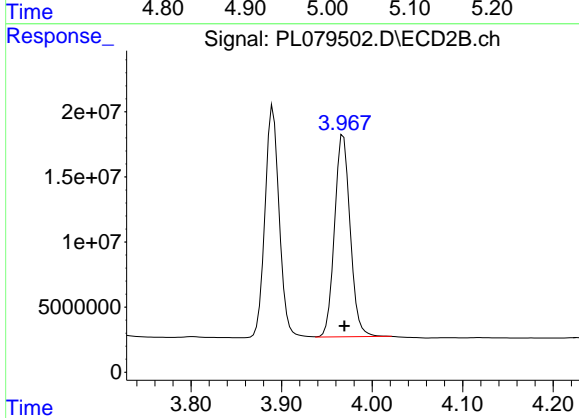
#4 Heptachlor  
 R.T.: 3.697 min  
 Delta R.T.: -0.001 min  
 Response: 190839254  
 Conc: 49.60 ng/ml



#5 Aldrin

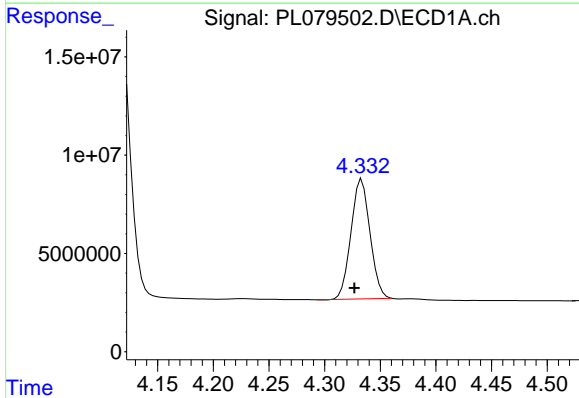
R.T.: 5.026 min  
 Delta R.T.: 0.007 min  
 Response: 166413039  
 Conc: 53.59 ng/ml

Instrument :  
 ECD\_L  
 ClientSampleId :  
 PSTDCCC050



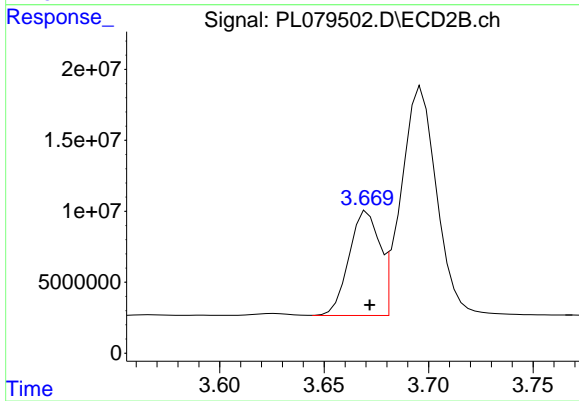
#5 Aldrin

R.T.: 3.968 min  
 Delta R.T.: 0.000 min  
 Response: 185889467  
 Conc: 50.07 ng/ml



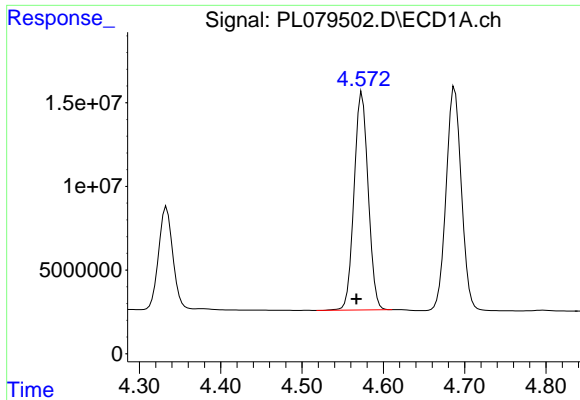
#6 beta-BHC

R.T.: 4.333 min  
 Delta R.T.: 0.007 min  
 Response: 72394031  
 Conc: 51.27 ng/ml



#6 beta-BHC

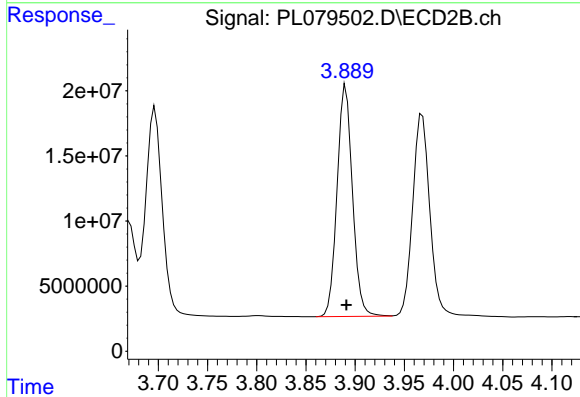
R.T.: 3.671 min  
 Delta R.T.: -0.001 min  
 Response: 74487320  
 Conc: 49.16 ng/ml



#7 delta-BHC

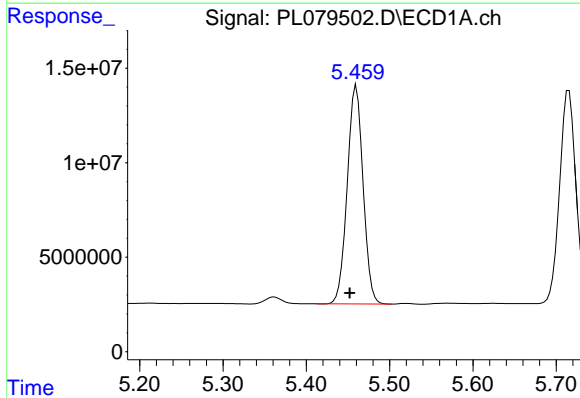
R.T.: 4.574 min  
 Delta R.T.: 0.007 min  
 Response: 156415012  
 Conc: 56.38 ng/ml

Instrument :  
 ECD\_L  
 ClientSampleId :  
 PSTDCCC050



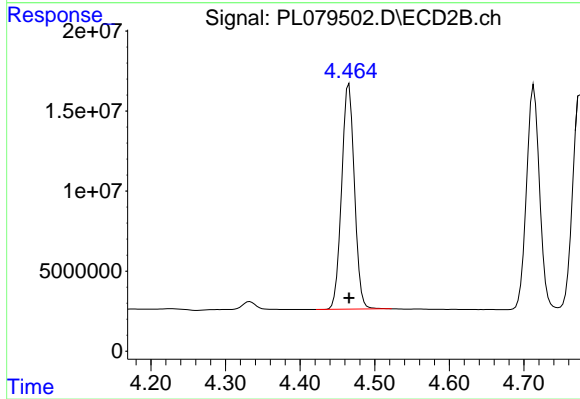
#7 delta-BHC

R.T.: 3.891 min  
 Delta R.T.: 0.000 min  
 Response: 193396105  
 Conc: 50.27 ng/ml



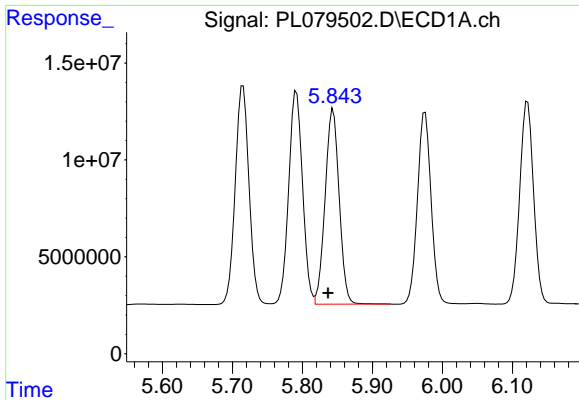
#8 Heptachlor epoxide

R.T.: 5.460 min  
 Delta R.T.: 0.008 min  
 Response: 152554180  
 Conc: 53.43 ng/ml



#8 Heptachlor epoxide

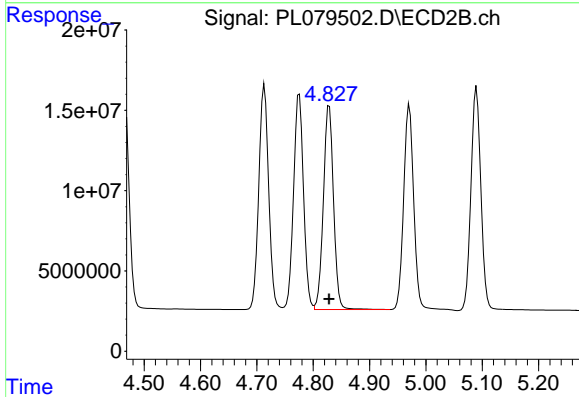
R.T.: 4.466 min  
 Delta R.T.: 0.000 min  
 Response: 167337170  
 Conc: 49.58 ng/ml



#9 Endosulfan I

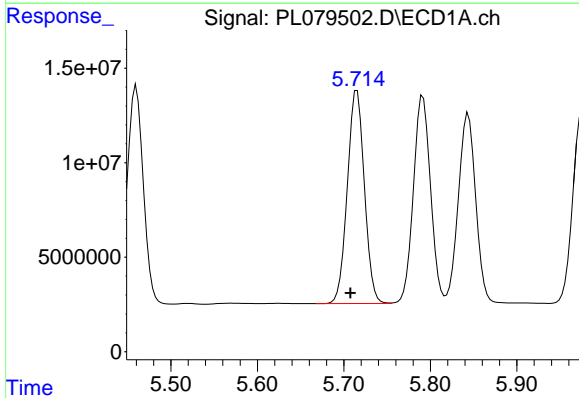
R.T.: 5.844 min  
 Delta R.T.: 0.007 min  
 Response: 140815523  
 Conc: 52.96 ng/ml

Instrument :  
 ECD\_L  
 ClientSampleId :  
 PSTDCCC050



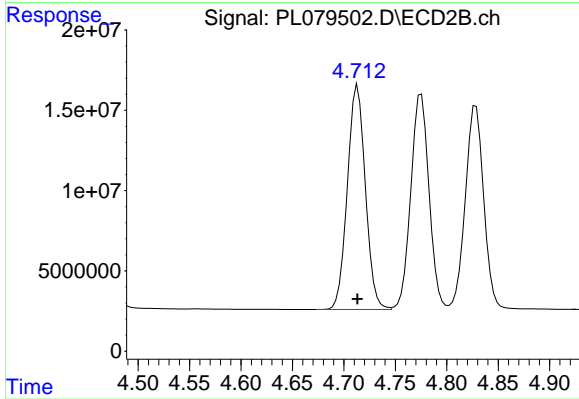
#9 Endosulfan I

R.T.: 4.828 min  
 Delta R.T.: 0.000 min  
 Response: 159154658  
 Conc: 49.74 ng/ml



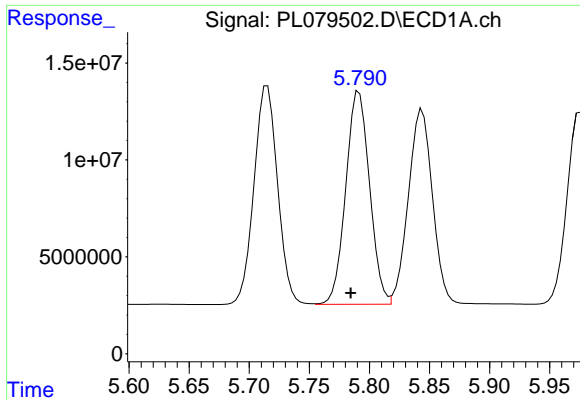
#10 gamma-Chlordane

R.T.: 5.715 min  
 Delta R.T.: 0.008 min  
 Response: 154222318  
 Conc: 53.90 ng/ml



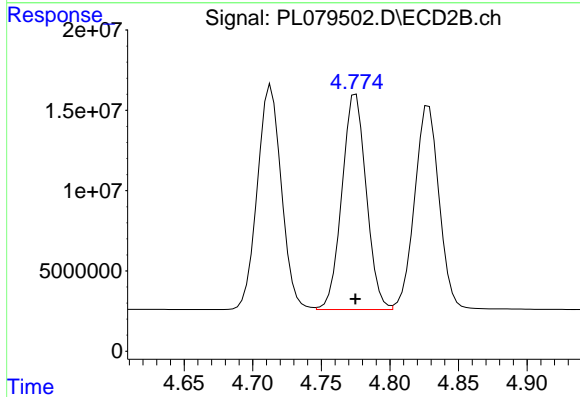
#10 gamma-Chlordane

R.T.: 4.713 min  
 Delta R.T.: 0.000 min  
 Response: 170145946  
 Conc: 50.28 ng/ml

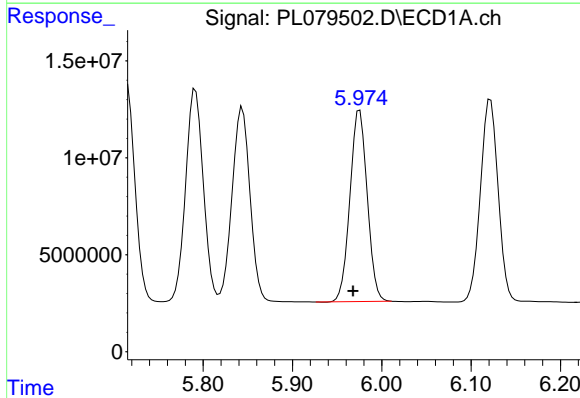


#11 alpha-Chlordane  
 R.T.: 5.791 min  
 Delta R.T.: 0.007 min  
 Response: 151731545  
 Conc: 52.66 ng/ml

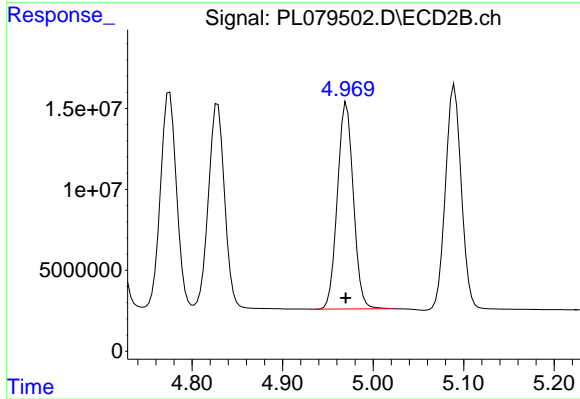
Instrument :  
 ECD\_L  
 ClientSampleId :  
 PSTDCCC050



#11 alpha-Chlordane  
 R.T.: 4.775 min  
 Delta R.T.: 0.000 min  
 Response: 165724471  
 Conc: 49.48 ng/ml

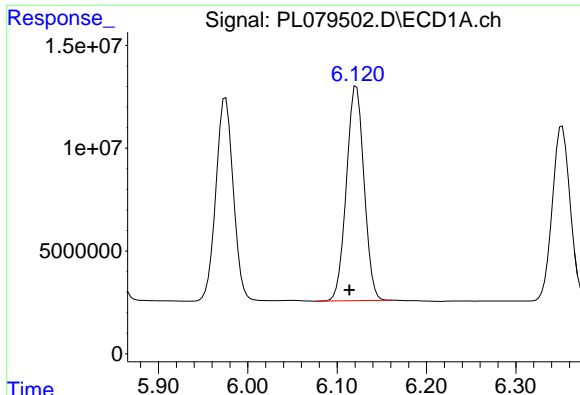


#12 4,4'-DDE  
 R.T.: 5.975 min  
 Delta R.T.: 0.007 min  
 Response: 132849268  
 Conc: 53.17 ng/ml



#12 4,4'-DDE  
 R.T.: 4.971 min  
 Delta R.T.: 0.000 min  
 Response: 156150406  
 Conc: 50.93 ng/ml

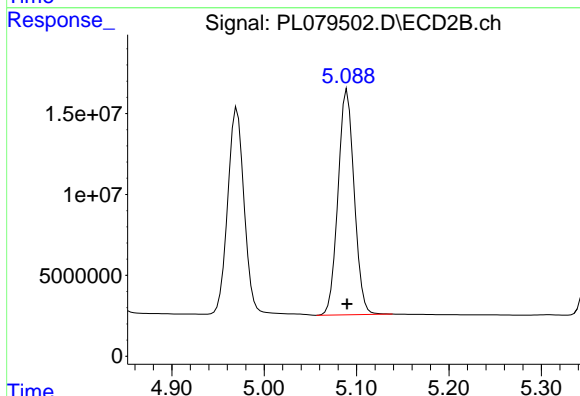




#13 Dieldrin

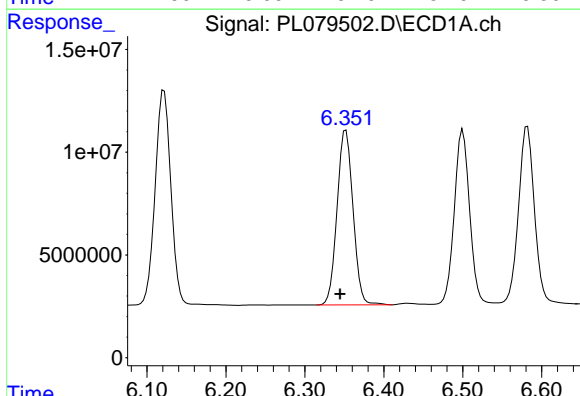
R.T.: 6.122 min  
 Delta R.T.: 0.008 min  
 Response: 143369980  
 Conc: 52.27 ng/ml

Instrument :  
 ECD\_L  
 ClientSampleId :  
 PSTDCCC050



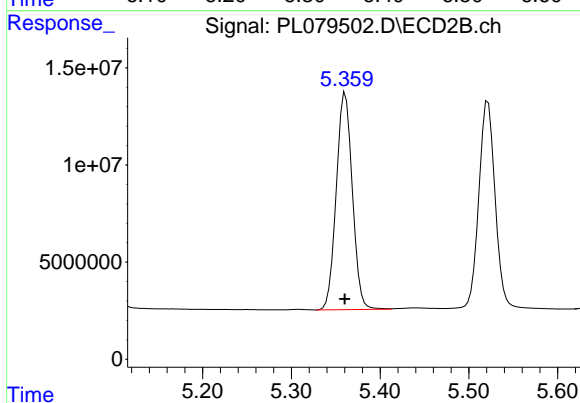
#13 Dieldrin

R.T.: 5.090 min  
 Delta R.T.: 0.000 min  
 Response: 169261272  
 Conc: 50.21 ng/ml



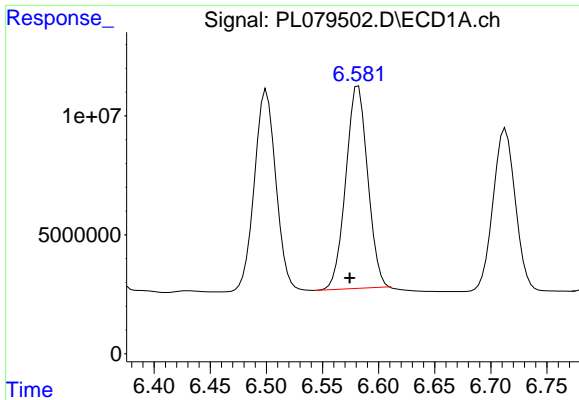
#14 Endrin

R.T.: 6.352 min  
 Delta R.T.: 0.008 min  
 Response: 119472007  
 Conc: 49.39 ng/ml



#14 Endrin

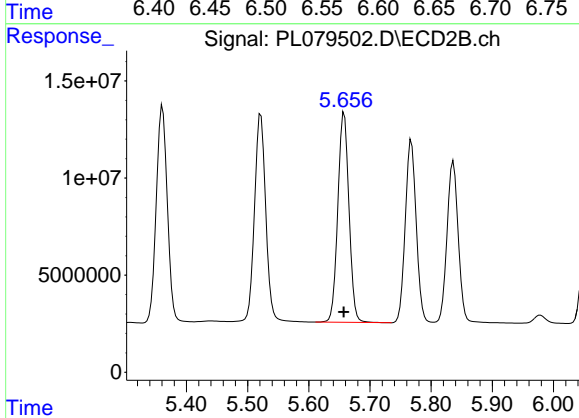
R.T.: 5.361 min  
 Delta R.T.: 0.000 min  
 Response: 140531465  
 Conc: 46.46 ng/ml



#15 Endosulfan II

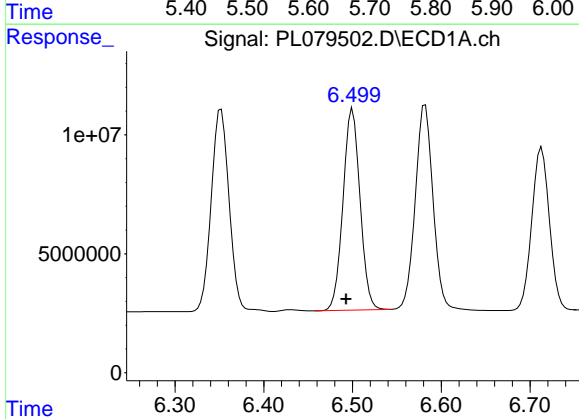
R.T.: 6.582 min  
 Delta R.T.: 0.008 min  
 Response: 115602610  
 Conc: 51.21 ng/ml

Instrument :  
 ECD\_L  
 ClientSampleId :  
 PSTDCCC050



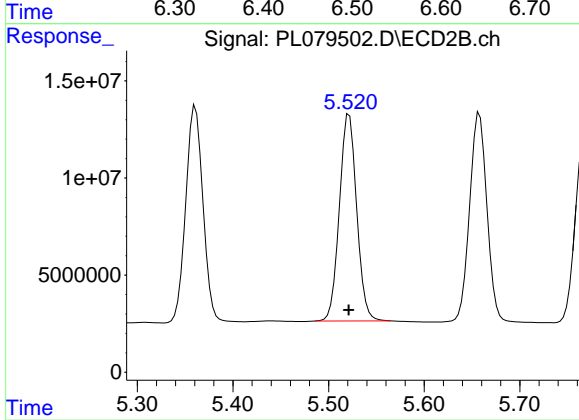
#15 Endosulfan II

R.T.: 5.658 min  
 Delta R.T.: 0.001 min  
 Response: 136993855  
 Conc: 48.96 ng/ml



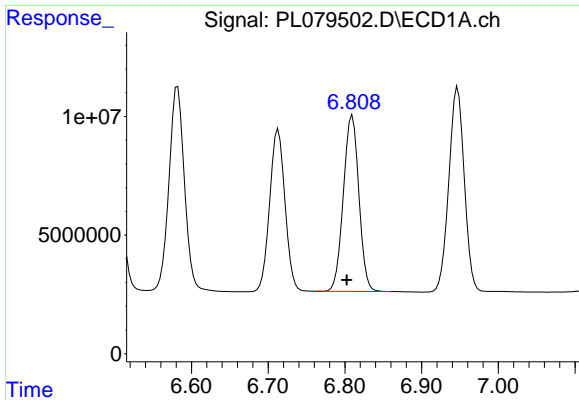
#16 4,4'-DDD

R.T.: 6.500 min  
 Delta R.T.: 0.007 min  
 Response: 112742193  
 Conc: 56.82 ng/ml



#16 4,4'-DDD

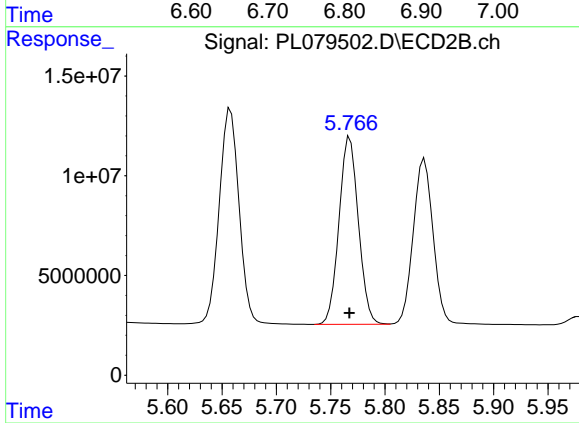
R.T.: 5.522 min  
 Delta R.T.: 0.000 min  
 Response: 134467556  
 Conc: 53.75 ng/ml



#17 4,4'-DDT

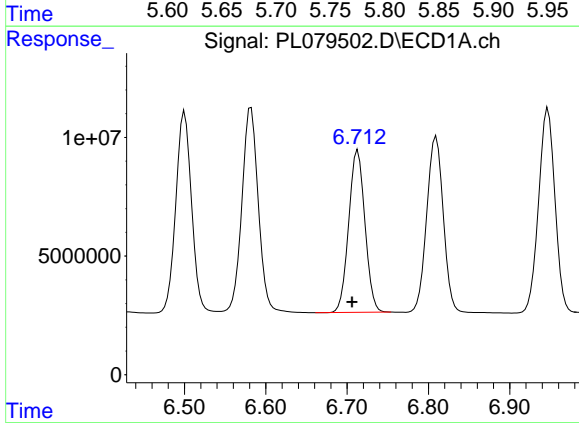
R.T.: 6.810 min  
 Delta R.T.: 0.007 min  
 Response: 104725197  
 Conc: 46.17 ng/ml

Instrument :  
 ECD\_L  
 ClientSampleId :  
 PSTDCCC050



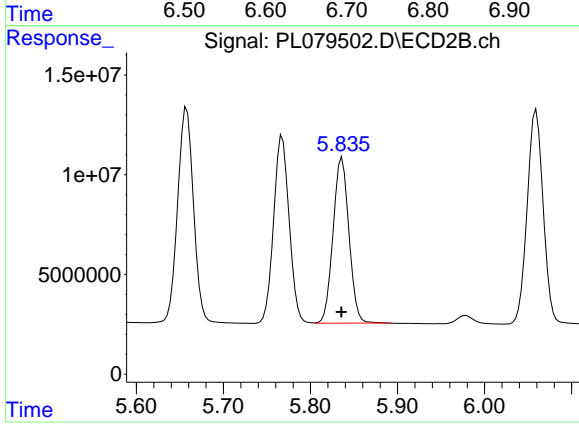
#17 4,4'-DDT

R.T.: 5.768 min  
 Delta R.T.: 0.000 min  
 Response: 116799873  
 Conc: 44.69 ng/ml



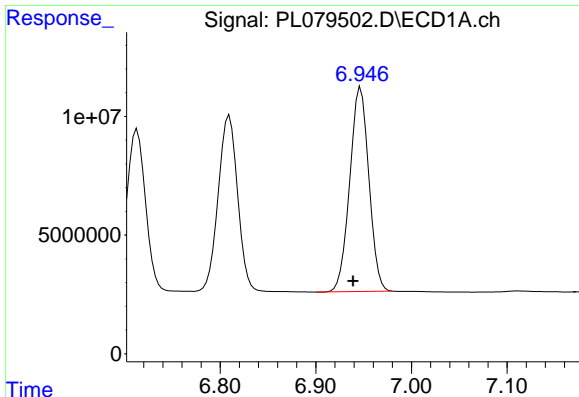
#18 Endrin aldehyde

R.T.: 6.713 min  
 Delta R.T.: 0.007 min  
 Response: 94594637  
 Conc: 52.23 ng/ml



#18 Endrin aldehyde

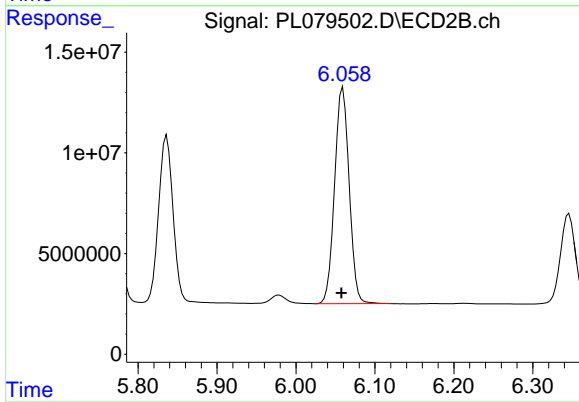
R.T.: 5.836 min  
 Delta R.T.: 0.000 min  
 Response: 105372832  
 Conc: 49.51 ng/ml



#19 Endosulfan Sulfate

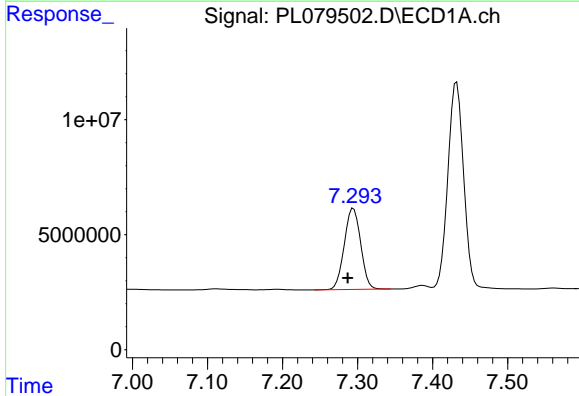
R.T.: 6.947 min  
 Delta R.T.: 0.008 min  
 Response: 119966650  
 Conc: 51.73 ng/ml

Instrument :  
 ECD\_L  
 ClientSampleId :  
 PSTDCCC050



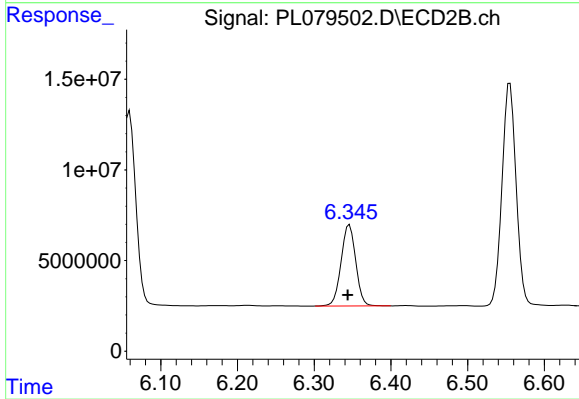
#19 Endosulfan Sulfate

R.T.: 6.059 min  
 Delta R.T.: 0.002 min  
 Response: 137630630  
 Conc: 48.78 ng/ml



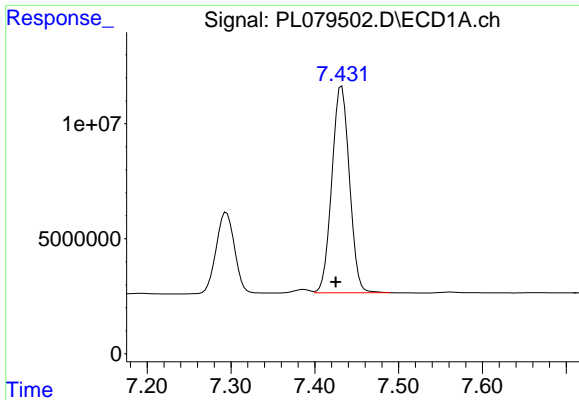
#20 Methoxychlor

R.T.: 7.294 min  
 Delta R.T.: 0.008 min  
 Response: 53552012  
 Conc: 44.39 ng/ml



#20 Methoxychlor

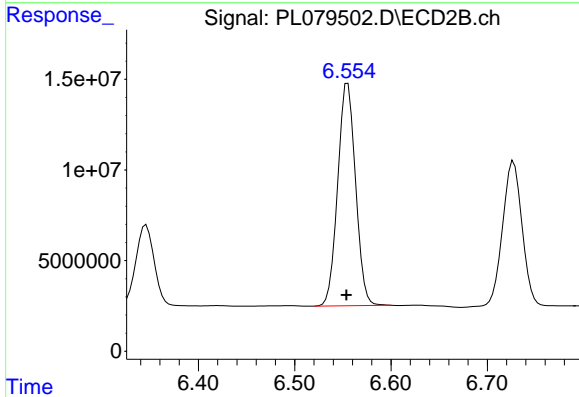
R.T.: 6.346 min  
 Delta R.T.: 0.002 min  
 Response: 59593876  
 Conc: 43.85 ng/ml



#21 Endrin ketone

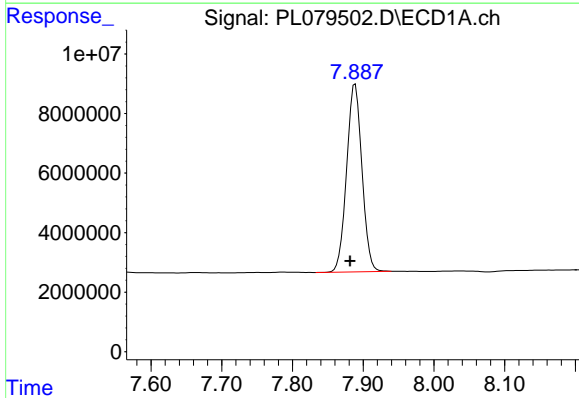
R.T.: 7.432 min  
 Delta R.T.: 0.007 min  
 Response: 130922437  
 Conc: 53.06 ng/ml

Instrument :  
 ECD\_L  
 ClientSampleId :  
 PSTDCCC050



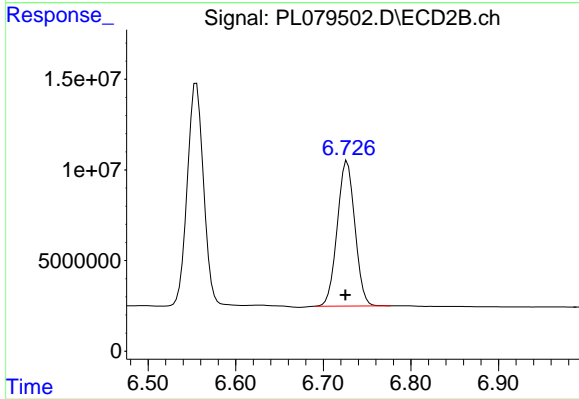
#21 Endrin ketone

R.T.: 6.555 min  
 Delta R.T.: 0.002 min  
 Response: 157821093  
 Conc: 51.24 ng/ml



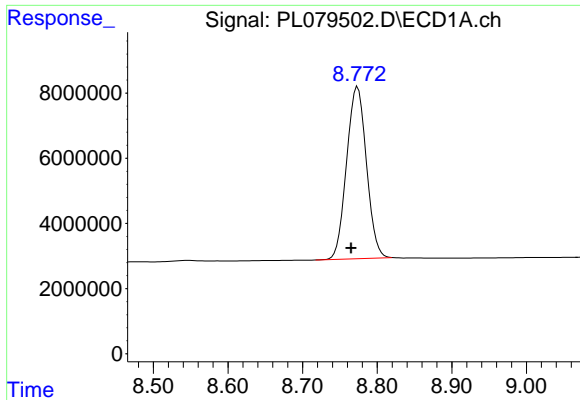
#22 Mirex

R.T.: 7.889 min  
 Delta R.T.: 0.007 min  
 Response: 94945048  
 Conc: 50.13 ng/ml



#22 Mirex

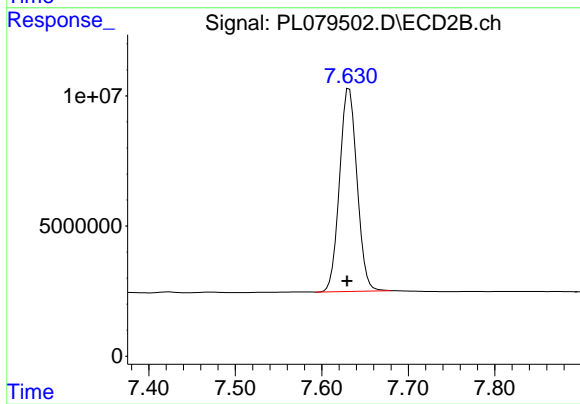
R.T.: 6.727 min  
 Delta R.T.: 0.002 min  
 Response: 111868117  
 Conc: 47.30 ng/ml



#28 Decachlorobiphenyl

R.T.: 8.774 min  
Delta R.T.: 0.009 min  
Response: 97661148  
Conc: 50.29 ng/ml

Instrument :  
ECD\_L  
ClientSampleId :  
PSTDCCC050



#28 Decachlorobiphenyl

R.T.: 7.632 min  
Delta R.T.: 0.003 min  
Response: 108875437  
Conc: 46.34 ng/ml