

Data Path : Z:\pestpcbsrv\HPCHEM1\ECD_L\Data\PL113023\
 Data File : PL086892.D
 Signal(s) : Signal #1: ECD1A.ch Signal #2: ECD2B.ch
 Acq On : 29 Nov 2023 14:44
 Operator : AR\AJ
 Sample : PB157454BS
 Misc :
 ALS Vial : 13 Sample Multiplier: 1

Instrument :
 ECD_L
 ClientSampleId :

Integration File signal 1: autoint1.e
 Integration File signal 2: autoint2.e
 Quant Time: Nov 29 20:16:11 2023
 Quant Method : Z:\pestpcbsrv\HPCHEM1\ECD_L\methods\PL112923.M
 Quant Title : GC Extractables
 QLast Update : Wed Nov 29 06:35:04 2023
 Response via : Initial Calibration
 Integrator: ChemStation

Volume Inj. : 1 µl
 Signal #1 Phase : ZB-MR2 Signal #2 Phase: ZB-MR1
 Signal #1 Info : 30M x 0.32mm x0.2 Signal #2 Info : 30M x 0.32mm x0.5µm

	Compound	RT#1	RT#2	Resp#1	Resp#2	ng/ml	ng/ml

System Monitoring Compounds							
1)	SA Tetrachlo...	3.343	2.610	58204784	16666307	18.205	18.325
28)	SA Decachlor...	8.843	7.760	54010753	21200635	20.232	19.228
Target Compounds							
2)	A alpha-BHC	3.797	3.108	232.1E6	64238515	50.137	50.584
3)	MA gamma-BHC...	4.129	3.435	213.4E6	60930406	48.783	49.868
4)	MA Heptachlor	4.715	3.771	212.3E6	63530389	53.498	54.409
5)	MB Aldrin	5.055	4.047	207.8E6	60806679	49.234	49.819
6)	B beta-BHC	4.333	3.738	90957101	26919719	48.623	50.879
7)	B delta-BHC	4.575	3.962	200.1E6	58592777	47.134	50.174
8)	B Heptachlo...	5.486	4.551	184.1E6	57675842	51.970	50.665
9)	A Endosulfan I	5.870	4.919	176.1E6	58964128	48.871	45.996
10)	B gamma-Chl...	5.744	4.803	191.0E6	58853303	50.787	51.342
11)	B alpha-Chl...	5.823	4.867	190.3E6	61104664	50.543	45.950
12)	B 4,4'-DDE	6.007	5.067	158.8E6	49251599	52.527	53.647
13)	MA Dieldrin	6.147	5.185	175.3E6	55713001	50.506	52.022
14)	MA Endrin	6.376	5.459	142.0E6	47903895	55.083	56.838
15)	B Endosulfa...	6.599	5.757	139.3E6	46905190	48.804	50.515
16)	A 4,4'-DDD	6.527	5.623	122.5E6	40908460	52.305	52.968
17)	MA 4,4'-DDT	6.842	5.874	133.5E6	44254244	52.031	54.874
18)	B Endrin al...	6.730	5.939	99781274	36211415	46.775	51.833
19)	B Endosulfa...	6.966	6.164	145.1E6	48943100	50.794	51.583
20)	A Methoxychlor	7.328	6.458	68518948	26877989	51.889	52.219
21)	B Endrin ke...	7.448	6.665	149.9E6	57047081	50.155	49.976
22)	Mirex	7.920	6.841	121.4E6	49053243	47.472	47.264
23)	Chlordane-1	0.000	3.594	0	239758	N.D.	6.991 #
24)	Chlordane-2	5.055f	4.192f	207.8E6	38905	1472.843	0.947 #
25)	Chlordane-3	5.744	4.803	191.0E6	58853303	360.821	537.427 #
26)	Chlordane-4	5.823	4.867	190.3E6	61104664	285.389	449.606 #
27)	Chlordane-5	0.000	5.537	0	8006	N.D.	0.258 #

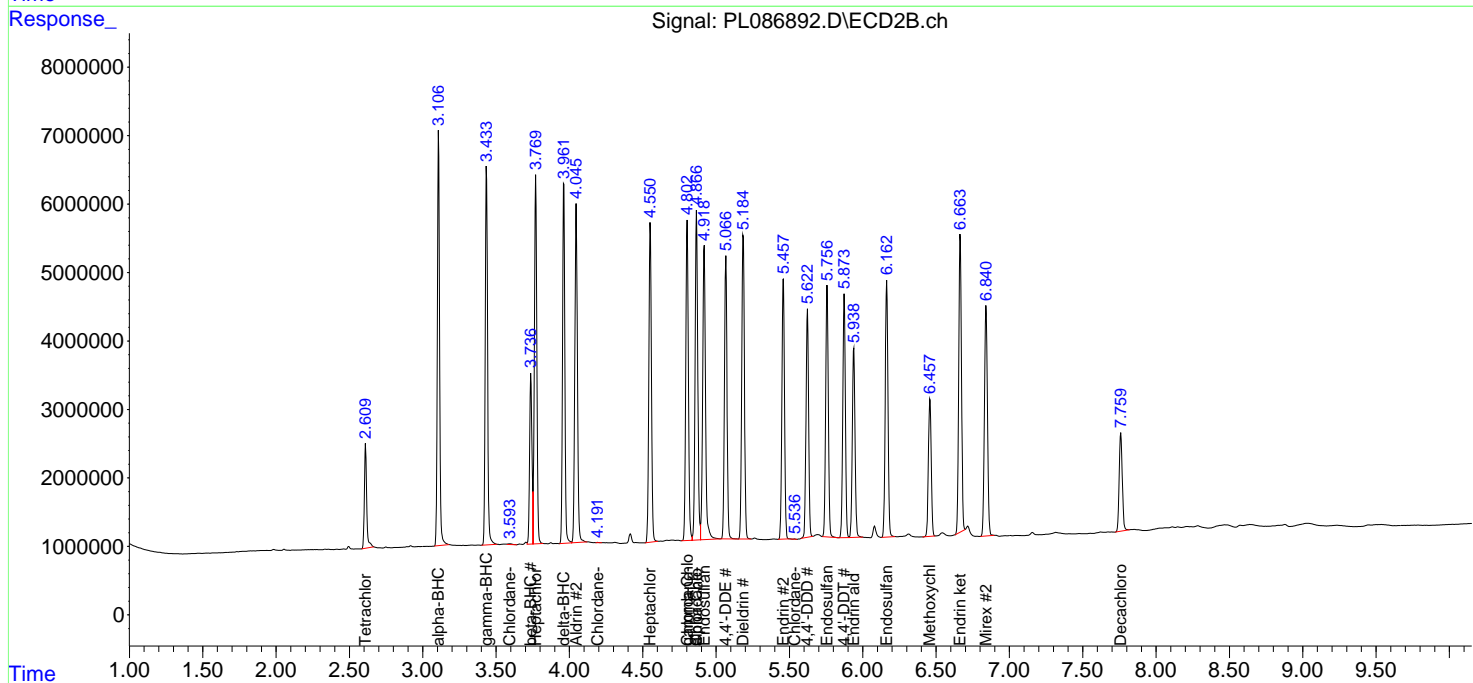
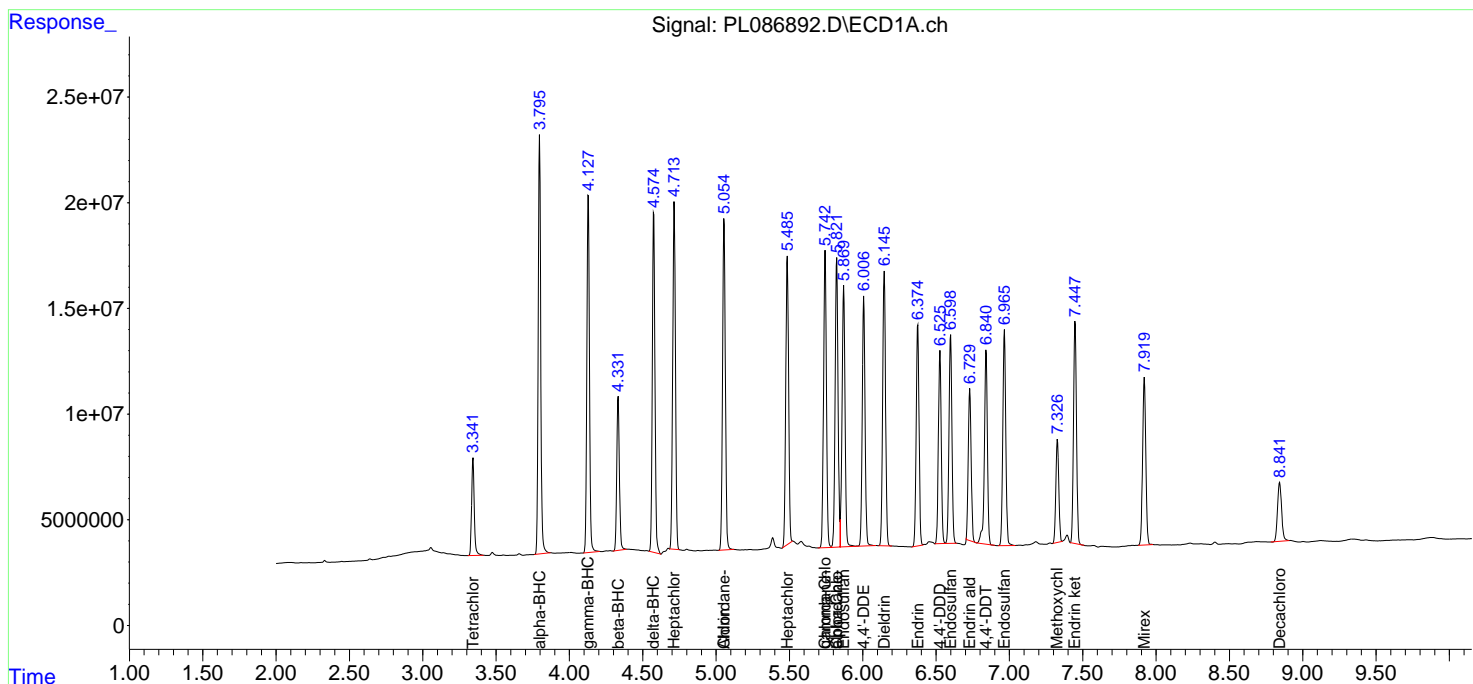
(f)=RT Delta > 1/2 Window (#)=Amounts differ by > 25% (m)=manual int.

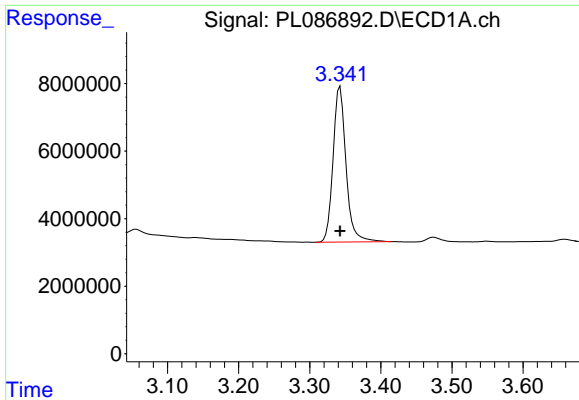
Data Path : Z:\pestpcbsrv\HPCHEM1\ECD_L\Data\PL113023\
 Data File : PL086892.D
 Signal(s) : Signal #1: ECD1A.ch Signal #2: ECD2B.ch
 Acq On : 29 Nov 2023 14:44
 Operator : AR\AJ
 Sample : PB157454BS
 Misc :
 ALS Vial : 13 Sample Multiplier: 1

Instrument :
 ECD_L
 ClientSampleId :

Integration File signal 1: autoint1.e
 Integration File signal 2: autoint2.e
 Quant Time: Nov 29 20:16:11 2023
 Quant Method : Z:\pestpcbsrv\HPCHEM1\ECD_L\methods\PL112923.M
 Quant Title : GC Extractables
 QLast Update : Wed Nov 29 06:35:04 2023
 Response via : Initial Calibration
 Integrator: ChemStation

Volume Inj. : 1 µl
 Signal #1 Phase : ZB-MR2 Signal #2 Phase: ZB-MR1
 Signal #1 Info : 30M x 0.32mm x0.2 Signal #2 Info : 30M x 0.32mm x0.5µm

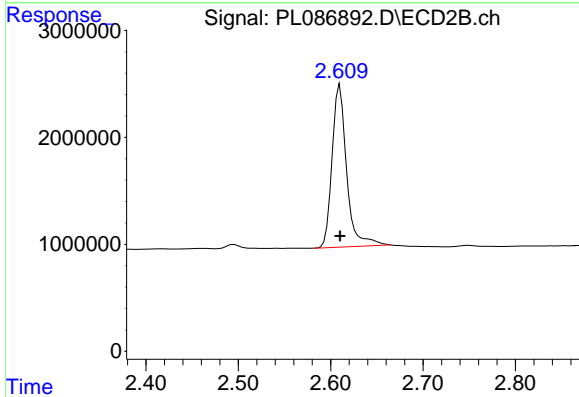




#1 Tetrachloro-m-xylene

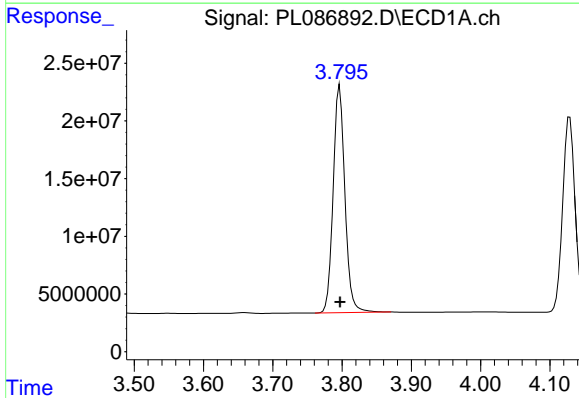
R.T.: 3.343 min
 Delta R.T.: 0.000 min
 Response: 58204784
 Conc: 18.21 ng/ml

Instrument :
 ECD_L
 ClientSampleId :



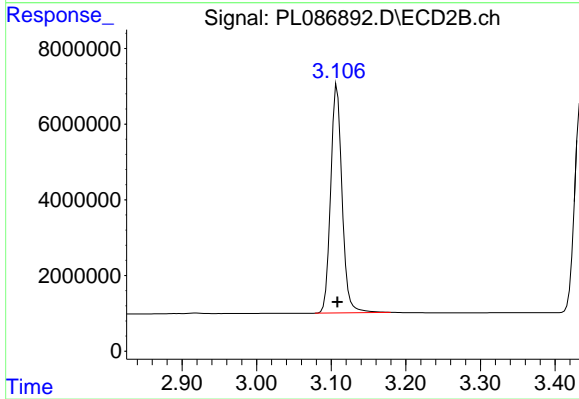
#1 Tetrachloro-m-xylene

R.T.: 2.610 min
 Delta R.T.: 0.000 min
 Response: 16666307
 Conc: 18.32 ng/ml



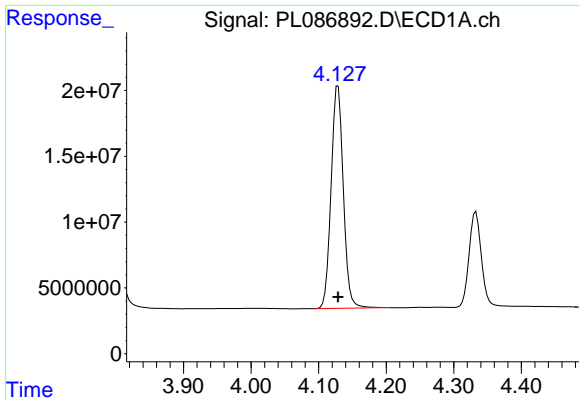
#2 alpha-BHC

R.T.: 3.797 min
 Delta R.T.: 0.000 min
 Response: 232138185
 Conc: 50.14 ng/ml



#2 alpha-BHC

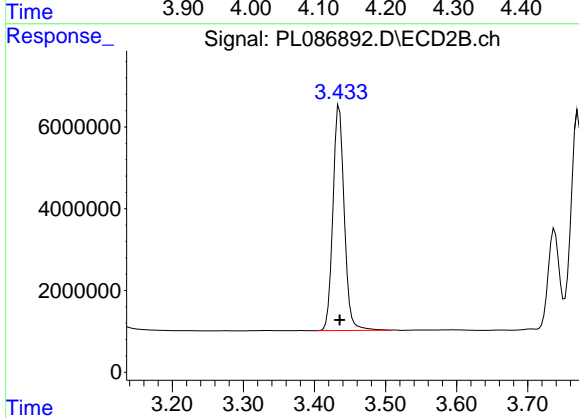
R.T.: 3.108 min
 Delta R.T.: 0.000 min
 Response: 64238515
 Conc: 50.58 ng/ml



#3 gamma-BHC (Lindane)

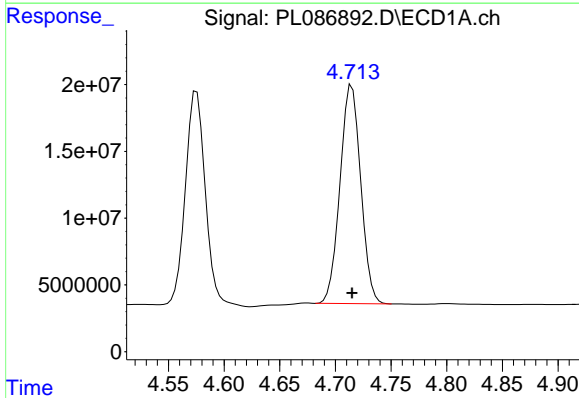
R.T.: 4.129 min
 Delta R.T.: 0.000 min
 Response: 213418046
 Conc: 48.78 ng/ml

Instrument :
 ECD_L
 ClientSampleId :



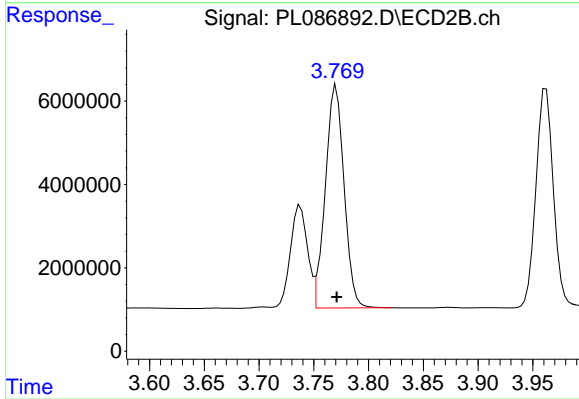
#3 gamma-BHC (Lindane)

R.T.: 3.435 min
 Delta R.T.: 0.000 min
 Response: 60930406
 Conc: 49.87 ng/ml



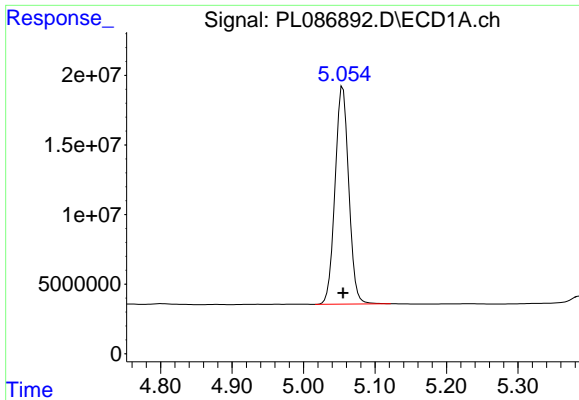
#4 Heptachlor

R.T.: 4.715 min
 Delta R.T.: 0.000 min
 Response: 212318062
 Conc: 53.50 ng/ml



#4 Heptachlor

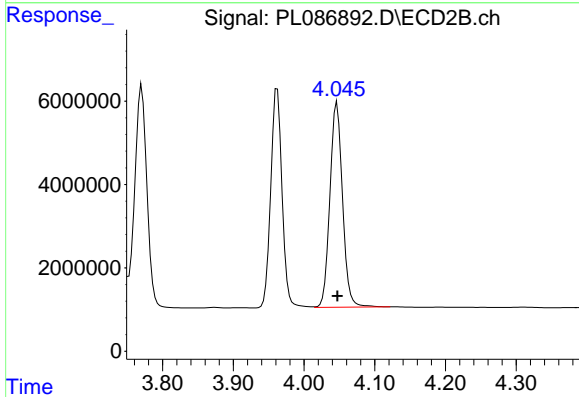
R.T.: 3.771 min
 Delta R.T.: 0.000 min
 Response: 63530389
 Conc: 54.41 ng/ml



#5 Aldrin

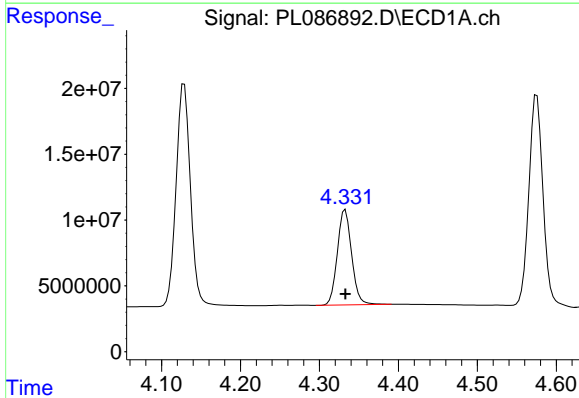
R.T.: 5.055 min
 Delta R.T.: 0.000 min
 Response: 207776489
 Conc: 49.23 ng/ml

Instrument :
 ECD_L
 ClientSampleId :



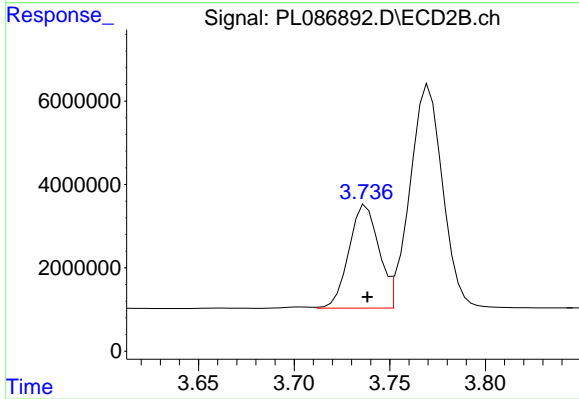
#5 Aldrin

R.T.: 4.047 min
 Delta R.T.: 0.000 min
 Response: 60806679
 Conc: 49.82 ng/ml



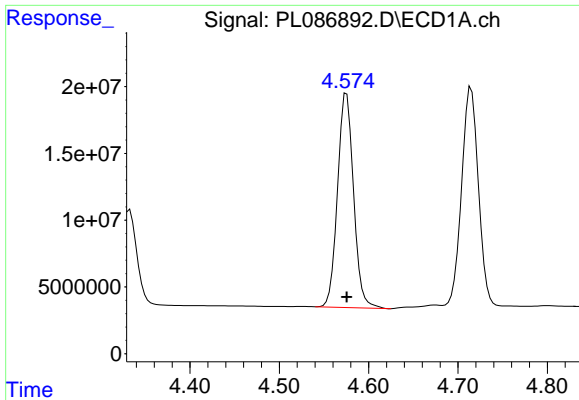
#6 beta-BHC

R.T.: 4.333 min
 Delta R.T.: 0.000 min
 Response: 90957101
 Conc: 48.62 ng/ml



#6 beta-BHC

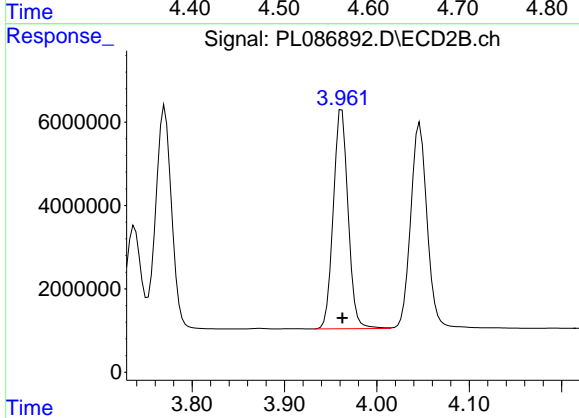
R.T.: 3.738 min
 Delta R.T.: 0.000 min
 Response: 26919719
 Conc: 50.88 ng/ml



#7 delta-BHC

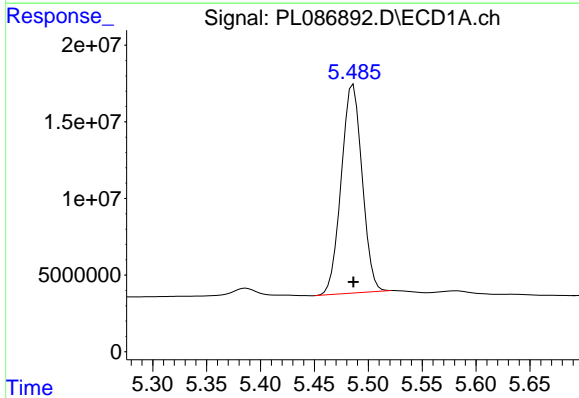
R.T.: 4.575 min
 Delta R.T.: 0.000 min
 Response: 200092610
 Conc: 47.13 ng/ml

Instrument :
 ECD_L
 ClientSampleId :



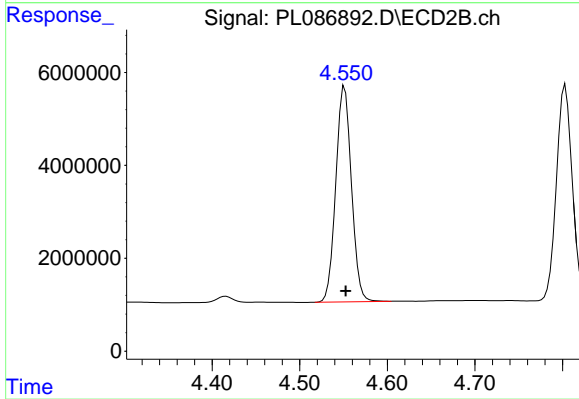
#7 delta-BHC

R.T.: 3.962 min
 Delta R.T.: 0.000 min
 Response: 58592777
 Conc: 50.17 ng/ml



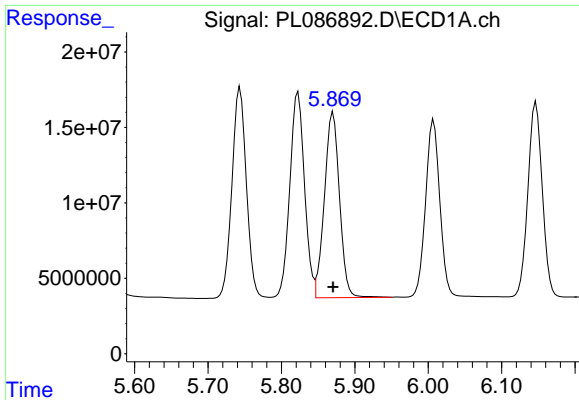
#8 Heptachlor epoxide

R.T.: 5.486 min
 Delta R.T.: 0.000 min
 Response: 184093492
 Conc: 51.97 ng/ml



#8 Heptachlor epoxide

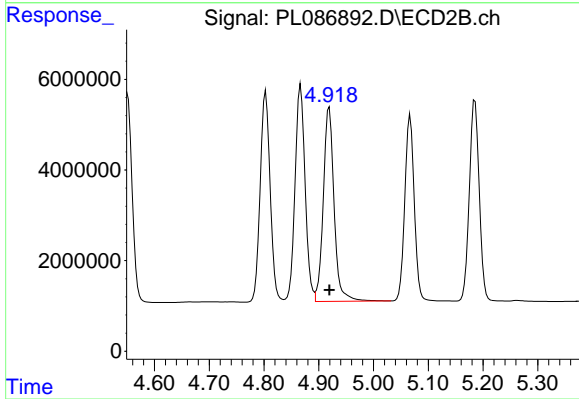
R.T.: 4.551 min
 Delta R.T.: -0.001 min
 Response: 57675842
 Conc: 50.66 ng/ml



#9 Endosulfan I

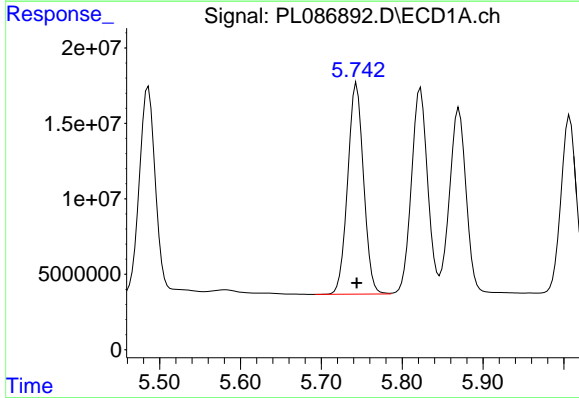
R.T.: 5.870 min
 Delta R.T.: 0.000 min
 Response: 176075361
 Conc: 48.87 ng/ml

Instrument :
 ECD_L
 ClientSampleId :



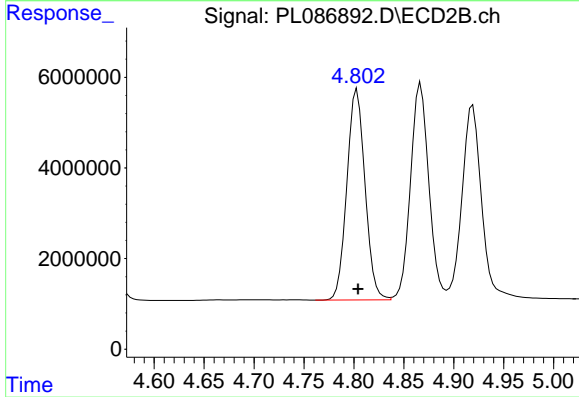
#9 Endosulfan I

R.T.: 4.919 min
 Delta R.T.: 0.000 min
 Response: 58964128
 Conc: 46.00 ng/ml



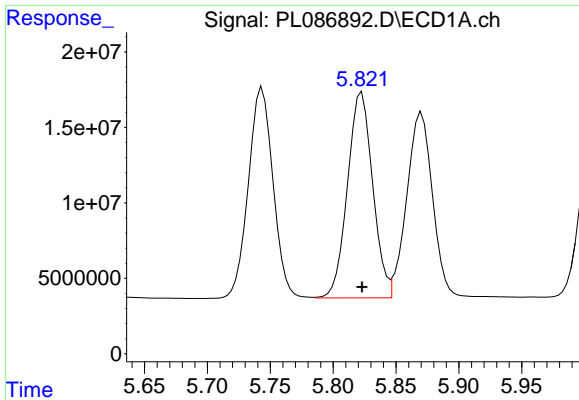
#10 gamma-Chlordane

R.T.: 5.744 min
 Delta R.T.: 0.000 min
 Response: 190953153
 Conc: 50.79 ng/ml



#10 gamma-Chlordane

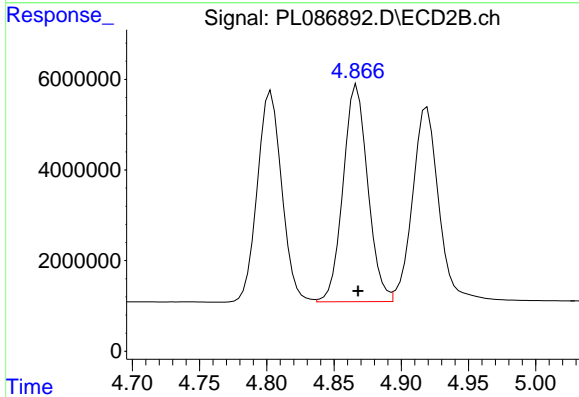
R.T.: 4.803 min
 Delta R.T.: -0.001 min
 Response: 58853303
 Conc: 51.34 ng/ml



#11 alpha-Chlordane

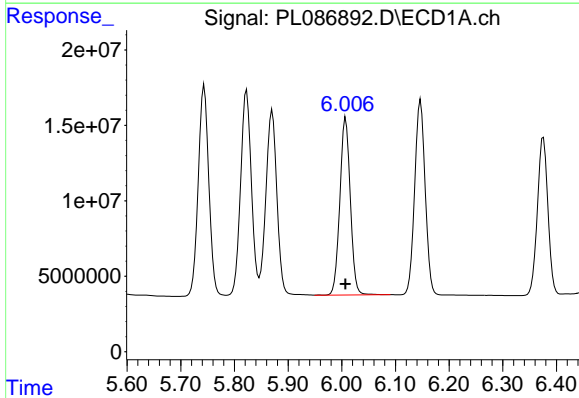
R.T.: 5.823 min
 Delta R.T.: 0.000 min
 Response: 190272470
 Conc: 50.54 ng/ml

Instrument :
 ECD_L
 ClientSampleId :



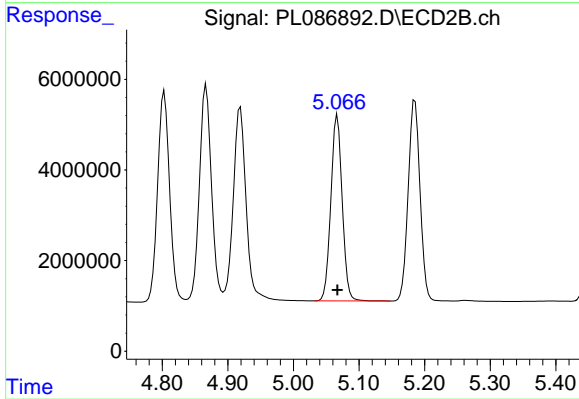
#11 alpha-Chlordane

R.T.: 4.867 min
 Delta R.T.: 0.000 min
 Response: 61104664
 Conc: 45.95 ng/ml



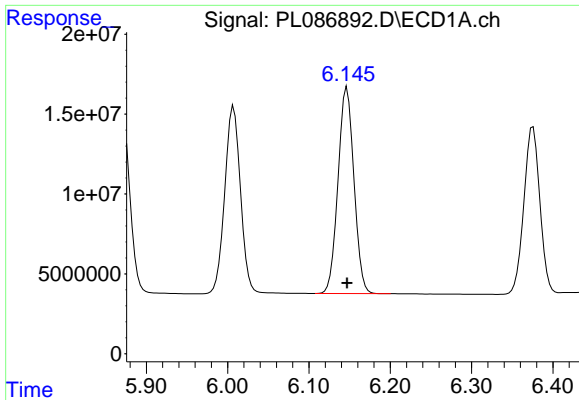
#12 4,4'-DDE

R.T.: 6.007 min
 Delta R.T.: 0.000 min
 Response: 158810737
 Conc: 52.53 ng/ml



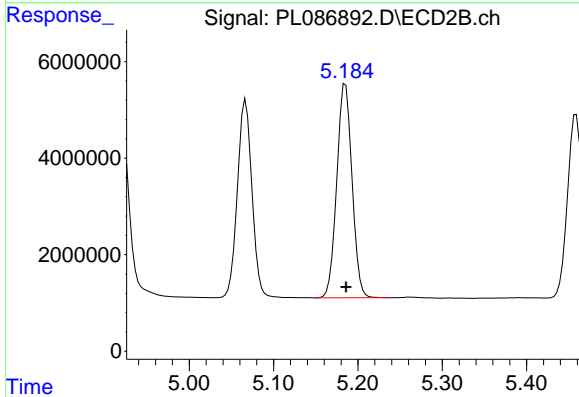
#12 4,4'-DDE

R.T.: 5.067 min
 Delta R.T.: 0.000 min
 Response: 49251599
 Conc: 53.65 ng/ml

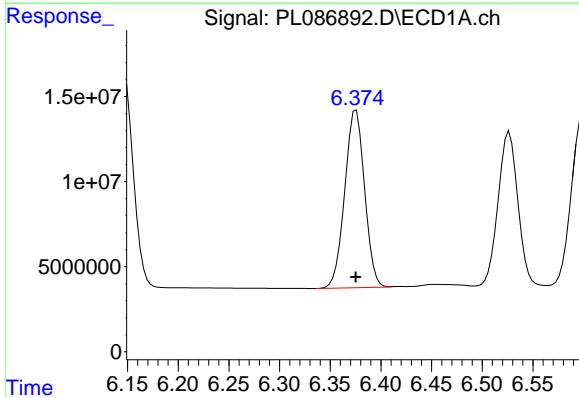


#13 Dieldrin
 R.T.: 6.147 min
 Delta R.T.: 0.000 min
 Response: 175339214
 Conc: 50.51 ng/ml

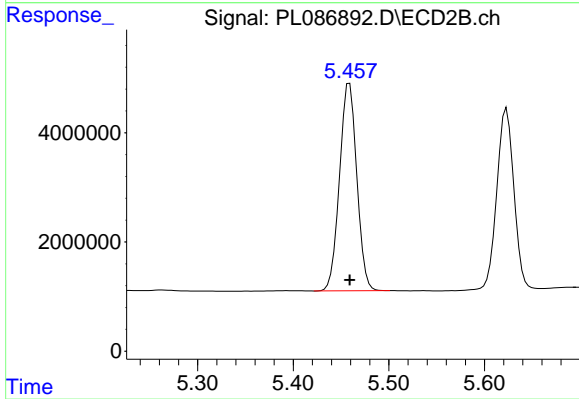
Instrument :
 ECD_L
 ClientSampleId :



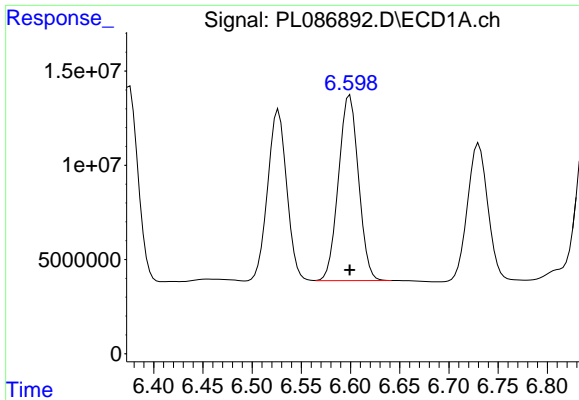
#13 Dieldrin
 R.T.: 5.185 min
 Delta R.T.: 0.000 min
 Response: 55713001
 Conc: 52.02 ng/ml



#14 Endrin
 R.T.: 6.376 min
 Delta R.T.: 0.000 min
 Response: 141986548
 Conc: 55.08 ng/ml



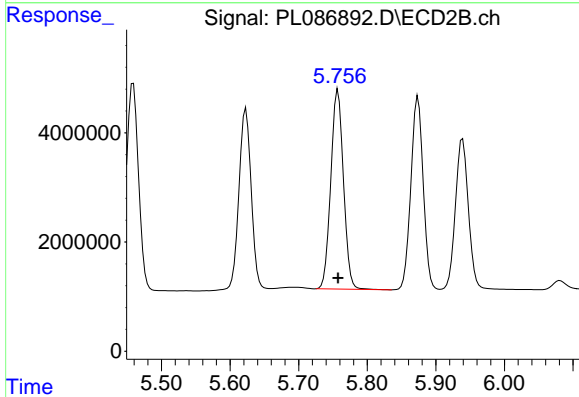
#14 Endrin
 R.T.: 5.459 min
 Delta R.T.: 0.000 min
 Response: 47903895
 Conc: 56.84 ng/ml



#15 Endosulfan II

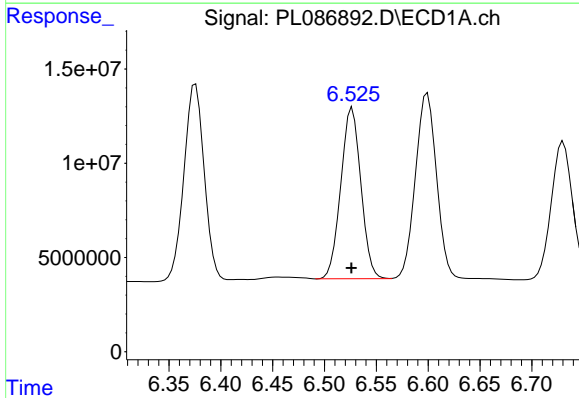
R.T.: 6.599 min
Delta R.T.: 0.000 min
Response: 139269058
Conc: 48.80 ng/ml

Instrument :
ECD_L
ClientSampleId :



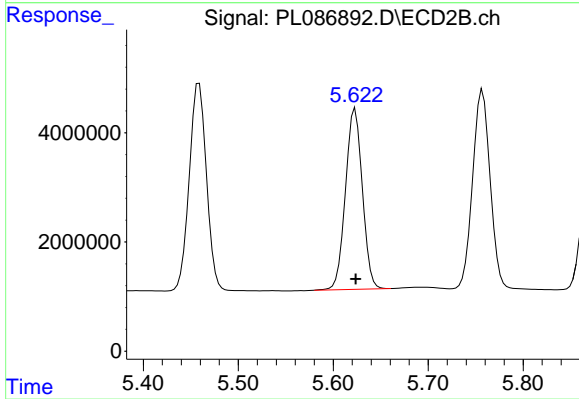
#15 Endosulfan II

R.T.: 5.757 min
Delta R.T.: 0.000 min
Response: 46905190
Conc: 50.51 ng/ml



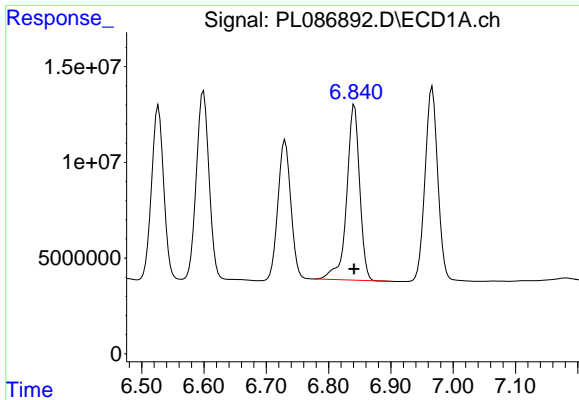
#16 4,4'-DDD

R.T.: 6.527 min
Delta R.T.: 0.001 min
Response: 122476227
Conc: 52.30 ng/ml



#16 4,4'-DDD

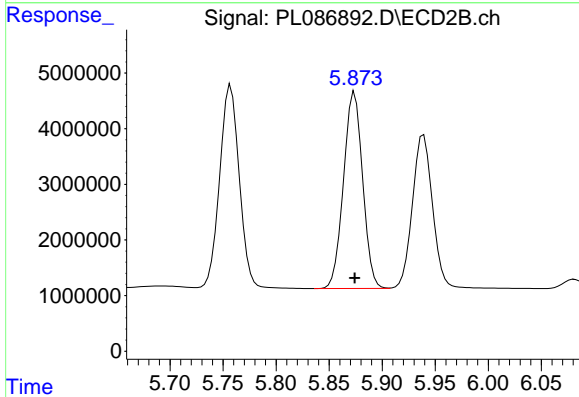
R.T.: 5.623 min
Delta R.T.: 0.000 min
Response: 40908460
Conc: 52.97 ng/ml



#17 4,4'-DDT

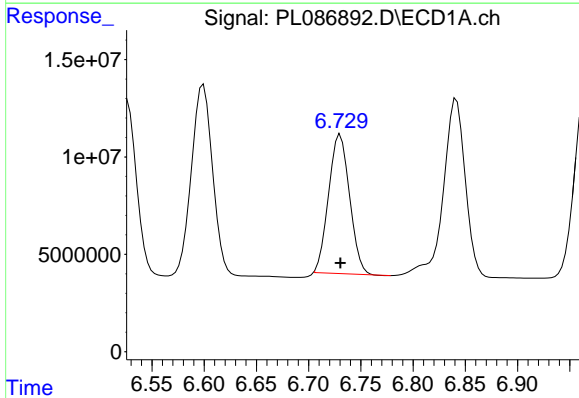
R.T.: 6.842 min
 Delta R.T.: 0.000 min
 Response: 133545597
 Conc: 52.03 ng/ml

Instrument :
 ECD_L
 ClientSampleId :



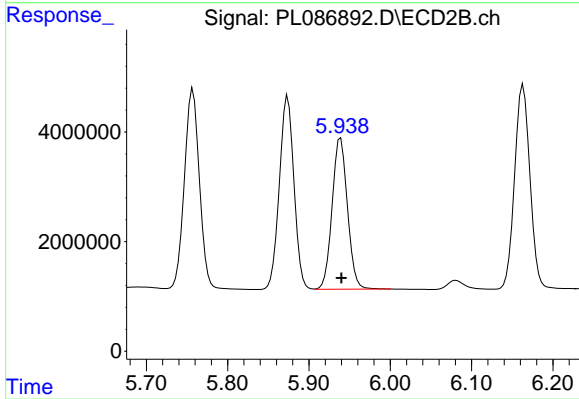
#17 4,4'-DDT

R.T.: 5.874 min
 Delta R.T.: 0.000 min
 Response: 44254244
 Conc: 54.87 ng/ml



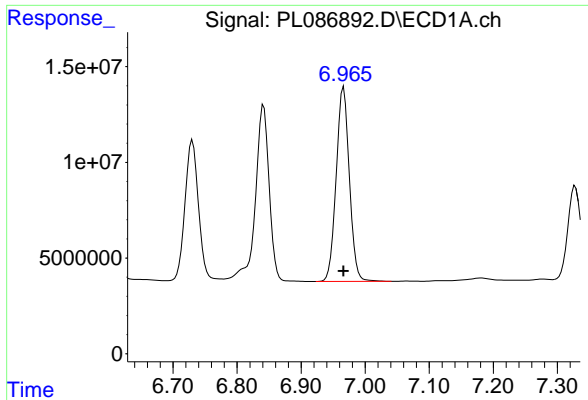
#18 Endrin aldehyde

R.T.: 6.730 min
 Delta R.T.: 0.000 min
 Response: 99781274
 Conc: 46.78 ng/ml



#18 Endrin aldehyde

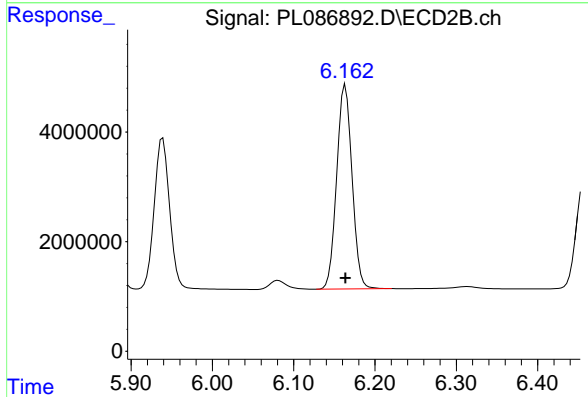
R.T.: 5.939 min
 Delta R.T.: 0.000 min
 Response: 36211415
 Conc: 51.83 ng/ml



#19 Endosulfan Sulfate

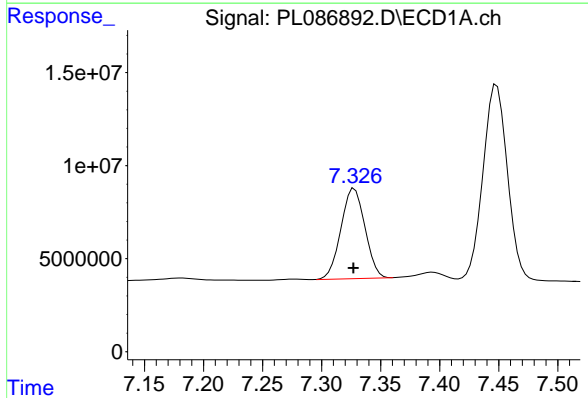
R.T.: 6.966 min
 Delta R.T.: 0.000 min
 Response: 145055050
 Conc: 50.79 ng/ml

Instrument :
 ECD_L
 ClientSampleId :



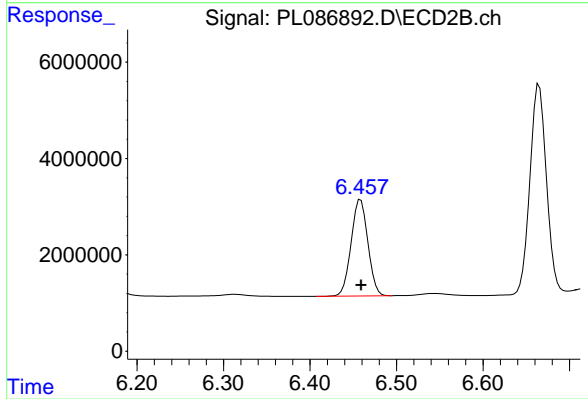
#19 Endosulfan Sulfate

R.T.: 6.164 min
 Delta R.T.: 0.000 min
 Response: 48943100
 Conc: 51.58 ng/ml



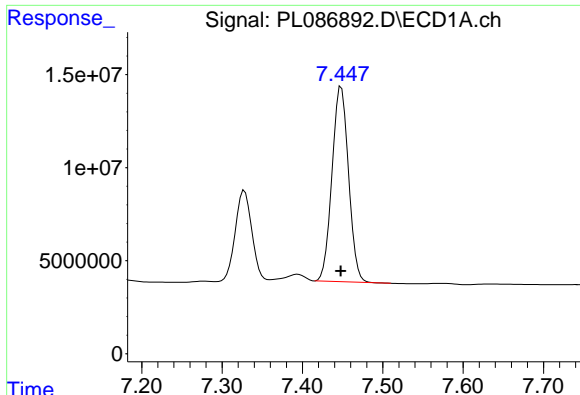
#20 Methoxychlor

R.T.: 7.328 min
 Delta R.T.: 0.000 min
 Response: 68518948
 Conc: 51.89 ng/ml



#20 Methoxychlor

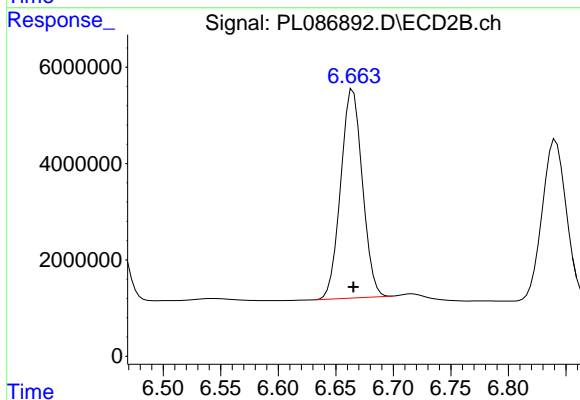
R.T.: 6.458 min
 Delta R.T.: 0.000 min
 Response: 26877989
 Conc: 52.22 ng/ml



#21 Endrin ketone

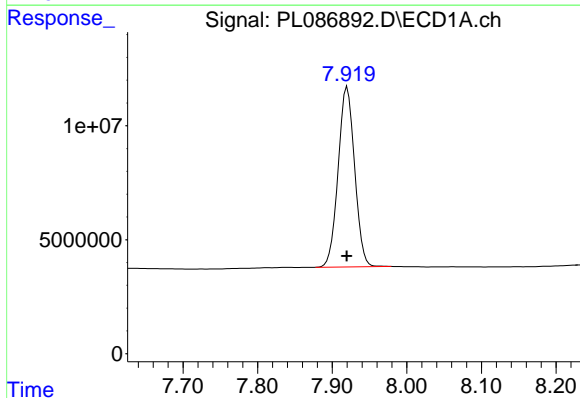
R.T.: 7.448 min
 Delta R.T.: 0.000 min
 Response: 149948947
 Conc: 50.16 ng/ml

Instrument :
 ECD_L
 ClientSampleId :



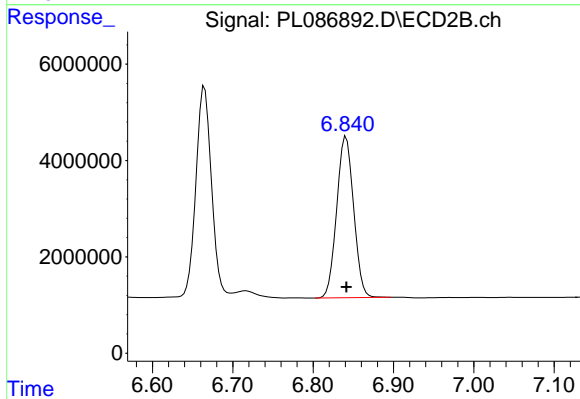
#21 Endrin ketone

R.T.: 6.665 min
 Delta R.T.: 0.000 min
 Response: 57047081
 Conc: 49.98 ng/ml



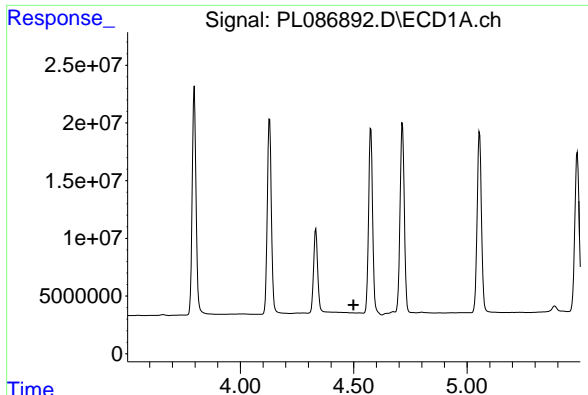
#22 Mirex

R.T.: 7.920 min
 Delta R.T.: 0.000 min
 Response: 121418384
 Conc: 47.47 ng/ml



#22 Mirex

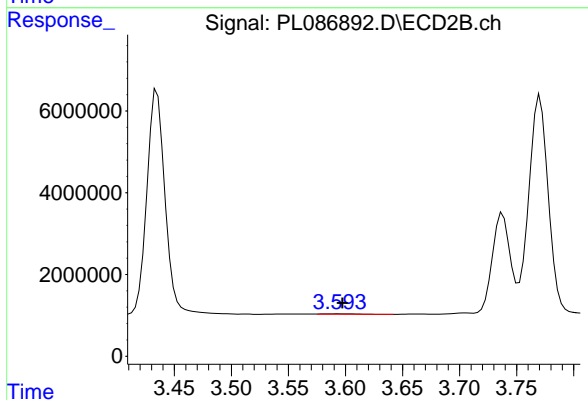
R.T.: 6.841 min
 Delta R.T.: 0.000 min
 Response: 49053243
 Conc: 47.26 ng/ml



#23 Chlordane-1

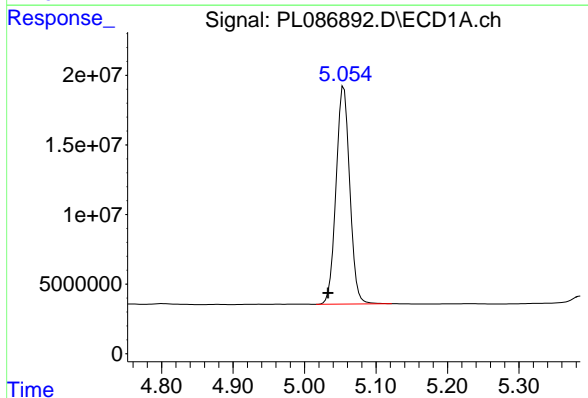
R.T.: 0.000 min
 Exp R.T.: 4.499 min
 Response: 0
 Conc: N.D.

Instrument :
 ECD_L
 ClientSampleId :



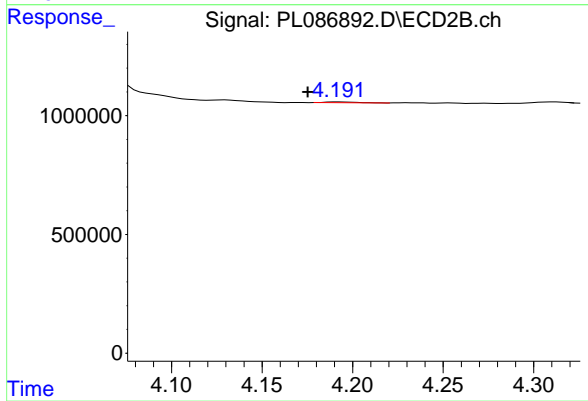
#23 Chlordane-1

R.T.: 3.594 min
 Delta R.T.: -0.004 min
 Response: 239758
 Conc: 6.99 ng/ml



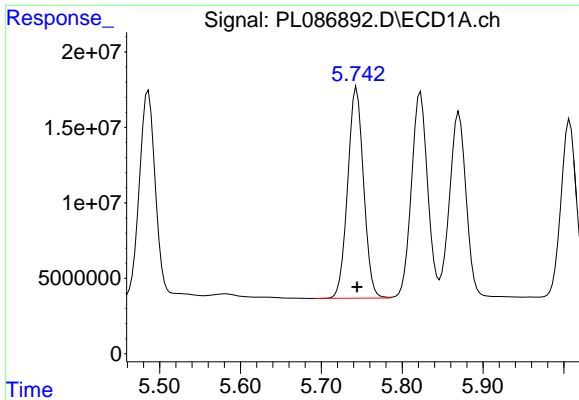
#24 Chlordane-2

R.T.: 5.055 min
 Delta R.T.: 0.022 min
 Response: 207776489
 Conc: 1472.84 ng/ml



#24 Chlordane-2

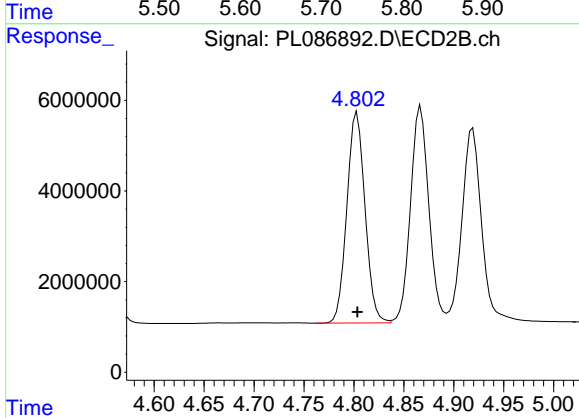
R.T.: 4.192 min
 Delta R.T.: 0.017 min
 Response: 38905
 Conc: 0.95 ng/ml



#25 Chlordane-3

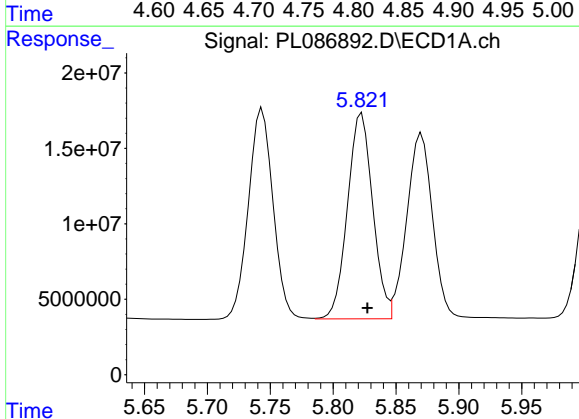
R.T.: 5.744 min
 Delta R.T.: 0.000 min
 Response: 190953153
 Conc: 360.82 ng/ml

Instrument :
 ECD_L
 ClientSampleId :



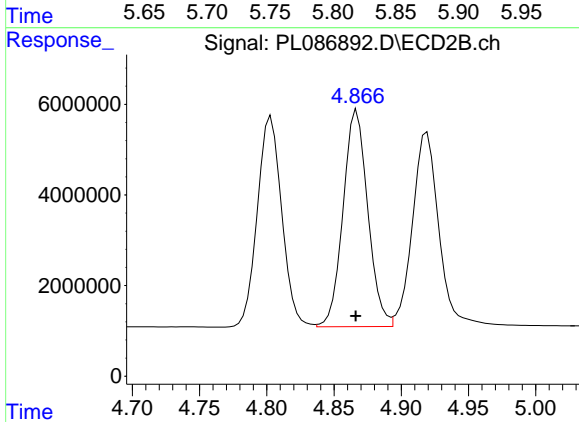
#25 Chlordane-3

R.T.: 4.803 min
 Delta R.T.: 0.000 min
 Response: 58853303
 Conc: 537.43 ng/ml



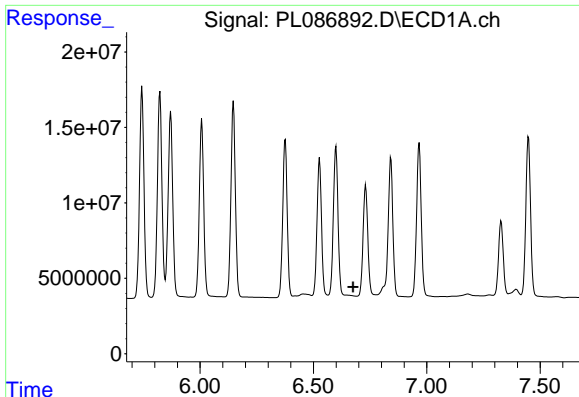
#26 Chlordane-4

R.T.: 5.823 min
 Delta R.T.: -0.004 min
 Response: 190272470
 Conc: 285.39 ng/ml



#26 Chlordane-4

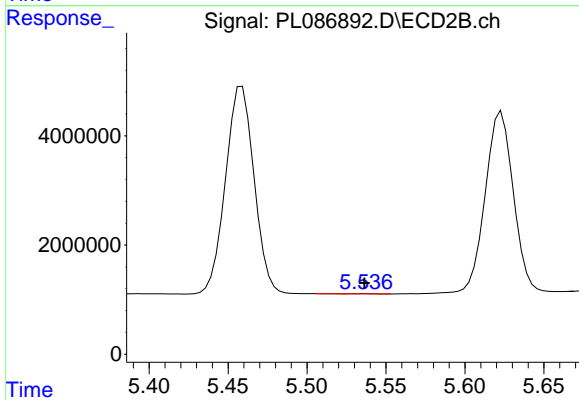
R.T.: 4.867 min
 Delta R.T.: 0.000 min
 Response: 61104664
 Conc: 449.61 ng/ml



#27 Chlordane-5

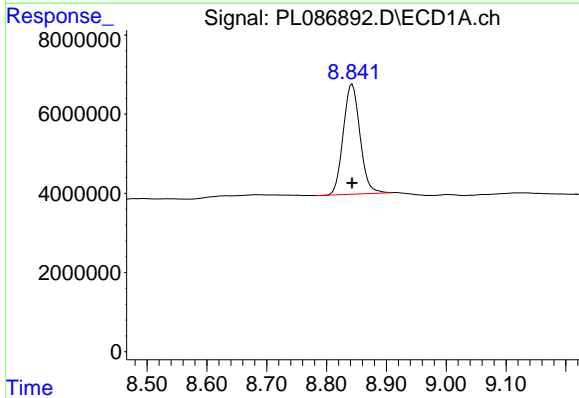
R.T.: 0.000 min
 Exp R.T.: 6.675 min
 Response: 0
 Conc: N.D.

Instrument :
 ECD_L
 ClientSampleId :



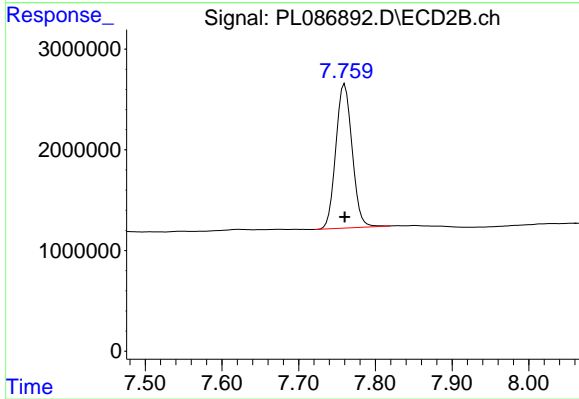
#27 Chlordane-5

R.T.: 5.537 min
 Delta R.T.: 0.000 min
 Response: 8006
 Conc: 0.26 ng/ml



#28 Decachlorobiphenyl

R.T.: 8.843 min
 Delta R.T.: 0.000 min
 Response: 54010753
 Conc: 20.23 ng/ml



#28 Decachlorobiphenyl

R.T.: 7.760 min
 Delta R.T.: 0.000 min
 Response: 21200635
 Conc: 19.23 ng/ml