

Data Path : Z:\pestpcbsrv\HPCHEM1\ECD\_L\Data\PL120222\  
 Data File : PL079548.D  
 Signal(s) : Signal #1: ECD1A.ch Signal #2: ECD2B.ch  
 Acq On : 02 Dec 2022 09:00  
 Operator : AR\AJ  
 Sample : I.BLK  
 Misc :  
 ALS Vial : 2 Sample Multiplier: 1

Instrument :  
 ECD\_L  
 ClientSampleId :

Integration File signal 1: autoint1.e  
 Integration File signal 2: autoint2.e  
 Quant Time: Dec 02 12:17:57 2022  
 Quant Method : Z:\pestpcbsrv\HPCHEM1\ECD\_L\methods\PL112322.M  
 Quant Title : GC Extractables  
 QLast Update : Thu Nov 24 00:09:49 2022  
 Response via : Initial Calibration  
 Integrator: ChemStation

Volume Inj. : 1 µl  
 Signal #1 Phase : ZB-MR2 Signal #2 Phase: ZB-MR1  
 Signal #1 Info : 30M x 0.32mm x0.2 Signal #2 Info : 30M x 0.32mm x0.5µm

Compound	RT#1	RT#2	Resp#1	Resp#2	ng/ml	ng/ml
-----						
System Monitoring Compounds						
1) SA Tetrachlo...	3.321	2.566	53696265	58738260	23.770	21.579
2) SA Decachlor...	8.771	7.633	44105352	46089359	22.710	19.619
Target Compounds						
2) A alpha-BHC	0.000	3.038	0	264847	N.D.	0.061 #
4) MA Heptachlor	4.690	3.700	386799	93139	0.117	0.024 #
5) MB Aldrin	0.000	3.991f	0	413385	N.D.	0.111 #
6) B beta-BHC	0.000	3.676	0	483765	N.D.	0.319 #
7) B delta-BHC	4.541f	3.893	2243838	160323	0.809	0.042 #
8) B Heptachlo...	5.464	4.455	24570788	4650344	8.606	1.378 #
11) B alpha-Chl...	5.771	4.755f	281337	16888590	0.098	5.043 #
12) B 4,4'-DDE	5.966	0.000	781794	0	0.313	N.D. #
13) MA Dieldrin	0.000	5.097	0	7996603	N.D.	2.372 #
14) MA Endrin	0.000	5.389f	0	6088623	N.D.	2.013 #
15) B Endosulfa...	6.559f	0.000	405620	0	0.180	N.D. #
17) MA 4,4'-DDT	6.830f	5.767	605745	511237	0.267	0.196 #
18) B Endrin al...	6.681f	5.808f	54138	148031	0.030	0.070 #
19) B Endosulfa...	0.000	6.060	0	723933	N.D.	0.257 #
23) Chlordane-1	0.000	3.534	0	640434	N.D.	6.021 #
24) Chlordane-2	0.000	4.096	0	11502681	N.D.	98.244 #
26) Chlordane-4	5.771f	4.755f	281337	16888590	0.553	46.607 #

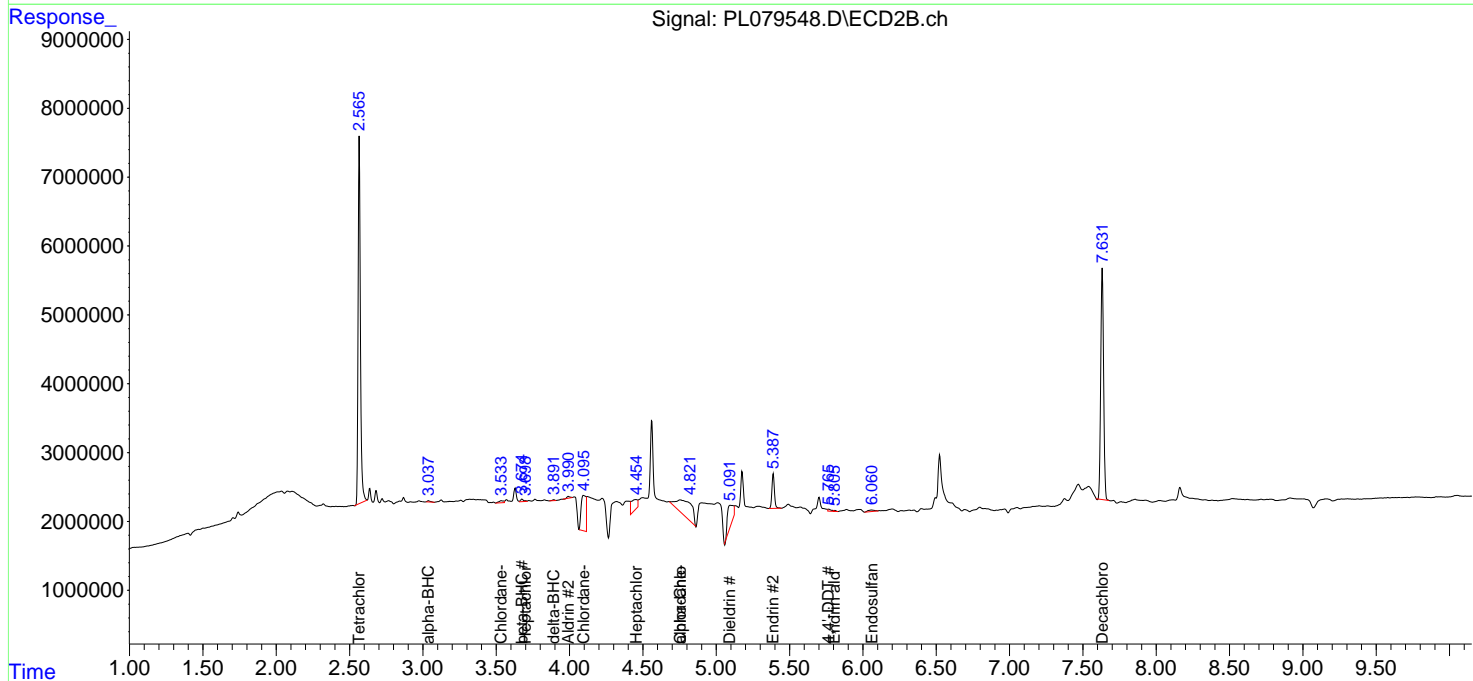
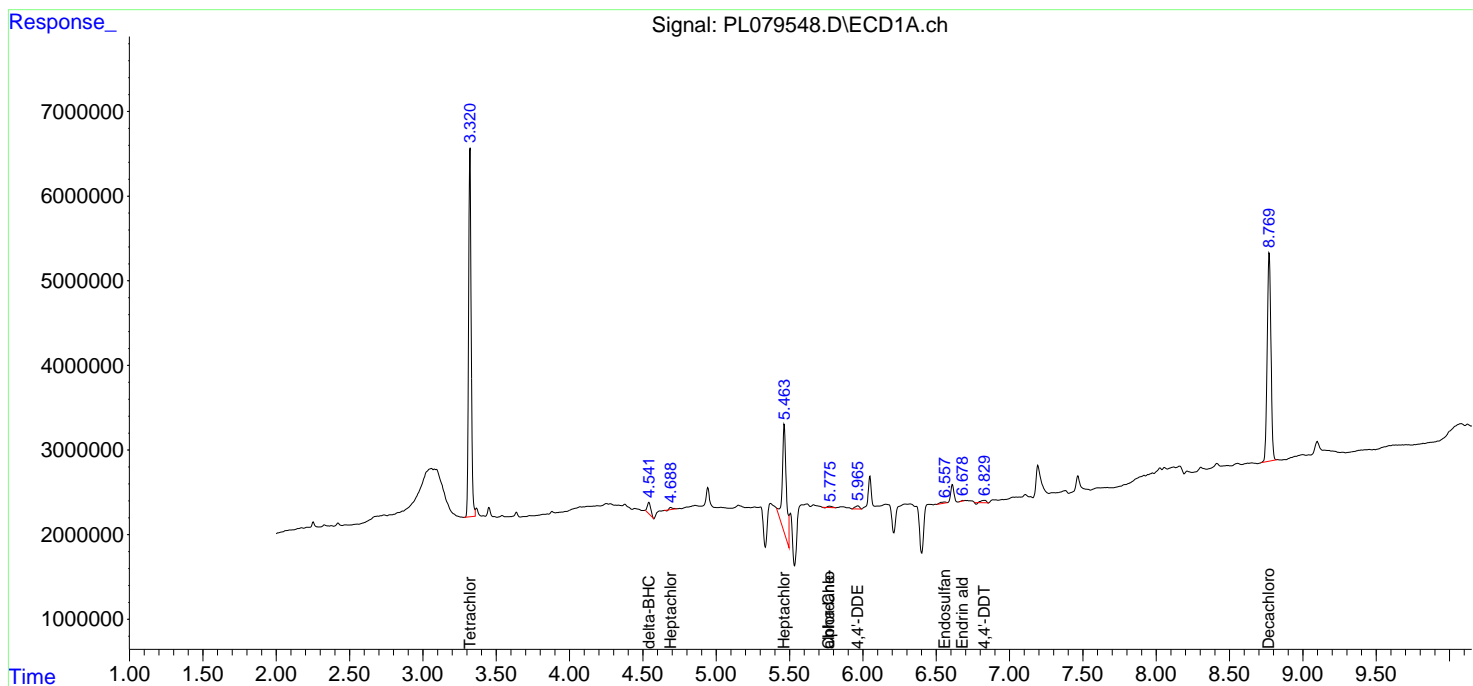
(f)=RT Delta > 1/2 Window (#)=Amounts differ by > 25% (m)=manual int.

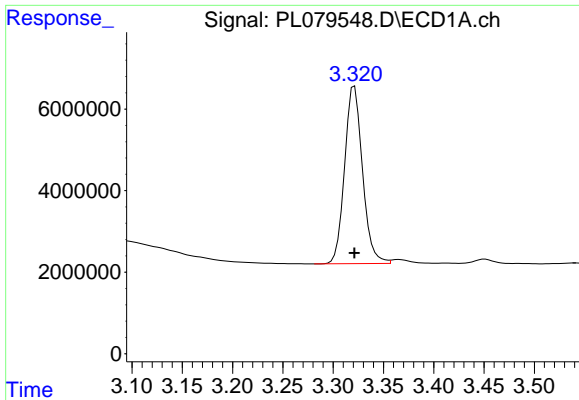
Data Path : Z:\pestpcbsrv\HPCHEM1\ECD\_L\Data\PL120222\  
 Data File : PL079548.D  
 Signal(s) : Signal #1: ECD1A.ch Signal #2: ECD2B.ch  
 Acq On : 02 Dec 2022 09:00  
 Operator : AR\AJ  
 Sample : I.BLK  
 Misc :  
 ALS Vial : 2 Sample Multiplier: 1

Instrument :  
 ECD\_L  
 ClientSampleId :

Integration File signal 1: autoint1.e  
 Integration File signal 2: autoint2.e  
 Quant Time: Dec 02 12:17:57 2022  
 Quant Method : Z:\pestpcbsrv\HPCHEM1\ECD\_L\methods\PL112322.M  
 Quant Title : GC Extractables  
 QLast Update : Thu Nov 24 00:09:49 2022  
 Response via : Initial Calibration  
 Integrator: ChemStation

Volume Inj. : 1 µl  
 Signal #1 Phase : ZB-MR2 Signal #2 Phase: ZB-MR1  
 Signal #1 Info : 30M x 0.32mm x0.2 Signal #2 Info : 30M x 0.32mm x0.5µm

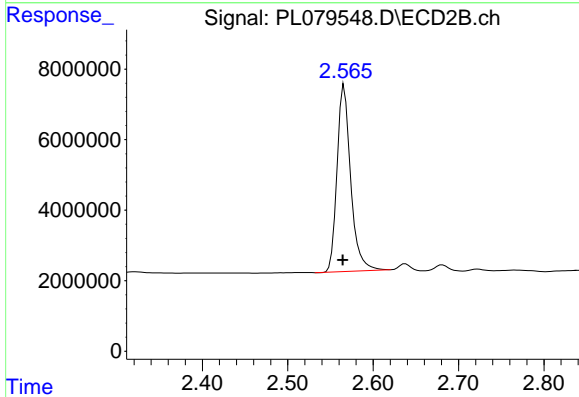




#1 Tetrachloro-m-xylene

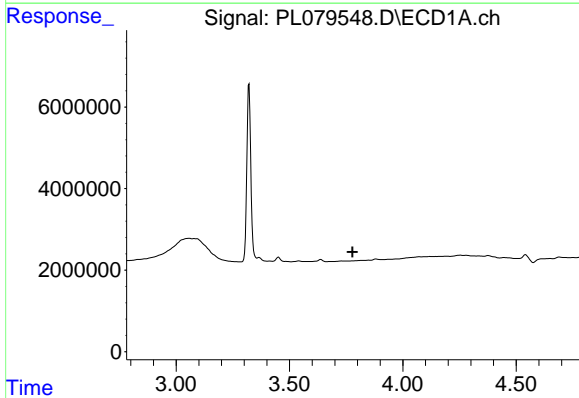
R.T.: 3.321 min  
 Delta R.T.: 0.000 min  
 Response: 53696265  
 Conc: 23.77 ng/ml

Instrument :  
 ECD\_L  
 ClientSampleId :



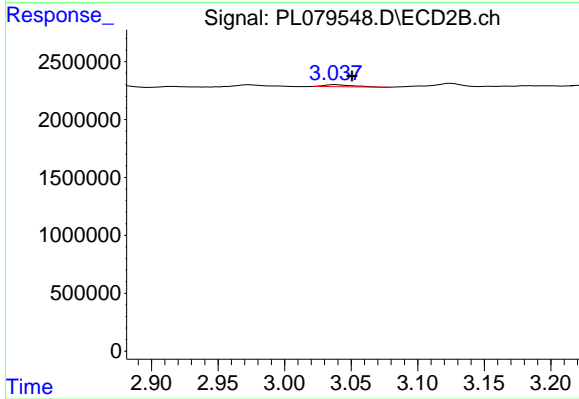
#1 Tetrachloro-m-xylene

R.T.: 2.566 min  
 Delta R.T.: 0.002 min  
 Response: 58738260  
 Conc: 21.58 ng/ml



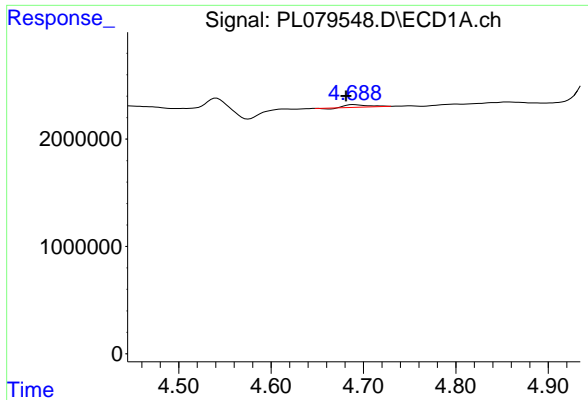
#2 alpha-BHC

R.T.: 0.000 min  
 Exp R.T. : 3.778 min  
 Response: 0  
 Conc: N.D.



#2 alpha-BHC

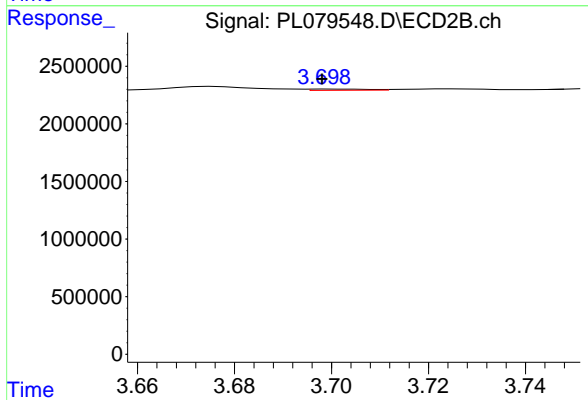
R.T.: 3.038 min  
 Delta R.T.: -0.013 min  
 Response: 264847  
 Conc: 0.06 ng/ml



#4 Heptachlor

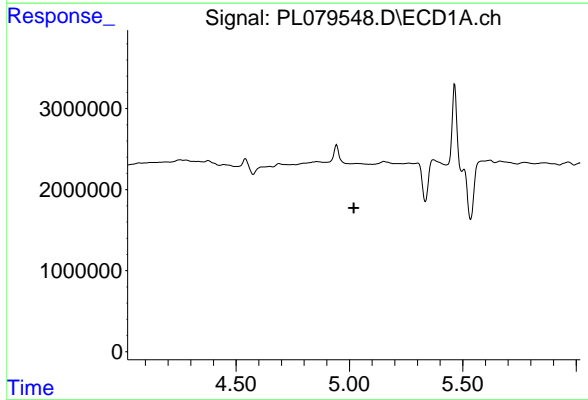
R.T.: 4.690 min  
 Delta R.T.: 0.008 min  
 Response: 386799  
 Conc: 0.12 ng/ml

Instrument :  
 ECD\_L  
 ClientSampleId :



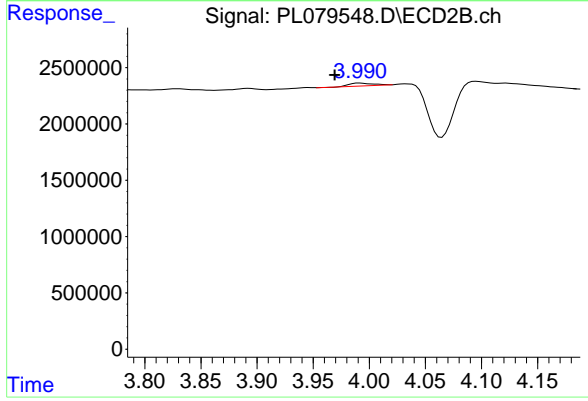
#4 Heptachlor

R.T.: 3.700 min  
 Delta R.T.: 0.002 min  
 Response: 93139  
 Conc: 0.02 ng/ml



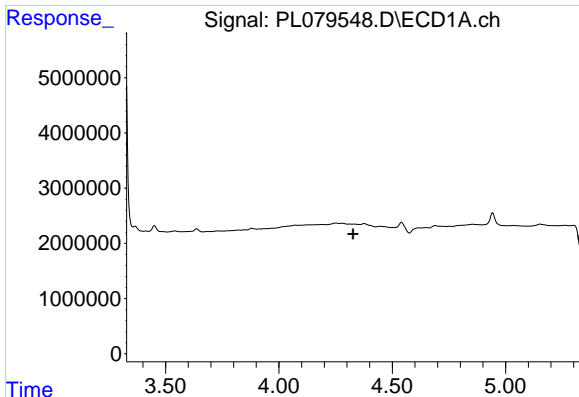
#5 Aldrin

R.T.: 0.000 min  
 Exp R.T. : 5.019 min  
 Response: 0  
 Conc: N.D.



#5 Aldrin

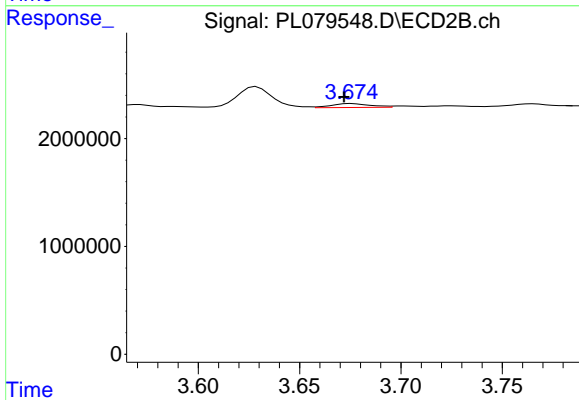
R.T.: 3.991 min  
 Delta R.T.: 0.022 min  
 Response: 413385  
 Conc: 0.11 ng/ml



#6 beta-BHC

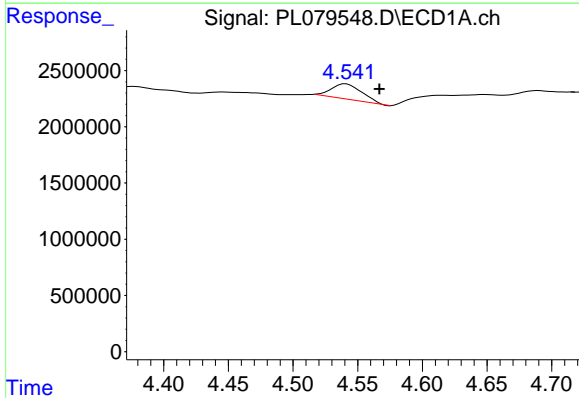
R.T.: 0.000 min  
 Exp R.T.: 4.327 min  
 Response: 0  
 Conc: N.D.

Instrument :  
 ECD\_L  
 ClientSampleId :



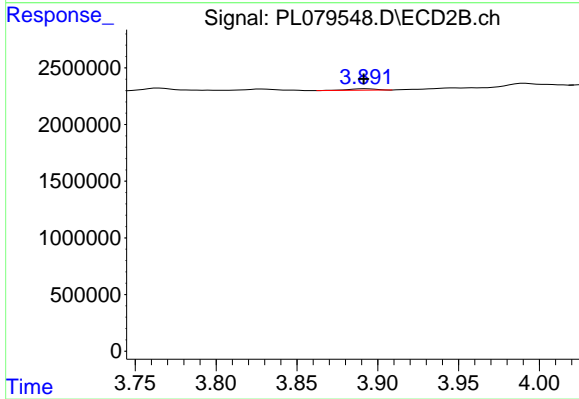
#6 beta-BHC

R.T.: 3.676 min  
 Delta R.T.: 0.004 min  
 Response: 483765  
 Conc: 0.32 ng/ml



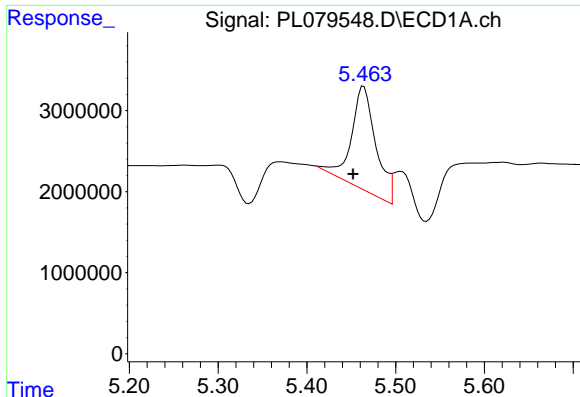
#7 delta-BHC

R.T.: 4.541 min  
 Delta R.T.: -0.026 min  
 Response: 2243838  
 Conc: 0.81 ng/ml



#7 delta-BHC

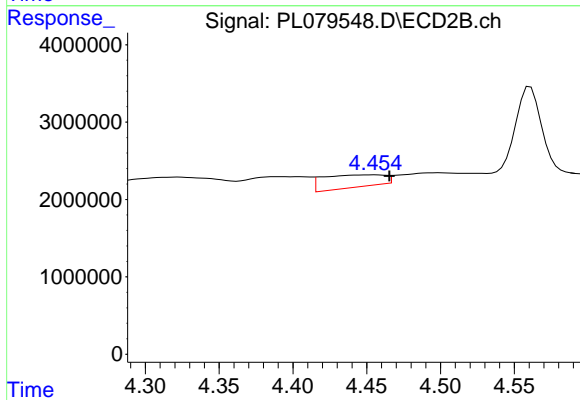
R.T.: 3.893 min  
 Delta R.T.: 0.002 min  
 Response: 160323  
 Conc: 0.04 ng/ml



#8 Heptachlor epoxide

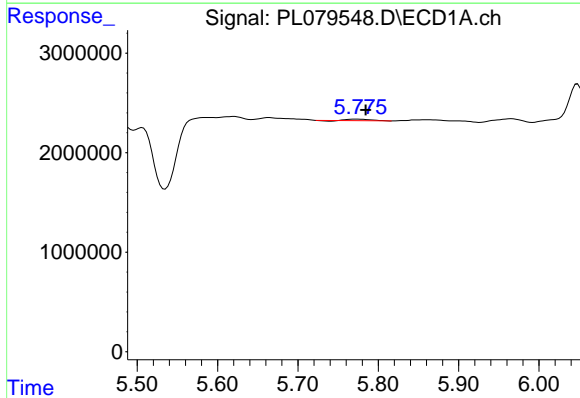
R.T.: 5.464 min  
 Delta R.T.: 0.012 min  
 Response: 24570788  
 Conc: 8.61 ng/ml

Instrument :  
 ECD\_L  
 ClientSampleId :



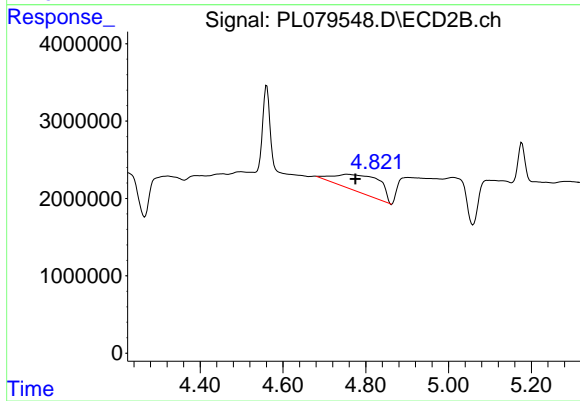
#8 Heptachlor epoxide

R.T.: 4.455 min  
 Delta R.T.: -0.011 min  
 Response: 4650344  
 Conc: 1.38 ng/ml



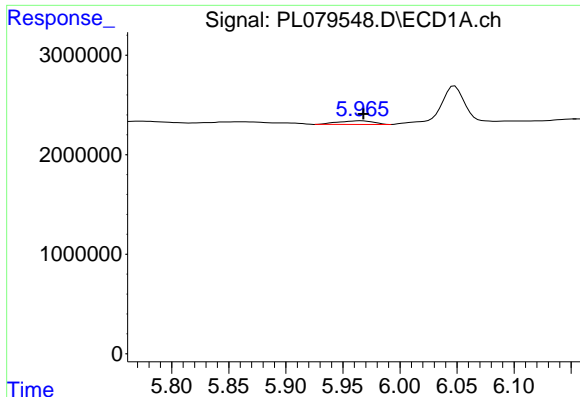
#11 alpha-Chlordane

R.T.: 5.771 min  
 Delta R.T.: -0.014 min  
 Response: 281337  
 Conc: 0.10 ng/ml



#11 alpha-Chlordane

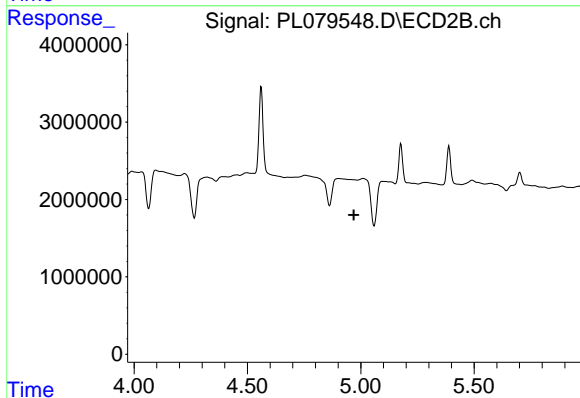
R.T.: 4.755 min  
 Delta R.T.: -0.020 min  
 Response: 16888590  
 Conc: 5.04 ng/ml



#12 4,4'-DDE

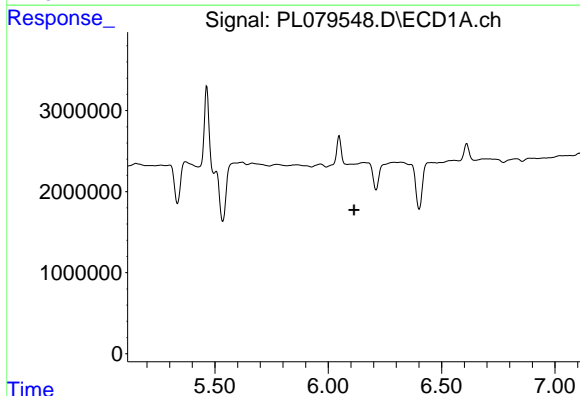
R.T.: 5.966 min  
 Delta R.T.: -0.002 min  
 Response: 781794  
 Conc: 0.31 ng/ml

Instrument :  
 ECD\_L  
 ClientSampleId :



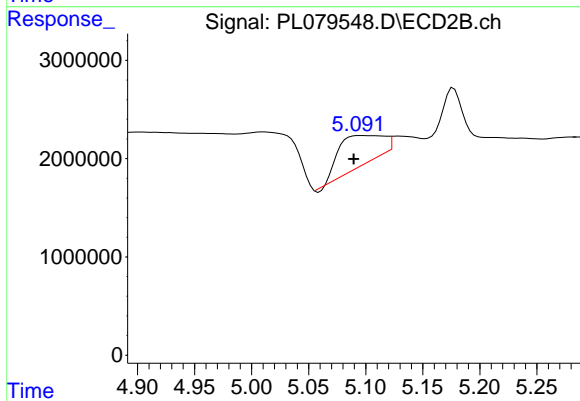
#12 4,4'-DDE

R.T.: 0.000 min  
 Exp R.T. : 4.970 min  
 Response: 0  
 Conc: N.D.



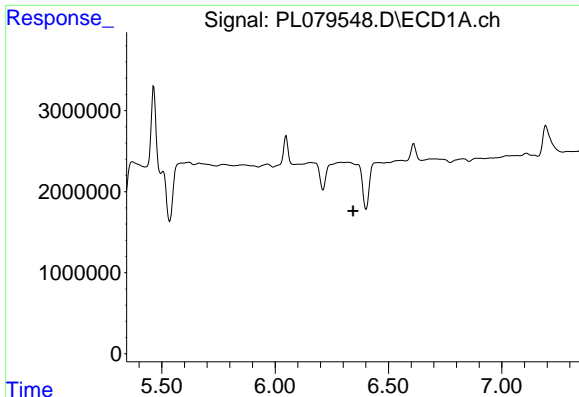
#13 Dieldrin

R.T.: 0.000 min  
 Exp R.T. : 6.114 min  
 Response: 0  
 Conc: N.D.



#13 Dieldrin

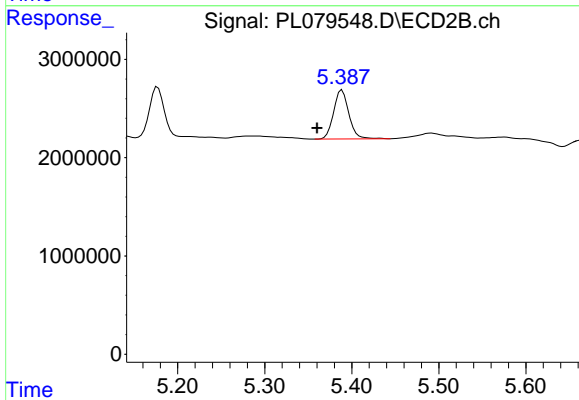
R.T.: 5.097 min  
 Delta R.T.: 0.008 min  
 Response: 7996603  
 Conc: 2.37 ng/ml



#14 Endrin

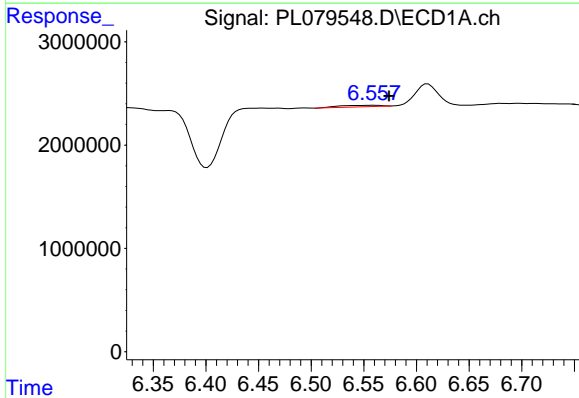
R.T.: 0.000 min  
 Exp R.T.: 6.344 min  
 Response: 0  
 Conc: N.D.

Instrument :  
 ECD\_L  
 ClientSampleId :



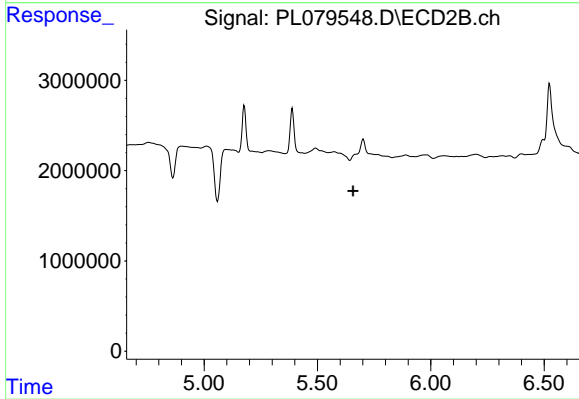
#14 Endrin

R.T.: 5.389 min  
 Delta R.T.: 0.029 min  
 Response: 6088623  
 Conc: 2.01 ng/ml



#15 Endosulfan II

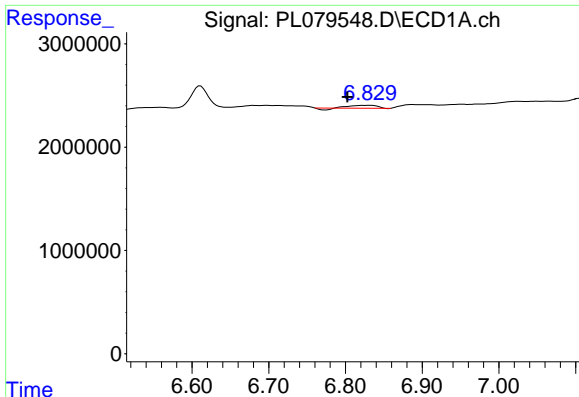
R.T.: 6.559 min  
 Delta R.T.: -0.015 min  
 Response: 405620  
 Conc: 0.18 ng/ml



#15 Endosulfan II

R.T.: 0.000 min  
 Exp R.T.: 5.657 min  
 Response: 0  
 Conc: N.D.

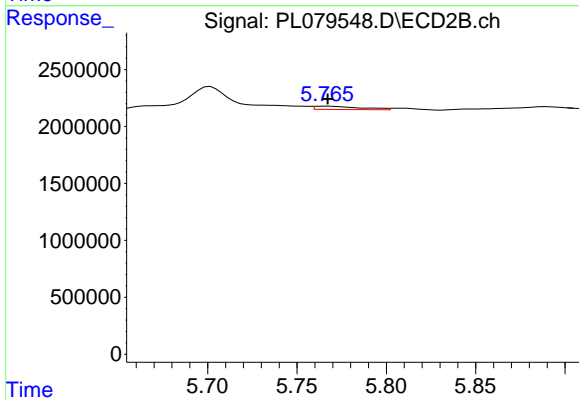




#17 4,4'-DDT

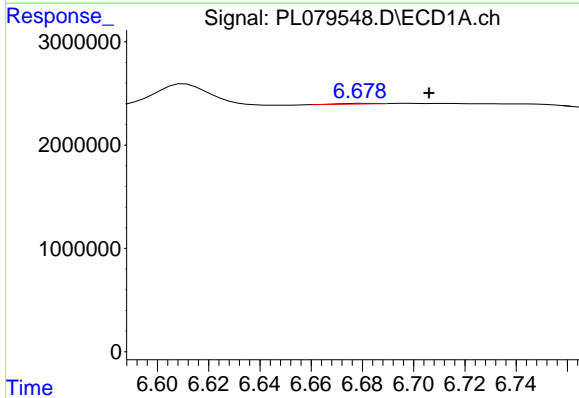
R.T.: 6.830 min  
 Delta R.T.: 0.028 min  
 Response: 605745  
 Conc: 0.27 ng/ml

Instrument :  
 ECD\_L  
 ClientSampleId :



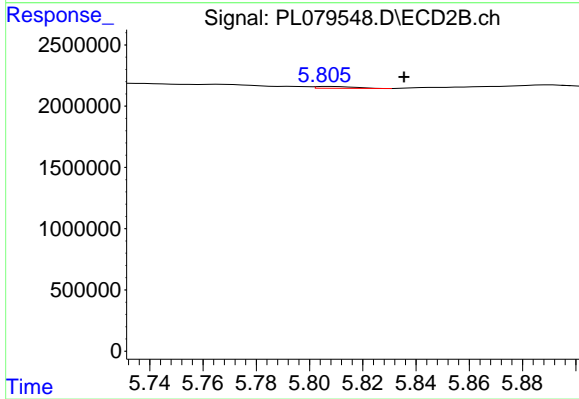
#17 4,4'-DDT

R.T.: 5.767 min  
 Delta R.T.: 0.000 min  
 Response: 511237  
 Conc: 0.20 ng/ml



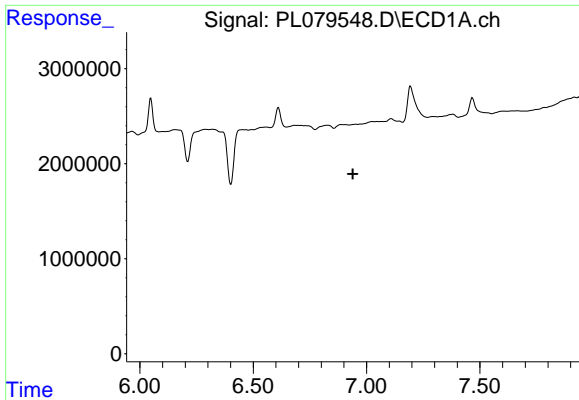
#18 Endrin aldehyde

R.T.: 6.681 min  
 Delta R.T.: -0.025 min  
 Response: 54138  
 Conc: 0.03 ng/ml



#18 Endrin aldehyde

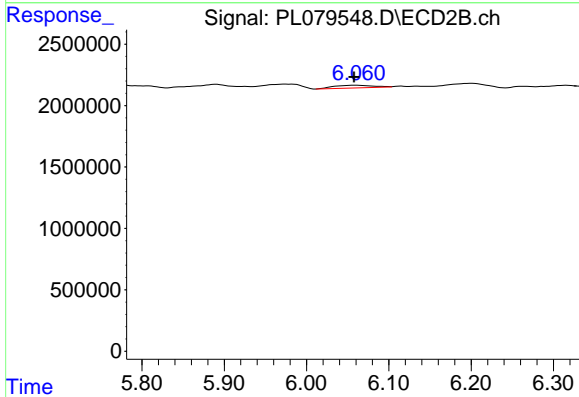
R.T.: 5.808 min  
 Delta R.T.: -0.028 min  
 Response: 148031  
 Conc: 0.07 ng/ml



#19 Endosulfan Sulfate

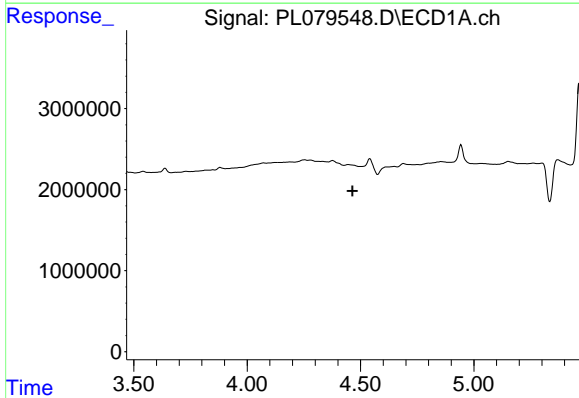
R.T.: 0.000 min  
 Exp R.T. : 6.939 min  
 Response: 0  
 Conc: N.D.

Instrument :  
 ECD\_L  
 ClientSampleId :



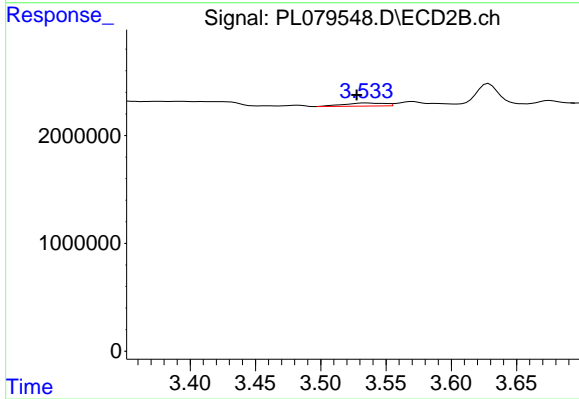
#19 Endosulfan Sulfate

R.T.: 6.060 min  
 Delta R.T.: 0.002 min  
 Response: 723933  
 Conc: 0.26 ng/ml



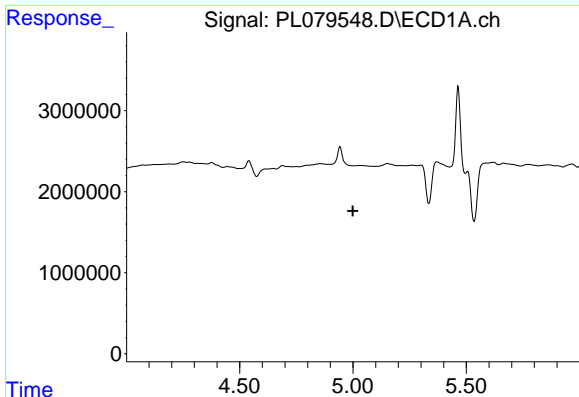
#23 Chlordane-1

R.T.: 0.000 min  
 Exp R.T. : 4.465 min  
 Response: 0  
 Conc: N.D.



#23 Chlordane-1

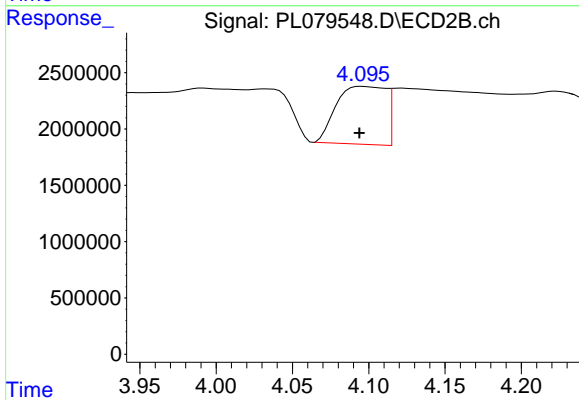
R.T.: 3.534 min  
 Delta R.T.: 0.007 min  
 Response: 640434  
 Conc: 6.02 ng/ml



#24 Chlordane-2

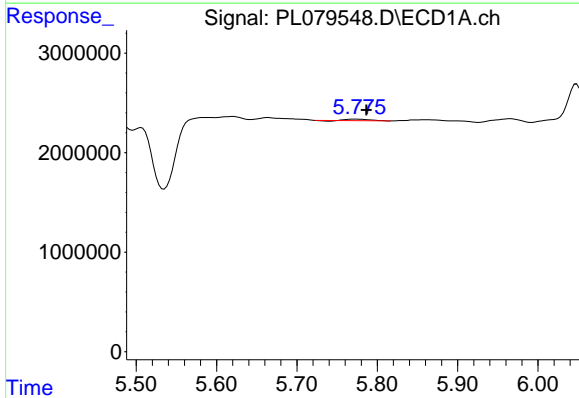
R.T.: 0.000 min  
 Exp R.T.: 4.999 min  
 Response: 0  
 Conc: N.D.

Instrument :  
 ECD\_L  
 ClientSampleId :



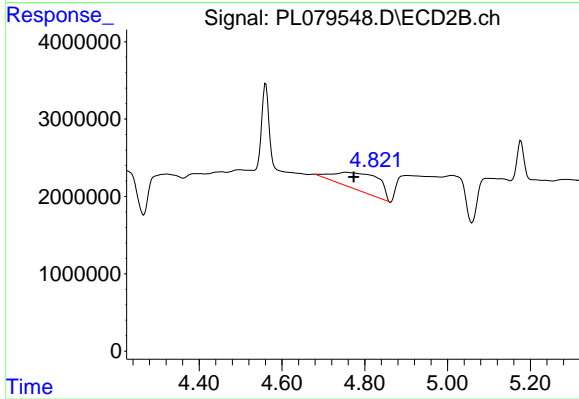
#24 Chlordane-2

R.T.: 4.096 min  
 Delta R.T.: 0.002 min  
 Response: 11502681  
 Conc: 98.24 ng/ml



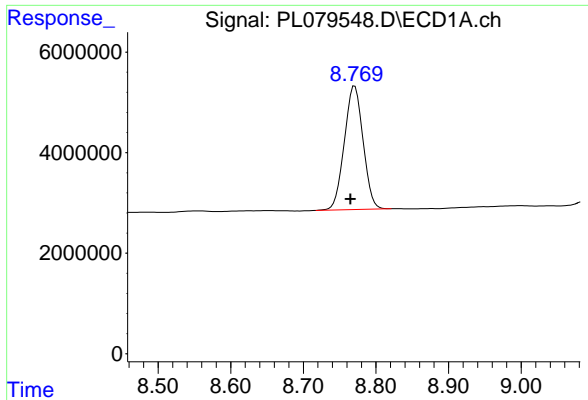
#26 Chlordane-4

R.T.: 5.771 min  
 Delta R.T.: -0.016 min  
 Response: 281337  
 Conc: 0.55 ng/ml



#26 Chlordane-4

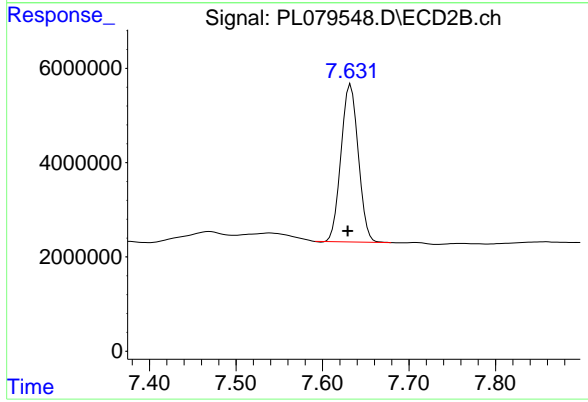
R.T.: 4.755 min  
 Delta R.T.: -0.018 min  
 Response: 16888590  
 Conc: 46.61 ng/ml



#28 Decachlorobiphenyl

R.T.: 8.771 min  
Delta R.T.: 0.006 min  
Response: 44105352  
Conc: 22.71 ng/ml

Instrument :  
ECD\_L  
ClientSampleId :



#28 Decachlorobiphenyl

R.T.: 7.633 min  
Delta R.T.: 0.003 min  
Response: 46089359  
Conc: 19.62 ng/ml