

Data Path : Z:\pestpcbsrv\HPCHEM1\ECD\_L\Data\PL120318\  
 Data File : PL042696.D  
 Signal(s) : Signal #1: ECD1A.ch Signal #2: ECD2B.ch  
 Acq On : 03 Dec 2018 17:30  
 Operator : AJ\SJ  
 Sample : PB115248BL  
 Misc :  
 ALS Vial : 13 Sample Multiplier: 1

Instrument :  
 ECD\_L  
 ClientSampleId :

Integration File signal 1: autoint1.e  
 Integration File signal 2: autoint2.e  
 Quant Time: Dec 03 23:58:27 2018  
 Quant Method : Z:\pestpcbsrv\HPCHEM1\ECD\_L\methods\PL112018.M  
 Quant Title : GC Extractables  
 QLast Update : Tue Nov 20 02:29:59 2018  
 Response via : Initial Calibration  
 Integrator: ChemStation

Volume Inj. : 2 µl  
 Signal #1 Phase : ZB-MR2 Signal #2 Phase: ZB-MR2  
 Signal #1 Info : 30M x 0.32mm x0.5 Signal #2 Info : 30M x 0.32mm x0.25µm

Compound	RT#1	RT#2	Resp#1	Resp#2	ng/ml	ng/ml
System Monitoring Compounds						
1) SA Tetrachlo...	3.475	4.101	90899415	44798221	15.450	15.576
28) SA Decachlor...	8.216	9.237	94163170	40840350	14.941	16.933
Target Compounds						
3) MA gamma-BHC...	0.000	4.790	0	3636738	N.D.	0.920 #
7) B delta-BHC	0.000	5.161	0	1332002	N.D.	0.362 #
8) B Heptachlo...	0.000	5.988	0	4681912	N.D.	1.306 #
9) A Endosulfan I	0.000	6.323f	0	3418085	N.D.	1.082 #
10) B gamma-Chl...	5.381	0.000	3001824	0	0.394	N.D. #
11) B alpha-Chl...	0.000	6.308	0	2243207	N.D.	0.671 #
14) MA Endrin	0.000	6.766f	0	4102486	N.D.	1.489 #
17) MA 4,4'-DDT	6.403	0.000	3966209	0	0.712	N.D. #
18) B Endrin al...	6.403f	0.000	3966209	0	0.763	N.D. #
23) Chlordane-1	0.000	5.161	0	1332002	N.D.	10.020 #
25) Chlordane-3	5.381	0.000	3001824	0	3.424	N.D. #
26) Chlordane-4	0.000	6.308	0	2243207	N.D.	4.100 #

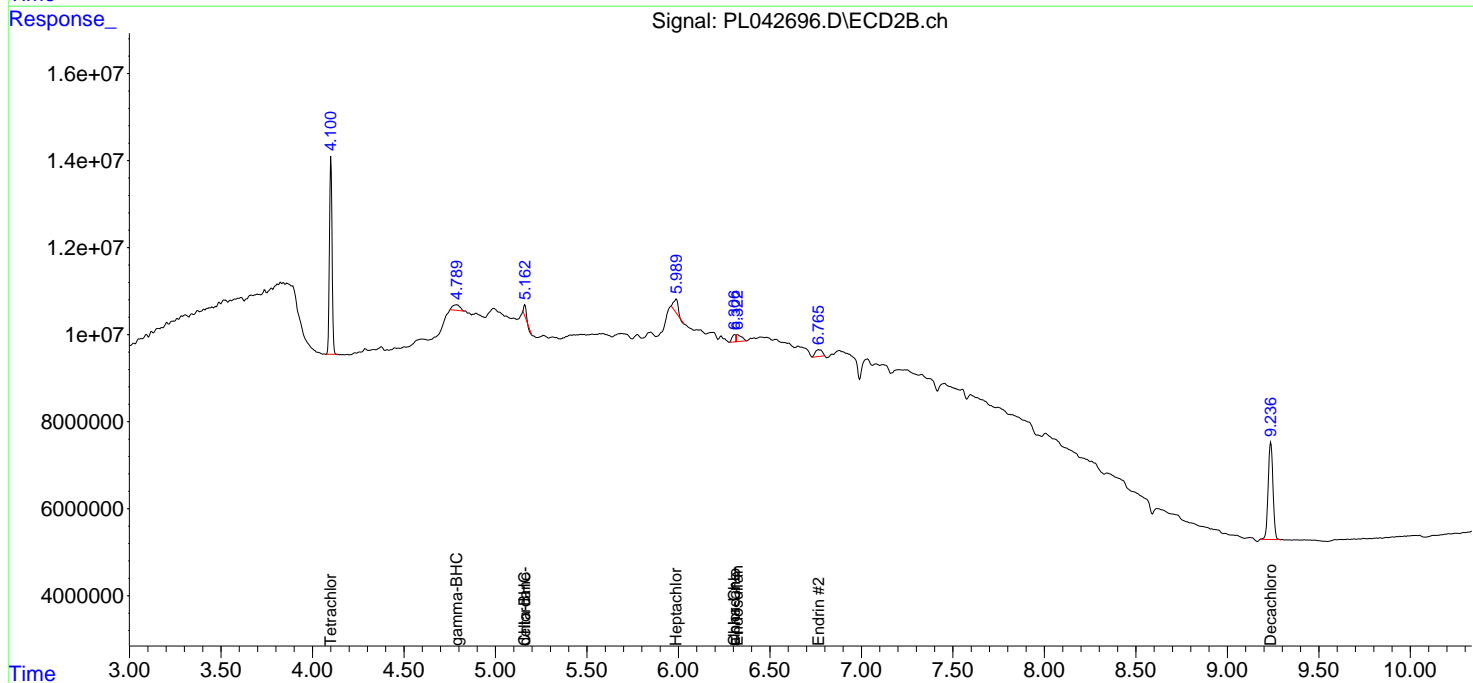
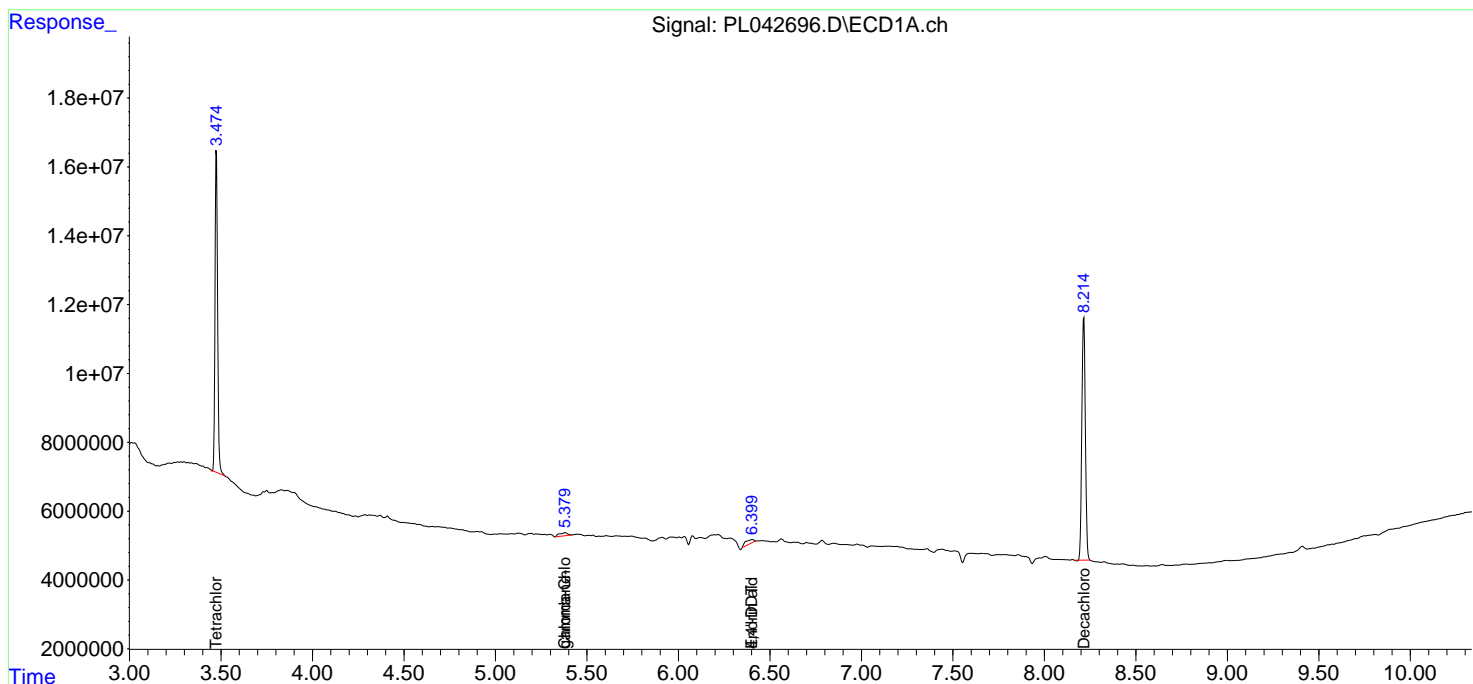
(f)=RT Delta > 1/2 Window (#)=Amounts differ by > 25% (m)=manual int.

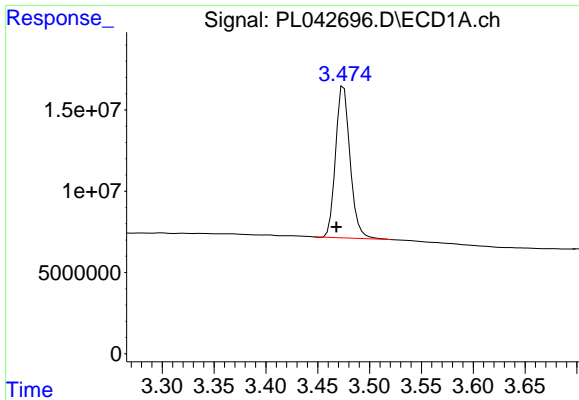
Data Path : Z:\pestpcbsrv\HPCHEM1\ECD\_L\Data\PL120318\  
 Data File : PL042696.D  
 Signal(s) : Signal #1: ECD1A.ch Signal #2: ECD2B.ch  
 Acq On : 03 Dec 2018 17:30  
 Operator : AJ\SJ  
 Sample : PB115248BL  
 Misc :  
 ALS Vial : 13 Sample Multiplier: 1

Instrument :  
 ECD\_L  
 ClientSampled :

Integration File signal 1: autoint1.e  
 Integration File signal 2: autoint2.e  
 Quant Time: Dec 03 23:58:27 2018  
 Quant Method : Z:\pestpcbsrv\HPCHEM1\ECD\_L\methods\PL112018.M  
 Quant Title : GC Extractables  
 QLast Update : Tue Nov 20 02:29:59 2018  
 Response via : Initial Calibration  
 Integrator: ChemStation

Volume Inj. : 2 µl  
 Signal #1 Phase : ZB-MR1 Signal #2 Phase: ZB-MR2  
 Signal #1 Info : 30M x 0.32mm x0.5 Signal #2 Info : 30M x 0.32mm x0.25µm

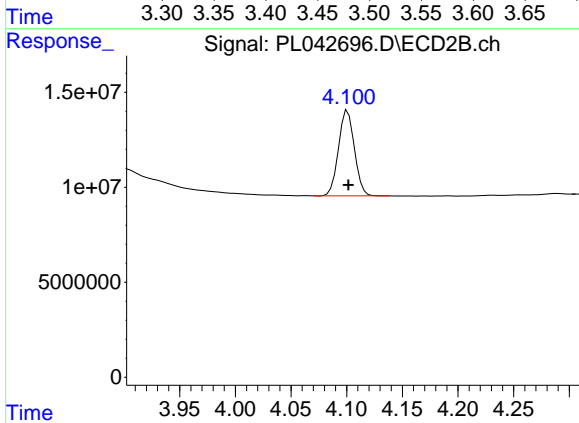




#1 Tetrachloro-m-xylene

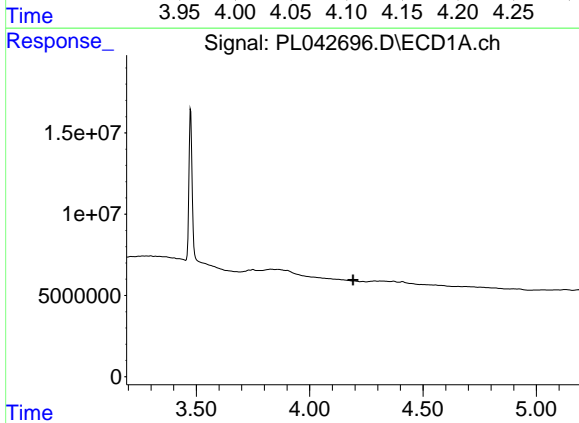
R.T.: 3.475 min  
 Delta R.T.: 0.007 min  
 Response: 90899415  
 Conc: 15.45 ng/ml

Instrument :  
 ECD\_L  
 ClientSampleId :



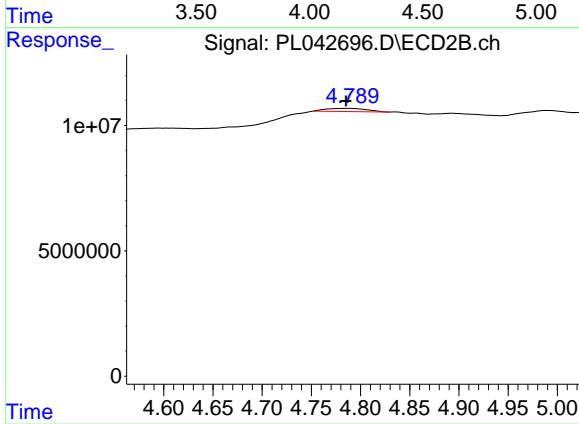
#1 Tetrachloro-m-xylene

R.T.: 4.101 min  
 Delta R.T.: 0.000 min  
 Response: 44798221  
 Conc: 15.58 ng/ml



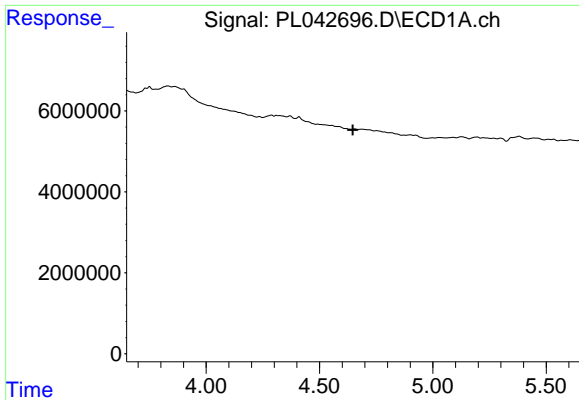
#3 gamma-BHC (Lindane)

R.T.: 0.000 min  
 Exp R.T. : 4.191 min  
 Response: 0  
 Conc: N.D.



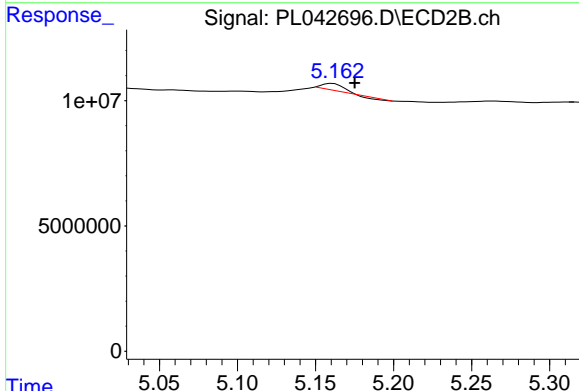
#3 gamma-BHC (Lindane)

R.T.: 4.790 min  
 Delta R.T.: 0.005 min  
 Response: 3636738  
 Conc: 0.92 ng/ml

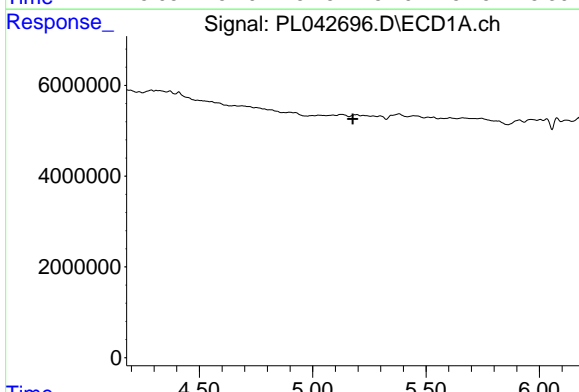


#7 delta-BHC  
 R.T.: 0.000 min  
 Exp R.T. : 4.646 min  
 Response: 0  
 Conc: N.D.

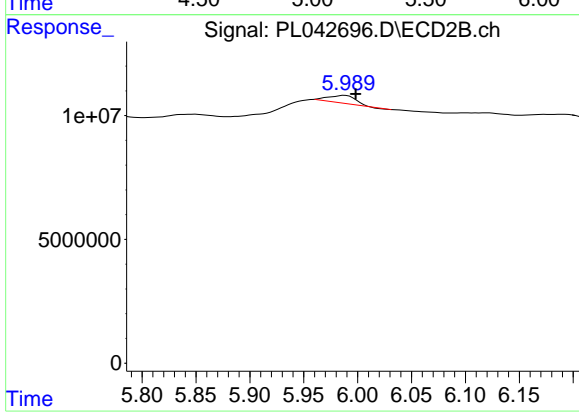
Instrument :  
 ECD\_L  
 ClientSampleId :



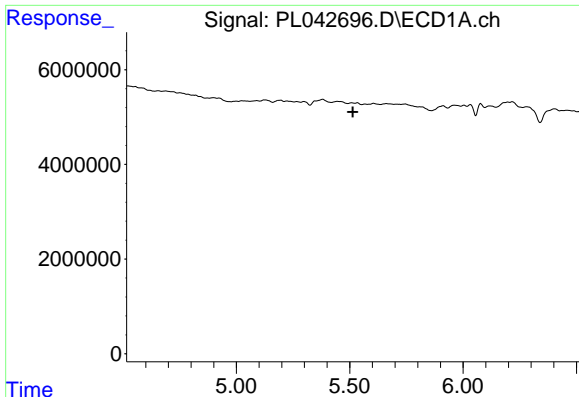
#7 delta-BHC  
 R.T.: 5.161 min  
 Delta R.T.: -0.014 min  
 Response: 1332002  
 Conc: 0.36 ng/ml



#8 Heptachlor epoxide  
 R.T.: 0.000 min  
 Exp R.T. : 5.177 min  
 Response: 0  
 Conc: N.D.



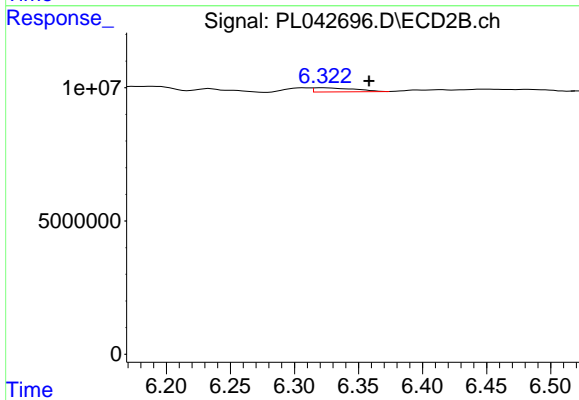
#8 Heptachlor epoxide  
 R.T.: 5.988 min  
 Delta R.T.: -0.010 min  
 Response: 4681912  
 Conc: 1.31 ng/ml



#9 Endosulfan I

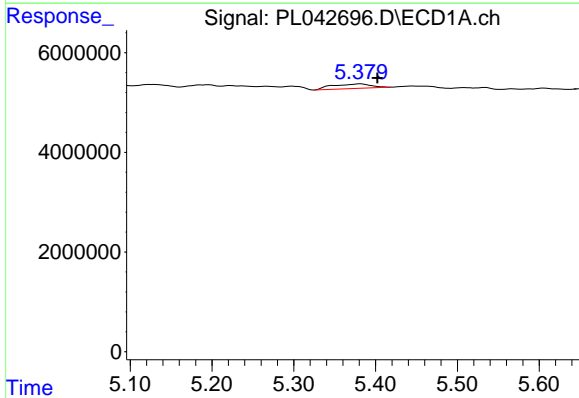
R.T.: 0.000 min  
 Exp R.T.: 5.514 min  
 Response: 0  
 Conc: N.D.

Instrument :  
 ECD\_L  
 ClientSampleId :



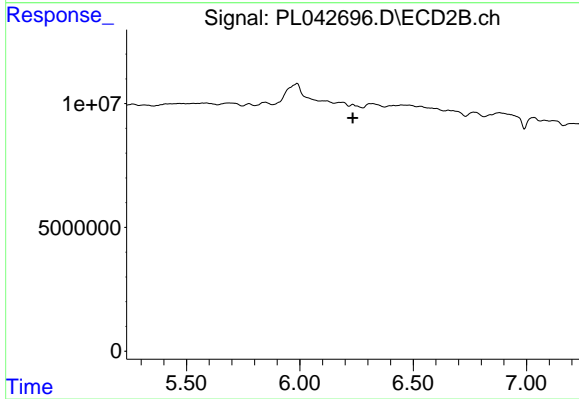
#9 Endosulfan I

R.T.: 6.323 min  
 Delta R.T.: -0.035 min  
 Response: 3418085  
 Conc: 1.08 ng/ml



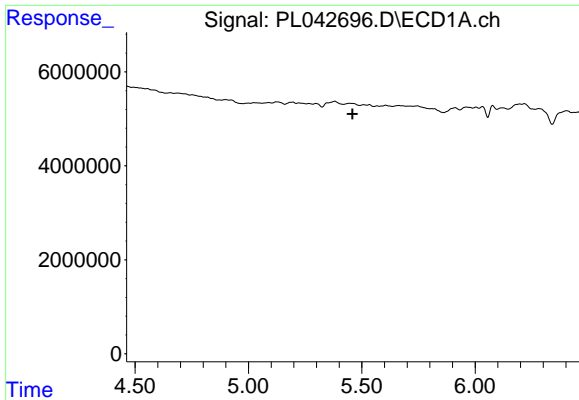
#10 gamma-Chlordane

R.T.: 5.381 min  
 Delta R.T.: -0.021 min  
 Response: 3001824  
 Conc: 0.39 ng/ml



#10 gamma-Chlordane

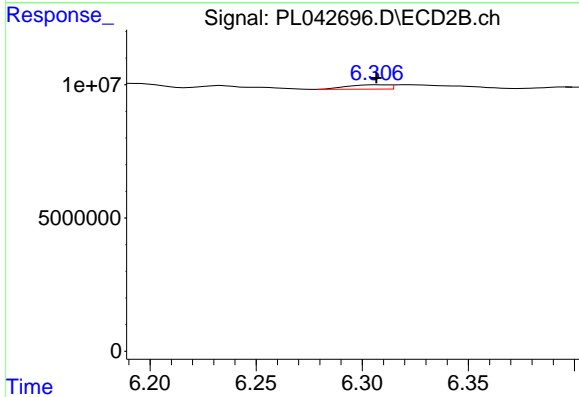
R.T.: 0.000 min  
 Exp R.T.: 6.233 min  
 Response: 0  
 Conc: N.D.



#11 alpha-Chlordane

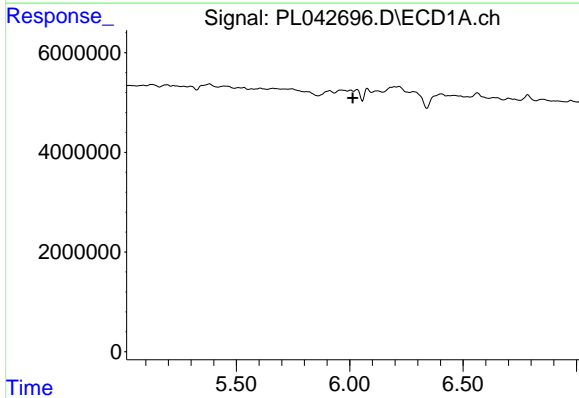
R.T.: 0.000 min  
 Exp R.T. : 5.459 min  
 Response: 0  
 Conc: N.D.

Instrument :  
 ECD\_L  
 ClientSampleId :



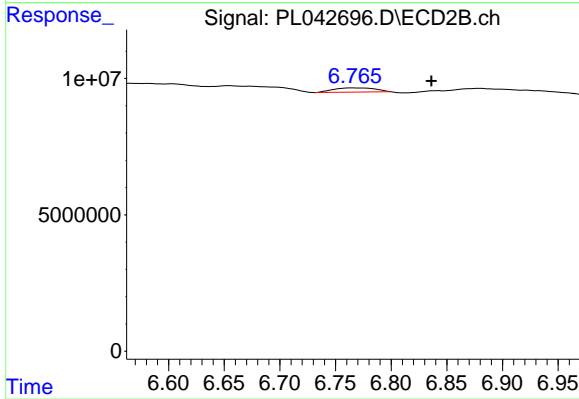
#11 alpha-Chlordane

R.T.: 6.308 min  
 Delta R.T.: 0.000 min  
 Response: 2243207  
 Conc: 0.67 ng/ml



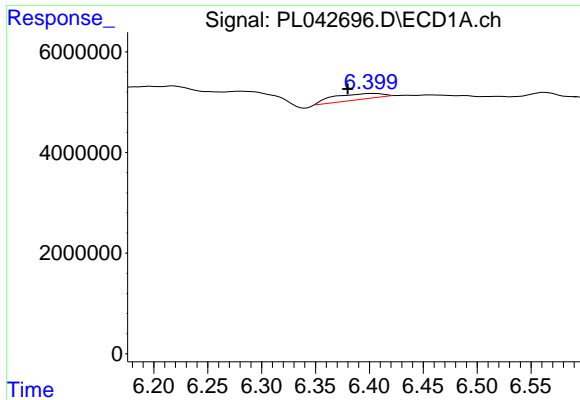
#14 Endrin

R.T.: 0.000 min  
 Exp R.T. : 6.013 min  
 Response: 0  
 Conc: N.D.



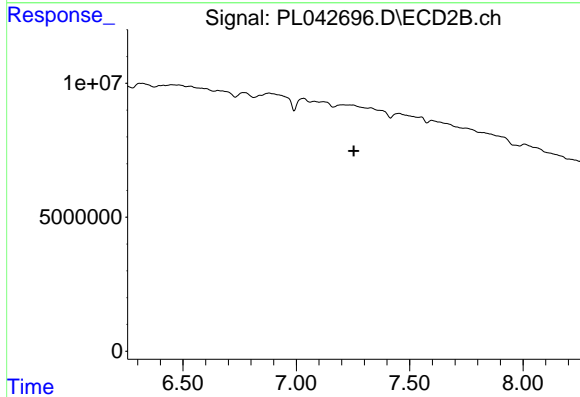
#14 Endrin

R.T.: 6.766 min  
 Delta R.T.: -0.070 min  
 Response: 4102486  
 Conc: 1.49 ng/ml

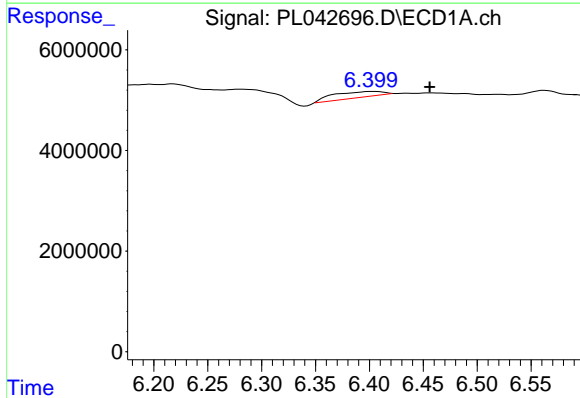


#17 4,4'-DDT  
 R.T.: 6.403 min  
 Delta R.T.: 0.023 min  
 Response: 3966209  
 Conc: 0.71 ng/ml

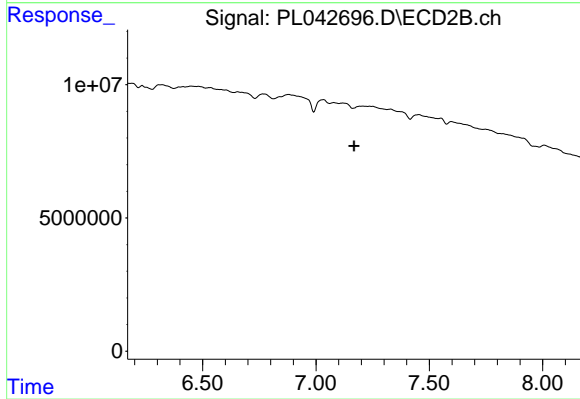
Instrument :  
 ECD\_L  
 ClientSampleId :



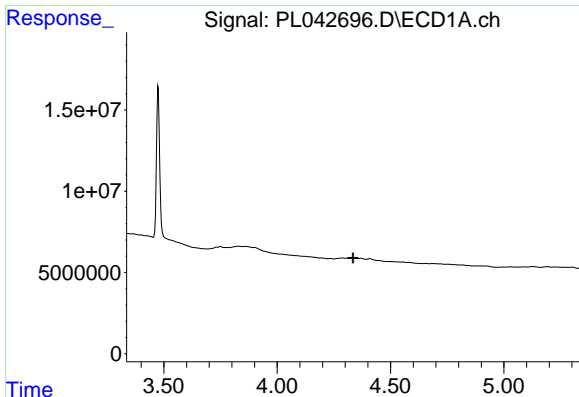
#17 4,4'-DDT  
 R.T.: 0.000 min  
 Exp R.T. : 7.253 min  
 Response: 0  
 Conc: N.D.



#18 Endrin aldehyde  
 R.T.: 6.403 min  
 Delta R.T.: -0.053 min  
 Response: 3966209  
 Conc: 0.76 ng/ml



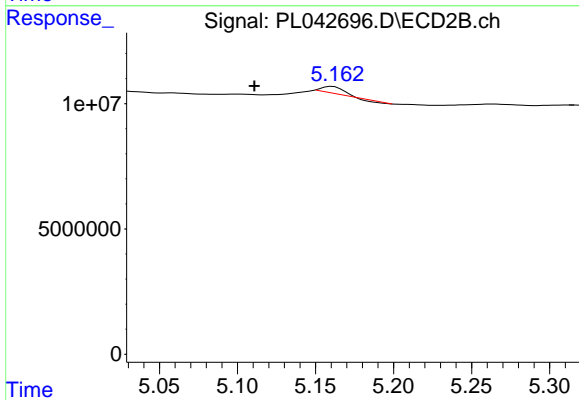
#18 Endrin aldehyde  
 R.T.: 0.000 min  
 Exp R.T. : 7.169 min  
 Response: 0  
 Conc: N.D.



#23 Chlordane-1

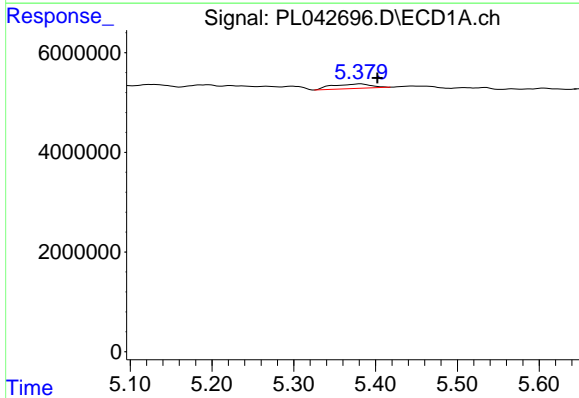
R.T.: 0.000 min  
 Exp R.T. : 4.335 min  
 Response: 0  
 Conc: N.D.

Instrument :  
 ECD\_L  
 ClientSampleId :



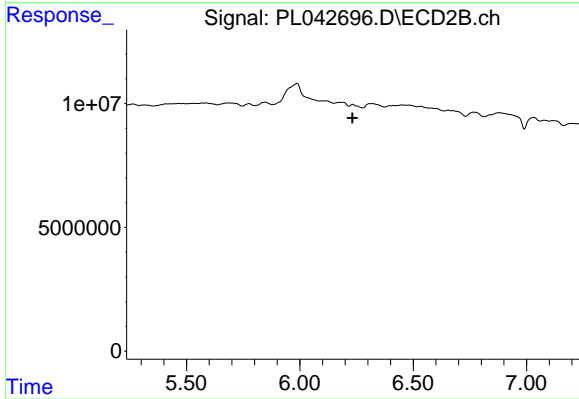
#23 Chlordane-1

R.T.: 5.161 min  
 Delta R.T.: 0.050 min  
 Response: 1332002  
 Conc: 10.02 ng/ml



#25 Chlordane-3

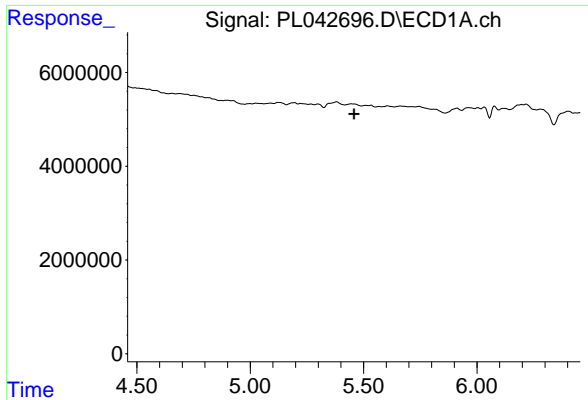
R.T.: 5.381 min  
 Delta R.T.: -0.021 min  
 Response: 3001824  
 Conc: 3.42 ng/ml



#25 Chlordane-3

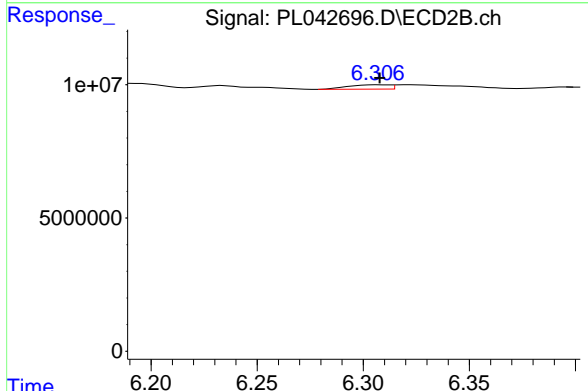
R.T.: 0.000 min  
 Exp R.T. : 6.233 min  
 Response: 0  
 Conc: N.D.



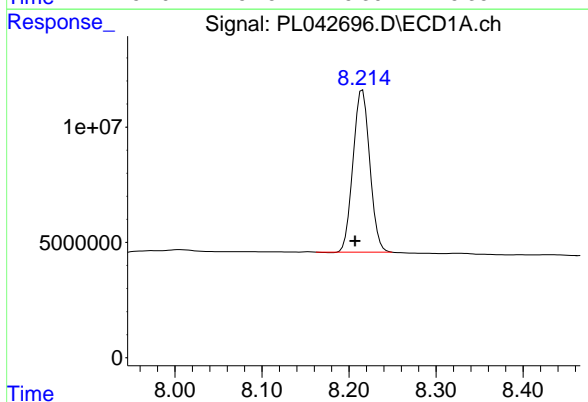


#26 Chlordane-4  
 R.T.: 0.000 min  
 Exp R.T.: 5.459 min  
 Response: 0  
 Conc: N.D.

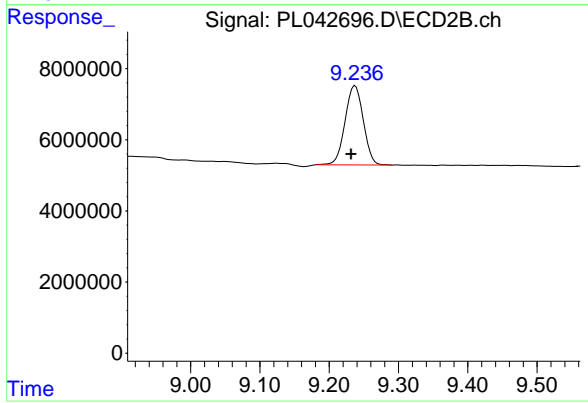
Instrument :  
 ECD\_L  
 ClientSampled :



#26 Chlordane-4  
 R.T.: 6.308 min  
 Delta R.T.: 0.000 min  
 Response: 2243207  
 Conc: 4.10 ng/ml



#28 Decachlorobiphenyl  
 R.T.: 8.216 min  
 Delta R.T.: 0.009 min  
 Response: 94163170  
 Conc: 14.94 ng/ml



#28 Decachlorobiphenyl  
 R.T.: 9.237 min  
 Delta R.T.: 0.006 min  
 Response: 40840350  
 Conc: 16.93 ng/ml