

Data Path : Z:\pestpcbsrv\HPCHEM1\ECD_L\Data\PL120318\
 Data File : PL042747.D
 Signal(s) : Signal #1: ECD1A.ch Signal #2: ECD2B.ch
 Acq On : 04 Dec 2018 05:30
 Operator : AJ\SJ
 Sample : PB115278BL
 Misc :
 ALS Vial : 58 Sample Multiplier: 1

Instrument :
 ECD_L
 ClientSampleId :

Integration File signal 1: autoint1.e
 Integration File signal 2: autoint2.e
 Quant Time: Dec 04 05:50:41 2018
 Quant Method : Z:\pestpcbsrv\HPCHEM1\ECD_L\methods\PL112018.M
 Quant Title : GC Extractables
 QLast Update : Tue Nov 20 02:29:59 2018
 Response via : Initial Calibration
 Integrator: ChemStation

Volume Inj. : 2 µl
 Signal #1 Phase : ZB-MR1 Signal #2 Phase: ZB-MR2
 Signal #1 Info : 30M x 0.32mm x0.5 Signal #2 Info : 30M x 0.32mm x0.25µm

Compound	RT#1	RT#2	Resp#1	Resp#2	ng/ml	ng/ml
System Monitoring Compounds						
1) SA Tetrachlo...	3.467	4.102	112.3E6	59865930	19.091	20.815
28) SA Decachlor...	8.205	9.234	124.3E6	50717131	19.721	21.028
Target Compounds						
6) B beta-BHC	4.410f	4.904f	2283445	-139805	0.645	N.D. #
8) B Heptachlo...	0.000	5.995	0	2547328	N.D.	0.710 #

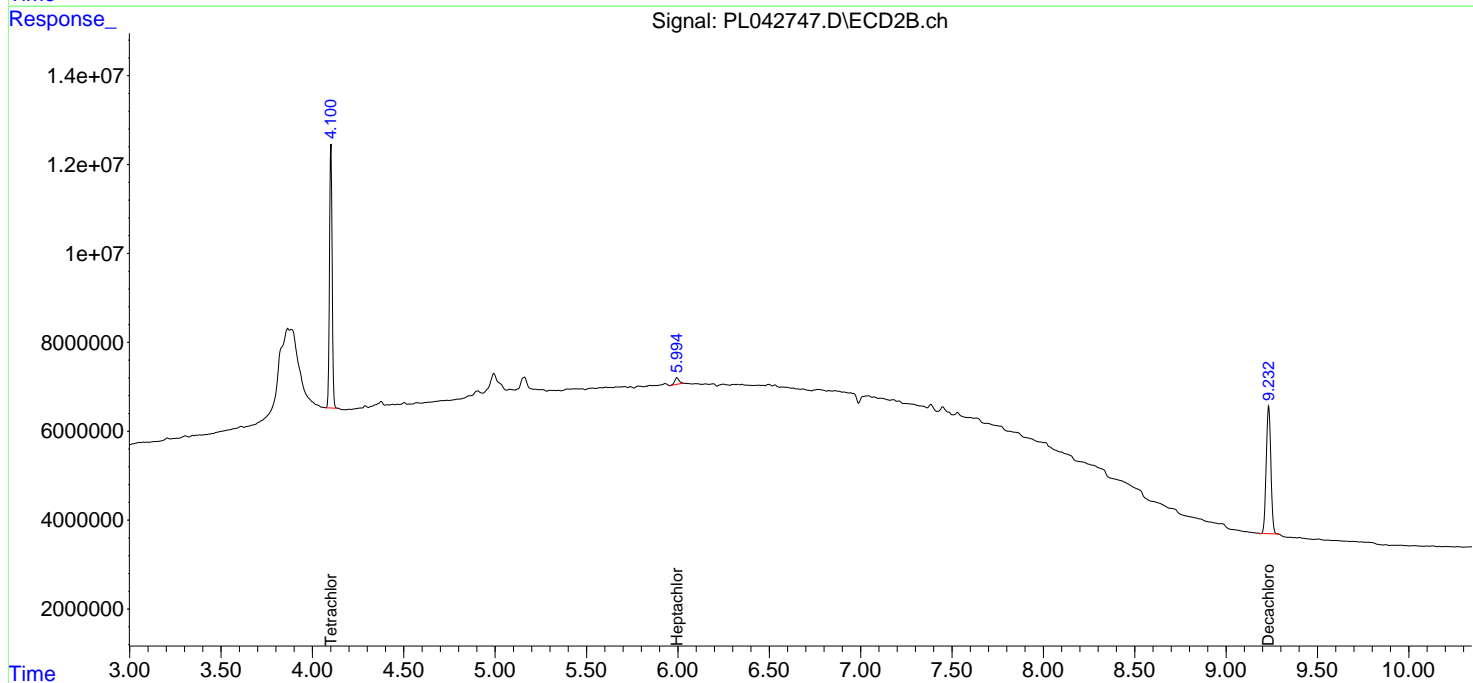
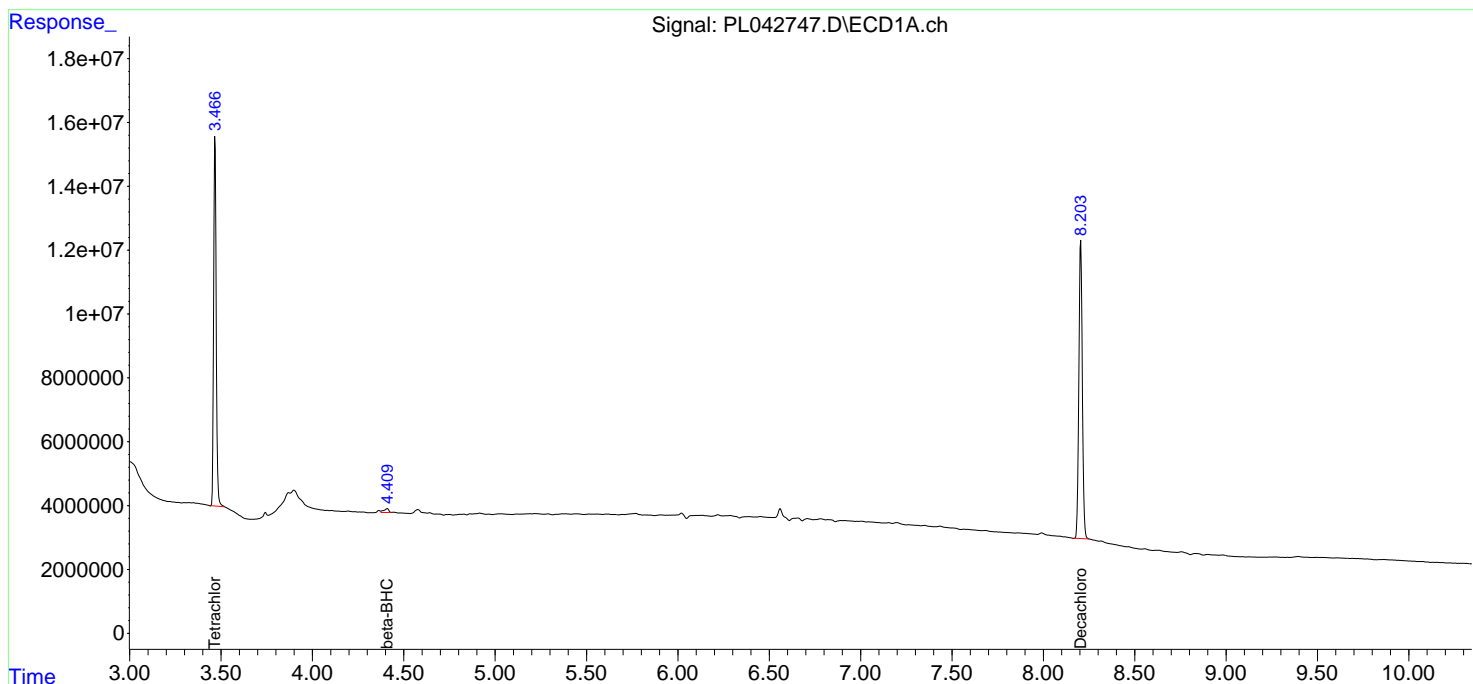
(f)=RT Delta > 1/2 Window (#)=Amounts differ by > 25% (m)=manual int.

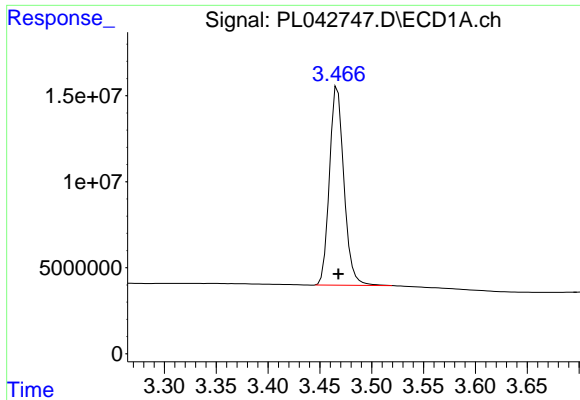
Data Path : Z:\pestpcbsrv\HPCHEM1\ECD_L\Data\PL120318\
 Data File : PL042747.D
 Signal(s) : Signal #1: ECD1A.ch Signal #2: ECD2B.ch
 Acq On : 04 Dec 2018 05:30
 Operator : AJ\SJ
 Sample : PB115278BL
 Misc :
 ALS Vial : 58 Sample Multiplier: 1

Instrument :
 ECD_L
 ClientSampleId :

Integration File signal 1: autoint1.e
 Integration File signal 2: autoint2.e
 Quant Time: Dec 04 05:50:41 2018
 Quant Method : Z:\pestpcbsrv\HPCHEM1\ECD_L\methods\PL112018.M
 Quant Title : GC Extractables
 QLast Update : Tue Nov 20 02:29:59 2018
 Response via : Initial Calibration
 Integrator: ChemStation

Volume Inj. : 2 µl
 Signal #1 Phase : ZB-MR1 Signal #2 Phase: ZB-MR2
 Signal #1 Info : 30M x 0.32mm x0.5 Signal #2 Info : 30M x 0.32mm x0.25µm

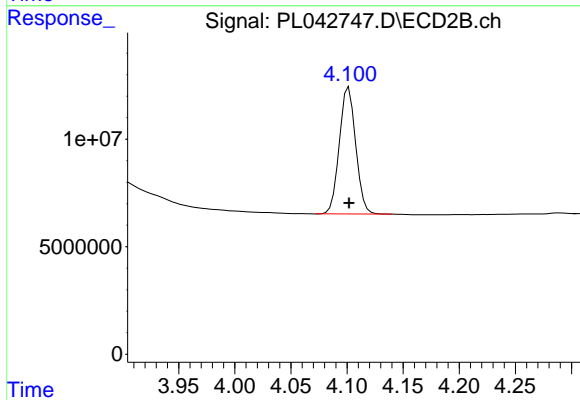




#1 Tetrachloro-m-xylene

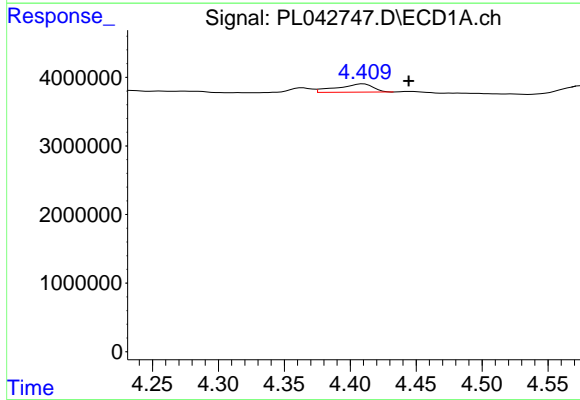
R.T.: 3.467 min
 Delta R.T.: 0.000 min
 Response: 112320730
 Conc: 19.09 ng/ml

Instrument :
 ECD_L
 ClientSampleId :



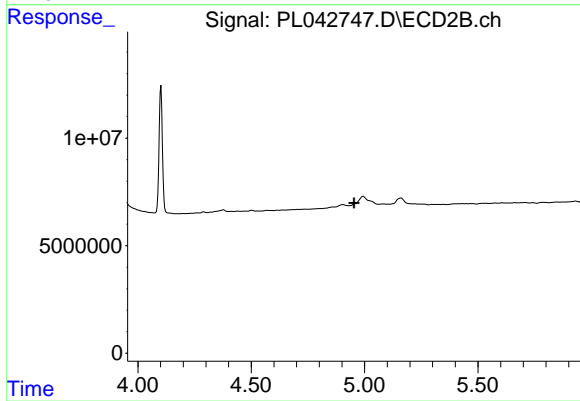
#1 Tetrachloro-m-xylene

R.T.: 4.102 min
 Delta R.T.: 0.000 min
 Response: 59865930
 Conc: 20.81 ng/ml



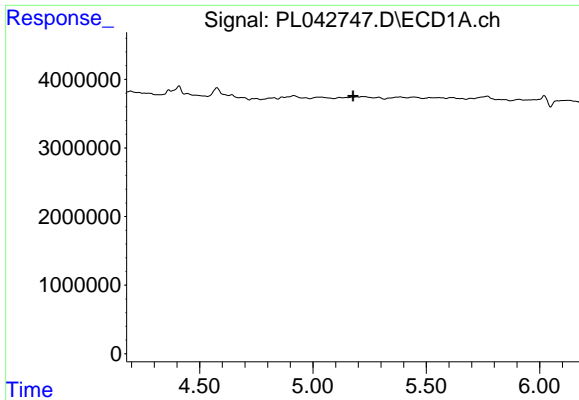
#6 beta-BHC

R.T.: 4.410 min
 Delta R.T.: -0.034 min
 Response: 2283445
 Conc: 0.64 ng/ml



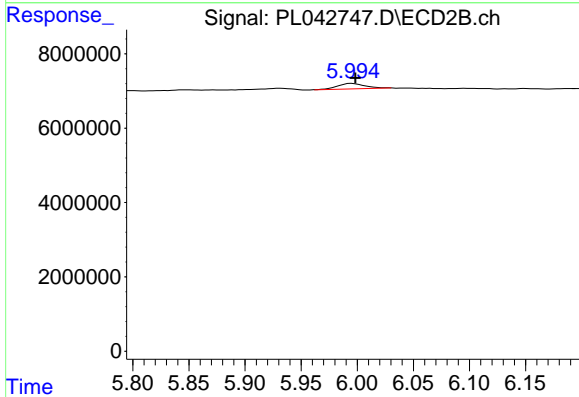
#6 beta-BHC

R.T.: 4.904 min
 Delta R.T.: -0.050 min
 Response: -139805
 Conc: N.D.

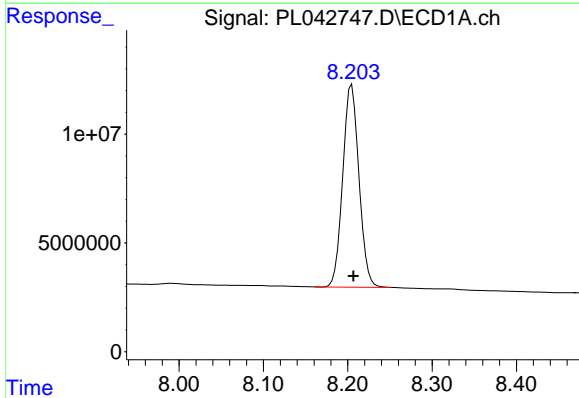


#8 Heptachlor epoxide
 R.T.: 0.000 min
 Exp R.T.: 5.177 min
 Response: 0
 Conc: N.D.

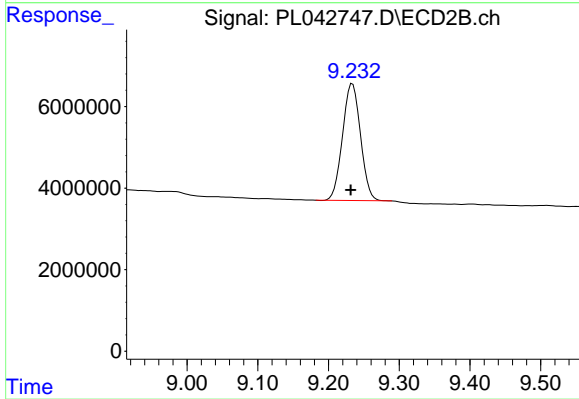
Instrument :
 ECD_L
 ClientSampleId :



#8 Heptachlor epoxide
 R.T.: 5.995 min
 Delta R.T.: -0.003 min
 Response: 2547328
 Conc: 0.71 ng/ml



#28 Decachlorobiphenyl
 R.T.: 8.205 min
 Delta R.T.: -0.002 min
 Response: 124285528
 Conc: 19.72 ng/ml



#28 Decachlorobiphenyl
 R.T.: 9.234 min
 Delta R.T.: 0.002 min
 Response: 50717131
 Conc: 21.03 ng/ml