

Data Path : Z:\pestpcbsrv\HPCHEM1\ECD_L\Data\PL120320\
 Data File : PL063333.D
 Signal(s) : Signal #1: ECD1A.ch Signal #2: ECD2B.ch
 Acq On : 03 Dec 2020 14:31
 Operator : DD\AJ
 Sample : L4932-01
 Misc :
 ALS Vial : 13 Sample Multiplier: 1

Instrument :
 ECD_L
 ClientSampleId :

Integration File signal 1: autoint1.e
 Integration File signal 2: autoint2.e
 Quant Time: Dec 04 05:20:41 2020
 Quant Method : Z:\pestpcbsrv\HPCHEM1\ECD_L\methods\PL112320.M
 Quant Title : GC Extractables
 QLast Update : Tue Nov 24 01:53:58 2020
 Response via : Initial Calibration
 Integrator: ChemStation

Volume Inj. : 1 µl
 Signal #1 Phase : ZB-MR2 Signal #2 Phase: ZB-MR1
 Signal #1 Info : 30M x 0.32mm x0.2 Signal #2 Info : 30M x 0.32mm x0.5µm

Compound	RT#1	RT#2	Resp#1	Resp#2	ng/ml	ng/ml
System Monitoring Compounds						
1) SA Tetrachlo...	3.410	3.950	37713968	66531631	22.145	20.385
28) SA Decachlor...	8.125	8.990	21889997	28257457	11.722	11.877
Target Compounds						
7) B delta-BHC	0.000	5.000	0	10963816	N.D.	2.880 #

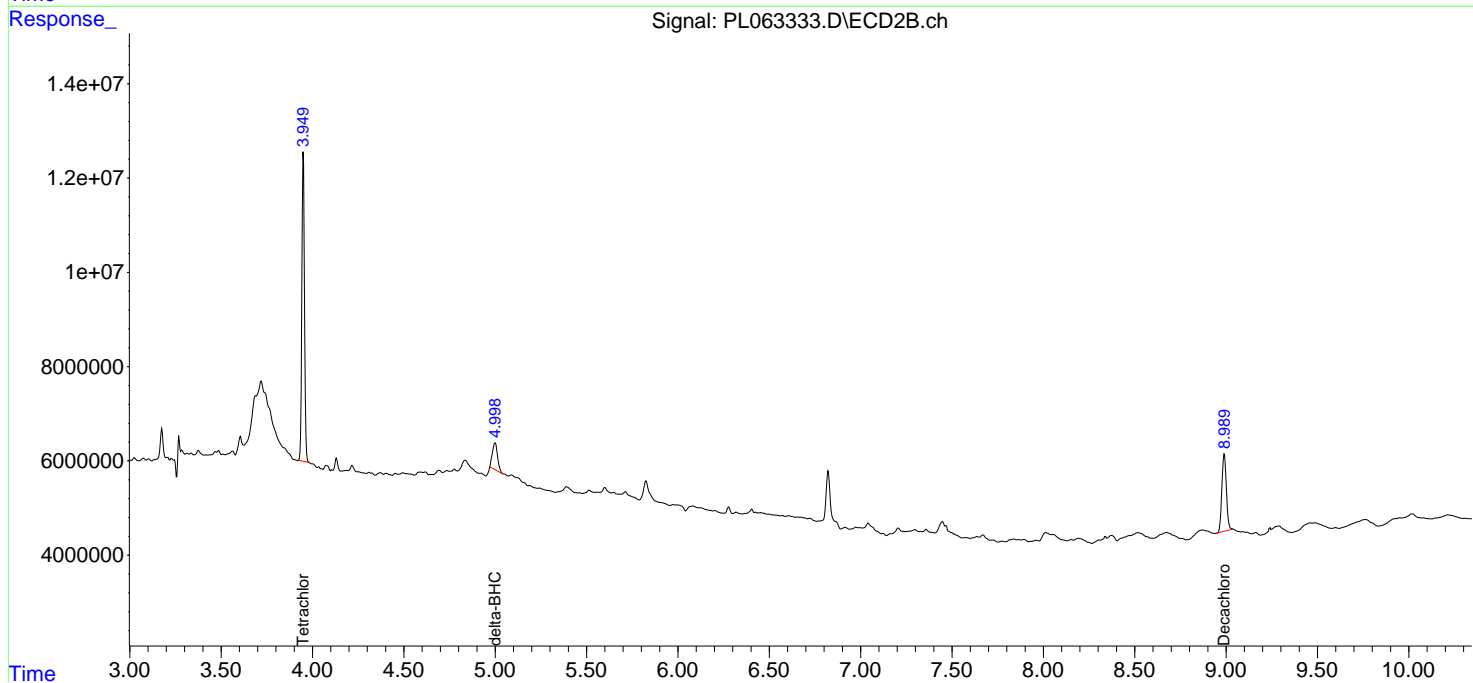
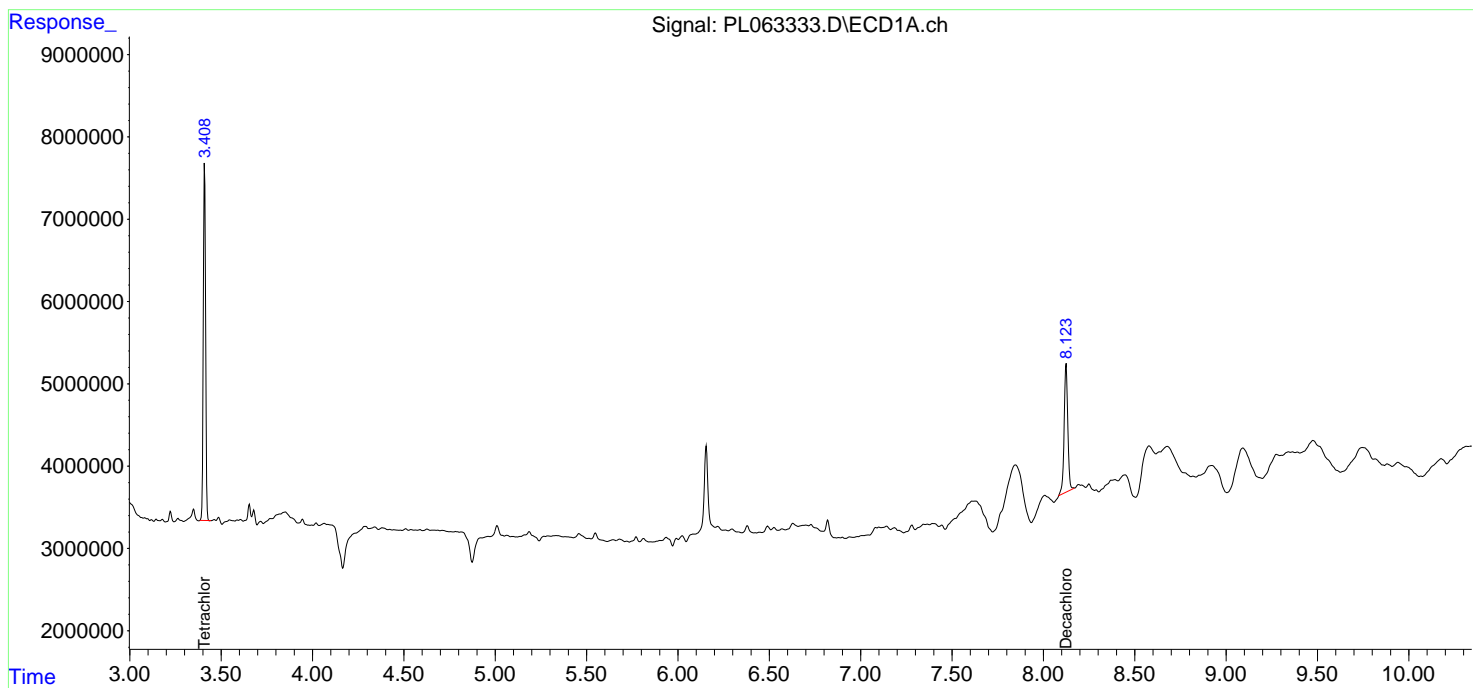
(f)=RT Delta > 1/2 Window (#)=Amounts differ by > 25% (m)=manual int.

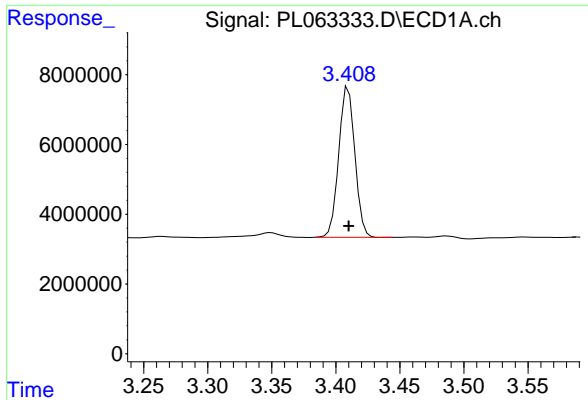
Data Path : Z:\pestpcbsrv\HPCHEM1\ECD_L\Data\PL120320\
 Data File : PL063333.D
 Signal(s) : Signal #1: ECD1A.ch Signal #2: ECD2B.ch
 Acq On : 03 Dec 2020 14:31
 Operator : DD\AJ
 Sample : L4932-01
 Misc :
 ALS Vial : 13 Sample Multiplier: 1

Instrument :
 ECD_L
 ClientSampleId :

Integration File signal 1: autoint1.e
 Integration File signal 2: autoint2.e
 Quant Time: Dec 04 05:20:41 2020
 Quant Method : Z:\pestpcbsrv\HPCHEM1\ECD_L\methods\PL112320.M
 Quant Title : GC Extractables
 QLast Update : Tue Nov 24 01:53:58 2020
 Response via : Initial Calibration
 Integrator: ChemStation

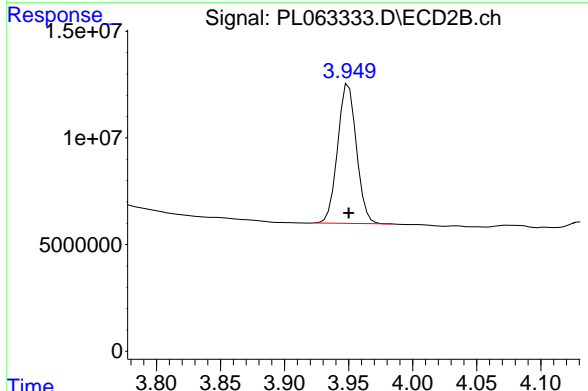
Volume Inj. : 1 µl
 Signal #1 Phase : ZB-MR2 Signal #2 Phase: ZB-MR1
 Signal #1 Info : 30M x 0.32mm x0.2 Signal #2 Info : 30M x 0.32mm x0.5µm



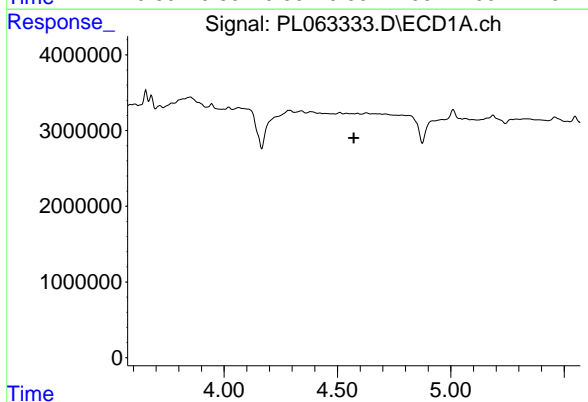


#1 Tetrachloro-m-xylene
 R.T.: 3.410 min
 Delta R.T.: 0.000 min
 Response: 37713968
 Conc: 22.14 ng/ml

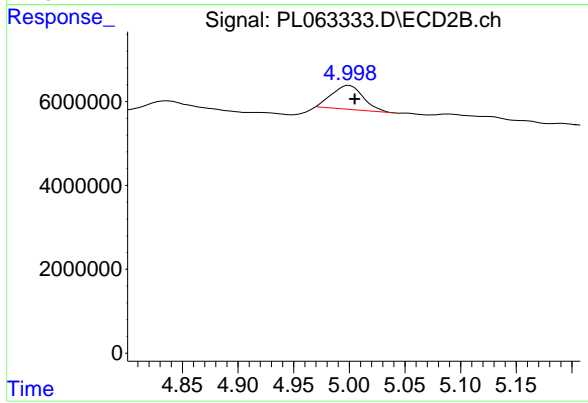
Instrument :
 ECD_L
 ClientSampled :



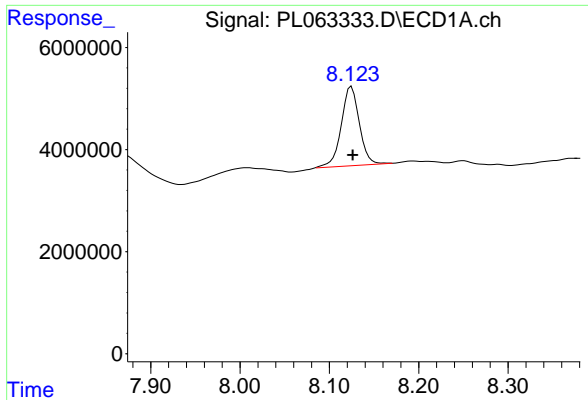
#1 Tetrachloro-m-xylene
 R.T.: 3.950 min
 Delta R.T.: 0.000 min
 Response: 66531631
 Conc: 20.38 ng/ml



#7 delta-BHC
 R.T.: 0.000 min
 Exp R.T. : 4.572 min
 Response: 0
 Conc: N.D.



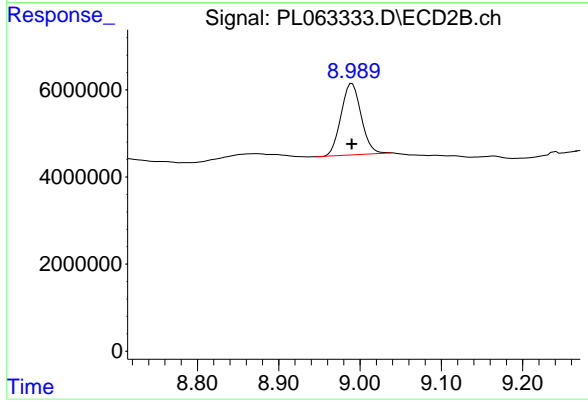
#7 delta-BHC
 R.T.: 5.000 min
 Delta R.T.: -0.005 min
 Response: 10963816
 Conc: 2.88 ng/ml



#28 Decachlorobiphenyl

R.T.: 8.125 min
Delta R.T.: -0.001 min
Response: 21889997
Conc: 11.72 ng/ml

Instrument :
ECD_L
ClientSampleId :



#28 Decachlorobiphenyl

R.T.: 8.990 min
Delta R.T.: 0.000 min
Response: 28257457
Conc: 11.88 ng/ml