

Data Path : Z:\pestpcbsrv\HPCHEM1\ECD_L\Data\PL120419\
 Data File : PL054747.D
 Signal(s) : Signal #1: ECD1A.ch Signal #2: ECD2B.ch
 Acq On : 03 Dec 2019 08:42
 Operator : SG\AJ
 Sample : HEXANE
 Misc :
 ALS Vial : 1 Sample Multiplier: 1

Instrument :
 ECD_L
 ClientSampleId :

Integration File signal 1: autoint1.e
 Integration File signal 2: autoint2.e
 Quant Time: Dec 05 00:11:50 2019
 Quant Method : Z:\pestpcbsrv\HPCHEM1\ECD_L\methods\PL112619.M
 Quant Title : GC Extractables
 QLast Update : Wed Nov 27 01:19:55 2019
 Response via : Initial Calibration
 Integrator: ChemStation

Volume Inj. : 1 µl
 Signal #1 Phase : ZB-MR1 Signal #2 Phase: ZB-MR1
 Signal #1 Info : 30M x 0.32mm x0.2 Signal #2 Info : 30M x 0.32mm x0.5µm

Compound	RT#1	RT#2	Resp#1	Resp#2	ng/ml	ng/ml
----------	------	------	--------	--------	-------	-------

System Monitoring Compounds

Target Compounds

2) A	alpha-BHC	4.000f	0.000	3257836	0	0.172	N.D.	#
5) MB	Aldrin	4.851f	0.000	1876043	0	0.115	N.D.	#
6) B	beta-BHC	4.493f	0.000	12180029	0	1.642	N.D.	#
7) B	delta-BHC	4.705f	0.000	439671	0	0.027	N.D.	#
8) B	Heptachlo...	5.274	0.000	30320694	0	2.005	N.D.	#
9) A	Endosulfan I	5.623	0.000	17151864	0	1.258	N.D.	#
10) B	gamma-Chl...	5.488	0.000	27453402	0	1.810	N.D.	#
11) B	alpha-Chl...	5.574f	0.000	25256500	0	1.713	N.D.	#
12) B	4,4'-DDE	5.702f	0.000	7295501	0	0.548	N.D.	#
24)	Chlordane-2	4.915	0.000	8020908	0	18.470	N.D.	#
25)	Chlordane-3	5.488	0.000	27453402	0	21.379	N.D.	#
26)	Chlordane-4	5.574f	0.000	25256500	0	23.911	N.D.	#

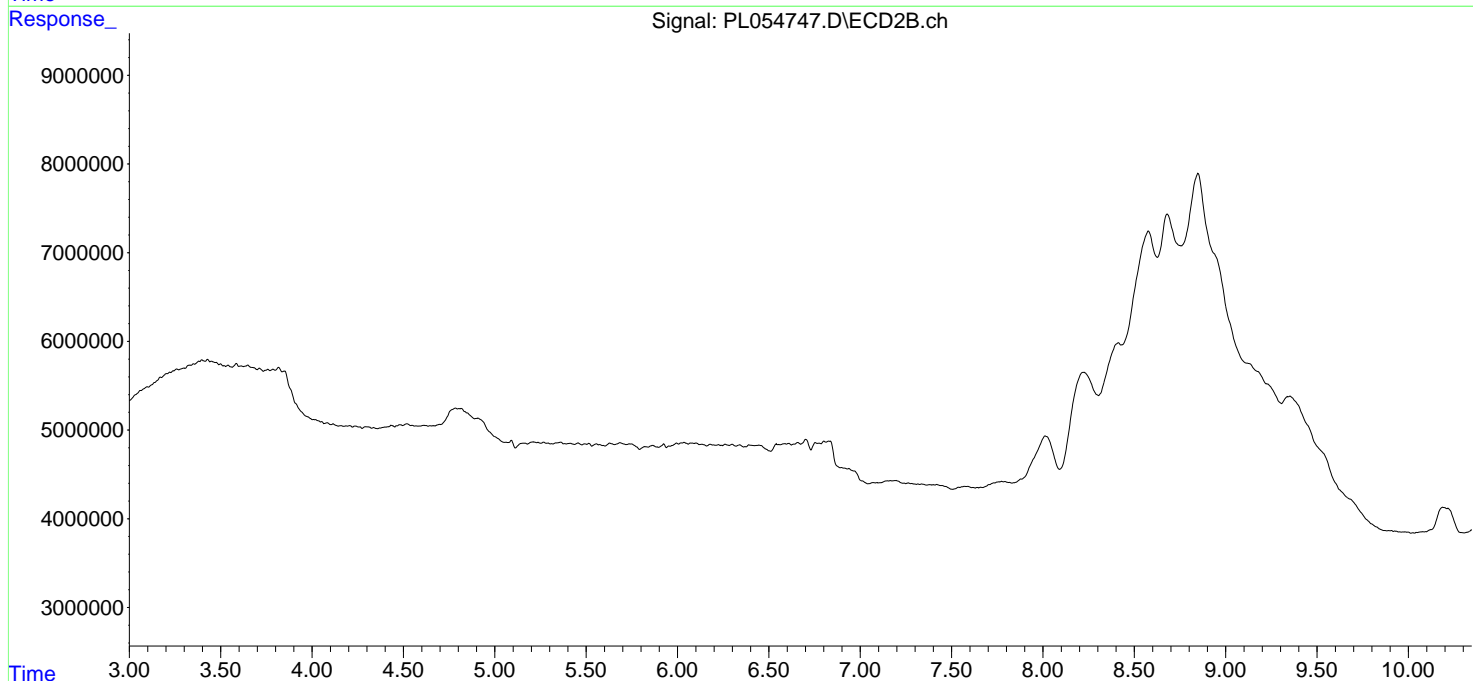
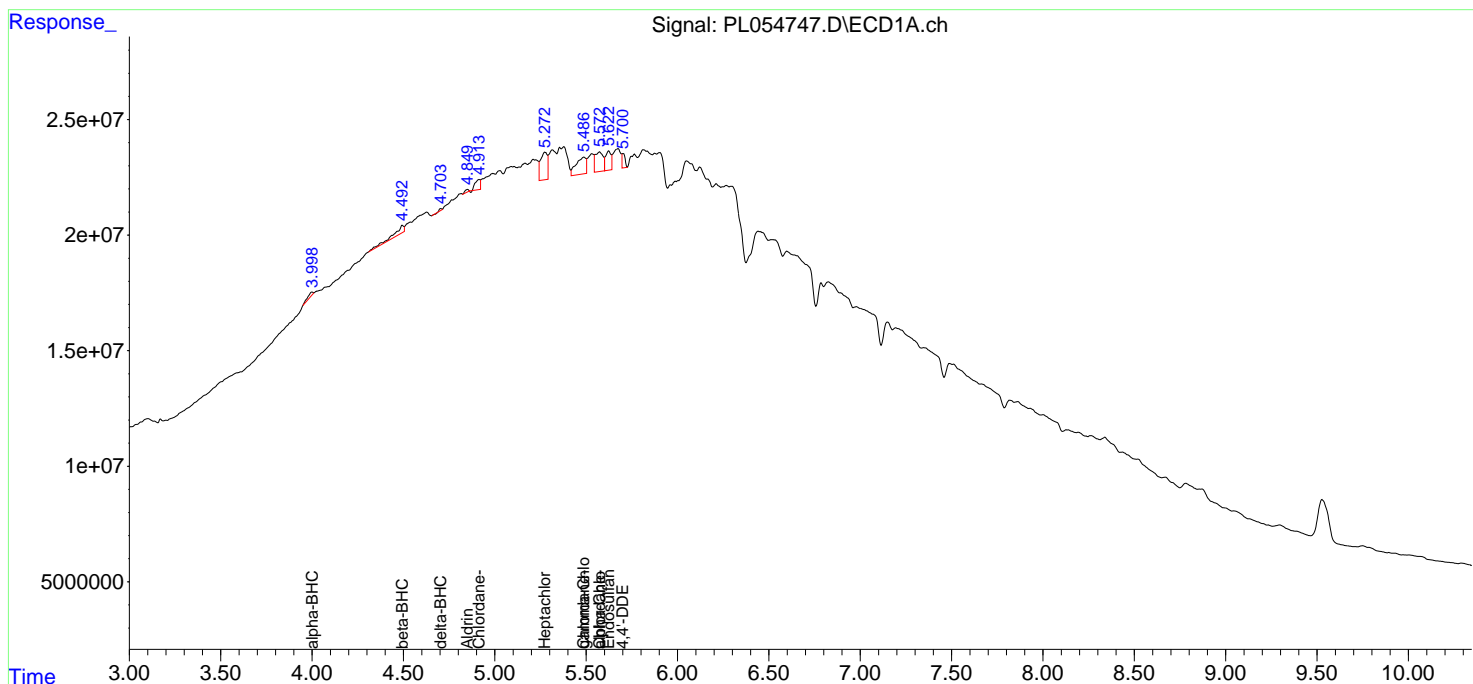
(f)=RT Delta > 1/2 Window (#)=Amounts differ by > 25% (m)=manual int.

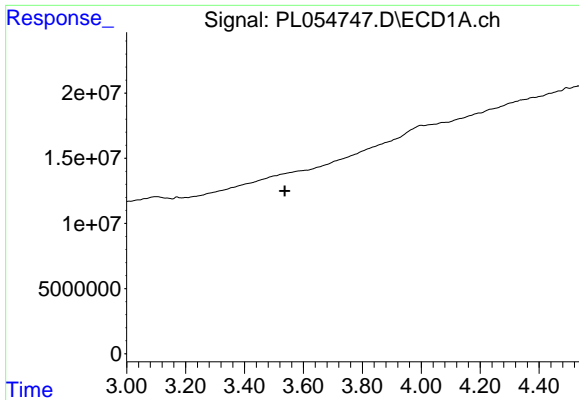
Data Path : Z:\pestpcbsrv\HPCHEM1\ECD_L\Data\PL120419\
 Data File : PL054747.D
 Signal(s) : Signal #1: ECD1A.ch Signal #2: ECD2B.ch
 Acq On : 03 Dec 2019 08:42
 Operator : SG\AJ
 Sample : HEXANE
 Misc :
 ALS Vial : 1 Sample Multiplier: 1

Instrument :
 ECD_L
 ClientSampleId :

Integration File signal 1: autoint1.e
 Integration File signal 2: autoint2.e
 Quant Time: Dec 05 00:11:50 2019
 Quant Method : Z:\pestpcbsrv\HPCHEM1\ECD_L\methods\PL112619.M
 Quant Title : GC Extractables
 QLast Update : Wed Nov 27 01:19:55 2019
 Response via : Initial Calibration
 Integrator: ChemStation

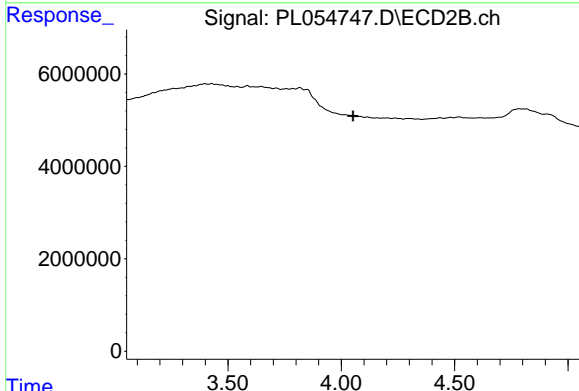
Volume Inj. : 1 µl
 Signal #1 Phase : ZB-MR2 Signal #2 Phase: ZB-MR1
 Signal #1 Info : 30M x 0.32mm x0.2 Signal #2 Info : 30M x 0.32mm x0.5µm



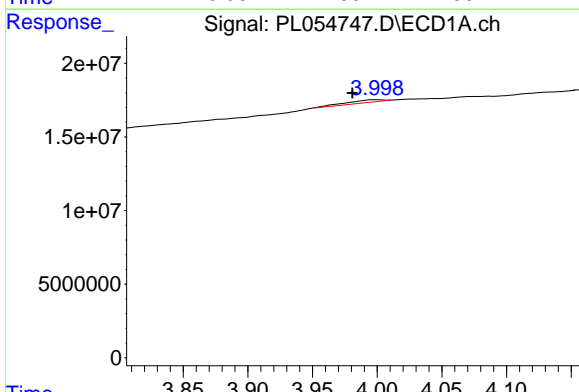


#1 Tetrachloro-m-xylene
 R.T.: 0.000 min
 Exp R.T. : 3.537 min
 Response: 0
 Conc: N.D.

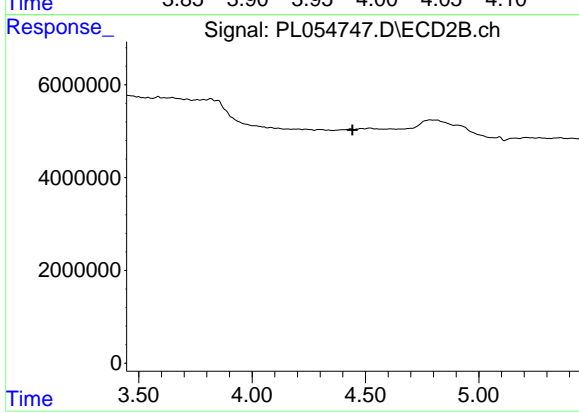
Instrument :
 ECD_L
 ClientSampled :



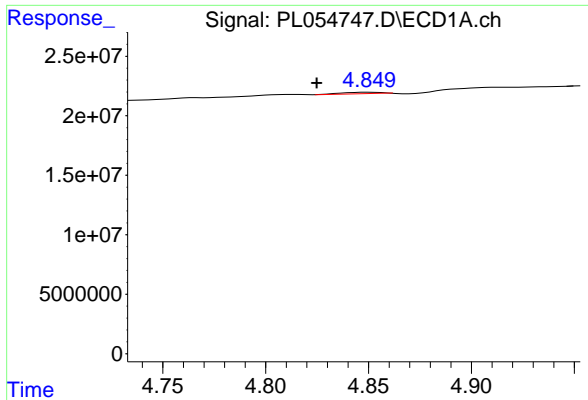
#1 Tetrachloro-m-xylene
 R.T.: 0.000 min
 Exp R.T. : 4.052 min
 Response: 0
 Conc: N.D.



#2 alpha-BHC
 R.T.: 4.000 min
 Delta R.T.: 0.019 min
 Response: 3257836
 Conc: 0.17 ng/ml

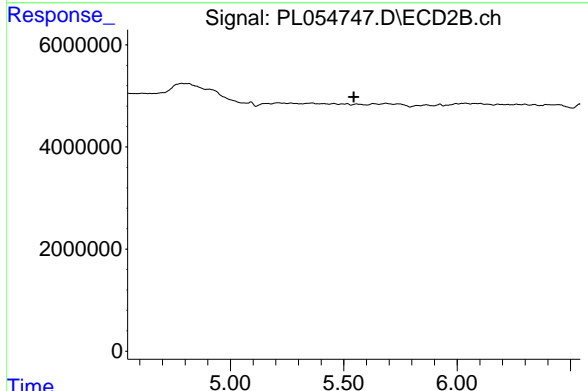


#2 alpha-BHC
 R.T.: 0.000 min
 Exp R.T. : 4.443 min
 Response: 0
 Conc: N.D.

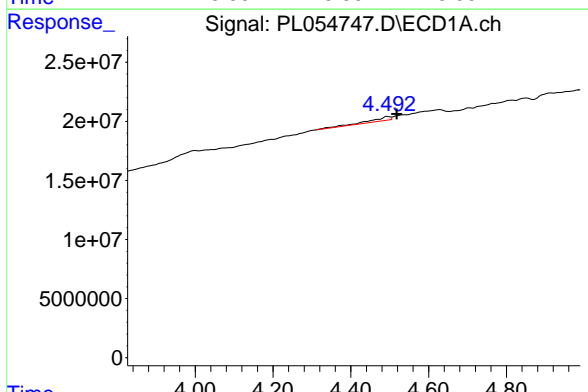


#5 Aldrin
 R.T.: 4.851 min
 Delta R.T.: 0.026 min
 Response: 1876043
 Conc: 0.12 ng/ml

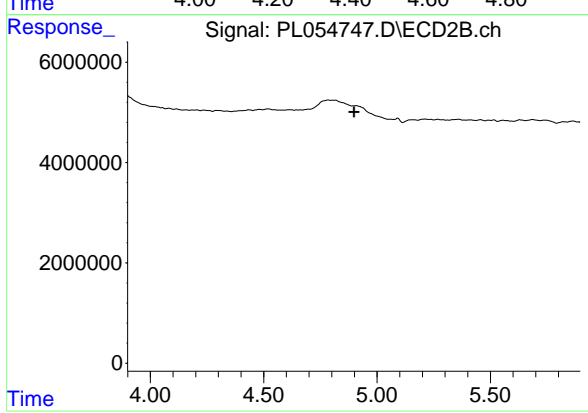
Instrument :
 ECD_L
 ClientSampleId :



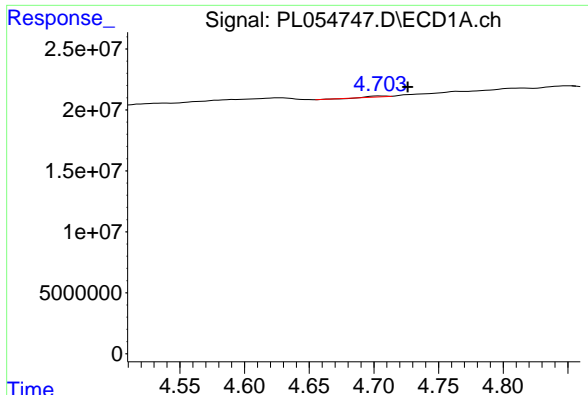
#5 Aldrin
 R.T.: 0.000 min
 Exp R.T. : 5.544 min
 Response: 0
 Conc: N.D.



#6 beta-BHC
 R.T.: 4.493 min
 Delta R.T.: -0.024 min
 Response: 12180029
 Conc: 1.64 ng/ml

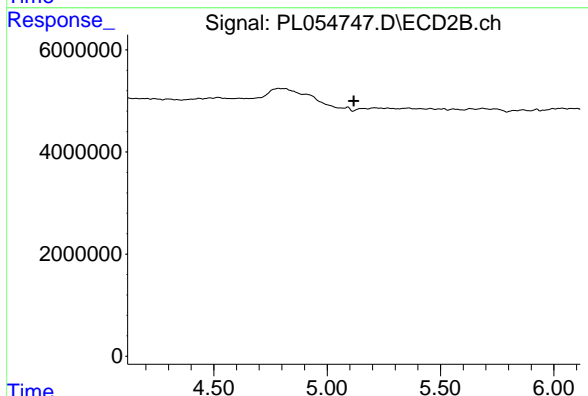


#6 beta-BHC
 R.T.: 0.000 min
 Exp R.T. : 4.899 min
 Response: 0
 Conc: N.D.

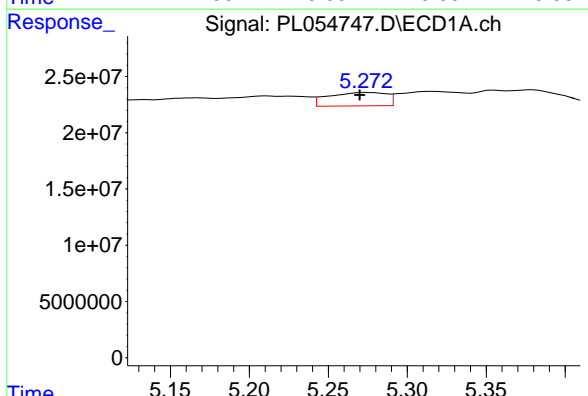


#7 delta-BHC
 R.T.: 4.705 min
 Delta R.T.: -0.022 min
 Response: 439671
 Conc: 0.03 ng/ml

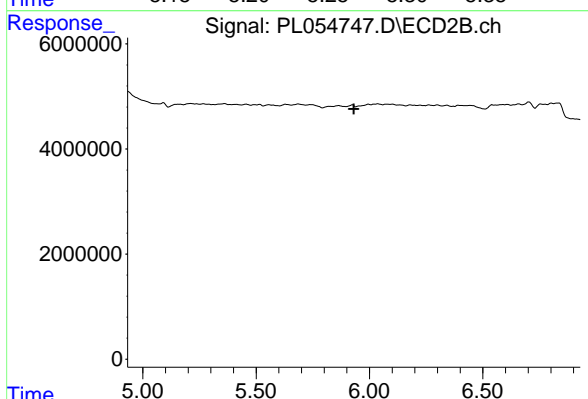
Instrument :
 ECD_L
 ClientSampleId :



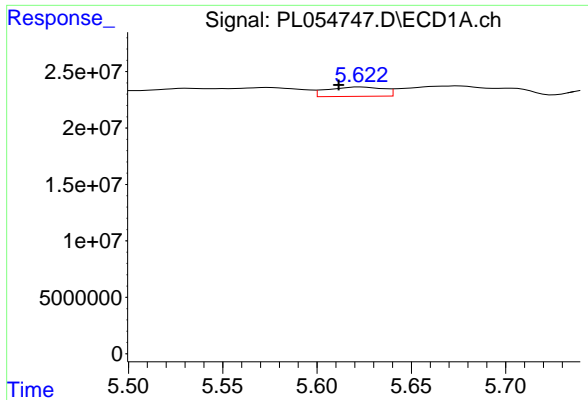
#7 delta-BHC
 R.T.: 0.000 min
 Exp R.T. : 5.117 min
 Response: 0
 Conc: N.D.



#8 Heptachlor epoxide
 R.T.: 5.274 min
 Delta R.T.: 0.004 min
 Response: 30320694
 Conc: 2.00 ng/ml

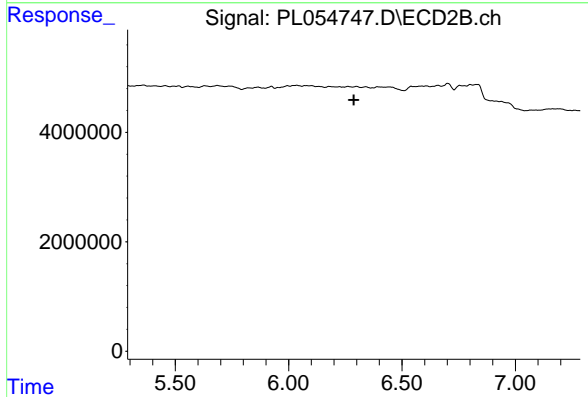


#8 Heptachlor epoxide
 R.T.: 0.000 min
 Exp R.T. : 5.930 min
 Response: 0
 Conc: N.D.

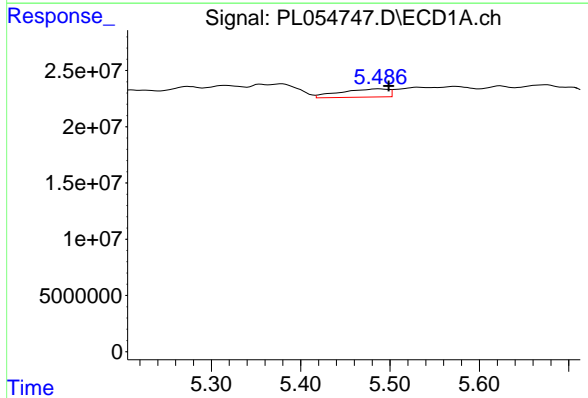


#9 Endosulfan I
 R.T.: 5.623 min
 Delta R.T.: 0.012 min
 Response: 17151864
 Conc: 1.26 ng/ml

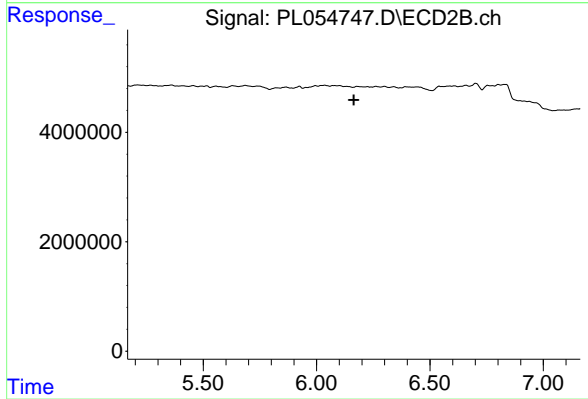
Instrument :
 ECD_L
 ClientSampleId :



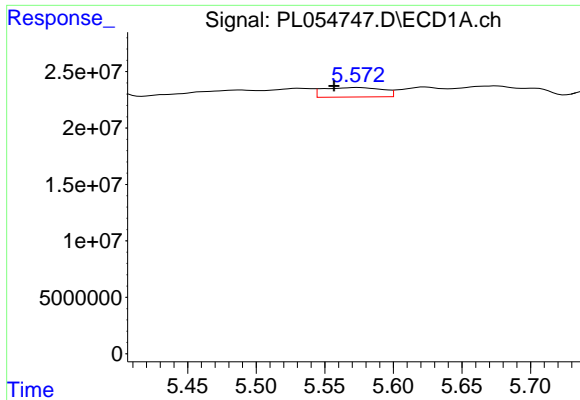
#9 Endosulfan I
 R.T.: 0.000 min
 Exp R.T. : 6.288 min
 Response: 0
 Conc: N.D.



#10 gamma-Chlordane
 R.T.: 5.488 min
 Delta R.T.: -0.010 min
 Response: 27453402
 Conc: 1.81 ng/ml

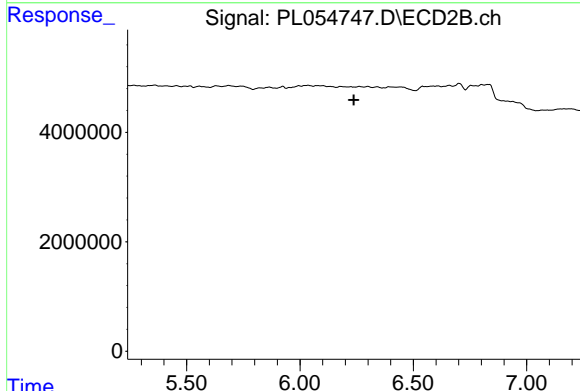


#10 gamma-Chlordane
 R.T.: 0.000 min
 Exp R.T. : 6.164 min
 Response: 0
 Conc: N.D.

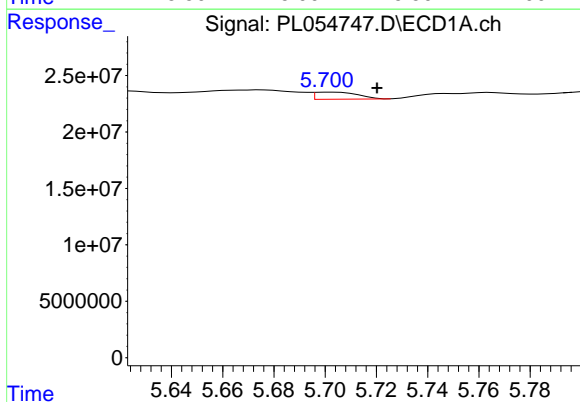


#11 alpha-Chlordane
 R.T.: 5.574 min
 Delta R.T.: 0.017 min
 Response: 25256500
 Conc: 1.71 ng/ml

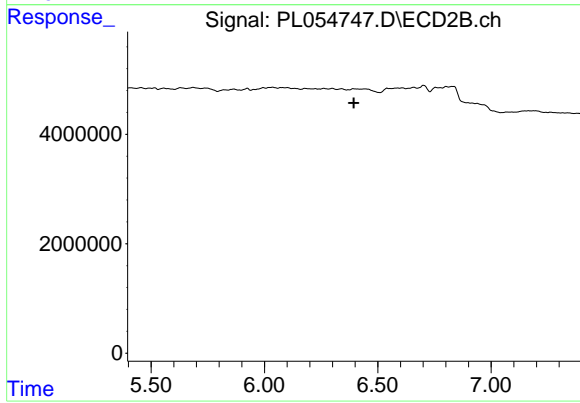
Instrument :
 ECD_L
 ClientSampled :



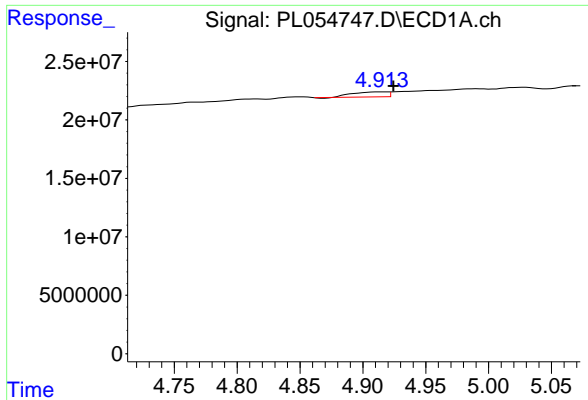
#11 alpha-Chlordane
 R.T.: 0.000 min
 Exp R.T. : 6.237 min
 Response: 0
 Conc: N.D.



#12 4,4'-DDE
 R.T.: 5.702 min
 Delta R.T.: -0.018 min
 Response: 7295501
 Conc: 0.55 ng/ml

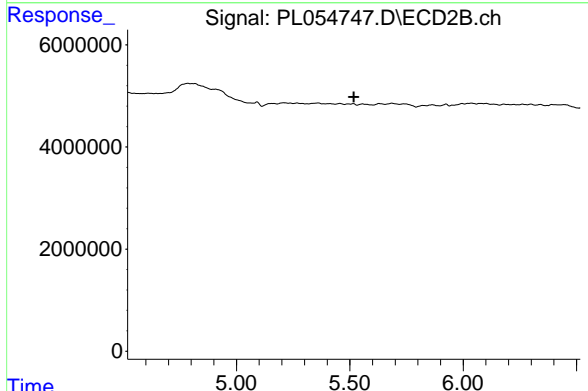


#12 4,4'-DDE
 R.T.: 0.000 min
 Exp R.T. : 6.394 min
 Response: 0
 Conc: N.D.

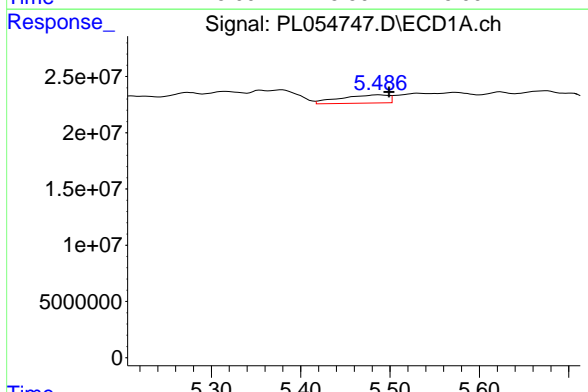


#24 Chlordane-2
 R.T.: 4.915 min
 Delta R.T.: -0.010 min
 Response: 8020908
 Conc: 18.47 ng/ml

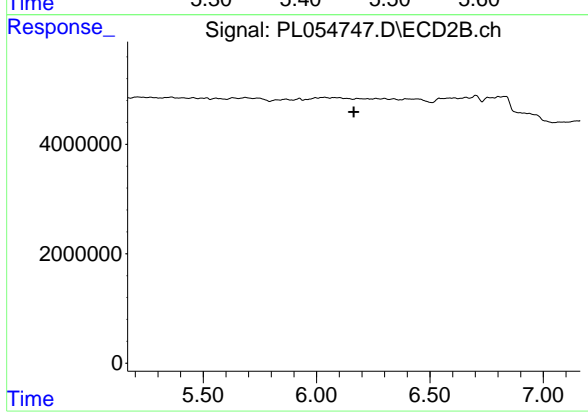
Instrument :
 ECD_L
 ClientSampled :



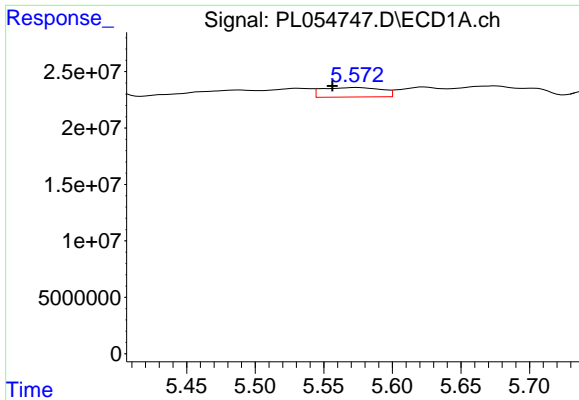
#24 Chlordane-2
 R.T.: 0.000 min
 Exp R.T. : 5.517 min
 Response: 0
 Conc: N.D.



#25 Chlordane-3
 R.T.: 5.488 min
 Delta R.T.: -0.011 min
 Response: 27453402
 Conc: 21.38 ng/ml



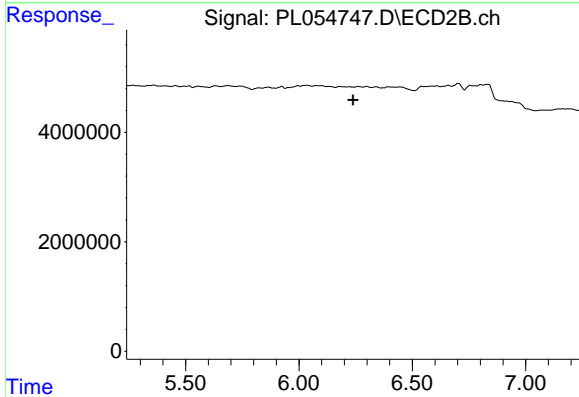
#25 Chlordane-3
 R.T.: 0.000 min
 Exp R.T. : 6.164 min
 Response: 0
 Conc: N.D.



#26 Chlordane-4

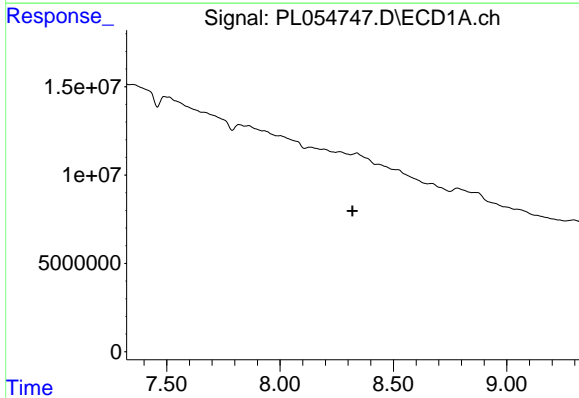
R.T.: 5.574 min
 Delta R.T.: 0.017 min
 Response: 25256500
 Conc: 23.91 ng/ml

Instrument :
 ECD_L
 ClientSampleId :



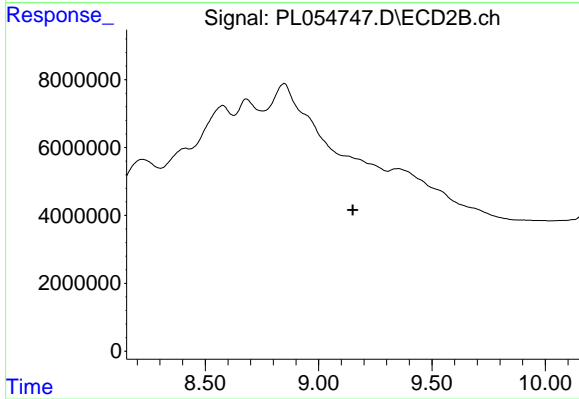
#26 Chlordane-4

R.T.: 0.000 min
 Exp R.T. : 6.239 min
 Response: 0
 Conc: N.D.



#28 Decachlorobiphenyl

R.T.: 0.000 min
 Exp R.T. : 8.320 min
 Response: 0
 Conc: N.D.



#28 Decachlorobiphenyl

R.T.: 0.000 min
 Exp R.T. : 9.152 min
 Response: 0
 Conc: N.D.