

Data Path : Z:\pestpcbsrv\HPCHEM1\ECD_L\Data\PL120419\
 Data File : PL054754.D
 Signal(s) : Signal #1: ECD1A.ch Signal #2: ECD2B.ch
 Acq On : 04 Dec 2019 15:39
 Operator : SG\AJ
 Sample : K6100-03
 Misc :
 ALS Vial : 8 Sample Multiplier: 1

Instrument :
 ECD_L
 ClientSampleId :

Integration File signal 1: autoint1.e
 Integration File signal 2: autoint2.e
 Quant Time: Dec 05 00:13:18 2019
 Quant Method : Z:\pestpcbsrv\HPCHEM1\ECD_L\methods\PL112619.M
 Quant Title : GC Extractables
 QLast Update : Wed Nov 27 01:19:55 2019
 Response via : Initial Calibration
 Integrator: ChemStation

Volume Inj. : 1 µl
 Signal #1 Phase : ZB-MR2 Signal #2 Phase: ZB-MR1
 Signal #1 Info : 30M x 0.32mm x0.2 Signal #2 Info : 30M x 0.32mm x0.5µm

	Compound	RT#1	RT#2	Resp#1	Resp#2	ng/ml	ng/ml

System Monitoring Compounds							
1)	SA Tetrachlo...	3.538	4.051	265.6E6	64499243	22.827	25.276
28)	SA Decachlor...	8.323	9.155	186.6E6	52998102	19.489	22.106
Target Compounds							
2)	A alpha-BHC	3.977	0.000	9663881	0	0.509	N.D. #
4)	MA Heptachlor	4.579	0.000	19970017	0	1.133	N.D. #
5)	MB Aldrin	4.811	5.547	15435187	388253	0.947	0.139 #
6)	B beta-BHC	4.531	0.000	11641309	0	1.570	N.D. #
7)	B delta-BHC	4.726	5.088f	3220309	3490761	0.198	1.309 #
8)	B Heptachlo...	5.280	0.000	33838541	0	2.237	N.D. #
10)	B gamma-Chl...	5.503	0.000	111.5E6	0	7.356	N.D. #
11)	B alpha-Chl...	5.561	0.000	183.9E6	0	12.473	N.D. #
15)	B Endosulfa...	6.417f	6.982	16456877	5281354	1.360	2.246 #
17)	MA 4,4'-DDT	6.475	7.161f	20870204	337095	1.992	0.170 #
18)	B Endrin al...	0.000	7.100	0	6651401	N.D.	3.393 #
21)	B Endrin ke...	0.000	7.788	0	4634256	N.D.	2.059 #
22)	Mirex	7.434f	0.000	7219394	0	0.889	N.D. #
23)	Chlordane-1	4.443f	0.000	18104684	0	45.877	N.D. #
24)	Chlordane-2	4.952f	5.501f	28021326	3101900	64.527	34.610 #
25)	Chlordane-3	5.503	0.000	111.5E6	0	86.861	N.D. #
26)	Chlordane-4	5.561	0.000	183.9E6	0	174.124	N.D. #
27)	Chlordane-5	6.417f	0.000	16456877	0	43.710	N.D. #

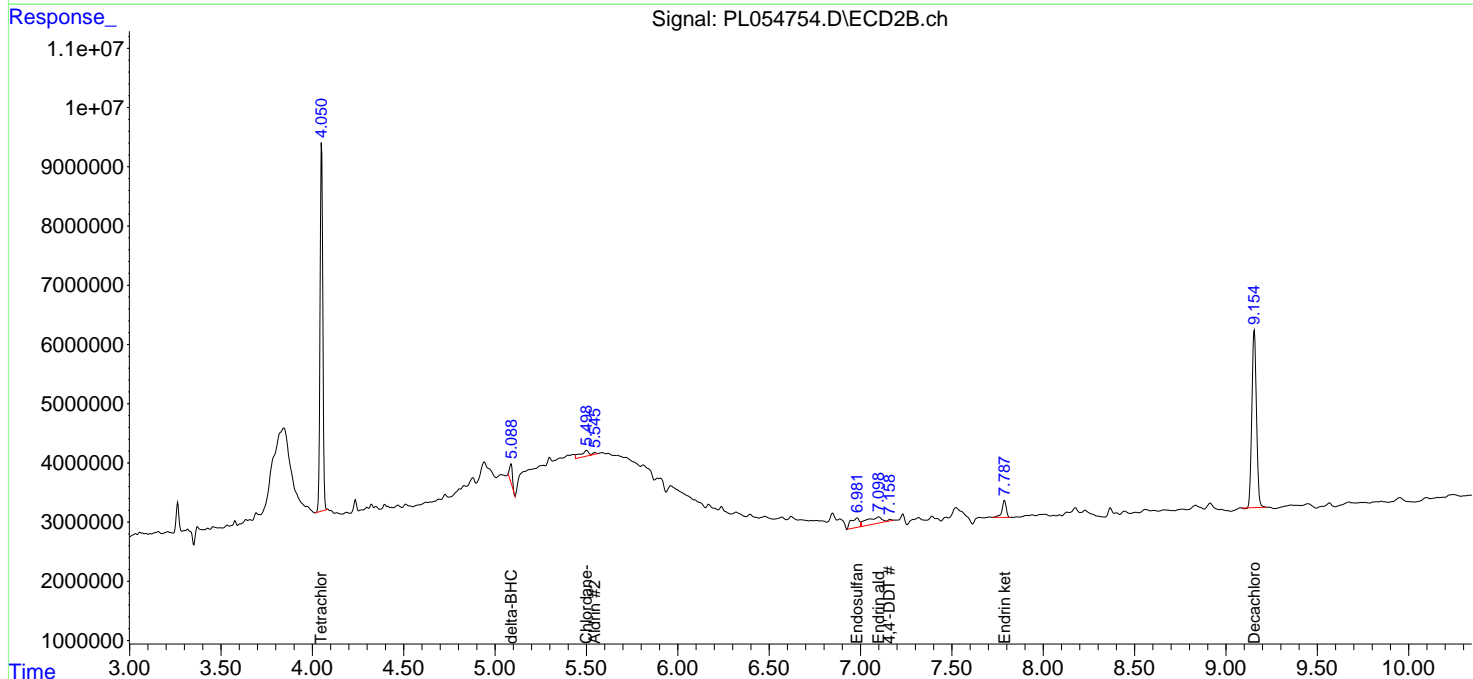
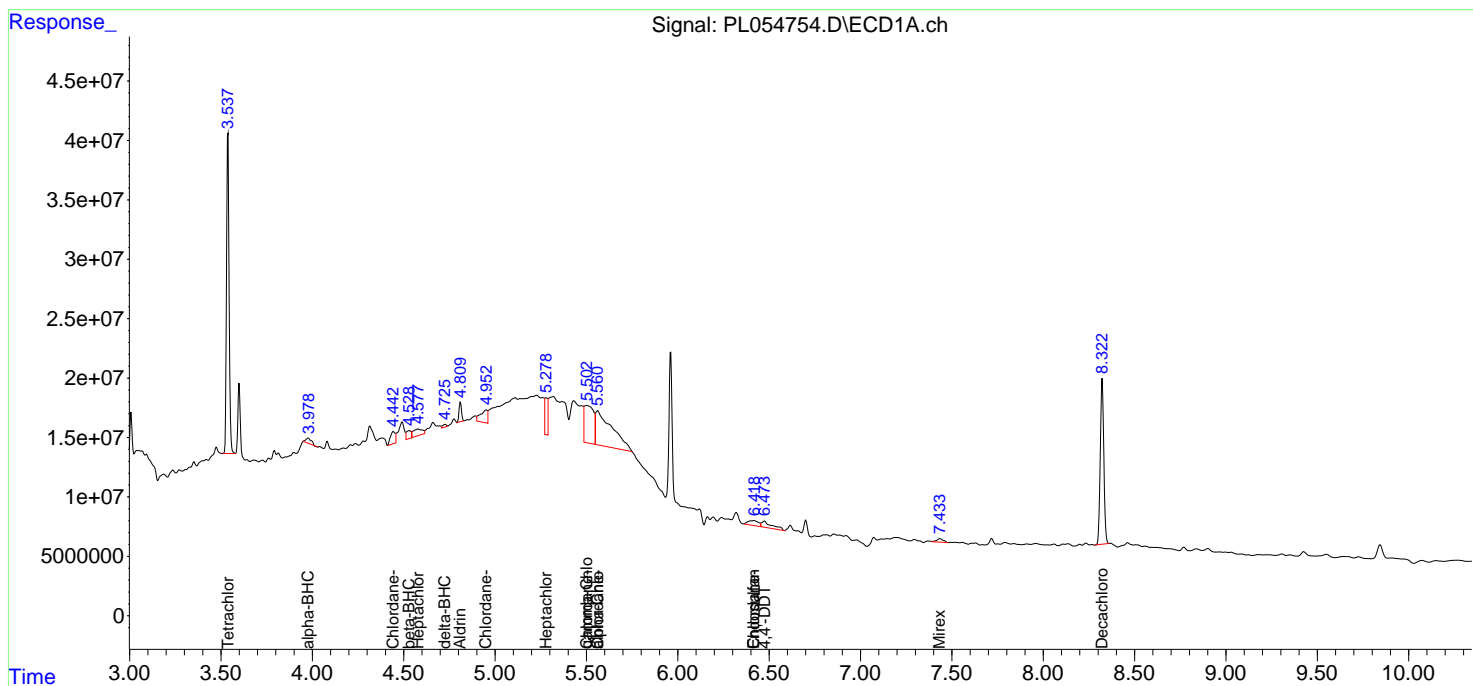
(f)=RT Delta > 1/2 Window (#)=Amounts differ by > 25% (m)=manual int.

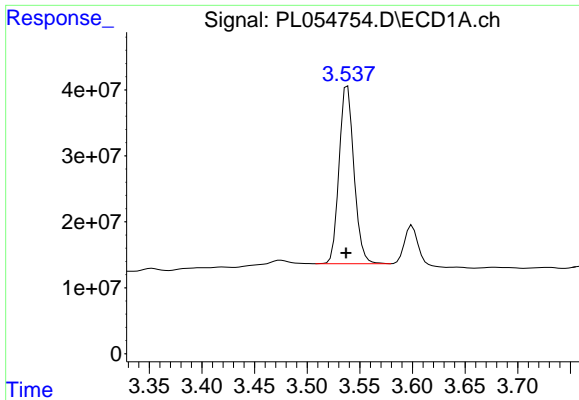
Data Path : Z:\pestpcbsrv\HPCHEM1\ECD_L\Data\PL120419\
 Data File : PL054754.D
 Signal(s) : Signal #1: ECD1A.ch Signal #2: ECD2B.ch
 Acq On : 04 Dec 2019 15:39
 Operator : SG\AJ
 Sample : K6100-03
 Misc :
 ALS Vial : 8 Sample Multiplier: 1

Instrument :
 ECD_L
 ClientSampled :

Integration File signal 1: autoint1.e
 Integration File signal 2: autoint2.e
 Quant Time: Dec 05 00:13:18 2019
 Quant Method : Z:\pestpcbsrv\HPCHEM1\ECD_L\methods\PL112619.M
 Quant Title : GC Extractables
 QLast Update : Wed Nov 27 01:19:55 2019
 Response via : Initial Calibration
 Integrator: ChemStation

Volume Inj. : 1 µl
 Signal #1 Phase : ZB-MR2 Signal #2 Phase: ZB-MR1
 Signal #1 Info : 30M x 0.32mm x0.2 Signal #2 Info : 30M x 0.32mm x0.5µm

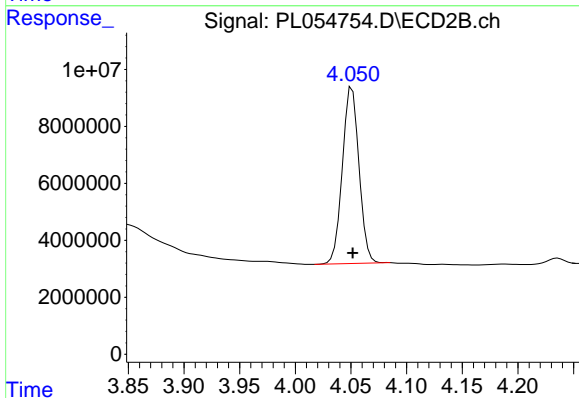




#1 Tetrachloro-m-xylene

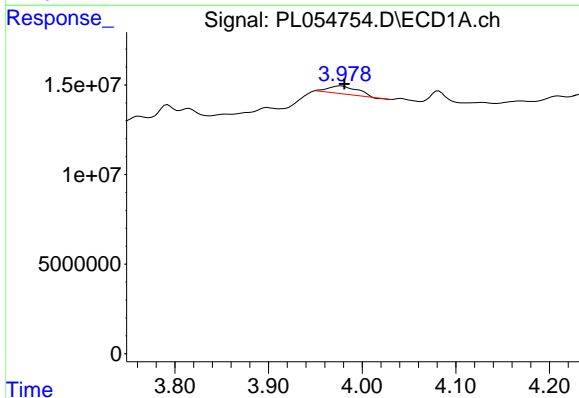
R.T.: 3.538 min
 Delta R.T.: 0.001 min
 Response: 26575269
 Conc: 22.83 ng/ml

Instrument :
 ECD_L
 ClientSampled :



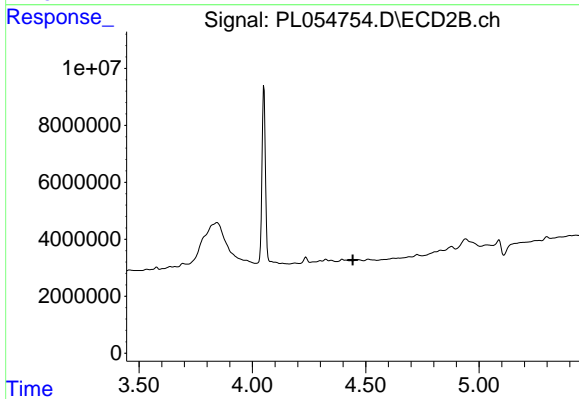
#1 Tetrachloro-m-xylene

R.T.: 4.051 min
 Delta R.T.: 0.000 min
 Response: 64499243
 Conc: 25.28 ng/ml



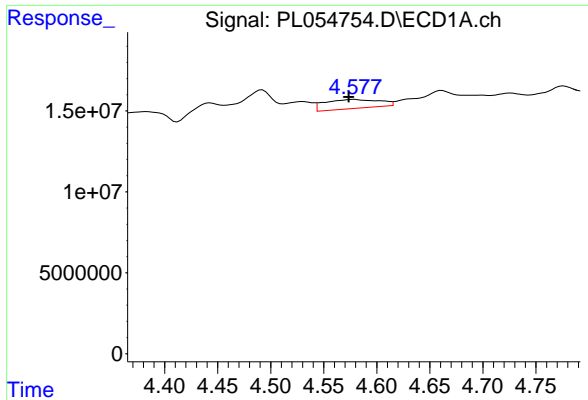
#2 alpha-BHC

R.T.: 3.977 min
 Delta R.T.: -0.004 min
 Response: 9663881
 Conc: 0.51 ng/ml



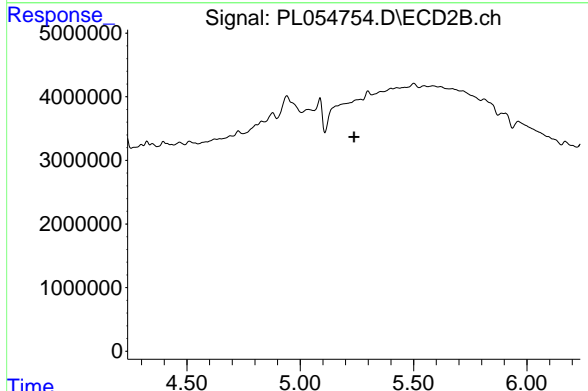
#2 alpha-BHC

R.T.: 0.000 min
 Exp R.T. : 4.443 min
 Response: 0
 Conc: N.D.

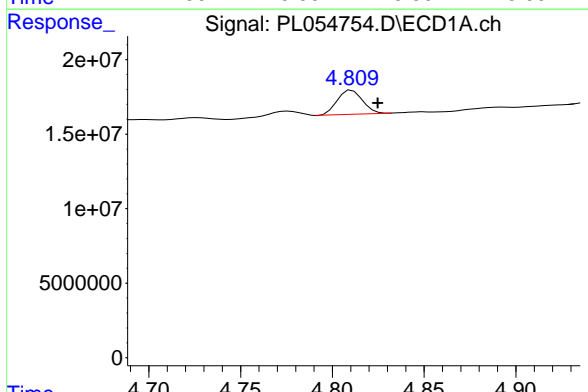


#4 Heptachlor
 R.T.: 4.579 min
 Delta R.T.: 0.005 min
 Response: 19970017
 Conc: 1.13 ng/ml

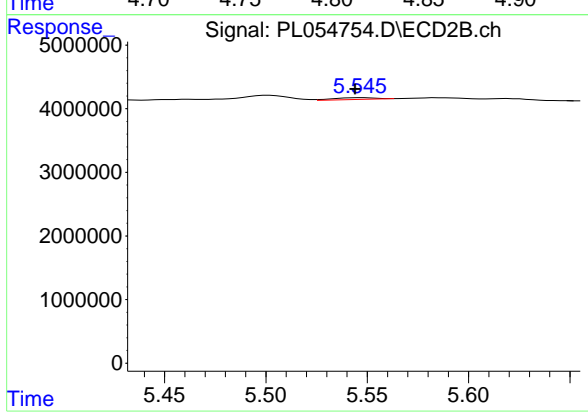
Instrument :
 ECD_L
 ClientSampled :



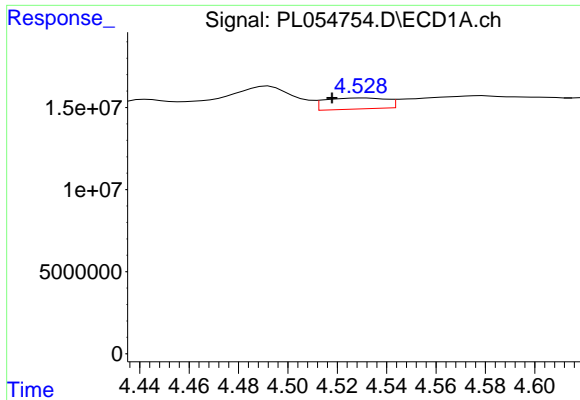
#4 Heptachlor
 R.T.: 0.000 min
 Exp R.T. : 5.238 min
 Response: 0
 Conc: N.D.



#5 Aldrin
 R.T.: 4.811 min
 Delta R.T.: -0.014 min
 Response: 15435187
 Conc: 0.95 ng/ml

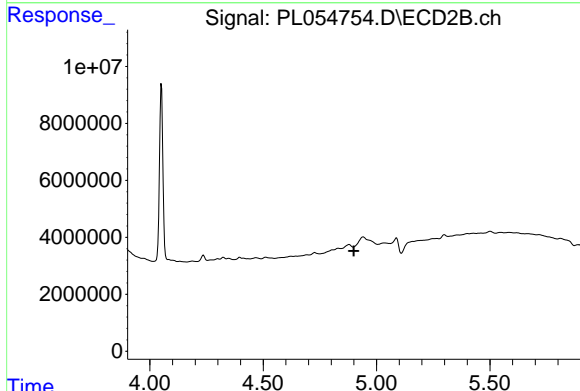


#5 Aldrin
 R.T.: 5.547 min
 Delta R.T.: 0.003 min
 Response: 388253
 Conc: 0.14 ng/ml

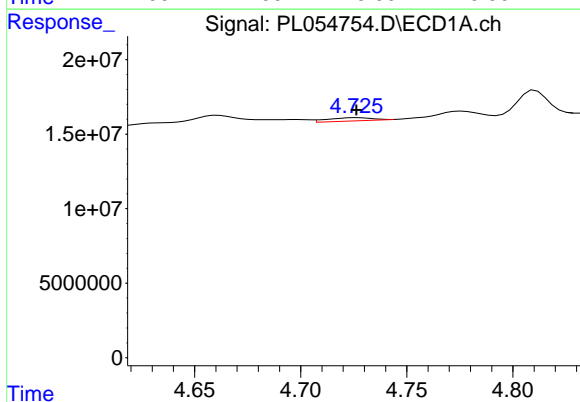


#6 beta-BHC
 R.T.: 4.531 min
 Delta R.T.: 0.013 min
 Response: 11641309
 Conc: 1.57 ng/ml

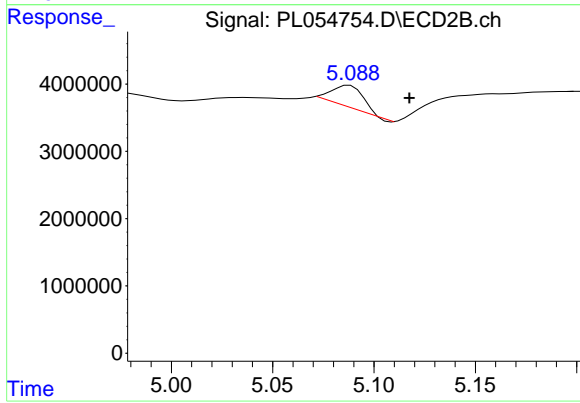
Instrument :
 ECD_L
 ClientSampleId :



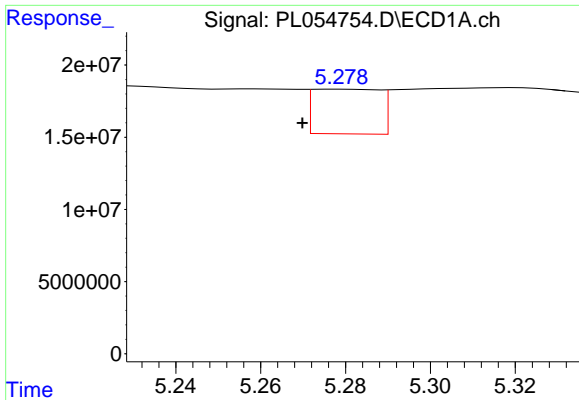
#6 beta-BHC
 R.T.: 0.000 min
 Exp R.T. : 4.899 min
 Response: 0
 Conc: N.D.



#7 delta-BHC
 R.T.: 4.726 min
 Delta R.T.: 0.000 min
 Response: 3220309
 Conc: 0.20 ng/ml

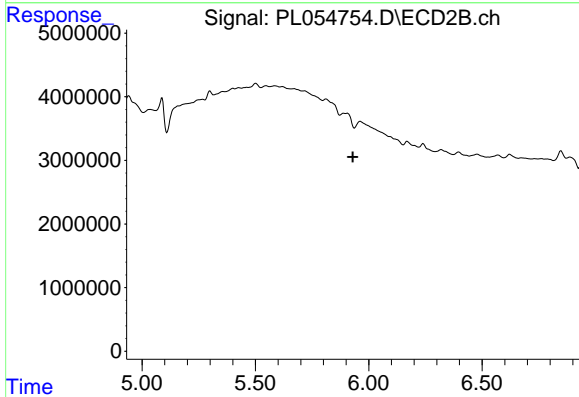


#7 delta-BHC
 R.T.: 5.088 min
 Delta R.T.: -0.030 min
 Response: 3490761
 Conc: 1.31 ng/ml

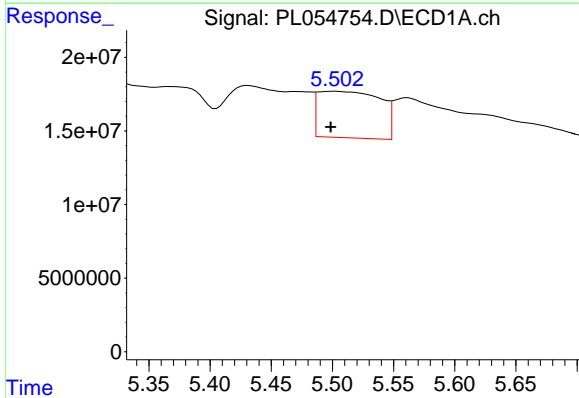


#8 Heptachlor epoxide
 R.T.: 5.280 min
 Delta R.T.: 0.010 min
 Response: 33838541
 Conc: 2.24 ng/ml

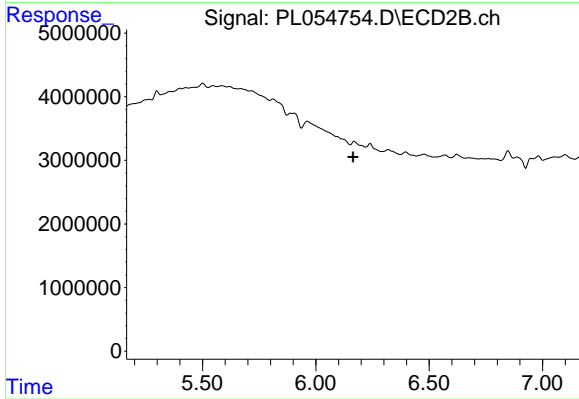
Instrument :
 ECD_L
 ClientSampleId :



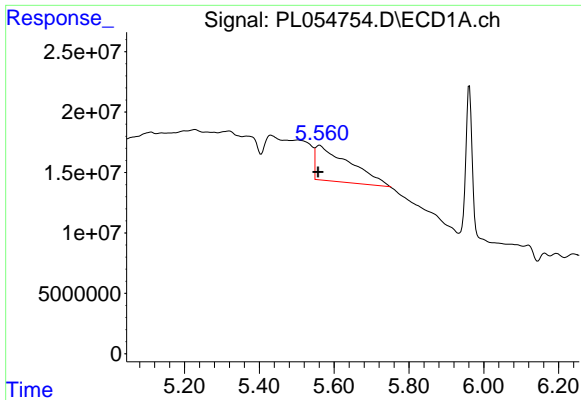
#8 Heptachlor epoxide
 R.T.: 0.000 min
 Exp R.T. : 5.930 min
 Response: 0
 Conc: N.D.



#10 gamma-Chlordane
 R.T.: 5.503 min
 Delta R.T.: 0.004 min
 Response: 111541260
 Conc: 7.36 ng/ml

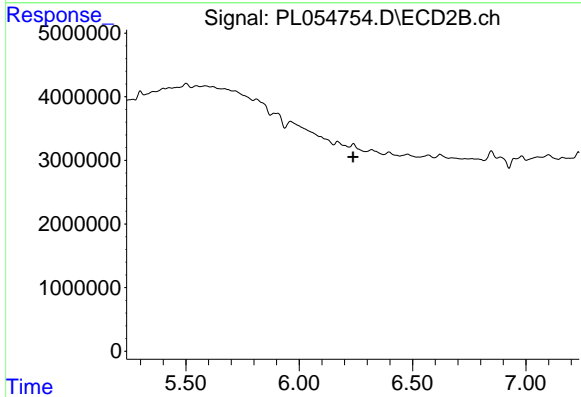


#10 gamma-Chlordane
 R.T.: 0.000 min
 Exp R.T. : 6.164 min
 Response: 0
 Conc: N.D.

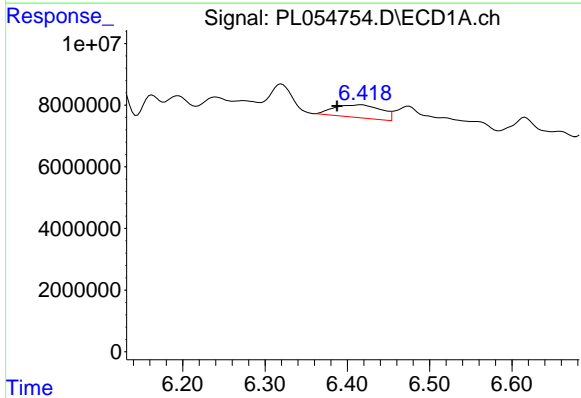


#11 alpha-Chlordane
 R.T.: 5.561 min
 Delta R.T.: 0.005 min
 Response: 183925229
 Conc: 12.47 ng/ml

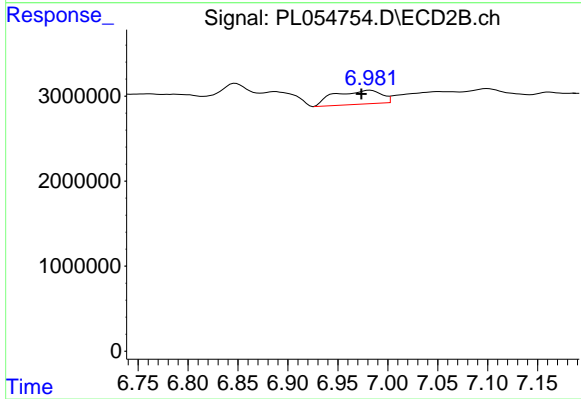
Instrument :
 ECD_L
 ClientSampled :



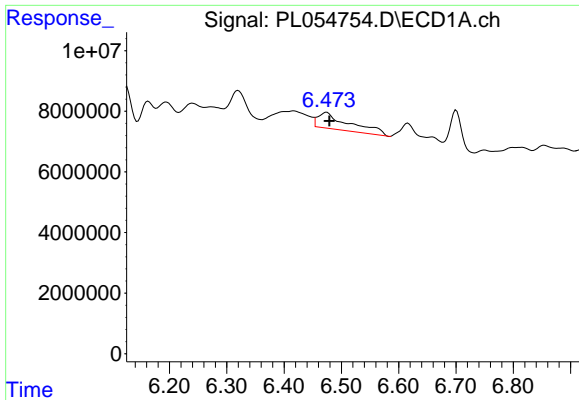
#11 alpha-Chlordane
 R.T.: 0.000 min
 Exp R.T. : 6.237 min
 Response: 0
 Conc: N.D.



#15 Endosulfan II
 R.T.: 6.417 min
 Delta R.T.: 0.030 min
 Response: 16456877
 Conc: 1.36 ng/ml

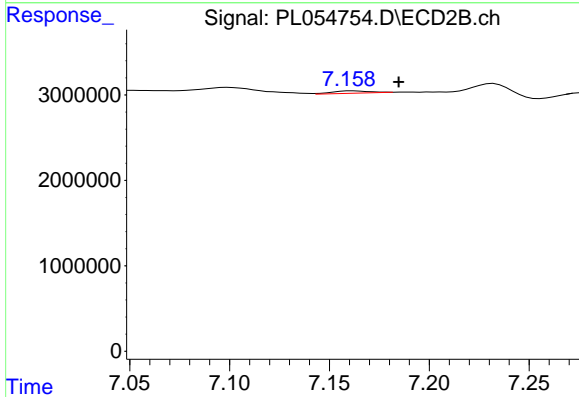


#15 Endosulfan II
 R.T.: 6.982 min
 Delta R.T.: 0.009 min
 Response: 5281354
 Conc: 2.25 ng/ml

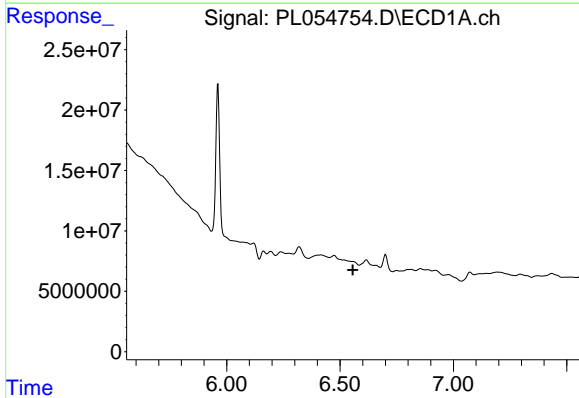


#17 4,4'-DDT
 R.T.: 6.475 min
 Delta R.T.: -0.005 min
 Response: 20870204
 Conc: 1.99 ng/ml

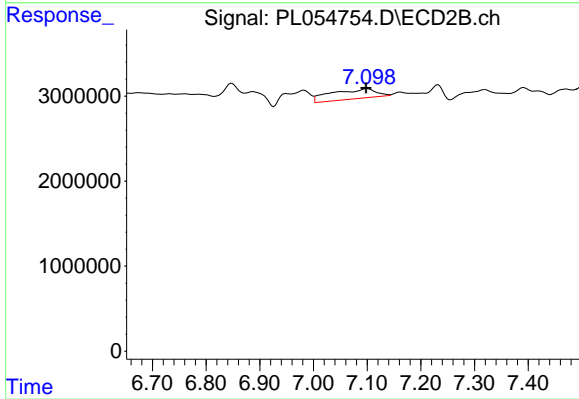
Instrument :
 ECD_L
 ClientSampleId :



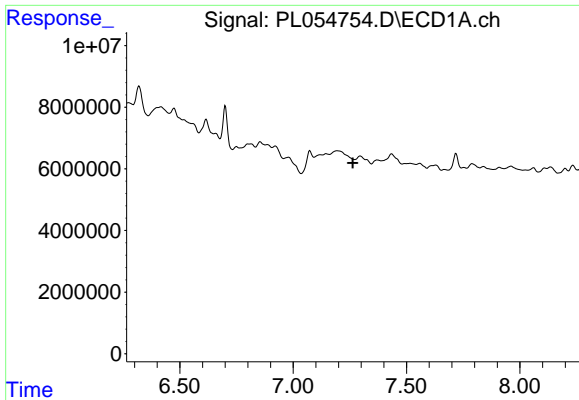
#17 4,4'-DDT
 R.T.: 7.161 min
 Delta R.T.: -0.023 min
 Response: 337095
 Conc: 0.17 ng/ml



#18 Endrin aldehyde
 R.T.: 0.000 min
 Exp R.T. : 6.556 min
 Response: 0
 Conc: N.D.



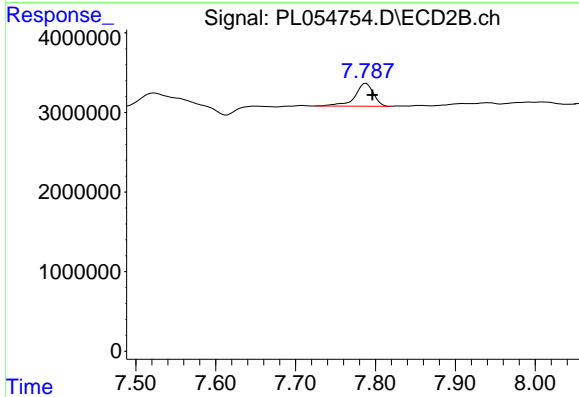
#18 Endrin aldehyde
 R.T.: 7.100 min
 Delta R.T.: 0.002 min
 Response: 6651401
 Conc: 3.39 ng/ml



#21 Endrin ketone

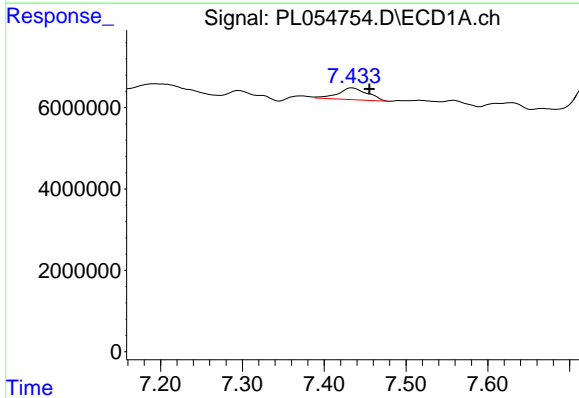
R.T.: 0.000 min
 Exp R.T.: 7.263 min
 Response: 0
 Conc: N.D.

Instrument :
 ECD_L
 ClientSampleId :



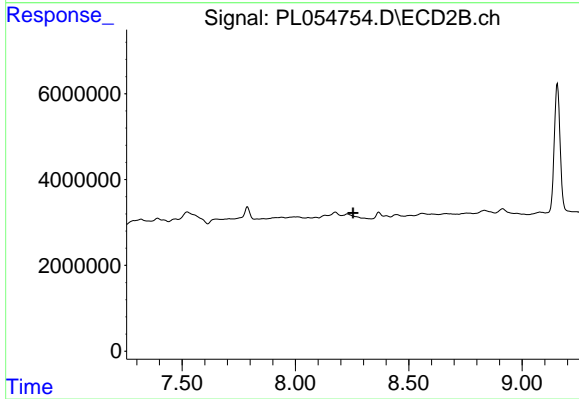
#21 Endrin ketone

R.T.: 7.788 min
 Delta R.T.: -0.008 min
 Response: 4634256
 Conc: 2.06 ng/ml



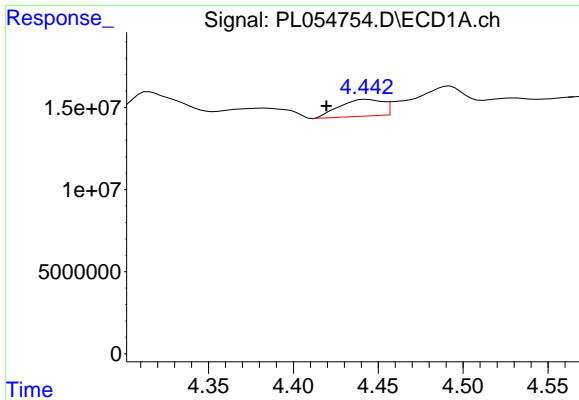
#22 Mirex

R.T.: 7.434 min
 Delta R.T.: -0.021 min
 Response: 7219394
 Conc: 0.89 ng/ml



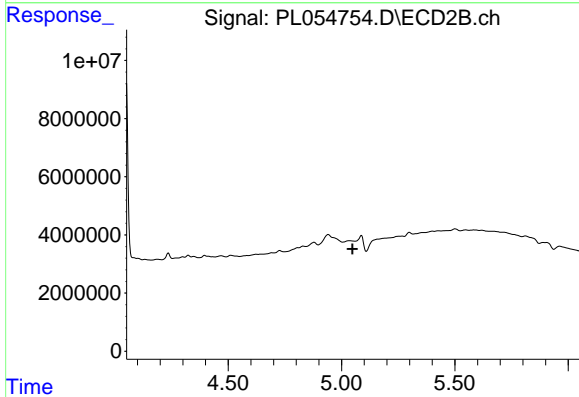
#22 Mirex

R.T.: 0.000 min
 Exp R.T.: 8.254 min
 Response: 0
 Conc: N.D.

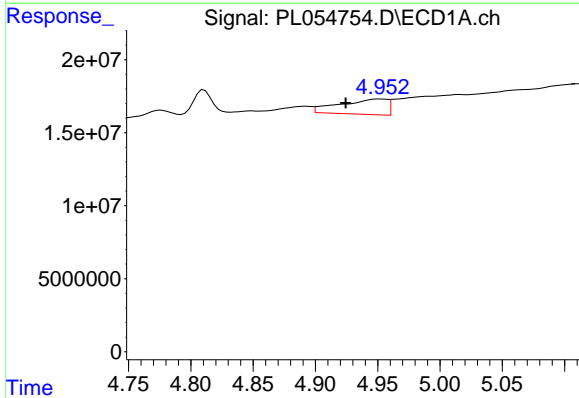


#23 Chlordane-1
 R.T.: 4.443 min
 Delta R.T.: 0.024 min
 Response: 18104684
 Conc: 45.88 ng/ml

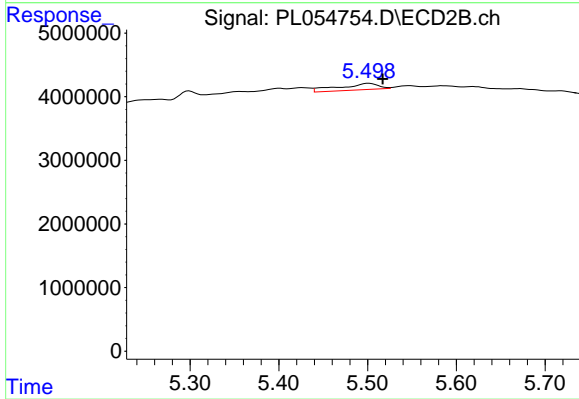
Instrument :
 ECD_L
 ClientSampled :



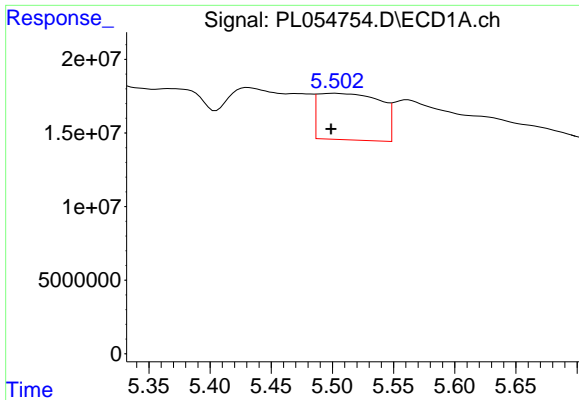
#23 Chlordane-1
 R.T.: 0.000 min
 Exp R.T. : 5.049 min
 Response: 0
 Conc: N.D.



#24 Chlordane-2
 R.T.: 4.952 min
 Delta R.T.: 0.027 min
 Response: 28021326
 Conc: 64.53 ng/ml

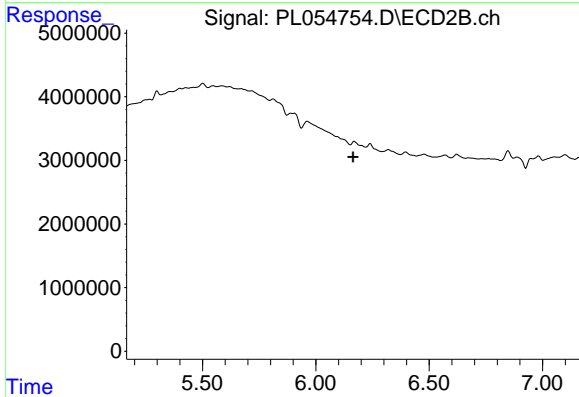


#24 Chlordane-2
 R.T.: 5.501 min
 Delta R.T.: -0.016 min
 Response: 3101900
 Conc: 34.61 ng/ml

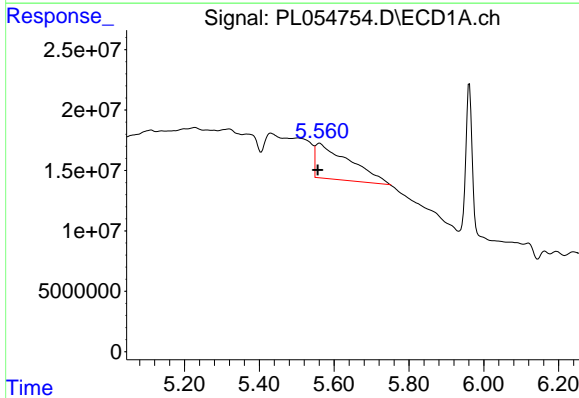


#25 Chlordane-3
 R.T.: 5.503 min
 Delta R.T.: 0.004 min
 Response: 111541260
 Conc: 86.86 ng/ml

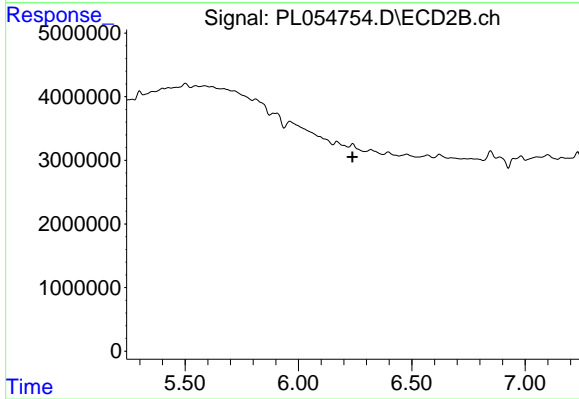
Instrument :
 ECD_L
 ClientSampleId :



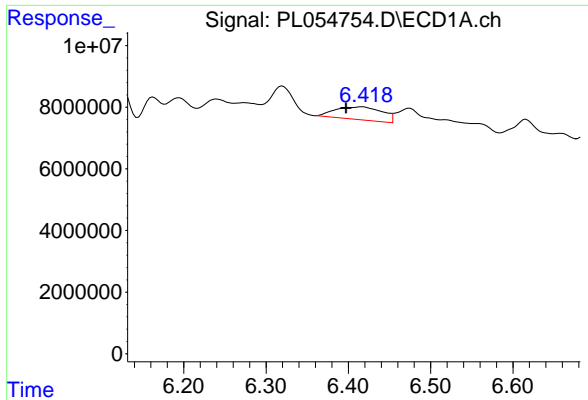
#25 Chlordane-3
 R.T.: 0.000 min
 Exp R.T. : 6.164 min
 Response: 0
 Conc: N.D.



#26 Chlordane-4
 R.T.: 5.561 min
 Delta R.T.: 0.005 min
 Response: 183925229
 Conc: 174.12 ng/ml

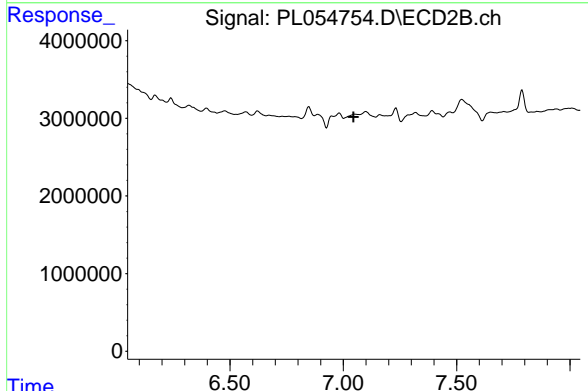


#26 Chlordane-4
 R.T.: 0.000 min
 Exp R.T. : 6.239 min
 Response: 0
 Conc: N.D.

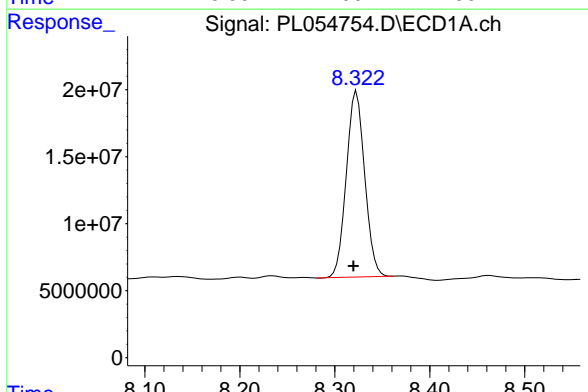


#27 Chlordane-5
 R.T.: 6.417 min
 Delta R.T.: 0.020 min
 Response: 16456877
 Conc: 43.71 ng/ml

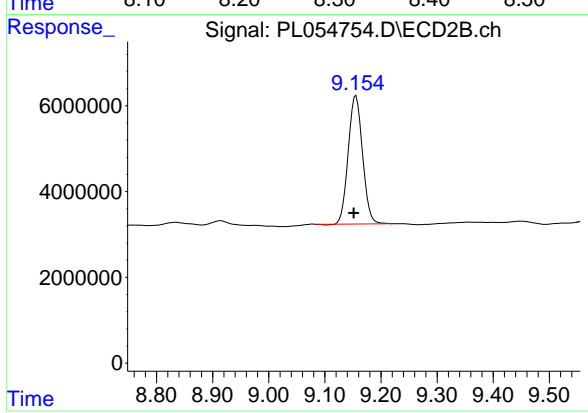
Instrument :
 ECD_L
 ClientSampled :



#27 Chlordane-5
 R.T.: 0.000 min
 Exp R.T. : 7.045 min
 Response: 0
 Conc: N.D.



#28 Decachlorobiphenyl
 R.T.: 8.323 min
 Delta R.T.: 0.003 min
 Response: 186629832
 Conc: 19.49 ng/ml



#28 Decachlorobiphenyl
 R.T.: 9.155 min
 Delta R.T.: 0.004 min
 Response: 52998102
 Conc: 22.11 ng/ml