

Data Path : Z:\pestpcbsrv\HPCHEM1\ECD_L\Data\PL120423\
 Data File : PL086966.D
 Signal(s) : Signal #1: ECD1A.ch Signal #2: ECD2B.ch
 Acq On : 04 Dec 2023 19:24
 Operator : AR\AJ
 Sample : PSTDCCC050
 Misc :
 ALS Vial : 4 Sample Multiplier: 1

Instrument :

ECD_L

ClientSampleId :

PSTDCCC050

Manual Integrations

APPROVED

Reviewed By :Yogesh Patel 12/05/2023
 Supervised By :Ankita Jodhani 12/05/2023

Integration File signal 1: autoint1.e
 Integration File signal 2: autoint2.e
 Quant Time: Dec 04 20:39:19 2023
 Quant Method : Z:\pestpcbsrv\HPCHEM1\ECD_L\methods\PL112923.M
 Quant Title : GC Extractables
 QLast Update : Wed Nov 29 06:35:04 2023
 Response via : Initial Calibration
 Integrator: ChemStation

Volume Inj. : 1 µl
 Signal #1 Phase : ZB-MR2 Signal #2 Phase: ZB-MR1
 Signal #1 Info : 30M x 0.32mm x0.2 Signal #2 Info : 30M x 0.32mm x0.5µm

Compound	RT#1	RT#2	Resp#1	Resp#2	ng/ml	ng/ml

System Monitoring Compounds						
1) SA Tetrachlo...	3.342	2.609	158.4E6	44310741	49.555	48.721
28) SA Decachlor...	8.843	7.761	133.5E6	53746670	50.012	48.747
Target Compounds						
2) A alpha-BHC	3.796	3.108	234.2E6	63330630	50.593	49.869
3) MA gamma-BHC...	4.128	3.435	220.8E6	61131209	50.473	50.032
4) MA Heptachlor	4.715	3.770	216.9E6	61810613	54.651	52.936
5) MB Aldrin	5.055	4.046	213.2E6	60213947	50.514	49.334
6) B beta-BHC	4.332	3.738	93043916	26582739	49.739	50.243
7) B delta-BHC	4.575	3.962	212.1E6	59104142	49.970	50.612
8) B Heptachlo...	5.485	4.551	187.9E6	55745436	53.033	48.969
9) A Endosulfan I	5.869	4.919	178.0E6	53909231	49.418	41.708
10) B gamma-Chl...	5.743	4.804	192.7E6	56623518	51.240	49.397
11) B alpha-Chl...	5.822	4.868	191.3E6	57723623	50.807	43.408
12) B 4,4'-DDE	6.006	5.067	158.0E6	47432063	52.267	51.665
13) MA Dieldrin	6.146	5.186	181.3E6	54016417	52.216	50.438
14) MA Endrin	6.375	5.459	147.0E6	46764664	57.016	55.487
15) B Endosulfa...	6.598	5.758	150.7E6	47926763	52.800	51.615
16) A 4,4'-DDD	6.526	5.624	126.3E6	40052834	53.939	51.860
17) MA 4,4'-DDT	6.841	5.874	132.5E6	42571651	51.627	52.788
18) B Endrin al...	6.729	5.939	111.2E6	37492700	52.135m	53.667
19) B Endosulfa...	6.966	6.164	148.5E6	48320620	52.007	50.927
20) A Methoxychlor	7.328	6.458	68608251	25927862	51.957	50.373
21) B Endrin ke...	7.448	6.665	153.6E6	57459050	51.384	50.337
22) Mirex	7.920	6.842	128.6E6	50777592	50.265	48.925

(f)=RT Delta > 1/2 Window (#)=Amounts differ by > 25% (m)=manual int.

Data Path : Z:\pestpcbsrv\HPCHEM1\ECD_L\Data\PL120423\
 Data File : PL086966.D
 Signal(s) : Signal #1: ECD1A.ch Signal #2: ECD2B.ch
 Acq On : 04 Dec 2023 19:24
 Operator : AR\AJ
 Sample : PSTDCCC050
 Misc :
 ALS Vial : 4 Sample Multiplier: 1

Instrument :

ECD_L

ClientSampleId :

PSTDCCC050

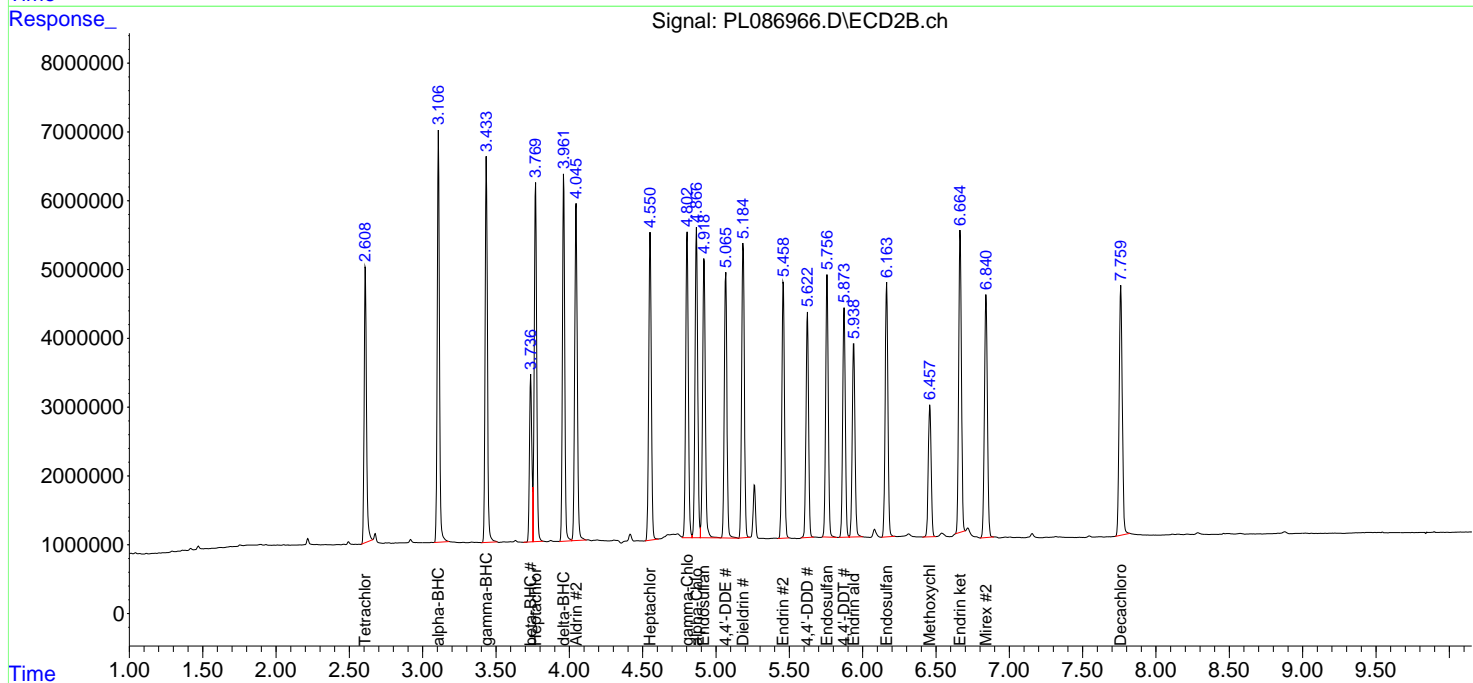
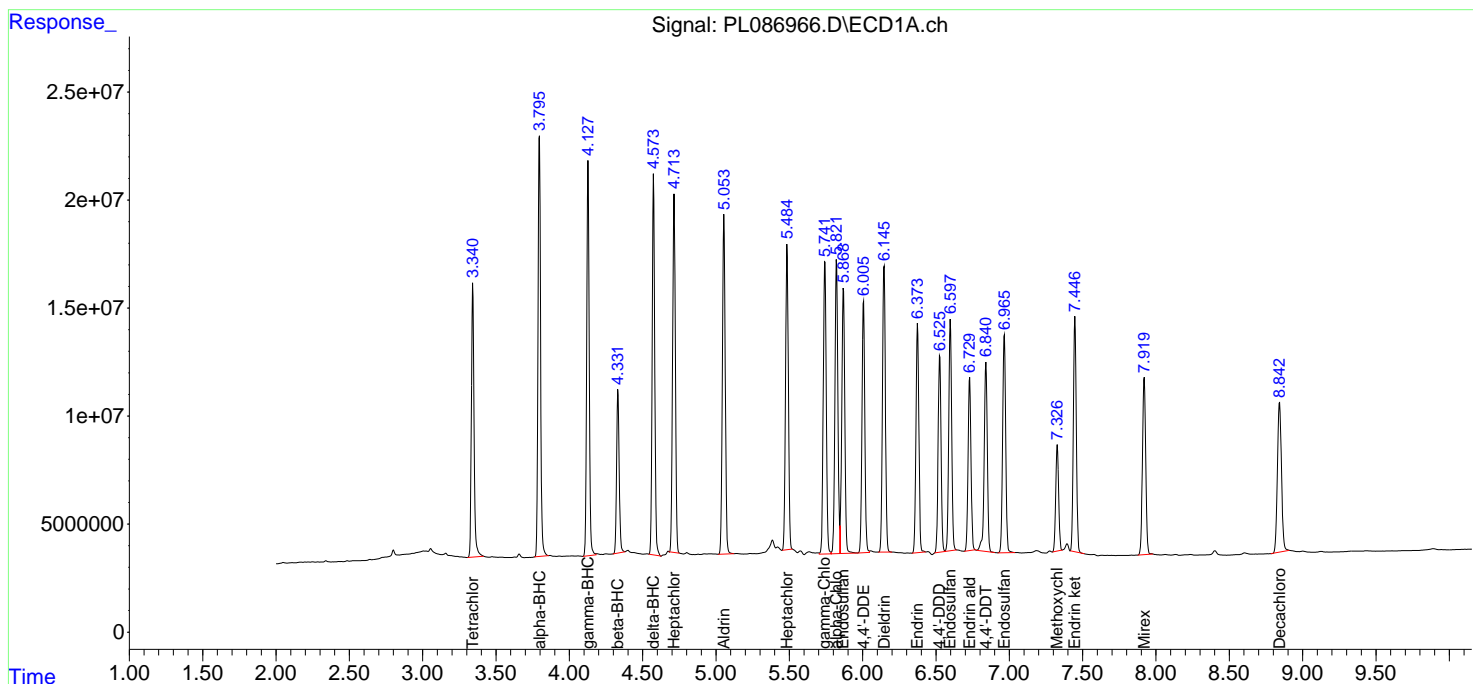
Manual Integrations

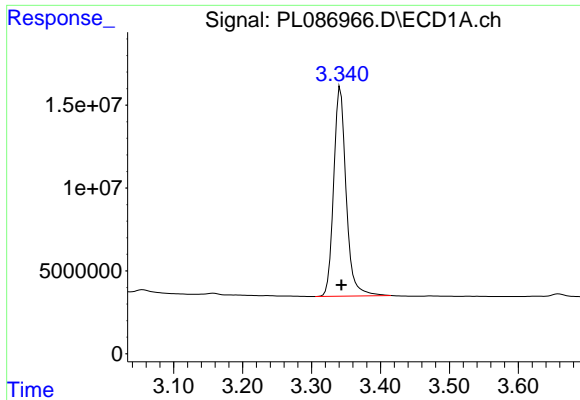
APPROVED

Reviewed By :Yogesh Patel 12/05/2023
 Supervised By :Ankita Jodhani 12/05/2023

Integration File signal 1: autoint1.e
 Integration File signal 2: autoint2.e
 Quant Time: Dec 04 20:39:19 2023
 Quant Method : Z:\pestpcbsrv\HPCHEM1\ECD_L\methods\PL112923.M
 Quant Title : GC Extractables
 QLast Update : Wed Nov 29 06:35:04 2023
 Response via : Initial Calibration
 Integrator: ChemStation

Volume Inj. : 1 µl
 Signal #1 Phase : ZB-MR2 Signal #2 Phase: ZB-MR1
 Signal #1 Info : 30M x 0.32mm x0.2 Signal #2 Info : 30M x 0.32mm x0.5µm





#1 Tetrachloro-m-xylene

R.T.: 3.342 min
 Delta R.T.: -0.001 min
 Response: 158432795
 Conc: 49.55 ng/ml

Instrument :

ECD_L

ClientSampleId :

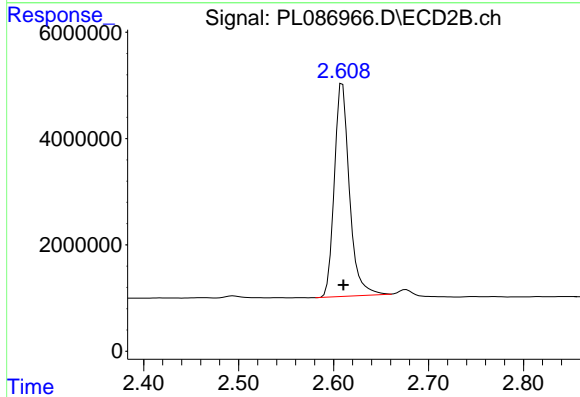
PSTDCCC050

Manual Integrations

APPROVED

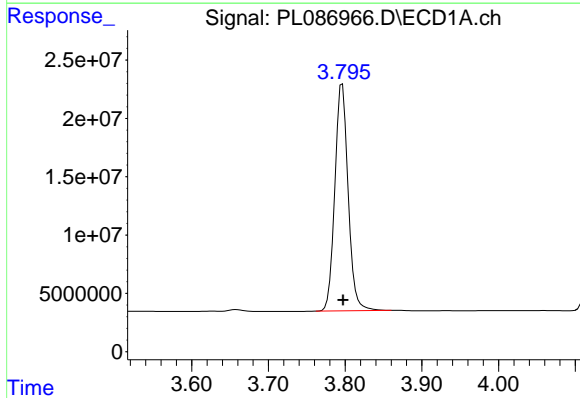
Reviewed By :Yogesh Patel 12/05/2023

Supervised By :Ankita Jodhani 12/05/2023



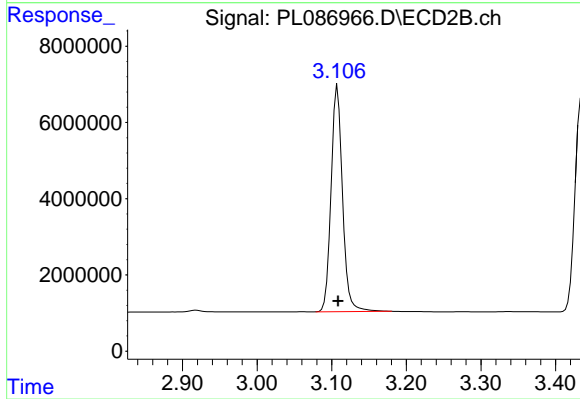
#1 Tetrachloro-m-xylene

R.T.: 2.609 min
 Delta R.T.: 0.000 min
 Response: 44310741
 Conc: 48.72 ng/ml



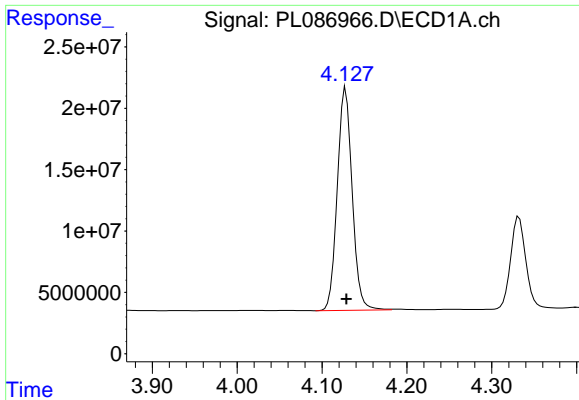
#2 alpha-BHC

R.T.: 3.796 min
 Delta R.T.: -0.001 min
 Response: 234249243
 Conc: 50.59 ng/ml



#2 alpha-BHC

R.T.: 3.108 min
 Delta R.T.: 0.000 min
 Response: 63330630
 Conc: 49.87 ng/ml

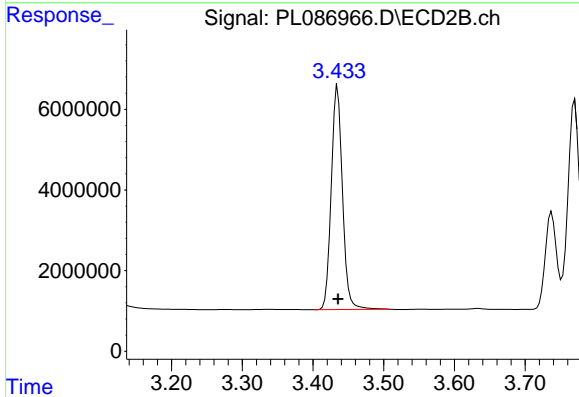


#3 gamma-BHC (Lindane)
 R.T.: 4.128 min
 Delta R.T.: 0.000 min
 Response: 220809656
 Conc: 50.47 ng/ml

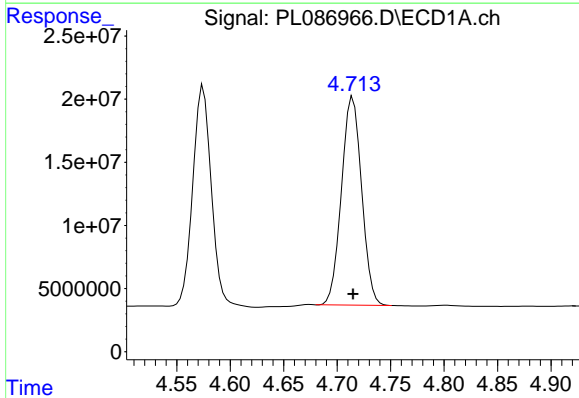
Instrument :
 ECD_L
 ClientSampleId :
 PSTDCCC050

Manual Integrations
 APPROVED

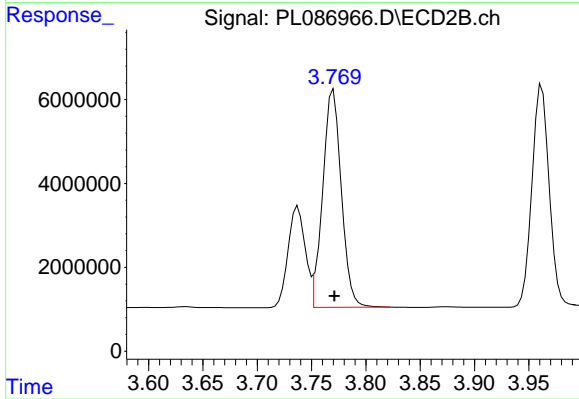
Reviewed By :Yogesh Patel 12/05/2023
 Supervised By :Ankita Jodhani 12/05/2023



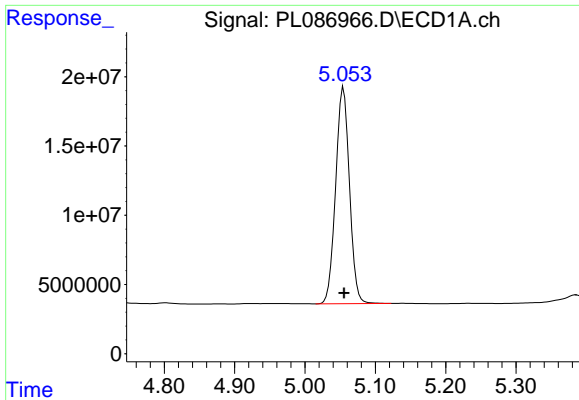
#3 gamma-BHC (Lindane)
 R.T.: 3.435 min
 Delta R.T.: 0.000 min
 Response: 61131209
 Conc: 50.03 ng/ml



#4 Heptachlor
 R.T.: 4.715 min
 Delta R.T.: 0.000 min
 Response: 216896293
 Conc: 54.65 ng/ml



#4 Heptachlor
 R.T.: 3.770 min
 Delta R.T.: 0.000 min
 Response: 61810613
 Conc: 52.94 ng/ml

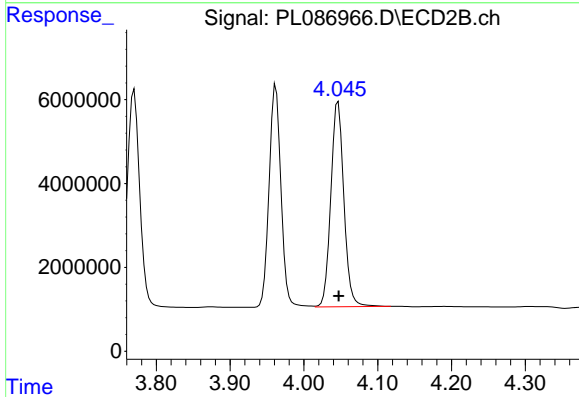


#5 Aldrin
 R.T.: 5.055 min
 Delta R.T.: 0.000 min
 Response: 213175774
 Conc: 50.51 ng/ml

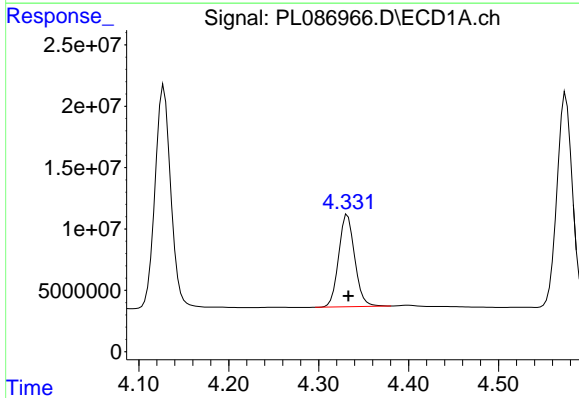
Instrument :
 ECD_L
 ClientSampleId :
 PSTDCCC050

Manual Integrations
APPROVED

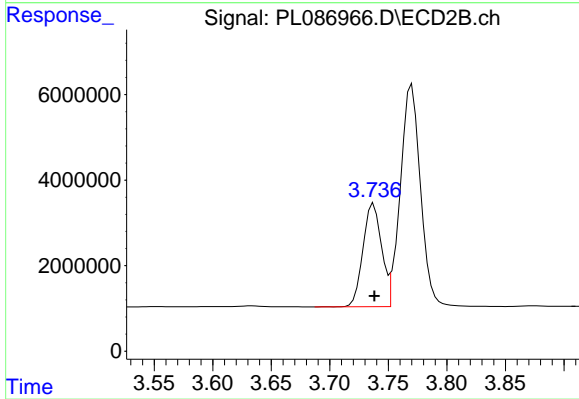
Reviewed By :Yogesh Patel 12/05/2023
 Supervised By :Ankita Jodhani 12/05/2023



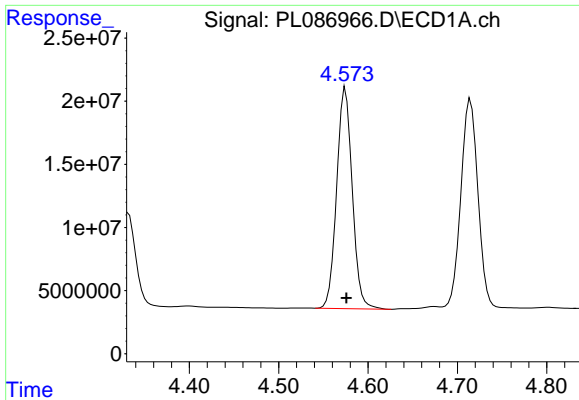
#5 Aldrin
 R.T.: 4.046 min
 Delta R.T.: 0.000 min
 Response: 60213947
 Conc: 49.33 ng/ml



#6 beta-BHC
 R.T.: 4.332 min
 Delta R.T.: 0.000 min
 Response: 93043916
 Conc: 49.74 ng/ml



#6 beta-BHC
 R.T.: 3.738 min
 Delta R.T.: 0.000 min
 Response: 26582739
 Conc: 50.24 ng/ml



#7 delta-BHC

R.T.: 4.575 min
 Delta R.T.: 0.000 min
 Response: 212132447
 Conc: 49.97 ng/ml

Instrument :

ECD_L

ClientSampleId :

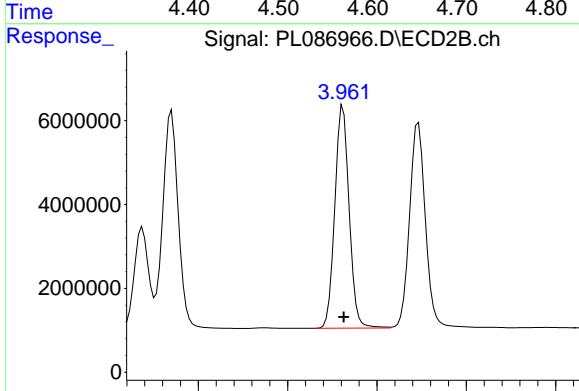
PSTDCCC050

Manual Integrations

APPROVED

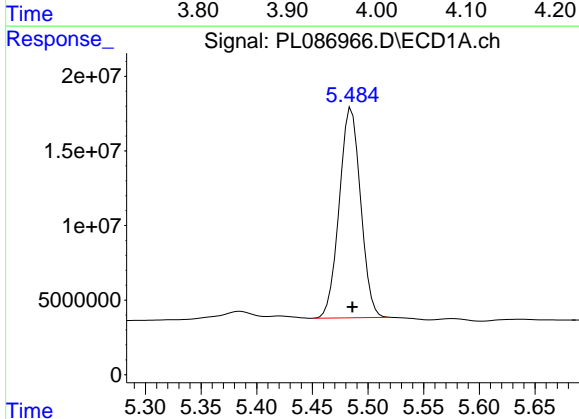
Reviewed By :Yogesh Patel 12/05/2023

Supervised By :Ankita Jodhani 12/05/2023



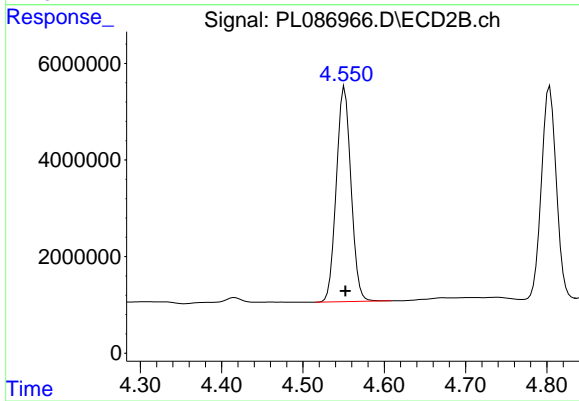
#7 delta-BHC

R.T.: 3.962 min
 Delta R.T.: 0.000 min
 Response: 59104142
 Conc: 50.61 ng/ml



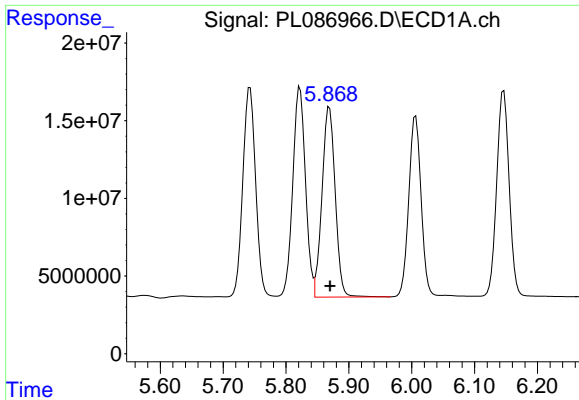
#8 Heptachlor epoxide

R.T.: 5.485 min
 Delta R.T.: -0.001 min
 Response: 187860191
 Conc: 53.03 ng/ml



#8 Heptachlor epoxide

R.T.: 4.551 min
 Delta R.T.: -0.001 min
 Response: 55745436
 Conc: 48.97 ng/ml



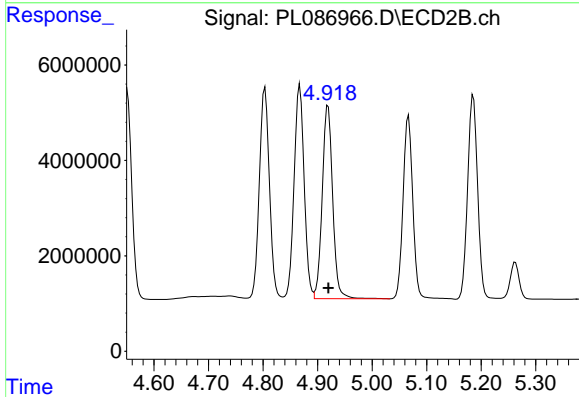
#9 Endosulfan I

R.T.: 5.869 min
 Delta R.T.: -0.001 min
 Response: 178044823
 Conc: 49.42 ng/ml

Instrument : ECD_L
 ClientSampleId : PSTDCCC050

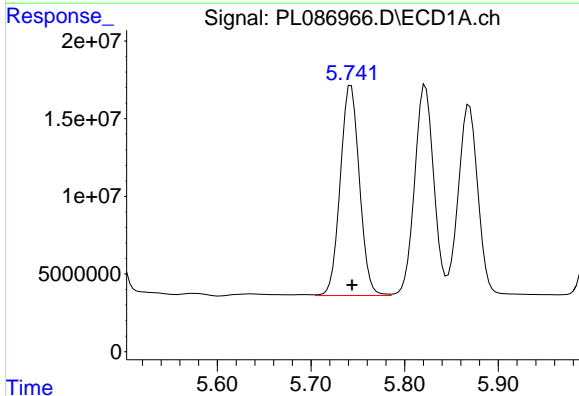
Manual Integrations
 APPROVED

Reviewed By :Yogesh Patel 12/05/2023
 Supervised By :Ankita Jodhani 12/05/2023



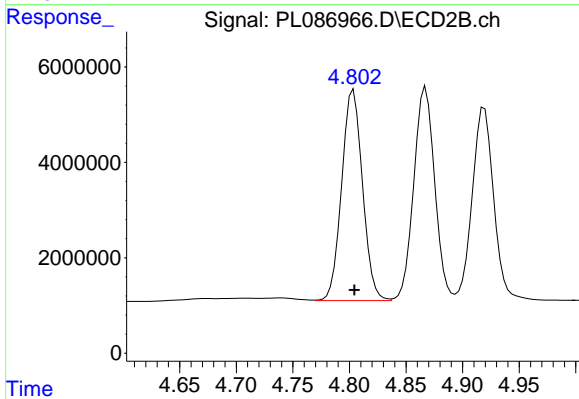
#9 Endosulfan I

R.T.: 4.919 min
 Delta R.T.: 0.000 min
 Response: 53909231
 Conc: 41.71 ng/ml



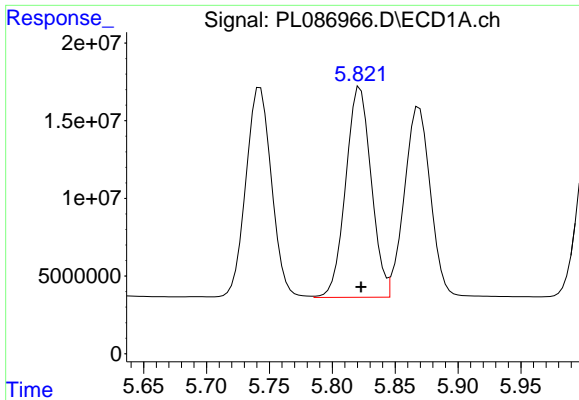
#10 gamma-Chlordane

R.T.: 5.743 min
 Delta R.T.: -0.001 min
 Response: 192657262
 Conc: 51.24 ng/ml



#10 gamma-Chlordane

R.T.: 4.804 min
 Delta R.T.: 0.000 min
 Response: 56623518
 Conc: 49.40 ng/ml



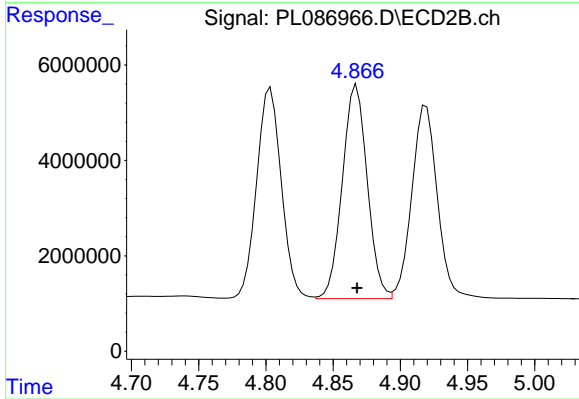
#11 alpha-Chlordane

R.T.: 5.822 min
 Delta R.T.: 0.000 min
 Response: 191264390
 Conc: 50.81 ng/ml

Instrument :
 ECD_L
 ClientSampleId :
 PSTDCCC050

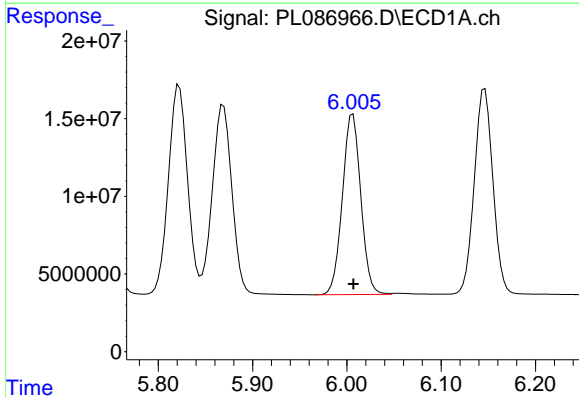
Manual Integrations
 APPROVED

Reviewed By :Yogesh Patel 12/05/2023
 Supervised By :Ankita Jodhani 12/05/2023



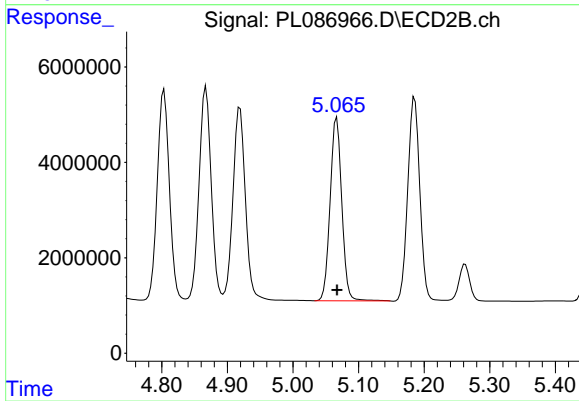
#11 alpha-Chlordane

R.T.: 4.868 min
 Delta R.T.: 0.000 min
 Response: 57723623
 Conc: 43.41 ng/ml



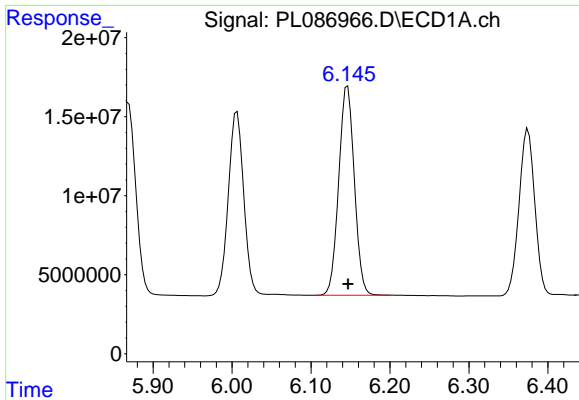
#12 4,4'-DDE

R.T.: 6.006 min
 Delta R.T.: 0.000 min
 Response: 158022448
 Conc: 52.27 ng/ml



#12 4,4'-DDE

R.T.: 5.067 min
 Delta R.T.: 0.000 min
 Response: 47432063
 Conc: 51.66 ng/ml



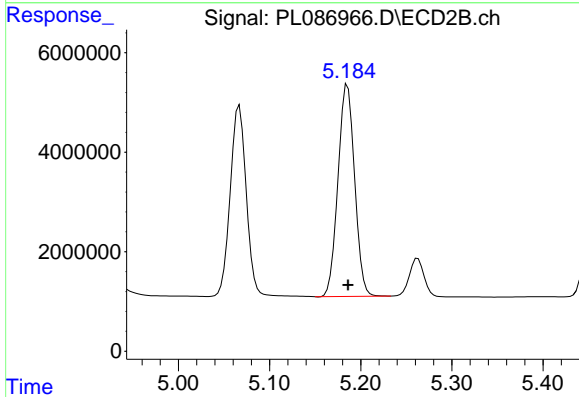
#13 Dieldrin

R.T.: 6.146 min
 Delta R.T.: 0.000 min
 Response: 181276580
 Conc: 52.22 ng/ml

Instrument :
 ECD_L
 ClientSampleId :
 PSTDCCC050

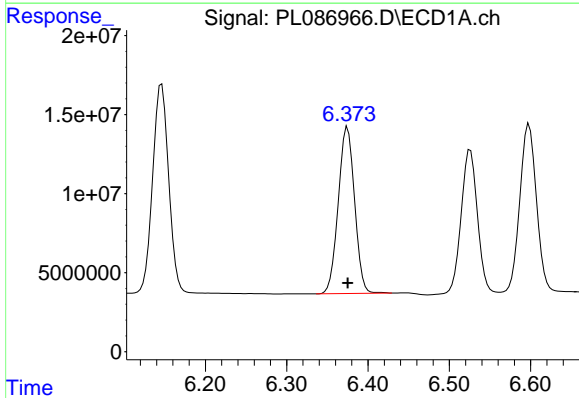
Manual Integrations
 APPROVED

Reviewed By :Yogesh Patel 12/05/2023
 Supervised By :Ankita Jodhani 12/05/2023



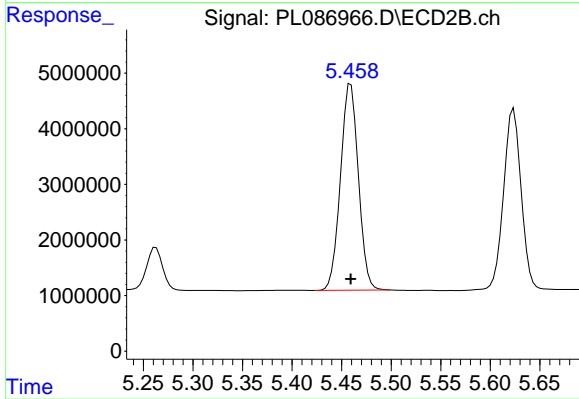
#13 Dieldrin

R.T.: 5.186 min
 Delta R.T.: 0.000 min
 Response: 54016417
 Conc: 50.44 ng/ml



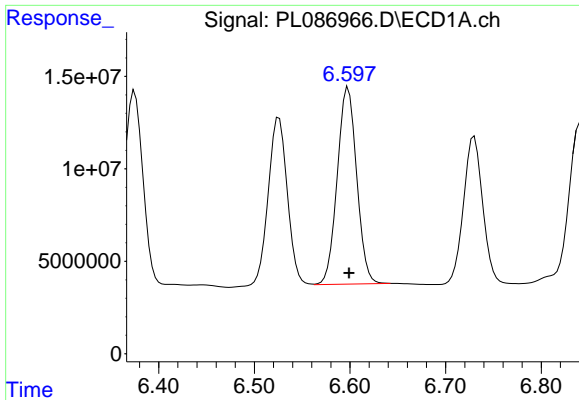
#14 Endrin

R.T.: 6.375 min
 Delta R.T.: 0.000 min
 Response: 146967313
 Conc: 57.02 ng/ml



#14 Endrin

R.T.: 5.459 min
 Delta R.T.: 0.000 min
 Response: 46764664
 Conc: 55.49 ng/ml



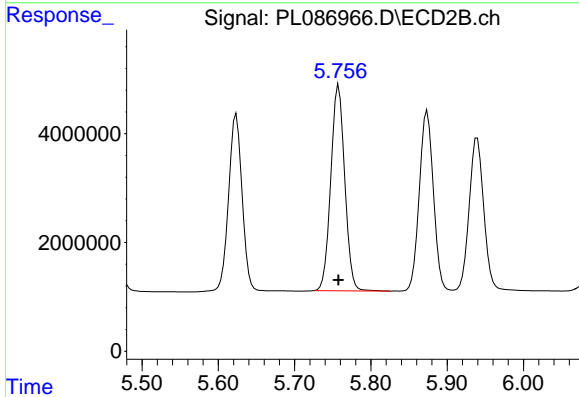
#15 Endosulfan II

R.T.: 6.598 min
 Delta R.T.: 0.000 min
 Response: 150669633
 Conc: 52.80 ng/ml

Instrument :
 ECD_L
 ClientSampleId :
 PSTDCCC050

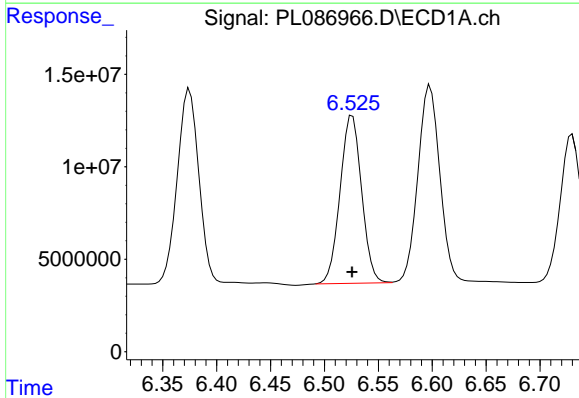
Manual Integrations
 APPROVED

Reviewed By :Yogesh Patel 12/05/2023
 Supervised By :Ankita Jodhani 12/05/2023



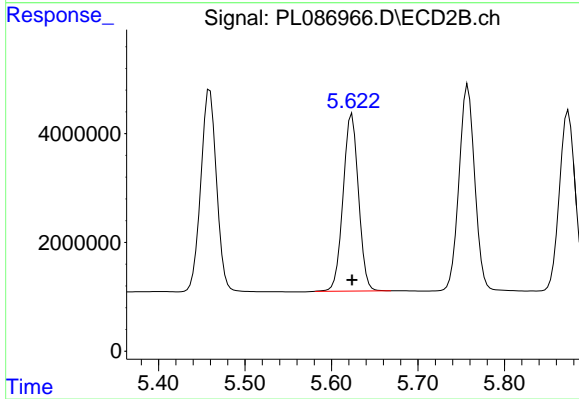
#15 Endosulfan II

R.T.: 5.758 min
 Delta R.T.: 0.000 min
 Response: 47926763
 Conc: 51.61 ng/ml



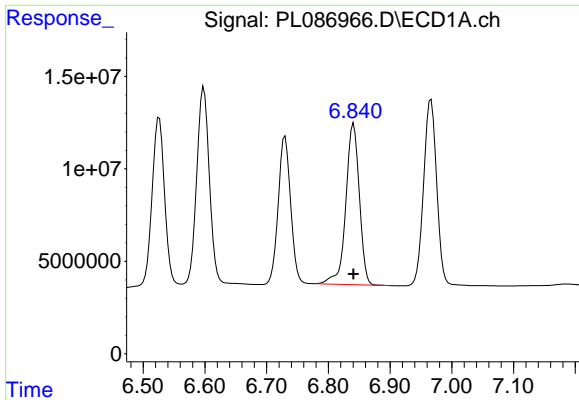
#16 4,4'-DDD

R.T.: 6.526 min
 Delta R.T.: 0.000 min
 Response: 126301566
 Conc: 53.94 ng/ml



#16 4,4'-DDD

R.T.: 5.624 min
 Delta R.T.: 0.000 min
 Response: 40052834
 Conc: 51.86 ng/ml



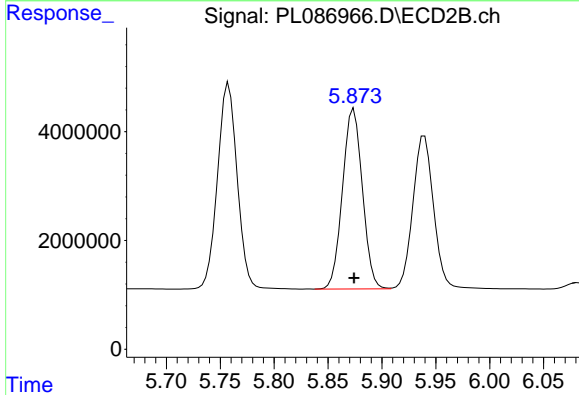
#17 4,4'-DDT

R.T.: 6.841 min
 Delta R.T.: 0.000 min
 Response: 132509352
 Conc: 51.63 ng/ml

Instrument : ECD_L
 ClientSampleId : PSTDCCC050

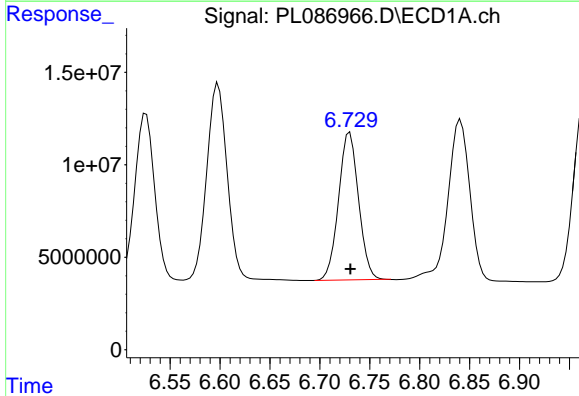
Manual Integrations
 APPROVED

Reviewed By :Yogesh Patel 12/05/2023
 Supervised By :Ankita Jodhani 12/05/2023



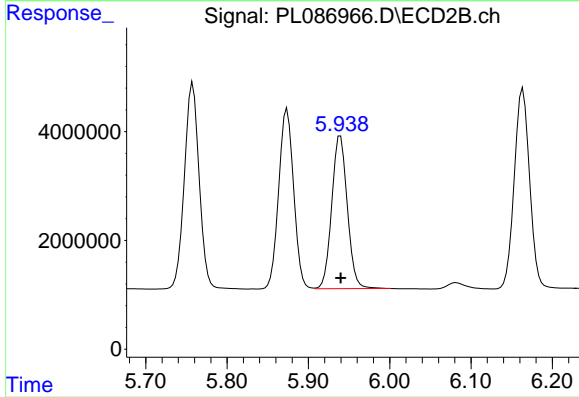
#17 4,4'-DDT

R.T.: 5.874 min
 Delta R.T.: 0.000 min
 Response: 42571651
 Conc: 52.79 ng/ml



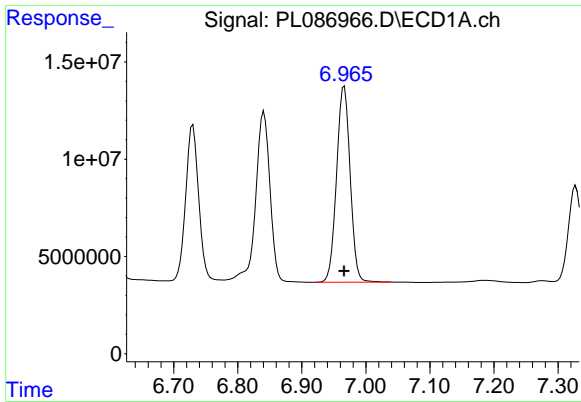
#18 Endrin aldehyde

R.T.: 6.729 min
 Delta R.T.: -0.002 min
 Response: 111213737
 Conc: 52.13 ng/ml m



#18 Endrin aldehyde

R.T.: 5.939 min
 Delta R.T.: 0.000 min
 Response: 37492700
 Conc: 53.67 ng/ml



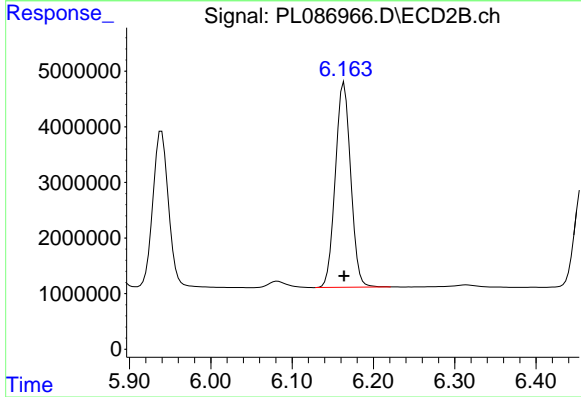
#19 Endosulfan Sulfate

R.T.: 6.966 min
 Delta R.T.: 0.000 min
 Response: 148518357
 Conc: 52.01 ng/ml

Instrument : ECD_L
 ClientSampleId : PSTDCCC050

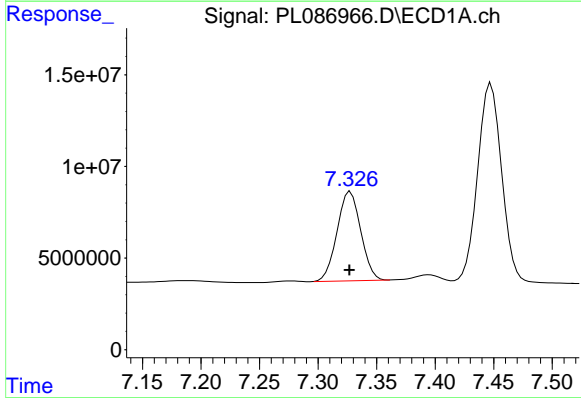
Manual Integrations
 APPROVED

Reviewed By :Yogesh Patel 12/05/2023
 Supervised By :Ankita Jodhani 12/05/2023



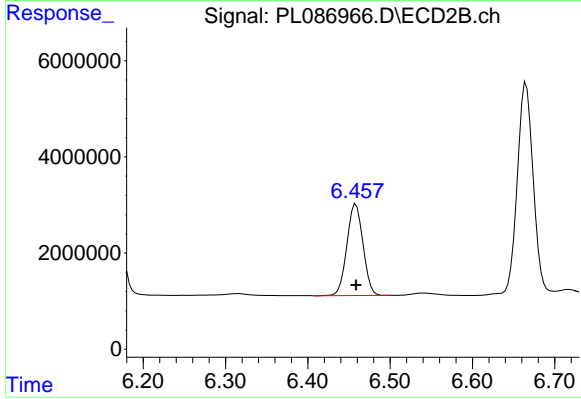
#19 Endosulfan Sulfate

R.T.: 6.164 min
 Delta R.T.: 0.000 min
 Response: 48320620
 Conc: 50.93 ng/ml



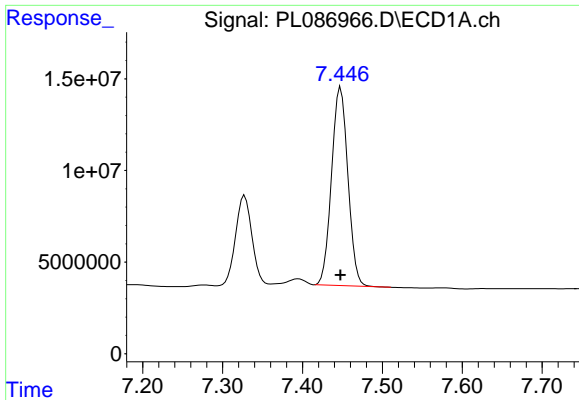
#20 Methoxychlor

R.T.: 7.328 min
 Delta R.T.: 0.000 min
 Response: 68608251
 Conc: 51.96 ng/ml



#20 Methoxychlor

R.T.: 6.458 min
 Delta R.T.: 0.000 min
 Response: 25927862
 Conc: 50.37 ng/ml



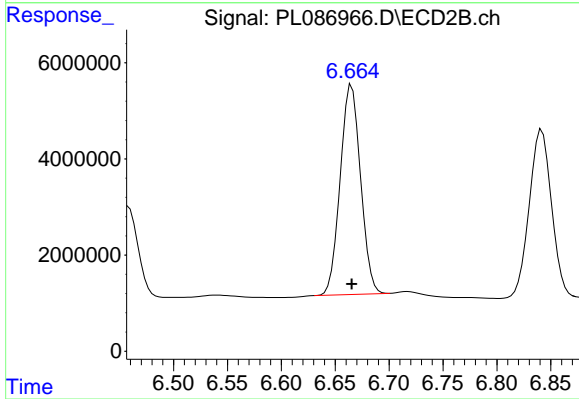
#21 Endrin ketone

R.T.: 7.448 min
 Delta R.T.: 0.000 min
 Response: 153620761
 Conc: 51.38 ng/ml

Instrument :
 ECD_L
 ClientSampleId :
 PSTDCCC050

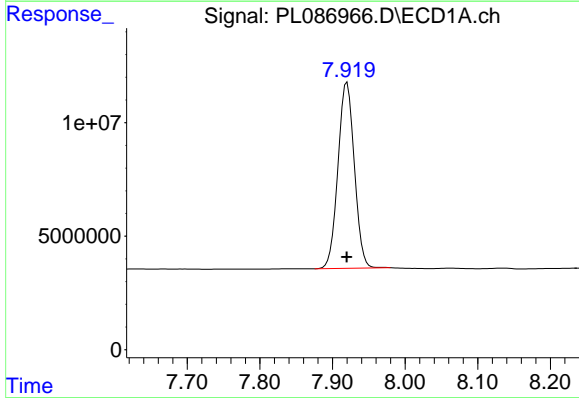
Manual Integrations
 APPROVED

Reviewed By :Yogesh Patel 12/05/2023
 Supervised By :Ankita Jodhani 12/05/2023



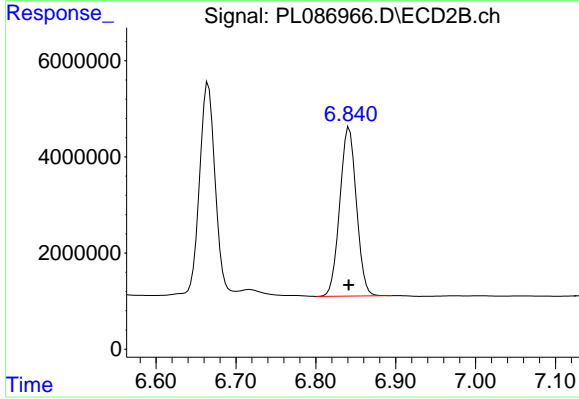
#21 Endrin ketone

R.T.: 6.665 min
 Delta R.T.: 0.000 min
 Response: 57459050
 Conc: 50.34 ng/ml



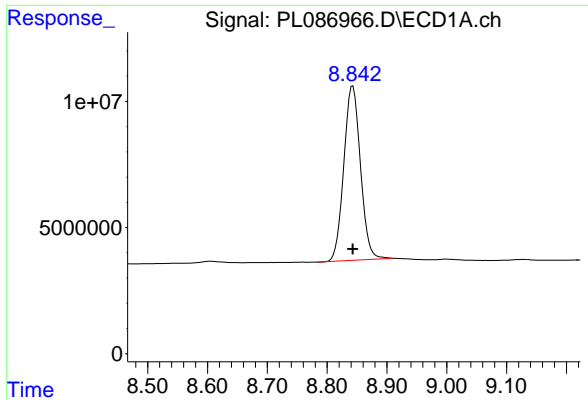
#22 Mirex

R.T.: 7.920 min
 Delta R.T.: 0.000 min
 Response: 128561969
 Conc: 50.26 ng/ml



#22 Mirex

R.T.: 6.842 min
 Delta R.T.: 0.000 min
 Response: 50777592
 Conc: 48.93 ng/ml



#28 Decachlorobiphenyl

R.T.: 8.843 min
Delta R.T.: 0.000 min
Response: 133513670
Conc: 50.01 ng/ml

Instrument :

ECD_L

ClientSampleId :

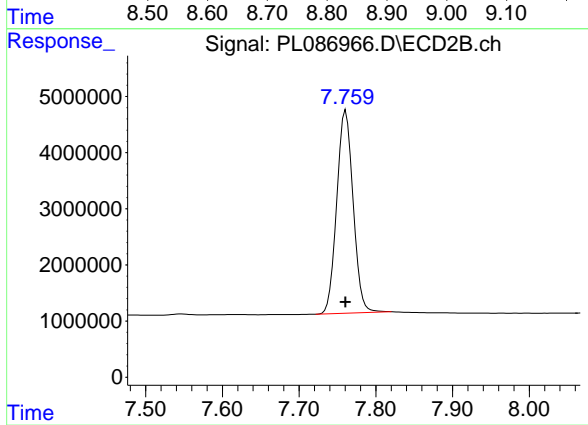
PSTDCCC050

Manual Integrations

APPROVED

Reviewed By :Yogesh Patel 12/05/2023

Supervised By :Ankita Jodhani 12/05/2023



#28 Decachlorobiphenyl

R.T.: 7.761 min
Delta R.T.: 0.000 min
Response: 53746670
Conc: 48.75 ng/ml