

Data Path : Z:\pestpcbsrv\HPCHEM1\ECD\_L\Data\pl120522\  
 Data File : PL079589-1.D  
 Signal(s) : Signal #1: ECD1A.ch Signal #2: ECD2B.ch  
 Acq On : 05 Dec 2022 20:36  
 Operator : AR\AJ  
 Sample : I.BLK  
 Misc :  
 ALS Vial : 2 Sample Multiplier: 1

Instrument :  
 ECD\_L  
 ClientSampleId :

Integration File signal 1: autoint1.e  
 Integration File signal 2: autoint2.e  
 Quant Time: Dec 06 01:33:52 2022  
 Quant Method : Z:\pestpcbsrv\HPCHEM1\ECD\_L\methods\PL112322.M  
 Quant Title : GC Extractables  
 QLast Update : Thu Nov 24 00:09:49 2022  
 Response via : Initial Calibration  
 Integrator: ChemStation

Volume Inj. : 1 µl  
 Signal #1 Phase : ZB-MR1 Signal #2 Phase: ZB-MR1  
 Signal #1 Info : 30M x 0.32mm x0.2 Signal #2 Info : 30M x 0.32mm x0.5µm

	Compound	RT#1	RT#2	Resp#1	Resp#2	ng/ml	ng/ml
-----							
System Monitoring Compounds							
1)	SA Tetrachlo...	3.325	2.564	54315398	56148576	24.044	20.628
28)	SA Decachlor...	8.776	7.635	36751103	43824616	18.923	18.655
Target Compounds							
2)	A alpha-BHC	0.000	3.038	0	201432	N.D.	0.047 #
4)	MA Heptachlor	0.000	3.703	0	158806	N.D.	0.041 #
5)	MB Aldrin	0.000	3.990f	0	432513	N.D.	0.116 #
6)	B beta-BHC	0.000	3.673	0	554996	N.D.	0.366 #
8)	B Heptachlo...	0.000	4.492f	0	1454233	N.D.	0.431 #
11)	B alpha-Chl...	0.000	4.773	0	29059304	N.D.	8.677 #
12)	B 4,4'-DDE	0.000	4.960	0	1651557	N.D.	0.539 #
13)	MA Dieldrin	0.000	5.085	0	1418145	N.D.	0.421 #
14)	MA Endrin	0.000	5.389f	0	1127404	N.D.	0.373 #
20)	A Methoxychlor	7.285	0.000	3998015	0	3.314	N.D. #
23)	Chlordane-1	0.000	3.539	0	663885	N.D.	6.242 #
26)	Chlordane-4	0.000	4.773	0	29059304	N.D.	80.194 #
27)	Chlordane-5	6.616f	0.000	2655838	0	33.209	N.D. #
-----							

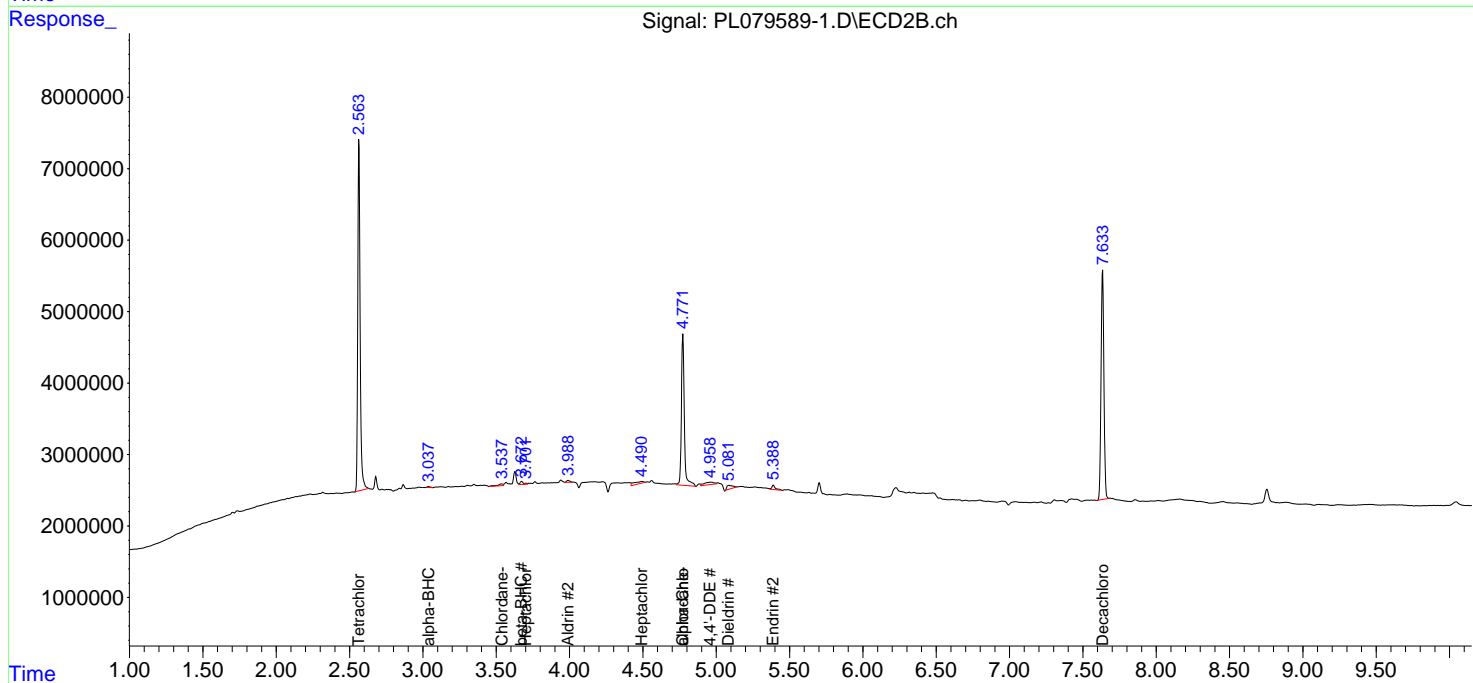
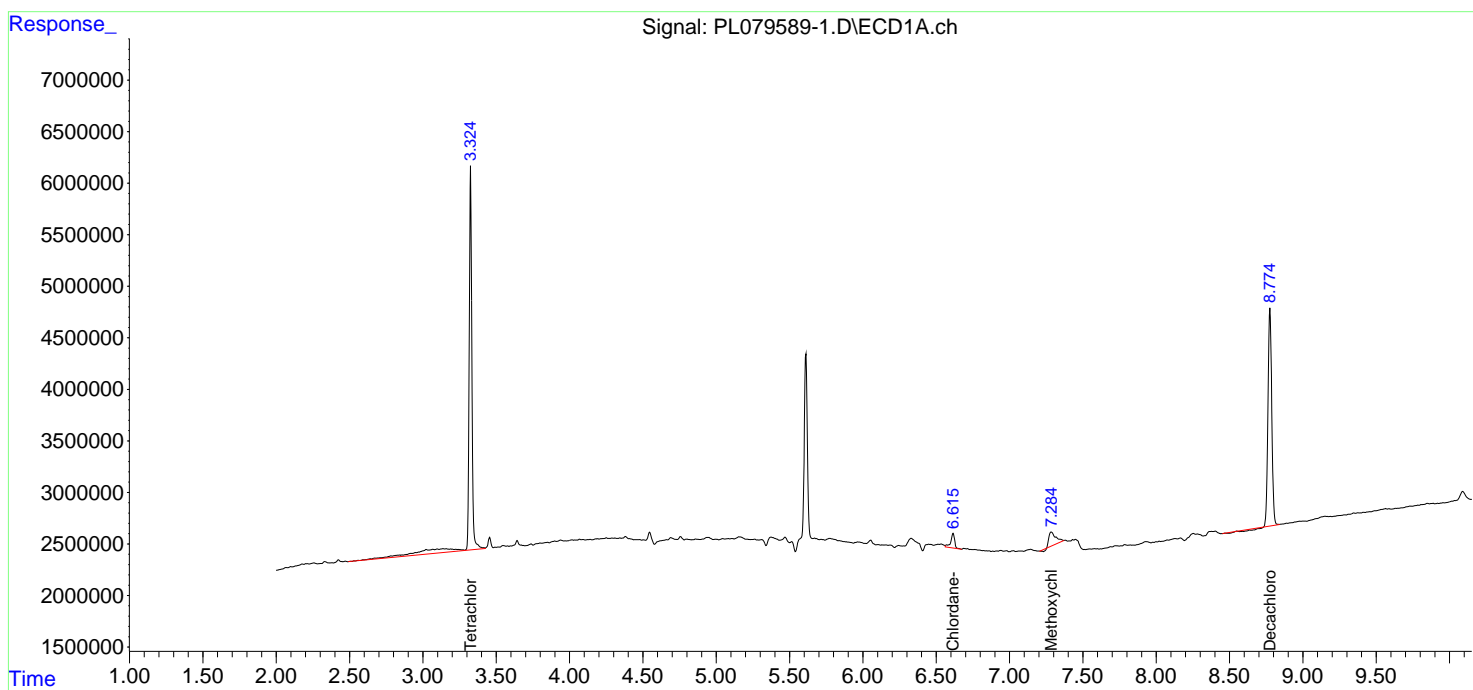
(f)=RT Delta > 1/2 Window (#)=Amounts differ by > 25% (m)=manual int.

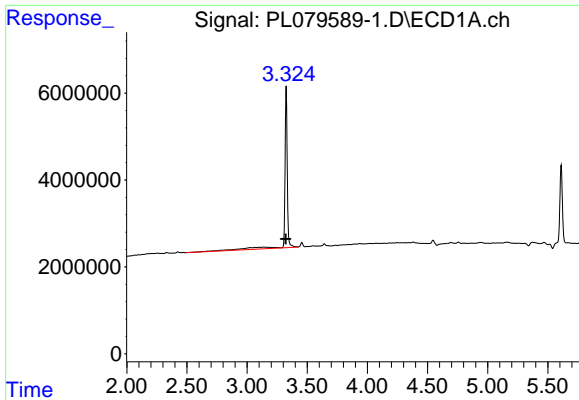
Data Path : Z:\pestpcbsrv\HPCHEM1\ECD\_L\Data\p1120522\  
 Data File : PL079589-1.D  
 Signal(s) : Signal #1: ECD1A.ch Signal #2: ECD2B.ch  
 Acq On : 05 Dec 2022 20:36  
 Operator : AR\AJ  
 Sample : I.BLK  
 Misc :  
 ALS Vial : 2 Sample Multiplier: 1

Instrument :  
 ECD\_L  
 ClientSampleId :

Integration File signal 1: autoint1.e  
 Integration File signal 2: autoint2.e  
 Quant Time: Dec 06 01:33:52 2022  
 Quant Method : Z:\pestpcbsrv\HPCHEM1\ECD\_L\methods\PL112322.M  
 Quant Title : GC Extractables  
 QLast Update : Thu Nov 24 00:09:49 2022  
 Response via : Initial Calibration  
 Integrator: ChemStation

Volume Inj. : 1 µl  
 Signal #1 Phase : ZB-MR2 Signal #2 Phase: ZB-MR1  
 Signal #1 Info : 30M x 0.32mm x0.2 Signal #2 Info : 30M x 0.32mm x0.5µm

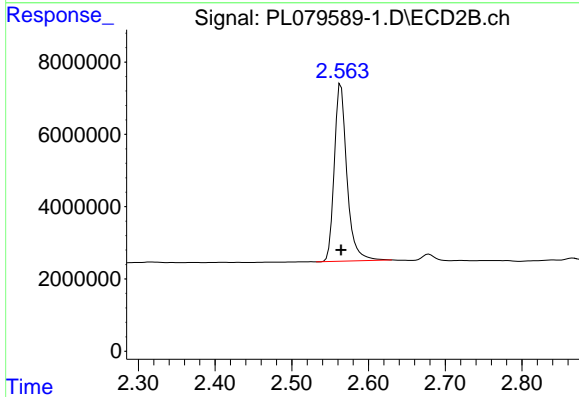




#1 Tetrachloro-m-xylene

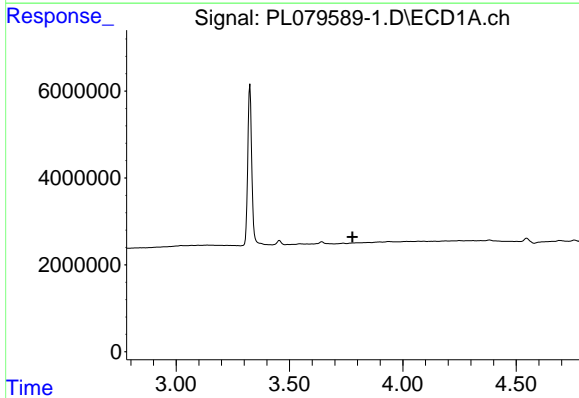
R.T.: 3.325 min  
 Delta R.T.: 0.004 min  
 Response: 54315398  
 Conc: 24.04 ng/ml

Instrument :  
 ECD\_L  
 ClientSampleId :



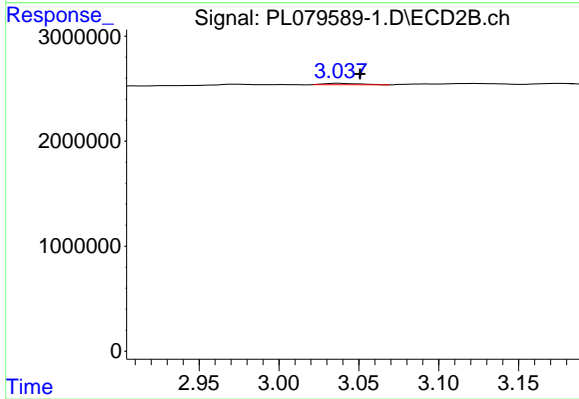
#1 Tetrachloro-m-xylene

R.T.: 2.564 min  
 Delta R.T.: 0.000 min  
 Response: 56148576  
 Conc: 20.63 ng/ml



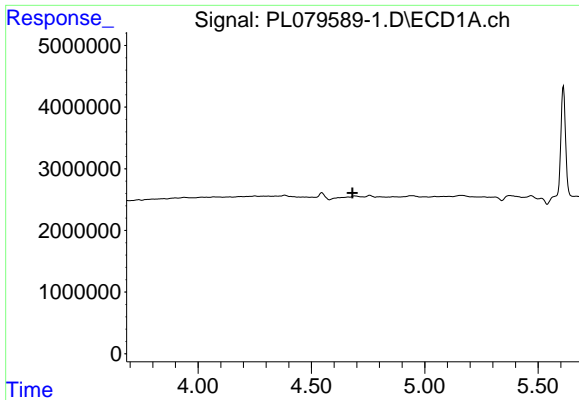
#2 alpha-BHC

R.T.: 0.000 min  
 Exp R.T. : 3.778 min  
 Response: 0  
 Conc: N.D.



#2 alpha-BHC

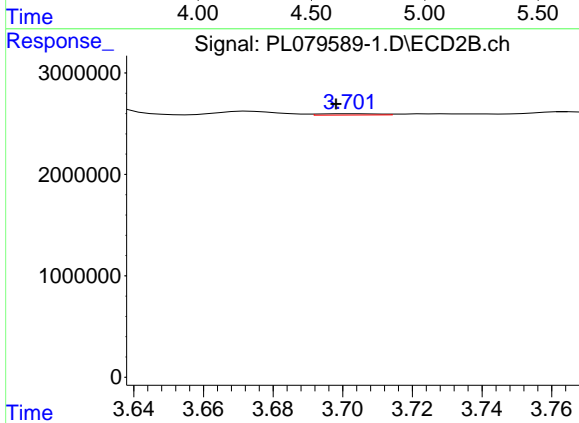
R.T.: 3.038 min  
 Delta R.T.: -0.013 min  
 Response: 201432  
 Conc: 0.05 ng/ml



#4 Heptachlor

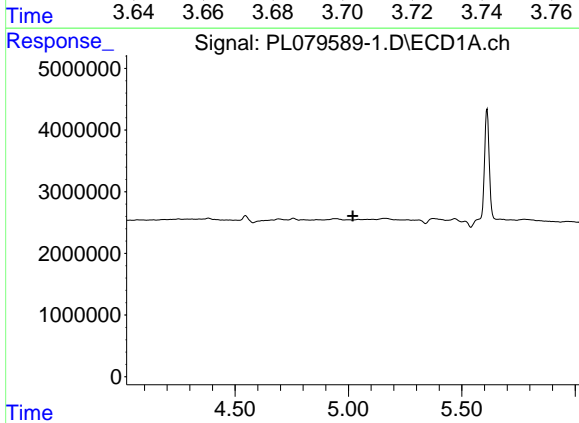
R.T.: 0.000 min  
 Exp R.T.: 4.681 min  
 Response: 0  
 Conc: N.D.

Instrument :  
 ECD\_L  
 ClientSampleId :



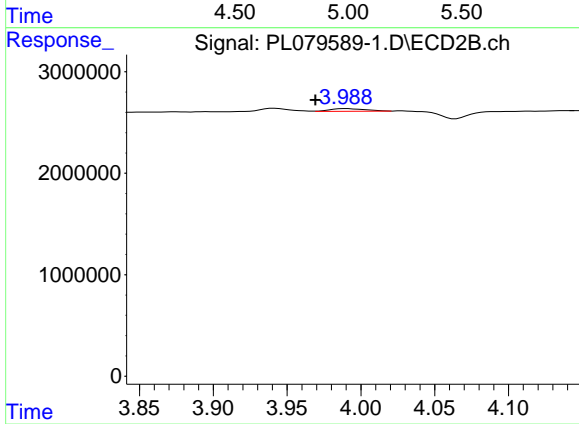
#4 Heptachlor

R.T.: 3.703 min  
 Delta R.T.: 0.005 min  
 Response: 158806  
 Conc: 0.04 ng/ml



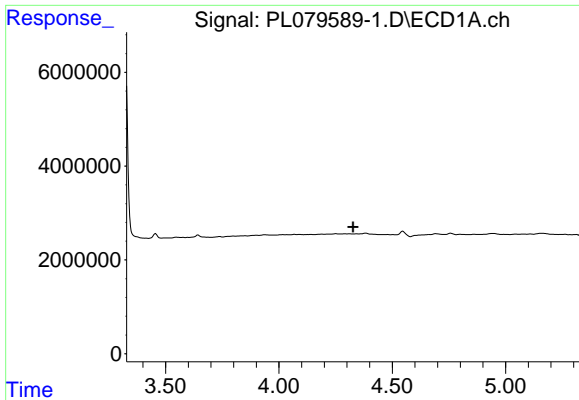
#5 Aldrin

R.T.: 0.000 min  
 Exp R.T.: 5.019 min  
 Response: 0  
 Conc: N.D.



#5 Aldrin

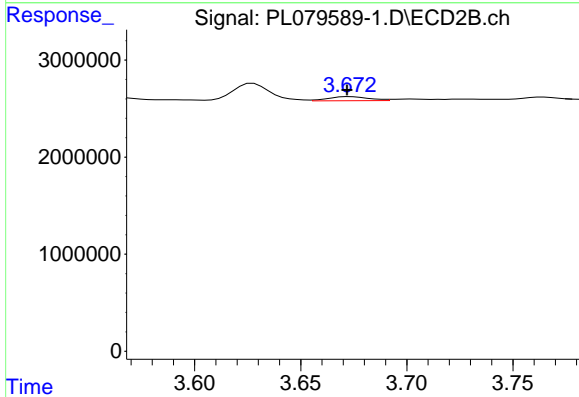
R.T.: 3.990 min  
 Delta R.T.: 0.020 min  
 Response: 432513  
 Conc: 0.12 ng/ml



#6 beta-BHC

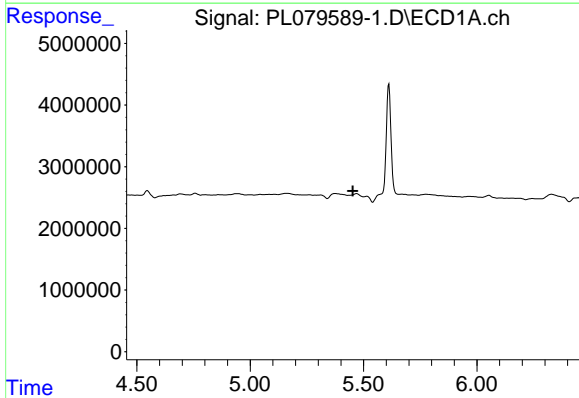
R.T.: 0.000 min  
 Exp R.T.: 4.327 min  
 Response: 0  
 Conc: N.D.

Instrument :  
 ECD\_L  
 ClientSampleId :



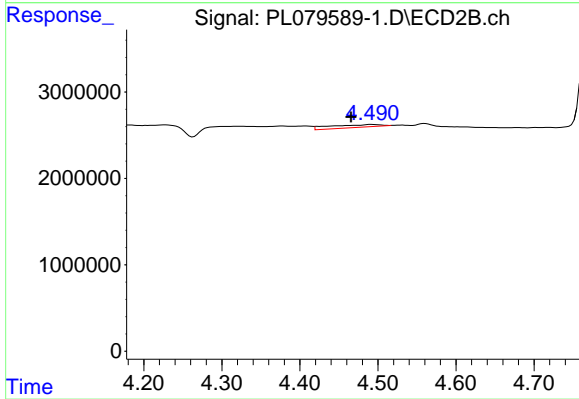
#6 beta-BHC

R.T.: 3.673 min  
 Delta R.T.: 0.001 min  
 Response: 554996  
 Conc: 0.37 ng/ml



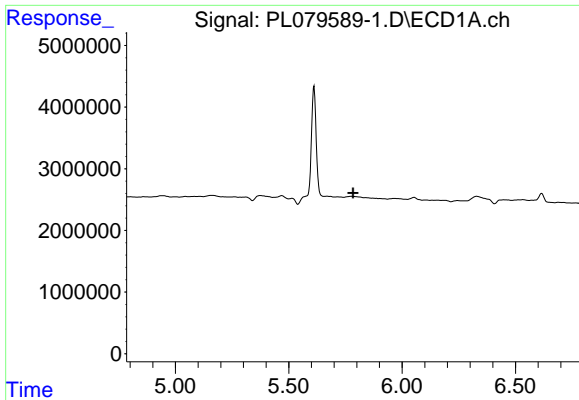
#8 Heptachlor epoxide

R.T.: 0.000 min  
 Exp R.T.: 5.452 min  
 Response: 0  
 Conc: N.D.



#8 Heptachlor epoxide

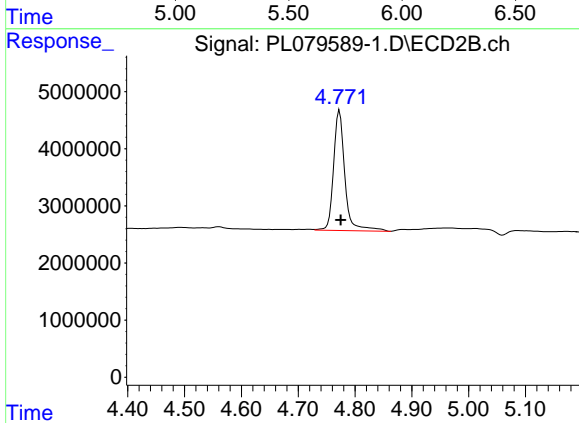
R.T.: 4.492 min  
 Delta R.T.: 0.026 min  
 Response: 1454233  
 Conc: 0.43 ng/ml



#11 alpha-Chlordane

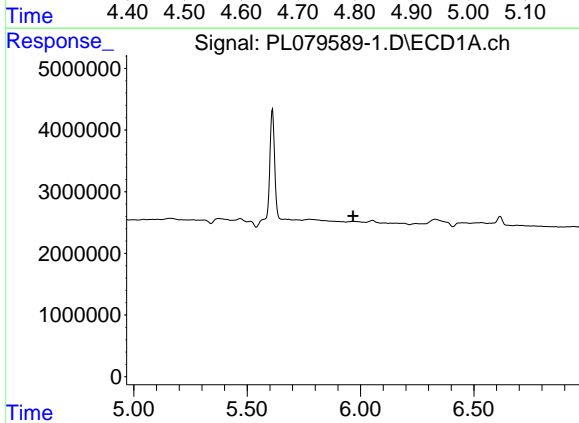
R.T.: 0.000 min  
 Exp R.T.: 5.784 min  
 Response: 0  
 Conc: N.D.

Instrument :  
 ECD\_L  
 ClientSampleId :



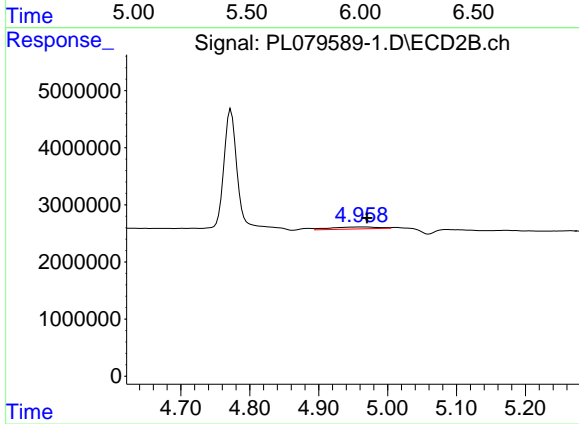
#11 alpha-Chlordane

R.T.: 4.773 min  
 Delta R.T.: -0.002 min  
 Response: 29059304  
 Conc: 8.68 ng/ml



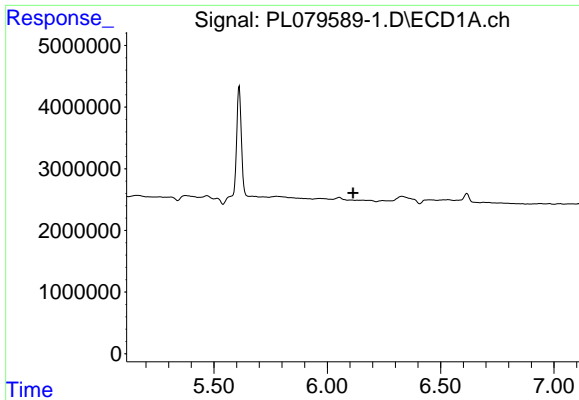
#12 4,4'-DDE

R.T.: 0.000 min  
 Exp R.T.: 5.968 min  
 Response: 0  
 Conc: N.D.



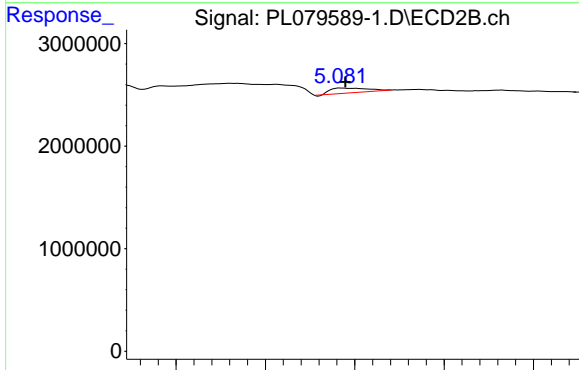
#12 4,4'-DDE

R.T.: 4.960 min  
 Delta R.T.: -0.010 min  
 Response: 1651557  
 Conc: 0.54 ng/ml

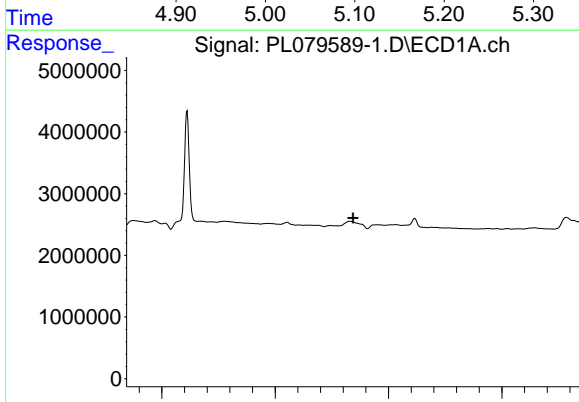


#13 Dieldrin  
 R.T.: 0.000 min  
 Exp R.T. : 6.114 min  
 Response: 0  
 Conc: N.D.

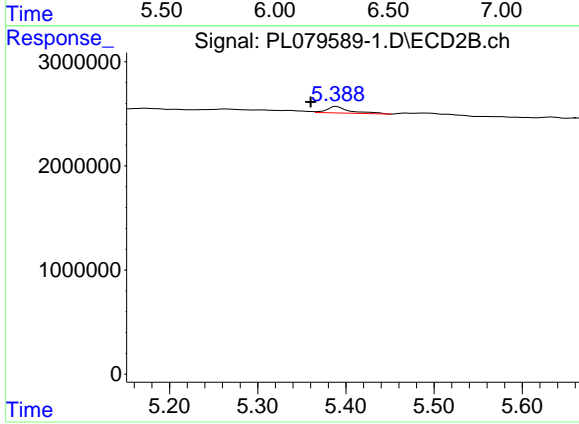
Instrument :  
 ECD\_L  
 ClientSampleId :



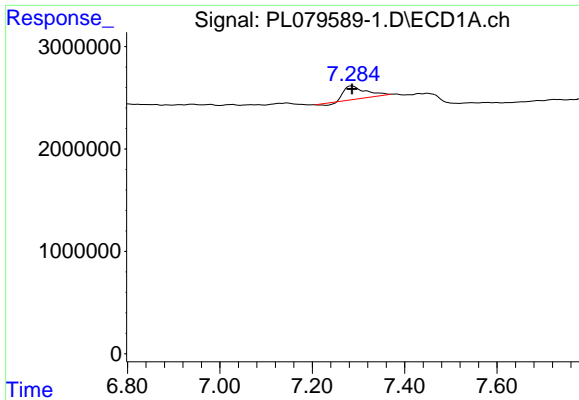
#13 Dieldrin  
 R.T.: 5.085 min  
 Delta R.T.: -0.005 min  
 Response: 1418145  
 Conc: 0.42 ng/ml



#14 Endrin  
 R.T.: 0.000 min  
 Exp R.T. : 6.344 min  
 Response: 0  
 Conc: N.D.



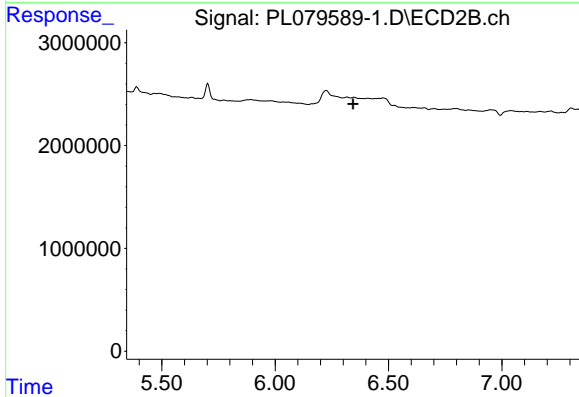
#14 Endrin  
 R.T.: 5.389 min  
 Delta R.T.: 0.029 min  
 Response: 1127404  
 Conc: 0.37 ng/ml



#20 Methoxychlor

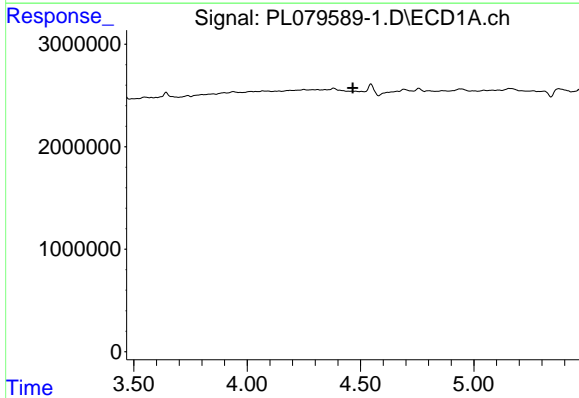
R.T.: 7.285 min  
 Delta R.T.: -0.002 min  
 Response: 3998015  
 Conc: 3.31 ng/ml

Instrument :  
 ECD\_L  
 ClientSampleId :



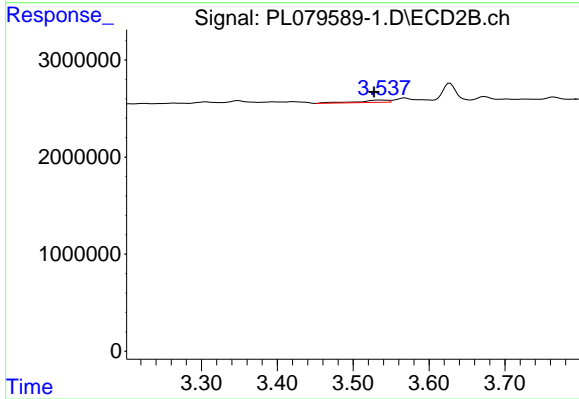
#20 Methoxychlor

R.T.: 0.000 min  
 Exp R.T. : 6.344 min  
 Response: 0  
 Conc: N.D.



#23 Chlordane-1

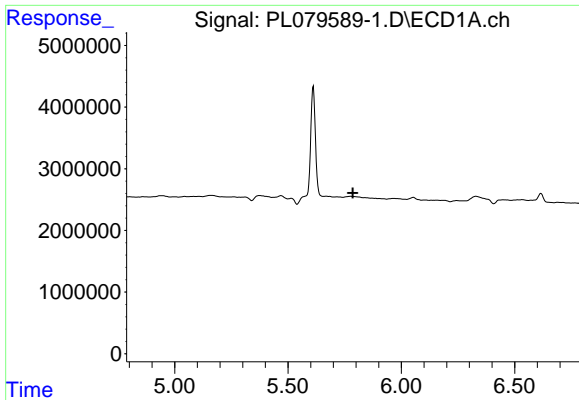
R.T.: 0.000 min  
 Exp R.T. : 4.465 min  
 Response: 0  
 Conc: N.D.



#23 Chlordane-1

R.T.: 3.539 min  
 Delta R.T.: 0.011 min  
 Response: 663885  
 Conc: 6.24 ng/ml

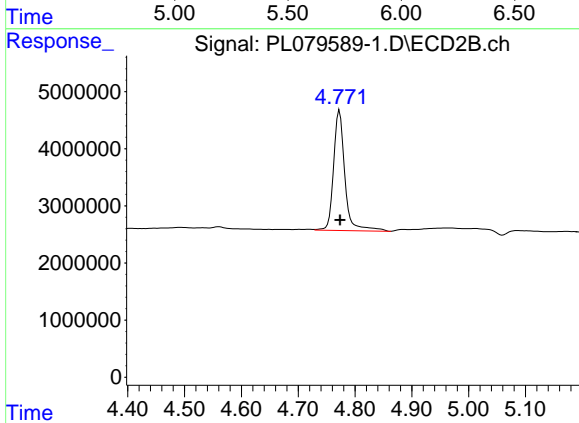




#26 Chlordane-4

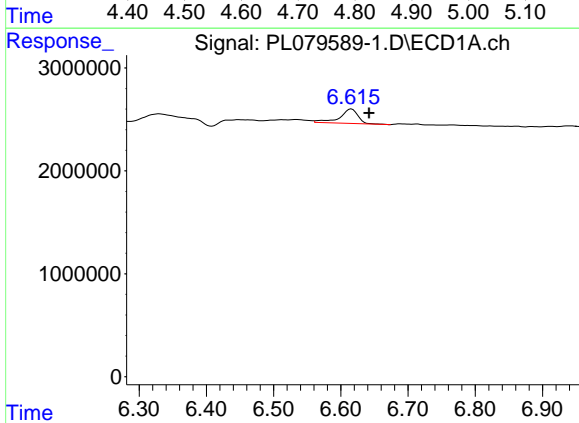
R.T.: 0.000 min  
 Exp R.T.: 5.786 min  
 Response: 0  
 Conc: N.D.

Instrument :  
 ECD\_L  
 ClientSampleId :



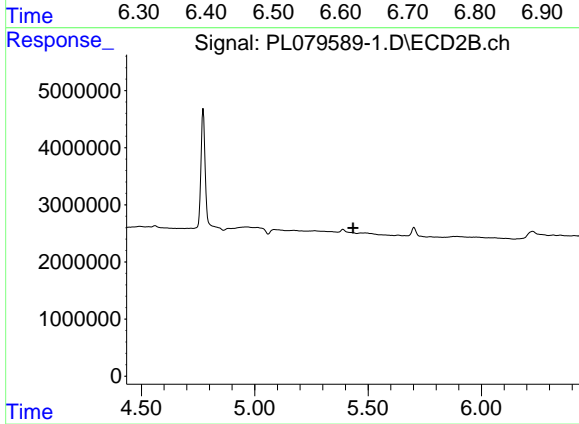
#26 Chlordane-4

R.T.: 4.773 min  
 Delta R.T.: 0.000 min  
 Response: 29059304  
 Conc: 80.19 ng/ml



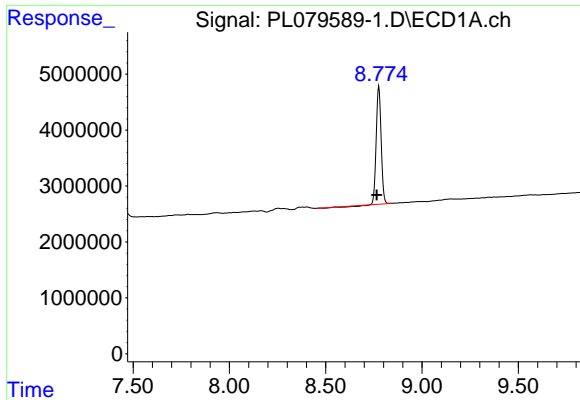
#27 Chlordane-5

R.T.: 6.616 min  
 Delta R.T.: -0.026 min  
 Response: 2655838  
 Conc: 33.21 ng/ml



#27 Chlordane-5

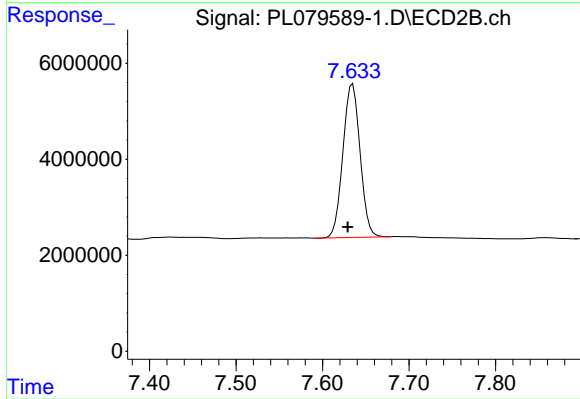
R.T.: 0.000 min  
 Exp R.T.: 5.434 min  
 Response: 0  
 Conc: N.D.



#28 Decachlorobiphenyl

R.T.: 8.776 min  
Delta R.T.: 0.011 min  
Response: 36751103  
Conc: 18.92 ng/ml

Instrument :  
ECD\_L  
ClientSampleId :



#28 Decachlorobiphenyl

R.T.: 7.635 min  
Delta R.T.: 0.006 min  
Response: 43824616  
Conc: 18.65 ng/ml