

Data Path : Z:\pestpcbsrv\HPCHEM1\ECD_L\Data\PL120619\
 Data File : PL054857.D
 Signal(s) : Signal #1: ECD1A.ch Signal #2: ECD2B.ch
 Acq On : 07 Dec 2019 01:50
 Operator : SG\AJ
 Sample : K6147-02RE
 Misc :
 ALS Vial : 35 Sample Multiplier: 1

Instrument :
 ECD_L
 ClientSampleId :
 I.BLK

Integration File signal 1: autoint1.e
 Integration File signal 2: autoint2.e
 Quant Time: Dec 07 04:17:11 2019
 Quant Method : Z:\pestpcbsrv\HPCHEM1\ECD_L\methods\PL112619.M
 Quant Title : GC Extractables
 QLast Update : Wed Nov 27 01:19:55 2019
 Response via : Initial Calibration
 Integrator: ChemStation

Volume Inj. : 1 µl
 Signal #1 Phase : ZB-MR2 Signal #2 Phase: ZB-MR1
 Signal #1 Info : 30M x 0.32mm x0.2 Signal #2 Info : 30M x 0.32mm x0.5µm

Compound	RT#1	RT#2	Resp#1	Resp#2	ng/ml	ng/ml

System Monitoring Compounds						
1) SA Tetrachlo...	3.537	4.050	144.8E6	38956045	12.448	15.266
28) SA Decachlor...	8.317	9.149	134.5E6	35457683	14.041	14.790
Target Compounds						
4) MA Heptachlor	4.577	0.000	12267863	0	0.696	N.D. #
5) MB Aldrin	4.824	5.564f	-10190341	5415226	N.D.	1.943
8) B Heptachlo...	5.288f	5.919	11006377	27222392	0.728	10.897 #
9) A Endosulfan I	5.627f	0.000	6517833	0	0.478	N.D. #
10) B gamma-Chl...	5.515f	6.178	130.9E6	16755495	8.629	6.360 #
11) B alpha-Chl...	0.000	6.237	0	7415880	N.D.	2.824 #
12) B 4,4'-DDE	5.718	6.392	86939533	38209815	6.534	15.436 #
13) MA Dieldrin	5.845	6.535	195.5E6	5885023	13.786	2.312 #
14) MA Endrin	6.106	6.754	-39850411	27537046	N.D.	12.430
15) B Endosulfa...	6.370f	0.000	17694292	0	1.462	N.D. #
16) A 4,4'-DDD	6.235	6.890	3540506	30202113	0.362	15.730 #
17) MA 4,4'-DDT	6.475	7.182	292.1E6	11981520	27.881	6.047 #
18) B Endrin al...	6.568	7.103	12227918	4790133	1.235	2.444 #
19) B Endosulfa...	6.761	0.000	19235397	0	1.796	N.D. #
20) A Methoxychlor	7.009f	0.000	68497304	0	13.667	N.D. #
21) B Endrin ke...	7.285f	0.000	12403202	0	1.141	N.D. #
22) Mirex	7.454	8.252	64384082	17041679	7.931	9.860
23) Chlordane-1	4.420	0.000	8203343	0	20.787	N.D. #
25) Chlordane-3	5.515f	6.178	130.9E6	16755495	101.898	53.980 #
26) Chlordane-4	0.000	6.237	0	7415880	N.D.	19.708 #
27) Chlordane-5	6.423f	7.063f	26929860	3526982	71.527	52.316 #

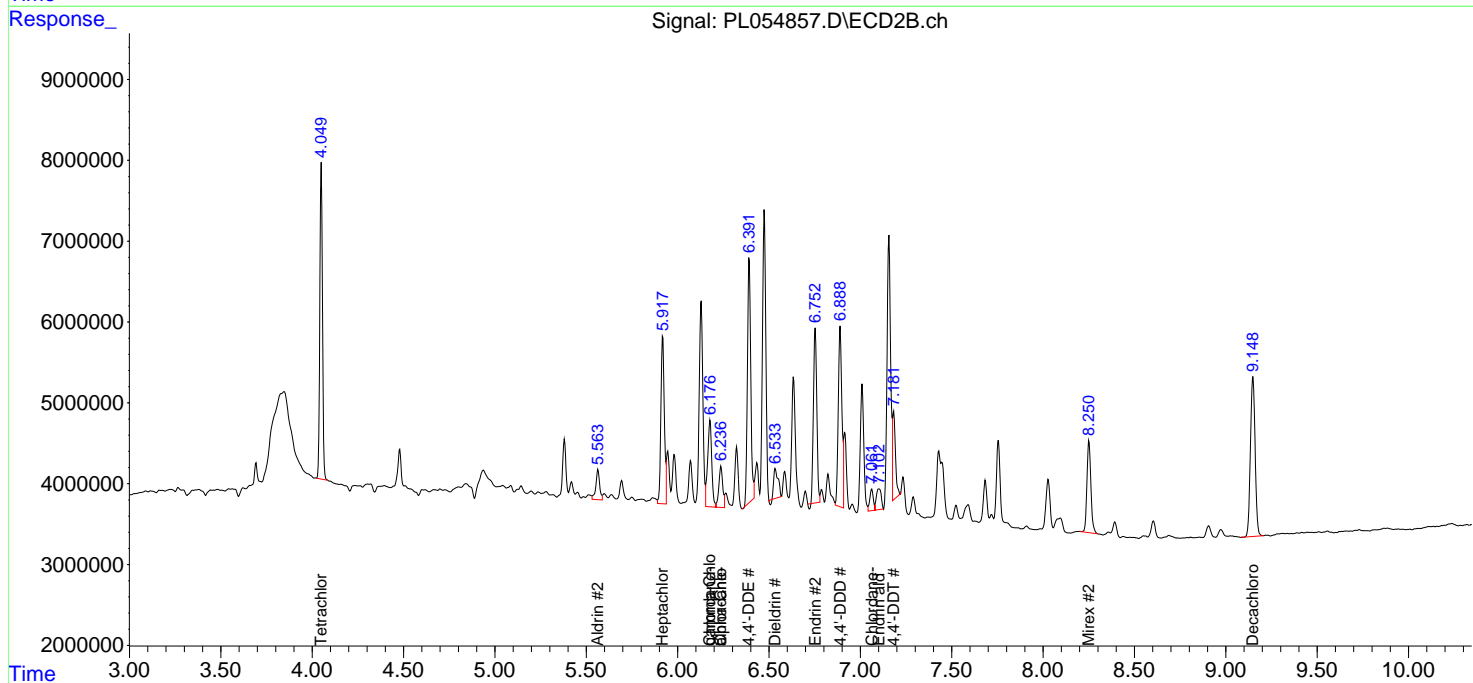
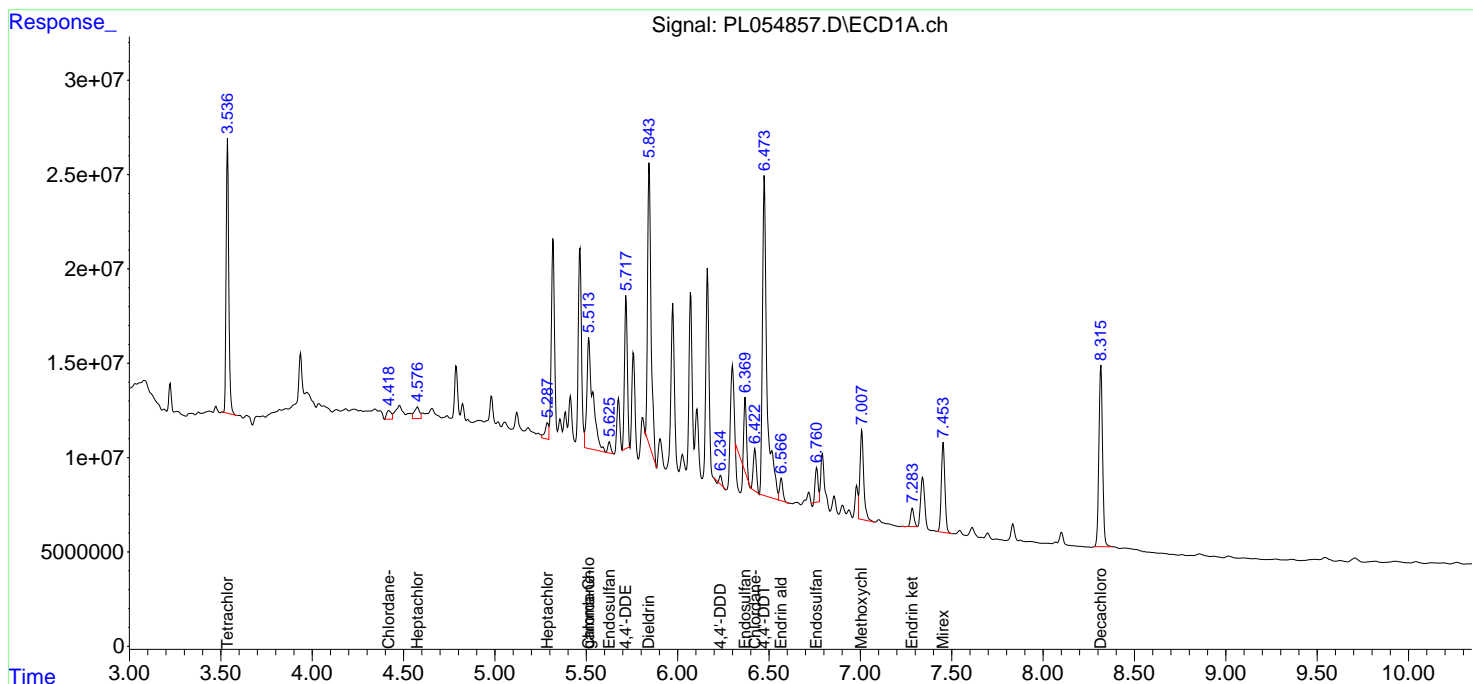
(f)=RT Delta > 1/2 Window (#)=Amounts differ by > 25% (m)=manual int.

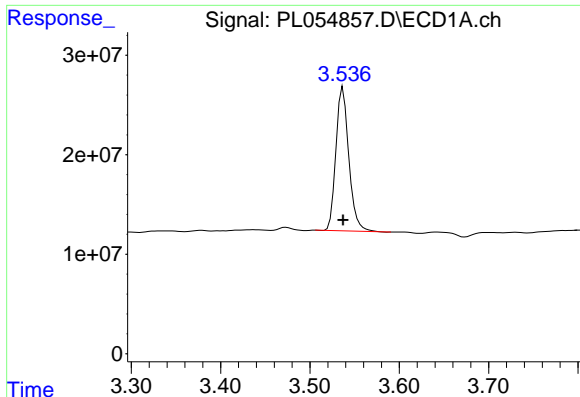
Data Path : Z:\pestpcbsrv\HPCHEM1\ECD_L\Data\PL120619\
 Data File : PL054857.D
 Signal(s) : Signal #1: ECD1A.ch Signal #2: ECD2B.ch
 Acq On : 07 Dec 2019 01:50
 Operator : SG\AJ
 Sample : K6147-02RE
 Misc :
 ALS Vial : 35 Sample Multiplier: 1

Instrument :
 ECD_L
 ClientSampled :
 I.BLK

Integration File signal 1: autoint1.e
 Integration File signal 2: autoint2.e
 Quant Time: Dec 07 04:17:11 2019
 Quant Method : Z:\pestpcbsrv\HPCHEM1\ECD_L\methods\PL112619.M
 Quant Title : GC Extractables
 QLast Update : Wed Nov 27 01:19:55 2019
 Response via : Initial Calibration
 Integrator: ChemStation

Volume Inj. : 1 µl
 Signal #1 Phase : ZB-MR2 Signal #2 Phase: ZB-MR1
 Signal #1 Info : 30M x 0.32mm x0.2 Signal #2 Info : 30M x 0.32mm x0.5µm

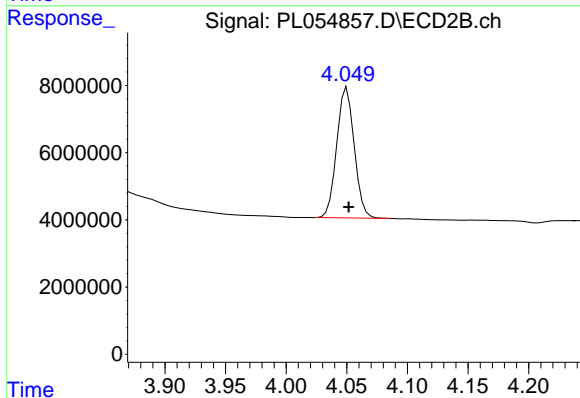




#1 Tetrachloro-m-xylene

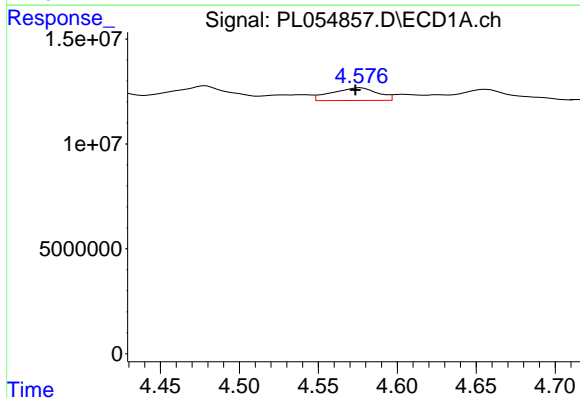
R.T.: 3.537 min
 Delta R.T.: 0.000 min
 Response: 144825178
 Conc: 12.45 ng/ml

Instrument :
 ECD_L
 ClientSampleId :
 I.BLK



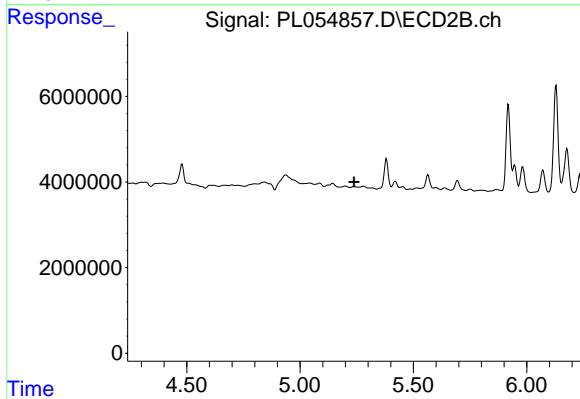
#1 Tetrachloro-m-xylene

R.T.: 4.050 min
 Delta R.T.: -0.001 min
 Response: 38956045
 Conc: 15.27 ng/ml



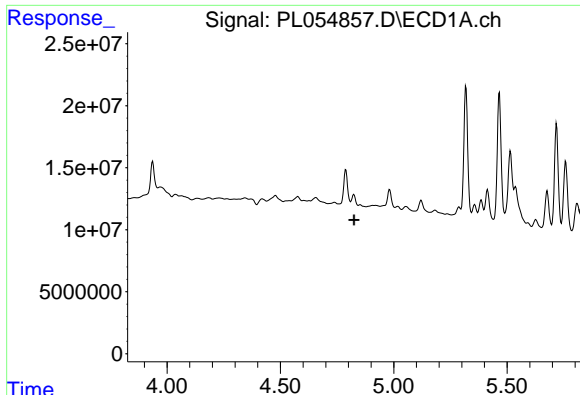
#4 Heptachlor

R.T.: 4.577 min
 Delta R.T.: 0.003 min
 Response: 12267863
 Conc: 0.70 ng/ml



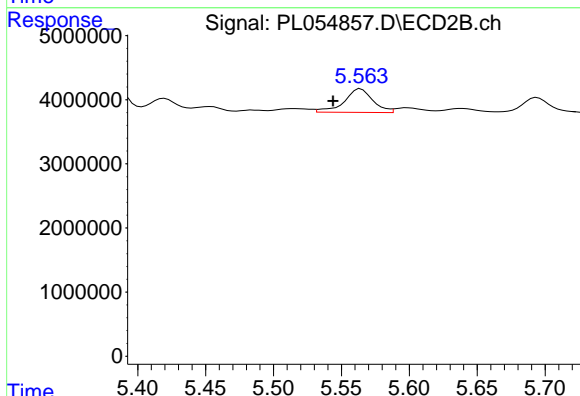
#4 Heptachlor

R.T.: 0.000 min
 Exp R.T. : 5.238 min
 Response: 0
 Conc: N.D.

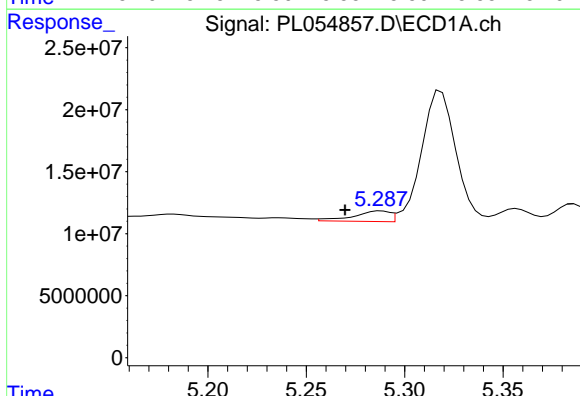


#5 Aldrin
 R.T.: 4.824 min
 Delta R.T.: 0.000 min
 Response: -10190341
 Conc: N.D.

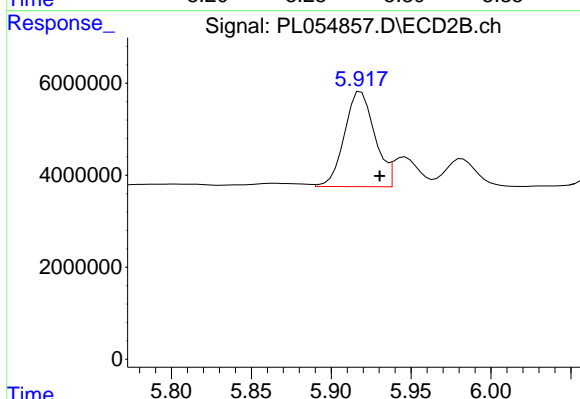
Instrument :
 ECD_L
 ClientSampled :
 I.BLK



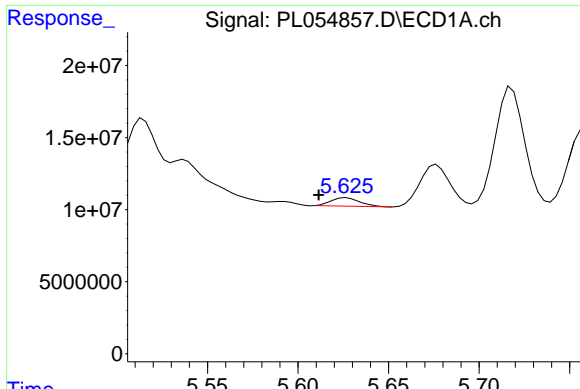
#5 Aldrin
 R.T.: 5.564 min
 Delta R.T.: 0.020 min
 Response: 5415226
 Conc: 1.94 ng/ml



#8 Heptachlor epoxide
 R.T.: 5.288 min
 Delta R.T.: 0.018 min
 Response: 11006377
 Conc: 0.73 ng/ml

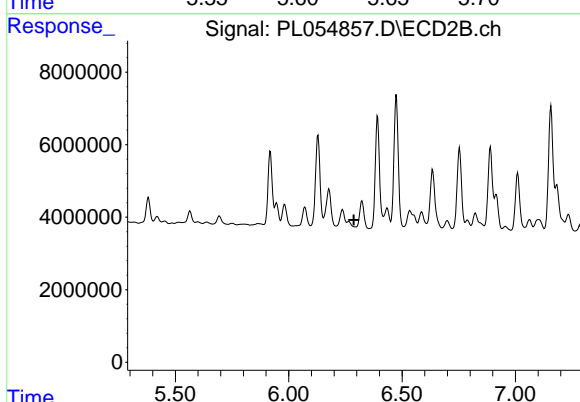


#8 Heptachlor epoxide
 R.T.: 5.919 min
 Delta R.T.: -0.012 min
 Response: 27222392
 Conc: 10.90 ng/ml

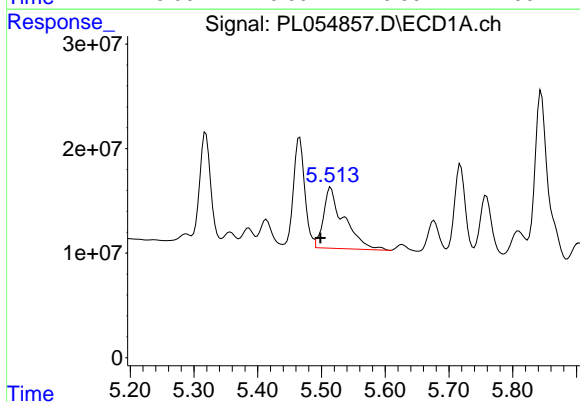


#9 Endosulfan I
 R.T.: 5.627 min
 Delta R.T.: 0.015 min
 Response: 6517833
 Conc: 0.48 ng/ml

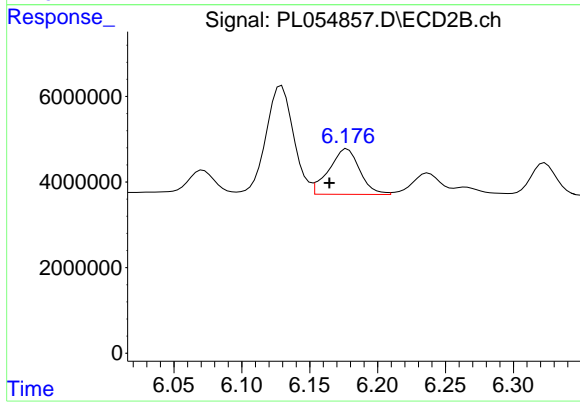
Instrument :
 ECD_L
 ClientSampled :
 I.BLK



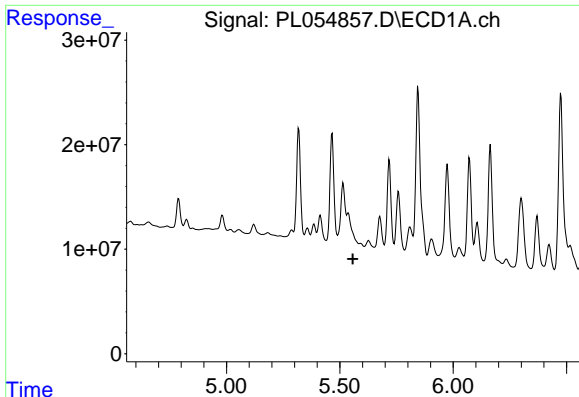
#9 Endosulfan I
 R.T.: 0.000 min
 Exp R.T. : 6.288 min
 Response: 0
 Conc: N.D.



#10 gamma-Chlordane
 R.T.: 5.515 min
 Delta R.T.: 0.016 min
 Response: 130850756
 Conc: 8.63 ng/ml



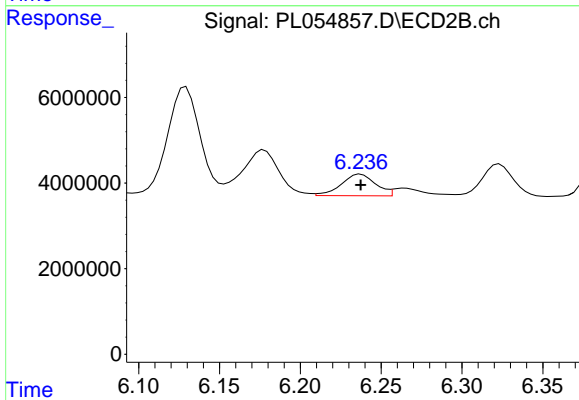
#10 gamma-Chlordane
 R.T.: 6.178 min
 Delta R.T.: 0.013 min
 Response: 16755495
 Conc: 6.36 ng/ml



#11 alpha-Chlordane

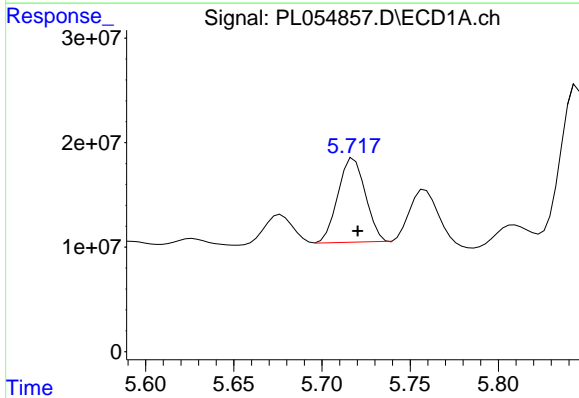
R.T.: 0.000 min
 Exp R.T.: 5.557 min
 Response: 0
 Conc: N.D.

Instrument :
 ECD_L
 ClientSampleId :
 I.BLK



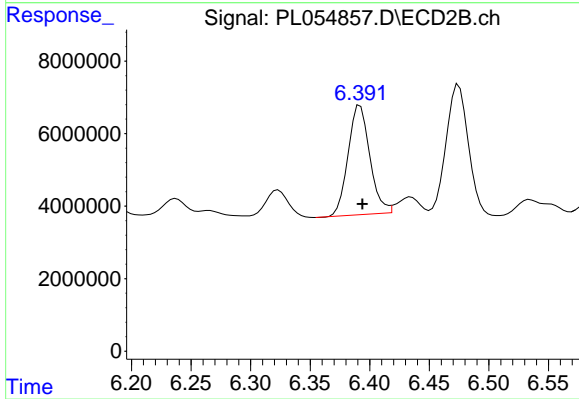
#11 alpha-Chlordane

R.T.: 6.237 min
 Delta R.T.: 0.000 min
 Response: 7415880
 Conc: 2.82 ng/ml



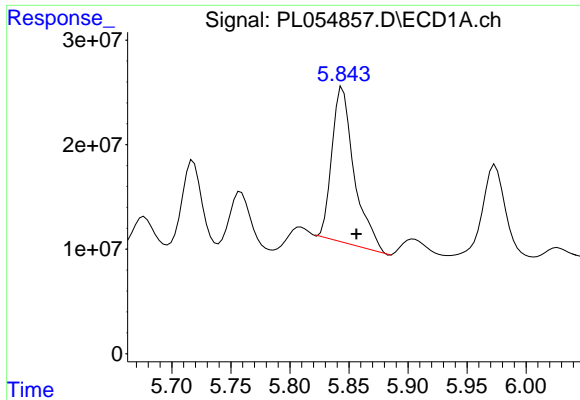
#12 4,4'-DDE

R.T.: 5.718 min
 Delta R.T.: -0.002 min
 Response: 86939533
 Conc: 6.53 ng/ml



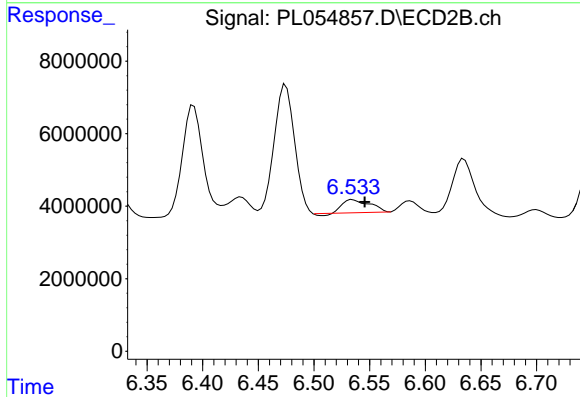
#12 4,4'-DDE

R.T.: 6.392 min
 Delta R.T.: -0.002 min
 Response: 38209815
 Conc: 15.44 ng/ml

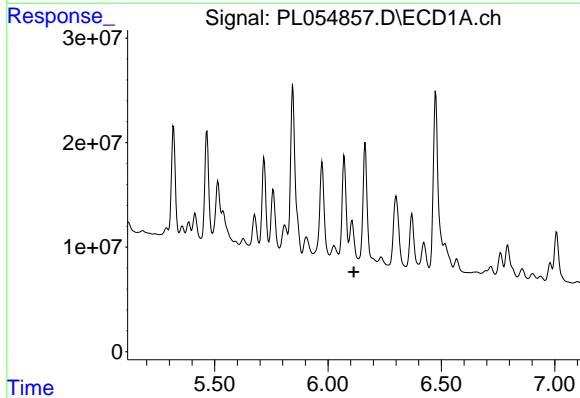


#13 Dieldrin
 R.T.: 5.845 min
 Delta R.T.: -0.011 min
 Response: 195500562
 Conc: 13.79 ng/ml

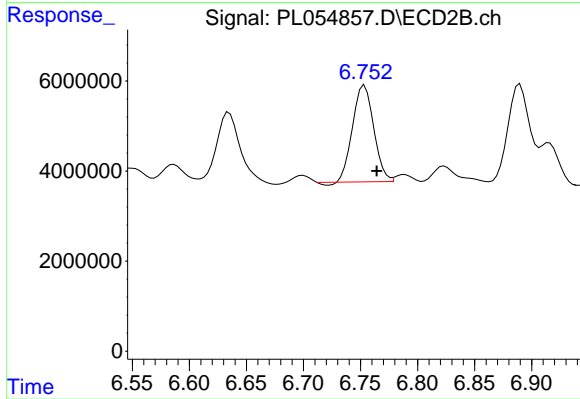
Instrument :
 ECD_L
 ClientSampled :
 I.BLK



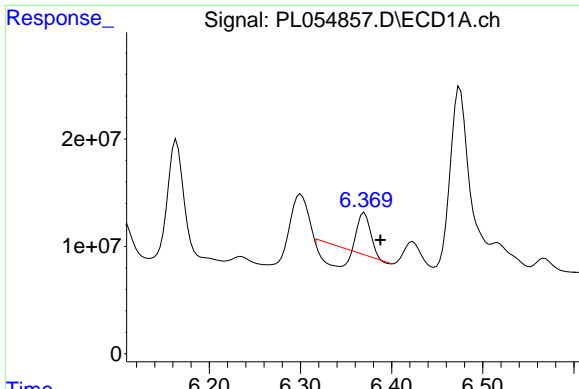
#13 Dieldrin
 R.T.: 6.535 min
 Delta R.T.: -0.011 min
 Response: 5885023
 Conc: 2.31 ng/ml



#14 Endrin
 R.T.: 6.106 min
 Delta R.T.: -0.008 min
 Response: -39850411
 Conc: N.D.

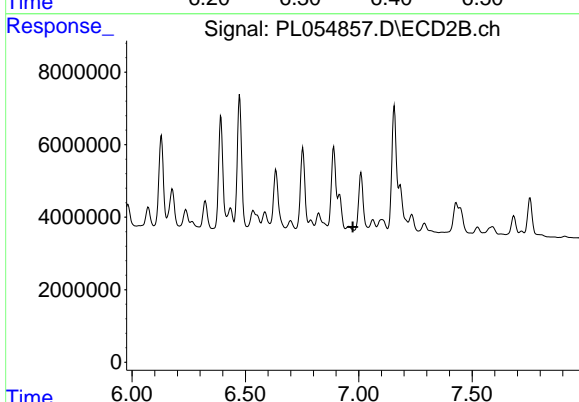


#14 Endrin
 R.T.: 6.754 min
 Delta R.T.: -0.011 min
 Response: 27537046
 Conc: 12.43 ng/ml

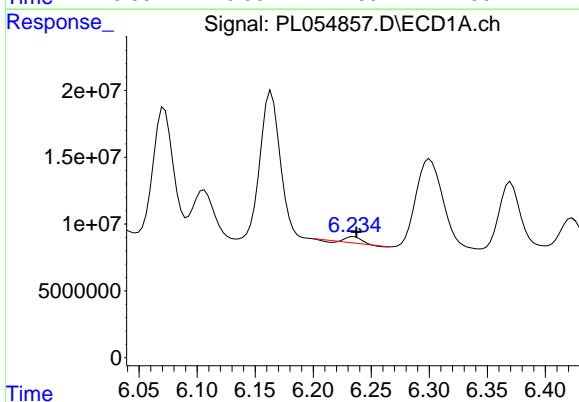


#15 Endosulfan II
 R.T.: 6.370 min
 Delta R.T.: -0.017 min
 Response: 17694292
 Conc: 1.46 ng/ml

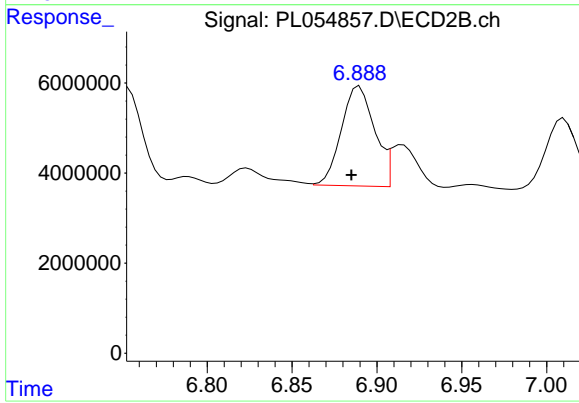
Instrument :
 ECD_L
 ClientSampled :
 I.BLK



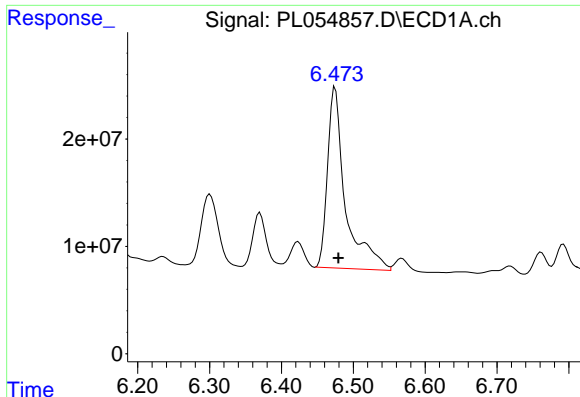
#15 Endosulfan II
 R.T.: 0.000 min
 Exp R.T. : 6.974 min
 Response: 0
 Conc: N.D.



#16 4,4'-DDD
 R.T.: 6.235 min
 Delta R.T.: -0.002 min
 Response: 3540506
 Conc: 0.36 ng/ml



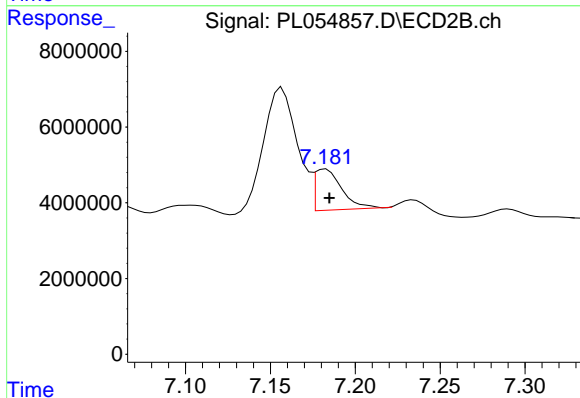
#16 4,4'-DDD
 R.T.: 6.890 min
 Delta R.T.: 0.005 min
 Response: 30202113
 Conc: 15.73 ng/ml



#17 4,4'-DDT

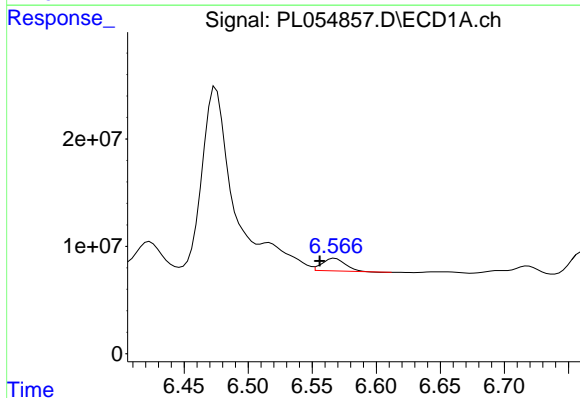
R.T.: 6.475 min
 Delta R.T.: -0.004 min
 Response: 292089126
 Conc: 27.88 ng/ml

Instrument :
 ECD_L
 ClientSampled :
 I.BLK



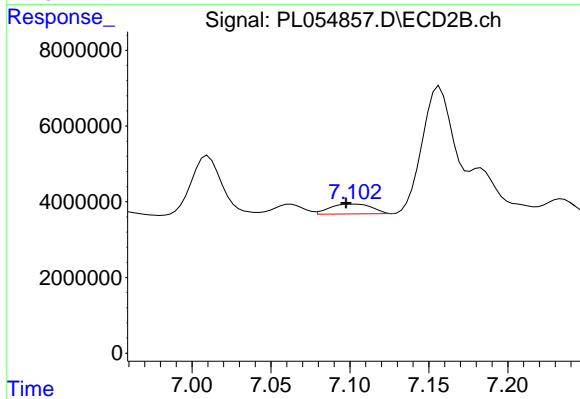
#17 4,4'-DDT

R.T.: 7.182 min
 Delta R.T.: -0.002 min
 Response: 11981520
 Conc: 6.05 ng/ml



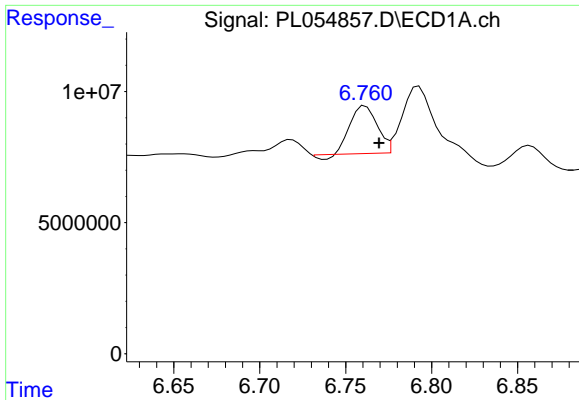
#18 Endrin aldehyde

R.T.: 6.568 min
 Delta R.T.: 0.012 min
 Response: 12227918
 Conc: 1.23 ng/ml



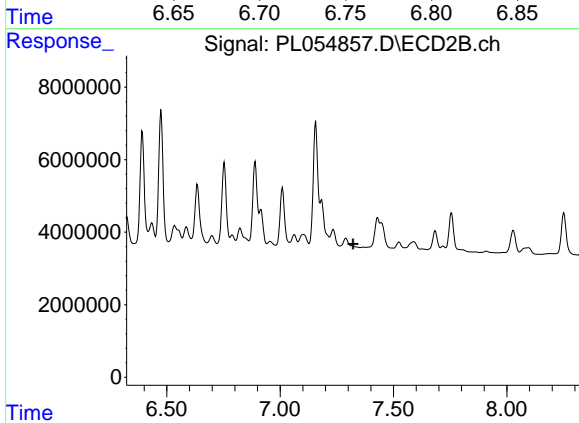
#18 Endrin aldehyde

R.T.: 7.103 min
 Delta R.T.: 0.005 min
 Response: 4790133
 Conc: 2.44 ng/ml

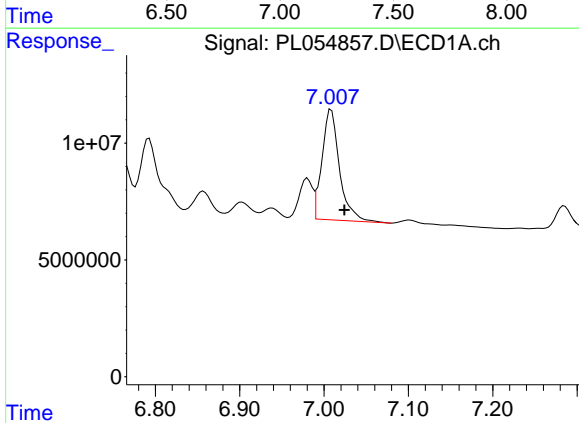


#19 Endosulfan Sulfate
 R.T.: 6.761 min
 Delta R.T.: -0.008 min
 Response: 19235397
 Conc: 1.80 ng/ml

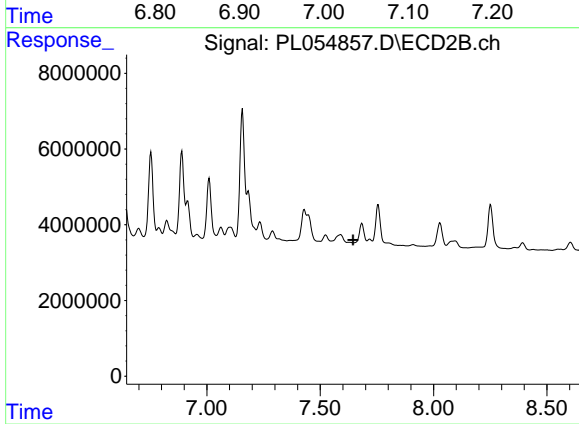
Instrument :
 ECD_L
 ClientSampleId :
 I.BLK



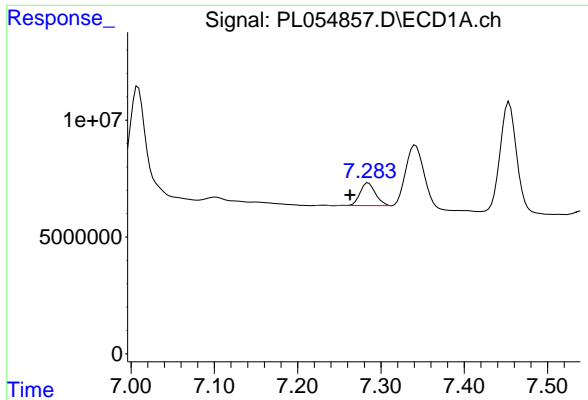
#19 Endosulfan Sulfate
 R.T.: 0.000 min
 Exp R.T. : 7.322 min
 Response: 0
 Conc: N.D.



#20 Methoxychlor
 R.T.: 7.009 min
 Delta R.T.: -0.016 min
 Response: 68497304
 Conc: 13.67 ng/ml

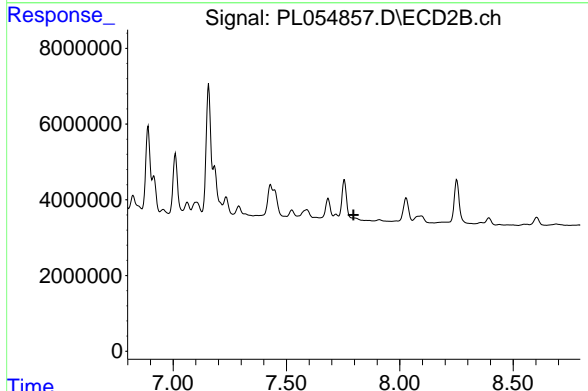


#20 Methoxychlor
 R.T.: 0.000 min
 Exp R.T. : 7.645 min
 Response: 0
 Conc: N.D.

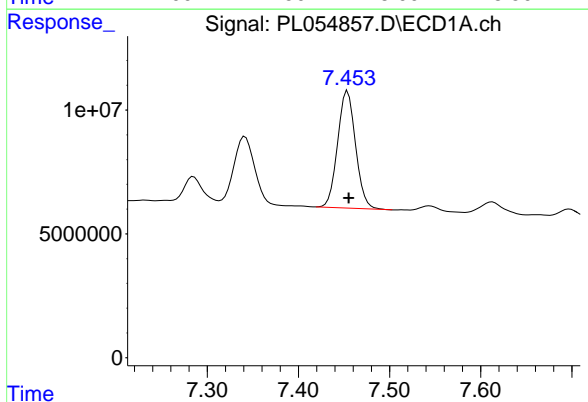


#21 Endrin ketone
 R.T.: 7.285 min
 Delta R.T.: 0.022 min
 Response: 12403202
 Conc: 1.14 ng/ml

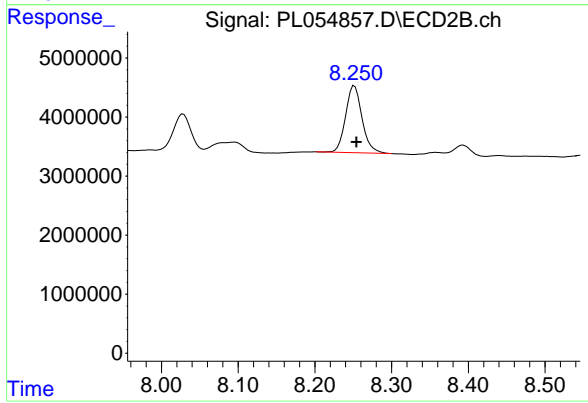
Instrument :
 ECD_L
 ClientSampled :
 I.BLK



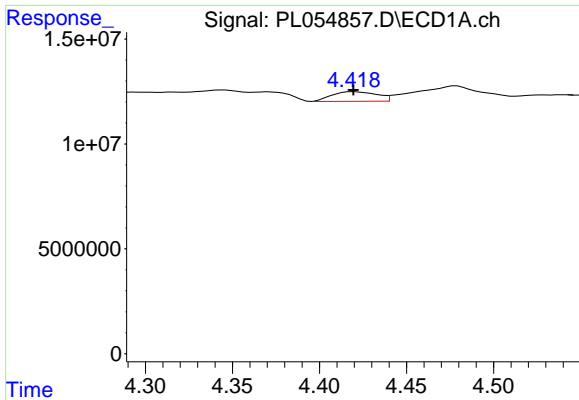
#21 Endrin ketone
 R.T.: 0.000 min
 Exp R.T. : 7.796 min
 Response: 0
 Conc: N.D.



#22 Mirex
 R.T.: 7.454 min
 Delta R.T.: -0.001 min
 Response: 64384082
 Conc: 7.93 ng/ml

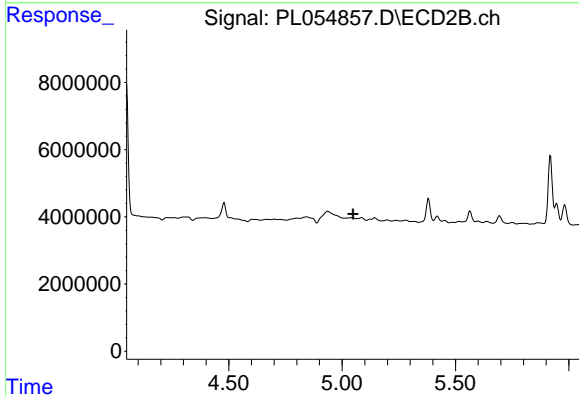


#22 Mirex
 R.T.: 8.252 min
 Delta R.T.: -0.003 min
 Response: 17041679
 Conc: 9.86 ng/ml

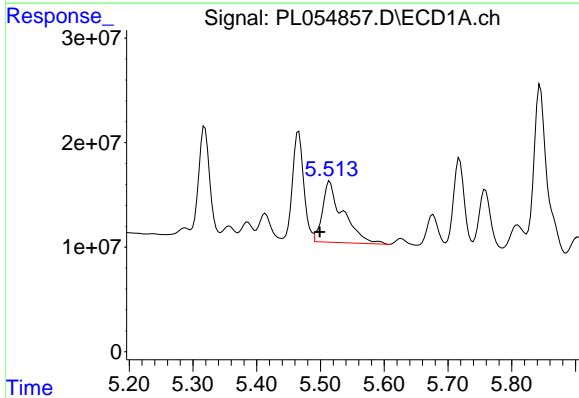


#23 Chlordane-1
 R.T.: 4.420 min
 Delta R.T.: 0.000 min
 Response: 8203343
 Conc: 20.79 ng/ml

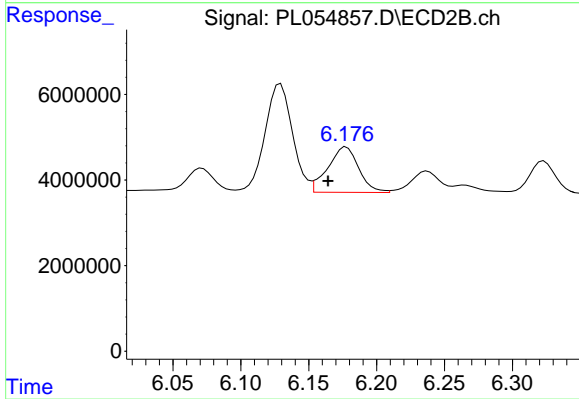
Instrument :
 ECD_L
 ClientSampled :
 I.BLK



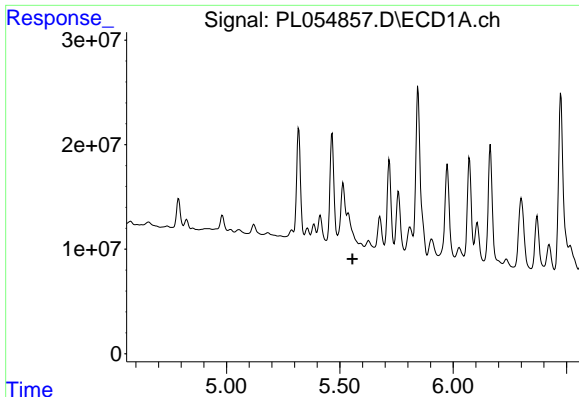
#23 Chlordane-1
 R.T.: 0.000 min
 Exp R.T. : 5.049 min
 Response: 0
 Conc: N.D.



#25 Chlordane-3
 R.T.: 5.515 min
 Delta R.T.: 0.016 min
 Response: 130850756
 Conc: 101.90 ng/ml



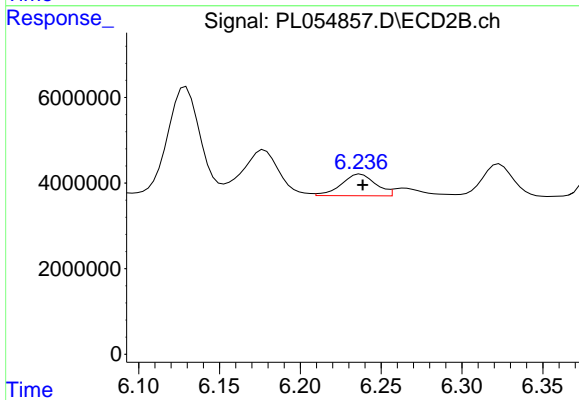
#25 Chlordane-3
 R.T.: 6.178 min
 Delta R.T.: 0.014 min
 Response: 16755495
 Conc: 53.98 ng/ml



#26 Chlordane-4

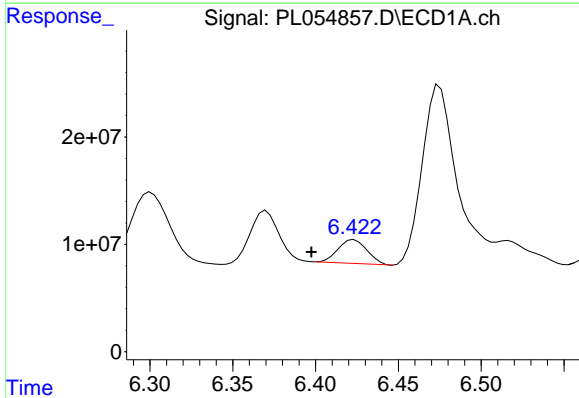
R.T.: 0.000 min
 Exp R.T.: 5.556 min
 Response: 0
 Conc: N.D.

Instrument :
 ECD_L
 ClientSampled :
 I.BLK



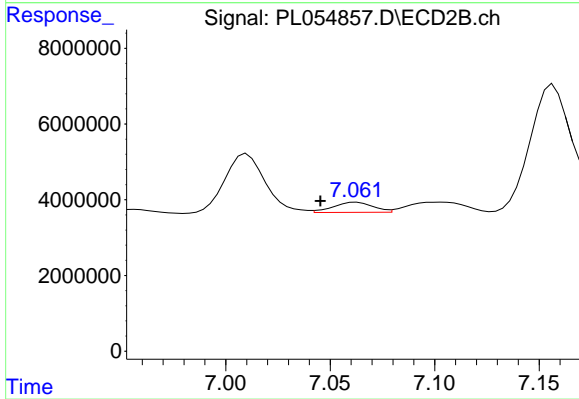
#26 Chlordane-4

R.T.: 6.237 min
 Delta R.T.: -0.001 min
 Response: 7415880
 Conc: 19.71 ng/ml



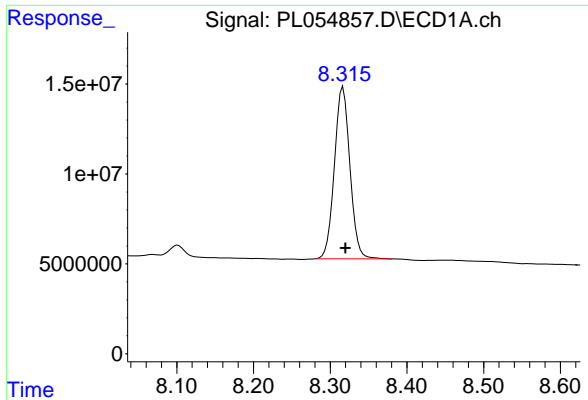
#27 Chlordane-5

R.T.: 6.423 min
 Delta R.T.: 0.026 min
 Response: 26929860
 Conc: 71.53 ng/ml



#27 Chlordane-5

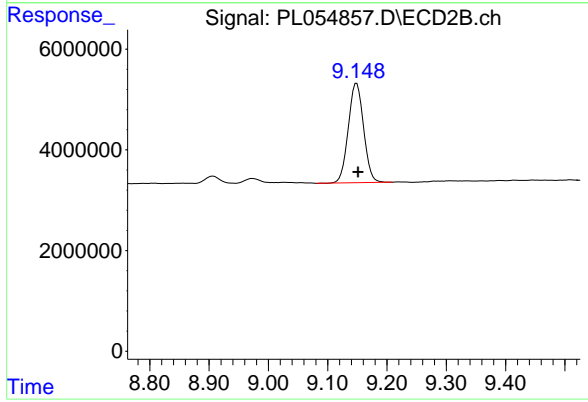
R.T.: 7.063 min
 Delta R.T.: 0.017 min
 Response: 3526982
 Conc: 52.32 ng/ml



#28 Decachlorobiphenyl

R.T.: 8.317 min
Delta R.T.: -0.003 min
Response: 134457738
Conc: 14.04 ng/ml

Instrument :
ECD_L
ClientSampleId :
I.BLK



#28 Decachlorobiphenyl

R.T.: 9.149 min
Delta R.T.: -0.003 min
Response: 35457683
Conc: 14.79 ng/ml