

Data Path : Z:\pestpcbsrv\HPCHEM1\ECD_L\Data\PL120619\
 Data File : PL054820.D
 Signal(s) : Signal #1: ECD1A.ch Signal #2: ECD2B.ch
 Acq On : 06 Dec 2019 12:14
 Operator : SG\AJ
 Sample : PB125280BL
 Misc :
 ALS Vial : 5 Sample Multiplier: 1

Instrument :
 ECD_L
 ClientSampleId :
 PB125280BL

Integration File signal 1: autoint1.e
 Integration File signal 2: autoint2.e
 Quant Time: Dec 07 00:04:06 2019
 Quant Method : Z:\pestpcbsrv\HPCHEM1\ECD_L\methods\PL112619.M
 Quant Title : GC Extractables
 QLast Update : Wed Nov 27 01:19:55 2019
 Response via : Initial Calibration
 Integrator: ChemStation

Volume Inj. : 1 µl
 Signal #1 Phase : ZB-MR2 Signal #2 Phase: ZB-MR1
 Signal #1 Info : 30M x 0.32mm x0.2 Signal #2 Info : 30M x 0.32mm x0.5µm

Compound	RT#1	RT#2	Resp#1	Resp#2	ng/ml	ng/ml

System Monitoring Compounds						
1) SA Tetrachlo...	3.542	4.051	235.0E6	54475004	20.198	21.348
28) SA Decachlor...	8.323	9.153	176.8E6	47593281	18.464	19.852

Target Compounds

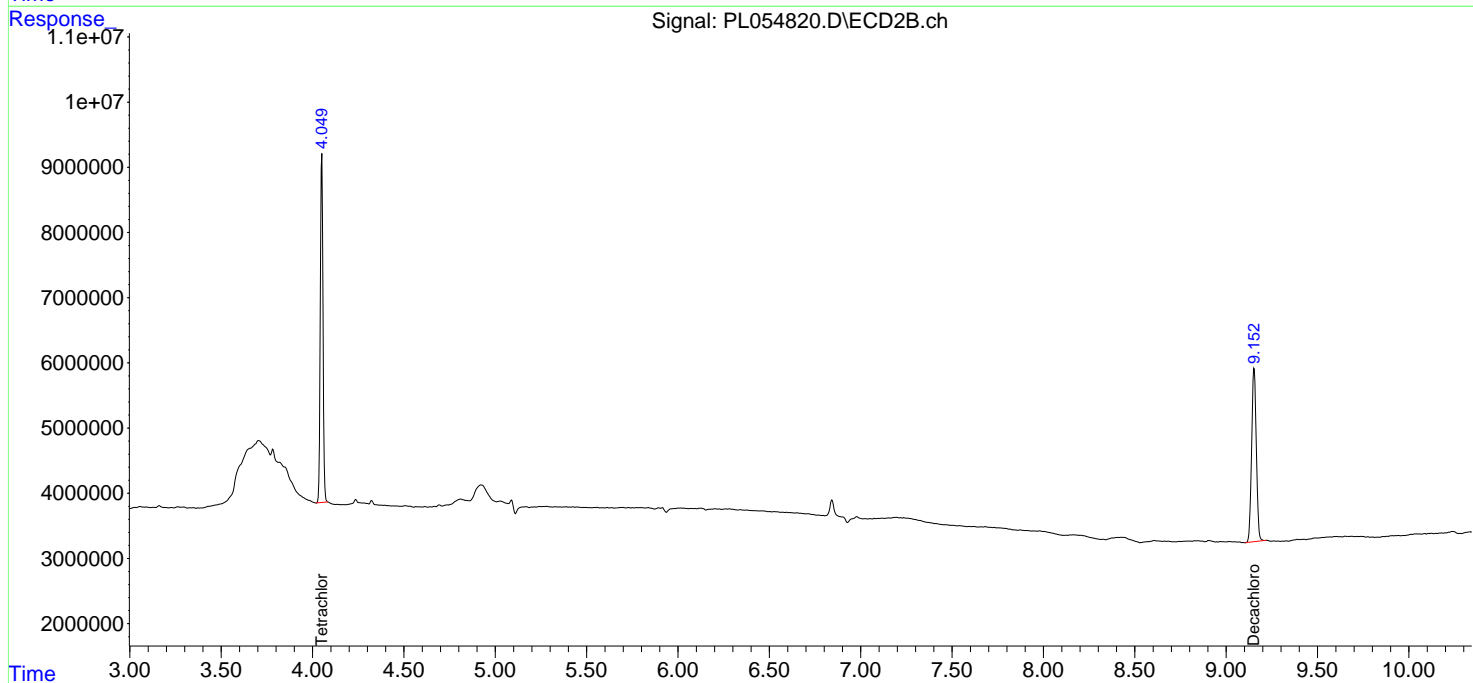
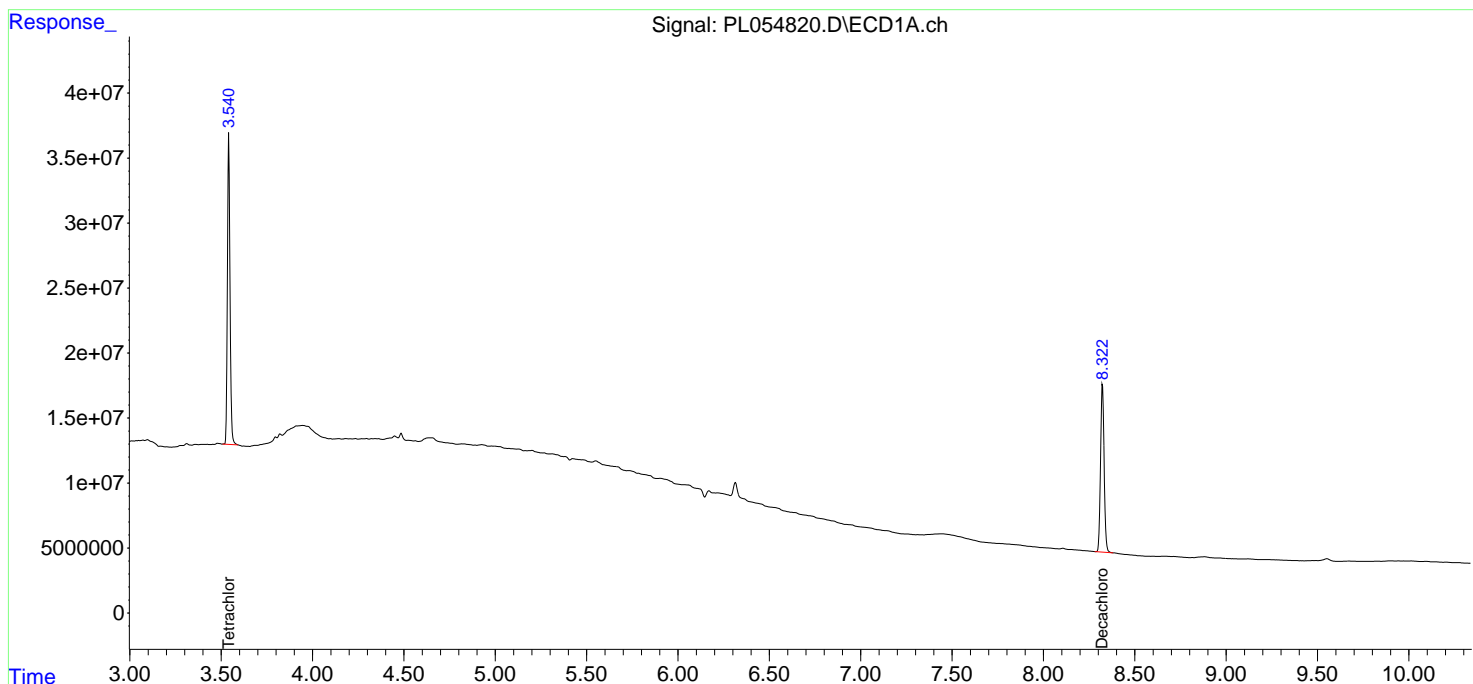
 (f)=RT Delta > 1/2 Window (#)=Amounts differ by > 25% (m)=manual int.

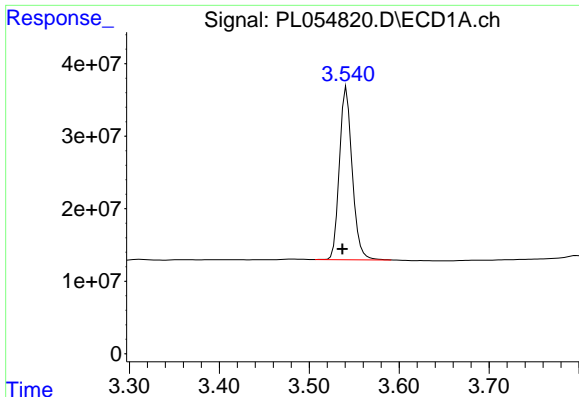
Data Path : Z:\pestpcbsrv\HPCHEM1\ECD_L\Data\PL120619\
 Data File : PL054820.D
 Signal(s) : Signal #1: ECD1A.ch Signal #2: ECD2B.ch
 Acq On : 06 Dec 2019 12:14
 Operator : SG\AJ
 Sample : PB125280BL
 Misc :
 ALS Vial : 5 Sample Multiplier: 1

Instrument :
 ECD_L
 ClientSampleId :
 PB125280BL

Integration File signal 1: autoint1.e
 Integration File signal 2: autoint2.e
 Quant Time: Dec 07 00:04:06 2019
 Quant Method : Z:\pestpcbsrv\HPCHEM1\ECD_L\methods\PL112619.M
 Quant Title : GC Extractables
 QLast Update : Wed Nov 27 01:19:55 2019
 Response via : Initial Calibration
 Integrator: ChemStation

Volume Inj. : 1 µl
 Signal #1 Phase : ZB-MR2 Signal #2 Phase: ZB-MR1
 Signal #1 Info : 30M x 0.32mm x0.2 Signal #2 Info : 30M x 0.32mm x0.5µm

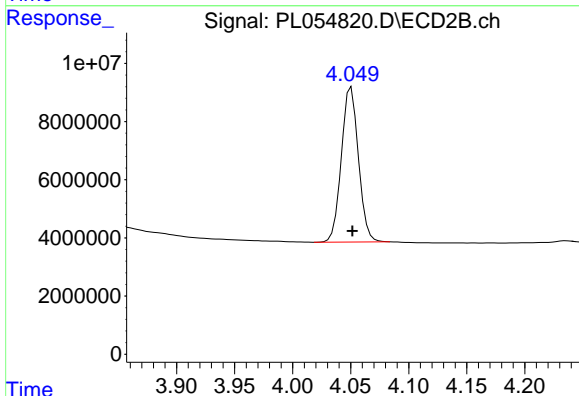




#1 Tetrachloro-m-xylene

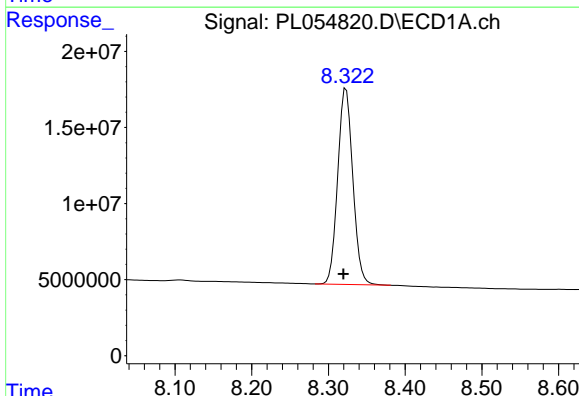
R.T.: 3.542 min
 Delta R.T.: 0.005 min
 Response: 234987566
 Conc: 20.20 ng/ml

Instrument :
 ECD_L
 ClientSampleId :
 PB125280BL



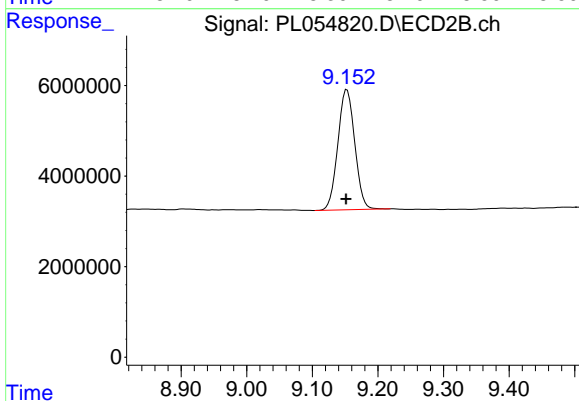
#1 Tetrachloro-m-xylene

R.T.: 4.051 min
 Delta R.T.: -0.001 min
 Response: 54475004
 Conc: 21.35 ng/ml



#28 Decachlorobiphenyl

R.T.: 8.323 min
 Delta R.T.: 0.003 min
 Response: 176808733
 Conc: 18.46 ng/ml



#28 Decachlorobiphenyl

R.T.: 9.153 min
 Delta R.T.: 0.001 min
 Response: 47593281
 Conc: 19.85 ng/ml