

Data Path : Z:\pestpcbsrv\HPCHEM1\ECD_L\Data\PL120718\
 Data File : PL042876.D
 Signal(s) : Signal #1: ECD1A.ch Signal #2: ECD2B.ch
 Acq On : 07 Dec 2018 12:32
 Operator : AJ\SJ
 Sample : J6233-04
 Misc :
 ALS Vial : 15 Sample Multiplier: 1

Instrument :
 ECD_L
 ClientSampleId :

Integration File signal 1: autoint1.e
 Integration File signal 2: autoint2.e
 Quant Time: Dec 07 13:09:17 2018
 Quant Method : Z:\pestpcbsrv\HPCHEM1\ECD_L\methods\PL120618.M
 Quant Title : GC Extractables
 QLast Update : Fri Dec 07 00:20:08 2018
 Response via : Initial Calibration
 Integrator: ChemStation

Volume Inj. : 2 µl
 Signal #1 Phase : ZB-MR1 Signal #2 Phase: ZB-MR2
 Signal #1 Info : 30M x 0.32mm x0.5 Signal #2 Info : 30M x 0.32mm x0.25µm

Compound	RT#1	RT#2	Resp#1	Resp#2	ng/ml	ng/ml

System Monitoring Compounds						
1) SA Tetrachlo...	3.465	4.099	125.9E6	64865871	20.529	21.885
28) SA Decachlor...	8.200	9.226	103.9E6	44740087	15.913	17.152
Target Compounds						
6) B beta-BHC	4.398f	0.000	5387537	0	1.461	N.D. #
7) B delta-BHC	0.000	5.147f	0	7486190	N.D.	1.742 #
8) B Heptachlo...	0.000	5.992	0	3321536	N.D.	0.876 #
10) B gamma-Chl...	0.000	6.233	0	657986	N.D.	0.179 #
11) B alpha-Chl...	0.000	6.233f	0	657986	N.D.	0.183 #
14) MA Endrin	6.064f	0.000	725717	0	0.101	N.D. #
23) Chlordane-1	4.398	5.147	5387537	7486190	20.050	52.968 #
25) Chlordane-3	0.000	6.233	0	657986	N.D.	1.340 #

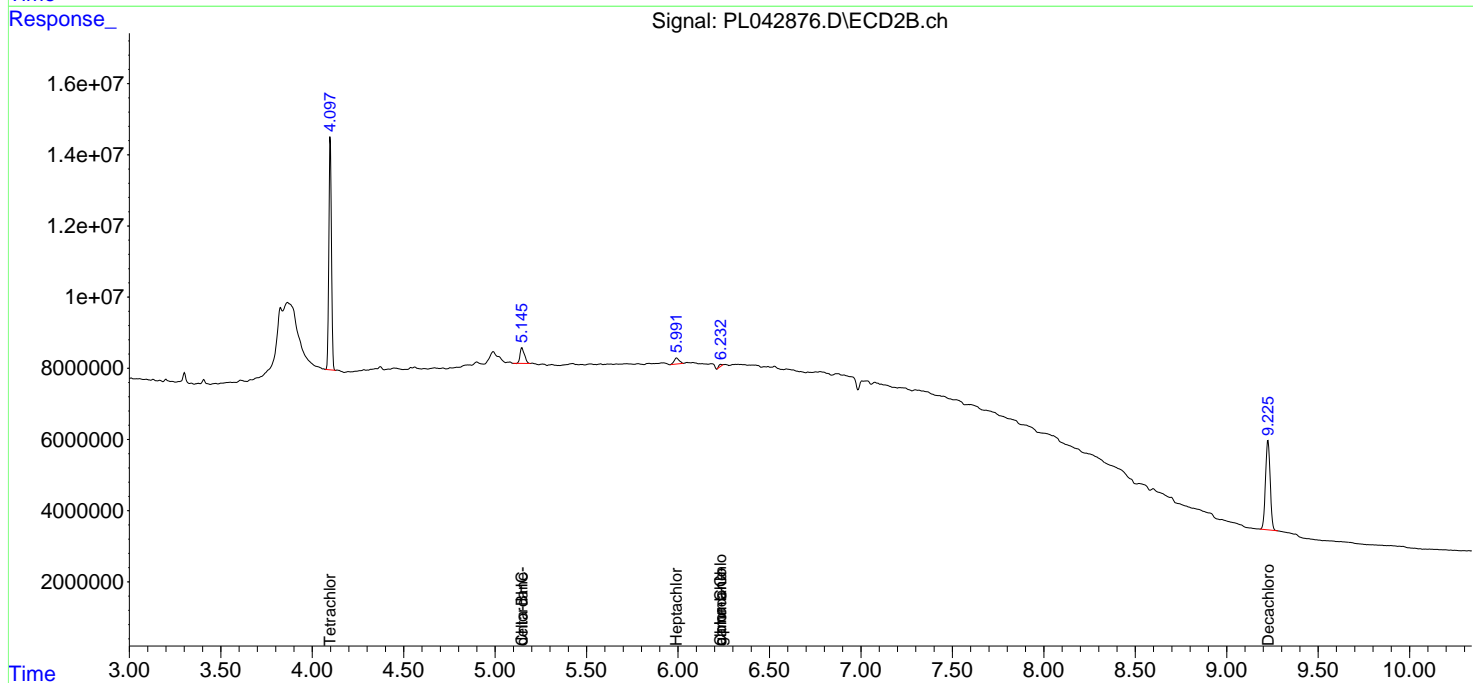
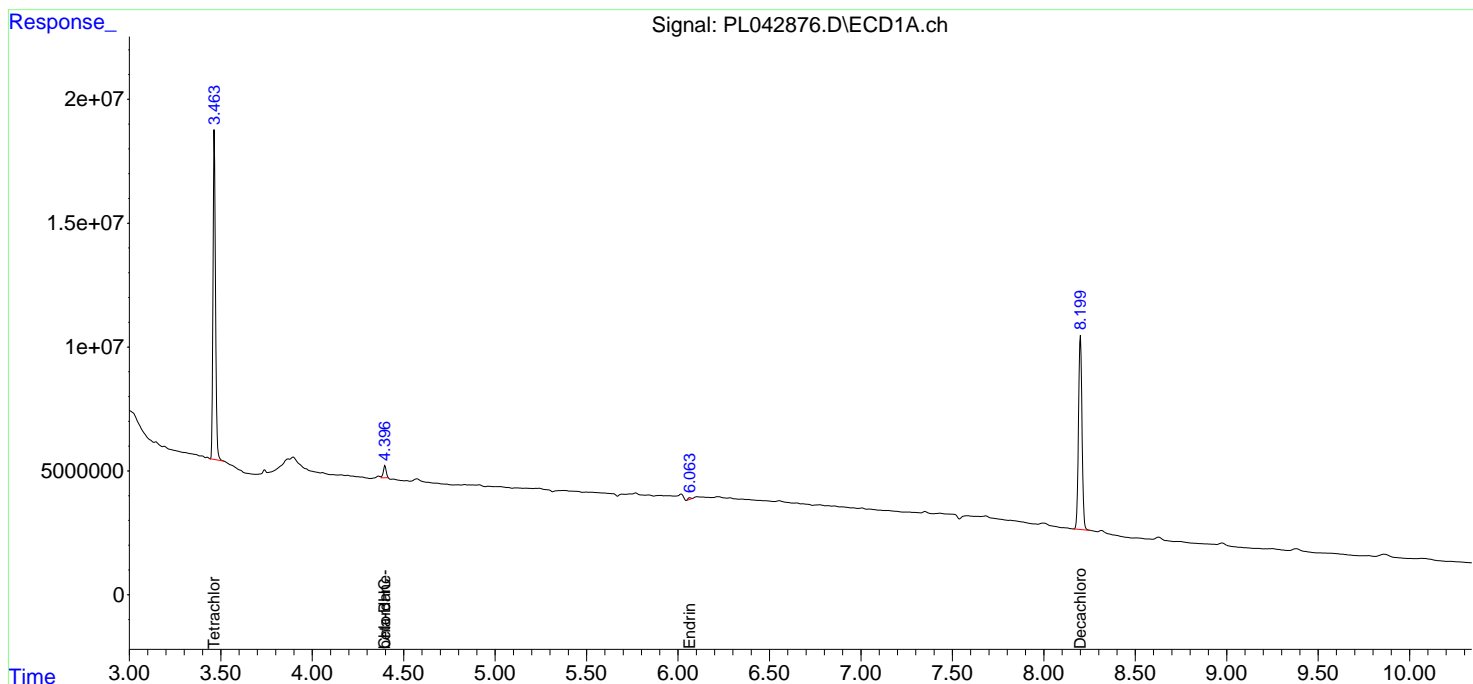
(f)=RT Delta > 1/2 Window (#)=Amounts differ by > 25% (m)=manual int.

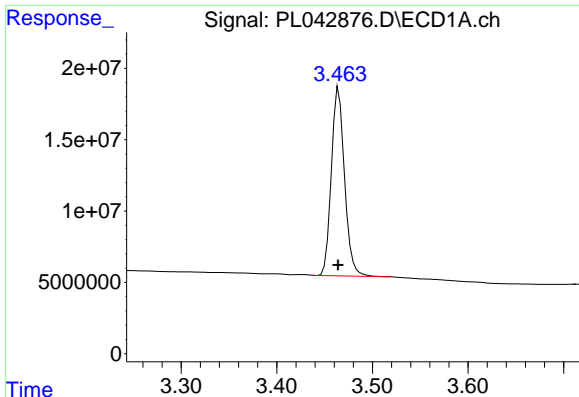
Data Path : Z:\pestpcbsrv\HPCHEM1\ECD_L\Data\PL120718\
 Data File : PL042876.D
 Signal(s) : Signal #1: ECD1A.ch Signal #2: ECD2B.ch
 Acq On : 07 Dec 2018 12:32
 Operator : AJ\SJ
 Sample : J6233-04
 Misc :
 ALS Vial : 15 Sample Multiplier: 1

Instrument :
 ECD_L
 ClientSampled :

Integration File signal 1: autoint1.e
 Integration File signal 2: autoint2.e
 Quant Time: Dec 07 13:09:17 2018
 Quant Method : Z:\pestpcbsrv\HPCHEM1\ECD_L\methods\PL120618.M
 Quant Title : GC Extractables
 QLast Update : Fri Dec 07 00:20:08 2018
 Response via : Initial Calibration
 Integrator: ChemStation

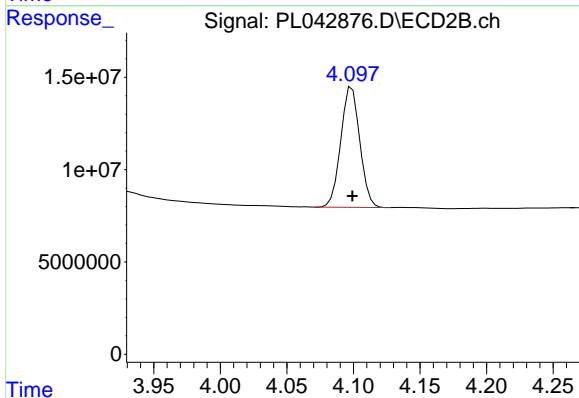
Volume Inj. : 2 µl
 Signal #1 Phase : ZB-MR1 Signal #2 Phase: ZB-MR2
 Signal #1 Info : 30M x 0.32mm x0.5 Signal #2 Info : 30M x 0.32mm x0.25µm



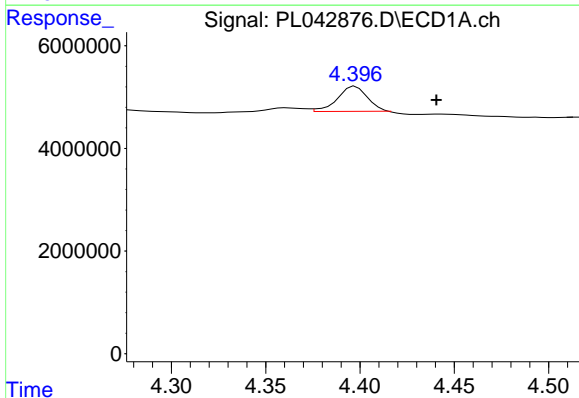


#1 Tetrachloro-m-xylene
 R.T.: 3.465 min
 Delta R.T.: 0.000 min
 Response: 125899967
 Conc: 20.53 ng/ml

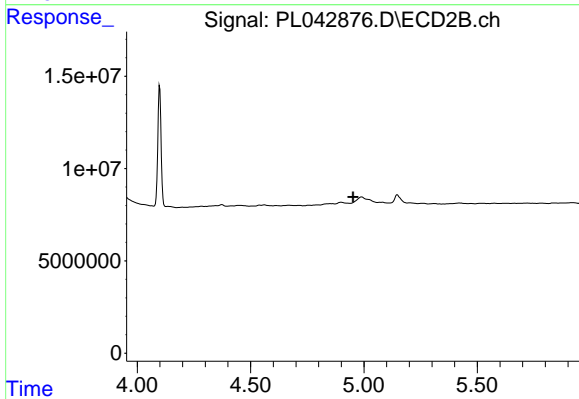
Instrument :
 ECD_L
 ClientSampleId :



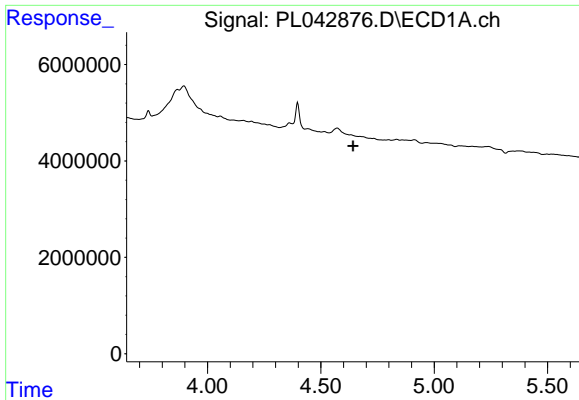
#1 Tetrachloro-m-xylene
 R.T.: 4.099 min
 Delta R.T.: 0.000 min
 Response: 64865871
 Conc: 21.89 ng/ml



#6 beta-BHC
 R.T.: 4.398 min
 Delta R.T.: -0.043 min
 Response: 5387537
 Conc: 1.46 ng/ml



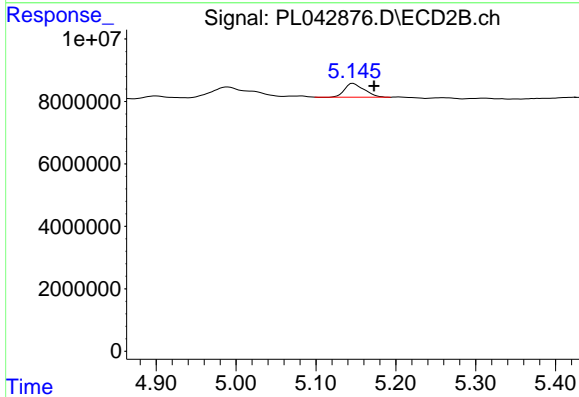
#6 beta-BHC
 R.T.: 0.000 min
 Exp R.T. : 4.952 min
 Response: 0
 Conc: N.D.



#7 delta-BHC

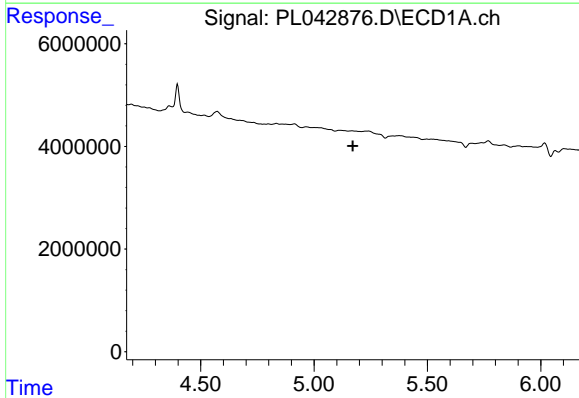
R.T.: 0.000 min
 Exp R.T. : 4.643 min
 Response: 0
 Conc: N.D.

Instrument :
 ECD_L
 ClientSampled :



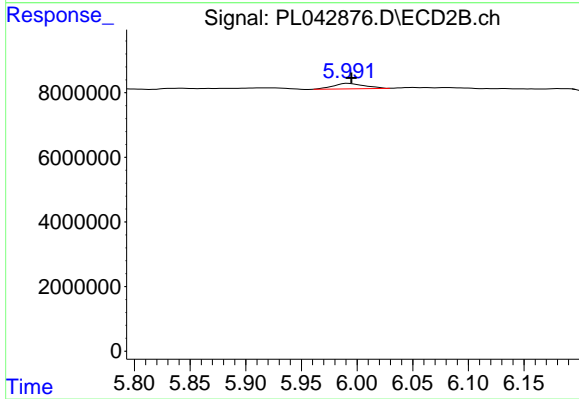
#7 delta-BHC

R.T.: 5.147 min
 Delta R.T.: -0.026 min
 Response: 7486190
 Conc: 1.74 ng/ml



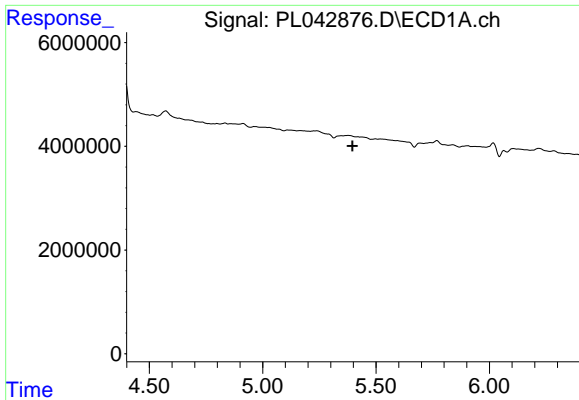
#8 Heptachlor epoxide

R.T.: 0.000 min
 Exp R.T. : 5.171 min
 Response: 0
 Conc: N.D.



#8 Heptachlor epoxide

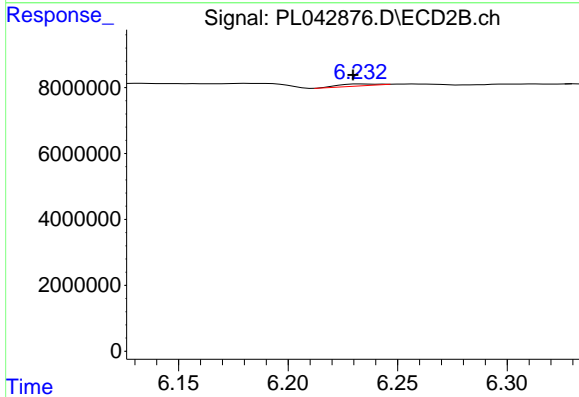
R.T.: 5.992 min
 Delta R.T.: -0.003 min
 Response: 3321536
 Conc: 0.88 ng/ml



#10 gamma-Chlordane

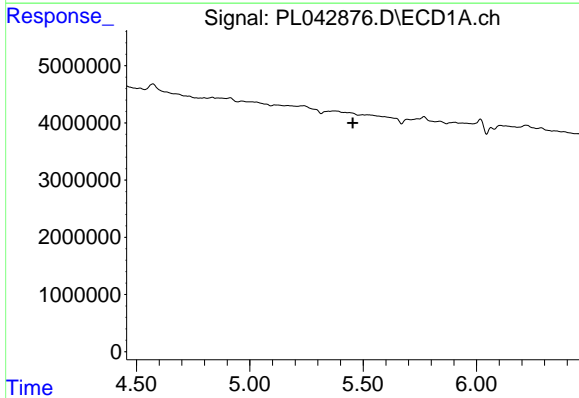
R.T.: 0.000 min
 Exp R.T. : 5.397 min
 Response: 0
 Conc: N.D.

Instrument :
 ECD_L
 ClientSampleId :



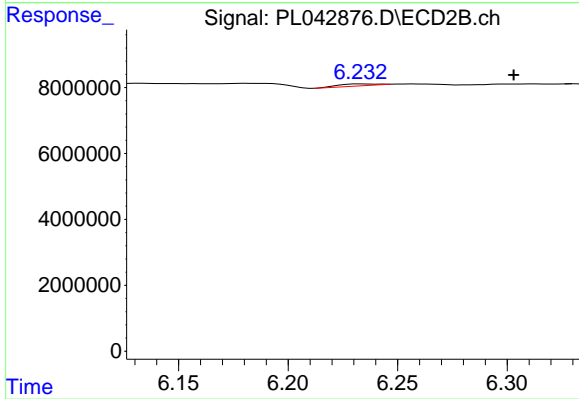
#10 gamma-Chlordane

R.T.: 6.233 min
 Delta R.T.: 0.004 min
 Response: 657986
 Conc: 0.18 ng/ml



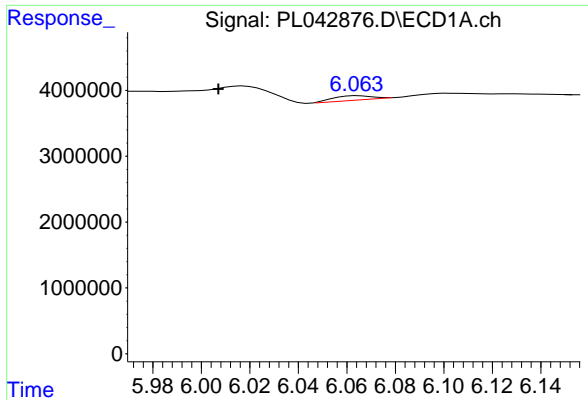
#11 alpha-Chlordane

R.T.: 0.000 min
 Exp R.T. : 5.454 min
 Response: 0
 Conc: N.D.



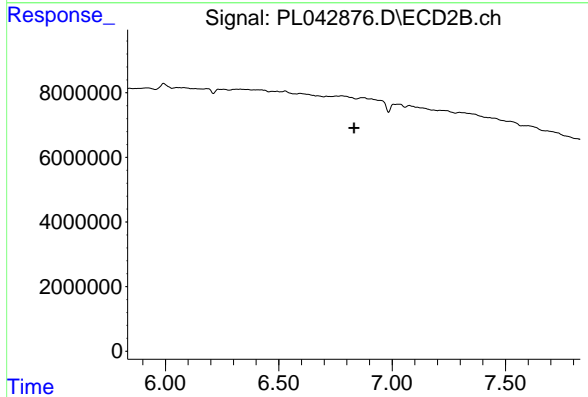
#11 alpha-Chlordane

R.T.: 6.233 min
 Delta R.T.: -0.070 min
 Response: 657986
 Conc: 0.18 ng/ml

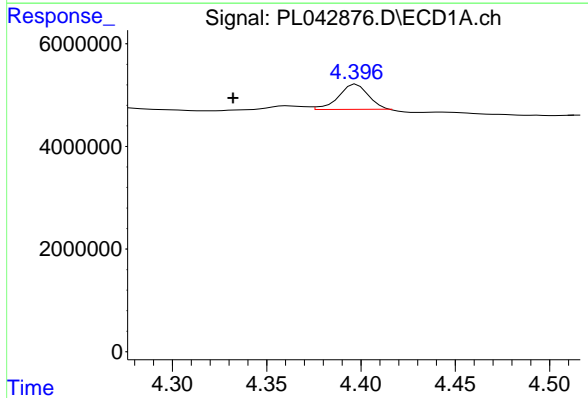


#14 Endrin
 R.T.: 6.064 min
 Delta R.T.: 0.057 min
 Response: 725717
 Conc: 0.10 ng/ml

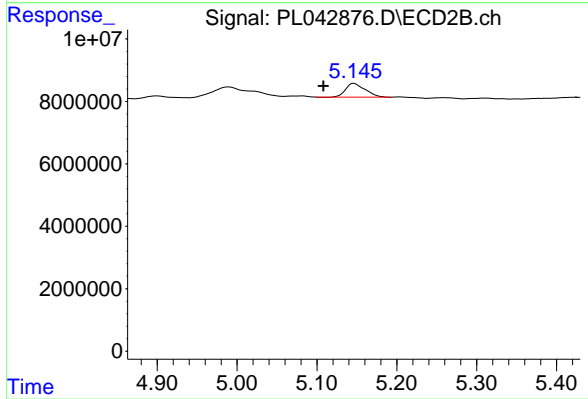
Instrument :
 ECD_L
 ClientSampleId :



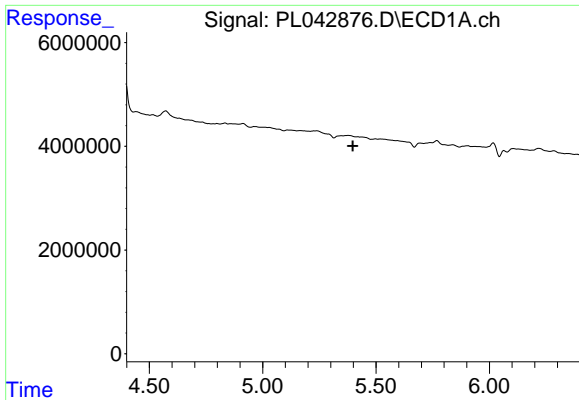
#14 Endrin
 R.T.: 0.000 min
 Exp R.T. : 6.832 min
 Response: 0
 Conc: N.D.



#23 Chlordane-1
 R.T.: 4.398 min
 Delta R.T.: 0.065 min
 Response: 5387537
 Conc: 20.05 ng/ml

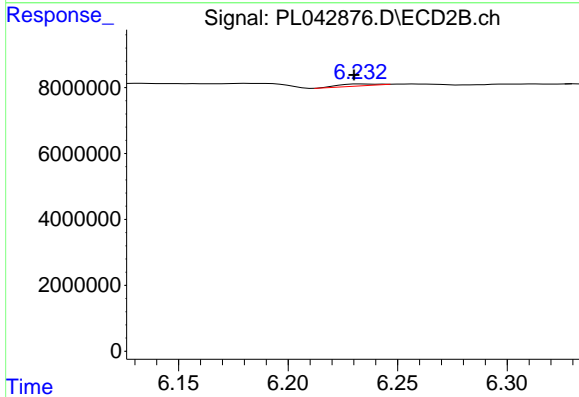


#23 Chlordane-1
 R.T.: 5.147 min
 Delta R.T.: 0.038 min
 Response: 7486190
 Conc: 52.97 ng/ml

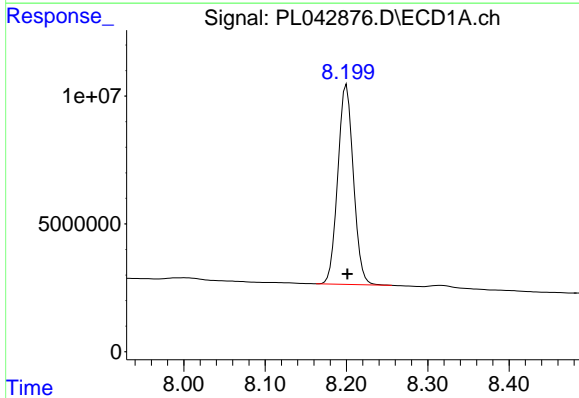


#25 Chlordane-3
R.T.: 0.000 min
Exp R.T.: 5.398 min
Response: 0
Conc: N.D.

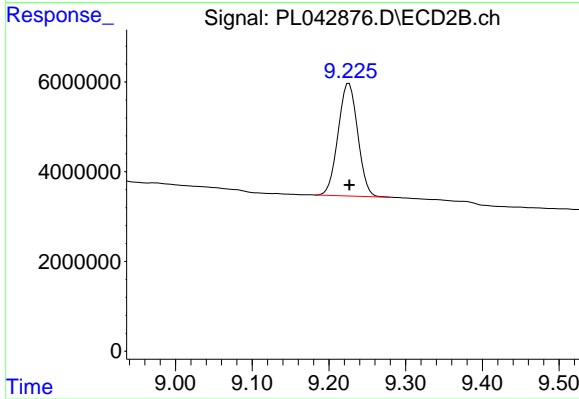
Instrument :
ECD_L
ClientSampled :



#25 Chlordane-3
R.T.: 6.233 min
Delta R.T.: 0.003 min
Response: 657986
Conc: 1.34 ng/ml



#28 Decachlorobiphenyl
R.T.: 8.200 min
Delta R.T.: -0.001 min
Response: 103909251
Conc: 15.91 ng/ml



#28 Decachlorobiphenyl
R.T.: 9.226 min
Delta R.T.: 0.000 min
Response: 44740087
Conc: 17.15 ng/ml