

Data Path : Z:\pestpcbsrv\HPCHEM1\ECD_L\Data\PL120721\
 Data File : PL071300.D
 Signal(s) : Signal #1: ECD1A.ch Signal #2: ECD2B.ch
 Acq On : 07 Dec 2021 11:29
 Operator : AR\AJ
 Sample : M4920-02
 Misc :
 ALS Vial : 8 Sample Multiplier: 1

Instrument :
 ECD_L
 ClientSampleId :
 FDR-20211202-WC-S

Integration File signal 1: autoint1.e
 Integration File signal 2: autoint2.e
 Quant Time: Dec 08 01:53:47 2021
 Quant Method : Z:\pestpcbsrv\HPCHEM1\ECD_L\methods\PL113021.M
 Quant Title : GC Extractables
 QLast Update : Tue Nov 30 16:26:31 2021
 Response via : Initial Calibration
 Integrator: ChemStation

Volume Inj. : 1 µl
 Signal #1 Phase : ZB-MR2 Signal #2 Phase: ZB-MR1
 Signal #1 Info : 30M x 0.32mm x0.2 Signal #2 Info : 30M x 0.32mm x0.5µm

Compound	RT#1	RT#2	Resp#1	Resp#2	ng/ml	ng/ml

System Monitoring Compounds						
1) SA Tetrachlo...	4.565	5.500	10593022	26798356	22.553	21.355
28) SA Decachlor...	10.328	11.391	15731929	26907843	21.726	19.358

Target Compounds

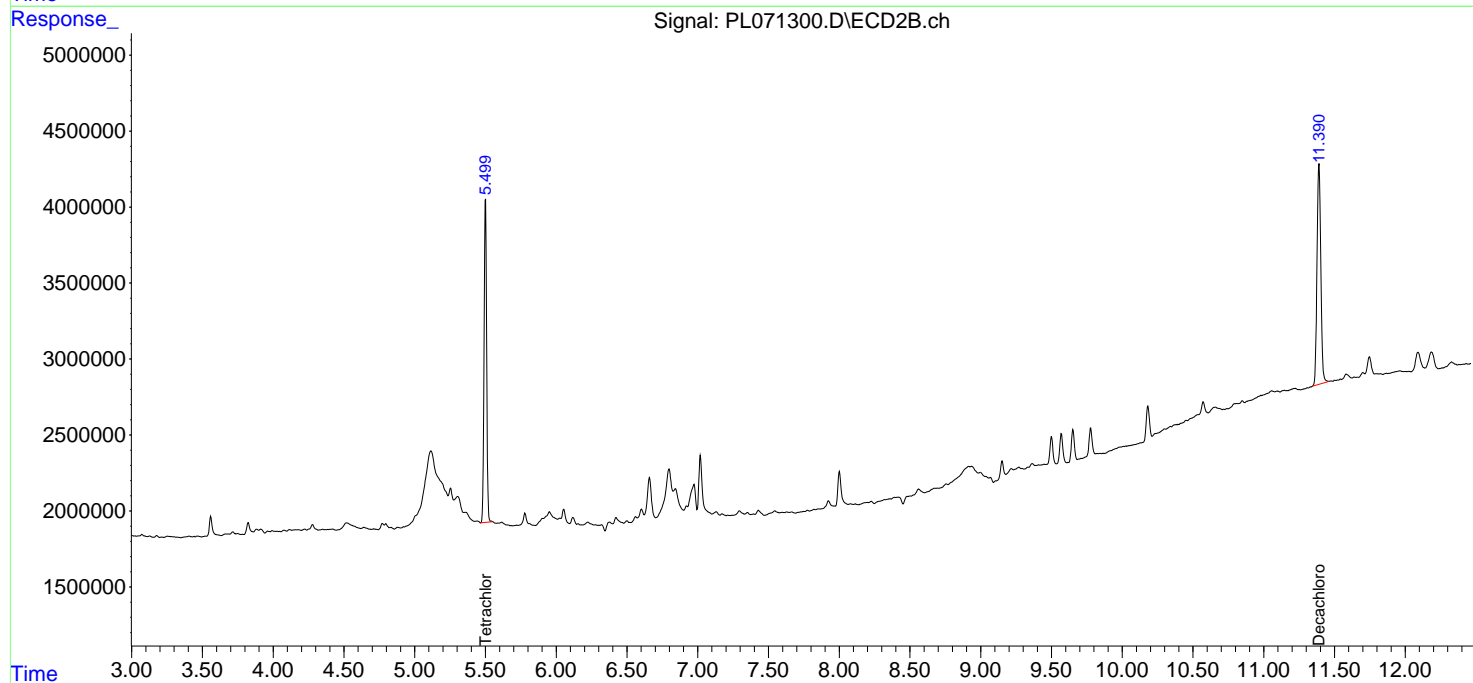
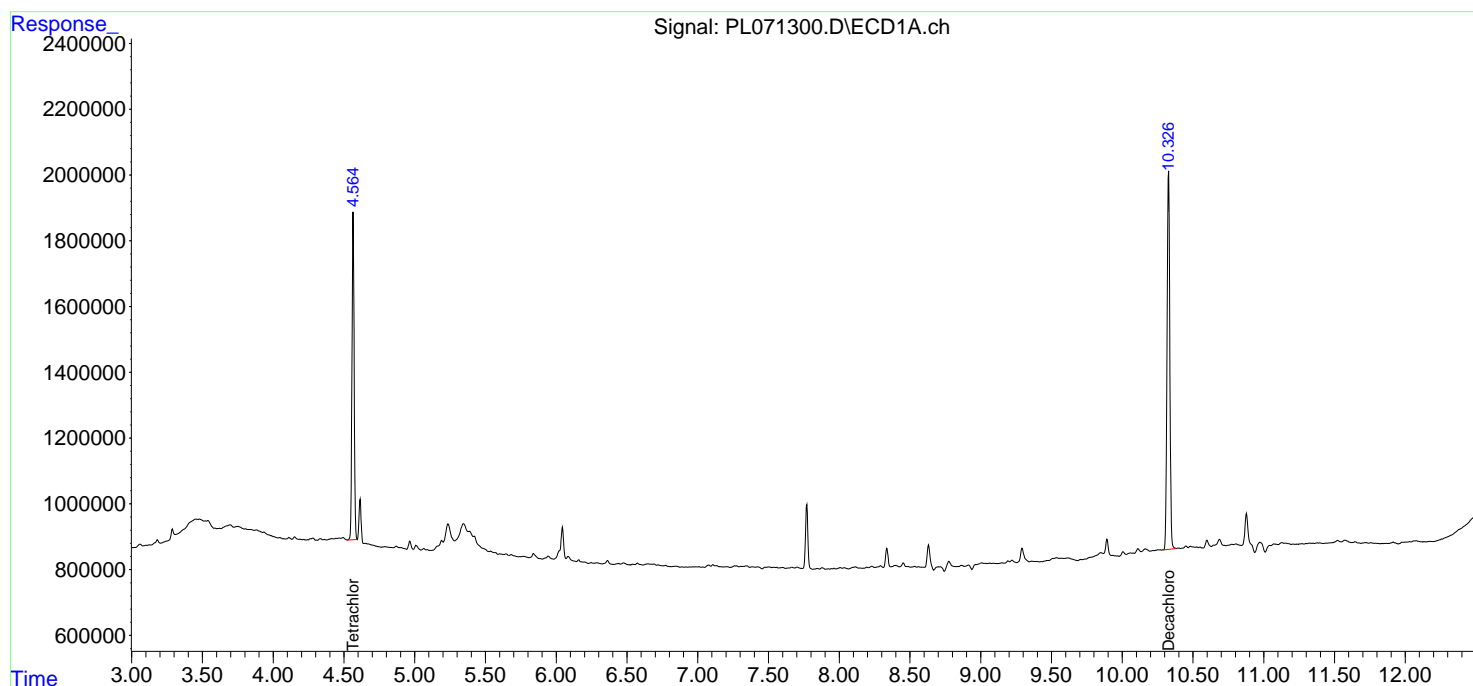
 (f)=RT Delta > 1/2 Window (#)=Amounts differ by > 25% (m)=manual int.

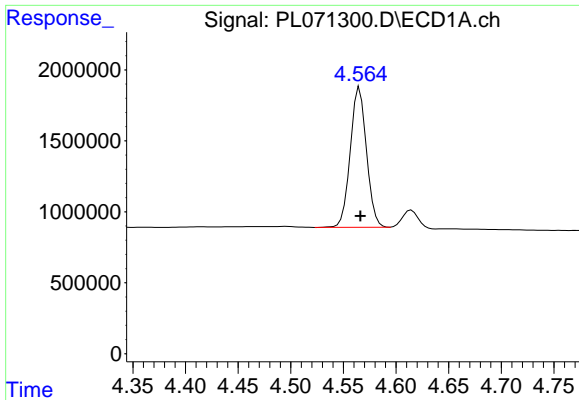
Data Path : Z:\pestpcbsrv\HPCHEM1\ECD_L\Data\PL120721\
Data File : PL071300.D
Signal(s) : Signal #1: ECD1A.ch Signal #2: ECD2B.ch
Acq On : 07 Dec 2021 11:29
Operator : AR\AJ
Sample : M4920-02
Misc :
ALS Vial : 8 Sample Multiplier: 1

Instrument :
ECD_L
ClientSampleId :
FDR-20211202-WC-S

Integration File signal 1: autoint1.e
Integration File signal 2: autoint2.e
Quant Time: Dec 08 01:53:47 2021
Quant Method : Z:\pestpcbsrv\HPCHEM1\ECD_L\methods\PL113021.M
Quant Title : GC Extractables
QLast Update : Tue Nov 30 16:26:31 2021
Response via : Initial Calibration
Integrator: ChemStation

Volume Inj. : 1 µl
Signal #1 Phase : ZB-MR2 Signal #2 Phase: ZB-MR1
Signal #1 Info : 30M x 0.32mm x0.2 Signal #2 Info : 30M x 0.32mm x0.5µm

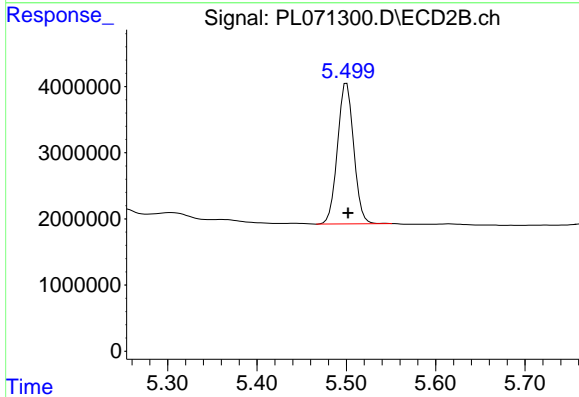




#1 Tetrachloro-m-xylene

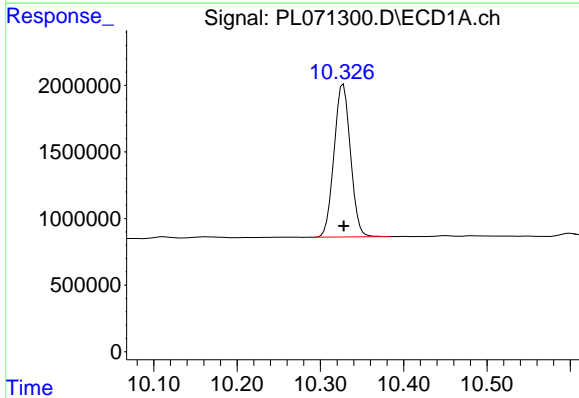
R.T.: 4.565 min
 Delta R.T.: 0.000 min
 Response: 10593022
 Conc: 22.55 ng/ml

Instrument :
 ECD_L
 ClientSampleId :
 FDR-20211202-WC-S



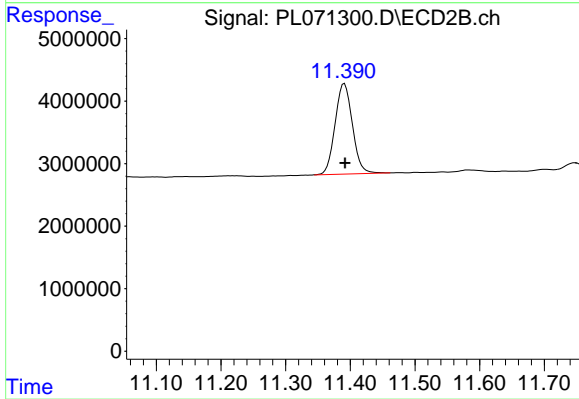
#1 Tetrachloro-m-xylene

R.T.: 5.500 min
 Delta R.T.: -0.002 min
 Response: 26798356
 Conc: 21.35 ng/ml



#28 Decachlorobiphenyl

R.T.: 10.328 min
 Delta R.T.: 0.000 min
 Response: 15731929
 Conc: 21.73 ng/ml



#28 Decachlorobiphenyl

R.T.: 11.391 min
 Delta R.T.: -0.001 min
 Response: 26907843
 Conc: 19.36 ng/ml