

Data Path : Z:\pestpcbsrv\HPCHEM1\ECD_L\Data\PL120721\
 Data File : PL071311.D
 Signal(s) : Signal #1: ECD1A.ch Signal #2: ECD2B.ch
 Acq On : 07 Dec 2021 14:38
 Operator : AR\AJ
 Sample : M4949-01
 Misc :
 ALS Vial : 19 Sample Multiplier: 1

Instrument :
 ECD_L
ClientSampleId :
 VNJ-221

Manual Integrations
APPROVED

Reviewed By :Abdul Mirza 12/08/2021
 Supervised By :mohammad ahmed 12/08/2021

Integration File signal 1: autoint1.e
 Integration File signal 2: autoint2.e
 Quant Time: Dec 08 01:55:29 2021
 Quant Method : Z:\pestpcbsrv\HPCHEM1\ECD_L\methods\PL113021.M
 Quant Title : GC Extractables
 QLast Update : Tue Nov 30 16:26:31 2021
 Response via : Initial Calibration
 Integrator: ChemStation

Volume Inj. : 1 µl
 Signal #1 Phase : ZB-MR2 Signal #2 Phase: ZB-MR1
 Signal #1 Info : 30M x 0.32mm x0.2 Signal #2 Info : 30M x 0.32mm x0.5µm

Compound	RT#1	RT#2	Resp#1	Resp#2	ng/ml	ng/ml

System Monitoring Compounds						
1) SA Tetrachlo...	4.563	5.499	9376835	24038005	19.964	19.155
28) SA Decachlor...	10.325	11.389	9099319	16853660	12.567	12.125
Target Compounds						
8) B Heptachlo...	7.000	7.957	380277	950010	0.610	0.598
10) B gamma-Chl...	7.277	8.226	1597529	5025701	2.516	3.143m
11) B alpha-Chl...	7.346	8.310	2439881	9436629	3.812	5.938 #
12) B 4,4'-DDE	7.561	8.493	355917	690927	0.629	0.449 #
13) MA Dieldrin	7.689	8.652	3841515	7838489	6.353	5.046
17) MA 4,4'-DDT	8.405	9.354	983253	1805243	1.797	1.298 #

(f)=RT Delta > 1/2 Window (#)=Amounts differ by > 25% (m)=manual int.

Data Path : Z:\pestpcbsrv\HPCHEM1\ECD_L\Data\PL120721\
 Data File : PL071311.D
 Signal(s) : Signal #1: ECD1A.ch Signal #2: ECD2B.ch
 Acq On : 07 Dec 2021 14:38
 Operator : AR\AJ
 Sample : M4949-01
 Misc :
 ALS Vial : 19 Sample Multiplier: 1

Instrument :

ECD_L

ClientSampleId :

VNJ-221

Manual Integrations

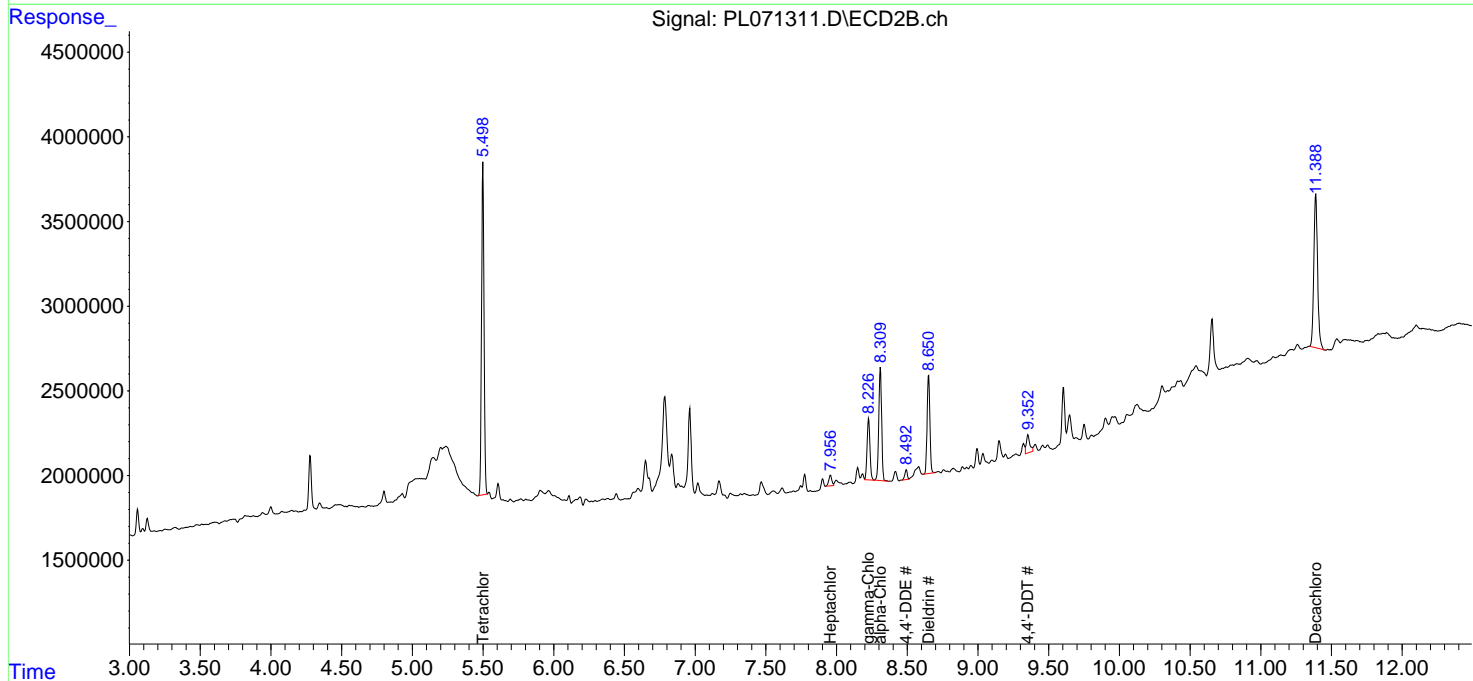
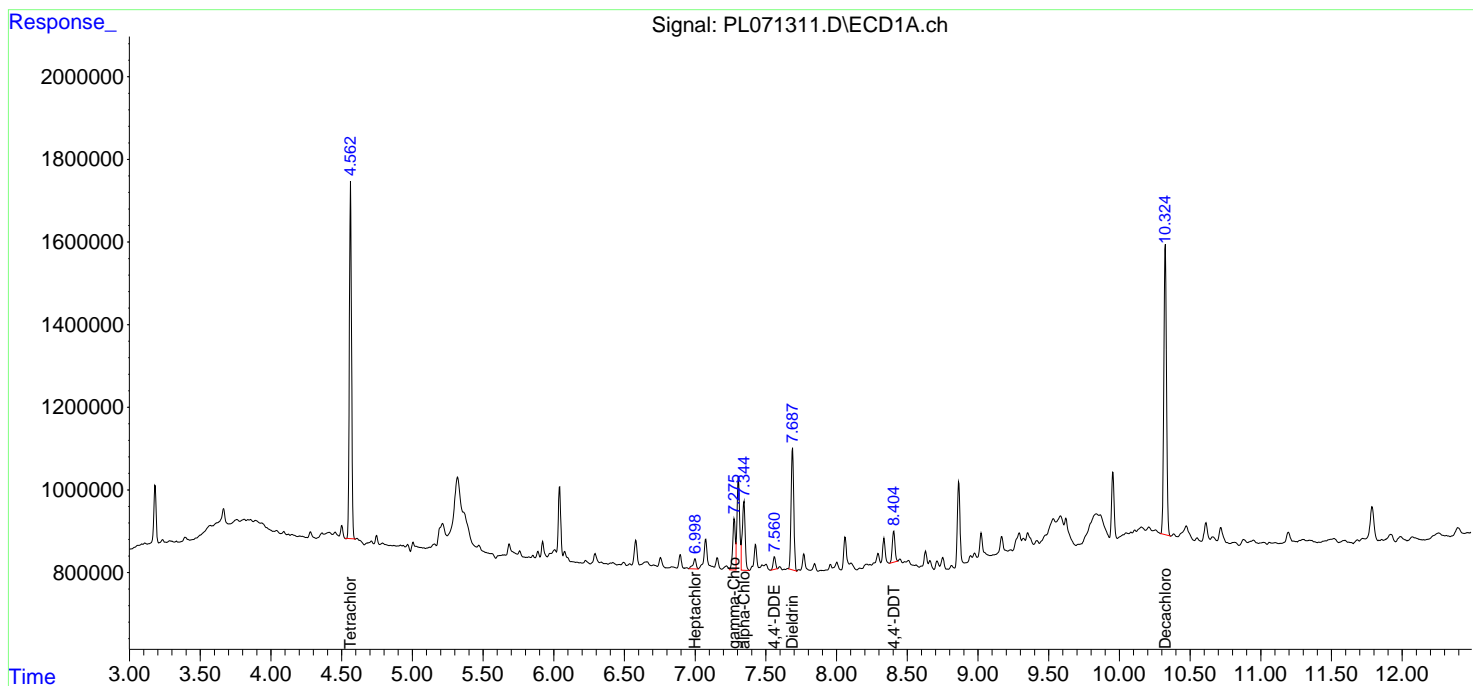
APPROVED

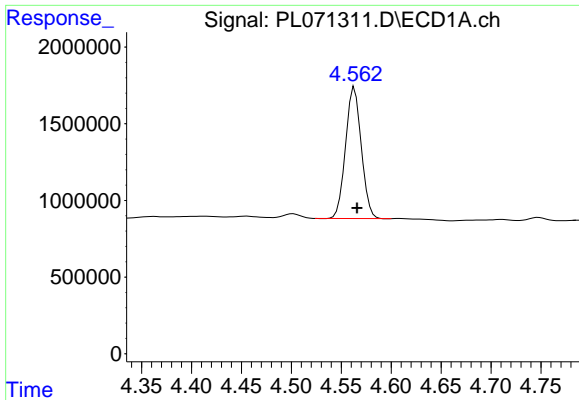
Reviewed By :Abdul Mirza 12/08/2021

Supervised By :mohammad ahmed 12/08/2021

Integration File signal 1: autoint1.e
 Integration File signal 2: autoint2.e
 Quant Time: Dec 08 01:55:29 2021
 Quant Method : Z:\pestpcbsrv\HPCHEM1\ECD_L\methods\PL113021.M
 Quant Title : GC Extractables
 QLast Update : Tue Nov 30 16:26:31 2021
 Response via : Initial Calibration
 Integrator: ChemStation

Volume Inj. : 1 µl
 Signal #1 Phase : ZB-MR2 Signal #2 Phase: ZB-MR1
 Signal #1 Info : 30M x 0.32mm x0.2 Signal #2 Info : 30M x 0.32mm x0.5µm

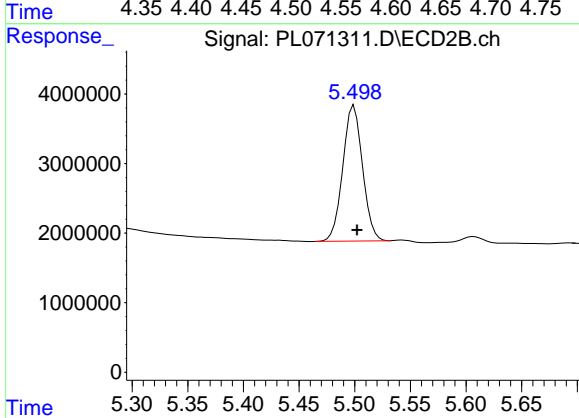




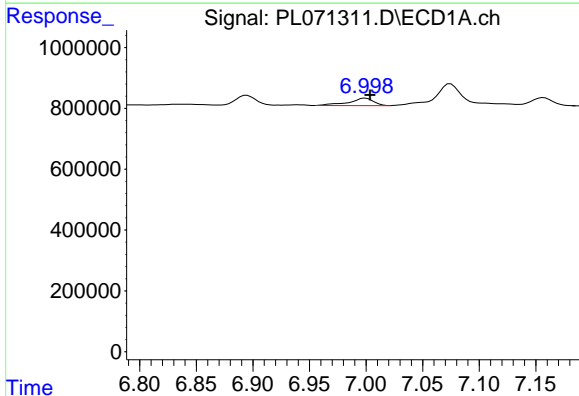
#1 Tetrachloro-m-xylene
 R.T.: 4.563 min
 Delta R.T.: -0.003 min
 Response: 9376835
 Conc: 19.96 ng/ml

Instrument : ECD_L
 ClientSampleId : VNJ-221

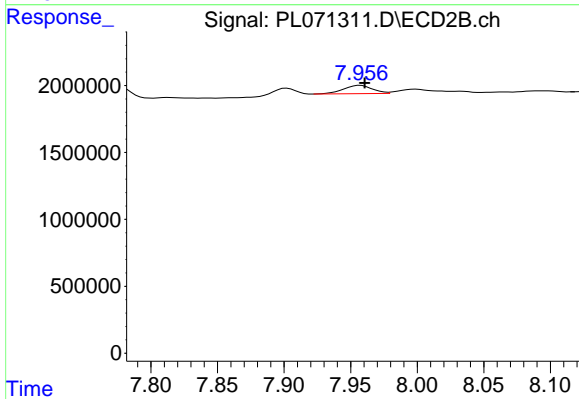
Manual Integrations
APPROVED
 Reviewed By :Abdul Mirza 12/08/2021
 Supervised By :mohammad ahmed 12/08/2021



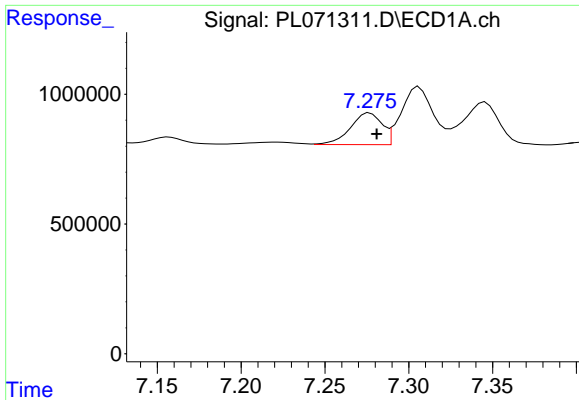
#1 Tetrachloro-m-xylene
 R.T.: 5.499 min
 Delta R.T.: -0.003 min
 Response: 24038005
 Conc: 19.15 ng/ml



#8 Heptachlor epoxide
 R.T.: 7.000 min
 Delta R.T.: -0.004 min
 Response: 380277
 Conc: 0.61 ng/ml



#8 Heptachlor epoxide
 R.T.: 7.957 min
 Delta R.T.: -0.003 min
 Response: 950010
 Conc: 0.60 ng/ml



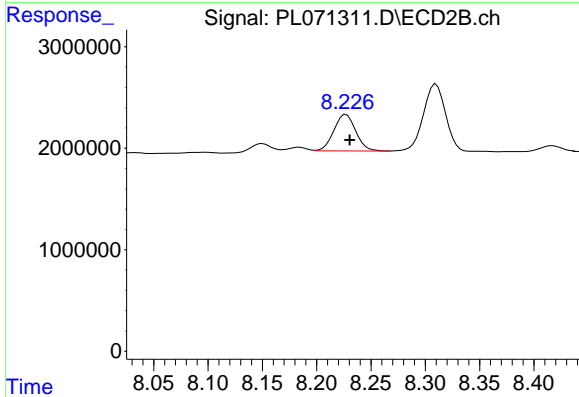
#10 gamma-Chlordane

R.T.: 7.277 min
 Delta R.T.: -0.004 min
 Response: 1597529
 Conc: 2.52 ng/ml

Instrument :
 ECD_L
 ClientSampleId :
 VNJ-221

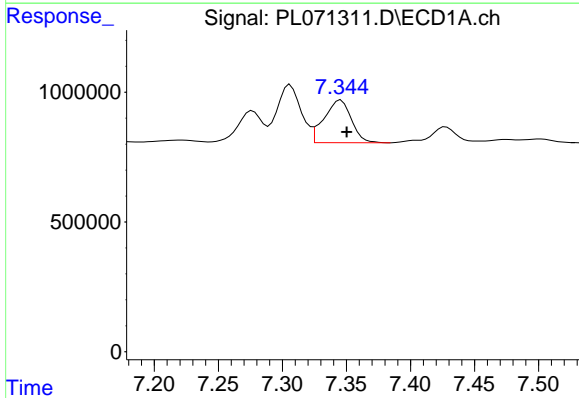
Manual Integrations
 APPROVED

Reviewed By :Abdul Mirza 12/08/2021
 Supervised By :mohammad ahmed 12/08/2021



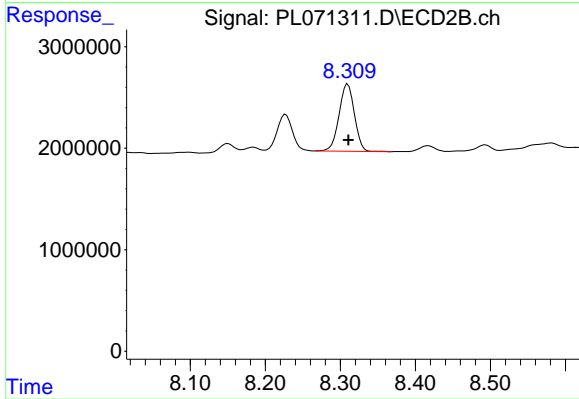
#10 gamma-Chlordane

R.T.: 8.226 min
 Delta R.T.: -0.005 min
 Response: 5025701
 Conc: 3.14 ng/ml m



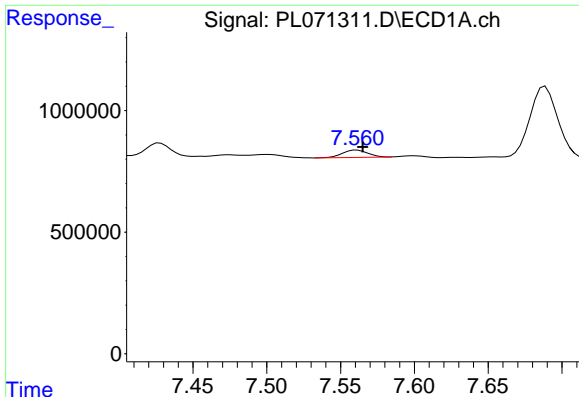
#11 alpha-Chlordane

R.T.: 7.346 min
 Delta R.T.: -0.004 min
 Response: 2439881
 Conc: 3.81 ng/ml



#11 alpha-Chlordane

R.T.: 8.310 min
 Delta R.T.: 0.000 min
 Response: 9436629
 Conc: 5.94 ng/ml



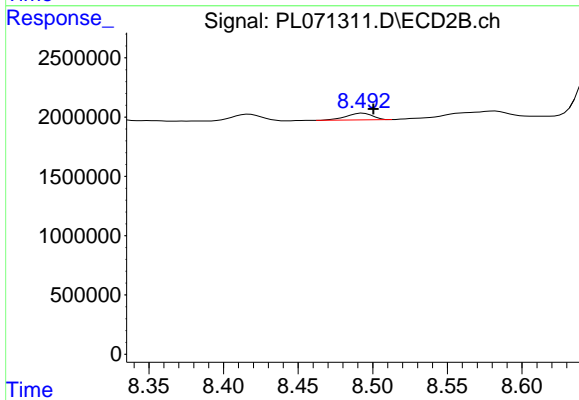
#12 4,4'-DDE

R.T.: 7.561 min
 Delta R.T.: -0.004 min
 Response: 355917
 Conc: 0.63 ng/ml

Instrument : ECD_L
 ClientSampleId : VNJ-221

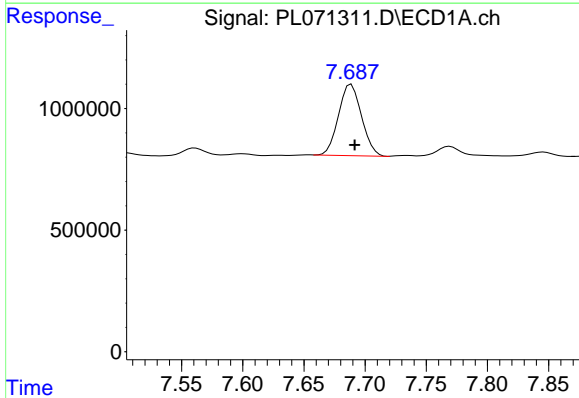
Manual Integrations
 APPROVED

Reviewed By :Abdul Mirza 12/08/2021
 Supervised By :mohammad ahmed 12/08/2021



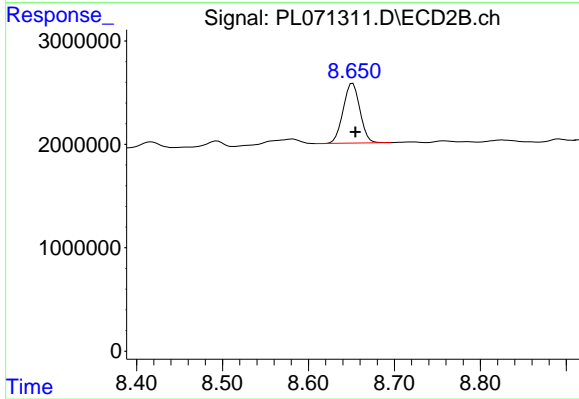
#12 4,4'-DDE

R.T.: 8.493 min
 Delta R.T.: -0.007 min
 Response: 690927
 Conc: 0.45 ng/ml



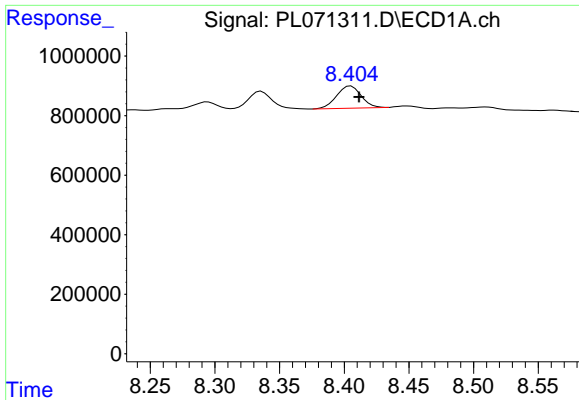
#13 Dieldrin

R.T.: 7.689 min
 Delta R.T.: -0.003 min
 Response: 3841515
 Conc: 6.35 ng/ml



#13 Dieldrin

R.T.: 8.652 min
 Delta R.T.: -0.003 min
 Response: 7838489
 Conc: 5.05 ng/ml



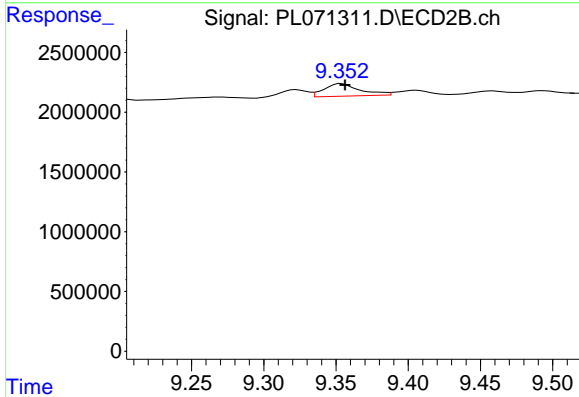
#17 4,4'-DDT

R.T.: 8.405 min
 Delta R.T.: -0.006 min
 Response: 983253
 Conc: 1.80 ng/ml

Instrument :
 ECD_L
 ClientSampleId :
 VNJ-221

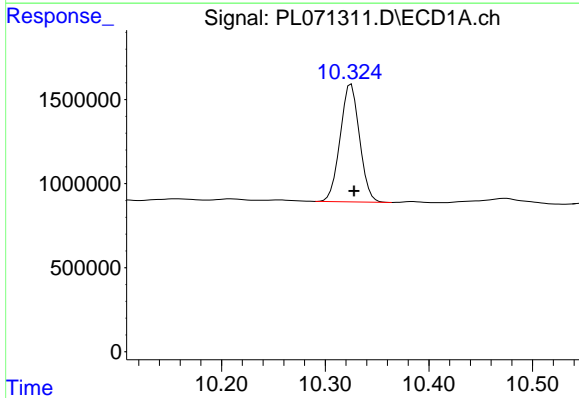
Manual Integrations
 APPROVED

Reviewed By :Abdul Mirza 12/08/2021
 Supervised By :mohammad ahmed 12/08/2021



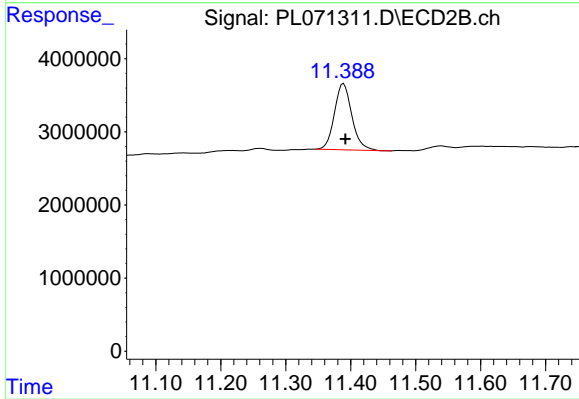
#17 4,4'-DDT

R.T.: 9.354 min
 Delta R.T.: -0.003 min
 Response: 1805243
 Conc: 1.30 ng/ml



#28 Decachlorobiphenyl

R.T.: 10.325 min
 Delta R.T.: -0.003 min
 Response: 9099319
 Conc: 12.57 ng/ml



#28 Decachlorobiphenyl

R.T.: 11.389 min
 Delta R.T.: -0.003 min
 Response: 16853660
 Conc: 12.12 ng/ml