

Data Path : Z:\pestpcbsrv\HPCHEM1\ECD_L\Data\PL120820\
 Data File : PL063368.D
 Signal(s) : Signal #1: ECD1A.ch Signal #2: ECD2B.ch
 Acq On : 08 Dec 2020 11:54
 Operator : DD\AJ
 Sample : PB133459BL
 Misc :
 ALS Vial : 5 Sample Multiplier: 1

Instrument :
 ECD_L
 ClientSampleId :
 PB133459BL

Integration File signal 1: autoint1.e
 Integration File signal 2: autoint2.e
 Quant Time: Dec 09 00:11:15 2020
 Quant Method : Z:\pestpcbsrv\HPCHEM1\ECD_L\methods\PL112320.M
 Quant Title : GC Extractables
 QLast Update : Tue Nov 24 01:53:58 2020
 Response via : Initial Calibration
 Integrator: ChemStation

Volume Inj. : 1 µl
 Signal #1 Phase : ZB-MR2 Signal #2 Phase: ZB-MR1
 Signal #1 Info : 30M x 0.32mm x0.2 Signal #2 Info : 30M x 0.32mm x0.5µm

Compound	RT#1	RT#2	Resp#1	Resp#2	ng/ml	ng/ml

System Monitoring Compounds						
1) SA Tetrachlo...	3.417	3.951	35459593	62533153	20.821	19.160
28) SA Decachlor...	8.138	8.999	38139009	51288944	20.423	21.557

Target Compounds

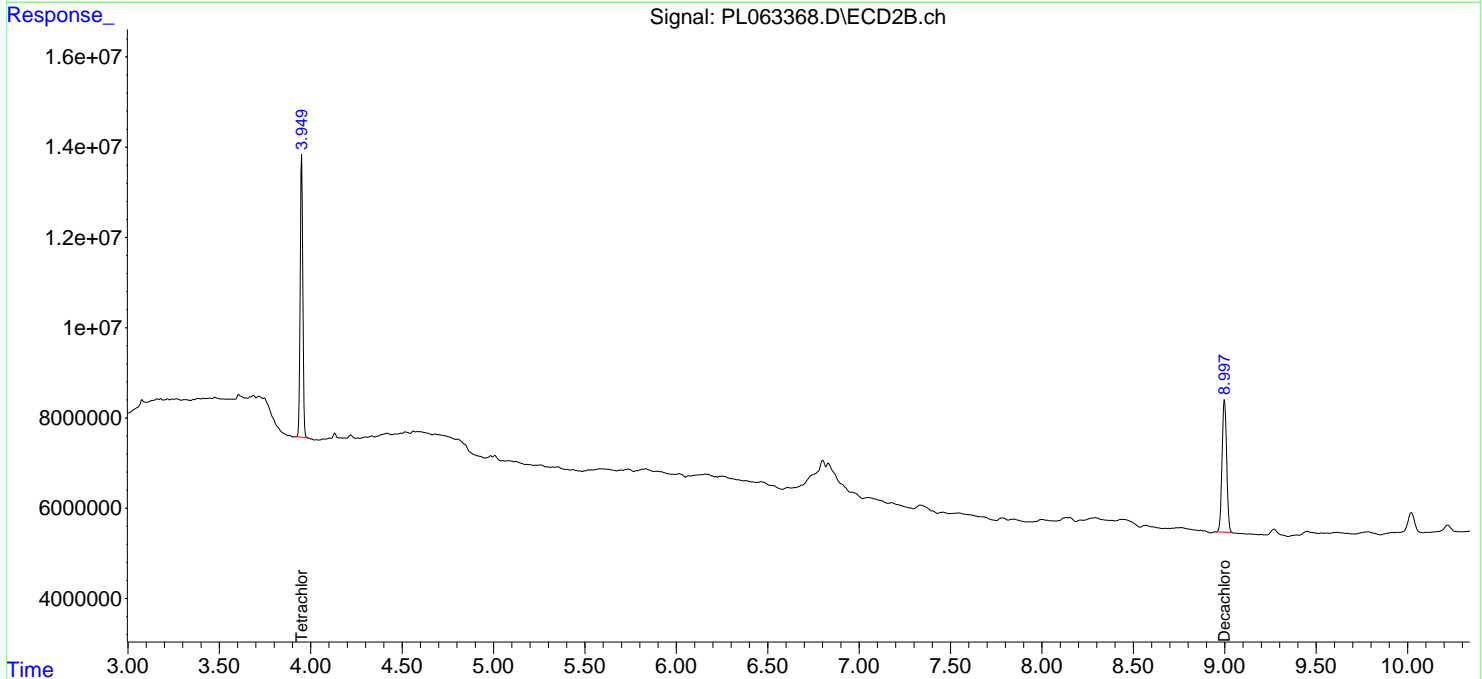
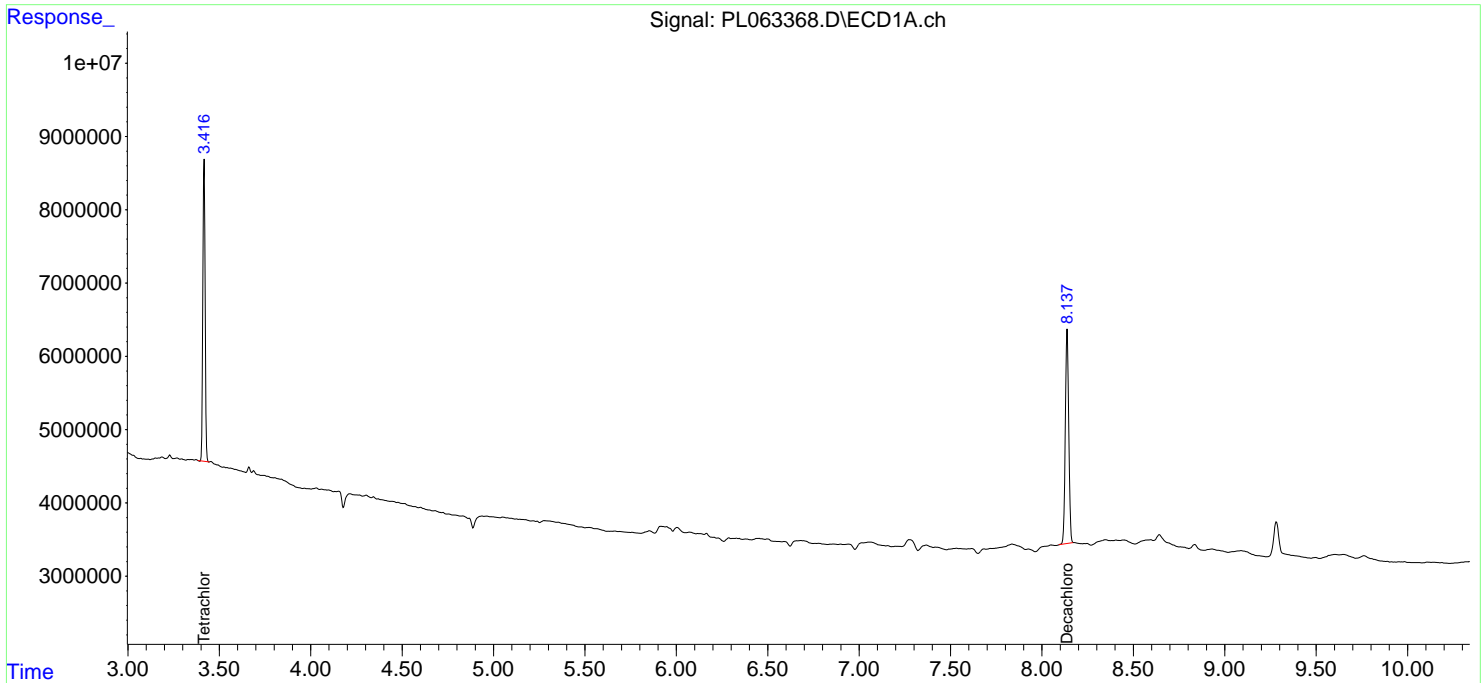
(f)=RT Delta > 1/2 Window (#)=Amounts differ by > 25% (m)=manual int.

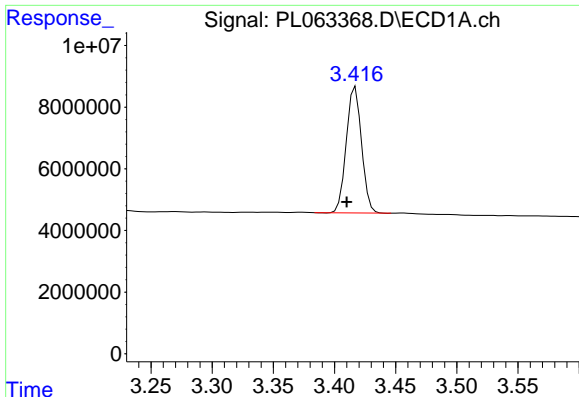
Data Path : Z:\pestpcbsrv\HPCHEM1\ECD_L\Data\PL120820\
Data File : PL063368.D
Signal(s) : Signal #1: ECD1A.ch Signal #2: ECD2B.ch
Acq On : 08 Dec 2020 11:54
Operator : DD\AJ
Sample : PB133459BL
Misc :
ALS Vial : 5 Sample Multiplier: 1

Instrument :
ECD_L
ClientSampled :
PB133459BL

Integration File signal 1: autoint1.e
Integration File signal 2: autoint2.e
Quant Time: Dec 09 00:11:15 2020
Quant Method : Z:\pestpcbsrv\HPCHEM1\ECD_L\methods\PL112320.M
Quant Title : GC Extractables
QLast Update : Tue Nov 24 01:53:58 2020
Response via : Initial Calibration
Integrator: ChemStation

Volume Inj. : 1 µl
Signal #1 Phase : ZB-MR2 Signal #2 Phase: ZB-MR1
Signal #1 Info : 30M x 0.32mm x0.2 Signal #2 Info : 30M x 0.32mm x0.5µm

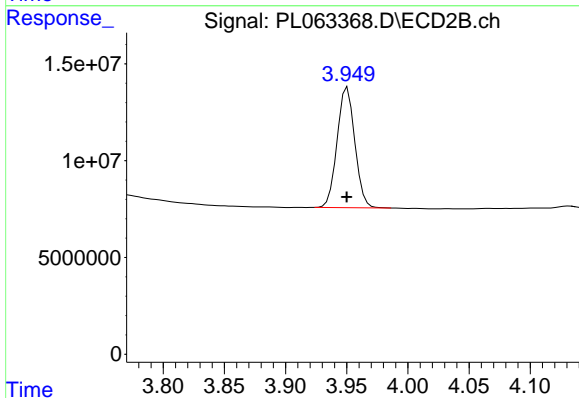




#1 Tetrachloro-m-xylene

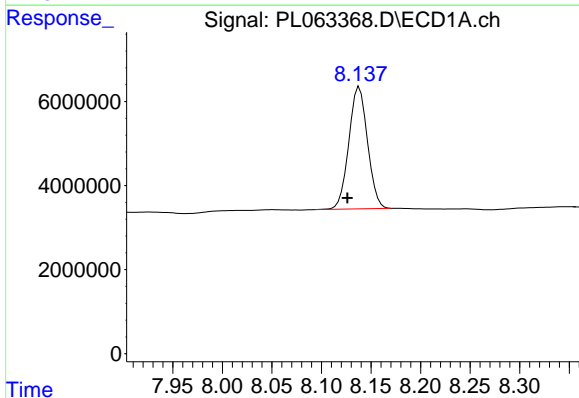
R.T.: 3.417 min
 Delta R.T.: 0.007 min
 Response: 35459593
 Conc: 20.82 ng/ml

Instrument :
 ECD_L
 ClientSampleId :
 PB133459BL



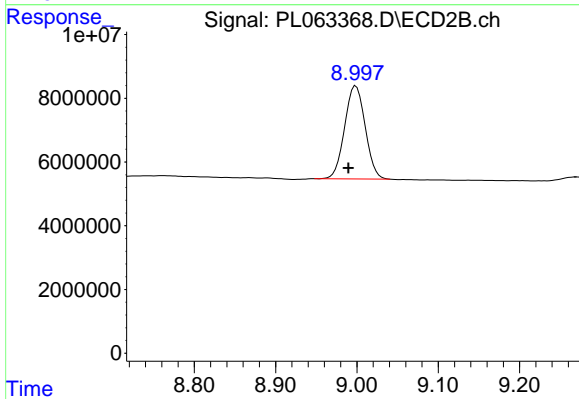
#1 Tetrachloro-m-xylene

R.T.: 3.951 min
 Delta R.T.: 0.000 min
 Response: 62533153
 Conc: 19.16 ng/ml



#28 Decachlorobiphenyl

R.T.: 8.138 min
 Delta R.T.: 0.012 min
 Response: 38139009
 Conc: 20.42 ng/ml



#28 Decachlorobiphenyl

R.T.: 8.999 min
 Delta R.T.: 0.009 min
 Response: 51288944
 Conc: 21.56 ng/ml