

Data Path : Z:\pestpcbsrv\HPCHEM1\ECD_L\Data\PL120820\
 Data File : PL063391.D
 Signal(s) : Signal #1: ECD1A.ch Signal #2: ECD2B.ch
 Acq On : 08 Dec 2020 17:28
 Operator : DD\AJ
 Sample : PB133489BL
 Misc :
 ALS Vial : 23 Sample Multiplier: 1

Instrument :
 ECD_L
 ClientSampleId :

Integration File signal 1: autoint1.e
 Integration File signal 2: autoint2.e
 Quant Time: Dec 09 00:17:49 2020
 Quant Method : Z:\pestpcbsrv\HPCHEM1\ECD_L\methods\PL112320.M
 Quant Title : GC Extractables
 QLast Update : Tue Nov 24 01:53:58 2020
 Response via : Initial Calibration
 Integrator: ChemStation

Volume Inj. : 1 µl
 Signal #1 Phase : ZB-MR2 Signal #2 Phase: ZB-MR1
 Signal #1 Info : 30M x 0.32mm x0.2 Signal #2 Info : 30M x 0.32mm x0.5µm

Compound	RT#1	RT#2	Resp#1	Resp#2	ng/ml	ng/ml

System Monitoring Compounds						
1) SA Tetrachlo...	3.410	3.951	35529115	69538642	20.862	21.306
28) SA Decachlor...	8.128	8.994	39747853	52236517	21.285	21.955

Target Compounds

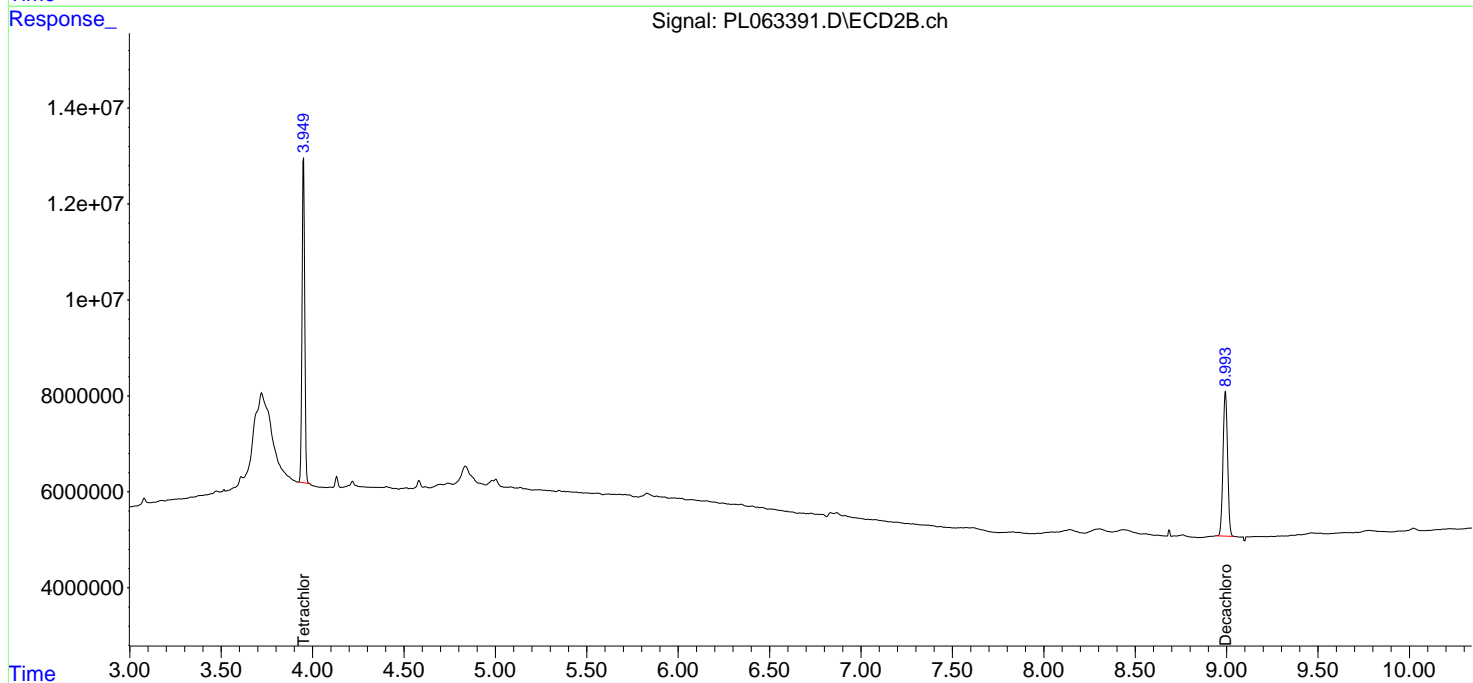
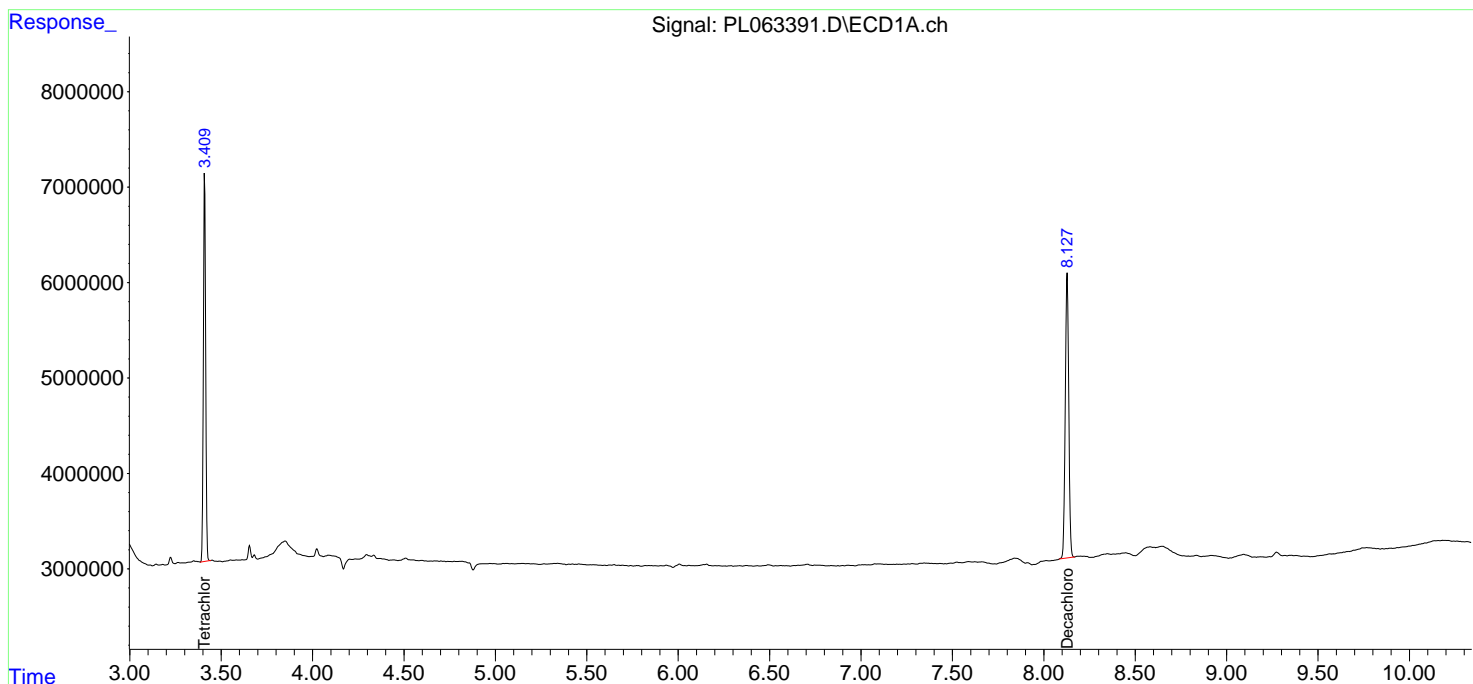
(f)=RT Delta > 1/2 Window (#)=Amounts differ by > 25% (m)=manual int.

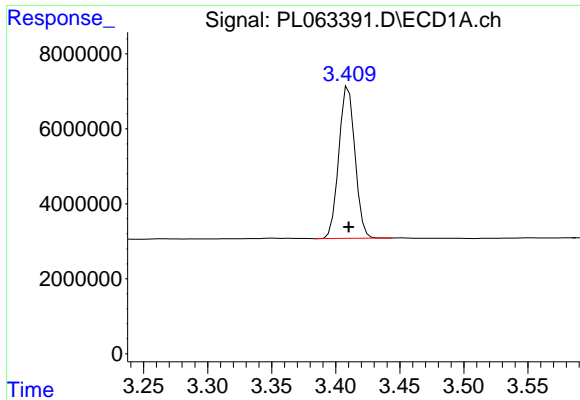
Data Path : Z:\pestpcbsrv\HPCHEM1\ECD_L\Data\PL120820\
 Data File : PL063391.D
 Signal(s) : Signal #1: ECD1A.ch Signal #2: ECD2B.ch
 Acq On : 08 Dec 2020 17:28
 Operator : DD\AJ
 Sample : PB133489BL
 Misc :
 ALS Vial : 23 Sample Multiplier: 1

Instrument :
 ECD_L
 ClientSampled :

Integration File signal 1: autoint1.e
 Integration File signal 2: autoint2.e
 Quant Time: Dec 09 00:17:49 2020
 Quant Method : Z:\pestpcbsrv\HPCHEM1\ECD_L\methods\PL112320.M
 Quant Title : GC Extractables
 QLast Update : Tue Nov 24 01:53:58 2020
 Response via : Initial Calibration
 Integrator: ChemStation

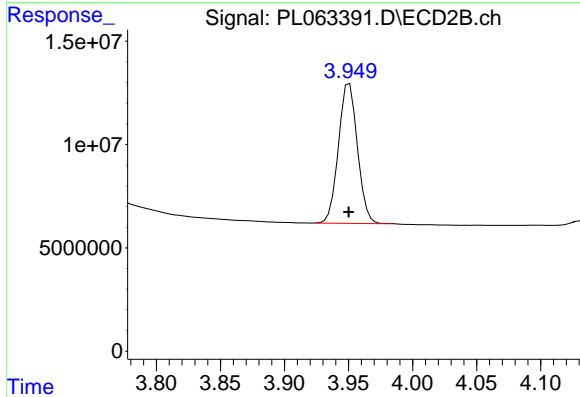
Volume Inj. : 1 µl
 Signal #1 Phase : ZB-MR2 Signal #2 Phase: ZB-MR1
 Signal #1 Info : 30M x 0.32mm x0.2 Signal #2 Info : 30M x 0.32mm x0.5µm



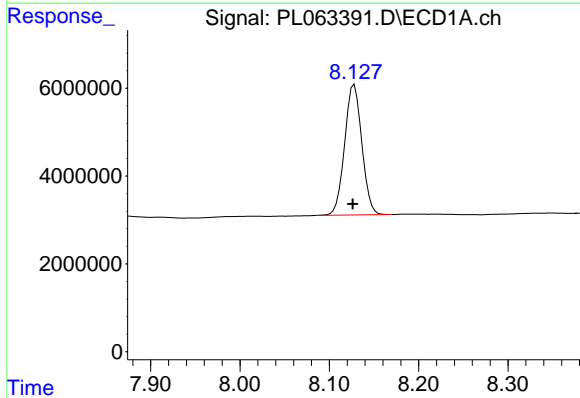


#1 Tetrachloro-m-xylene
 R.T.: 3.410 min
 Delta R.T.: 0.000 min
 Response: 35529115
 Conc: 20.86 ng/ml

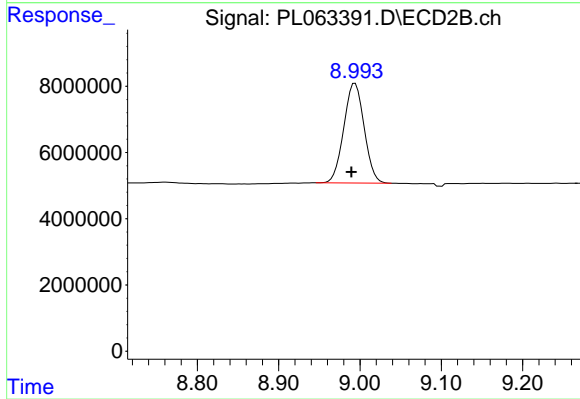
Instrument :
 ECD_L
 ClientSampleId :



#1 Tetrachloro-m-xylene
 R.T.: 3.951 min
 Delta R.T.: 0.000 min
 Response: 69538642
 Conc: 21.31 ng/ml



#28 Decachlorobiphenyl
 R.T.: 8.128 min
 Delta R.T.: 0.002 min
 Response: 39747853
 Conc: 21.28 ng/ml



#28 Decachlorobiphenyl
 R.T.: 8.994 min
 Delta R.T.: 0.004 min
 Response: 52236517
 Conc: 21.96 ng/ml