

Data Path : Z:\pestpcbsrv\HPCHEM1\ECD\_L\Data\PL120820\  
 Data File : PL063402.D  
 Signal(s) : Signal #1: ECD1A.ch Signal #2: ECD2B.ch  
 Acq On : 08 Dec 2020 20:05  
 Operator : DD\AJ  
 Sample : L4971-02  
 Misc :  
 ALS Vial : 34 Sample Multiplier: 1

Instrument :  
 ECD\_L  
 ClientSampleId :  
 5S1-A-D-COMP

Integration File signal 1: autoint1.e  
 Integration File signal 2: autoint2.e  
 Quant Time: Dec 09 00:20:57 2020  
 Quant Method : Z:\pestpcbsrv\HPCHEM1\ECD\_L\methods\PL112320.M  
 Quant Title : GC Extractables  
 QLast Update : Tue Nov 24 01:53:58 2020  
 Response via : Initial Calibration  
 Integrator: ChemStation

Volume Inj. : 1 µl  
 Signal #1 Phase : ZB-MR2 Signal #2 Phase: ZB-MR1  
 Signal #1 Info : 30M x 0.32mm x0.2 Signal #2 Info : 30M x 0.32mm x0.5µm

Compound	RT#1	RT#2	Resp#1	Resp#2	ng/ml	ng/ml
-----						
System Monitoring Compounds						
1) SA Tetrachlo...	3.410	3.951	34961991	67428649	20.529	20.660
28) SA Decachlor...	8.129	8.994	34869461	46643610	18.672	19.604

Target Compounds

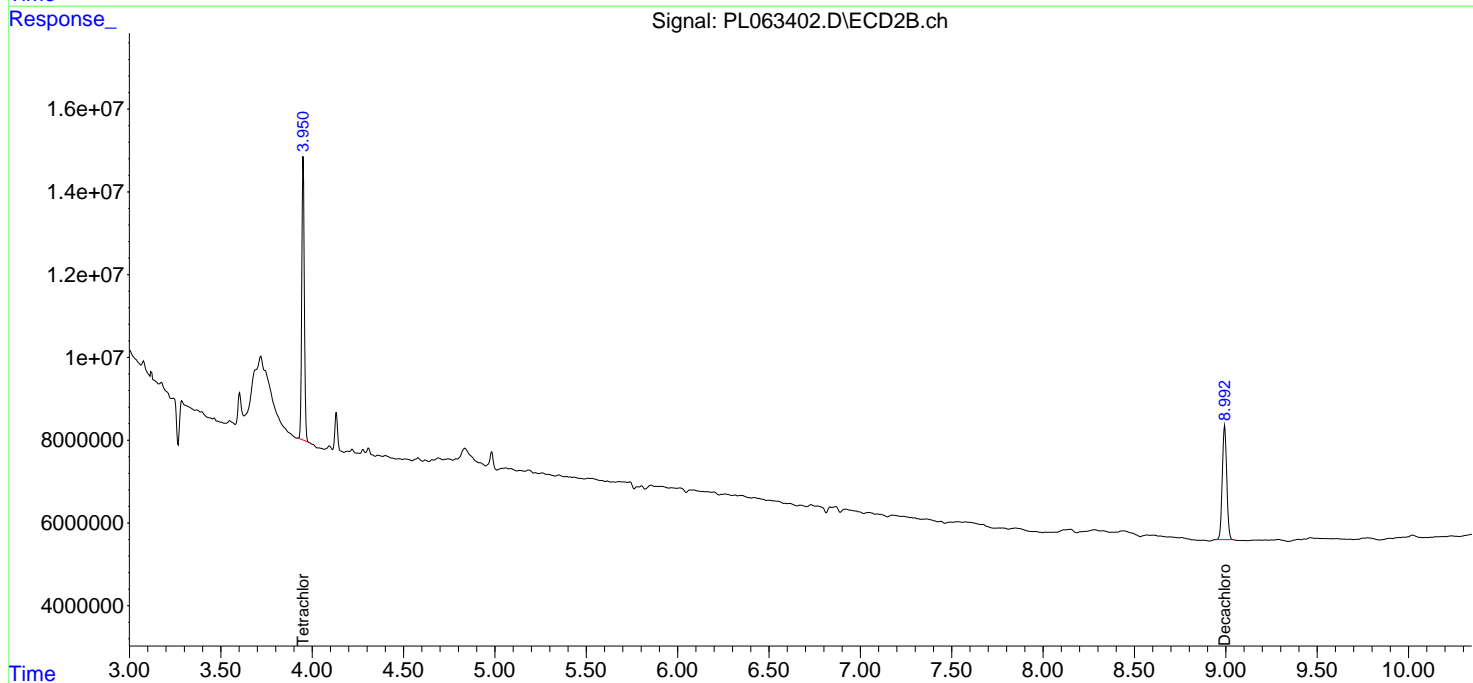
(f)=RT Delta > 1/2 Window (#)=Amounts differ by > 25% (m)=manual int.

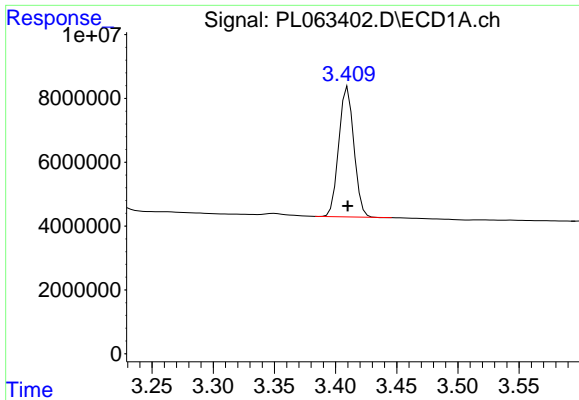
Data Path : Z:\pestpcbsrv\HPCHEM1\ECD\_L\Data\PL120820\  
 Data File : PL063402.D  
 Signal(s) : Signal #1: ECD1A.ch Signal #2: ECD2B.ch  
 Acq On : 08 Dec 2020 20:05  
 Operator : DD\AJ  
 Sample : L4971-02  
 Misc :  
 ALS Vial : 34 Sample Multiplier: 1

Instrument :  
 ECD\_L  
 ClientSampleId :  
 5S1-A-D-COMP

Integration File signal 1: autoint1.e  
 Integration File signal 2: autoint2.e  
 Quant Time: Dec 09 00:20:57 2020  
 Quant Method : Z:\pestpcbsrv\HPCHEM1\ECD\_L\methods\PL112320.M  
 Quant Title : GC Extractables  
 QLast Update : Tue Nov 24 01:53:58 2020  
 Response via : Initial Calibration  
 Integrator: ChemStation

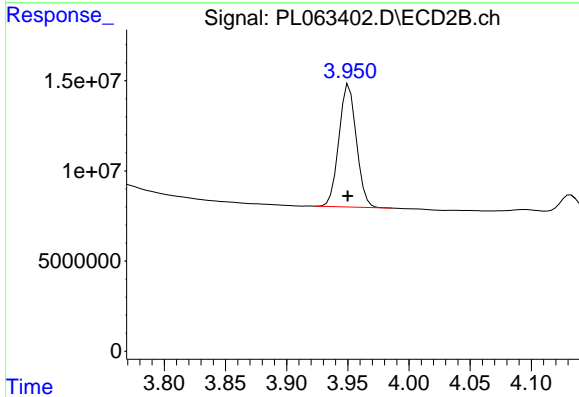
Volume Inj. : 1 µl  
 Signal #1 Phase : ZB-MR2 Signal #2 Phase: ZB-MR1  
 Signal #1 Info : 30M x 0.32mm x0.2 Signal #2 Info : 30M x 0.32mm x0.5µm



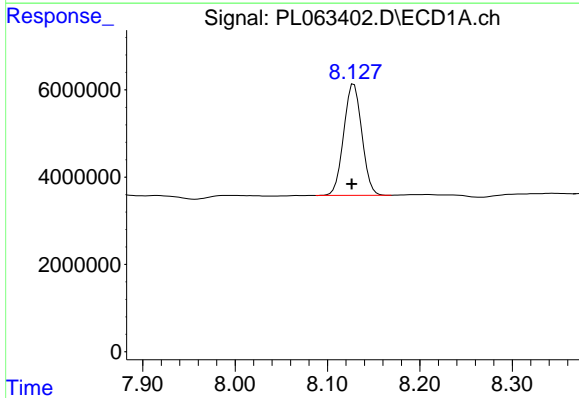


#1 Tetrachloro-m-xylene  
 R.T.: 3.410 min  
 Delta R.T.: 0.000 min  
 Response: 34961991  
 Conc: 20.53 ng/ml

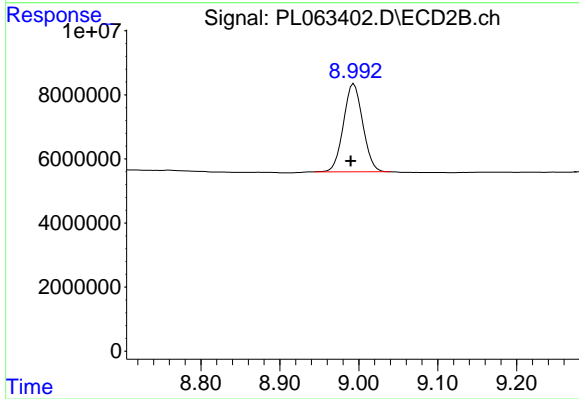
Instrument :  
 ECD\_L  
 ClientSampleId :  
 5S1-A-D-COMP



#1 Tetrachloro-m-xylene  
 R.T.: 3.951 min  
 Delta R.T.: 0.001 min  
 Response: 67428649  
 Conc: 20.66 ng/ml



#28 Decachlorobiphenyl  
 R.T.: 8.129 min  
 Delta R.T.: 0.003 min  
 Response: 34869461  
 Conc: 18.67 ng/ml



#28 Decachlorobiphenyl  
 R.T.: 8.994 min  
 Delta R.T.: 0.004 min  
 Response: 46643610  
 Conc: 19.60 ng/ml