

Data Path : Z:\pestpcbsrv\HPCHEM1\ECD\_L\Data\PL120820\  
 Data File : PL063368.D  
 Signal(s) : Signal #1: ECD1A.ch Signal #2: ECD2B.ch  
 Acq On : 08 Dec 2020 11:54  
 Operator : DD\AJ  
 Sample : PB133459BL  
 Misc :  
 ALS Vial : 5 Sample Multiplier: 1

Instrument :  
 ECD\_L  
 ClientSampleId :  
 PB133459BL

Integration File signal 1: autoint1.e  
 Integration File signal 2: autoint2.e  
 Quant Time: Dec 09 00:11:15 2020  
 Quant Method : Z:\pestpcbsrv\HPCHEM1\ECD\_L\methods\PL112320.M  
 Quant Title : GC Extractables  
 QLast Update : Tue Nov 24 01:53:58 2020  
 Response via : Initial Calibration  
 Integrator: ChemStation

Volume Inj. : 1 µl  
 Signal #1 Phase : ZB-MR2 Signal #2 Phase: ZB-MR1  
 Signal #1 Info : 30M x 0.32mm x0.2 Signal #2 Info : 30M x 0.32mm x0.5µm

Compound	RT#1	RT#2	Resp#1	Resp#2	ng/ml	ng/ml
-----						
System Monitoring Compounds						
1) SA Tetrachlo...	3.417	3.951	35459593	62533153	20.821	19.160
28) SA Decachlor...	8.138	8.999	38139009	51288944	20.423	21.557

Target Compounds

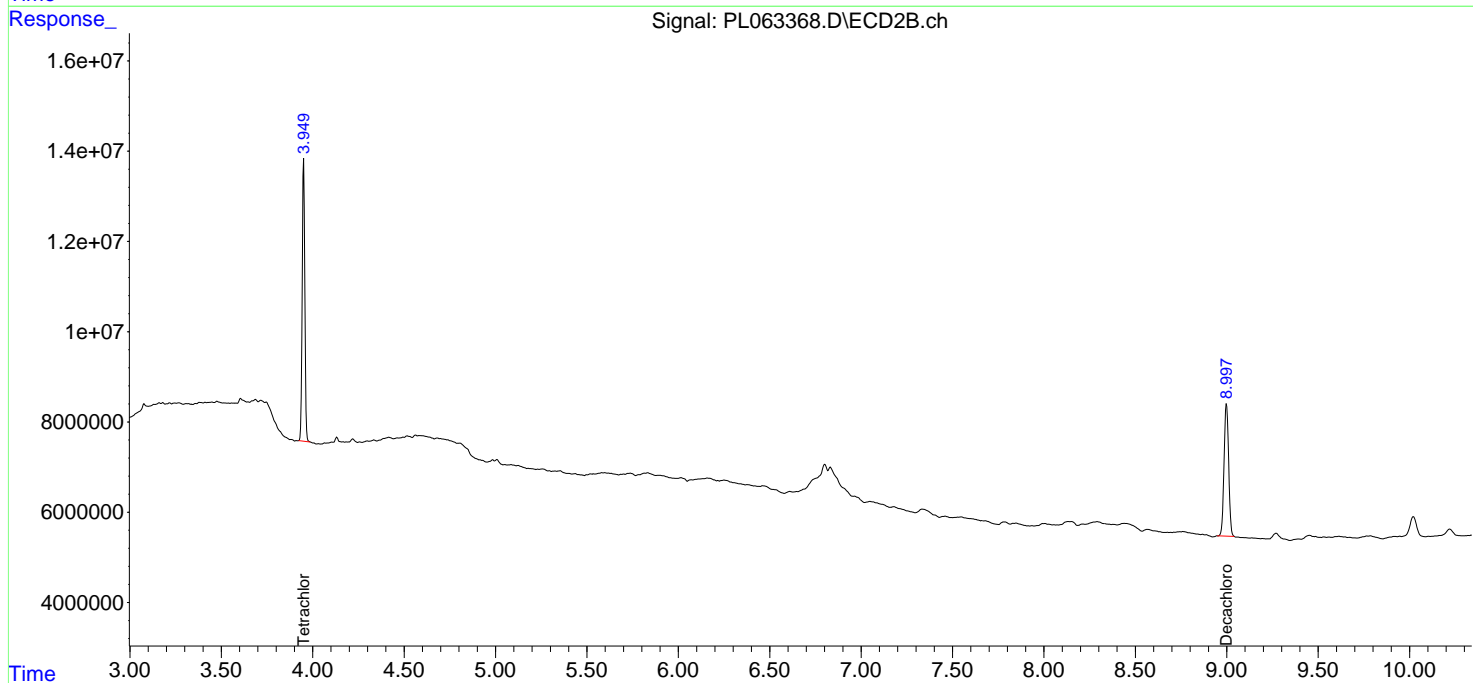
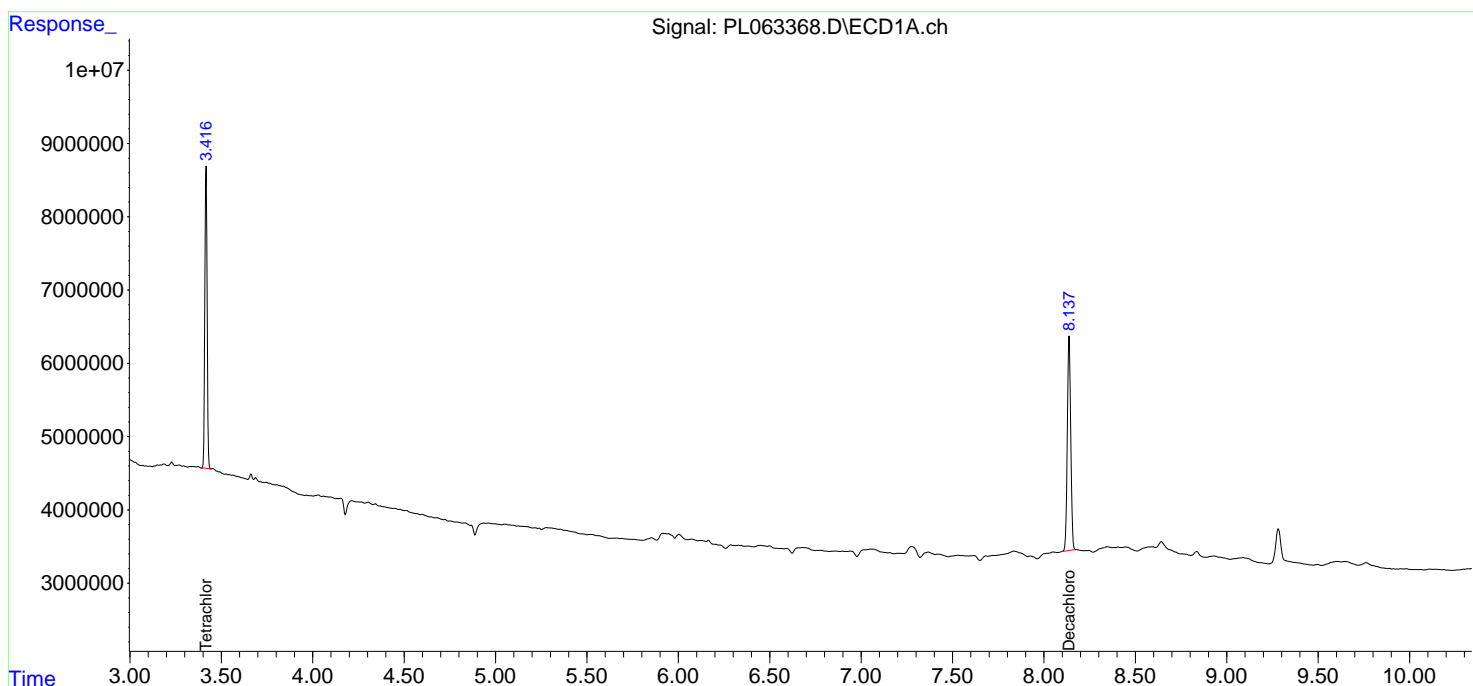
(f)=RT Delta > 1/2 Window (#)=Amounts differ by > 25% (m)=manual int.

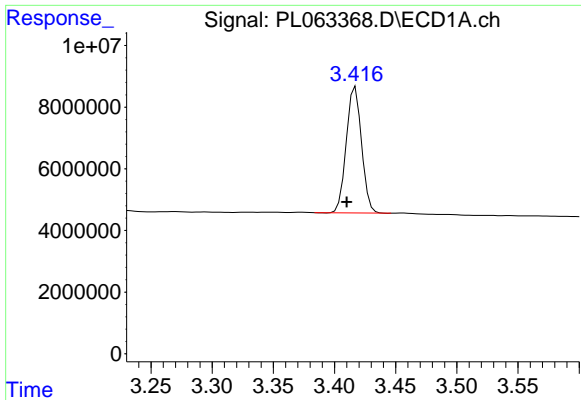
Data Path : Z:\pestpcbsrv\HPCHEM1\ECD\_L\Data\PL120820\  
 Data File : PL063368.D  
 Signal(s) : Signal #1: ECD1A.ch Signal #2: ECD2B.ch  
 Acq On : 08 Dec 2020 11:54  
 Operator : DD\AJ  
 Sample : PB133459BL  
 Misc :  
 ALS Vial : 5 Sample Multiplier: 1

Instrument :  
 ECD\_L  
 ClientSampleID :  
 PB133459BL

Integration File signal 1: autoint1.e  
 Integration File signal 2: autoint2.e  
 Quant Time: Dec 09 00:11:15 2020  
 Quant Method : Z:\pestpcbsrv\HPCHEM1\ECD\_L\methods\PL112320.M  
 Quant Title : GC Extractables  
 QLast Update : Tue Nov 24 01:53:58 2020  
 Response via : Initial Calibration  
 Integrator: ChemStation

Volume Inj. : 1 µl  
 Signal #1 Phase : ZB-MR2 Signal #2 Phase: ZB-MR1  
 Signal #1 Info : 30M x 0.32mm x0.2 Signal #2 Info : 30M x 0.32mm x0.5µm

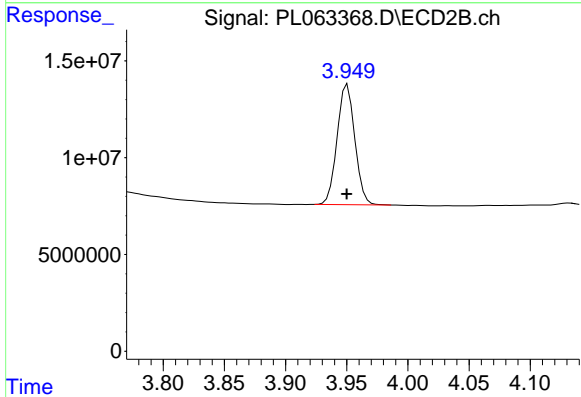




#1 Tetrachloro-m-xylene

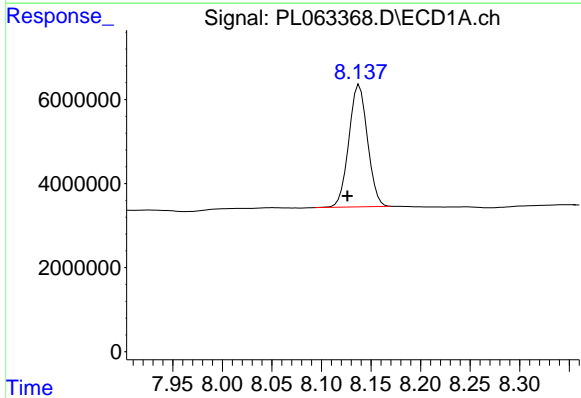
R.T.: 3.417 min  
 Delta R.T.: 0.007 min  
 Response: 35459593  
 Conc: 20.82 ng/ml

Instrument :  
 ECD\_L  
 ClientSampleId :  
 PB133459BL



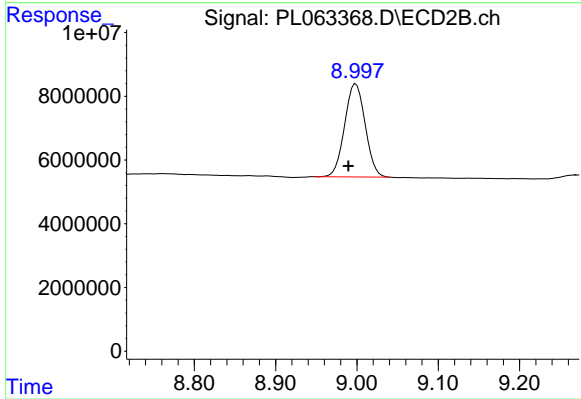
#1 Tetrachloro-m-xylene

R.T.: 3.951 min  
 Delta R.T.: 0.000 min  
 Response: 62533153  
 Conc: 19.16 ng/ml



#28 Decachlorobiphenyl

R.T.: 8.138 min  
 Delta R.T.: 0.012 min  
 Response: 38139009  
 Conc: 20.42 ng/ml



#28 Decachlorobiphenyl

R.T.: 8.999 min  
 Delta R.T.: 0.009 min  
 Response: 51288944  
 Conc: 21.56 ng/ml